

SOME ITEMS ARE INCLUDED FOR ILLUSTRATIVE PURPOSES ONLY AND IN CERTAIN INSTANCES MAY NOT BE AVAILABLE.

THIS DRAWING CONTAINS INFORMATION CONFIDENTIAL TO STAR MANUFACTURING INTERNATIONAL, INC. NO REPRODUCTION OR DISCLOSURE OF ITS CONTENTS IS PERMITTED.

**MAIN ASSEMBLY
MODEL UM1833A / UM1850A**



PARTS LIST

February 9, 2007, Rev B

Ultra-Max Electric Conveyor Oven
UM1833A/1850A-230V - Main Assembly

MODEL _____

Key Number	Part Number	Number Per Unit	Description and Model Designation
1	G9-Z5716	2	TUNNEL SHROUD
2	G9-Z5745	1	INFEED SHELF
3	G9-Z5362	1	EXIT SHELF
4	2A-Z0314	4	ADJUSTABLE LEG
5	2C-Z5182	4	THUMB SCREW
6	2M-Z5747	1	CONTROL GRAPHIC
7	2M-Z5665	1	FRONT GRAPHIC
8	2P-Z4996	4	VENT PLUG
9	2R-Z5174	2	LATCH
10	2R-Z5188	2	LATCH KEEPER
11	2V-Z6696	1	PRESSURE TUBE
12	G9-Z5574	1	HOSE SECTION
13	2V-Z5789	1	PROBE TUBE
14	G9-EC0025	1	CONVEYOR FRAME UM1833
	G9-EC0043	1	CONVEYOR FRAME UM1850
15	2A-Z6538	1	DRIVESHAFT ASSEMBLY
17	2A-Z5586	1/2	IDLER SHAFT ASSEMBLY UM1833 / UM1850
18	2B-Z5709	1	BELT - 6' UM1833
	2B-Z5169	1	BELT - 10' UM1850
19	2B-Z5170	4	BELT SPLICE CLIP
20	2P-Z5168	4	BEARING
21	2P-Z6368	2	BEARING - DRIVE UM1850
22	G9-Z5281	1	PAN STOP
23	G9-Z6193	2	CRUMB TRAY
25	G9-EC0093	1	FAN BAFFLE ASSY
26	2N-Z6603	1	HEATING ELEMENT - THREE PHASE (220V)
	2N-Z7477	1	HEATING ELEMENT - THREE PHASE (240V)
27	2U-Z5710	1	HOT AIR BLOWER
28	G9-EC0063	1	REAR COVER
29	2E-Z6630	1	POWER RESISTOR, 50ohm 208/230V
	2E-Z5663	2	POWER RESISTOR BRACKETS
30	2B-Z5607	1	REAR FAN GUARD
31	2K-Z2895	1	SPLIT BUSHING
32	G9-Z5772	1	ACCESS DOOR
33	2E-Z5711	1	MOTOR CAPACITOR
34	2E-Z6650	1	CONTACTOR
35	2C-Z5195	1	CONDUIT HANGER
36	G9-EC0024	1	CONVEYOR ASSY COMPL, 33" UM1833
	G9-EC0042	1	CONVEYOR ASSY COMPL, 50" UM1850
37	G9-EC0039	1	DOOR ASSEMBLY
38	G9-EC0087	1	REAR PANEL WELDMENT, QUAD UM1833A, UM1850A

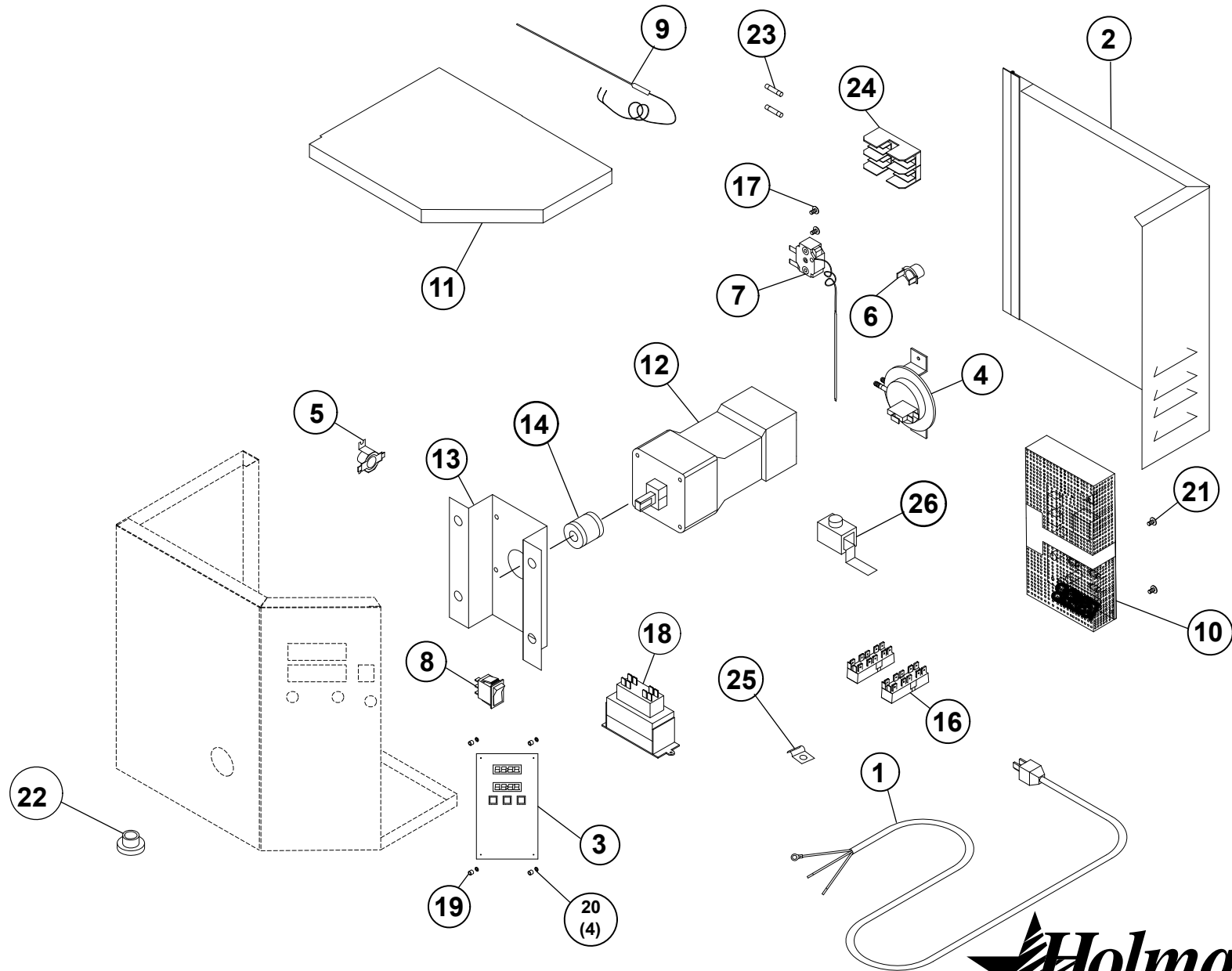
**IMPORTANT: WHEN ORDERING, SPECIFY VOLTAGE OR TYPE GAS DESIRED
INCLUDE MODEL AND SERIAL NUMBER**

PAGE 1
OF 1

Some items are included for illustrative purposes only and in certain instances may not be available.



Star Manufacturing International, Inc.



SOME ITEMS ARE INCLUDED FOR ILLUSTRATIVE PURPOSES ONLY AND IN CERTAIN INSTANCES MAY NOT BE AVAILABLE.

THIS DRAWING CONTAINS INFORMATION CONFIDENTIAL TO STAR MANUFACTURING INTERNATIONAL, INC. NO REPRODUCTION OR DISCLOSURE OF ITS CONTENTS IS PERMITTED.

**CONTROL BOX ASSEMBLY
DC MOTOR
MODEL UM1833**



SK1918 REV. B 10-27-2010

PARTS LIST

February 9, 2007, Rev B

Ultra-Max Electric Conveyor Oven
MODEL UM1833A/1850A-230V - Control Box

Key Number	Part Number	Number Per Unit	Description
1	2E-Z6651	1	TERMINAL BLOCK, INPUT
2	G9-EC0014	1	CONTROL BOX DOOR ASSEMBLY
3	G9-Z7283	1	CONTROLLER, TIME/TEMPERATURE
4	2E-Z5683	1	VACUUM LIMIT SWITCH
5	2T-Z5175	1	THERMOSTAT, 120F
6	2T-Z5176	1	THERMOSTAT, 140F
7	2T-Z5177	1	HIGH TEMPERATURE LIMIT THERMOSTAT
8	2E-Z1858	1	SWITCH - LIGHTED
9	2J-Z5189	1	THERMOCOUPLE ASSEMBLY
10	G9-Z6610	1	POWER SUPPLY, 24VDC-150W (230V INPUT)
11	G9-Z5738	1	LID, CONTROL BOX
12	2U-Z5171	1	GEARMOTOR
13	G9-Z5740	1	GEARMOTOR BRACKET
14	2A-Z6534	1	SPRING-LOADED COUPLING ASSEMBLY
15	2B-Z5775	2	FAN WIRE GUARD
16	2E-Z4597	2	TERMINAL BLOCK
17	2C-Z0216	2	SCREW M4 (METRIC)
18	2E-Z5741	1	TRANSFORMER
19	2K-Z1971	4	SPACER
21	2C-Z5797	2	SCREW M3 (METRIC)
22	2K-3485	1	BUSHING - HEYCO
23	2E-Z5680	2	FUSE
24	2E-Z5681	1	FUSEHOLDER
25	2C-Z3350	1	HALF CLAMP

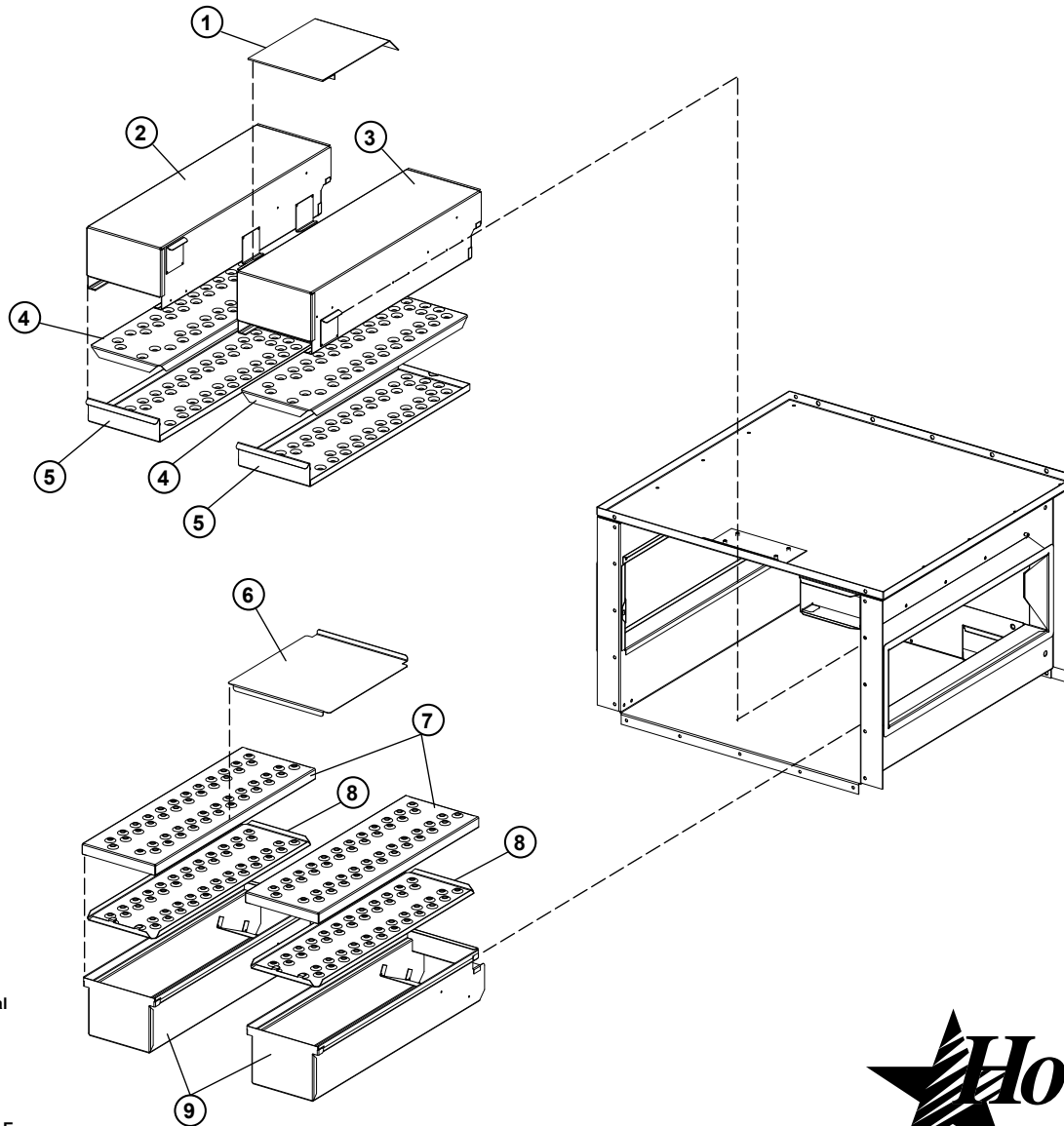
IMPORTANT: WHEN ORDERING, SPECIFY VOLTAGE OR TYPE GAS DESIRED
INCLUDE MODEL AND SERIAL NUMBER

PAGE 1
OF 1

Some items are included for illustrative purposes only and in certain instances may not be available.



Star Manufacturing International, Inc.



This drawing contains information confidential to Star Manufacturing International, Inc. No reproduction or disclosure of its contents is permitted.

SOME ITEMS ARE INCLUDED FOR ILLUSTRATIVE PURPOSES ONLY AND IN CERTAIN INSTANCES MAY NOT BE AVAILABLE

MODEL: UM1800 Series Quad Finger Assembly



SK2208 REV. - 6/14/06

PARTS LIST

February 9, 2007, Rev B

Ultra-Max Electric Conveyor Oven
MODEL UM1833A/1850A-230V - Finger Assembly

Key Number	Part Number	Number Per Unit	Description
1	G9-Z9196	1	UPPER BAFFLE
2	G9-EC0084	1	FINGER WELD, UPPER LEFT
3	G9-EC0085	1	FINGER WELD, UPPER RIGHT
4	G9-Z9123	2	TOP COLUMNATING PLATE - QUAD
5	G9-Z9121	2	TOP NOZZLE - QUAD
6	G9-Z9197	1	LOWER BAFFLE
7	G9-Z9122	2	BOTTOM NOZZLE - QUAD
8	G9-Z9124	2	BOTTOM COLUMNATING PLATE - QUAD
9	G9-EC0083	2	FINGER WELD, LOWER - QUAD

**IMPORTANT: WHEN ORDERING, SPECIFY VOLTAGE OR TYPE GAS DESIRED
INCLUDE MODEL AND SERIAL NUMBER**

PAGE 1
OF 1

Some items are included for illustrative purposes only and in certain instances may not be available.



Star Manufacturing International, Inc.