

HOLMAN® **COOKING EQUIPMENT**

90 INDUSTRIAL PARK ROAD, P.O. BOX 880, SACO, ME/U.S.A. 04072-0880
(207) 282-1589 • 800-225-3958 • FAX (207) 282-6283

**OPERATOR'S MANUAL
HOLMAN CONVEYOR TOASTERS
MODELS T914, S914
FOR SERVICE INFORMATION
U.S. AND CANADA CALL: 1-800-225-3958
24 HOURS/DAY 7 DAYS/WEEK**

TABLE OF CONTENTS

UNCRATING AND INSPECTION	PAGE 1
SECURITY FEATURES	PAGE 1A
ASSEMBLY AND INSTALLATION	PAGE 1, 2
COOKING PROCEDURES	PAGE 2, 3
CLEANING PROCEDURES	PAGE 3
TROUBLESHOOTING GUIDE	PAGE 4, 5
MAINTENANCE PROCEDURES	PAGE 6, 7, 8
PARTS LIST	PAGE 9

DRAWINGS

HEAT REFLECTOR/CRUMB TRAY	PAGE 1
TOAST CHUTE	PAGE 1
ADJ. HEAT SHUTTER, FRONT VIEW	PAGE 2
HEATER TUBE INSTALLATION	PAGE 6
DRIVE SYSTEM	PAGE 8
WIRING DIAGRAM	PAGE 10

**OPERATOR'S MANUAL
HOLMAN CONVEYOR TOASTERS
MODEL S914**

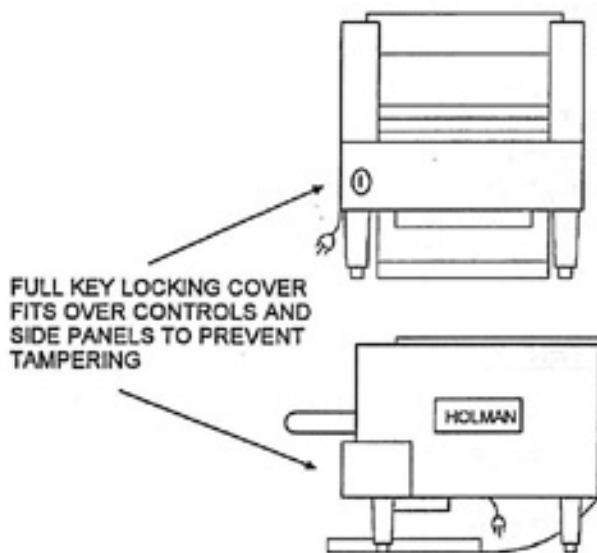
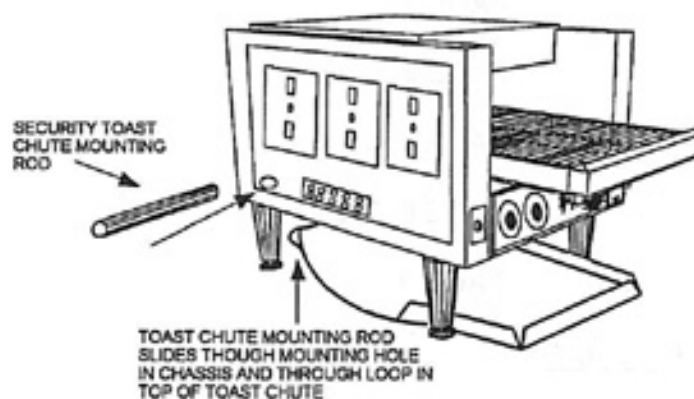


Fig. 1



S914CHUT.WMF
Fig. 2

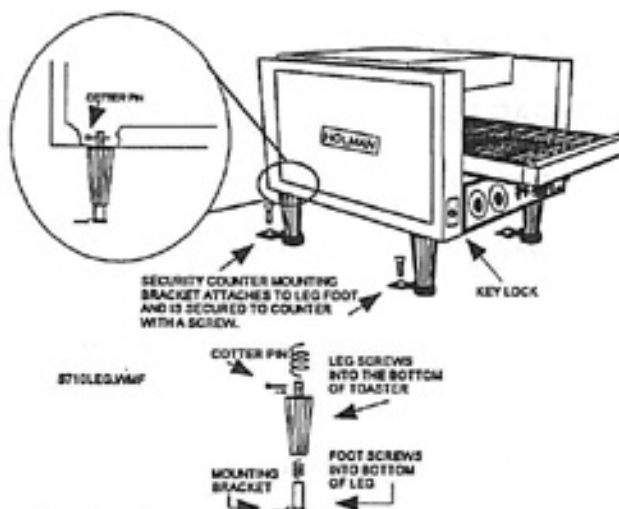


Fig. 3

SECURITY COVER :

Your Holman model S914 is equipped with a full front key locking cover (fig.1). This cover fits over the front and sides of the unit. The security cover must be removed with a key in order to gain access to the controls, side panels, legs and toast chute to be removed.

To remove, unlock the cover using the key. Pull locked side of cover out and away from the unit. The right side will release at the same time.

To replace the cover, Hook the right side of the cover over the latch on right front of the unit while sliding the left side of the cover over the lock. Secure cover using key.

TOAST CHUTE :

To install the toast chute (fig. 2), Remove the left side panel by removing two screws and pulling the top part of the panel out while lifting up. Remove the mounting rod by sliding it through chassis.

Next, place the toast chute beneath toaster as shown. Line up the looped end of toast chute with holes in the rear of toaster as shown. Insert mounting rod through the holes in chassis and the toast chute (if legs have not been installed, do so now).

Reinstall side panel and secure with screws. Toast chute is now ready for use.

LEGS :

To secure the toaster to the counter (fig.3), Remove both side panels by removing two screws and pulling the top of the panel out while lifting up. Unscrew the foot of each leg and slide counter mounting brackets onto the legs. Screw the foot back onto each leg and install legs onto the toaster. Place the small cotter pin through the holes in threaded portion of each leg.

Secure the mounting brackets to the counter with a screw or bolt. Reinstall both side panels and secure with screws.

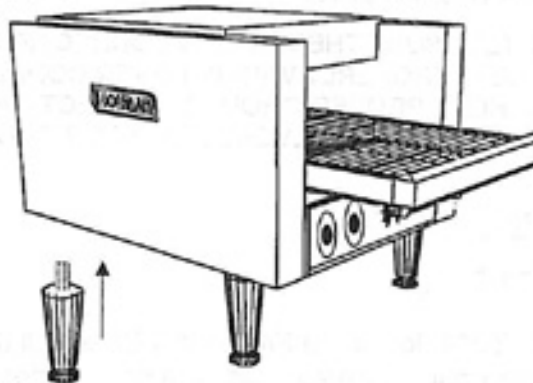
**OPERATOR'S MANUAL
HOLMAN CONVEYOR TOASTERS
MODELS T914, S914**

UNCRATING AND INSPECTION

Unpack unit, legs and toast chute from container. Remove all visible packing material, inspect unit for damage. If damage is discovered, file a claim immediately with the carrier that handled the shipment.

ASSEMBLY AND INSTALLATION

- A. Attach legs by screwing into weld nuts, as shown below.



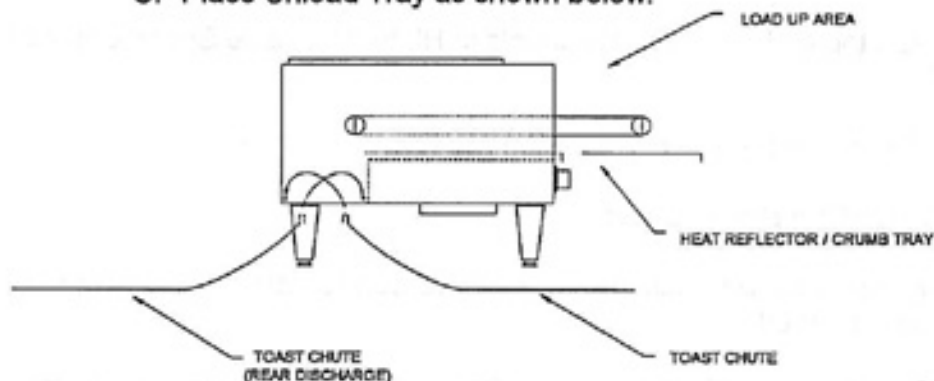
LEG SCREWS INTO
WELD NUT AT BOTTOM
OF UNIT

T914LEG004

- B. Anti Skid pads are available at no charge and may be adhered to the foot section of each leg to prevent sliding. Call 1-800-225-3958 for details.

WARNING: Use of these pads are not approved by the National Sanitation Foundation.

- C. Place Unload Tray as shown below.



CAUTION: DO NOT OPERATE UNIT WITHOUT
CRUMB TRAY PROPERLY POSITIONED
AS THIS WILL CAUSE OVERHEATING IN THE
CONTROL BOX.

Assembly and installation continued on page 2

REV. 2-29-96 MJC

**OPERATOR'S MANUAL
HOLMAN CONVEYOR TOASTERS
MODELS T914, S914**

ASSEMBLY AND INSTALLATION CONT.

WARNING: MAKE SURE ALL INPUT POWER IS OFF BEFORE INSTALLING/REMOVING ANY PARTS.

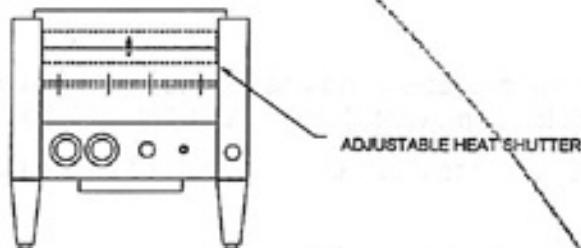
WARNING: BEFORE INSTALLING UNIT(S), CHECK WITH LOCAL POWER COMPANY TO DETERMINE ACTUAL VOLTAGE AT JOB SITE. NEVER PLUG A 208 VOLT UNIT INTO 240 VOLTS OR A 240 VOLT UNIT INTO 208 VOLTS.

WARNING: BE ABSOLUTELY SURE THE GROUND CONNECTION FOR THE RECEPTACLE IS PROPERLY WIRED. NEVER CONNECT UNIT TO POWER WITHOUT PROPER GROUND CONNECTIONS. IMPROPER GROUND MAY RESULT IN SEVERE INJURY OR FATALITY.

COOKING PROCEDURES

A. BREAD TOASTING

1. On model T914, lower the Front Heat Shield all the way down, leave just enough clearance for bread slices to pass under the shield into the cooking cavity (See illustration below).



2. Turn top and bottom heat controls to HI; turn Variable Speed Control to 50.
3. Allow warm up time of 5 to 10 minutes.
4. Test with a slice of bread.
 - a. If toast is too light, turn Variable Speed Control counterclockwise to a slower speed.
 - b. If toast is too dark, turn Variable Speed Control clockwise to a faster speed.

Cooking procedures continued on page 3

REV. 2-8-96 MJC

OPERATOR'S MANUAL
HOLMAN CONVEYOR TOASTERS
MODELS T914, S914

COOKING PROCEDURES CONT.

B. BUN TOASTING

1. Buns may be top or bottom toasted. Turn appropriate Heat Control to HI, set Variable Speed Control to 50.
2. Lower the Front Heat Shield as far as possible, leave just enough clearance for the bun half to pass under and into the cooking cavity. Refer to bread toasting step 1 for adjustment instructions.
3. Test with a half of a bun.
 - a. If bun half is too light, turn Variable Speed Control counterclockwise to a slower speed.
 - b. If bun half is too dark, turn Variable Speed Control clockwise to a faster speed.

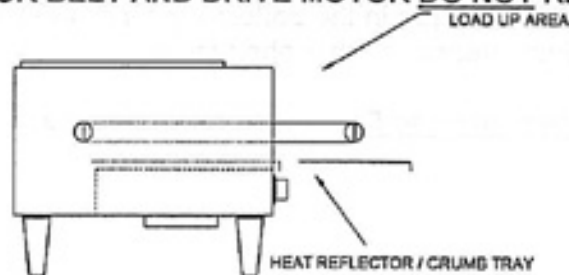
C. DEEP TOASTING OR BAKING (Units with Variable Heat Controls).

Food products that require deep heating without exterior toasting may be heated by reducing the oven temperature (lowering the top and/or bottom heat controls) and cooking at slower speeds. Some foods may require more top heat than bottom heat while other products may require lower top heat than bottom heat. Every product will require some experimentation to arrive at the correct balance of heat control and Variable Speed Control settings. Each time a setting is changed allow about 5 minutes for the unit to stabilize.

CLEANING PROCEDURES

1. Turn top and bottom heat controls to the OFF position.
2. For lightly soiled conveyor belts, turn Variable Speed Control to fastest setting (100) and wipe with a damp cloth.
3. For heavily soiled conveyors, turn Variable Speed Control to fastest setting (100) and wipe with a light abrasive pad.
4. Turn Variable Speed Control off.
5. After the unit cools, remove interior Crumb Tray (as shown below) and clean. Slide Crumb Tray back into position. **DO NOT OPERATE UNIT WITHOUT CRUMB TRAY IN PLACE AS THIS CAUSES OVERHEATING IN THE CONTROL BOX AND MAY ACTIVATE THE HEAT LIMIT SWITCH.**
6. Wipe exterior surface of unit.

CONVEYOR BELT AND DRIVE MOTOR DO NOT REQUIRE LUBRICATION.



**OPERATOR'S MANUAL
HOLMAN CONVEYOR TOASTERS
MODELS T914, S914**

TROUBLESHOOTING GUIDE

A. UNIT WILL NOT HEAT, DRIVE MOTOR WILL NOT RUN.

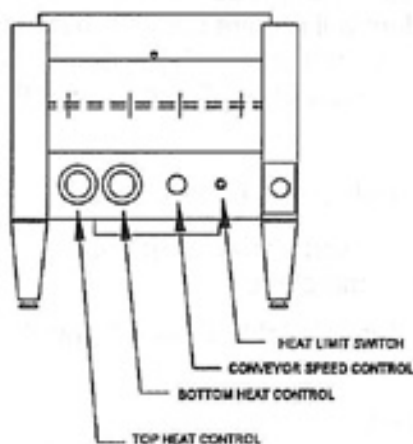
1. Be sure the main Circuit Breaker is switched to the ON position.
2. Check to see if the toaster is plugged in and all controls are turned to the ON position.

B. UNIT WILL NOT HEAT, DRIVE MOTOR RUNS PROPERLY.

1. Check to see if both top and bottom heat controls have been turned to HI.
2. Push Heat Limit Switch on front of Control Box as shown below. If this reactivates the Heater Tubes, see HEAT LIMIT SWITCH in section C.

C. HEAT LIMIT SWITCH

Your Holman conveyor toaster is equipped with an automatically activated Heat Limit Switch which interrupts the heater tube connections if the ambient temperature in the Control Box exceeds 190F (88C). This Heat Limit Switch can be reset manually by pushing the red button on the front of the Control Box.



THE HEAT LIMIT SWITCH IS ACTIVATED WHEN THERE IS NOT SUFFICIENT AIR FLOW GENERATED BY THE COOLING FAN. WHEN HEAT LIMIT SWITCH HAS BEEN ACTIVATED:

1. DISCONNECT UNIT FROM POWER SOURCE.
2. Check to see if air intake area in the bottom center of the Control Box Cover is free of dust, grease or other obstructions.

Troubleshooting guide continued on page 5

REV. 2-8-96 MJC

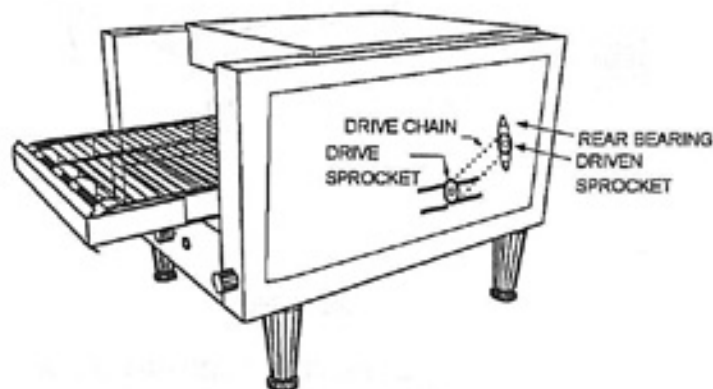
**OPERATOR'S MANUAL
HOLMAN CONVEYOR TOASTERS
MODELS T914, S914**

TROUBLESHOOTING GUIDE CONT.

3. Check if Crumb Tray is in place. NEVER OPERATE UNIT WITHOUT CRUMB TRAY IN PLACE AS THIS CAUSES OVERHEATING IN THE CONTROL BOX.
4. If no obstructions to the air flow can be found, and if the Crumb Tray is in place, call Holman Factory Service Department at 1-800-225-3958 for assistance.

D. DRIVE MOTOR WILL NOT RUN, UNIT HEATS PROPERLY.

1. DISCONNECT UNIT FROM POWER SOURCE.
2. Remove right hand side panel (from operator's position). Loosen screws holding Drive Motor in place and slide motor toward the rear of unit. Remove Drive Chain and manually move Conveyor Belt to check for mechanical binding. If conveyor moves freely, call Holman Factory Service Department at 1-800-225-3958 as Drive Motor and/or Variable Speed Control may need replacement.



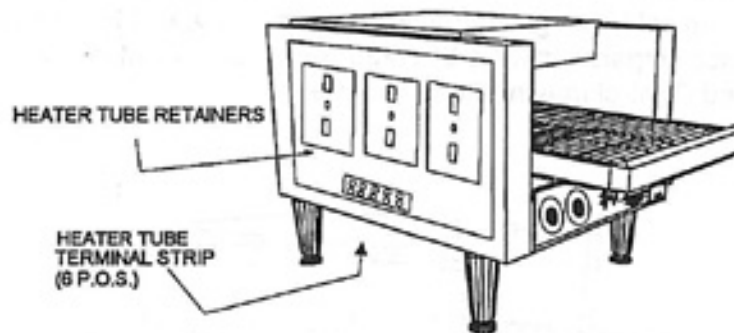
E. DRIVE MOTOR RUNS AT ONE SPEED REGARDLESS OF SPEED CONTROL SETTING.

1. Call Holman Factory Service Department at 1-800-225-3958 as Variable Speed Control should be replaced.

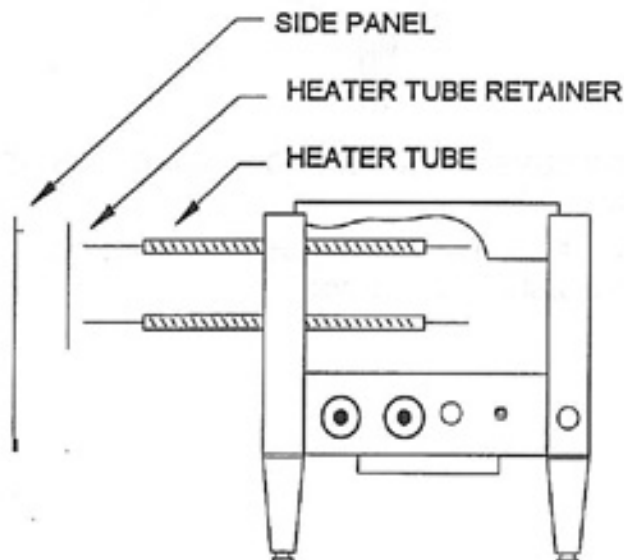
**OPERATOR'S MANUAL
HOLMAN CONVEYOR TOASTERS
MODELS T914, S914**

MAINTENANCE PROCEDURES

- A. REPLACING HEATER TUBES (as below)
1. DISCONNECT UNIT FROM POWER SOURCE.
 2. Remove right and left side panels.
 3. Remove heater tube wire from terminal block connection, keeping top and bottom wires separate.
 4. Remove heater tube retainers by removing retaining screws with washer.
 5. Gently, pull defective heater tube out of unit.
 6. Gently, put new heater tube into unit.
 7. Replace heater tube retainers, reconnect heater tube wires to terminal block and install side panels.



T914RET.WMF



Maintenance procedures continued on page 7

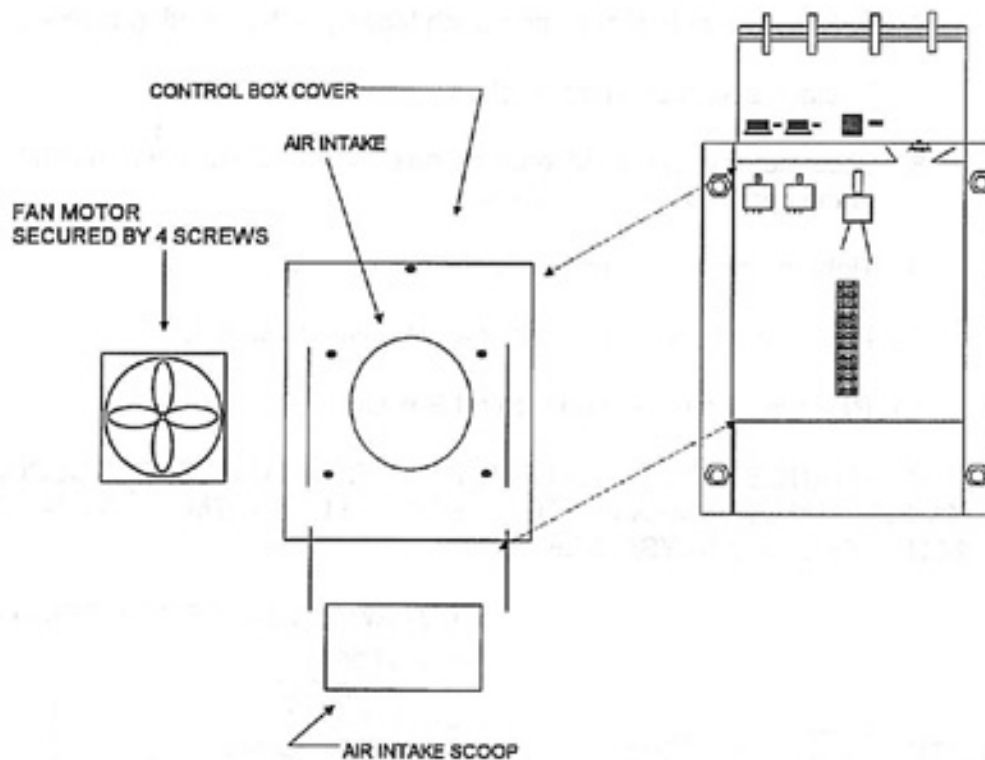
REV. 2-8-96 MJC

OPERATOR'S MANUAL
HOLMAN CONVEYOR TOASTERS
MODELS T914, S914

MAINTENANCE PROCEDURES (CONT.)

B. REPLACING FAN MOTOR

1. DISCONNECT UNIT FROM POWER SOURCE.
2. Remove Control Box Cover with Fan Motor attached.
3. Unplug power supply cord from Fan Motor.
4. Remove (4) screws which hold Fan Motor and grill to cover.
5. Put replacement motor and grill in place and secure to the Control Box Cover with screws removed in step 4.
6. Reconnect power supply cord to Fan Motor.
7. Replace Control Box Cover.



Maintenance procedures continued on page 8

REVISED 9/14/94 MJC

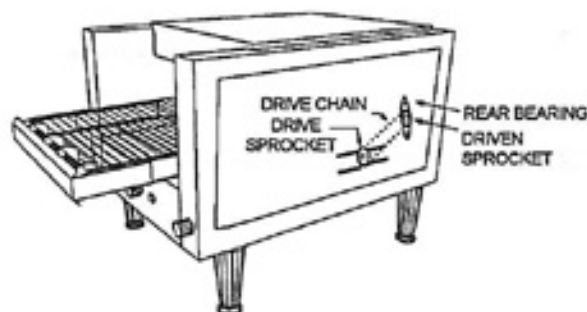
**OPERATOR'S MANUAL
HOLMAN CONVEYOR TOASTERS
MODELS T914, S914**

MAINTENANCE PROCEDURES (CONT.)

C. REPLACING BELT DRIVE MOTOR

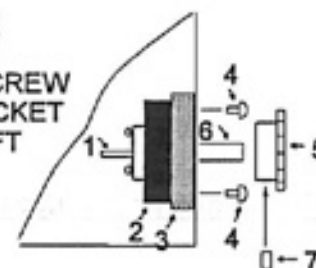
1. DISCONNECT UNIT FROM POWER SOURCE.
2. Remove right side panels and Control Box Cover.
3. Remove sprocket from motor shaft.
4. Remove the wire from terminal block connecting the Drive Motor to internal wiring. On units rated 208 volts the white wire is used and on 240 volt units the blue wire is used. Note which color leads are being used for these connections and which lead is capped with white tape. The new motor should use the same arrangement.
5. Remove screws holding motor in place.
6. Put new motor in place and attach loosely with mounting screws.
7. Replace sprocket on motor shaft.
8. Slide motor until the Drive Chain has about 1/8" slack when lightly pushed at the center of its top open run.
9. Tighten screws to secure motor.
10. Rewire leads in same manner as removed in step 4.
11. Replace side panel and Control Box Cover.

IF ASSISTANCE IS REQUIRED FOR THIS OR ANY OTHER PROCEDURE IN THIS MANUAL CALL HOLMAN FACTORY SERVICE DEPARTMENT AT 1-800-225-3958. 24 HOURS/DAY 7 DAYS/WEEK



CUT AWAY VIEW OF CONTROL BOX

- 1- ROTOR
- 2- FIELD/STACK
- 3- GEAR BOX
- 4- MOUNTINGSCREW
- 5- DRIVE SPROCKET
- 6- MOTOR SHAFT
- 7- SET SCREW



DRAWING

REV. 2-8-96 MJC

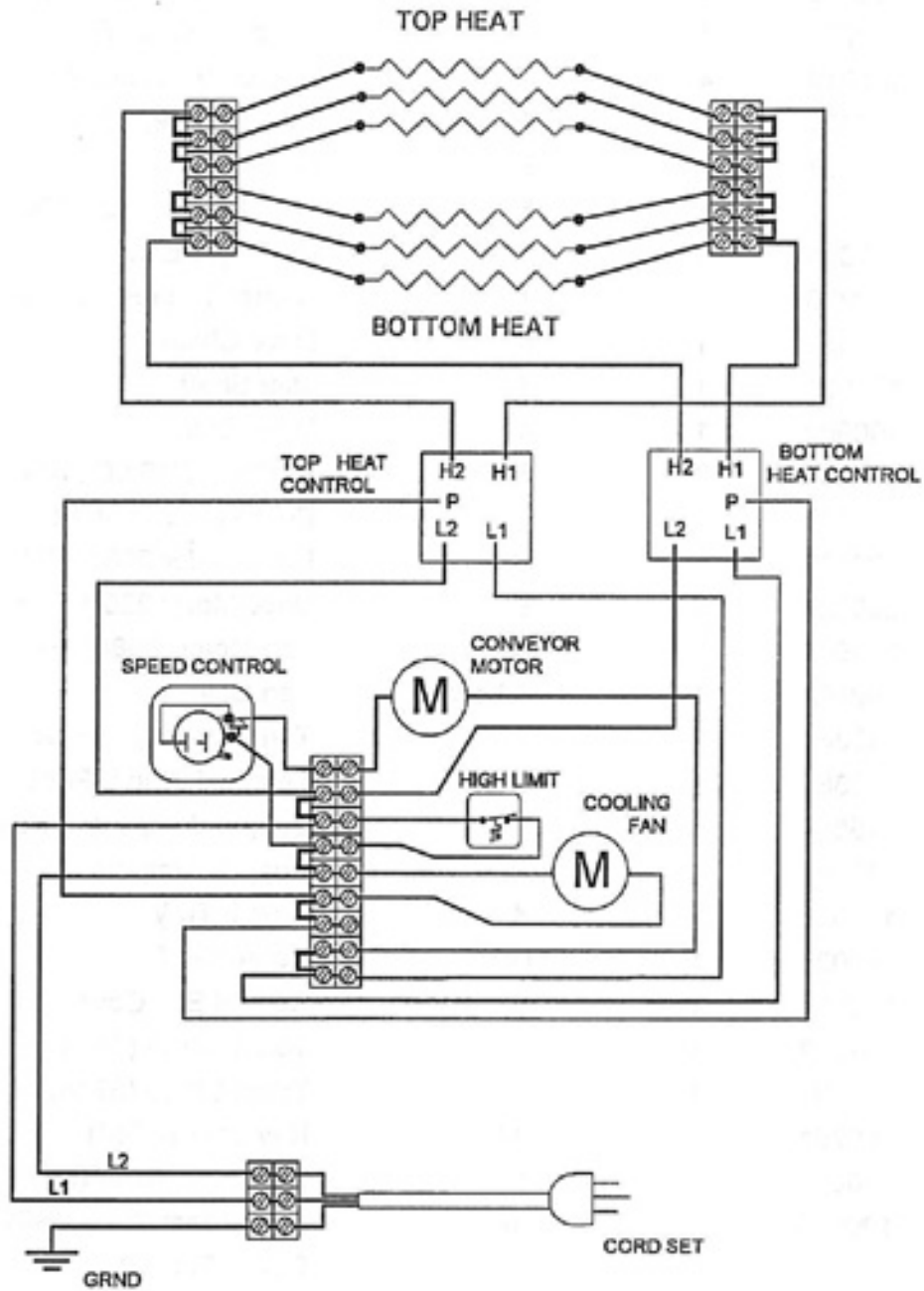
OPERATOR'S MANUAL
 HOLMAN CONVEYOR TOASTERS
MODELS T914, S914

PARTS LIST

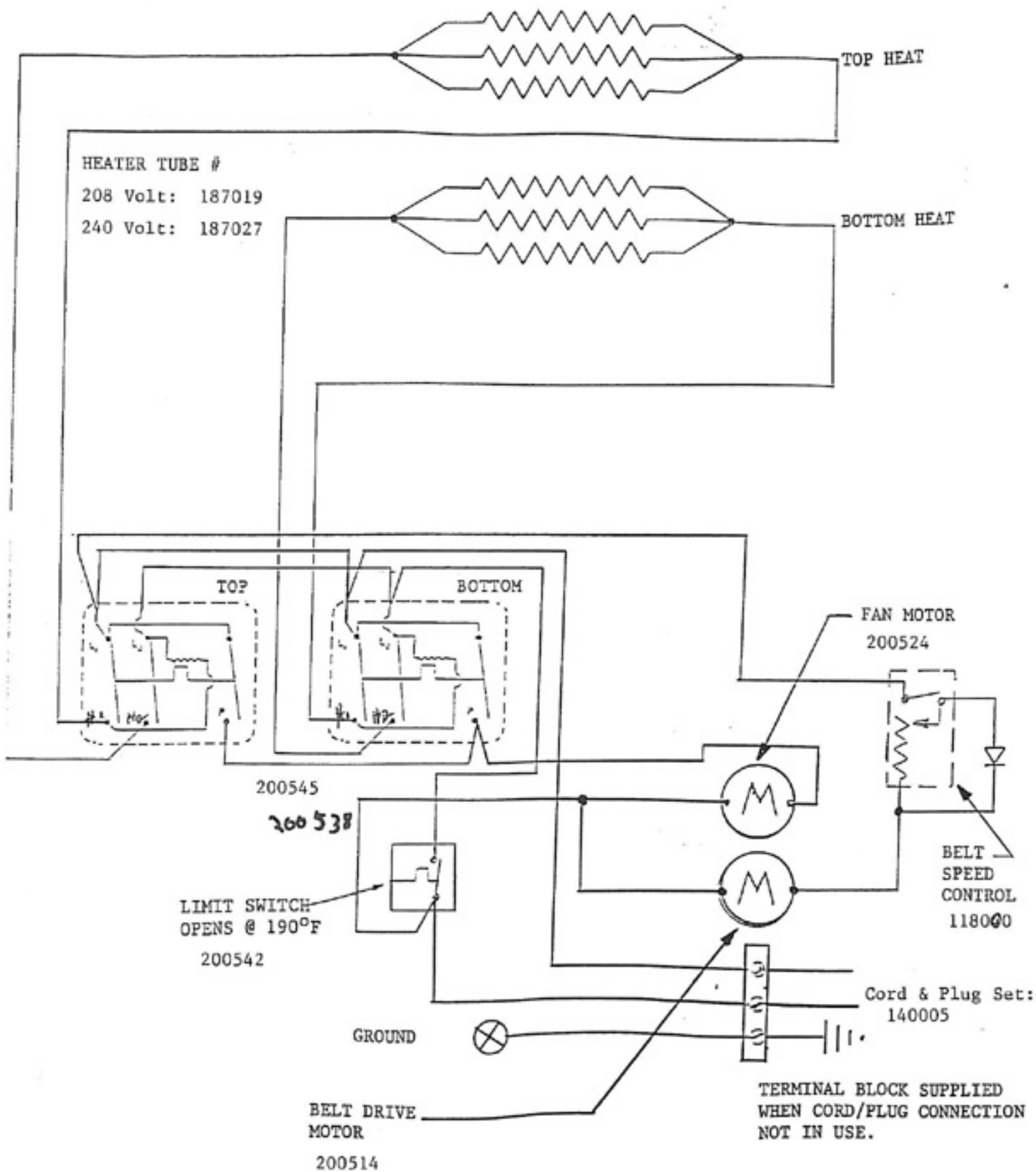
<u>PART#</u>	<u>QTY</u>	<u>PAGE#</u>	<u>DESCRIPTION</u>
200538	2	6	Infinity Switch
200702	2	6	Knob, Infinity Switch
118040	1	6	Variable Speed Control
200703	1	6	Knob, Variable Speed Control
197019	4	7	Heater Tube, 208V
197022	4	7	Heater Tube, 220V
197027	4	7	Heater Tube, 240V
200566	1	5	Heat Limit Switch, 190F
160006	1	4	Conveyor Belt
400833	4	7	Heater Tube Retainers
150000	1	6	Drive Chain
100905	1	4	Idler Shaft
100902	1	4	Drive Shaft
112261	2	6	Bushing 5/16 I.D., Rear
200693	2	6	Bushing, Idler Shaft
200509	1	9	Drive Motor 208-240V
200521	1	9	Drive Motor 220V 50 Hz
200561	1	8	Fan Motor, 208/240V
200562	1	Not Shown	Fan Grill
115388	2	6	Terminal Strip 6 Poss.
115386	1	7	Terminal Strip 9 Poss.
115502	4	7	Copper Jumpers, 3 Poss.
115501	4	7	Copper Jumpers, 2 Poss.
100529	1	4	Crumb Tray
140028	1	14	Cord/Plug Set
100314	1	8	Control Box Cover
401022	1	2	Toast Chute (T914)
100603	1	1A	Toast Chute (S914)
200751	1	1A	Key Lock (S914)
100876	1	1A	Key Lock Cover (S914)
100935	1	1A	Rod, Toast Chute (S914)
200280	4	1A	Cotter Pin (S914)
200712	4	1A	Leg

OPERATOR'S MANUAL
HOLMAN CONVEYOR TOASTERS
MODELS T914, S914

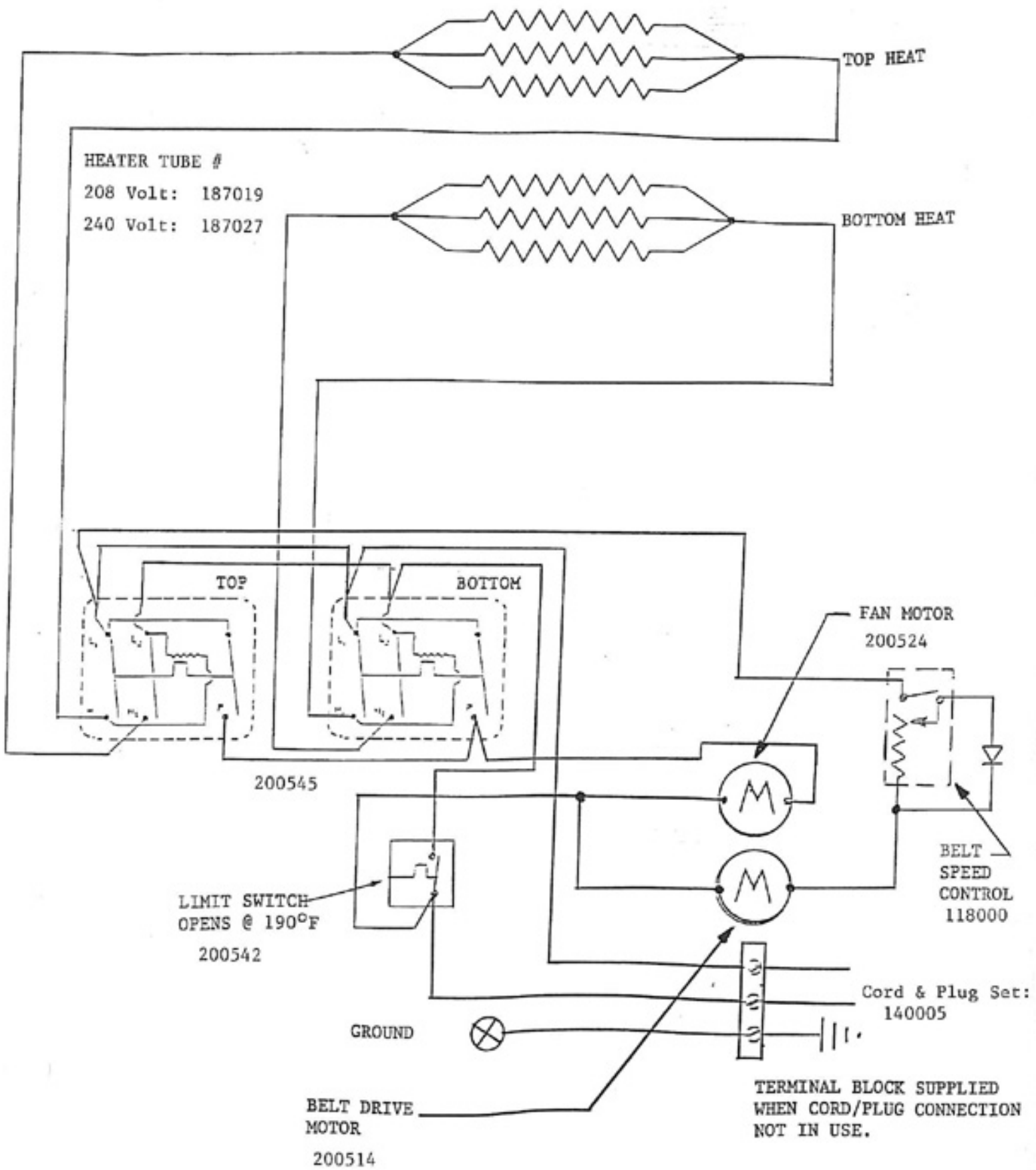
WIRING DIAGRAM FOR MODELS T914 and S914 (208, 220, 240 VOLT 60 Hz)

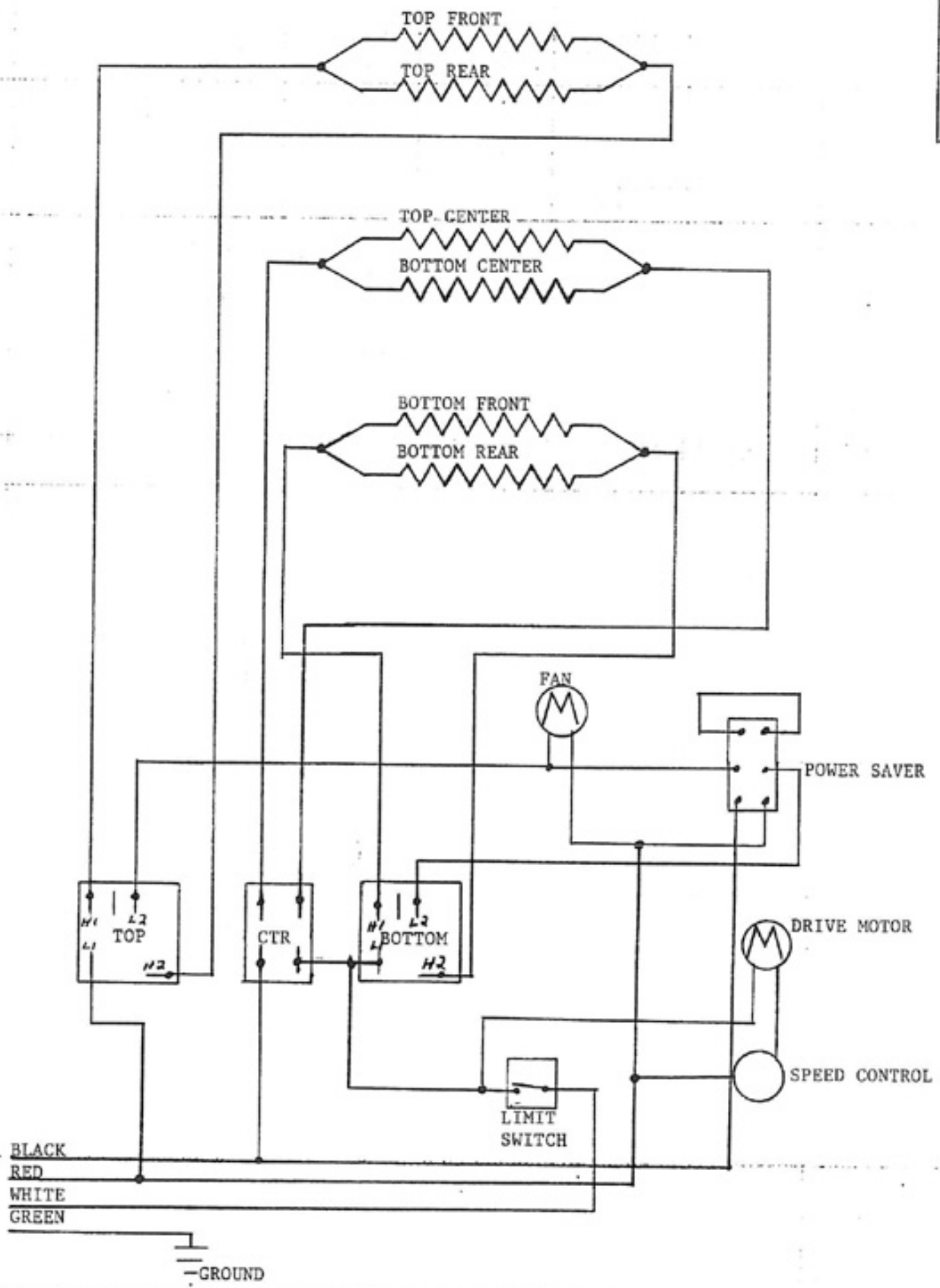


T914



T914





DEL: TX914	208 VOLTS	50/60 Hz	3 ϕ	5.4 Kw	Amps
Date 10-25-89		Description:			
Drawn By: JW/RJB		MODIFIED WITH POWER SAVER			