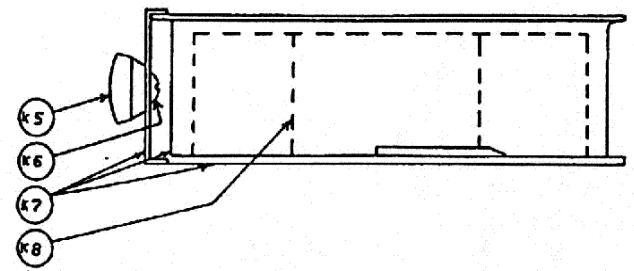
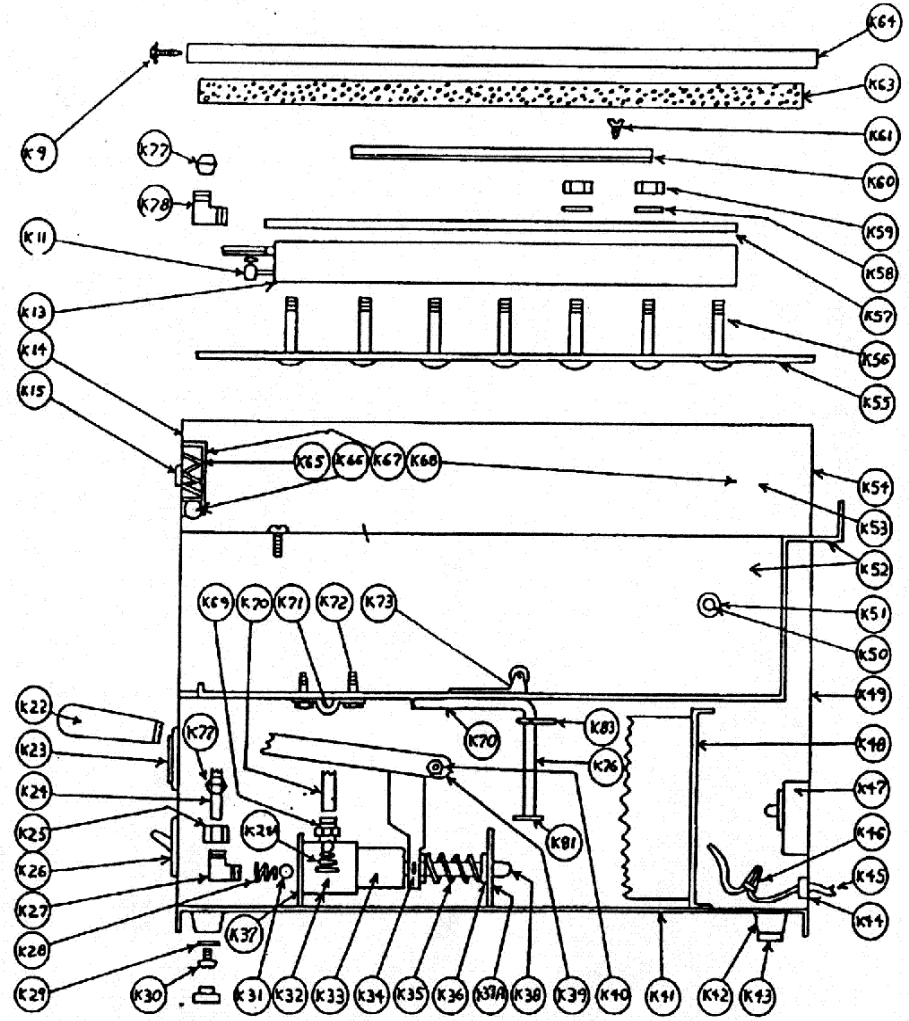
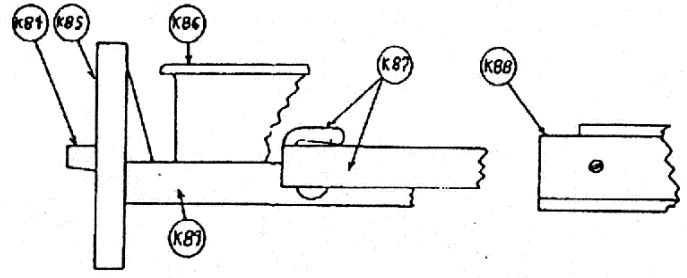
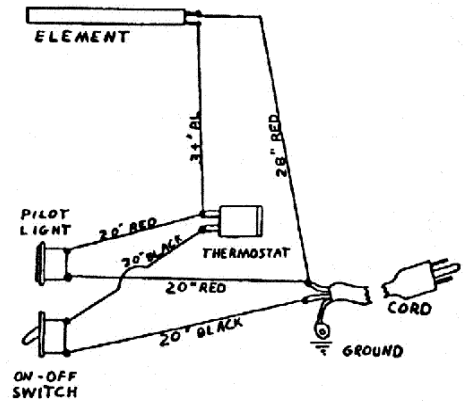


REPLACEMENT PARTS PRICE LIST  
MODEL: NFS



# PARTS LIST

February 13, 2006, Rev C

MODEL Food Steamer Model NFS

Key Number	Part Number	Description
K3	2R-Y7557	DRAWER HANDLE
K5	2R-09-07-0075	KNOB WATER PAN
K7	C9-30-FS-0199	WATER PAN ASSEMBLY
K8	C9-04-FS-0199	SPLASH BAFFLE
K10	2K-10-07-0014	SLEEVE - WATER LINE
K13	C9-30-FS-0002	CASTING & ELEMENT WITH PART K-55, K57
K14	C9-50-FS-0011	FRONT
K16	C9-04-FS-0001	FOOD RACK
K17	Z1-52-07-0038	DRAWER FRAME WITH K18 ROLLER
K18	2A-09-FS-0004	DRAWER FRAME ROLLER
K19L		OUTER DRAWER SLIDE & ROLLER (LEFT, NOT AVAILABLE)
K19R		OUTER DRAWER SLIDE & ROLLER (RIGHT, NOT AVAILABLE)
K20L	C9-04-FS-0002	INNER DRAWER SLIDE & ROLLER (LEFT, NOT AVAILABLE)
K20R	C9-04-FS-0162	INNER DRAWER SLIDE & ROLLER (RIGHT, NOT AVAILABLE)
K21	2A-09-FS-0004	ROLLER ONLY FOR SLIDE
K22A	2P-09-07-0016	CAP HANDLE
K22A	C9-04-FS-0053	PUMP HANDLE
K23	2J-05-07-0025	PILOT LIGHT (SPECIFY 120V OR 230V)
K23A	2S-05-07-0040	PILOT LIGHT RECTANGULAR
K24	C9-40-FS-0001	WATER LINE CASTING TO PUMP
K26	2E-05-07-0011	ON-OFF SWITCH
K27	2K-10-07-0017	ELBOW
K28	2P-10-07-0016	INNER SPRING (PUMP TO CASTING)
K28A	2P-10-07-0011	INNER SPRING (PUMP TO WATER PAN)
K31	2P-09-07-0074	BALL
K32	C9-04-FS-0058	BRASS HOUSING
K33A	C9-51-FS-0009	CYLINDER CAP AND SLEEVE
K33	2A-10-FS-0001	PUMP CYLINDER
K34	2C-08-07-0101	COTTER PIN
K35	2P-10-07-0005	PUMP SPRING
K36	2A-10-07-0012	BRASS BUSHING
K37	C9-70-FS-0057	LARGE WELDED PUMP FRAME
K37A	C9-04-FS-0056	SMALL PUMP FRAME BRACKET
K38	C9-52-FS-0008	PUMP PISTON RING ASSEMBLY LEVER
	2A-10-07-0010	PUMP PLUNGER
	2A-10-FS-0002	PISTON ROD
	2C-08-07-0281	WASHER #10 X 9/16" SEALING
	2C-2566	NUT 10-32 HEX STL NP
K38A	2A-10-07-0010	PISTON RING ONLY
K39	2R-Z5841	PUMP LEVER
K40	C9-40-FS-0049	PUMP NUT & SCREW
K42	2A-09-07-0009	FOOT
K44	2K-05-07-0017	CORD GROMMET
K45	2E-05-07-0051	CORD
K46	2C-05-07-0036	TWIST-ON CONNECTER
K47	2T-05-FS-0003	THERMOSTAT
K51	C9-04-FS-0125	SPACER
K52A	C9-04-FS-0008	LINER NEW STYLE
K56	2C-08-07-0009	STEAM PLATE SCREW ALUMINUM ONLY
K59	2C-2589	NUT
K60	-04-07-0049	THERMOSTAT BULB HOLDER
K64	Z1-04-07-0030	TOP
K65	2P-09-07-0073	DRAWER LOCK SPRING

**IMPORTANT: WHEN ORDERING, SPECIFY VOLTAGE OR TYPE GAS DESIRED  
INCLUDE MODEL AND SERIAL NUMBER**

PAGE 1  
OF 2

Some items are included for illustrative purposes only and in certain instances may not be available.



**Star Manufacturing International, Inc.**

# PARTS LIST

February 13, 2006, Rev C

MODEL Food Steamer Model NFS

Key Number	Part Number	Description
K66	<a href="#">2P-09-07-0074</a>	DRAWER LOCK BALL
K67	<a href="#">Z1-04-07-0284</a>	DRAWER LOCK HOUSING
K69	<a href="#">C9-50-FS-0063</a>	PUMP HOUSING CONNECTOR
K70	<a href="#">C9-50-FS-0014</a>	WATER LINE PUMP TO RESERVOIR
K71	<a href="#">C9-04-FS-0063</a>	WATER LINE CLAMP
K73	<a href="#">C9-30-FS-0007</a>	PAN LIFT ASSEMBLY
K74	<a href="#">2G-12-07-0043</a>	BOX
K75	<a href="#">Z1-30-07-0011</a>	WIRE, PER FOOT
K76	<a href="#">C9-04-FS-0023</a>	RUBBER WATER TUBE
K77	<a href="#">2A-10-07-0004</a>	PIPE SLEEVE FOR WATER LINE
K78	<a href="#">2K-10-07-0017</a>	STRAIGHT CASTING WATER LINE CONNECTOR
K79	<a href="#">C9-30-FS-0008</a>	PUMP COMPLETE WITH LEVER/ SPRING/ BRACKET - 45LBS
K80	<a href="#">2R-Z5845</a>	HANDLE
K81	<a href="#">2P-10-07-0015</a>	PUMP TUBE STRAINER
K82	<a href="#">-99-07-0007</a>	SEALANT FOR GRIDS RTV-732
K83	<a href="#">2P-08-07-0148</a>	HOSE CONNECTOR
K84	<a href="#">Z1-30-07-0222</a>	DRAWER HANDLE WITH 10-3/4 CENTERS
K85	<a href="#">C9-52-FS-0032</a>	DRAWER FRONT
K86	<a href="#">04-FS-0002</a>	FOOD PAN
K87A	<a href="#">2A-09-FS-0004</a>	ROLLER
K87L	<a href="#">Z1-30-07-0004</a>	INNER DRAWER TRACK LEFT
K87R	<a href="#">Z1-30-07-0003</a>	INNER DRAWER TRACK RIGHT
K88L	<a href="#">C9-04-FS-0072</a>	OUTER DRAWER TRACK LEFT
K88R	<a href="#">Z1-04-07-0036</a>	OUTER DRAWER TRACK RIGHT
K89	<a href="#">Z1-30-07-0002</a>	DRAWER ASSY INCLUDES FRONT HANDLE

**IMPORTANT: WHEN ORDERING, SPECIFY VOLTAGE OR TYPE GAS DESIRED  
INCLUDE MODEL AND SERIAL NUMBER**

PAGE 2  
OF 2

Some items are included for illustrative purposes only and in certain instances may not be available.



**Star Manufacturing International, Inc.**