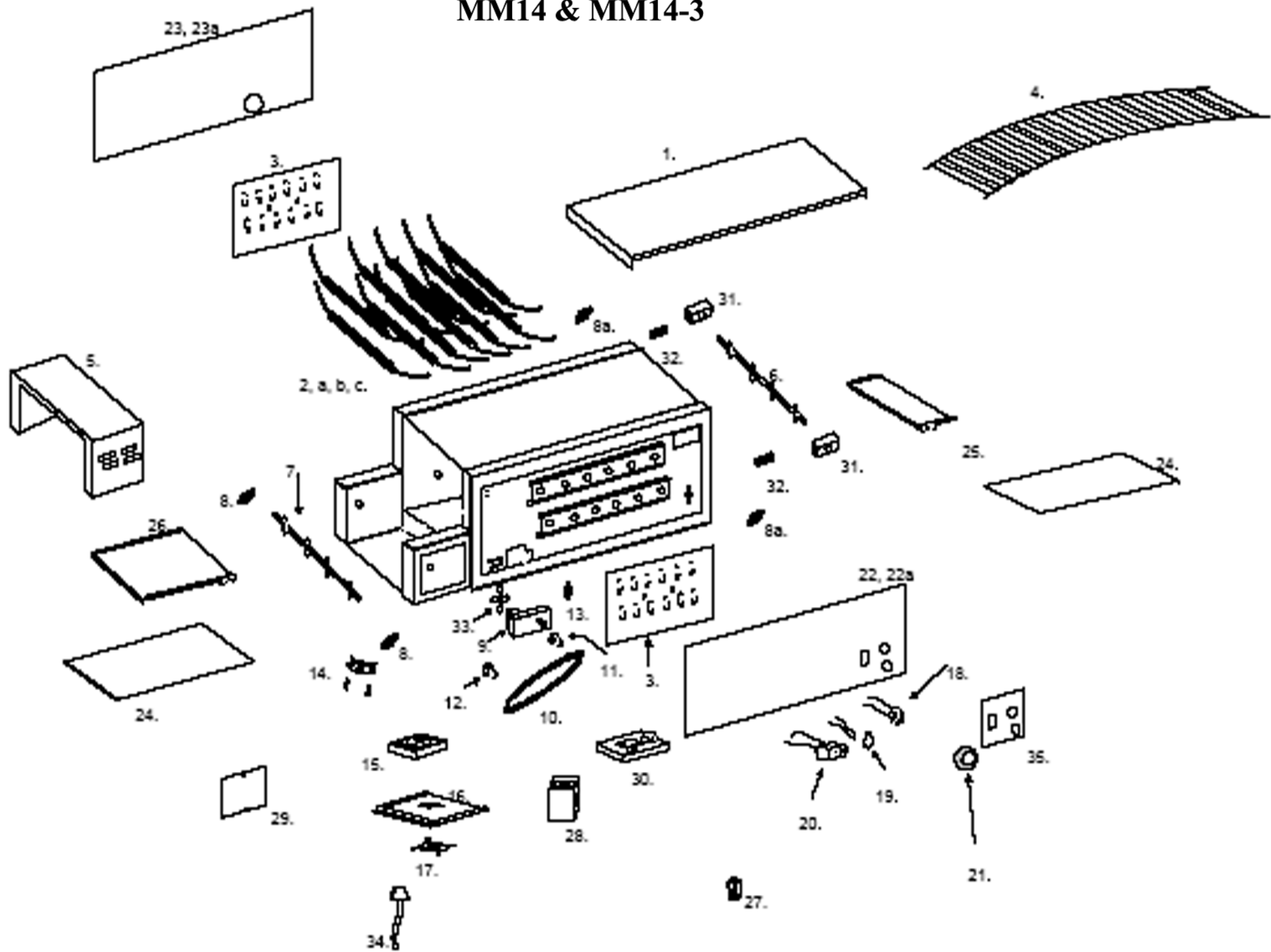


MM14 & MM14-3



| MODEL: MM14 & MM14-3 Parts List | | | | | | | |
|---------------------------------|---------------------------------------------------------|--------------------|------------|-----------------|------------|-----------------|------------|
| KEY | Serial Number Range | 0801 to 0102 | | 0999 to 0701 | | 0998 to 0899 | |
| | DESCRIPTION | PART # | QTY | PART # | QTY | PART # | QTY |
| 1 | COVER, TOP | GE-402163 | 1 | GE-402163 | 1 | GE-402224 | 1 |
| 3 | RETAINER, HEATER TUBE | GE-402629 | 1 | GE-402161 | 1 | GE-402303 | 1 |
| 4 | CONVEYOR BELT (14 x 82.5") <i>Longer than original</i> | GE-160031 | 1 | GE-160031 | 1 | GE-160031 | 1 |
| NS | LINK, CONVEYOR BELT | 2B-200618 | EA | 2B-200618 | EA | 2B-200618 | EA |
| NS | LINK, MASTER, CONVEYOR BELT | 2B-200620 | 3 | 2B-200620 | 3 | 2B-200620 | 3 |
| 5 | TUNNEL EXTENDER | GE-100982 | 1 | GE-100982 | 1 | GE-100956 | 1 |
| 6 | SHAFT, IDLER | GE-101257 | 1 | GE-101257 | 1 | GE-101257 | 1 |
| 7 | SHAFT, DRIVE | GD-101252 | 1 | GD-101252 | 1 | GD-101252 | 1 |
| 8 | BUSHING, REAR, <i>FIXED</i> | GB-112262 | 2 | GB-112262 | 2 | GB-112262 | 2 |
| 8a | BUSHING, FRONT, <i>Non-spring Load</i> | N/A | N/A | GB-112262 | 2 | GB-112262 | 2 |
| 9 | MOTOR, DRIVE (<i>L-R</i>) | 2U-Z11871 | 1 | 2U-Z11871 | 1 | 2U-Z11871 | 1 |
| 9 | MOTOR, DRIVE (<i>R-L</i>) | 2U-Z11870 | 1 | 2U-Z11870 | 1 | 2U-Z11870 | 1 |
| 10 | CHAIN, DRIVE (27") | GD-150023 | 1 | GD-150023 | 1 | GD-150023 | 1 |
| 11 | SPROCKET, DRIVE (25B24 X 5/16") | 2P-200650 | 1 | 2P-200650 | 1 | 2P-200650 | 1 |
| 12 | SPROCKET, DRIVEN (25B11 X 3/8") | 2P-115362 | 1 | 2P-115362 | 1 | 2P-115362 | 1 |
| 13 | SWITCH, FAN MOTOR | 2E-200574 | 2 | 2E-200574 | 2 | 2E-200574 | 2 |
| 14 | SWITCH, HIGH LIMIT RESET | 2E-200566 | 1 | 2E-200566 | 1 | 2E-200566 | 1 |
| 15 | MOTOR, FAN | 2U-200561 | 1 | 2U-200561 | 1 | 2U-200561 | 1 |
| 16 | COVER, CONTROL BOX | GE-402635 | 1 | GD-401636 | 1 | GD-401636 | 1 |
| 17 | GUARD, FAN MOTOR | 2R-200562 | 1 | 2R-200562 | 1 | 2R-200562 | 1 |
| 18 | SWITCH, SPEED CONTROL | 2E-118066 | 1 | GD-118060 | 1 | GD-118060 | 1 |
| 19 | LIGHT, PILOT | 2J-200427 | 1 | 2J-200427 | 1 | 2J-200427 | 1 |
| 20 | SWITCH, MASTER ON/OFF | 2E-200552 | 1 | 2E-200552 | 1 | 2E-200552 | 1 |
| 21 | KNOB, SPEED CONTROL | 2R-200761 | 1 | SP-115360 | 1 | SP-115360 | 1 |
| 22 | PANEL, CONTROL SIDE (<i>L-R</i>) | GE-402638 | 1 | GE-402231 | 1 | GE-402231 | 1 |
| 22a | PANEL, CONTROL SIDE (<i>R-L</i>) | GE-402639 | 1 | GE-402230 | 1 | GE-402230 | 1 |
| 23 | PANEL, CORD SIDE (<i>L-R</i>) | GE-402156 | 1 | GE-402156 | 1 | GE-402156 | 1 |
| 23a | PANEL, CORD SIDE (<i>R-L</i>) | GE-402155 | 1 | GE-402155 | 1 | GE-402155 | 1 |
| 24 | TRAY, CRUMB | GE-100955 | 2 | GE-100955 | 2 | GE-100955 | 2 |
| 25 | TRAY, LOAD-UP | GE-402640 | 1 | GE-100957 | 1 | GE-100957 | 1 |
| 26 | TRAY, UNLOAD | GE-100944 | 1 | GE-100978 | 1 | GE-100978 | 1 |
| 27 | LEG, 2 1/2" METAL | 2R-200716 | 4 | 2R-200716 | 4 | 2R-200716 | 4 |
| 28 | CONTACTOR, 40 AMP | 2E-302789 | 1 | 2E-302789 | 1 | 2E-302789 | 1 |
| 29 | PANEL, CONVEYOR EXTENSION | GD-401206 | 2 | GD-401206 | 2 | GD-401206 | 2 |
| 30 | * CONTROL, MOTOR BOARD ANACON | PS-Z7966 | 1 | PS-Z7966 | 1 | PS-Z7966 | 1 |
| 31 | * BUSHING, FRONT, SPRING LOADED | * 2P-200765 | 2 | N/A | N/A | N/A | N/A |
| 32 | * SPRING, CONVEYOR BUSHING | * 2P-200766 | 2 | N/A | N/A | N/A | N/A |
| 33 | BLADE, FAN 3" | 2R-200721 | 1 | 2R-200721 | 1 | 2R-200721 | 1 |
| 34 | CORD, FAN MOTOR | 2E-200387 | 1 | 2E-200387 | 1 | 2E-200387 | 1 |
| 35 | LABEL, CONTROL PANEL | 2M-200890 | 1 | 2M-200890 | 1 | 2M-200890 | 1 |
| NS | CORD, 10/3, <i>NO PLUG</i> | GE-140062 | 1 | GE-140062 | 1 | GE-140062 | 1 |
| NS | TERMINAL BLOCK, 12 POS., LARGE | 2E-200554 | 4 | 2E-200554 | 4 | 2E-200554 | 3 |
| NS | JUMPER, 12 POSITION, LARGE | 2B-200557 | 3 | 2B-200557 | 3 | 2B-200557 | 3 |
| NS | TERMINAL BLOCK, MAIN POWER | SP-115402 | 1 | SP-115402 | 1 | SP-115402 | 1 |
| NS | MAGNET, BAKE AID | 2M-200816 | 1 | 2M-200816 | 1 | 2M-200816 | 1 |
| NS | BRACKET, BAKE AID MAGNET | GE-402525 | 1 | GE-402525 | 1 | GE-402525 | 1 |
| NS | RACK, BELT SUPPORT | GE-100713 | 1 | GE-100713 | 1 | GE-100713 | 1 |
| HEATER TUBES | | | | | | | |
| KEY | Serial Number Range | 0801 to 0102 | | 0999 to 0701 | | 0998 to 0899 | |
| | DESCRIPTION | PART # | QTY | PART # | QTY | PART # | QTY |
| 2 | 208V Top Quartz (<i>198010=450W, 104V, 22.5 ohm</i>) | GE-198010 | 6 | GE-198010 | 6 | GE-198002 | 6 |
| 2a | 208V Bottom Quartz (<i>500W, 208V, 81.3 ohm</i>) | GE-198002 | 6 | GE-198002 | 6 | GE-198002 | 6 |
| 2b | 208V Bottom Metal (cal-rod) | 2N-209195 | 6 | 2N-209195 | 6 | 2N-209195 | 6 |
| 2c | 240V Top Quartz (<i>198011=450W, 120V, 30.10 ohm</i>) | GE-198011 | 6 | GE-198011 | 6 | GE-198005 | 6 |
| 2d | 240V Bottom Quartz (<i>500W, 240V, 108.3 ohm</i>) | GE-198005 | 6 | GE-198005 | 6 | GE-198005 | 6 |
| 2e | 240V Bottom Metal (cal-rod) | 2N-209196 | 6 | 2N-209196 | 6 | 2N-209196 | 6 |
| 2c | 220V Top Quartz | | | ZZ-197884 | 6 | | |
| 2d | 220V Bottom Metal (cal-rod) | | | 2N-209196 | 6 | | |

Anacon to Invertek,
2J-Z7855 is
Invertek control
only

* Part Specific to MM14-3