

HH1(W)

## PARTS LIST

120 V

HH2(W)

| DETAIL # | PART # | QTY | DESCRIPTION                          | LIST           |
|----------|--------|-----|--------------------------------------|----------------|
| 1        | 400753 | 1   | TOP COVER HH1(W)                     | \$40.00        |
| 1        | 400764 | 1   | TOP COVER HH2(W)                     | \$40.00        |
| 2        | 200411 | 1   | PILOT LIGHT                          | \$10.00        |
| 3        | 200543 | 1   | ON/OFF TOGGLE SWITCH                 | \$15.00        |
| 4        | 200559 | 1   | <i>FAN MOTOR</i>                     | <b>\$35.00</b> |
| 5        | 200731 | 1   | 6 MINUTE TIMER                       | \$60.00        |
| 6        | 200409 | 8   | HEATER TUBE SOCKET                   | \$15.00        |
| 7        | 200562 | 1   | FAN GUARD                            | \$5.00         |
| 8        | 401497 | 1   | FAN SIDE PANEL                       | \$25.00        |
| 9        | 400753 | 1   | LOUVER SIDE PANEL                    | \$25.00        |
| 10       | 400865 | 1   | CRUMB TRAY HH1(W)                    | CALL           |
| 10       | 400872 | 1   | CRUMB TRAY HH2(W)                    | \$70.00        |
| 11       | 115146 | 1   | <i>HIGH LIMIT RESET SWITCH</i>       | \$20.00        |
| 12       | 140034 | 1   | POWER SUPPLY CORD                    | \$22.00        |
| 12       | 140043 | 1   | POWER SUPPLY CORD (WALL MOUNT)       | \$22.00        |
| 13       | 200710 | 4   | 2 1/2" PLASTIC LEG (N/A WALL MOUNT)  | \$7.50         |
| *        | 100700 | 1   | RACK HH1(W) (NOT SHOWN)              | \$60.00        |
| *        | 100701 | 1   | RACK HH2(W) (NOT SHOWN)              | \$120.00       |
| *        | 187726 | 4   | <i>HEATER TUBE HH1(W) (120 VOLT)</i> | \$40.00        |
| *        | 187728 | 4   | <i>HEATER TUBE HH2(W) (120 VOLT)</i> | \$40.00        |
| *        | 200463 | 1   | CORD BUSHING (NOT SHOWN)             | \$5.00         |
| *        | 200531 | 1   | CONTACTOR (NOT SHOWN)                | \$90.00        |
| *        | 200701 | 1   | 4 1/2" BLACK PLASTIC HANDLE (NOT)    | \$10.00        |
| *        | 200732 | 1   | TIMER KNOB (NOT SHOWN)               | \$10.00        |
| *        | 100208 | 2   | WALL MOUNT BRACKET (NOT SHOWN)       | CALL           |

**PARTS LIST**

120V

HH1(W)

HH2(W)

**DESCRIPTION****PART # QTY.****LIST**

|                                      |        |   |          |
|--------------------------------------|--------|---|----------|
| TOP COVER HH1 (W)                    | 400753 | 1 | \$27.00  |
| TOP COVER HH2 (W)                    | 400764 | 1 | \$42.00  |
| PILOT LIGHT                          | 200411 | 1 | \$11.00  |
| ON/OFF TOGGLE SWITCH                 | 200543 | 1 | \$16.00  |
| FAN MOTOR                            | 200558 | 1 | \$37.00  |
| 6 MINUTE TIMER                       | 200731 | 1 | \$63.00  |
| SOCKET, HEATER TUBE                  | 200409 | 8 | \$16.00  |
| FAN GUARD                            | 200562 | 1 | \$6.00   |
| SIDE PANEL (FAN)                     | 401497 | 1 | \$27.00  |
| SIDE PANEL (LOUVER)                  | 400753 | 1 | \$27.00  |
| CRUMB TRAY HH1                       | 400865 | 1 | \$30.00  |
| CRUMB TRAY HH2                       | 400872 | 1 | \$74.00  |
| HIGH LIMIT RESET SWITCH              | 115146 | 1 | \$23.00  |
| POWER SUPPLY CORD                    | 140034 | 1 | \$24.00  |
| POWER SUPPLY CORD (WALL MOUNT)       | 140043 | 1 | \$17.00  |
| LEG, 2 1/2" PLASTIC (N/A WALL MOUNT) | 200710 | 4 | \$8.00   |
| RACK HH1 (W)                         | 100700 | 1 | \$63.00  |
| RACK HH2 (W)                         | 100701 | 1 | \$126.00 |
| CORD BUSHING                         | 200463 | 1 | \$6.00   |
| CONTACTOR                            | 200531 | 1 | \$95.00  |
| 4 1/2" BLACK PLASTIC HANDLE          | 200701 | 1 | \$11.00  |
| TIMER KNOB                           | 200732 | 1 | \$11.00  |
| WALLMOUNT BRACKET                    | 100208 | 2 | \$53.00  |

**HEATER TUBES**

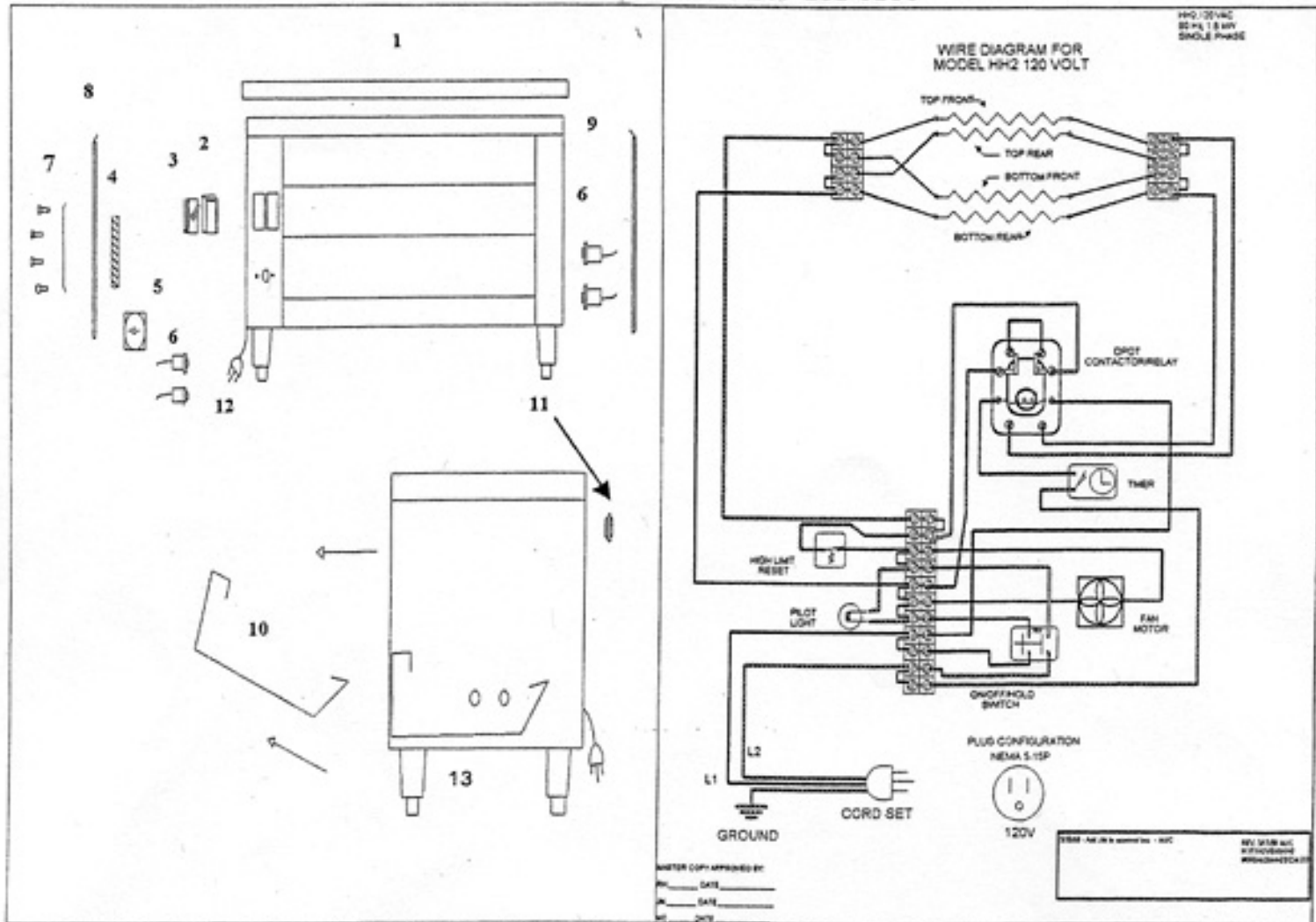
|                                   |        |   |         |
|-----------------------------------|--------|---|---------|
| HEATER TUBE, QUARTZ, 120V, HH1(W) | 187726 | 4 | \$42.00 |
| HEATER TUBE, QUARTZ, 120V, HH2(W) | 187728 | 4 | \$42.00 |

OPERATORS MANUAL  
 HOLMAN FINAL TOUCH FINISHING OVENS (MODEL FT1(W), FT2(W))  
 HEAT AND HOLD OVENS (MODELS HH1(W), HH2(W))  
AND GARLIC BREAD TOAST AND HOLD OVEN (MODEL FT2BH(W))

| <u>PART #</u> | <u>QTY.</u> | <u>PAGE #</u> | <u>DESCRIPTION</u>                       |
|---------------|-------------|---------------|--|
| 200543        | 1           | 6             | ON/OFF Switch                            |
| 200731        | 1           | 6             | Timer, 6 minute<br>HH1, HH2, FT2BH       |
| 200730        | 1           | 6             | Timer, 15 minute<br>FT1, FT2             |
| 200410        | 1           | 6             | Panel Light                              |
| 200409        | 4           | Not Shown     | Heater Tube Socket                       |
| 187721        | 2           | 5             | Heater Tube, FT1 (120V)                  |
| 187719        | 2           | 5             | Heater Tube FT2BH (208v)                 |
| 187722        | 4           | 5             | Heater Tube FT2BH (240v)                 |
| 187723        | 2           | 5             | Heater Tube, FT2 (120V)                  |
| 187726        | 4           | 5             | Heater Tube, HH1 (120V)                  |
| 187728        | 4           | 5             | Heater Tube, HH2 (120V)                  |
| 200559        | 1           | 6             | Fan Motor, FT1, FT2                      |
| 200561        | 1           | 6             | Fan Motor, FT2BH                         |
| 200531        | 1           | 6             | Contactactor/Relay<br>FT1, FT2, HH1, HH2 |
| 200533        | 1           | 6             | Contactactor/Relay, FT2BH                |
| 400757        | 1           | Not Shown     | Sliding Shelf, FT1                       |
| 400766        | 1           | Not Shown     | Sliding Shelf, FT2                       |
| 100701        | 1           | Not Shown     | Rack, FT2BH, HH2                         |
| 100700        | 1           | Not Shown     | Rack, HH1                                |
| 115146        | 1           | 6             | Temperature Limit Switch                 |
| 200562        | 1           | 6             | Fan Grill                                |
| 200387        | 1           | 6             | Fan Cord                                 |
| 140034        | 1           | Not Shown     | Cord & Plug (120V)<br>HH1, HH2, FT1, FT2 |
| 140035        | 1           | Not Shown     | Cord & Plug (208/240V)<br>FT2BH          |

# FOR MODELS HH2 & HH1

1-800-225-3958 OR FAX 1-207-282-6283



## MISCELLANEOUS INFORMATION

### HH2 120 VOLT TUBES

| AMPS | kW  | WATTS |
|------|-----|-------|
| 13.8 | 1.6 | 403   |

### HH1 120 VOLT TUBES

| AMPS | kW  | WATTS |
|------|-----|-------|
| 10.5 | 1.2 | 302   |

220 VOLT COMPONENTS ARE AVAILABLE--CALL FACTORY FOR DETAILS