



**Star  
Manufacturing  
International Inc.**

10 Sunnen Dr.  
St. Louis, MO 63143

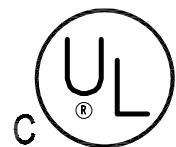
Phone: (314) 781-2777  
FAX: (314) 781-3636

**Installation and  
Operating  
Instructions**

2M-Z2153 Rev. A 8/24/99

# **SPLIT LID TABLE TOP CLAM SHELL TOASTER**

## **MODEL GR138TB2 120V**




## GENERAL INSTALLATION DATA



### CAUTION

This equipment is designed and sold for commercial use only by personnel trained and experienced in its operation and is not sold for consumer use in and around the home nor for use directly by the general public in food service locations.

### INSTALLATION

1. Plug unit into dedicated 120V A.C. line with 20AMP receptacle.
- 2, DO NOT plug into 220V line. Doing so will ruin the unit and void the warranty.
3. Each machine has been properly wired and inspected at the factory for operation on the voltage and type of current specified on the  nameplate.

### CAUTION

**DO NOT CONNECT TO ANY OTHER TYPE OF CURRENT OR THE MACHINE WILL BE SERIOUSLY DAMAGED.**

4. Level the unit using the adjustable feet in front of the unit (approximately 1/2" adjustment).
5. Place grease catcher cup under spout.
6. DO NOT operate without top burn guard in place.

### INITIAL STARTUP

Before using the unit for the first time, clean and heat for approximately 30 minutes.

## OPERATING INSTRUCTIONS

Make sure unit is plugged into 20AMP receptacle and is on a dedicated 120V A.C. line.

1. Turn unit on by placing switch in "ON" position. The "Heat On" light, program number and display will flash indicating unit is heating. When the preset temperature is reached, the heating light, display and program light indicator will stop flashing followed by 3 beeps. (Initial startup heating time is approximately 30 minutes)
2. Place product on the bottom cooking surface of the unit and close the lids.
3. Press program button and let displayed time count down to "0" at which time unit will beep. To turn off the beeper, press program button again.
4. Raise lids until it engages into first detent and remove food. Using spatula, scrape residue into grease catcher cup.  
Note: Metal utensils may be used, however, using nonmetal utensils will prolong the life of the cooking surface.
5. Turn the unit off when not in use.

### DO NOT ADJUST TIME AND TEMPERATURE

The unit time and temperature is preset by the factory to the specific customer requirements for flatbread and quesadillas. If adjustments are required for additional food products, please refer to the time or temperature programming section in this manual.

### TEMPERATURE/TIMER CONTROLLER OPERATION SPECIFICATIONS

Startup:

1. The preset time will flash until preset temperature is reached.
2. When the control reaches preset temperature, time display, heat on indicator and program indicator will stop flashing and the alarm will beep three times.

### **Temperature:**

1. To view the actual temperature, press and hold "Temp Button". Display will read "Lo F" if temperature is below 273°F and "Hi F" if temperature is above 573°F.

### **To Program Time and Temperature:**

1. Press and hold "Temp" (actual temperature displays).
2. While holding "TEMP", press and hold any program button on the Left PC board for 1 second, the LED above program lights and display reads " \_ \_ \_ \_ ". Enter the four - digit security code sequence, **4, 3, 2, 1**. Starting with the first digit, the center horizontal bar will light on each digit as the security code is entered. The security code **will not** show on display. Once the correct sequence has been entered, the preset time will be displayed and the LED for that program will begin to flash.
3. Set the time with the "+ or -" buttons.
4. **Press the "TEMP" button to save the time.**
5. The preset temperature will now be displayed.
6. Set the desired temperature for this program using the "+ or -" buttons.
7. **Press the "TEMP" button to save temperature and to exit programming mode for this program.** The LED will stop to flash but will remain lit.
8. Press any other program button within 15 seconds to continue programming without re-entering the security code.
3. While programming a program (LED is flashing), if no input is received for 15 seconds, the unit will revert to normal operation and the security code must be re-entered.

Note: Temperature settings are done with the **Left PC board** only. The time settings programmed on the Left PC board will also be programmed onto the **Right PC board**. See below to make changes to the **Right PC board** only. **Each programming change must be saved by pressing the "TEMP" button!**

### **Right PC board (Timer only):**

1. To Change the time on Right PC board, press and hold the "TEMP" button on the Left PC board and press and hold any program button on the Right PC board for one second. The LED above the program button will light and the Right Display will read " \_ \_ \_ \_ ". Enter the four-digit security code sequence, **4, 3, 2, 1**. Starting with the first digit, the center horizontal bar will light on each digit as the security code is entered. The security code **will not** show on display. Once the correct sequence has been entered, the preset time will be displayed and the LED for that program will begin to flash.
2. Set the time with the "+ or -" buttons.
3. **Press the "TEMP" button to save the time.**
4. The LED will stop to flash but will remain lit.
5. Press any other program button within 15 seconds to continue programming without re-entering the security code.
6. While programming a program (LED is flashing), if no input is received for 15 seconds, the unit will revert to normal operation and the security code must be re-entered.

### **Operation:**

1. Pressing any program button (1-4) will start the timer countdown and display the preset time remaining. The LED for the appropriate program will be lit during countdown and remain lit until another program is selected.
2. When the display reaches "00:00", the buzzer will sound and the digits will flash.
3. Press the program button to silence the buzzer and return the readout to programmed time.
4. The Right and Left boards will operate independent of each other. Both timers can be in operation at the same time. The "00:00" display will show which side is timed out.

### **To program Security Code:**

1. With power **OFF**, hold buttons #1 and #2 on the **LEFT** board and turn **ON** the power switch. The digits will show the current Security Code.
2. Press "TEMP" button to return to normal operation, or to make changes, using the program buttons, enter new four digits Security Code 1, 2, 3, or 4.
3. Press "TEMP" to save and return to normal operation.

NOTE: A factory default Code may be hard programmed if desired.

### **CORD WITH 20 AMP PLUG**

Two cord take-up brackets are located on the bottom of the unit. These brackets are to be used to wrap up the excess cord in the event that the plug-in receptacle is located close to the unit. These brackets will prevent accidental damage to the power cord and prevent entanglement in the working mechanism of the unit.

### **MONTHLY LUBRICATION/ INSPECTION**

1. Apply two (2) drops of nontoxic mineral oil onto counter balance shaft and bronze nylon spacer.
2. Check all bolts/screws and tighten if necessary.

### **CLEANING**

All surfaces except the cooking grids are stainless steel and can be cleaned with a warm, damp cloth and detergent.



### **CAUTION**

**DO NOT IMMERSE OR LET THE UNIT STAND IN WATER.**

**DO NOT HOSE DOWN.**

**KEEP AWAY FROM RUNNING WATER.**

To remove burned on grease or food residue use the following mixture:

- 1 Tablespoon liquid dish detergent
- 1 Cup of warm water



### **CAUTION**

**For models with #4 programmed for "CLEAN" mode:**

1. Press #4 button.
2. Open toaster to allow faster cooling.
3. Alarm will sound when toaster is 350° F.
4. Turn unit **OFF**.
5. Unplug the unit.
6. Begin toaster cleaning procedure using answer system book 5, under toaster.

**BEFORE CLEANING ALL OTHER UNITS MAKE SURE POWER IS TURNED OFF AND UNIT IS UNPLUGGED.**

While holding top lid with one hand, apply this mixture to cold or warm top cooking surface with a sponge or plastic scrubbing pad. Wipe with clean sponge or towel until it is clean.

**DO NOT SPLASH CONTROL HOUSING!**

Do not splash metal conduit connecting top and bottom of the toaster!!

Empty and clean grease catcher cup as required using detergent and water after removing cup from unit.

### **MAINTENANCE AND REPAIRS**

Contact the factory, a service representative or a local service company for service or required maintenance.

RETAIN THIS MANUAL FOR FUTURE REFERENCE

PART NO. 2M-Z2153 REV. A 8/24/99



**Star Manufacturing  
International, Inc.**

10 Sunnen Drive  
P.O. Box 430129  
St. Louis, MO 63143

(800) 807-9054  
(314) 781-2777  
www.star-mfg.com

(800) 396-2677 Fax  
(314) 781-2714 Fax

## **STAR Sandwich Grill Set Up, Seasoning and Cleaning**

### **Set Up**

1. Unpack the grill.
2. Read the Owners manual and then put it in a safe place for future reference.
3. If surface rust is visible, use a steel wool brush and scrub it off.
4. Wipe down the exterior and grilling area with a damp cloth.
5. Take the grill to a well ventilated area and turn the thermostat to 8-9. If your unit has an electronic control then set the temperature for 450°F. Allow the unit to burn off the factory oil. (the oil is there to prevent surface rust during shipping and storage)
6. The "burn off" is complete when the smoke is gone, approximately 30 minutes.
7. Brush any debris from the grill surfaces.
8. Allow the grill to cool and then place it in its permanent position.

### **First Time Seasoning**

1. Bring the grill to 300°F and leave it on while doing the next three steps.
2. Spray the cooking area heavily with a baking release agent.
3. Let sit for 20 minutes.
4. Wipe surface clean with a warm, damp, cloth.

### **Daily Seasoning**

The grill should not require much seasoning while in use. In most cases, a light spray of the baking release agent in the morning and occasionally throughout the day will be enough to prevent any sticking. It is not necessary to spray before grilling each item.

### **Daily Cleaning**

1. If particles adhere to the cooking surface during the day, scrape them off with a spatula.  
**Note:** It is best not to let food cook on to the grill, as build up of food on the grill will increase sticking and smoking. In addition, carbon may build up on the grill surface and reduce the cooking efficiency.
2. At the end of the day, wipe down all surfaces with a warm, damp, cloth and mild detergent. Dry with a soft towel.

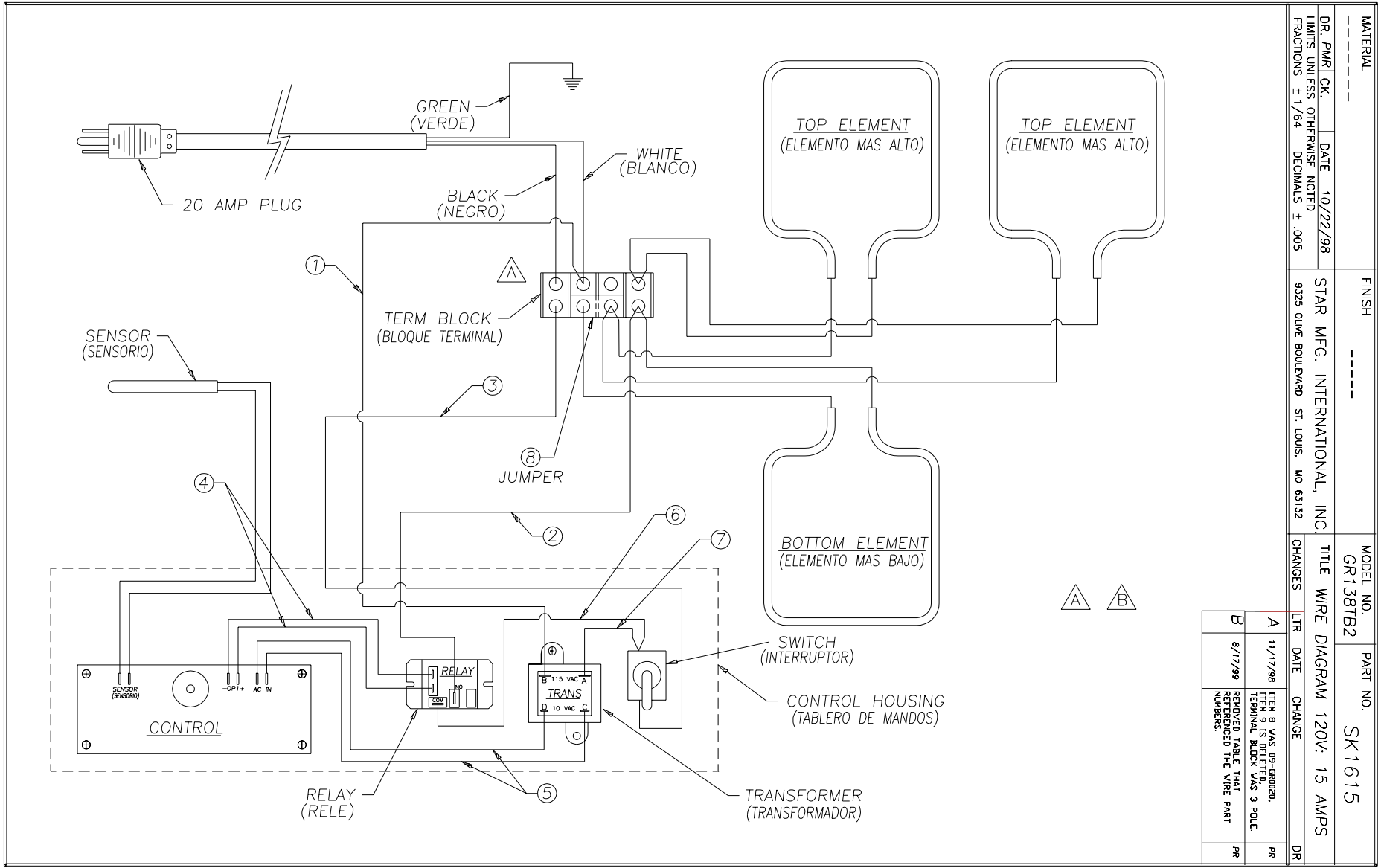
### **Carbon Cleaning**

When carbon build up occurs, use a carbon removal agent according to the instructions provided with the cleaner. When this process is completed, you must re-season the grill according to the First Time Seasoning instructions above.

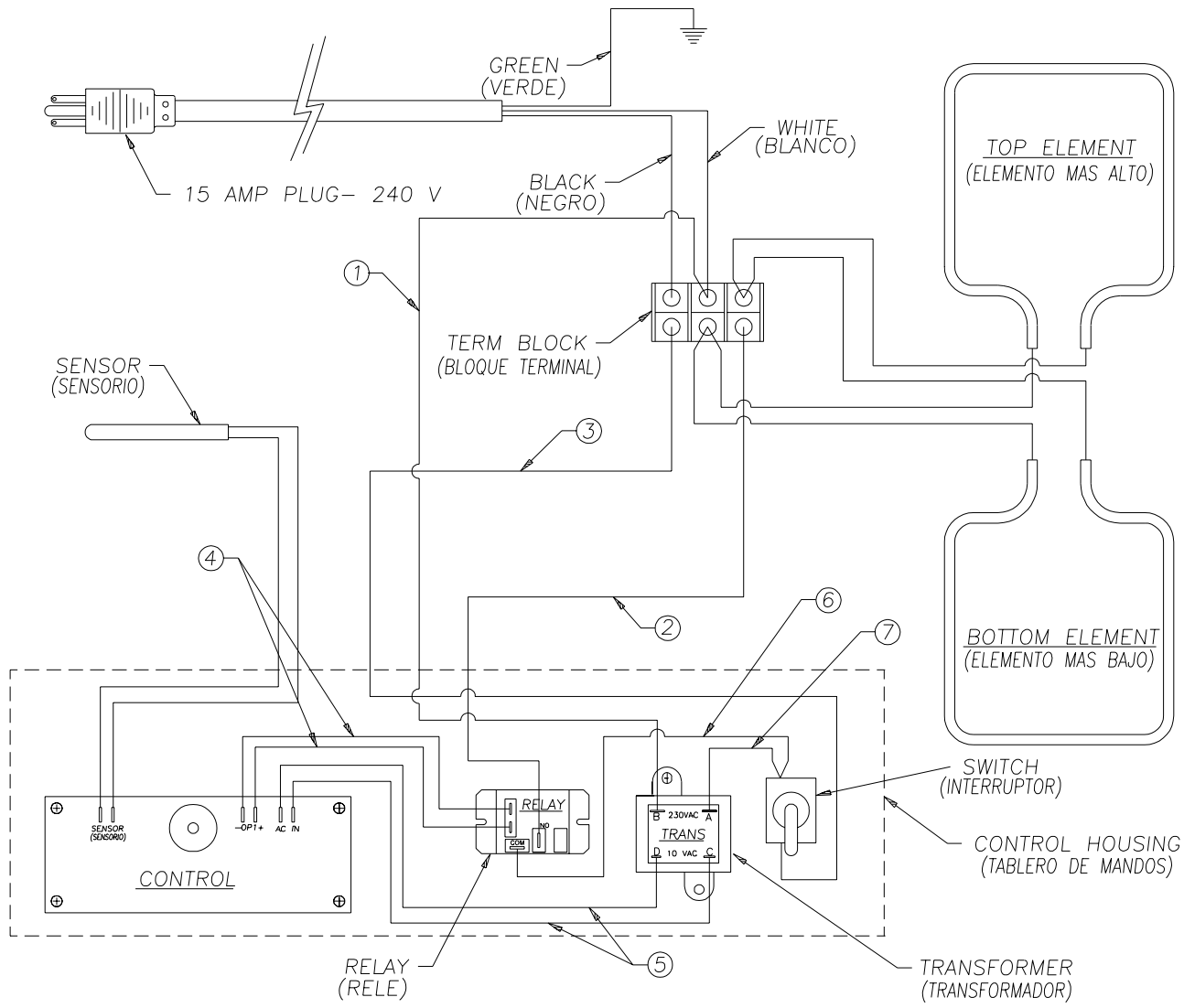
***Please reference your owner's manual for additional information  
concerning the operation of your grill.***



Ask for Quality and Performance by Name...Star and Holman  
Commercial Gas and Electric Equipment for the Foodservice Industry.

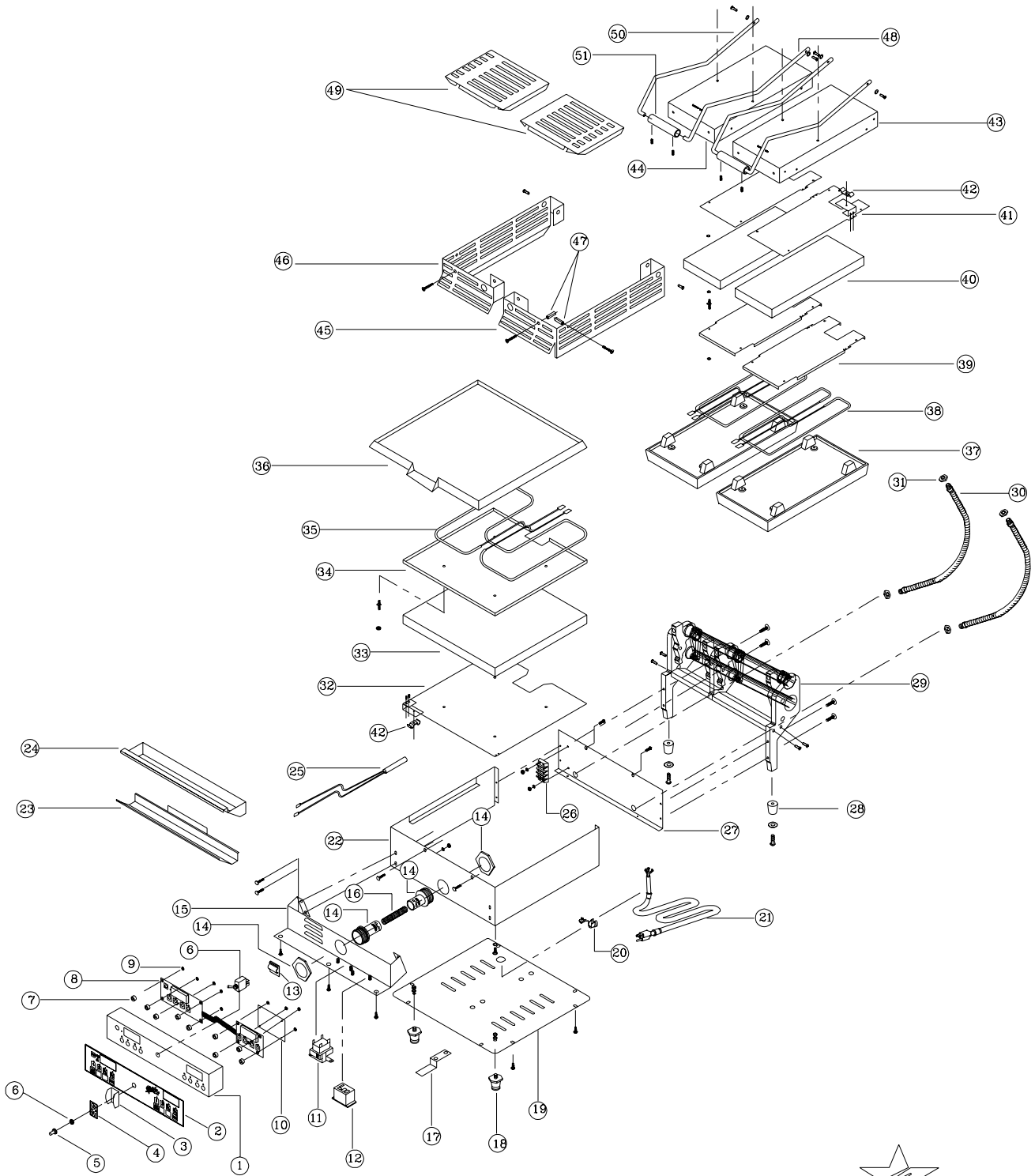


MATERIAL	---	FINISH	-----	MODEL NO.	GR138TB2	PART NO.	SK1615				
DR. PMR	CK.	DATE	10/22/98	STAR MFG. INTERNATIONAL, INC.	9325 OLIVE BOULEVARD	ST. LOUIS, MO 63132	TITLE	WIRE DIAGRAM 120V: 15 AMPS			
LIMITS UNLESS OTHERWISE NOTED		FRACTIONS ± 1/64		DECIMALS ± .005		CHANGES		LTR	DATE	CHANGE	DR
A	11/17/98	ITEM 8 WAS DELETED.		ITEM 9 IS DELETED.		TERMINAL BLOCK WAS 3 POLE.		PR			
B	8/17/99	REMOVED TABLE THAT REFERENCED THE WIRE PART NUMBERS.		PR							



A

MATERIAL		FINISH		MODEL NO.		PART NO.	
---		---		GR138TB		SK1661	
DR. TV	CK.	DATE	STAR MFG. INTERNATIONAL, INC.		TITLE WIRE DIAGRAM 240V: 6.9 AMPS		
LIMITS UNLESS OTHERWISE NOTED		3/11/99	10 SUNNEN DR. ST. LOUIS, MO. 63143		CHANGES		
FRACTIONS ± 1/64		DECIMALS ± .005			LTR	DATE	CHANGE
					A	8/17/99	REMOVED TABLE THAT REFERENCED WIRE PART NUMBERS.
							DR



MODEL GR138TB2 STAR MANUFACTURING INTERNATIONAL, INC.  
 120V SK1620 12-04-98 DR:TL

# PARTS LIST

EFFECTIVE 12/16/98

9D

GR138TB2 120V SPLIT LID TABLE TOP

MODEL CLAM SHELL TOASTER

Key Number	Part Number	Number Per Unit	Description
1	D9-GR0011	1	CONTROL HOUSING ASSY.
2	2M-Z1899	1	OVERLAY
3	Z1-70-07-0343	1	SWITCH GUARD
4	2M-12-07-0038	1	LABEL ON & OFF
5	2I-05-07-0013	1	BOOT SWITCH
6	2E-05-07-0012	1	SWITCH TOGGLE
7	2K-Z1971	9	SPACER
8	2J-Z1974	1	TIMER / TEMP CONTROL KIT
9	2C-Z2594	9	#6-32 HEX NUT W/LOCK NP
10	2E-Z2661	1	INSULATION - ELECTRICAL
11	2E-05-07-0351	1	TRANSFORMER 115/10V 6VA
12	2E-05-07-0352	1	RELAY 30 AMP
13	2C-09-07-0011	1	CLIP - CORD
14	2E-Z1517	2	1/2 CONN. W/LOCKNUT
15	D9-GR0012	1	BRACKET ASSY
16	D9-Z1518	1	CONDUIT BLK. CORRUGATED
17	D9-Z1471	2	CORD BRACKET
18	2A-Z1485	2	FOOT 1" ADJUSTABLE
19	D9-Z2034	1	BOTTOM
20	2K-Y3240	1	BUSHING 90 SR 17-2
21	2E-Z1484	1	CORD POWER
22	D9-Z1997	1	BODY
23	D9-Z2186	1	GREASE DRAWER GLIDE
24	D9-Z2187	1	GREASE DRAWER
25	2E-Z1470	1	SENSOR - RTD 2000 OHM
26	2E-Z2405	1	TERMINAL BLOCK - MARATHON 204
27	D9-GR0013	1	BACK PLATE ASSY
28	2A-Y3405	2	FOOT
29	2R-Z1973	1	COUNTER BALANCE
30	D9-Z2130	2	CONDUIT, FLEXIBLE
31	2E-Z1520	4	3/8 CONN. W/LOCKNUT
32	D9-GR0014	1	ELEMENT REATINER PLATE ASSY
33	Z1-06-07-0031	1	INSULATION, FIBERGLASS
34	D9-Z2000	1	ELEMENT PLATE - BOTTOM
35	2N-Z1897	1	ELEMENT, HEATING, BOTTOM, 1000W, 120V

**IMPORTANT: WHEN ORDERING, SPECIFY VOLTAGE OR TYPE GAS DESIRED  
INCLUDE MODEL AND SERIAL NUMBER**

PAGE 1  
OF 2

**Some items are included for illustrative purposes only and in certain instances may not be available.**



**Star Manufacturing International, Inc.** SK1621

# PARTSLIST

EFFECTIVE 12/16/98

9D

GR138TB2 120V SPLIT LID TABLE TOP

MODEL CLAM SHELL TOASTER

Key Number	Part Number	Number Per Unit	Description
36	D9-Z2234	1	CASTING, BOTTOM
37	2F-Z1900	2	CASTING, TOP
38	2N-Z1896	2	ELEMENT, HEATING, TOP, 400W, 120V
39	D9-Z2005	2	ELEMENT PLATE - TOP
40	D9-Z2133	2	INSULATION - FIBERGLASS - TOP
41	D9-GR0016	2	TOP RETAINING PLATE ASSY
42	D9-04-GR-0166	3	WIRE MOUNT
43	D9-GR0015	1	TOP HOUSING ASSY. - RIGHT
44	D9-GR0018	1	TOP HOUSING ASSY. - LEFT
45	D9-Z2007	1	SIDE BURN GUARD - RIGHT
46	D9-Z2006	1	SIDE BURN GUARD - LEFT
47	D9-Z1479	4	SLEEVE BURN GUARD
48	2R-Z1969	2	ARM - RIGHT
49	D9-GR0017	2	BURN GUARD TOP ASSY
50	2R-Z1968	2	ARM - LEFT
51	2V-Z2068	2	HANDLE

**IMPORTANT: WHEN ORDERING, SPECIFY VOLTAGE OR TYPE GAS DESIRED  
INCLUDE MODEL AND SERIAL NUMBER**

PAGE 2  
OF 2

**Some items are included for illustrative purposes only and in certain instances may not be available.**



**Star Manufacturing International, Inc.**

SK1621