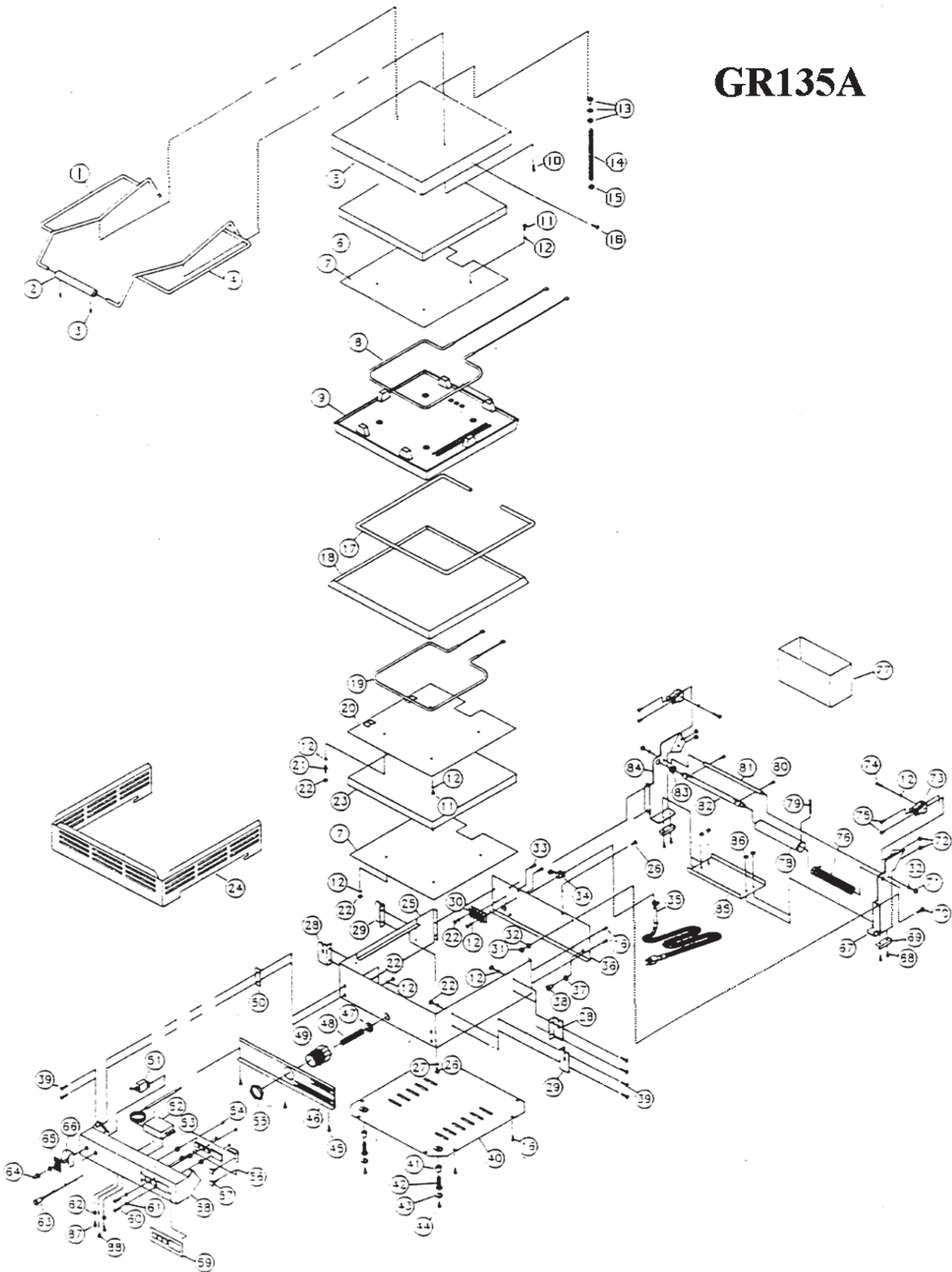


GR135A



MODEL TOASTSWELL SPEED GRILL MODEL GR135A

Key Number	Part Number	Number Per Unit	Description
1	D9-70-GR-0252	1	ROD: LEFT HANDLE
2	D9-70-GR-0175	1	HANDLE: LID
3	2C-08-07-0112	2	SCREW, 1/4-20 x 1/4
4	D9-70-GR-0253	1	ROD: RIGHT HANDLE
5	D9-04-GR-0001	1	HOUSING: UPPER
6	Z1-06-07-0026	1	INSULATION: 12" x 12"
7	D9-04-GR-0100	1	PLATE: ELEMENT No Longer Available
8	2N-05-GR-0165	1	ELEMENT, 700W (120V)
	2N-05-GR-0164	1	ELEMENT, 950W (208/240V)
9	2F-01-GR-0002	1	GRILL PLATE
10	2C-08-07-0001		SCREW, 10-32 x 5/8
11	2C-08-07-0141		SCREW, 8-32 x 3/8
12	2C-08-07-0017		LOCKWASHER, #8 internal
13	2C-08-07-0050	2	LOCKWASHER, 3/8" internal
	2C-08-GR-0011	2	BUSHING: CONDUIT
14	D9-05-GR-0029	1	CONDUIT: FLEXIBLE
15	2C-08-GR-0013	2	CLAMP: CONDUIT
16	2C-08-07-0230		SCREW, 8-32 x 17/32
17	D9-04-GR-0078	1	SPACER: COOKING SURFACE
18	2F-Z1491	1	GRILL PLATE
19	2N-05-GR-0164	1	ELEMENT, 950W (120V)
	2N-05-GR-0165	1	ELEMENT, 700W (208/240)
20	D9-30-GR-0011	1	ELEMENT PLATE w/CLIPS No Longer Available
21	2C-70-07-0161	4	STUD w/SQUARE NUT
22	2C-08-07-0018		NUT, 8-32
23	Z1-06-07-0031	1	INSULATION, 14" x 14"
24	D9-04-GR-0122	1	BURNGUARD, NEW STYLE (PICTURED)
	D9-30-GR-0089		BURNGUARD, OLD STYLE (not shown)(SPOT-WELDED)
25	D9-04-GR-0125	1	HOUSING: LOWER
26	2C-08-07-0117		SCREW, 10-24 x 3/4
27	2C-08-07-0093		LOCKWASHER, #10
28	D9-70-GR-0123	1	SUPPORT: LEFT BURNGUARD
29	D9-70-GR-0124	1	SUPPORT: RIGHT BURNGUARD
30	2C-05-07-0250	1	TERMINAL: 3 ROW
31	2C-08-07-0107		NUT, 1/4-20
32	2C-08-07-0262		LOCKWASHER, 1/4 internal
33	2C-08-07-0042		SCREW, 8-32 x 5/8
34	2K-05-07-0017	1	STRAIN RELIEF: CORDSET
35	D9-30-GR-0076	1	CORDSET: 5-15P, 120V
	D9-30-GR-0117	1	CORDSET: 6-15P, 208/240V
36	D9-04-GR-0127	1	COVER: BACK
37	2C-08-07-0050		LOCKWASHER, 3/8 internal
38	2C-08-GR-0011	2	BUSHING: CONDUIT
39	2C-08-07-0272	4	STUD, 8-32 x 1/2 self-clinching
40	D9-30-GR-0138	1	BOTTOM COVER
41	2A-09-GR-0023	4	SPACER: LEG
42	D9-50-GR-0118	4	LEG, ADJUSTABLE
43	2A-06-07-0027	4	FOOT
44	2C-08-07-0019		SCREW, #6 x 3/8
45	2C-08-07-0039		SCREW, 8-32 x 3/8
46	D9-04-GR-0141	1	COVER: TIMER BACK
47	2I-05-GR-0038	1	GROMMET: HOLE, 1 1/8 od x 5/8 id
48	D9-05-GR-0035	1	CONDUIT: BLACK NYLON
49	2C-05-GR-0182	1	FITTING: STRAIN RELIEF

IMPORTANT: WHEN ORDERING, SPECIFY VOLTAGE OR TYPE GAS DESIRED
INCLUDE MODEL AND SERIAL NUMBER

PAGE 1
OF 2

Some items are included for illustrative purposes only and in certain instances may not be available.



MODEL TOASTSWELL SPEED GRILL MODEL GR135A

Key Number	Part Number	Number Per Unit	Description
50	2I-06-GR-0003	1	GASKET: TEFLON
51	2E-05-07-0099	1	SWITCH: TOGGLE
52	2T-05-GR-0008	1	THERMOSTAT, 1-1/2" stem length
	2T-05-GR-0062	1	THERMOSTAT, 1/2" stem length
53	2K-09-GR-0014	1	SPACER, 1/2" od x .257 id x 3/8 (TIMER)
54	2C-08-07-0020		NUT, 6-32
55	2C-05-GR-0183		LOCKING NUT, BLACK
56	2P-05-GR-0060	1	TIMER: 99 SECOND W/BUZZER & TRANSFORMER (120V)
	2P-05-GR-0061	1	TIMER: 99 SECOND W/BUZZER & TRANSFORMER (208/240V)
57	2E-08-07-0121	1	SUPPORT: CIRCUIT BOARD
58	D9-04-GR-0140	1	HOUSING: TIMER
59	2M-12-GR-0020	1	OVERLAY: TIMER
60	2C-08-07-0208		SCREW, 6-32 x 3/4
61	2C-08-07-0059		LOCKWASHER, #6 internal
62	2C-08-07-0004		SPACER, 3/8" od x .171 id x .203 (THERMO)
63	D9-30-GR-0163	1	INDICATOR LIGHT (120V)
	D9-30-GR-0164	1	INDICATOR LIGHT (208/240V)
64	2I-05-07-0111	1	BOOT: SWITCH
65	2M-12-07-0038	1	LABEL: ON/OFF
66	Z1-04-07-0343	1	GUARD: SWITCH
67	D9-70-GR-0169	1	BRACKET: RIGHT HINGE
68	2c-08-07-0102		SCREW, 6-32 x 3/8
69	2A-06-07-0075	4	FOOT, 5/8 x 1-3/4 x 1/2 (BLACK)
70	2C-08-07-0261		SCREW: 1/4-20 x 3/4
71	2C-08-07-0040		NUT, 1/4-20
72	2C-08-07-0049		NUT: LOCK, 10-32 "TWIN-WHIZ"
73	D9-Z1975	1	CLIP: RETAINER
74	2C-08-07-0225		SCREW, 8-32 x 7/8
75	2C-08-07-0136		SCREW, 10-32 x 3/8
76	2P-09-GR-0001	1	SPRING: HINGE
77	2L-09-GR-0020	1	CONTAINER: GREASE
78	2P-09-07-0002	1	TUBE: SPRING COVER
79	2A-70-GR-0045	2	PIN: SPRING RETAINER
80	2C-08-07-0066		SCREW: 10-32 x 3/8
81	2A-Z7275	1	ROD: HINGE
82	2A-Z7276	1	SHAFT: HINGE
83	2A-09-GR-0003	2	BUSHING: HINGE SHAFT
84	D9-70-GR-0168	1	BRACKET: LEFT HINGE
85	D9-04-GR-0104	1	SUPPORT: GREASE CONTAINER
86	2C-08-07-0271		NUT, 6-32 x 1/4 x .09 thick; SELF-CLINCHING
87	2C-08-07-0038		SCREW, 6-32 x 9/16
88	2P-09-WB-0003	1	PLUG CAP
NI	2M-12-GR-0039	1	LABEL: CAUTION
NI	2M-12-07-0034	1	LABEL: WARNING-HIGH VOLTAGE
NI	2M-12-07-0035	1	LABEL: WARNING-GROUNDED OUTLET
NI	2C-05-07-0004		CONNECTOR: WIRE
NI	2C-05-07-0059		TIE: WIRE
NI	Z1-30-07-0070		LEADWIRE: 26" NAT/WHT TGGT
NI	Z1-30-07-0165		LEADWIRE: 26" NAT/WHT TGGT
NI	Z1-30-07-0081		LEADWIRE: 3 LEADS, BLUE SILICONE
NI	Z1-30-07-0082		LEADWIRE: 2 LEADS, BLUE/BLACK SILICONE
NI	Z1-30-07-0166		LEADWIRE: 26" NAT/WHT TGGT (H)

**IMPORTANT: WHEN ORDERING, SPECIFY VOLTAGE OR TYPE GAS DESIRED
INCLUDE MODEL AND SERIAL NUMBER**

PAGE 2
OF 2

Some items are included for illustrative purposes only and in certain instances may not be available.

