



**Star
Manufacturing
International Inc.**

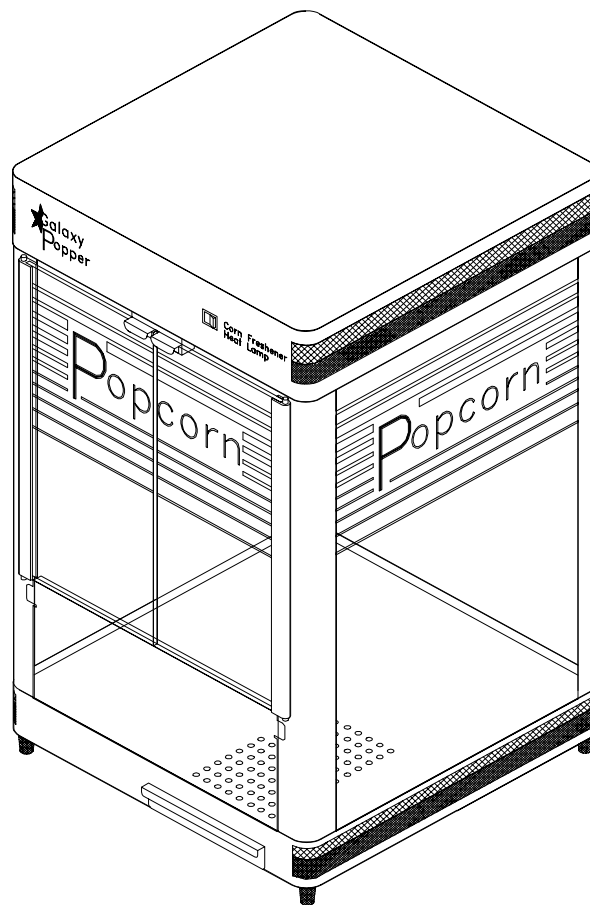
10 Sunnen Drive
St. Louis, MO 63143

Phone: (314) 781-2777
FAX: (314) 781-3636

**Installation
and
Operating
Instructions**

2M-Y8698 REV B 7/95

**GALAXY POPCORN WARMER
MODELS
GPW-8Y, GPW-14Y**



GENERAL INSTALLATION DATA



CAUTION

This equipment is designed and sold for commercial use only by personnel trained and experienced in its operation and is not sold for consumer use in and around the home nor for use directly by the general public in food service locations. For equipment to be used by the general public, please contact the factory.

THOROUGHLY INSPECT YOUR MACHINE ON ARRIVAL

We do everything in our power to insure delivery of your machine in perfect condition. However, there are instances in which the unit may be damaged in transit. In the event your unit is damaged in transit have the transportation company make the necessary notations on your freight bill or delivery receipt. Immediately report this damage to the dealer from whom you purchased the machine. The dealer will advise proper handling instructions. If damage is not discovered until after delivery has been made, notify the transportation company immediately. However, in each instance, request an inspection report to cover whatever damage has occurred in transit.

VOLTAGE

The warmer is equipped for use on the voltage specified on the nameplate.

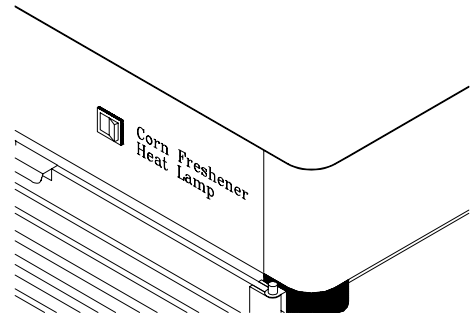


CAUTION

DO NOT CONNECT TO ANY OTHER TYPE OF CURRENT OR THE MACHINE WILL BE SERIOUSLY DAMAGED.

GENERAL OPERATING INSTRUCTIONS

Turn "ON" the Corn Freshener heat lamp switch. The switch controls the heat lamps, and a warming element in the bottom of the unit.



CLEANING

For retaining the high luster on the stainless steel, use a non-abrasive standard stainless steel cleaner. Use a damp cloth and warm mild soap solution to clean the glass and plastic surfaces.

MAINTENANCE AND REPAIRS

Contact the factory, a service representative or a local service company for service or required maintenance.

RETAIN THIS MANUAL FOR FUTURE REFERENCE
PART NO. 2M-Y8698

Rev. B 7-7-95

THOROUGHLY INSPECT YOUR UNIT ON ARRIVAL

This unit has been tested for proper operation before leaving our plant to insure delivery of your unit in perfect condition. However, there are instances in which the unit may be damaged in transit. In the event you discover any type of damage to your product upon receipt, you must immediately contact the transportation company who delivered the item to you and initiate your claim with same. If this procedure is not followed, it may affect the warranty status of the unit.

LIMITED EQUIPMENT WARRANTY

All workmanship and material in Star products have a one (1) year limited warranty on parts & labor in the United States and Canada. Such warranty is limited to the original purchaser only and shall be effective from the date the equipment is placed in service. Star's obligation under this warranty is limited to the repair of defects without charge, by the factory authorized service agency or one of its sub-agencies. Models that are considered portable (see below) should be taken to the closest Star service agency, transportation prepaid.

- > Star will not assume any responsibility for loss of revenue.
- > On all shipments outside the United States and Canada, see International Warranty.
- * The warranty period for the JetStar series six (6) ounce popcorn machines is two (2) years.
- * The warranty period for the Chrome-Max Griddles is five (5) years on the griddle surface. See detailed warranty provided with unit.
- * The warranty period for Teflon/Dura-Tec coatings is one year under normal use and reasonable care. This warranty does not apply if damage occurs to Teflon/Dura-Tec coatings from improper cleaning, maintenance, use of metallic utensils, or abrasive cleaners. This warranty does not apply to the "non-stick" properties of such materials.
- > This warranty does not apply to "Special Products" but to regular catalog items only. Star's warranty on "Special Products" is six (6) months on parts and ninety (90) days on labor.
- > This warranty does not apply to any item that is disassembled or tampered with for any purpose other than repair by a Star Authorized Service Center or the Service Center's sub-agency.
- > This warranty does not apply if damage occurs from improper installation, misuse, wrong voltage, wrong gas or operated contrary to the Installation and Operating instructions.
- > This warranty is not valid on Conveyor Ovens *unless* a "start-up/check-out" has been performed by a Factory Authorized Technician.

PARTS WARRANTY

Parts that are sold to repair out of warranty equipment are warranted for ninety (90) days. The part only is warranted. Labor to replace the part is chargeable to the customer.

SERVICES NOT COVERED BY WARRANTY

- | | |
|--|---|
| 1. Travel time and mileage rendered beyond the 50 mile radius limit | 10. Voltage conversions |
| 2. Mileage and travel time on portable equipment (<i>see below</i>) | 11. Gas conversions |
| 3. Labor to replace such items that can be replaced easily during a daily cleaning routine, ie; removable kettles on fryers, knobs, grease drawers on griddles, etc. | 12. Pilot light adjustment |
| 4. Installation of equipment | 13. Miscellaneous adjustments |
| 5. Damages due to improper installation | 14. Thermostat calibration and by-pass adjustment |
| 6. Damages from abuse or misuse | 15. Resetting of circuit breakers or safety controls |
| 7. Operated contrary to the Operating and Installation Instructions | 16. Replacement of bulbs |
| 8. Cleaning of equipment | 17. Replacement of fuses |
| 9. Seasoning of griddle plates | 18. Repair of damage created during transit, delivery, & installation OR created by acts of God |

PORTABLE EQUIPMENT

Star will not honor service bills that include travel time and mileage charges for servicing any products considered "Portable" including items listed below. These products should be taken to the Service Agency for repair:

- * The Model 510F Fryer.
- * The Model 526TO Toaster Oven.
- * The Model J4R, 4 oz. Popcorn Machine.
- * The Model CFS Series Food Steamer.
- * The Model 526WO Warming Oven.
- * The Model 518CM & 526CM Cheese Melter.
- * The Model 12MC & 15MC & 18MCP Hot Food Merchandisers.
- * The Model 12NCPW & 15NCPW Nacho Chip/Popcorn Warmer.
- * All Hot Dog Equipment **except Roller Grills & Drawer Bun Warmers.**
- * All Nacho Cheese Warmers **except Model 11WLA Series Nacho Cheese Warmer.**
- * All Condiment Dispensers **except the Model CSD & HPD Series Dispenser.**
- * All Specialty Food Warmers **except Model 130R, 500, 11RW Series, and 11WSA Series.**

ALL:

- * Pop-Up Toasters
- * Butter Dispensers
- * Pretzel Merchandisers
- * Pastry Display Cabinets
- * Nacho Chip Merchandisers
- * Accessories of any kind
- * Sneeze Guards
- * Pizza Ovens
- * Heat Lamps
- * Hot Cups
- * Pumps

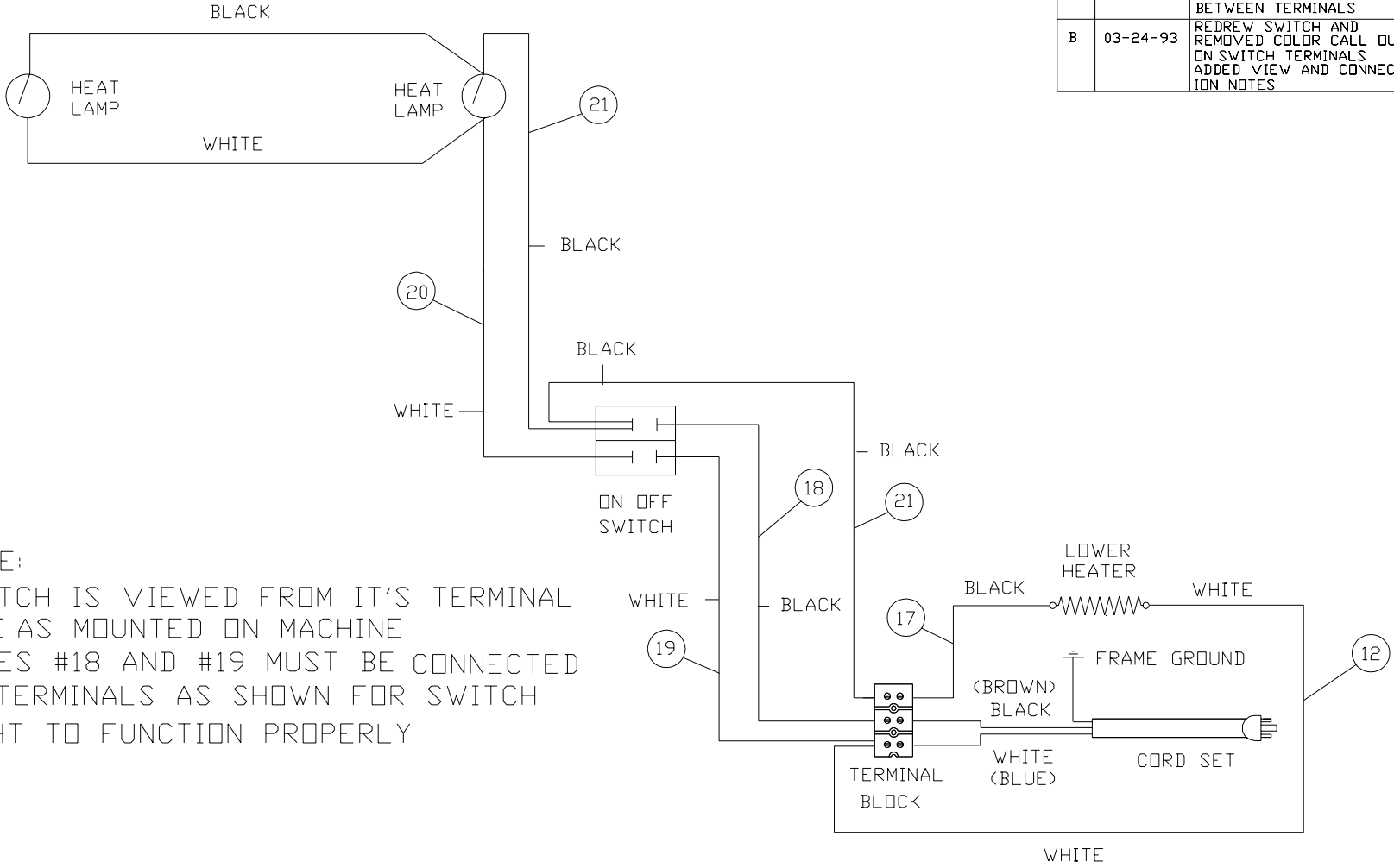
The foregoing warranty is in lieu of any and all other warranties expressed or implied and constitutes the entire warranty.

FOR ASSISTANCE

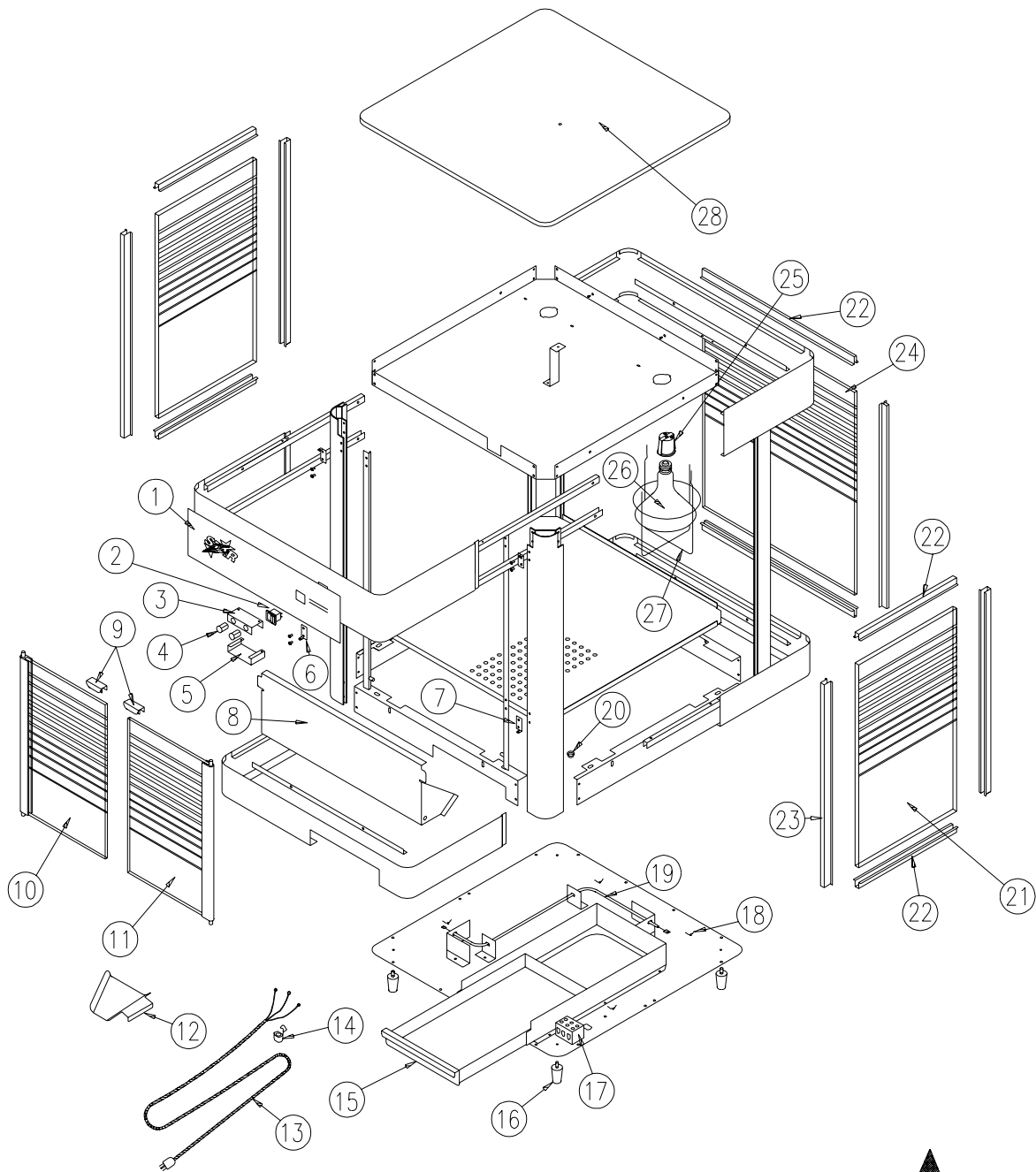
Should you need any assistance regarding the Operation or Maintenance of any Star equipment; write, phone, fax or email our Service Department. In all correspondence mention the Model number and the Serial number of your unit, and the voltage or type of gas you are using.

MATERIAL			FINISH		MODEL NO. GPW-8 & GPW-14		PART NO. SK 1203			
DR. R.T.	CK.	DATE 1-12-93	STAR MFG. INTERNATIONAL, INC.			TITLE WIRING DIAGRAM				
LIMITS UNLESS OTHERWISE NOTED FRACTIONS ± 1/64 DECIMALS ± .005			9325 OLIVE BOULEVARD ST. LOUIS, MO 63132			CHANGES	LTR	DATE	CHANGE	DR

-	02-16-93	RELEASED FOR PRODUCTION	R.T.
A	03-22-93	ADDED COLOR TO SWITCH TERMINALS AND LINE BETWEEN TERMINALS	R.T.
B	03-24-93	REDREW SWITCH AND REMOVED COLOR CALL OUT ON SWITCH TERMINALS ADDED VIEW AND CONNECTION NOTES	R.T.



NOTE:
SWITCH IS VIEWED FROM IT'S TERMINAL SIDE AS MOUNTED ON MACHINE
WIRES #18 AND #19 MUST BE CONNECTED TO TERMINALS AS SHOWN FOR SWITCH LIGHT TO FUNCTION PROPERLY



MODEL GPW-8Y
120/240V

STAR MANUFACTURING INTERNATIONAL, INC.

SK1249 5-14-93 DR: MN

PARTS LIST

EFFECTIVE 5-14-93

MODEL GPW-8 120/240V

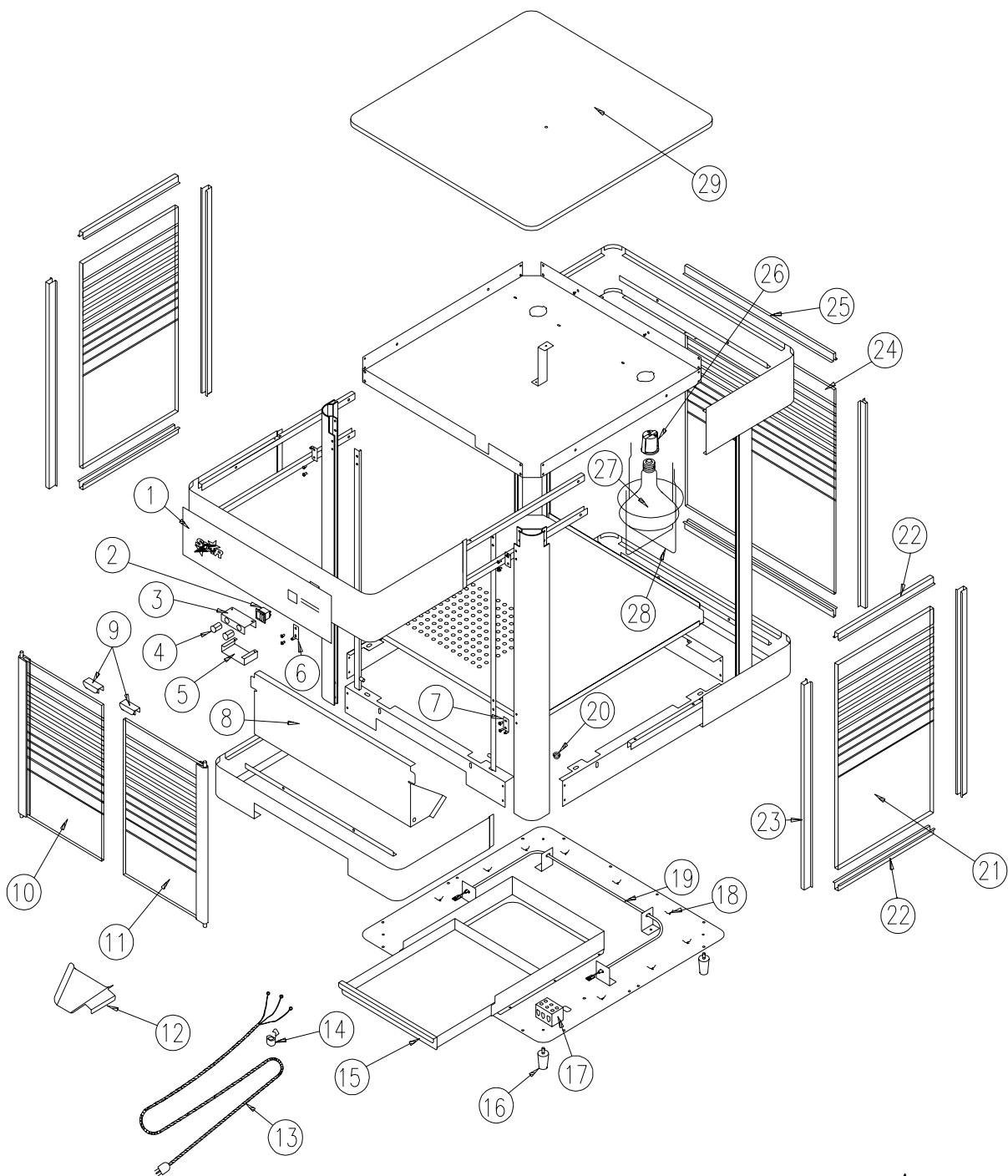
Key Number	Part Number	Number Per Unit	Description
-	2M-Y8602	2	LABEL STRIPE YEL/BLUE (Not Shown)
1	2M-Y8724	1	LABEL PANEL
2	2E-Y8785	1	SWITCH
3	C3-Y7952	1	BRACKET CATCH
4	2R-Y7844	2	CATCH MAGNETIC
5	C3-Y7953	1	COVER BRACKET
6	C3-Y7377	2	BRACKET HINGE LEFT
7	C3-Y7446	2	BRACKET HINGE RIGHT
8	C3-Y8187	1	LOWER DOOR
9	C3-G8004	2	DOOR PULL ASSEMBLY (INC.IN DOOR ASSYS.)
10	C3-G8054	1	LEFT DOOR ASSEMBLY
11	C3-G8053	1	RIGHT DOOR ASSEMBLY
12	C3-8334	1	SCOOP - POPCORN
13	E4-403009	1	CORD ASSY. 120V
13	C3-G8022	1	CORD ASSY. 240V
14	2K-Y2967	1	BUSHING-STRAIN RELIEF
15	C3-Y7940	1	DRAWER CORN
16	2A-6904	4	FOOT
17	2E-Y2849	1	BLOCK TERMINAL
18	2P-6475	4	CLIP-TY
19	2N-Y8502	1	ELEMENT 120V
19	2N-Y8430	1	ELEMENT 240V
20	2K-Y1139	2	BUSHING HEYCO
21	2Q-Y7830	2	GLASS SIDE
22	2I-Y7836	6	CHANNEL GLASS (TOP/BOTTOM)
23	2I-Y7840	6	CHANNEL GLASS (UPRIGHT)
24	2Q-Y8606	1	GLASS FRONT
25	2E-Y8212	2	SOCKET LAMP
26	2S-Y2238	2	LAMP-150W 120V
26	2S-Y8346	2	LAMP 150W 240V
27	2B-Y7829	2	LAMP SHIELD
28	C3-Y8721	1	TOP COVER

**IMPORTANT: WHEN ORDERING, SPECIFY VOLTAGE OR TYPE GAS DESIRED
INCLUDE MODEL AND SERIAL NUMBER**

PAGE 1
OF 1

Some items are included for illustrative purposes only and in certain instances may not be available.





STAR MANUFACTURING INTERNATIONAL, INC.

MODEL GPW-14
120/240V

SK1250 5-14-93 DR: MN

PARTS LIST

EFFECTIVE 5-14-93

MODEL GPW-14 120/240V

Key Number	Part Number	Number Per Unit	Description
-	2M-Y8601	2	LABEL STRIPE YEL/BLUE (Not Shown)
1	2M-Y8662	1	LABEL PANEL
2	2E-Y8785	1	SWITCH
3	C3-Y7952	1	BRACKET CATCH
4	2R-Y7844	2	CATCH MAGNETIC
5	C3-Y7953	1	COVER BRACKET
6	C3-Y7377	2	BRACKET HINGE LEFT
7	C3-Y7446	2	BRACKET HINGE RIGHT
8	C3-Y8188	1	LOWER DOOR
9	C3-G8004	2	DOOR PULL ASSEMBLY (INC.IN DOOR ASSYS.)
10	C3-G1458	1	LEFT DOOR ASSEMBLY
11	C3-G1457	1	RIGHT DOOR ASSEMBLY
12	C3-8334	1	SCOOP - POPCORN
13	C3-G8021	1	CORD ASSY. 120V
13	C3-G8022	1	CORD ASSY. 240V
14	2K-Y2967	1	BUSHING-STRAIN RELIEF
15	C3-Y8428	1	DRAWER CORN
16	2A-6904	4	FOOT
17	2E-Y2849	1	BLOCK TERMINAL
18	2P-6475	9	CLIP-TY
19	2N-Y8727	1	ELEMENT 120V
19	2N-Y8430	1	ELEMENT 240V
20	2K-Y1139	2	BUSHING HEYCO
21	2Q-Y7831	2	GLASS SIDE
22	2I-Y7838	4	CHANNEL GLASS (SIDE TOP/BOTTOM)
23	2I-Y7840	6	CHANNEL GLASS (UPRIGHT)
24	2Q-Y8605	1	GLASS FRONT
25	2I-Y7839	2	CHANNEL GLASS (FRONT TOP/BOTTOM)
26	2E-Y8212	2	SOCKET LAMP
27	2S-Y2238	2	LAMP-150W 120V
27	2S-Y8346	2	LAMP 150W 240V
28	2B-Y7829	2	LAMP SHIELD
29	C3-Y8663	1	TOP COVER

**IMPORTANT: WHEN ORDERING, SPECIFY VOLTAGE OR TYPE GAS DESIRED
INCLUDE MODEL AND SERIAL NUMBER**

PAGE 1
OF 1

Some items are included for illustrative purposes only and in certain instances may not be available.



Star Manufacturing International, Inc.

SK1253