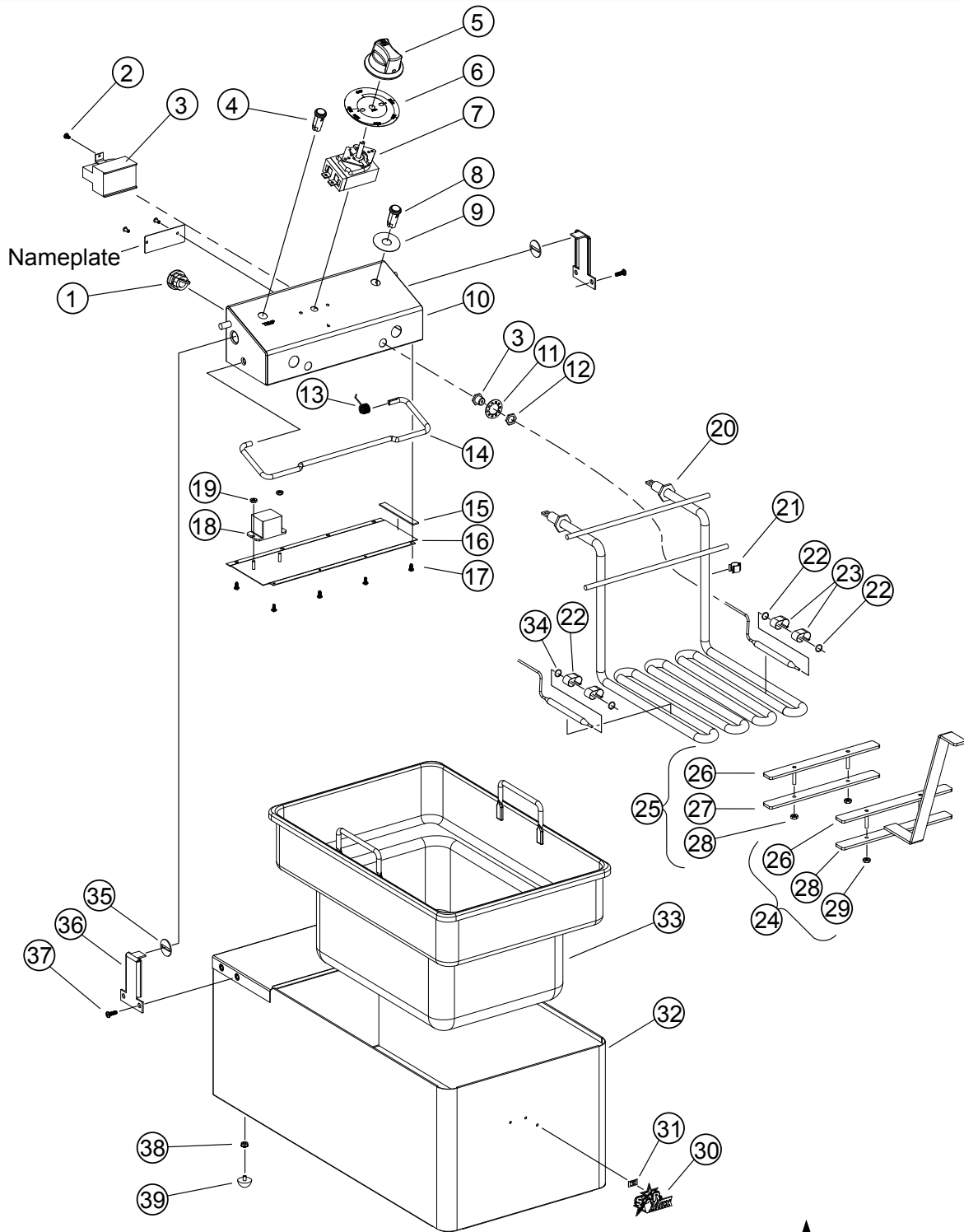


EXPLODED VIEW: 514LL 14lb COUNTERTOP ELECTRIC FRYER



Model: 514LL
14LB Electric Fryer



SK2950 Rev. - 1/26/2016

Model: 514LL Countertop Electric Fryer

Fig. No	Part Number	Quantity	Description
1	2K-Y2968	1	BUSHING - HEYCO 7W-2
2	2C-33922	2	SCREW 6-32X1/4 PH PAN TAP
3	2T-38656	1	THERMO SAFETY-MANUAL,440F
4	2J-30516	1	LIGHT SIGNAL AMBER M3938P
5	E1-Z20957	1	KNOB ASSEMBLY
6	2M-Z15483	1	LABEL, KNOB ELEC. FRYER
7	2T-30133	1	THERMO CTRL
8	2J-31157	1	LIGHT SIGNAL RED M3938PR
9	2M-34653	1	LABEL SAFETY RESET
10	E7-WL0036	1	BOX, CONTROL ASSY LLF-14
11	2C-45829	2	WASHER LOCK 5/8 ID INT SE
12	2C-307295	2	NUT 1/4NPT
13	2P-32428	1	SPRING SPRT ROD,F856-208
14	2A-32427	1	ROD SUPPORT SHORT HEAD
15	2I-35747	2	GASKET DRWR RWS CLOSED CE
16	DD-307336	1	COVER CONTROL BOX W/RELAY
17	2C-33935	8	SCREW 6ABX5/16 PH PAN SMS
18	2E-307333	1	RELAY 120VAC 30A
19	2C-32175	2	NUT 6-32 HEX MS THREAD NI
20	2N-45725UL	1	ELEM 120V FRYER LLF14
21	2C-38667	6	CLAMP CAPILLARY FLOOR FRY
22	2B-30792	2	RING WIRE SS .37 ID
23	2C-45777	4	CLAMP BULB LLF-14
24	DD-45783	1	HANDLE ELEM LIFT ASSY LLF
25	DD-65784	1	CLAMP KIT ELEM REAR
26	E7-45787	2	UPPER CLAMP LLF-14
27	E7-45784	1	LOWER CLAMP LLF-14
28	2C-35455	4	NUT 8-32 HEX MS SS
29	2A-45783	1	HANDLE ASSY LLF-14
30	2M-Z15804	1	LOGO, STAR-MAX
31	2C-8477	3	CLIP .125 PO STL PHOS
32	E7-45765	1	SHELL ASSY
33	2D-301344	1	POT ASSY - F SERIES FRYER
34	2B-35637	2	RING WIRE SS .25 ID
35	E7-33436	2	WASHER SLOTTED PIVOT BRKT
36	E7-45767	2	BRKT HEAD PIVOT LLF-14

PARTS LIST: 515F & F15 continued

Model: 514LL Countertop Electric Fryer			
Fig. No	Part Number	Qty	Description
37	2C-33890	4	SCREW 12-24X3/4PH PAN ROL
38	2C-31053	4	NUT 8-32 KEPS MS NICKEL
39	2A-45728	4	FOOT RUBBER LLW LLF
NI	2M-307306	1	DIA WIR LLF14 120-240V
NI	E7-307360	1	CORD SET LLF-14 120V
NI	2B-45731	2	BASKET FRYER LLF14