

CLEANING INSTRUCTIONS

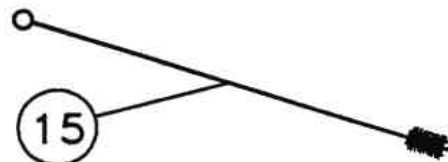
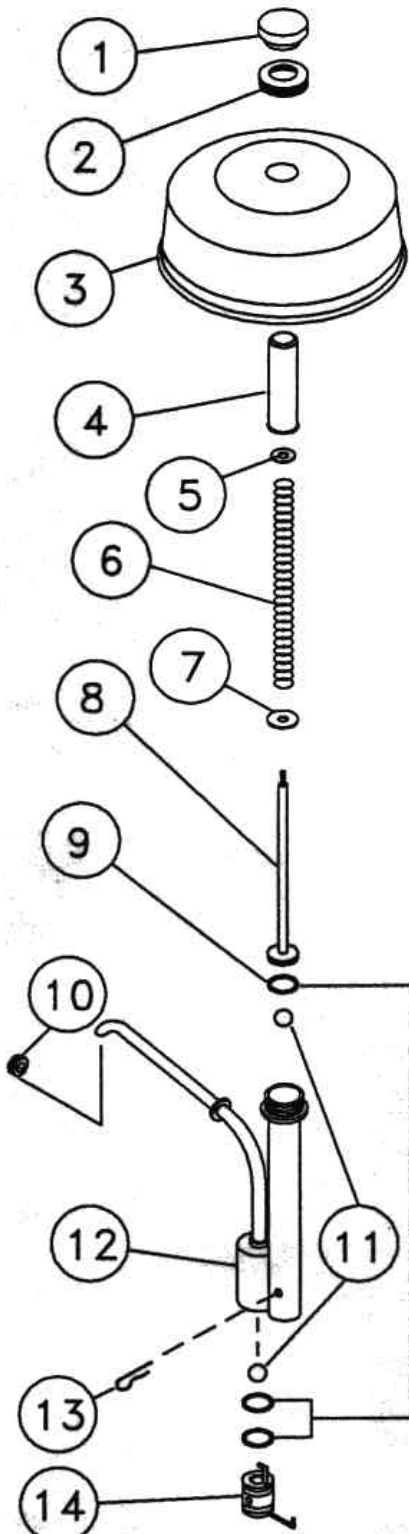
BEFORE USING AND AT LEAST DAILY, DISASSEMBLE THE PUMP AND WASH ALL PARTS.

TO DISASSEMBLE PUMP:

1. UNSCREW NUT-CYLINDER(2). PULL PUMP-PLUNGER(8) FROM PUMP ASSY(12).
2. UNSCREW KNOB(1) AND REMOVE PARTS.
3. REMOVE PIN-HITCH(13) AND BALL(11) FROM PUMP ASSY(12).
4. ROTATE PLUG(14) AT BOTTOM OF PUMP ASSY(12) TO DISENGAGE PIN OF PLUG(14) AND PULL FROM PUMP ASSY(12). A LOOSE BALL IS PART OF THIS ASSEMBLY AND CARE MUST BE TAKEN TO AVOID LOSING IT.
5. UNSCREW NUT-SLEEVE-TUBE(10) AND REMOVE THE PUMP(12) FROM COVER(3).
6. WASH ALL PARTS THOROUGHLY IN HOT SOAPY WATER AND RINSE THOROUGHLY. USE 18" LONG BRUSH(15) TO CLEAN INSIDE OF DISPENSING TUBE(12). REASSEMBLE PUMP. WHEN REASSEMBLING PUMP, WET O-RINGS(9) WITH EDIBLE VEGETABLE OIL, THEN REASSEMBLE. MAKE SURE ALL PARTS ARE IN THEIR PROPER PLACE.

PARTS LIST:

1.	2R-Y4145	KNOB	1
2.	2A-Y4133	NUT-CYLINDER	1
3.	2L-Y7618	COVER	1
4.	2V-Y7661	SHIELD-PLUNGER ...	1
5.	N2-Y8219	WASHER	1
6.	2P-Y7662	SPRING	1
7.	N2-Y4146	WASHER	1
8.	N2-30405	PUMP-PLUNGER	1
9.	2I-Y4143	O-RING	3
10.	2A-Y7658	NUT-SLEEVE-TUBE ..	1
11.	2P-Y6196	BALL	2
12.	N2-30406	PUMP ASSY	1
13.	2C-Y6879	PIN-HITCH	1
14.	N2-133008	PLUG	1
15.	2P-Y6211	BRUSH	1



MODEL 3P-A
PUMP

STAR MANUFACTURING INTERNATIONAL, INC.

2M-Y8898 07-20-93 DR: MP