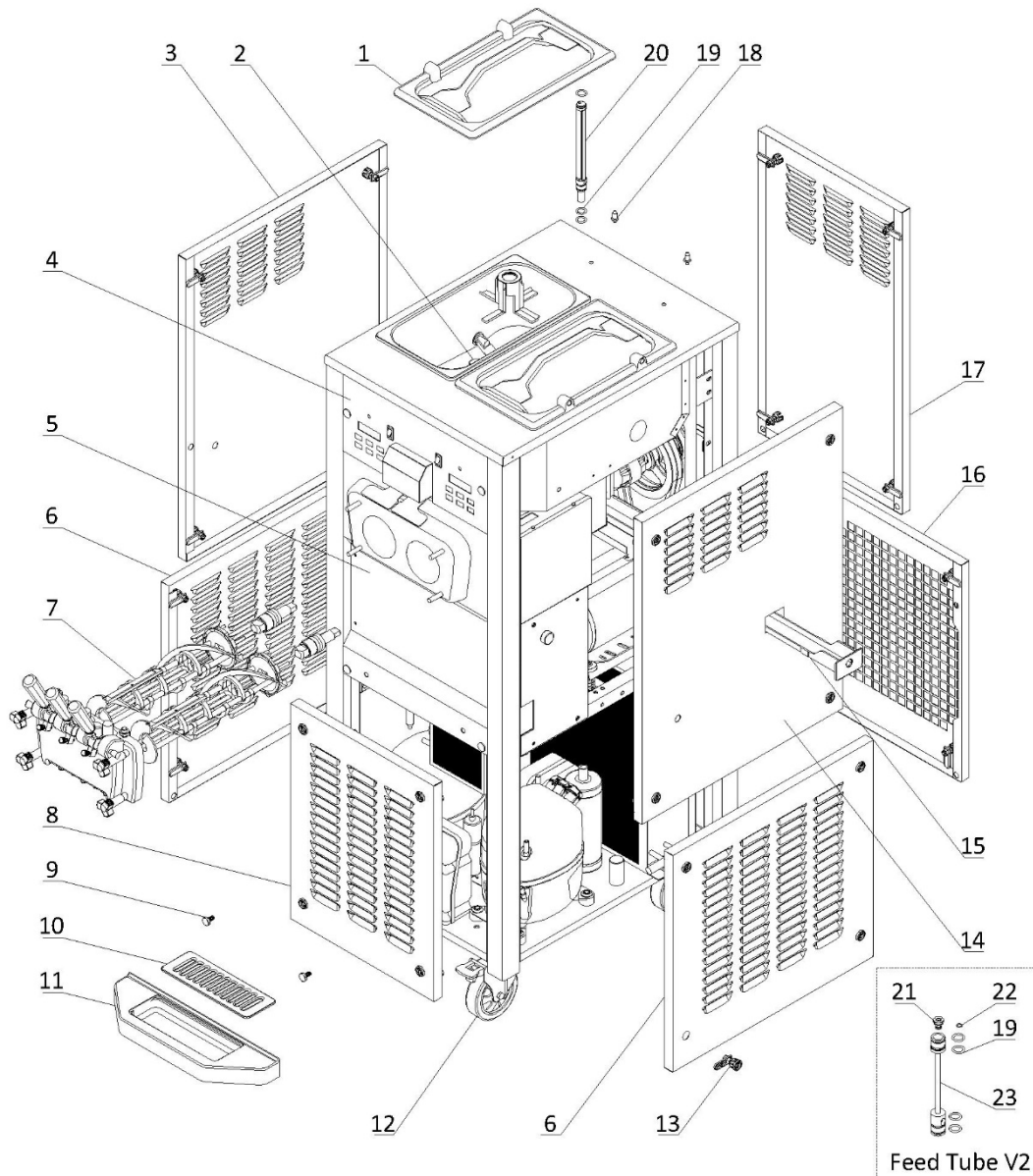


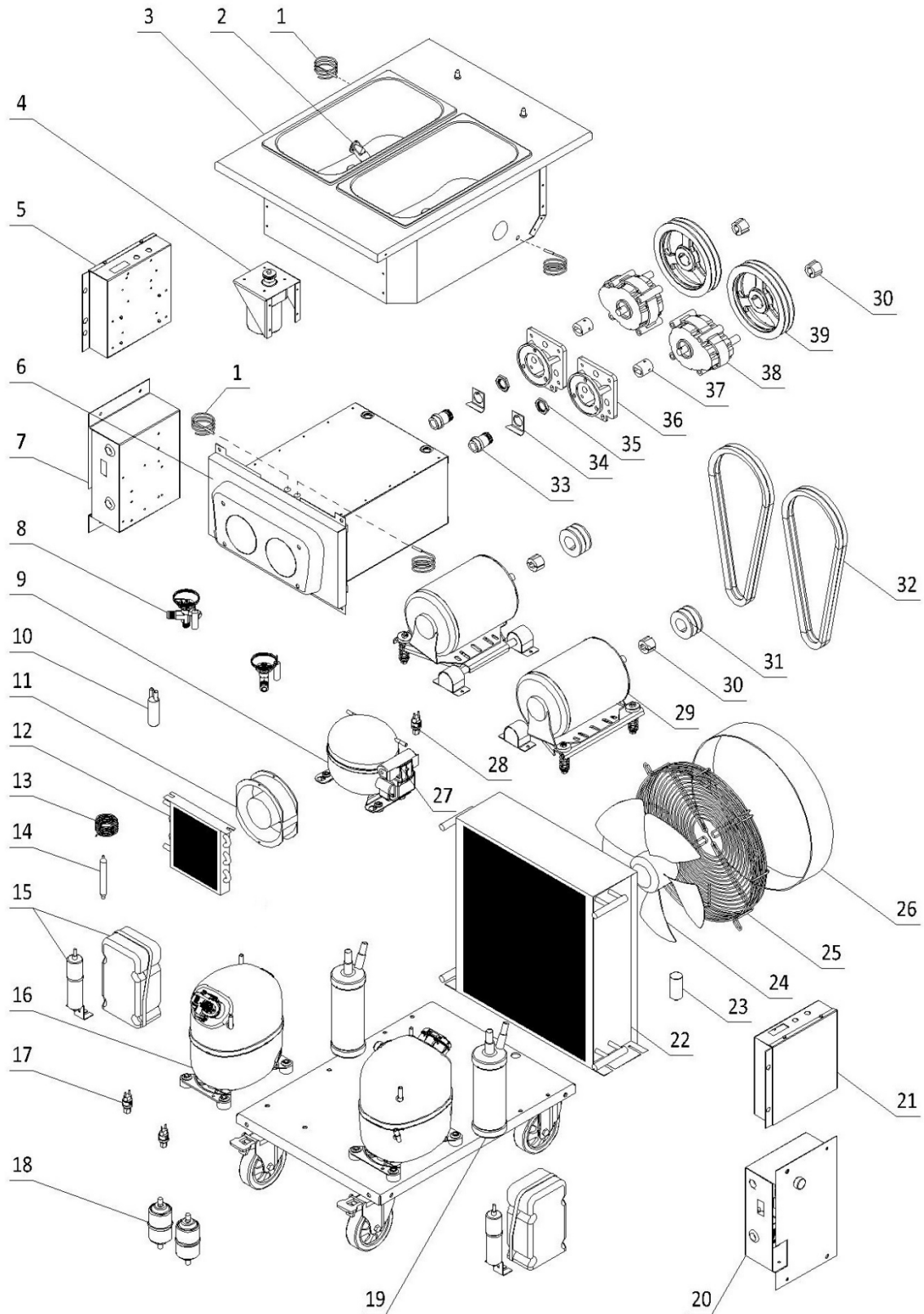
**1. External Parts**



## 1. External Parts

Item	Part Number	Description	Qty.
1	3.4.03.01.004	Hopper Lid - 12-15L	2
2	Page 8	Hopper Agitator	2
3	2.3.4.19.003	Panel - Upper Left - 2F - 3.4qt	1
4	Page 7	Draw Switch and Front control Panel	1
5	2.3.4.16.004	Panel - Middle Front - 2F - 3.4qt	1
6	2.3.4.22.003	Panel - Lower Left & Right - 2F - 3.4qt	2
7	Page 5	Dispensing Door and Beater	1
8	2.3.4.17.010	Panel - Lower Front - 2F - 3.4qt	1
9	3.6.39.004	Drip Tray Mounting Bolt	2
10	3.4.04.01.003-1	Splash Shield - Front Drip Tray - 44.5mm	1
11	3.4.04.01.003	Front Drip Tray - 44.5mm	1
12	3.3.05.02.002	Caster Swivel - 125X34	4
13	8.1.07.001	Panel Lock Assembly	28
14	2.3.4.21.003	Panel - Upper Right - 2F - 3.4qt	1
15	3.4.04.02.001	Internal Drip Tray - 45mm	1
16	2.3.4.15.003	Panel - Lower Rear - 2F - 3.4qt	1
17	2.3.4.14.003	Panel - Upper Rear - 2F - 3.4qt	1
18	3.6.39.011	Hopper Lid Holder	2
19	3.4.08.01.002	O-Ring - 18x2.2	3
20	2.1.3.39.0011	Air Tube - SS - Long - V3	2
21	2.1.3.23.0001	Air Tube Cap - SS - Small (Old Version)	2
22	3.4.08.01.028	O-Ring - 6.2x1.9 (Old Version)	2
23	3.4.07.04.020	Air Tube - SS - Long - V2 (Old Version)	2

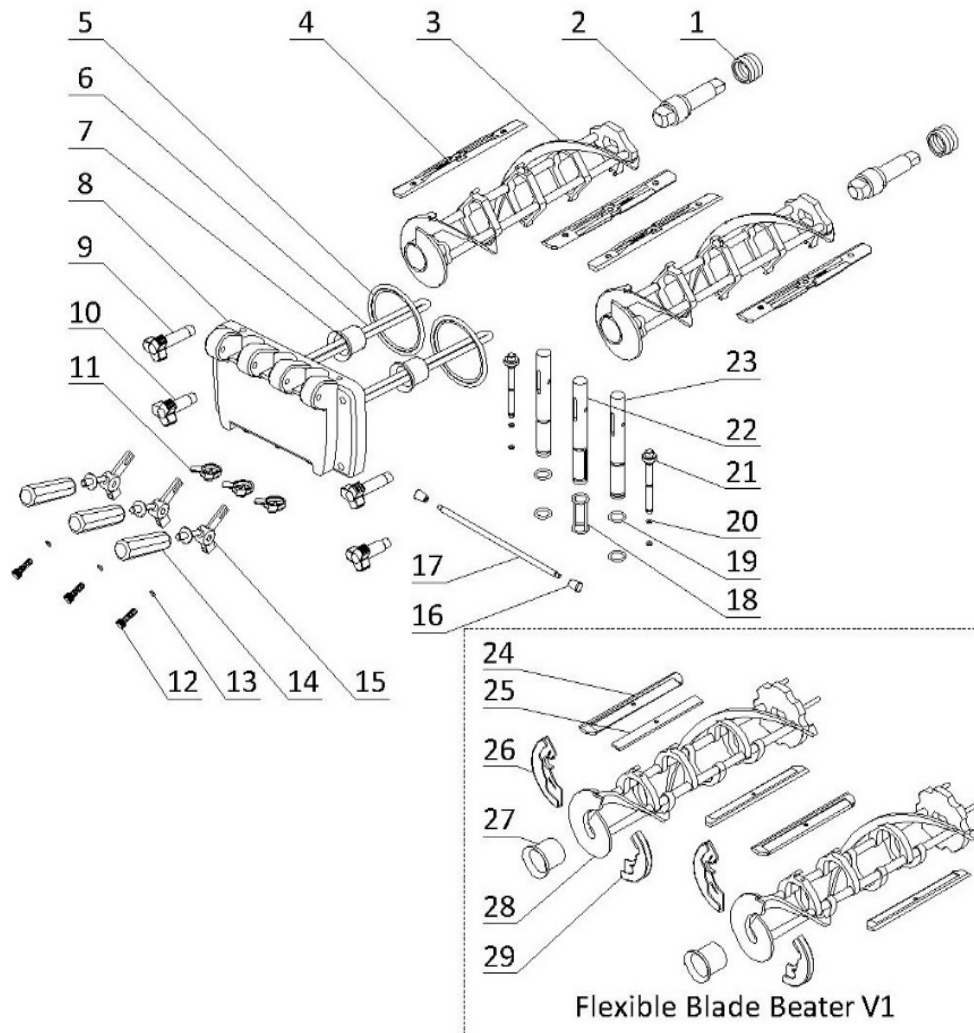
**2. Internal Parts**



## 2. Internal Parts

Item	Part Number	Description	Qty.
1	3.1.02.13.020	Temperature Probe - PT100	4
2	920.1.04.0002	Mix Low Sensor Assembly	2
3	2.1.1.03.0047	Hopper Assembly - 6260/6378/3678D	1
4	Page 8	Agitator Motor Assembly	1
5	Page 10	Power Control Box - Left	1
6	2.1.1.06.0045	Cylinder Assembly - 2F - 3.4qt	1
7	Page 9	Electrical Box - Left	1
8	3.2.04.01.001	Thermal Expansion Valve - T2	2
9	3.2.01.01.002.A	Auxiliary Compressor - EM30HHR	1
10	3.2.04.07.001	Suction Accumulator - 25×100×0.6	1
11	3.2.03.01.001	Fan Motor - BT220-15050S2HL	1
12	3.2.02.01.001	Auxiliary Condenser - Single - 0.7m <sup>2</sup>	1
13	3.2.05.01.002	Capillary Tube - 2×0.7	1
14	3.2.04.05.001	Filter Dryer - Hopper - 16×2.2×120	1
15	3.2.01.04.004	Start Component - Compressor - CAJ2464Z	2
16	3.2.01.02.005.A	Primary Compressor - CAJ2464Z	2
17	3.2.04.06.004	High Pressure Switch - 350~500psi	2
18	3.2.04.05.002	Filter Drier - Cylinder - DML083S	2
19	3.2.04.08.001	liquid Receiver - 76x280	2
20	Page 9	Electrical Box - Right	1
21	Page 10	Power Control Box - Right	1
22	3.2.02.01.010	Main Condenser - Dual - 15m <sup>2</sup>	1
23	3.2.03.04.001-2	Capacitor - Fan Motor - 450V - 5μF - CBB60	1
24/25	3.2.03.04.001	Fan Motor - 220/60/1 - YWF4E-350S	1
26	2.1.3.50.0002	Fan Shroud - 120mm	1
27	3.2.01.01.002-1	Start Component - Compressor - EM30HHR	1
28	3.2.04.06.003	High Pressure Switch - 250~350psi	1
29	3.3.01.04.005	Motor - 220/60/3 - 750W - P56AH60F41	2
30	3.3.04.01.005	Bushing - 1008-16	4
31	3.3.04.02.001	Pulley - Beater Motor - SPA63-2-1008	2
32	3.3.03.01.003	Belt - Motor - Beater - V-XPA1030	4
33	3.3.02.02.002	Rear Shell Bearing - SS (3.4qt) + FB	2
34	2.3.6.04.004	Lock Plate - Rear Shell Bearing - 42mm	2
35	3.3.02.02.010	Nut - Rear Shell Bearing	2
36	2.1.3.15.0004	Bracket - Gear Box - 3.4-7.3qt - 89mm	2
37	3.3.02.04.006	Coupling Drive - 3.4qt-4.0qt-7.3qt - 20mm	2
38	3.3.02.01.023	Gear Box - SS - 45*20 Shaft - 89mm	2
39	3.3.04.02.007	Pulley - Gear Box - SPA182-2-1008	2

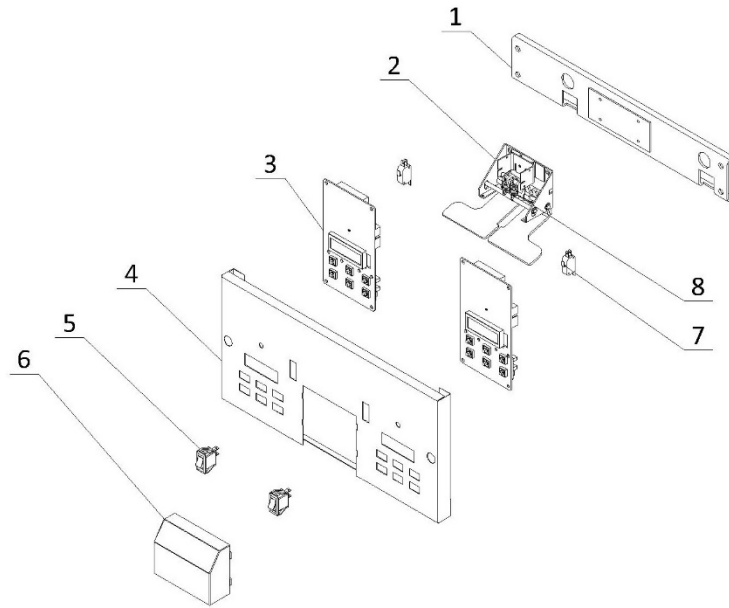
**3. Dispensing Door and Beater**



### 3. Dispensing Door and Beater

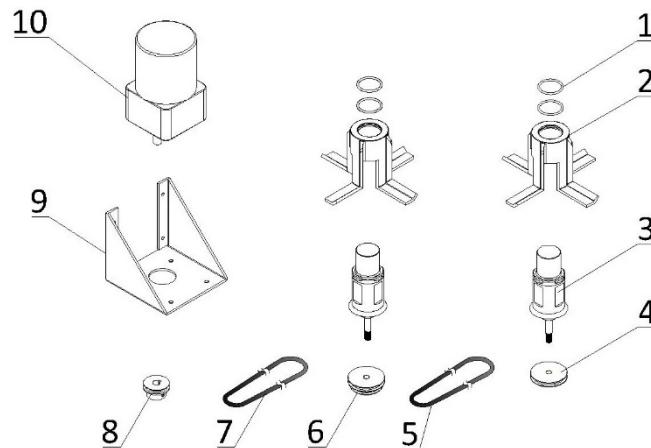
Item	Part Number	Description	Qty.
1	3.4.07.05.002	Gasket - Drive Shaft	2
2	2.1.3.25.0002	Drive Shaft - SS - 3.4qt	2
3	2.1.1.10.0018	Beater - SS - Large - 3.4qt - V2	2
4	3.4.02.01.004	Scraper Blade - Large - V2	4
5	3.4.08.02.008	Door Gasket - SS - 3.4qt	2
6	2.1.1.11.0002	Beater Rod - SS - Large - 3.4qt	2
7	3.4.01.03.008	Beater Guide - SS - 3.4qt - V2	2
8	2.1.3.14.0005	Dispensing Door - SS - 2F - 3.4qt	1
9	3.4.05.02.011	Hand Screw - Long - Dispensing - 3.4qt	2
10	3.4.05.02.009	Hand Screw - Short - Dispensing - 3.4qt	2
11	3.4.05.03.004	Design Cap - Double Triangle - 31mm	3
12	3.6.39.008	Adjustment Screw - Handle - 34mm	3
13	3.4.08.01.012	O-Ring - 3x1.5	3
14	3.4.05.01.001	Handle - Dispensing - SS	3
15	2.1.3.26.0002	Seat - Handle - 2F - 3.4qt	3
16	2.1.3.27.0003	Retention Pin - Handle - 2F - 3.4qt	1
17	2.1.3.27.0025	Nut - Retention Pin - Handle	2
18	3.4.08.01.015	H-Ring - 16.8x2.4x2	1
19	3.4.08.01.006	O-Ring - 16.8x2.4	4
20	3.4.08.01.013	O-Ring - 5.2x1.9	4
21	2.1.3.02.0015	Prime Plug - SS - Standard	2
22	2.1.3.02.0002	Draw Valve - SS - 2F - 3.4qt - Middle	1
23	2.1.3.01.0005	Draw Valve - SS - 2F - 3.4qt - Side	2
24	3.4.02.01.001	Plastic - Scraper Blade - 3.4qt (Old Version)	4
25	2.3.4.04.002	Clip - Scraper Blade - 3.4qt (Old Version)	4
26	3.4.01.01.001	Shoe - Left Large - 3.4qt (Old Version)	2
27	3.4.01.03.002	Beater Guide - SS - 3.4qt (Old Version)	2
28	2.1.1.10.0001	Beater - SS - Large - 3.4qt (Old Version)	2
29	3.4.01.02.001	Shoe - Right Large - 3.4qt (Old Version)	2

#### 4. Draw Switch and Front Control Panel



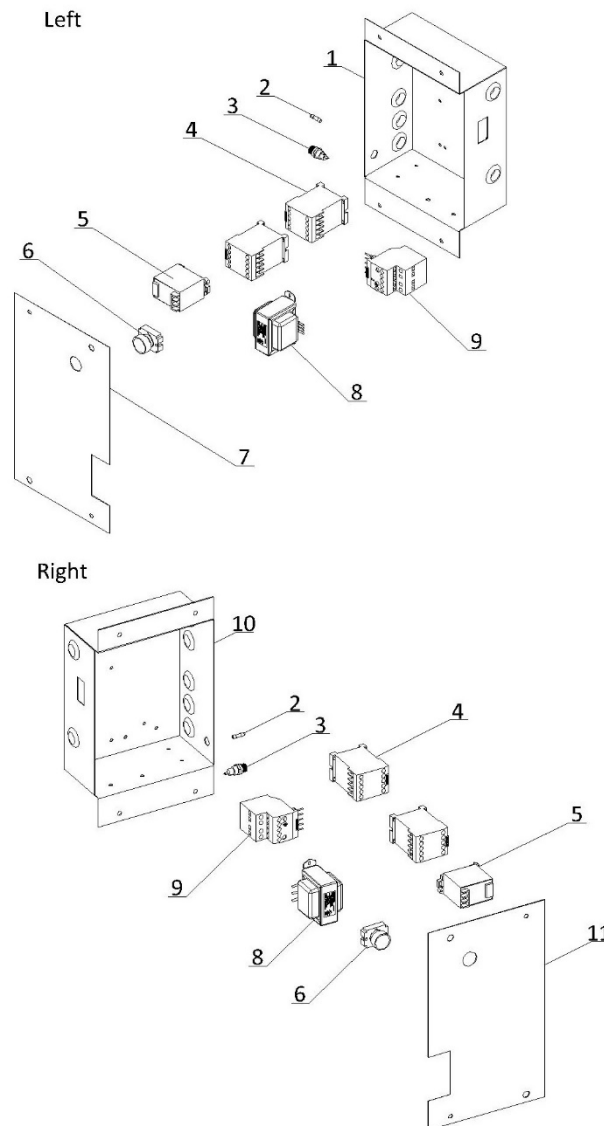
Item	Part Number	Description	Qty.
1	2.2.4.24.0001	Bracket - Draw Switch Assembly - 2F -3.4qt	1
2	2.1.1.19.0004	Draw Switch Assembly - 2F	1
3	2.2.1.01.0004	Control Board - SS - V2.152 - Standard	2
4	2.3.4.07.008	Panel - Draw Switch - 2F - 3.4qt	1
5	3.1.03.03.004	Power Switch - KCD1-2	2
6	3.4.07.07.004	Switch Cover - Standard	1
7	3.1.03.01.004	Micro Switch - KW-7-9	2
8	3.6.02.002	Spring - Draw Switch Assembly	2

## 5. Hopper Agitator



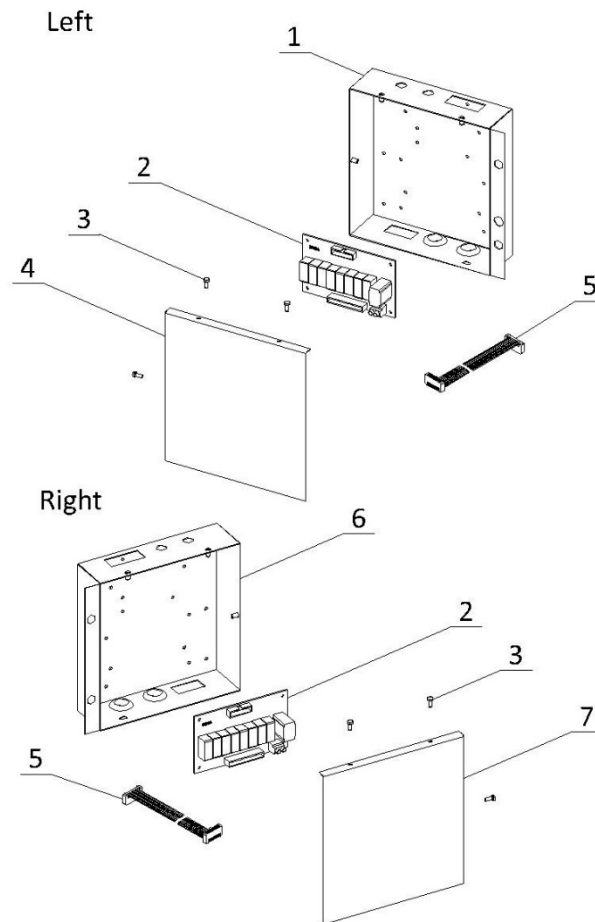
Item	Part Number	Description	Qty.
1	3.4.08.01.034	O-Ring - 31x2	4
2	2.1.1.23.0002	Blade - Hopper Agitator - Standard - V2	2
3	2.1.1.12.0002	Agitator Assembly - 137mm	2
4	2.1.4.02.015	Pulley - Hopper Agitator - Single - 53mm	1
5	2.1.4.08.003	Belt - Hopper Agitator - 600mm	1
6	2.1.4.02.016	Pulley - Hopper Agitator - Double - 53mm	1
7	2.1.4.08.047	Belt - Hopper Agitator - 280mm	1
8	3.3.04.04.006	Pulley - Hopper Agitator - Drive - 30mm	1
9	2.3.4.45.007	Bracket - Agitator Motor - 110mm	1
10	3.3.01.01.006	Motor - Agitator - 220V - YN80-25-6G	1

## 6. Electrical Box



Item	Part Number	Description	Qty.
1	2.2.4.18.0002	Electrical Box - Left - 2F - 3.4qt	1
2	3.1.02.08.002	Fuse - 0.5A	2
3	3.1.02.08.012	Seat - Fuse - 250V	2
4	3.1.01.01.010	Contactors - 220V - 3RT6017-1AN21	4
5	3.1.01.05.002	Arc Deflector - 3TX1-31A02	2
6	3.1.03.04.002	Reset Button - Thermal Overload	2
7	2.2.4.21.0002	Cover - Electrical Box - Left - 2F - 3.4qt	1
8	3.1.01.04.007	Transformer - 50W - 50313MW232	2
9	3.1.01.02.011	Thermal Overload Relay - 3RU6116-1GB0	2
10	2.2.4.19.0002	Electrical Box - Right - 2F - 3.4qt	1
11	2.2.4.22.0002	Cover - Electrical Box - Right - 2F - 3.4qt	1

## 7. Power Control Box



Item	Part Number	Description	Qty.
1	2.2.4.23.0005	Power Control Box - Left - 3.4qt	1
2	2.2.1.01.0007	Power Board - SS - V2.152	2
3	3.6.19.001	Screw - M4×8	6
4	2.2.4.23.0006	Cover - Power Control Box - Left - 3.4qt	1
5	3.1.04.01.003	Ribbon Cable - 20 Pin	2
6	2.2.4.23.0017	Power Control Box - Right - 3.4qt	1
7	2.2.4.23.0016	Cover - Power Control Box - Right - 3.4qt	1