

HISTORY INFORMATION FOR THE FOLLOWING MANUAL:

SERVICE MANUAL (UNIQUE)

GN2TR CHASSIS
Segment: QE- AMERICA

Version	Date	Subject
1	06/2016	1 st Issue.

LCD TV
SONY[®]

9-888-702-A1
For SM - Common , please refer :
9-888-702-0X

SERVICE MANUAL (UNIQUE)

GN2TR CHASSIS

Segment: QE- AMERICA

LCD TV

SONY®

MODEL LIST

<u>MODEL</u>	<u>REMOTE</u>	<u>DESTINATION</u>
XBR-65X750D	RMT-TX200U	LA1, UC2
XBR-65X755D	RMT-TX200B	CR1, LA8
XBR-65X757D	RMT-TX200B	CO1

TABLE OF CONTENTS

<i>Section Title</i>	<i>Page</i>
1. SAFETY NOTES	
1-1. Method to disassemble Under Cover.....	5
1-2. Procedure To Disassemble Smart Core.....	7
2. DIAGRAMS	
2-1. Board Location.....	14
2-2. Wire Dressing.....	15
3. DISASSEMBLY, EXPLODED VIEWS AND OTHER PARTS	
3-1. XBR-65X7*D.....	26

Please refer Service Manual – Common for below information :

- General Safety Notes
- Self Diagnostic Function
- Triage Chart
- Troubleshooting, Troubleshooting reference
- Adjustments
- Diagrams : Block Diagram , Connector Diagram

Note: Pictures provided in all this section might have slight difference from the actual sets

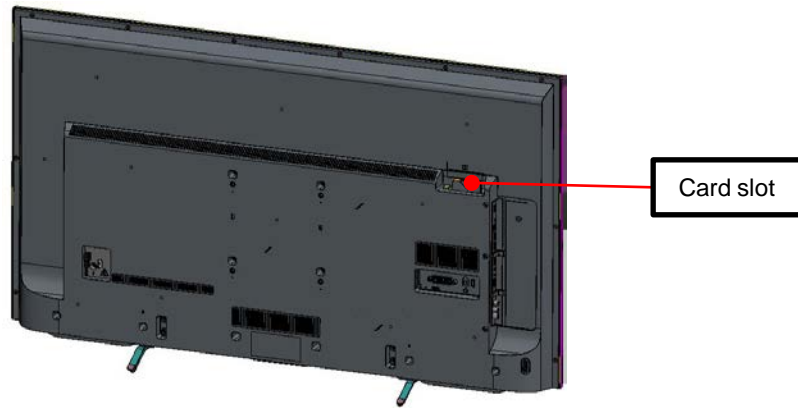
SECTION 1 DISSASSEMBLY AND REMOVAL CAUTION

CAUTION: During this disassemble, the TV set must lie above soft cushion / protection sheet. Use glove through out the process.

1-1. Method to disassemble Rear Cover

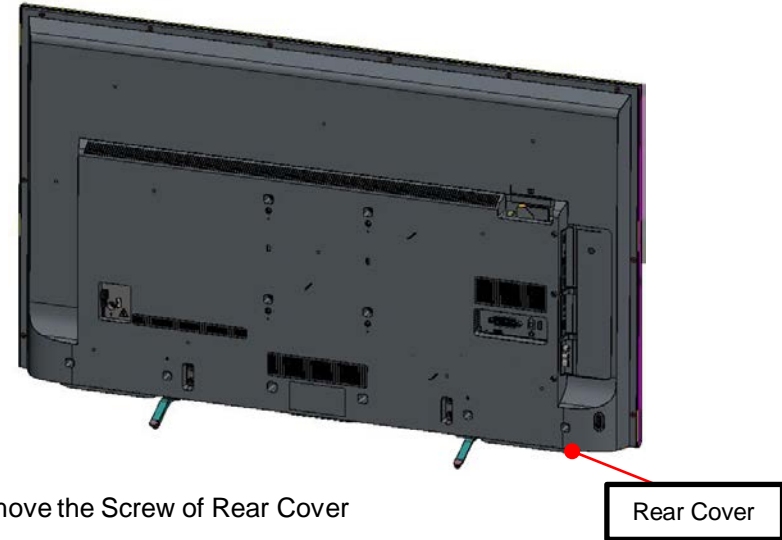
1-1-1. Step 1

Only EU/COL/J models



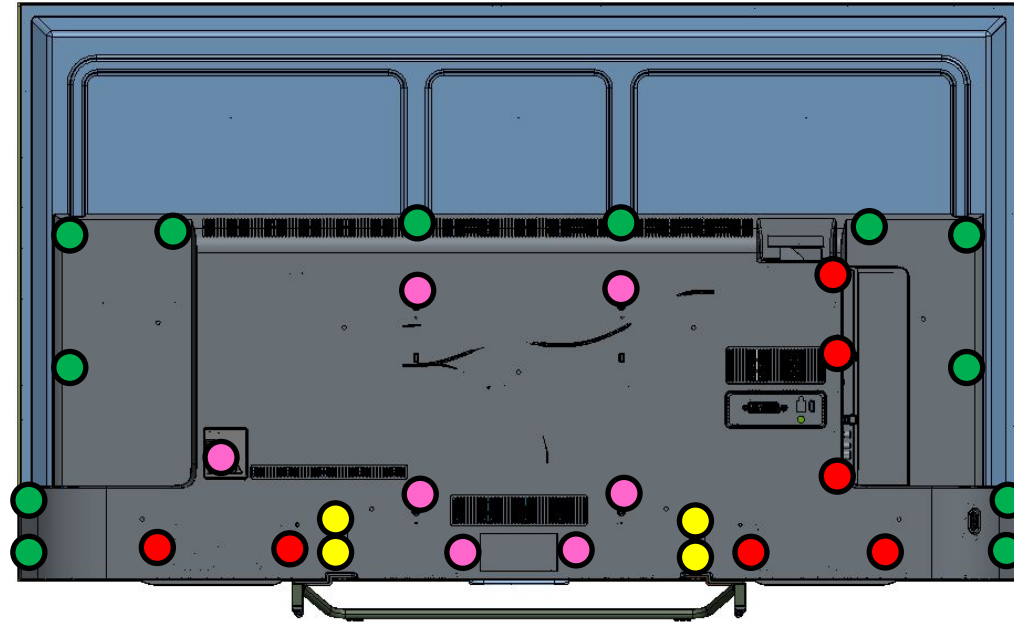
1. Remove any Card from Card slot.
(include Dummy Card and TOP FLAP FL)





1-1-2. Step 2



2. Remove the Screw of Rear Cover
-Detail of screw, please refer to screw type and quantity.

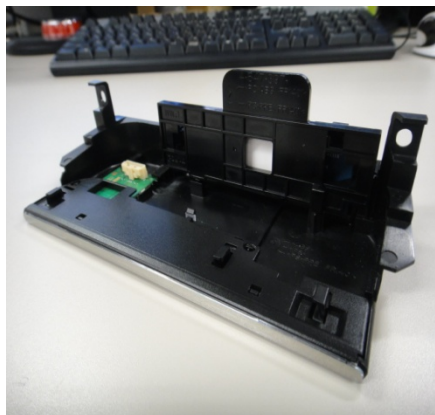
1-1-3.Screw type



		P/N	Remarks
	SCREW M3X3.0 STEP	4-579-926-01	
	SCREW, +PSW M5X20	4-567-082-01	*Stand user screw
	SCREW +BVTP 4X12 TYPE2 IT-3	2-580-693-01	
	SCREW, +PSW M4X10	4-159-298-01	

1-2. Procedure To Disassemble Smart Core

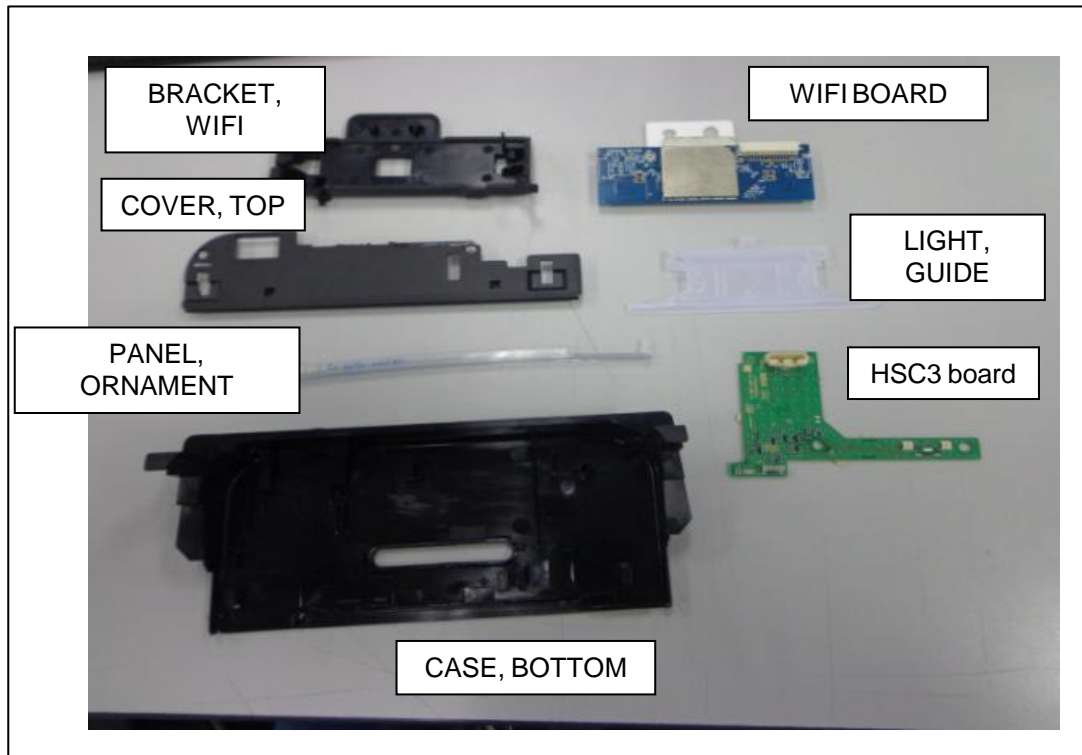
1-2-1. General



FRONT VIEW



BACK VIEW



BRACKET,
WIFI

WIFI BOARD

COVER, TOP

LIGHT,
GUIDE

PANEL,
ORNAMENT

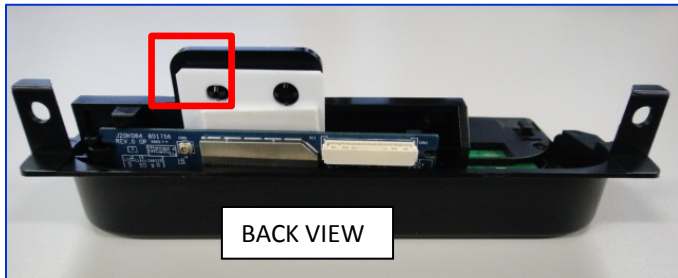
HSC3 board

CASE, BOTTOM

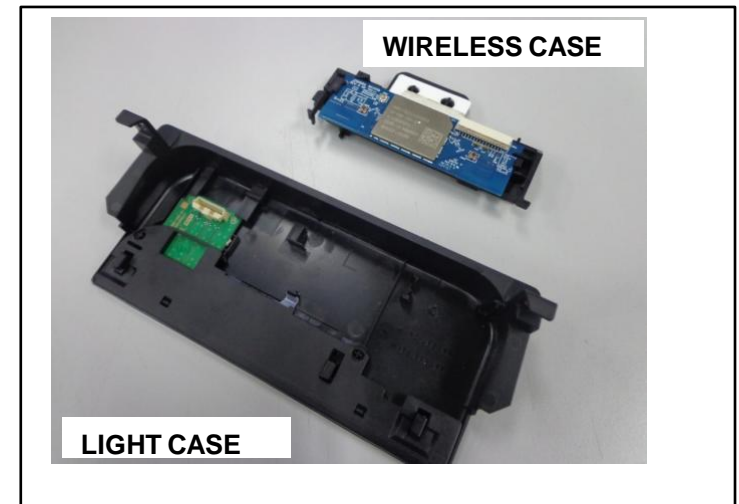
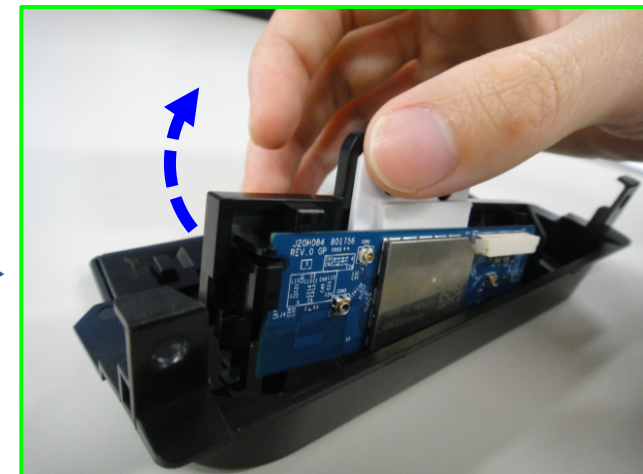
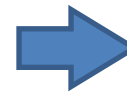
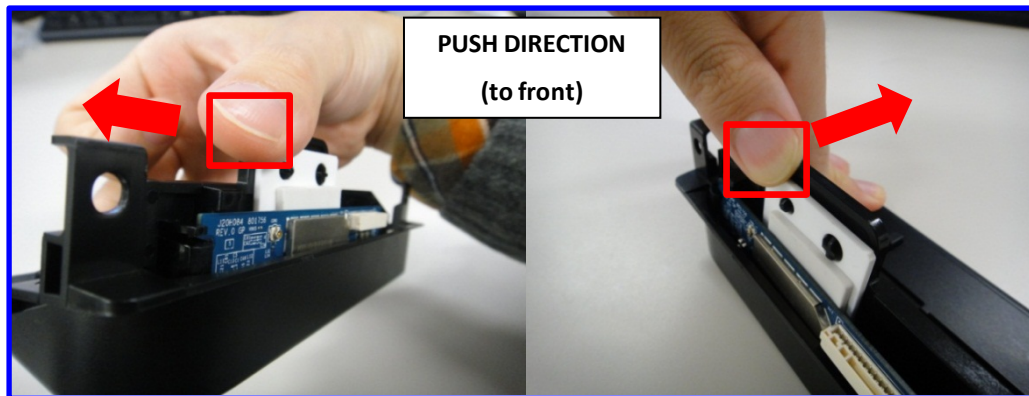
1-2. Procedure To Disassemble Smart Core

1-2-2. Smart Core Disassembly

Step 1 : Remove WIRELESS CASE by pushing the edge of Bracket Wi-Fi as shown.



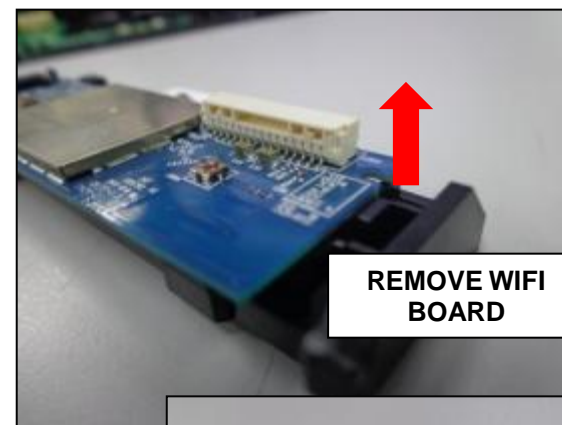
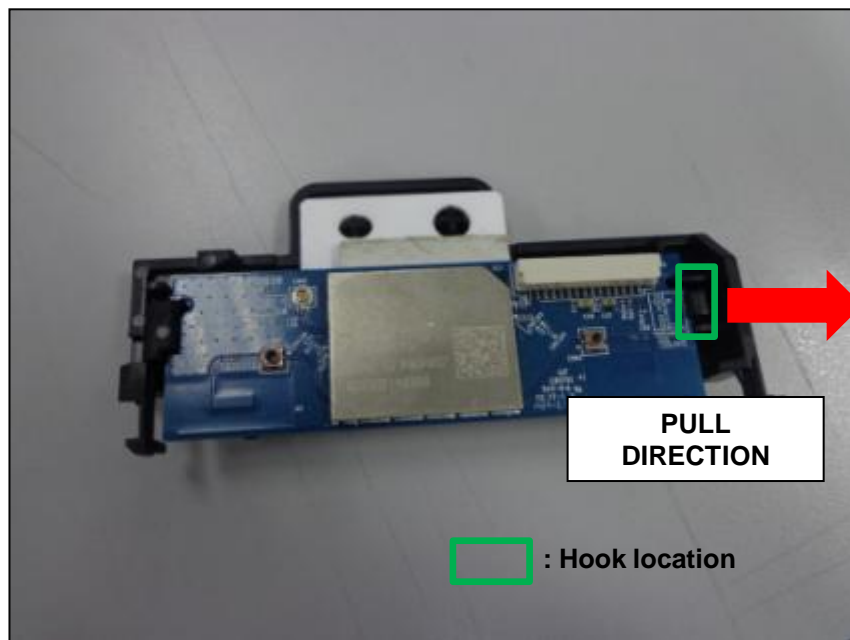
 : Location to push



1-2. Procedure To Disassemble Smart Core

1-2-3. Wireless Case Disassembly

i) Detach from hook (1 location)



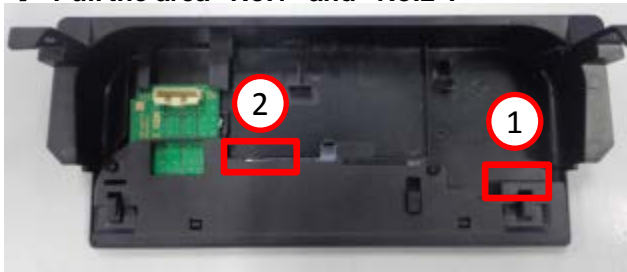
1-2. Procedure To Disassemble Smart Core

1-2-4. Light Case Disassembly

a) Disassembly of "COVER, TOP"

Step 1: Detach "Cover Top" as shown below.

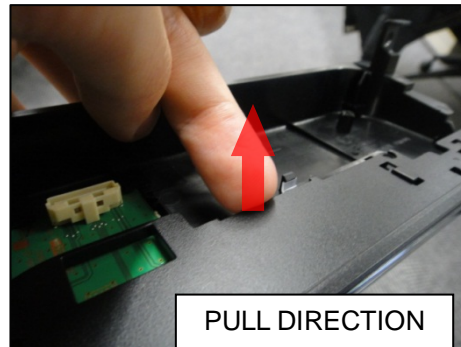
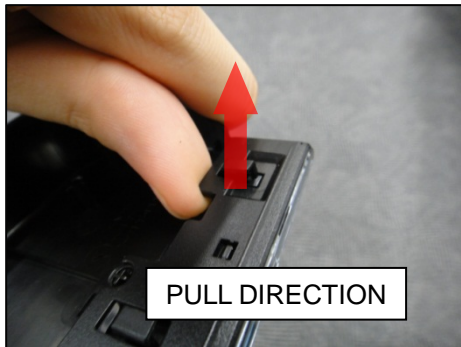
→ *Pull the area "No.1" and "No.2".



 : Location to pull

Take out hook at No.1 area

Take out hook at No.2 area



After pull No.1 area, pull the No.2 area.



1-2. Procedure To Disassemble Smart Core

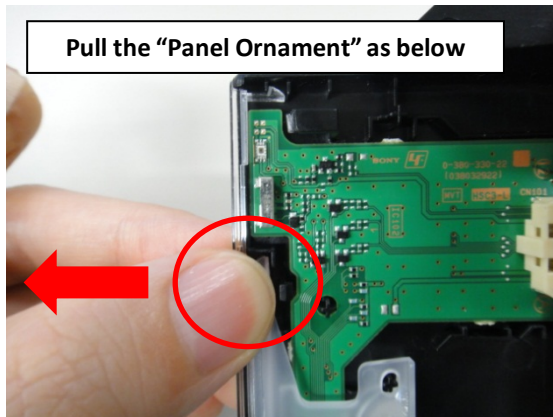
1-2-4. Light Case Disassembly

b) Disassembly of "PANEL, ORNAMENT"

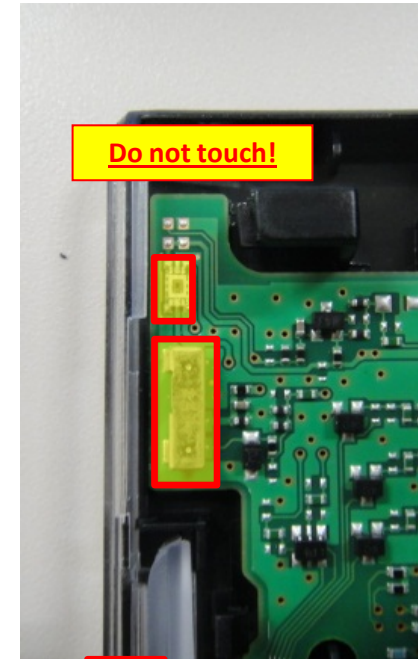
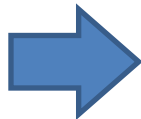
Step 2 : Detach "PANEL, ORNAMENT" as shown below.




 : Location to pull



Pull the "Panel Ornament" as below



Do not touch!

 : component

Caution Point: Avoid touching board components


1-2. Procedure To Disassemble Smart Core

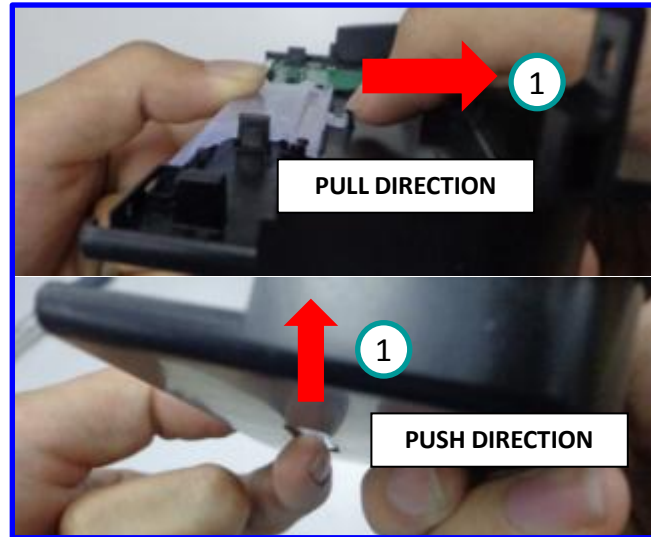
1-2-4. Light Case Disassembly

c) Disassembly of "LIGHT, GUIDE"

Step 3.1 : Detach LIGHT, GUIDE from hook and push LIGHT, GUIDE from bottom simultaneously.



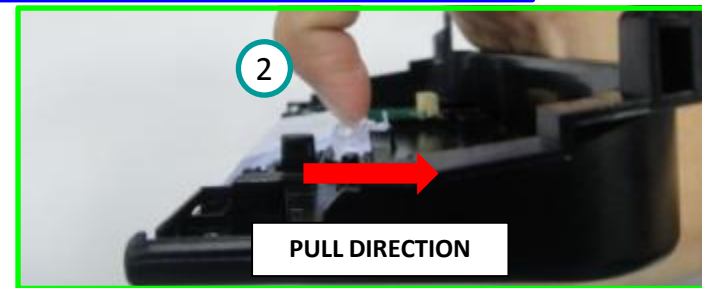
 : Hook location



Step 3.2 : Pull the LIGHT, GUIDE inwards to remove it

Remarks:

Step 2 is important to avoid hook broken from Case, Bottom and Light, Guide.

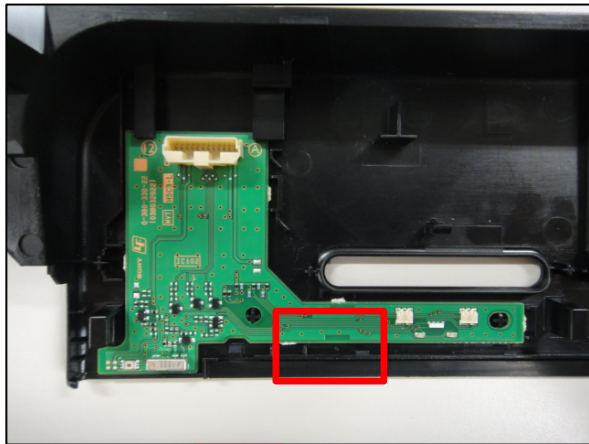


1-2. Procedure To Disassemble Smart Core

1-2-4. Light Case Disassembly

d) Disassembly of "HSC3 Board"

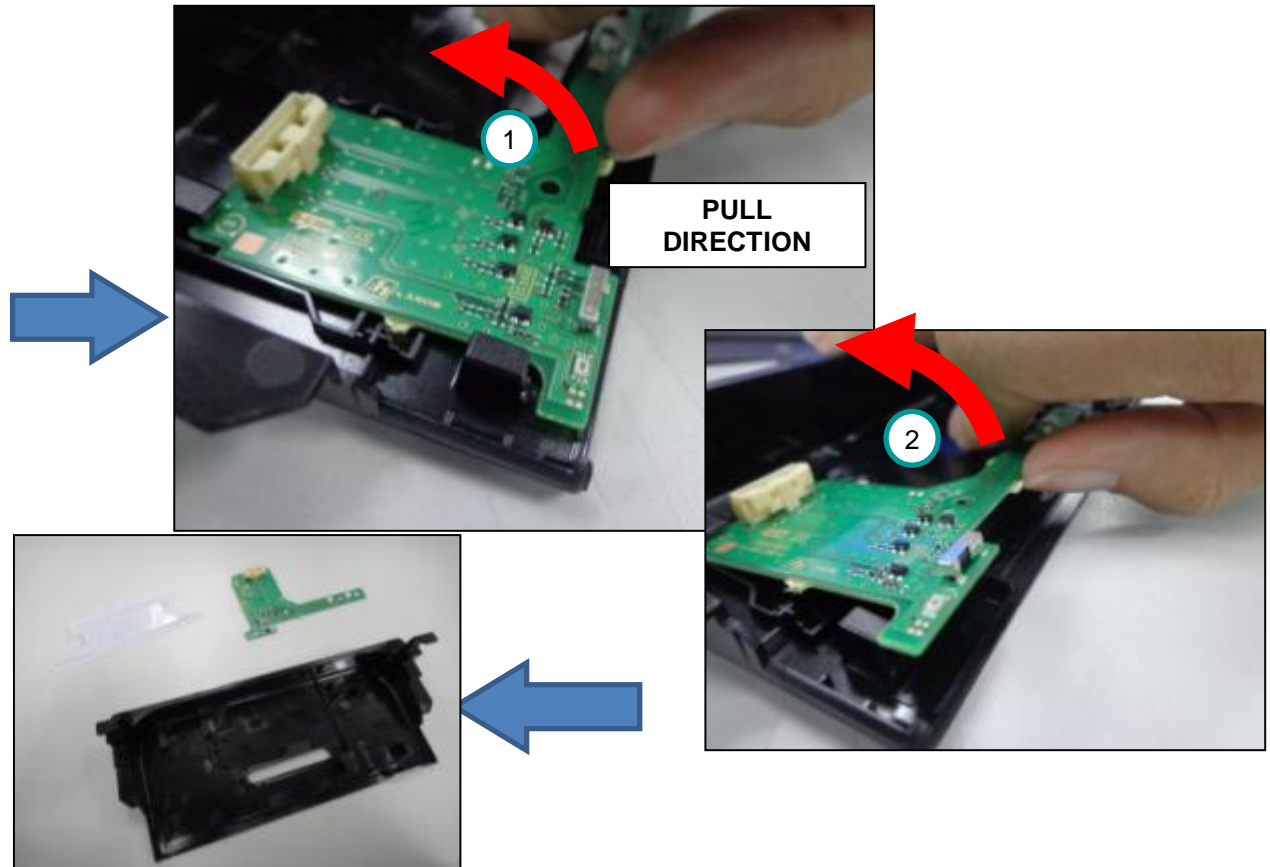
Step 3-3 : Take out HSC3L from CASE, BOTTOM



 : Location to pull

Remarks:

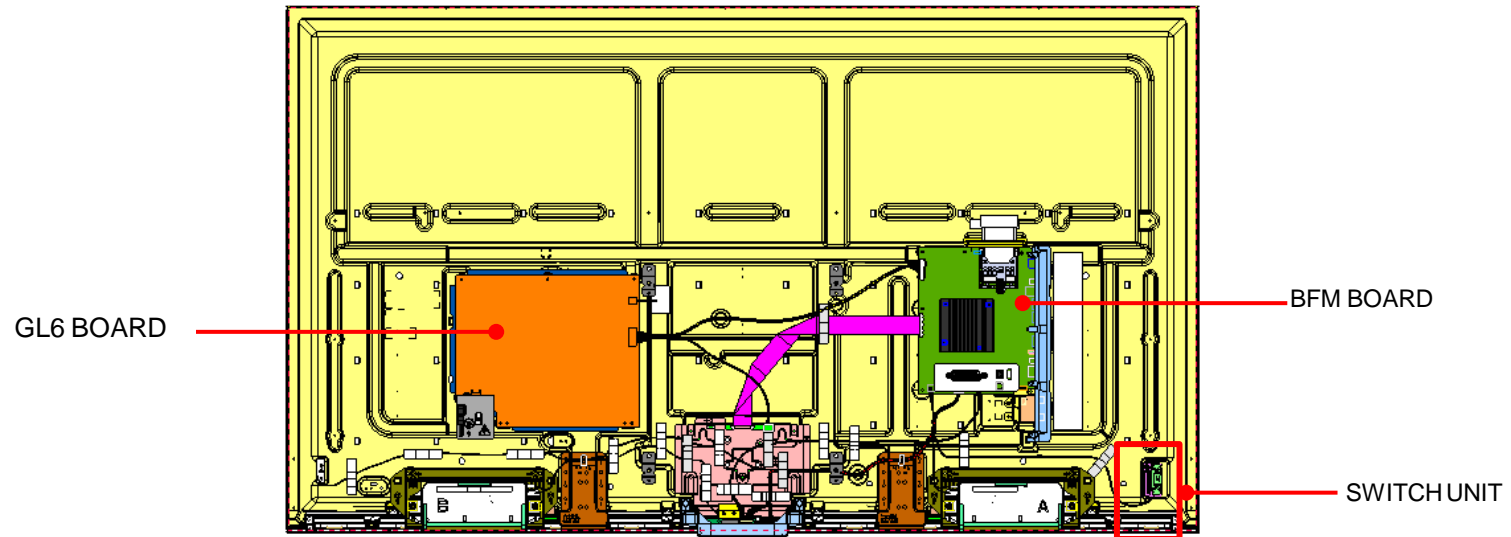
Do not pull on any components on HSC PWB!



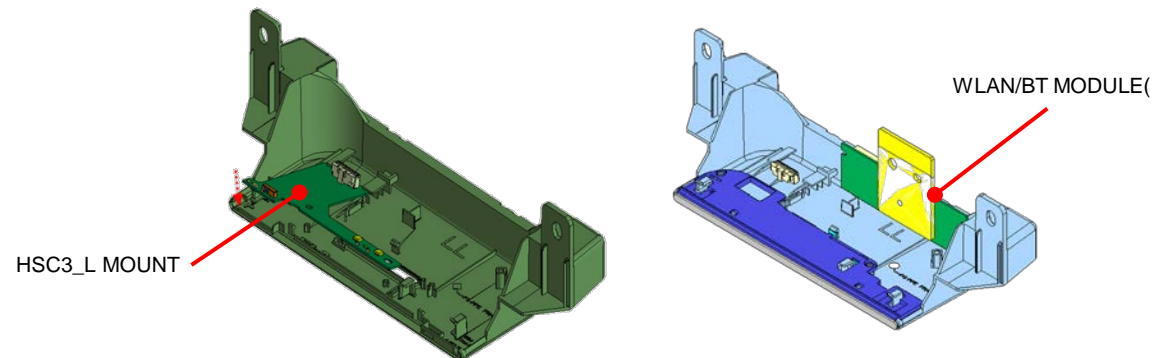
SECTION 2 DIAGRAMS

2-1. BOARD LOCATION

2-1-1. 65"



<SMART CORE BLOCK >



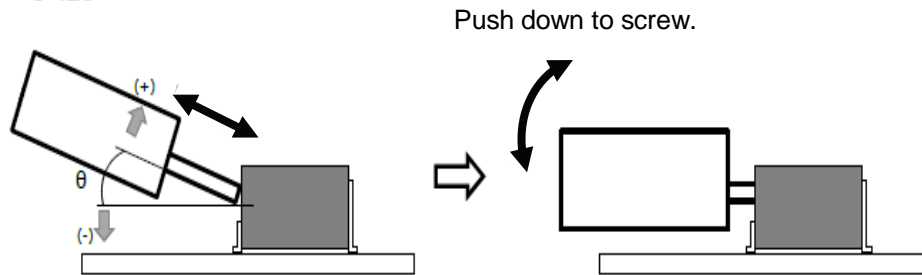
2-2. Wire Dressing

a. Assemble and Disassemble Tuner Module

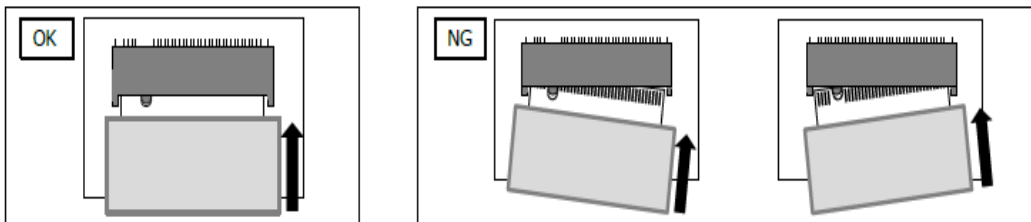
Tuner Module treatment way

1. The insertion & extraction angle of the module is permitted to specified degree for connector

$$\theta = 20^\circ$$



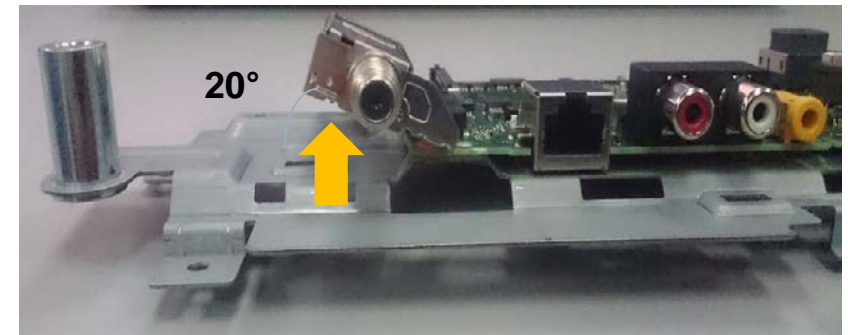
- ② Please insert or extract the module straightly toward the connector. Do NOT insert or extract the module with an angle.



For removing Tuner Module,

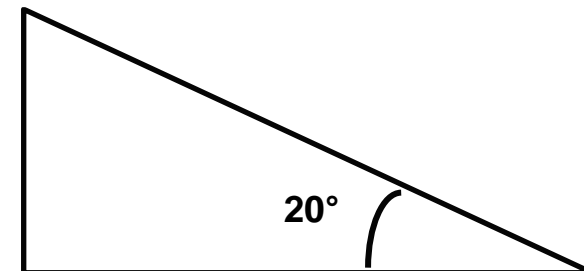
After un screwed, Automatically the Module will float to correct degree.

So please extract it with keeping this degree.



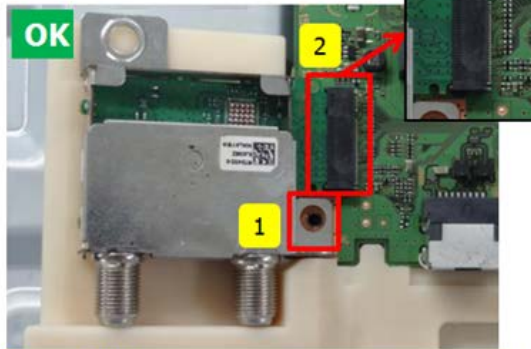
Reference paper for 20 degree

(If need please use for fit by cutting this paper)



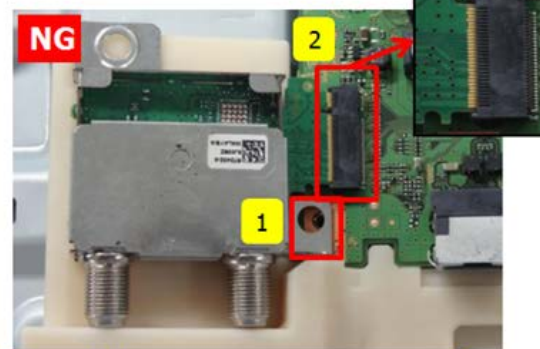
2-2. Wire Dressing Tuner Module

CAUTION:



Tuner fully insert.

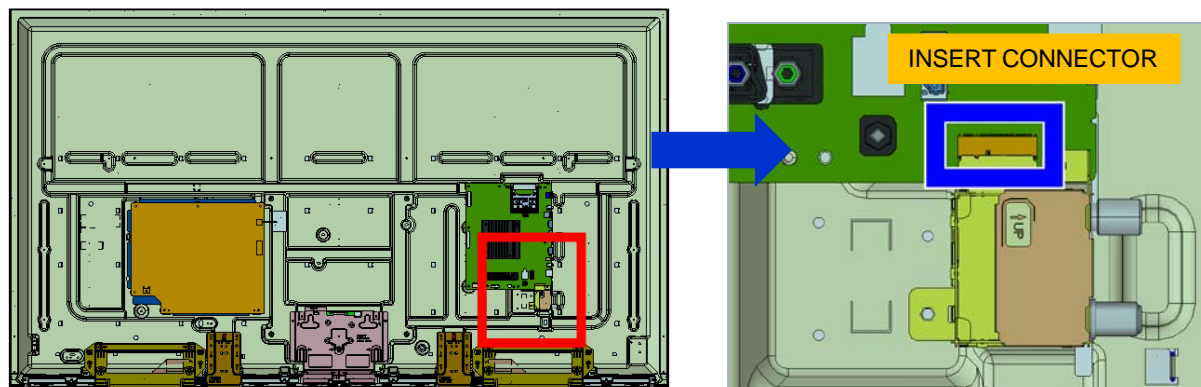
1. Main board & tuner screw hole overlapped completely.
2. Terminal cannot be seen.



Tuner half insert.

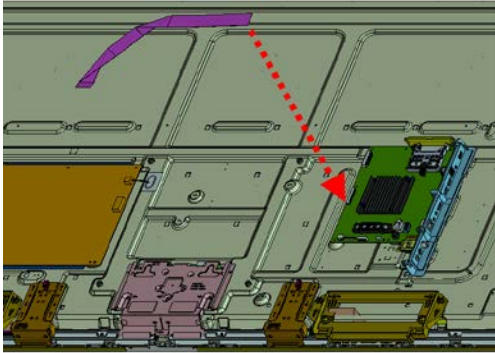
1. Main board & tuner screw hole misaligned.
2. Terminal can be seen.

* This is to ensure solder-less tuner is fully inserted

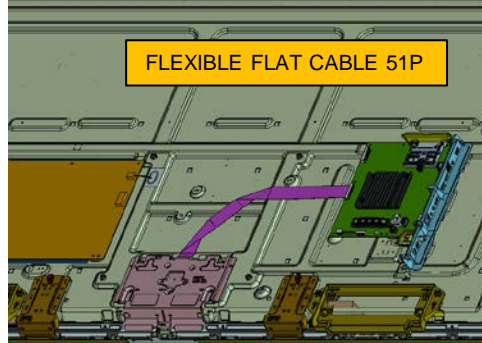


2-2. Wire Dressing FLEXIBLE FLAT CABLE 51P

FLEXIBLE FLAT CABLE 51P



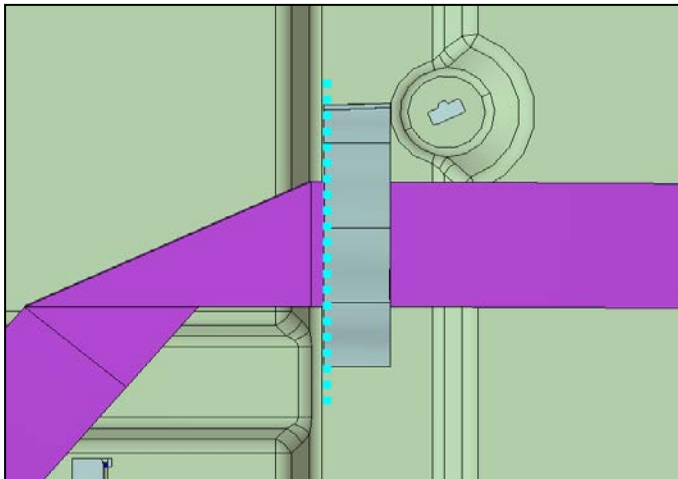
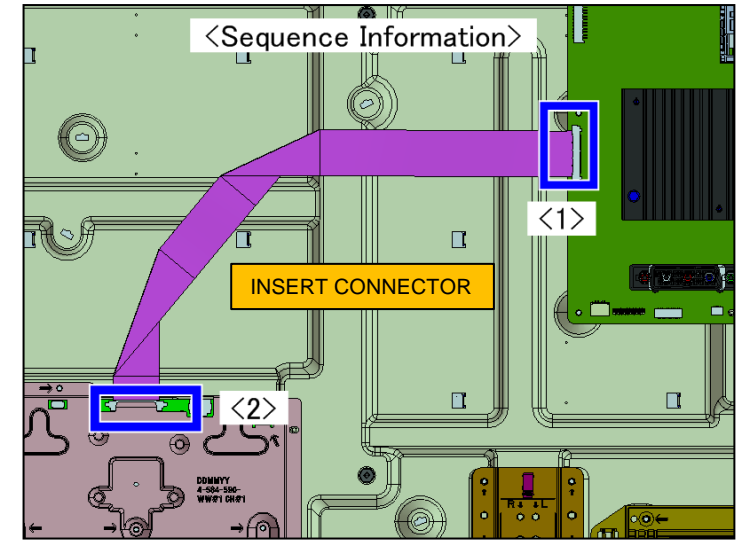
FLEXIBLE FLAT CABLE 51P



<Sequence Information>

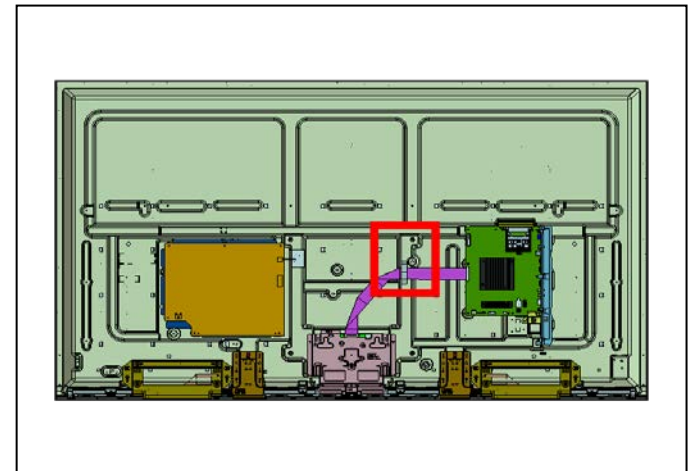
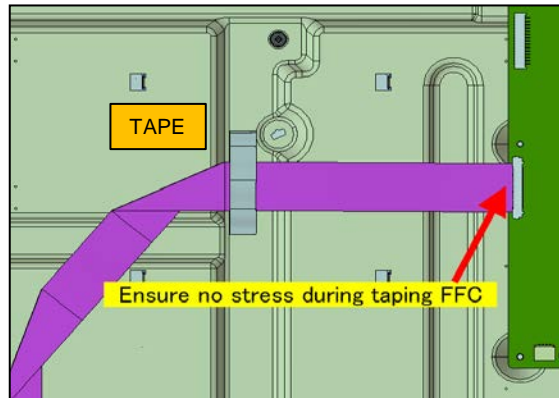
<1>

INSERT CONNECTOR



TAPE

Ensure no stress during taping FFC



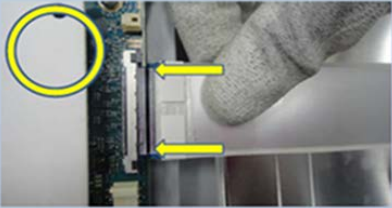
2-2. Wire Dressing

FLEXIBLE FLAT CABLE 51P (INSERTION)

INSERT CONNECTOR INFORMATION 1

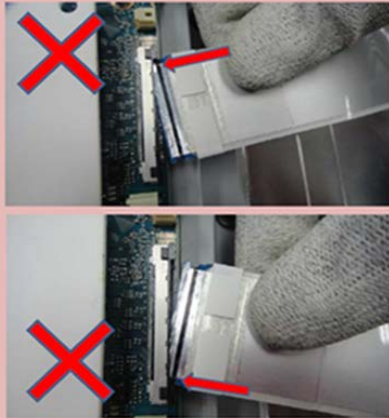
OK operation

→ Insert FFC in **straight** direction/condition into the connector and plunge it to the depths.



NG operation

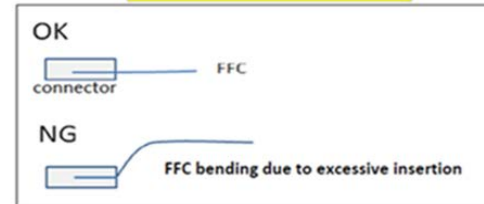
→ DO NOT **slant** the FFC during insertion.



INSERT CONNECTOR INFORMATION 2

- 1) Don't apply excess insertion force to avoid bending of LVDS FFC.
- 2) Replace FFC even once FFC bended over 30 degree.

Cross-section view of connector



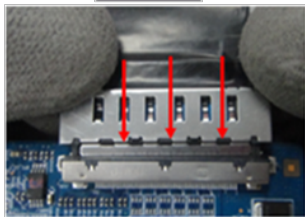
Don't apply excessive force during insertion to avoid bending of LVDS



INSERT CONNECTOR INFORMATION 3

Caution for FFC with connector installation at panel side

OK



NG



ABNORMAL HANDLING AT PANEL SIDE WILL CAUSE CONTACT SHIFTED AS PICTURE BELOW



INSERT CONNECTOR INFORMATION 4

Caution: For Straight FFC Side Insertion (FFC insert in flat condition) and Wedge design

OK



1) Hold FFC by using the FFC holder



2) Insert FFC to main board straight and as parallel to main board (Allowance: Within 30 Degree)

NG



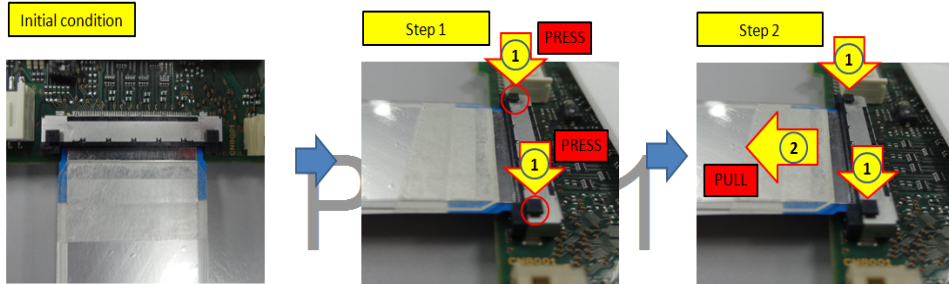
1) FFC conn flip / slanting. (> 30 degree)

* Note : FFC as in image is only for reference purpose. Actual FFC outlook may vary by each vendor

2-2. Wire Dressing

FLEXIBLE FLAT CABLE 51P (WITHDRAWAL)

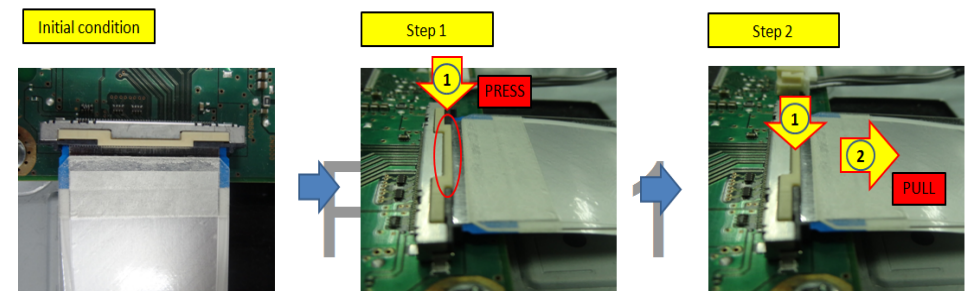
< Application > Withdrawal of FFC using Non-ZIF (IPEX connector)
 < Connector location > Main board side
 < Method > See as follows
 < Caution > See as follows



- 1 Press the release lock button downward at same time (highlighted in red).
- 2 Pull FFC in straight direction while pressing both release lock button at the same time.

Note: FFC as in image is only for reference purpose. Actual FFC outlook may vary by each vendor.

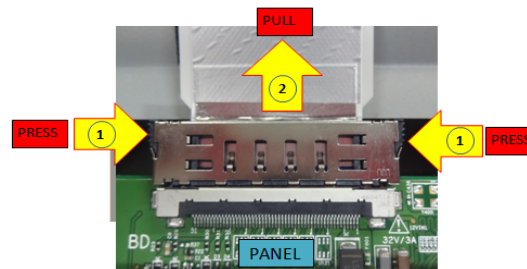
< Application > Withdrawal of FFC using Non-ZIF (Yamaichi connector)
 < Connector location > Main board side
 < Method > See as follows
 < Caution > See as follows



- 1 Press the release lock button downward (highlighted in red).
- 2 Pull FFC in straight direction while pressing release lock button at the same time.

Note: FFC as in image is only for reference purpose. Actual FFC outlook may vary by each vendor.

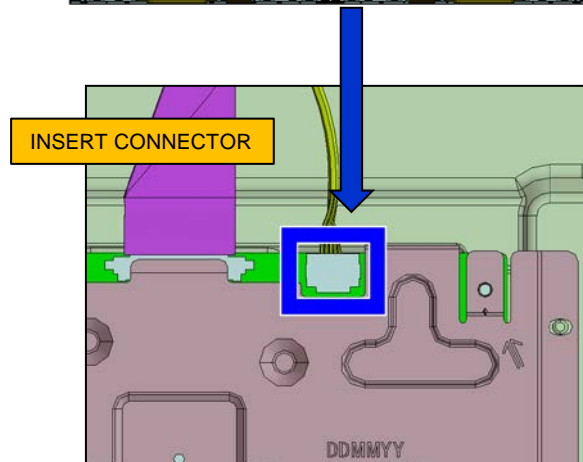
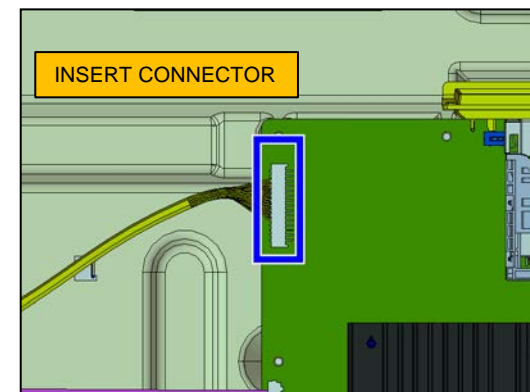
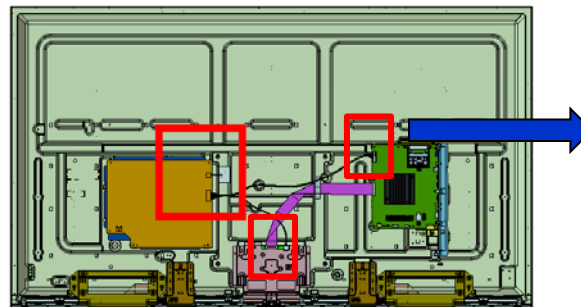
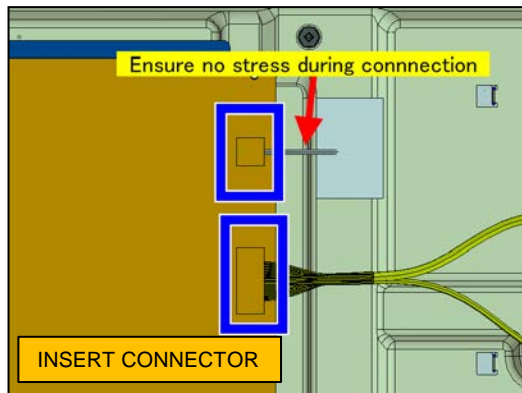
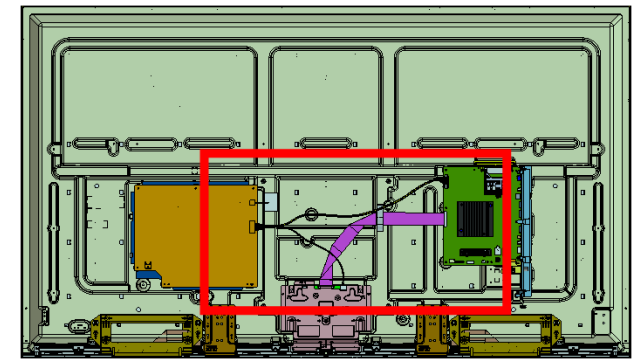
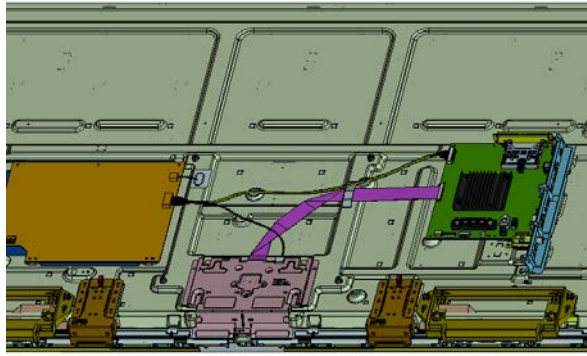
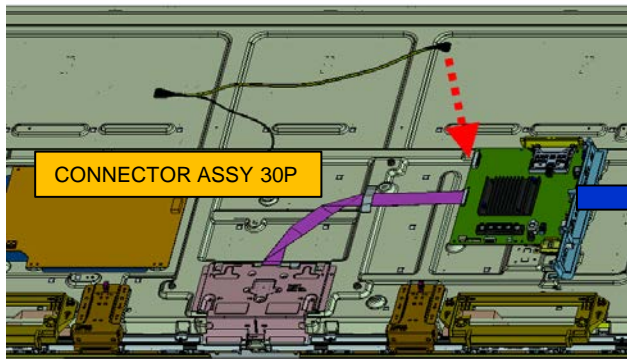
< Application > Withdrawal of 51P FFC using plug type from panel side
 Connector location > Panel side
 < Method > See as follows
 < Caution > See as follows



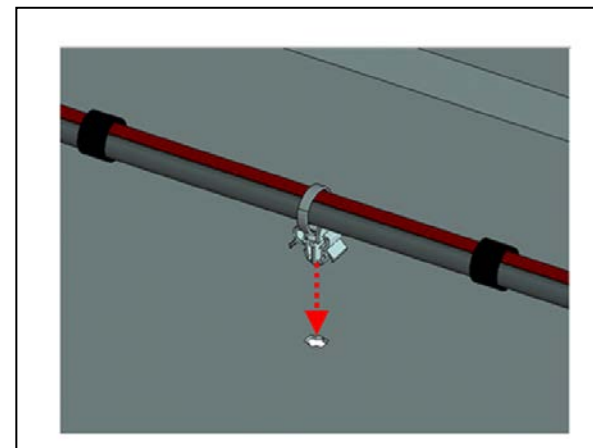
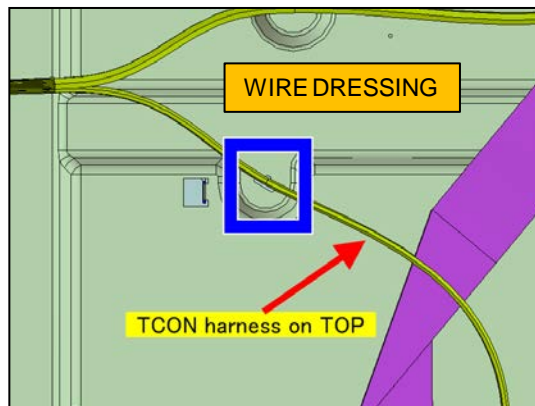
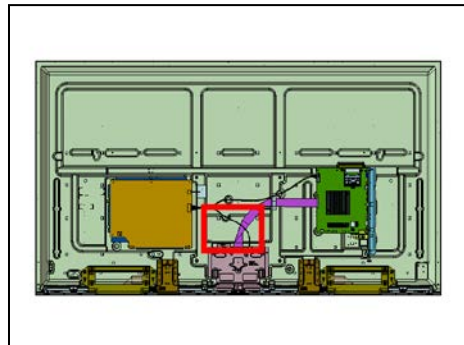
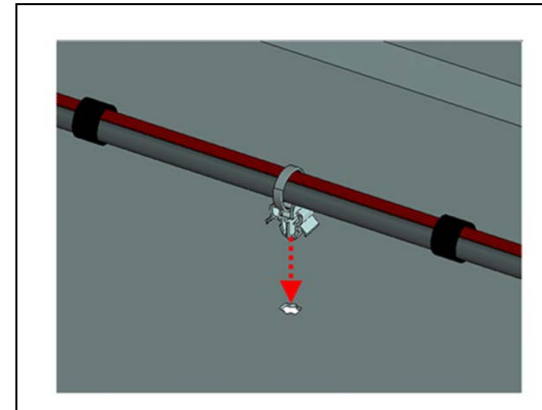
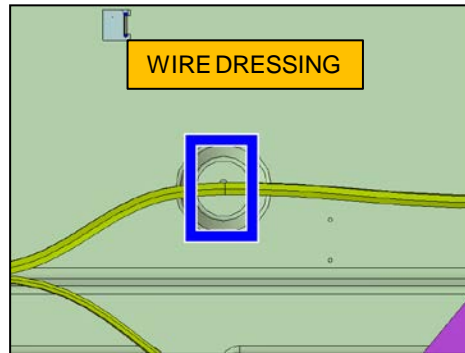
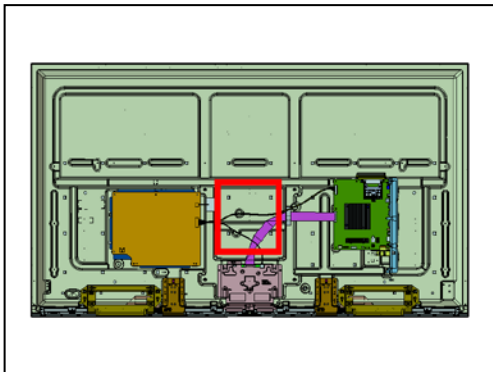
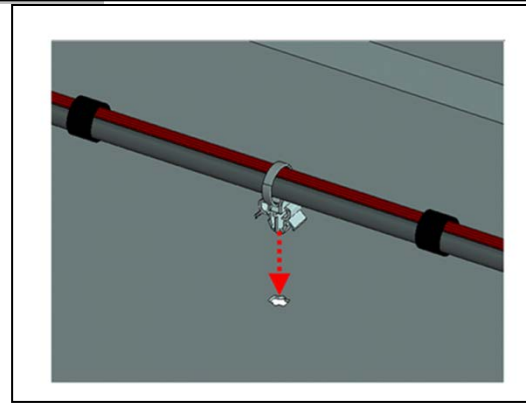
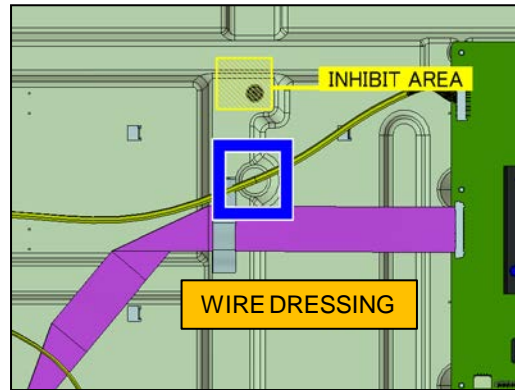
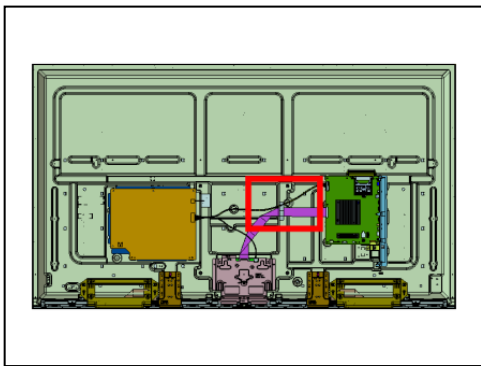
- 1 Please press on both lock release button
- 2 Pull FFC in straight direction while holding both lock release button at the same time

Note: FFC as in image is only for reference purpose. Actual FFC outlook may vary by each vendor.

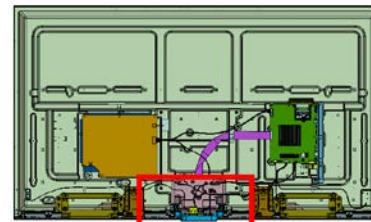
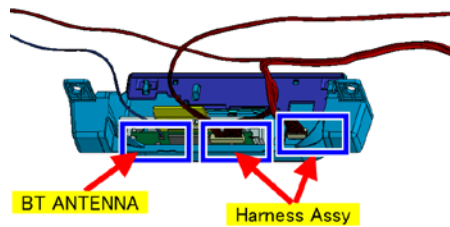
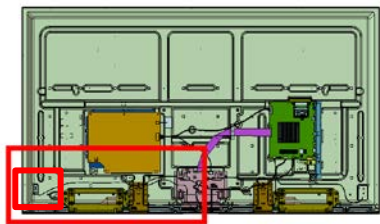
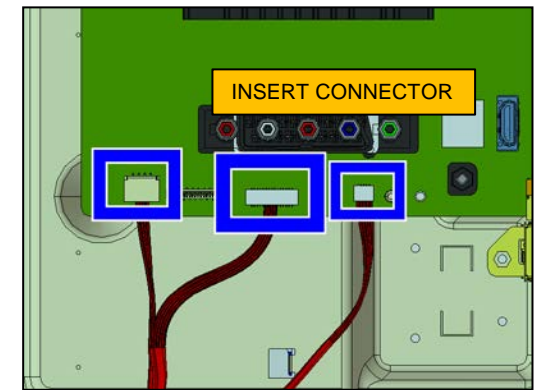
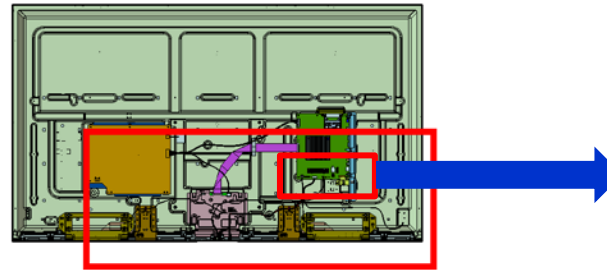
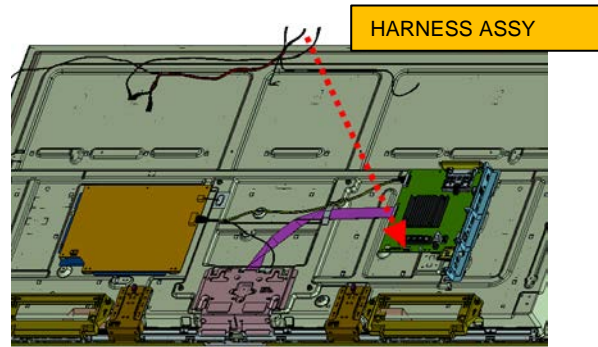
2-2. Wire Dressing CONNECTOR ASSY 30P



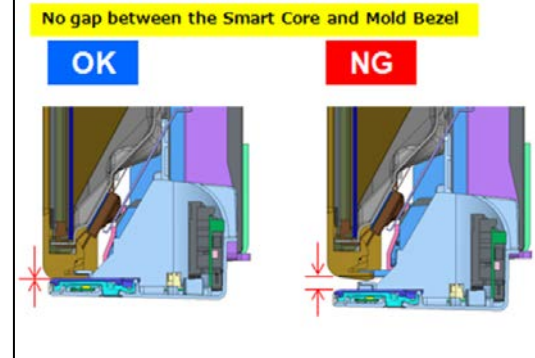
2-2. Wire Dressing
CONNECTOR ASSY 30P



2-2. Wire Dressing HARNESS ASSY

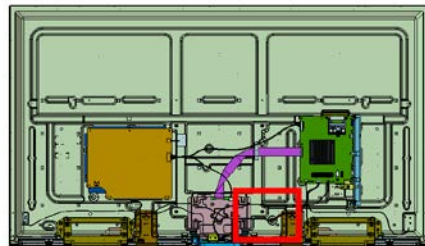


INSERT CONNECTOR

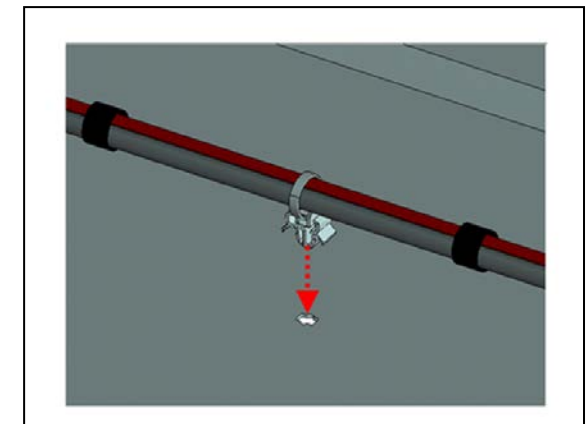
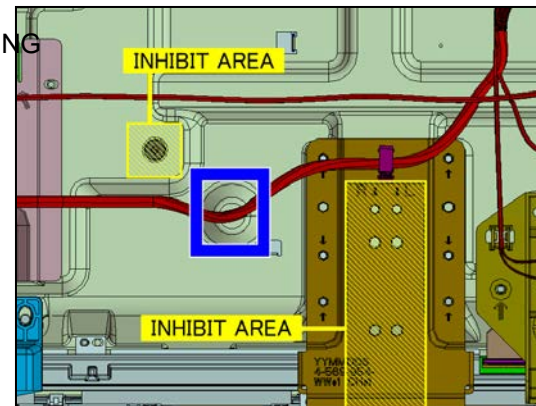


BT ANTENNA

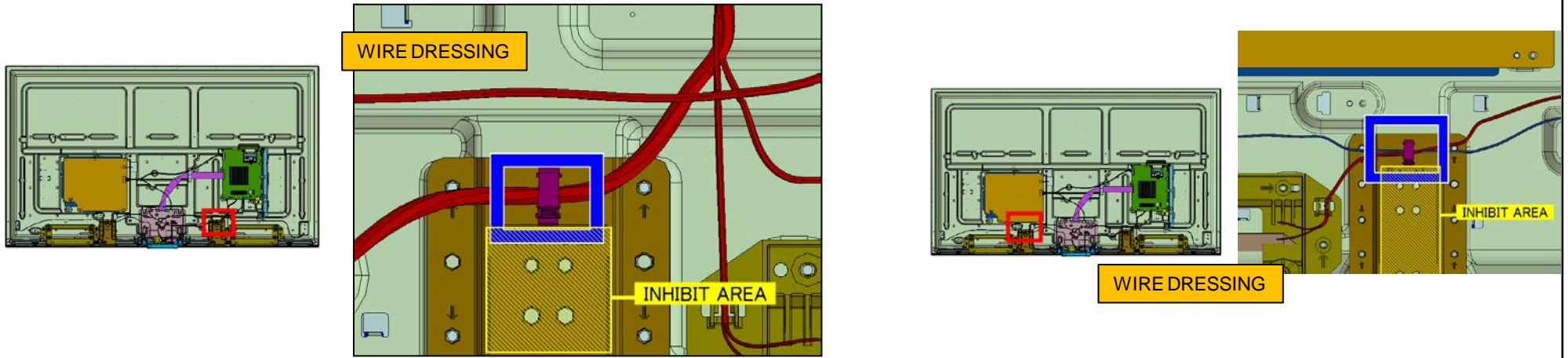
SMART CORE ASSY



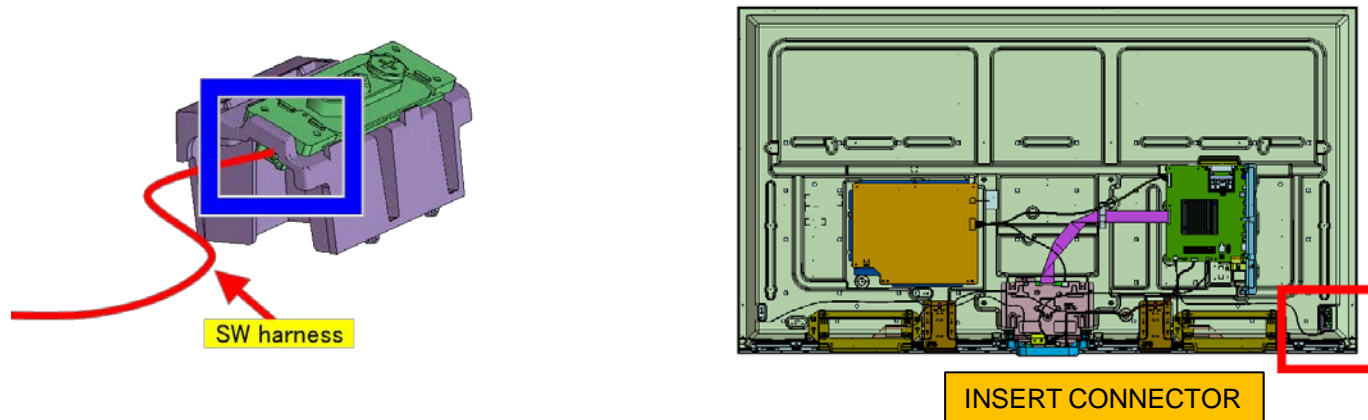
WIRE DRESSING



2-2. Wire Dressing
HARNESS ASSY



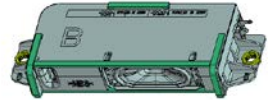
SWITCH UNIT



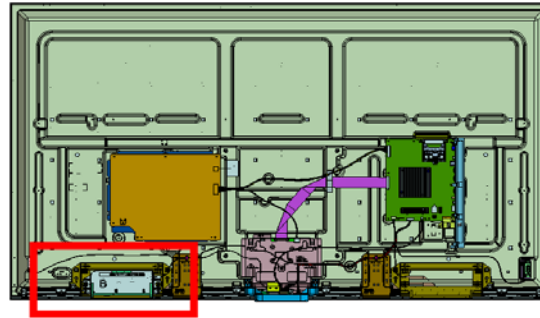
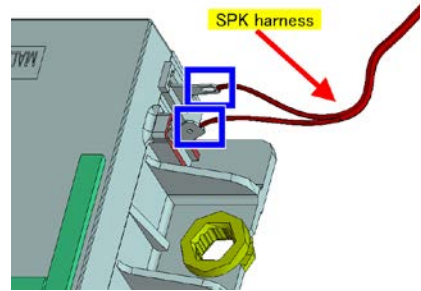
2-2. Wire Dressing

SPEAKER

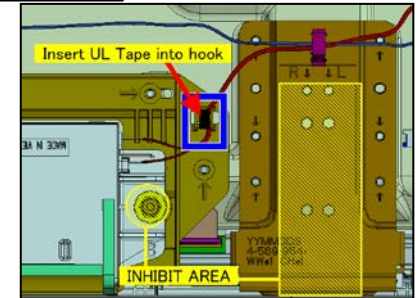
SPEAKER BOX ASSY R



INSERT CONNECTOR



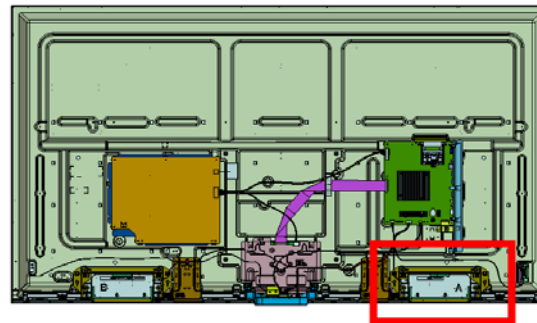
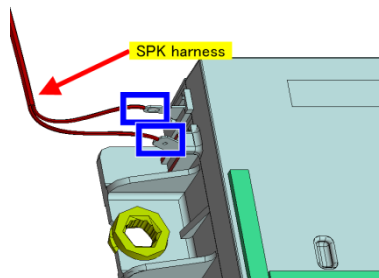
WIRE DRESSING



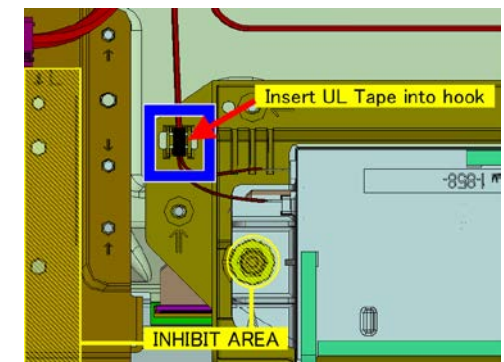
SPEAKER BOX ASSY L



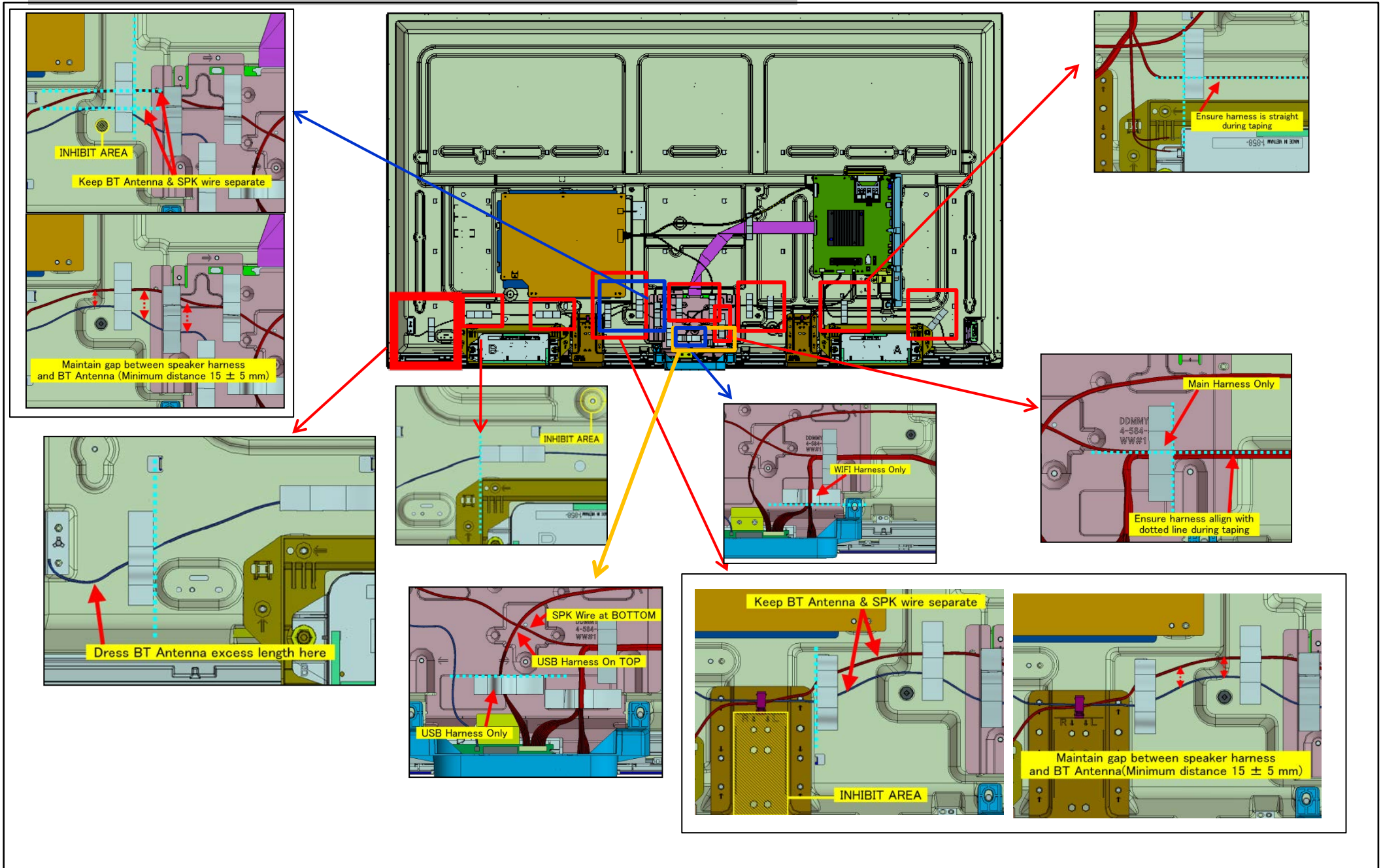
INSERT CONNECTOR



WIRE DRESSING



2-2. Wire Dressing TAPE



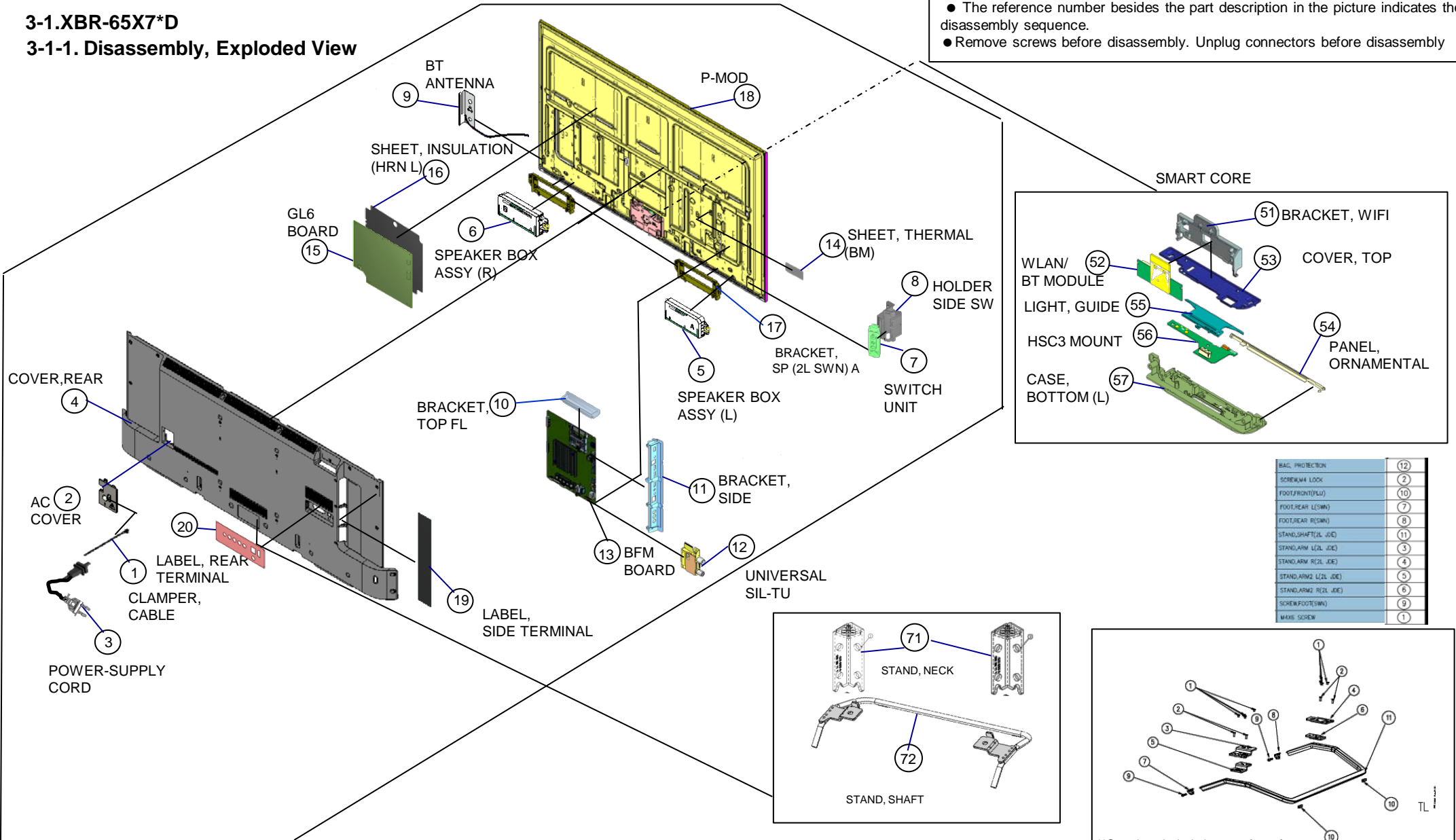
SECTION 3 DISASSEMBLY, EXPLODED VIEWS AND OTHER PARTS

- Place the TV set facing downwards on a stable, level surface before disassembly and assembly of parts.
- and shaded parts are critical for safety. Replace only with part number specified.
- Parts contain confidential information. Strictly follow the instruction whenever the components are repaired and/or replaced.

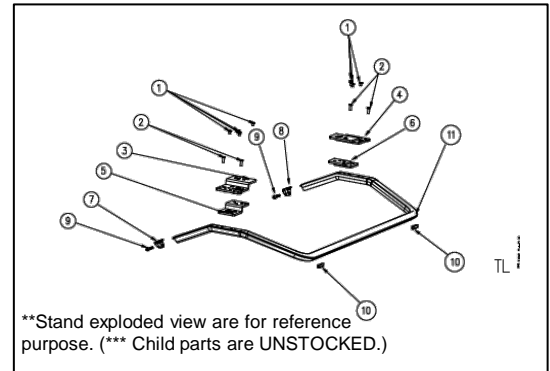
- (*) Parts are not stocked since they are seldom required for routine service. Some delays should be anticipated when ordering these components.
- Picture provided in this section might have slight difference from the actual sets.
- Lines that indicate parts are shown in blue in the illustration.
- The reference number besides the part description in the picture indicates the disassembly sequence.
- Remove screws before disassembly. Unplug connectors before disassembly

3-1.XBR-65X7*D

3-1-1. Disassembly, Exploded View



BAG, PROTECTION	(12)
SCREW, LOCK	(2)
FOOT, FRONT (PLUG)	(10)
FOOT, REAR (LOW)	(7)
FOOT, REAR (HIGH)	(8)
STAND, SHAFT (2L JOE)	(11)
STAND, ARM (L2L JOE)	(3)
STAND, ARM (R2L JOE)	(4)
STAND, ARM2 (L2L JOE)	(5)
STAND, ARM2 (R2L JOE)	(6)
SCREW, FOOT (SWN)	(9)
MAXI SCREW	(1)

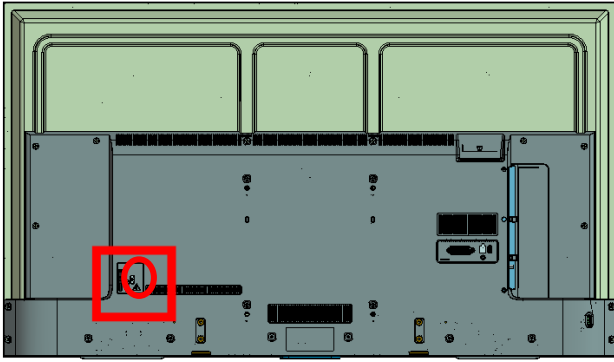


3-1.XBR-65X7*D

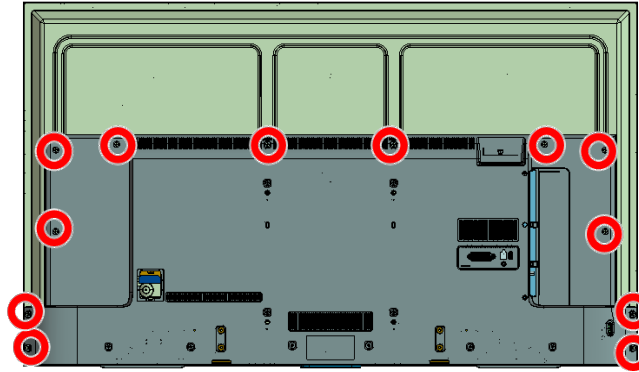
3-1-1. Disassembly, Exploded View

REF. NO.	DESCRIPTION	PART NO.	XBR-65X750D		XBR-65X755D		XBR-65X757D
			DESTINATION		DESTINATION		DESTINATION
			LA1	UC2	LA8	CR1	CO1
1	CLAMPER, CABLE	4-262-708-04	•	•	•	•	•
2	AC COVER	4-299-531-01	•	•	•	•	•
3	▲ POWER-SUPPLY CORD (WITH CONN.)	1-849-274-11	•	•	n/a	n/a	•
3	▲ POWER-SUPPLY CORD (WITH CONN.)	1-839-691-12	n/a	n/a	•	•	n/a
4	COVER, REAR (2L JDE) A	4-591-836-11	•	•	•	•	n/a
4	COVER, REAR (2L JDE) A	4-591-836-01	n/a	n/a	n/a	n/a	•
5	SPEAKER BOX ASSY (L)	1-858-963-51	•	•	•	•	•
6	SPEAKER BOX ASSY (R)	1-858-963-61	•	•	•	•	•
7	SWITCH UNIT (3M-P)	1-474-647-11	•	•	•	•	•
8	HOLDER SIDE SW(JDE)	4-582-345-01	•	•	•	•	•
9	BT ANTENNA	1-754-949-11	•	•	•	•	•
10	BRACKET, TOP FL (MOLD)	4-546-441-11	n/a	n/a	n/a	n/a	•
11	BRACKET, SIDE (JDE)	4-579-724-11	•	•	n/a	n/a	n/a
11	BRACKET, SIDE (JDE)	4-579-724-21	n/a	n/a	•	•	•
12	UNIVERSAL SIL-TU SUT-DB243ZP	8-594-307-00	n/a	n/a	n/a	n/a	•
12	UNIVERSAL SIL-TU SUT-RA243ZP	8-594-302-00	•	•	n/a	n/a	n/a
12	UNIVERSAL SIL-TU SUT-RT243ZP	8-594-308-00	n/a	n/a	•	•	n/a
13	COMPL SVC BFM_CO_CI_G	A-2094-461-A	n/a	n/a	n/a	n/a	•
13	COMPL SVC BFM_LA_G	A-2094-462-A	n/a	n/a	•	n/a	n/a
13	COMPL SVC BFM_LAAR_G_GINGA	A-2144-168-A	n/a	n/a	n/a	•	n/a
13	COMPL SVC BFM_MX_I_G	A-2094-466-A	•	n/a	n/a	n/a	n/a
13	COMPL SVC BFM_UC_I_S_G	A-2094-463-A	n/a	•	n/a	n/a	n/a
14	SHEET, THERMAL(BM)	4-549-186-01	•	•	•	•	•
15	▲ GL6(CH)-STATIC CONVERTER(TV)	1-474-633-21	•	•	•	•	•
16	SHEET, INSULATION(HRN L)	4-565-059-11	•	•	•	•	•
17	BRACKET, SP (2L SWN) A	4-570-849-02	•	•	•	•	•
18	P-MOD (YD6S650CNG04B)	A-2129-776-A	•	•	•	•	•
19	LABEL, SIDE TERMINAL(PDT)	4-581-504-01	•	•	n/a	n/a	n/a
19	LABEL, SIDE TERMINAL(PDT)	4-581-504-51	n/a	n/a	•	•	•
19	LABEL, REAR TERMINAL (PDT)	4-585-154-01	•	•	n/a	n/a	n/a
20	LABEL, REAR TERMINAL (PDT)	4-585-155-01	•	•	•	•	•
	<SMART CORE>						
51	BRACKET, WIFI	4-547-397-02	•	•	•	•	•
52	WLAN/BT MODULE(11AC)	1-458-912-11	•	•	•	•	•
53	COVER, TOP	4-547-395-01	•	•	•	•	•
54	PANEL, ORNAMENT	4-547-389-01	•	•	•	•	•
55	LIGHT, GUIDE	4-547-390-01	•	•	•	•	•
56	HSC3_L MOUNT	A-2066-086-A	•	•	•	•	•
57	CASE, BOTTOM (LL)	4-588-915-01	•	•	•	•	•
	<STAND>						
71	STAND, NECK ASSY (2L JDE)	4-589-101-01	•	•	•	•	•
72	STAND, SHAFT (2L JDE) A	4-589-104-01	•	•	•	•	•

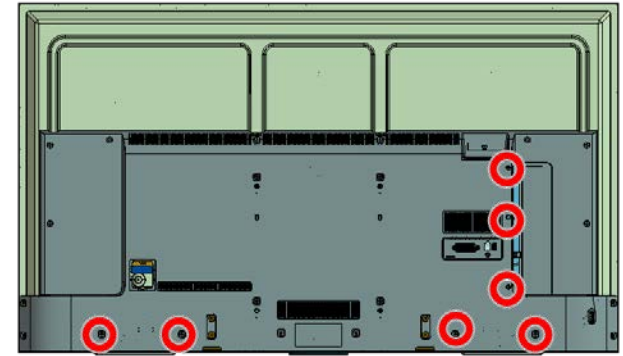
3-2.XBR-65X7*D
 3-2-2. Screws



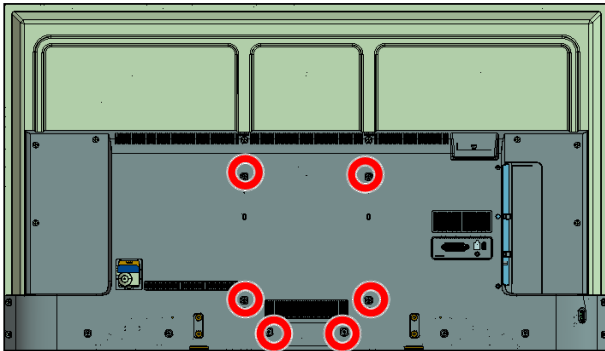
Description	Part No
SCREW, +PSW M4X10	4-159-298-01



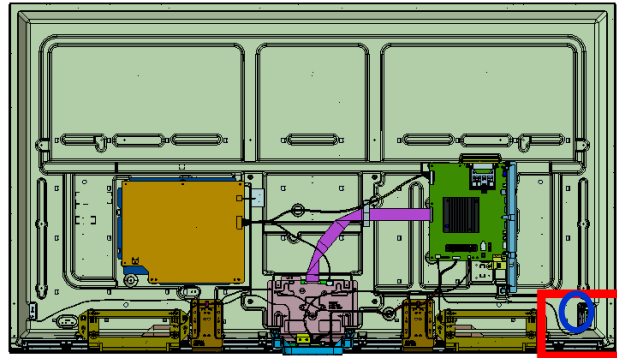
Description	Part No
SCREW_M3x3.0 STEP	4-579-926-01



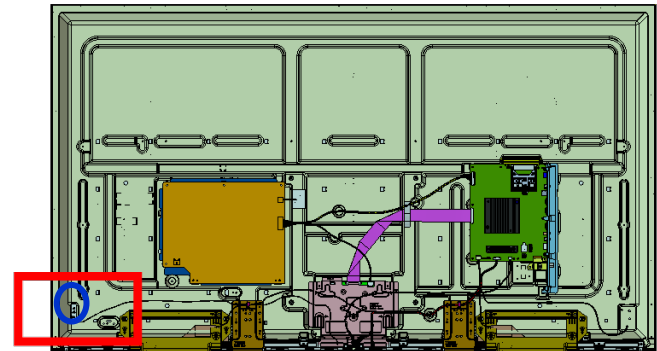
Description	Part No
SCREW +BVTP 4X12 TYPE2 IT-3	2-580-639-01



Description	Part No
SCREW, +PSW M4x10	4-159-298-01



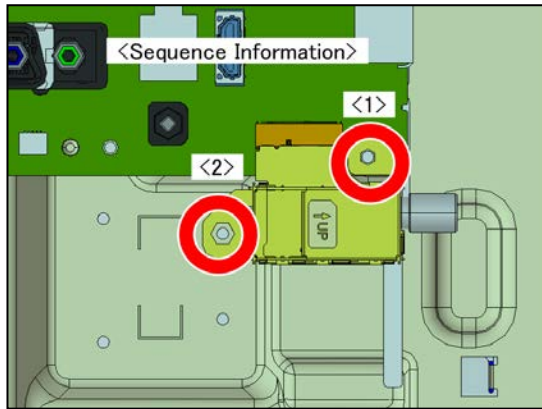
Description	Part No
SCREW_M3x3.0 STEP	4-579-926-01



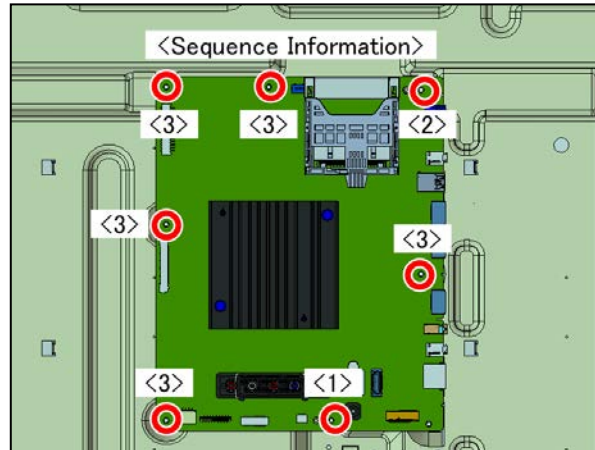
Description	Part No
SCREW, +PSW M3X6	4-472-518-11

3-2.XBR-65X7*D

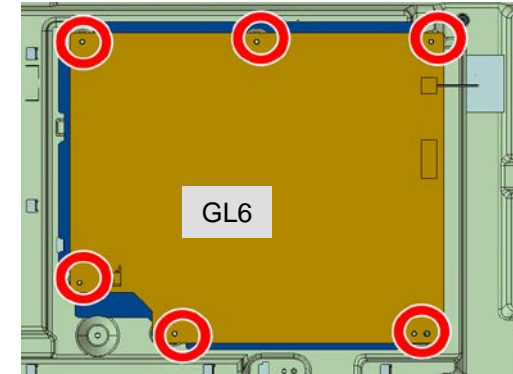
3-2-2. Screws



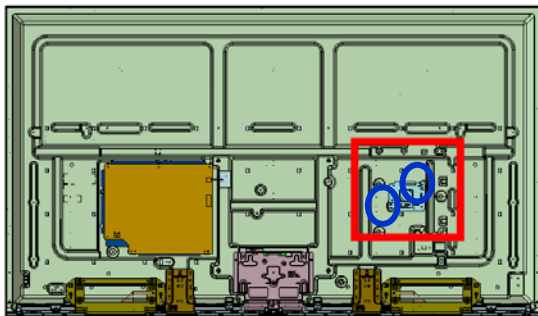
Description	Part No
SCREW, +PSW M3X6	4-472-518-11



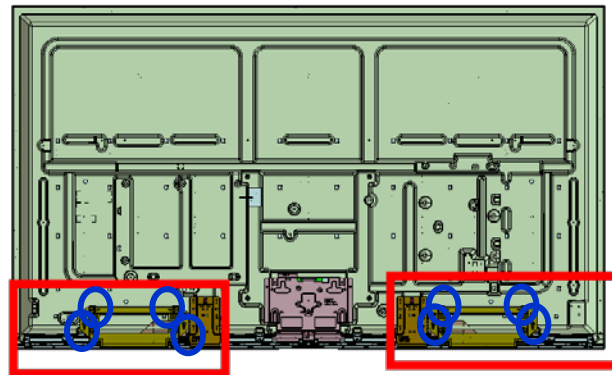
Description	Part No
SCREW, +PSW M3X6	4-472-518-11



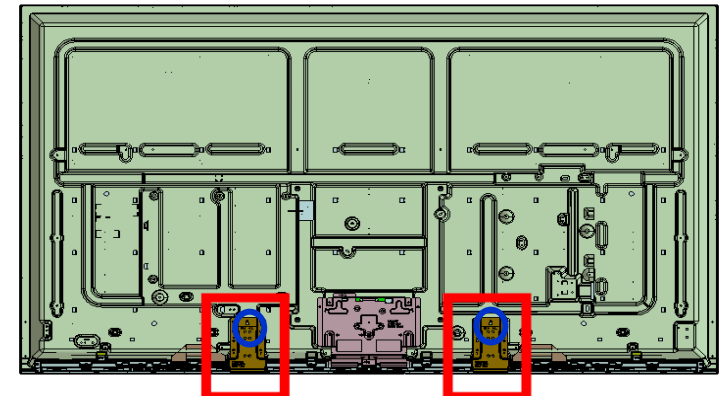
Description	Part No
SCREW, +PSW M3X6 W12	4-256-393-12



Description	Part No
SCREW, +PSW M3X6	4-472-518-11

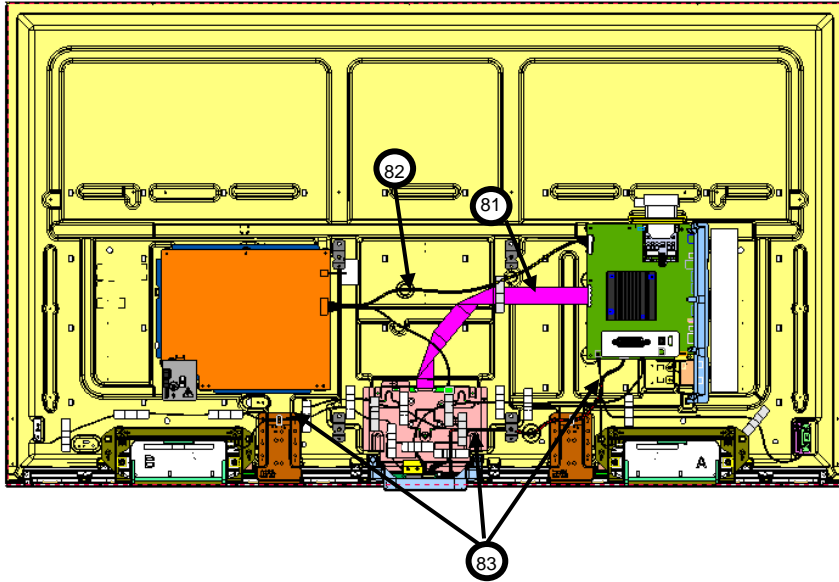


Description	Part No
SCREW, +PSW M3x8	2-580-593-01



Description	Part No
PULLEY, STAND (HWI)	4-534-964-01

3-2.XBR-65X7*D
3-2-3. Connectors



FOR ALL DESTINATION

REF. NO.	DESCRIPTION	PART NO.	REMARKS
81	FLEXIBLE FLAT CABLE 51P	1-849-469-11	CN3800(BFM)-T-CON(1)
82	CONNECTOR ASSY 30P	1-910-805-77	CN400(BFM)-CN6401(GL6)-J110(T-CON)(1)
83	HARNESS ASSY	1-910-805-76	CN1000(BFM)-CN1001(BFM)-CN203(SM)-CN001(HSC3_L)-WIFI/BT/CN3202(BFM)-SP(1)

3-2.XBR-65X7*D
3-2-4. Other Parts

DESCRIPTION	PART NO.	XBR-65X750D		XBR-65X755D		XBR-65X757D
		DESTINATION		DESTINATION		DESTINATION
		LA1	UC2	LA8	CR1	CO1
HEAT SINK(MUFF2 C)	* 4-584-547-01	•	•	•	•	•
HOLDER(HS MUF)	* 4-549-188-01	•	•	•	•	•
IR BLASTER CABLE	1-849-161-11	•	•	n/a	n/a	n/a
TAPE (3M 1350FB-1)15MMX66M BLK	7-600-031-97	•	•	•	•	•
TAPE (3M 1350FW-1)15MMX66M WHT	7-600-031-96	•	•	•	•	•
BAG, PROTECTION (1720X1200)	4-408-077-32	•	•	•	•	•
BAG, SCREW (2L SWN)	4-570-853-02	•	•	•	•	•
STOPPER (A)	3-674-673-22	•	•	•	•	•
PROPS CORNER(2L JDE)	4-585-890-01	•	•	•	•	•
PROTECTION BAG AL	4-596-397-11	•	•	•	•	•
RCA CONVERSION CABLE	* 1-848-803-12	•	•	•	•	•
REFERENCE GUIDE	* 4-584-996-11	•	•	n/a	n/a	n/a
REFERENCE GUIDE	* 4-586-781-31	•	•	n/a	n/a	n/a
REFERENCE GUIDE	* 4-584-997-31	n/a	n/a	•	n/a	•
REFERENCE GUIDE	* 4-585-012-31	n/a	n/a	n/a	•	n/a
REMOTE COMMANDER (RMT-TX200B)	1-493-160-11	n/a	n/a	•	•	•
REMOTE COMMANDER (RMT-TX200U)	1-493-159-11	•	•	n/a	n/a	n/a
SCREW, +PSW M5X12BAG, SCREW (2L SWN)	2-580-607-01	•	•	•	•	•

