

## HISTORY INFORMATION FOR THE FOLLOWING MANUAL:

# *SERVICE MANUAL (UNIQUE)*

---

GN2TR CHASSIS

Segment: QEL- AMERICA

<b>Version</b>	<b>Date</b>	<b>Subject</b>
1	06/2016	1 <sup>st</sup> Issue.
2	06/2016	Supp-1 : a) Part Information Addition (Pg 5) b) Part Information Change : Screw Part No & Connector (Pg 32 ~ 33, 38 ~40)
3	07/2016	a) Update Stand illustration ( pg 30 & 36 ) b) Update WLAN/BT MODULE(11AC) for CO1 ( pg 31 )

LCD TV  
**SONY**<sup>®</sup>

9-888-701-A3

For SM - Common , please refer :

9-888-701-0X

# *SERVICE MANUAL (UNIQUE)*

---

GN2TR CHASSIS

Segment: QEL- AMERICA

LCD TV

**SONY®**

# MODEL LIST

<u>MODEL</u>	<u>REMOTE</u>	<u>DESTINATION</u>
KD-49X7005D	RMT-TX200B	BR6
XBR-49X700D	RMT-TX200U	UC2, LA1
XBR-49X705D	RMT-TX200B	AR4, CR1, LA8, ECU
XBR-49X707D	RMT-TX200B	CO1
KD-55X7005D	RMT-TX200B	BR6
XBR-55X700D	RMT-TX200U	UC2, LA1
XBR-55X705D	RMT-TX200B	AR4, CR1, LA8, ECU
XBR-55X707D	RMT-TX200B	CO1

## TABLE OF CONTENTS

<i>Section Title</i>	<i>Page</i>
1. DISSASSEMBLY AND REMOVAL CAUTION.....	5
2. DIAGRAMS	
2-1. Circuit Board Location.....	13
2-2. Wire Dressing.....	14
3. DISASSEMBLY, EXPLODED VIEWS AND OTHER PARTS	
3-1. KD-49X7*D, XBR-49X7*D.....	30
3-2. KD-55X7*D, XBR-55X7*D.....	36

**Please refer Service Manual – Common for below information :**

- General Safety Notes
- Self Diagnostic Function
- Triage Chart
- Troubleshooting, Troubleshooting reference
- Adjustments
- Diagrams : Block Diagram , Connector Diagram

**Note: Pictures provided in all this section might have slight difference from the actual sets**

# SECTION 1

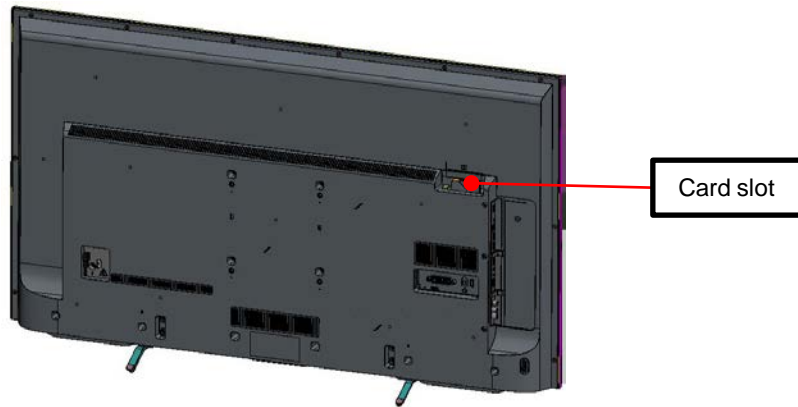
## DISSASSEMBLY AND REMOVAL CAUTION

**CAUTION:** During this disassemble, the TV set must lie above soft cushion / protection sheet. Use glove through out the process.

### 1-1. Rear Cover disassembly method

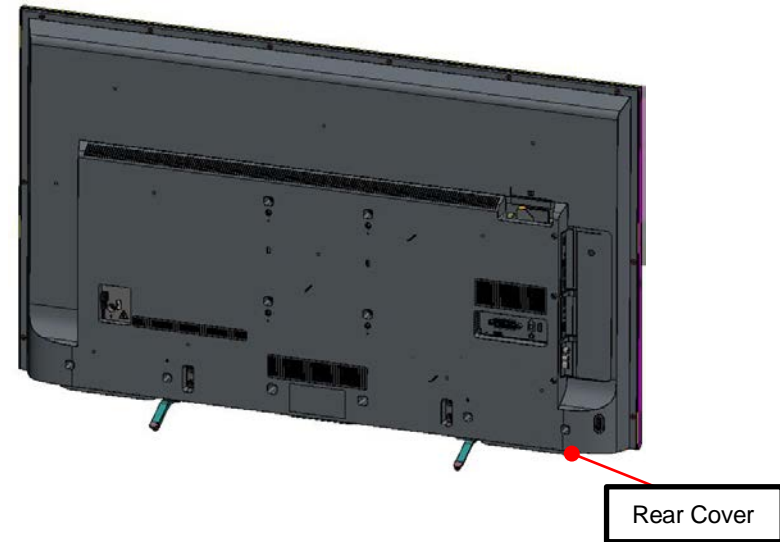
#### 1-1-1. Step 1

Only EU/COL/J models



1. Remove any Card from Card slot.  
(include Dummy Card and TOP FLAP FL)

#### 1-1-2. Step 2

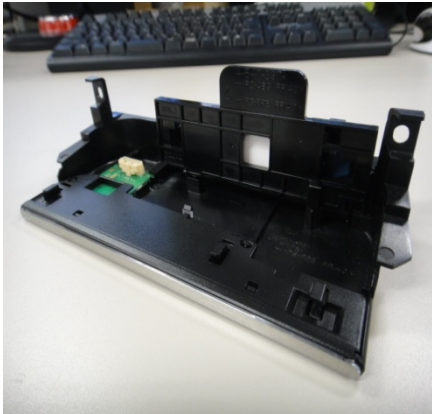


2. Remove the Screw of Rear Cover

-Detail of screw, please refer to screw type and quantity at page 32~33, 38~39.

## 1-2. Procedure To Disassemble Smart Core

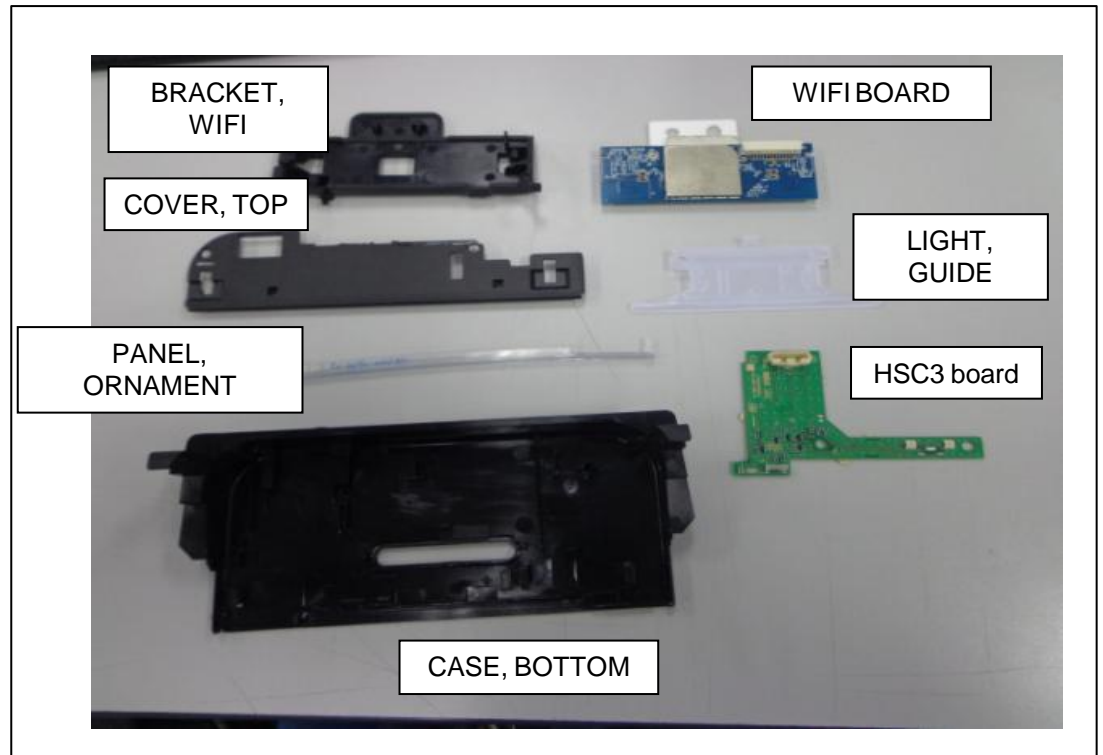
### 1-2-1. General



FRONT VIEW



BACK VIEW



BRACKET,  
WIFI

WIFI BOARD

COVER, TOP

LIGHT,  
GUIDE

PANEL,  
ORNAMENT

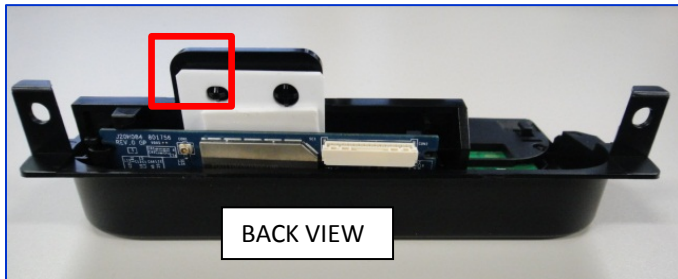
HSC3 board

CASE, BOTTOM

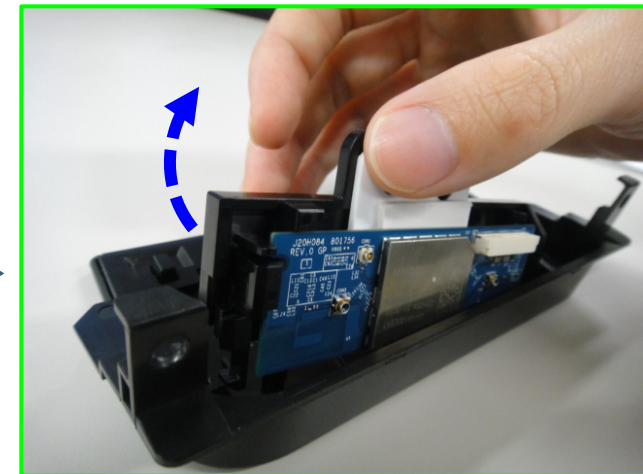
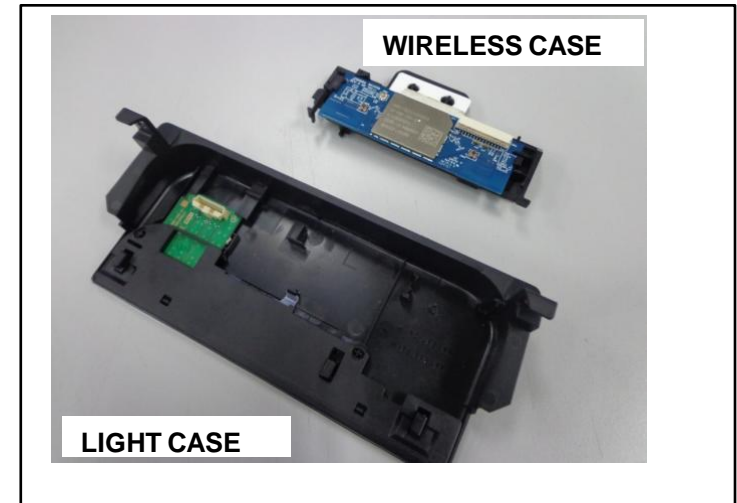
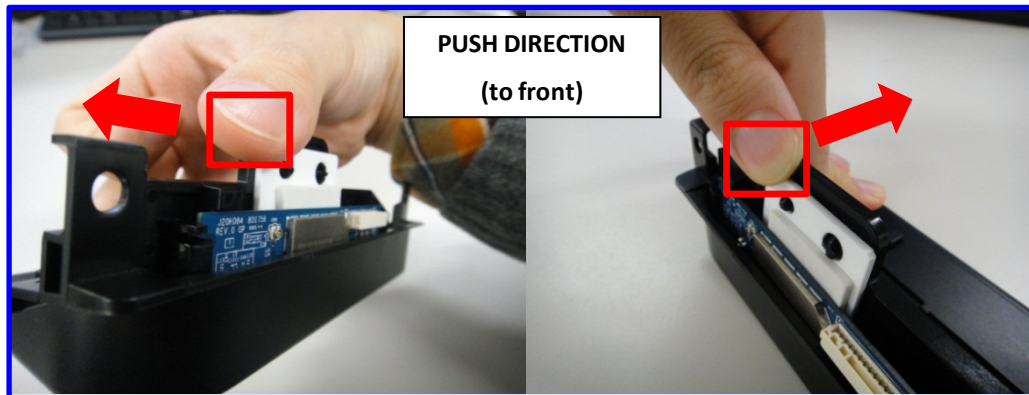
## 1-2. Procedure To Disassemble Smart Core

### 1-2-2. Smart Core Disassembly

Step 1 : Remove WIRELESS CASE by pushing the edge of Bracket Wi-Fi as shown.



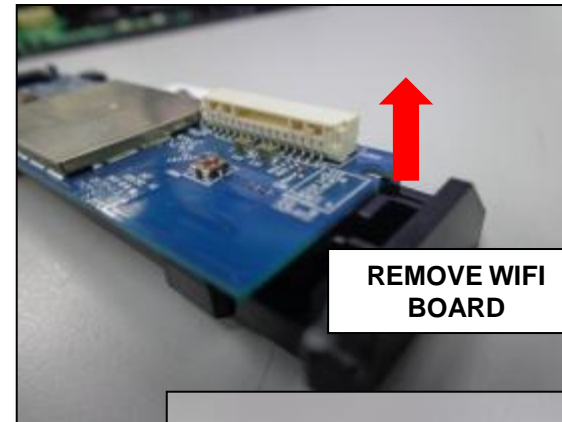
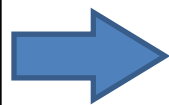
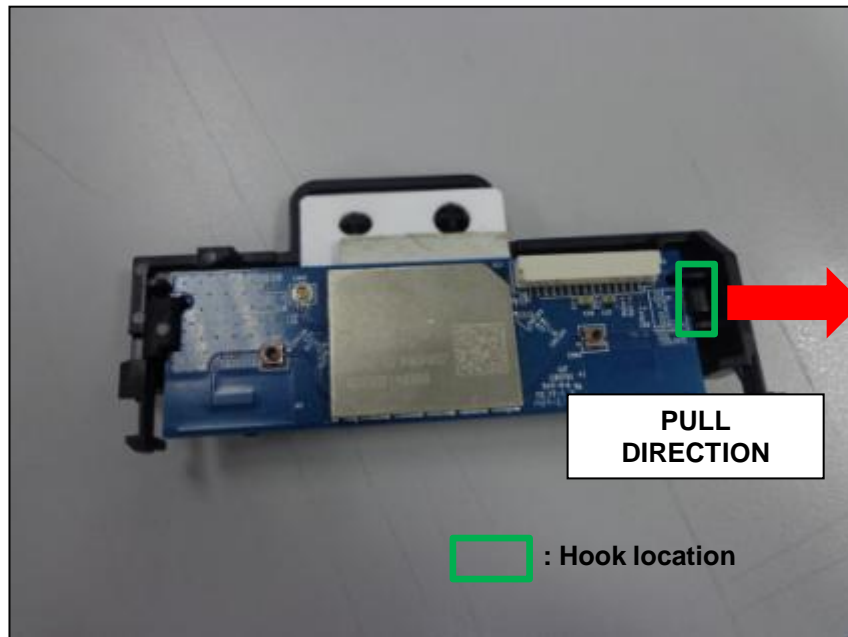
 : Location to push



1-2. Procedure To Disassemble Smart Core

1-2-3. Wireless Case Disassembly

i) Detach from hook (1 location)



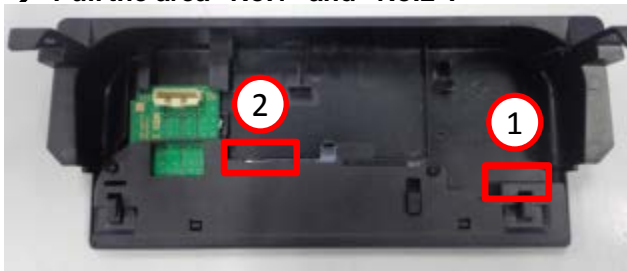
**1-2. Procedure To Disassemble Smart Core**


**1-2-4. Light Case Disassembly**

**a) Disassembly of "COVER, TOP"**

Step 1: Detach "Cover Top" as shown below.

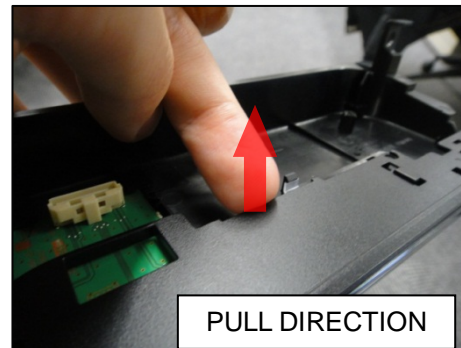
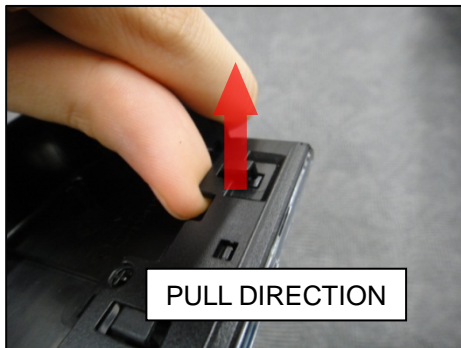
→ \*Pull the area "No.1" and "No.2".



 : Location to pull

*Take out hook at No.1 area*

*Take out hook at No.2 area*



*After pull No.1 area, pull the No.2 area.*

## 1-2. Procedure To Disassemble Smart Core

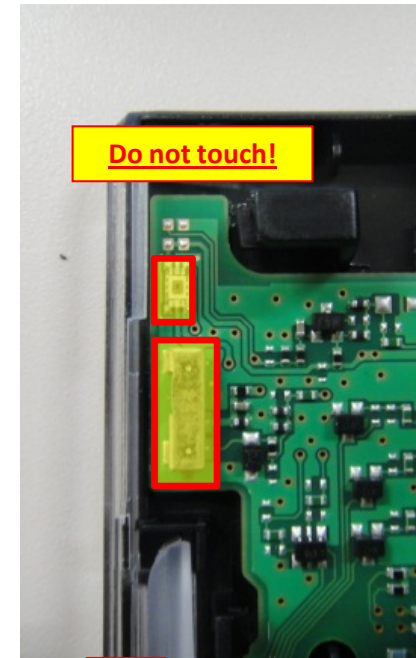
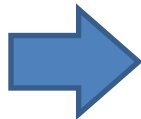
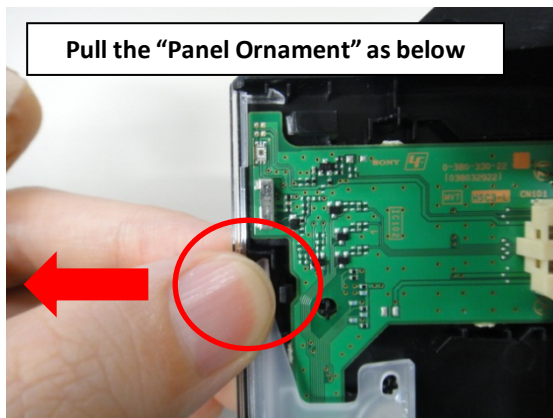
### 1-2-4. Light Case Disassembly

#### b) Disassembly of "PANEL, ORNAMENT"

Step 2 : Detach "PANEL, ORNAMENT" as shown below.



 : Location to pull



 : component

**Caution Point:** Avoid touching board components


## 1-2. Procedure To Disassemble Smart Core

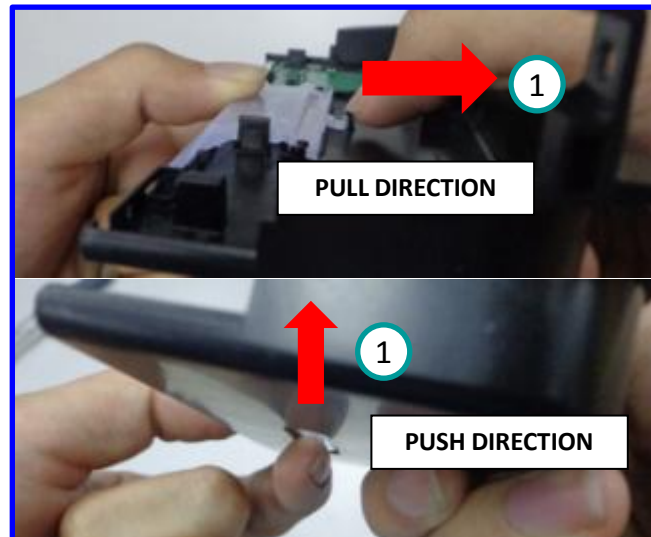
### 1-2-4. Light Case Disassembly

#### c) Disassembly of "LIGHT, GUIDE"

Step 3.1 : Detach LIGHT, GUIDE from hook and push LIGHT, GUIDE from bottom simultaneously.



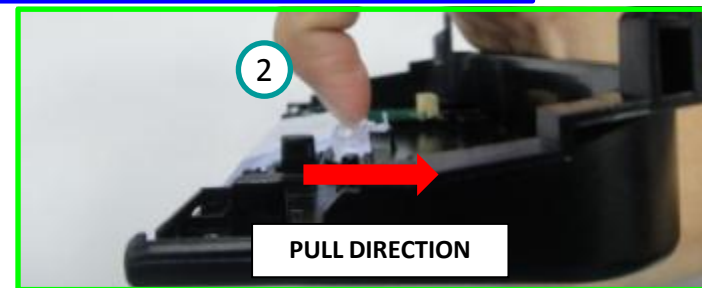
 : Hook location



Step 3.2 : Pull the LIGHT, GUIDE inwards to remove it

#### **Remarks:**

Step 2 is important to avoid hook broken from Case, Bottom and Light, Guide.

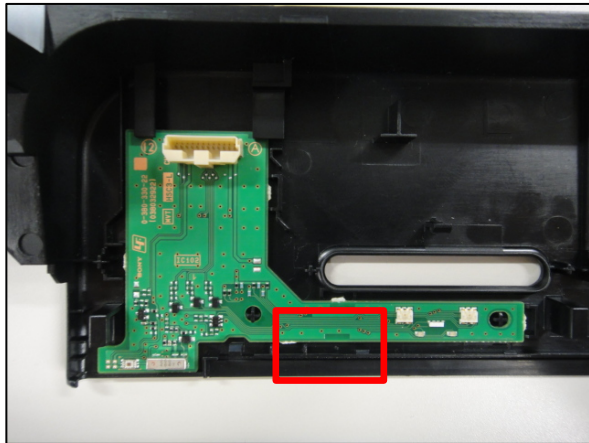


1-2. Procedure To Disassemble Smart Core

1-2-4. Light Case Disassembly

d) Disassembly of "HSC3 Board"

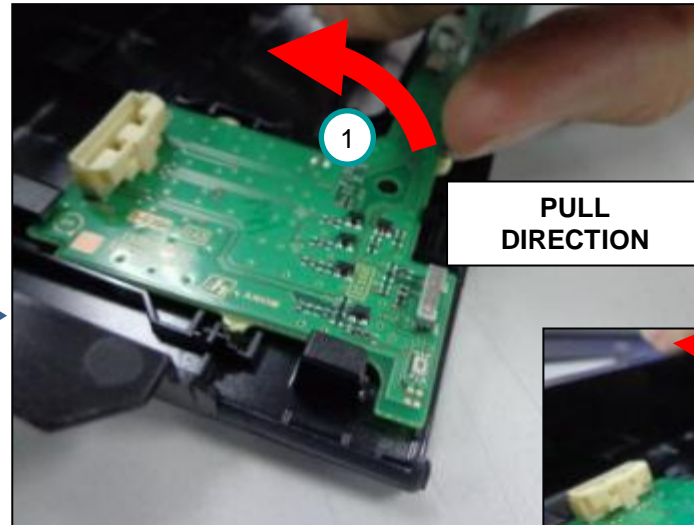
Step 3-3 : Take out HSC3L from CASE, BOTTOM



 : Location to pull

**Remarks:**

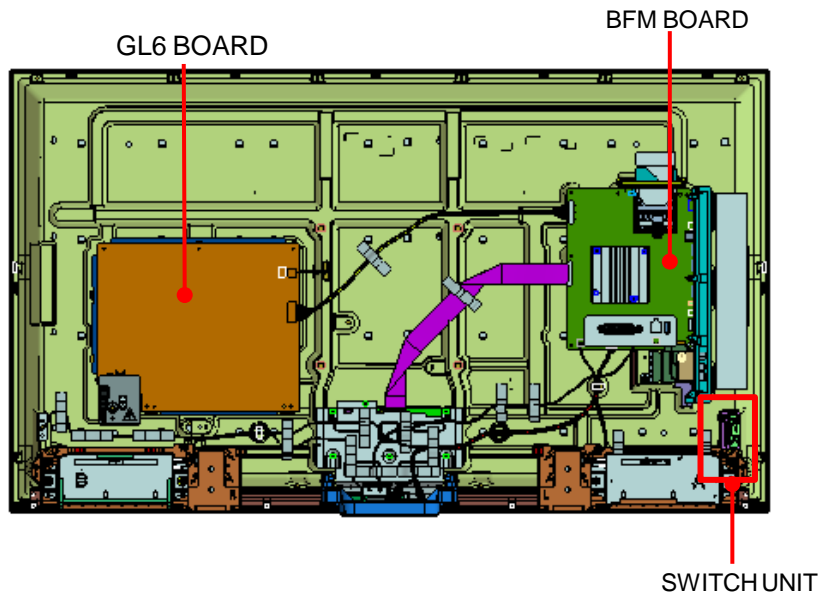
Do not pull on any components on HSC PWB!



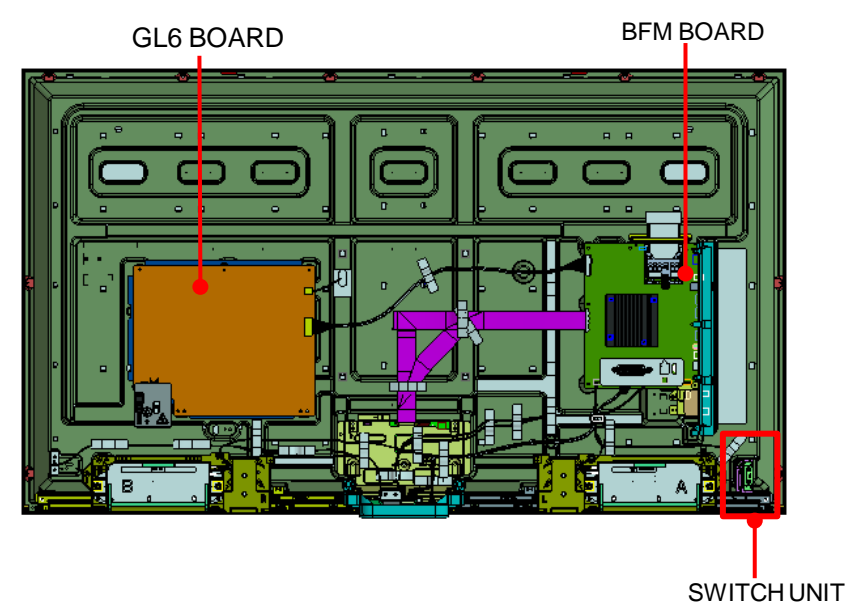
## SECTION 2 DIAGRAMS

### 2-1. BOARD LOCATION

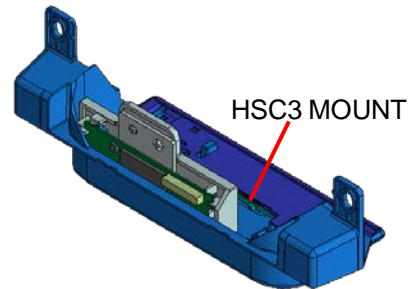
#### 2-1-1. KD-49X7\*D, XBR-49X7\*D



#### 2-1-2. KD-55X7\*D, XBR-55X7\*D

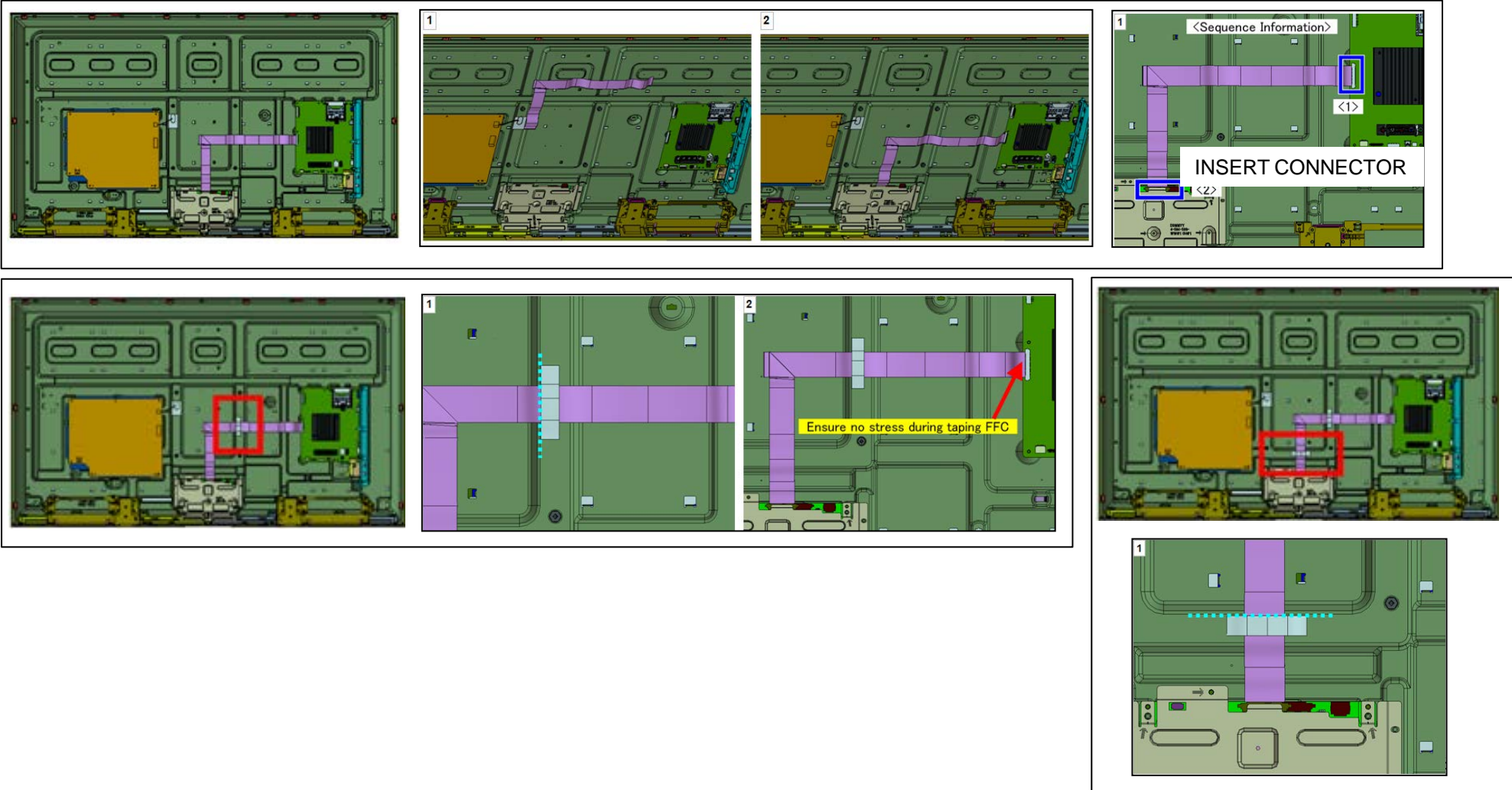


### <SMART CORE BLOCK >



## 2-2. Wire Dressing

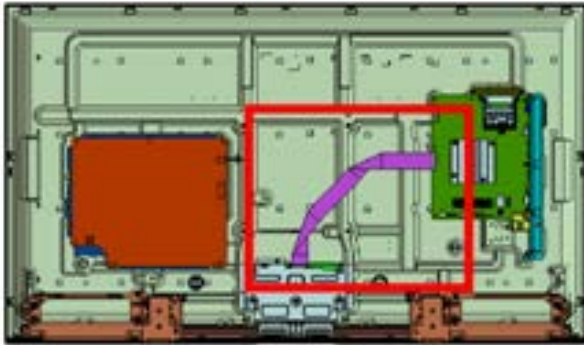
### 2-2-1. FLEXIBLE FLAT CABLE 51P (55" only)



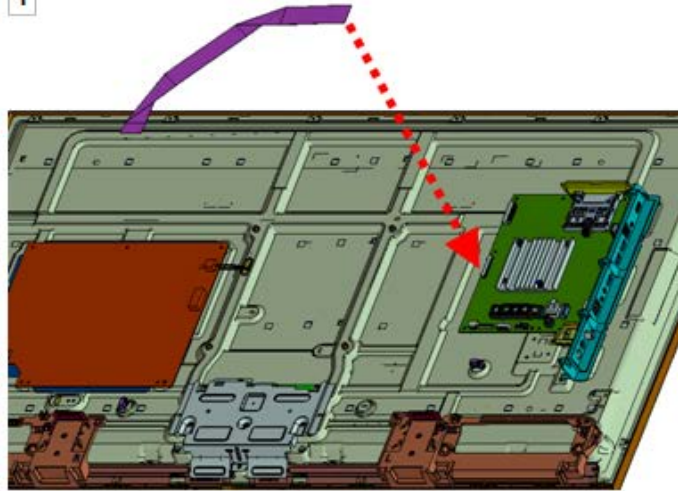
## 2-2. Wire Dressing

### 2-2-1. FLEXIBLE FLAT CABLE 51P

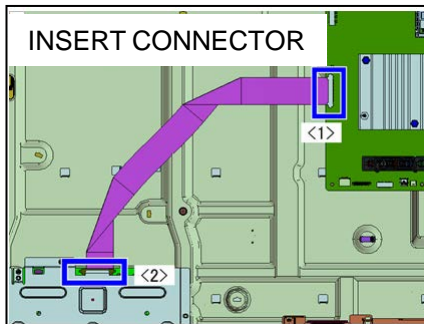
#### Overall View



1

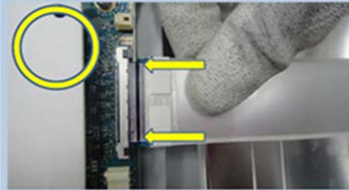


2



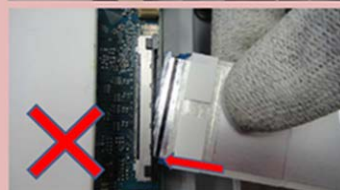
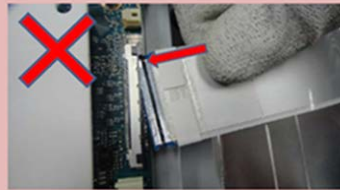
#### OK operation

→ Insert FFC in **straight** direction/condition into the connector and plunge it to the depths.



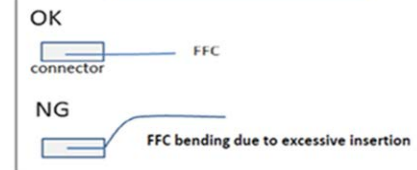
#### NG operation

→ DO NOT **slant** the FFC during insertion.



- 1) Don't apply excess insertion force to avoid bending of LVDS 51P FFC.
- 2) Replace FFC even once FFC bended over 30 degree.

#### Cross-section view of connector



Don't apply excessive force during insertion to avoid bending of LVDS



## 2-2. Wire Dressing

### 2-2-1. FLEXIBLE FLAT CABLE 51P

Caution: For Straight FFC Side Insertion (FFC insert in flat condition) and Wedge design

OK



1) Hold FFC by using the FFC holder



2) Insert FFC to main board straight and as parallel to main board  
(Allowance: Within 30 Degree)

NG

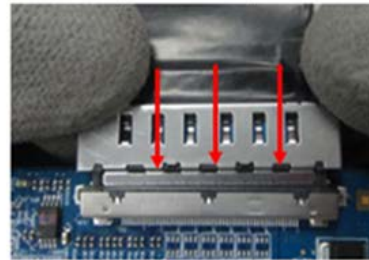


1) FFC conn flip / slanting. (> 30 degree)

\* Note : FFC as in image is only for reference purpose. Actual FFC outlook may vary by each vendor

Caution for FFC with connector installation at panel side

OK



NG



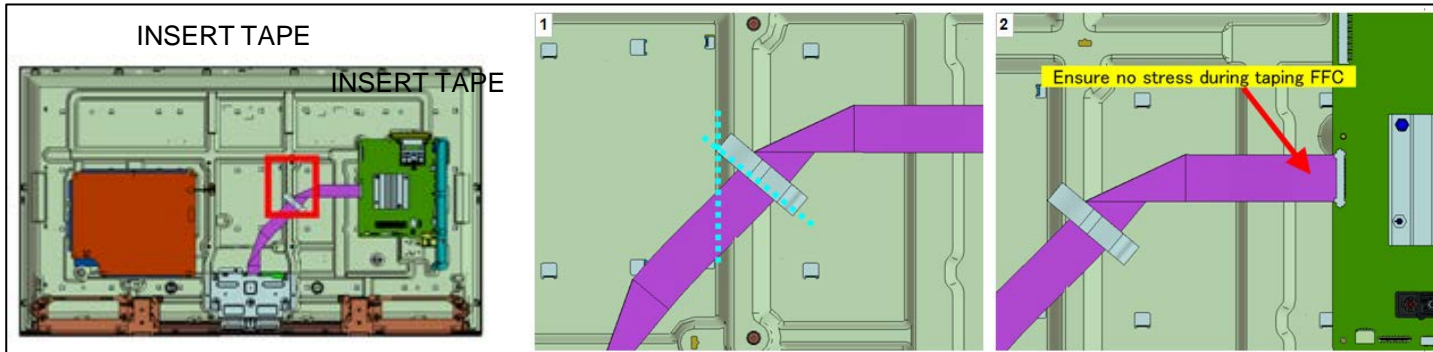
ABNORMAL HANDLING AT PANEL SIDE WILL CAUSE CONTACT SHIFTED AS PICTURE BELOW:



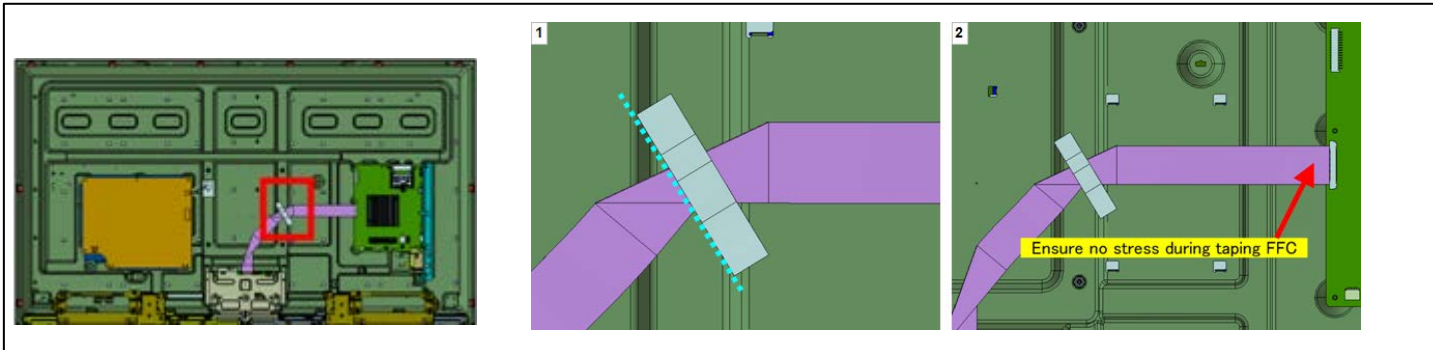
## 2-2. Wire Dressing

### 2-2-1. FLEXIBLE FLAT CABLE 51P

49"

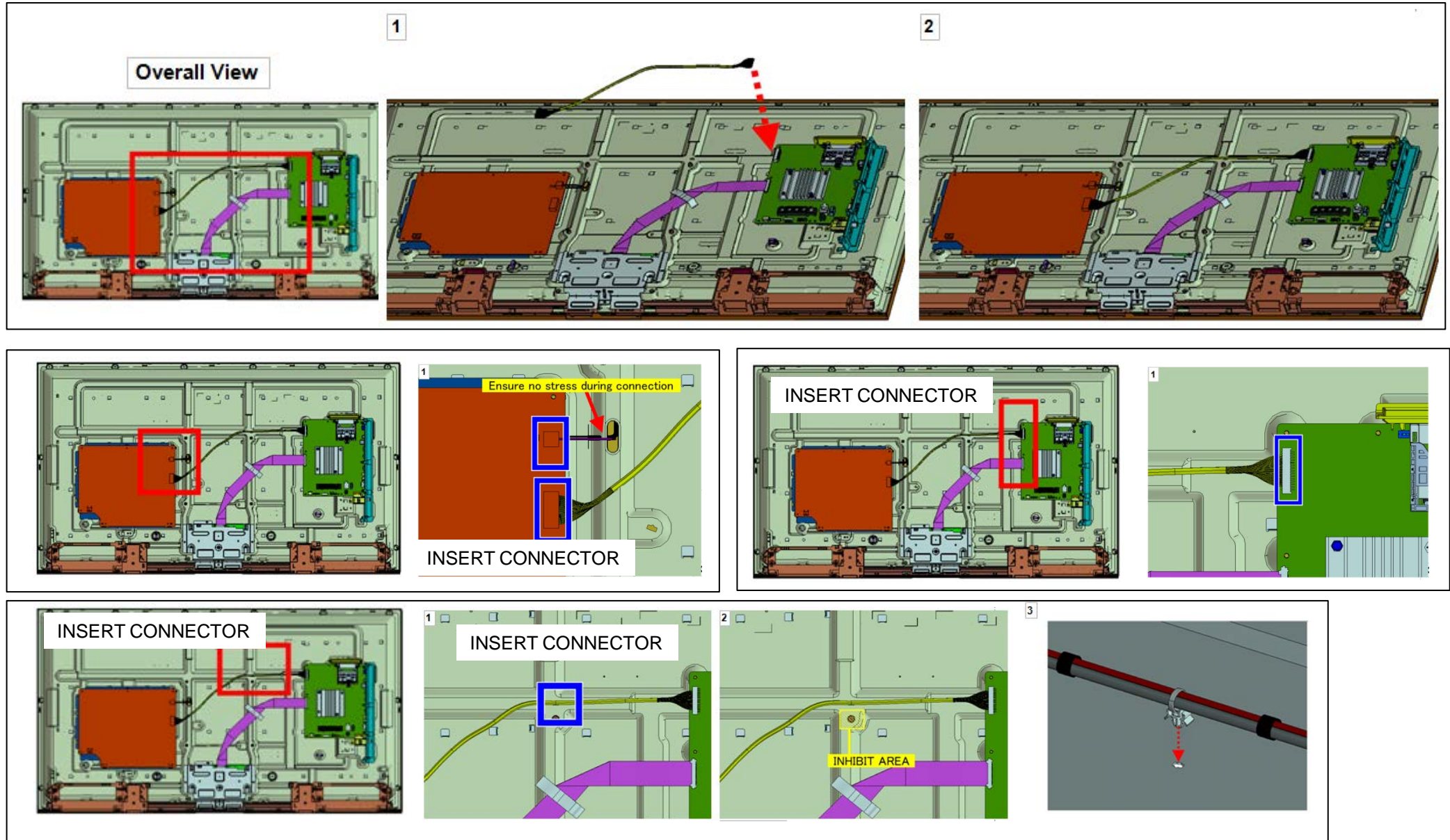


55"



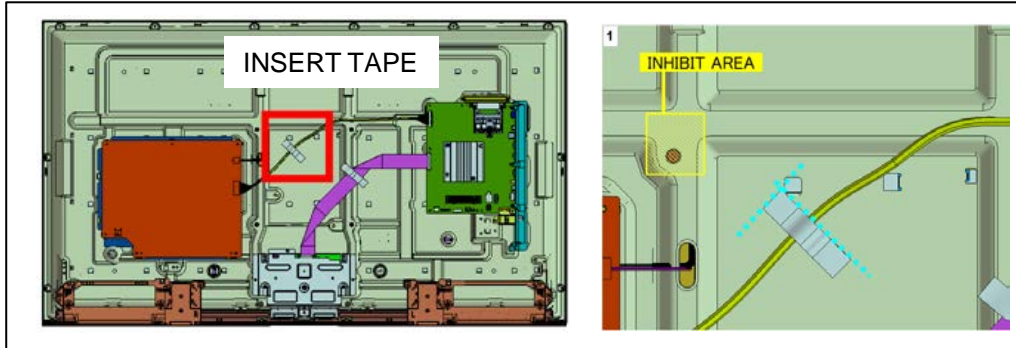
## 2-2. Wire Dressing

### 2-2-2. CONNECTOR ASSY 30P



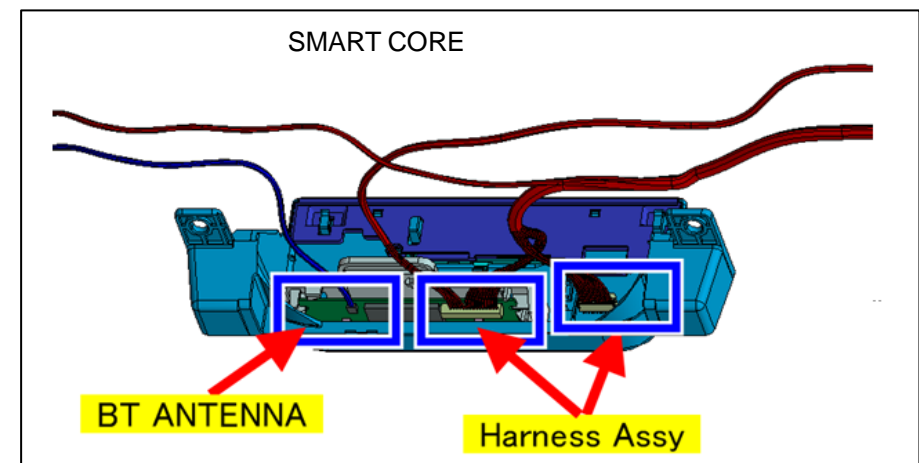
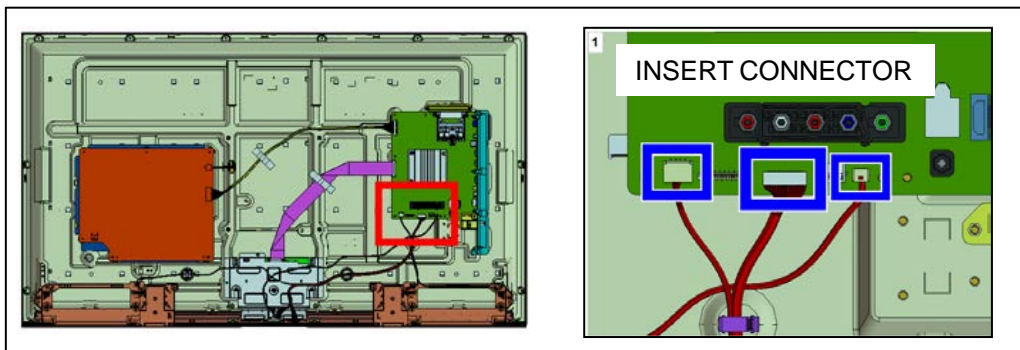
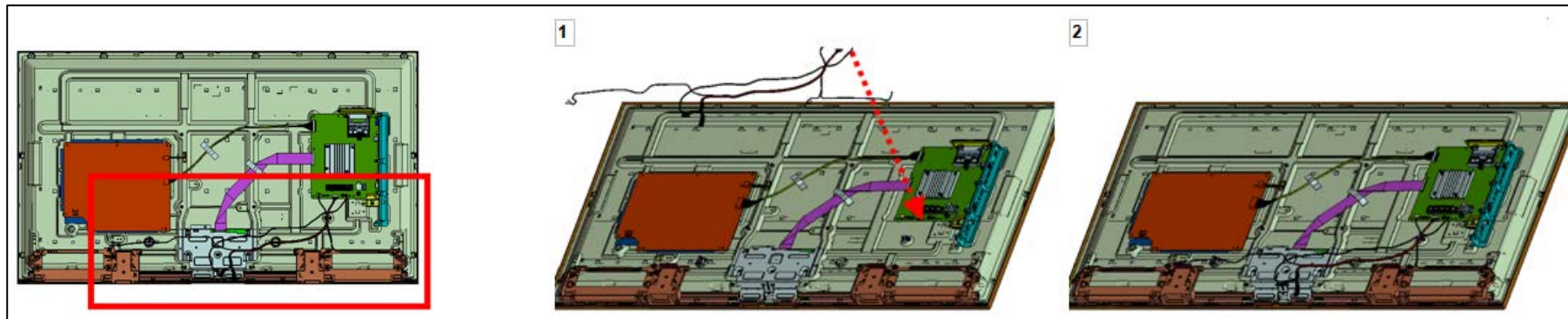
## 2-2. Wire Dressing

### 2-2-2. CONNECTOR ASSY 30P



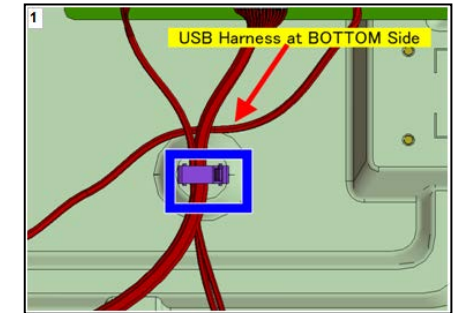
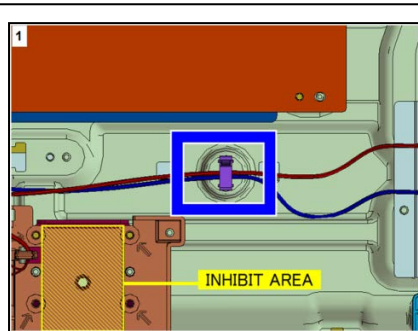
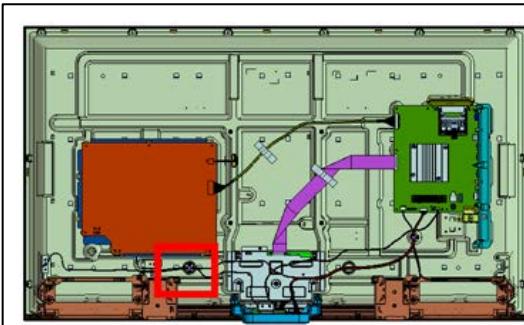
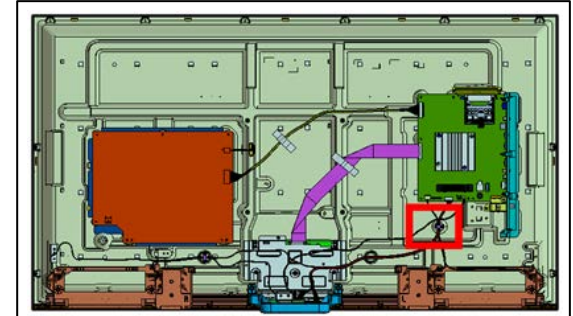
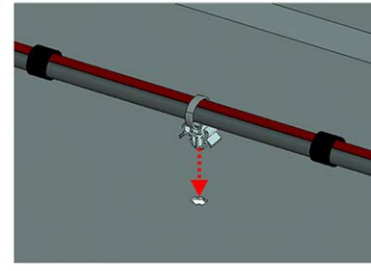
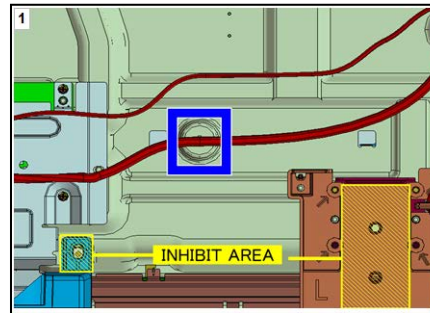
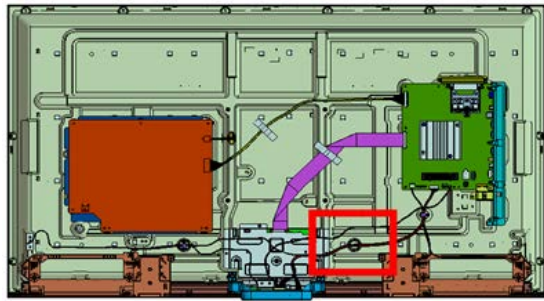
## 2-2. Wire Dressing

### 2-2-3. HARNESS ASSY



## 2-2. Wire Dressing

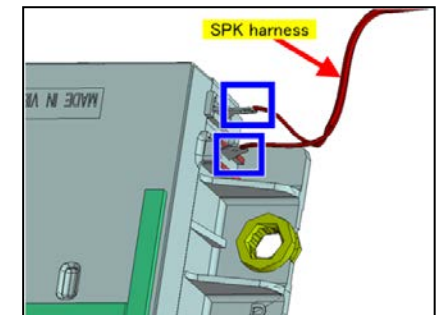
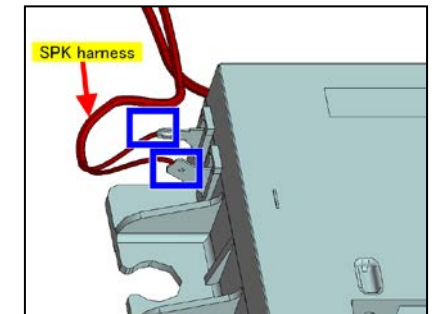
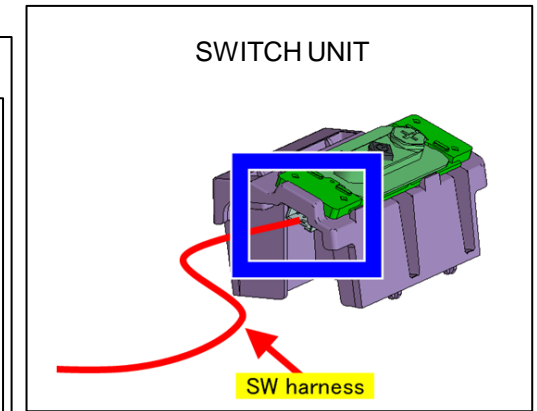
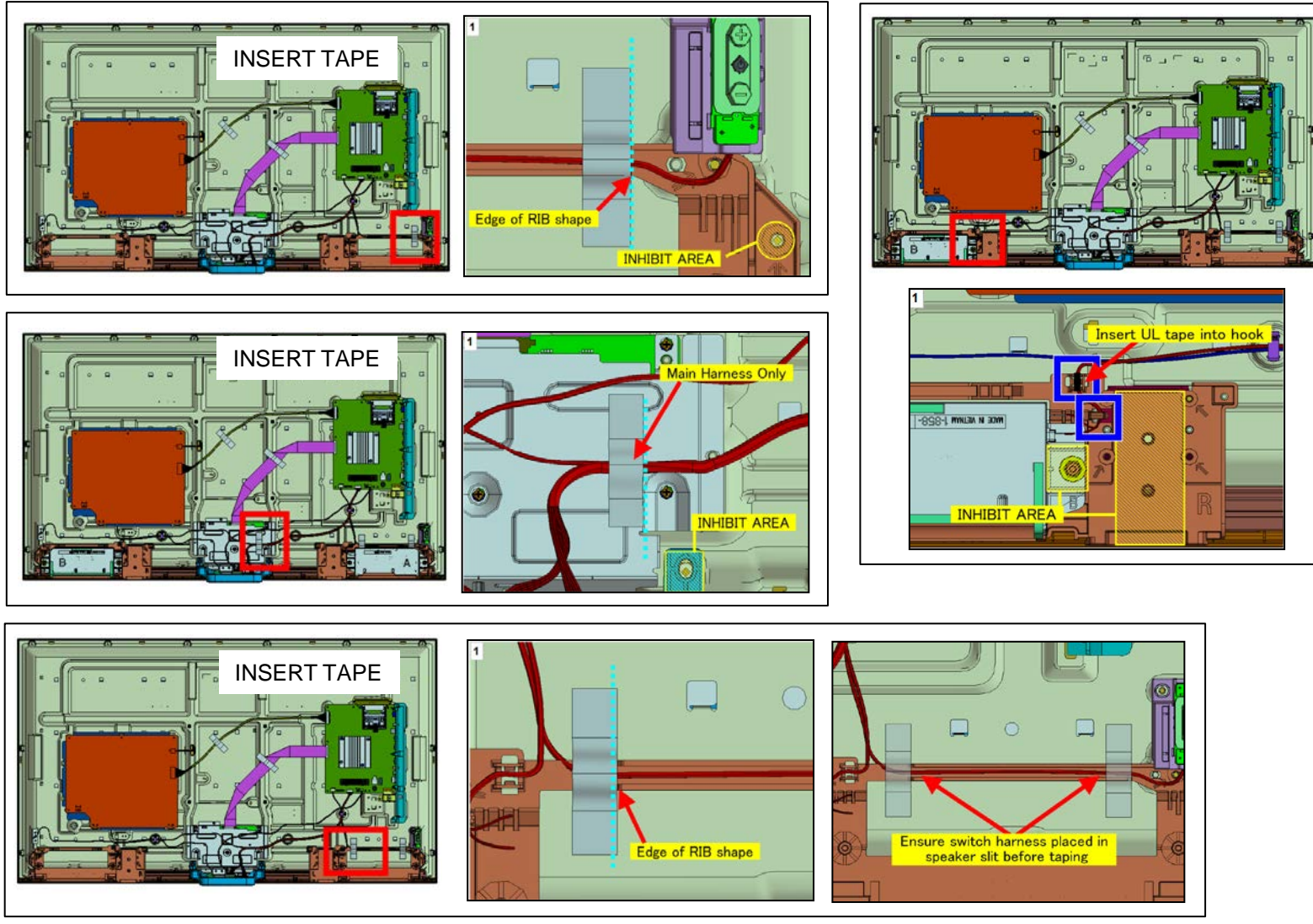
### 2-2-3. HARNESS ASSY (49")



## 2-2. Wire Dressing

### 2-2-3. HARNESS ASSY

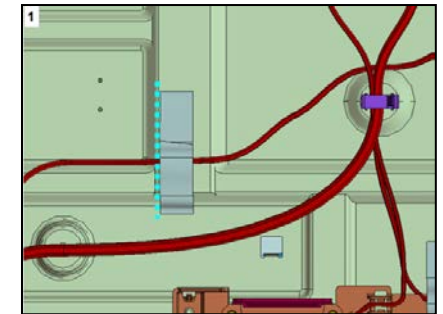
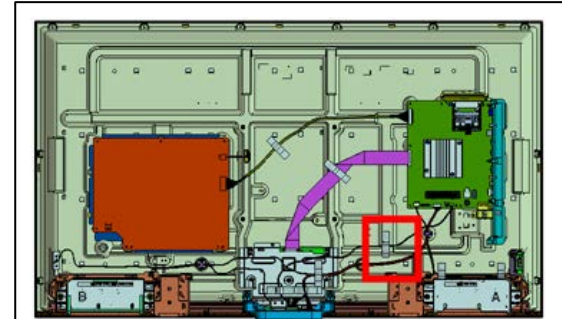
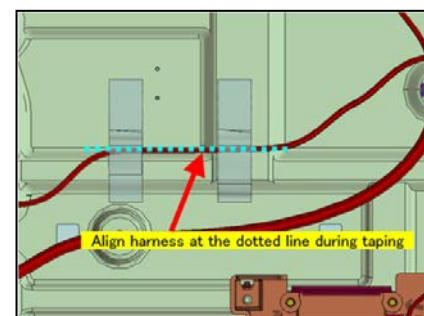
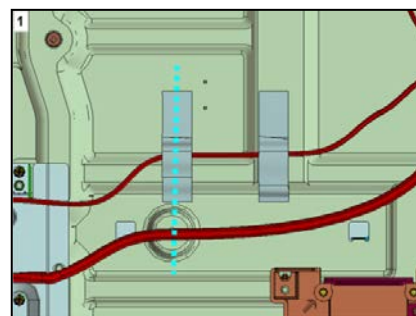
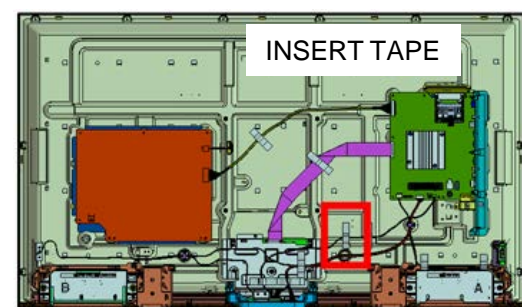
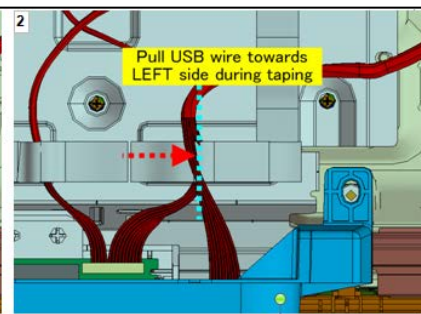
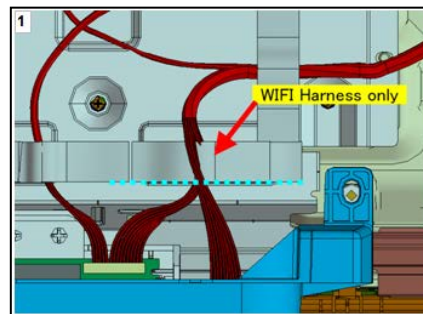
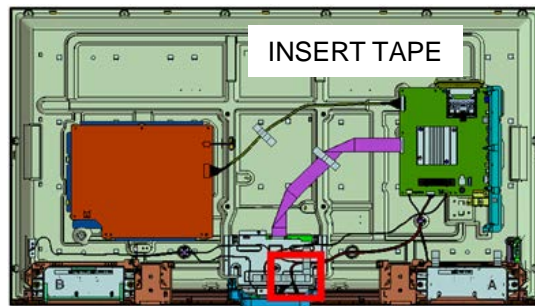
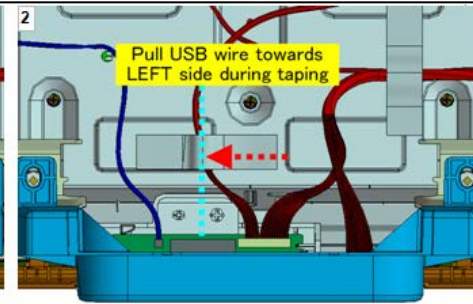
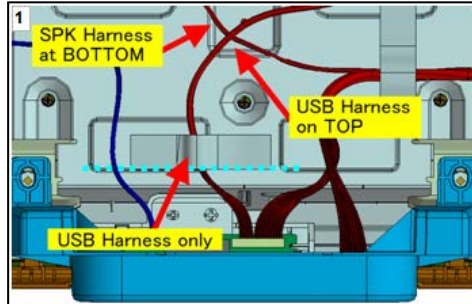
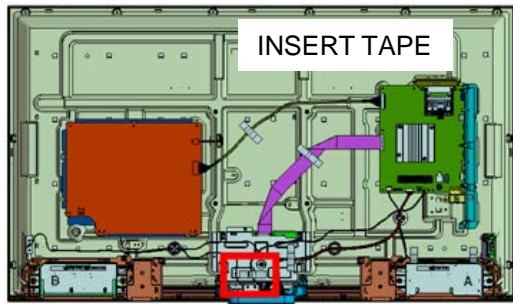
49"



## 2-2. Wire Dressing

### 2-2-3. HARNESS ASSY

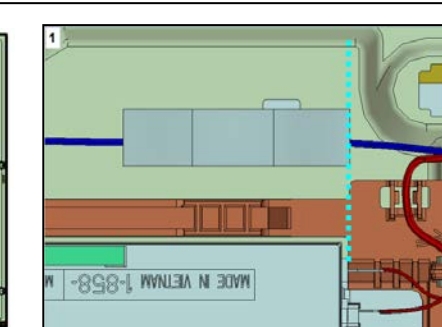
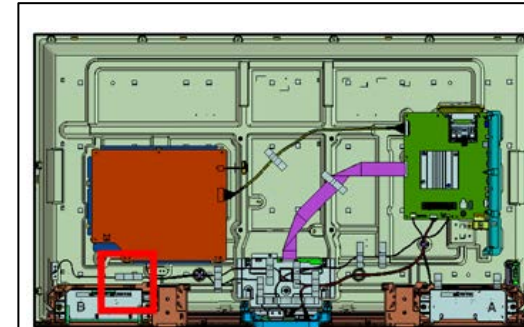
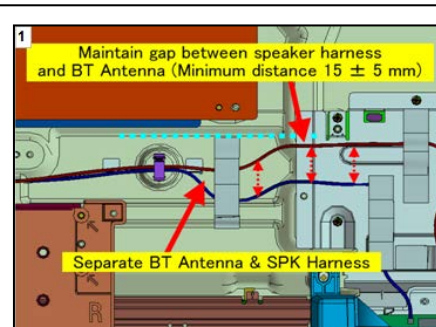
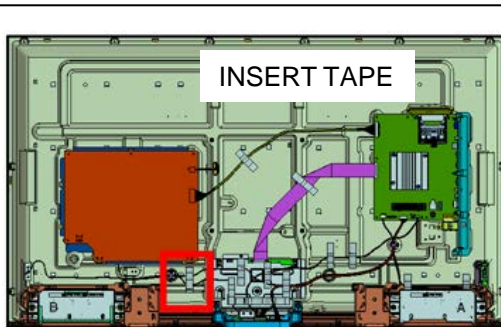
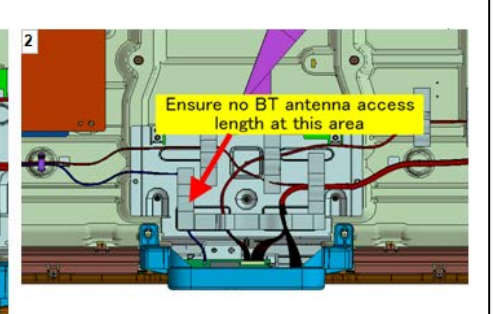
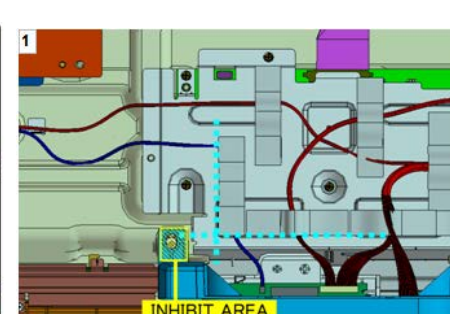
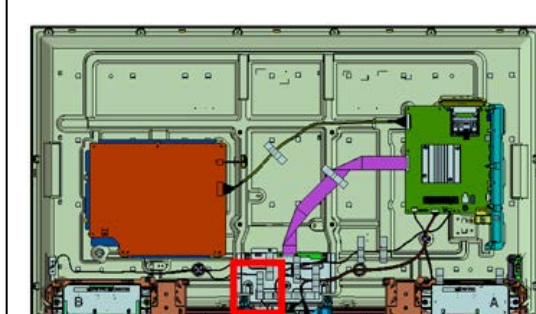
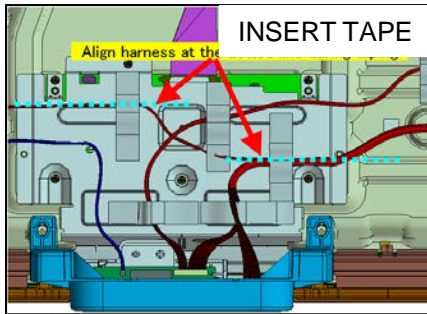
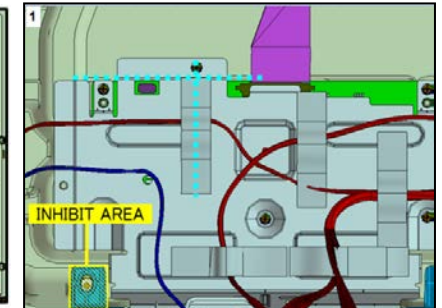
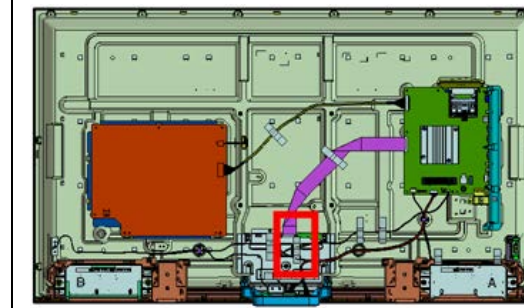
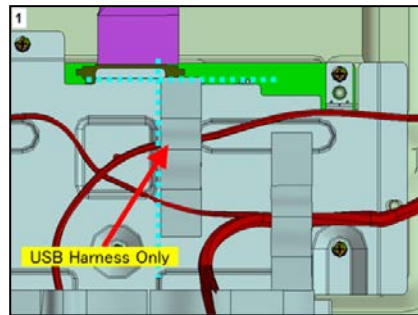
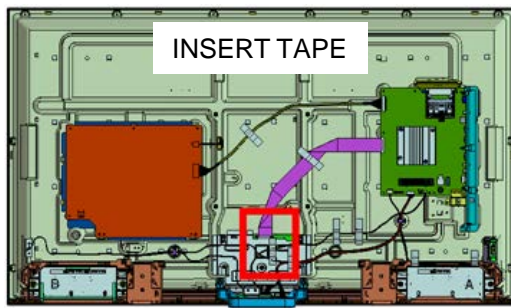
49''



## 2-2. Wire Dressing

### 2-2-3. HARNESS ASSY

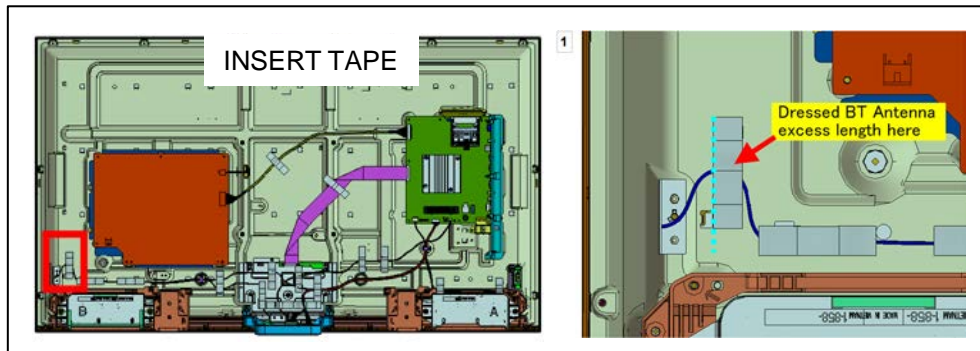
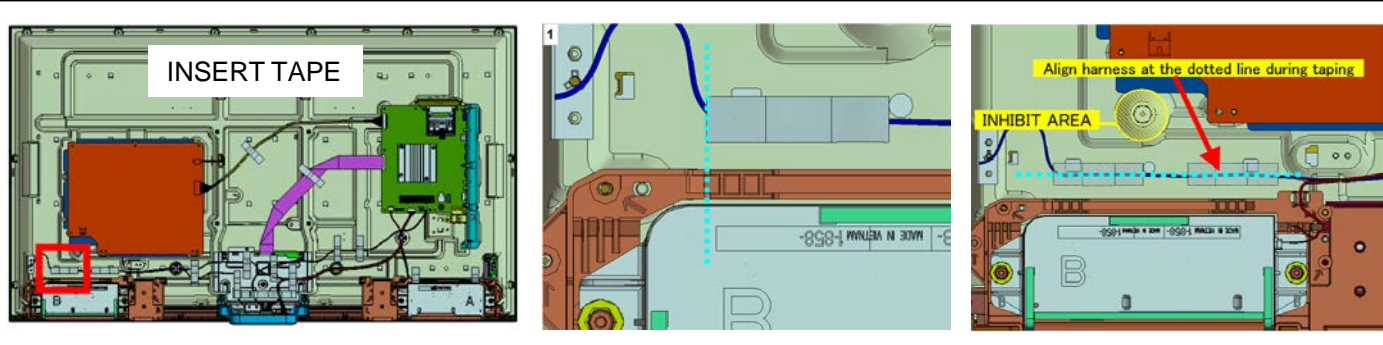
49"



## 2-2. Wire Dressing

### 2-2-3. HARNESS ASSY

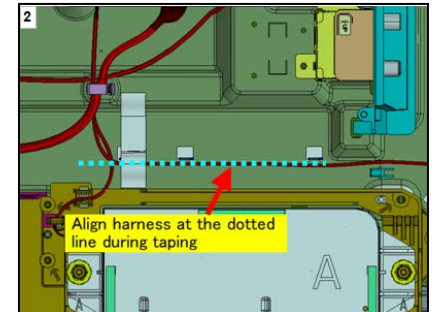
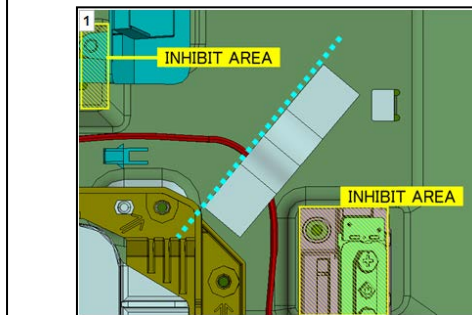
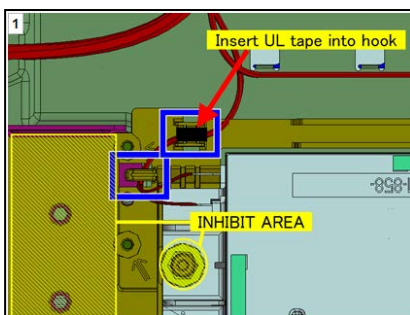
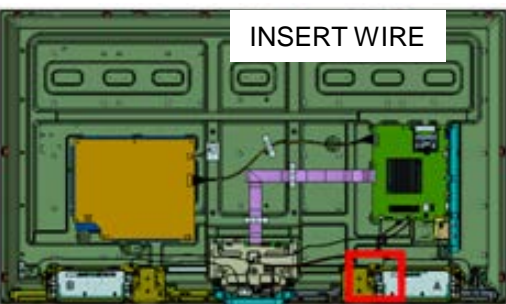
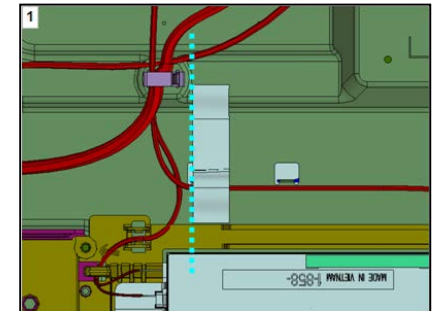
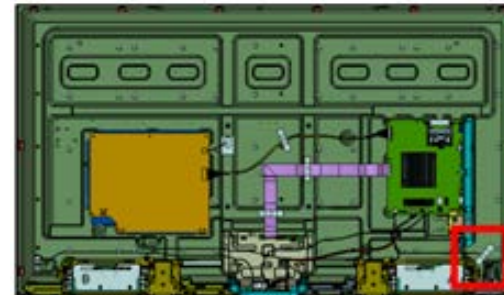
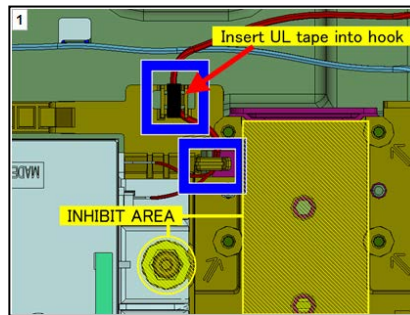
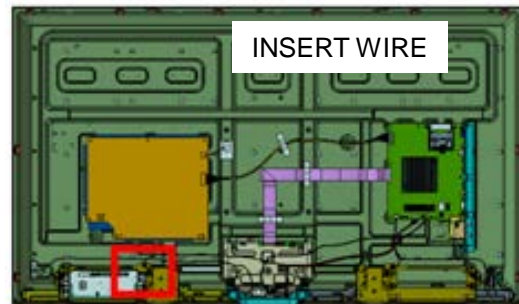
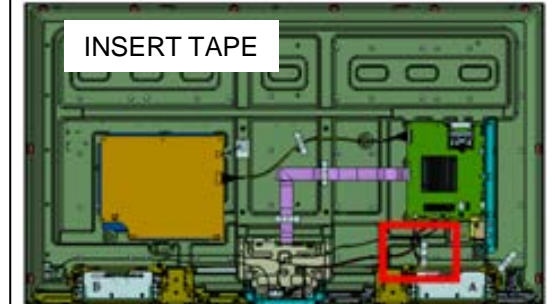
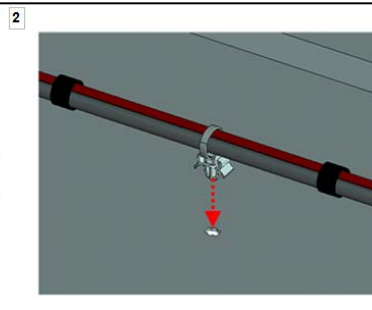
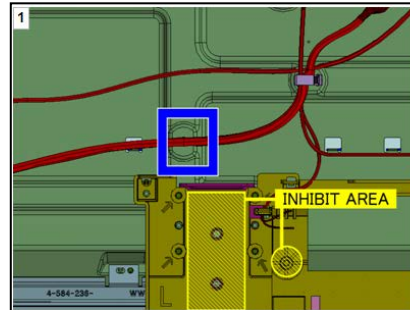
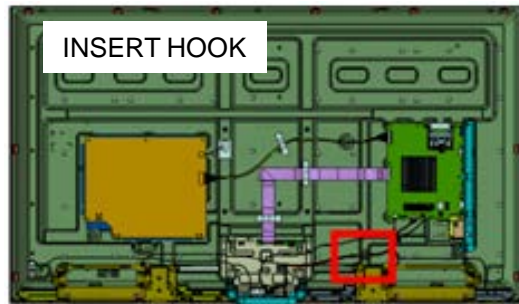
49"



## 2-2. Wire Dressing

### 2-2-3. HARNESS ASSY

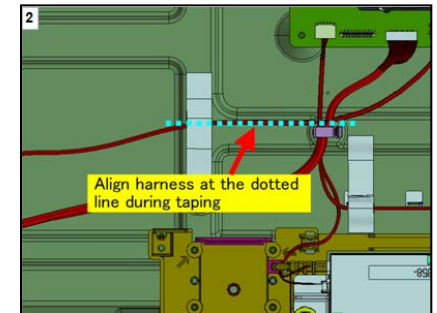
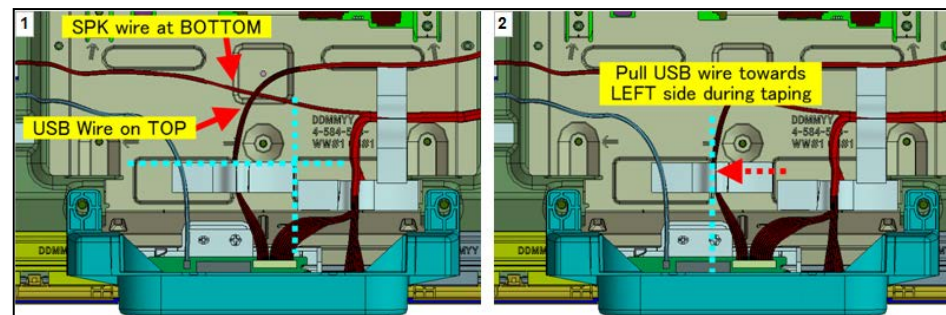
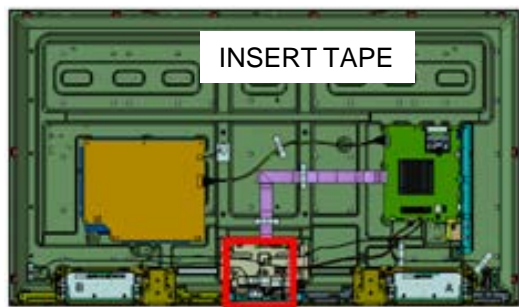
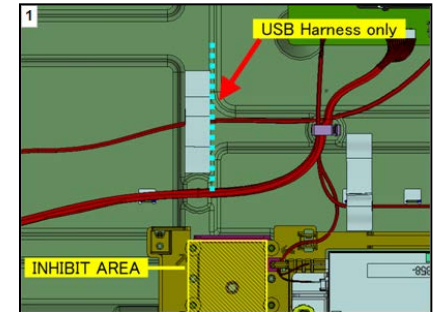
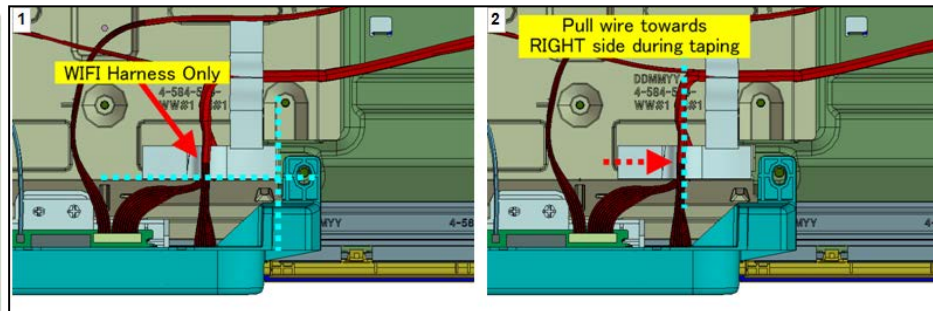
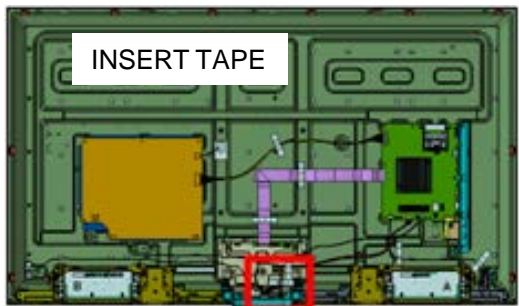
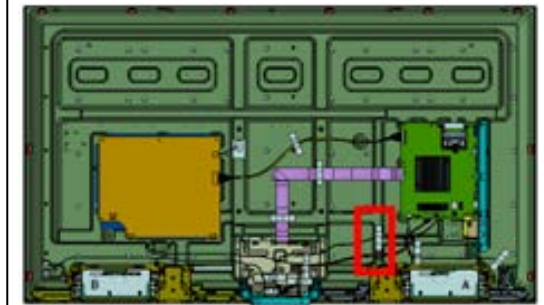
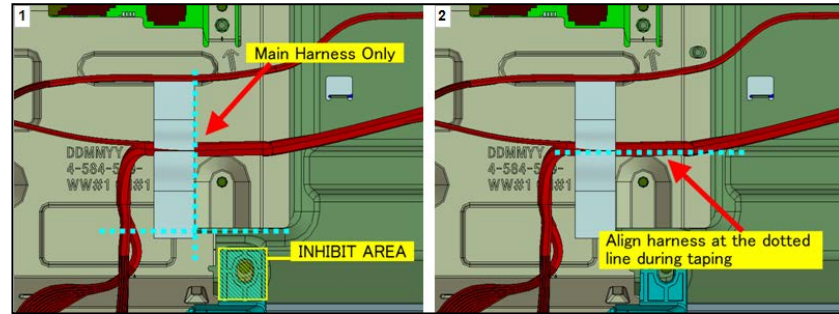
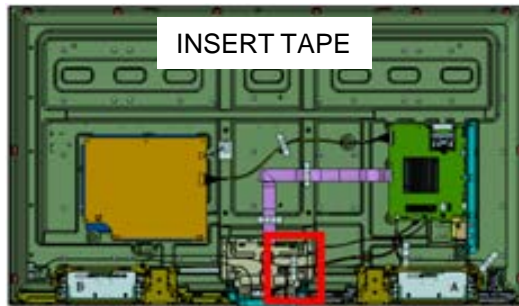
55"



## 2-2. Wire Dressing

### 2-2-3. HARNESS ASSY

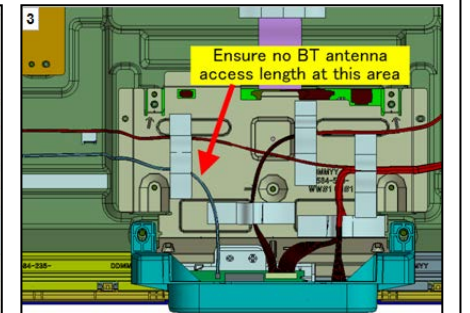
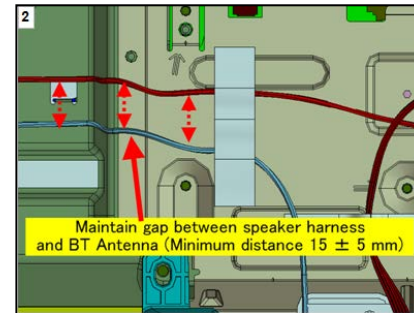
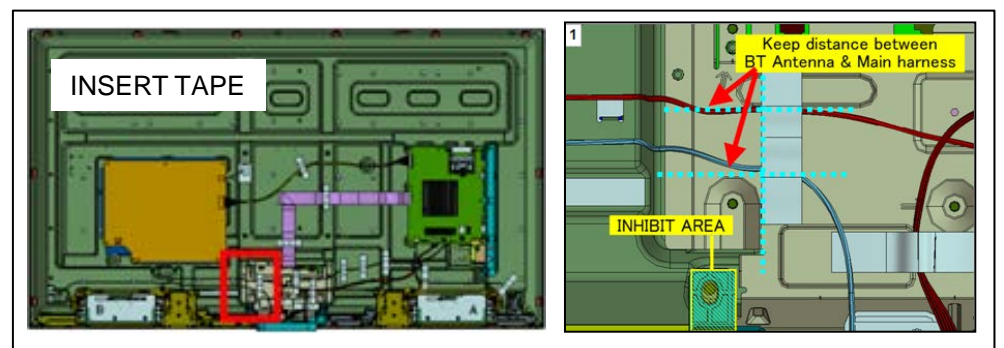
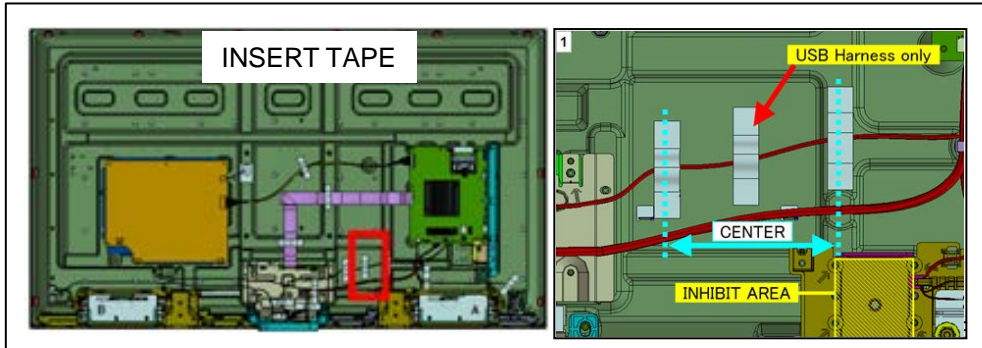
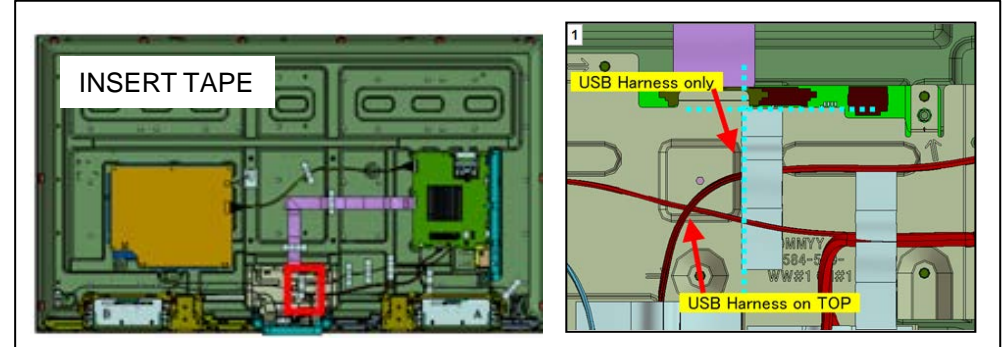
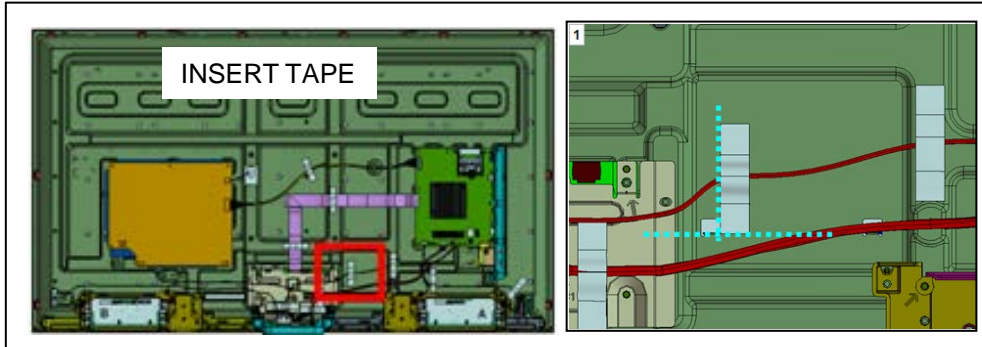
55"



## 2-2. Wire Dressing

### 2-2-3. HARNESS ASSY

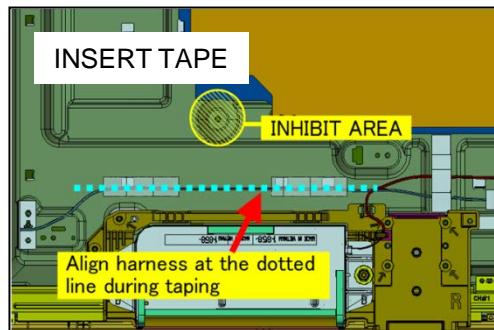
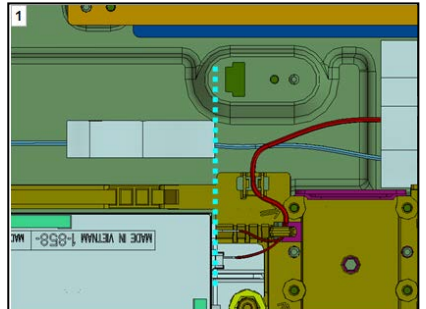
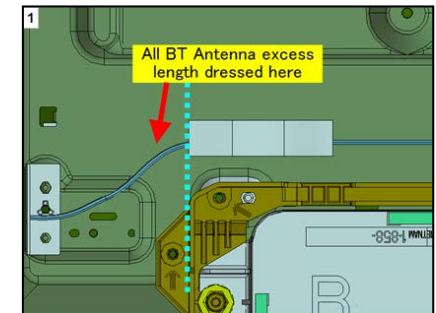
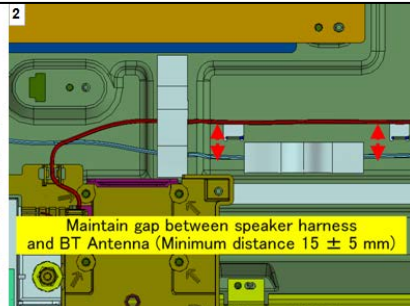
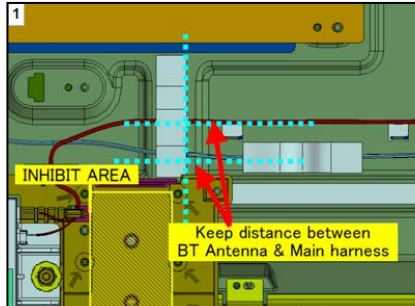
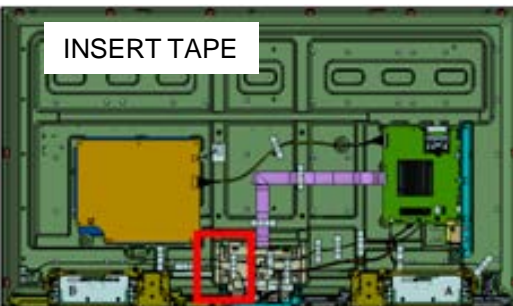
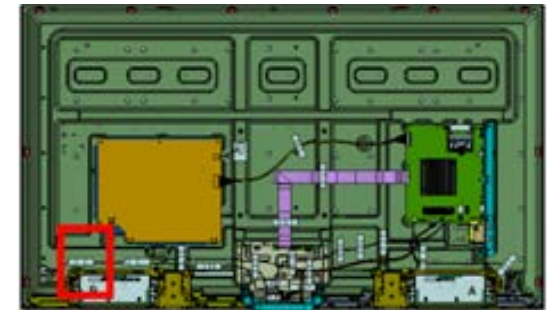
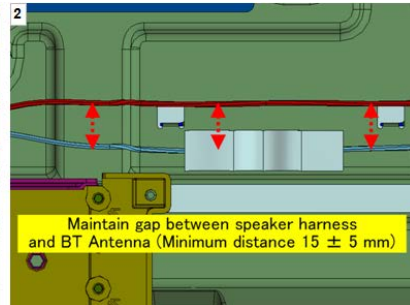
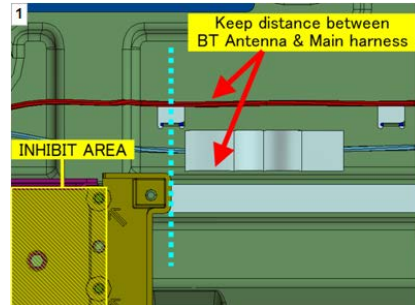
55"



## 2-2. Wire Dressing

### 2-2-3. HARNESS ASSY

55"

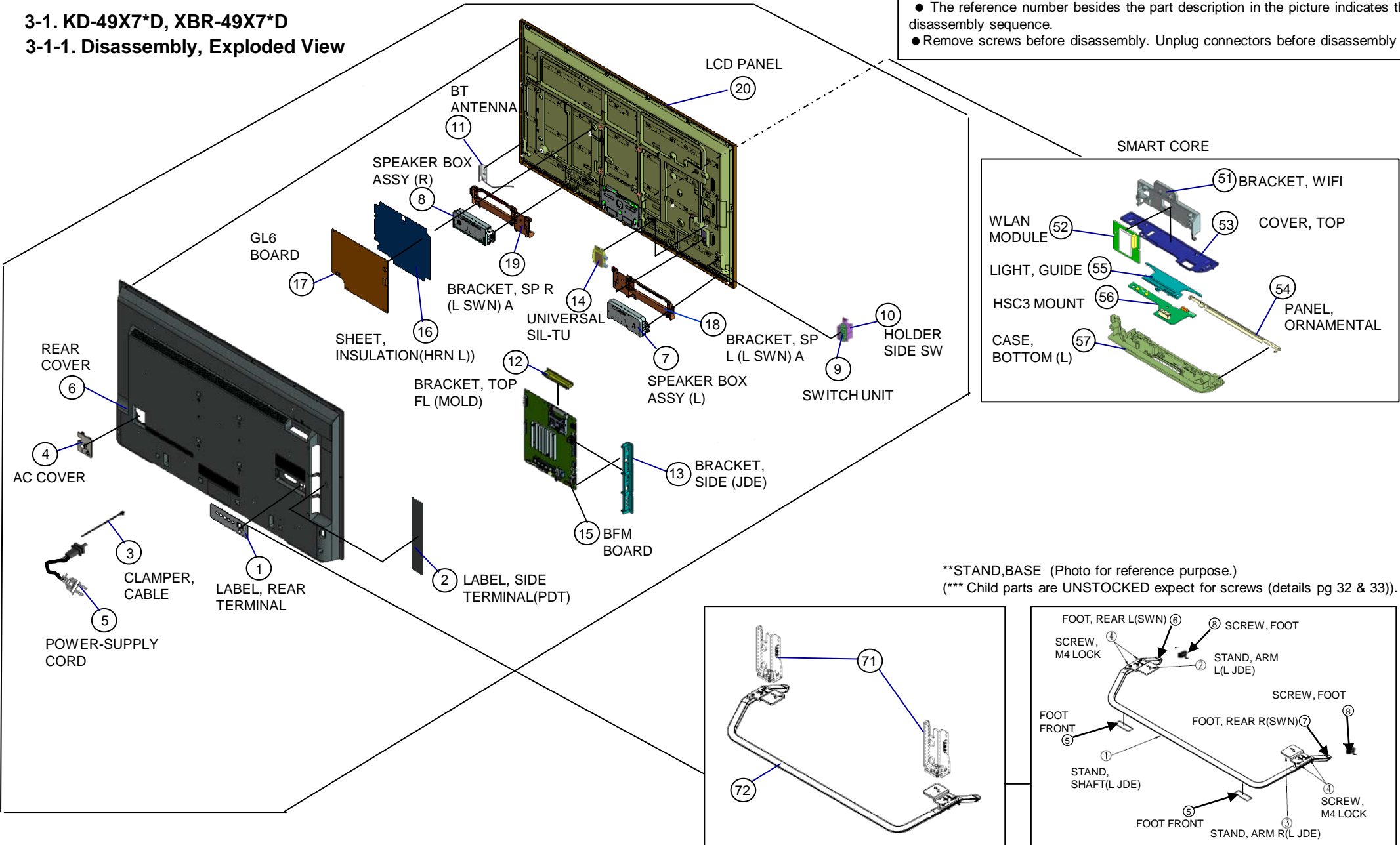


# SECTION 3 DISASSEMBLY, EXPLODED VIEWS AND OTHER PARTS

- Place the TV set facing downwards on a stable, level surface before disassembly and assembly of parts.
- and shaded parts are critical for safety. Replace only with part number specified.
- Parts contain confidential information. Strictly follow the instruction whenever the components are repaired and/or replaced.

- (\*) Parts are not stocked since they are seldom required for routine service. Some delays should be anticipated when ordering these components.
- Picture provided in this section might have slight difference from the actual sets.
- Lines that indicate parts are shown in blue in the illustration.
- The reference number besides the part description in the picture indicates the disassembly sequence.
- Remove screws before disassembly. Unplug connectors before disassembly

## 3-1. KD-49X7\*D, XBR-49X7\*D 3-1-1. Disassembly, Exploded View



\*\*STAND,BASE (Photo for reference purpose.)  
 (\*\*\*) Child parts are UNSTOCKED expect for screws (details pg 32 & 33)).

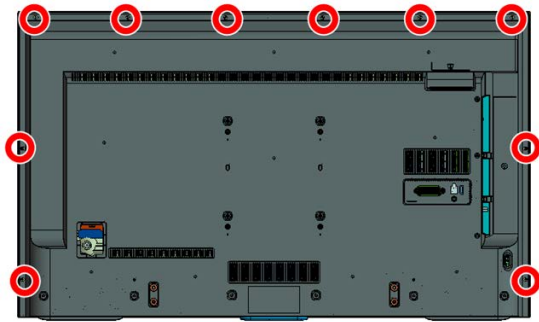
### 3-1. KD-49X7\*D, XBR-49X7\*D

#### 3-1-1. Disassembly, Exploded View

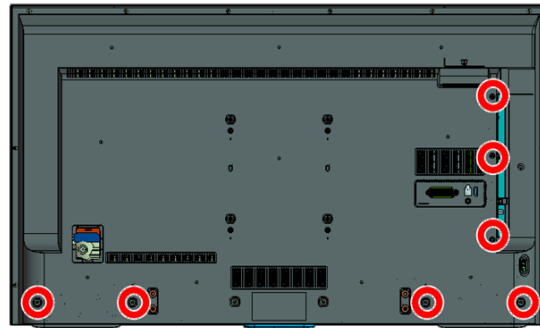
REF. NO.	DESCRIPTION	PART NO.	KD-49X7005D	XBR-49X700D			XBR-49X705D				XBR-49X707D
			DESTINATION	DESTINATION			DESTINATION				DESTINATION
			BR6	UC2	LA1	AR4	CR1	LA8	ECU	CO1	
1	LABEL, REAR TERMINAL (PDT)	4-585-154-01	n/a	•	n/a	n/a	n/a	n/a	n/a	n/a	
1	LABEL, REAR TERMINAL (PDT)	4-585-155-01	•	n/a	•	•	•	•	•	•	
2	LABEL, SIDE TERMINAL(PDT)	4-581-504-01	n/a	•	•	n/a	n/a	n/a	n/a	n/a	
2	LABEL, SIDE TERMINAL(PDT)	4-581-504-51	•	n/a	n/a	•	•	•	•	•	
3	CLAMPER, CABLE	4-262-708-04	•	•	•	•	•	•	•	•	
4	AC COVER	4-297-989-01	•	n/a	n/a	n/a	n/a	n/a	n/a	n/a	
4	AC COVER	4-299-531-01	n/a	•	•	•	•	•	•	•	
5	⚠ POWER-SUPPLY CORD (WITH CONN.)	1-839-691-12	n/a	n/a	n/a	n/a	•	•	•	n/a	
5	⚠ POWER SUPPLY CORD (WITH CONN)	1-846-001-12	•	n/a	n/a	n/a	n/a	n/a	n/a	n/a	
5	⚠ POWER-SUPPLY CORD (WITH CONN)	1-848-821-11	n/a	n/a	n/a	•	n/a	n/a	n/a	n/a	
5	⚠ POWER-SUPPLY CORD (WITH CONN.)	1-849-274-11	n/a	•	•	n/a	n/a	n/a	n/a	•	
6	COVER, REAR (M JDE) A	4-591-833-01	n/a	n/a	n/a	n/a	n/a	n/a	n/a	•	
6	COVER, REAR (M JDE) A	4-591-833-11	n/a	•	•	•	•	•	•	n/a	
6	COVER, REAR (M JDE) A	A-2125-583-A	•	n/a	n/a	n/a	n/a	n/a	n/a	n/a	
7	SPEAKER BOX ASSY (L)	1-858-963-51	•	•	•	•	•	•	•	•	
8	SPEAKER BOX ASSY (R)	1-858-963-61	•	•	•	•	•	•	•	•	
9	SWITCH UNIT (3M-P)	1-474-647-11	n/a	•	•	•	•	•	•	•	
9	SWITCH UNIT ASSY (3M-P-KIT)	A-2115-714-A	•	n/a	n/a	n/a	n/a	n/a	n/a	n/a	
10	HOLDER SIDE SW(JDE)	4-582-345-01	•	•	•	•	•	•	•	•	
11	BT ANTENNA	1-754-950-11	•	•	•	•	•	•	•	•	
12	BRACKET, TOP FL (MOLD)	4-546-441-11	n/a	n/a	n/a	n/a	n/a	n/a	n/a	•	
13	BRACKET, SIDE (JDE)	4-579-724-11	n/a	•	•	n/a	n/a	n/a	n/a	n/a	
13	BRACKET, SIDE (JDE)	4-579-724-21	n/a	n/a	n/a	•	•	•	•	•	
13	BRACKET, SIDE (JDE)	4-579-724-51	•	n/a	n/a	n/a	n/a	n/a	n/a	n/a	
14	UNIVERSAL SIL-TU SUT-RA243ZP	8-594-302-00	n/a	•	•	n/a	n/a	n/a	n/a	n/a	
14	UNIVERSAL SIL-TU SUT-DB243ZP	8-594-307-00	n/a	n/a	n/a	n/a	n/a	n/a	n/a	•	
14	UNIVERSAL SIL-TU SUT-RT243ZP	8-594-308-00	•	n/a	n/a	•	•	•	•	n/a	
15	COMPL SVC BFM_CO_CI	A-2094-461-A	n/a	n/a	n/a	n/a	n/a	n/a	n/a	•	
15	COMPL SVC BFM_LA_G	A-2094-462-A	n/a	n/a	n/a	n/a	n/a	•	n/a	n/a	
15	COMPL SVC BFM_UC_I_S	A-2094-463-A	n/a	•	n/a	n/a	n/a	n/a	n/a	n/a	
15	COMPL SVC BFM_IN_I	A-2094-466-A	n/a	n/a	•	n/a	n/a	n/a	n/a	n/a	
15	COMPL SVC BFM_BR	A-2103-815-A	•	n/a	n/a	n/a	n/a	n/a	n/a	n/a	
15	COMPL SVC BFM_LAAR_GINGA	A-2144-168-A	n/a	n/a	n/a	•	•	n/a	•	n/a	
16	SHEET, INSULATION(HRN L)	4-565-059-11	•	•	•	•	•	•	•	•	
17	⚠ GL6(CH)-STATIC CONVERTER(TV)	1-474-633-21	n/a	•	•	•	•	•	•	•	
17	⚠ GL6(BR)-STATIC CONVERTER (TV)	A-2126-042-A	•	n/a	n/a	n/a	n/a	n/a	n/a	n/a	
18	BRACKET, SP L (L SWN) A	4-570-851-01	n/a	•	•	•	•	•	•	•	
18	BRACKET, SP L (L SWN) A	A-2125-513-A	•	n/a	n/a	n/a	n/a	n/a	n/a	n/a	
19	BRACKET, SP R (L SWN) A	4-570-852-01	n/a	•	•	•	•	•	•	•	
19	BRACKET, SP R (L SWN) A	A-2125-514-A	•	n/a	n/a	n/a	n/a	n/a	n/a	n/a	
20	⚠ PACKING (M JDE_OS) PANEL SVC	A-2143-317-A	•	•	•	•	•	•	•	•	
	<SMART CORE>										
51	BRACKET, WIFI	4-547-397-02	•	•	•	•	•	•	•	•	
52	WLAN/BT MODULE(11AC)	1-458-912-11	n/a	•	•	•	•	•	•	•	
52	WLAN/BT MODULE(11AC)BRZ	1-458-912-21	•	n/a	n/a	n/a	n/a	n/a	n/a	n/a	
53	COVER, TOP	4-547-395-01	•	•	•	•	•	•	•	•	
54	PANEL, ORNAMENT	4-547-389-01	•	•	•	•	•	•	•	•	
55	LIGHT, GUIDE	4-547-390-01	•	•	•	•	•	•	•	•	
56	HSC3_L MOUNT	A-2066-086-A	•	•	•	•	•	•	•	•	
56	HSC3_L_PONR MOUNT	A-2091-154-A	•	•	•	•	•	•	•	•	
57	CASE, BOTTOM (LL)	4-588-915-01	•	•	•	•	•	•	•	•	
	<STAND>										
71	STAND, NECK ASSY (L JDE)	4-589-099-01	n/a	•	•	•	•	•	•	•	
71	STAND, NECK ASSY (L JDE)	A-2125-509-A	•	n/a	n/a	n/a	n/a	n/a	n/a	n/a	
72	STAND, SHAFT (L JDE) A	4-585-539-01	n/a	•	•	•	•	•	•	•	
72	STAND, SHAFT (L JDE) A	A-2125-510-A	•	n/a	n/a	n/a	n/a	n/a	n/a	n/a	

3-1. KD-49X7\*D, XBR-49X7\*D

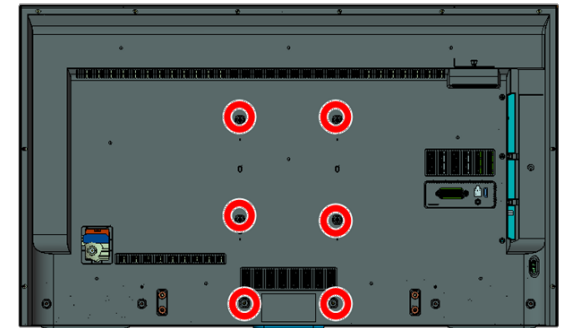
3-1-2. Screws



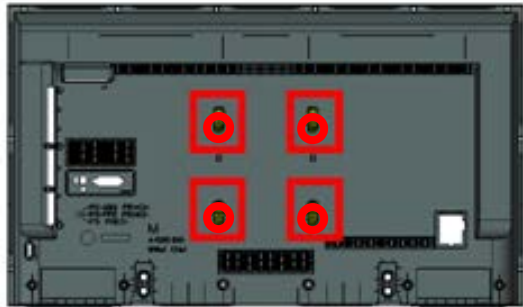
Description	Part No
SCREW M3X3.0 STEP	4-579-926-01



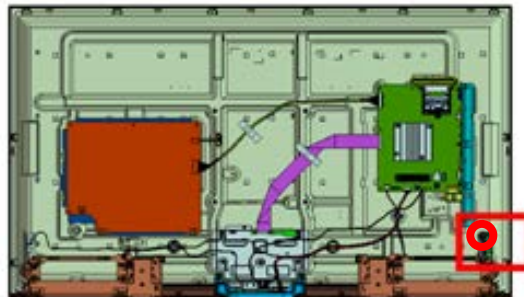
Description	Part No
SCREW, +BVTP 4X12 TYPE2 IT-3	2-580-639-01



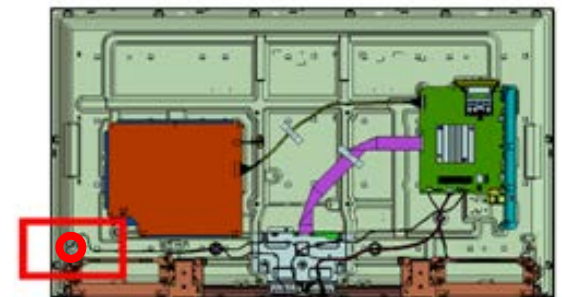
Description	Part No
SCREW, +PSW M4X10	4-159-298-01



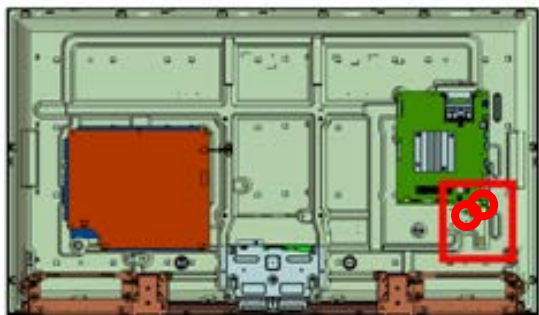
Description	Part No
SCREW +BVTP 3X8 TYPE2 IT-3	7-685-646-79



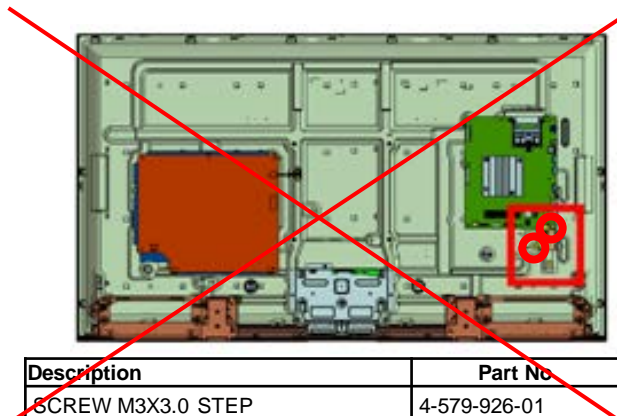
Description	Part No
SCREW M3X3.0 STEP	4-579-926-01



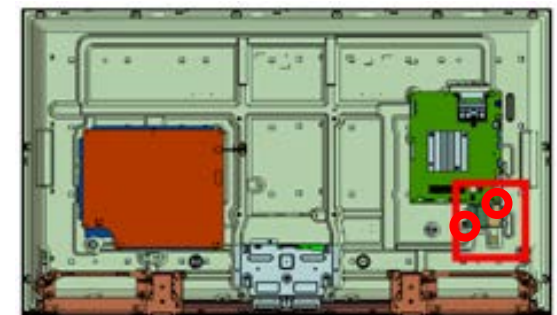
Description	Part No
SCREW +PSW, M3X6 W8	4-472-518-11



Description	Part No
SCREW +PSW, M3X6 W8	4-472-518-11



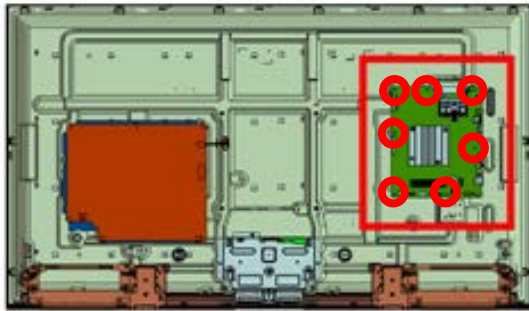
Description	Part No
<del>SCREW M3X3.0 STEP</del>	<del>4-579-926-01</del>



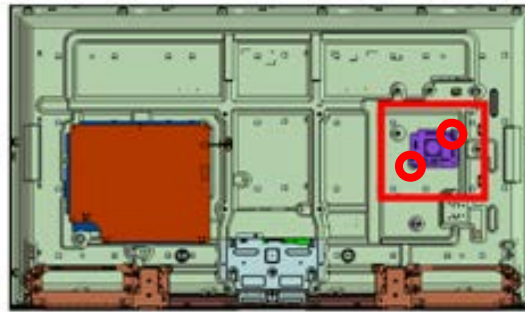
Description	Part No
SCREW +PSW, M3X6 W8	4-472-518-11

3-1. KD-49X7\*D, XBR-49X7\*D

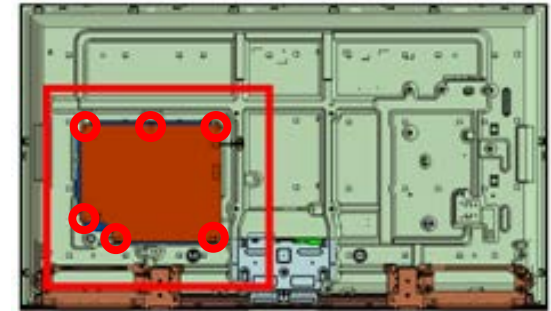
3-1-2. Screws



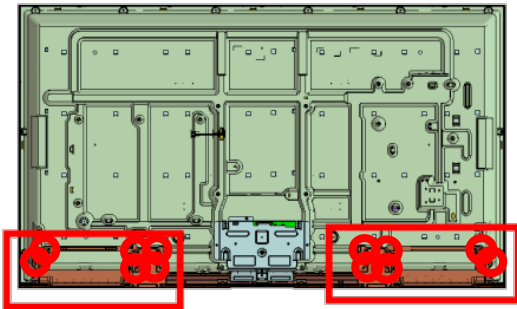
Description	Part No
SCREW +PSW, M3X6 W8	4-472-518-11



Description	Part No
SCREW +PSW M3x6 W8	4-472-518-11



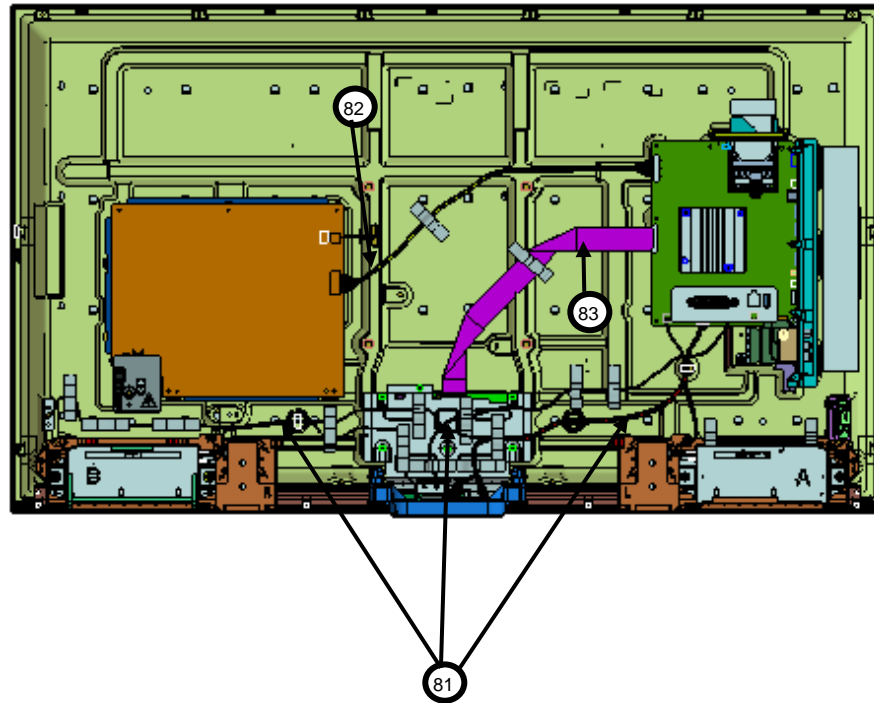
Description	Part No
SCREW, +PSW M3X6 W12	4-256-393-12



Description	Part No
SCREW, +PSW M3X8	2-580-593-01

### 3-1. KD-49X7\*D, XBR-49X7\*D

#### 3-1-3. Connectors



REF. NO.	DESCRIPTION	PART NO.	REMARK	KD-49X7005D	XBR-49X700D		XBR-49X705D				XBR-49X707D
				DESTINATION	DESTINATION		DESTINATION				DESTINATION
				BR6	UC2	LA1	AR4	CR1	LA8	ECU	CO1
81	HARNESS ASSY	1-910-805-72	(CN1000(BFM)-CN1001(BFM)-CN203(SM)-CN001(HSC3_L)-WIFI/BT/CN3202(BFM)-SP(1))	•	•	•	•	•	•	•	•
82	CONNECTOR ASSY 30P	1-910-805-73	(CN400(BFM)-CN6401(GL6))	•	•	•	•	•	•	•	•
83	FLEXIBLE FLAT CABLE 51P	1-849-467-11	(CN3800(BFM)-T-CON(1))	•	•	•	•	•	•	•	•

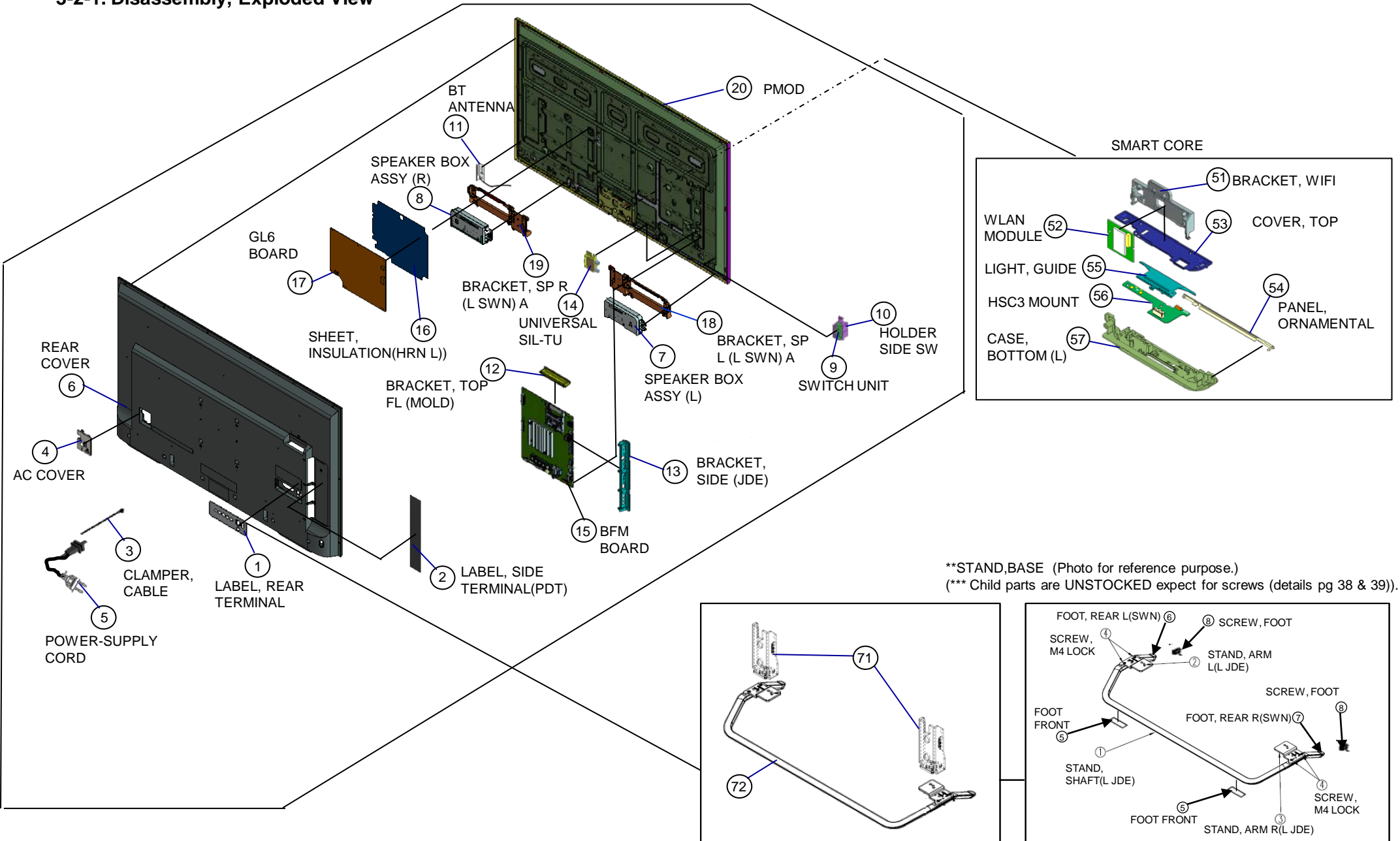
### 3-1. KD-49X7\*D, XBR-49X7\*D

#### 3-1-4. Other Parts

REF. NO.	DESCRIPTION	PART NO.	KD-49X7005D	XBR-49X700D			XBR-49X705D				XBR-49X707D
			DESTINATION	DESTINATION			DESTINATION				DESTINATION
			BR6	UC2	LA1	AR4	CR1	LA8	ECU	CO1	
	ADAPTOR, CONVERSION	1-785-504-21	n/a	n/a	n/a	n/a	•	•	•	n/a	
	ADHESIVE (SV380C) 333CC GRY	* 7-600-040-44	•	•	•	•	•	•	•	•	
	BADGE, XBR LOGO(H3.7)	4-535-586-02	•	•	•	•	•	•	•	•	
	CUSHION 825B	4-534-199-41	•	•	•	•	•	•	•	•	
	HEADER ASSEMBLY FOR PWB3P	1-822-693-11	•	n/a	n/a	n/a	n/a	n/a	n/a	n/a	
	HEAT SINK(MUFF2 C)	* 4-584-547-01	•	•	•	•	•	•	•	n/a	
	HOLDER(HS MUF)	* 4-549-188-01	•	•	•	•	•	•	•	n/a	
	HOLDER, HS WS (MUF)	* 4-548-743-01	•	•	•	•	•	•	•	n/a	
	IR BLASTER CABLE	1-849-161-11	n/a	•	•	n/a	n/a	n/a	n/a	n/a	
	RCA CONVERSION CABLE	* 1-848-803-12	n/a	•	•	•	•	•	•	•	
	REMOTE COMMANDER (RMT-TX200B)	1-493-160-11	n/a	n/a	n/a	•	•	•	•	•	
	REMOTE COMMANDER (RMT-TX200B)	1-493-160-21	•	n/a	n/a	n/a	n/a	n/a	n/a	n/a	
	REMOTE COMMANDER (RMT-TX200U)	1-493-159-11	n/a	•	•	n/a	n/a	n/a	n/a	n/a	
	SCREW, +PSW M5X12	2-580-607-01	•	•	•	•	•	•	•	•	
	SCREW, +PSW M3X10(SPECIAL NECK)	4-151-153-21	•	n/a	n/a	n/a	n/a	n/a	n/a	n/a	
	SHEET, THERMAL(BM)	4-549-186-01	•	•	•	•	•	•	•	•	
	TAPE (3M 1350FB-1)15MMX66M BLK	7-600-031-97	•	•	•	•	•	•	•	•	
	TAPE (3M 1350FW-1)15MMX66M WHT	7-600-031-96	n/a	•	•	•	•	•	•	•	
	TR TK8A50D	6-552-496-01	•	n/a	n/a	n/a	n/a	n/a	n/a	n/a	

### 3-2. KD-55X7\*D, XBR-55X7\*D

#### 3-2-1. Disassembly, Exploded View



\*\*STAND, BASE (Photo for reference purpose.)  
 (\*\* Child parts are UNSTOCKED expect for screws (details pg 38 & 39)).

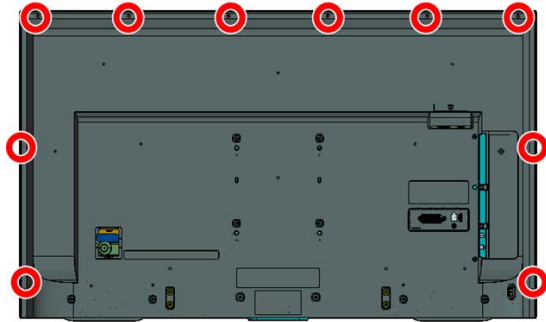
### 3-2. KD-55X7\*D, XBR-55X7\*D

#### 3-2-1. Disassembly, Exploded View

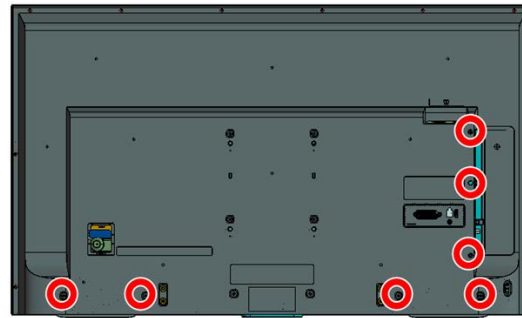
REF. NO.	DESCRIPTION	PART NO.	KD-55X7005D	XBR-55X700D			XBR-55X705D				XBR-55X707D
			DESTINATION	DESTINATION			DESTINATION				DESTINATION
			BR6	UC2	LA1	AR4	CR1	LA8	ECU	CO1	
1	LABEL, REAR TERMINAL (PDT)	4-585-154-01	n/a	•	•	•	•	•	•	•	
1	LABEL, REAR TERMINAL (PDT)	4-585-155-01	•	n/a	•	•	•	•	•	•	
2	LABEL, SIDE TERMINAL(PDT)	4-581-504-01	n/a	•	•	n/a	n/a	n/a	n/a	n/a	
2	LABEL, SIDE TERMINAL(PDT)	4-581-504-51	•	n/a	n/a	•	•	•	•	•	
3	CLAMPER, CABLE	4-262-708-04	•	•	•	•	•	•	•	•	
4	AC COVER	4-299-531-01	n/a	•	•	•	•	•	•	•	
4	AC COVER	4-297-989-01	•	n/a	n/a	n/a	n/a	n/a	n/a	n/a	
5	POWER-SUPPLY CORD (WITH CONN.)	1-839-691-12	n/a	n/a	n/a	n/a	•	•	•	n/a	
5	POWER SUPPLY CORD (WITH CONN)	1-846-001-12	•	n/a	n/a	n/a	n/a	n/a	n/a	n/a	
5	POWER-SUPPLY CORD (WITH CONN)	1-848-821-11	n/a	n/a	n/a	•	n/a	n/a	n/a	n/a	
5	POWER-SUPPLY CORD (WITH CONN.)	1-849-274-11	n/a	•	•	n/a	n/a	n/a	n/a	•	
6	COVER, REAR (L JDE) A	4-591-835-11	n/a	•	•	•	•	•	•	n/a	
6	COVER, REAR (L JDE) A	4-591-835-01	n/a	n/a	n/a	n/a	n/a	n/a	n/a	•	
6	COVER, REAR (L JDE) A	A-2125-512-A	•	n/a	n/a	n/a	n/a	n/a	n/a	n/a	
7	SPEAKER BOX ASSY (L)	1-858-963-51	•	•	•	•	•	•	•	•	
8	SPEAKER BOX ASSY (R)	1-858-963-61	•	•	•	•	•	•	•	•	
9	SWITCH UNIT (3M-P)	1-474-647-11	n/a	•	•	•	•	•	•	•	
9	SWITCH UNIT ASSY (3M-P-KIT)	A-2115-714-A	•	n/a	n/a	n/a	n/a	n/a	n/a	n/a	
10	HOLDER SIDE SW(JDE)	4-582-345-01	•	•	•	•	•	•	•	•	
11	BT ANTENNA	1-754-950-11	•	•	•	•	•	•	•	•	
12	BRACKET, TOP FL (MOLD)	4-546-441-11	n/a	n/a	n/a	n/a	n/a	n/a	n/a	•	
13	BRACKET, SIDE (JDE)	4-579-724-11	n/a	•	•	n/a	n/a	n/a	n/a	n/a	
13	BRACKET, SIDE (JDE)	4-579-724-21	n/a	n/a	n/a	•	•	•	•	•	
13	BRACKET, SIDE (JDE)	4-579-724-51	•	n/a	n/a	n/a	n/a	n/a	n/a	n/a	
14	UNIVERSAL SIL-TU SUT-DB243ZP	8-594-307-00	n/a	n/a	n/a	n/a	n/a	n/a	n/a	•	
14	UNIVERSAL SIL-TU SUT-RA243ZP	8-594-302-00	n/a	•	•	n/a	n/a	n/a	n/a	n/a	
14	UNIVERSAL SIL-TU SUT-RT243ZP	8-594-308-00	•	n/a	n/a	•	•	•	•	n/a	
15	COMPL SVC BFM_BR	A-2103-815-A	•	n/a	n/a	n/a	n/a	n/a	n/a	n/a	
15	COMPL SVC BFM_CO_CI	A-2094-461-A	n/a	n/a	n/a	n/a	n/a	n/a	n/a	•	
15	COMPL SVC BFM_IN_I	A-2094-466-A	n/a	n/a	•	n/a	n/a	n/a	n/a	n/a	
15	COMPL SVC BFM_LAAR_GINGA	A-2144-168-A	n/a	n/a	n/a	•	•	n/a	•	n/a	
15	COMPL SVC BFM_LA_G	A-2094-462-A	n/a	n/a	n/a	n/a	n/a	•	n/a	n/a	
15	COMPL SVC BFM_UC_I_S	A-2094-463-A	n/a	•	n/a	n/a	n/a	n/a	n/a	n/a	
16	SHEET, INSULATION(HRN L)	4-565-059-11	•	•	•	•	•	•	•	•	
17	GL6(BR)-STATIC CONVERTER (TV)	A-2126-042-A	•	n/a	n/a	n/a	n/a	n/a	n/a	n/a	
17	GL6(CH)-STATIC CONVERTER(TV)	1-474-633-21	n/a	•	•	•	•	•	•	•	
18	BRACKET, SP L (L SWN)A	4-570-851-01	n/a	•	•	•	•	•	•	•	
18	BRACKET, SP L (L SWN) A	A-2125-513-A	•	n/a	n/a	n/a	n/a	n/a	n/a	n/a	
19	BRACKET, SP R (L SWN)A	4-570-852-01	n/a	•	•	•	•	•	•	•	
19	BRACKET, SP R (L SWN)A	A-2125-514-A	•	n/a	n/a	n/a	n/a	n/a	n/a	n/a	
20	PACKING (L JDE_OS) PANEL SVC	A-2143-322-A	•	•	•	•	•	•	•	•	
	<SMARTCORE>										
51	BRACKET, WIFI	4-547-397-02	•	•	•	•	•	•	•	•	
52	WLAN/BTMODULE(11AC)	1-458-912-11	n/a	•	•	•	•	•	•	•	
52	WLAN/BTMODULE(11AC)BRZ	1-458-912-21	•	n/a	n/a	n/a	n/a	n/a	n/a	n/a	
53	COVER, TOP	4-547-395-01	•	•	•	•	•	•	•	•	
54	PANEL, ORNAMENT	4-547-389-01	•	•	•	•	•	•	•	•	
55	LIGHT, GUIDE	4-547-390-01	•	•	•	•	•	•	•	•	
56	HSC3_L MOUNT	A-2066-086-A	•	•	•	•	•	•	•	•	
56	HSC3_L_PONR MOUNT	A-2091-154-A	•	•	•	•	•	•	•	•	
57	CASE, BOTTOM (LL)	4-588-915-01	•	•	•	•	•	•	•	•	
	<STAND>										
71	STAND, NECK ASSY (L JDE)	4-589-099-01	n/a	•	•	•	•	•	•	•	
71	STAND, NECK ASSY (L JDE)	A-2125-509-A	•	n/a	n/a	n/a	n/a	n/a	n/a	n/a	
72	STAND, SHAFT (L JDE) A	4-585-539-01	n/a	•	•	•	•	•	•	•	
72	STAND, SHAFT (L JDE) A	A-2125-510-A	•	n/a	n/a	n/a	n/a	n/a	n/a	n/a	

### 3-2. KD-55X7\*D, XBR-55X7\*D

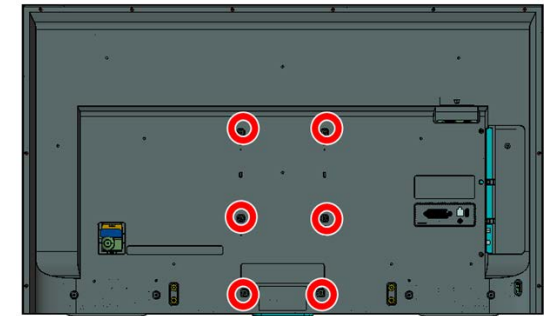
#### 3-2-2. Screws



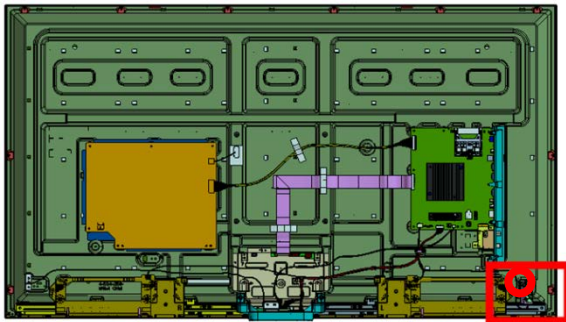
Description	Part No
SCREW M3X3.0 STEP	4-579-926-01



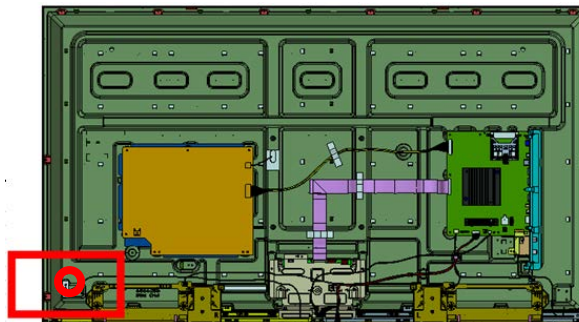
Description	Part No
SCREW, +BVTP 4X12 TYPE2 IT-3	2-580-639-01



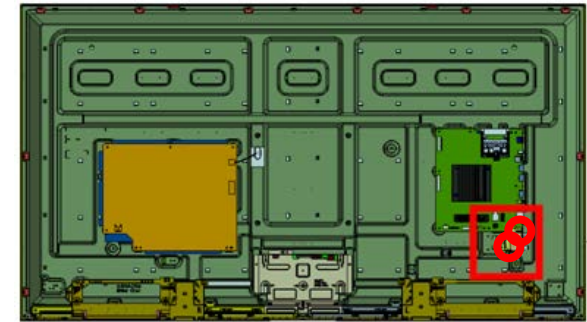
Description	Part No
SCREW, +PSW M4X10	4-159-298-01



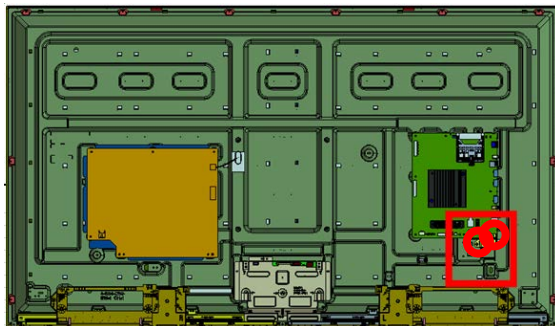
Description	Part No
SCREW M3X3.0 STEP	4-579-926-01



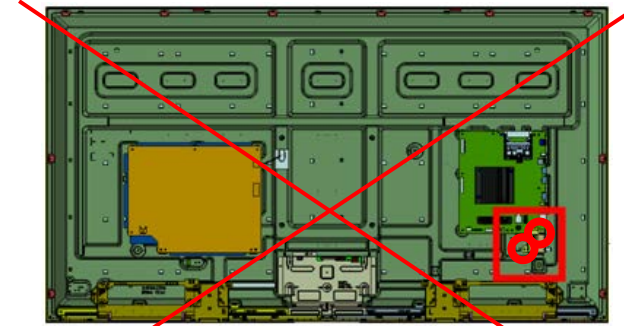
Description	Part No
SCREW +PSW, M3X6 W8	4-472-518-11



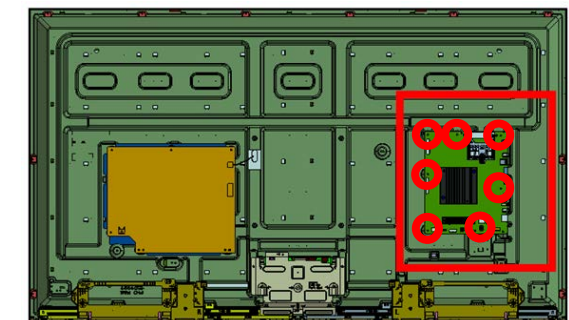
Description	Part No
SCREW +PSW, M3X6 W8	4-472-518-11



Description	Part No
SCREW +PSW, M3X6 W8	4-472-518-11



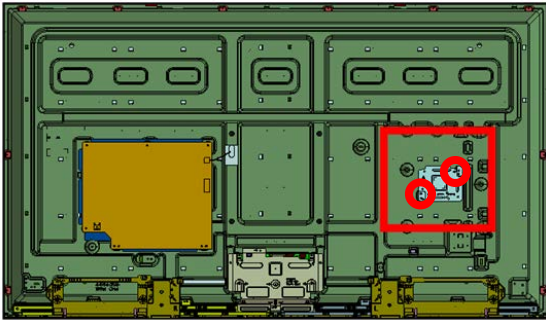
Description	Part No
SCREW, +PSW M4X10	4-159-298-01



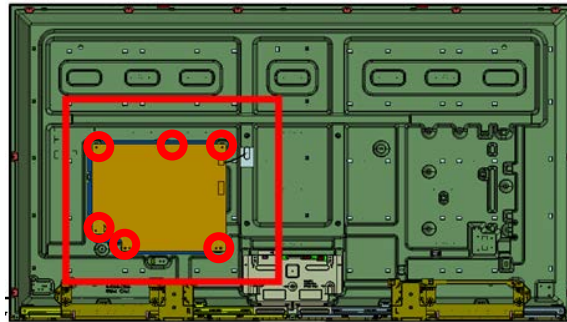
Description	Part No
SCREW +PSW, M3X6 W8	4-472-518-11

3-2. KD-55X7\*D, XBR-55X7\*D

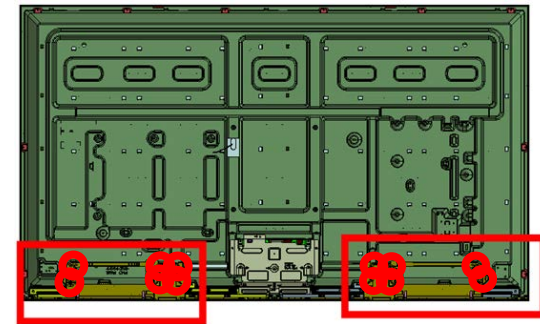
3-2-2. Screws



Description	Part No
SCREW +PSW M3x6 W8	4-472-518-11



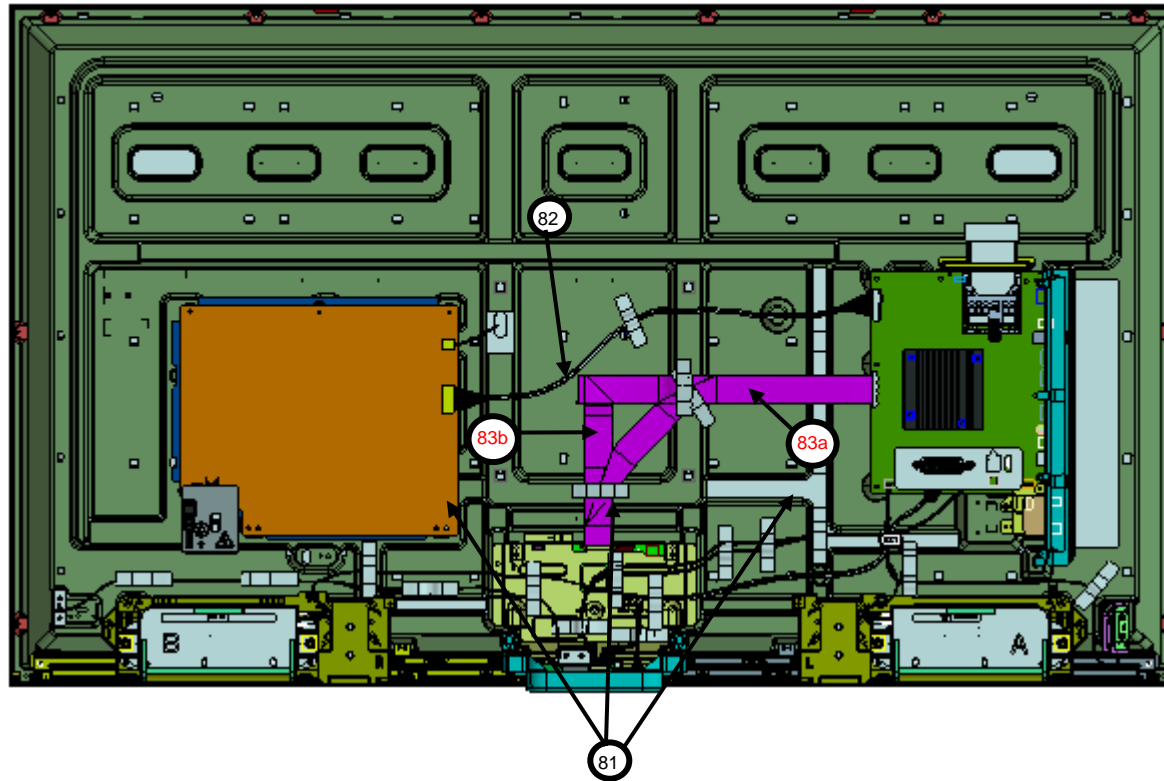
Description	Part No
SCREW, +PSW M3X6 W 12	4-256-393-12



Description	Part No
SCREW, +PSW M3X8	2-580-593-01

3-2. KD-55X7\*D, XBR-55X7\*D

3-2-3. Connectors



REF. NO.	DESCRIPTION	PART NO.	REMARK	KD-55X7005D	XBR-55X700D	XBR-55X705D			XBR-55X707D		
				DESTINATION	DESTINATION	DESTINATION			DESTINATION		
				BR6	UC2	LA1	AR4	CR1	LA8	ECU	CO1
81	HARNESS ASSY	1-910-805-74	(CN1000(BFM)-CN1001(BFM)-CN203(SM)-CN001(HSC3_L)-WIFI/BT/CN3202(BFM)-SP(1))	•	•	•	•	•	•	•	•
82	CONNECTOR ASSY 30P	1-910-805-75	(CN400(BFM)-CN6401(GL6)(1))	•	•	•	•	•	•	•	•
83(a)	FLEXIBLE FLAT CABLE 51P	1-849-468-11	(CN3800(BFM)-T-CON(1))(Priority usage, BM Code 11)	•	•	•	•	•	•	•	•
83(b)	FLEXIBLE FLAT CABLE 51P	1-849-471-11	(CN3800(BFM)-T-CON(1))	•	•	•	•	•	•	•	•

**3-2. KD-55X7\*D, XBR-55X7\*D**

**3-2-4. Other Parts**

REF. NO.	DESCRIPTION	PART NO.	KD-55X7005D	XBR-55X700D			XBR-55X705D				XBR-55X707D
			DESTINATION	DESTINATION			DESTINATION				DESTINATION
			BR6	UC2	LA1	AR4	CR1	LA8	ECU	CO1	
	ADAPTOR, CONVERSION	1-785-504-21	n/a	n/a	n/a	n/a	•	•	•	n/a	
	ADHESIVE (SV380C) 333CC GRY	* 7-600-040-44	•	•	•	•	•	•	•	•	
	BADGE, XBR LOGO(H3.7)	4-535-586-02	•	•	•	•	•	•	•	•	
	HEADER ASSEMBLY FOR PWB 3P	1-822-693-11	•	n/a	n/a	n/a	n/a	n/a	n/a	n/a	
	HEAT SINK(MUFF2 C)	* 4-584-547-01	•	•	•	•	•	•	•	•	
	HOLDER(HS MUF)	* 4-549-188-01	•	•	•	•	•	•	•	•	
	HOLDER, HS WS (MUF)	* 4-548-743-01	•	•	•	•	•	•	•	•	
	IR BLASTER CABLE	1-849-161-11	n/a	•	•	n/a	n/a	n/a	n/a	n/a	
	JOINT	* 2-639-807-12	•	n/a	n/a	n/a	n/a	n/a	n/a	n/a	
	RCA CONVERSION CABLE	* 1-848-803-12	n/a	•	•	•	•	•	•	•	
	REMOTE COMMANDER (RMT-TX200B)	1-493-160-11	n/a	n/a	n/a	•	•	•	•	•	
	REMOTE COMMANDER (RMT-TX200B)	1-493-160-21	•	n/a	n/a	n/a	n/a	n/a	n/a	n/a	
	REMOTE COMMANDER (RMT-TX200U)	1-493-159-11	n/a	•	•	n/a	n/a	n/a	n/a	n/a	
	SCREW, +PSW M5X12	2-580-607-01	•	•	•	•	•	•	•	•	
	SCREW,+PSW M3X10(SPECIAL NECK)	4-151-153-21	•	n/a	n/a	n/a	n/a	n/a	n/a	n/a	
	STOPPER (A)	3-674-673-22	n/a	•	•	•	•	•	•	•	
	TAPE (3M 1350FB-1)15MMX66M BLK	7-600-031-97	•	•	•	•	•	•	•	•	
	TAPE (3M 1350FW-1)15MMX66M WHT	7-600-031-96	n/a	•	•	•	•	•	•	•	
	SHEET, THERMAL(BM)	4-549-186-01	•	•	•	•	•	•	•	•	
	TR TK8A50D	6-552-496-01	•	n/a	n/a	n/a	n/a	n/a	n/a	n/a	

