

# WF-1000X

## BC-WF1000X/WF-1000XL/1000XR

# SERVICE MANUAL

Ver. 1.0 2017.08

US Model  
Canadian Model  
AEP Model  
UK Model  
E Model  
Australian Model  
Chinese Model  
Tourist Model



Photo: BC-WF1000X



Photo: WF-1000XL (L-ch)



Photo: WF-1000XR (R-ch)

- All of the units included in the WF-1000X (WF-1000XL/WF-1000XR/BC-WF1000X) are required to repairing of this unit. Check in advance that you have all of the units.

### COMPONENT MODEL NAME (WF-1000X)

Wireless noise canceling stereo headset	L-ch	WF-1000XL
	R-ch	WF-1000XR
Charging case	BC-WF1000X	

#### General

**Communication system:** BLUETOOTH Specification version 4.1  
**Output:** BLUETOOTH Specification Power Class 1  
**Maximum communication range:** Line of sight approx. 10 m (30 ft)<sup>1)</sup>  
**Frequency band:** 2.4 GHz band (2.4000 GHz - 2.4835 GHz)  
**Operating frequency:** BLUETOOTH 2.400 MHz - 2.483.5 MHz  
NFC 13.56 MHz  
**Maximum output power:** BLUETOOTH < 20.0 dBm  
NFC < 60 dBμA/m at 10 m  
**Compatible BLUETOOTH profiles:**  
A2DP (Advanced Audio Distribution Profile)  
AVRCP (Audio Video Remote Control Profile)  
HFP (Hands-free Profile)  
HSP (Headset Profile)  
**Supported Codec:** SBC<sup>2)</sup>, AAC<sup>3)</sup>  
**Supported content protection method:** SCMS-T

**Transmission range (A2DP):** 20 Hz - 20,000 Hz (Sampling frequency 44.1 kHz)

**Included items:**  
Wireless noise canceling stereo headset (1)  
Micro-USB cable (approx. 50 cm (19 3/4 in.)) (1)  
Charging case (1)  
Long Hybrid silicone rubber earbuds (S/S/M/L 2 each)  
Triple-comfort earbuds (S/M/L 2 each)  
Fitting supporters (M/L 2 each)  
Reference Guide (1)  
Operating Instructions (1)  
Other documents (1 set)

- The actual range will vary depending on factors such as obstacles between devices, magnetic fields around a microwave oven, static electricity, reception sensitivity, antenna's performance, operating system, software application, etc.
- BLUETOOTH standard profiles indicate the purpose of BLUETOOTH communications between devices.
- Codec: Audio signal compression and conversion format
- Subband Codec
- Advanced Audio Coding

### SPECIFICATIONS

#### Wireless noise canceling stereo headset

**Power source:**  
DC 3.7 V: Built-in lithium-ion rechargeable battery  
DC 5 V: When charged using USB  
**Mass:** Approx. 6.8 g (0.24 oz) (Headset)  
Approx. 70 g (2.5 oz) (Charging case)  
**Operating temperature:** 0 °C to 40 °C (32 °F to 104 °F)  
**Rated power consumption (AEP, UK):** 1 W (Headset), 3 W (Charging case)  
**Usage hours:**  
When connecting via the BLUETOOTH device  
Music playback time:  
Max. 3 hours (NC ON), Max. 3 hours (NC OFF)  
Communication time:  
Max. 3.5 hours  
Standby time:  
Max. 8 hours (NC ON), Max. 35 hours (NC OFF)  
Note: Usage hours may be shorter depending on the Codec and the conditions of use.  
**Charging time:**  
Approx. 1.5 hours  
(About 70 minutes of music playback is possible after 15 minutes charging.) (Headset)  
Approx. 3 hours (Charging case)  
Note: Charging hours may be different depending on the conditions of use.

**Charging temperature:** 5 °C to 35 °C (41 °F to 95 °F)

#### Receiver

**Type:** Closed, Dynamic  
**Driver unit:** 6 mm

#### Microphone

**Type:** Electret condenser  
**Directivity:** Omni directional  
**Effective frequency range:** 50 Hz - 8,000 Hz

#### System requirements for battery charge using USB

(As of August 2017)  
Personal Computer with pre-installed with any of the following operating systems and USB port:

**Operating Systems**  
(when using Windows)  
Windows® 10 Home / Windows® 10 Pro  
Windows® 8.1 / Windows® 8.1 Pro  
Windows® 8 / Windows® 8 Pro  
Windows® 7  
Home Basic / Home Premium / Professional / Ultimate

(when using Mac)  
Mac OS X (version 10.9 or later)  
Design and specifications are subject to change without notice.

The Bluetooth® word mark and logos are registered trademarks owned by the Bluetooth SIG, Inc. and any use of such marks by Sony Corporation is under license.

The N-Mark is a trademark or registered trademark of NFC Forum, Inc. in the United States and in other countries.

Windows is a registered trademark or trademark of Microsoft Corporation in the United States and/or other countries.

Mac, OS X, iPhone and iPod touch are trademarks of Apple Inc., registered in the U.S. and other countries.

"Made for iPod" and "Made for iPhone" mean that an electronic accessory has been designed to connect specifically to iPod or iPhone, respectively, and has been certified by the developer to meet Apple performance standards. Apple is not responsible for the operation of this device or its compliance with safety and regulatory standards. Please note that the use of this accessory with iPod or iPhone may affect wireless performance.

Android is a trademark of Google Inc. Other trademarks and trade names are those of their respective owners.

#### CAUTION

Danger of explosion if battery is incorrectly replaced. Replace only with the same or equivalent type.

#### 注意

如果電池更換不當會有爆炸危險  
只能用同樣類型或等效類型的電池來更換

#### 警告

本電池如果更換不正確會有爆炸的危險  
請依製造商說明書處理用過之電池

WF-1000X/1000XL/1000XR

# WIRELESS NOISE CANCELING STEREO HEADSET

BC-WF1000X

# CHARGING CASE

9-896-429-01

2017H33-1

© 2017.08

Sony Video & Sound Products Inc.

# SONY

## SECTION 1 SERVICING NOTES

The **SERVICING NOTES** contains important information for servicing. Be sure to read this section before repairing the unit.

### DESTINATION ABBREVIATIONS

The following abbreviations for model destinations are used in this service manual.

- Abbreviations
  - AEP : European, East European, CIS area (Moldova) and Middle East area (Israel) models
  - AUS : Australian and New Zealand models
  - CH : Chinese model
  - CND : Canadian model
  - JE : Tourist model
  - LA : Latin American model
  - RU : CIS area (Except for Moldova) model

### COLOR VARIATIONS

- (B) Black
- (N) Champagne Gold

### ADVANCE PREPARATION WHEN REPAIRING

All of the units included in the WF-1000X (WF-1000XL/WF-1000XR/BC-WF1000X) are required to repairing of this unit. Check in advance that you have all of the units.

### OPERATION CHECK OF THE NFC AFTER COMPLETING THE REPAIRS

After completing the repairs of this unit, follow the procedure below to check normal operation of the NFC.

**Note:** After checking of NFC operation, be sure to delete the pairing information before returning this unit to the customer. For deleting method of the pairing information, refer to “INITIALIZING METHOD” on page 3.

#### Preparation:

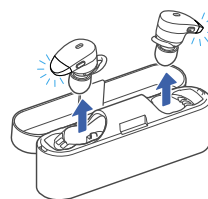
- NFC compatible device (smartphone or music player etc.)

#### Procedure:

1. Turn on the NFC function of the device.



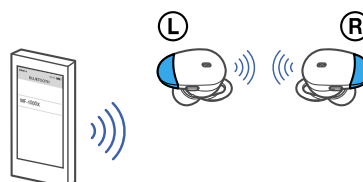
2. Remove the WF-1000XL (L-ch) and WF-1000XR (R-ch), from the BC-WF1000X (charging case).



3. Touch the N-mark part of the device to the N-mark part of the BC-WF1000X (charging case).



4. Playback the audio from the device and check that the sound is outputted from WF-1000XL (L-ch) and WF-1000XR (R-ch).



5. Touch the N-Mark part of the BC-WF1000X (charging case) with N-Mark of the device again to disconnect the connection.

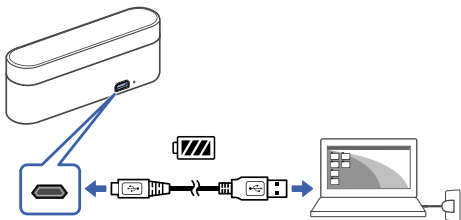
**RESET METHOD**

When resetting this unit, this unit to set charging state. When it is charged state, this unit is reset automatically.

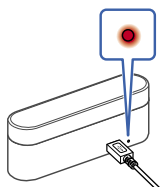
**Note:** Even if this work is performed, device pairing information is not deleted.

**Procedure:**

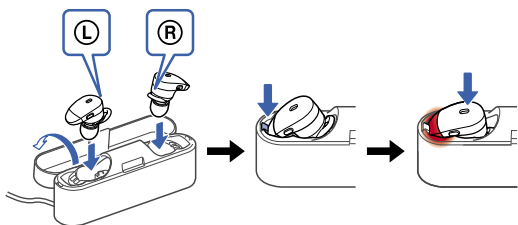
1. Connect BC-WF1000X (charging case) to a booted PC using the supplied micro-USB cable.



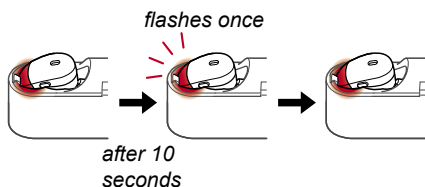
2. Check that the charging lamp of the BC-WF1000X (charging case) lights up.



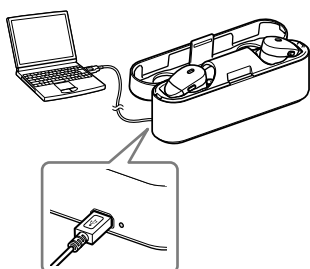
3. Open the lid of the BC-WF1000X (charging case), insert WF-1000XL (L-ch) and WF-1000XR (R-ch), and check that the lamp is lit as shown below figure.



4. After insert WF-1000XL (L-ch) and WF-1000XR (R-ch) in BC-WF1000X (charging case), about 10 seconds have elapsed, the red lamp flashes once and the reset is completed automatically.



**Connection completion figure (for reference):**



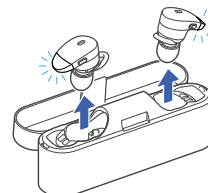
**INITIALIZING METHOD**

After completion of repairs, be sure to perform the following procedure to initialize this unit.

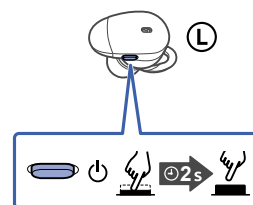
**Note 1:** When this work is performed, all device pairing information is deleted and settings return to factory defaults.

**Procedure:**

1. Remove the WF-1000XL (L-ch) and WF-1000XR (R-ch), from the BC-WF1000X (charging case).



2. Press the button on the WF-1000XL (L-ch) for more than 2 seconds to turn the power off.

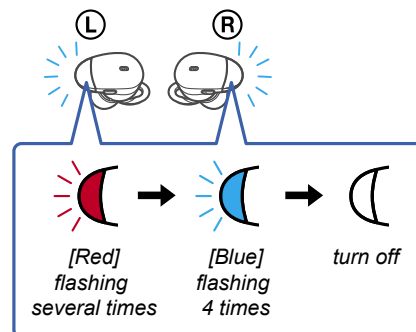


3. While the power is off, press the buttons of WF-1000XL (L-ch) and WF-1000XR (R-ch) simultaneously for more than 15 seconds as it is.



**Note 2:** While the buttons are pressing, the lamp of WF-1000XL (L-ch) is flashes in the middle, but keep pressing for more than 15 seconds as it is.

4. When the lamps of WF-1000XL (L-ch) and WF-1000XR (R-ch) are switched from flashing red several times to flashing blue 4 times and the lamps are turn off, pairing of WF-1000XL (L-ch) and WF-1000XR (R-ch) are completed.



**Note 3:** When this unit is initialized, it might not be able to connect to iPhone or PC. In that case, delete the registration of this unit on iPhone or PC, register the device again.

## REPAIRING AND REPLACING OF THE WF-1000XL (L-ch)

The WF-1000XL (L-ch) will be replaced in the state of the finished product. Cannot repairing and replacing of each component parts. Also, it is necessary to disassemble the bottom of the BC-WF1000X (charging case) and replace it at the same time.

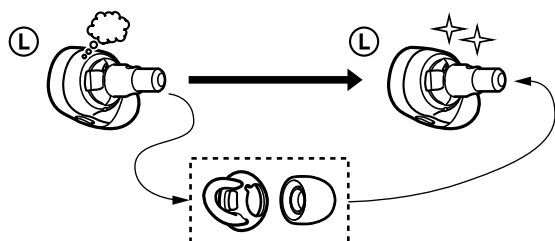
When replacing the WF-1000XL (L-ch), perform the following procedure to works.

### Check in advance:

- Check in advance that you have all of WF-1000XL (L-ch), WF-1000XR (R-ch) and BC-WF1000X (charging case).
- Be sure to check that there are no WF-1000X in the surroundings. If using WF-1000X in the surroundings, there is a possibility that is connect another WF-1000X.

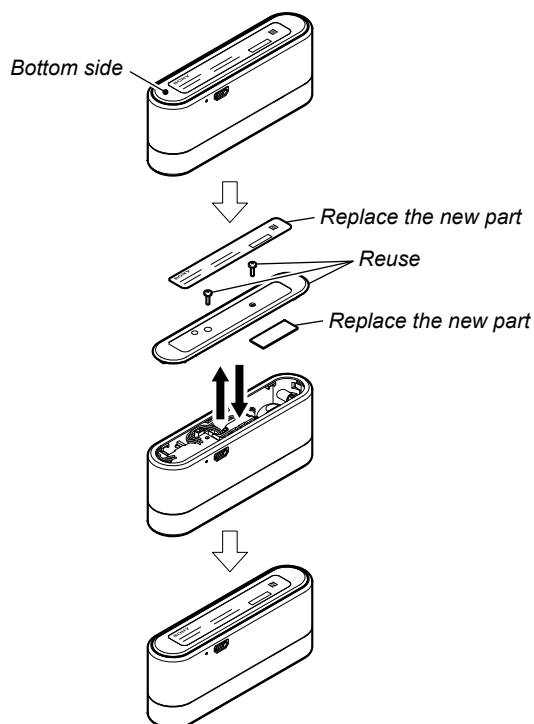
### Replacing procedure:

1. Replace the broken WF-1000XL (L-ch) with a new WF-1000XL (L-ch).



**Note 1:** Change the Long Hybrid silicone rubber earbud and the Fitting supporter to new WF-1000XL (L-ch).

2. Refer to “2. DISASSEMBLY” on page 12, remove the bottom part of the BC-WF1000X (charging case) and replace the CRADLE NFC board and model number label with new parts.



**Note 2:** New WF-1000XL (L-ch) is supplied as a unit of new CRADLE NFC board (with sheet (NFC)) and new model number label together.

**Note 3:** Reuse two screws and plate (bottom). Please replace with new parts only when it cannot be reused.

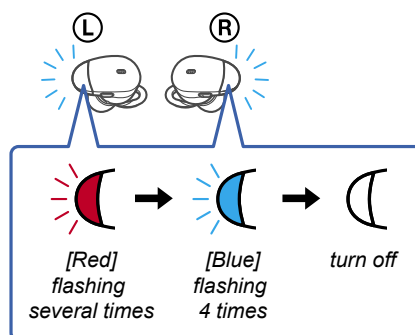
3. While the power is off, press the buttons of WF-1000XL (L-ch) and WF-1000XR (R-ch) simultaneously for more than 15 seconds as it is.



**Note 4:** If the power is on, press the [⏻] button on the WF-1000XL (L-ch) for more than 2 seconds to turn the power off.

**Note 5:** While the buttons are pressing, the lamp of WF-1000XL (L-ch) is flashes in the middle, but keep pressing for more than 15 seconds as it is.

4. When the lamps of WF-1000XL (L-ch) and WF-1000XR (R-ch) are switched from flashing red several times to flashing blue 4 times and the lamps are turn off, pairing of WF-1000XL (L-ch) and WF-1000XR (R-ch) are completed.



**Note 6:** When perform the this operation, it might not be able to connect to iPhone or PC.

In that case, delete the registration of this unit on iPhone or PC, register the device again.

5. Check the operation of this unit and complete replacement works.

**REPAIRING AND REPLACING OF THE WF-1000XR (R-ch)**

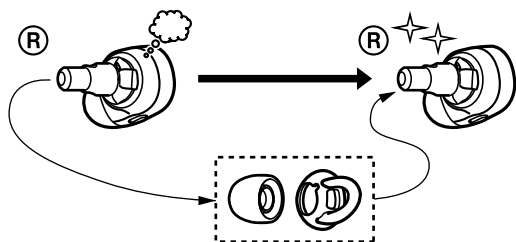
The WF-1000XR (R-ch) will be replaced in the state of the finished product. Cannot repairing and replacing of each component parts. When replacing the WF-1000XR (R-ch), perform the following procedure to works.

**Check in advance:**

- Check in advance that you have all of WF-1000XL (L-ch), WF-1000XR (R-ch) and BC-WF1000X (charging case).
- Be sure to check that there are no WF-1000X in the surroundings. If using WF-1000X in the surroundings, there is a possibility that is connect another WF-1000X.

**Replacing procedure:**

1. Replace the broken WF-1000XR (R-ch) with a new WF-1000XR (R-ch).



**Note 1:** Change the Long Hybrid silicone rubber earbud and the Fitting supporter to new WF-1000XR (R-ch).

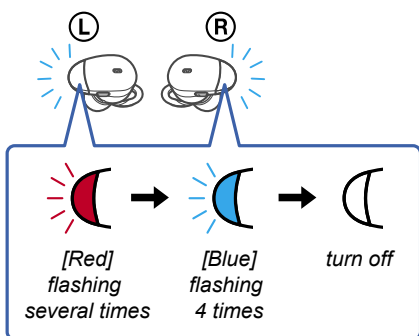
2. While the power is off, press the buttons of WF-1000XL (L-ch) and WF-1000XR (R-ch) simultaneously for more than 15 seconds as it is.



**Note 2:** If the power is on, press the [⏻] button on the WF-1000XL (L-ch) for more than 2 seconds to turn the power off.

**Note 3:** While the buttons are pressing, the lamp of WF-1000XL (L-ch) is flashes in the middle, but keep pressing for more than 15 seconds as it is.

3. When the lamps of WF-1000XL (L-ch) and WF-1000XR (R-ch) are switched from flashing red several times to flashing blue 4 times and the lamps are turn off, pairing of WF-1000XL (L-ch) and WF-1000XR (R-ch) are completed.



**Note 4:** When perform the this operation, it might not be able to connect to iPhone or PC. In that case, delete the registration of this unit on iPhone or PC, register the device again.

4. Check the operation of this unit and complete replacement works.

**REPAIRING AND REPLACING OF THE BC-WF1000X (Charging case)**

The BC-WF1000X (charging case) will be replaced in the state of the finished product. Cannot repairing and replacing of each component parts.

When replacing the BC-WF1000X (charging case), perform the following procedure to works.

**Check in advance:**

- Check in advance that you have all of WF-1000XL (L-ch), WF-1000XR (R-ch) and BC-WF1000X (charging case).
- Be sure to check that there are no WF-1000X in the surroundings. If using WF-1000X in the surroundings, there is a possibility that is connect another WF-1000X.

**Preparation:**

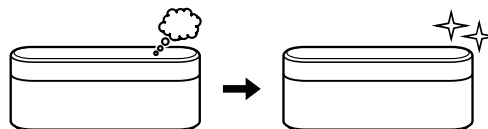
- Windows PC with Bluetooth function
- NFC compatible smartphone that installed the NFC Tag Data Writing Application

**Note 1:** For the NFC Tag Data Writing Application, refer to “BLUETOOTH INFORMATION WRITING METHOD” on page 7.

**Note 2:** Confirm the method of obtaining the NFC Tag Data Writing Application and its latest version with the each service headquarters.

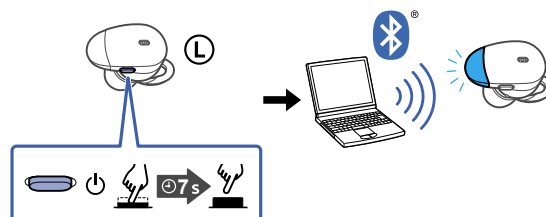
**Replacing procedure:**

1. Replace the broken BC-WF1000X (charging case) with a new BC-WF1000X (charging case).



2. Press the [⏻] button of the WF-1000XL (L-ch) for more than 7 seconds to pairing state, and connect it to the PC with Bluetooth function.

(In order to check the Bluetooth address, it is necessary to connect the PC and the WF-1000XL (L-ch). It is also possible to display the Bluetooth address, by the Bluetooth connect to the walkman (NW-S series or NW-A series etc.) with Bluetooth function. In this example, describes how to display Bluetooth address on PC.)



**Note 3:** For the Bluetooth connection method of the PC, refer to the manual of the PC to be used.

– Continued on next page –

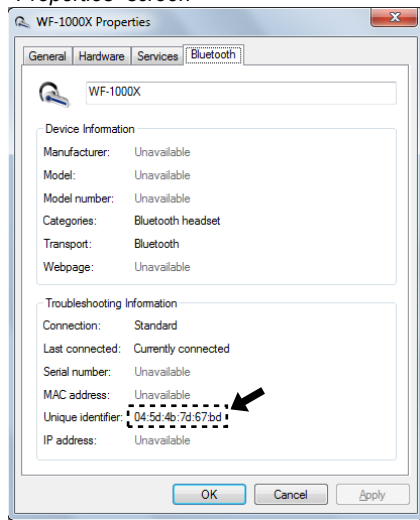
3. Display information of this unit Bluetooth connected on the PC screen. Then open the property, display the Bluetooth address of this unit, and take a memorandum the Bluetooth address.  
(In the Windows 8.1, open the “Control Panel → Device and Printers” in this order, right click the icon showing the model name (WF-1000X) of this unit and open its properties)

“Device and Printers” screen on PC



Right click and select the “Properties”.

“Properties” screen



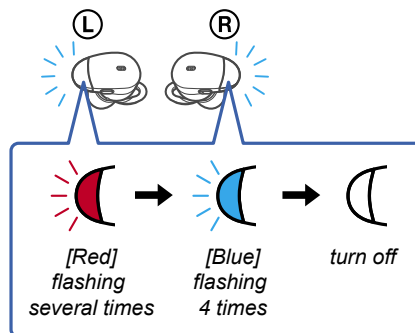
- Note 4:** Check the device name carefully so as not to confuse Bluetooth address with other devices, and take a memorandum.
- Note 5:** The display method of Bluetooth address may be different depending on Windows OS.

4. Write the Bluetooth information to the BC-WF1000X (charging case) using smartphone that installed the NFC Tag Data Writing Application.  
(Refer to “BLUETOOTH INFORMATION WRITING METHOD” on page 7)
5. While the power is off, press the buttons of WF-1000XL (L-ch) and WF-1000XR (R-ch) simultaneously for more than 15 seconds as it is.



- Note 6:** If the power is on, press the [P] button on the WF-1000XL (L-ch) for more than 2 seconds to turn the power off.
- Note 7:** While the buttons are pressing, the lamp of WF-1000XL (L-ch) is flashes in the middle, but keep pressing for more than 15 seconds as it is.

6. When the lamps of WF-1000XL (L-ch) and WF-1000XR (R-ch) are switched from flashing red several times to flashing blue 4 times and the lamps are turn off, pairing of WF-1000XL (L-ch) and WF-1000XR (R-ch) are completed.



- Note 8:** When perform the this operation, it might not be able to connect to iPhone or PC.  
In that case, delete the registration of this unit on iPhone or PC, register the device again.
7. Check the operation of this unit and complete replacement works.

**BLUETOOTH INFORMATION WRITING METHOD**

When the BC-WF1000X (charging case) is replaced, the writing of Bluetooth information is necessary. Write the Bluetooth information according to the procedure below.

**Preparation:**

- Windows PC with Bluetooth function
- NFC compatible smartphone that installed the file manager application (ASTRO File Manager, File Expert, etc.)
- USB cable for the smartphone
- NFC Tag Data Writing Application  
(Application name: mdr-nfc-tag-writer\_1.0.0.apk)

**Note 1:** “1.0.0” in the file name indicates the version of NFC Tag Data Writing Application. Always use the latest version of the NFC Tag Data Writing Application.

Example: mdr-nfc-tag-writer\_1.0.0.apk  
└── version

**Note 2:** Confirm the method of obtaining the NFC Tag Data Writing Application and its latest version with the each service headquarters.

**Notes on the use of the NFC Tag Data Writing Application**

- The NFC Tag Data Writing Application may be updated irregularly. Always use the latest version of the NFC Tag Data Writing Application. The version of NFC Tag Data Writing Application is represented by the file name of NFC Tag Data Writing Application.  
 Example: mdr-nfc-tag-writer\_1.0.0.apk  
└── version
- Be sure to uninstall older versions of the NFC Tag Data Writing Application before installing the latest version.
- The NFC Tag Data Writing Application is also used in models other than the headphone category, and there are multiple types. If multiple NFC Tag Data Writing Applications are installed on a smartphone, do not launch more than one at the same time.
- The NFC Tag Data Writing Application varies depending on your model. Be sure to use the specified NFC Tag Data Writing Application.  
Use of not specified NFC Tag Data Writing Application is strictly prohibited.

**1. Installing the NFC Tag Data Writing Application for the Servicing**

Install the NFC Tag Data Writing Application on the smartphone for writing of Bluetooth information.

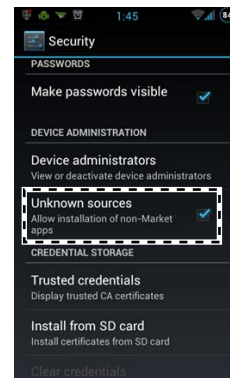
If the NFC Tag Data Writing Application is already installed, confirm the following.

- Be absolutely sure that the NFC Tag Data Writing Application supports your model.
- Confirm that the NFC Tag Data Writing Application is the latest version. The version of NFC Tag Data Writing Application is represented by the file name.  
 Example: mdr-nfc-tag-writer\_1.0.0.apk  
└── version

**Procedure:**

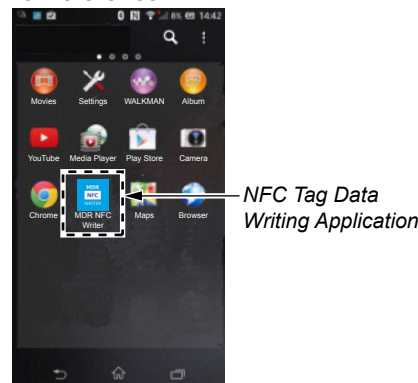
1. Prepare the NFC Tag Data Writing Application on the PC.  
**Note:** Be absolutely sure that the NFC Tag Data Writing Application supports your model.
2. Connect the smartphone to the PC with the USB cable.

3. Transfer the NFC Tag Data Writing Application to the smartphone.
4. When tapping the “Settings” → “Security” on the screen of the smartphone, check the box “Unknown sources”.



5. Disconnect the smartphone from the PC.
6. Use the file manager application to explore the NFC Tag Data Writing Application on the smartphone.
7. Click on the NFC Tag Data Writing Application to open it, and install the NFC Tag Data Writing Application to the smartphone.
8. When tapping the “Settings” → “Security” on the screen of the smartphone, uncheck the box “Unknown sources”.

**– Screen after the installation for reference –**



9. Confirm that the NFC Tag Data Writing Application is the latest version.

The version of NFC Tag Data Writing Application is represented by the file name.

Example: mdr-nfc-tag-writer\_1.0.0.apk  
└── version

## 2. Writing the NFC Tag Data

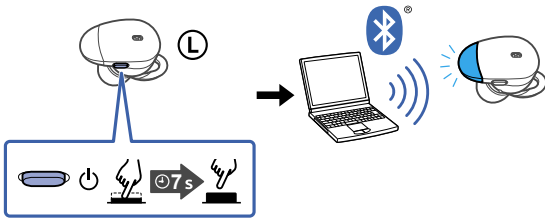
Write the NFC tag data (Bluetooth information) to the NFC module in the BC-WF1000X (charging case).

### Procedure:

1. Check the Bluetooth address (BD\_ADDR).

- ① Press the [L] button of the WF-1000XL (L-ch) for more than 7 seconds to pairing state, and connect it to the PC with Bluetooth function.

(In order to check the Bluetooth address, it is necessary to connect the PC and the WF-1000XL (L-ch). It is also possible to display the Bluetooth address, by the Bluetooth connect to the walkman (NW-S series or NW-A series etc.) with Bluetooth function. In this example, describes how to display Bluetooth address on PC.)

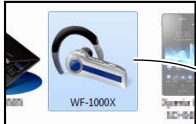


**Note 1:** For the Bluetooth connection method of the PC, refer to the manual of the PC to be used.

- ② Display information of this unit Bluetooth connected on the PC screen. Then open the property, display the Bluetooth address of this unit, and take a memorandum the Bluetooth address.

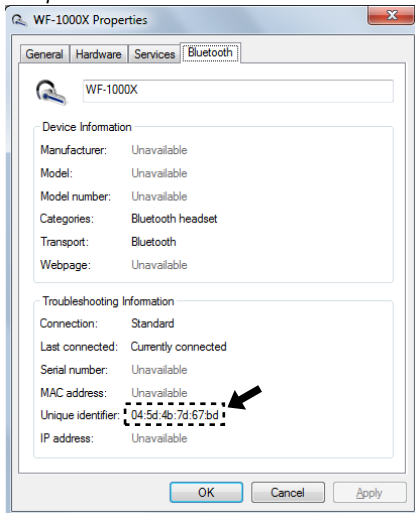
(In the Windows 8.1, open the “Control Panel → Device and Printers” in this order, right click the icon showing the model name (WF-1000X) of this unit and open its properties)

“Device and Printers” screen on PC



Right click and select the “Properties”.

“Properties” screen



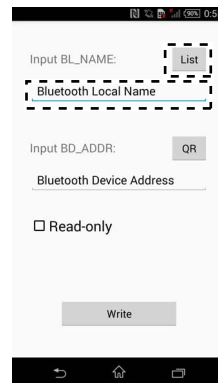
**Note 2:** Check the device name carefully so as not to confuse Bluetooth address with other devices, and take a memorandum.

**Note 3:** The display method of Bluetooth address may be different depending on Windows OS.

3. Start the NFC Tag Data Writing Application on the smartphone.
4. Tap the “Write” on the screen of the smartphone.



5. Input the Bluetooth Local Name (BL\_NAME). Tap the “List” on the screen of the smartphone and select the model name of the this unit, or input the model name with the keyboard on the smartphone.



6. Input the Bluetooth address (BD\_ADDR). Input the Bluetooth address (BD\_ADDR) that was checked by step 1 with the keyboard on the smartphone.

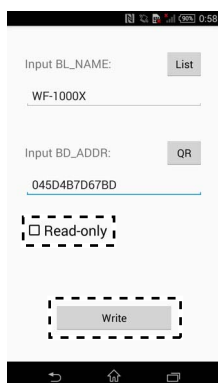
**Note 4:** “QR” is not used in this model.



– Continued on next page –

2. Turn on the NFC function of the smartphone.

7. Tap the “Write” on the screen of the smartphone, in the state that unchecked the box “Read-only”.

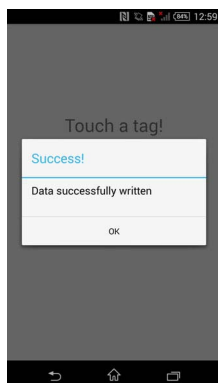


8. Touch the N-mark part of the smartphone to the N-mark part of the BC-WF1000X (charging case).



9. Check that “Success!” is displayed on the screen of the smartphone.

**Note 5:** When “Success!” is not displayed on the screen of the smartphone, refer to “3. Error Display” on page 10.



10. End the NFC Tag Data Writing Application on the smartphone.
11. Check the operation of connecting with the smartphone by one touch (NFC).  
(Refer to “OPERATION CHECK OF THE NFC AFTER COMPLETING THE REPAIRS” on page 2)
12. Start the NFC Tag Data Writing Application on the smartphone.

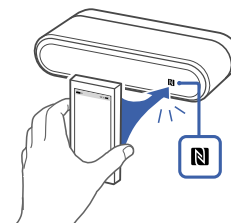
13. Tap the “Write” on the screen of the smartphone.



14. Check the box “Read-only” on the screen of the smartphone, and tap the “Write” on the screen of the smartphone.

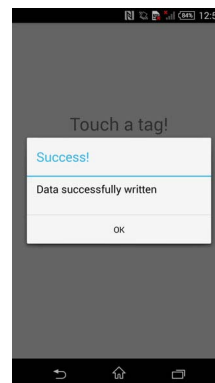


15. Touch the N-mark part of the smartphone to the N-mark part of the BC-WF1000X (charging case).



16. Check that “Success!” is displayed on the screen of the smartphone.

**Note 6:** When “Success!” is not displayed on the screen of the smartphone, refer to “3. Error Display” on page 10.

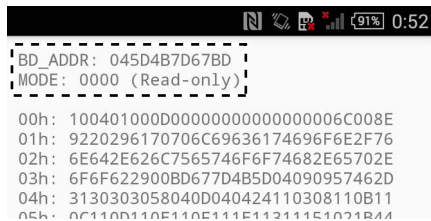


– Continued on next page –

17. Tap the “Read” on the screen of the smartphone.



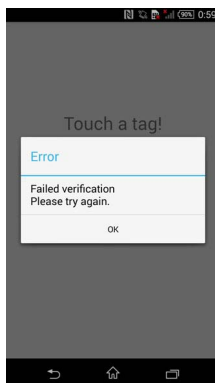
18. Check that “BD\_ADDR” on the screen of the smartphone accords with BD\_ADDR on the checked by step 1 and “MODE” on the screen of the smartphone is “0000 (Read-only)”.



19. End the NFC Tag Data Writing Application on the smartphone.  
 20. Check the operation of connecting with the smartphone by one touch (NFC).  
 (Refer to “OPERATION CHECK OF THE NFC AFTER COMPLETING THE REPAIRS” on page 2)

### 3. Error Display

When the writing of the NFC tag data has failed, “Error” is displayed on the screen of the smartphone.  
 When “Error” is displayed on the screen of the smartphone, operate according to the procedure below.



#### Procedure:

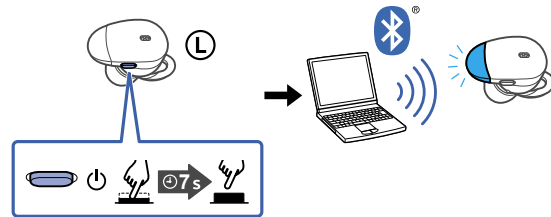
1. Tap the “Write” on the screen of the smartphone to write of the NFC tag data again.
2. When “Error” is displayed on the screen of the smartphone again, tap the “Read” on the screen of the smartphone.
3. Check that “MODE” on the screen of the smartphone is not “0000 (Read-only)”.
4. When “MODE” on the screen of the smartphone is “0000 (Read-only)”, execute the writing of the NFC tag data again after replacing the BC-WF1000X (charging case).  
 (When “MODE” on the screen of the smartphone is “0000 (Read-only)”, the writing of the NFC tag data cannot execute)

### 4. Check Method of the NFC Tag Data

Check the NFC tag data according to the procedure below.

#### Procedure:

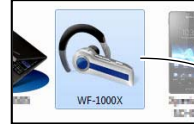
1. Check the Bluetooth address (BD\_ADDR).
  - ① Press the [L] button of the WF-1000XL (L-ch) for more than 7 seconds to pairing state, and connect it to the PC with Bluetooth function.  
 (In order to check the Bluetooth address, it is necessary to connect the PC and the WF-1000XL (L-ch). It is also possible to display the Bluetooth address, by the Bluetooth connect to the walkman (NW-S series or NW-A series etc.) with Bluetooth function. In this example, describes how to display Bluetooth address on PC.)



**Note 1:** For the Bluetooth connection method of the PC, refer to the manual of the PC to be used.

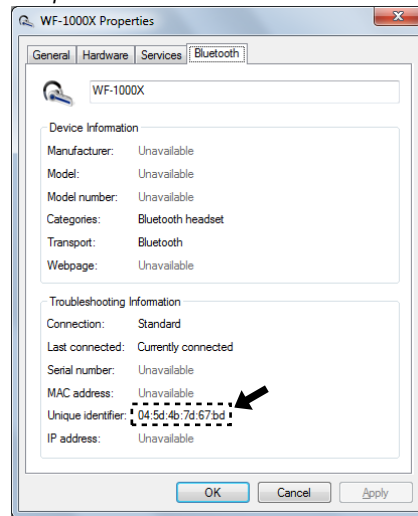
- ② Display information of this unit Bluetooth connected on the PC screen. Then open the property, display the Bluetooth address of this unit, and take a memorandum the Bluetooth address.  
 (In the Windows 8.1, open the “Control Panel → Device and Printers” in this order, right click the icon showing the model name (WF-1000X) of this unit and open its properties)

“Device and Printers” screen on PC



Right click and select the “Properties”.

“Properties” screen



**Note 2:** Check the device name carefully so as not to confuse Bluetooth address with other devices, and take a memorandum.

**Note 3:** The display method of Bluetooth address may be different depending on Windows OS.

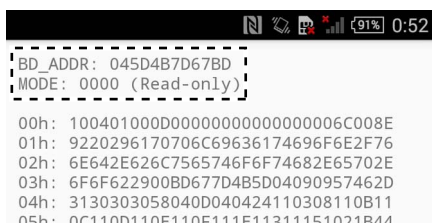
2. Turn on the NFC function of the smartphone.

– Continued on next page –

3. Start the NFC Tag Data Writing Application on the smartphone.
4. Tap the “Read” on the screen of the smartphone.



5. Check that “BD\_ADDR” on the screen of the smartphone accords with BD\_ADDR on the checked by step 1 and “MODE” on the screen of the smartphone is “0000 (Read-only)”.



6. End the NFC Tag Data Writing Application on the smartphone.

**5. The Factor that One Touch Connection is Impossible**

The four following factors are considered as the factor that one touch connection is impossible.

Guess and check the defective factor by each checking result.

**Note:** The four following factors are examples.

	Factor	Bluetooth manual connection check by user	NFC tag data check	Bluetooth manual connection check by servicing	NFC one touch connection check with smartphone
1	WF-1000XL (L-ch) defect	NG	—	NG	NG
2	BC-WF1000X (charging case) defect	OK	NG	OK	NG
3	NFC tag data writing failure	OK	NG	OK	NG
4	Smartphone	OK	OK	OK	NG

## SECTION 2 DISASSEMBLY

**Note:** Follow the disassembly procedure in the numerical order given.

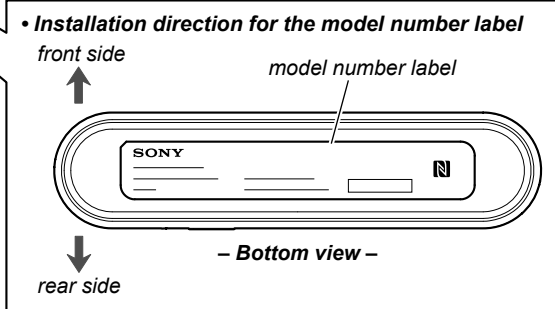
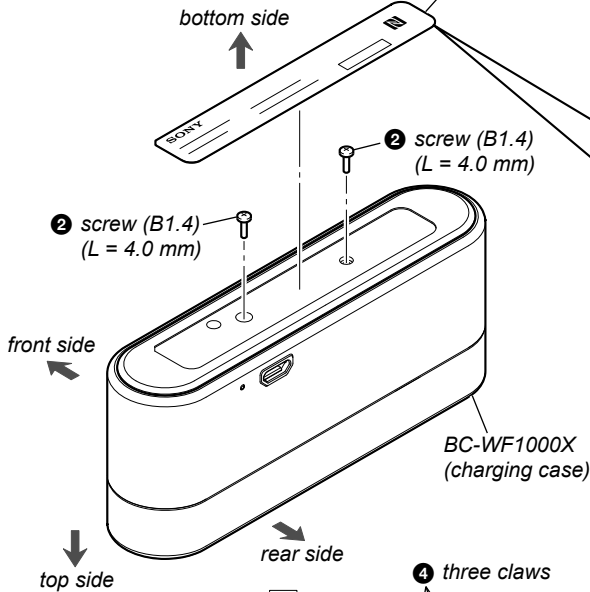
### CRADLE NFC BOARD (WITH SHEET (NFC))

**Note 1:** This procedure is required only when replacing the WF-1000XL (L-ch). For details, refer to "REPAIRING AND REPLACING OF THE WF-1000XL (L-ch)" on page 4.

**1 model number label**

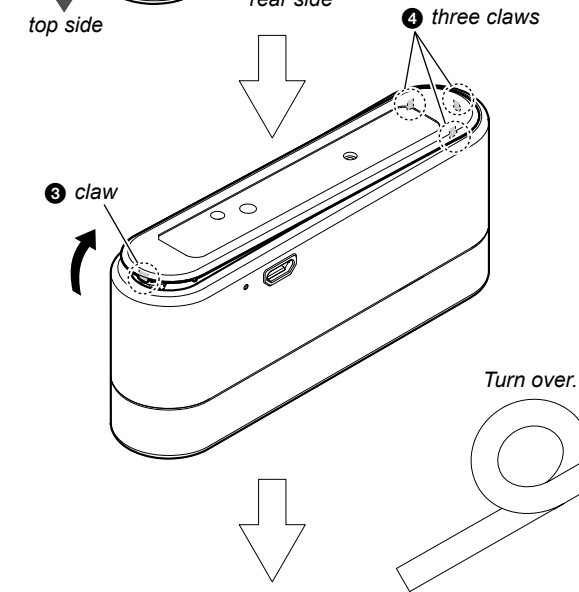
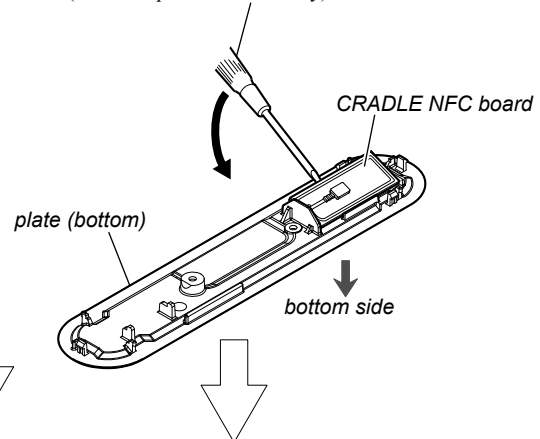
**Note 2:** Peel off the model number label carefully so that none of it remains on the plate (bottom). If it was not successfully peeled off, completely remove the remaining label on the plate (bottom) before affixing a new one to the plate (bottom).

**Note 3:** Replacing only the model number label is not possible. You must replace these three parts at the same time: WF-1000XL (L-ch), CRADLE NFC board (with sheet (NFC)), and model number label. (As repair parts, the WF-1000XL (L-ch), CRADLE NFC board (with sheet (NFC)), and model number label are supplied as a unit)



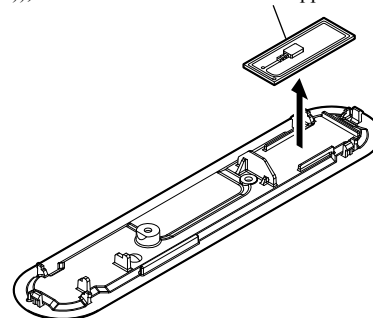
**6** Insert a flathead screwdriver in between the CRADLE NFC board and plate (bottom), and peel off the sheet (NFC).

**Note 4:** Be careful so that you do not damage the plate (bottom). If the plate (bottom) is damaged, replace it with a new one. (Can be replaced individually)

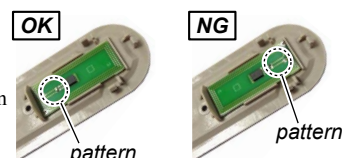


**7 CRADLE NFC board (with sheet (NFC))**

**Note 5:** Replacing only the CRADLE NFC board is not possible. You must replace these three parts at the same time: WF-1000XL (L-ch), CRADLE NFC board (with sheet (NFC)), and model number label. (As repair parts, the WF-1000XL (L-ch), CRADLE NFC board (with sheet (NFC)), and model number label are supplied as a unit)



**Note 6:** When installing the CRADLE NFC board to the plate (bottom), check the pattern on the CRADLE NFC board and install it to the plate (bottom) in the correct installation direction.

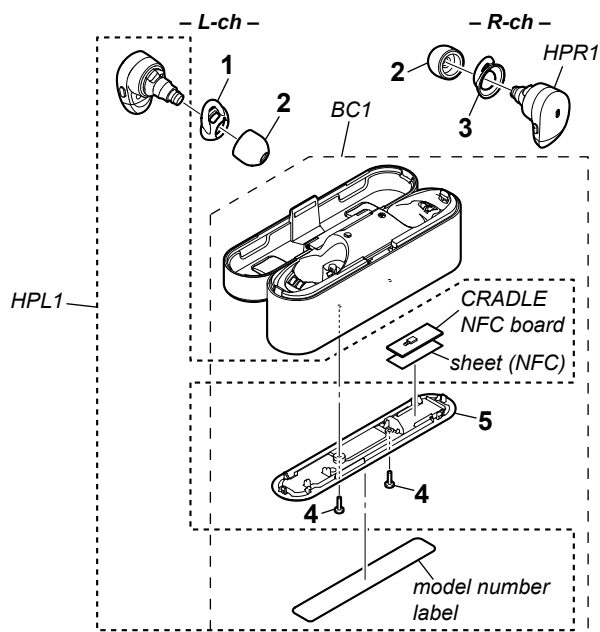
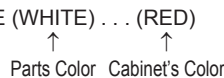


## SECTION 3 EXPLODED VIEW

**Note:**

- -XX and -X mean standardized parts, so they may have some difference from the original one.
- Items marked "\*" are not stocked since they are seldom required for routine service. Some delay should be anticipated when ordering these items.

- The mechanical parts with no reference number in the exploded views are not supplied.
- Color Indication of Appearance Parts Example:  
KNOB, BALANCE (WHITE) . . . (RED)



**Note 1:** When replacing the WF-1000XL (Ref. No. HPL1), make sure to replace the WF-1000XL (L-ch), CRADLE NFC board (with sheet (NFC)) of the charging case, and model number label at the same time. Otherwise, this unit will not work properly. (As repair parts, the WF-1000XL (L-ch), CRADLE NFC board (with sheet (NFC)), and model number label are supplied as a unit.) Also, when performing replacement work, make sure to refer to "REPAIRING AND REPLACING OF THE WF-1000XL (L-ch)" on page 4.

**Note 2:** When replacing the WF-1000XR (Ref. No. HPR1), make sure to refer to "REPAIRING AND REPLACING OF THE WF-1000XR (R-ch)" on page 5.

**Note 3:** For information about sizes other than size M, refer to "ACCESSORIES" on page 14.

**Note 4:** When replacing the charging case (BC-WF1000X) (Ref. No. BC1), make sure to refer to "REPAIRING AND REPLACING OF THE BC-WF1000X (Charging case)" on page 5.

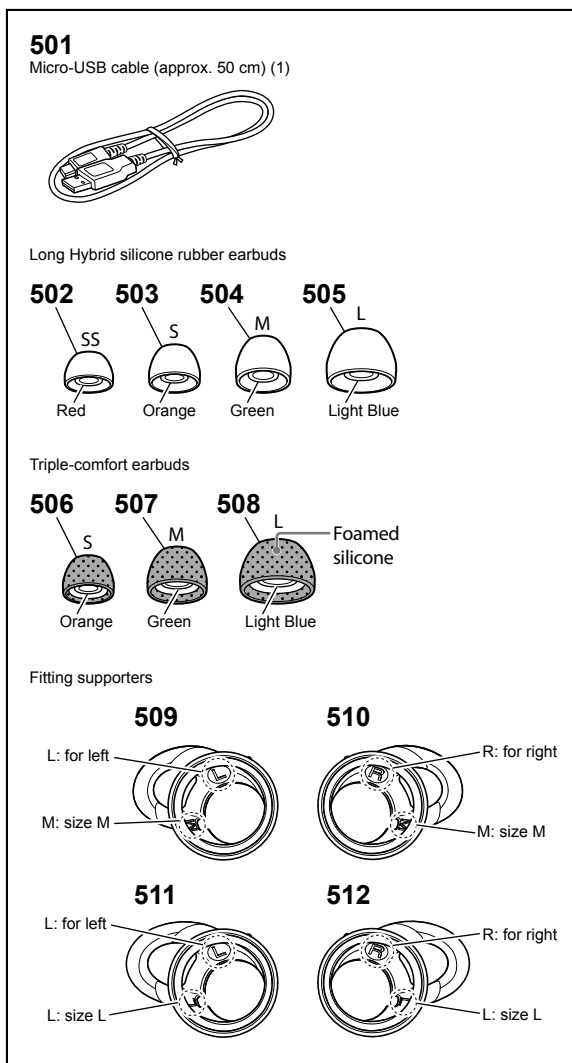
Ref. No. HPL1: Includes the CRADLE NFC board (with sheet (NFC)), Model number label of the charging case.

Ref. No.	Part No.	Description	Remark
1	4-698-671-01	SUPPORTER (L (M)), FITTING (for L-ch: size M) (BLACK) (for Black) (See Note 3)	
1	4-698-671-11	SUPPORTER (L (M)), FITTING (for L-ch: size M) (GRAY-BEIGE) (for Champagne Gold) (See Note 3)	
2	4-543-905-51	EAR PIECE, LONG (M) (Long Hybrid silicone rubber earbud: size M) (1 piece) (Outside: BLACK/Inside: GREEN) (for Black) (See Note 3)	
2	4-543-905-61	EAR PIECE, LONG (M) (Long Hybrid silicone rubber earbud: size M) (1 piece) (Outside: TRANSPARENT BEIGE/Inside: GREEN) (for Champagne Gold) (See Note 3)	
3	4-698-673-01	SUPPORTER (R (M)), FITTING (for R-ch: size M) (BLACK) (for Black) (See Note 3)	
3	4-698-673-11	SUPPORTER (R (M)), FITTING (for R-ch: size M) (GRAY-BEIGE) (for Champagne Gold) (See Note 3)	
4	3-254-136-11	SCREW (B1.4) (L= 4.0 mm)	
5	4-698-485-01	PLATE (BOTTOM) (for Black)	
5	4-698-485-11	PLATE (BOTTOM) (for Champagne Gold)	
BC1	A-2196-318-A	BC-WF1000X_BLACK_UC_SVX (Charging case) (for Black) (US, CND, LA) (See Note 4)	
BC1	A-2196-319-A	BC-WF1000X_GOLD_UC_SVX (Charging case) (for Champagne Gold) (US, CND, LA) (See Note 4)	
BC1	A-2196-320-A	BC-WF1000X_BLACK_E_SVX (Charging case) (for Black) (E, AUS, JE, RU) (See Note 4)	
BC1	A-2196-321-A	BC-WF1000X_GOLD_E7_SVX (Charging case) (for Champagne Gold) (E, AUS, JE, RU) (See Note 4)	
BC1	A-2196-322-A	BC-WF1000X_BLACK_CE7_SVX (Charging case) (for Black) (AEP, UK) (See Note 4)	
BC1	A-2196-323-A	BC-WF1000X_GOLD_CE7_SVX (Charging case) (for Champagne Gold) (AEP, UK) (See Note 4)	
BC1	A-2196-324-A	BC-WF1000X_BLACK_CN_SVX (Charging case) (for Black) (CH) (See Note 4)	
BC1	A-2196-325-A	BC-WF1000X_GOLD_CN_SVX (Charging case) (for Champagne Gold) (CH) (See Note 4)	

Ref. No.	Part No.	Description	Remark
HPL1	A-2196-304-A	WF-1000XL_BLACK_UC_SVX (for L-ch) (for Black) (US, CND, LA) (See Note 1)	
HPL1	A-2196-305-A	WF-1000XL_GOLD_UC_SVX (for L-ch) (for Champagne Gold) (US, CND, LA) (See Note 1)	
HPL1	A-2196-306-A	WF-1000XL_BLACK_E_SVX (for L-ch) (for Black) (E, AUS, JE, RU) (See Note 1)	
HPL1	A-2196-307-A	WF-1000XL_GOLD_E_SVX (for L-ch) (for Champagne Gold) (E, AUS, JE, RU) (See Note 1)	
HPL1	A-2196-308-A	WF-1000XL_BLACK_CE7_SVX (for L-ch) (for Black) (AEP, UK) (See Note 1)	
HPL1	A-2196-309-A	WF-1000XL_GOLD_CE7_SVX (for L-ch) (for Champagne Gold) (AEP, UK) (See Note 1)	
HPL1	A-2196-310-A	WF-1000XL_BLACK_CN_SVX (for L-ch) (for Black) (CH) (See Note 1)	
HPL1	A-2196-311-A	WF-1000XL_GOLD_CN_SVX (for L-ch) (for Champagne Gold) (CH) (See Note 1)	
HPR1	A-2196-313-A	WF-1000XR_BLACK_CE7_SVX (for R-ch) (for Black) (AEP, UK) (See Note 2)	
HPR1	A-2196-314-A	WF-1000XR_GOLD_CE7_SVX (for R-ch) (for Champagne Gold) (AEP, UK) (See Note 2)	
HPR1	A-2196-315-A	WF-1000XR_BLACK_CN_SVX (for R-ch) (for Black) (CH) (See Note 2)	
HPR1	A-2196-316-A	WF-1000XR_GOLD_CN_SVX (for R-ch) (for Champagne Gold) (CH) (See Note 2)	
HPR1	A-2197-817-A	WF-1000XR_BLACK_UC_SVX (for R-ch) (for Black) (US, CND, LA) (See Note 2)	
HPR1	A-2197-818-A	WF-1000XR_GOLD_UC_SVX (for R-ch) (for Champagne Gold) (US, CND, LA) (See Note 2)	
HPR1	A-2197-819-A	WF-1000XR_BLACK_E_SVX (for R-ch) (for Black) (E, AUS, JE, RU) (See Note 2)	
HPR1	A-2197-820-A	WF-1000XR_GOLD_E_SVX (for R-ch) (for Champagne Gold) (E, AUS, JE, RU) (See Note 2)	

## SECTION 4 ACCESSORIES

Ref. No.	Part No.	Description	Remark
	4-724-042-12	MANUAL, INSTRUCTION (Operating Instructions) (Except CH)	
	4-724-042-21	MANUAL, INSTRUCTION (Operating Instructions) (CH)	
	4-724-043-11	GUIDE, REFERENCE (ENGLISH, SPANISH, FRENCH) (US, CND, LA)	
	4-724-043-21	GUIDE, REFERENCE (ENGLISH, RUSSIAN, KOREAN) (E, AUS, JE, RU)	
	4-724-043-31	GUIDE, REFERENCE (SIMPLIFIED CHINESE) (CH)	
	4-724-044-11	GUIDE, REFERENCE (ENGLISH, FRENCH, GERMAN, SPANISH, DUTCH, ITALIAN, POLISH, HUNGARIAN) (AEP, UK)	
	4-724-044-21	GUIDE, REFERENCE (PORTUGUESE, GREEK, CZECH, BULGARIAN, SLOVAK, SLOVENIAN, ROMANIAN) (AEP, UK)	
501	1-848-682-21	CABLE, CONNECTION (USB) (Micro-USB cable (approx. 50 cm))	
502	4-543-903-51	EAR PIECE, LONG (SS) (Long Hybrid silicone rubber earbud: size SS) (1 piece) (Outside: BLACK/Inside: RED) (for Black)	
502	4-543-903-61	EAR PIECE, LONG (SS) (Long Hybrid silicone rubber earbud: size SS) (1 piece) (Outside: TRANSPARENT BEIGE/ Inside: RED) (for Champagne Gold)	
503	4-543-904-51	EAR PIECE, LONG (S) (Long Hybrid silicone rubber earbud: size S) (1 piece) (Outside: BLACK/Inside: ORANGE) (for Black)	
503	4-543-904-61	EAR PIECE, LONG (S) (Long Hybrid silicone rubber earbud: size S) (1 piece) (Outside: TRANSPARENT BEIGE/Inside: ORANGE) (for Champagne Gold)	
504	4-543-905-51	EAR PIECE, LONG (M) (Long Hybrid silicone rubber earbud: size M) (1 piece) (Outside: BLACK/Inside: GREEN) (for Black)	
504	4-543-905-61	EAR PIECE, LONG (M) (Long Hybrid silicone rubber earbud: size M) (1 piece) (Outside: TRANSPARENT BEIGE/Inside: GREEN) (for Champagne Gold)	
505	4-543-906-51	EAR PIECE, LONG (L) (Long Hybrid silicone rubber earbud: size L) (1 piece) (Outside: BLACK/Inside: LIGHT BLUE) (for Black)	
505	4-543-906-61	EAR PIECE, LONG (L) (Long Hybrid silicone rubber earbud: size L) (1 piece) (Outside: TRANSPARENT BEIGE/ Inside: LIGHT BLUE) (for Champagne Gold)	
506	4-591-876-01	EAR PIECE (S), TRIPLE COMFORT (Triple-comfort earbud: size S) (1 piece) (Outside: BLACK/Inside: ORANGE)	
507	4-591-875-01	EAR PIECE (M), TRIPLE COMFORT (Triple-comfort earbud: size M) (1 piece) (Outside: BLACK/Inside: GREEN)	
508	4-591-877-01	EAR PIECE (L), TRIPLE COMFORT (Triple-comfort earbud: size L) (1 piece) (Outside: BLACK/Inside: LIGHT BLUE)	
509	4-698-671-01	SUPPORTER (L (M)), FITTING (for L-ch: size M) (BLACK) (for Black)	
509	4-698-671-11	SUPPORTER (L (M)), FITTING (for L-ch: size M) (GRAY-BEIGE) (for Champagne Gold)	
510	4-698-673-01	SUPPORTER (R (M)), FITTING (for R-ch: size M) (BLACK) (for Black)	
510	4-698-673-11	SUPPORTER (R (M)), FITTING (for R-ch: size M) (GRAY-BEIGE) (for Champagne Gold)	
511	4-698-672-01	SUPPORTER (L (L)), FITTING (for L-ch: size L) (BLACK) (for Black)	
511	4-698-672-11	SUPPORTER (L (L)), FITTING (for L-ch: size L) (GRAY-BEIGE) (for Champagne Gold)	
512	4-698-674-01	SUPPORTER (R (L)), FITTING (for R-ch: size L) (BLACK) (for Black)	
512	4-698-674-11	SUPPORTER (R (L)), FITTING (for R-ch: size L) (GRAY-BEIGE) (for Champagne Gold)	



- Refer to "COLOR VARIATIONS" on page 2 about color variation of the unit.

MEMO

