

## HISTORY INFORMATION FOR THE FOLLOWING MANUAL:

# *SERVICE MANUAL*

**ORIGINAL MANUAL ISSUE DATE: 5/2016**

Chassis Name :GN2TP

Segment Name : QW

<b>Version</b>	<b>Date</b>	<b>Subject</b>
1.0	5/2016	Original manual issue.
1.1	6/2016	Add Main Board Replacement Caution Guide at slide 17 Add Power Board Replacement Caution Guide at slide 18 Update LVDS cable picture at slide 20 Add Himeron Countermeasure at slide 28~33 Update tape location at slide 40 Update SW version at slide 44, 46 Add Assembly Parts at slide 50~55
1.2	8/2016	Add LA1 model
1.3	9/2016	Add LGD panel model power board P/N at slide 13 Add LGD panel P/N at slide 14 Add Select Panel Type at slide 56
1.4	9/2016	Renew the description to Stand Bracket at slide 14

**LCD Digital Color TV**

**SONY®**

# MODEL LIST

---

<u>MODEL</u>	<u>COLOR</u>	<u>COMMANDER</u>	<u>DEST.</u>
<i>KDL-55W650D</i>	<i>Black</i>	<i>RMT-TX102U</i>	<i>UC2</i>
<i>KDL-55W650D</i>	<i>Black</i>	<i>RMT-TX102U</i>	<i>LA1</i>

<u>MODEL</u>	<u>COLOR</u>	<u>COMMANDER</u>	<u>DEST.</u>
--------------	--------------	------------------	--------------

# Table of content

<b>Description</b>	<b>Page</b>
<i>WARNINGS AND CAUTIONS</i> .....	4
<i>USE CAUTION WHEN HANDLING THE LCD PANEL</i> .....	5
<i>SAFETY CHECK-OUT</i> .....	6
<i>SELF DIAGNOSIS FUNCTION</i> .....	8
<i>SERVICE POSITION</i> .....	9
<i>SEC 1. DISASSEMBLY AND PARTS LIST</i> .....	10
<i>1-1. KDL-55W650D</i> .....	11
<i>1-1-1. BASE STAND</i> .....	11
<i>1-1-2. REAR COVER</i> .....	12
<i>1-1-3. POWER BOARD, A BOARD AND SPEAKER</i> .....	13
<i>1-1-4. LCD PANEL, DECO and COVER, BOTTOM</i> .....	14
<i>1-1-5. MISCELLANEOUS</i> .....	15
<i>1-2. How to disassemble rear cover [KDL-55W650D]</i> .....	16
<i>1-3. Main Board Replacement Caution Guide [KDL-55W650D]</i> .....	17
<i>1-4. Power Board Replacement Caution Guide [KDL-55W650D]</i> .....	18
<i>1-5. How to disassemble Deco</i> .....	19
<i>1-5-1. How to disassemble Deco [KDL-55W650D]</i> .....	19
<i>1-6. How to disassemble LVDS cable [KDL-55W650D]</i> .....	20
<i>1-6-1. How to disassemble LVDS cable [KDL-55W650D]</i> .....	20
<i>1-7. How to disassemble IR Board[KDL-55W650D]</i> .....	22
<i>1-8. How to ass'y the LED lens [KDL-55W650D]</i> .....	23
<i>1-9. How to ass'y the KEY Board[KDL-55W650D]</i> .....	24
<i>1-10. How to disassembly the Front bezel[KDL-55W650D]</i> .....	25
<i>1-11. How to ass'y the Front bezel[KDL-55W650D]</i> .....	27
<i>1-12 Himeron Countermeasure on panel[KDL-55W650D]</i> .....	28
<i>SEC 2. ADJUSTMENT</i> .....	34

<b>Description</b>	<b>Page</b>
<i>SEC 3. DIAGRAMS AND CHASSIS STRUCTURE</i> .....	36
<i>3-1. BLOCK DIAGRAM</i> .....	36
<i>3-2. CONNECTOR DIAGRAM</i> .....	37
<i>3-3. CIRCUIT BOARDS LOCATION</i> .....	38
<i>3-4. Tape location</i> .....	40
<i>APPENDIX-1 Trouble analysis flow</i> .....	43
<i>APPENDIX-2 Software data update</i> .....	44
<i>APPENDIX-3 Panel Operation Time</i> .....	48
<i>APPENDIX-4 Edit MODEL NAME and Serial Number</i> .....	49
<i>APPENDIX-5 Assembly parts</i> .....	50
<i>APPENDIX-6 Select Panel Type</i> .....	56

# WARNINGS AND CAUTIONS - ENGLISH

---

## CAUTION

These servicing instructions are for use by qualified service personnel only.

To reduce the risk of electric shock, do not perform any servicing other than that contained in the operating instructions unless you are qualified to do so.

## WARNING!!

An isolation transformer should be used during any service to avoid possible shock hazard, because of live chassis.

The chassis of this receiver is directly connected to the ac power line.

## CARRYING THE TV

Be sure to follow these guidelines to protect your property and avoid causing serious injury.

- Carry the TV with an adequate number of people; larger size TVs require two or more people.
- Correct hand placement while carrying the TV is very important for safety and to avoid damages.

## SAFETY-RELATED COMPONENT WARNING!!

Components identified by shading and ! mark on the schematic diagrams, exploded views, and in the parts list are critical for safe operation. Replace these components with Sony parts whose part numbers appear as shown in this manual or in supplements published by Sony. Circuit adjustments that are critical for safe operation are identified in this manual.

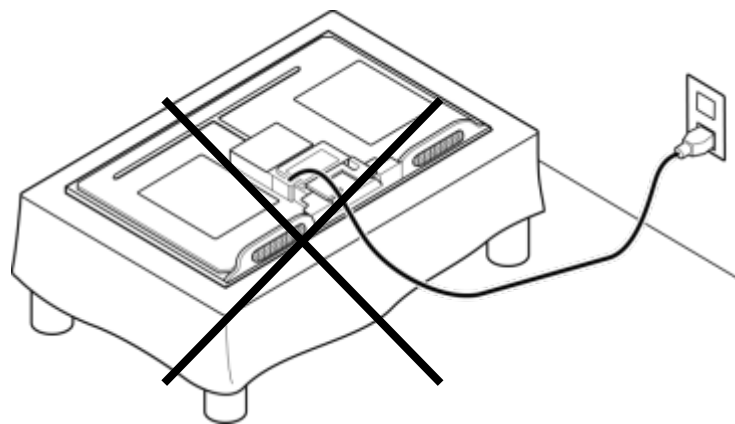
Follow these procedures whenever critical components are replaced or improper operation is suspected.

## USE CAUTION WHEN HANDLING THE LCD PANEL

When repairing the LCD panel, be sure you are grounded by using a wrist band.

When repairing the LCD panel on the wall, the LCD panel must be secured using the 4 mounting holes on the rear cover.

- 1) Do not press on the panel or frame edge to avoid the risk of electric shock.
- 2) Do not scratch or press on the panel with any sharp objects.
- 3) Do not leave the module in high temperatures or in areas of high humidity for an extended period of time.
- 4) Do not expose the LCD panel to direct sunlight.
- 5) Avoid contact with water. It may cause a short circuit within the module.
- 6) Always clean the LCD panel with a soft cloth material.
- 7) Use care when handling the wires or connectors of the inverter circuit. Damaging the wires may cause a short.
- 8) Protect the panel from ESD to avoid damaging the electronic circuit (C-MOS).
- 9) It is recommended not to exceed 1 hour of Power-On nor Burn-in period with LCD panel face down condition, in repair activity.
- 10) Disconnect the AC power when replacing the parts.(FFC cable etc.).



# SAFETY CHECK-OUT

---

After correcting the original service problem, perform the following safety checks before releasing the set to the customer:

1. Check the area of your repair for unsoldered or poorly soldered connections. Check the entire board surface for solder splashes and bridges.
2. Check the interboard wiring to ensure that no wires are “pinched” or touching high-wattage resistors.
3. Check that all control knobs, shields, covers, ground straps, and mounting hardware have been replaced. Be absolutely certain that you have replaced all the insulators.
4. Look for unauthorized replacement parts, particularly transistors, that were installed during a previous repair. Point them out to the customer and recommend their replacement.
5. Look for parts which, though functioning, show obvious signs of deterioration. Point them out to the customer and recommend their replacement.
6. Check the line cords for cracks and abrasion. Recommend the replacement of any such line cord to the customer.
7. Check the antenna terminals, metal trim, “metallized” knobs, screws, and all other exposed metal parts for AC leakage. Check leakage as described below.
8. For safety reasons, repairing the Power board and/or Inverter board is prohibited.

## Leakage Test

(To protect electric shock when customer touch the terminal.)

Leakage current can be measured by V: Voltmeter or oscilloscope (r.m.s. or peak reading)

Stabilized power supply instrument and isolated voltage transformer:

Use too much current capacity and isolated voltage transformer does not need to use stabilized power supply equipment

Specification of RMS volt meter: Input resistance > 1 Mohm, Input capacitance < 200 pF,

Frequency range: 15 Hz – 1MHz (Refer Figure 1). Isolated type volt -meter (FLUKE 8921A etc \*1)

\*1 Not use FLUKE 8920A that connected to protective earth by diode

# Leakage current of measurement instrument is less than  $10\mu\text{Arms}$  when under test equipment AC plug is opened

# Set up the following condition and turn on the set.

Applied voltage: Nominal input voltage (Description on Nameplate)

# Measure the leakage current between one phase conductor and neutral for terminal A and terminal B.

Read rms value, and then calculate to peak value  $\text{PEAK VALUE} = \sqrt{2} \text{RMS VALUE}$

Comply with the following requirement Class II equipment (2-pin plug): for each terminal, the worst value of measurement must not exceed AC 350uA peak). Note: including AC adaptor, AC adaptor/DC operated unit combination

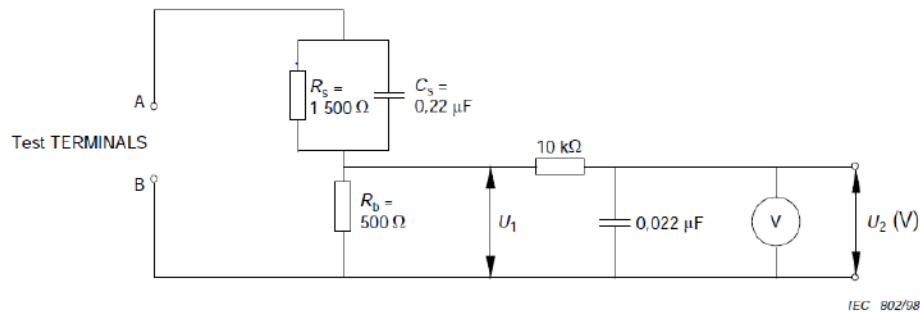


Figure 1 – Measuring network for Leakage Current

## How to Find a Good Earth Ground

A cold-water pipe is a guaranteed earth ground; the cover-plate retaining screw on most AC outlet boxes is also at earth ground. If the retaining screw is to be used as your earth ground, verify that it is at ground by measuring the resistance between it and a cold-water pipe with an ohmmeter. The reading should be zero ohms.

If a cold-water pipe is not accessible, connect a 60- to 100-watt trouble- light (not a neon lamp) between the hot side of the receptacle and the retaining screw. Try both slots, if necessary, to locate the hot side on the line; the lamp should light at normal brilliance if the screw is at ground potential (see Figure B).

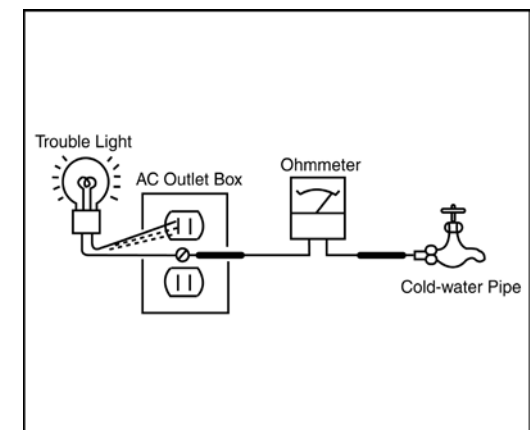


Figure B. Checking for earth ground.

# SELF DIAGNOSIS FUNCTION

This model support Self Diagnosis Function.

## HOW TO ENTERING Self Diagnosis Display

1) standby mode

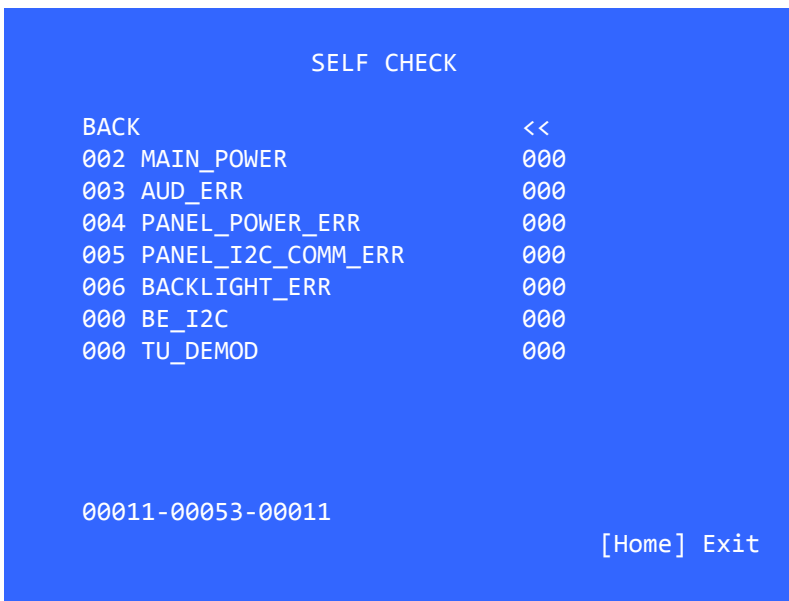
- a. Turn on the main power switch to place this set in standby mode.
- b. Press the buttons on the remote commander as follows, and entering self diagnosis display.



2) power on mode

- a. Turn on the main power switch to place this set in Power on mode.
- b. Directly go to Self Diagnosis Display in Service Menu.

## Self Diagnosis Display



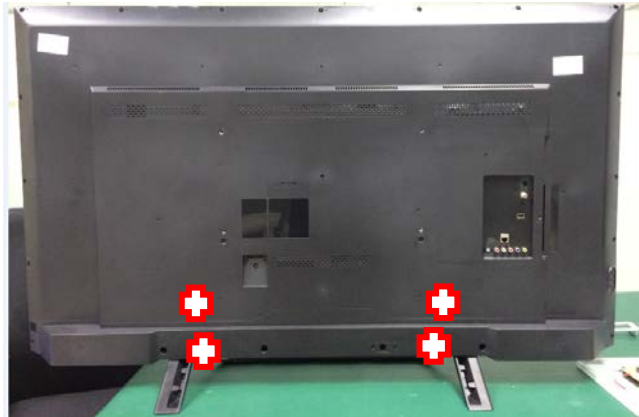
Items	Error Items	Description
002	MAIN_POWER	Detect and observe main voltage
003	AUD_ERR	Detecting/Observing audio AMP error
004	PANEL_POWER_ERR	Detect and observe for Panel_12V
005	PANEL_I2C_COMM_ERR	Detect Panel I2C Communication access error
006	BACKLIGHT_ERR	Detect and observe backlight error
000	BE_I2C	BE device I2C communication error detection.
000	TU_DEMOD	Tuner & Demodulator 2Ccommunication monitoring. Tuner Detect signal monitoring.

# SERVICE POSITION

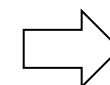
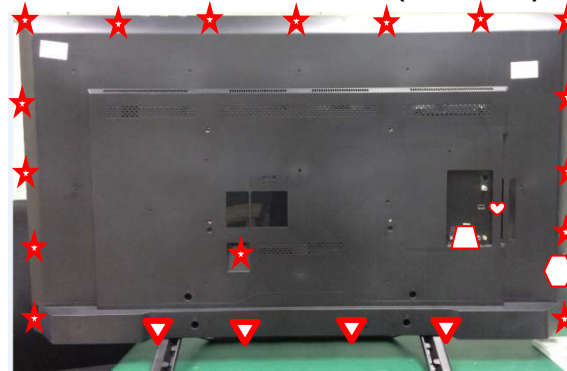
As for this model, the bottom of rear cover is installed between the stand assy and the panel.  
Therefore according to the following procedure when performing adjustment and operation check after the part replacement.

<KDL-55W650D >

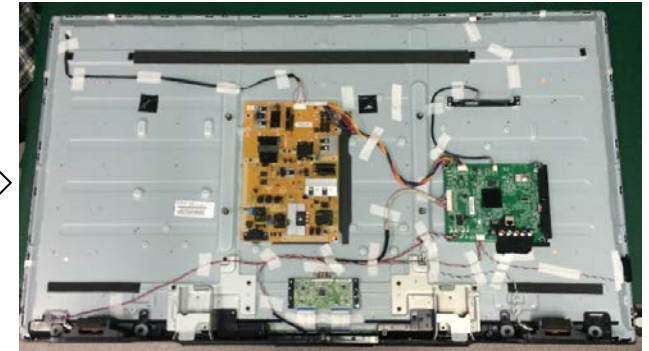
1. Remove all screws on the Stand to main unit (4 screws)



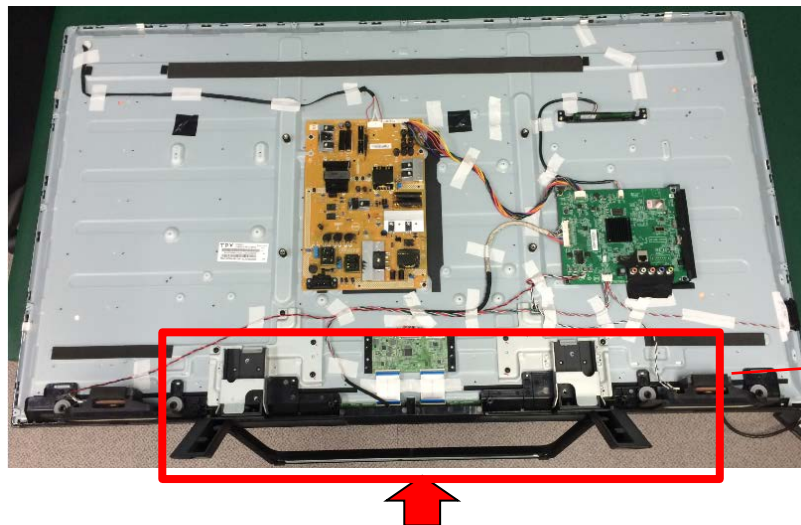
2. Remove all screws on the Rear Cover to Bezel & Main Board & Bracket (23 screws)



3. After removing rear cover, lie down the main unit to a surface for following test/repair.



	4-592-444-01	SCREW, +PSW M5X12
	4-595-220-01	SCREW +BVTP Q4X12 TYPE2 N-S, ODM(T)
	7-682-903-19	SCREW +PWH M3X6
	4-595-222-01	SCREW +PWH M3X8 W7.5, ODM(T)
	4-595-219-01	SCREW +BVTP Q3X8 TYPE2 N-S, ODM(T)
	4-595-213-01	SCREW +K M3X6, ODM(T)



**Attention:** This photo is based on Sony criteria for appearing standing the main unit after removing back cover and assembling the stand. But considering mechanical design of Taurus models and normal service process, it is not recommended to keep main unit standing by this status for repairing/testing at repair center. Please pay attention for avoiding possible scratch/deformation occurred.

**Note:** Remove rear cover, then assemble the stand to main unit. This will cause the stand with main unit fit closely, scratch or deformation may occurred easily on the stand or bezel deco.

# SEC 1. DISASSEMBLY AND PARTS LIST

---

- Items with no part number and no description are not stocked because they are seldom required for routine service.
- The construction parts of an assembled part are indicated with a collation number in the remark column.
- Items marked " \* " are not stocked since they are seldom required for routine service. Some delay should be anticipated when ordering these items.

**The components identified by shading and mark  $\triangle$  are critical for safety. Replace only with part number specified.**

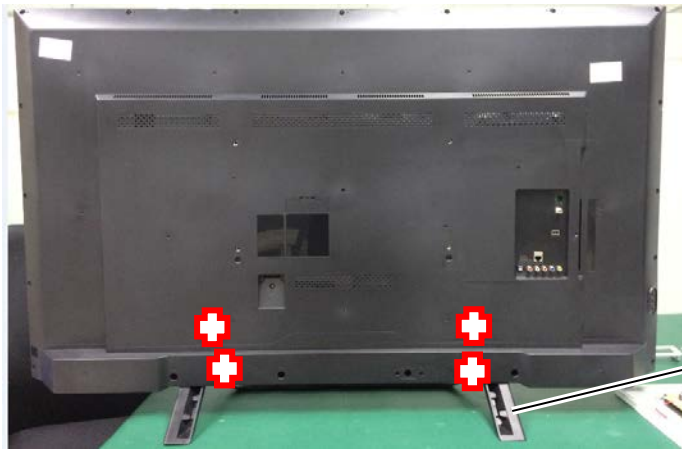
**The components identified by mark  $\square$  contain confidential information. Strictly follow the instructions whenever the components are repaired and/or replaced.**

# 1-1. KDL-55W650D

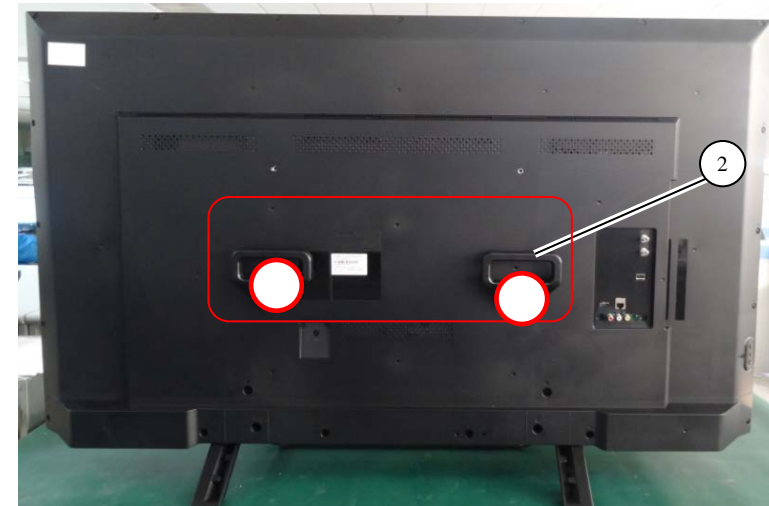
## 1-1-1. BASE STAND

REF. No.	PART No.	DESCRIPTION	MARK
1	A-2123-138-A	STAND ASSY	
2	4-571-144-01	HANDLE	
3	4-592-438-01	STAND, NECK	

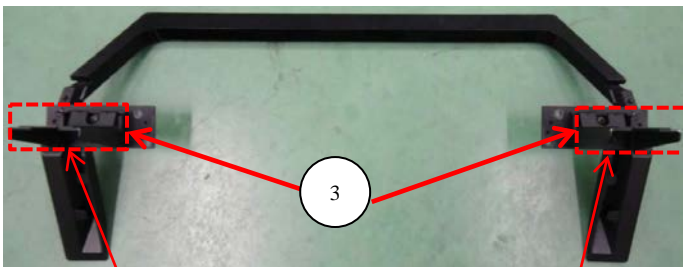
+	4-592-444-01	SCREW, +PSW M5X12
○	4-595-223-01	SCREW +PSW M6X22, ODM(T)



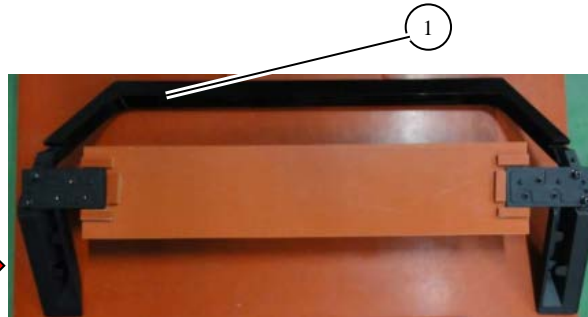
1



2



3



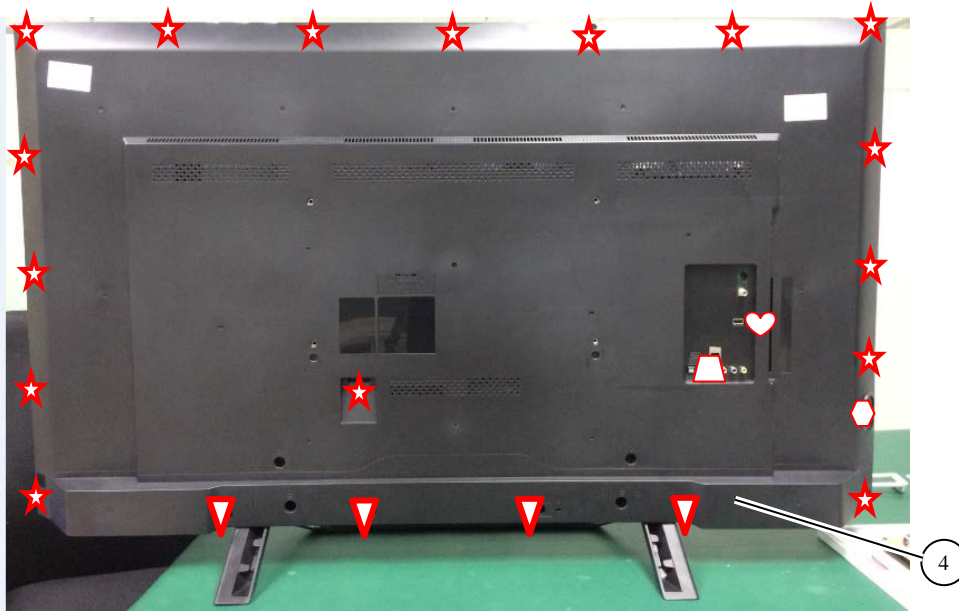
1



If want to disassemble the stand neck from the stand ASSY, just remove the six screws.

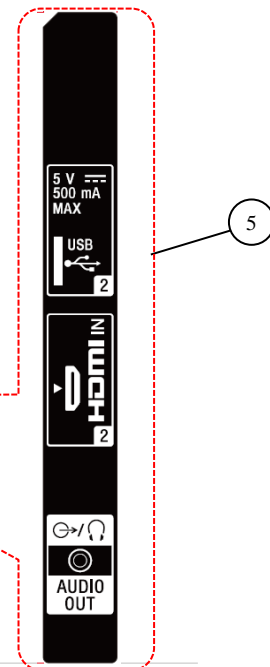
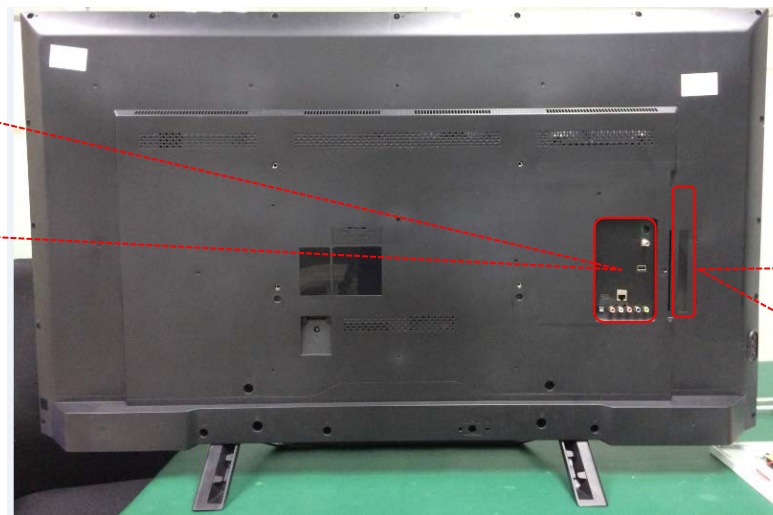
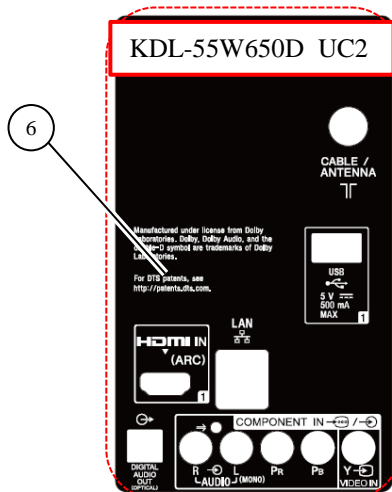
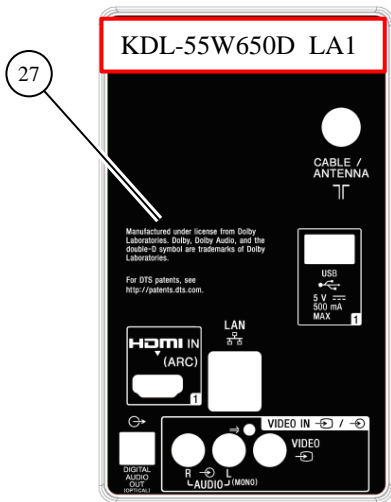
# 1-1. KDL-55W650D

## 1-1-2. REAR COVER



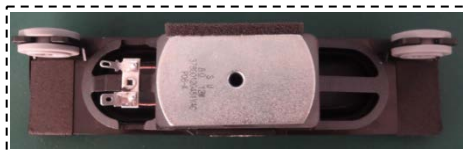
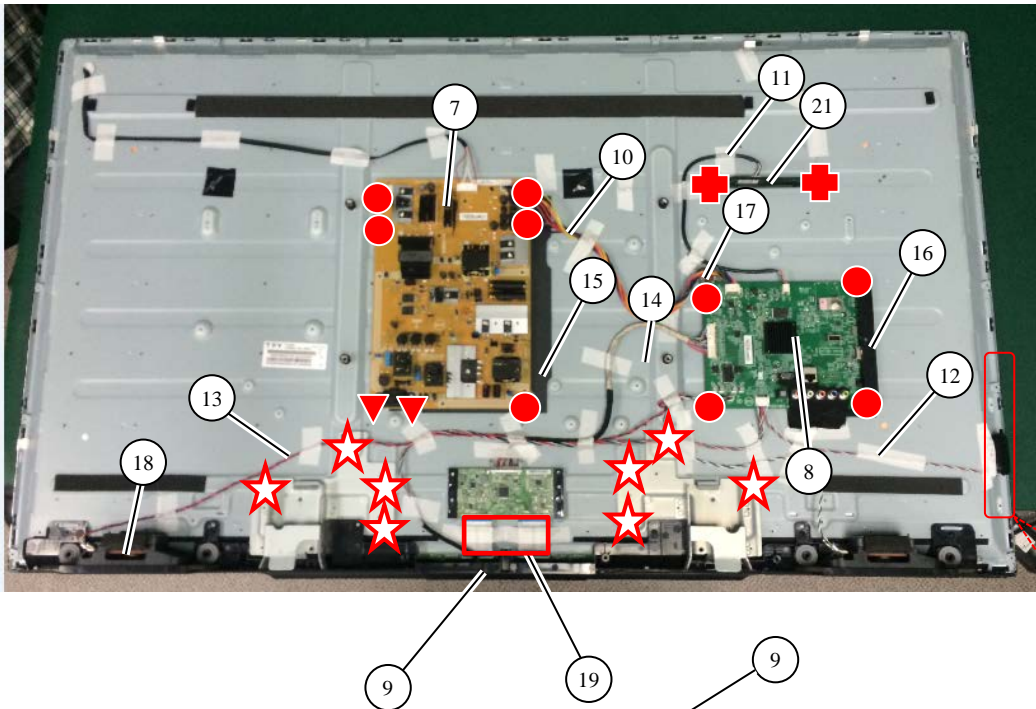
REF. No.	PART No.	DESCRIPTION	MARK
4	4-592-418-21	COVER, REAR (55)	
5	4-593-164-01	LABEL, SIDE I/O	
6	4-596-363-01	LABEL, BACK I/O	for UC2 model
27	4-688-308-01	LABEL, BACK I/O	for LA1 model

▽	4-595-220-01	SCREW +BVTP Q4X12 TYPE2 N-S, ODM(T)
★	7-682-903-19	SCREW +PWH M3X6
⬡	4-595-222-01	SCREW +PWH M3X8 W7.5, ODM(T)
▱	4-595-219-01	SCREW +BVTP Q3X8 TYPE2 N-S, ODM(T)
♥	4-595-213-01	SCREW +K M3X6, ODM(T)



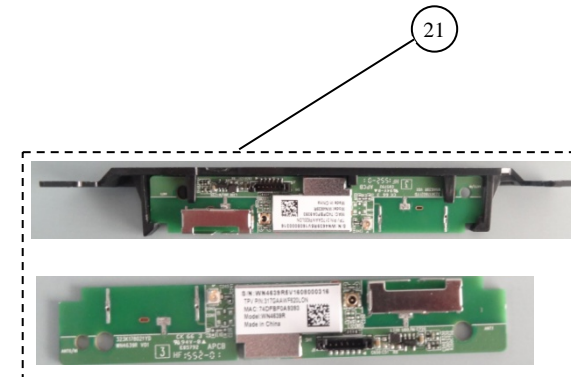
# 1-1. KDL-55W650D

## 1-1-3. POWER BOARD, A BOARD AND SPEAKER



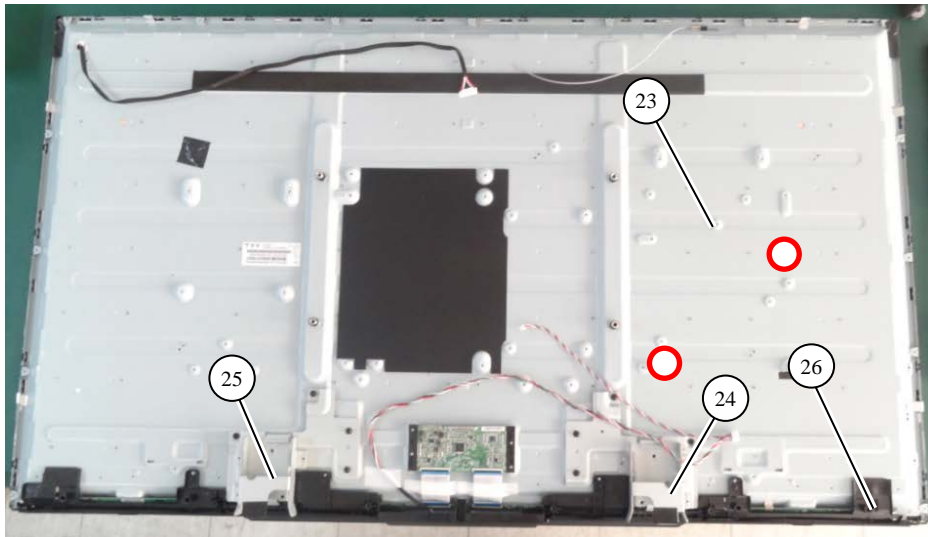
- 4-595-216-01 SCREW +PSW 3X6 W6.5, ODM(T)
- ▽ 4-595-221-01 TAPPING +PWH 3X8 TYPE2 N-S, ODM(T)
- ☆ 4-595-218-01 SCREW +PSW 4X8, ODM(T)
- ▼ 2-580-592-01 SCREW, +PSW M3X8
- ✚ 4-595-214-01 SCREW +PWH 3X5, ODM(T)

REF. No.	PART No.	DESCRIPTION	MARK
7	1-895-965-11	MOUNTED PWB POWER UNIT	for UC2 model BOE panel
	1-897-087-11	MOUNTED PWB POWER UNIT LGD	for UC2 model LGD panel
8	1-895-964-21	MOUNTED PWB A	for UC2 model
	1-897-053-11	MOUNTED PWB A	for LA1 model
9	1-895-956-11	MOUNTED PWB H	
10	1-910-111-41	CONNECTOR ASSY 16P (MB-PSU)	
11	1-910-111-44	CONNECTOR ASSY 6P (MB-WiFi)	
12	1-910-111-43	CONNECTOR ASSY (MB-IR-KEY)	
13	1-910-111-42	CONNECTOR ASSY 4P (MB-SP)	
14	1-910-111-45	LVDS CABLE (MB-Panel)	
15	4-592-437-01	SHEET, INSULATION	
16	4-593-163-01	BRACKET, SIDE I/O	
17	4-571-385-01	BRACKET, PSU	
18	1-859-187-11	LOUDSPEAKER (12W)	
19	1-910-111-46	FFC CABLE WITH TOP AL TAPE	
20	1-895-957-11	MOUNTED PWB KEY	Assembly part
21	1-895-960-11	WI-FI MODULE (WITH ANTENNA)	
22	4-592-421-01	HOLDER, WIFI	



## 1-1. KDL-55W650D

### 1-1-4. LCD PANEL, DECO and COVER, BOTTOM



REF. No.	PART No.	DESCRIPTION	MARK
▲ 23	A-2123-136-A	LCM ASSY (55) (BOE)	
▲ 24	A-2178-977-A	LCM ASSY (55) (LGD)	for UC2 model LGD panel
25	4-592-433-01	BRACKET L, STAND	
26	4-592-434-01	BRACKET R, STAND	
	4-592-419-01	COVER, BOTTM (55)	

○	4-542-283-01	BOLT, M3
---	--------------	----------



**1-1. KDL-55W650D**

**1-1-5. MISCELLANEOUS**

<b>PART No.</b>	<b>DESCRIPTION</b>	<b>MARK</b>
1-492-980-21	REMOTE COMMANDER (RMT-TX102U)	
△ 1-846-425-43	CORD SET, POWER-SUPPLY	

## 1-2. How to disassemble rear cover [KDL-55W650D]

### PROCEDURE TO REMOVAL OF REAR COVER

1. Remove all screws on Rear Cover and AC Cover.
2. Open Rear Cover in order as below.



Hold the panel from the middle of bezel, and lift rear cover in the direction of the arrow.

## 1-3. Main Board Replacement Caution Guide[KDL-55W650D UC2/LA1]

### 1-3-1. Factory mode optional bit check and manual adjustment step [KDL-55W650D UC2/LA1]

#### 1. Enter Factory Menu:

Press “home + 1999 + return” key to enter the factory menu. SW version can be saw in item 2, just like the below picture.

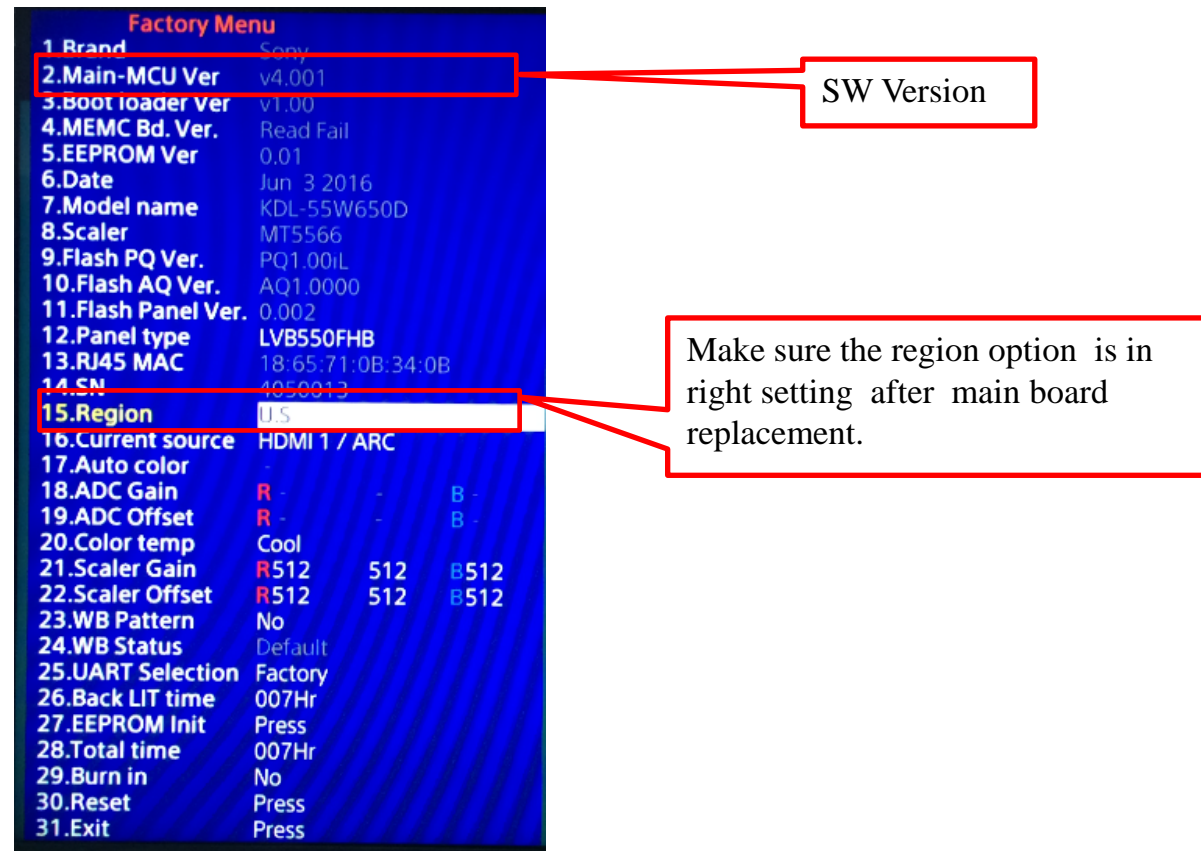
#### 2. Check Region item (item 15)

Please check TV set s/n and set the Region item correctly

If TV s/n is 4,000,001-4,300,000 , please ensure the item set to “U.S”. Others s/n case, please ensure the item set to “MX”.

#### 3. Exiting Factory Menu:

Press the remote control key “↓” to choose item 31, and then press remote control key “OK” to exit factory menu.

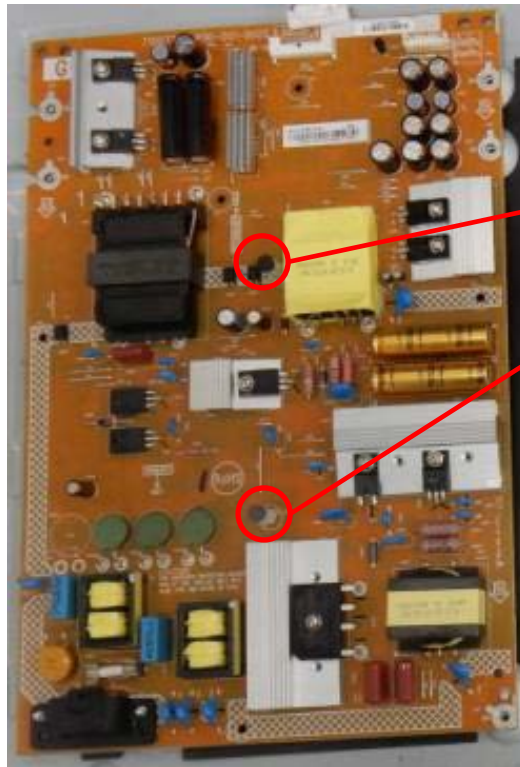


**Caution:** This adjustment step for region is mandatory check item after main board replacement. Other items should be kept the original setting.

## 1-4. Power Board Replacement Caution Guide [KDL-55W650D UC2/LA1]

### 1-4-1. Assembly the PSU Support pin [KDL-55W650D UC2/LA1]

1. Assembly the two support pins into the power board. And then check whether the support pins is locked well on the back side of the power board.



Check the support pin is fixed well after power board replacement.



Locked well on the back side of the power board.



Not locked well on the back side of the power board.

Item	Sony PN	Description	Qty
1	4-571-413-01	SUPPORT, PWB	2

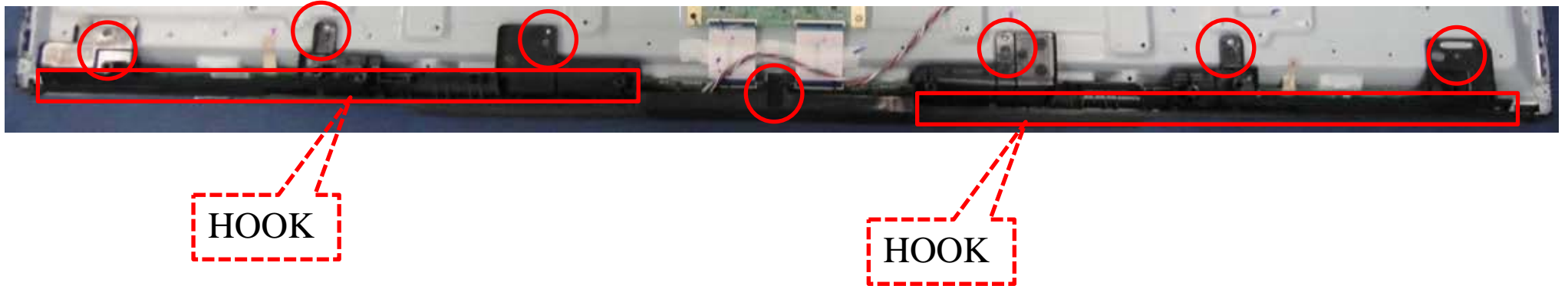
**Caution:** If you replace the power board, please check the PSU support pin.

## 1-5. How to disassemble Deco

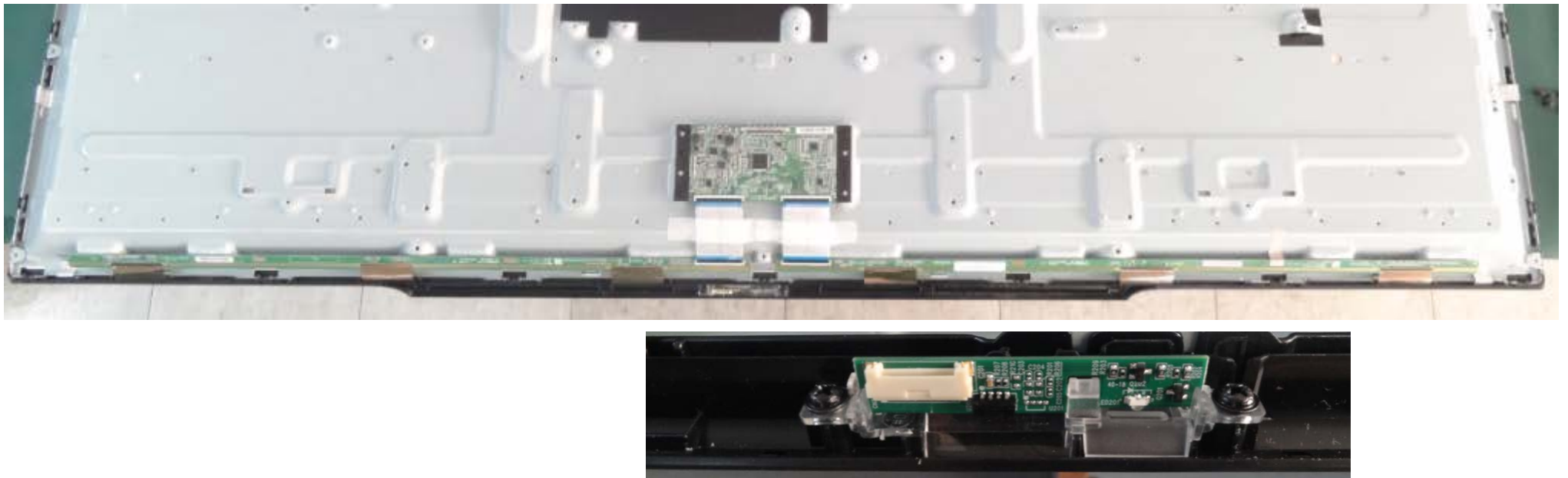
### 1-5-1. How to disassemble Deco[KDL-55W650D UC2/LA1]

#### PROCEDURE TO REMOVAL OF DECO

Remove screw from bezel



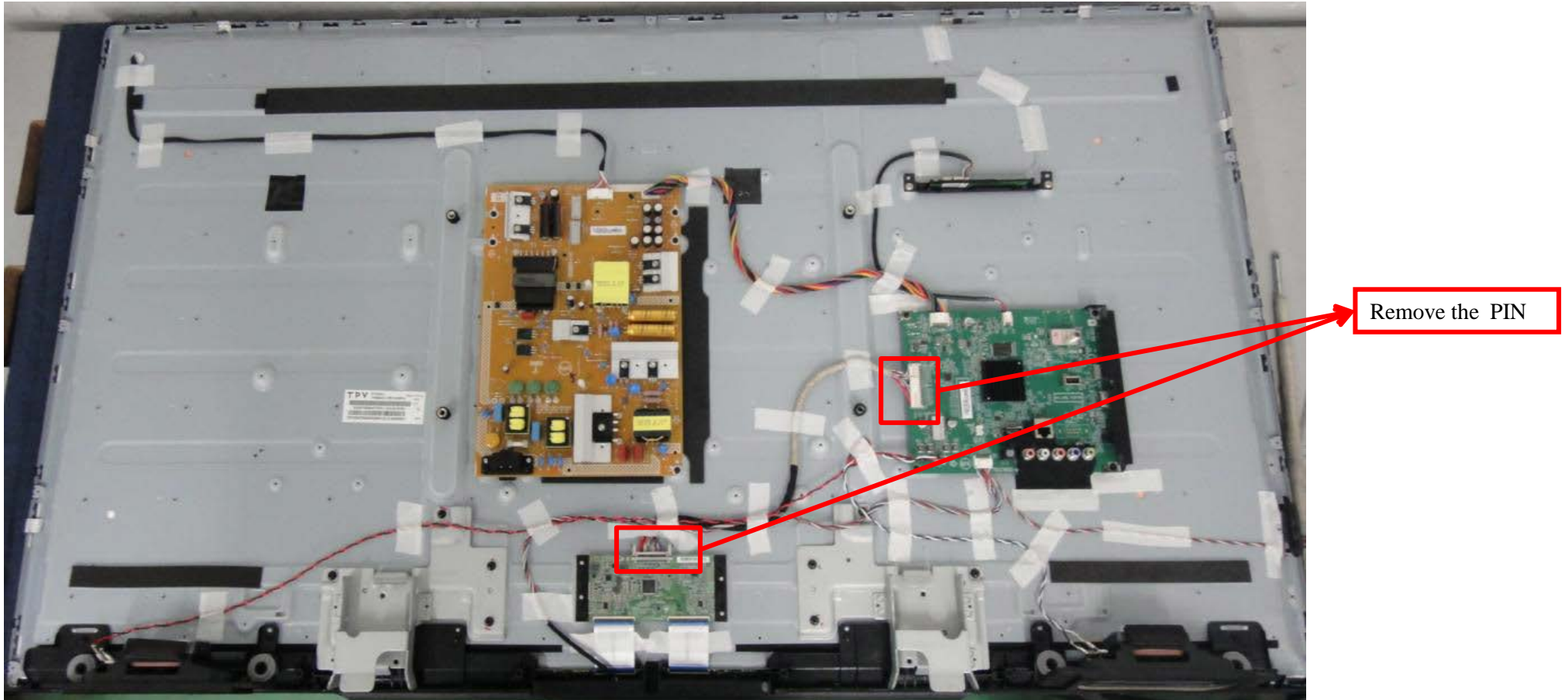
Remove deco from bezel



## 1-6. How to disassemble LVDS Cable

### 1-6-1. How to disassemble LVDS Cable[KDL-55W650D UC2]

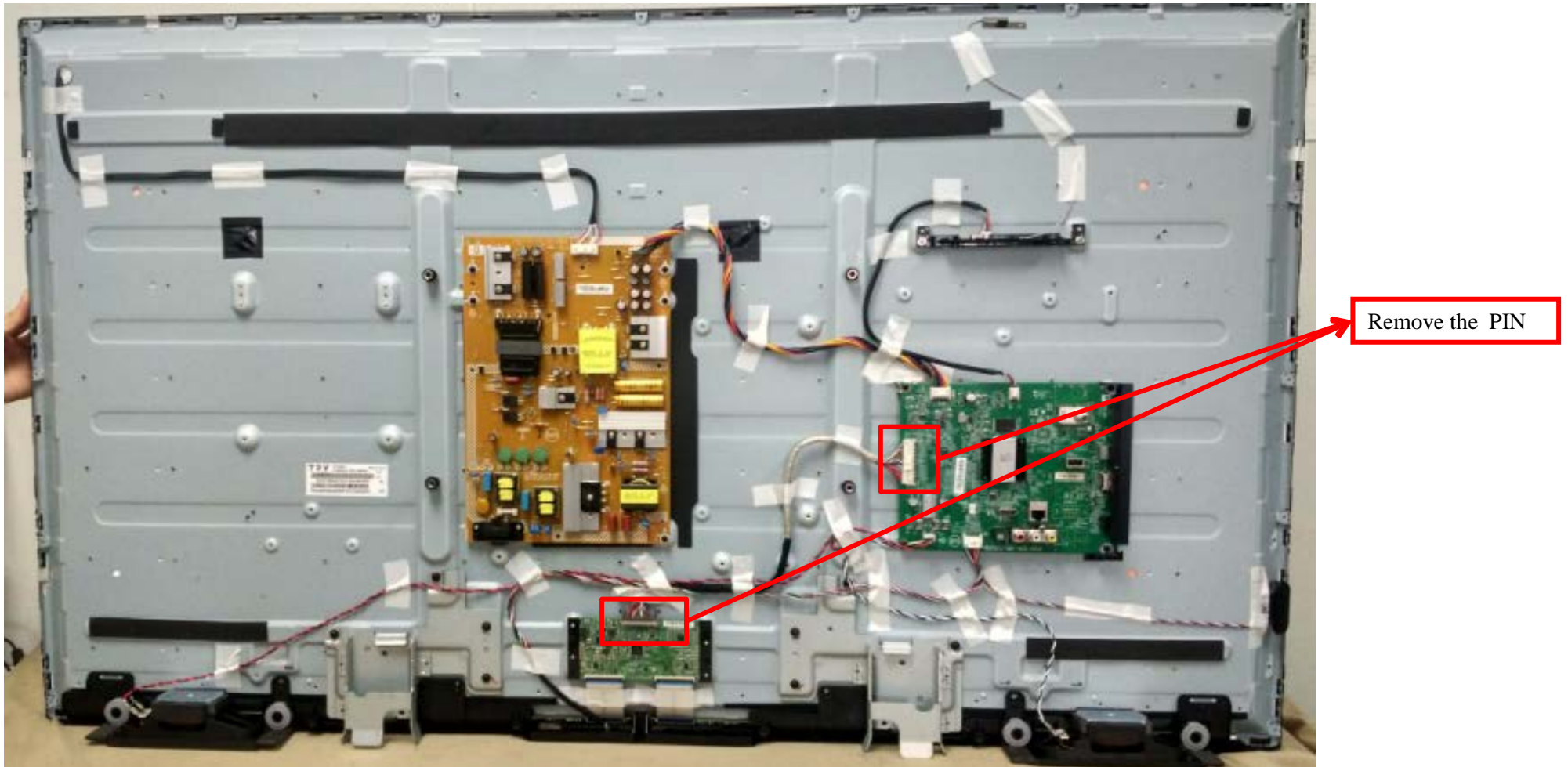
#### 1-6-1-1. PROCEDURE OF REMOVING LVDS CABLE ON KDL-55W650D UC2



## 1-6. How to disassemble LVDS Cable

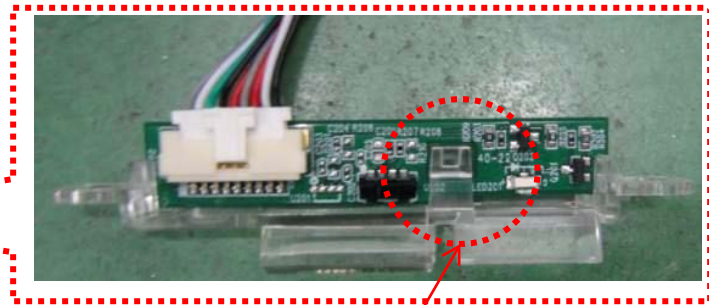
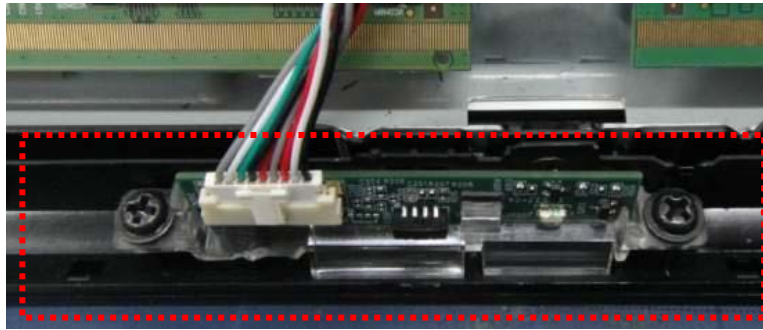
### 1-6-1. How to disassemble LVDS Cable[KDL-55W650D LA1]

#### 1-6-1-2. PROCEDURE OF REMOVING LVDS CABLE ON KDL-55W650D LA1



## 1-7. How to disassemble IR Board[KDL-55W650D UC2/LA1]

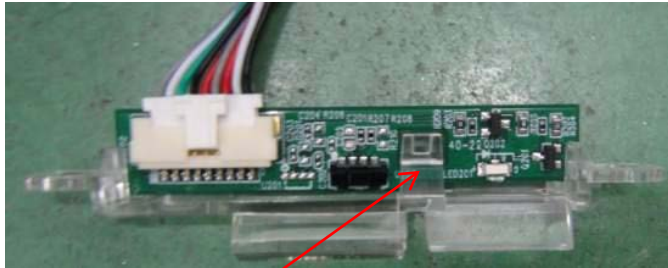
### PROCEDURE TO REMOVAL OF IR Board



Hook

Release hook from IR Board

## 1-8. How to ass'y the LED lens[KDL-55W650D UC2/LA1]

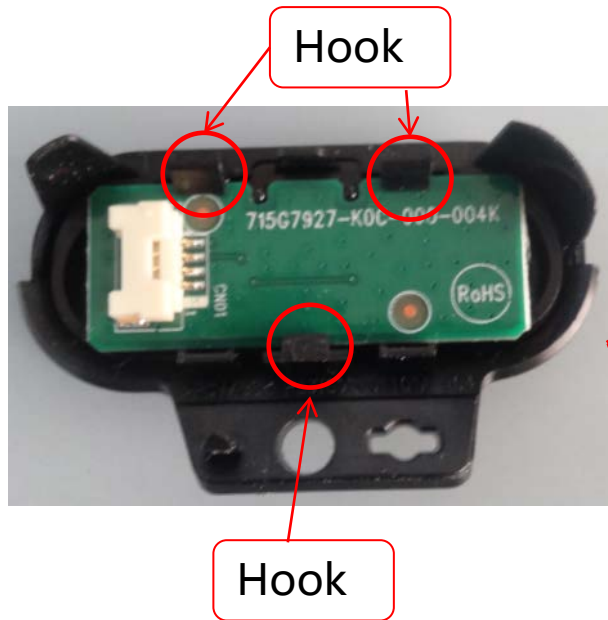


The LED lens is installed in the hole.  
As shown in the picture.

4-592-420-01    LENS, GUIDE

## 1-9. How to ass'y the KEY Board[KDL-55W650D UC2/LA1]

### PROCEDURE TO REMOVAL OF KEY Board



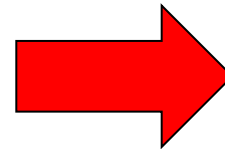
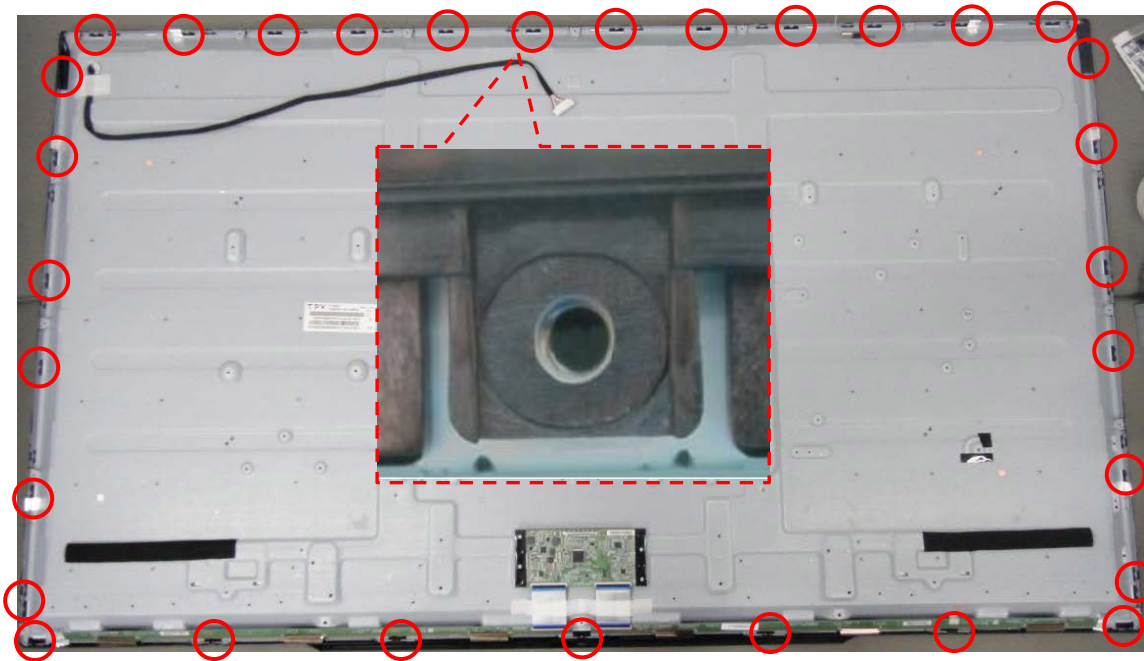
Release hook from KEY Board



## 1-10. How to disassemble the Front Bezel[KDL-55W650D UC2/LA1]

### PROCEDURE TO REMOVAL OF FRONT BEZEL

Remove all the fixation screws that secure the Front bezel.



**Front bezel**



**Cell**



## 1-10. How to disassemble the Front Bezel[KDL-55W650D UC2/LA1]

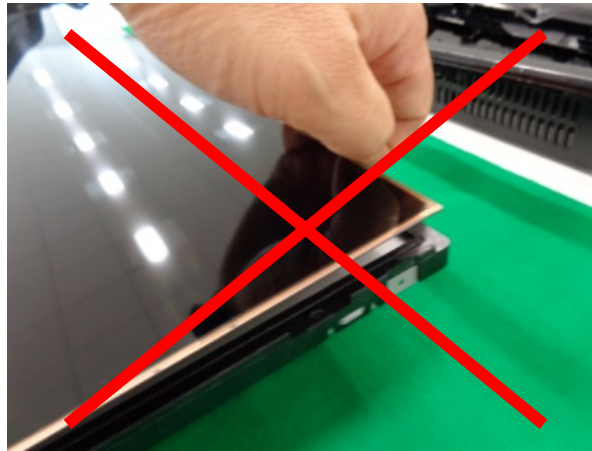
### PROCEDURE TO REMOVAL OF FRONT BEZEL

#### < Caution >

\* Don't open O-Cell of Panel



\*\* Don't lift up O-Cell of Panel



\*\*\* Don't touch COF of the panel



#### < Check >

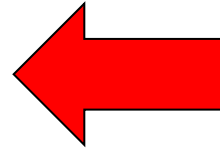
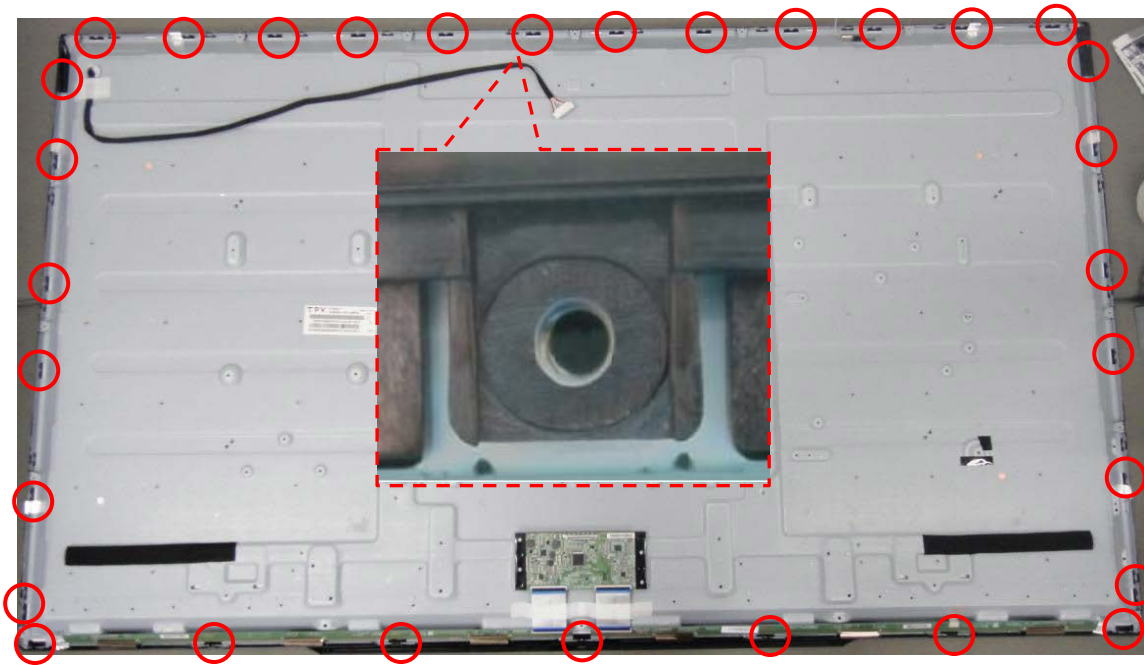
\* Don't run on the guide of panel



# 1-11. How to ass'y the Front Bezel[KDL-55W650D UC2/LA1]

## PROCEDURE TO REMOVAL OF FRONT BEZEL

Fix all the screws that secure the Front bezel.



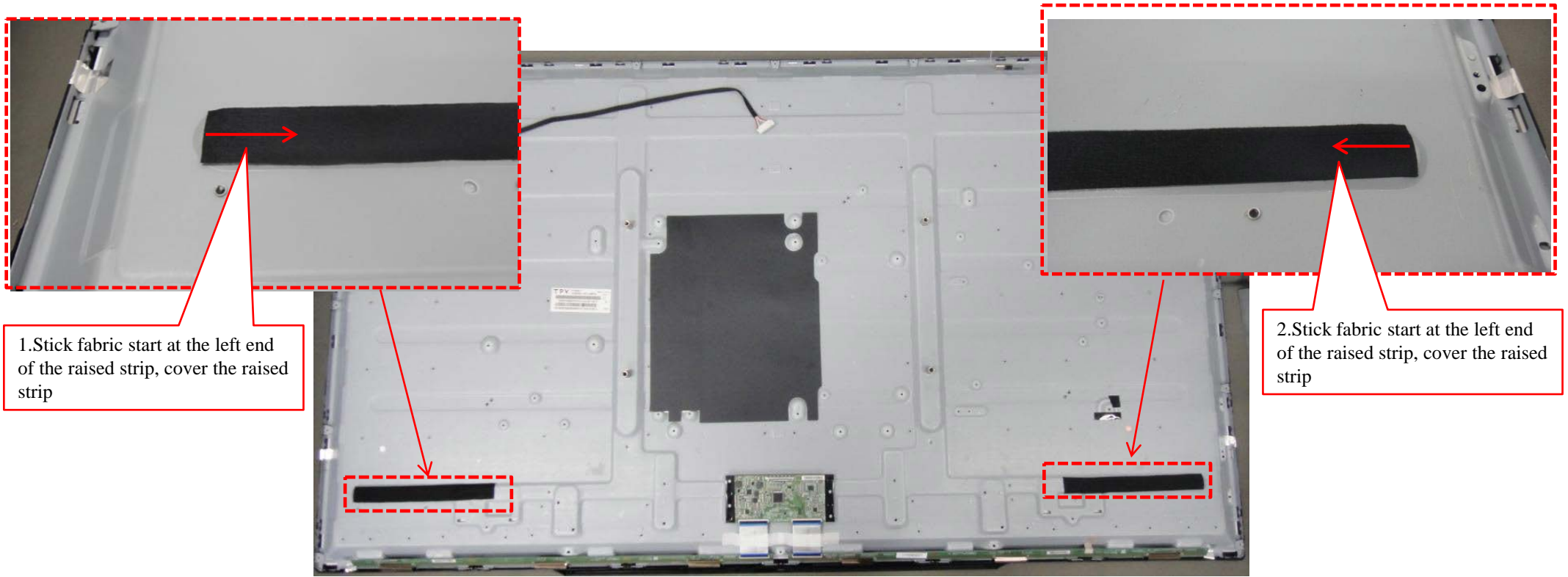
**Front bezel**



**Cell**



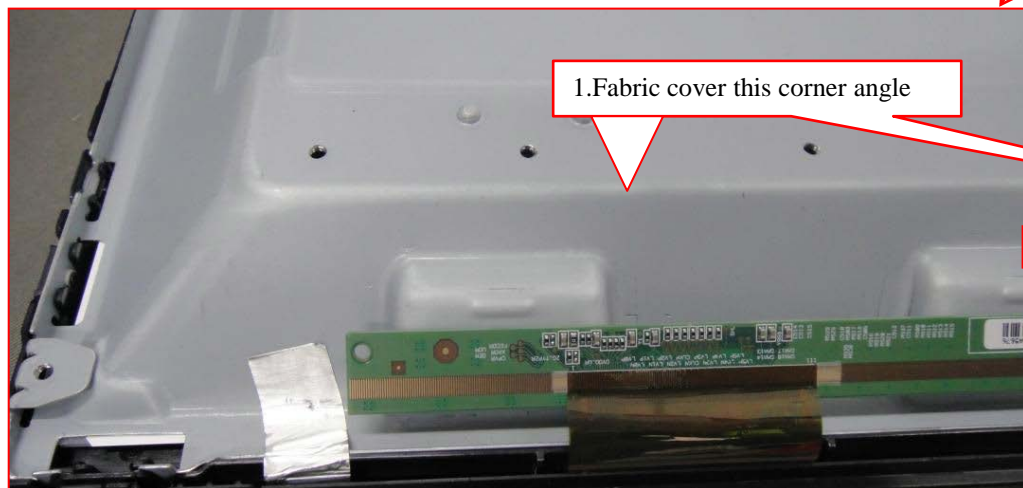
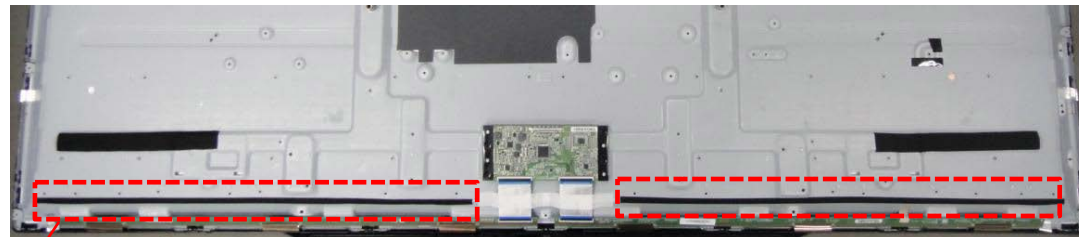
## 1-12. How to assemble the Himeron Countermeasure on panel[KDL-55W655D]



Item	Part number	Description(L*W )(mm)	Qty	Remark
1	4-595-232-01	CUSHION 180 X 20	2	PANEL

**CAUTION:** MUST APPLY HIMERON TAPE before assemble Panel if NOT AVAILABLE

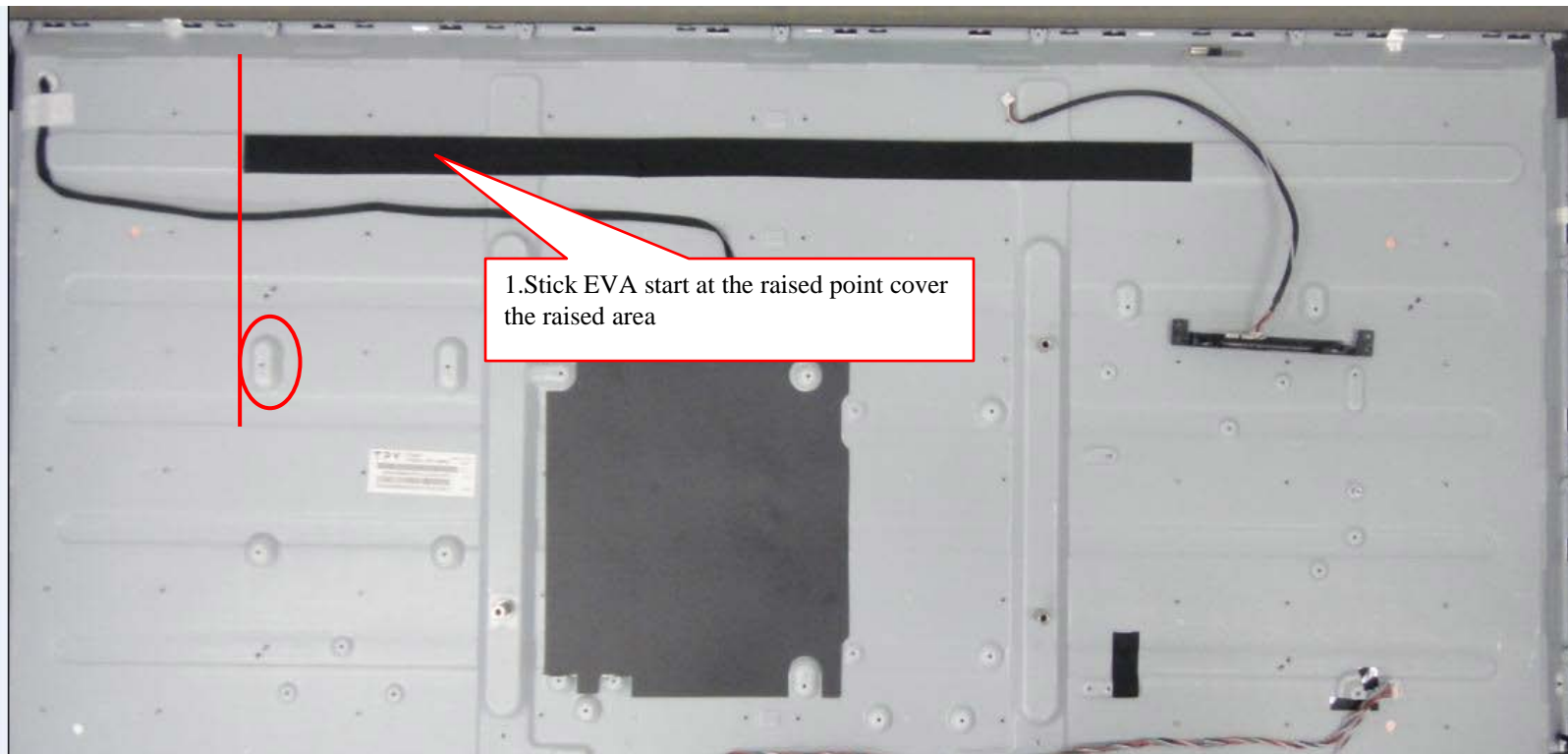
## 1-12. How to assemble the Himeron Countermeasure on panel[KDL-55W655D]



Item	Part number	Description(L*W )(mm)	Qty	Remark
1	4-595-235-01	CUSHION 490 X 8	2	PANEL

**CAUTION:** MUST APPLY HIMERON TAPE before assemble Panel if NOT AVAILABLE

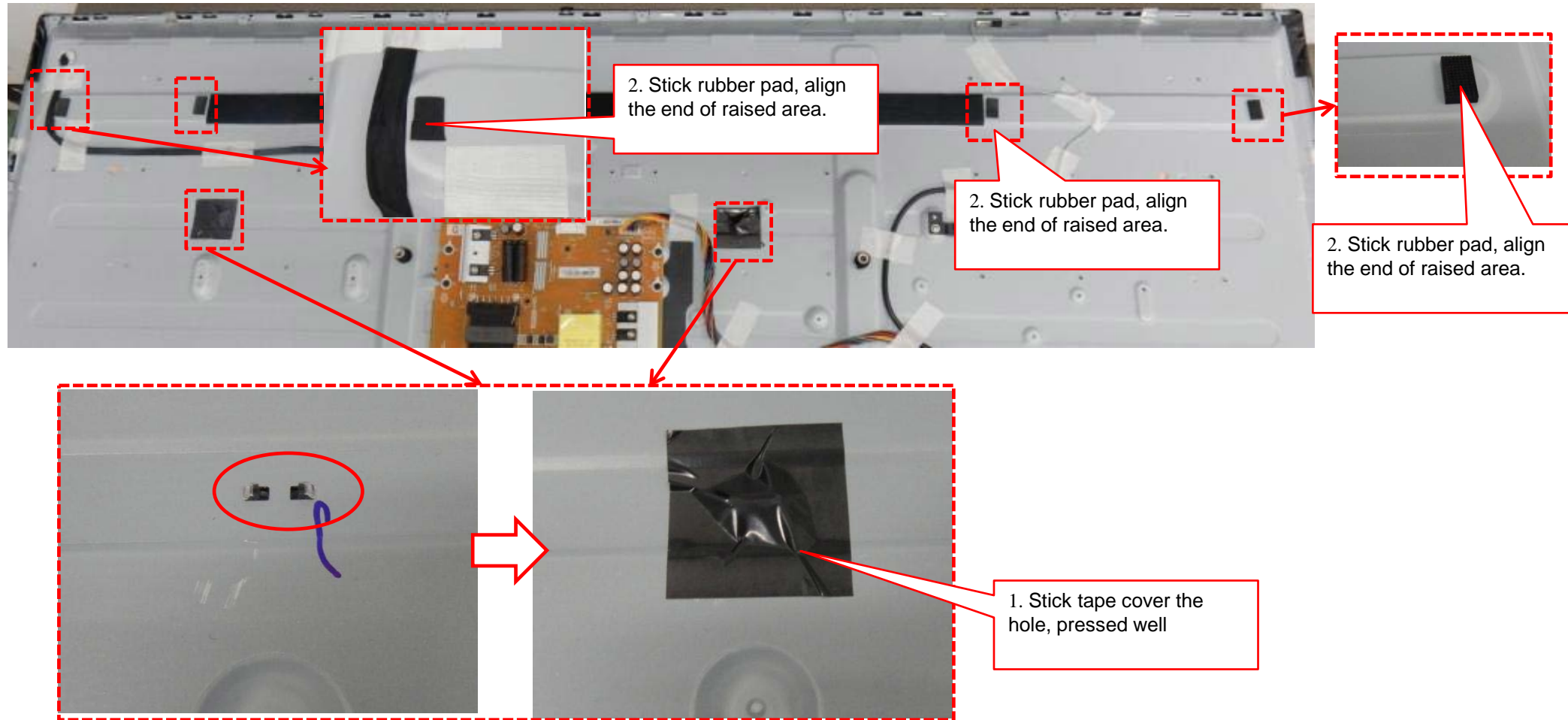
## 1-12. How to assemble the Himeron Countermeasure on panel[KDL-55W655D]



Item	Part number	Description(L*W )(mm)	Qty	Remark
1	4-595-231-01	CUSHION 720 X 30	1	PANEL

**CAUTION:** MUST APPLY HIMERON TAPE before assemble Panel if NOT AVAILABLE

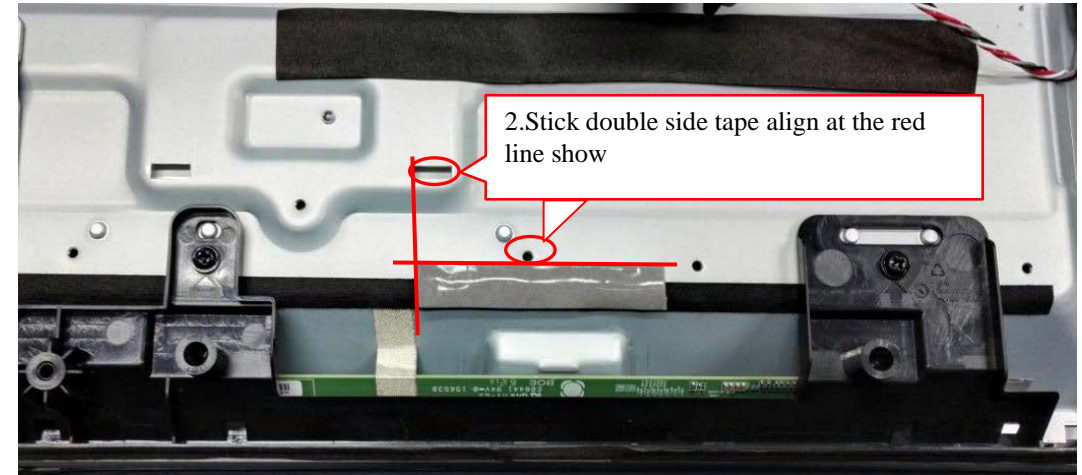
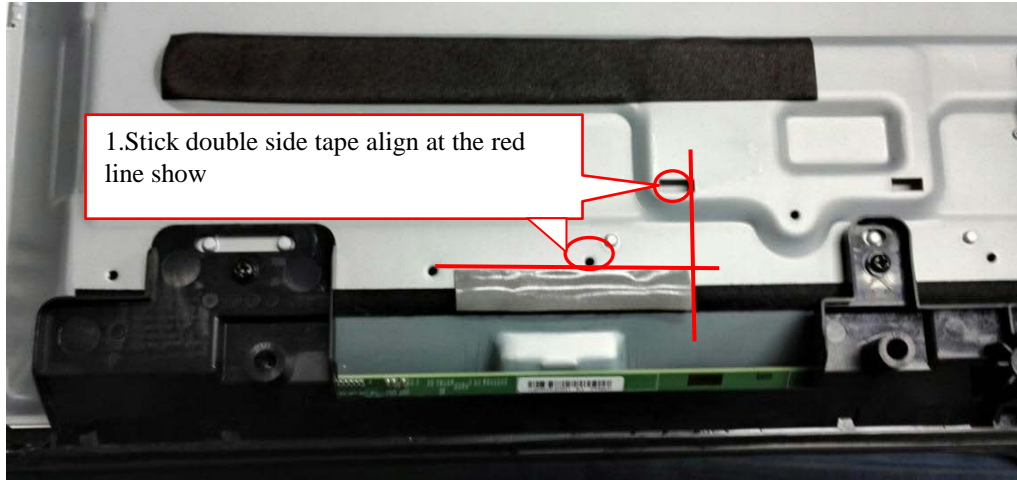
## 1-12. How to assemble the Himeron Countermeasure on panel[KDL-55W655D]



Item	Part number	Description(L*W )(mm)	Qty	Remark
1	4-596-880-01	CUSHION 16 X 10	4	Rubber PAD
2	4-596-039-01	MYLAR 40X40	2	TAPE

**CAUTION:** MUST APPLY HIMERON TAPE before assemble Panel if NOT AVAILABLE

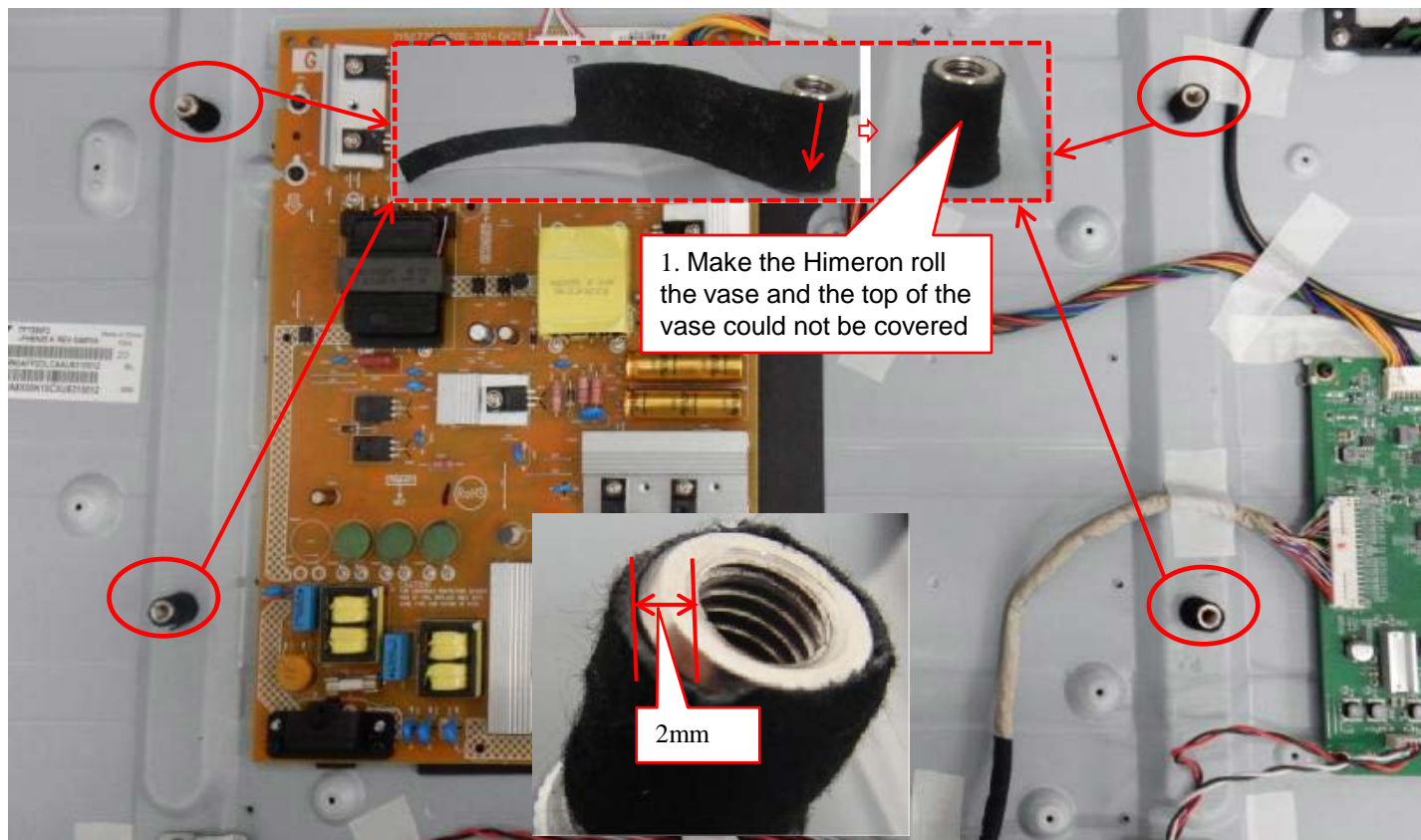
## 1-12. How to assemble the Himeron Countermeasure on panel[KDL-55W655D]



Item	Part number	Description(L*W )(mm)	Qty	Remark
1	4-684-835-01	DOUBLE SIDE TAPE 70 X 12	1	Speaker
2	4-684-835-01	DOUBLE SIDE TAPE 70 X 12	1	Speaker

**CAUTION:** MUST APPLY HIMERON TAPE before assemble Panel if NOT AVAILABLE

## 1-12. How to assemble the Himeron Countermeasure on panel[KDL-55W655D]



Item	Part number	Description(L*W )(mm)	Qty	Remark
1	4-596-879-01	CUSHION 77 X 12	4	Hex-screws

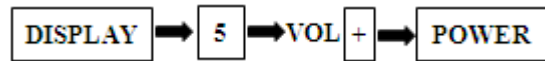
**CAUTION:** MUST APPLY HIMERON TAPE before assemble Panel if NOT AVAILABLE

# SEC 2. ADJUSTMENT-KDL-55W650D

## HOW TO ENTERING SERVICE MODE

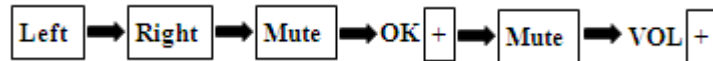
### 1) standby mode

- a. Turn on the main power switch to place this set in standby mode.
- b. Press the buttons on the remote commander as follows, and entering service mode.



### 2) power on mode

- a. Turn on the main power switch to place this set in Power on mode.
- b. Press the buttons on the remote commander as follows, and entering service mode.



### service mode display

```
Service Mode
Status Information          >>
Self diagnosis history     >>
Wide Band Tuning          >>
Panel Selection            <[ 27_LVB550FHB ]>
STATUS 1st Tu Infor       >>
LVDS Spectrum(%)         <[ 30 ]>
SERIAL NUMBER EDIT        4050013
MODEL NAME EDIT           KDL-55W650D
TEST RESET                <[ OFF ]>
UART Selection            <[ Factory ]>
Tu Data for serv          >>
SDB Service Menu          >>
White Balance             >>
Aging Mode                <[ Off ]>
Tuner Detection           >>
LVDS Driver Strength      <[ 4 ]>
ATMOS CEC DISABLE        <[ 0 ]>

[</>Set[Home]Exit
```

When replace Main Board or panel, please confirm " SERIAL NUMBER EDIT " and "MODEL NAME EDIT" in service mode.  
If they are different, please select a suitable thing.

3) How to use the remote commander.

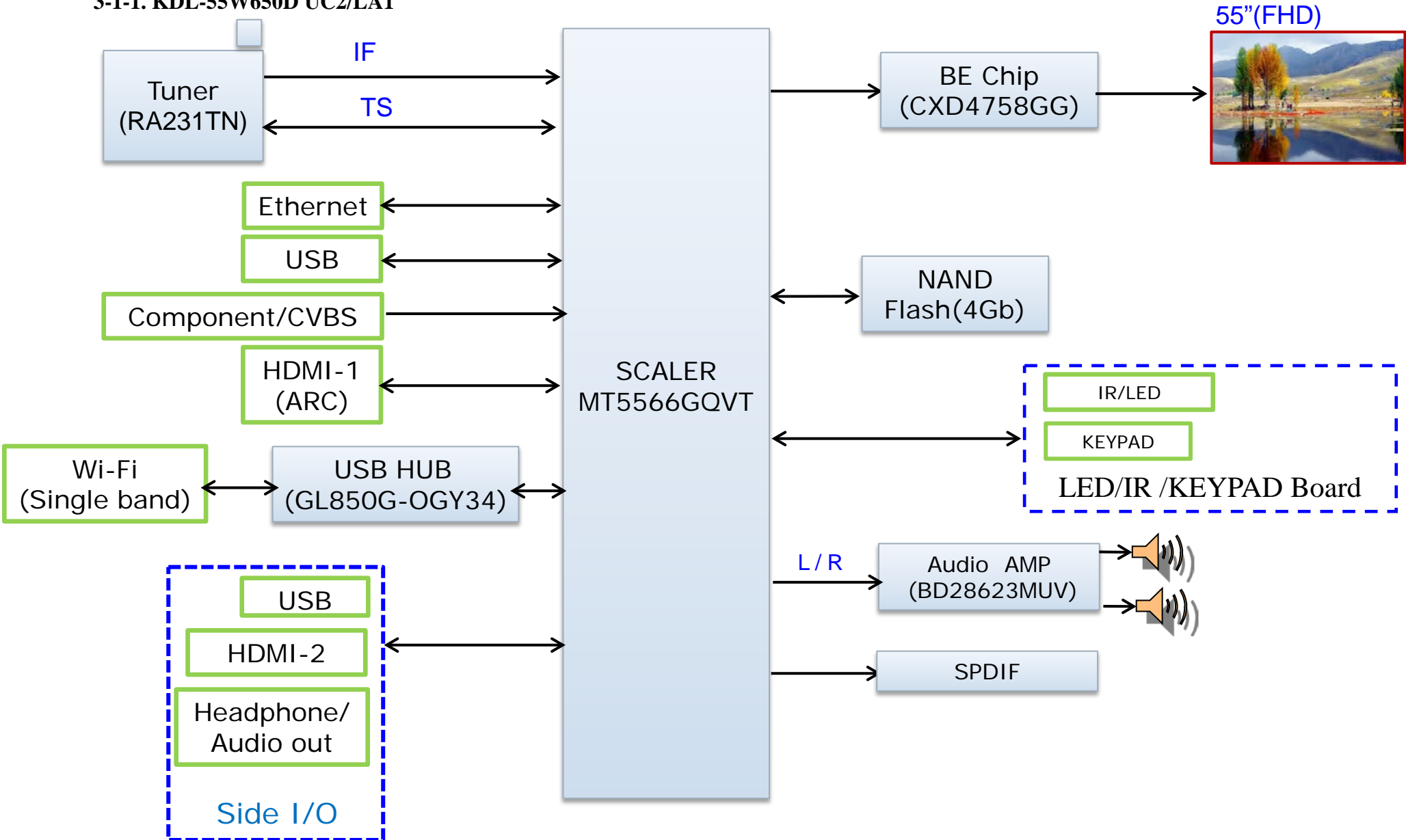
Function	The flow of control
Service mode on	1)<DISPLAY><5><VOL+><Power> 2)<Left><Right><Mute><Ok><Mute><VOL+>
Service mode off	<RETURN>/<Power off-on>
Adjustment Item up / down	↑ / ↓
Data Value up / down	← / →

4) After entering service mode, then turn off the power switch.

# SEC 3. DIAGRAMS AND CHASSIS STRUCTURE

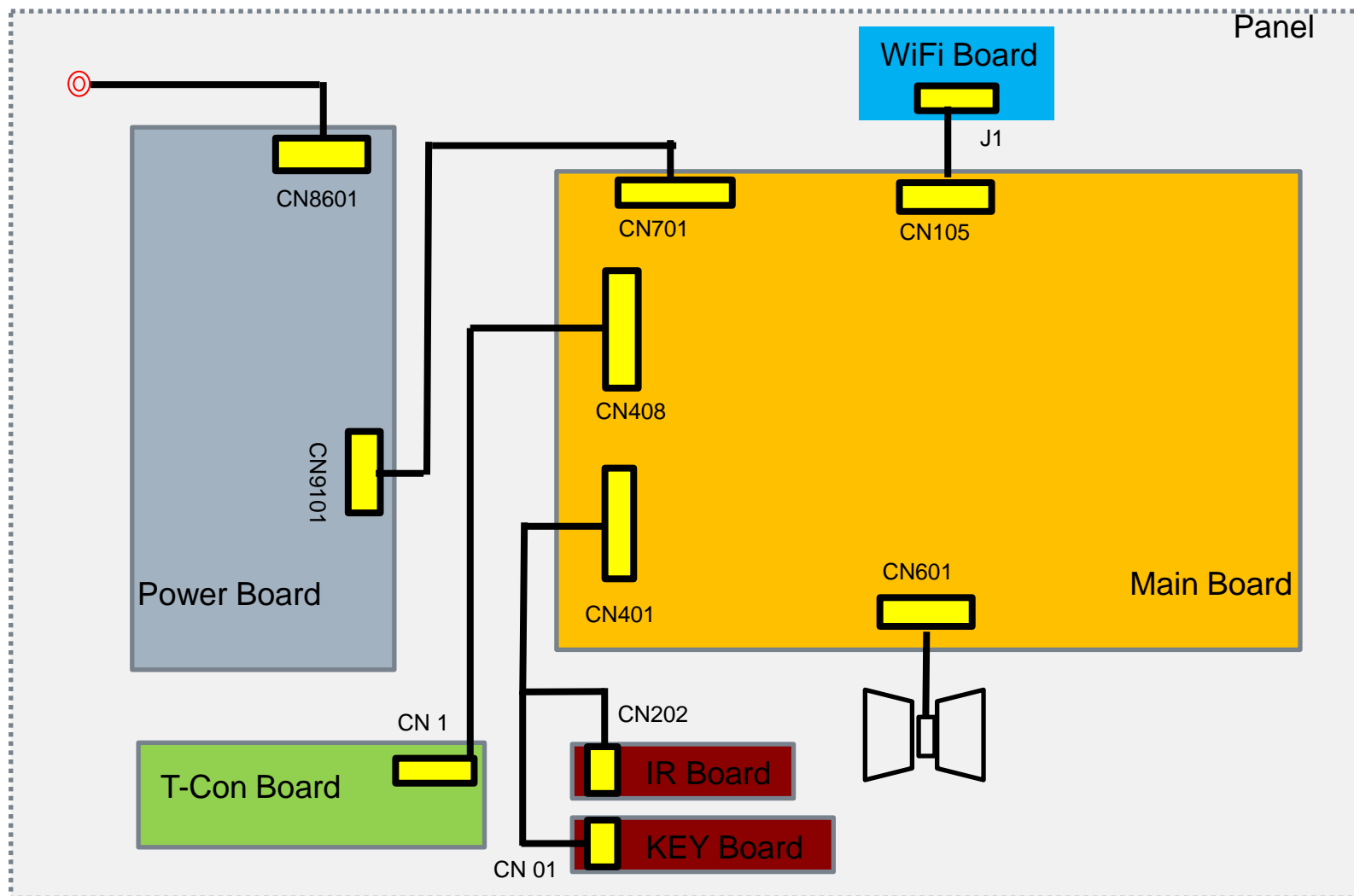
## 3-1. BLOCK DIAGRAM

### 3-1-1. KDL-55W650D UC2/LA1



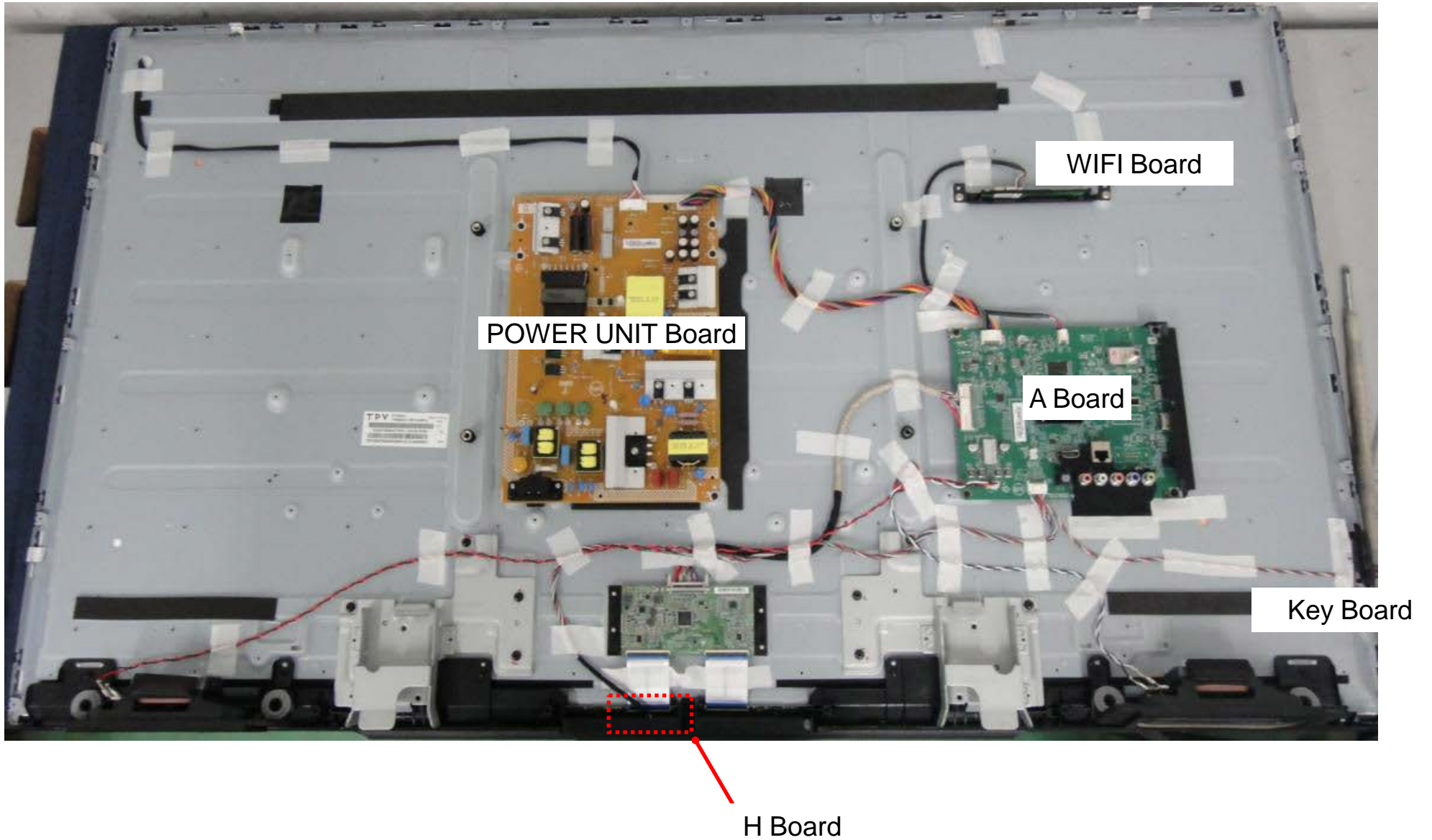
### 3-2. CONNECTOR DIAGRAM

#### 3-2-1. KDL-55W650D UC2/LA1



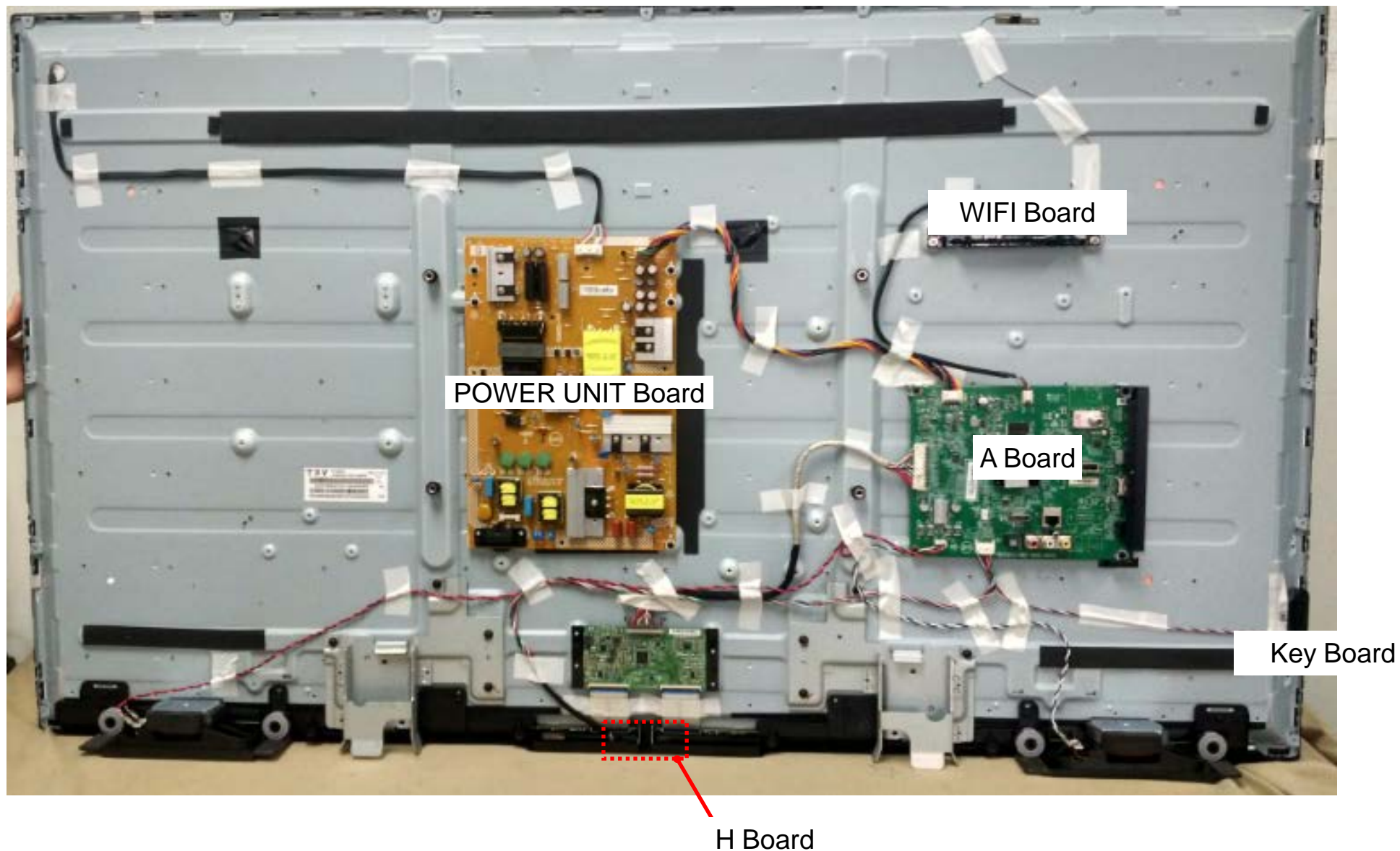
### 3-3. CIRCUIT BOARDS LOCATION

#### 3-3-1. KDL-55W650D UC2



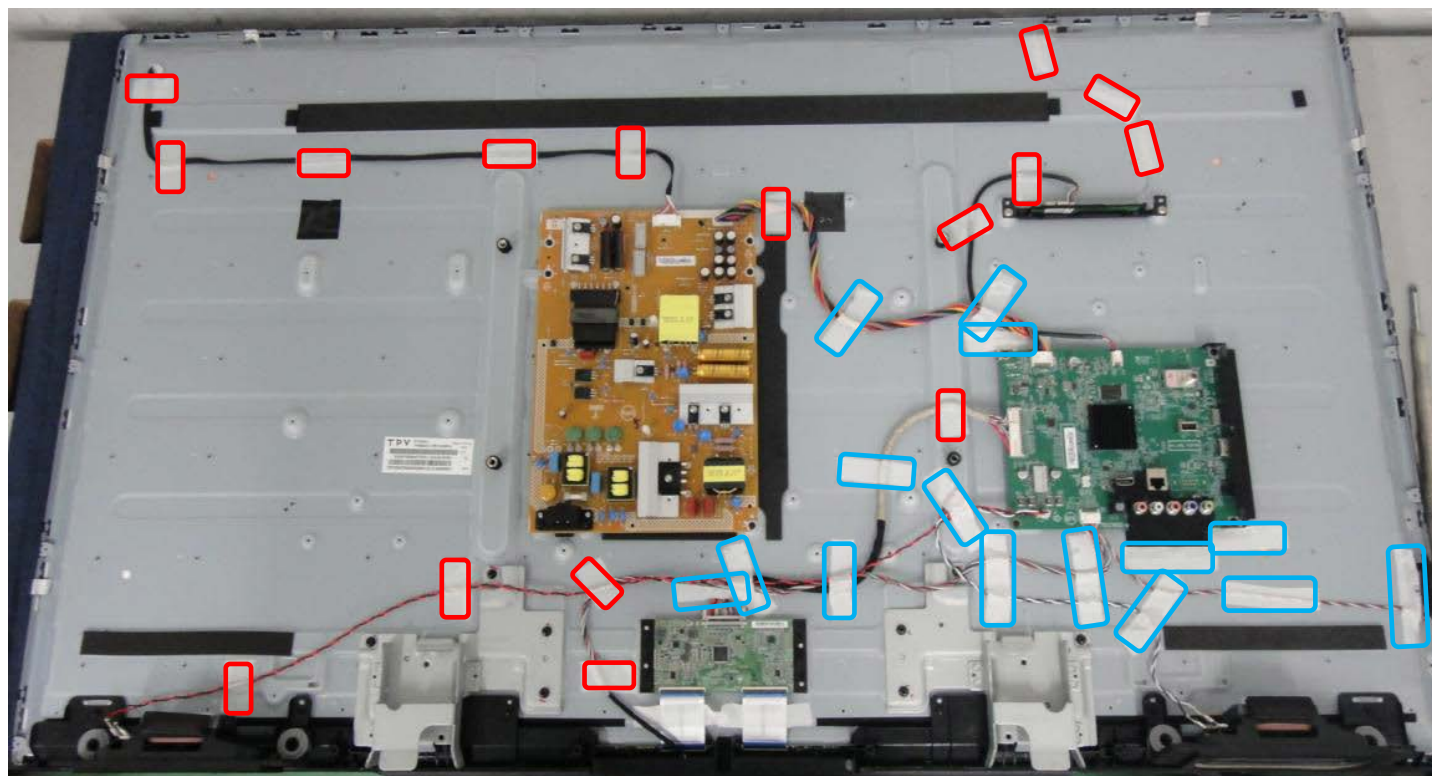
### 3-3. CIRCUIT BOARDS LOCATION

#### 3-3-2. KDL-55W650D LA1



### 3-4. Tape location

#### 3-4-1. KDL-55W650D UC2



**TAPE SIZE:**

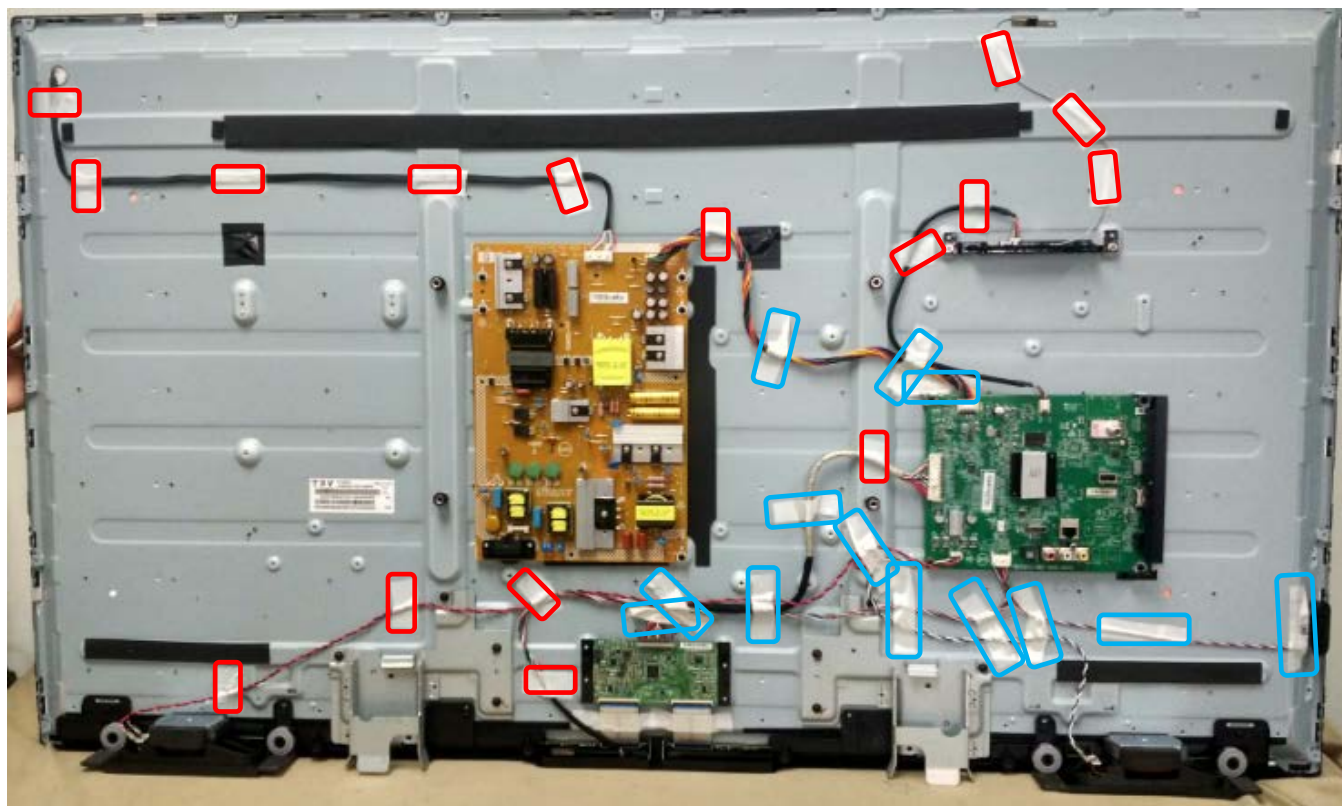
**KDL-55W650D UC2:**  25MM\*50MM

 20MM\*80MM


**The purpose for the tape stick is to make the cables fixed.**

### 3-4. Tape location

#### 3-4-2. KDL-55W650D LA1



**TAPE SIZE:**

**KDL-55W650D LA1:**  25MM\*50MM

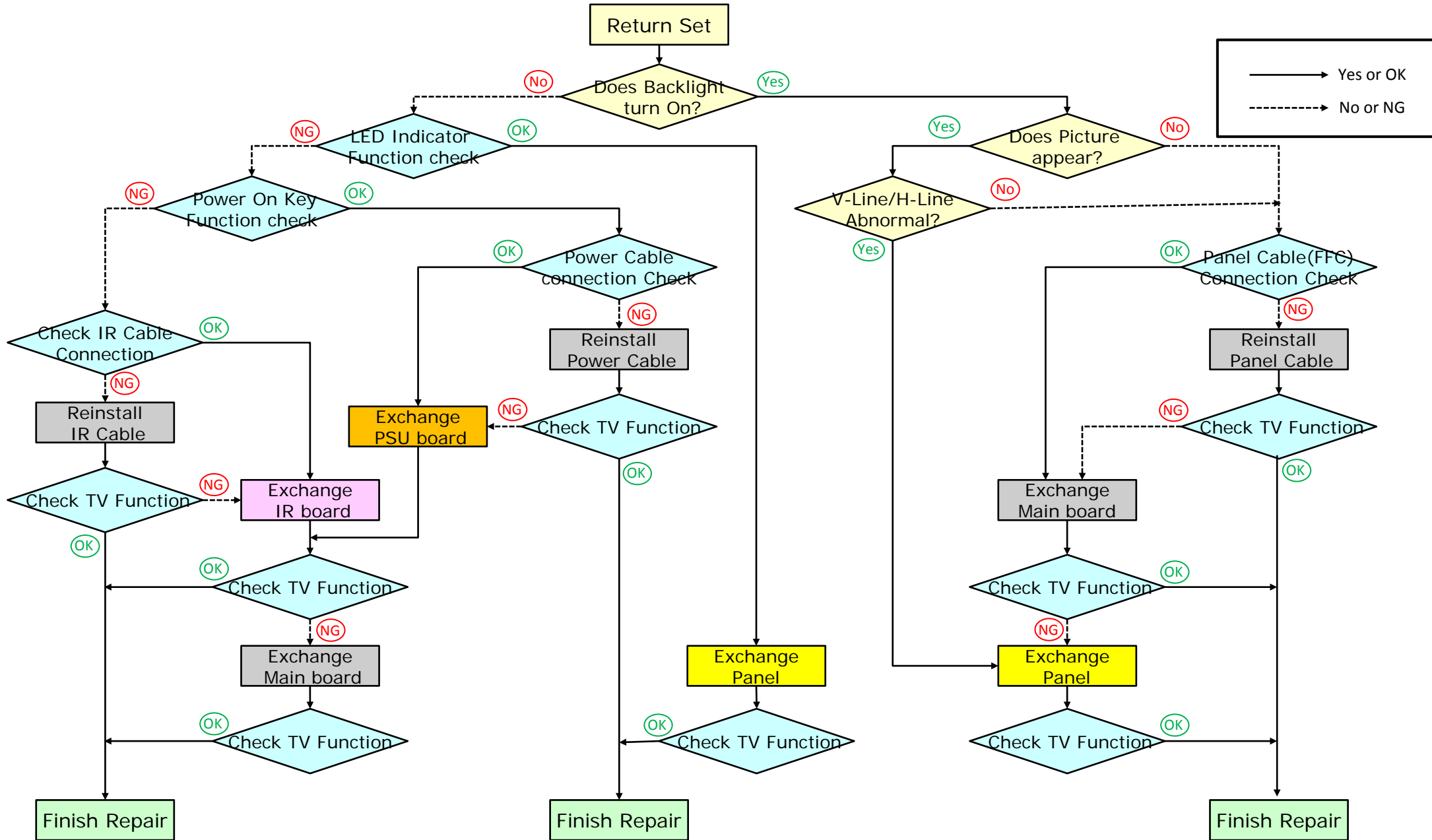
 20MM\*80MM

**The purpose for the tape stick is to make the cables fixed.**

**END**

---

# APPENDIX-1 Trouble analysis flow



# APPENDIX-2 Software data update

## Software data update for Engineering PKG

**The confirmation of the software version of the TV set.**

product information of setting menu.

[HOME] , [Settings] , [Customer Support]

Please use the latest software.

1: KDL-55W650D

1. Model Name

2: V4.003

2. Software Version

## Software Down load

store the software Package to USB memory. (Applicable USB memory : Format by FAT32, USB2.0 type )

If the software file is compressed(.zip), please unzip it.

For USB, please store **only one file** for software update.

KDL-55W650D UC2/LA1

**sony\_fw\_2016\_4003\_TRUSA.pkg**

## Software update by USB memory

1. Prepare USB memory with update file.
2. Set TV AC OFF , Insert USB memory.



3. Press and hold Power Tact Key for 5s while AC ON TV.

If valid file is found, LED change UPDATE mode (Orange is Blink-1sec On / 1sec Off ) few second later.

From now, all key & Remote are not allowed (no response) until update finish.

Orange LED is flushing. (1~2min)



4. After finish update, TV Set will turn-on automatically. Lights up Green LED .



### Confirm Software version

**Please confirm whether it is the latest software.  
product information of setting menu.**

[HOME] , [Settings] , [Customer Support]

---

## Software data update for OND PKG

### The confirmation of the software version of the TV set.

product information of setting menu.

[HOME] , [Settings] , [Customer Support]

Please use the latest software.

1: KDL-55W650D

1. Model Name

2: V4.003

2. Software Version

## Software Down load

store the software Package to USB memory. (Applicable USB memory : Format by FAT32, USB2.0 type )

If the software file is compressed(.zip), please unzip it.

For USB, please store **only one file** for software update.

KDL-55W650D UC2/LA1

**sony\_dtv02B30B08B3B8\_00104301**

## Software update by USB memory

1. Turn on the TV.

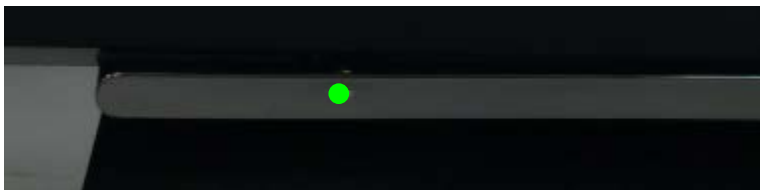
2. Connect USB memory.



3. Update from Menu

Menu → Settings → Customer Support  
→ Software update → Select "OK".

1) Lights up Green LED. (no picture)



2) Starting update

Orange LED is flashing. (2-3min)



3) Finish update

Lights up Green LED again and TV is turned on.



5. Unplug AC power cord and disconnect USB memory.

6. Plug the AC power cord then turn on the TV.

### Confirm Software version

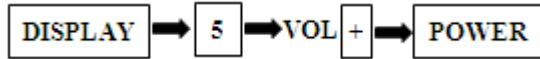
**Please confirm whether it is the latest software.  
product information of setting menu.**

[HOME] , [Settings] , [Customer Support]

# APPENDIX-3 Operation Time, Boot Count, Panel Operation Time

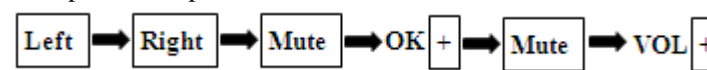
## [To Bring Up Self Diagnostic(SELF CHECK)]

In standby mode, press buttons on



the remote commander sequentially in rapid succession as shown below:

Or in power on , press buttons on



## [Operation Time, Boot Count, Panel Operation Time Screen]

Service Mode

```

      Status Information          >>
      Self diagnosis history      >>
      Wide Band Tuning           >>
      Panel Selection             <[ 27_LVB550FHB ]>
      STATUS 1st Tu Infor        >>
      LVDS Spectrum(%)          <[ 30 ]>
      SERIAL NUMBER EDIT         4050013
      MODEL NAME EDIT            KDL-55W650D
      TEST RESET                 <[ OFF ]>
      UART Selection             <[ Factory ]>
      Tu Data for serv           >>
      SDB Service Menu          >>
      White Balance              >>
      Aging Mode                 <[ Off ]>
      Tuner Detection            >>
      LVDS Driver Strength       <[ 4 ]>
      ATMOS CEC DISABLE          <[ 0 ]>

      [ </>Set[Home]Exit
    
```

SELF CHECK

```

      BACK                        <<
      002 MAIN_POWER              000
      003 AUD_ERR                 000
      004 PANEL_POWER_ERR         000
      005 PANEL_I2C_COMM_ERR      000
      006 BACKLIGHT_ERR          000
      000 BE_I2C                 000
      000 TU_DEMOD                000

      00011 - 00053 - 00011
      [Home] Exit
    
```

Panel operation time by hour
Boot count
Total operation time by hour

You can check the TV set operation time, boot count and panel operation time in service menu although this model doesn't support self-diagnostics. After you have completed the repairs, clear the result display to "0".

### Clearing the Self Check Diagnostic List

- Panel operation time :  
Press the Channel 7 and then press the Channel 0 to clean the Panel operation time.

### Exiting the Self-diagnostic screen

To exit the Self Diagnostic screen, turn off the power to the TV by pressing the POWER button on the remote or the POWER button on the TV.

# APPENDIX-4 Edit MODEL NAME and Serial Number

## Edit: MODEL NAME

If the user select this menu, the below editing menu is appeared and adjusting it like "Program Labels" editing way.

XXX-XXXXXXX,

"X" part can change in below way by Remote Commander. Press up/down arrow key to scroll character ("A-Z", "0-9", "\_") and press right arrow key to move the next position.

These number should be affected to "Product Information" in Setting Menu

\* After user input data , press <Enter> will pop dialog to inform user to confirm data (Input data correct ?)

\* Once data confirm and save into EEPROM , gray out this item , user will not able to adjust

## Edit: Serial Number

When you select the SERIAL NUMBER EDIT item in the service mode, use right key to enter edit mode.

SERIAL NUMBER EDIT           0000001

Use the up and down key to edit the first bit of the SERIAL NUMBER (0~9)。

Use the left and right key to switch bit.

SERIAL NUMBER EDIT           0000001

\* After user input data , press <Enter> will pop dialog to inform user to confirm data (Input data correct ?)

\* Once data confirm and save into EEPROM , gray out this item , user will not able to adjust

Function	The flow of control
Service mode on	1) <DISPLAY><5><VOL+><POWER>
	2)<Left><Right><Mute><Ok><Mute><VOL+>
Service mode off	<RETURN> / <Power off-on>
Adjustment Item up / down	↑ / ↓
Data Value up / down	← / →

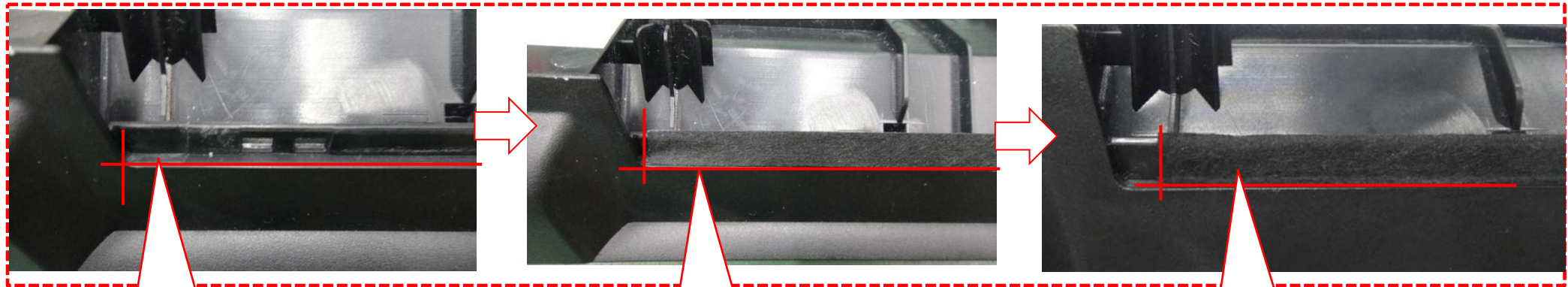
# APPENDIX-5 Assembly parts

## 1.Stick HIMERON on the Deco.

Step 1: tick HIMERON on the one side of Deco.

1.If the fabric over the deco, flod it to inside of deco

2.If the fabric over the deco, flod it to inside of deco

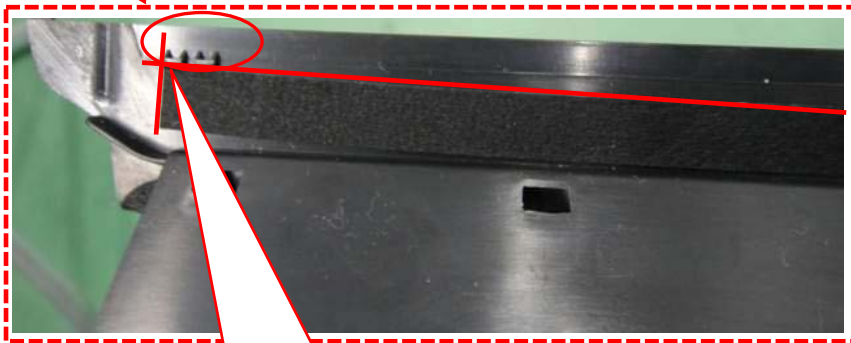


Fabric stick on this two surface

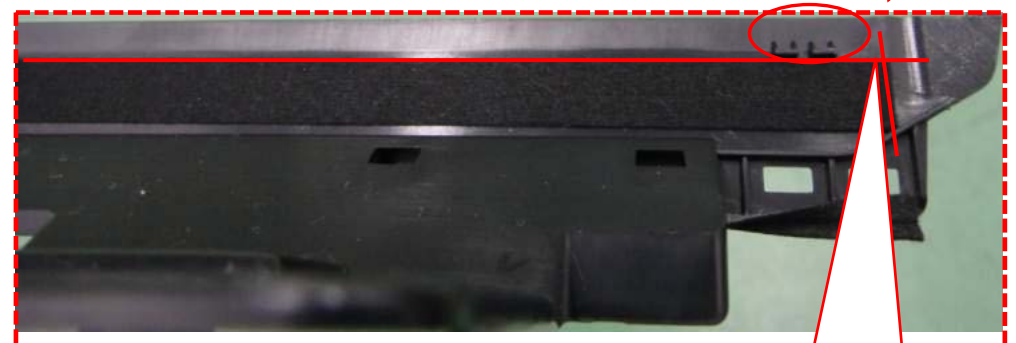
Fabric align at this edge

Press the fabric, make sure it stick on the two side. Don't over the edge.

**Step 2: Stick HIMERON on the other side of Deco.**



1. Stick fabric align the red line.

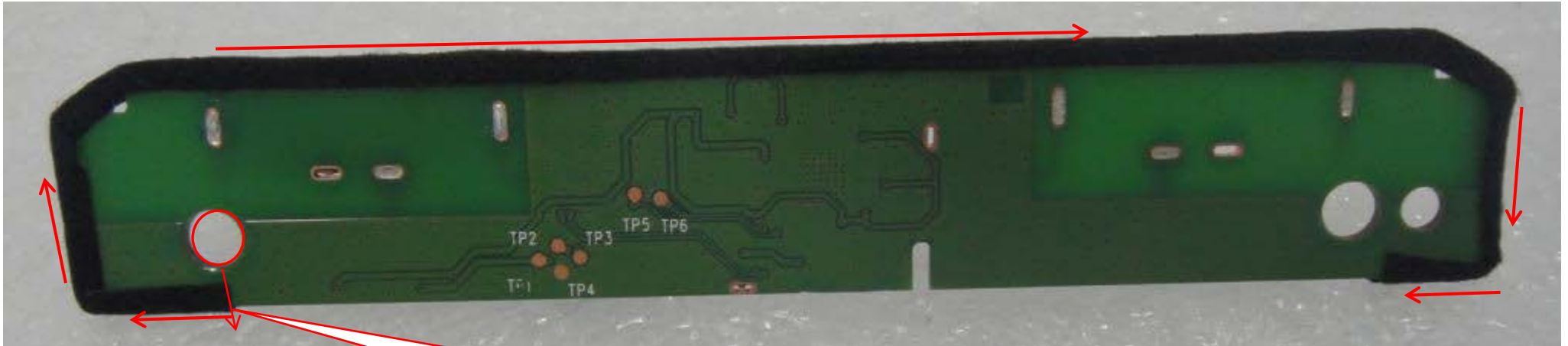


2. Stick fabric align the red line.

Item	Sony PN	Description	Qty	Remark
1	4-592-419-01	Deco	1	DECO Assy
		CUSHION 490 X 8	4	

**CAUTION:** MUST APPLY HIMERON TAPE before assemble Panel if NOT AVAILABLE

**3. Stick HIMERON on the of WIFI board assy.**

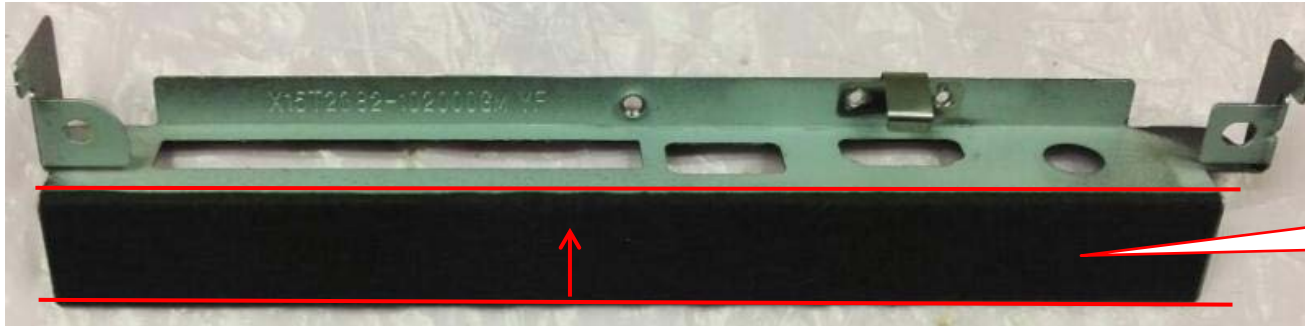


1. Stick fabric start at this hole, cover the top of board

Item	Sony PN	Description(L*W )(mm)	Qty	Remark
2	1-895-960-11	WIFI BOARD	1	WIFI BOARD Assy
		CUSHION 145 X 5	1	

**CAUTION:** MUST APPLY HIMERON TAPE before assemble Panel if NOT AVAILABLE

**4. Stick HIMERON Side IO BKT.**

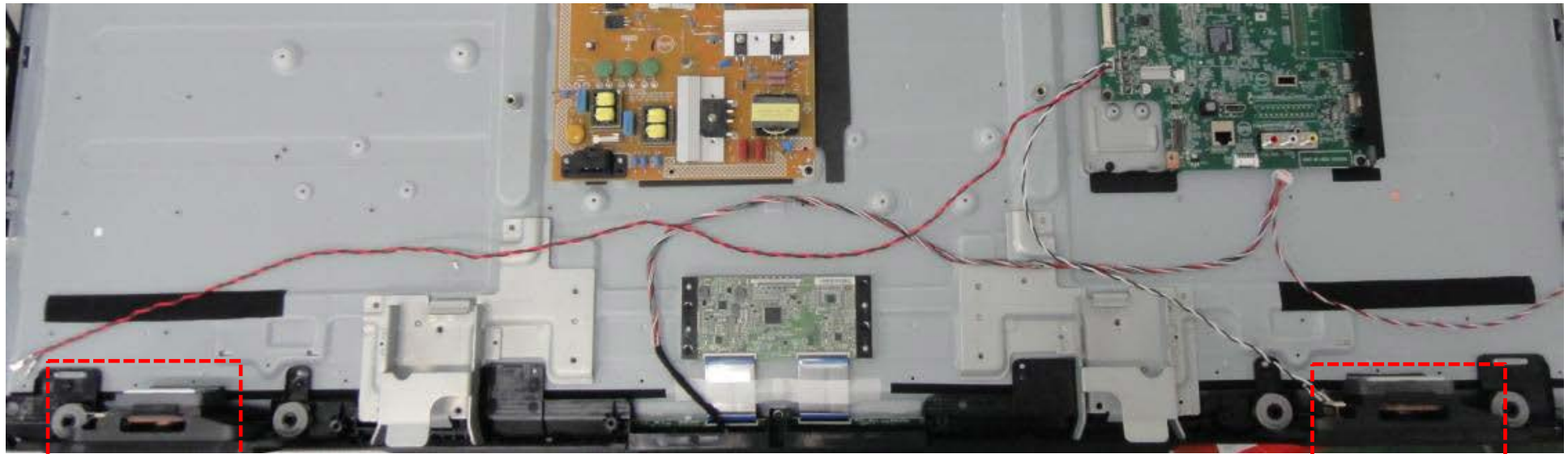


3. Stick fabric align at the bottom side

Item	Sony PN	Description	Qty	Remark
3	4-571-385-01	Side IO BKT	1	Side IO BKT Assy
		CUSHION 150 X 17 x 0.3	1	

**CAUTION:** MUST APPLY HIMERON TAPE before assemble Panel if NOT AVAILABLE

5.Stick EVA on the of Speakers (left and right speaker).



1.Stick EVA at center of magnet at the upside



Item	Sony PN	Description	Qty	Remark
4	1-859-187-11	CUSHION 50 X 15	1	Speaker Assy
		Speakers	1	

**CAUTION:** MUST APPLY HIMERON TAPE before assemble Panel if NOT AVAILABLE

6. Stand Assy



Item	Part Number	Description	Qty	Remark
5	A-2123-138-A	BASE	1	Stand Assy
		BASE_LEFT N/A	1	
		BASE_LEFT N/A	1	
		BASE_RIGHT N/A	1	
		BASE_RIGHT N/A	1	
		FOOT PAD	4	
		BKT_BASE	1	
		BKT_STAND_R	1	
		BKT_STAND_L	1	
		DIE-CASTING_Bracket_R	1	
		DIE-CASTING_Bracket_L	1	
		SCREW	4	
		NON-WOVEN FABRIC	2	
		PROTECT BAG 850*400	1	

7. Key module



Item	Part Number	Description	Qty	Remark
6	1-895-957-11	Key cover	1	Key module
		Key pad	1	
		Key board	1	

# APPENDIX-6 Select Panel Type

## Select: Panel Type

1.Entering **Service Mode**

2.Select “**Panel Selection**”

Please check TV set s/n and set the panel selection item correctly

If TV s/n is 4,000,001-4,024,851, please ensure the item set to “27\_LVB550FHB”.

If TV s/n is 4,024,852-4,300,000, please ensure the item set to “26\_LVG550DUY”.

3. Use the **left and right key on RC** to select Panel Type.

```

Service Mode
Status Information          >>
Self diagnosis history     >>
Wide Band Tuning          >>
Panel Selection            <[ 27_LVB550FHB ]>
STATUS 1st Tu Infor       >>
LVDS Spectrum(%)         <[ 30 ]>
SERIAL NUMBER EDIT        4050013
MODEL NAME EDIT           KDL-55W650D
TEST RESET                <[ OFF ]>
UART Selection            <[ Factory ]>
Tu Data for serv          >>
SDB Service Menu         >>
White Balance             >>
Aging Mode                <[ Off ]>
Tuner Detection           >>
LVDS Driver Strength      <[ 4 ]>
ATMOS CEC DISABLE        <[ 0 ]>

[</>Set[Home]Exit
  
```

Make sure the panel selection is in right setting after main board replacement.

Panel	Model Name	Product Code	Serial number
BOE	KDL-55W650D UC2	18747900	4,000,001-4,024,851
LGD	KDL-55W650D UC2	18747900	4,024,852-4,300,000

KDL-55W650D UC2	First Panel(BOE)	Second Panel(LGD)
<b>Panel Type</b>	27_LVB550FHB	26_LVG550DUY
<b>Panel P/N</b>	A-2123-136-A	A-2178-977-A
<b>PSU P/N</b>	1-895-965-11	1-897-087-11

**Caution 1:** This adjustment step for panel selection is mandatory check item after main board replacement.

**Caution 2 :** Please make sure the power board is matched with the panel brand when panel replacement.