

## HISTORY INFORMATION FOR THE FOLLOWING MANUAL:

# *SERVICE MANUAL*

**ORIGINAL MANUAL ISSUE DATE: 5/2014**

Chassis Name : RB2TP  
Segment Name : MB

<b>Version</b>	<b>Date</b>	<b>Subject</b>
1.0	5/2014	Original manual issue.

**LCD Digital Color TV**

**SONY®**

# MODEL LIST

---

<u>MODEL</u>	<u>COLOR</u>	<u>COMMANDER</u>	<u>DEST.</u>
<b>KDL-32R330B</b>	<i>Black</i>	<i>RM-YD092</i>	<i>America</i>
<b>KDL-40R380B</b>	<i>Black</i>	<i>RM-YD092</i>	<i>America</i>

<u>MODEL</u>	<u>COLOR</u>	<u>COMMANDER</u>	<u>DEST.</u>
--------------	--------------	------------------	--------------

# Table of content

<b>Description</b>	<b>Page</b>
<i>WARNINGS AND CAUTIONS</i> .....	4
<i>USE CAUTION WHEN HANDLING THE LCD PANEL</i> .....	5
<i>SAFETY CHECK-OUT</i> .....	6
<i>SELF DIAGNOSIS FUNCTION</i> .....	8
<i>SERVICE POSITION</i> .....	9
<i>SEC 1. DISASSEMBLY AND PARTS LIST</i> .....	11
<i>1-1. KDL-32R330B</i> .....	12
<i>1-1-1. BASE STAND</i> .....	12
<i>1-1-2. REAR COVER</i> .....	13
<i>1-1-3. POWER BOARD, A BOARD AND SPEAKER</i> .....	14
<i>1-1-4. LCD PANEL, DECO and COVER, BOTTOM</i> .....	15
<i>1-1-5. MISCELLANEOUS</i> .....	16
<i>1-2. KDL-40R380B</i> .....	17
<i>1-2-1. BASE STAND</i> .....	17
<i>1-2-2. REAR COVER</i> .....	18
<i>1-2-3. POWER BOARD, A BOARD AND SPEAKER</i> .....	19
<i>1-2-4. LCD PANEL, DECO and COVER, BOTTOM</i> .....	20
<i>1-2-5. MISCELLANEOUS</i> .....	21
<i>1-3. How to disassemble rear cover [KDL-32R330B/40R380B]</i> .....	22
<i>1-4. How to disassemble Deco [KDL-32R330B/40R380B]</i> .....	23
<i>1-5. How to disassemble LVDS cable [KDL-32R330B/40R380B]</i> .....	24
<i>1-6. How to disassemble IR Board[KDL-32R330B/40R380B]</i> ...	25
<i>1-7. How to ass'y the LED lens [KDL-32R330B/40R380B]</i> .....	26
<i>1-8. How to assemble the Himeron Countermeasure of panel [KDL-32R330B/40R380B]</i> .....	27
<i>1-8-1. KDL-32R330B</i> .....	27
<i>1-8-2. KDL-40R380B</i> .....	29

<b>Description</b>	<b>Page</b>
<i>SEC 2. ADJUSTMENT</i> .....	30
<i>SEC 3. DIAGRAMS AND CHASSIS STRUCTURE</i> .....	32
<i>3-1. BLOCK DIAGRAM</i> .....	32
<i>3-2. CONNECTOR DIAGRAM</i> .....	33
<i>3-3. CIRCUIT BOARDS LOCATION</i> .....	34
<i>3-4. Tape location</i> .....	35
<i>APPENDIX-1 Trouble analysis flow</i> .....	37
<i>APPENDIX-2 Software data update</i> .....	38
<i>APPENDIX-3 Operation Time, Boot Count, Panel Operation Time</i> .....	42
<i>APPENDIX-4 Reset and Edit Serial Number</i> .....	43
<i>APPENDIX-5 Select Panel Type</i> .....	45

# WARNINGS AND CAUTIONS - ENGLISH

---

## CAUTION

These servicing instructions are for use by qualified service personnel only.

To reduce the risk of electric shock, do not perform any servicing other than that contained in the operating instructions unless you are qualified to do so.

## WARNING!!

An isolation transformer should be used during any service to avoid possible shock hazard, because of live chassis.

The chassis of this receiver is directly connected to the ac power line.

## CARRYING THE TV

Be sure to follow these guidelines to protect your property and avoid causing serious injury.

- Carry the TV with an adequate number of people; larger size TVs require two or more people.
- Correct hand placement while carrying the TV is very important for safety and to avoid damages.

## SAFETY-RELATED COMPONENT WARNING!!

Components identified by shading and ! mark on the schematic diagrams, exploded views, and in the parts list are critical for safe operation. Replace these components with Sony parts whose part numbers appear as shown in this manual or in supplements published by Sony. Circuit adjustments that are critical for safe operation are identified in this manual.

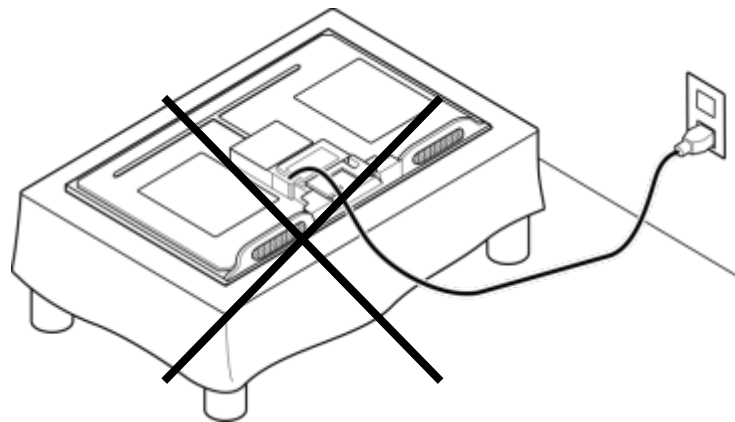
Follow these procedures whenever critical components are replaced or improper operation is suspected.

## USE CAUTION WHEN HANDLING THE LCD PANEL

When repairing the LCD panel, be sure you are grounded by using a wrist band.

When repairing the LCD panel on the wall, the LCD panel must be secured using the 4 mounting holes on the rear cover.

- 1) Do not press on the panel or frame edge to avoid the risk of electric shock.
- 2) Do not scratch or press on the panel with any sharp objects.
- 3) Do not leave the module in high temperatures or in areas of high humidity for an extended period of time.
- 4) Do not expose the LCD panel to direct sunlight.
- 5) Avoid contact with water. It may cause a short circuit within the module.
- 6) Always clean the LCD panel with a soft cloth material.
- 7) Use care when handling the wires or connectors of the inverter circuit. Damaging the wires may cause a short.
- 8) Protect the panel from ESD to avoid damaging the electronic circuit (C-MOS).
- 9) It is recommended not to exceed 1 hour of Power-On nor Burn-in period with LCD panel face down condition, in repair activity.
- 10) Disconnect the AC power when replacing the parts.(FFC cable etc.).



# SAFETY CHECK-OUT

---

After correcting the original service problem, perform the following safety checks before releasing the set to the customer:

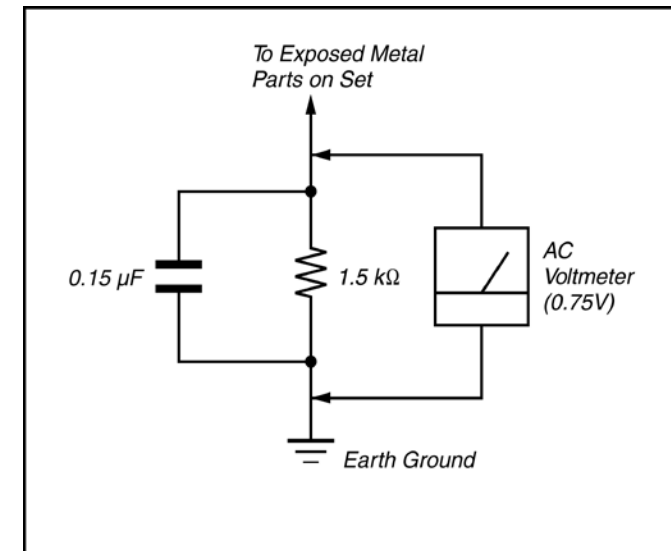
1. Check the area of your repair for unsoldered or poorly soldered connections. Check the entire board surface for solder splashes and bridges.
2. Check the interboard wiring to ensure that no wires are “pinched” or touching high-wattage resistors.
3. Check that all control knobs, shields, covers, ground straps, and mounting hardware have been replaced. Be absolutely certain that you have replaced all the insulators.
4. Look for unauthorized replacement parts, particularly transistors, that were installed during a previous repair. Point them out to the customer and recommend their replacement.
5. Look for parts which, though functioning, show obvious signs of deterioration. Point them out to the customer and recommend their replacement.
6. Check the line cords for cracks and abrasion. Recommend the replacement of any such line cord to the customer.
7. Check the antenna terminals, metal trim, “metallized” knobs, screws, and all other exposed metal parts for AC leakage. Check leakage as described below.
8. For safety reasons, repairing the Power board and/or Inverter board is prohibited.

### Leakage Test

The AC leakage from any exposed metal part to earth ground and from all exposed metal parts to any exposed metal part having a return to chassis, must not exceed 0.5 mA (500 microamperes).

Leakage current can be measured by any one of three methods.

1. A commercial leakage tester, such as the Simpson 229 or RCA WT-540A. Follow the manufacturers' instructions to use these instructions.
2. A battery-operated AC milliammeter. The Data Precision 245 digital multimeter is suitable for this job.
3. Measuring the voltage drop across a resistor by means of a VOM or battery-operated AC voltmeter. The "limit" indication is 0.75 V, so analog meters must have an accurate low voltage scale. The Simpson's 250 and Sanwa SH-63TRD are examples of passive VOMs that are suitable. Nearly all battery-operated digital multimeters that have a 2 VAC range are suitable (see Figure A).



FigureA. Using an AC voltmeter to check AC leakage.

### How to Find a Good Earth Ground

A cold-water pipe is a guaranteed earth ground; the cover-plate retaining screw on most AC outlet boxes is also at earth ground.

If the retaining screw is to be used as your earth ground, verify that it is at ground by measuring the resistance between it and a cold-water pipe with an ohmmeter. The reading should be zero ohms.

If a cold-water pipe is not accessible, connect a 60- to 100-watt trouble- light (not a neon lamp) between the hot side of the receptacle and the retaining screw. Try both slots, if necessary, to locate the hot side on the line; the lamp should light at normal brilliance if the screw is at ground potential (see Figure B).

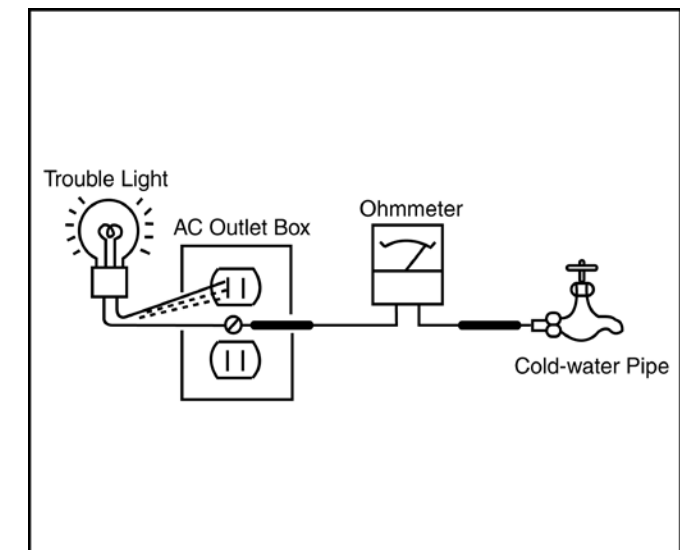


Figure B. Checking for earth ground.

# SELF DIAGNOSIS FUNCTION

---

This model doesn't support Self Diagnosis Function.

# SERVICE POSITION

As for this model, the bottom of rear cover is installed between the stand assy and the panel.  
Therefore according to the following procedure when performing adjustment and operation check after the part replacement.

## <KDL-32R330B>

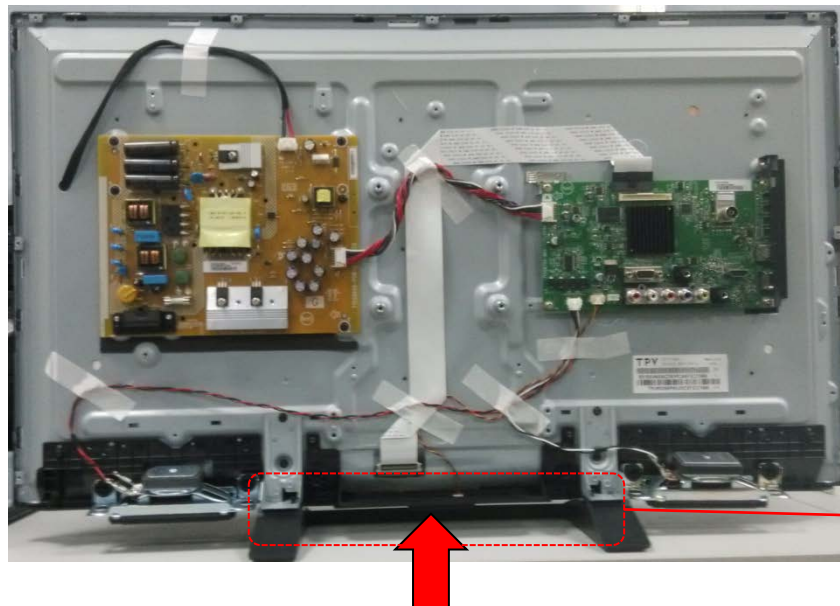
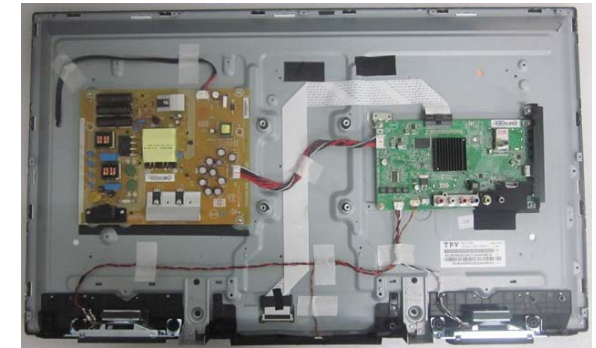
1. Remove all screws on the Stand to main unit (four screws)







2. Remove all screws on the Rear Cover to Bezel & Main Board & Bracket (thirteen screws)



3. After removing rear cover, lie down the main unit to a surface for following test/repair.



-  2-580-603-01 SCREW, +PSW M4X16
-  2-345-219-11 +B IB 3X-- CM3 (SCREW M3X6)
-  2-580-638-01 SCREW, +BVTP2 4X8
-  7-682-903-19 SCREW +PWH 3X6

**Attention:** This photo is based on Sony criteria for appearing standing the main unit after removing back cover and assembling the stand. But considering mechanical design of this models and normal service process, **it is not recommended to keep main unit standing by this status for repairing/testing at repair center.** Please pay attention for avoiding possible scratch/deformation occurred.

**Note:** Remove rear cover, then assemble the stand to main unit. This will cause the stand with main unit fit closely, scratch or deformation may occurred easily on the stand or bezel deco.

< KDL-40R380B >

1. Remove all screws on the Stand to main unit (four screws)







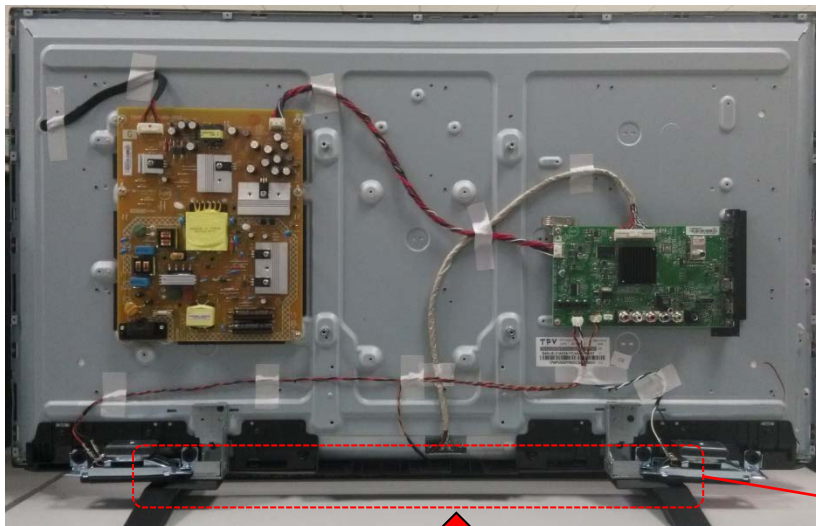
2. Remove all screws on the Rear Cover to Bezel & Main Board & Bracket (fifteen screws)



3. After removing rear cover, lie down the main unit to a surface for following test/repair.



-  2-580-603-01 SCREW, +PSW M4X16
-  2-345-219-11 +B IB 3X-- CM3 (SCREW M3X6)
-  2-580-638-01 SCREW, +BVTP2 4X8
-  7-682-903-19 SCREW +PWH 3X6



**Attention:** This photo is based on Sony criteria for appearing standing the main unit after removing back cover and assembling the stand. But considering mechanical design of [this](#) models and normal service process, it is not recommended to keep main unit standing by this status for repairing/testing at repair center. Please pay attention for avoiding possible scratch/deformation occurred.

**Note:** Remove rear cover, then assemble the stand to main unit. This will cause the stand with main unit fit closely, scratch or deformation may occurred easily on the stand or bezel deco. And Stand will be interference with Speaker.

# SEC 1. DISASSEMBLY AND PARTS LIST

---

- Items with no part number and no description are not stocked because they are seldom required for routine service.
- The construction parts of an assembled part are indicated with a collation number in the remark column.
- Items marked " \* " are not stocked since they are seldom required for routine service. Some delay should be anticipated when ordering these items.

The components identified by shading and mark  $\Delta$  are critical for safety. Replace only with part number specified.

The components identified by mark  $\square$  contain confidential information. Strictly follow the instructions whenever the components are repaired and/or replaced.

# 1-1. KDL-32R330B

## 1-1-1. BASE STAND



REF. No.	PART No.	DESCRIPTION	MARK
1	4-538-444-01	STAND(32)	

+	2-580-603-01	SCREW, +PSW M4X16	
---	--------------	-------------------	--



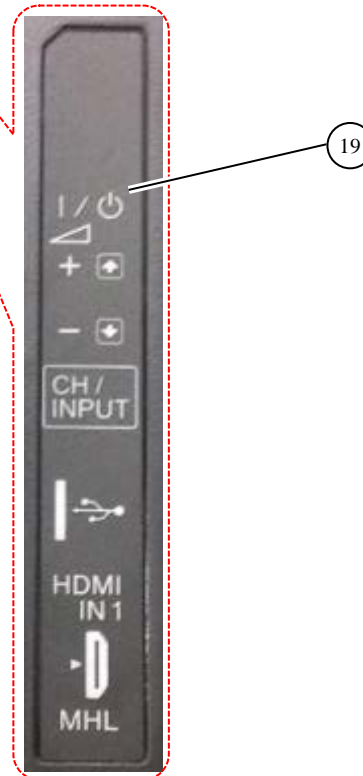
# 1-1. KDL-32R330B

## 1-1-2. REAR COVER



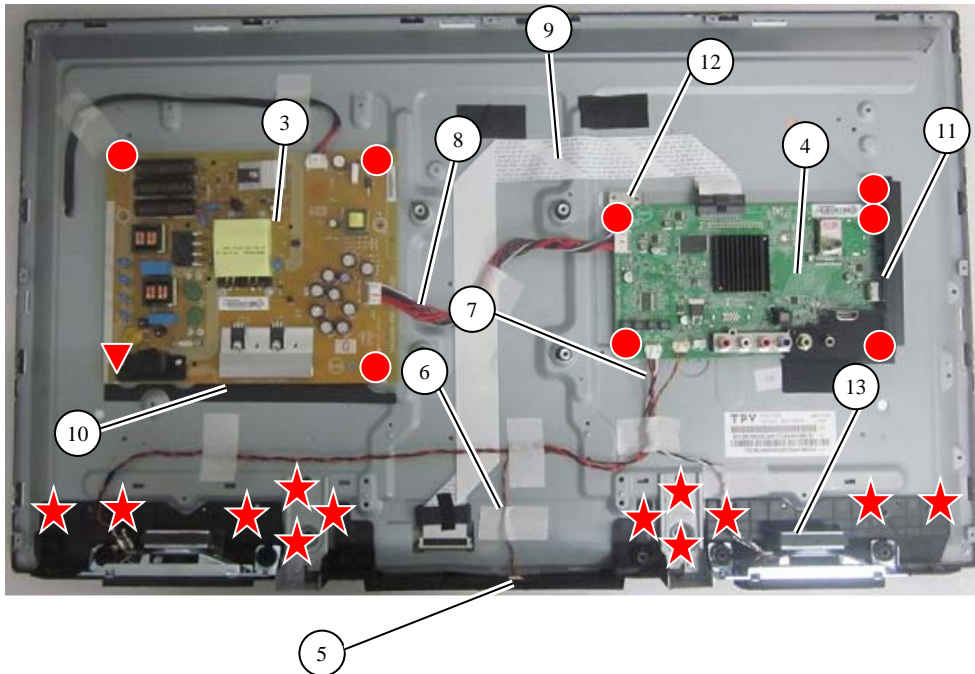
REF. No.	PART No.	DESCRIPTION	MARK
2	4-538-442-01	COVER REAR (32)	
19	4-542-297-11	IO side label	

- ▽ 2-345-219-11 +B IB 3X-- CM3 (SCREW M3X6)
- ★ 2-580-638-01 SCREW, +BVTP2 4X8
- 7-682-903-19 SCREW +PWH 3X6

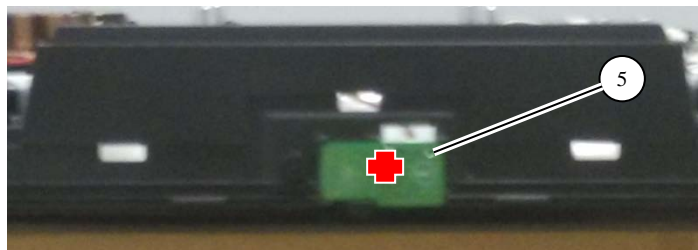


## 1-1. KDL-32R330B

### 1-1-3. POWER BOARD, A BOARD AND SPEAKER



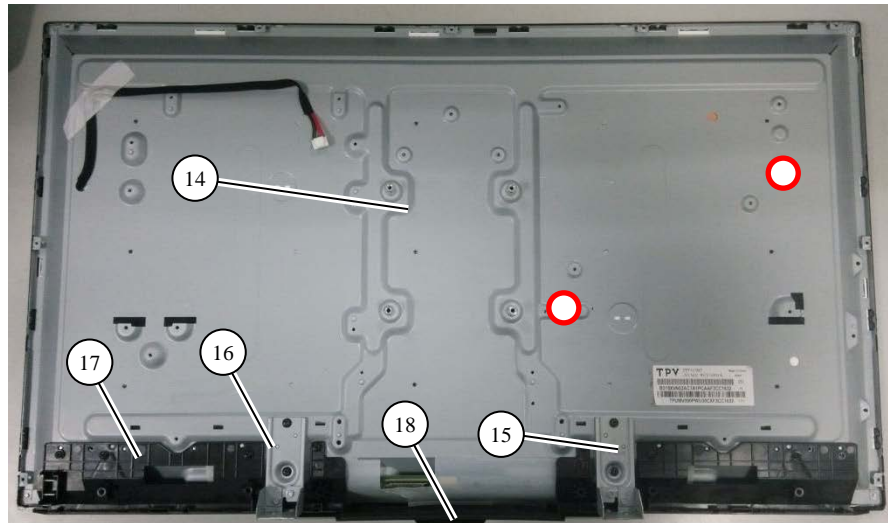
3		1-895-631-31	MOUNTED PWB POWER UNIT(SDC)
4		1-895-630-21	MOUNTED PWB A
5		1-895-629-21	MOUNTED PWB H
6		1-910-109-63	CONNECTOR ASSY 6P
7		1-910-109-64	CONNECTOR ASSY 4P
8		1-910-109-62	CONNECTOR ASSY 14P
9		1-910-109-66	LVDS CABLE
10		4-542-284-01	SHEET, INSULATION (32)
11		4-538-884-01	BRACKET, SIDE
12		4-542-280-01	BKT_CONNECTOR SGCC
13		1-859-049-11	LOUDSPEAKER (5W)



	4-466-882-01	SCREW, M3X6 SW (FANT)
	2-580-628-01	SCREW, +BVTP S3X6 TYPE2
	7-682-903-19	SCREW +PWH 3X6
	2-580-592-01	SCREW, +PSW M3X8

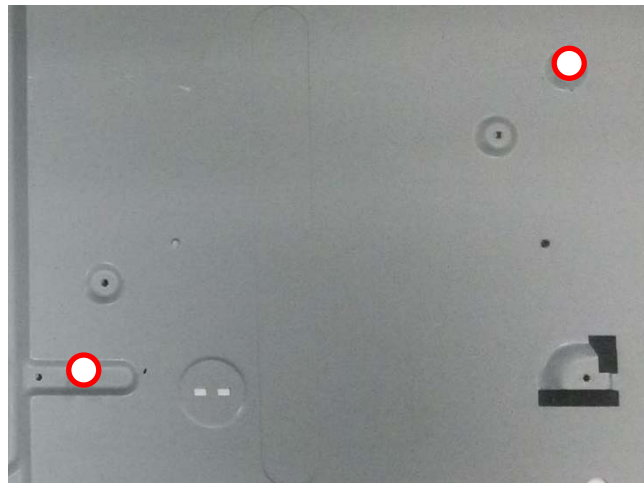
## 1-1. KDL-32R330B

### 1-1-4. LCD PANEL, DECO and COVER, BOTTOM




REF. No.	PART No.	DESCRIPTION	MARK
14	▲ A-2059-601-A	LCM ASSY (32)(AUO T320XVN02.9)	
14	▲ A-2059-603-A	LCM ASSY (32)(SDC TPT315B5-AN02 SC1G)	
15	N/A	BRACKET, STAND R 32	
16	N/A	BRACKET, STAND L 32	
17	4-538-446-11	DECO (32)	
18	4-538-445-01	COVER, BOTTOM (32)	

○	4-542-283-01	BOLT, M3
---	--------------	----------



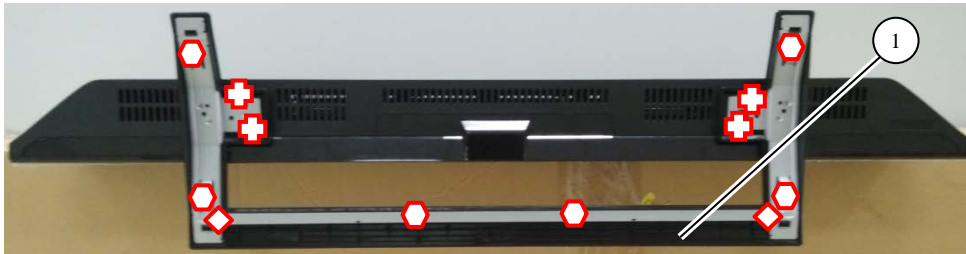
## **1-1. KDL-32R330B**

### **1-1-5. MISCELLANEOUS**




<b>PART No.</b>	<b>DESCRIPTION</b>	<b>MARK</b>
1-492-065-21	REMOTE COMMANDER (RM-YD092)	
 1-838-955-11	CORD SET, POWER-SUPPLY	

## 1-2. KDL-40R380B

### 1-2-1. BASE STAND



REF. No.	PART No.	DESCRIPTION	MARK
1	4-538-449-01	STAND (40)	

	2-580-603-01	SCREW, +PSW M4X16
	7-682-246-09	+K 3X6 SCREW +K 3X5
	7-682-245-09	+K 3X6 SCREW +K 3X4



1-2. KDL-40R380B

1-2-2. REAR COVER



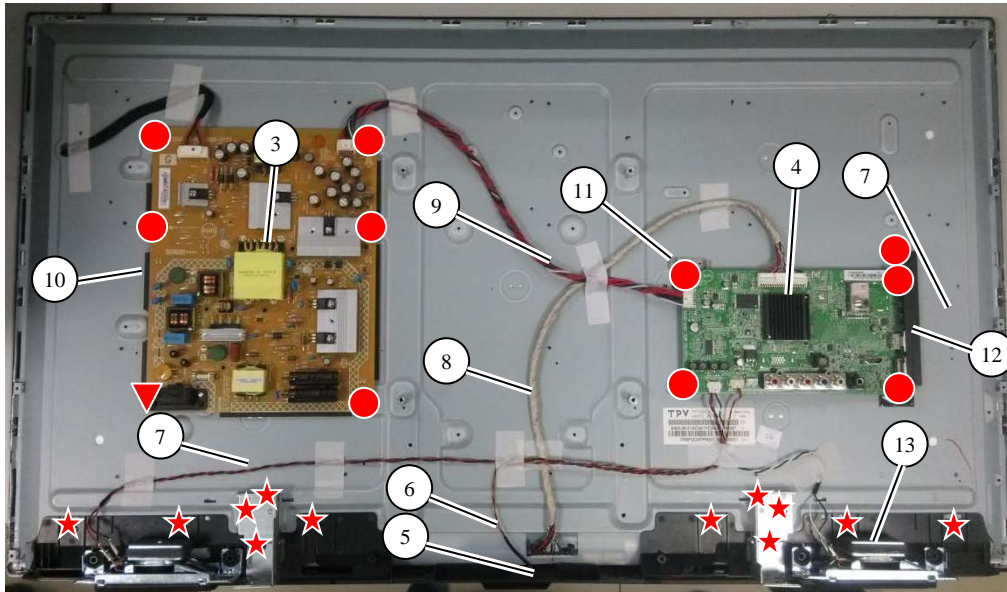
REF. No.	PART No.	DESCRIPTION	MARK
2	4-538-447-01	COVER, REAR (40)	
19	4-542-297-11	IO side label	

- ▽ 2-345-219-11 +B IB 3X-- CM3 (SCREW M3X6)
- ★ 2-580-638-01 SCREW, +BVTP2 4X8
- 7-682-903-19 SCREW +PWH 3X6

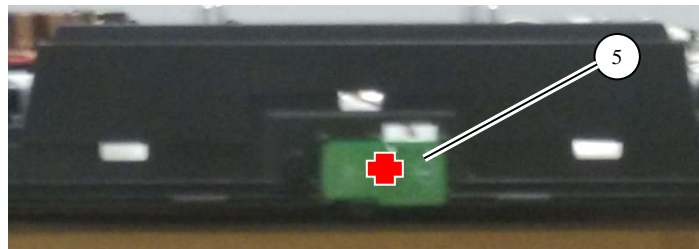


## 1-2. KDL-40R380B

### 1-2-3. POWER BOARD, A BOARD AND SPEAKER



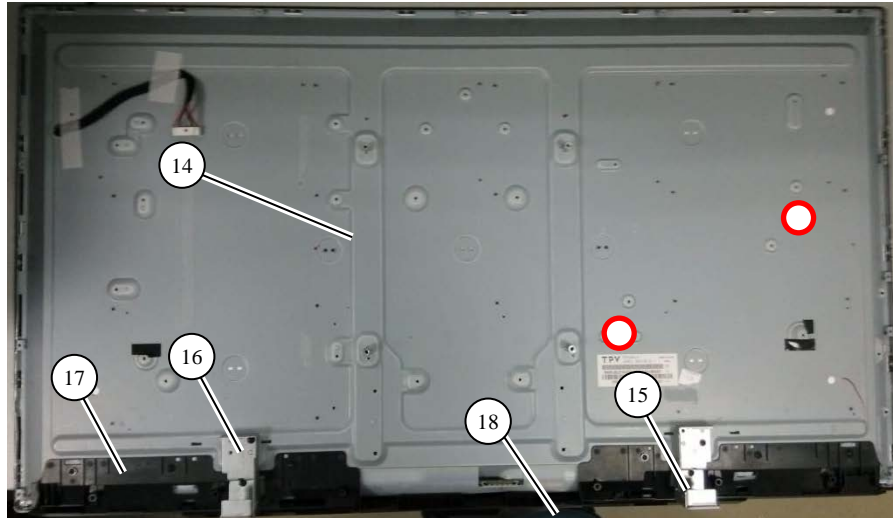
REF. No.	PART No.	DESCRIPTION	MARK
3	⚠ 1-895-632-21	MOUNTED PWB POWER UNIT	
4	🔒 1-895-630-41	MOUNTED PWB A	
5	1-895-629-21	MOUNTED PWB H	
6	1-910-109-69	CONNECTOR ASSY 6P	
7	1-910-109-70	CONNECTOR ASSY 4P	
8	1-910-109-65	LVDS CABLE	
9	1-910-109-68	CONNECTOR ASSY 14P	
10	4-542-282-01	SHEET, INSULATION (40)	
11	4-542-280-01	BRACKET, MB	
12	4-538-884-01	BRACKET, SIDE	
13	1-859-048-11	LOUDSPEAKER (8W)	



●	4-466-882-01	SCREW, M3X6 SW (FANT)
+	2-580-628-01	SCREW, +BVTP S3X6 TYPE2
★	7-682-903-19	SCREW +PWH 3X6
▼	2-580-592-01	SCREW, +PSW M3X8

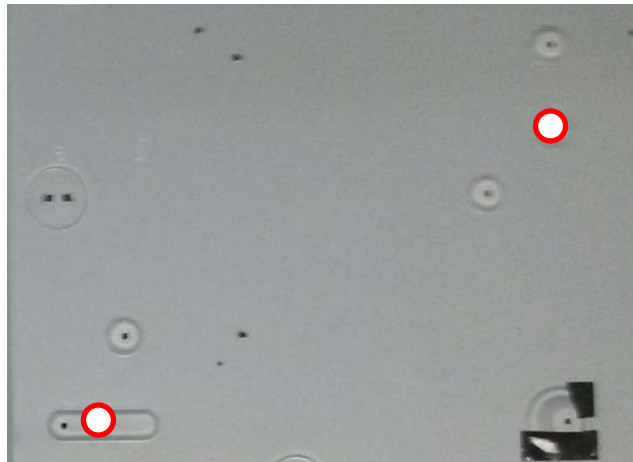
## 1-2. KDL-40R380B

### 1-2-4. LCD PANEL, DECO and COVER, BOTTOM



REF. No.	PART No.	DESCRIPTION	MARK
14	⚠ A-2059-605-A	LCM ASSY (40)(INX V400HJ6) With Bezel	
15	N/A	BRACKET, Stand R (40)	
16	N/A	BRACKET, Stand L (40)	
17	4-538-451-01	DECO (40)	
18	4-538-450-01	COVER, BOTTOM (40)	

○	4-542-283-01	BOLT, M3
---	--------------	----------



## **1-2. KDL-40R380B**

### **1-2-5. MISCELLANEOUS**

<b>PART No.</b>	<b>DESCRIPTION</b>	<b>MARK</b>
1-492-065-21	REMOTE COMMANDER ( RM-YD092 )	
△ 1-838-955-11	CORD SET, POWER-SUPPLY	

## 1-3. How to disassemble rear cover [KDL-32R330B/40R380B]

### PROCEDURE TO REMOVAL OF REAR COVER

1. Remove all screws on Rear Cover and AC Cover.
2. Open Rear Cover in order as below.

**KDL-32R330B**



Hold the panel from the middle of bezel, and lift rear cover in the direction of the arrow.

**KDL-40R380B**



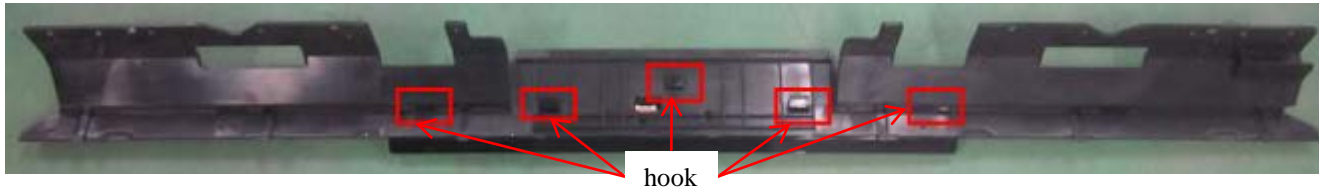
Hold the panel from the middle of bezel, and lift rear cover in the direction of the arrow.

## 1-4. How to disassemble Deco[KDL-32R330B/40R380B]

### PROCEDURE TO REMOVAL OF DECO

#### KDL-32R330B

Release deco from hook of bezel

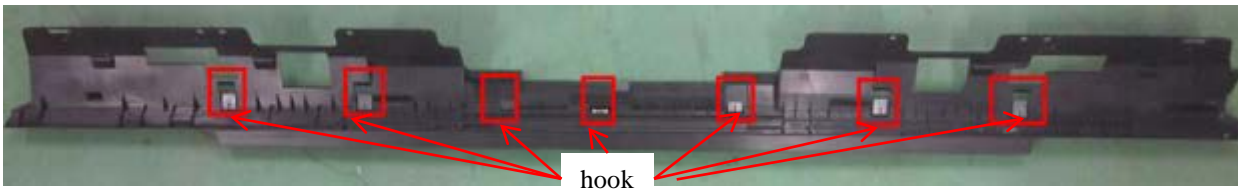


Remove deco from bezel



#### KDL-40R380B

Release deco from hook of bezel

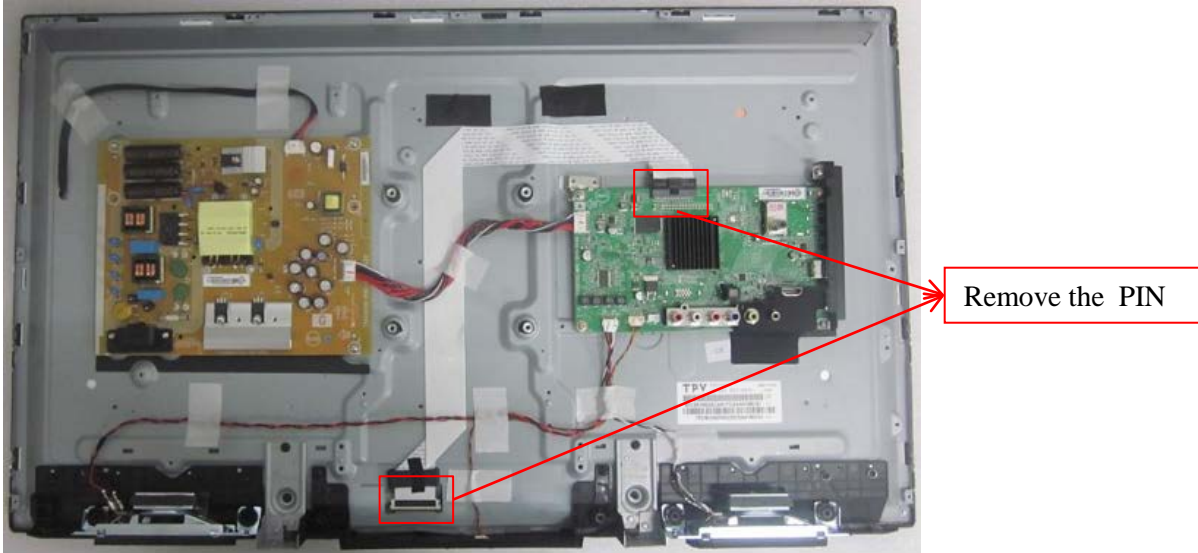


Remove deco from bezel

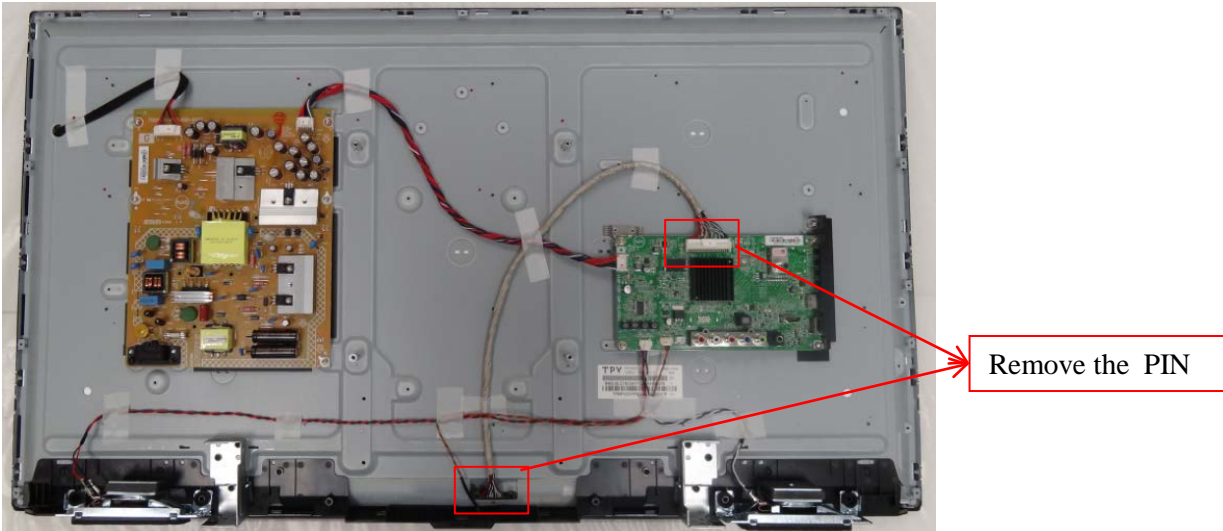


## 1-5. How to disassemble LVDS Cable[KDL-32R330B/40R380B]

### 1-5-1. PROCEDURE OF REMOVING LVDS CABLE ON KDL-32R330B



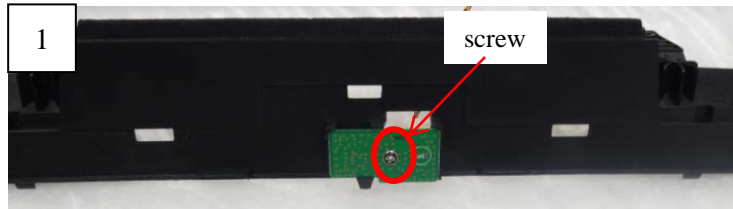
### 1-5-2. PROCEDURE OF REMOVING LVDS CABLE ON KDL-40R380B



## 1-6. How to disassemble IR Board[KDL-32R330B/40R380B]

### PROCEDURE TO REMOVAL OF IR Board

#### KDL-32R330B

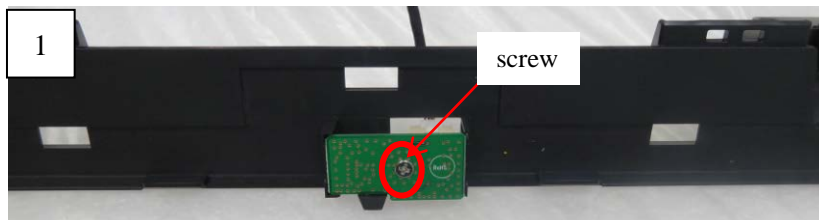


Disassemble deco  
Then disassemble the screw



Remove the IR cable

#### KDL-40R380B

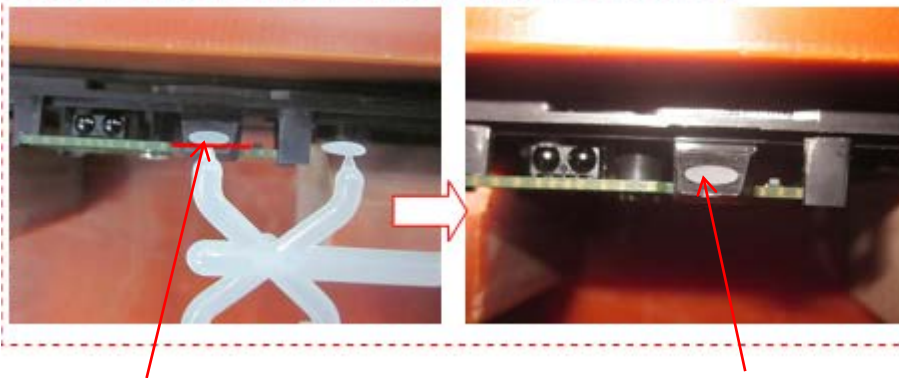
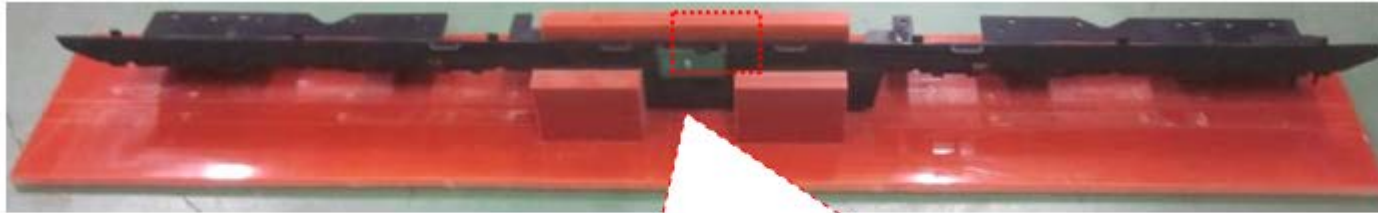


Disassemble deco  
Then disassemble the screw



Remove the IR cable

## 1-7. How to ass'y the LED lens[KDL-32R330B/40R380B]



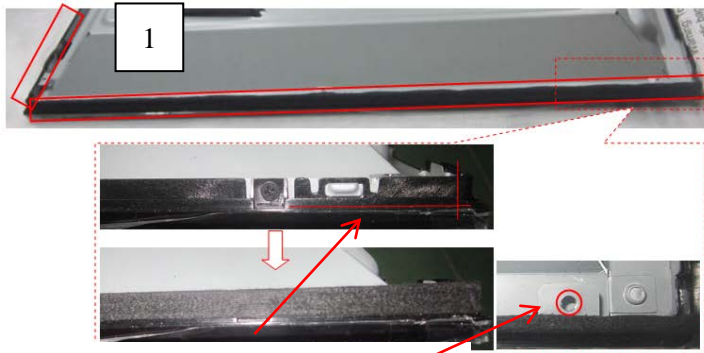
1. The LED lens is installed in the hole. As shown in the picture, break waste along the red line position.
2. Press the LED lens in the hole and ensure that the lens is flat with all round plastic.

4-542-281-01 LENS (TPN)

## 1-8. How to assemble the Himeron Countermeasure of panel[KDL-32R330B/40R380B]

### 1-8-1. KDL-32R330B

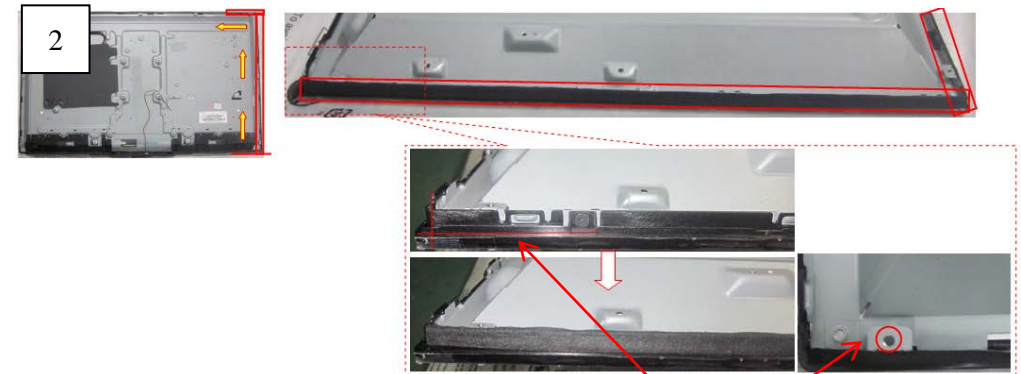
1. Stick HIMERON (PN: 4-542-292-01 )to the left side of the panel.



Stick HIMERON along the RIB root of panel, and can't cover lock hole.

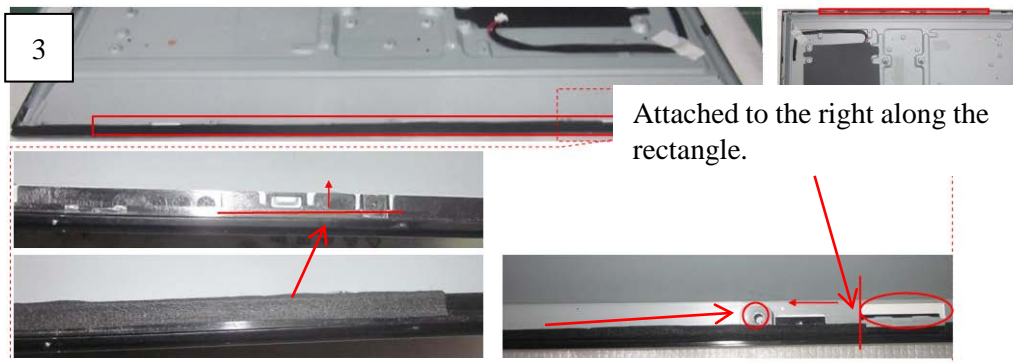


2. Stick HIMERON (PN: 4-542-292-01) to the right side of the panel.



Stick HIMERON (PN: 4-542-292-01) along the RIB root of panel, and can't cover lock hole.

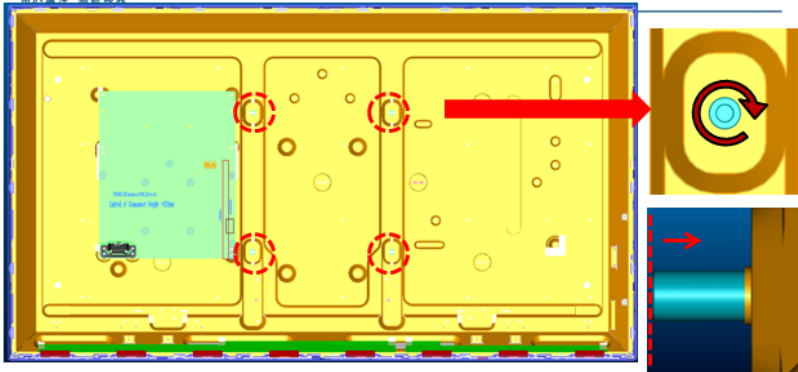
3. Stick HIMERON (PN: 4-542-291-01 )to the top side of the panel.



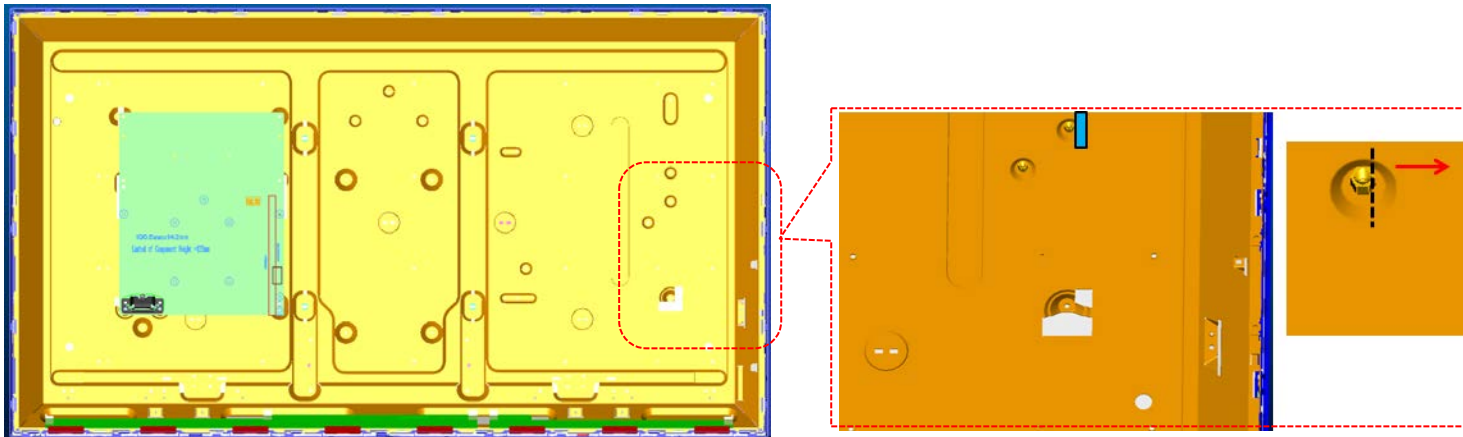
Attached to the right along the rectangle.

Stick HIMERON (PN: 4-542-291-01 ) along the RIB root of panel, and can't cover lock hole.

**4. Stick HIMERON (PN: 4-542-287-01 ) to the Vase of Panel.**



**5. Stick HIMERON (PN: 4-542-289-01 )to the Panel position as shown.**

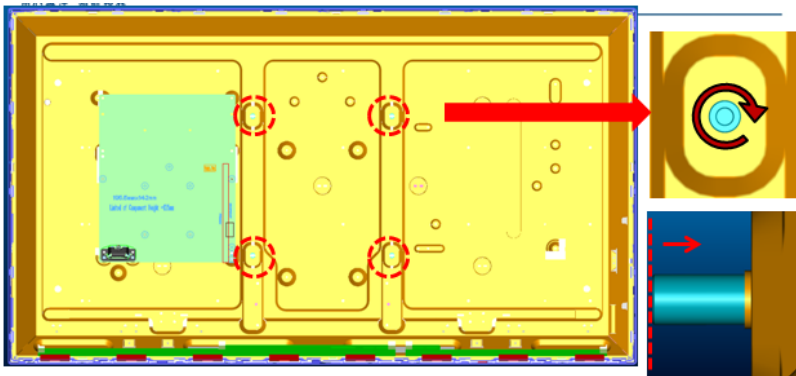


PN	Description	usage
4-542-291-01	CUSHION, 440X8	1
4-542-292-01	CUSHION, 540X10	2
4-542-287-01	CUSHION, 45X10	4
4-542-289-01	CUSHION, 20X10	1

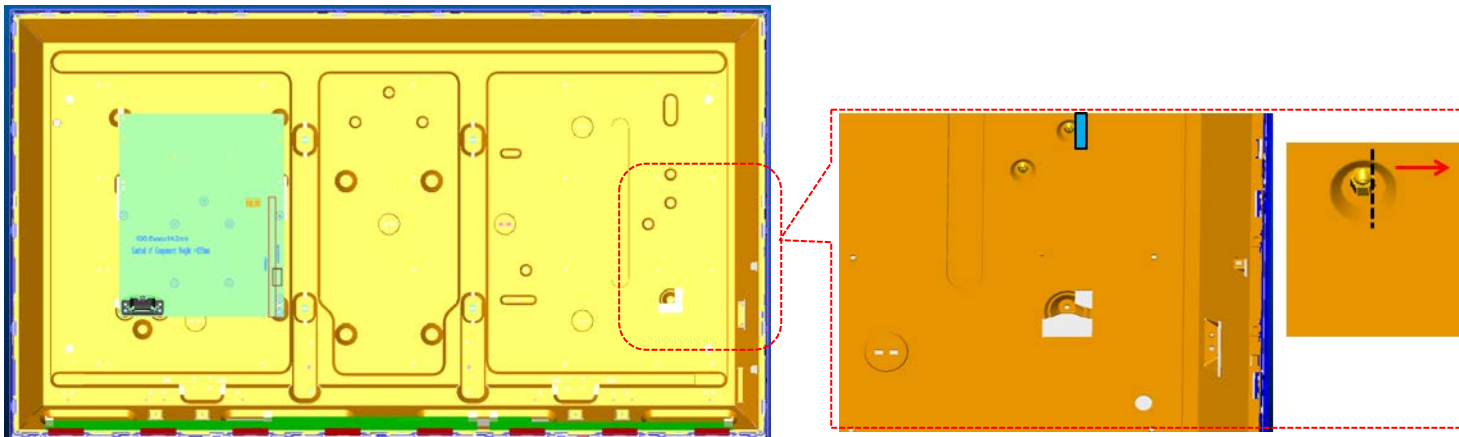
## 1-8. How to assemble the Himeron Countermeasure of panel[KDL-32R330B/40R380B]

### 1-8-2. KDL-40R380B

1. Stick HIMERON (PN: 4-542-287-01) to the Vase of Panel.



2. Stick HIMERON (PN: 4-542-289-01) to the Panel position as shown.



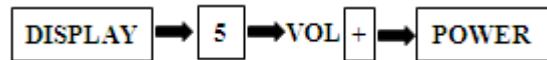
PN	Description	usage
4-542-287-01	CUSHION, 45X10	4
4-542-289-01	CUSHION, 20X10	1

# SEC 2. ADJUSTMENT

## HOW TO ENTERING SERVICE MODE

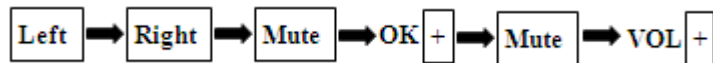
1) standby mode

- a. Turn on the main power switch to place this set in standby mode.
- b. Press the buttons on the remote commander as follows, and entering service mode.



2) power on mode

- a. Turn on the main power switch to place this set in Power on mode.
- b. Press the buttons on the remote commander as follows, and entering service mode.



### service mode display :

```
Service Mode
Wide Band Turning >>
Range Scan... >>
Self diagnosis history >>
Status Information >>
LVDS Spectrum(%) <[ 29 ]>
STATUS DIGITAL RF INFORMATION >>
Low of HPD <[ 5 ]>
Panel Selection <[ 17_LCA315XVN02 ]>
Test Reset <[ Off ]>
UART Selection <[ Factory ]>
SERIAL NUMBER EDIT 000001
MODEL NAME EDIT KDL-32R330B
MHL TMDS Termination <[ 0 ]>

[</>Set[Home]Exit
```

When replace Main Board or panel, please confirm " SERIAL NUMBER EDIT " and "MODEL NAME EDIT" in service mode.  
If they are different, please select a suitable thing.

4) How to use the remote commander.

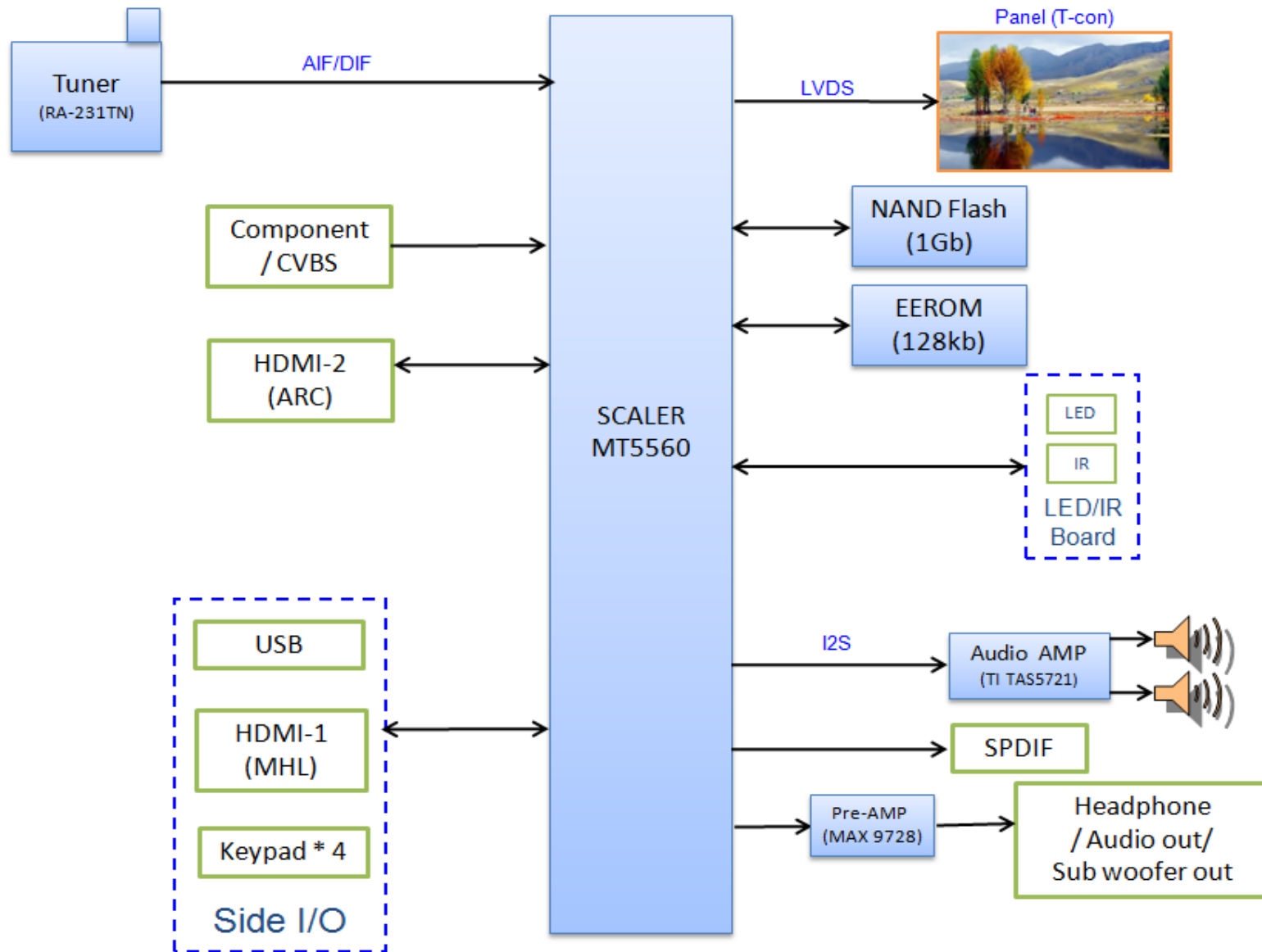
Function	The flow of control
Service mode on	1)<DISPLAY><5><VOL+><Power> 2)<Left><Right><Mute><Ok><Mute><VOL+>
Service mode off	<RETURN>/<Power off-on>
Adjustment Item up / down	↑ / ↓
Data Value up / down	← / →

5) After entering service mode, then turn off the power switch.

# SEC 3. DIAGRAMS AND CHASSIS STRUCTURE

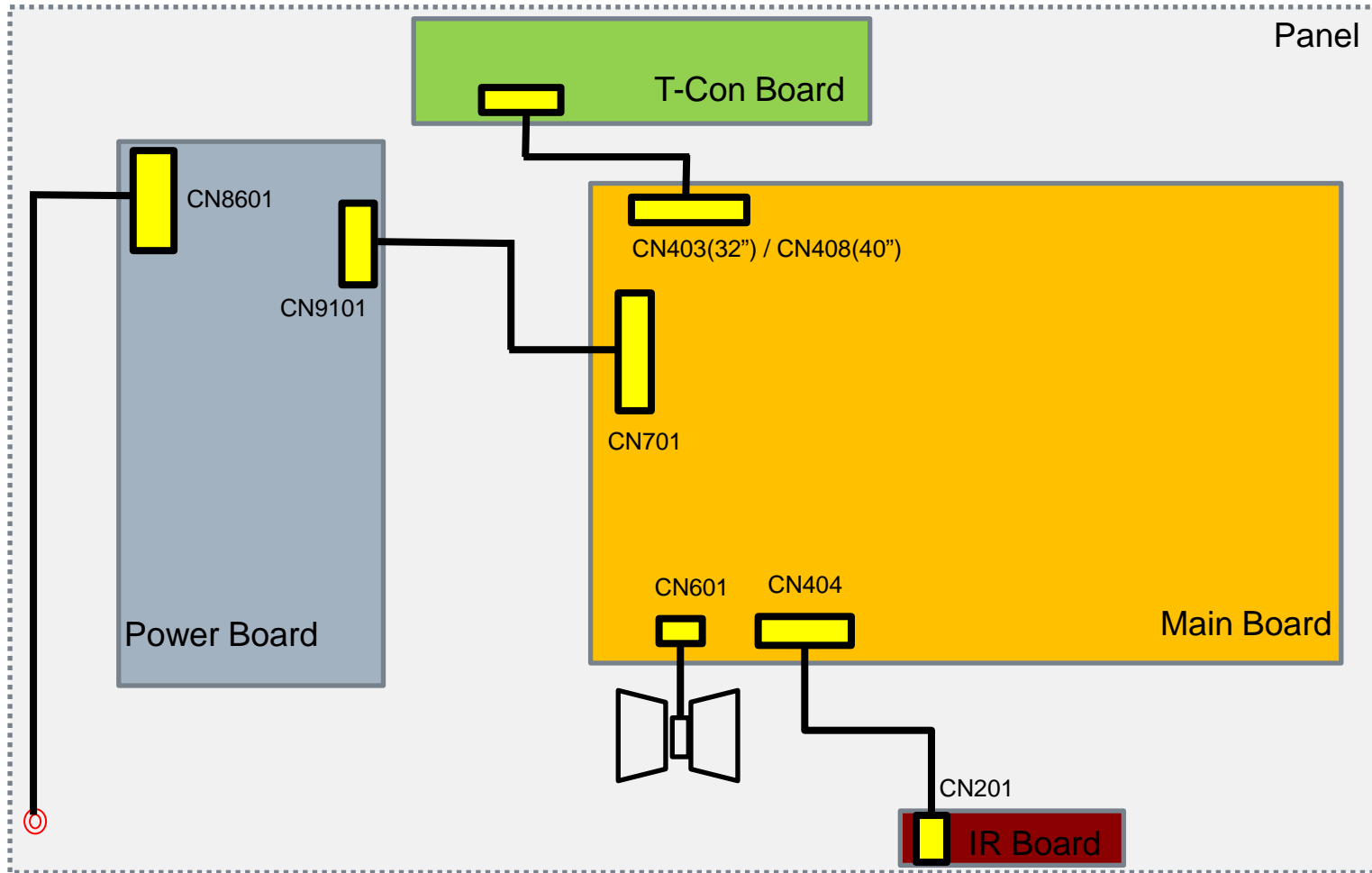
## 3-1. BLOCK DIAGRAM

### 3-1-1. KDL-32R330B/40R380B



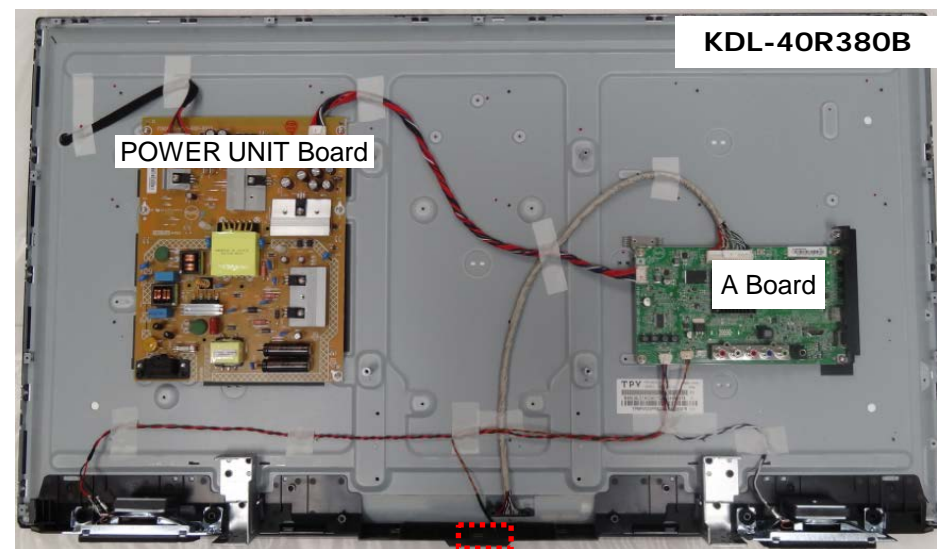
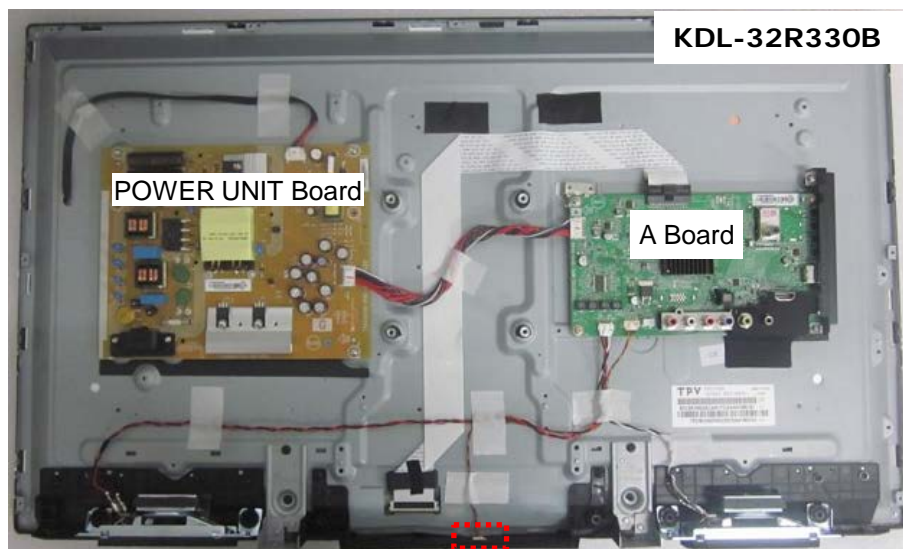
### 3-2. CONNECTOR DIAGRAM

#### 3-2-1. KDL-32R330B/40R380B



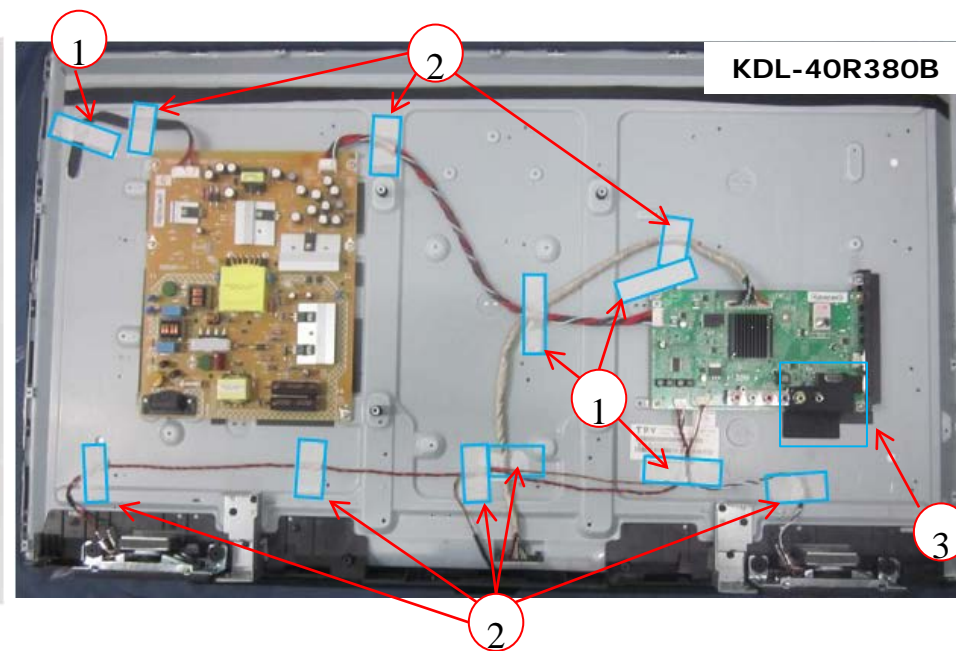
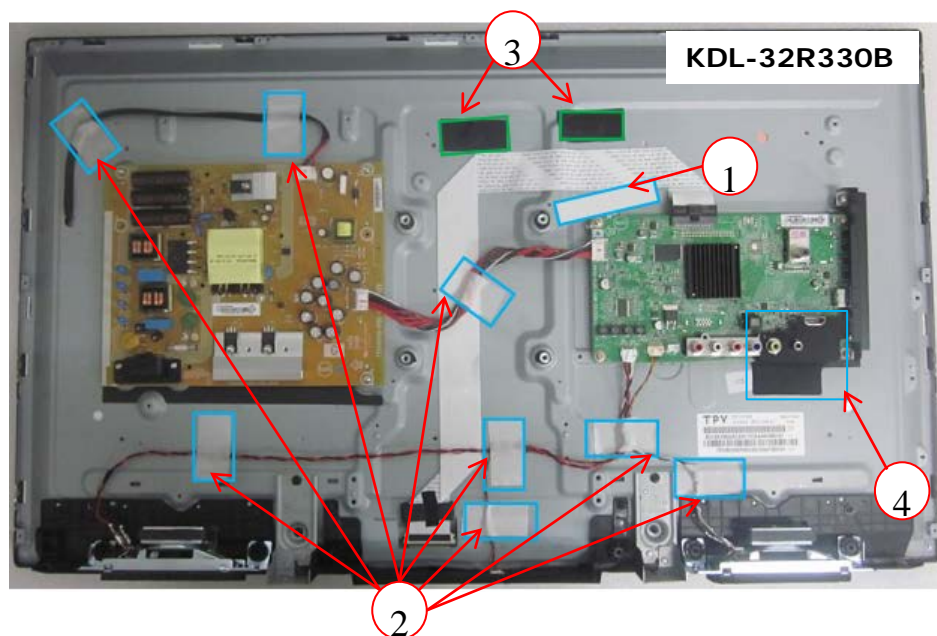
### 3-3. CIRCUIT BOARDS LOCATION

#### 3-3-1. KDL-32R330B/40R380B



### 3-4. Tape location

#### 3-4-1. KDL-32R330B/40R380B



**TAPE SIZE:**

- KDL-32R300B:** 1. 20MM\*80MM
- 2. 25MM\*50MM(White)
- 3. 25MM\*50MM(Black)
- 4. 4-542-425-01      TAPE, SHIELD (TPN)
- KDL-40R350B:** 1. 20MM\*80MM
- 2. 25MM\*50MM
- 3. 4-542-425-01      TAPE, SHIELD (TPN)

The purpose for the tape stick is to make the cables fixed.

**END**

---



# APPENDIX-2 Software data update

---

## Software data update for Engineering PKG

The confirmation of the software version of the TV set.

product information of setting menu.

[HOME] , [Settings] , [Customer Support]

Please use the latest software.

1: KDL-32R330B

2: V2.04

1. Model Name

2. Software Version

## Software Down load

store the software Package to USB memory. (Applicable USB memory : Format by FAT32, USB2.0 type )

If the software file is compressed(.zip), please unzip it.

For USB, please store **only one file** for software update.

KDL-32R330B / KDL-40R380B

sony\_fw\_2014\_XXXX\_tnus1.pkg

## Software update by USB memory

1. Turn on the TV.
2. Unplug the AC power cord.
3. Connect USB memory.



4. Plug the AC power cord then start update automatically.

- 1) Lights up Green LED. (no picture)



- 2) Starting update  
Orange LED is flashing. (2-3min)



- 3) Finish update  
Lights up Green LED again and TV is turned on.



5. Unplug AC power cord and disconnect USB memory.
6. Plug the AC power cord then turn on the TV.

### Confirm Software version

**Please confirm whether it is the latest software.  
product information of setting menu.**  
[HOME] , [Settings] , [Set-up] , [Product Information]

---

## Software data update for OND PKG

### The confirmation of the software version of the TV set.

product information of setting menu.

[HOME] , [Settings] , [Customer Support]

Please use the latest software.

1: KDL-32R330B

2: V2.04

1. Model Name

2. Software Version

## Software Down load

store the software Package to USB memory. (Applicable USB memory : Format by FAT32, USB2.0 type )

**sony\_tvupdate\_2014\_XXXX\_tcf\_auth.zip**

**If the software file is compressed(.zip), please unzip it.**

**After unzip, a folder will appear.**

**The folder name: sony\_dtv02B00B00B0B0\_00103201**

**Please copy this folder on USB**

**For USB, please store **only one folder** for software update.**

## Software update by USB memory

1. Turn on the TV.

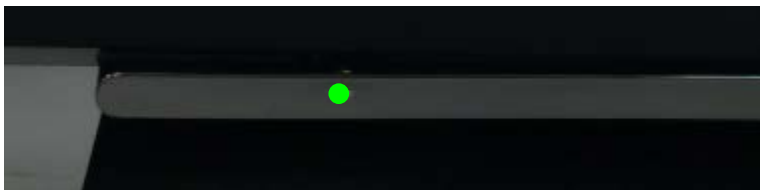
2. Connect USB memory.



3. Update from Menu

Menu → Settings → Customer Support  
→ Software update → Select "OK".

1) Lights up Green LED. (no picture)



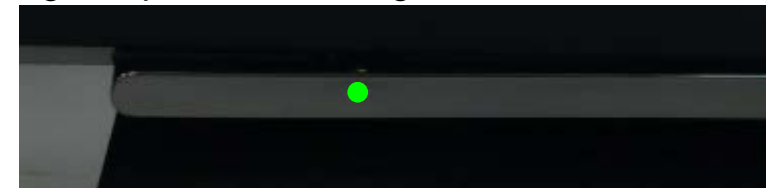
2) Starting update

Orange LED is flashing. (2-3min)



3) Finish update

Lights up Green LED again and TV is turned on.



5. Unplug AC power cord and disconnect USB memory.

6. Plug the AC power cord then turn on the TV.

### Confirm Software version

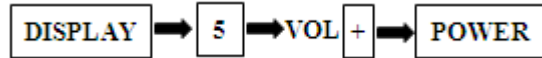
**Please confirm whether it is the latest software.  
product information of setting menu.**

[HOME] , [Settings] , [Set-up] , [Product Information]

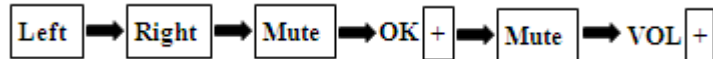
# APPENDIX-3 Operation Time, Boot Count, Panel Operation Time

## [To Bring Up Self Diagnostic(SELF CHECK)]

In standby mode, press buttons on



Or in power on, press buttons on



the remote commander sequentially in rapid succession as shown below:

## [Operation Time, Boot Count, Panel Operation Time Screen]

```
Service Mode
Wide Band Turning >>
Range Scan... >>
Self diagnosis history >>
Status Information >>
LVDS Spectrum(%) <[ 29 ]>
STATUS DIGITAL RF INFORMATION >>
Low of HPD <[ 5 ]>
Panel Selection <[ 17_LCA315XVN02 ]>
Test Reset <[ Off ]>
UART Selection <[ Factory ]>
SERIAL NUMBER EDIT 000001
MODEL NAME EDIT KDL-32R330B
MHL TMDS Termination <[ 0 ]>

[</>Set[Home]Exit
```

```
SELF CHECK
BACK <<

00002-00003-00002
[Home] Exit
```

Panel operation time by hour  
Boot count  
Total operation time by hour

You can check the TV set operation time, boot count and panel operation time in service menu although this model doesn't support self-diagnostics. After you have completed the repairs, clear the result display to "0".

### Clearing the Self Check Diagnostic List

- Panel operation time : Press the Channel 7 => Channel 0 .

### Exiting the Self-diagnostic screen

To exit the Self Diagnostic screen, turn off the power to the TV by pressing the POWER button on the remote or the POWER button on the TV.

# APPENDIX-4 Edit MODEL NAME and Serial Number

## Edit: MODEL NAME

If the user select this menu, the below editing menu is appeared and adjusting it like "Program Labels" editing way.

XXX-XXXXXXX,

"X" part can change in below way by Remote Commander. Press up/down arrow key to scroll character ("A-Z", "0-9", "\_") and press right arrow key to move the next position. These number should be affected to "Product Information" in Setting Menu

\* After user input data , press <Enter> will pop dialog to inform user to confirm data (Input data correct ?)

\* Once data confirm and save into EEPROM , gray out this item , user will not able to adjust

## Edit: Serial Number

When you select the SERIAL NUMBER EDIT item in the service mode, use right key to enter edit mode.

SERIAL NUMBER EDIT                    0000001

Use the up and down key to edit the first bit of the SERIAL NUMBER (0~9)。

Use the left and right key to switch bit.

SERIAL NUMBER EDIT                    0000001

\* After user input data , press <Enter> will pop dialog to inform user to confirm data (Input data correct ?)

\* Once data confirm and save into EEPROM , gray out this item , user will not able to adjust

Function	The flow of control
Service mode on	1) <DISPLAY><5><VOL+><POWER>
	2) <Left><Right><Mute><Ok><Mute><VOL+>
Service mode off	<RETURN> / <Power off-on>
Adjustment Item up / down	↑ / ↓
Data Value up / down	← / →

# APPENDIX-5 Select Panel Type

## Select: Panel Type

1. Entering **Service Mode**
2. Select **“Panel Selection”**
3. Use the **left and right** key to select Panel Type

```
Service Mode
Wide Band Turning          >>
Range Scan...             >>
Self diagnosis history    >>
Status Information        >>
LVDS Spectrum(%)         <[ 29 ]>
STATUS DIGITAL RF INFORMATION >>
Low of HPD                <[ 5 ]>
Panel Selection           <[ 17_LCA315XVN02 ]>
Test Reset                <[ Off ]>
UART Selection            <[ Factory ]>
SERIAL NUMBER EDIT        0000001
MODEL NAME EDIT           KDL-32R330B
MHL TMDS Termination     <[ 0 ]>

[</>Set[Home]Exit
```

KDL-32R330B	First Panel(AUO)	Second Panel(SDC)
<b>Panel Type</b>	17_LCA315XVN02	19_LCS3150AN02