

DSC-S750

SERVICE MANUAL

Ver. 1.0 2008.01

Revision History

Internal memory
ON BOARD



US Model
Canadian Model
AEP Model
UK Model
E Model
Australian Model
Korea Model
Argentine Model

Link

• SPECIFICATIONS

• DISASSEMBLY

• REPAIR PARTS LIST

• SERVICE NOTE

• BLOCK DIAGRAM

The components identified by mark \triangle or dotted line with mark \triangle are critical for safety. Replace only with part number specified.

Les composants identifiés par une marque \triangle sont critiques pour la sécurité. Ne les remplacer que par une pièce portant le numéro spécifié.

In case of the lens block assy, main board, or main frame assy failure, contact your local Sony Service Headquarter for the measures.

DIGITAL STILL CAMERA

SONY®

SPECIFICATIONS

Camera

[System]

Image device:
7.20 mm (1/2.5 type) color CCD, Primary color filter

Total pixel number of camera:
Approx. 7 410 000 pixels

Effective pixel number of camera:
Approx. 7 201 000 pixels

Lens: 3× zoom lens $f = 5.8 - 17.4$ mm (35 – 105 mm (35mm film equivalent)) F2.8 (W) – 4.8 (T)

Exposure control: Automatic exposure, Scene Selection (7 modes)

White balance: Automatic, Daylight, Cloudy, Fluorescent, Incandescent, Flash

File format (DCF compliant):
Still images: Exif Ver. 2.21 JPEG compliant, DPOF compatible
Movies: AVI (Motion JPEG)

Recording media: Internal Memory (approx. 22 MB), "Memory Stick Duo"

Flash: Flash range (ISO sensitivity (Recommended Exposure Index) set to Auto): approx. 0.5 to 3.5 m (1 feet 7 3/4 inches to 11 feet 5 7/8 inches) (W)/approx. 0.5 to 2.0 m (1 feet 7 3/4 inches to 6 feet 6 3/4 inches) (T)

[Input and Output connectors]

• (USB)•A/V OUT terminal:
Video, Audio (Monaural), USB communication

USB communication:
Hi-Speed USB (USB 2.0 compliant)

[LCD screen]

LCD panel: 6.2 cm (2.5 type) TFT drive
Total number of dots: 153 600 (640×240) dots

[Power, general]

Power: Rechargeable battery pack NP-BK1, 3.6 V
AC-LS5K AC Adaptor (not supplied), 4.2 V

Power consumption (during shooting):
1.2 W

Operating temperature: 0 to 40°C (32 to 104°F)
Storage temperature: –20 to +60°C (–4 to +140°F)

Dimensions: 90.8×56.0×26.5 mm (3 5/8×2 1/4×1 1/16 inches) (W/H/D, excluding protrusions)
Mass: Approx. 150 g (5.3 oz) (including NP-BK1 battery pack and strap, etc.)

Microphone: Monaural
Speaker: Monaural
Exif Print: Compatible
PRINT Image Matching III: Compatible
PictBridge: Compatible

BC-CSK battery charger

Power requirements: AC 100 V to 240 V, 50/60 Hz, 2.2 W

Output voltage: DC 4.2 V, 0.33 A

Operating temperature: 0 to 40°C (32 to 104°F)
Storage temperature: –20 to +60°C (–4 to +140°F)

Dimensions: Approx. 62×24×91 mm (2 1/2×3 1/32×3 5/8 inches) (W/H/D)
Mass: Approx. 75 g (2.7 oz)

Rechargeable battery pack NP-BK1

Used battery: Lithium-ion battery
Maximum output voltage: DC 4.2 V
Mean output voltage: DC 3.6 V
Maximum charge voltage: DC 4.2 V
Maximum charge current: 1.4 A
Capacity: Approx. 3.4 Wh (970 mAh)

Design and specifications are subject to change without notice.

CAUTION

Danger of explosion if battery is incorrectly replaced.
Replace only with the same or equivalent type.

SAFETY-RELATED COMPONENT WARNING!!

COMPONENTS IDENTIFIED BY MARK \triangle OR DOTTED LINE WITH MARK \triangle ON THE SCHEMATIC DIAGRAMS AND IN THE PARTS LIST ARE CRITICAL TO SAFE OPERATION. REPLACE THESE COMPONENTS WITH SONY PARTS WHOSE PART NUMBERS APPEAR AS SHOWN IN THIS MANUAL OR IN SUPPLEMENTS PUBLISHED BY SONY.

**ATTENTION AU COMPOSANT AYANT RAPPORT
À LA SÉCURITÉ!**

LES COMPOSANTS IDENTIFÉS PAR UNE MARQUE \triangle SUR LES DIAGRAMMES SCHÉMATIQUES ET LA LISTE DES PIÈCES SONT CRITIQUES POUR LA SÉCURITÉ DE FONCTIONNEMENT. NE REMPLACER CES COMPOSANTS QUE PAR DES PIÈSES SONY DONT LES NUMÉROS SONT DONNÉS DANS CE MANUEL OU DANS LES SUPPLÉMENTS PUBLIÉS PAR SONY.

SAFETY CHECK-OUT

After correcting the original service problem, perform the following safety checks before releasing the set to the customer.

1. Check the area of your repair for unsoldered or poorly-soldered connections. Check the entire board surface for solder splashes and bridges.
2. Check the interboard wiring to ensure that no wires are "pinched" or contact high-wattage resistors.
3. Look for unauthorized replacement parts, particularly transistors, that were installed during a previous repair. Point them out to the customer and recommend their replacement.
4. Look for parts which, through functioning, show obvious signs of deterioration. Point them out to the customer and recommend their replacement.
5. Check the B+ voltage to see it is at the values specified.
6. FLEXIBLE Circuit Board Repairing
 - Keep the temperature of the soldering iron around 270°C during repairing.
 - Do not touch the soldering iron on the same conductor of the circuit board (within 3 times).
 - Be careful not to apply force on the conductor when soldering or unsoldering.

Unleaded solder

Boards requiring use of unleaded solder are printed with the lead-free mark (LF) indicating the solder contains no lead.
(Caution: Some printed circuit boards may not come printed with the lead free mark due to their particular size.)



LF : LEAD FREE MARK

Unleaded solder has the following characteristics.

- Unleaded solder melts at a temperature about 40°C higher than ordinary solder.
Ordinary soldering irons can be used but the iron tip has to be applied to the solder joint for a slightly longer time.
Soldering irons using a temperature regulator should be set to about 350°C.
Caution: The printed pattern (copper foil) may peel away if the heated tip is applied for too long, so be careful!
- Strong viscosity
Unleaded solder is more viscous (sticky, less prone to flow) than ordinary solder so use caution not to let solder bridges occur such as on IC pins, etc.
- Usable with ordinary solder
It is best to use only unleaded solder but unleaded solder may also be added to ordinary solder.

TABLE OF CONTENTS

<i>Section</i>	<i>Title</i>	<i>Page</i>
1. SERVICE NOTE		
1-1.	Process After Fixing Flash Error	1-1
1-2.	Method for Copying or Erasing the Data in Internal Memory	1-1
2. DISASSEMBLY		
2-1.	Disassembly	2-1
3. BLOCK DIAGRAM		
3-1.	Overall Block Diagram	3-1
4. REPAIR PARTS LIST		
4-1.	Exploded Views	4-1
4-1-1.	Overall Section	4-1
4-1-2.	Main Frame Block	4-2
4-1-3.	Cabinet (Rear) Block	4-3
4-2.	Accessories	4-4

1. SERVICE NOTE

1-1. PROCESS AFTER FIXING FLASH ERROR

Method for Initializing the Flash Error

Initialize

Initializes the setting to the default setting.

Even if you execute this function, the images stored in the internal memory are retained.

- ① Select [OK] with ▲ on the control button, then press ●.
The message "Initialize all settings Ready?" appears.
- ② Select [OK] with ▲, then press ●.
The settings are reset to the default setting.

To cancel initializing

Select [Cancel] in step ① or ②, then press ●.

- Be sure not to power off the camera while initializing.

1-2. METHOD FOR COPYING OR ERASING THE DATA IN INTERNAL MEMORY

The data can be copied/erased by the operations on the Setup screen. (When erasing the data, execute formatting the internal memory.)

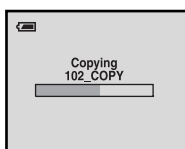
Note: When replacing the camera, erase the data in internal memory of the board before replacement.

Method for Copying the Data in Internal Memory

Copy


Copies all images in the internal memory to a "Memory Stick Duo".

- ① Insert a "Memory Stick Duo" having sufficient free capacity.
- ② Select [OK] with ▲ on the control button, then press ●.
The message "All data in internal memory will be copied Ready?" appears.
- ③ Select [OK] with ▲, then press ●.
Copying starts.



To cancel copying

Select [Cancel] in step ② or ③, then press ●.

- Use a fully charged battery pack. If you attempt to copy image files using a battery pack with little remaining charge, the battery pack may run out, causing copying to fail or possibly corrupting the data.
- You cannot select images to copy.
- The original images in the internal memory are retained even after copying. To delete the contents of the internal memory, remove the "Memory Stick Duo" after copying, then format the internal memory ([Format] in [Internal Memory Tool]).
- A new folder is created on the "Memory Stick Duo" and all the data will be copied to it. You cannot choose a specific folder and copy images to it.
- The  (Print order) marks on the images are not copied.

Method for Formatting the Internal Memory

This item does not appear when a "Memory Stick Duo" is inserted in the camera.

Format

Formats the internal memory.

- Note that formatting permanently erases all data in the internal memory, including even protected images.

- ① Select [OK] with ▲ on the control button, then press ●.
The message "All data in internal memory will be erased Ready?" appears.
- ② Select [OK] with ▲, then press ●.
The format is complete.

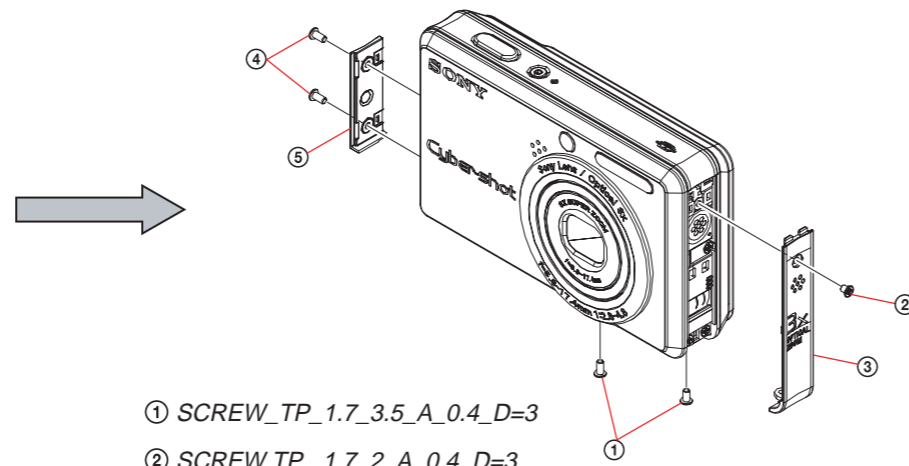
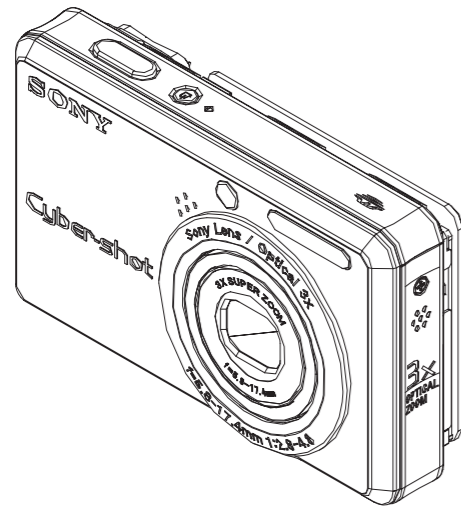
To cancel formatting

Select [Cancel] in step ① or ②, then press ●.

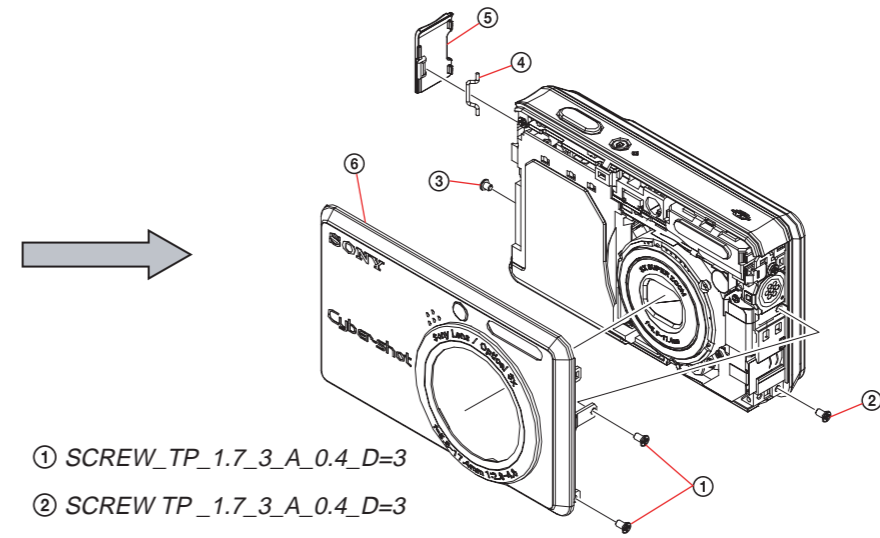
2. DISASSEMBLY

The following flow chart shows the disassembly procedure.

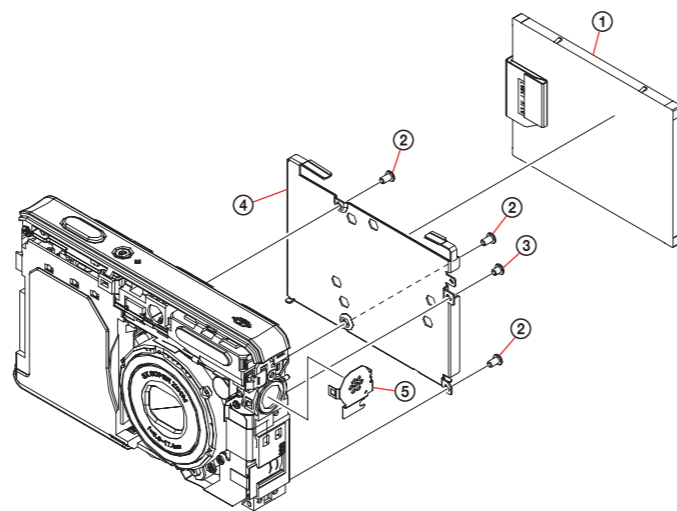
2-1. DISASSEMBLY



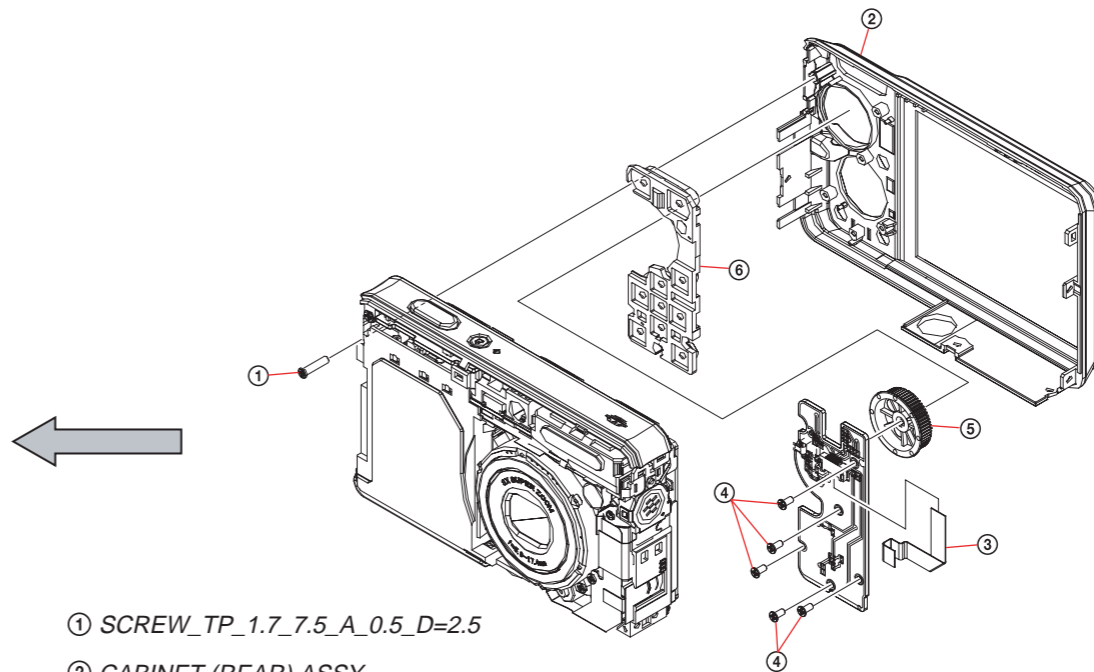
- ① SCREW_TP_1.7_3.5_A_0.4_D=3
- ② SCREW_TP_1.7_2_A_0.4_D=3
- ③ MIDDLE COVER R
- ④ SCREW_TP_1.7_3.5_A_0.4_D=3
- ⑤ MIDDLE COVER L



- ① SCREW_TP_1.7_3_A_0.4_D=3
- ② SCREW_TP_1.7_3_A_0.4_D=3
- ③ SCREW_TP_1.7_2.7_A_0.4_D=3
- ④ AXIS FOR BATTERY COVER
- ⑤ JACK COVER
- ⑥ CABINET (FRONT) ASSY

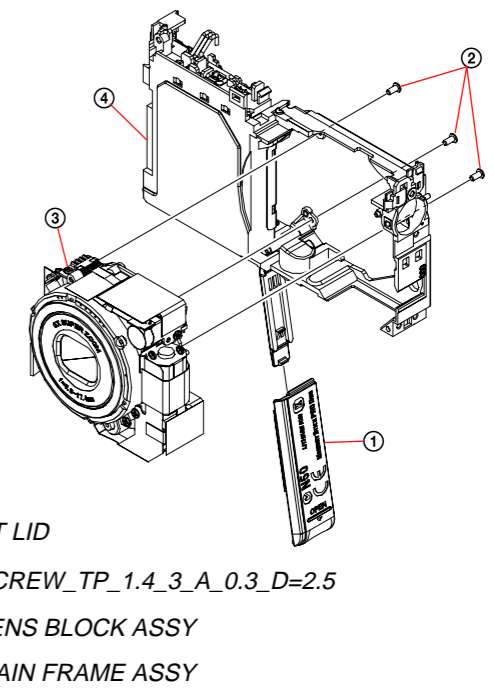
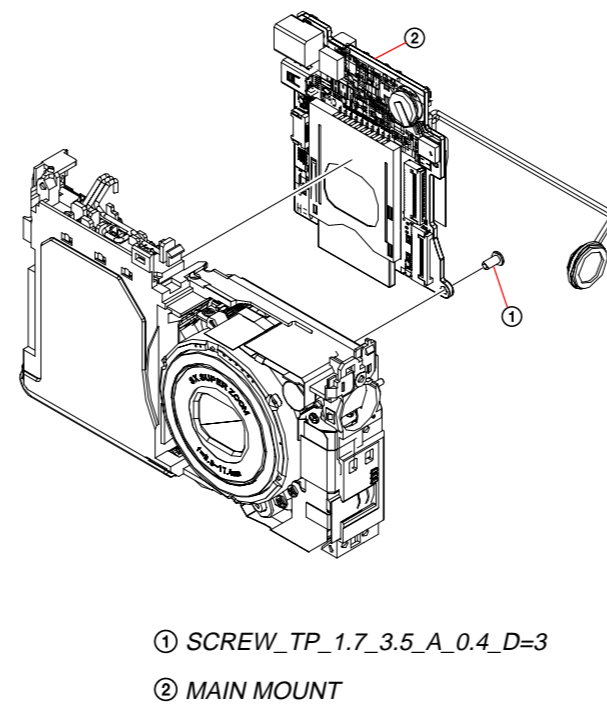
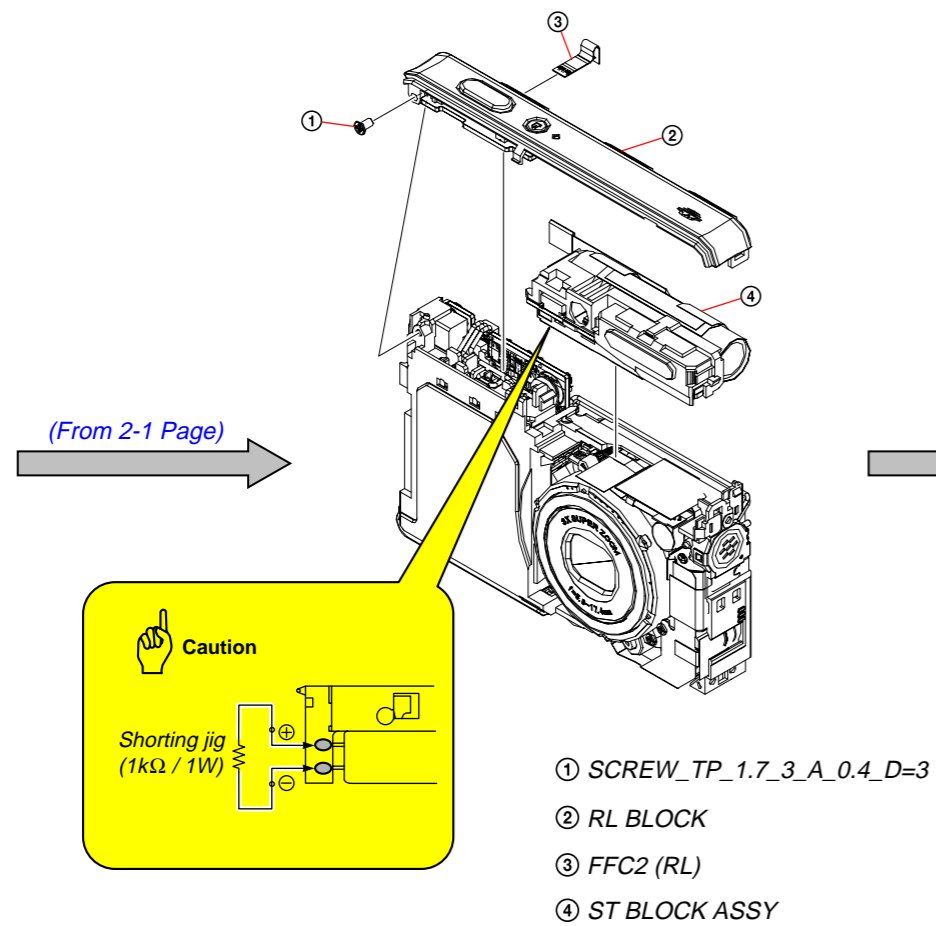


- ① LCD
- ② SCREW_TP_1.7_3_A_0.4_D=3
- ③ SCREW_TP_1.7_2_A_0.4_D=3
- ④ LCD PLATE
- ⑤ SP SHEET METAL



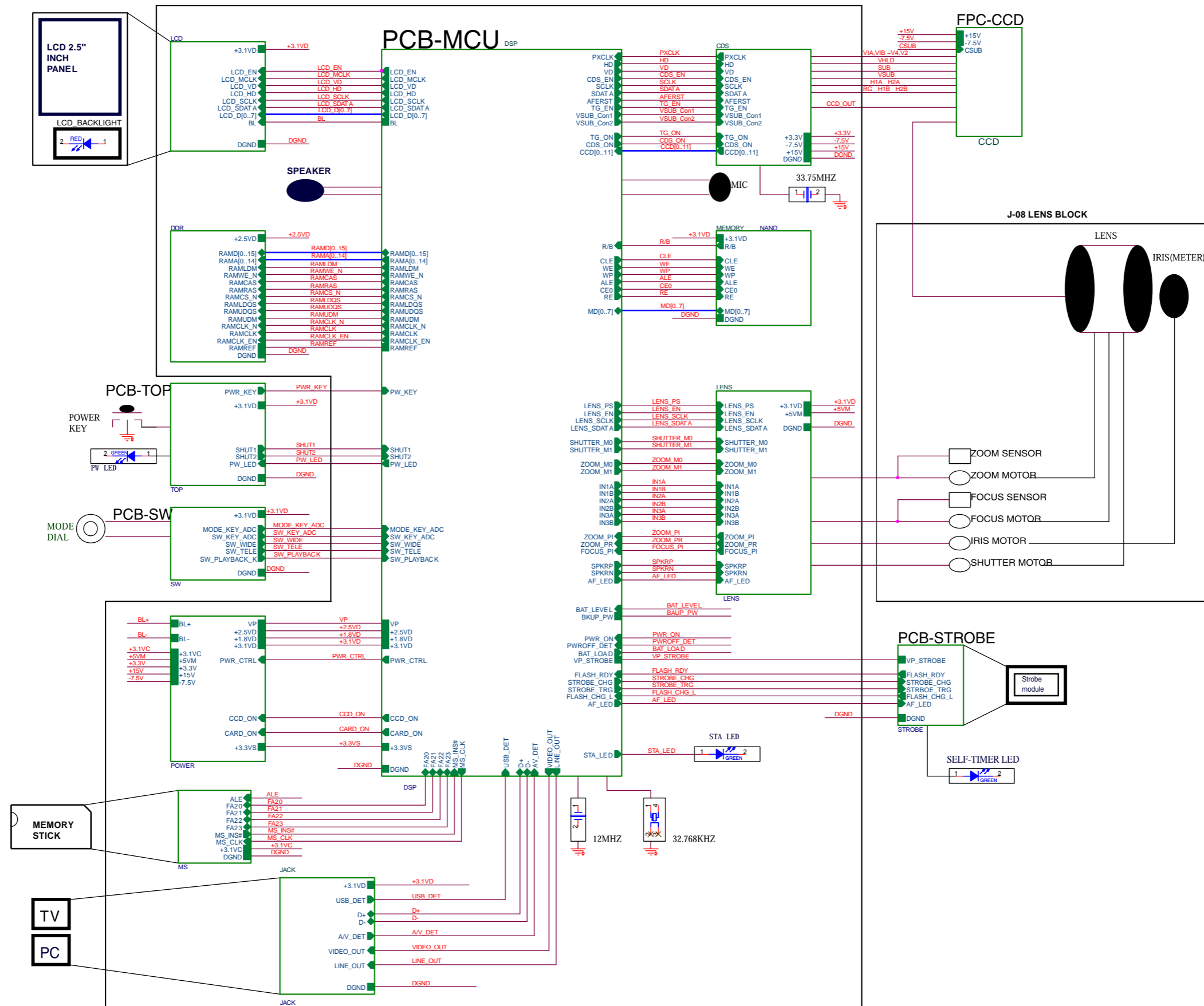
- ① SCREW_TP_1.7_7.5_A_0.5_D=2.5
- ② CABINET (REAR) ASSY
- ③ FFC1 (SW)
- ④ SCREW_TP_1.4_3_A_0.3_D=2.5
- ⑤ MODE DIAL
- ⑥ SW BLOCK ASSY

(To 2-1 Page)



3. BLOCK DIAGRAM

3-1. OVERALL BLOCK DIAGRAM

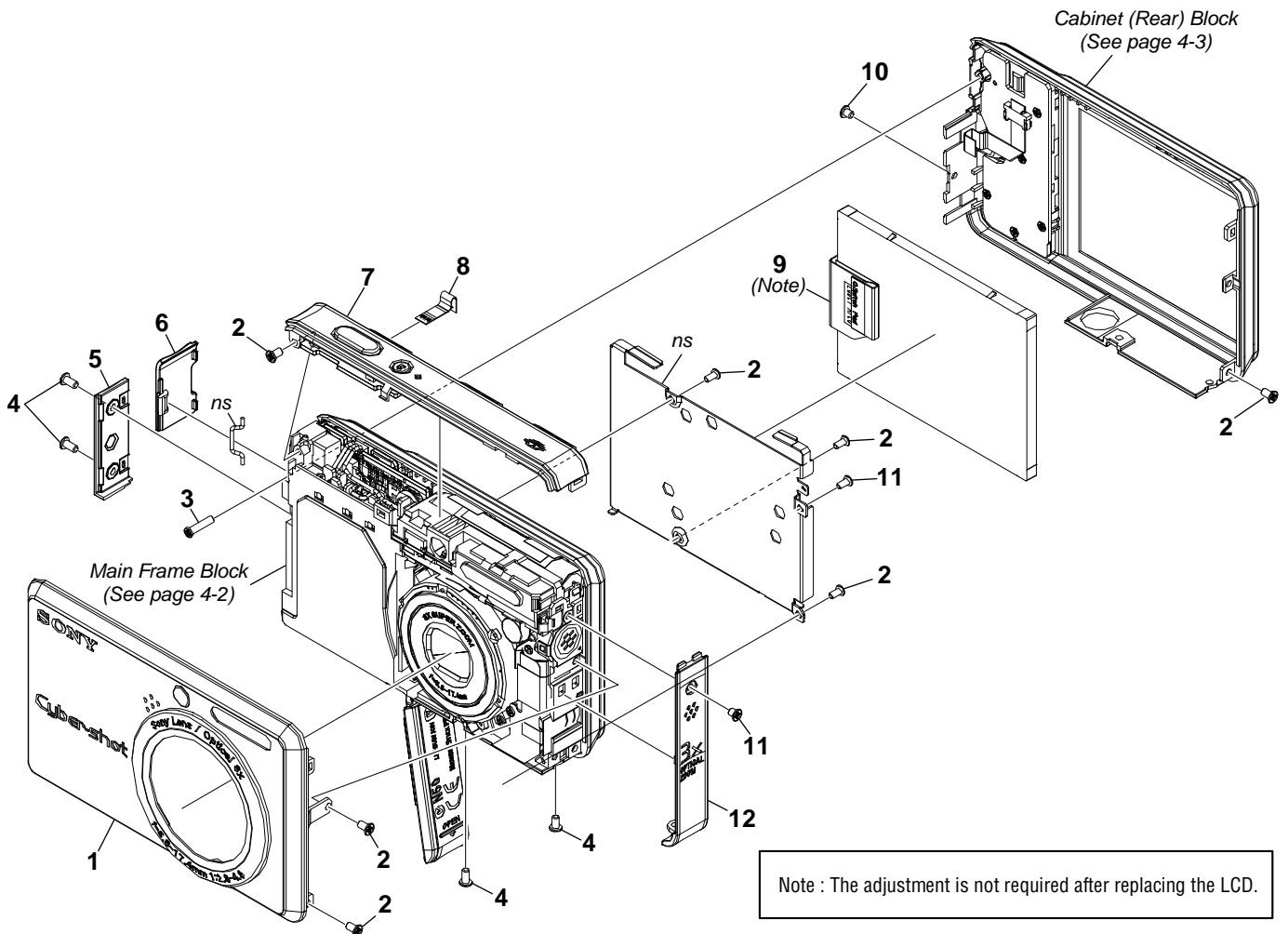


4. REPAIR PARTS LIST

4-1. EXPLODED VIEWS

4-1-1. OVERALL SECTION

ns: not supplied



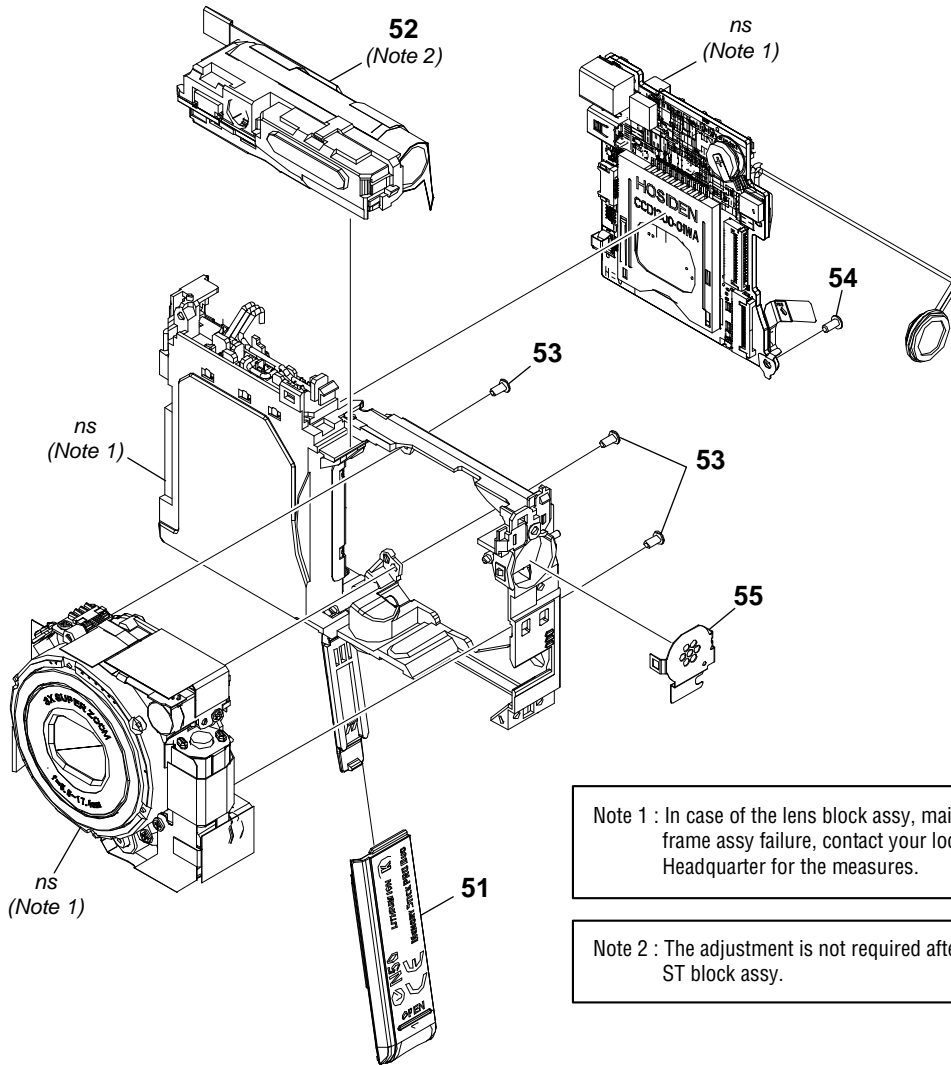
Ref. No.	Part No.	Description
1	X-2188-413-1	CABINET (FRONT) ASSY
2	3-295-133-01	SCREW_TP_1.7_3_A_0.4_D=3
3	3-295-131-01	SCREW_TP_1.7_7.5_A_0.5_D=2.5
4	3-295-134-01	SCREW_TP_1.7_3.5_A_0.4_D=3
5	3-286-713-01	MIDDLE COVER L
6	3-286-712-01	COVER, JACK

Ref. No.	Part No.	Description
7	3-286-718-01	BLOCK, RL
8	3-286-719-01	FFC2 (RL)
9	3-286-720-01	LCD (Note)
10	3-874-572-01	SCREW_TP_1.7_2.7_A_0.4_D=3
11	3-295-132-01	SCREW_TP_1.7_2_A_0.4_D=3
12	3-286-714-01	MIDDLE COVER R

4. REPAIR PARTS LIST

4-1-2. MAIN FRAME BLOCK

ns: not supplied



Note 1 : In case of the lens block assy, main board or main frame assy failure, contact your local Sony service Headquarter for the measures.

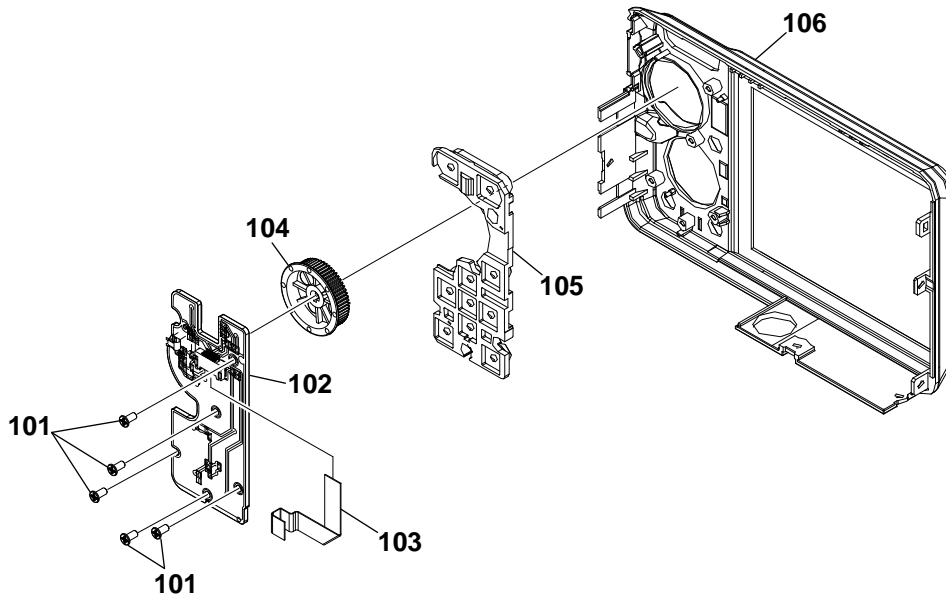
Note 2 : The adjustment is not required after replacing the ST block assy.

- Refer to cover for mark △.

Ref. No.	Part No.	Description
51	3-286-725-01	LID, BT
△ 52	A-1444-060-A	ST BLOCK ASSY (Note 2)
53	3-295-130-01	SCREW_TP_1.4_3_A_0.3_
54	3-295-134-01	SCREW_TP_1.7_3.5_A_0.4_
55	3-874-570-01	SHEET METAL, SP

4. REPAIR PARTS LIST

4-1-3. CABINET (REAR) BLOCK

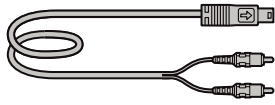


<u>Ref. No.</u>	<u>Part No.</u>	<u>Description</u>
101	3-295-130-01	SCREW_TP_1.4_3_A_0.3_D=2.5
102	A-1444-059-A	SW BLOCK ASSY
103	3-286-717-01	FFC1 (SW)
104	3-286-716-01	DIAL, MODE
105	3-286-715-01	BUTTON, SW
106	X-2188-414-1	CABINET (REAR) ASSY

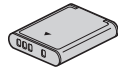
4. REPAIR PARTS LIST

4-2. ACCESSORIES

Checking supplied accessories.

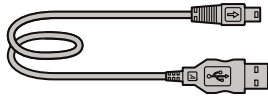


Dedicated A/V cable
3-196-980-01

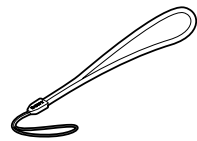


Rechargeable battery pack NP-BK1
(Note1)

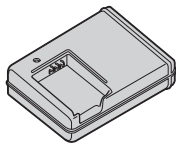
Note 1: This item is supplied with the unit as an accessory, but is not prepared as a service part.



Dedicated USB cable
3-196-981-01



Wrist strap
2-050-981-01



Battery charger BC-CSK
△ 1-480-527-11 (US, CND)
△ 1-480-527-21 (EXCEPT US, CND)



Instruction Manual
3-285-745-11 (ENGLISH) (EXCEPT US, AR, KR)
3-285-745-21 (FRENCH, ITALIAN) (CND, AEP)
3-285-745-31 (SPANISH, PORTUGUESE) (AEP, E, AR)
3-285-745-41 (GERMAN, DUTCH) (AEP)
3-285-745-51 (TRADITIONAL CHINESE, SIMPLIFIED CHINESE) (E)
3-285-745-61 (RUSSIAN, UKRAINIAN) (AEP)
3-285-745-71 (ARABIC, PERSIAN) (E)
3-285-745-81 (KOREAN) (KR)
3-285-745-91 (POLISH, CZECH) (AEP)
3-285-746-11 (HUNGARIAN, SLOVAK) (AEP)
3-285-746-21 (SWEDISH, FINNISH) (AEP)
3-285-746-31 (NORWEGIAN, DANISH) (AEP)
3-285-746-41 (THAI, MALAYSIAN) (E)
3-285-746-51 (TURKISH, GREEK) (AEP)
3-285-746-61 (ENGLISH, SPANISH) (US)



Power cord (mains lead)
(not supplied in the USA and Canada)
△ 1-555-074-91 (AUS)
△ 1-783-952-61 (AR)
△ 1-824-910-71 (AEP, E)
△ 1-832-169-31 (UK)
△ 1-833-892-21 (KR)



Conversion adaptor
△ 1-569-007-12 (E)

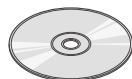


Cyber-shot Handbook(PDF)

The CD-ROM supplied contains all of language version of the Instruction Manual in pdf (Cyber-shot Handbook.pdf) for printing.

- The printed matter is not supplied. If required, please order it with the part number below.

3-285-742-11 (ENGLISH)	3-285-743-51 (POLISH)
3-285-742-21 (FRENCH)	3-285-743-61 (CZECH)
3-285-742-31 (ITALIAN)	3-285-743-71 (HUNGARIAN)
3-285-742-41 (SPANISH)	3-285-743-81 (SLOVAK)
3-285-742-51 (PORTUGUESE)	3-285-743-91 (SWEDISH)
3-285-742-61 (GERMAN)	3-285-744-11 (FINNISH)
3-285-742-71 (DUTCH)	3-285-744-21 (NORWEGIAN)
3-285-742-81 (TRADITIONAL CHINESE)	3-285-744-31 (DANISH)
3-285-742-91 (SIMPLIFIED CHINESE)	3-285-744-41 (THAI)
3-285-743-11 (RUSSIAN)	3-285-744-51 (MALAYSIAN)
3-285-743-21 (ARABIC)	3-285-744-61 (TURKISH)
3-285-743-31 (PERSIAN)	3-285-744-71 (GREEK)
3-285-743-41 (KOREAN)	3-285-744-81 (UKRAINIAN)



CD-ROM
(Cyber-shot application software/
"Cyber-shot Handbook"/
"Cyber-shot Step-up Guide")
3-285-741-01

NOTE:

- Refer to cover for mark △.
- Abbreviation
AUS : Australian model KR : Korea model
CND : Canadian model AR : Argentine model

