

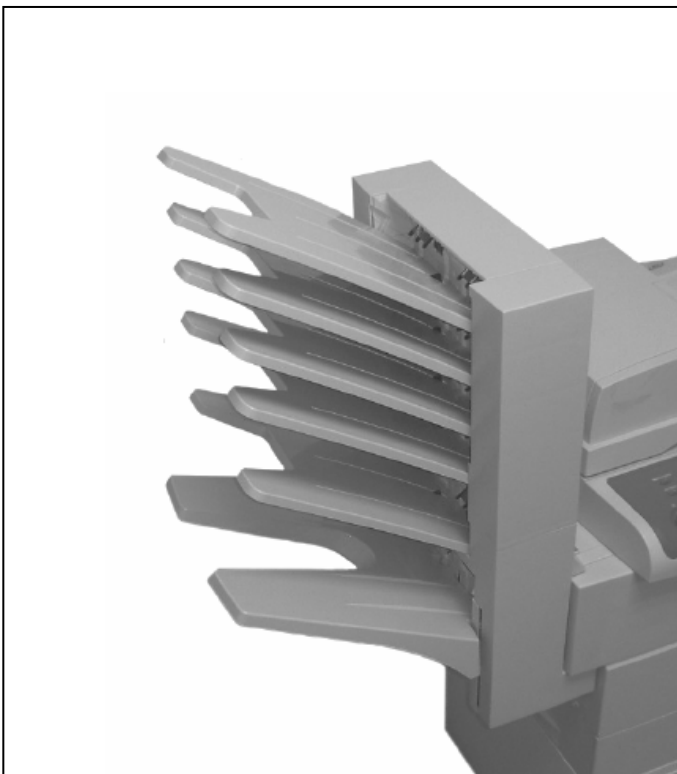


**SAMSUNG**

**2-bin finisher / Mailbox**

**SCX-FIN20S / SCX-MBT40S**

# ***Service Manual***



- Supported model
  - : SCX-6345N/6555N/6545N
  - : CLX-8380ND/8385ND/8540ND
  
- Finisher
  - : 500 sheets/Stacker, 125 sheets/Top Tray
  - : 50 sheets stapling, 1,000K Life
  
- Mailbox(4Bin)
  - : 500 sheets stacking(125sheets/bin)
  - / 1,000K Life
  
- Paper Spec.
  - : Length (148~357mm)× Width (98-216mm)
  - (60~163gsm)
  
- Staple Cartridge : 5,000 staples / cartridge

# Contents

## **1. Precautions**

## **2. Product Feature and specifications**

2.1 Product summary

2.2 Specification

2.3 Product Configuration

## **3. Disassembly and Reassembly**

## **4. Troubleshooting**

4.1 Removing paper jam in the finisher

4.2 Removing paper jam in the mailbox

4.3 Replacing a stapler cartridge

4.4 Problems and solutions

## **Finsher parts catalog**

## **Mailbox parts catalog**

## 1. Precautions

### 1.1 Electric Shock and Fire Safety Precautions

Failure to follow the following instructions could cause electric shock or potentially cause a fire.

- (1) Use only the correct voltage, failure to do so could damage the printer and potentially cause a fire or electric shock.
- (2) Use only the power cable supplied with the printer. Use of an incorrectly specified cable could cause the cable to overheat and potentially cause a fire.
- (3) Do not overload the power socket, this could lead to overheating of the cables inside the wall and could lead to a fire.
- (4) Do not allow water or other liquids to spill into the printer, this can cause electric shock. Do not allow paper clips, pins or other foreign objects to fall into the printer these could cause a short circuit leading to an electric shock or fire hazard.
- (5) Never touch the plugs on either end of the power cable with wet hands, this can cause electric shock. When servicing the printer remove the power plug from the wall socket.
- (6) Use caution when inserting or removing the power connector. The power connector must be inserted completely otherwise a poor contact could cause overheating possibly leading to a fire. When removing the power connector grip it firmly and pull.
- (7) Take care of the power cable. Do not allow it to become twisted, bent sharply round corners or other wise damaged. Do not place objects on top of the power cable. If the power cable is damaged it could overheat and cause a fire or exposed cables could cause an electric shock. Replace a damaged power cable immediately, do not reuse or repair the damaged cable. Some chemicals can attack the coating on the power cable, weakening the cover or exposing cables causing fire and shock risks.
- (8) Use caution during thunder or lightening storms. Samsung recommend that this machine be disconnected from the power source when such weather conditions are expected. Do not touch the machine or the power cord if it is still connected to the wall socket in these weather conditions.
- (9) Avoid damp or dusty areas, install the printer in a clean well ventilated location. Do not position the machine near a humidifier. Damp and dust build up inside the machine can lead to overheating and cause a fire.
- (10) Do not position the printer in direct sunlight. This will cause the temperature inside the printer to rise possibly leading to the printer failing to work properly and in extreme conditions could lead to a fire.
- (11) Do not insert any metal objects into the machine through the ventilator fan or other part of the casing, it could make contact with a high voltage conductor inside the machine and cause an electric shock.

### 1.2 Assembly / Disassembly Precautions

Replace parts carefully, always use Samsung parts. Take care to note the exact location of parts and also cable routing before dismantling any part of the machine. Ensure all parts and cables are replaced correctly. Please carry out the following procedures before dismantling the printer or replacing any parts.

- (1) Ensure that power is disconnected before servicing or replacing any electrical parts.
- (2) Disconnect printer interface cables and power cables.
- (3) Only use approved spare parts. Ensure that part number, product name, any voltage, current or temperature rating are correct.
- (4) When removing or re-fitting any parts do not use excessive force, especially when fitting screws into plastic.
- (5) Take care not to drop any small parts into the machine.

## 2. Product Feature and Specifications

### 2.1 Product summary

- (1) High Speed System : 35 ~ 60ppm with minimized skip-pitches.
  
- (2) Heavy Duty Design
  - Finisher : 500 sheets/Stacker, 125 sheets/Top Tray  
: 50 sheets stapling, 1,000K Life
  
  - Mailbox(4Bin) : 500 sheets stacking(125sheets/bin) / 1,000K Life
  
- (3) Paper Spec. : Length (148~357mm)×Width (98-216mm) (60~163gsm)
  
- (4) Staple Cartridge : 5,000 staples / cartridge
  
- (5) Configuration : Embed type

## 2.2. Specification

### 2.2.1 Size / Weight

Module	SIZE[WXD <sub>X</sub> H] (mm)	Weight (Kg)
Finisher	777X361X439	13
Mailbox	351X361X421	5

\* including module tray and bins

### 2.2.2 Power Supply

- (1) Power Supply : Engine supplies 24V / 5V / 3.3V to Finisher & Mailbox
- (2) Input Power : 24V $\pm$ 10%, 5 V  $\pm$ 5%, 3.3 V  $\pm$ 5%
- (3) Rating Current : 24.0 V, 3.7 A (Peak 4.5A for 25ms MAX.)  
5.0 V, 1.0 A  
3.3 V, 0.6 A

### 2.2.3 Stacking and Stapling

- (1) Stacking
  - Finisher : Stacker Tray: 500 sheet, Top Tray: 125 Sheets
  - Mailbox : 500 sheet with 20lb sheet(125sheets/bin)
- (2) Stapling (Finisher) : 50 sheet stapling with 20lb sheet  
: 5,000 staples per a stapler cartridge
- (3) Offset at Non Staple job : Available (Finisher Only)
- (4) Offset at Stapled job : Available (Finisher Only)

**2.2.4 Machine Life** : 1,000,000 sheets or 5 years (Excluding Periodical replacement part)

### 2.2.5 Acoustic Noise

Measure at stacking mode without stapling. (Measuring condition is ISO 7779, 9296)

- (1) Run continuous audible noise of Finisher or Mailbox (Sound pressure level)  
:  $\leq$  53 dB(A)
- (2) Run impulse audible noise of Finisher or Mailbox (Sound pressure level)  
:  $\leq$  65 dB(A)

## 2.2.6 ENVIRONMENT

### 2.2.6.1 Operating Environment

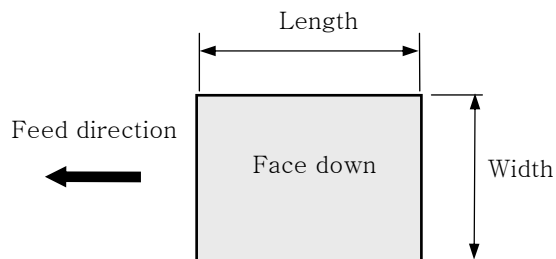
- (1) Operating temperature : 10°C to 32.5°C
- (2) Operating humidity : 15 % to 80 %RH
- (3) Initializing : -5°C

### 2.2.6.2 Storage Environment

- (1) Storage temperature : -20°C to 60°C
- (2) Storage humidity : 10% to 95%RH

## 2.2.7 Media

### (1) Paper orientation



(2) Paper Size : Length (148 ~ 357mm) × Width (98 ~ 216mm)

(3) Paper Weight : 60 ~ 163g/m<sup>2</sup> (16 ~ 43lb)

< Operating Mode Table >

	Stack	Staple	Offsetting	
Width 98~182mm	○	×	×	60~163g/m <sup>2</sup> 16~43lb
Width 182m~216mm	○	○	○	60~163g/m <sup>2</sup> 16~43lb
Multi media	○	×	×	(Note1)

Note1) Multi-Media are not guaranteed for the performance(No dropping, No miss-Ordering)

(4) Paper Type : PPC paper (Coefficient of sliding friction: Max. 0.6)

Note1) Tracing paper / Label / OHP / Envelope are not guaranteed for the performance  
(No dropping, No miss-Ordering)

Note2) Pre punched PPC paper is not guaranteed for the performance

(5) Media Size & Mechanism Constraint

Name	Paper size		Orientation	Output		Staple Corner 45°	Offset
	mm	Inches	Direction	Main tray	Top tray		
				60-220g	60-163 g		
A5	210X148	8.3X5.8	LEF	O	O	O	O
Statement	216X140	8.5X5.5	LEF	O	O	O	O
No 9 Env	98X225	3.9X8.9	SEF	O	O	X	X
Monarch Env	98.4 × 190.5	3.9 × 7.5	SEF	O	O	X	X
PostCard 4x6	101.6 × 152.4	4.0 × 6.0	SEF	O	O	X	X
A6	105X148	4.1X5.8	SEF	O	O	X	X
No 10 Env	105 × 241	4.1 × 9.5	SEF	O	O	X	X
DL Env	110 × 220	4.3 × 8.7	SEF	O	O	X	X
C6 Env	114 × 162	4.5 × 6.4	SEF	O	O	X	X
Statement	140X216	5.5X8.5	SEF	O	O	X	X
A5	148X210	5.8X8.3	SEF	O	O	X	X
C5 Env	162 × 229	6.4 × 9.0	SEF	O	O	X	X
B5(ISO)	176 × 250	6.9 × 9.8	SEF	O	O	X	X
B5(JIS)	182X257	6.9X9.8	SEF	O	O	O	O
Executive	184X267	7.3X10.5	SEF	O	O	O	O
16k	195X270	7.7X10.6	SEF	O	O	O	O
A4	210X297	8.3X11.7	SEF	O	O	O	O
Legal	216X356	8.5X14	SEF	O	O	O	O
Letter	216X279	8.5X11	SEF	O	O	O	O
Folio	216X330	8.5X13	SEF	O	O	O	O
Oficio	215.9 × 342.9	8.5 × 13.5	SEF	O	O	O	O
Cardstock	216X279	8.5X11	SEF	O	X	O	O

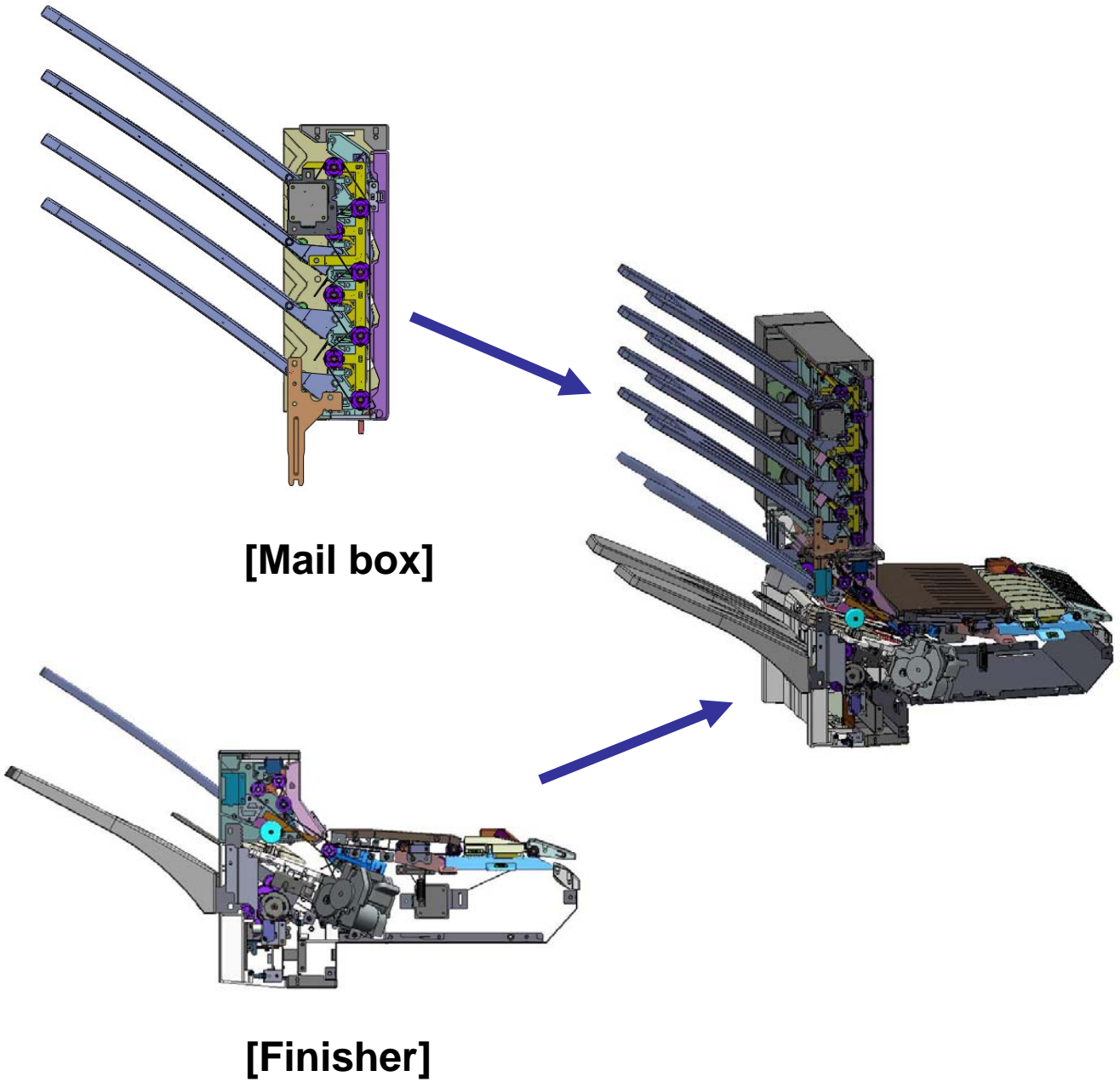
\* The media size & mechanism constraint of Mailbox is the same as top tray.

2.2.8 Maintenance

- Periodical replacement part

	Part name	Part No	Life	Note
1	AS-PADDLE COMPILE	JC81-03482A	400K sheets	

## 2.3. Product Configuration



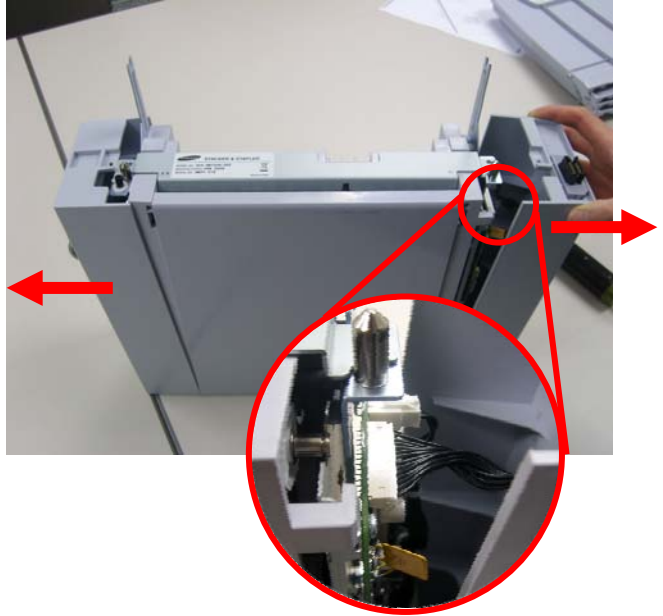
### 3. Disassembly and Reassembly

#### 3.1 Mail box disassembly

1. Lift up Mail box Unit.



4. Remove the front cover. Separate the rear cover after remove the harness.



2. Remove the Stacker. (4 ea)



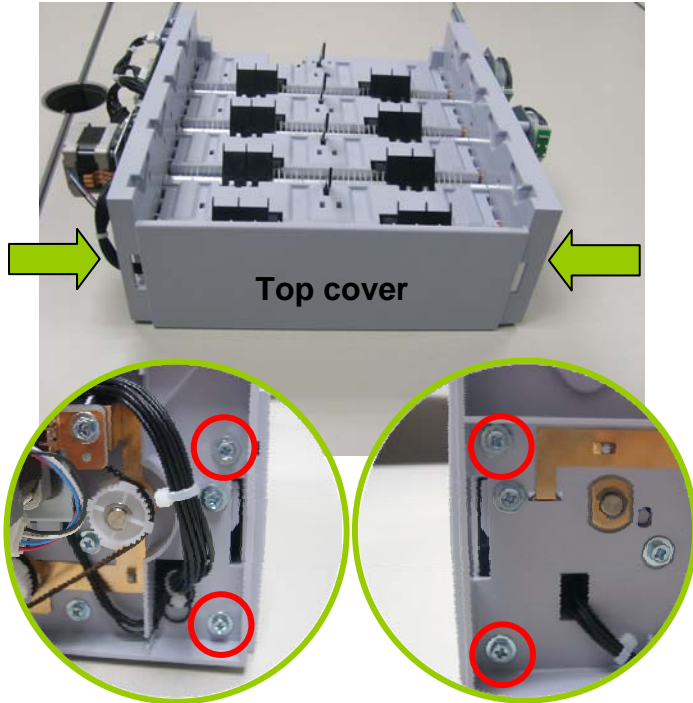
3. Remove 2 screws to separate front/rear cover.



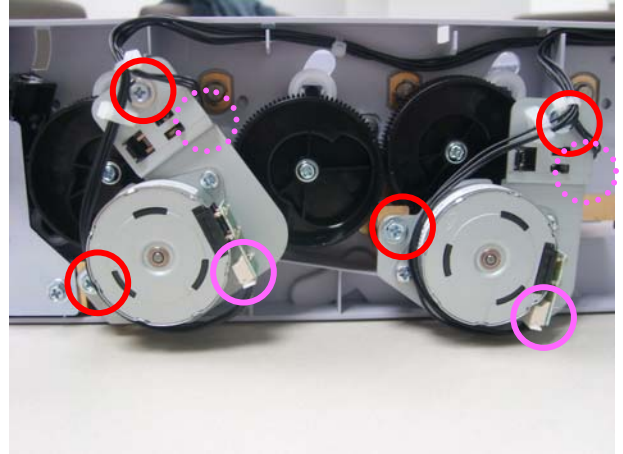
5. Remove the jam cover.



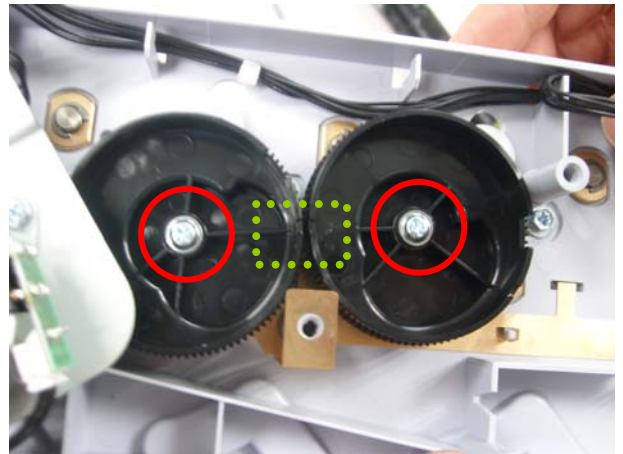
6. Remove the top cover after remove 4 screws.



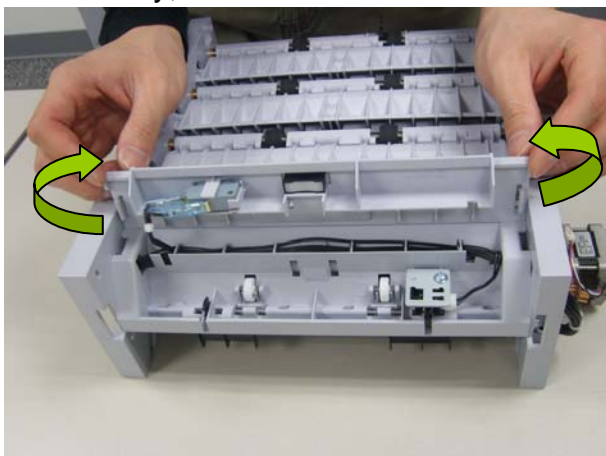
8. To remove the Motor, remove 4 screws and 4 harness.



9. Remove the 2 SPUR Gear after remove screw.

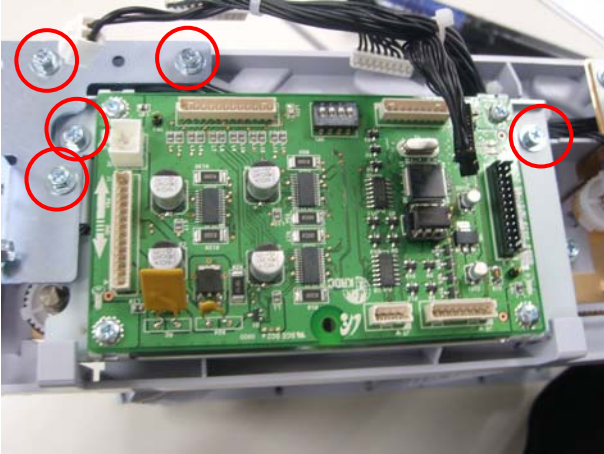


7. Open the Assy Shiled TOP. If necessary, remove switch or sensor.

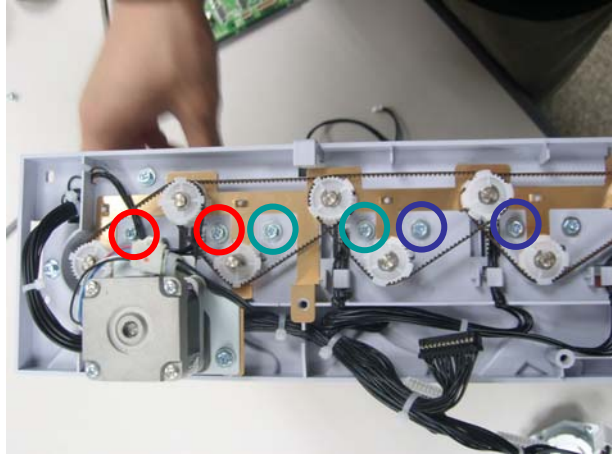


**Caution**  
When re-assembling, align the groove of both gear.

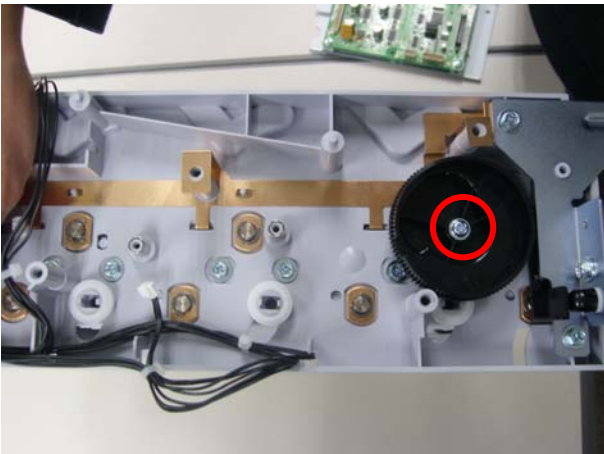
10. Separate the bracket and main board after remove 5 screws.



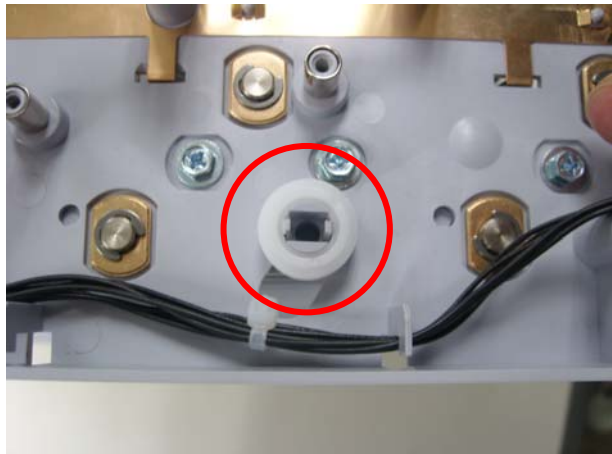
13. Remove 2 screws(green color) from the rear.



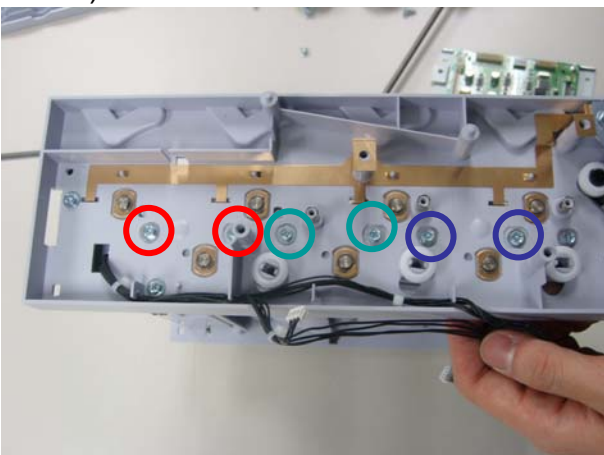
11. Remove the SPUR Gear after remove screw.



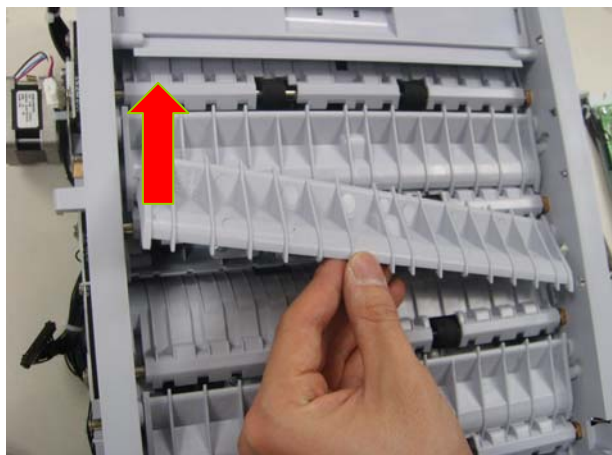
14. Remove the ROLLER:STACKER.



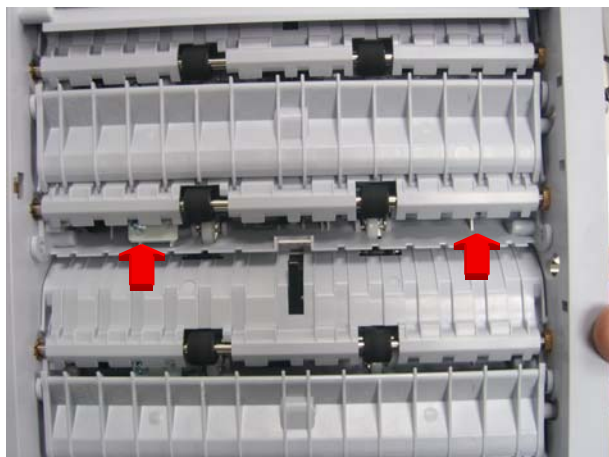
12. There are 3 Assy actuator shield. This manual describes disassebmlty procedure for middle shield. Remove 2 screws(green color) from the front.



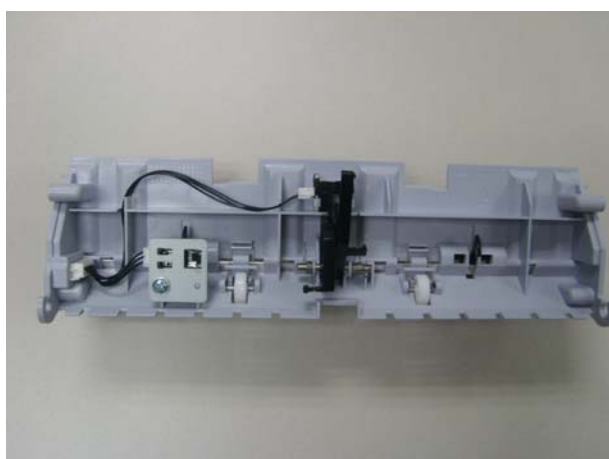
15. Remove the SEPARATE:PAWL:FEED by unhooking the side.



16. Push the Assy actuator shield to the direction of arrow. And Separate it from the opposite side.



17. Done



### 3.2 Finisher disassembly

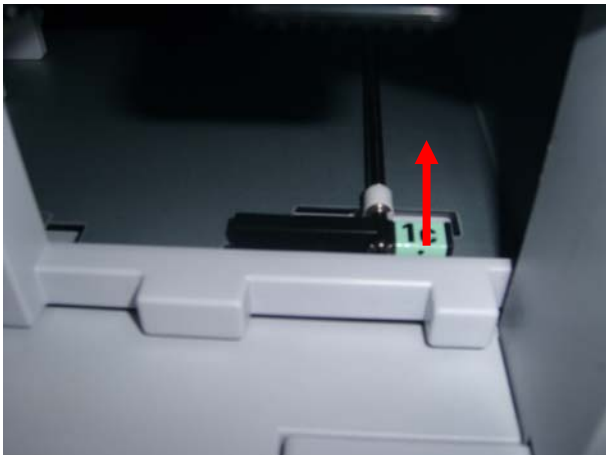
1. Unplug the connector.



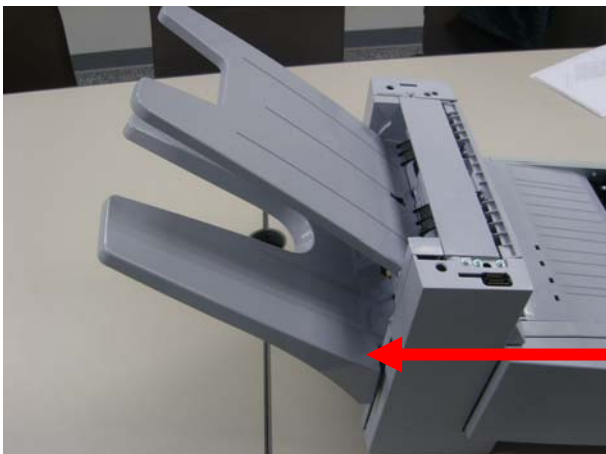
3. Remove the staple cartridge.



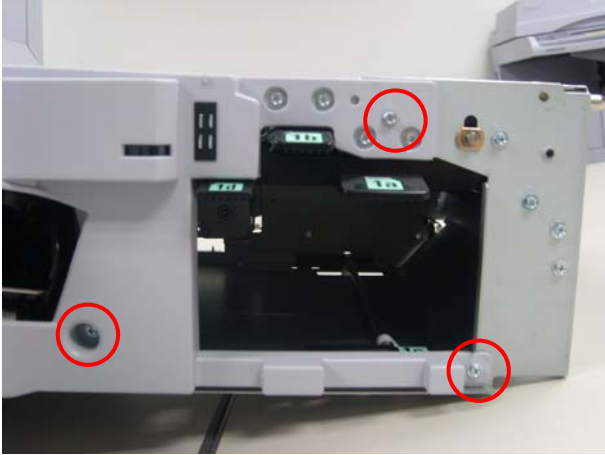
2. Keep the 1c lever pull up and remove the finisher unit from the SET.



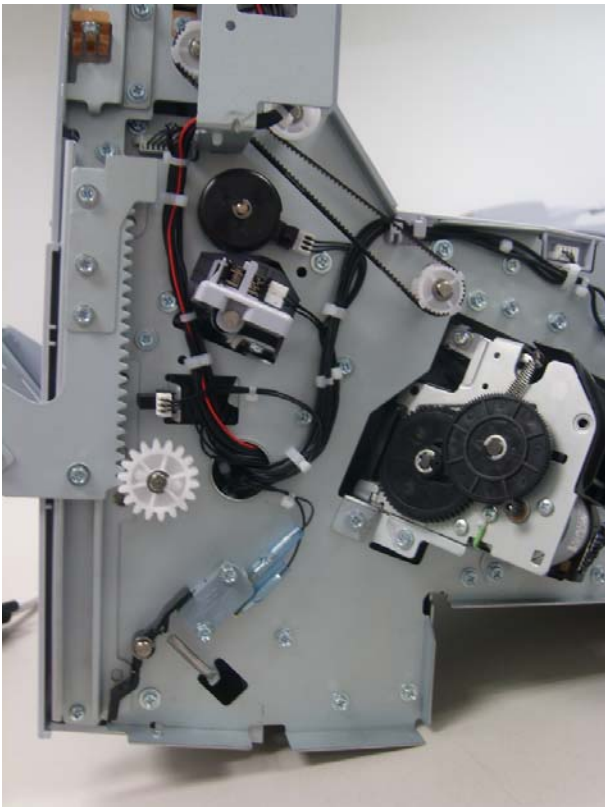
4. To remove the cover, remove the 2 screws.



5. Remove the 3 screws.



6. If some part such as sensor, switch in below picture is defective, replace it.



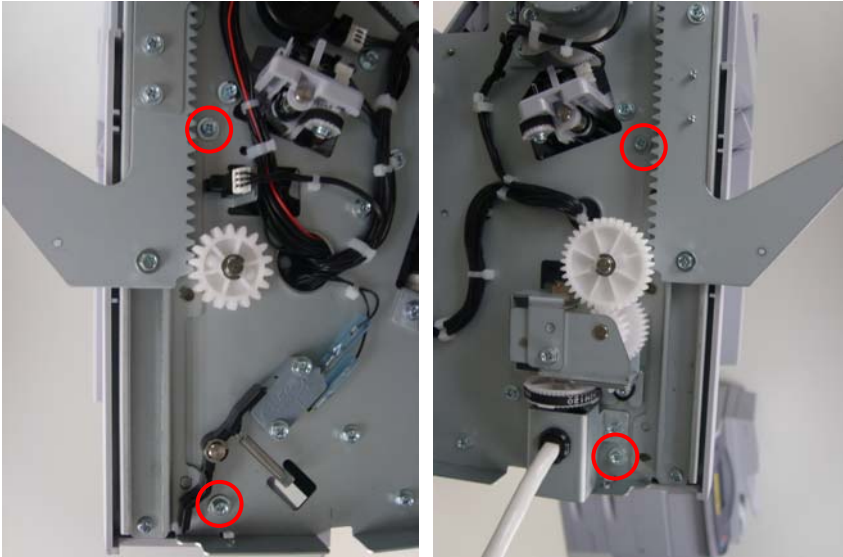
7. Remove the 3 screws and take off the cover.



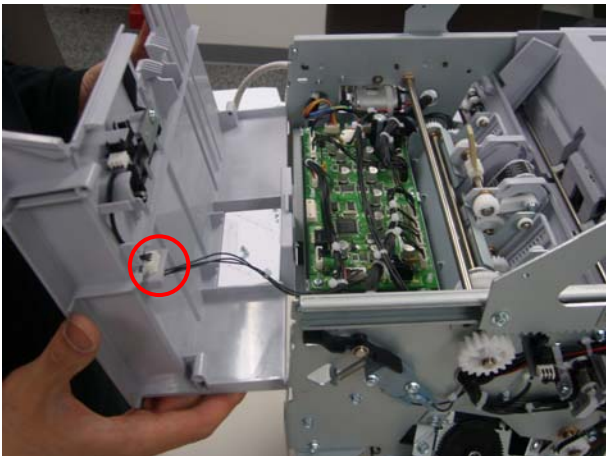
8. If some part in below picture is defective, replace it.



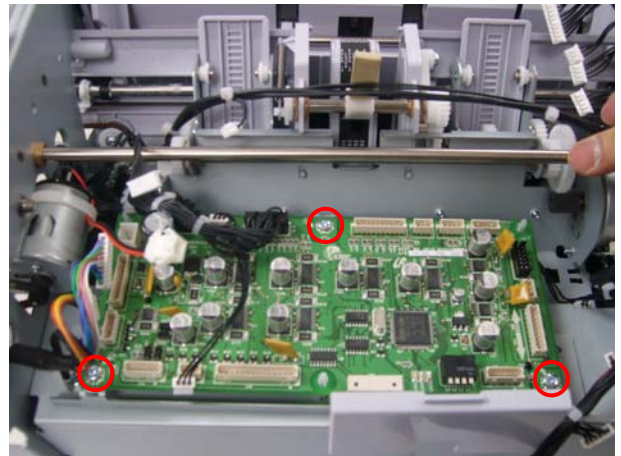
9. Remove the 4 screws from both side.



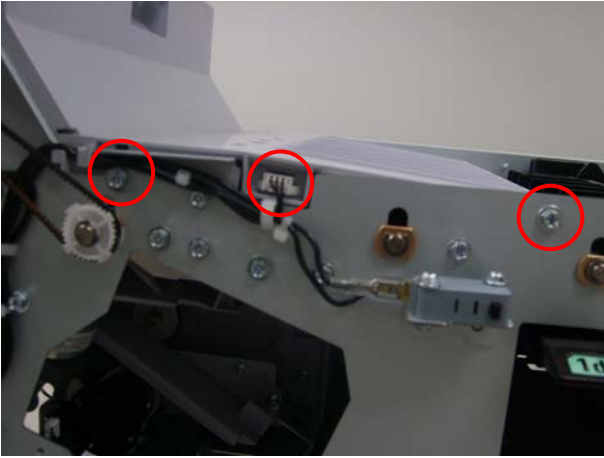
10. Open the cover and unplug the connector.



11. Remove the finisher board after remove the 3 screws.



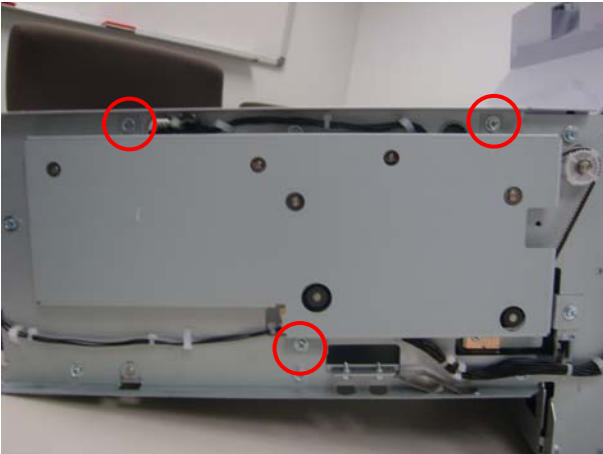
12. Remove the 3 screws.



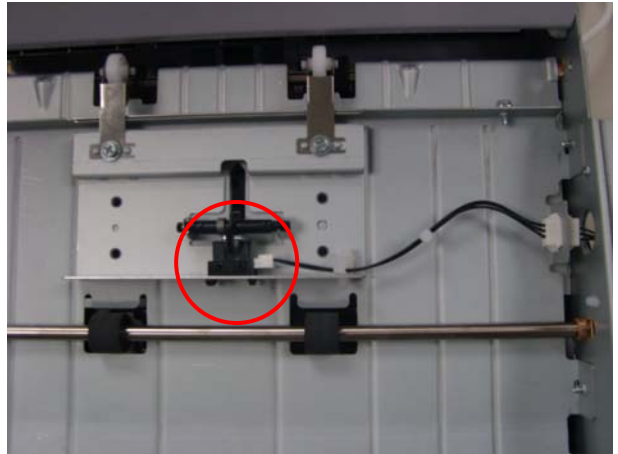
14. Remove



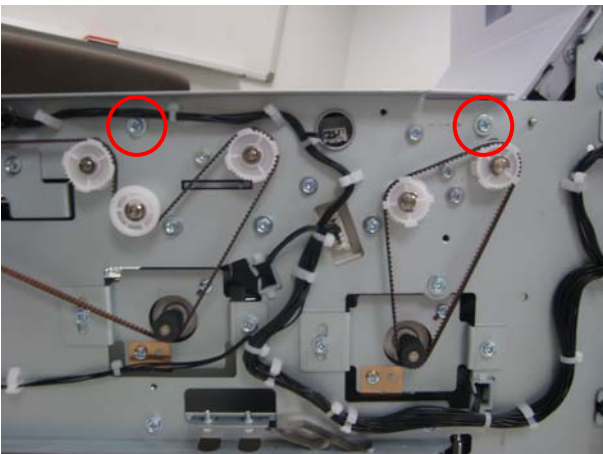
13. Remove the 3 screws.



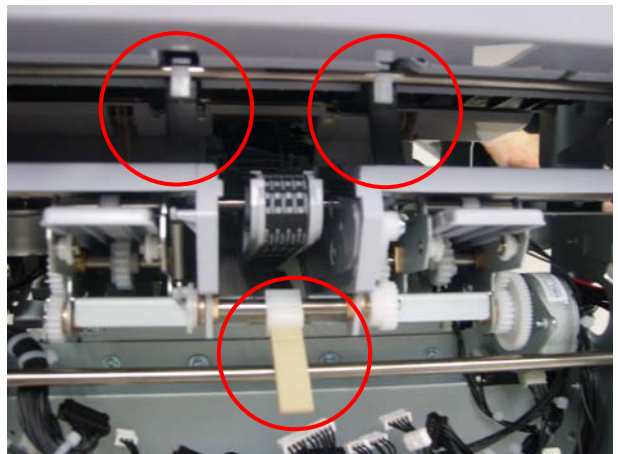
14. Remove the sensor.



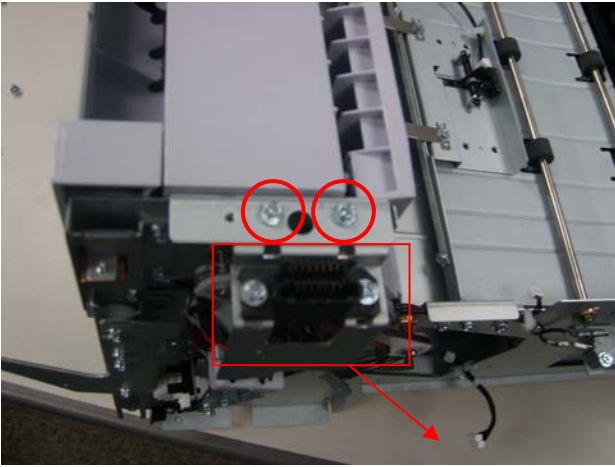
14. Remove the 2 screws.



14. Remove the paddle.



15. Remove the 2 screws.



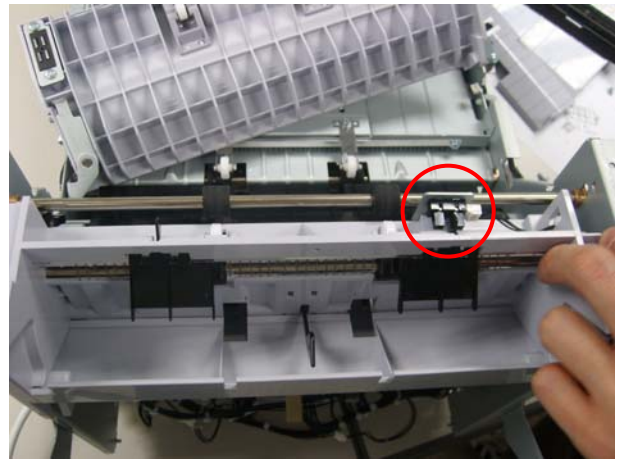
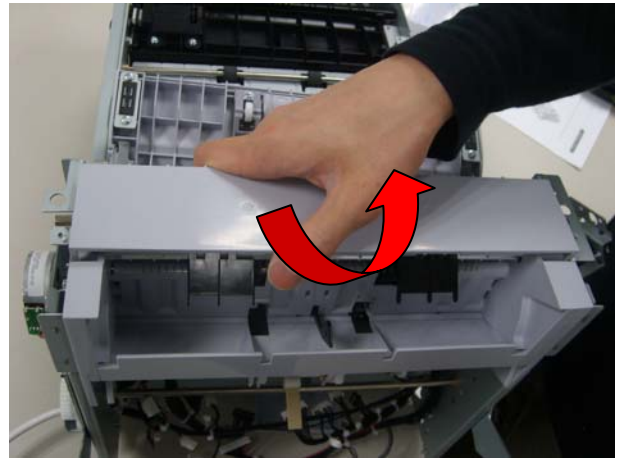
16. Remove the 2 screws.



17. Remove the 2 screws.



18. Open the top cover. If necessary, remove the sensor.



## 4. Troubleshooting

When an error occurs, first, you may follow an instruction on the control panel display to solve the problem.

Messages on the display indicates the machine's status or errors. Refer to the tables to understand the messages' meanings and correct the problem if necessary. Messages and their meanings are listed in alphabetical order.

### Note

- If a message is not in the table, reboot the power and try the printing job again. If the problem persists, call for service.
- When you call for service, provide the service representative with the contents of the display message.
- Some messages may not appear in the display depending on options or models.

Error message	Solution
Paper jam at exit of finisher	See Removing paper jam in the finisher" on page 4-1. "
Paper jam at exit of mailbox	See Removing paper jam in the mailbox" on page 4-3 "
Paper jam in front of finisher	See Removing paper jam in the finisher" on page 4-1 "
Paper jam inside finisher's duplex	See Removing paper jam in the finisher" on page 4-1 "
Paper jam inside mailbox	See Removing paper jam in the mailbox" on page 4-3 "
Paper jam inside of finisher	See Removing paper jam in the finisher" on page 4-1 "
Staple cartridge is empty. Replace it	See Replacing a stapler cartridge" on page 4-5 "
Staple cartridge is not installed. Install it in finisher	See Replacing a stapler cartridge" on page 4-5 "

### 4.1 Removing paper jam in the finisher

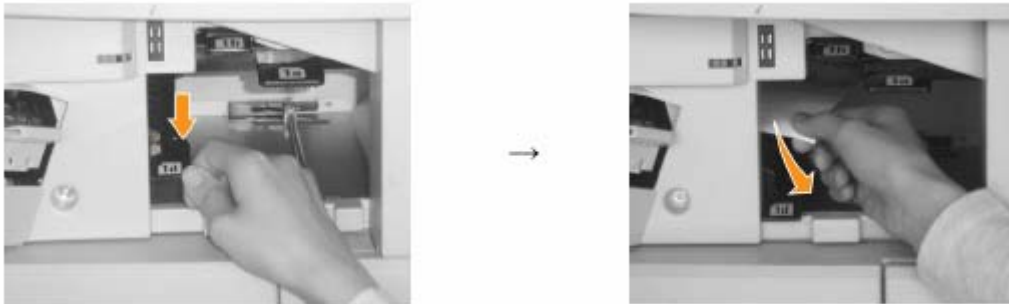
1. Check if there is a paper jam in the exit of the finisher. If there is one, remove it.



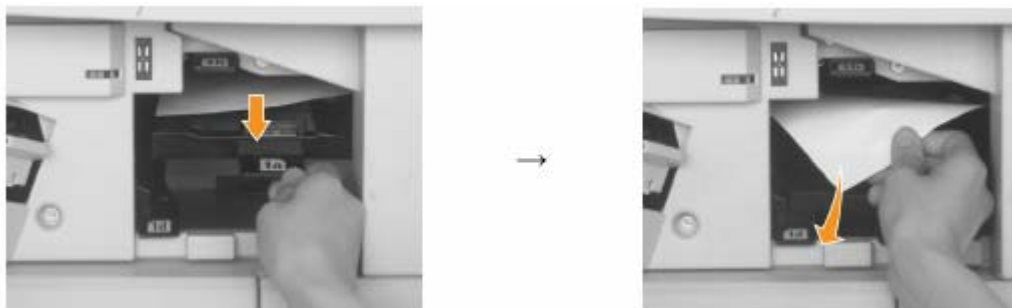
2. Open the front cover of the finisher.



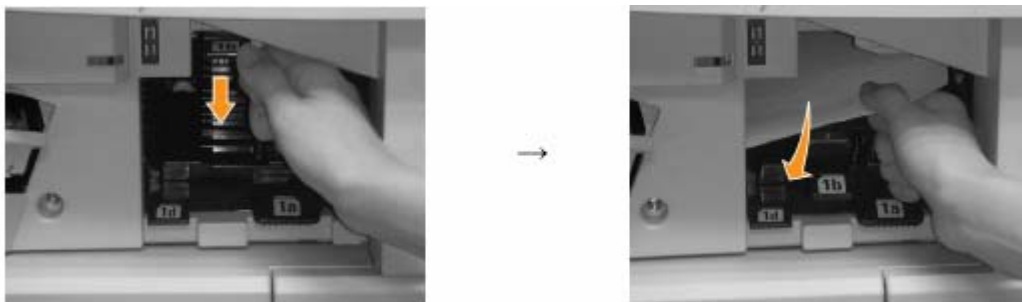
3. Pull down lever **1d** and check if there is a paper jam. If there is one, remove it and move the released parts to their proper places.



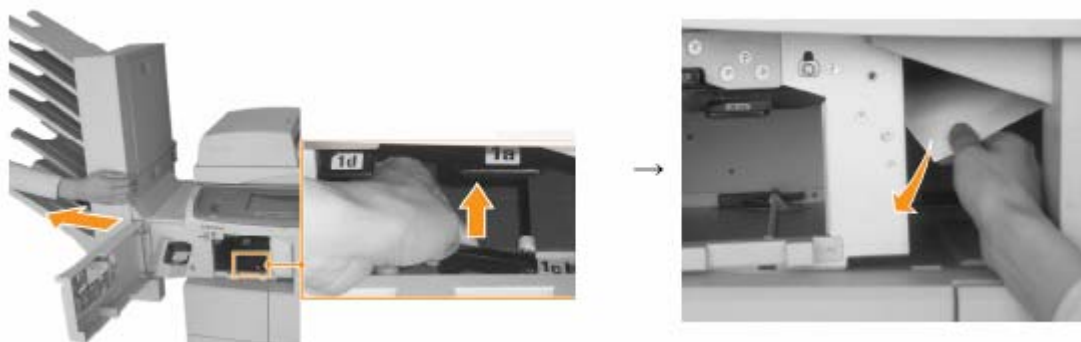
4. Pull down lever **1a** and check if there is a paper jam. If there is one, remove it and move the released parts to their proper places.



5. Pull down lever **1b** and check if there is a paper jam. If there is one, remove it and move the released parts to their proper places.



6. Pull out the finisher lifting lever **1c** up. In this case, at least two people must cooperate since the finisher is quite heavy. Remove the paper jam.



7. Slide the finisher in until it locks in place.



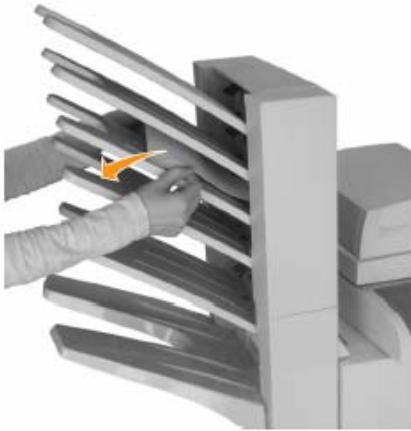
8. Lift up all the levers (1b, 1a, 1d).



9. Close the front cover.

## 4.2 Removing paper jam in the mailbox

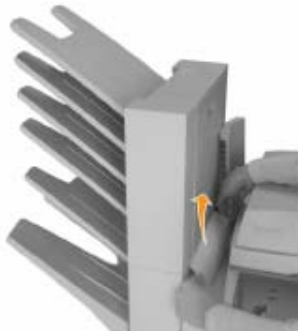
1. Check if a paper jam is in the exit of the mailbox. If there is one, remove it.



2. Open the mailbox cover and check if there is a paper jam. If there is one, remove it and move the released parts to their proper places.



3. Open the jam door and check if there is a paper jam. If there is one, remove it.



4. Close the jam door. Make sure all the parts are in the right positions.

## 4.3 Replacing a stapler cartridge

1. Open the finisher cover.



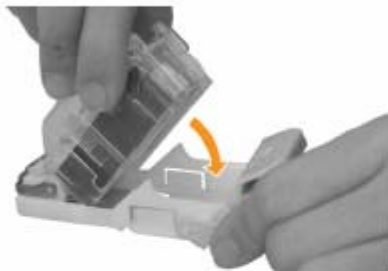
2. Pull the stapler unit out.



3. Lift the empty staple cartridge from the stapler unit.



4. Unpack the new staple cartridge.
5. Place the staple cartridge back into the stapler unit.



6. Slide the stapler unit in until it locks in place.



7. Close the finisher cover.

## 4.4 Problems and Solutions

### Error Code and Message

Code (SEC)	Errors & Faults message	Descriptions	Solution	Message type
07-000	Finisher Jam 0	Paper jammed in Finisher.	Open Front Cover in Finisher and remove jammed paper in Finisher or Fuser area, or uninstall finisher and remove jammed paper.	Error
07-001	Finisher Jam 1	Paper jammed in Finisher.	Open Front Cover in Finisher and remove jammed paper in Finisher. Open front door, lower guide 1a or 1b then clear	
07-002	Finisher Jam 2	Paper jammed in Finisher.	Pull out jammed paper from Finisher exit	
07-003	Finisher Duplex Jam	Paper jammed in Finisher.	Open Front Cover in Finisher, lower Guide 1a or 1b, and remove jammed paper.	Error
07-004	Finisher Bin Full	Finisher Stack full	Remove printed material from Finisher Stack Check empty/full Sensor	Error
07-005	Install Staple Cartridge	Staple Cartridge not installed	Install the staple cartridge following the steps explained on the back of the finisher door. If you want to continue the print job and disregard of this error message, go to Admin Setting to adjust the option.	Warning
07-006	Close Finisher Door	Finisher Door open	Close Finisher Door	Error
07-007	Finisher Interface Error	Communication error between Engine and Finisher	Check/Connect Interface connector.	Fault
07-008	Paddle Fault	Paddle unit is not operational	Open Finisher Door and check the Finisher, and close the Door If fault persists, Power Off/Power On	Fault
07-009	Front Jogger Fault	Front Jogger unit is not operational	Open Finisher Door and check the Finisher, and close the Door If fault persists, Power Off/Power On	Fault

Code (SEC)	Errors & Faults message	Descriptions	Solution	Message type
<b>07-010</b>	Rear Jogger Fault	Rear Jogger unit s not operational	Open the finisher door and clear any jammed paper (if there is). If this error message shows on the screen again, cycle power.	Fault
<b>07-011</b>	Support Finger Fault	Rear Jogger unit s not operational	Remove paper from the output tray (finisher). If this error message shows on the screen again, cycle power.	Fault
<b>07-012</b>	Ejector Fault	Ejector unit s not operational	Remove paper from the output tray (finisher). If this error message shows on the screen again, cycle power.	Fault
<b>07-013</b>	Stapler Fault	Stapler is not operational	Remove paper from the output tray (finisher) and open the finisher door to clear the jammed paper. If this error message shows on the screen again, cycle power.	Fault
<b>07-014</b>	Stacker Fault	Stacker unit s not operational	Remove paper from the output tray (finisher). If this error message shows on the screen again, cycle power.	Fault

**Paper does not feed into the machine**

Conditions	Cause	Solutions
The Slip of paper transporting or Skew has occurred.	Idle Roller pressure Spring is deformed.	Replace the Idle Roller pressure Spring.
	Exit force is decreased by Roller deformation.	Replace the defective Roller
	Exit force is decreased by environment.	Replace the defective Roller
Feed Roller does not work.	Interface Cable disconnection	Reconnect or replace the Interface Cable
	Connector is not connected properly.	Connect the Connector
	Feed Motor is defective.	Replace the Feed Motor
	PCBA is defective.	Replace the PCBA
The gear(pulley) is idling with motor.	Pressure between motor pivot and gear is defective.	Replace the Feed Motor.
Paper detection failure	Paper detection Sensor is defective.	Replace the Paper detection Sensor.
	Flapper/Actuator is defective.	Replace the Flapper/Actuator

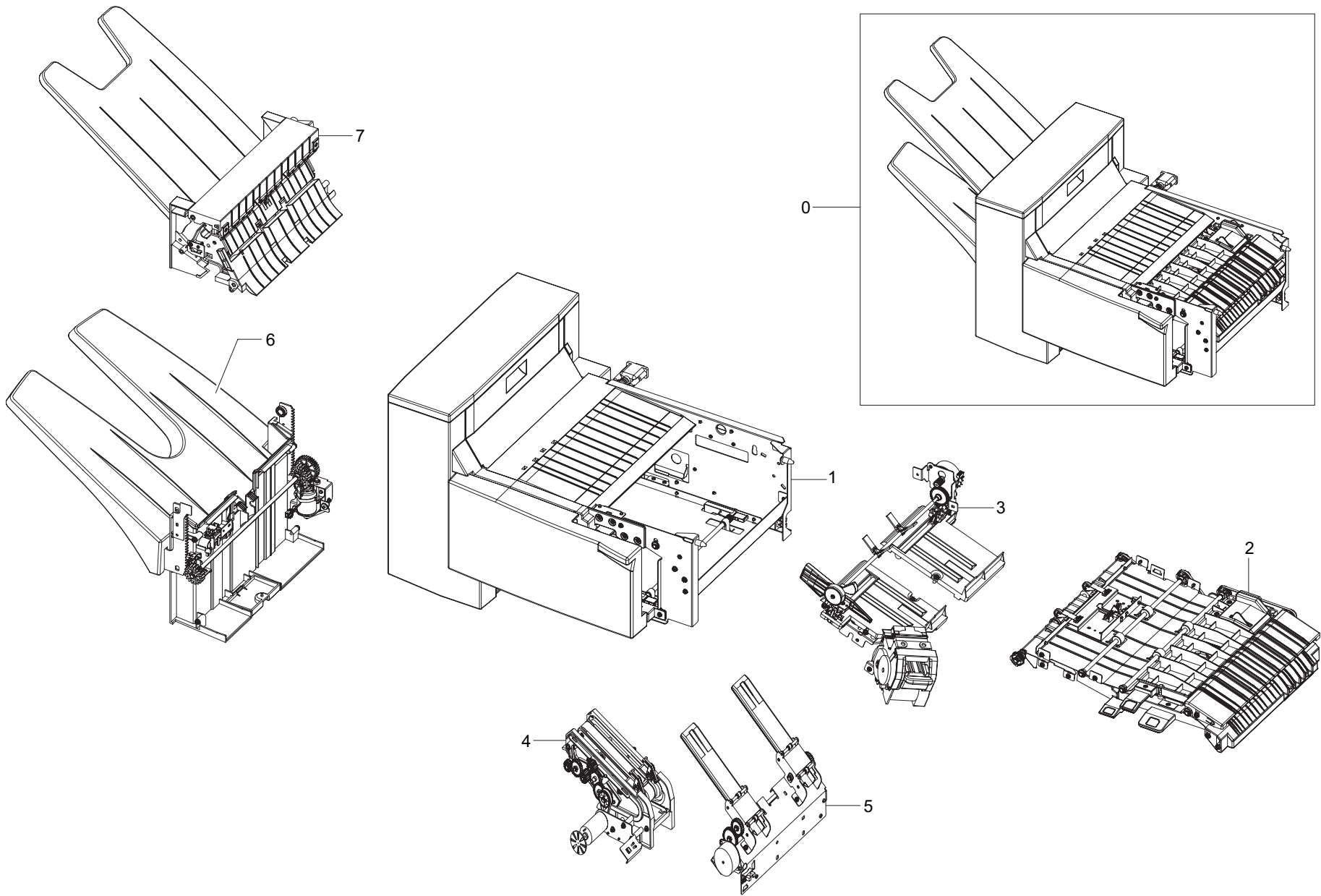
**Paper does not stack to the selected Bin**

Conditions	Cause	Solutions
Paper has not jammed and does not stack to the selected Bin.	Empty/Feed Sensor is defective.	Replace the Empty/Feed Sensor
	Flapper/Actuator of Empty/Feed Sensor is defective.	Replace the Flapper/Actuator.
Paper has jammed and does not stack to the selected Bin.	Gate switching Cam is defective.	Replace the Gate switching Cam.
	Gate switching Sensor is defective.	Replace the Gate switching Sensor.
	Gate switching Motor is defective.	Replace the Gate switching Motor.
	Gate switching Sensor/Motor Connector is not connected properly.	Replace the Connector.
	Gate switching Drive IC is defective.	Replace the PCBA.

**The status of paper stack is defective.**

Conditions	Cause	Solutions
Deformation of Tray	Tray is deformed.	Replace the Tray.
Paper detection failure	Paper transport/Stack detection Sensor is defective.	Replace the Paper transport/Stack detection Sensor.
	Actuator is defective.	Replace the Actuator.

# 1. MAIN



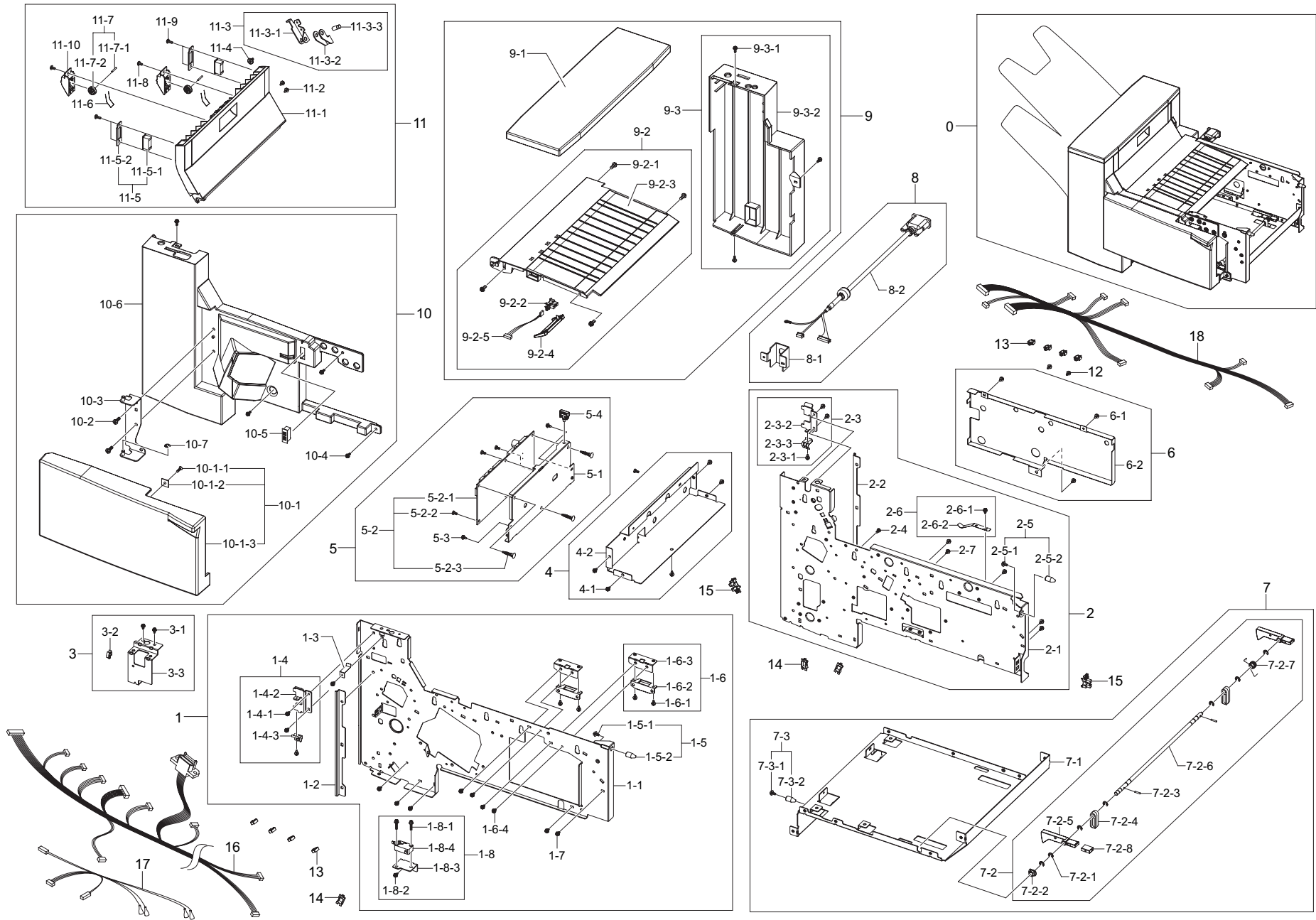
**MAIN Parts List**

SA : SERVICE AVAILABLE, SNA : SERVICE not AVAILABLE

Drawing#	SEC_Code	Description	QT'y	Service	Remark
0	JC96-00942A	SCX-FIN20S	1	SNA	
1	/	FRAME UNIT	1	SNA	KRDC(JR10 1000)
2	/	FEED UNIT	1	SNA	KRDC(JR10 2000)
3	/	COMPILE UNIT	1	SNA	KRDC(JR10 3000)

Drawing#	SEC_Code	Description	QT'y	Service	Remark
4	JC81-03773B	EJECT UNIT	1	SA	
5	/	EXTENTION TRAY UNIT	1	SNA	KRDC(JR10 5000)
6	/	STACKER UNIT	1	SNA	KRDC(JR10 6000)
7	/	TOP TRAY UNIT	1	SNA	KRDC(JR10 7000)

## 2. Frame Unit



## Frame Unit Parts List

SA : SERVICE AVAILABLE, SNA : SERVICE not AVAILABLE

Drawing#	SEC_Code	Description	QT'y	Service	Remark
0	/	FRAME UNIT	1	SNA	KRDC(JR10 1000)
1	/	FRAME:FRONT:SUB ASSY	1	SNA	KRDC(JR10 1120)
1-1	/	FRAME:FRONT	1	SNA	KRDC(JR10 1216A)
1-2	/	BKT:ROLL GUIDE:TRAY MOVE	1	SNA	KRDC(SJ10 1281A)
1-3	/	EARTH PLATE:TOP TRAY:ANTI STATIC:TOP TRAY	1	SNA	KRDC(JR10 1232A)
1-4	/	JOINT BKT:FRONT:SET	1	SNA	KRDC(JR10 1126)
1-4-1	/	HEXAGON HEADED SCREW:M3×6:T3	3	SNA	KRDC(0451 3006N)
1-4-2	/	JOINT BKT:FRONT FRAME	1	SNA	KRDC(JR10 1202A)
1-4-3	/	EARTH PLATE:JOINT	1	SNA	KRDC(JR10 1234A)
1-5	/	SET STUD:SUB ASSY	1	SNA	KRDC(SJ10 1113)
1-5-1	/	HEXAGON HEADED SCREW:M4×6:PC	1	SNA	KRDC(0360 4006N)
1-5-2	/	STUD:SET	1	SNA	KRDC(SJ10 1490A)
1-6	/	MAGNETIC CATCH:SUB ASSY	1	SNA	KRDC(SJ10 1124)
1-6-1	/	BIND HEADED SCREW:M3×6:PC	4	SNA	KRDC(0353 0060N)
1-6-2	JC81-03468A	ASSY:MAGNET:3.5KGF	2	SA	
1-6-3	/	BKT:MAGNET:GUIDE	2	SNA	KRDC(SJ10 1297A)
1-6-4	/	HEXAGON HEADED SCREW:M3×6:T3	4	SNA	KRDC(0451 3006N)
1-7	/	HEXAGON HEADED SCREW:M3×6:T3	5	SNA	KRDC(0451 3006N)
1-8	/	DOOR I/L SWITH:SUB ASSY	1	SNA	KRDC(SJ10 1122)
1-8-1	/	HEXAGON HEADED SCREW:M3×14:PC	2	SNA	KRDC(0360 3014N)
1-8-2	/	HEXAGON HEADED SCREW:M3×6:T3	1	SNA	KRDC(0451 3006N)
1-8-3	/	BKT:INTERLOCK:DOOR OPEN	1	SNA	KRDC(SJ10 1298A)
1-8-4	JC81-03469A	MICRO SWITCH:VP333A-0D	1	SA	
2	/	FRAME:REAR:SUB ASSY	1	SNA	KRDC(JR10 1130)
2-1	/	FRAME:REAR	1	SNA	KRDC(JR10 1218A)

Drawing#	SEC_Code	Description	QT'y	Service	Remark
2-2	/	BKT:ROLL GUIDE:TRAY MOVE	1	SNA	KRDC(SJ10 1281A)
2-3	/	JOINT BKT:REAR:SET	1	SNA	KRDC(JR10 1136)
2-3-1	/	HEXAGON HEADED SCREW:M3×6:T3	3	SNA	KRDC(0451 3006N)
2-3-2	/	JOINT BKT:REAR FRAME	1	SNA	KRDC(JR10 1204A)
2-3-3	/	EARTH PLATE:JOINT	1	SNA	KRDC(JR10 1234A)
2-4	/	BIND HEADED SCREW:M3×6:PC	1	SNA	KRDC(0353 0060N)
2-5	/	SET STUD:SUB ASSY	1	SNA	KRDC(SJ10 1113)
2-5-1	/	HEXAGON HEADED SCREW:M4×6:PC	1	SNA	KRDC(0360 4006N)
2-5-2	/	STUD:SET	1	SNA	KRDC(SJ10 1490)
2-6	/	LEAF SPRING:EARTH:SET	1	SNA	KRDC(SJ10 1134)
2-6-1	/	HEXAGON HEADED SCREW:M3×6:T3	2	SNA	KRDC(0451 3006N)
2-6-2	/	LEAF SPRING:EARTH	2	SNA	KRDC(SJ10 1279)
2-7	/	HEXAGON HEADED SCREW:M3×6:T3	5	SNA	KRDC(0451 3006N)
3	/	BKT:DRAWER CN:FRAME:SET	1	SNA	KRDC(JR10 1189)
3-1	/	HEXAGON HEADED SCREW:M3×6:T3	2	SNA	KRDC(0451 3006N)
3-2	/	MICRO WIRE SADDLE	1	SNA	KRDC(1105 0232)
3-3	/	BKT:DRAWER CN:FRAME	1	SNA	KRDC(JR10 1220A)
4	/	BKT:SUPPORT:EJECTOR:SET	1	SNA	KRDC(JJR10 1140)
4-1	/	HEXAGON HEADED SCREW:M3×6:T3	5	SNA	KRDC(0451 3006N)
4-2	/	BKT:SUPPORT:EJECTOR	1	SNA	KRDC(JR10 1230A)
5	/	MAIN PCB:SUB ASSY	1	SNA	KRDC(SJ10 1140)
5-1	/	BKT:MAIN PCB	1	SNA	KRDC(SJ10 1289A)
5-2	/	PCB:SET	1	SNA	KRDC(SJ10 1141)
5-2-1	JC81-07242A	AS-PCB MAIN ASSY	1	SA	
5-2-2	/	BIND HEADED SCREW:M3×6:PC	3	SNA	KRDC(0353 0060N)

## Frame Unit Parts List

SA : SERVICE AVAILABLE, SNA : SERVICE not AVAILABLE

Drawing#	SEC_Code	Description	QT'y	Service	Remark
5-2-3	/	BUTTON LOCKING SUPPORT:BLSS 12	3	SNA	KRDC(1181 11209)
5-3	/	HEXAGON HEADED SCREW:M3×6:T3	2	SNA	KRDC(0451 3006N)
5-4	/	SIDE LOCKING SADDLE	1	SNA	KRDC(1105 03101)
6	/	REAR COVER BKT:SET	1	SNA	KRDC(JR10 1170)
6-1	/	HEXAGON HEADED SCREW:M3×6:T3	3	SNA	KRDC(0451 3006N)
6-2	/	PLATE:COVER REAR:FRAME	1	SNA	KRDC(JR10 1222A)
7	/	BASE:SUB ASSY	1	SNA	KRDC(JR10 1110)
7-1	/	FRAME:BASE	1	SNA	KRDC(SJ10 1221C)
7-2	/	SET HOOK:SUB ASSY	1	SNA	KRDC(SJ10 1111)
7-2-1	/	E-RING:Φ4	7	SNA	KRDC(1720 0040G)
7-2-2	JC61-00423A	BUSH-6_D	1	SA	
7-2-3	/	PARALLEL PIN:Φ2×10	2	SNA	KRDC(P632 0100G)
7-2-4	/	GUIDE:SET	2	SNA	KRDC(SJ10 1361)
7-2-5	/	HOOK:INSTALL	2	SNA	KRDC(SJ10 1373)
7-2-6	/	SHAFT:HOOK:SET	1	SNA	KRDC(SJ10 1480A)
7-2-7	/	T-SPRING:HOOK:SET	1	SNA	KRDC(SJ10 1683)
7-2-8	/	LABEL:HANDLE 1c	1	SNA	KRDC(SJ10 2796B)
7-3	/	SET STUD:SUB ASSY	1	SNA	KRDC(SJ10 1113)
7-3-1	/	HEXAGON HEADED SCREW:M4×6:PC	1	SNA	KRDC(0360 4006N)
7-3-2	/	STUD:SET	1	SNA	KRDC(SJ10 1490A)
8	/	INTERFACE M/H:SET	1	SNA	KRDC(SJ10 1187)
8-1	/	BKT:CORD BUSH:I/F	1	SNA	KRDC(SJ10 1285B)
8-2	JC81-03470A	AS-MH INTERFACE ASSY	1	SA	
9	/	EXTERIOR:ASSY	1	SNA	KRDC(JR10 1150)
9-1	JC81-07243A	AS-COVER TOP	1	SA	
9-2	JC81-07245A	AS-DUPLEX GUIDE SUB ASSY	1	SA	

Drawing#	SEC_Code	Description	QT'y	Service	Remark
9-2-1	/	HEXAGON HEADED SCREW:M4×10:T2	4	SNA	KRDC(0450 4010N)
9-2-2	0604-001095	PI SENSOR:GP1S73P2	1	SA	
9-2-3	/	COVER:DUPLEX:FRAME	1	SNA	KRDC(JR10 1302A)
9-2-4	/	ACTUATOR:JAM DETECT:TOP TRAY	1	SNA	KRDC(JR10 8350A)
9-2-5	/	ASSY:MH:GATE JAM SNR	1	SNA	KRDC(JR10 7313A)
9-3	/	REAR COVER:SET	1	SNA	KRDC(JR10 11519)
9-3-1	/	HEXAGON HEADED SCREW:M3×8:T3	3	SNA	KRDC(0451 3008N)
9-3-2	JC81-07244A	AS-COVER REAR	1	SA	
10	/	FRONT COVER:SET ASSY	1	SNA	KRDC(JR10 1160)
10-1	/	ASSY:DOOR COVER	1	SNA	KRDC(JR10 1165)
10-1-1	/	COUNTERSINK SCREW:M3×10:T2	1	SNA	KRDC(0323 0102N)
10-1-2	/	MAGNET CATCH PLATE:TB	1	SNA	KRDC(CF10 T209)
10-1-3	JC81-07246A	AS-COVER DOOR FRONT	1	SA	
10-2	/	BIND SCREW:M4×12:T2	2	SNA	KRDC(0414 0122N)
10-3	/	ASSY:BKT:HINGE DOOR:FRAME	1	SNA	KRDC(JR10 1206A)
10-4	/	HEXAGON HEADED SCREW:M3×8:T3	5	SNA	KRDC(0451 3008N)
10-5	JC81-07247A	AS-MAGNET BY3_32_1	1	SA	
10-6	JC81-07248A	COVER:FRONT	1	SA	
10-7	/	E-RING:Φ4	1	SNA	KRDC(1720 0040G)
11	/	COVER:JAM GUIDE TOP:ASSY	1	SNA	KRDC(JR10 1180)
11-1	JC81-07249A	COVER:JAM GUIDE TOP:FRAME	1	SA	
11-2	/	HEXAGON HEADED SCREW:M3×6:T3	2	SNA	KRDC(0451 3006N)
11-3	/	HINGE BKT:JAM GUIDE:SUB ASSY	1	SNA	KRDC(JR10 1187)

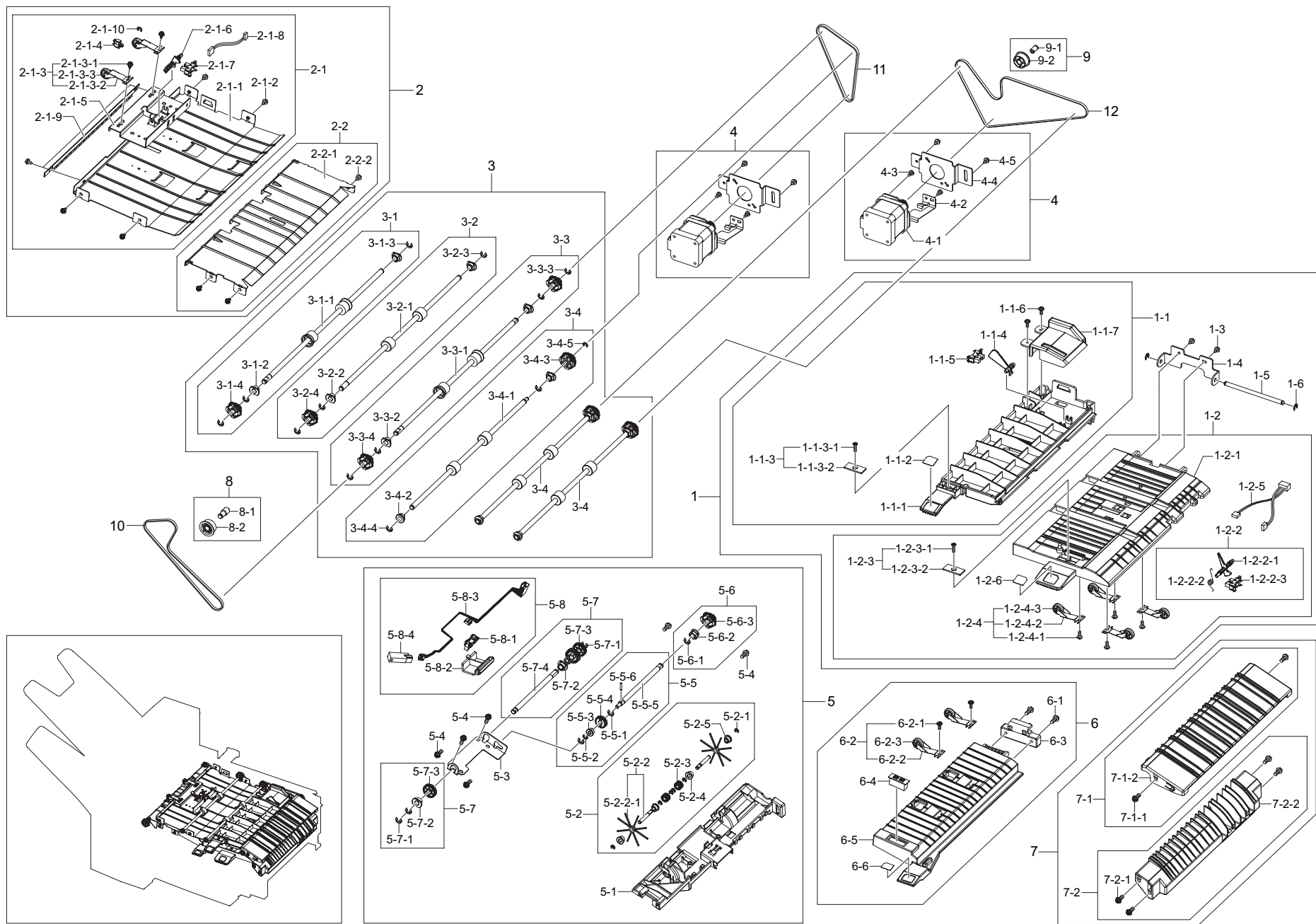
## Frame Unit Parts List

SA : SERVICE AVAILABLE, SNA : SERVICE not AVAILABLE

Drawing#	SEC_Code	Description	QT'y	Service	Remark
11-3-1	/	HINGE BKT:JAM GUIDE UPPER:FRAME	1	SNA	KRDC(JR10 1210A)
11-3-2	/	HINGE BKT:JAM GUIDE LOWER:FRAME	1	SNA	KRDC(JR10 1212A)
11-3-3	/	SHAFT:JAM GUIDE HINGE:FRAME	1	SNA	KRDC(JR10 1404A)
11-4	/	STEP SCREW_M3x6 6_20	1	SNA	KRDC(JR10 1408 A)
11-5	/	BKT:MAGNET:SIDE DOOR:SUB ASSY	2	SNA	KRDC(JR10 1185)
11-5-1	JC81-07247A	AS-MAGNET BY3_32_1	2	SA	
11-5-2	/	BKT:MAGNET:SIDE DOOR	2	SNA	KRDC(JR10 1224A)
11-6	JC81-07272A	AS-T_SPRING GUIDE M/B	2	SA	
11-7	JC81-07268A	AS-ROLLER IDLE FEED ASSY	2	SA	
11-7-1	/	PARALLEL PIN:Φ2×14	2	SNA	KRDC(P632 0140G)
11-7-2	/	ROLLER:IDLE:FEED	2	SNA	KRDC(SJMB 2306A)

Drawing#	SEC_Code	Description	QT'y	Service	Remark
11-8	/	PAN WASHER HEADED SCREW:M3×6:T2	2	SNA	KRDC(0965 3006N)
11-9	/	BIND HEADED SCREW:M3×8:T2	4	SNA	KRDC(0452 3008N0)
11-10	/	BKT:MAGNET:SIDE DOOR:SUB ASSY	2	SNA	KRDC(JR10 1185)
12	/	HEXAGON HEADED SCREW:M3×6:T3	2	SNA	KRDC(0451 3006N)
13	/	MICRO WIRE SADDLE	14	SNA	KRDC(1105 0232)
14	/	COVER SADDLE:DS-1	3	SNA	KRDC(1105 0328)
15	0604-001095	PI SENSOR:GP1S73P2	2	SA	
16	/	ASSY:M/H:FRONT FRAME	1	SNA	KRDC(SJ10 8310B)
17	/	ASSY:M/H:INTERLOCK	1	SNA	KRDC(SJ10 8330)
18	/	ASSY:M/H:REAR FRAME	1	SNA	KRDC(JR10 8320A)

### 3. Feed Unit



## Feed Unit Parts List

SA : SERVICE AVAILABLE, SNA : SERVICE not AVAILABLE

Drawing#	SEC_Code	Description	QT'y	Service	Remark
0	/	FEED UNIT	1	SNA	KRDC(JR10 2000)
1	/	JAM GUIDE:SET ASSY	1	SNA	KRDC(SJ10 2130)
1-1	/	DUPLEX GUIDE:SUB ASSY	1	SNA	KRDC(SJ10 2132)
1-1-1	/	GUIDE:OPEN:DUPLEX	1	SNA	KRDC(SJ10 2370A)
1-1-2	/	LABEL:HANDLE 1b	1	SNA	KRDC(SJ10 2794)
1-1-3	/	MAGNETIC PLATE:SUB	1	SNA	KRDC(SJ10 1165)
1-1-3-1	/	COUNTERSINK SCREW:M3×10:T2	1	SNA	KRDC(0323 0102N)
1-1-3-2	/	MAGNET CATCH PLATE:12×26	1	SNA	KRDC(AG90 1226)
1-2	/	JAM GUIDE:SUB ASSY	1	SNA	KRDC(SJ10 2135)
1-2-1	/	GUIDE:OPEN	1	SNA	KRDC(JS10 2330)
1-2-2	/	FEED SENSOR:SET	1	SNA	KRDC(SJ10 2137)
1-2-2-1	/	ACTUATOR:FEED	1	SNA	KRDC(SJ10 23841)
1-2-2-2	/	T-SPRING:ACTUATOR:FEED	1	SNA	KRDC(SJ10 2682)
1-2-2-3	0604-001095	PI SENSOR:GP1S73P2	1	SA	
1-2-3	/	MAGNETIC PLATE:SUB	1	SNA	KRDC(SJ10 1165)
1-2-3-1	/	COUNTERSINK SCREW:M3×10:T2	1	SNA	KRDC(0323 0102N)
1-2-3-2	/	MAGNET CATCH PLATE:12×26	1	SNA	KRDC(AG90 1226)
1-2-4	/	IDLE ROLLER:SET ASSY	1	SNA	KRDC(SJ10 213)
1-2-4-1	/	PAN WASHER HEADED SCREW:M3×8:T2	4	SNA	KRDC(0965 3008N)
1-2-4-2	/	LEAF SPRING:FEED	4	SNA	KRDC(SJ10 2202)
1-2-4-3	/	ROLLER:IDLE:FEED	4	SNA	KRDC(SJ10 2302)
1-2-5	/	ASSY:M/H:MID SNR	1	SNA	KRDC(SJ10 8350B)
1-2-6	/	LABEL:HANDLE 1a	1	SNA	KRDC(SJ10 2792A)
1-3	/	HEXAGON HEADED SCREW:M3×6:T3	2	SNA	KRDC(0451 3006N)
1-4	/	BKT:HINGE:GUIDE	1	SNA	KRDC(SJ10 2204A)
1-5	/	SHAFT:HINGE:GUIDE	1	SNA	KRDC(SJ10 2404A)
1-6	/	E-RING:Φ4	2	SNA	KRDC(1720 0040G)

Drawing#	SEC_Code	Description	QT'y	Service	Remark
2	/	EXIT GUIDE:SET ASSY	1	SNA	KRDC(JR10 2150)
2-1	/	UPPER EXIT GUIDE:SET	1	SNA	KRDC(JR10 2152)
2-1-1	/	GUIDE PLATE:EXIT:FEED	1	SNA	KRDC(JR10 2204A)
2-1-2	/	HEXAGON HEADED SCREW:M3×6:T3	4	SNA	KRDC(0451 3006N)
2-1-3	/	IDLE ROLLER:SET ASSY	2	SNA	KRDC(SJ10 2143)
2-1-3-1	/	HEXAGON HEADED SCREW:M3×6:T3	2	SNA	KRDC(0451 3006N)
2-1-3-2	/	LEAF SPRING:FEED	2	SNA	KRDC(SJ10 2202)
2-1-3-3	/	ROLLER:IDLE:FEED	2	SNA	KRDC(SJ10 2302)
2-1-4	/	MICRO WIRE SADDLE	1	SNA	KRDC(1105 0232)
2-1-5	/	BKT:ROLLER:IDLE	1	SNA	KRDC(SJ10 2224B)
2-1-6	/	ACTUATOR:FEED	1	SNA	KRDC(SJ10 2384)
2-1-7	0604-001095	PI SENSOR:GP1S73P2	1	SA	
2-1-8	/	ASSY:M/H:EXIT SNR	1	SNA	KRDC(SJ10 8340B)
2-1-9	JC81-07254A	AS-ANTI-STATIC BRUSH FEED		SA	
2-1-10	/	E-RING:Φ3	1	SNA	KRDC(1720 0030G)
2-2	/	LOWER EXIT GUIDE:SET	1	SNA	KRDC(SJ10 2141)
2-2-1	/	GUIDE:EXIT:LOWER	1	SNA	KRDC(SJ10 2226F)
2-2-2	/	HEXAGON HEADED SCREW:M3×6:T3	4	SNA	KRDC(0451 3006N)
3	/	FEED ROLLER:SET ASSY	1	SNA	KRDC(JR10 2160)
3-1	/	ENTRANCE ROLLER:TOP TRAY:SET	1	SNA	KRDC(JR10 2163)
3-1-1	/	ROLLER:EXIT TOP:FEED	1	SNA	KRDC(JR10 2604A)
3-1-2	JC61-00423A	BUSH-6_D	2	SA	
3-1-3	/	E-RING:Φ4	3	SNA	KRDC(1720 0040G)
3-1-4	JC81-03517A	TIMING PULLEY:T30S2M:D-CUT	1	SA	
3-2	/	EXIT ROLLER:TOP TRAY:SET	1	SNA	KRDC(JR10 2164)
3-2-1	JC81-07251A	AS-ROLLER MAIN FEED	1	SA	
3-2-2	JC61-00423A	BUSH-6_D	2	SA	

## Feed Unit Parts List

SA : SERVICE AVAILABLE, SNA : SERVICE not AVAILABLE

Drawing#	SEC_Code	Description	QT'y	Service	Remark
3-2-3	/	E-RING:Φ4	3	SNA	KRDC(1720 0040G)
3-2-4	JC81-03517A	TIMING PULLEY:T30S2M:D-CUT	1	SA	
3-3	/	EXIT ROLLER:SET	1	SNA	KRDC(JR10 2162)
3-3-1	JC81-07250A	AS-ROLLER EXIT FEED	1	SA	
3-3-2	JC61-00423A	BUSH-6_D	2	SA	
3-3-3	/	E-RING:Φ4	4	SNA	KRDC(1720 0040G)
3-3-4	JC81-03517A	TIMING PULLEY:T30S2M:D-CUT	2	SA	
3-4	/	ENTRANCE ROLLER:SET	3	SNA	KRDC(JR10 21618)
3-4-1	JC81-03485A	ROLLER:ENT	3	SA	
3-4-2	JC61-00423A	BUSH-6_D	6	SA	
3-4-3	JC81-03515A	AS-PULLEY T33S2M	3	SA	
3-4-4	/	E-RING:Φ4	6	SNA	KRDC(1720 0040G)
3-4-5	/	E-RING:Φ3	3	SNA	KRDC(1720 0030G)
4	/	FEED MOTOR:SET	2	SNA	KRDC(JR10 2171)
4-1	JC81-03479A	ASSY:HB MOTOR:S2M19T	2	SA	
4-2	/	EARTH PLATE:MOTOR:FEED	2	SNA	KRDC(JR10 2240A)
4-3	/	BIND HEADED SCREW:M3×6:PC	4	SNA	KRDC(0353 0060N)
4-4	/	BKT:MOTOR:FEED:EXIT	2	SNA	KRDC(SJ10 2208B)
4-5	/	HEXAGON HEADED SCREW:M3×6:T3	4	SNA	KRDC(0451 3006N)
5	JC81-03771A	GUIDE:COMPILE:ASSY	1	SA	
5-1	/	GUIDE:COMPILE:FILM:ASSY	1	SNA	KRDC(SJ10 2119A)
5-2	/	SUB PADDLE:SET	1	SNA	KRDC(SJ10 2111)
5-2-1	/	E-RING:Φ2.5	6	SNA	KRDC(1720 0025G)
5-2-2	JC81-03506A	PADDLE:SUB:ASSY	2	SA	
5-2-2-1	/	PADDLE:SUB	2	SNA	KRDC(SJ10 2658)
5-2-3	JC81-03505A	GEAR:SUB PADDLE:Z18:M05	2	SA	
5-2-4	JC61-00424A	BUSH-4_D	4	SA	
5-3	/	BKT:PADDLE:SUB	1	SNA	KRDC(SJ10 2232A)
5-4	/	HEXAGON HEADED SCREW:M4×10:T2	6	SNA	KRDC(0450 4010N)

Drawing#	SEC_Code	Description	QT'y	Service	Remark
5-5	/	SUB PADDLE GEARING:2nd STEP	1	SNA	KRDC(SJ10 2115)
5-5-1	/	E-RING:Φ4	2	SNA	KRDC(1720 0040G)
5-5-2	/	E-RING:Φ3	1	SNA	KRDC(1720 0030G)
5-5-3	JC61-00424A	BUSH-4_D	1	SA	
5-5-4	JC81-03518A	GEAR:SUB PADDLE:Z18:M08	1	SA	
5-5-5	/	SHAFT:TRANS:SUB PADDLE:FEED		SNA	KRDC(SJ10 2408A)
5-5-6	/	PARALLEL PIN:Φ2×10	1	SNA	P632 0100G
5-6	/	SUB PADDLE DRIVE PULLEY:SET	1	SNA	KRDC(SJ10 2117)
5-6-1	/	E-RING:Φ4	2	SNA	KRDC(1720 0040G)
5-6-2	JC61-00423A	BUSH-6_D	1	SA	
5-6-3	JC81-03517A	TIMING PULLEY:T30S2M:D-CUT	1	SA	
5-7	/	SUB PADDLE GEARING:1st STEP	1	SNA	KRDC(SJ10 2114)
5-7-1	/	E-RING:Φ4	4	SNA	KRDC(1720 0040G)
5-7-2	JC61-00423A	BUSH-6_D	2	SA	
5-7-3	JC81-03520A	GEAR:SUB PADDLE:Z34	2	SA	
5-7-4	/	SHAFT:TRANS:SUB PADDLE	1	SNA	KRDC(SJ10 2406A)
5-8	/	SENSOR:SET	1	SNA	KRDC(SJ10 2118)
5-8-1	0604-001095	PI SENSOR:GP1S73P2	1	SA	
5-8-2	/	ACTUATOR:EJECTOR	1	SNA	KRDC(SJ10 2382)
5-8-3	/	ASSY:M/H:EJECT HOME SNR	1	SNA	KRDC(SJ10 8360B)
5-8-4	JC81-03480A	PHOTO SENSOR:PS119ED1	1	SA	
6	/	MID GUIDE:SET ASSY	1	SNA	KRDC(JR10 2140)
6-1	/	HEXAGON HEADED SCREW:M4×10:T2	2	SNA	KRDC(0450 4010N)
6-2	/	IDLE ROLLER:SET ASSY	2	SNA	KRDC(SJ10 2136)
6-2-1	/	PAN WASHER HEADED SCREW:M3×8:T2	2	SNA	KRDC(JR10 2106)
6-2-2	/	LEAF SPRING:FEED	2	SNA	KRDC(SJ10 2202)

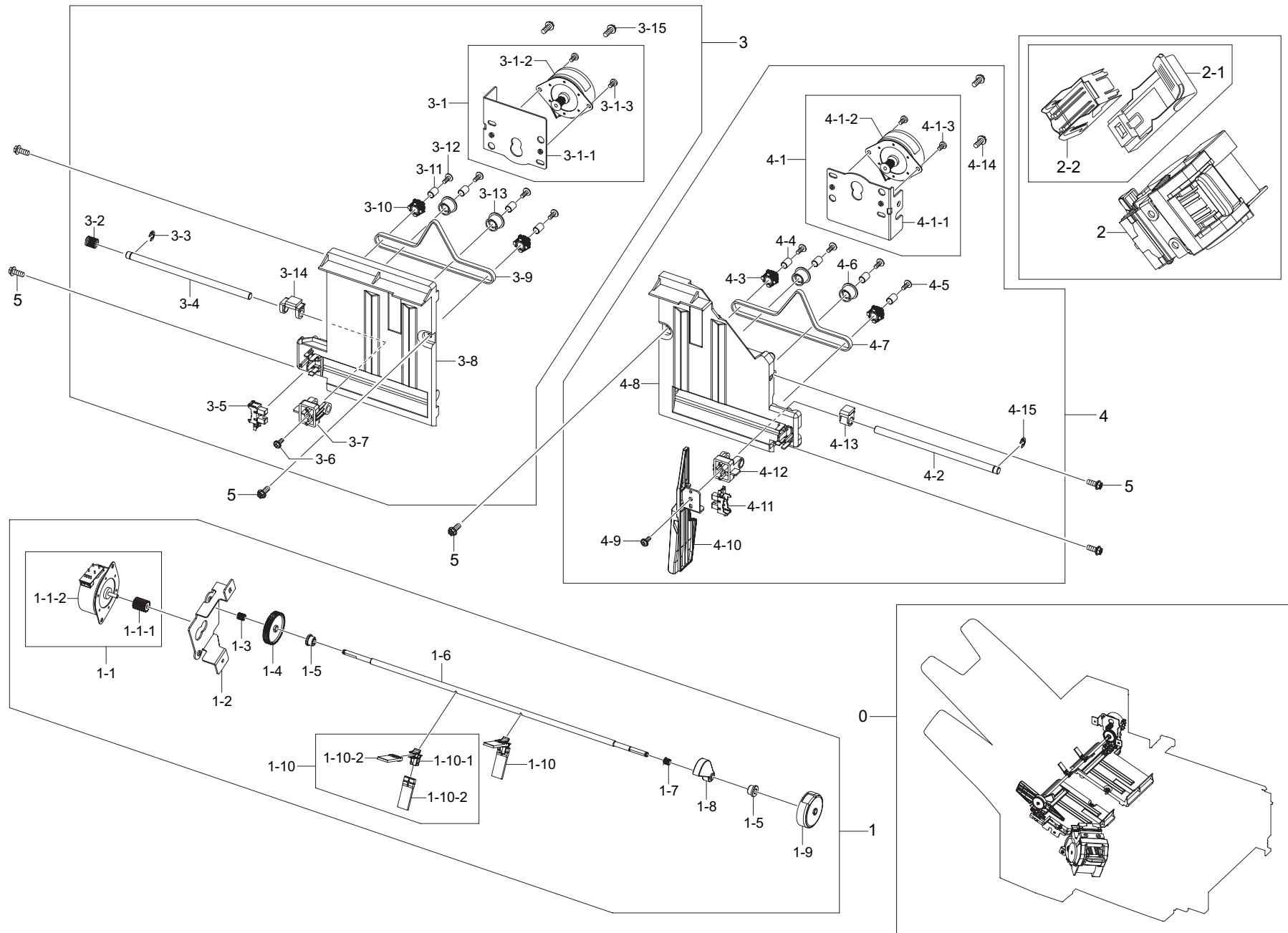
## Feed Unit Parts List

SA : SERVICE AVAILABLE, SNA : SERVICE not AVAILABLE

Drawing#	SEC_Code	Description	QT'y	Service	Remark
6-2-3	/	ROLLER:IDLE:FEED	2	SNA	KRDC(SJ10 2302)
6-3	/	HINGE:GUIDE:FEED	1	SNA	KRDC(JR10 2302A)
6-4	JC81-07247A	AS-MAGNET BY3_32_1	1	SA	
6-5	/	GUIDE:MID_LOWER:FEED	1	SNA	KRDC(JR10 2304A)
6-6	/	LABEL:HANDLE 1d	1	SNA	KRDC(JR10 2798A)
7	/	ENTRANCE GUIDE:SET ASSY	1	SNA	KRDC(SJ10 2120)
7-1	/	ENTRANCE UPPER GUIDE:SET	1	SNA	KRDC(SJ10 2121)
7-1-1	/	HEXAGON HEADED SCREW:M4×10:T2	2	SNA	KRDC(0450 4010N)
7-1-2	/	GUIDE:ENTRANCE:UPPER	1	SNA	KRDC(SJ10 2340)
7-2	/	ENTRANCE LOWER GUIDE:SET	1	SNA	KRDC(SJ10 2122)
7-2-1	/	HEXAGON HEADED SCREW:M4×10:T2	4	SNA	KRDC(0450 4010N)

Drawing#	SEC_Code	Description	QT'y	Service	Remark
7-2-2	/	GUIDE:ENTRANCE:LOWER	1	SNA	KRDC(SJ10 2350)
8	/	BELT TIGHTNER:TOP TRAY:SET	1	SNA	KRDC(JR10 2175)
8-1	/	STUD:TOP TIGHTNER:FEED	1	SNA	KRDC(JR10 2404A)
8-2	/	ROLLER:TIGHTNER	1	SNA	KRDC(SJ10 2312)
9	/	ENT BELT TIGHTNER:SET	1	SNA	KRDC(JR10 2173)
9-1	/	STUD:ENT TIGHTNER:FEED	1	SNA	KRDC(JR10 2402A)
9-2	/	ROLLER:TIGHTNER	1	SNA	KRDC(SJ10 2312)
10	JC81-03514A	B30S2M354:ENT ROLLER	1	SA	
11	JC81-03516A	B30S2M244:EXIT ROLLER	1	SA	
12	JC81-07252A	AS-B30S2M520 ENT ROLLER	1	SA	

# 4. Compile Unit



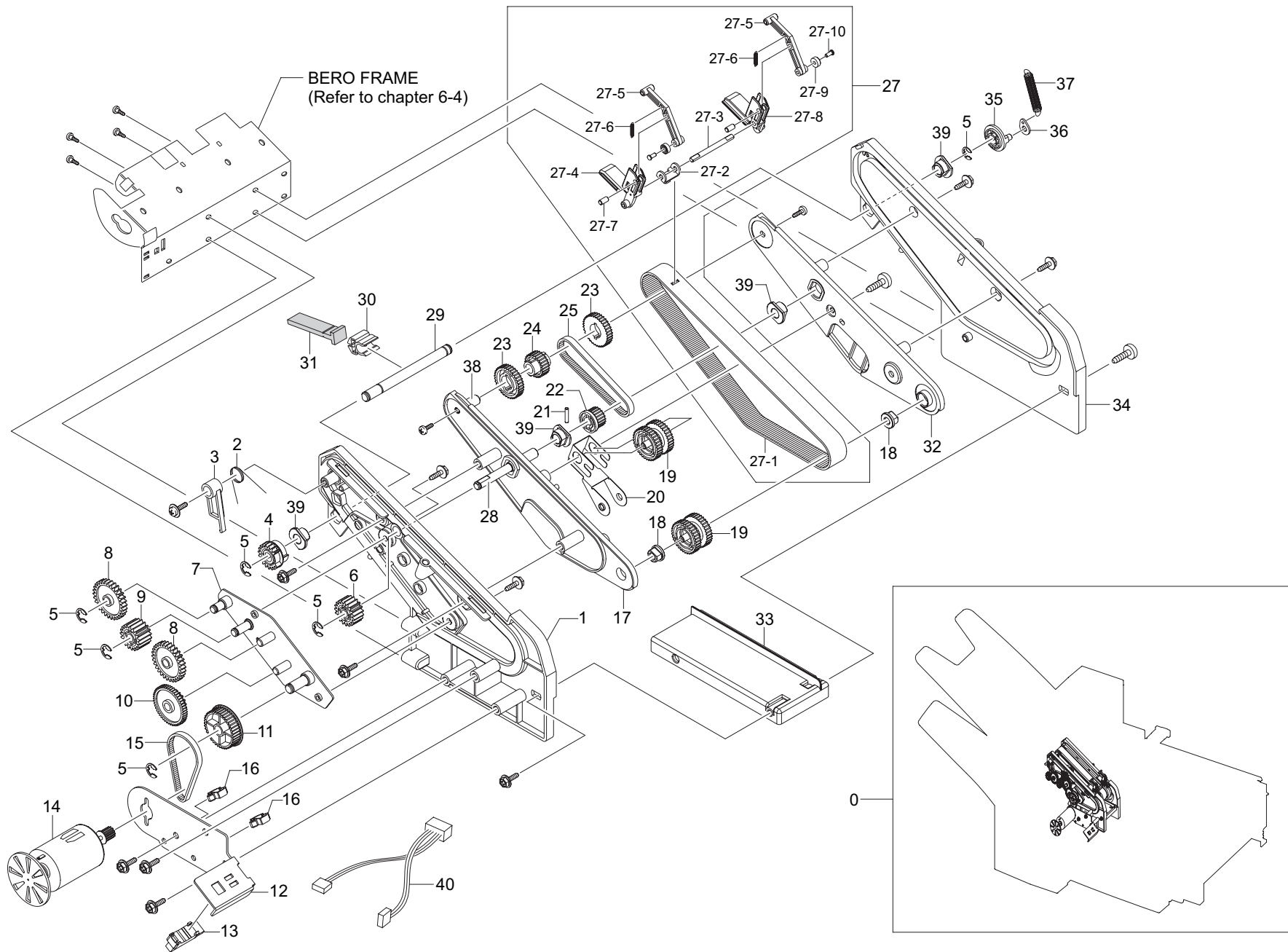
## Compile Unit Parts List

SA : SERVICE AVAILABLE, SNA : SERVICE not AVAILABLE

Drawing#	SEC_Code	Description	QT'y	Service	Remark
0	/	COMPILE UNIT	1	SNA	KRDC(JR10 3000)
1	/	MAIN PADDLE:SET	1	SNA	KRDC(JR10 3130)
1-1	JC81-03473A	AS-ASSY PM MOTOR Z18	1	SA	
1-1-1	/	PM MOTOR:KDL42SCJ620A	1	SNA	KRDC(SB42 1802A)
1-1-2	/	SPUR GEAR:Z18	1	SNA	KRDC(SJ10 5342)
1-2	/	BKT:MOTOR:PADDLE	1	SNA	KRDC(SJ10 3202)
1-3	/	C-SPRING:PADDLE:JR	1	SNA	KRDC(JR10 3504A)
1-4	JC81-03510A	GEAR:Z56:PADDLE	1	SA	
1-5	JC61-00424A	BUSH-4_D	2	SA	
1-6	/	SHAFT:PADDLE MAIN:COMPILE	1	SNA	KRDC(JR10 3402A)
1-7	/	T-SPRING:CAM:JR	1	SNA	KRDC(JR10 3502A)
1-8	/	CAM:SEPARATE:COMPILE	1	SNA	KRDC(JR10 3302A)
1-9	/	ACTUATOR:HOME:PADDLE	1	SNA	KRDC(SJ10 3302A)
1-10	JC81-07255A	AS-PADDLE SUB ASSY	2	SA	
1-10-1	/	PADDLE:HOLDER	2	SNA	KRDC(SJ10 3310)
1-10-2	/	MAIN:PADDLE:JR	4	SNA	KRDC(JR10 3614)
2	JC81-03475A	STAPLER:EH-C590SS	1	SA	
2-1	JC81-03481A	CARTRIDGE:STAPLER:NO.590X	1	SA	
2-2	JC81-03476A	AS-STAPLESREFILLNo.505XW	1	SA	
3	JC81-03507B	REAR JOGGER ASSY:JR	1	SA	
3-1	/	TAMPER MOTOR:SUB ASSY	1	SNA	KRDC(SJ10 3115)
3-1-1	/	BKT:MOTOR:TAMPER	1	SNA	KRDC(SJ10 3206B)
3-1-2	JC81-03486A	ASSY:PM MOTOR:S2M12T	1	SA	
3-1-3	/	BIND HEADED SCREW:M3×6:PC	2	SNA	KRDC(0353 0060N)
3-2	/	C-SPRING:TAMPER	1	SNA	KRDC(SJ10 3682)
3-3	/	E-RING:Φ4	1	SNA	KRDC(1720 0040G)
3-4	/	LM SHAFT:TAMPER	1	SNA	KRDC(SJ10 3404A)
3-5	0604-001095	PI SENSOR:GP1S73P2	1	SA	
3-6	/	PAN WASHER HEADED SCREW:M3×8:T2	4	SNA	KRDC(0965 3008N)
3-7	/	LM BUSH:TAMPER	1	SNA	KRDC(SJ10 3318)

Drawing#	SEC_Code	Description	QT'y	Service	Remark
3-8	/	FRAME:COMPILE:REAR:JR	1	SNA	KRDC(JR10 3306A)
3-9	JC81-03509A	B40S2M290:TAMPER	1	SA	
3-10	JC81-03508A	TIMING PULLEY:T20:TAMPER	2	SA	
3-11	/	HOLLOW SHAFT:D_6	4	SNA	KRDC(SJ10 3402B)
3-12	/	PAN WASHER HEADED SCREW:M3×8:T2	4	SNA	KRDC(0965 3008N)
3-13	/	ROLLER:TAMPER	2	SNA	KRDC(SJ10 3306)
3-14	/	HOLDER:BELT:TAMPER:REAR	1	SNA	KRDC(SJ10 3316)
3-15	/	HEXAGON HEADED SCREW:M4×10:T2	3	SNA	KRDC(0450 4010N)
4	JC81-03511B	FRONT JOGGER ASSY:JR	1	SA	
4-1	/	TAMPER MOTOR:SUB ASSY	1	SNA	KRDC(SJ10 3115)
4-1-1	/	BKT:MOTOR:TAMPER	1	SNA	KRDC(SJ10 3206B)
4-1-2	JC81-03486A	ASSY:PM MOTOR:S2M12T	1	SA	
4-1-3	/	BIND HEADED SCREW:M3×6:PC	2	SNA	KRDC(0353 0060N)
4-2	/	LM SHAFT:TAMPER	1	SNA	KRDC(SJ10 3404A)
4-3	JC81-03508A	TIMING PULLEY:T20:TAMPER	2	SA	
4-4	/	HOLLOW SHAFT:D_6	4	SNA	KRDC(SJ10 3402B)
4-5	/	PAN WASHER HEADED SCREW:M3×8:T2	4	SNA	KRDC(0965 3008N)
4-6	/	ROLLER:TAMPER	2	SNA	KRDC(SJ10 3306)
4-7	JC81-03509A	B40S2M290:TAMPER	1	SA	
4-8	/	FRAME:COMPILE:FRONT:JR	1	SNA	KRDC(JR10 3304A)
4-9	/	PAN WASHER HEADED SCREW:M3×8:T2	1	SNA	KRDC(0965 3008N)
4-10	/	SIDE FENCE:TAMPER:FRONT	1	SNA	KRDC(SJ10 3350)
4-11	0604-001095	PI SENSOR:GP1S73P2	1	SA	
4-12	/	LM BUSH:TAMPER	1	SNA	KRDC(SJ10 3318)
4-13	/	HOLDER:BELT:TAMPER:FRONT	1	SNA	KRDC(SJ10 3314)
4-14	/	HEXAGON HEADED SCREW:M4×10:T2	2	SNA	KRDC(0450 4010N)
4-15	/	E-RING:Φ4	1	SNA	KRDC(1720 0040G)
5	/	HEXAGON HEADED SCREW:M4×10:T2	6	SNA	KRDC(0450 4010N)

# 5. Ejector Unit



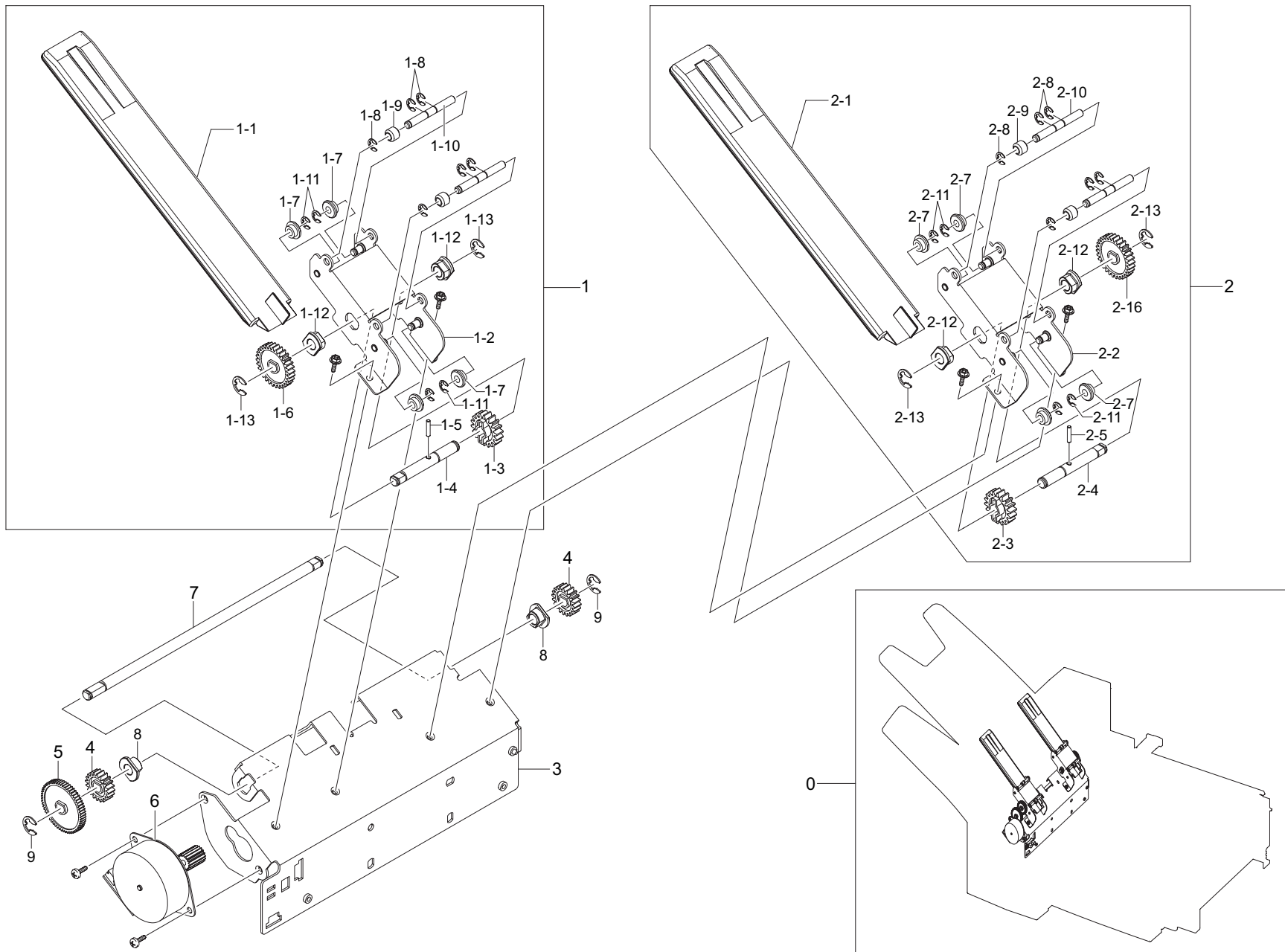
## EjectorUnit Parts List

SA : SERVICE AVAILABLE, SNA : SERVICE not AVAILABLE

Drawing#	SEC_Code	Description	QT'y	Service	Remark
0	JC81-03773A	EJECT UNIT	1	SA	
1	/	EJECT FRAME:FRONT:SET	1	SNA	KRDC(SJ10 4131)
2	/	T-SPRING:LATCH:SCU	1	SNA	KRDC(SJ10 4686)
3	/	HOOK:CAM:EJECT	1	SNA	KRDC(SJ10 4316)
4	JC81-03526A	GEAR:CAM:SCU	1	SA	
5	/	E-RING:Φ4	8	SNA	KRDC(1720 0040G)
6	JC81-03495A	SPUR GEAR:Z19:D-CUT:EJECT	1	SA	
7	/	ASSY:BKT:DRIVING:EJECT	1	SNA	KRDC(SJ10 4206A)
8	JC81-03504A	SPUR GEAR:Z30	2	SA	
9	JC81-03503A	SPUR GEAR:Z19:SCU	1	SA	
10	JC81-03502A	GEAR:M08Z19M05Z50:EJECT	1	SA	
11	JC81-03501A	GEAR-PULLEY:S2MT40M05T24:EJECT	1	SA	
12	/	BKT:DC MOTOR:EJECT	1	SNA	KRDC(SJ10 4204B)
13	0604-001095	PI SENSOR:GP1S73P2	2	SA	
14	JC81-03474A	MOTOR EJECT	1	SA	
15	JC81-03500A	B30S2M118:EJECT:MOTOR	1	SA	
16	/	MICRO WIRE SADDLE	2	SNA	KRDC(1105 0232)
17	/	FRAME:BELT:EJECT:FRONT	1	SNA	KRDC(SJ10 4352A)
18	JC61-00424A	BUSH-4_D	4	SA	
19	JC81-03499A	PULLEY:S2M34T:EJECT	2	SA	
20	/	PLATE SPRING:TIGHTNER:EJECT	1	SNA	KRDC(SJ10 4212)
21	/	PARALLEL PIN:Φ2×10	1	SNA	KRDC(P632 0100G)
22	JC81-03498A	PULLEY:S2M20T:EJECT	1	SA	
23	JC81-03497A	PULLEY:DRIVE S2M34T:EJECT	2	SA	
24	JC81-03496A	PULLEY:S2M25T:EJECT	1	SA	

Drawing#	SEC_Code	Description	QT'y	Service	Remark
25	JC81-03513A	B30S2M144:EJECT:LINK	1	SA	
27	JC81-03772A	EJECT BELT:SUB ASSY	1	SA	
27-1	JC81-03512A	ASSY:BELT:EJECT	1	SA	
27-2	/	HOLDER:BELT:EJECT	1	SNA	KRDC(SJ10 4214A)
27-3	/	SHAFT D-CUT:GRIP HINGE:EJECT	1	SNA	KRDC(SJ10 4418B)
27-4	/	GRIP BASE:FRONT:EJECT	1	SNA	KRDC(SJ10 4334)
27-5	/	GRIP LINK:EJECT	1	SNA	KRDC(SJ10 4338C)
27-6	/	E-SPRING:GRIP	1	SNA	KRDC(SJ10 4682A)
27-7	/	PIN:ROLLER:EJECT	2	SNA	KRDC(SJ10 4420B)
27-8	/	GRIP BASE:REAR:EJECT	1	SNA	KRDC(SJ10 4336)
27-9	/	ROLLER:GRIP:EJECT	2	SNA	KRDC(SJ10 4342)
27-10	/	PIN:ROLLER:EJECT	2	SNA	KRDC(SJ10 4420B)
28	/	SHAFT:BELT TRANS:EJECT	1	SNA	KRDC(SJ10 4410B)
29	/	SHAFT:SCU	1	SNA	KRDC(SJ10 4412)
30	/	HOLDER:SCU	1	SNA	KRDC(SJ10 4364)
31	/	PADDLE:SCU	1	SNA	KRDC(SJ10 4702)
32	/	FRAME:BELT:EJECT:REAR	1	SNA	KRDC(SJ10 4354A)
33	/	FRAME:RETURN:EJECT	1	SNA	KRDC(SJ10 4302)
34	/	FRAME:REAR:EJECT	1	SNA	KRDC(SJ10 4322C)
35	/	ROTATOR:CAM:SCU	1	SNA	KRDC(SJ10 4318)
36	/	HOOK:SPRING:SCU	1	SNA	KRDC(SJ10 4210A)
37	/	E-SPRING:CLUTCH:SCU	1	SNA	KRDC(SJ10 4684)
38	/	SHAFT:BELT PULLEY:EJECT	1	SNA	KRDC(SJ10 4414A)
39	JC61-00423A	BUSH-6_D	4	SA	
40	/	ASSY:M/H:EXT TRAY HOME SNR	1	SNA	KRDC(SJ10 8380A)

# 6. Extension Tray Unit



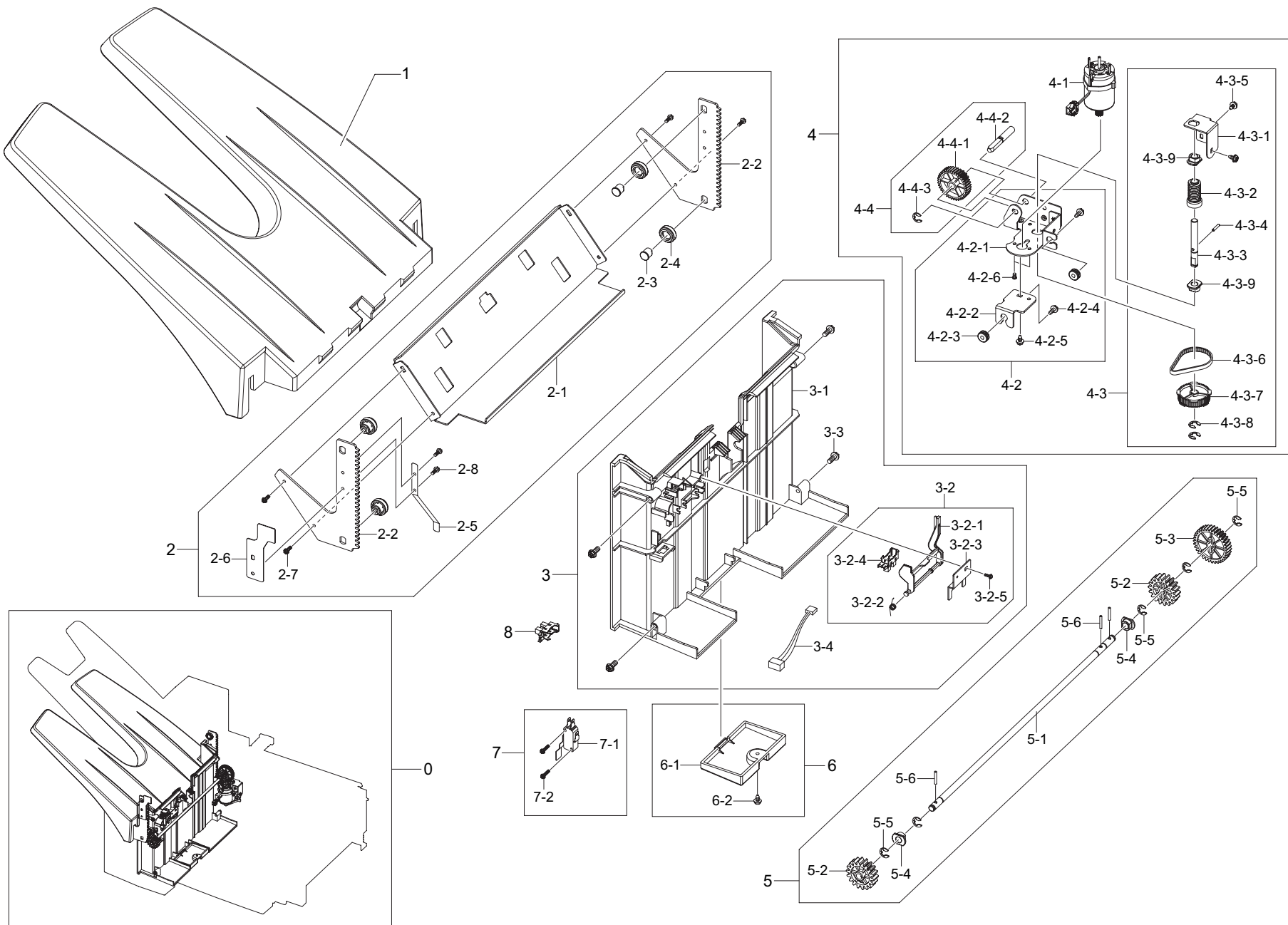
## Extension Tray Unit Parts List

SA : SERVICE AVAILABLE, SNA : SERVICE not AVAILABLE

Drawing#	SEC_Code	Description	QT'y	Service	Remark
0	/	EXTENTION TRAY UNIT	1	SNA	KRDC(JR10 5000)
1	JC81-03769B	SPT FINGER ASSY:FRONT	1	SA	
1-1	JC81-03483B	TRAY:BERO	1	SA	
1-2	/	BKT:TRAY:BERO:ASSY	1	SNA	KRDC(SJ10 5202A)
1-3	JC81-03494A	RACK PINION:Z18	1	SA	
1-4	/	SHAFT:RACK PINION	1	SNA	KRDC(SJ10 5412A)
1-5	/	PARALLEL PIN:Φ2×10	1	SNA	KRDC(P632 0100G)
1-6	JC81-03521A	GEAR:Z30	1	SA	
1-7	/	ROLLER:BERO:LOWER	4	SNA	KRDC(SJ10 5304)
1-8	/	E-RING:Φ2.5	6	SNA	KRDC(1720 0025G)
1-9	/	ROLLER:BERO:UPPER	2	SNA	KRDC(SJ10 5302)
1-10	/	SHAFT:ROLLER:BERO	2	SNA	KRDC(SJ10 5402A)
1-11	/	E-RING:Φ3	4	SNA	KRDC(1720 0030G)
1-12	JC61-00423A	BUSH-6_D	2	SA	
1-13	/	E-RING:Φ4	4	SNA	KRDC(1720 0040G)
2	JC81-03770B	SPT FINGER ASSY:REAR	1	SA	
2-1	JC81-03483B	TRAY:BERO	1	SA	
2-2	/	BKT:TRAY:BERO:ASSY	1	SNA	KRDC(SJ10 5202A)

Drawing#	SEC_Code	Description	QT'y	Service	Remark
2-3	JC81-03494A	RACK PINION:Z18	1	SA	
2-4	/	SHAFT:RACK PINION	1	SNA	KRDC(SJ10 5412A)
2-5	/	PARALLEL PIN:Φ2×10	1	SNA	KRDC(P632 0100G)
2-6	JC81-03521A	GEAR:Z30	1	SA	
2-7	/	ROLLER:BERO:LOWER	4	SNA	KRDC(SJ10 5304)
2-8	/	E-RING:Φ2.5	6	SNA	KRDC(1720 0025G)
2-9	/	ROLLER:BERO:UPPER	2	SNA	KRDC(SJ10 5302)
2-10	/	SHAFT:ROLLER:BERO	2	SNA	KRDC(SJ10 5402A)
2-11	/	E-RING:Φ3	4	SNA	KRDC(1720 0030G)
2-12	JC61-00423A	BUSH-6_D	2	SA	
2-13	/	E-RING:Φ4	4	SNA	KRDC(1720 0040G)
3	/	BERO FRAME:SUB ASSY	1	SNA	KRDC(SJ10 5120)
4	JC81-03493A	GEAR:Z20	2	SA	
5	JC81-03522A	GEAR:Z60	1	SA	
6	JC81-03478A	AS-ASSY PM MOTOR Z18	1	SA	
7	/	SHAFT:TRANS:BERO	1	SNA	KRDC(SJ10 5416)
8	JC61-00423A	BUSH-6_D	2	SA	
9	/	E-RING:Φ4	4	SNA	KRDC(1720 0040G)

# 7. Stacker Unit



## Stacker Unit Parts List

SA : SERVICE AVAILABLE, SNA : SERVICE not AVAILABLE

Drawing#	SEC_Code	Description	QT'y	Service	Remark
0	/	STACKER UNIT	1	SNA	KRDC(JR10 6000)
1	JC81-03472B	TRAY:STACKER	1	SA	
2	/	STACKER:SET	1	SNA	KRDC(JR10 6140)
2-1	/	STAY:STACKER	1	SNA	KRDC(SJ10 6202A)
2-2	/	SIDE FRAME:STACKER	2	SNA	KRDC(SJ10 6208A)
2-3	/	STUD:STACKER:LIFT	4	SNA	KRDC(SJ10 6408A)
2-4	/	ROLLER:STACKER	4	SNA	KRDC(SJ10 6302)
2-5	/	LEAF SPRING:EARTH	1	SNA	KRDC(SJ10 1279)
2-6	/	BKT:FULL SENSOR:STACKER	1	SNA	KRDC(JR10 6210A)
2-7	/	HEXAGON HEADED SCREW:M3×6:T3	4	SNA	KRDC(0451 3006N)
2-8	/	HEXAGON HEADED SCREW:M4×6:PC	4	SNA	KRDC(0360 4006N)
3	/	SHIELD:SET	1	SNA	KRDC(SJ10 6130)
3-1	/	SHIELD:STACKER	1	SNA	KRDC(SJ10 6340B)
3-2	/	STACKER ACTUATOR:SET	1	SNA	KRDC(SJ10 6132)
3-2-1	/	ACTUATOR:STACKER	1	SNA	KRDC(SJ10 6332A)
3-2-2	/	T-SPRING:ACTUATOR:STACK	1	SNA	KRDC(SJ10 6682A)
3-2-3	/	BKT:SENSOR	1	SNA	KRDC(SJ10 6214A)
3-2-4	0604-001095	PI SENSOR:GP1S73P2	1	SA	
3-2-5	/	PAN WASHER HEADED SCREW:M3×8:T2	1	SNA	KRDC(0965 3008N)
3-3	/	HEXAGON HEADED SCREW:M4×10:T2	4	SNA	KRDC(0450 4010N)
3-4	/	ASSY:M/H:STK TOP SNR	1	SNA	KRDC(SJ10 8370A)
4	/	STACKER MOTOR:SET	1	SNA	KRDC(SJ10 6110)
4-1	JC81-03484A	DC MOTOR:2738:S2M12T	1	SA	
4-2	/	MOTOR BKT:SUB ASSY	1	SNA	KRDC(SJ10 6111)
4-2-1	/	BKT:MOTOR:STACKER	1	SNA	KRDC(SJ10 6206B)
4-2-2	/	BKT:SUPPORT:MORTOR	1	SNA	KRDC(SJ10 6212B)

Drawing#	SEC_Code	Description	QT'y	Service	Remark
4-2-3	/	DAMPER WASHER	2	SNA	KRDC(SJ10 6602A)
4-2-4	/	HEXAGON HEADED SCREW:M3×8:T3	2	SNA	KRDC(0451 3008N)
4-2-5	/	HEXAGON HEADED SCREW:M3×6:T3	1	SNA	KRDC(0451 3006N)
4-2-6	/	PAN HEADED SCREW:M2.6×4:PC	2	SNA	KRDC(0312 6040N)
4-3	/	WORM:SUB ASSY	1	SNA	KRDC(SJ10 6114)
4-3-1	/	BKT:WORM:STACK	1	SNA	KRDC(SJ10 6204B)
4-3-2	JC81-03489A	WORM:STACKER	1	SA	
4-3-3	/	SHAFT:WORM	1	SNA	KRDC(SJ10 6414B)
4-3-4	/	PARALLEL PIN:Φ2×10	1	SNA	KRDC(P632 0100G)
4-3-5	/	HEXAGON HEADED SCREW:M3×6:T3	2	SNA	KRDC(0451 3006N)
4-3-6	JC81-03525A	B40S2M120:STACKER	1	SA	
4-3-7	JC81-03491A	TIMING PULLEY:S2M48T	1	SA	
4-3-8	/	E-RING:Φ4	2	SNA	KRDC(1720 0040G)
4-3-9	JC61-00423A	BUSH-6_D	2	SA	
4-4	/	WORM WHEEL:SET	1	SNA	KRDC(SJ10 6115)
4-4-1	JC81-03524A	WORM WHEEL:STACKER	1	SA	
4-4-2	/	SHAFT:WORM WHEEL	1	SNA	KRDC(SJ10 6416C)
4-4-3	/	E-RING:Φ4	2	SNA	KRDC(1720 0040G)
5	/	RACK PINION:SET	1	SNA	KRDC(SJ10 6120)
5-1	/	SHAFT:STACKER:DRIVE	1	SNA	KRDC(SJ10 6418A)
5-2	JC81-03492A	PINION GEAR:18T	2	SA	
5-3	JC81-03523A	SPUR GEAR:Z35	1	SA	
5-4	JC61-00423A	BUSH-6_D	2	SA	
5-5	/	E-RING:Φ4	5	SNA	KRDC(1720 0040G)
5-6	/	PARALLEL PIN:Φ2×14	3	SNA	KRDC(P632 0140G)
6	/	PCB COVER:SET	1	SNA	KRDC(SJ10 6160)
6-1	/	COVER:PCB	1	SNA	KRDC(SJ10 6370)

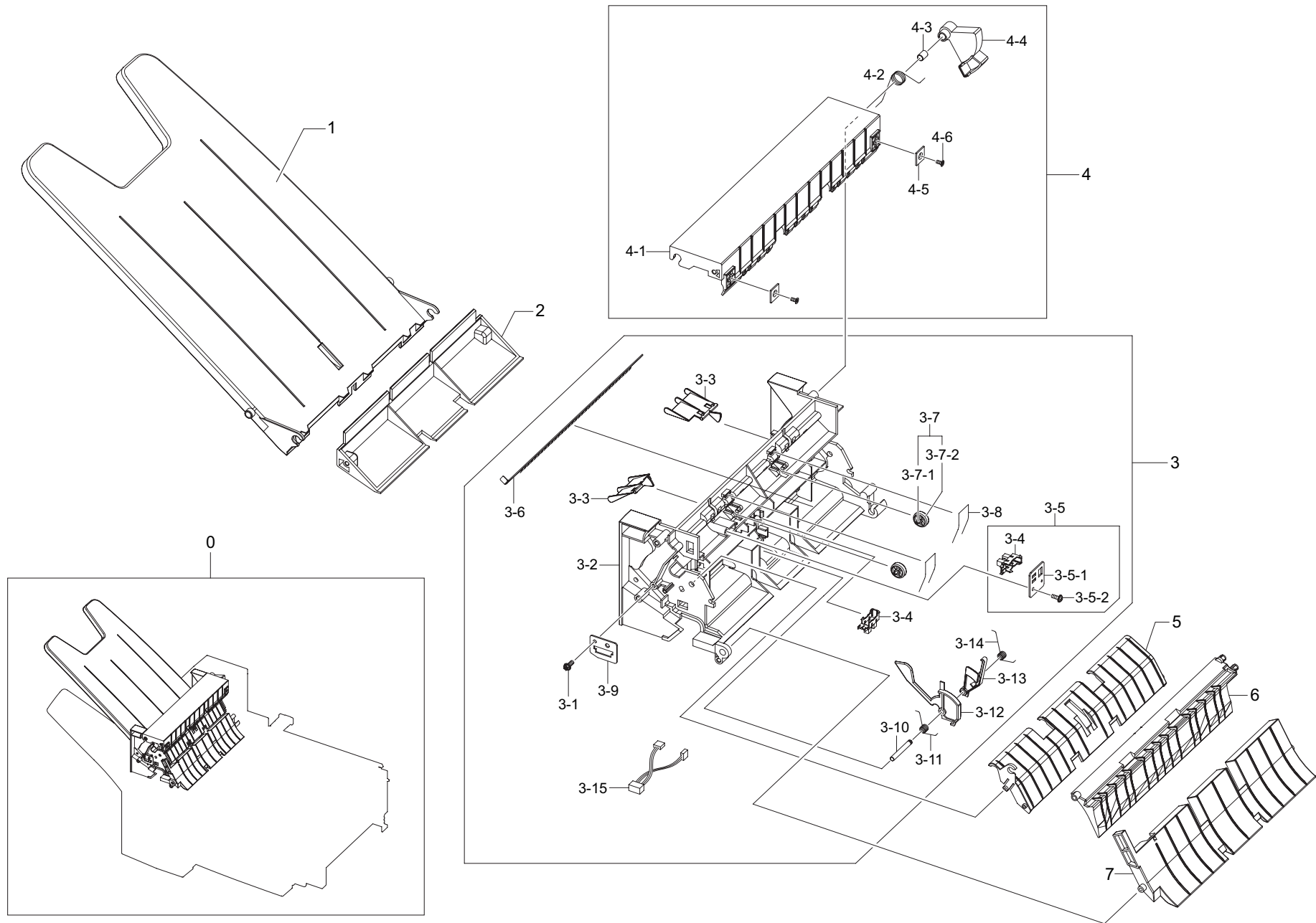
## Stacker Unit Parts List

SA : SERVICE AVAILABLE, SNA : SERVICE not AVAILABLE

Drawing#	SEC_Code	Description	QT'y	Service	Remark
6-2	/	HEXAGON HEADED SCREW:M3×6:T3	1	SNA	KRDC(0451 3006N)
7	/	LOWER LIMIT SWITCH:SET	1	SNA	KRDC(JR10 6150)
7-1	JC81-03469A	MICRO SWITCH:VP333A-0D	1	SA	

Drawing#	SEC_Code	Description	QT'y	Service	Remark
7-2	/	HEXAGON HEADED SCREW:M3×14:PC	2	SNA	KRDC(0360 3014N)
8	0604-001095	PI SENSOR:GP1S73P2	1	SA	

# 8. Top tray unit



## Top tray unit Parts List

SA : SERVICE AVAILABLE, SNA : SERVICE not AVAILABLE

Drawing#	SEC_Code	Description	QT'y	Service	Remark
0	/	TOP TRAY UNIT	1	SNA	KRDC(JR10 7000)
1	JC81-07262A	AS-TRAY STACKER	1	SA	
2	/	STAY UPPER:SAFETY:JR	1	SNA	KRDC(JR10 7326A)
3	/	TOP TRAY FRAME:ASSY	1	SNA	KRDC(JR10 7100)
3-1	/	HEXAGON HEADED SCREW:M4×10:T2	6	SNA	KRDC(0450 4010N)
3-2	/	FRAME:GUIDE:TOP TRAY	1	SNA	KRDC(JR10 7308A)
3-3	JC81-07253A	AS-ACTUATOR FULL STACKER	2	SA	
3-4	0604-001095	PI SENSOR:GP1S73P2	2	SA	
3-5	/	BKT:SENSOR:STACKER:SUB ASSY:SET	1	SNA	KRDC(JR10 7116)
3-5-1	JC81-07270A	AS-BKT SENSOR STACKER	1	SA	
3-5-2	/	PAN WASHER HEADED SCREW:M3×8:T2	1	SNA	KRDC(0965 3008N)
3-6	JC81-04632A	AS-ANTI_STATIC BRUSH	1	SA	
3-7	JC81-07268A	AS-ROLLER IDLE FEED ASSY	2	SA	
3-7-1	/	PARALLEL PIN:Φ2×14	2	SNA	KRDC(P632 0140G)
3-7-2	/	ROLLER:IDLE:FEED	2	SNA	KRDC(SJMB 2306A)
3-8	JC81-07272A	AS-T_SPRING GUIDE M/B	2	SA	
3-9	/	BKT:HARNESS:TOP TRAY	1	SNA	KRDC(JR10 7202A)
3-10	/	SHAFT:ACTUATOR:STACKER	1	SNA	KRDC(SJMB 2402A)
3-11	/	TORSION SPRING:TRAY EMPTY	1	SNA	KRDC(SJMB 2502A)

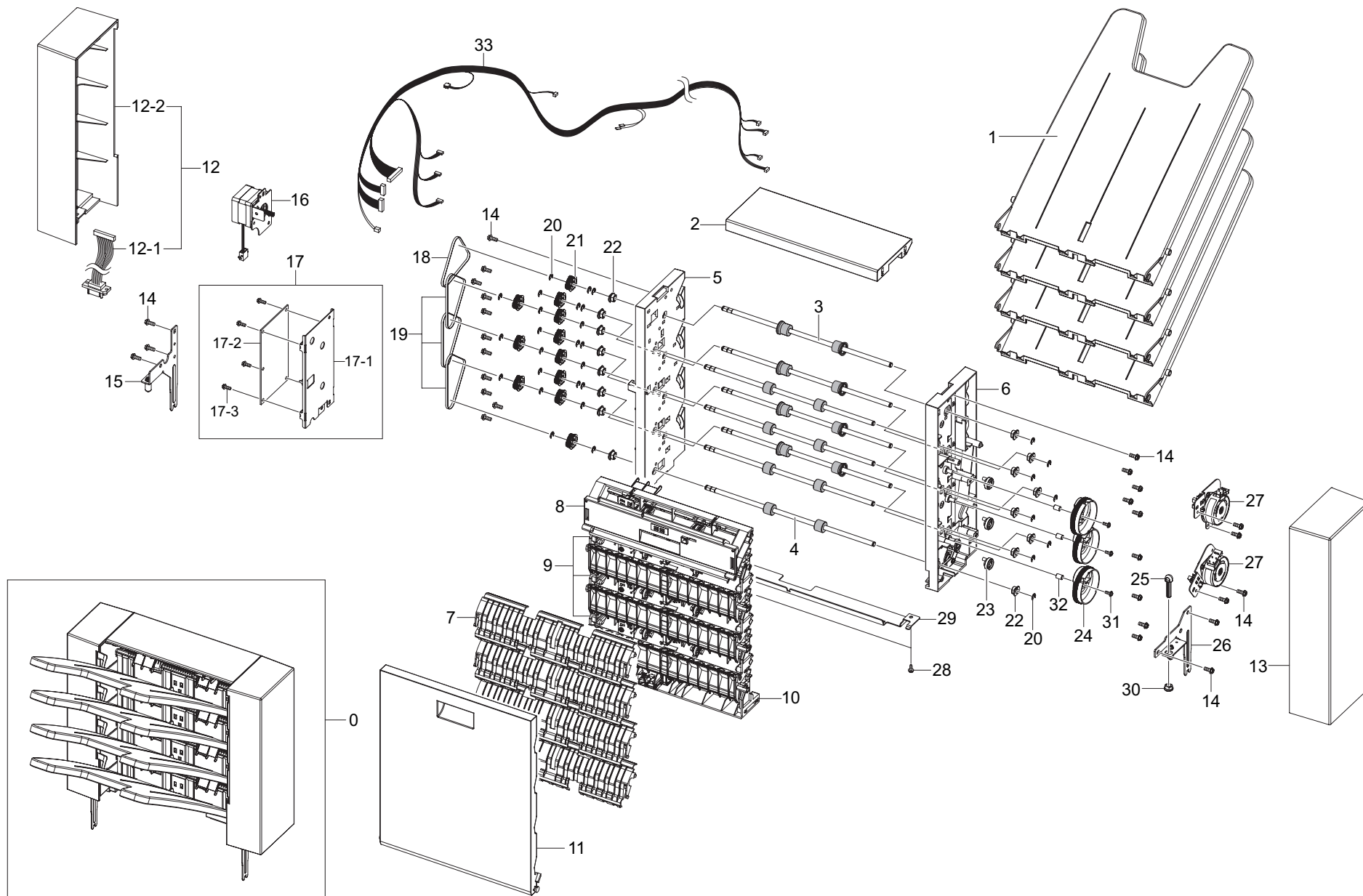
Drawing#	SEC_Code	Description	QT'y	Service	Remark
3-12	/	ACTUATOR:EMPTY:STACKER	1	SNA	KRDC(SJMB 2310A)
3-13	/	ACTUATOR:EXIT:FEED	1	SNA	KRDC(SJMB 2312A)
3-14	/	TORSION SPRING:PAPER PATH	1	SNA	KRDC(SJMB 2504A)
3-15	/	ASSY:M/H:TOP TRAY SNR	1	SNA	KRDC(JR10 8340A)
4	/	GUIDE:EXIT:TOP TRAY:SET ASSY	1	SNA	KRDC(JR10 7200)
4-1	/	GUIDE:EXIT:TOP TRAY	1	SNA	KRDC(JR10 7302A)
4-2	/	TORSION SPRING:DIVERTER:TOP	1	SNA	KRDC(JR10 7502A)
4-3	/	HOLLOW SHAFT:D_6	1	SNA	KRDC(SJ10 3402B)
4-4	/	ACTUATOR:DIVERTER:TOP TRAY	1	SNA	KRDC(JR10 7324A)
4-5	/	MAGNET CATCH PLATE:TB	2	SNA	KRDC(CF10 T209)
4-6	/	COUNTERSINK SCREW:M3×10:T2	2	SNA	KRDC(0323 0102N)
5	/	GUIDE:LOWER:TOP TRAY	1	SNA	KRDC(JR10 7304A)
6	/	SEPARATE:PAWL:TOP TRAY	1	SNA	KRDC(JR10 7306A)
7	/	SEPARATE:PAWL COMPILE:TOP:SUB ASSY	1	SNA	KRDC(JR10 7119)
7	/	SHAFT:TRANS:BERO	1	SNA	KRDC(SJ10 5416)
8	JC61-00423A	BUSH-6_D	2	SA	
9	/	E-RING:Φ4	4	SNA	KRDC(1720 0040G)

# Mail Box

## *Contents*

1. MAIN .....	2
2. AS-SHIELD TOP STKR ASSY .....	4
3. AS-ACTUATOR SHIELD ASSY .....	6
4. AS-BASE SUB ASSY .....	8
5. AS-COVER JAM FRAME ASSY .....	10

# 1. MAIN



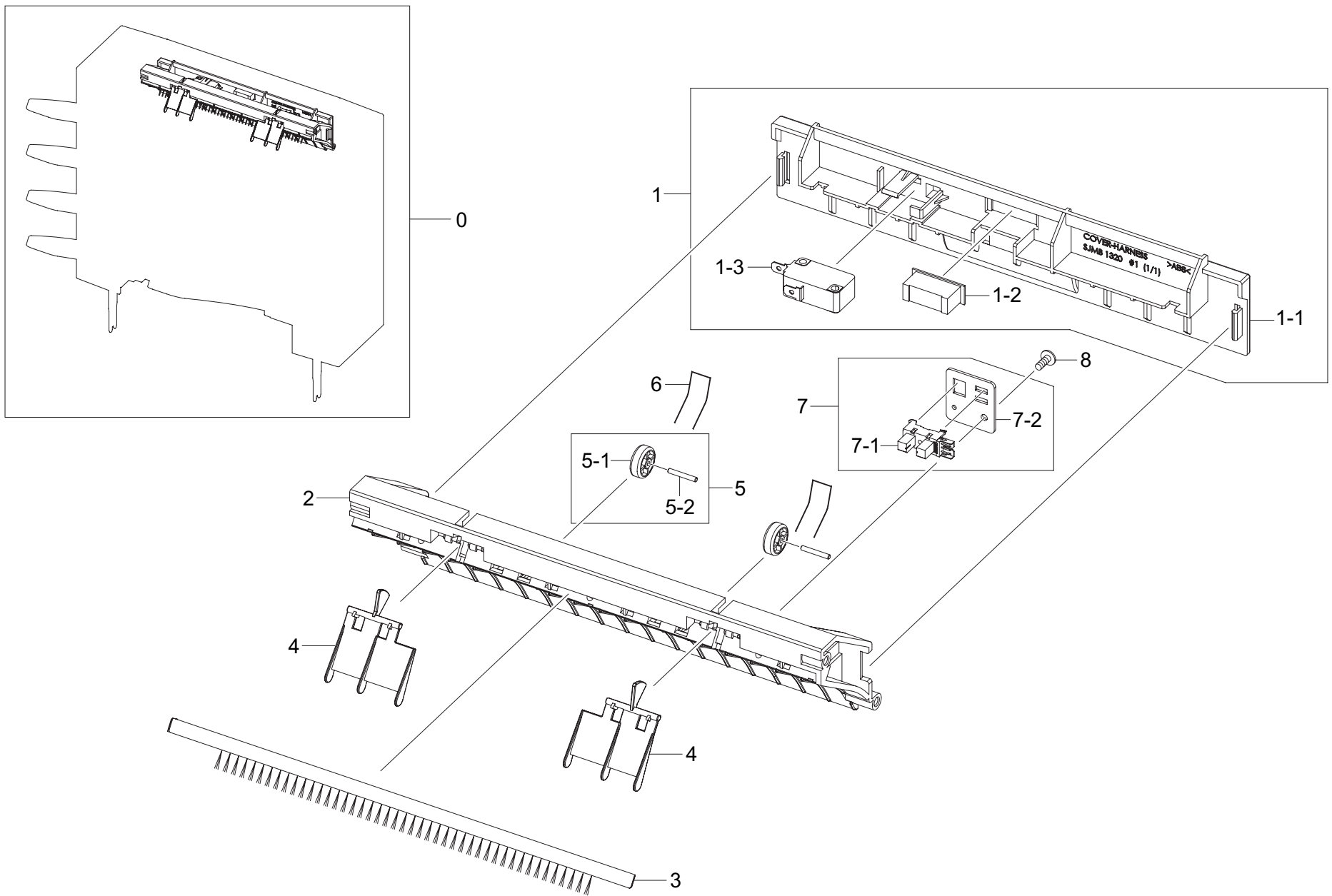
## MAIN Parts List

SA : SERVICE AVAILABLE, SNA : SERVICE not AVAILABLE

Drawing#	SEC_Code	Description	QT'y	Service	Remark
0	SCX-MBT20S	Mail box	1	SA	
1	JC81-07262A	AS-TRAY STACKER	4	SA	KRDC(SJMB 2308A)
2	JC81-07285A	AS-COVER TOP FRAME	1	SA	KRDC(SJMB 1306A)
3	JC81-07286A	AS-ROLLER EXIT FEED	4	SA	KRDC(SJMB 2602A)
4	JC81-07287A	AS-ROLLER MAIN FEED	4	SA	KRDC(SJMB 2604A)
5	JC81-07275A	FRAME:FRONT:SUB ASSY	1	SA	KRDC(SJMB 1120)
6	JC81-07276A	FRAME:REAR:SUB ASSY	1	SA	KRDC(SJMB 1130)
7	JC81-07261A	AS-GUIDE FEED	4	SA	KRDC(SJMB 2304A)
8	JC81-07267A	AS-SHIELD TOP STKR ASSY	1	SA	KRDC(SJMB 1118)
9	JC81-07265A	AS-ACTUATOR SHIELD ASSY	3	SA	KRDC(SJMB 1113)
10	JC81-07264A	AS-BASE SUB ASSY	1	SA	KRDC(SJMB 1110)
11	JC81-07282A	AS-COVER JAM FRAME ASSY	1	SA	KRDC(SJMB 1150)
12	JC81-07283A	AS-COVER FRONT FRAME ASSY	1	SA	KRDC(SJMB 1154)
12-1	-	ASSY, MH, INTERFACE	1	SNA	KRDC(SJMB 8330)
12-2	JC81-07284A	AS-COVER DRAW CN FRAME	1	SA	KRDC(SJMB 1304A)
13	JC81-07260A	AS-COVER REAR FRAME	1	SA	KRDC(SJMB 1318A)
14	-	HEXAGON HEADED SCREW:M4×10:T2	47	SNA	KRDC(0450 4010N)
15	JC81-07279A	JOINT BKT:FRONT:FRAME:SUB ASSY	1	SA	KRDC(SJMB 1142)
16	JC81-07281A	HB MOTOR:FEED:SUB ASSY	1	SA	KRDC(SJMB 1146)
17	-	MAIN BOARD:FRAME:SUB ASSY	1	SNA	KRDC(SJMB 1134)
17-1	-	BKT:MAIN BOARD:FRAME	1	SNA	KRDC(SJMB 1206)

Drawing#	SEC_Code	Description	QT'y	Service	Remark
17-2	JC81-07277A	AS-PCB ASSY MAIN	1	SA	KRDC(SJMB 8200B)
17-3	-	HEXAGON HEADED SCREW:M3×6:T3	4	SNA	KRDC(0451 3006N)
18	JC81-07256A	AS-BELT B30S2M200	1	SA	KRDC(B30S2M200)
19	JC81-07257A	AS-BELT B30S2M210	3	SA	KRDC(B30S2M210)
20	-	E-RING:Φ4	29	SNA	KRDC(1720 0040G)
21	JC81-03517A	TIMING PULLEY:T30S2M:D-CUT	11	SA	-
22	JC61-00423A	BUSH-6_D	16	SA	-
23	JC81-07289A	ROLLER:STACKER	4	SA	KRDC(SJ10 6302)
24	JC81-07263A	AS-SPUR GEAR M05Z100	3	SA	KRDC(SJMB 2318A)
25	JC81-07259A	AS-POSITIONER SEPARATE	1	SA	KRDC(SJMB 1314A)
26	JC81-07278A	JOINT BKT:REAR:FRAME:SUB ASSY	1	SA	KRDC(SJMB 1140)
27	JC81-07280A	SEPARATE MOTOR:SUB ASSY	2	SA	KRDC(SJMB 1144)
28	-	HEXAGON HEADED SCREW:M3×8:T3	2	SNA	KRDC(0451 3008N)
29	JC81-07258A	AS-BKT EARTH FRAME	1	SA	KRDC(SJMB 1212A)
30	-	BEARING:Φ6	1	SNA	KRDC(0092 0601)
31	-	PAN WASHER HEADED SCREW:M3×8:T2	1	SNA	KRDC(0965 3008N)
32	JC81-07288A	HOLLOW SHAFT:D_6	3	SA	KRDC(SJ10 3402)
33	-	ASSY, MH,FRAME	1	SNA	KRDC(SJMB 8310)

## 2. AS-SHIELD TOP STKR ASSY



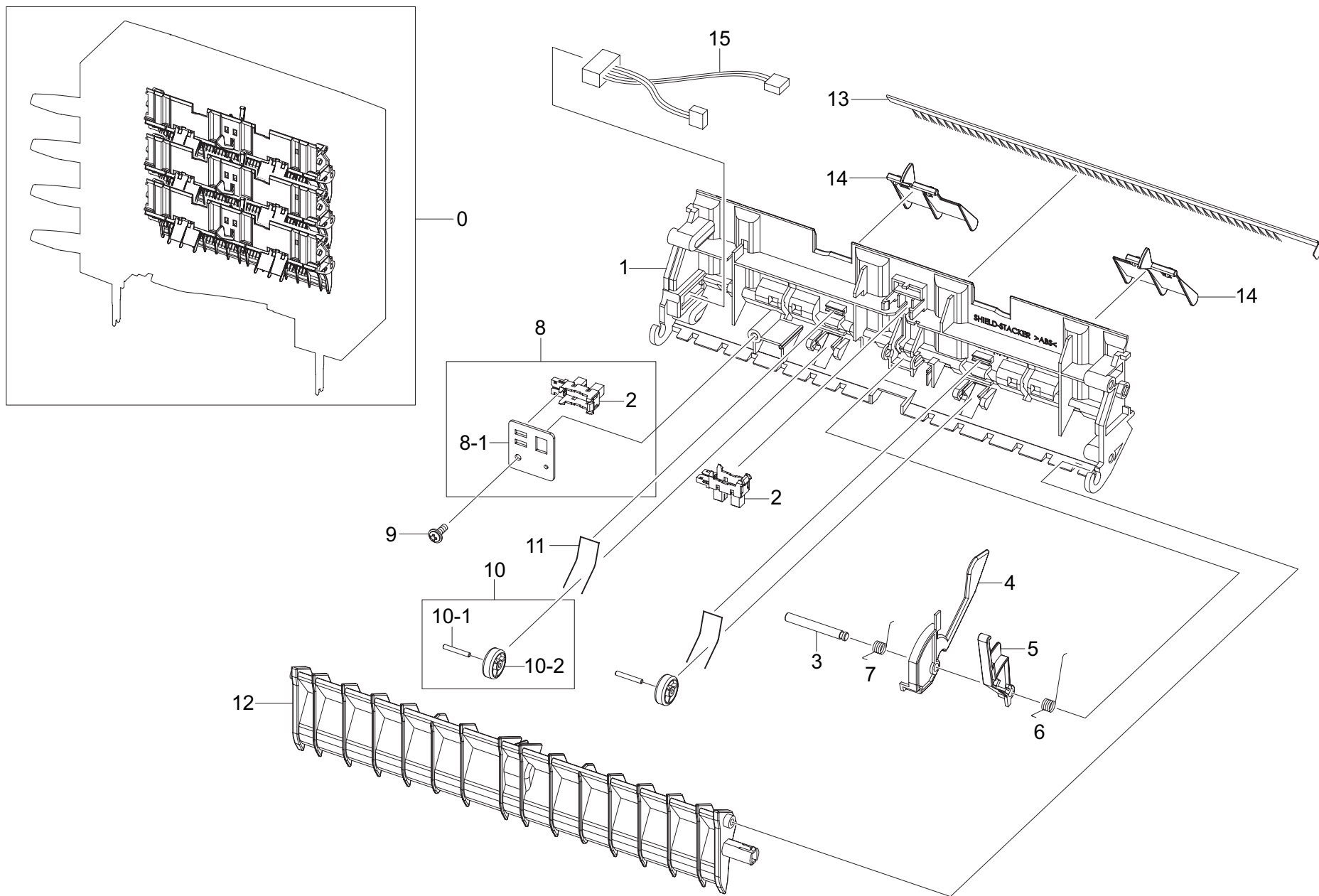
## AS-SHIELD TOP STKR ASSY Parts List

SA : SERVICE AVAILABLE, SNA : SERVICE not AVAILABLE

Drawing#	SEC_Code	Description	QT'y	Service	Remark
0	JC81-07267A	AS-SHIELD TOP STKR ASSY	1	SA	KRDC(SJMB 1118)
1	JC81-07273A	AS-COVER HARNESS ASSY	1	SA	KRDC(SJMB 1119)
1-1	-	COVER:HARNESS	1	SNA	KRDC(SJMB 1320)
1-2	JC81-07274A	MAGNET:BY3-32-1	1	SA	KRDC(CF10 T702)
1-3	JC81-03469A	MICRO SWITCH:VP333A-0D	1	SA	-
2	JC81-07269A	AS-SHIELD TOP STACKER	1	SA	KRDC(SJMB 2320A)
3	JC81-07266A	AS-ANTI_STATIC BRUSH	1	SA	KRDC(SJMB 2802A)
4	JC81-07253A	AS-ACTUATOR FULL STACKER	2	SA	KRDC(SJMB 2314A)
5	JC81-07268A	AS-ROLLER IDLE FEED ASSY	2	SA	KRDC(SJMB 1116)

Drawing#	SEC_Code	Description	QT'y	Service	Remark
5-1	-	ROLLER:IDLE:FEED	2	SNA	KRDC(SJMB 2306)
5-2	-	PARALLEL PIN:Φ2×14	2	SNA	KRDC(P632 0140G)
6	JC81-07272A	AS-T_SPRING GUIDE M/B	2	SA	KRDC(SJMB 2508A)
7	-	BKT:SENSOR:STACKER:SUB ASSY	1	SNA	KRDC(SJMB 1114)
7-1	0604-001095	PI SENSOR:GP1S73P2	1	SA	KRDC(0604-001095)
7-2	JC81-07270A	AS-BKT SENSOR STACKER	1	SA	KRDC(SJMB 2202A)
8	-	PAN WASHER HEADED SCREW:M3×8:T2	1	SNA	KRDC(0965 3008N)

### 3. AS-ACTUATOR SHIELD ASSY



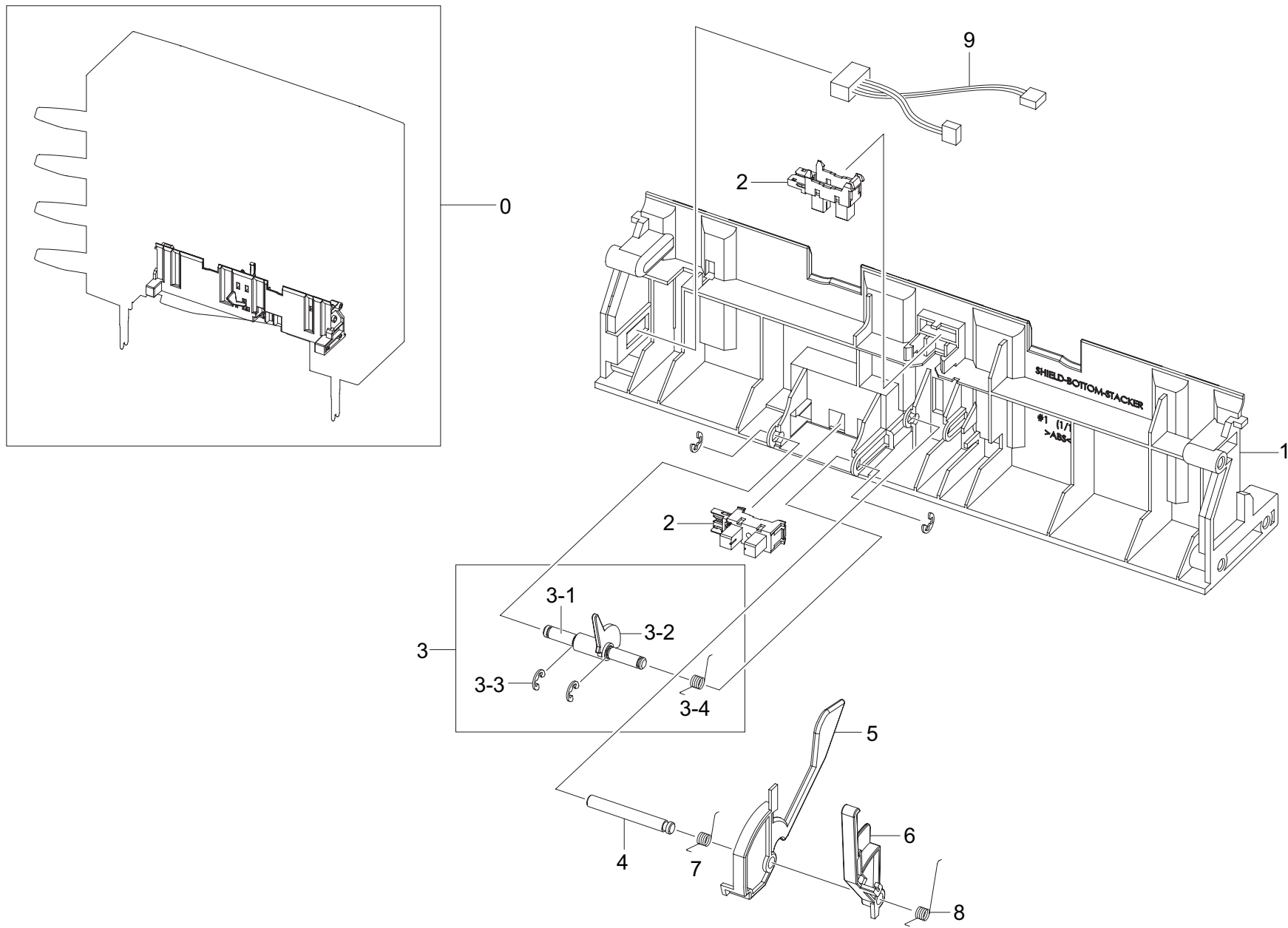
## AS-ACTUATOR SHIELD ASSY Parts List

SA : SERVICE AVAILABLE, SNA : SERVICE not AVAILABLE

Drawing#	SEC_Code	Description	QT'y	Service	Remark
0	JC81-07265A	AS-ACTUATOR SHIELD ASSY	3	SA	KRDC(SJMB 1113)
1	-	SHIELD:STACKER	1	SNA	KRDC(SJMB 2316)
2	0604-001095	PI SENSOR:GP1S73P2	2	SA	KRDC(0604-001095)
3	-	SHAFT:ACTUATOR:STACKER	1	SNA	KRDC(SJMB 2402)
4	-	ACTUATOR:EMPTY:STACKER	1	SNA	KRDC(SJMB 2310)
5	-	ACTUATOR:EXIT:FEED	1	SNA	KRDC(SJMB 2312)
6	-	TORSION SPRING:PAPER PATH	1	SNA	KRDC(SJMB 2504)
7	-	TORSION SPRING:TRAY EMPTY	1	SNA	KRDC(SJMB 2502)
8	-	BKT:SENSOR:STACKER:SUB ASSY	1	SNA	KRDC(SJMB 1114)
8-1	JC81-07270A	AS-BKT SENSOR STACKER	1	SA	KRDC(SJMB 2202A)

Drawing#	SEC_Code	Description	QT'y	Service	Remark
9	-	PAN WASHER HEADED SCREW:M3×8:T2	1	SNA	KRDC(0965 3008N)
10	JC81-07268A	AS-ROLLER IDLE FEED ASSY	2	SA	KRDC(SJMB 1116)
10-1	-	PARALLEL PIN:Φ2×14	2	SNA	KRDC(P632 0140G)
10-2	-	ROLLER:IDLE:FEED	2	SNA	KRDC(SJMB 2306)
11	JC81-07272A	AS-T_SPRING GUIDE M/B	2	SA	KRDC(SJMB 2508A)
12	-	SEPARATE:PAWL:FEED	1	SNA	KRDC(SJMB 2302)
13	JC81-07266A	AS-ANTI_STATIC BRUSH	1	SA	KRDC(SJMB 2802A)
14	JC81-07253A	AS-ACTUATOR FULL STACKER	2	SA	KRDC(SJMB 2314A)
15	-	ASSY, MH, TRAY SNR RELAY	1	SNA	KRDC(SJMB 8320)

### 4. AS-BASE SUB ASSY



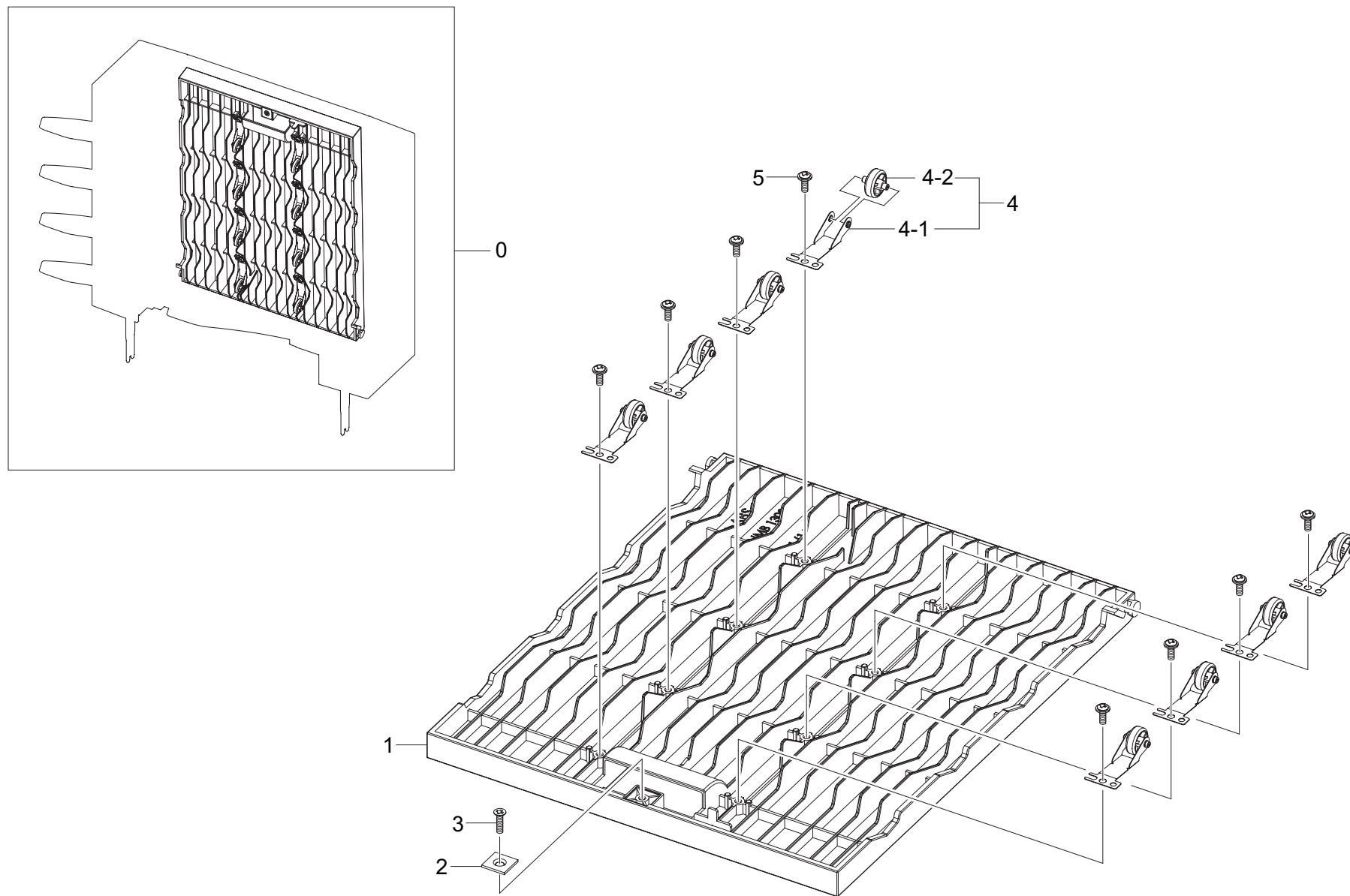
## AS-BASE SUB ASSY Parts List

SA : SERVICE AVAILABLE, SNA : SERVICE not AVAILABLE

Drawing#	SEC_Code	Description	QT'y	Service	Remark
0	JC81-07264A	AS-BASE SUB ASSY	1	SA	KRDC(SJMB 1110)
1	-	SHIELD:BOTTOM:STACKER	1	SNA	KRDC(SJMB 2324)
2	0604-001095	PI SENSOR:GP1S73P2	2	SA	KRDC(0604-001095)
3	-	ACTUATOR:ENTRANCE:SUB ASSY	1	SNA	KRDC(SJMB 1112)
3-1	-	SHAFT:ACTUATOR:FEED	1	SNA	KRDC(SJMB 2404)
3-2	-	ACTUATOR:ENTRANCE:FEED	1	SNA	KRDC(SJMB 2326)
3-3	-	E-RING:Φ3	4	SNA	KRDC(1720 0030G)

Drawing#	SEC_Code	Description	QT'y	Service	Remark
3-4	-	T-SPRING:ACTUATOR:STACK	1	SNA	KRDC(SJ10 6682)
4	-	SHAFT:ACTUATOR:STACKER	1	SNA	KRDC(SJMB 2402)
5	-	ACTUATOR:EMPTY:STACKER	1	SNA	KRDC(SJMB 2310)
6	-	ACTUATOR:EXIT:FEED	1	SNA	KRDC(SJMB 2312)
7	-	TORSION SPRING:TRAY EMPTY	1	SNA	KRDC(SJMB 2502)
8	-	TORSION SPRING:PAPER PATH	1	SNA	KRDC(SJMB 2504)
9	-	ASSY, MH, TRAY SNR RELAY	1	SNA	KRDC(SJMB 8320)

### 5. AS-COVER JAM FRAME ASSY



## AS-COVER JAM FRAME ASSY Parts List

SA : SERVICE AVAILABLE, SNA : SERVICE not AVAILABLE

Drawing#	SEC_Code	Description	QT'y	Service	Remark
0	JC81-07282A	AS-COVER JAM FRAME ASSY	1	SA	KRDC(SJMB 1150)
1	-	COVER:JAM:FRAME	1	SNA	KRDC(SJMB 1308)
2	-	MAGNET CATCH PLATE:TB	1	SNA	KRDC(CF10 T209)
3	-	COUNTERSINK SCREW:M3×10:T2	1	SNA	KRDC(0323 0102N)
4	-	IDLE ROLLER:ASSY	8	SNA	KRDC(SJMB 1152)

Drawing#	SEC_Code	Description	QT'y	Service	Remark
4-1	-	LEAF SPRING:FEED	8	SNA	KRDC(SJ10 2202)
4-2	-	ROLLER:IDLE:FEED	8	SNA	KRDC(SJ10 2302)
5	-	PAN WASHER HEADED SCREW:M3×8:T2	8	SNA	KRDC(0965 3008N)