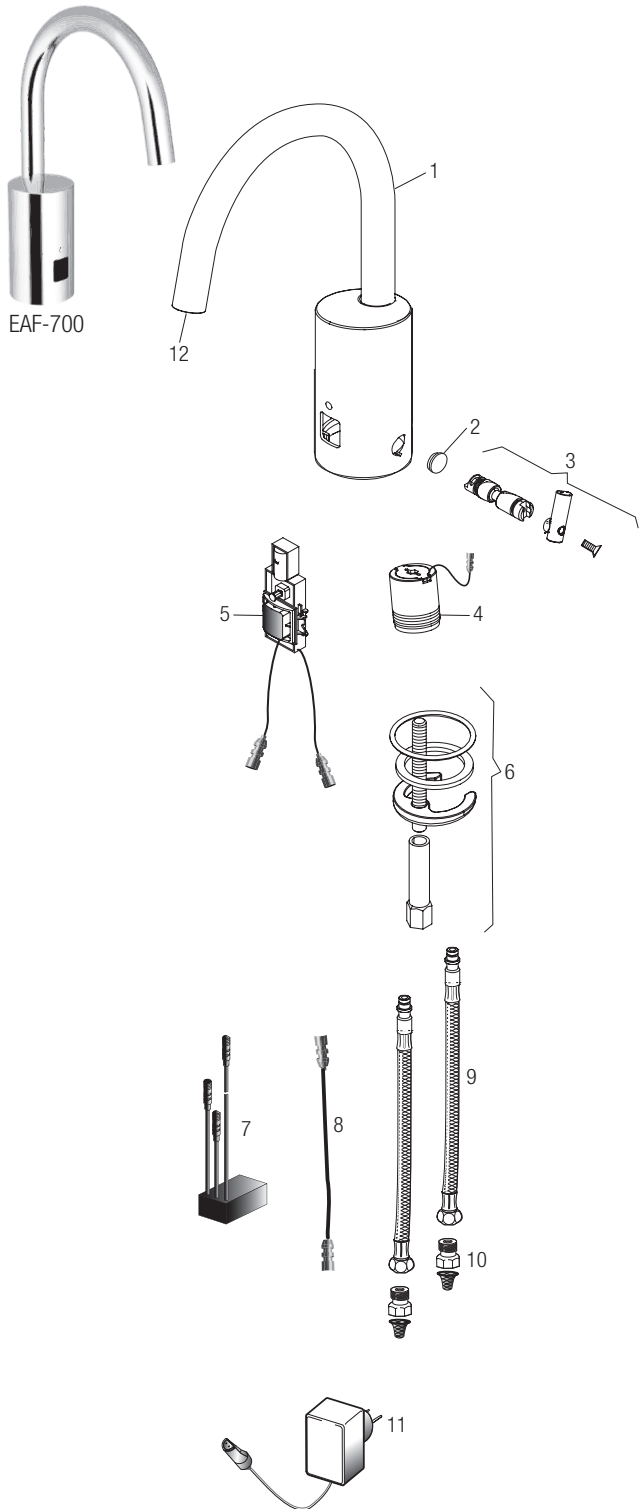


# Optima® EAF-700

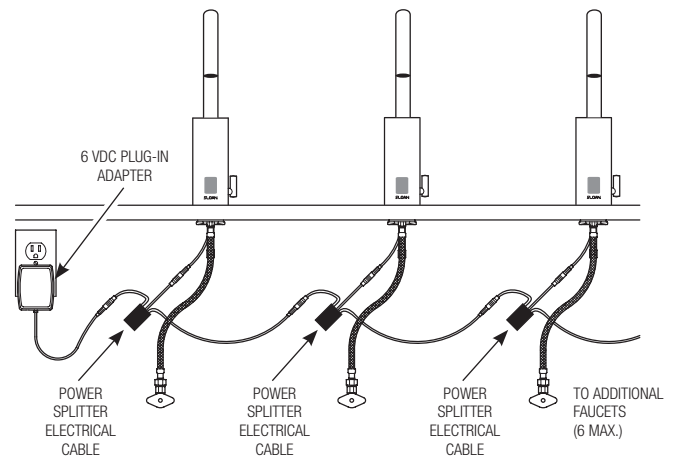


## PARTS LIST—EAF-700 FAUCETS

Item No.	Code No.	Part No.	Description
1.	—	—	Spout Assembly
2.	<b>3335022</b>	EAF-1007	Integral Side Mixer Handle Cap
3.	<b>3335019</b>	EAF-1004	Integral Side Mixer Kit
4.	<b>0335001</b>	EAF-2	Solenoid
5.	<b>3335099</b>	EAF-1017-A	Sensor Assembly
6.	<b>0335000</b>	EAF-1	Mounting Hardware
7.	<b>0335044</b>	EAF-44	Power Splitter
8.	<b>0335024</b>	EAF-24-A	11-13/16" (300 mm) Extension Cable
	<b>0335025</b>	EAF-25-A	47-1/4" (1200 mm) Extension Cable
	<b>0335015</b>	EAF-17-A	126" (3200 mm) Extension Cable
9.	<b>3335023</b>	EAF-1008	13" (330 mm) Flexible Supply Hose (1)
10.	<b>0335007</b>	EAF-9	Filter/Strainer
11.	<b>0335009</b>	EAF-11-A	Plug-in Voltage Adapter, US Plug
12.	<b>3335086</b>	EAF-1014-A	Multi-Lam Spray Head Kit 0.5 gpm (1.9 Lpm) Male Cache TJ
	<b>3335087</b>	EAF-1015-A	Spray Head Kit 1.5 gpm (5.7 Lpm) Aerated Male Cache TJ
	<b>3335088</b>	EAF-1016-A	Spray Head Kit 1.5 gpm (5.7 Lpm) Laminar Male Cache TJ

\*Not Shown: SFP-11 4" Trimplate / SFP-22 8" Trimplate

## Electrical Connection for up to Six (6) Faucets Using One (1) Adapter

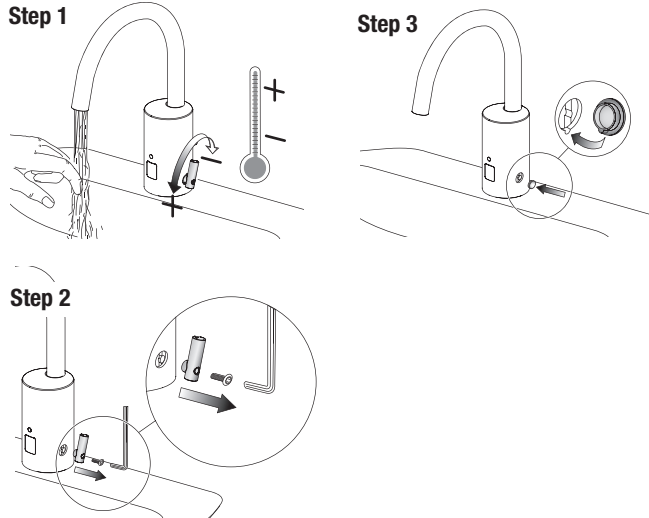


# Optima® EAF-700

## OPERATION

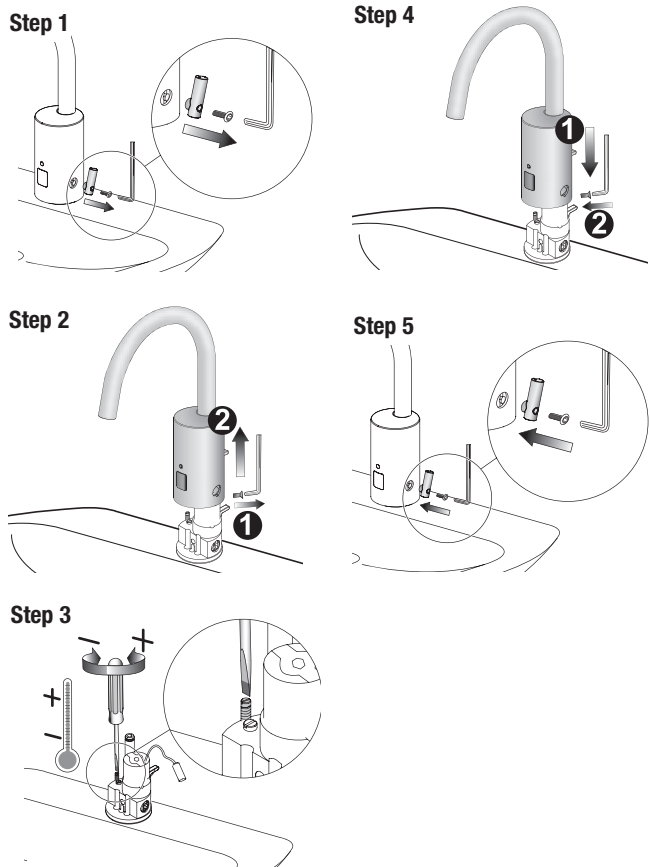
As the user's hands enter the beam's effective range, the beam is reflected back into the sensor receiver and activates the solenoid valve allowing water to flow from the faucet. Water will flow until the hands of the user are removed or until the faucet reaches its automatic time out limit setting.

## SET AND FIX TEMPERATURE (OPTIONAL)



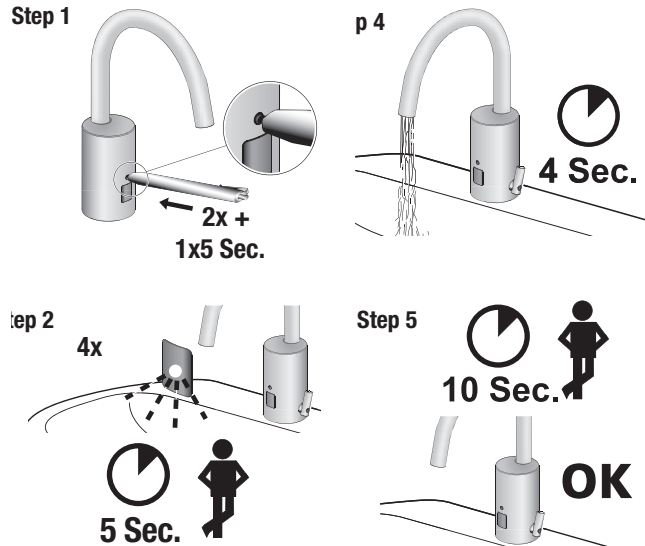
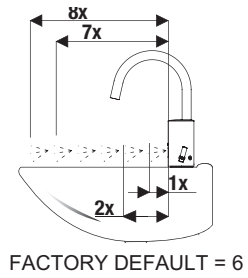
## HOT LIMIT STOP ADJUSTMENT

Limit the maximum water temperature. **NOTE:** This **DOES NOT** take the place of an ASSE 1070 certified mixing device. But is an added measure to limit delivery of hot water.



## SENSOR RANGE ADJUSTMENT

Factory setting is appropriate for the majority of applications and should not require resetting unless under extreme situations.



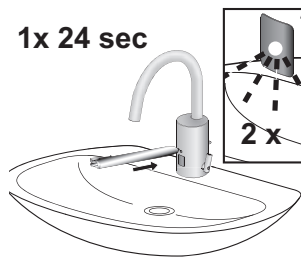
**Optima® EAF-700**

**12/24 LINE PURGE FEATURE**

This feature will operate the faucet every 12 or 24 hours since last use, if not used to prevent stagnant water conditions.

Default purge duration is two (2) minutes.

Consult factory regarding other timing options.



**OFF-DELAY (FOLLOW UP TIME)**

Duration of time the water runs after target is removed.

Press the button for approximately six (6) seconds. Release.

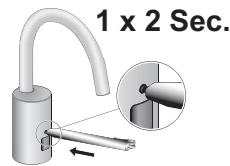
Press again (water flows) and release when the desired time of water flow (0-5 seconds) is reached.



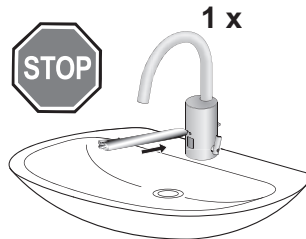
**I.Q.-CLICK FEATURE**

**1. CONTINUOUS RUN**

Continuous run of water for two minutes.

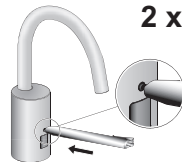


Faucet will operate normally after two minutes or after pressing i.q.-click button once.

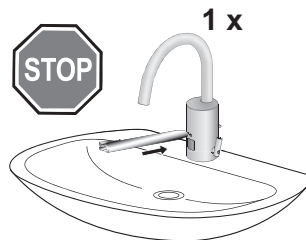


**2. CLEANING MODE**

Pause faucet for cleaning for two (2) minutes.



Faucet will operate normally after two (2) minutes or after pressing i.q.-click button once.



## Optima® EAF-700

### TROUBLESHOOTING GUIDE

#### 1. Faucet DOES NOT function.

- A. Adhesive packaging label affixed over sensor eye. Remove adhesive label from sensor eye.
- B. "Intermittent Off" is activated. Press button once.
- C. Water supply stop(s) closed. Open water supply stop(s).
- D. Battery is "dead". Replace battery (refer to Battery Replacement section of guide).

#### 2. Faucet delivers water in an uncontrolled manner.

- A. Reflection. Remove reflective surface.
- B. Faucet is not working properly. Contact Sloan Technical Support.

#### 3. Faucet DOES NOT deliver any water when sensor is activated.

INDICATOR: Solenoid valve produces an audible "CLICK."

- A. Water supply stop(s) closed. Open water supply stop(s).
- B. Water supply stop strainer(s) clogged. Remove, clean, and reinstall water supply stop strainer(s). Replace strainer(s), if required.

INDICATOR: Solenoid valve DOES NOT produce an audible "CLICK."

- A. Power failure. Check power supply.

#### 4. Faucet delivers only a slow flow or dribble when sensor is activated.

- A. Water supply stop(s) are partially closed. Completely open water supply stop(s).
- B. Water supply stop strainer(s) clogged. Remove, clean, and reinstall water supply stop strainer(s). Replace strainer(s), if required.
- C. Spray head is clogged. Remove, clean, and reinstall spray head. Replace spray head, if required.
- D. Faucet is not working properly. Contact Sloan Technical Support.

#### 5. Faucet DOES NOT stop delivering water or continues to drip after user is no longer detected.

- A. Faucet is not working properly. Contact Sloan Technical Support.

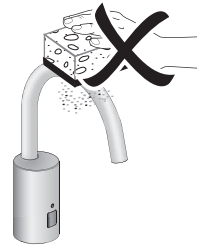
#### 6. The water temperature is too hot or too cold on a faucet connected to hot and cold supply lines.

- A. Supply stops are not adjusted properly. Adjust supply stops.

### CARE AND CLEANING

**DO NOT USE** abrasive or chemical cleaners (including chlorine bleach) to clean faucets that may dull the luster and attack the chrome or special decorative finishes. Use **ONLY** mild soap and water, then wipe dry with clean cloth or towel.

While cleaning the bathroom sink, protect the faucet from any splattering of cleaner. Acids and cleaning fluids will discolor or remove chrome plating.



**When assistance is required, please contact Sloan Technical Support at: 1-888-SLOAN-14 (1-888-756-2614).**