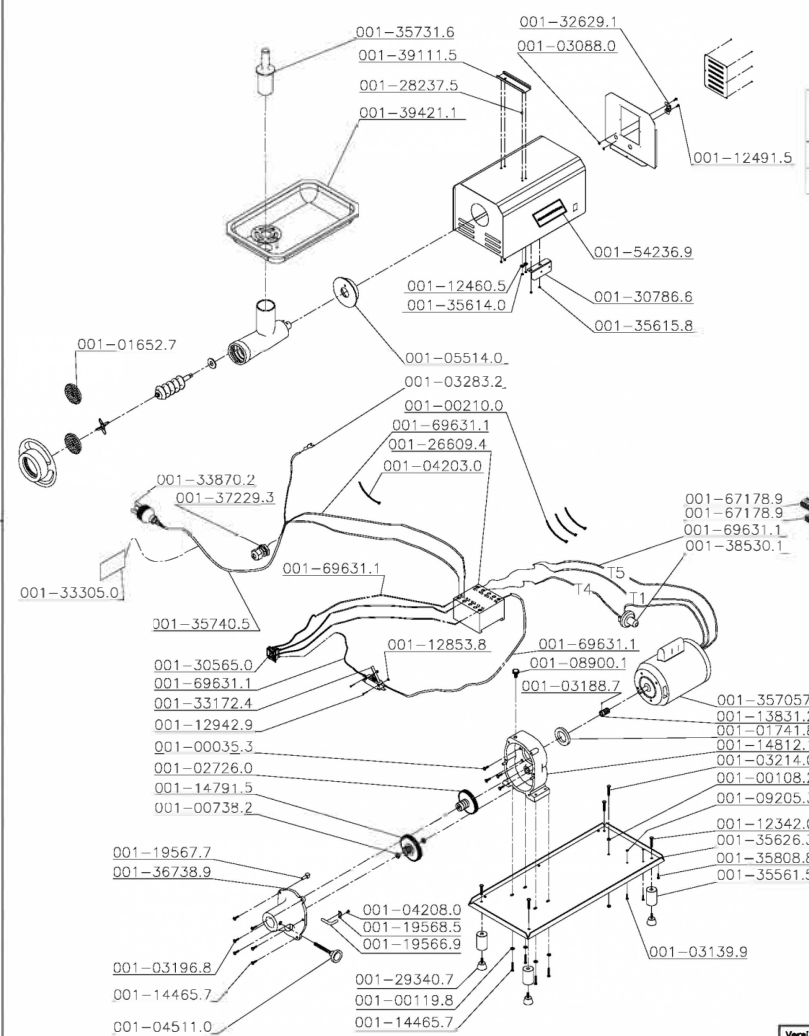
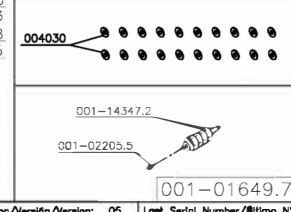
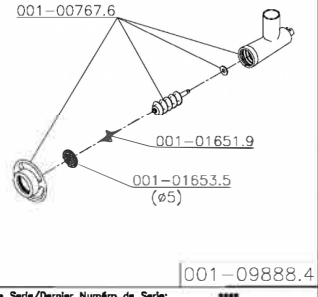
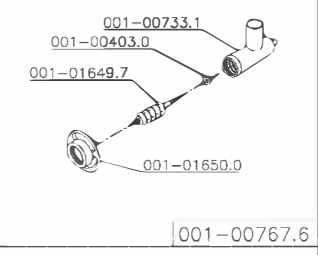
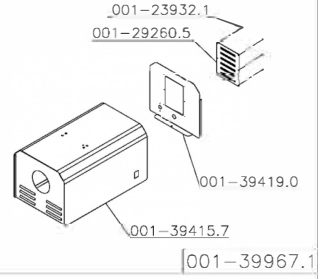


| | | | |
|--|--------|---------------------|-----------------------------|
| Denomination/Denominaci3n/D3nominati3n | Item | Skyfo3d Semiatic | Date/Fecha/Date: 01/11/2024 |
| MEAT GRINDER | PSE-12 | | |
| PICADORA PARA CARNES | | | |
| HACHEUR | | | |

OPTIONAL DISCS

| DENOMINATION | CODE |
|--------------|-------------|
| DISC 8mm | 001-01654.3 |

- 001-67136.3
- 001-32832.4
- 001-35691.3
- 001-33161.9
- 001-33303.4
- 001-33306.9
- 001-33307.7
- 001-33916.4
- 001-33170.8
- 001-38110.1
- 001-31140.5



| Cód. | Descrição | UM |
|-------------|--|-------------|
| 001-022055 | WORM PIN | By the each |
| 001-016497 | WORM N. 10 - PS-10 | By the each |
| 001-147915 | FIBER GEAR FOR PS-98M / PS-22 / PS-10 | By the each |
| 001-098884 | COMPLETE HEAD 10 | By the each |
| 001-357316 | CERTIF. PUSHER N10 | By the each |
| 001-357138 | PAN PSEE-10 | By the each |
| 001-182230 | LID FOR GEAR BOX | By the each |
| 001-045110 | KNOB WITH BAR M10X30MM - PS-22 / PSEE-12 | By the each |
| 001-337960 | FLEETWOOD LABEL 145MM | By the each |
| 001-331724 | SWITCH 40127 A2ERQ-KEMA | By the each |
| 001-007382 | BALL BEARING 6001 | By the each |
| 001-016500 | WHEEL # 10 | By the each |
| 001-031887 | ALLEN SCREW M6X8 | By the each |
| 001-042030 | BRACER T-18R-SMALL | By the each |
| 001-175811 | FEMALE TERMINAL WITH LOCK (FOR WIRE FROM 1 TO 2) | By the each |
| 001-175820 | TERMINAL COVER | By the each |
| 001-036781 | NYLON COVER CN-4478 | By the each |
| 001-124605 | WASHER L.A8,4 STAINLESS STEEL | By the each |
| 001-032832 | TERM. PRE-INSUL.AN-2434 | By the each |
| 001-002100 | CLAMP K22 (T-50R) | By the each |
| 001-030880 | SCREW NUT M3 DIN 934 ZB | By the each |
| 001-090930 | SCREW M3X16 DIN 84 ZB | By the each |
| 001-282375 | MICRO ACTIVATION PIN | By the each |
| 001-092053 | NUT M4 DIN 934 | By the each |
| 001-124915 | SCREW M3X10 DIN 84 S/S | By the each |

| Cód. | Descrição | UM |
|-------------|--|-------------|
| 001-128538 | NUT M3 DIN 934 S/S | By the each |
| 001-001198 | WASHER L 5/16 ZB | By the each |
| 001-155993 | SCREW B.3,5X9,5 DIN 7971 | By the each |
| 001-017418 | RETAINER SEAL 00784BR1(F.0122) - PSP-98M / PSEE-12 | By the each |
| 001-373575 | COMPLETE MOTOR HOUSING | By the each |
| 001-004030 | *FIBER WASHER N9 N10 | By the each |
| 001-042080 | SCREW M3X6 DIN 84 ZB | By the each |
| 001-089001 | OIL CAP PSN/EE-CMSE | By the each |
| 001-195669 | COPPER TUBE | By the each |
| 001-195685 | MEAT MINCER STAPLE | By the each |
| 001-229962 | SCREW M5X6 DIN 84 STAINLESS STEEL | By the each |
| 001-305650 | SWITCH 30223 - MPAL/PSP-98M/CFI-300/RQ-150/PA-7/ESB-N/MSL/PS-10/PS-22/PAIE | By the each |
| 001-319236 | CORD PRESS PG13,5 LCP13,5BL+ NUT WITH REDUCTOR | By the each |
| 001-326291 | THERMAL PROTECTION (PROTECTOR) | By the each |
| 001-328324 | INSTRUCTION MANUAL LABEL | By the each |
| 001-331619 | LABEL TERMO PROTECTION | By the each |
| 001-331708 | LABEL ATTENTION GROUND WIRE | By the each |
| 001-333034 | LABEL ATTENTION CAUTION ENG/FRE | By the each |
| 001-333050 | ATTENTION TAG 110/220/380V UN. PC | By the each |
| 001-333069 | LABEL DANGER ENG/FREN. | By the each |
| 001-333077 | LABEL WARNING ENG/FRE | By the each |
| 001-339164 | ETIQ.ATENCAO OLEO | By the each |
| 001-356930 | PERFIL ACABAMENTO 800mm | By the each |
| 001-031399 | SCREW M4X16 84 ZB | By the each |
| 001-245488 | SCREW M10X12 DIN 933 ZB | By the each |

| Cód. | Descrição | UM |
|-------------|--|-------------|
| 001-311405 | EARTH-WIRE LABEL | By the each |
| 001-338702 | CERTIFIED AMERICAN PLUG 20A | By the each |
| 001-357405 | CABLE 3X3, 3MM2 SJX2M CERTIF | By the each |
| 001-000353 | SCREW SEX UNC1/4X1 RTZB | By the each |
| 001-001082 | PCA SEX UNC 3/8 ZB | By the each |
| 001-129429 | SCREW M3X16 DIN 84 S/S | By the each |
| 001-031968 | SCREW M8X10 DIN 933 ZB | By the each |
| 001-239321 | SCREW M4X5 DIN 7985 | By the each |
| 001-123420 | SCREW M10X20 DIN 933 ZB | By the each |
| 001-293407 | RUBBER FOOT W/ SCREW M10X30 | By the each |
| 001-027286 | SCREW M8X25 DIN 933 ZB | By the each |
| 001-266094 | CONTACTOR CWM25.10 110V 50,60HZ - SI-282HD | By the each |
| 001-001678 | LOGOTIPO SKYMSSEN 145mm | By the each |
| 001-144657 | SCREW M8X25 DIN 933 STAINLESS STEEL | By the each |
| 001-032140 | PFS SEX UNC3/8x2.3/4 RPZB | By the each |
| 001-138312 | MOTOR GEAR - PS-98M / PS-22/ PS-10 | By the each |
| 001-195677 | LID COUPLING CONNECTION | By the each |
| 001-282367 | SUPORTE MICRO(282367) | By the each |
| 001-355615 | FEET SPACER | By the each |
| 001-356140 | NUT M6 SPECIAL ZB | By the each |
| 001-356158 | NUT M4 SPECIAL ZB | By the each |
| 001-356999 | FIO EL.FLEX.3,3x400mm CERT. | By the each |
| 001-357006 | FIO EL.FLEX.3,3x670mm CERT. | By the each |
| 001-362166 | FIO EL.FLEX.3,3x650mm CERT. | By the each |
| 001-372293 | COMPLETE CORD HOLDER PG21 | By the each |

| Cód. | Descrição | UM |
|-------------|--|-------------|
| 001-381101 | LABEL WARNING | By the each |
| 001-148121 | GEAR BOX W/PIN | By the each |
| 001-292184 | CS APOIO DA BANDEJA | By the each |
| 001-307866 | MICRO SUPPORT (ALUMINIUM) | By the each |
| 001-356352 | CS GABINETE CERTIFICADO | By the each |
| 001-357308 | TAMPA TRASEIRA COMPL.CERT | By the each |
| 001-357421 | GABINETE COMPL. CERTIF. PSEE-10 1CV | By the each |
| 001-373168 | CS TAMPA TRASEIRA CERT. | By the each |
| 001-385301 | THERMAL PROTECTION | By the each |
| 001-016519 | *KNIFE N10 | By the each |
| 001-016527 | *DISC 3 mm N10 | By the each |
| 001-016535 | *DISC 5 MM N10 | By the each |
| 001-007331 | HEAD N10 | By the each |
| 001-007676 | THROAT SET N10 | By the each |
| 001-027260 | WORM GEAR - PS-10 / PSEE-12 | By the each |
| 001-055140 | RUBBER LID | By the each |
| 001-349216 | PFS SEX UNC3/8x3 RTZB | By the each |
| 001-356263 | BASE CERTIFICADA (CINZA)(356263) | By the each |
| 001-357057 | MOTOR 1,5CV 60HZ W C/PROT. | By the each |
| 001-391115 | TRAY REST | By the each |
| 001-399671 | COMPLETE HOUSING CERTIFIED | By the each |
| 001-394211 | TRAY PSEE-10 CERT. | By the each |
| 001-220442 | PFS B.2,9x6,5 DIN 7981 INOX (OBSOLETO) | By the each |
| 001-292605 | VENEZIANA 25x5x100(292605) | By the each |
| 001-394157 | CABINET SET CERTIFIED | By the each |

| Cód. | Descrição | UM |
|------------|---|-------------|
| 001-394190 | TAMPA TRASEIRA CERT.1,5CV | By the each |
| 001-367389 | GEAR BOX LID (WITH MART.) | By the each |
| 001-509493 | CHAVE TECLA C/PROT.30223 M2FT2FE3G/19 | By the each |
| 001-542369 | SKYFOOD STICKER | By the each |
| 001-671789 | CONECTOR EMENDA WAGO 2X0,25-4MM2 | By the each |
| 001-665460 | CONECTOR EMENDA WAGO 5x0,25-4mm2 (221 | By the each |
| 001-696311 | PSE-12/ PCI-21G COMPLETE ELECTRICAL HARNESS | By the each |