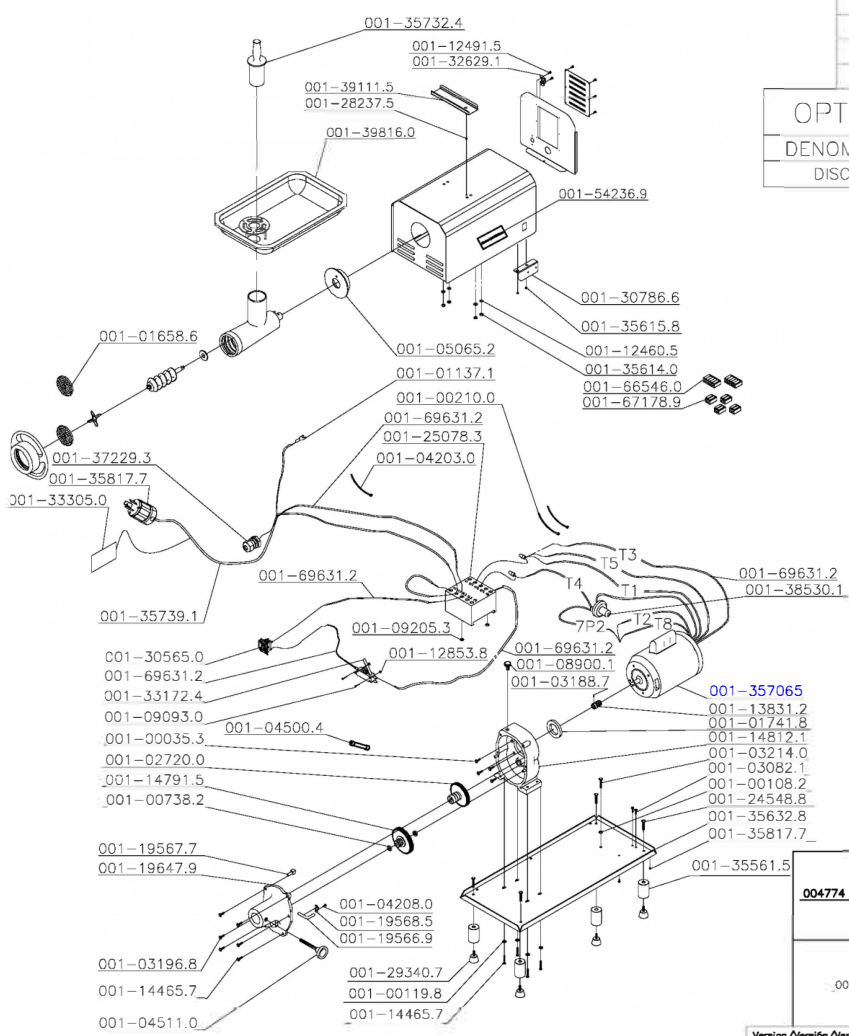
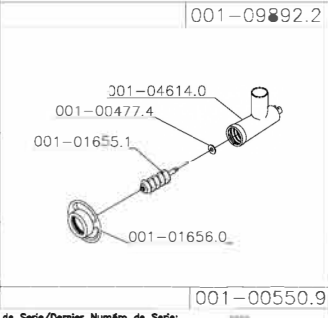
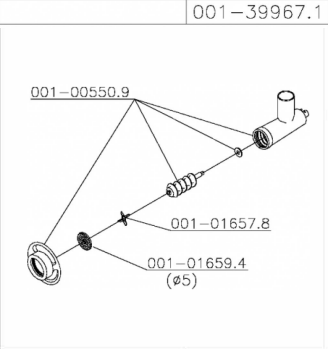
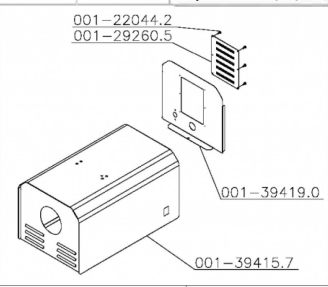


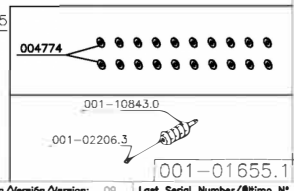
Denomination/Denominaci3n/D3nominati3n	Item	Skyfo3d
MEAT GRINDER	PCI-22C	
PICADORA PARA CARNES		
HACHEUR		

Date/Fecha/Date: 01/11/2024

OPTIONAL DISCS	
DENOMINATION	CODE
DISC 8mm	001-01660.8



- 001-32832.4
- 001-35691.3
- 001-33161.9
- 001-33303.4
- 001-33306.9
- 001-33307.7
- 001-33316.4
- 001-33170.8
- 001-38110.1
- 001-67136.3



Version/Versi3n/Versi3n: 09 Last Serial Number/3ltimo N3 de Serie/Dernier Num3ro de Serie: \*\*\*\*

<b>Cód.</b>	<b>Descrição</b>	<b>UM</b>
001-147915	FIBER GEAR FOR PS-98M / PS-22 / PS-10	By the each
001-045110	KNOB WITH BAR M10X30MM - PS-22 / PSEE-12	By the each
001-108430	WORM WITHOUT PIN FOR PSEE-22	By the each
001-337960	FLEETWOOD LABEL 145MM	By the each
001-331724	SWITCH 40127 A2ERQ-KEMA	By the each
001-007382	BALL BEARING 6001	By the each
001-016551	WORM NO.22 - PS-22	By the each
001-022063	WORM PIN #22	By the each
001-031887	ALLEN SCREW M6X8	By the each
001-042030	BRACER T-18R-SMALL	By the each
001-175811	FEMALE TERMINAL WITH LOCK (FOR WIRE FROM 1 TO 2)	By the each
001-175820	TERMINAL COVER	By the each
001-036781	NYLON COVER CN-4478	By the each
001-032832	TERM. PRE-INSUL.AN-2434	By the each
001-002100	CLAMP K22 (T-50R)	By the each
001-030880	SCREW NUT M3 DIN 934 ZB	By the each
001-090930	SCREW M3X16 DIN 84 ZB	By the each
001-282375	MICRO ACTIVATION PIN	By the each
001-092053	NUT M4 DIN 934	By the each
001-124915	SCREW M3X10 DIN 84 S/S	By the each
001-128538	NUT M3 DIN 934 S/S	By the each
001-176281	TERM.FEMEA C/TRAVA 2 a 4mm2	By the each
001-001198	WASHER L 5/16 ZB	By the each
001-155993	SCREW B.3,5X9,5 DIN 7971	By the each
001-017418	RETAINER SEAL 00784BR1(F.0122) - PSP-98M / PSEE-12	By the each

<b>Cód.</b>	<b>Descrição</b>	<b>UM</b>
001-373575	COMPLETE MOTOR HOUSING	By the each
001-042080	SCREW M3X6 DIN 84 ZB	By the each
001-089001	OIL CAP PSN/EE-CMSE	By the each
001-195669	COPPER TUBE	By the each
001-195685	MEAT MINCER STAPLE	By the each
001-229962	SCREW M5X6 DIN 84 STAINLESS STEEL	By the each
001-305650	SWITCH 30223 - MPAL/PSP-98M/CFI-300/RQ-150/PA-7/ESB-N/MSL/PS-10/PS-22/PAIE	By the each
001-319236	CORD PRESS PG13,5 LCP13,5BL+ NUT WITH REDUCTOR	By the each
001-326291	THERMAL PROTECTION (PROTECTOR)	By the each
001-328324	INSTRUCTION MANUAL LABEL	By the each
001-331619	LABEL TERMO PROTECTION	By the each
001-331708	LABEL ATTENTION GROUND WIRE	By the each
001-333034	LABEL ATTENTION CAUTION ENG/FRE	By the each
001-333050	ATTENTION TAG 110/220/380V UN. PC	By the each
001-333069	LABEL DANGER ENG/FREN.	By the each
001-333077	LABEL WARNING ENG/FRE	By the each
001-339164	ETIQ.ATENCAO OLEO	By the each
001-356930	PERFIL ACABAMENTO 800mm	By the each
001-031399	SCREW M4X16 84 ZB	By the each
001-357332	PAN # 22	By the each
001-000353	SCREW SEX UNC1/4X1 RTZB	By the each
001-001082	PCA SEX UNC 3/8 ZB	By the each
001-129429	SCREW M3X16 DIN 84 S/S	By the each
001-031968	SCREW M8X10 DIN 933 ZB	By the each
001-123420	SCREW M10X20 DIN 933 ZB	By the each

<b>Cód.</b>	<b>Descrição</b>	<b>UM</b>
001-357065	MOTOR 2CV 60HZ WITH PROT.	By the each
001-250783	CONTACTOR. CWM32 110V 50/60HZ - PSP-98M / SFL-282HD	By the each
001-293407	RUBBER FOOT W/ SCREW M10X30	By the each
001-027286	SCREW M8X25 DIN 933 ZB	By the each
001-357030	PLUG AMERICANO CERTIFICADO 30A (1PKJ8	By the each
001-378437	PLUG AMERICANO CERTIF.30A 125V (4A262	By the each
001-001678	LOGOTIPO SKYMSSEN 145mm	By the each
001-144657	SCREW M8X25 DIN 933 STAINLESS STEEL	By the each
001-004774	*FIBER WASHER N22 N98	By the each
001-027200	WORM GEAR - PS-22 / PSEE-22	By the each
001-032140	PFS SEX UNC3/8x2.3/4 RPZB	By the each
001-050652	RUBBER COVER - PS-98M	By the each
001-138312	MOTOR GEAR - PS-98M / PS-22/ PS-10	By the each
001-195677	LID COUPLING CONNECTION	By the each
001-282367	SUPORTE MICRO(282367)	By the each
001-355615	FEET SPACER	By the each
001-356140	NUT M6 SPECIAL ZB	By the each
001-356158	NUT M4 SPECIAL ZB	By the each
001-372293	COMPLETE CORD HOLDER PG21	By the each
001-381101	LABEL WARNING	By the each
001-005509	TROAT SET N22	By the each
001-016560	WHEEL PSEE-22	By the each
001-016578	*KNIFE N22	By the each
001-016586	*DISC 3 MM N22	By the each
001-016594	*DISC 5mm N22	By the each

<b>Cód.</b>	<b>Descrição</b>	<b>UM</b>
001-045004	EMENDA LU-2694	By the each
001-046140	HEAD N22	By the each
001-098922	COMPLETE #22 MEAT GRINDING HEAD	By the each
001-148121	GEAR BOX W/PIN	By the each
001-196479	GEAR BOX LID PCI022G	By the each
001-292184	CS APOIO DA BANDEJA	By the each
001-307866	MICRO SUPPORT (ALUMINIUM)	By the each
001-355933	TAMPA FRONTAL CERTIFICADA	By the each
001-356328	CERTIFIED BASE (GREY)	By the each
001-356352	CS GABINETE CERTIFICADO	By the each
001-357308	TAMPA TRASEIRA COMPL.CERT	By the each
001-357324	CERTIF. PUSHER N22	By the each
001-357391	CB.3x5,3mm2 SJx2m CERTIF.	By the each
001-357421	GABINETE COMPL. CERTIF. PSEE-10 1CV	By the each
001-357847	FIO EL.FLEX.5,3x300mm CERT.	By the each
001-357855	FIO EL.FLEX.5,3x670mm CERT.	By the each
001-362182	FIO EL.FLEX.5,3x650mm CERT.	By the each
001-373168	CS TAMPA TRASEIRA CERT.	By the each
001-385301	THERMAL PROTECTION	By the each
001-391115	TRAY REST	By the each
001-398160	TRAY NO. 22 CERT.	By the each
001-399671	COMPLETE HOUSING CERTIFIED	By the each
001-509493	CHAVE TECLA C/PROT.30223 M2FT2FE3G/19	By the each