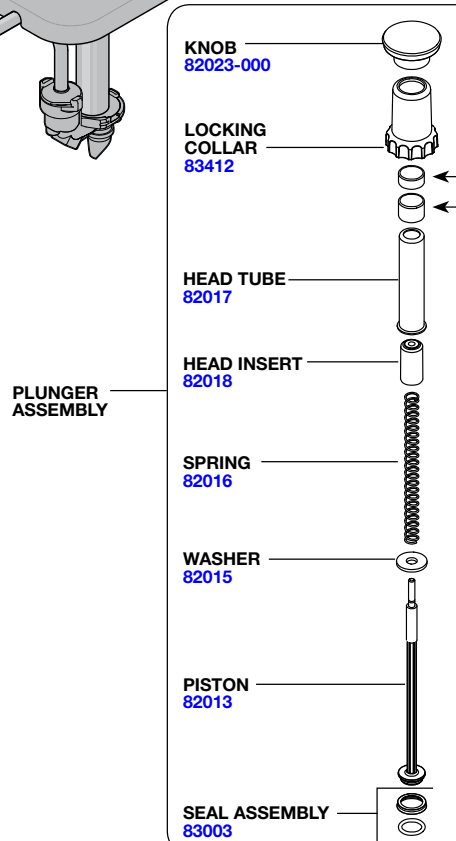
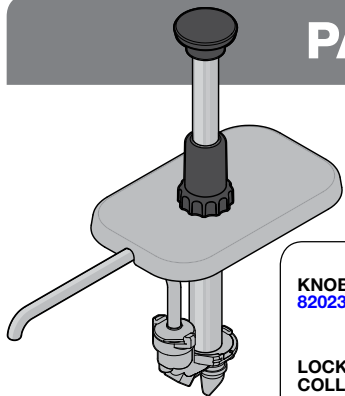


PARTS for PUMP 85820



PORTION CONTROL

PUMP DELIVERS 1 FL OZ PORTIONS

To reduce portion, add GAGING COLLAR(S)

- 83529 SM COLLAR: 1/8 fl oz reduction
- 82022 LG COLLAR: 1/4 fl oz reduction

COLLAR(S) USED	PORTION RESULT
None	1 fl oz
1 Sm	7/8 fl oz
1 Lg	3/4 fl oz
1 Lg + 1 Sm	5/8 fl oz
2 Lg	1/2 fl oz
2 Lg + 1 Sm	3/8 fl oz
3 Lg	1/4 fl oz
3 Lg + 1 Sm	1/8 fl oz

LID
85829

CYLINDER
82362

DISCHARGE TUBE
85827

O-RING, 1"
05127

GASKET
88554

VALVE BODY
82635

FOOD EQUIPMENT LUBRICANT
40179

BRUSH
82049

BRUSH
82526

TROUBLESHOOTING

PROBLEMS WITH FLOW OR PORTIONS?

- Clean pump.
- **Food product** may be too thick or contain a solid that will not pass through pump.
- If used: Ensure **gaging collar(s)** are undamaged and properly installed on head tube.

PLUNGER DOESN'T RETURN TO TOP AFTER DISPENSING?

- Ensure that the **spring** is functional. Replace broken spring if necessary.
- Ensure that the **washer** is installed between the spring and piston head.

FOOD PRODUCT OZES OUT AROUND LOCKING COLLAR?

- Ensure **seal** is properly installed on piston.

TIP: Seal has a slight taper. Install with flat side towards top, flared side down.

LEAKS NEAR THE VALVE BODY?

- Ensure **gasket** is properly installed. Flat side of gasket should face up.

PUMP DRIPS?

- Clean **discharge tube** with supplied brush.
- Inspect all **o-rings**. Replace if damaged.
- **Food product** may be too thin. Visit www.Server-Products.com for more tips.

CAN'T FIND THREADS FOR KNOB?

- Look inside the cylinder.
- If the knob is unscrewed, piston threads retract into the plunger. Press the collar down to expose the threads.

CLEANING

Use dishwashing soap, hot water and nylon brush.

Pump is dishwasher safe.

1 FLUSH & RINSE

all pump surfaces with hot water. Place lower end of pump into container of hot water and operate pump until all remaining product is expelled and only hot water is discharged.

2 DISASSEMBLE & CLEAN

all washable parts with soap and hot water.

USE SUPPLIED BRUSH

to thoroughly clean inside discharge tube and any confined areas.

3 RINSE

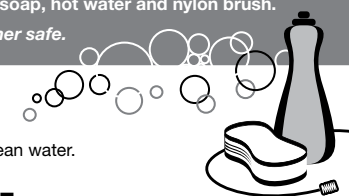
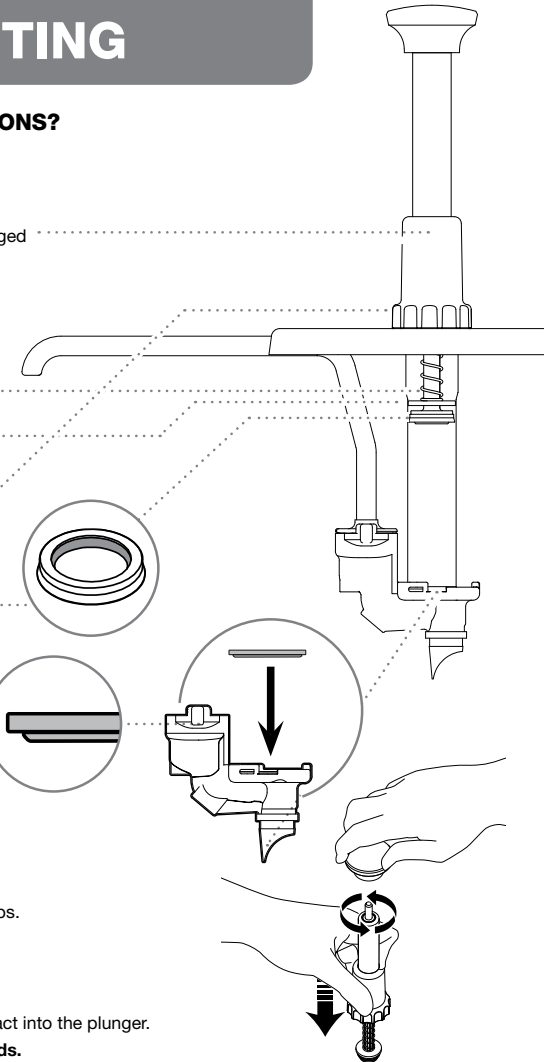
fully with clean water.

4 SANITIZE

all parts according to local sanitization requirements. All parts in contact with food must be sanitized.

5 AIR DRY

all parts fully.



ASSEMBLY

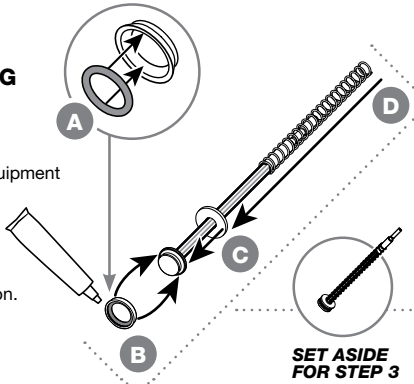
1 PREPARE PISTON

A INSTALL SMALL O-RING
into seal.

B INSTALL SEAL
onto piston head. Apply food equipment
lubricant to outside of seal.
*TIP: Flared end of seal should
face away from piston head.*

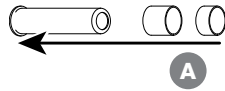
C SLIDE WASHER onto piston.

D SLIDE SPRING onto piston

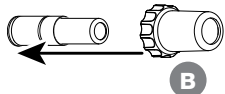


2 PREPARE HEAD TUBE

A OPTIONAL:
ADD GAGING COLLAR(S)
to reduce portion size

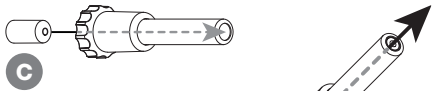


B SLIDE LOCKING COLLAR ON

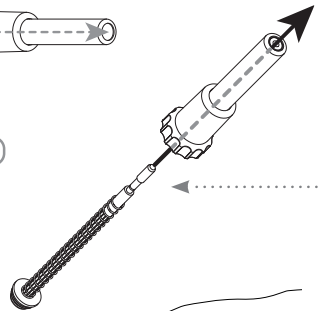


C SLIDE HEAD INSERT
(beveled edge first)
into head tube.

*TIP: The end
with smaller hole
should go in first.*

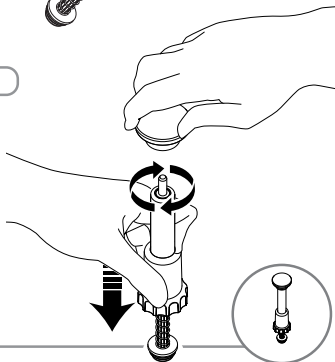


3 INSERT PISTON ASSEMBLY
into head tube assembly.



4 INSTALL KNOB

Press head tube down to compress
spring and expose piston threads.
Rotate knob clockwise to secure.

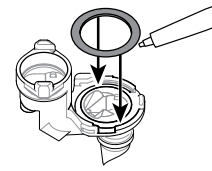


5 INSTALL GASKET

into valve body. Apply food equipment
lubricant on gasket.



*TIP: Flat side of gasket
should face up.*

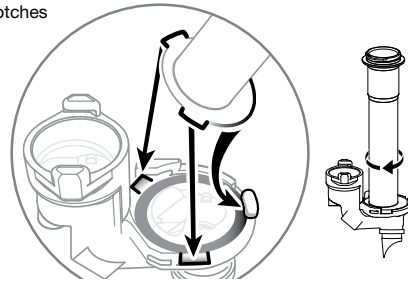


6 INSTALL CYLINDER
onto valve body.

TILT wide edge of cylinder under
nub on rim of valve body.

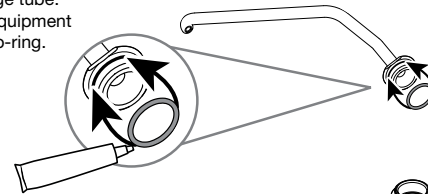
FIT TABS on cylinder into
corresponding notches
in valve body.

PRESS DOWN
firmly and
ROTATE
cylinder
clockwise
to secure
into slots.



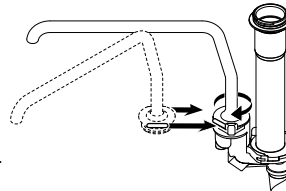
7 INSTALL O-RING

onto discharge tube.
Apply food equipment
lubricant on o-ring.



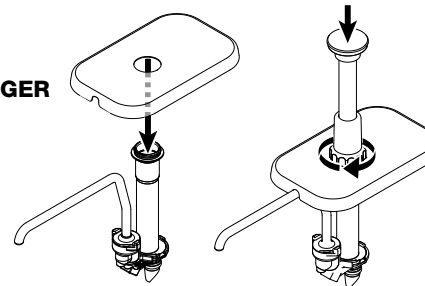
**8 INSTALL
DISCHARGE TUBE**

onto valve body. Rotate
discharge tube clockwise
and press down firmly to
secure into slots on valve body.

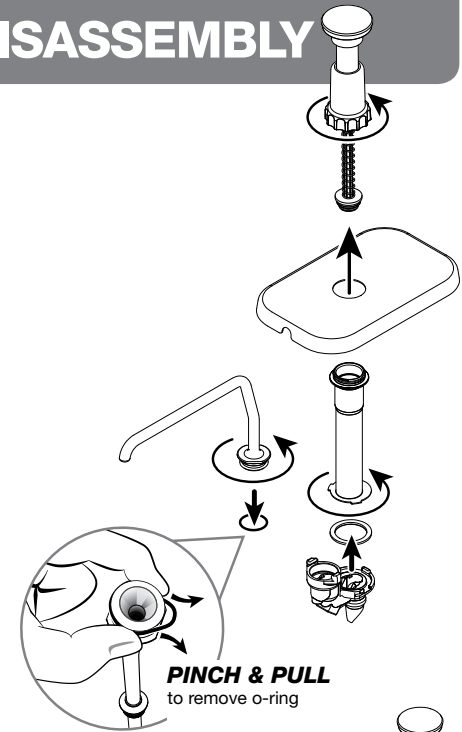


9 INSTALL LID

**10 INSTALL PLUNGER
ASSEMBLY**



DISASSEMBLY



PINCH & PULL
to remove o-ring

