

ECC, MC330 and MC430 Service Parts

This part list contains the service parts for the
The models that are covered include:

MC330
MC430
ECC1200
ECC1400
ECC1800

Voltage codes:

-1 = 115/60/1
-3 = 208-230/60/3
-6 = 230/50/1
-32 = 208-230/60/1

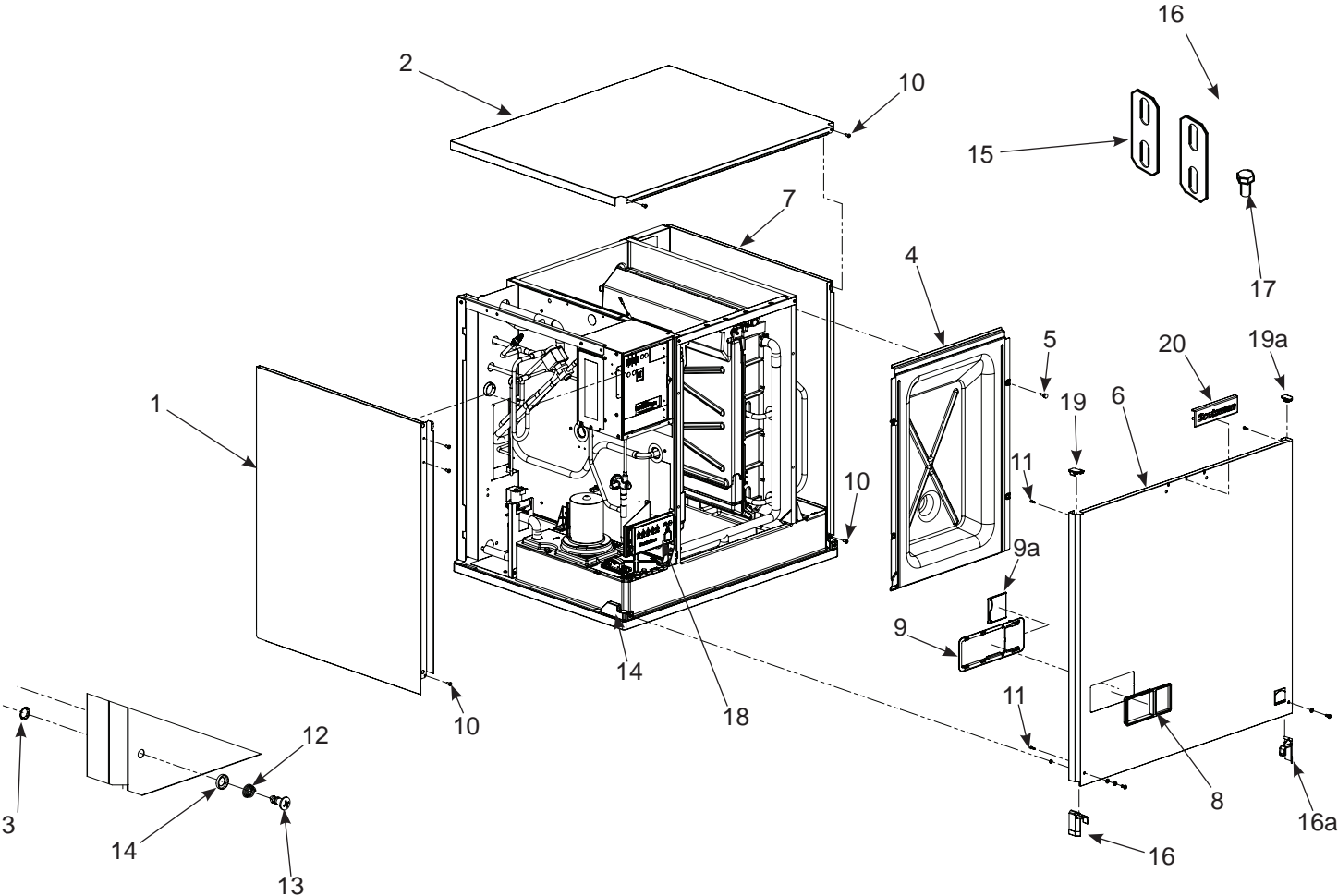
Head voltage is independent of the condensing unit
voltage.

Contents

MC330 Cabinet.....	2
MC430 Cabinet.....	3
Interior Parts.....	4
Refrigeration.....	5
MC330 Evaporator Compartment.....	6
MC430 Evaporator Compartment.....	7
Electrical.....	8
MC330 or MC430 Schematic Diagram.....	9
MC330 or MC430 Wiring Diagram.....	10
ECC Cabinet and Fan.....	11
ECC Refrigeration Components.....	12
ECC Compressors.....	13
ECC1200, ECC1410 and ECC1800 Control Box.....	14
ECC1200 C-E, ECC1410 C.D and ECC1800 C-E Three Phase Wiring Diagram.....	15
ECC1200 C-E, ECC1410 C.D and ECC1800 C-E, Three Phase Schematic Diagram.....	16
ECC1200 E and ECC1410 E Single Phase Wiring Diagram.....	17
ECC1200 E and ECC1410 E Single Phase Wiring Diagram.....	18
ECC1410 E Three Phase Schematic Diagram.....	19
ECC1410 E Three Phase Schematic Diagram.....	20

ECC, MC330 and MC430 Service Parts

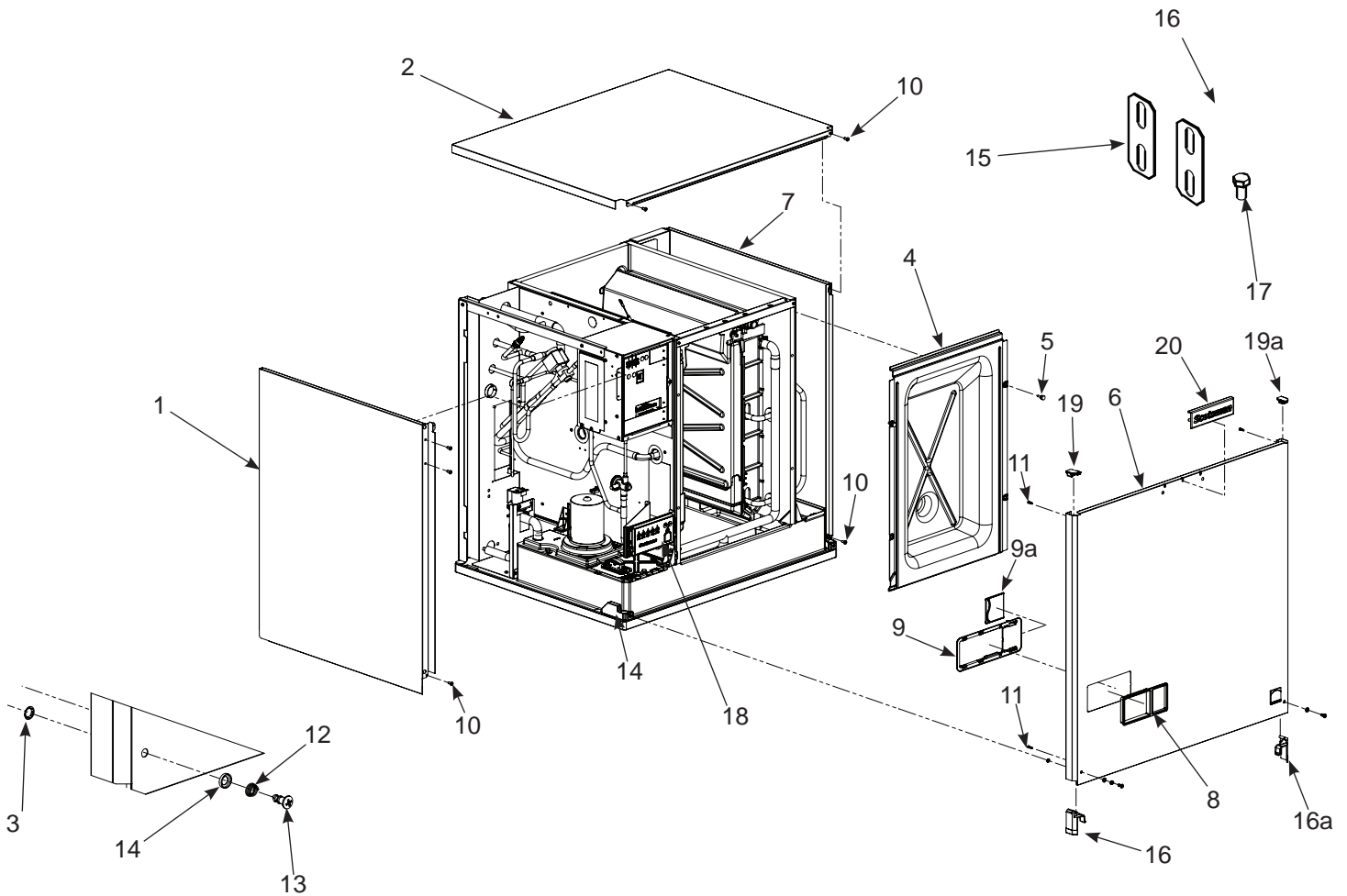
MC330 Cabinet



Item Number	Part Number	Description	Item Number	Part Number	Description
1	A41143-022	Left side panel	11	03-3836-03	Screw #8 X 3/8
2	A41142-026	Top Panel	12	03-1731-03	Spring
3	03-1731-02	Push on retainer	13	03-3838-02	Screw, Front Panel
4	02-4504-01	Inner Front Panel	14	03-1731-04	Cupped washer
5	03-0727-05	Thumbscrew	15	A30911-015	Machine straps
6	A41141-031	Front panel assembly, includes bezel, fasteners and labels	16	02-5141-01	Bottom left corner
7	A41144-021	Right side panel assy	16a	02-5141-02	Bottom right corner
8	02-5142-01	Bezel, outer	17	03-5151-01	Panel mount, left
9	02-5142-02	Bezel With Door	17a	02-5151-02	Panel mount, right
9A	02-5143-02	Door	18	11-0642-01	Membrane switch panel w/harness
10	03-1404-10	Screw #8 X 1/2	19	02-5140-01	Top left corner
			19A	02-5140-02	Top right corner
			20	02-5154-01	Emblem

ECC, MC330 and MC430 Service Parts

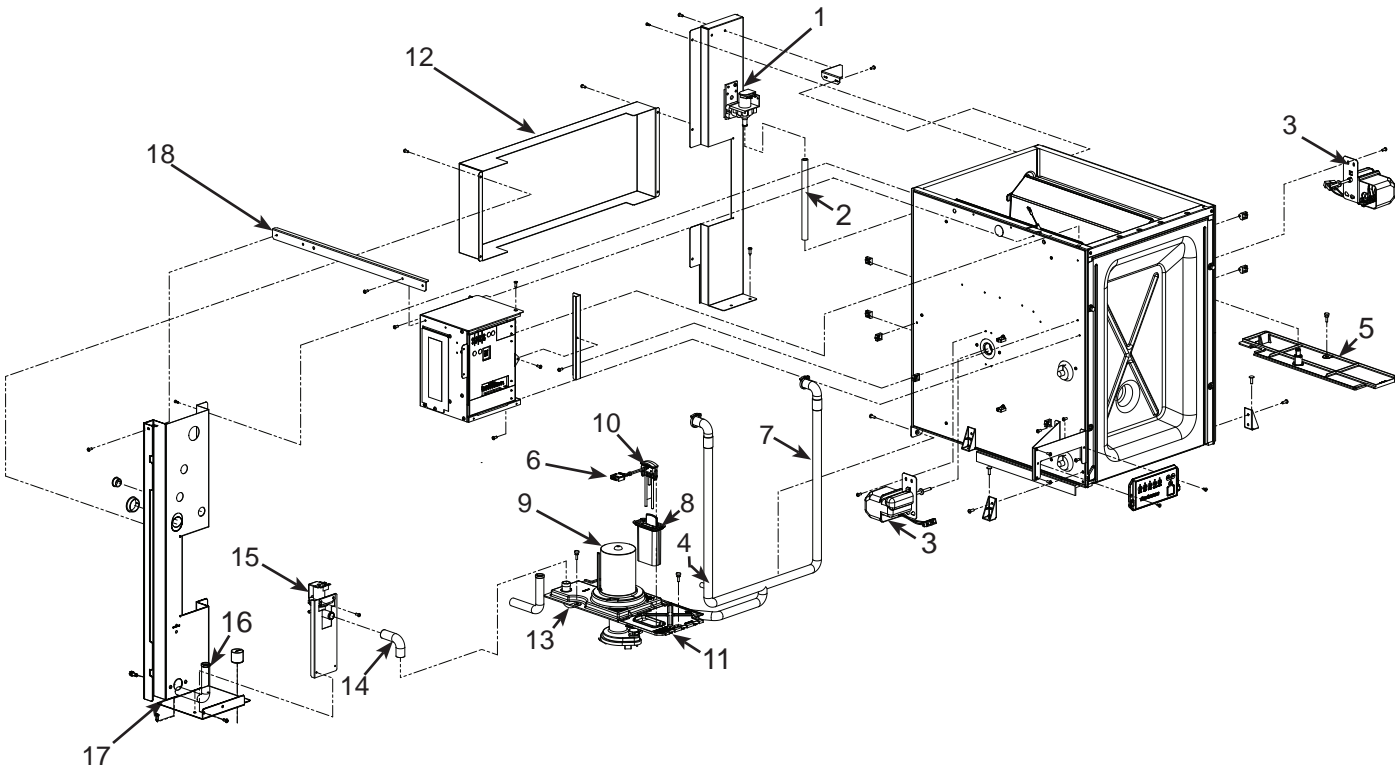
MC430 Cabinet



Item Number	Part Number	Description	Item Number	Part Number	Description
1	A41143-024	Left side panel	11	03-3836-03	Screw #8 X 3/8
2	A41142-026	Top Panel	12	03-1731-03	Spring
3	03-1731-02	Push on retainer	13	03-3838-02	Screw, Front Panel
4	02-4184-01	Inner Front Panel	14	03-1731-04	Cupped washer
5	03-0727-05	Thumbscrew	15	A30911-015	Machine straps
6	A41141-032	Front panel assembly, includes bezel, fasteners and labels	16	02-5141-01	Bottom left corner
7	A41144-022	Right side panel assy	16a	02-5141-02	Bottom right corner
8	02-5142-01	Bezel, outer	17	03-5151-01	Panel mount, left
9	02-5142-02	Bezel With Door	17a	02-5151-02	Panel mount, right
9A	02-5143-02	Door	18	11-0642-01	Membrane switch panel
10	03-1404-10	Screw #8 X 1/2	19	02-5140-01	Top left corner
			19A	02-5140-02	Top right corner
			20	02-5154-01	Emblem

ECC, MC330 and MC430 Service Parts

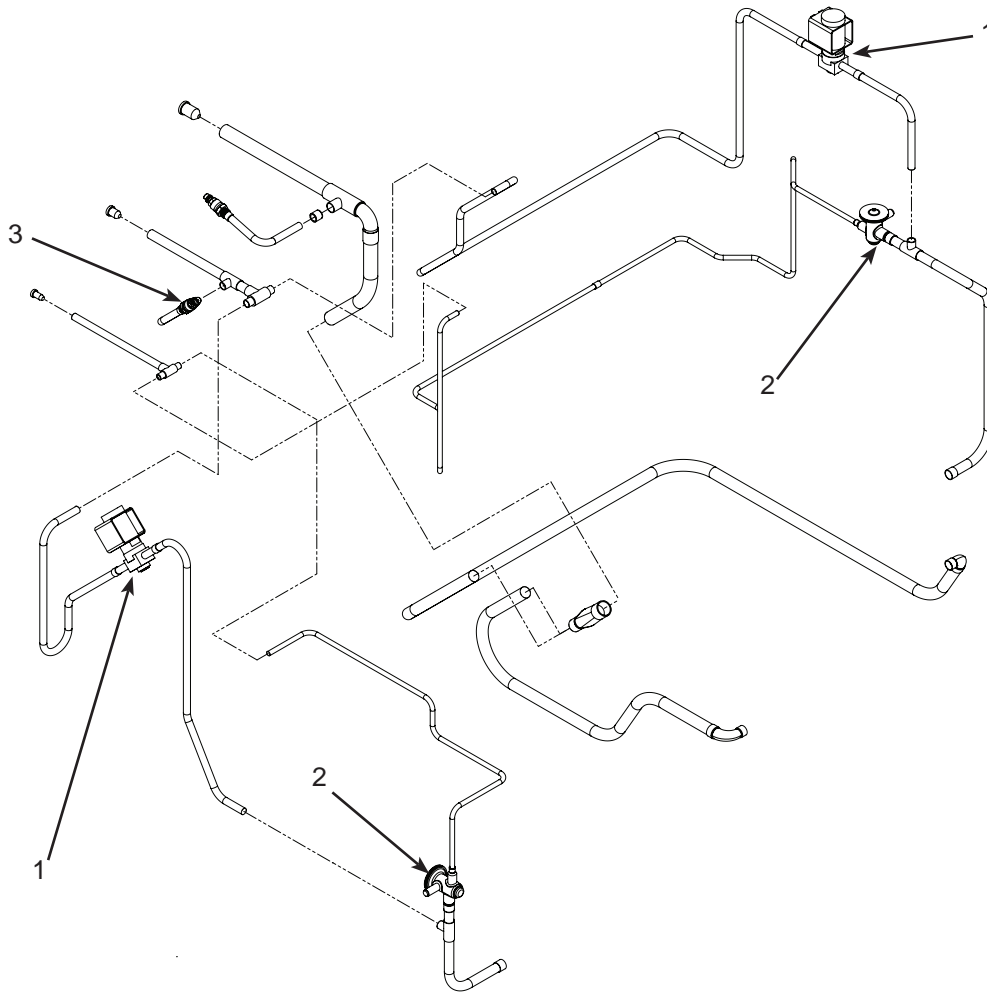
Interior Parts



Item Number	Part Number	Description
1	12-3124-01	Inlet water sol valve
2	13-0674-02	Tubing, order 2 (ft)
3	12-3060-21	Harvest assist
4	11-0572-21	Temp sensor set
5	02-4175-01	Sump cover, rt
6	12-3185-02	WLS harness
7	02-4182-01	Water pump hose, MC430
	02-4505-01	Water pump hose, MC330
8	02-4646-01	WLS cover
9	12-2920-21	Water pump
10	A41192-021	Water level sensor
11	02-4649-01	Sump cover
12	A39497-001	Chase, MC330
	A38796-001	Chase, MC430
13	02-4177-01	Pump bracket
14	A38863-001	Tube
15	11-0564-01	Purge valve
16	A38863-002	Tube, out
17	02-3692-21	Drain fitting (not shown)
18	A40288-001	Brace

ECC, MC330 and MC430 Service Parts

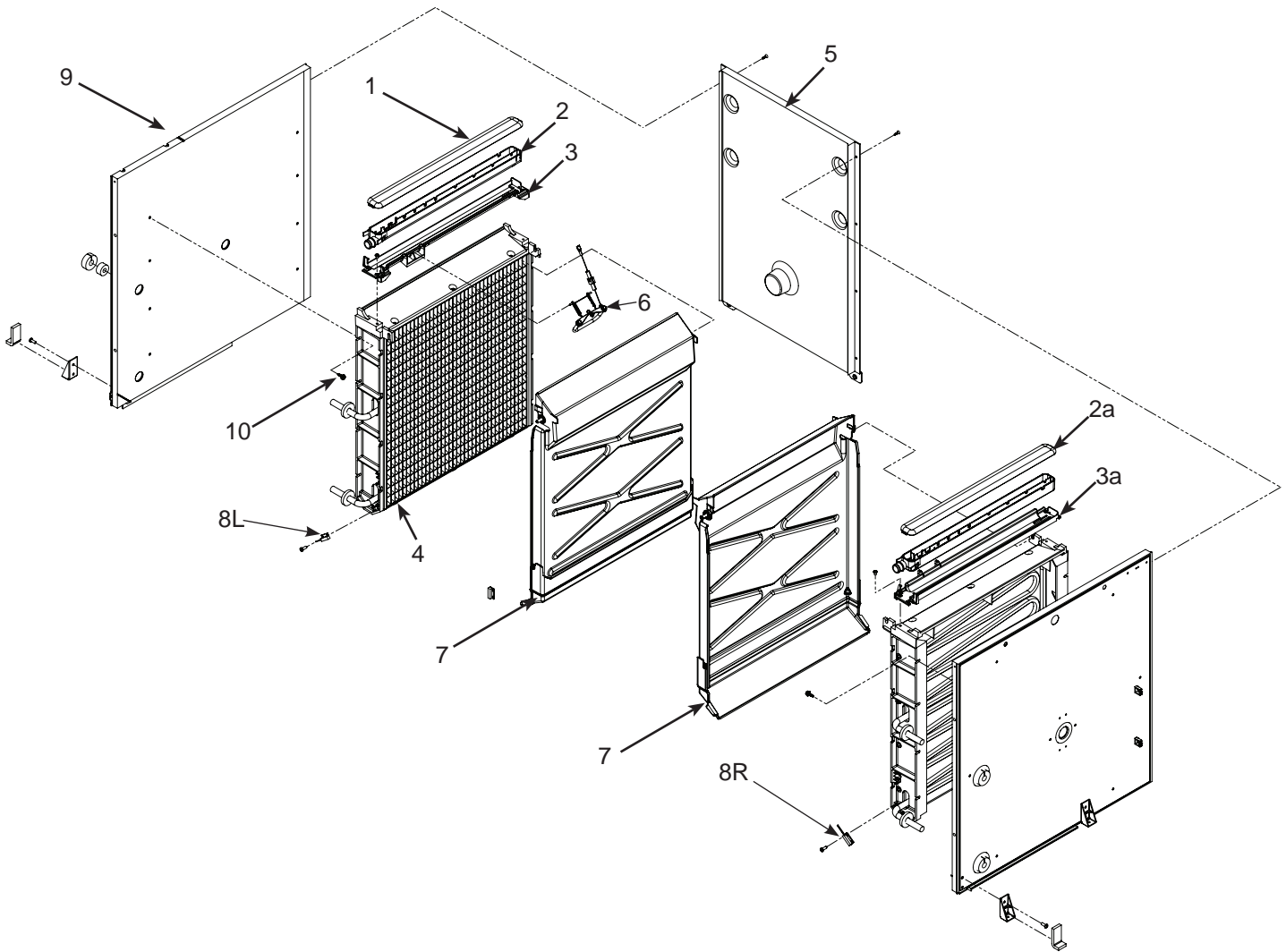
Refrigeration



Item Number	Part Number	Description
1	11-0493-02	Vapor valve
2	16-1130-01	TXV - MC430
	16-1142-01	TXV - MC330
	19-0599-06	Insulation for TXV
3	16-1137-01	Access valve seat
	16-1140-01	Access valve cap
	16-1139-01	Access valve core

ECC, MC330 and MC430 Service Parts

MC330 Evaporator Compartment



Item Number	Part Number	Description
1	02-4065-01	Water distributor cover
2	02-4064-01	Water distributor, left
2a	02-4064-02	Water distributor, right
3	02-4205-01	Mounting bracket, left
3a	02-4205-02	Mounting bracket, right
4	see table	Evaporator
5	A39480-001	Back wall
6	A41191-021	Ice thickness sensor
7	02-4100-32	Curtain
8L	11-0563-06	Curtain switch, left
8R	11-0563-03	Curtain switch, right
9	13-0943-01	Gasket tape
10	03-3868-01	Screw

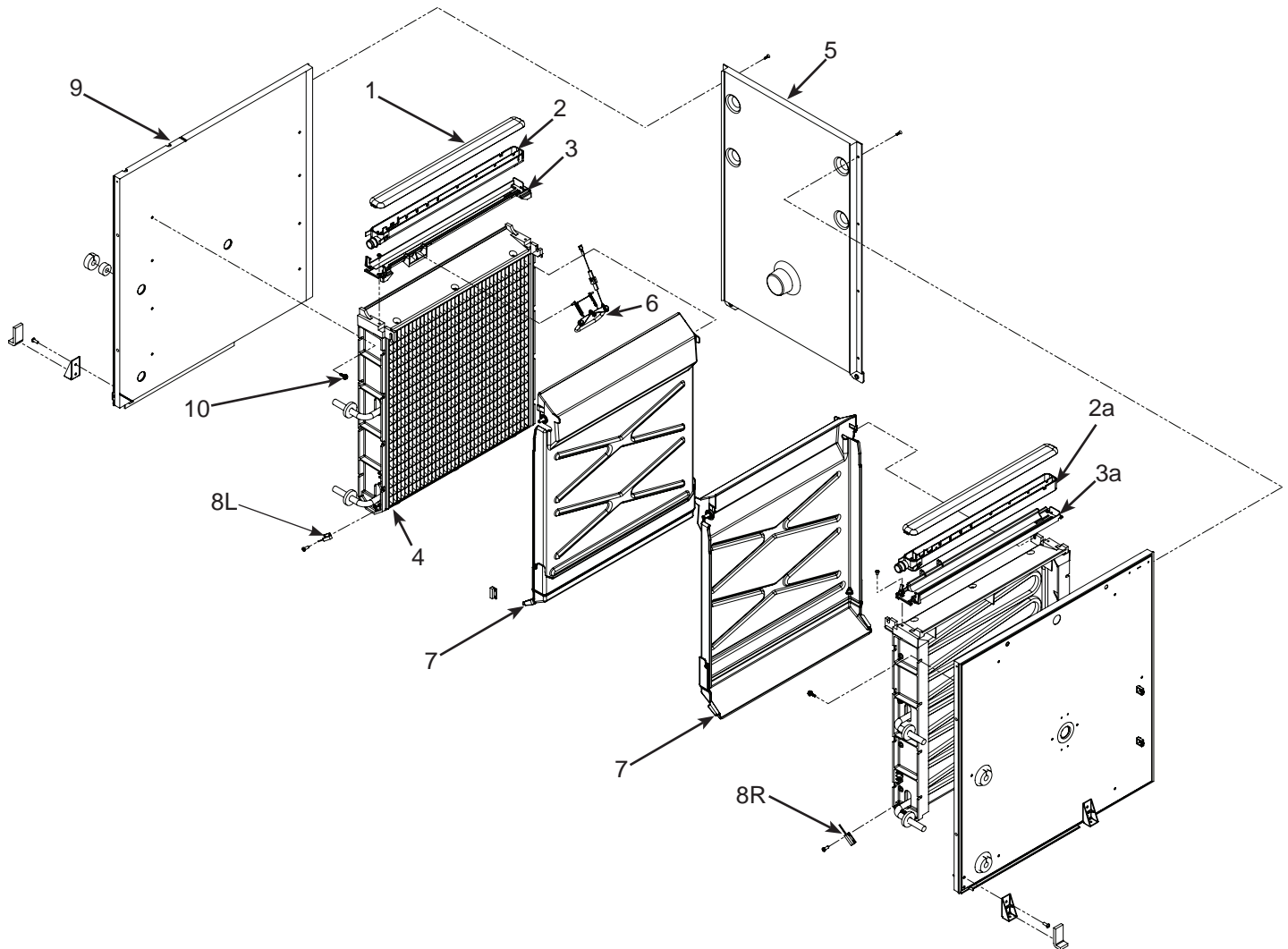
	small cube
Right	A38627-023
Left	A38627-021

5 [A39480-001](#) Back wall

6 [A41191-021](#) Ice thickness sensor

ECC, MC330 and MC430 Service Parts

MC430 Evaporator Compartment

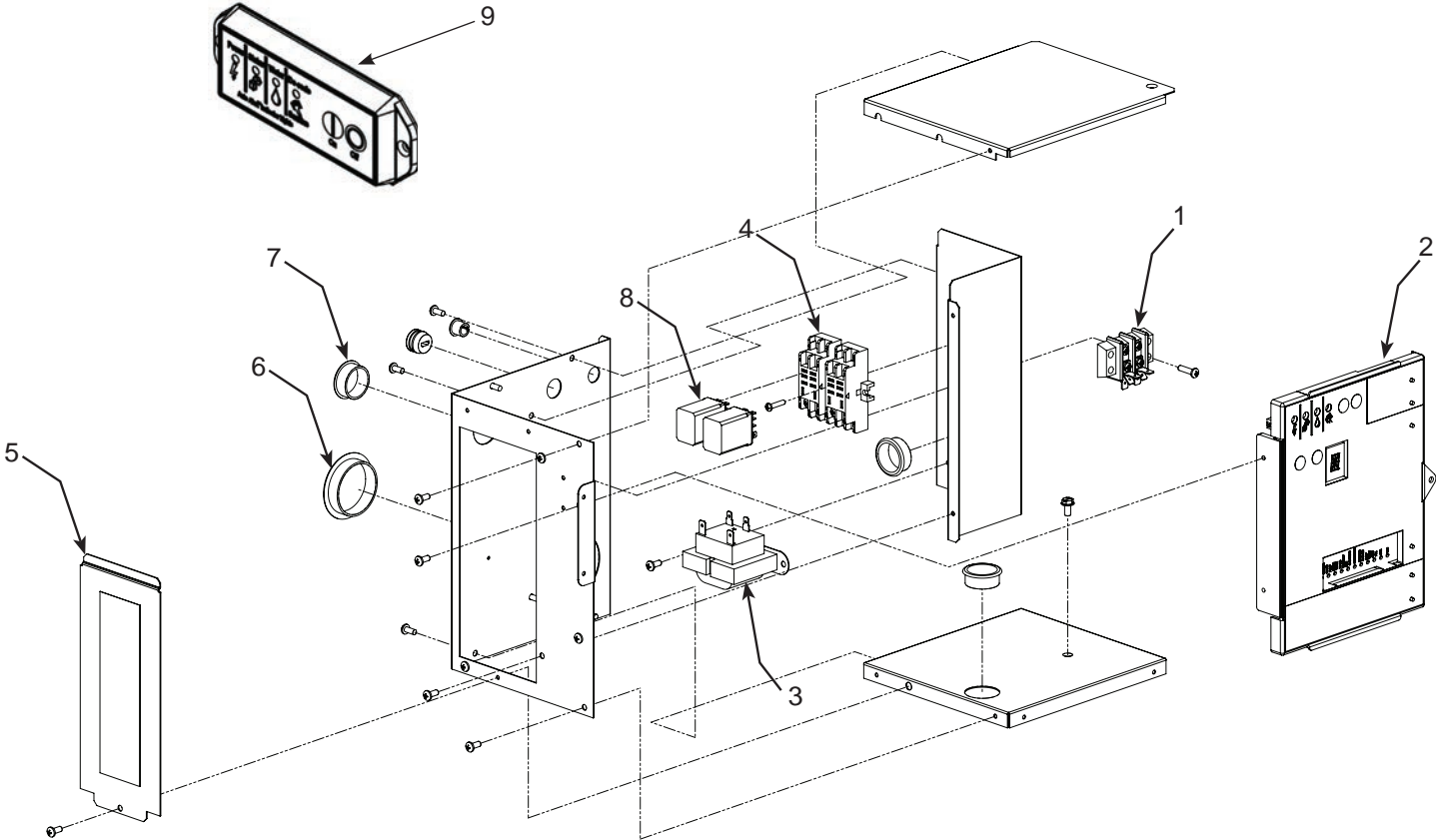


Item Number	Part Number	Description
1	02-4065-01	Water distributor cover
2	02-4064-01	Water distributor, left
2a	02-4064-02	Water distributor, right
3	02-4205-01	Mounting bracket, left
3a	02-4205-02	Mounting bracket, right
4	see table	Evaporator
5	A40312-001	Back wall
6	A41192-021	Ice thickness sensor
7	02-4611-21	Curtain
8L	11-0563-06	Curtain switch, left
8R	11-0563-03	Curtain switch, right
9	13-0943-01	Gasket tape
10	03-3868-01	Screw

	small cube	medium cube
Right	A38628-023	A38628-024
Left	A38628-021	A38628-022

ECC, MC330 and MC430 Service Parts

Electrical



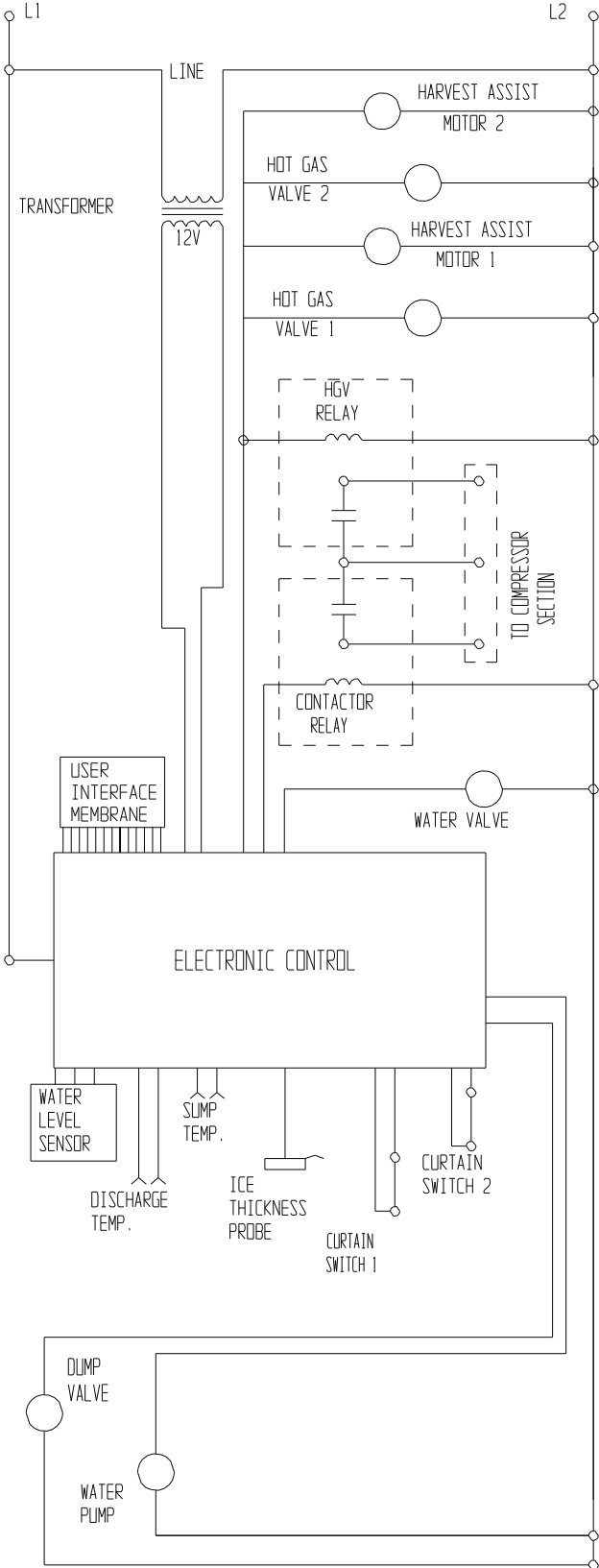
Item Number	Part Number	Description
1	12-2780-01	Terminal strip
2	11-0640-21	Service controller,
3	12-2924-01	Transformer
4	12-2949-02	Relay base
5	A39287-001	Cover
6	12-1213-15	Snap bushing
7	12-1213-11	Snap bushing
8	12-2949-01	Relay
9	11-0642-21	Lower switch panel w/ harness

Not Illustrated:

10	12-2954-01	Low voltage harness - to interconnecting wire
11	12-2943-01	High voltage harness (has large plug)
12	12-2940-01	Control power harness
13	12-1638-19	Power cord

ECC, MC330 and MC430 Service Parts

MC330 or MC430 Schematic Diagram



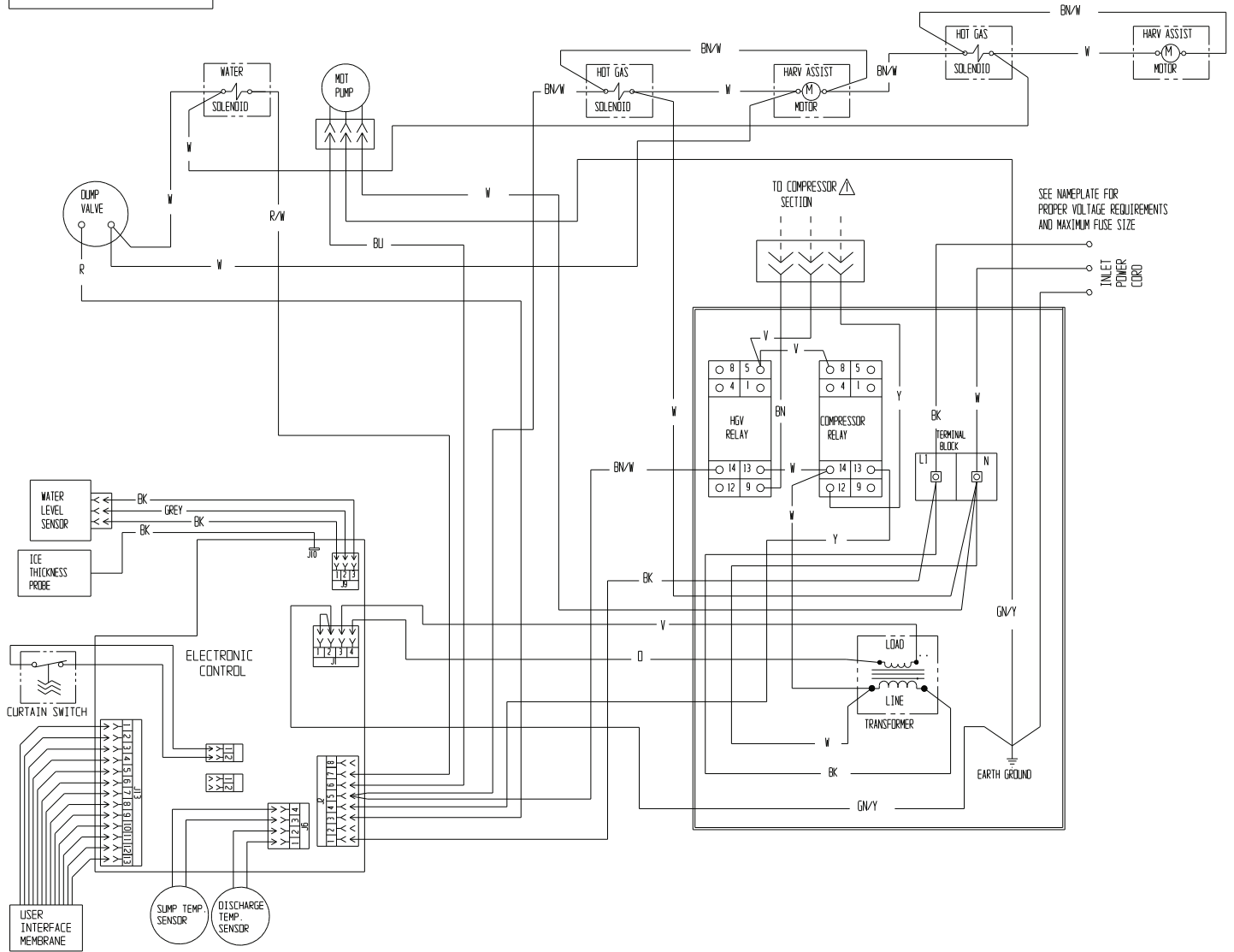
ECC, MC330 and MC430 Service Parts

MC330 or MC430 Wiring Diagram

17-3759-01

△ DASHED LINES INDICATE FIELD WIRING WHICH MUST BE INSTALLED IN ACCORDANCE WITH THE NATIONAL ELECTRICAL CODE AND ALL STATE AND LOCAL CODES.

USE COPPER CONDUCTORS ONLY



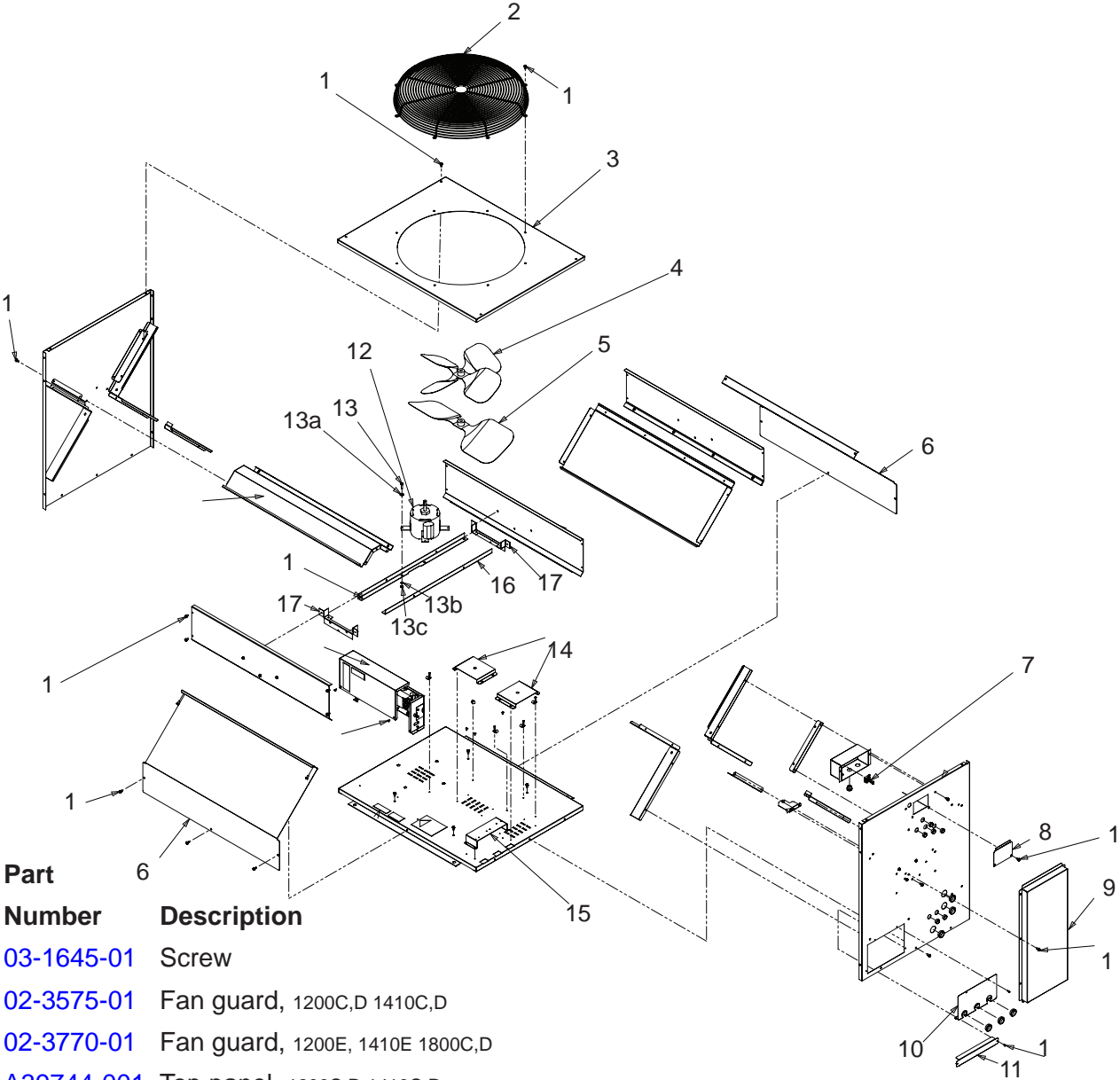
THIS UNIT MUST BE GROUNDED.

CAUTION:

MORE THAN ONE DISCONNECT MEANS MAY BE REQUIRED TO DISCONNECT ALL POWER TO THIS UNIT.

ECC, MC330 and MC430 Service Parts

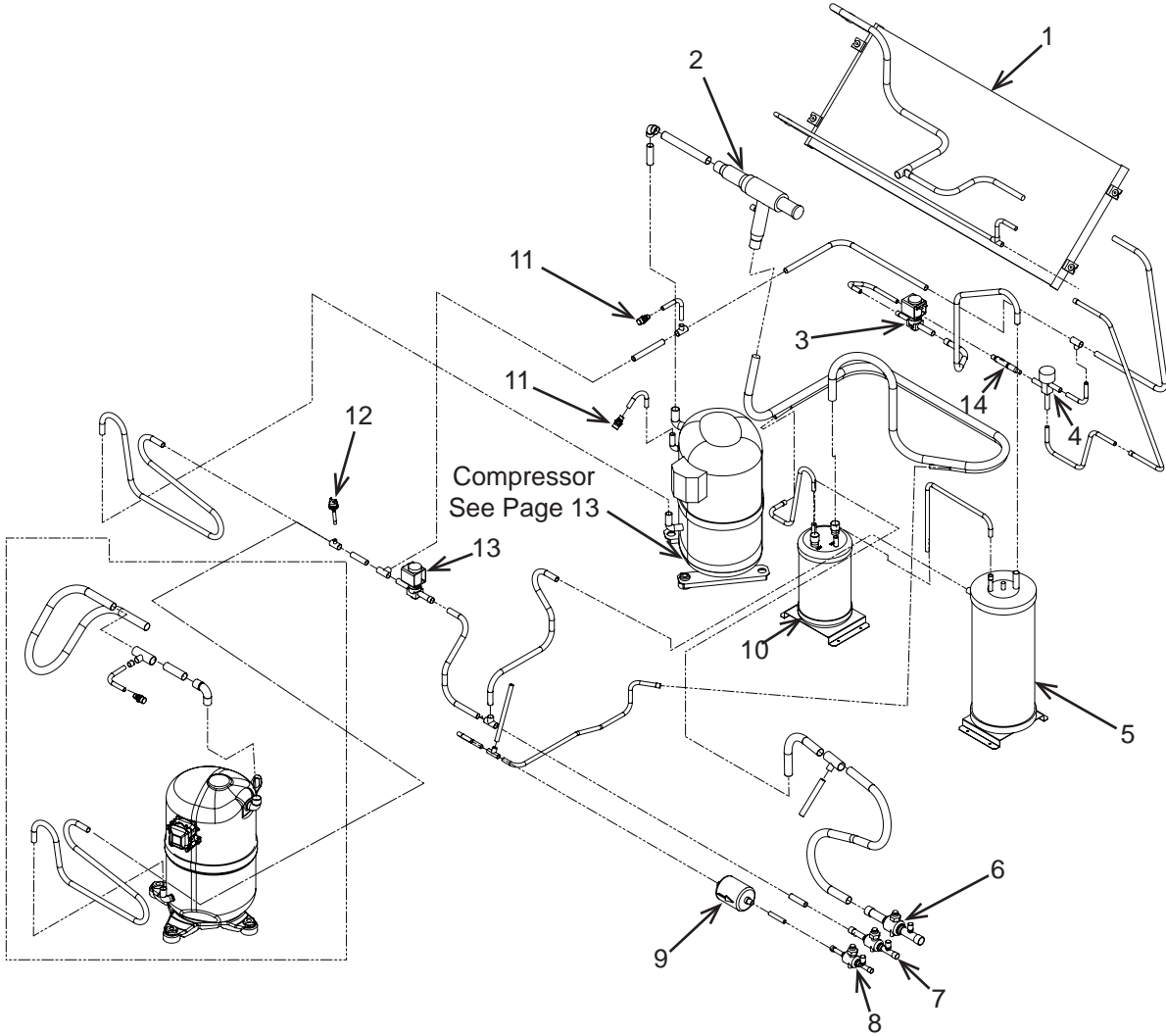
ECC Cabinet and Fan



Item Number	Part Number	Description
1	03-1645-01	Screw
2	02-3575-01	Fan guard, 1200C,D 1410C,D
	02-3770-01	Fan guard, 1200E, 1410E 1800C,D
3	A39744-001	Top panel, 1200C,D 1410C,D
	A39744-002	Top panel, 1200E, 1410E 1800C,D
4	18-8816-01	Fan blade, 1200C,D 1410C,D
5	18-8820-01	Fan blade, 1200E, 1410E 1800C,D
6	A40100-001	Cover
7	12-2640-01	Terminal strip, 50 Hz only
8	A37128-001	Box cover
9	A40091-001	Chase cover
10	A40094-001	Valve cover
11	A40106-001	Lower cover
12	12-2651-03	Fan motor, 1200C,D 1410C,D
	12-3135-01	Fan motor, 1200E, 1410E
	12-2949-04	Fan Relay used on E series
	12-2717-02	Fan motor, 1800C,D
13	03-1405-08	Hex bolt
13a	03-1407-06	Flat washer
13b	03-1410-03	Lock washer
13c	03-1406-08	Nut
14	A37948-001	Bracket
15	A40093-001	Bracket
16	A39749-001	Motor bracket
17	A37282-001	Support

ECC, MC330 and MC430 Service Parts

ECC Refrigeration Components



Item Number	Part Number	Description
1	18-8945-22	Coil
2	16-1096-01	CPR valve
3	11-0546-01	Liquid line inlet valve
4	11-0422-22	Head master valve
5	16-1085-03	Receiver
6	16-1208-03	Ball valve 3/4
7	16-1208-02	Ball valve 1/2
8	16-1208-01	Ball valve 3/8
9	02-3319-02	Dryer
10	16-1157-01	Accumulator, 1200, 1410
	16-1122-01	Accumulator, 1800
11	16-1137-01	Access valve seat
	16-1139-01	Access valve core
	16-1140-01	Access valve cap
12	11-0501-02	High pressure cut out switch
13	11-0507-03	Bypass valve
14	16-1029-01	Check valve

ECC, MC330 and MC430 Service Parts

ECC Compressors

Compressor - see table below

Model	Series	Phase	Hz	Part Number
ECC1200-32		single	60	18-8749-22
ECC1410-32		single	60	18-8726-23
ECC1410-3		three	60	18-8726-25
ECC1800-3		three	60	18-8930-25

Single phase 60 Hz compressors include starting components.

All include a drier.

All have internal overloads

[12-3043-03](#) Crankcase heater for 18-8730-25, [18-8750-22](#) and 18-8726-xx

[18-2308-01](#) Crankcase heater for 18-8749-xx

Mounting parts for compressors:

[18-2300-27](#) Mounting grommet

[18-2300-26](#) Sleeve

03-1406-07 Washer

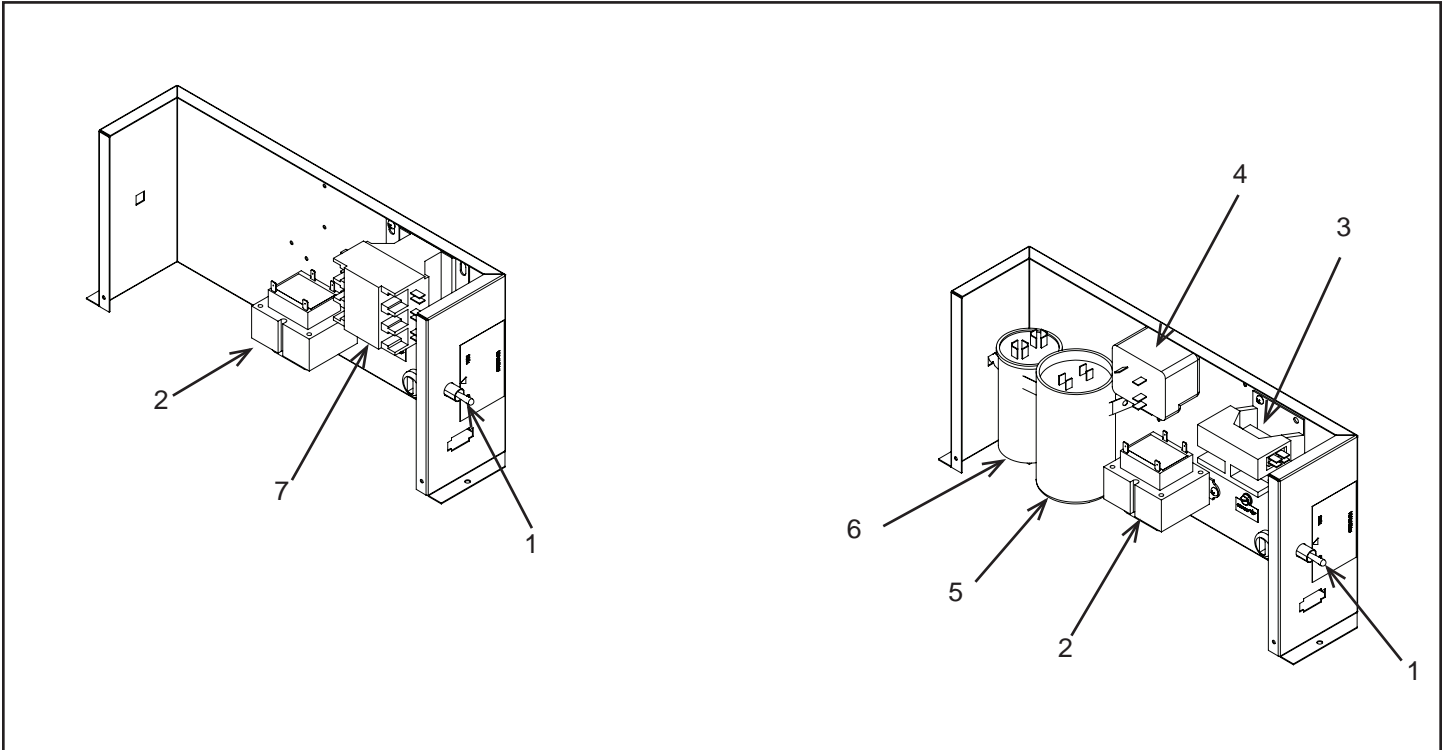
[03-1405-20](#) Cap screw

Parts shipped in condensing unit:

[12-2865-01](#) 75' Interconnecting harness

ECC, MC330 and MC430 Service Parts

ECC1200, ECC1410 and ECC1800 Control Box



Three Phase Control Box

Single Phase Control Box

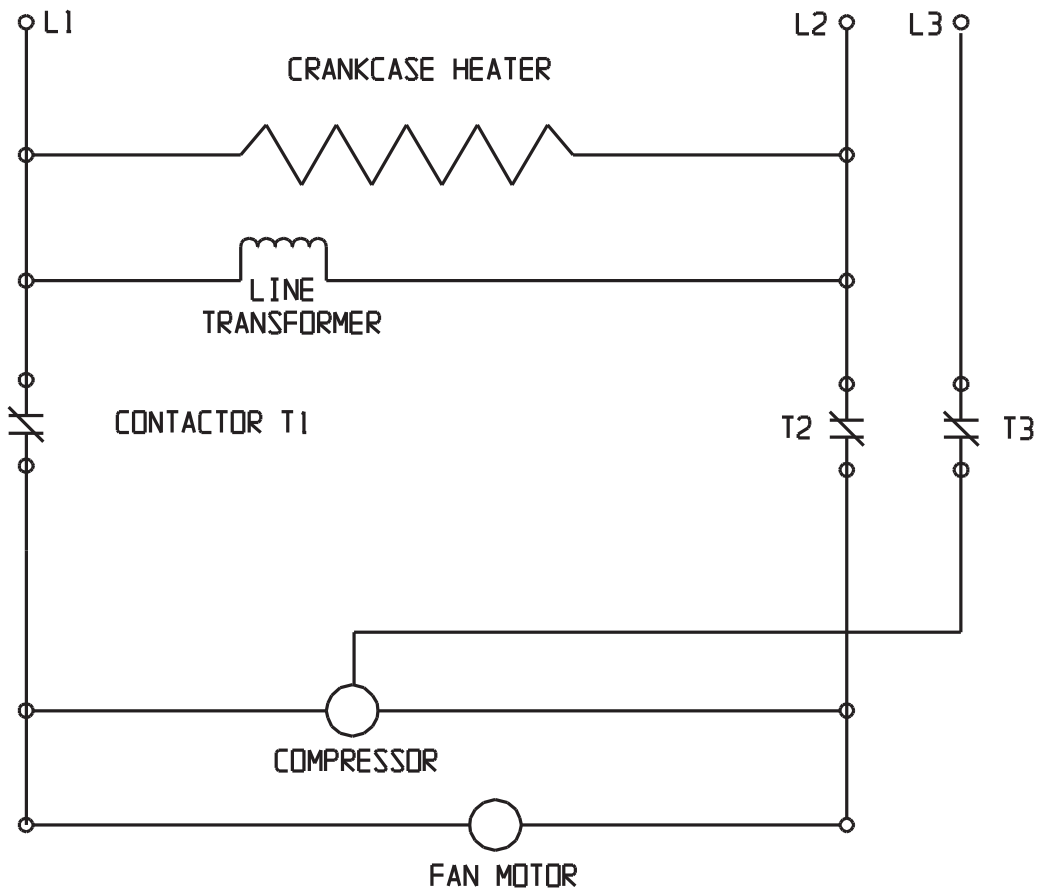
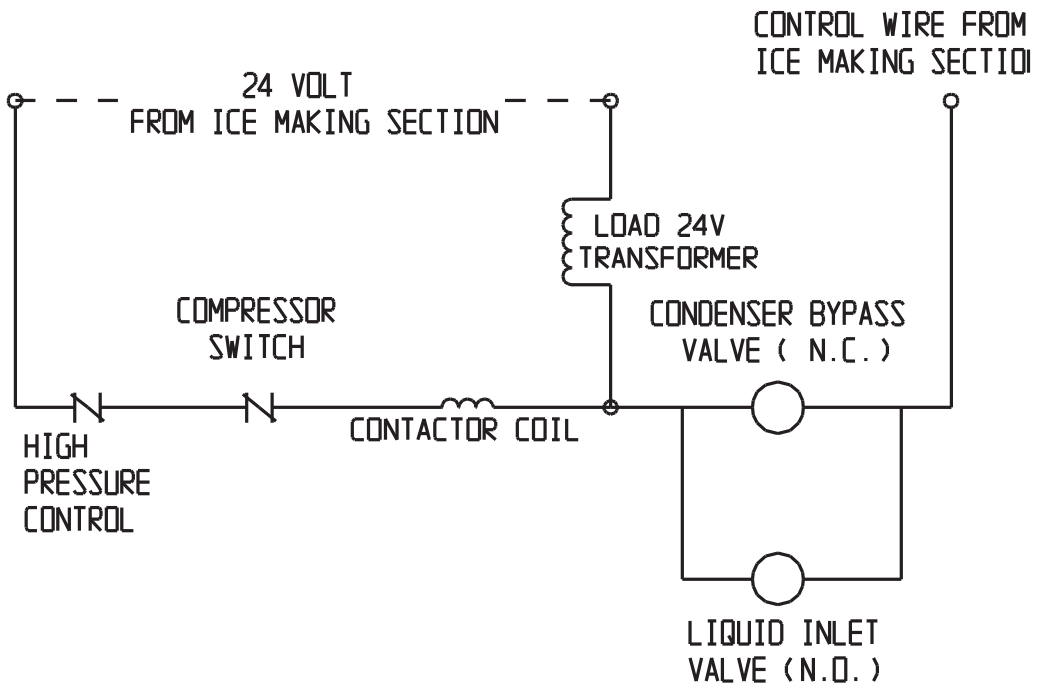
Item Number	Part Number	Description
1	12-2637-01	Toggle switch
2	12-2836-02	Transformer, 60 Hz models 230 volt to 24 volt
3	12-2469-01	Single phase contactor

	Item #4	Item #5	Item #6
	Comp. Relay	Start Capacitor	Run Capacitor
ECC1200-32E	18-1902-70	19-1901-48	18-1903-46
ECC1410-32E	18-1903-33	18-1901-15	18-1902-69

7 [12-2533-01](#) Contactor, 3 phase

ECC, MC330 and MC430 Service Parts

ECC1200 C-E, ECC1410 C.D and ECC1800 C-E, Three Phase Schematic Diagram

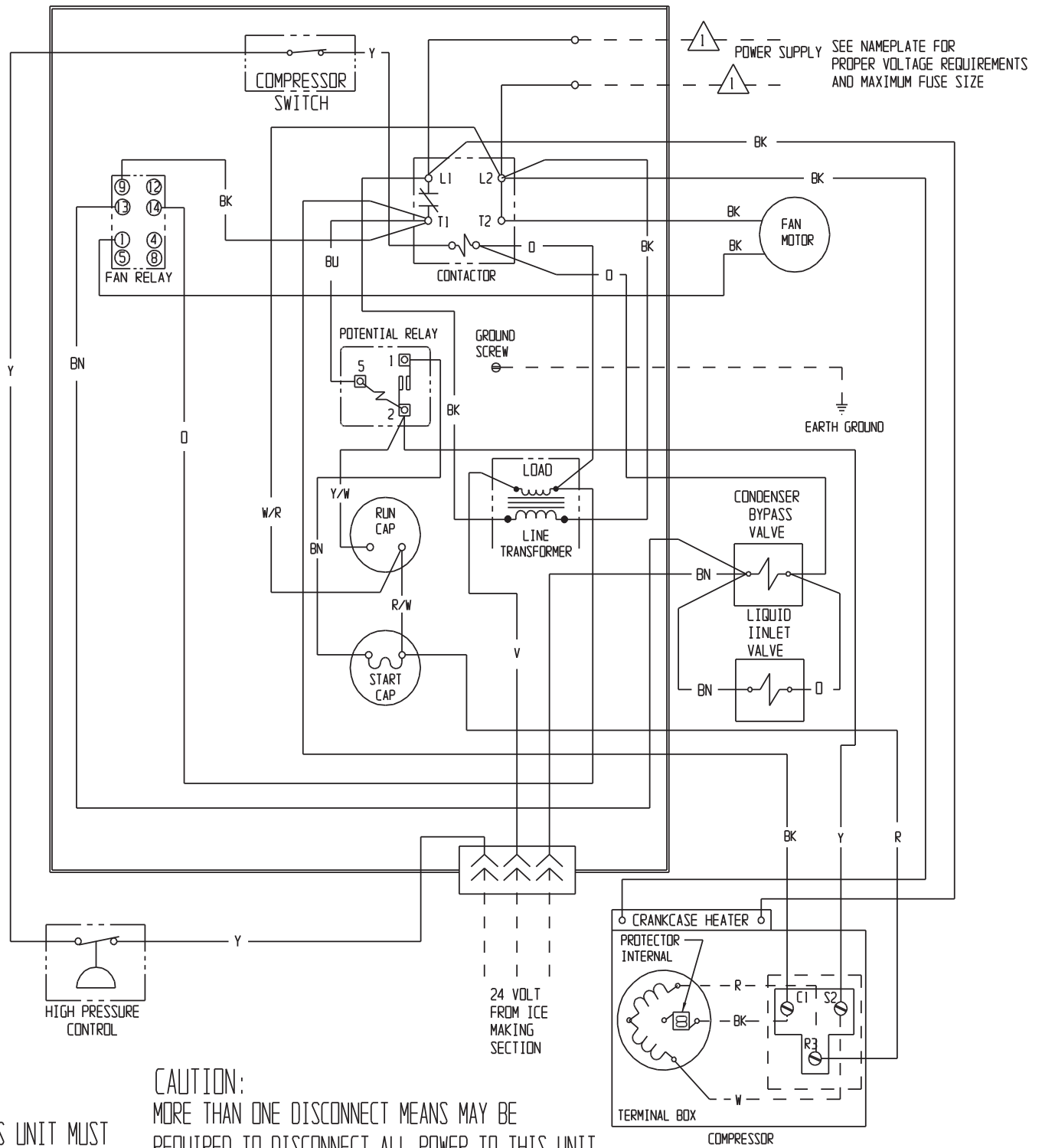


ECC, MC330 and MC430 Service Parts

ECC1200 E and ECC1410 E Single Phase Wiring Diagram

17-3653-01

USE COPPER CONDUCTORS ONLY



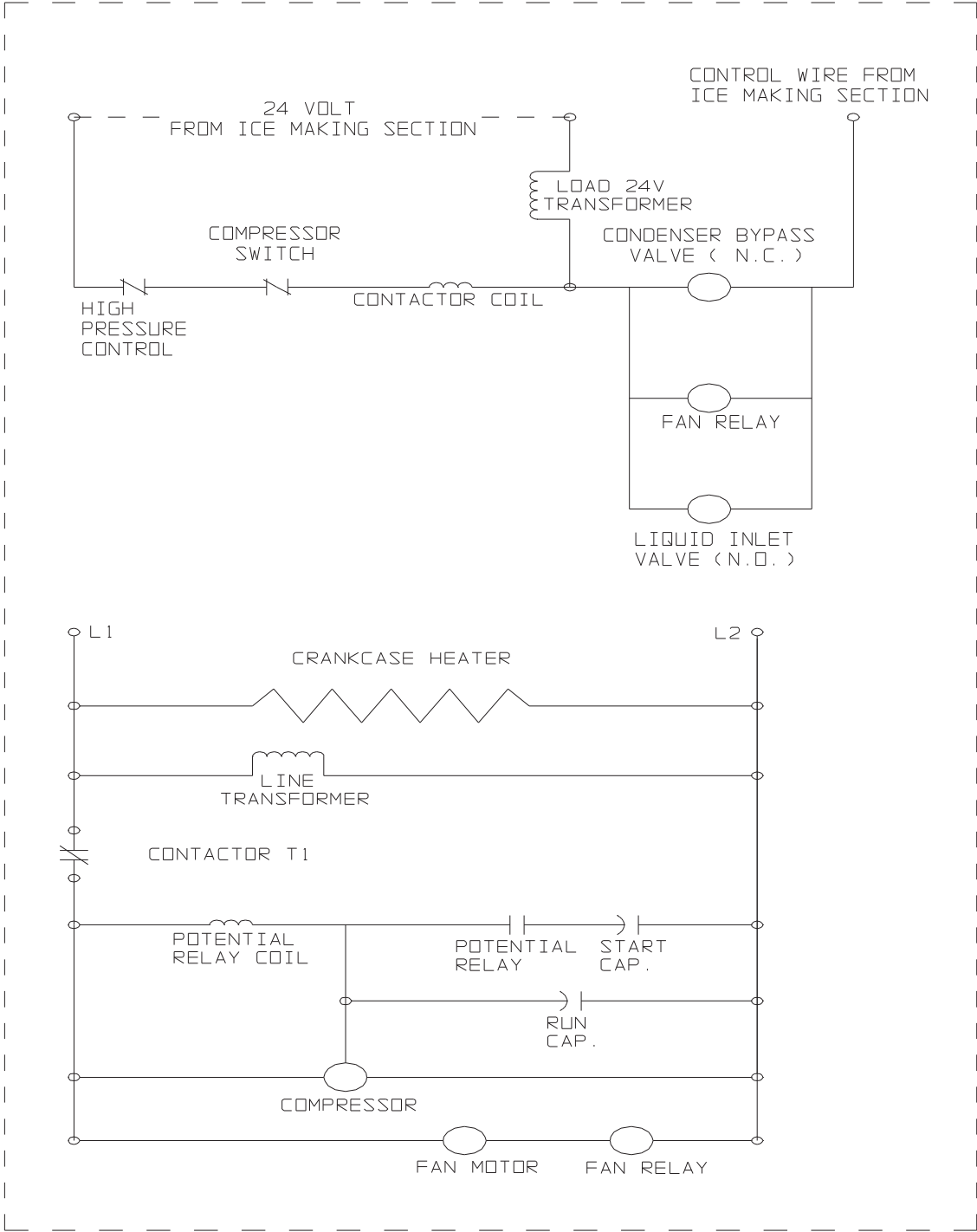
CAUTION:
MORE THAN ONE DISCONNECT MEANS MAY BE
REQUIRED TO DISCONNECT ALL POWER TO THIS UNIT.

THIS UNIT MUST
BE GROUNDED.

ECC, MC330 and MC430 Service Parts

ECC1200 E and ECC1410 E Single Phase Wiring Diagram

⚠ DASHED LINES INDICATE FIELD WIRING WHICH MUST BE INSTALLED IN ACCORDANCE WITH THE NATIONAL ELECTRICAL CODE AND ALL STATE AND LOCAL CODES.

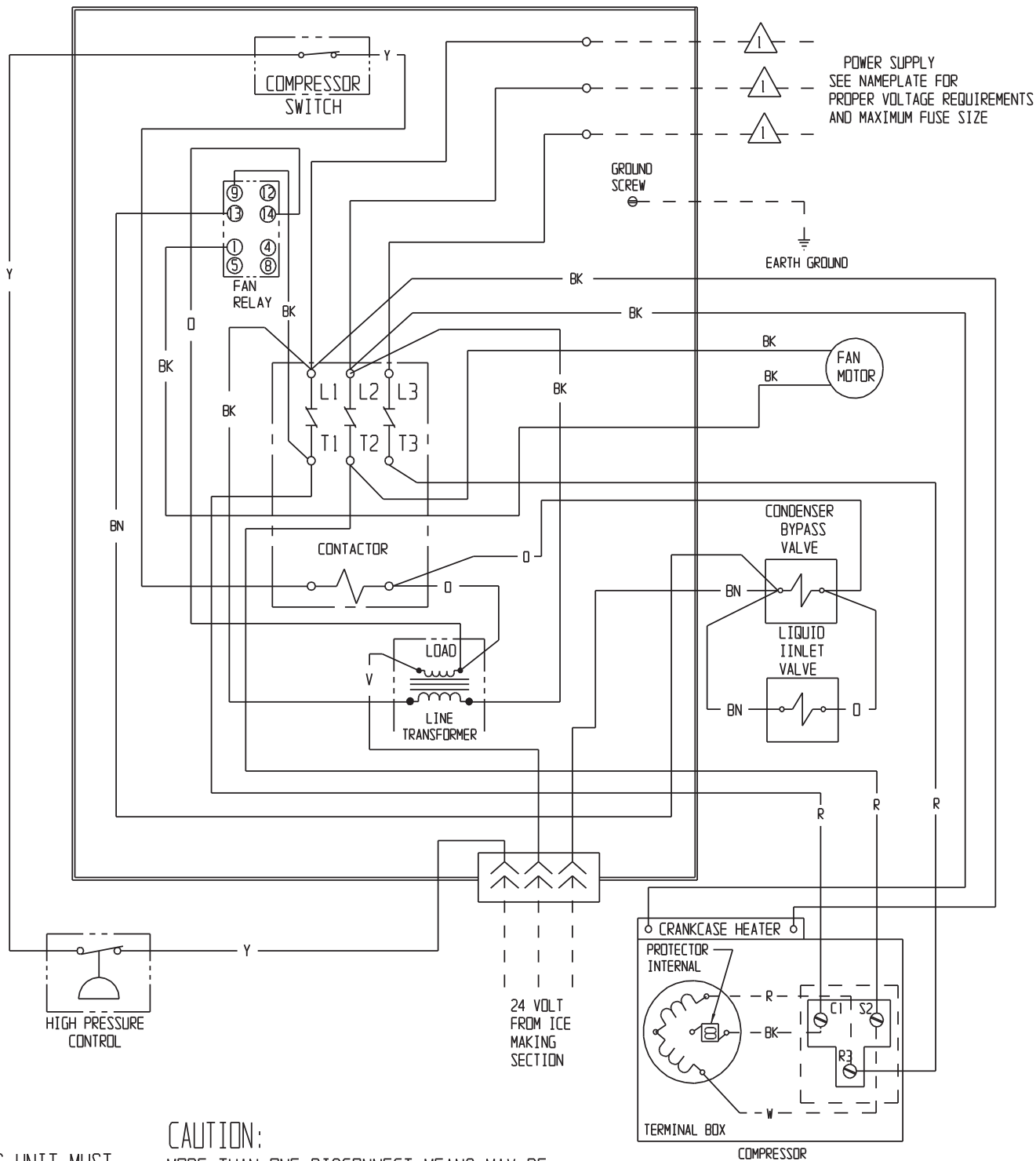


ECC, MC330 and MC430 Service Parts

ECC1410 E Three Phase Schematic Diagram

17-3652-01

USE COPPER CONDUCTORS ONLY



THIS UNIT MUST
BE GROUNDED.

CAUTION:
MORE THAN ONE DISCONNECT MEANS MAY BE
REQUIRED TO DISCONNECT ALL POWER TO THIS UNIT.

ECC, MC330 and MC430 Service Parts

ECC1410 E Three Phase Schematic Diagram

⚠ DASHED LINES INDICATE FIELD WIRING WHICH MUST BE INSTALLED IN ACCORDANCE WITH THE NATIONAL ELECTRICAL CODE AND ALL STATE AND LOCAL CODES.

