



# operator manual

---

## *Panorama Rotisserie Model SP-7*

This document includes:

- Safety Notices
- Specifications
- Installation Instructions
- Operating Instructions
- Cleaning Instructions
- Warranty Statement

Revision: C  
P/N: 19072



Lincoln Foodservice Products, LLC  
1111 North Hadley Road  
Fort Wayne, Indiana 46804  
United States of America  
Technical Support Hotline: (800) 678-9511  
Telephone: (260) 459-8200  
[www.lincolnfp.com](http://www.lincolnfp.com)

## IMPORTANT WARNING AND SAFETY INFORMATION



**NOTE:**

This manual contains important safety and installation-operation instructions. Require all operators to read this manual thoroughly before installing, operating or servicing this equipment. Improper installation, adjustment, alteration, service or maintenance can cause property damage, injury or death.



**NOTE:**

Choose a well ventilated location that will allow for adequate cooling. Place rotisserie on a suitable table or countertop capable of supporting the unit weight of 216 lbs. while insuring that the unit is installed level.



**NOTE:**

Allow ample clearance for air circulation (minimum 6") at the sides of the machine. The rotisserie must be installed with adjustable legs to ensure proper clearance for the underside air intakes.



**WARNING:**

The power supply must be in accordance with the specifications on the data plate located on the lower control panel. It should be installed on a dedicated service line with no other equipment on the circuit.



**DANGER!**

Do not work around unit with long hair, loose clothing, or dangling jewelry. Getting caught in the rotisserie could result in serious injury.



**DANGER!**

For your safety, do not store or use gasoline or other flammable vapors or liquids in the vicinity of this or any other appliance.



**DANGER!**

Do not spray aerosols in the vicinity of this appliance while it is in operation.



**DANGER!**

If the power supply cord appears to be damaged, do not attempt to operate the unit. Contact a service agent or qualified electrician to repair!

## BEFORE INSTALLATION

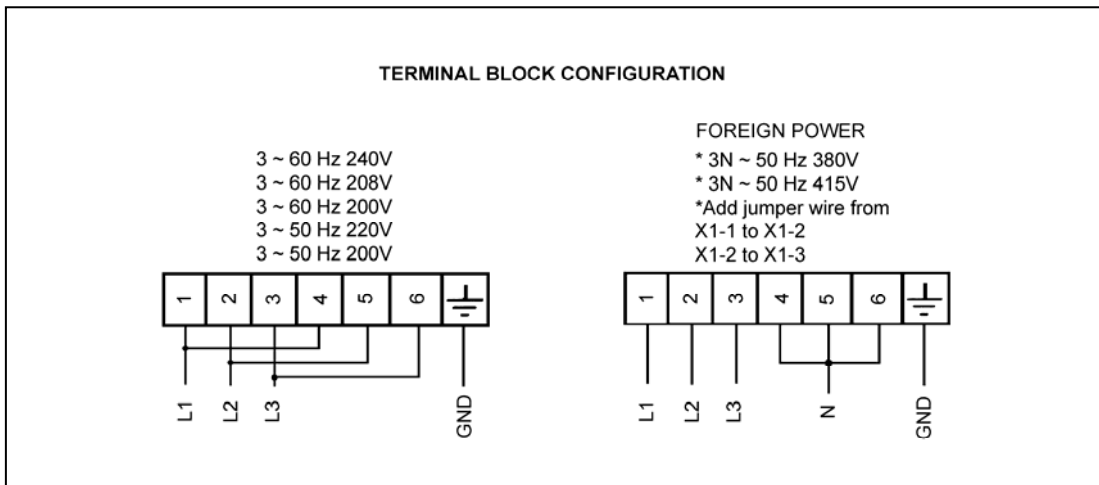
NOTE: Upon receipt of this unit, immediately unpack and inspect for possible concealed shipping damage. If unit is found to be damaged, save all packing materials and contact your delivery carrier within 5 days. Refer to "Shipping Damage Instructions" enclosed for detailed instructions. Failure to follow these instructions will negate Savory's or your ability to file claims and receive compensation for shipping damage.

This manual contains important safety and installation-operation instructions. Require all operators to read this manual before using the unit. Failure to follow the instructions contained in this manual may cause injury, damage to the unit, and will void the warranty.

## INSTALLATION

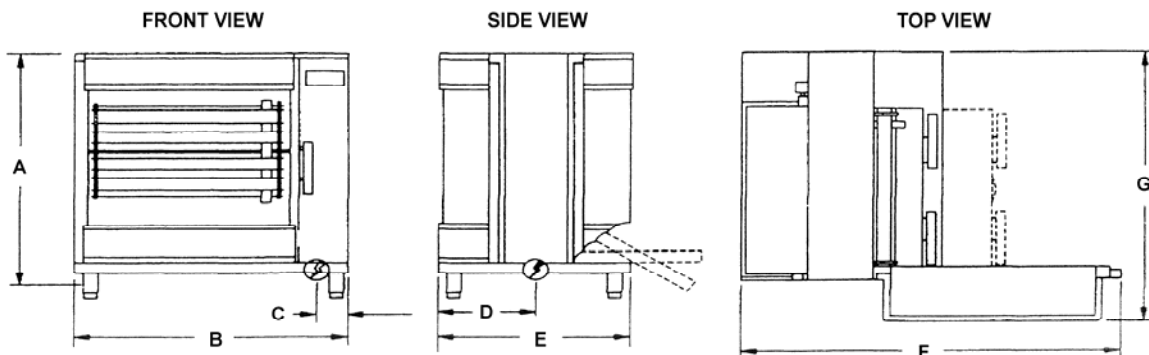
### ELECTRICAL REQUIREMENTS

1. DEDICATED LINE – No other equipment may be connected to this line.
2. CORRECT VOLTAGE – The voltage is specified on the data plate. This is not a dual voltage unit. Check voltage with a meter to ascertain actual voltage (i.e. 208V or 240V).
3. SUPPLY CONNECTION WIRE GAUGE:
  - 208V – 3 Phase – No. 8 AWG with Ground Wire
  - 240V – 3 Phase – No. 10AWG with Ground Wire
  - Wire to be suitable for at least 60° C (140° F)
4. TERMINAL BLOCK CONFIGURATION:

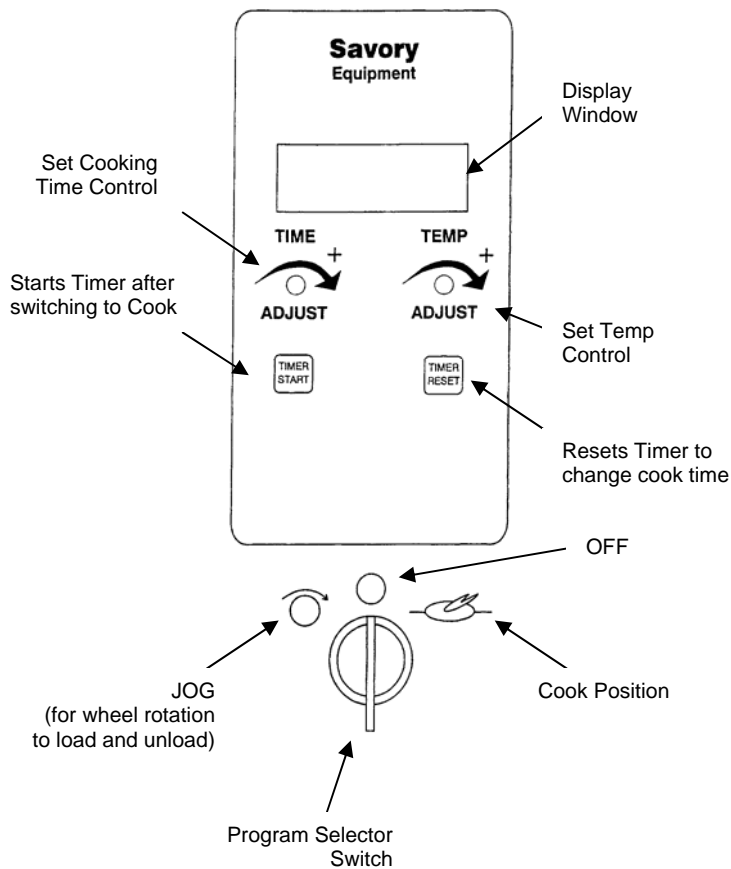


5. LEGS MUST BE LEFT ON THE ROTISSERIE WHEN IT IS INSTALLED. The legs are needed to allow adequate airflow under the unit, which is necessary for proper cooling and operation. Once installed, adjust the legs to level the rotisserie.
6. NO OBSTRUCTIONS under, on top, or around the unit to restrict airflow or cause unsafe conditions.

### MECHANICAL DIMENSIONS

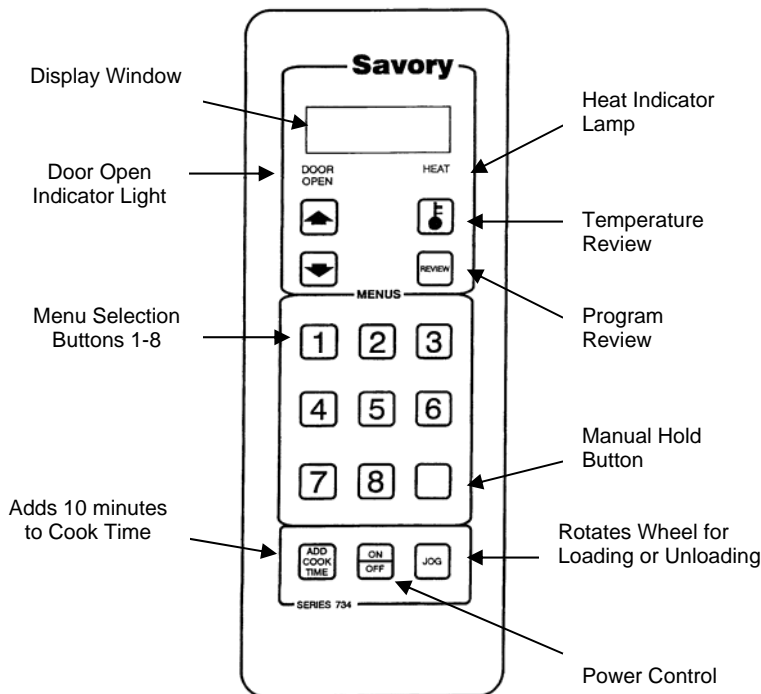


SP-7	A	B	C	D	E	F	G
(inches/cm)	44.25/112.4	39.25/99.7	2/5.1	14.5/36.8	29/73.6	56.5/143.5	45.50/115.6



## STANDARD OPERATION CONTROL PANEL

1. Set switch to "Off Mode."
2. Load rotisserie with product. Set **SELECTOR** switch to "Jog Mode," to jog wheel during loading.
3. Set required cooking temperature by turning the **TEMP ADJUST** knob to the right to raise temperature or left to lower it. (The temperature setting will appear on the right side of the display window and will flash on and off until the oven reaches the set point). To display actual oven temperature, hold in **TIMER START** button for 3 seconds. **NOTE:** Temperature should not be set above 450° F.
4. Set required cooking time by turning the **TIME ADJUST** knob to the right to increase time or to the left to lower it. Allow approximately 10-15 minutes preheat time. (The time setting will appear as minutes and hours on the display.)
5. Start cooking by turning selector switch to "Cook Mode" and press **TIMER START**. (The two dots between hours and minutes will flash on and off when timer is running.) When cooking time is completed, rotisserie will automatically switch to hold mode and will hold product at 175° F. Display window will show how long it has been holding.



## PRE-PROGRAMMABLE CONTROL PANEL

1. Touch ON/OFF button.
2. Load rotisserie with product. Touch **JOG** button to rotate wheel.
3. Touch appropriate **MENU ITEM** (Refer to Menu chart).
4. Rotisserie will start cooking at indicated time and temperature for menu item. When cooking is completed, alarm will sound 15 seconds. To stop alarm, touch **MENU ITEM** button. It will now automatically switch to the **HOLD** mode.
5. To review program for any menu item, touch **REVIEW** button.
6. If additional cooking time is needed, use **ADD COOK TIME** button, which adds 10 minutes at a time.
7. For additional hold time, touch **MANUAL HOLD** button. It is recommended that internal temperature and product condition be checked before more hold time is added.
8. To display actual oven temperature, hold in **TEMPERATURE REVIEW** button for 3-5 seconds.

**PLEASE CALL SAVORY EQUIPMENT IF A MENU ITEM PROGRAM CHANGE IS NEEDED.**

## CHANGING TEMPERATURE MODE

1. Use the key sequence below to enter the Setup Mode.



2. Press the UP or DOWN key to select the desired temperature setting (F or C).



Once desired temperature setting has been set, do not touch any other keys for one minute. After one minute of no key activations, the unit reverts to the Operation Mode.

## CLEANING & MAINTENANCE

**IMPORTANT:** The following cleaning instructions must be carried out to insure satisfactory performance from your Panorama Rotisserie. Neglecting to follow these procedures may result in poorly cooked product, reduced reliability and may void warranty.

### GENERAL CLEANING

AFTER EVERY COOK CYCLE:



**WARNING:** Allow the rotisserie to cool sufficiently to the touch before attempting any cleaning procedures.

1. To avoid the build-up of splatter and grease baking onto the inside of the glass surface, it is important that they be cleaned with a liquid glass cleaner. This should be done after every cooking cycle when these areas have been allowed to cool slightly. **NOTE:** Keeping the glass area clean improves the customer's view of the product being cooked, adding to the appeal.
2. Check the grease pan. If it needs to be emptied, place a suitable collection container at the rear of the rotisserie. Carefully slide out the pan by gently pulling on both handles until the drain plug is positioned directly over the container. Lift out the drain plug from the base of the pan using the pull chain. Once the pan is emptied, replace the drain plug, being careful that it is properly seated to avoid leakage.

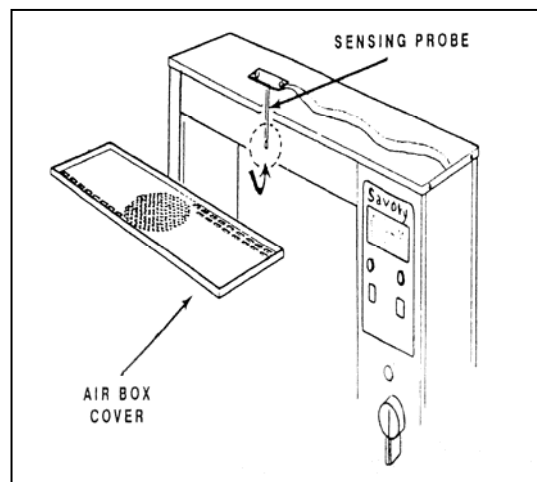
DAILY CLEANING:

1. Upon completion of the last cook cycle of the day, soak the skewers or baskets in warm soapy water for approximately 5 minutes. This will make cleaning easier and faster.
2. Lift out the wheel assembly. (Raise left end from the "cradle" bearing, then lift and pull the right end from the drive coupling.) Place in sink.
3. Carefully note how the two drip trays at the bottom of the cooking chamber are positioned. Each tray is held in place by 2 sets of retaining pins. The trays are inserted under the two pins located innermost, towards the bottom of the cooking chamber and resting on top of the pins (in the notches on the underside of the tray) located outermost in the chamber. With the drip trays properly installed, the 4 innermost pins will be visible. Remove the trays and place in the dishwasher or sink.
4. Slide out grease pan and pour off grease as described above. Place pan in the sink or dishwasher.
5. Wash the disassembled parts with warm soapy water. Rinse with clean water and dry.  
**NOTE:** A stainless steel wool or plastic scouring pad and abrasive cleaner may be used to clean the skewers only.
6. Use a soft cloth or sponge, dampened with warm soapy water, to wash the non-stick coated side panels of the cooking chamber, the inside base of the machine, the underside of the air box cover and the inside of the door frame including the door gasket. It is important that the area on the rotisserie where the door seals when closed be thoroughly cleaned and free from grease.  
**NOTE:** Do not flood the rotisserie with cleaning liquid. Use sparingly. Rinse using a cloth dampened with clean water then dry. Do not use water sprays directly on the rotisserie.
7. Use a glass and surface cleaner to clean the inner and outer glass of both doors. Use a stainless steel cleaner on the exterior metal surface to restore the original luster.
8. Install pan, trays and rotating wheel.

WEEKLY CLEANING:

**Important:** The air box must be cleaned weekly.

1. Open the door and slide the Air Box Cover toward you for removal and cleaning.
2. Clean the grease from the Air Box Cover using a suitable detergent.
3. Wipe down the temperature sensing probe which is shown in the illustration. This must be kept grease-free for proper temperature sensing.
4. **IMPORTANT: AIR BOX MUST BE COMPLETELY DRY BEFORE RE-INSTALLING.**



## TROUBLESHOOTING GUIDE

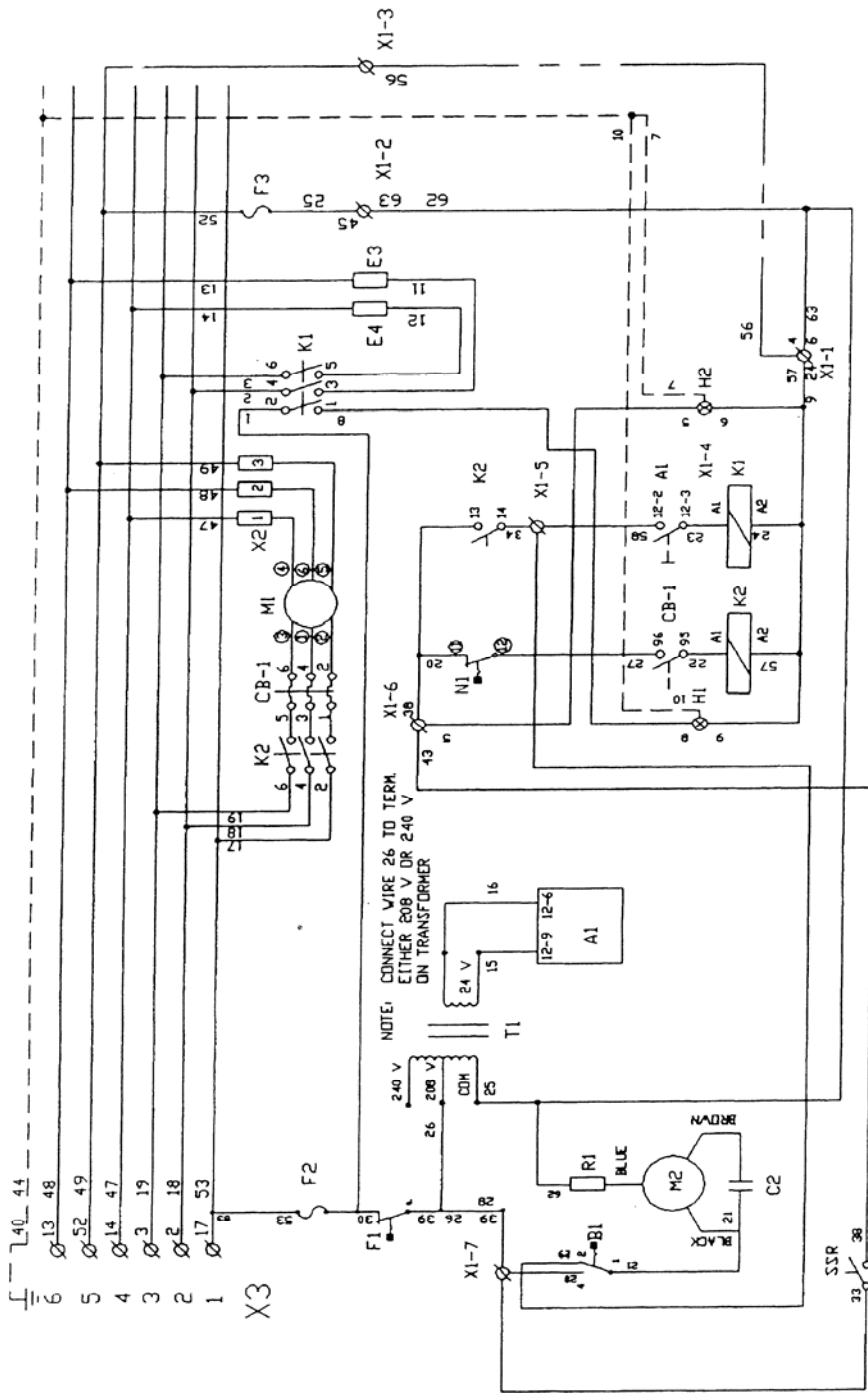
PROBLEM	POSSIBLE CAUSE	CORRECTIVE ACTION
Machine does not operate	No power	Check power source. Verify voltage. Call for service.
Rotisserie does not turn, stops and starts, or does not turn smoothly.	Loaded unevenly. Overloading.	Redistribute weight. Maximum weight: 98 lbs.
Excessive time to reach cooking temperature.	Improper voltage. Temperature sensor probe not clean.	Verify voltage. See Air Box cleaning instructions.
Error Code (F + Number)	Control malfunction,	Call for service.
Product has uneven color (Dark stripes on chicken)	Chicken not cleaned thoroughly.	Clean cavity of chicken.
Product is too dry.	Cooking temperature too high. Held too long.	Reduce temperature and/or time. Reduce hold time.

INTERNAL TEMPERATURE GUIDE	
PRODUCT	INTERNAL TEMPERATURE °F / °C
Poultry	185°F / 85°C
Beef (well)	170°F / 77°C
Pork Beef (medium)	170°F / 77°C
Beef (medium)	160°F / 70°C
Beef (rare)	140°F / 60°C

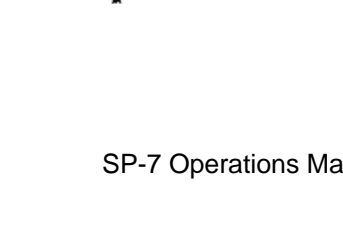
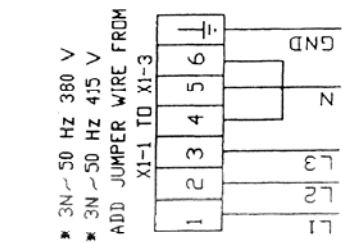
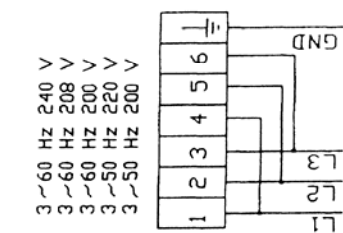
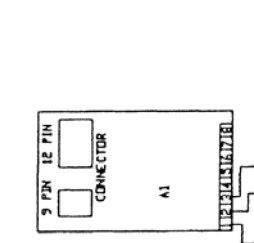
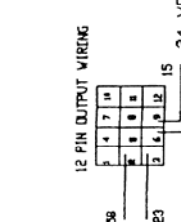
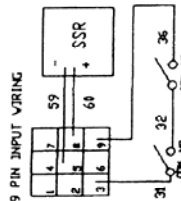
MENU ITEM REFERENCE CHART						
MENU #	PRODUCT	WEIGHT	COOK TEMP	COOK TIME	HOLD TEMP	HOLD TIME
1	35 Chickens	88 lbs. (2.5 lbs. ea.)	350°	1 hour, 35 min.	175°	3 hours
2	28 Chickens	70 lbs. (2.5 lbs. ea.)	350°	1 hour, 25 min.	175°	3 hours
3	17 Chickens	56 lbs. (3 lbs. ea.)	350°	1 hour, 15 min.	175°	3 hours
4	Chicken Parts	30 lbs.	350°	1 hour, 5 min.	175°	2 hours
5	Pork Ribs	16 lbs.	425° then 350°	15 min. then 55 min.	175°	3 hours
6	Beef Ribs	35 lbs.	425° then 350°	20 min. then 75 min.	175°	3 hours
7	Seafood Filet		420°	18 min.	175°	30 min.
8	Casseroles		375°	40 min.	160°	30 min.
	Manual Hold		175°	5 hours		

# WIRING DIAGRAM

(For SP-7 models with pre-programmable control)

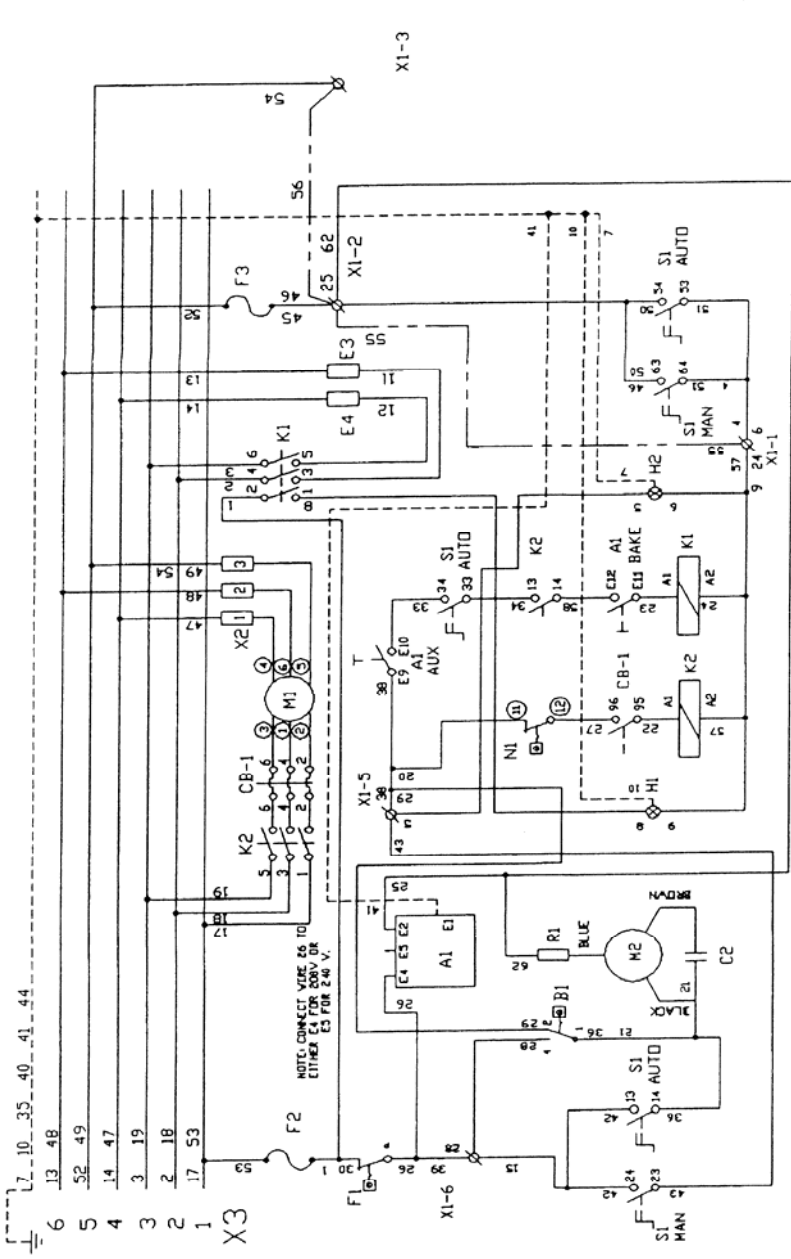


- A1 CONTROLLER
- B1 COOLING THERMOSTAT
- CB-1 OVERLOAD PROTECTION
- CB-2 OVERLOAD PROTECTION
- F1 FUSE
- F2 FUSE
- F3 FUSE
- F4 FUSE
- F5 FUSE
- F6 FUSE
- F7 FUSE
- F8 FUSE
- F9 FUSE
- F10 FUSE
- F11 FUSE
- F12 FUSE
- F13 FUSE
- F14 FUSE
- F15 FUSE
- F16 FUSE
- F17 FUSE
- F18 FUSE
- F19 FUSE
- F20 FUSE
- F21 FUSE
- F22 FUSE
- F23 FUSE
- F24 FUSE
- F25 FUSE
- F26 FUSE
- F27 FUSE
- F28 FUSE
- F29 FUSE
- F30 FUSE
- F31 FUSE
- F32 FUSE
- F33 FUSE
- F34 FUSE
- F35 FUSE
- F36 FUSE
- F37 FUSE
- F38 FUSE
- F39 FUSE
- F40 FUSE
- F41 FUSE
- F42 FUSE
- F43 FUSE
- F44 FUSE
- F45 FUSE
- F46 FUSE
- F47 FUSE
- F48 FUSE
- F49 FUSE
- F50 FUSE
- F51 FUSE
- F52 FUSE
- F53 FUSE
- F54 FUSE
- F55 FUSE
- F56 FUSE
- F57 FUSE
- F58 FUSE
- F59 FUSE
- F60 FUSE
- F61 FUSE
- F62 FUSE
- F63 FUSE
- F64 FUSE
- F65 FUSE
- F66 FUSE
- F67 FUSE
- F68 FUSE
- F69 FUSE
- F70 FUSE
- F71 FUSE
- F72 FUSE
- F73 FUSE
- F74 FUSE
- F75 FUSE
- F76 FUSE
- F77 FUSE
- F78 FUSE
- F79 FUSE
- F80 FUSE
- F81 FUSE
- F82 FUSE
- F83 FUSE
- F84 FUSE
- F85 FUSE
- F86 FUSE
- F87 FUSE
- F88 FUSE
- F89 FUSE
- F90 FUSE
- F91 FUSE
- F92 FUSE
- F93 FUSE
- F94 FUSE
- F95 FUSE
- F96 FUSE
- F97 FUSE
- F98 FUSE
- F99 FUSE
- F100 FUSE

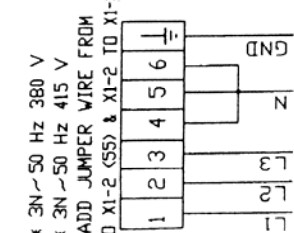
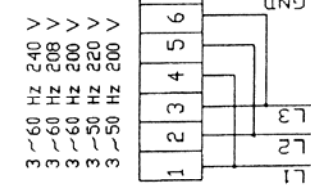
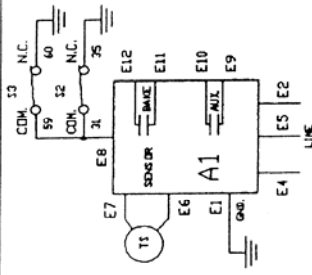


# WIRING DIAGRAM

(For SP-7 models with standard control)



- A1 CONTROLLER
- B1 COOLING THERMOSTAT
- CB-1 MOTOR OVERLOAD BREAKER
- E1-E5 HEATING ELEMENTS
- F1 TEMPERATURE LIMITER
- F2 FUSE
- F3 FUSE
- K1-K2 RELAYS
- M1-M2 MOTORS
- M GRILL MOTOR
- NI NO. 1
- R1 RESISTOR
- S1 SWITCH
- S2-S3 MOTOR SWITCHES
- T1 THERMISTOR
- X1-X2 TERMINAL BLOCKS
- X3 CONNECTION BLOCK



## LIMITED WARRANTY FOR COMMERCIAL PRODUCTS

### LIMITED WARRANTY

Savory LLC, ("Savory") warrants this product to be free from defects in material and workmanship for a period of:

- One (1) year from the date the product is installed or eighteen (18) months from the date of shipment from our facility, whichever comes first.
- Heating elements only – two (2) year warranty against burnout (excluding breakage) from date of shipment from our facility.
- Hot Food Server products only – one (1) year labor, two (2) years parts from the date of shipment from our facility.

During the warranty period, Savory shall, at Savory's option, repair, or replace parts determined by Savory to be defective in material or workmanship, and with respect to services, shall re-perform any defective portion of said services. The foregoing shall be the sole obligation of Savory under this Limited Warranty with respect to the equipment, products, and services. With respect to equipment, materials, parts and accessories manufactured by others, Savory's sole obligation shall be to use reasonable efforts to obtain the full benefit of the manufacturer's warranties. Savory shall have no liability, whether in contract, tort, negligence, or otherwise, with respect to non-Savory manufactured products.

### WHO IS COVERED

This Limited Warranty is available only to the original purchaser of the product and is not transferable.

### EXCLUSIONS FROM COVERAGE

- Repair or replacement of parts required because of misuse, improper care or storage, negligence, alteration, accident, use of incompatible supplies or lack of specified maintenance shall be excluded
- Normal maintenance items, including but not limited to, light bulbs, fuses, gaskets, O-rings, interior and exterior finishes, lubrication, delimiting, broken glass, etc.
- Failures caused by improper or erratic voltages
- Improper or unauthorized repair
- Changes in adjustment and calibration after ninety (90) days from equipment installation date
- This Limited Warranty will not apply to any parts subject to damage beyond the control of Savory, or to equipment which has been subject to alteration, misuse or improper installation, accidents, damage in shipment, fire, floods, power changes, other hazards or acts of God that are beyond the control of Savory.
- This Limited Warranty does not apply, and shall not cover any products or equipment manufactured or sold by Savory when such products or commercial equipment is installed or used in a residential or non-commercial application. Installations not within the applicable building or fire codes render this Limited Warranty and any responsibility or obligations associated therein null and void. This includes any damage, costs, or legal actions resulting from the installation of any Savory commercial cooking equipment in a non-commercial application or installation, where the equipment is being used for applications other than those approved for by Savory.

### LIMITATIONS OF LIABILITY

The preceding paragraphs set forth the exclusive remedy for all claims based on failure of, or defect in, products or services sold hereunder, whether the failure or defect arises before or during the warranty period, and whether a claim, however instituted, is based on contract, indemnity, warranty, tort (including negligence), strict liability, implied by statute, common-law or otherwise, and Savory its servants and agents shall not be liable for any claims for personal injuries, incidental or consequential damages or loss, howsoever caused. Upon the expiration of the warranty period, all such liability shall terminate. THE FOREGOING WARRANTIES ARE EXCLUSIVE AND IN LIEU OF ALL OTHER WARRANTIES, WHETHER WRITTEN, ORAL, IMPLIED OR STATUTORY. NO IMPLIED WARRANTY OF MERCHANTABILITY OR FITNESS FOR PARTICULAR PURPOSE SHALL APPLY. SAVORY DOES NOT WARRANT ANY PRODUCTS OR SERVICES OF OTHERS.

### REMEDIES

The liability of Savory for breach of any warranty obligation hereunder is limited to: (i) the repair or replacement of the equipment on which the liability is based, or with respect to services, re-performance of the services; or (ii) at Savory's option, the refund of the amount paid for said equipment or services.

Any breach by Savory with respect to any item or unit of equipment or services shall be deemed a breach with respect to that item or unit or service only

### WARRANTY CLAIM PROCEDURE

Customer shall be responsible to:

- Immediately advise the Dealer or Savory's Authorized Service Agent of the equipment serial number and the nature of the problem.
- Verify the problem is a factory responsibility. Improper installation or misuse of equipment, are not covered under this Limited Warranty.
- Cooperate with the Service Agency so that warranty service may be completed during normal working hours.
- Travel Time not to exceed two hours and mileage not to exceed one hundred (100) miles.
- Portable equipment weighting less than ninety (90) pounds must be delivered to the Service Agent at Customer's expense.

### GOVERNING LAW

This Limited Warranty shall be governed by the laws of the state of Delaware, USA, excluding their conflicts of law principles. The United Nations Convention on Contracts for the International Sale of Goods is hereby excluded in its entirety from application to this Limited Warranty

Lincoln Foodservice Products, LLC  
1111 North Hadley Road  
Fort Wayne, Indiana 46804  
USA  
www.lincolnfp.com

This page intentionally left blank.

