

MANUFACTURING

NUMBERS:

9400130
9400132
9400134
9400136
9400140
9400142
9400144
9400146
9400150
9400152
9400154
9400156



Antunes Foodservice Equipment

A BRAND OF A.J. ANTUNES & CO.
roundup
ANTUNES FOODSERVICE EQUIPMENT®

WARMER DRAWER

(Without Water Tray)

Models WD-20, WD21A, & WD-35A



P/N 1010889 Rev. A 04/05



WD-20 Shown

Owner's Manual

TABLE OF CONTENTS

Owner Information	2	Equipment Setup	6
General	2	Operation	7
Warranty Information	2	Operating Instructions	7
Service/Technical Assistance	3	Hi-Limit Reset	7
Important Safety Information	3	Maintenance	8
Specifications	5	Cleaning	8
Electrical Ratings	5	Replacing Components	8
Capacity	5	Troubleshooting	9
Shipping Weight	5	Wiring Diagram	10
Electrical Cord & Plug Configurations	5	Replacement Parts – WD-20	11
Dimensions	5	Replacement Parts – WD-21A & 35A	13
Installation	6	Notes	15
Unpacking.....	6	Limited Warranty	Back Cover

OWNER INFORMATION

General

The Roundup Warmer Drawer warms up bread products. Easily adjustable controls allow you to tailor the temperature required for your bread product.

The Warmer Drawers are designed to be used separately, stacked or to fit under the Roundup Hot Dog Corrals.

This manual provides the safety, installation and operating procedures for the Warmer Drawer. We recommend that all information contained in this manual be read prior to installing and operating the unit.

Your Warmer Drawer is manufactured from the finest materials available and is assembled to Roundup's strict quality standards. This unit has been tested at the factory to ensure dependable trouble-free operation.

Warranty Information

Please read the full text of the Limited Warranty in this manual.

If the unit arrives damaged, contact the carrier immediately and file a damage claim with them. Save all packing materials when filing a claim. Freight damage claims are the responsibility of the purchaser and **are not** covered under warranty.

The warranty **does not** extend to:

- Damages caused in shipment or damage as result of improper use.
- Installation of electrical service.
- Normal maintenance as outlined in this manual.
- Malfunction resulting from improper maintenance.
- Damage caused by abuse or careless handling.
- Damage from moisture into electrical components
- Damage from tampering with, removal of, or changing any preset control or safety device.

**IMPORTANT! Keep these instructions for future reference.
If the unit changes ownership, be sure this manual accompanies the equipment.**

OWNER INFORMATION (continued)

Service/Technical Assistance

If you experience any problems with the installation or operation of your unit, contact your local Roundup Authorized Service Agency.

Fill in the information below and have it handy when calling your authorized service agency for assistance. The serial number is on the specification plate located on the unit.

Purchased From: _____

Date of Purchase: _____

Model No.: _____

Serial No.: _____

Mfg. No.: _____

Refer to the service agency directory included with your unit.

Authorized Service Agency

Name: _____

Phone No.: _____

Address: _____

Use only genuine Roundup replacement parts in this unit. Use of replacement parts other than those supplied by the manufacturer will void the warranty. Your Authorized Service Agency has been factory trained and has a complete supply of parts for this unit.

You may also contact the factory at **1-877-392-7854** if you have trouble locating your local authorized service agency.

IMPORTANT SAFETY INFORMATION

Throughout this manual, you will find the following safety words and symbols that signify important safety issues with regards to operating or maintaining the equipment.

WARNING

GENERAL WARNING. Indicates information important to the proper operation of the equipment. Failure to observe may result in damage to the equipment and/or severe bodily injury or death.

CAUTION

GENERAL CAUTION. Indicates information important to the proper operation of the equipment. Failure to observe may result in damage to the equipment.

WARNING

ELECTRICAL WARNING. Indicates information relating to possible shock hazard. Failure to observe may result in damage to the equipment and/or severe bodily injury or death.

WARNING

HOT SURFACE WARNING. Indicates information important to the handling of equipment and parts. Failure to observe caution could result in personal injury.

IMPORTANT SAFETY INFORMATION (continued)

In addition to the warnings and cautions in this manual, use the following guidelines for safe operation of the unit.

- Read all instructions before using equipment.
- For your safety, the equipment is furnished with a properly grounded cord connector. Do not attempt to defeat the grounded connector.
- Install or locate the equipment only for its intended use as described in this manual. Do not use corrosive chemicals in this equipment.
- Do not operate this equipment if it has a damaged cord or plug, if it is not working properly, or if it has been damaged or dropped.
- This equipment should be serviced by qualified personnel only. Contact the nearest Roundup authorized service facility for repair.
- Do not block or cover any openings on the unit.
- Do not immerse cord or plug in water.
- Keep cord away from heated surfaces.
- Do not allow cord to hang over edge of table or counter.

The following warnings and cautions appear throughout this manual and should be carefully observed.

- Turn the unit off, disconnect the power source and allow unit to cool down before performing any service or maintenance on the unit.

- The procedures in this chapter may include the use of chemical products. These chemical products will be highlighted with bold face letters followed by the abbreviated HCS (Hazard Communication Standard). See Hazard Communication Standard manual for the appropriated Material Safety Data Sheets (MSDS).
- The unit should be grounded according to local electrical codes to prevent the possibility of electrical shock. It requires a grounded receptacle with separate electrical lines, protected by fuses or circuit breaker of the proper rating.
- All electrical connections must be in accordance with local electrical codes and any other applicable codes.
- **WARNING ELECTRICAL SHOCK HAZARD. FAILURE TO FOLLOW THESE INSTRUCTIONS COULD RESULT IN SERIOUS INJURY OR DEATH.**
 - Electrical ground is required on this appliance.
 - Do not modify the power supply cord plug. If it does not fit the outlet, have a proper outlet installed by a qualified electrician.
 - Do not use an extension cord with this appliance.
 - Check with a qualified electrician if you are in doubt as to whether the appliance is properly grounded.

WARNING

ELECTRICAL SHOCK HAZARD. FAILURE TO FOLLOW THE INSTRUCTIONS IN THIS MANUAL COULD RESULT IN SERIOUS INJURY OR DEATH.

- Electrical ground is required on this appliance.
- Do not modify the power supply cord plug. If it does not fit the outlet, have a proper outlet installed by a qualified electrician.
- Do not use an extension cord with this appliance.
- Check with a qualified electrician if you are in doubt as to whether the appliance is properly grounded.

SPECIFICATIONS

Electrical Ratings

Model & Mfg. No	Volts	Watts	Amps	Hertz
WD-20-CF 9400130	120	500	4.2	50/60
WD-20-HC 9400132	230	500	2.2	50/60
WD-20-CF 9400134	230	500	2.2	50/60
WD-20-HG 9400136	230	500	2.2	50/60
WD-21A-CF 9400140	120	1000	8.3	50/60
WD-21A-HG 9400142	230	1100	4.8	50/60
WD-21A-HC 9400144	230	1100	4.8	50/60
WD-21A-CF 9400146	230	1100	4.8	50/60
WD-35A-CF 9400150	120	1400	11.7	50/60
WD-35A-HG 9400152	230	1530	6.7	50/60
WD-35A-HC 9400154	230	1530	6.7	50/60
WD-35A-CF 9400156	230	1530	6.7	50/60

⚠ CAUTION ⚠

All electrical connections must be in accordance with local electrical codes and any other applicable codes.


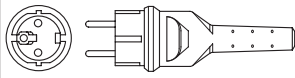
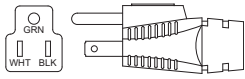
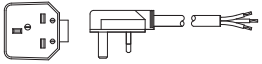
Capacity

- WD-20 Holds up to 40 standard hot dog buns.
- WD-21A One 4" (100 mm) deep full size steam table pan. Holds 40-50 standard hot dog buns.
- WD-35A Two 4" (100 mm) deep 2/3 size steam table pan. Holds 50-60 standard hot dog buns.

Shipping Weight

- WD-20 58 lbs. (27 kilos)
- WD-21A 56 lbs. (26 kilos)
- WD-35A 72 lbs. (33 kilos)

Electrical Cord & Plug Configurations

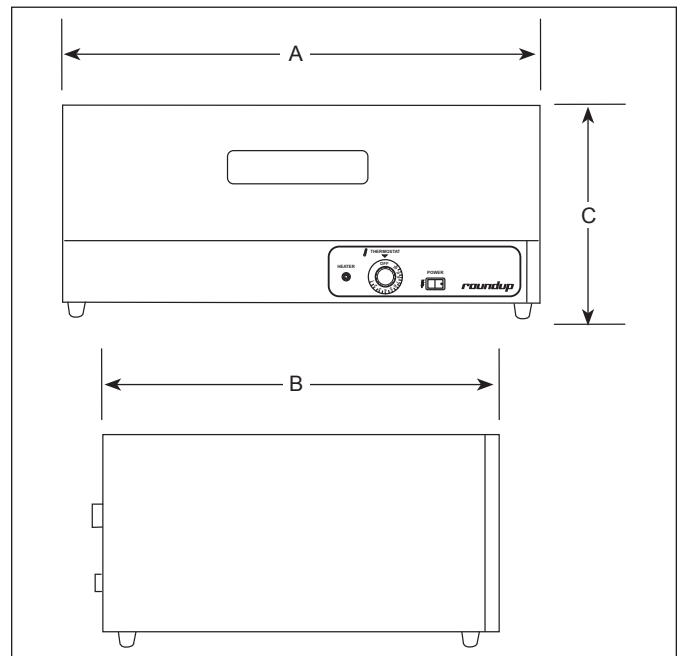
Letter Code*	Description	Configuration
H	Harmonized Cord	
(H)C**	CEE 7/7 16 Amp, 250 VAC (Assembly Only)	
(C)F***	5-15P, 15 Amp, 250 VAC, Non-Locking (Assembly Only)	
(H)G**	BS-1365 Fused, Permaplug, 16 Amp, 250 VAC (Assembly Only)	

* Used in model designation

** Indicates that the plug comes with a Harmonized Cord

*** Indicates that the plug comes with a Commercial Cord

Dimensions



Model	Width (A)	Depth (B)	Height (C)
WD-20	18-3/4" (476 mm)	21" (533 mm)	10-5/8" (270 mm)
WD-21A	22-3/16" (564 mm)	17" (432 mm)	10-3/8" (264 mm)
WD-35A	32-1/2" (826 mm)	17" (432 mm)	10-3/8" (264 mm)

INSTALLATION

Unpacking

1. Remove unit and all packing materials from shipping carton.
2. Open the large box. Remove all packing materials and protective coverings from the unit and parts.
3. Wash removable parts in soap and water. Wipe all surfaces of the unit with a hot damp cloth.

NOTE: Do not use a dripping wet cloth. Wring out before use.

4. Install parts into unit.

NOTE: If any parts are missing or damaged, contact A.J. Antunes & Co. IMMEDIATELY at 1-877-392-7854.

Equipment Setup

When placing the unit into service, pay attention to the following guidelines.

- Make sure power to the unit is off and the unit is at room temperature.
- Do not block or cover any openings on the unit.
- Do not immerse cord or plug in water.
- Keep cord away from heated surfaces.
- Do not allow cord to hang over edge of table or counter.

Connect the unit to the power supply. Refer to the specification plate for the proper voltage.

⚠ CAUTION ⚠

All electrical connections must be in accordance with local electrical codes and any other applicable codes.

⚠ WARNING ⚠

ELECTRICAL SHOCK HAZARD. FAILURE TO FOLLOW THE INSTRUCTIONS IN THIS MANUAL COULD RESULT IN SERIOUS INJURY OR DEATH.

- **Electrical ground is required on this appliance.**
- **Do not modify the power supply cord plug. If it does not fit the outlet, have a proper outlet installed by a qualified electrician.**

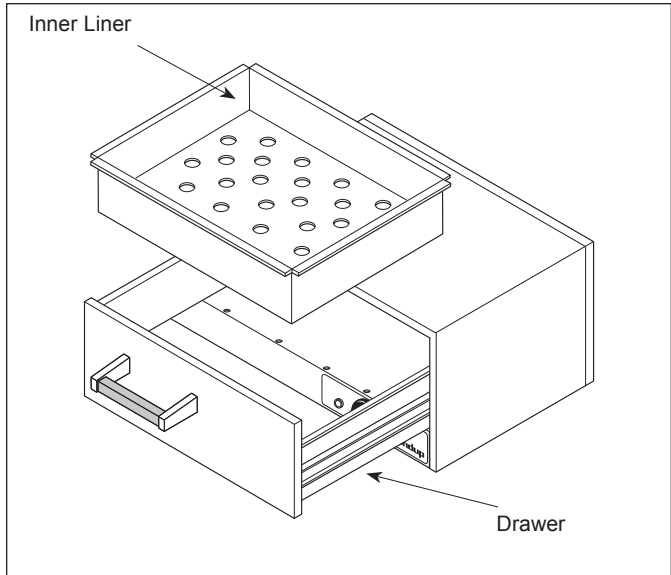


Figure 1. Warmer Drawer-WD-20

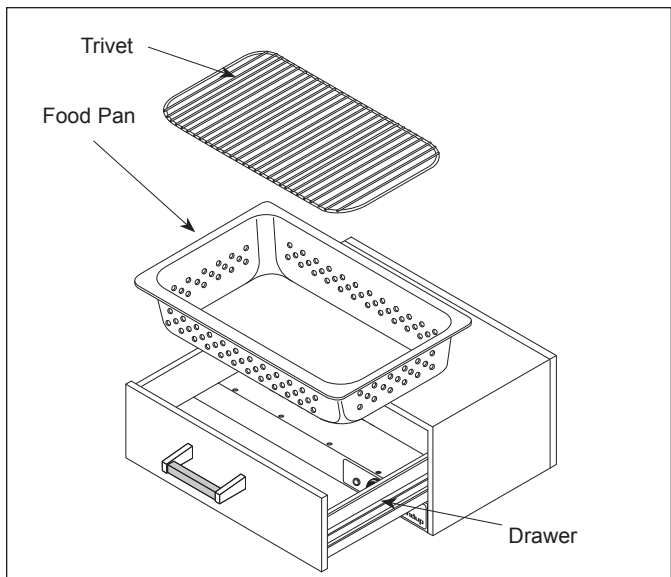


Figure 2. Warmer Drawer-WD-21A & WD-35A

- **Do not use an extension cord with this appliance.**
- **The unit should be grounded according to local electrical codes to prevent the possibility of electrical shock. It requires a grounded receptacle with separate electrical lines, protected by fuses or circuit breaker of the proper rating.**
- **Check with a qualified electrician if you are in doubt as to whether the appliance is properly grounded.**

OPERATION

Operating Instructions

The recommended starting temperature for hot dog buns and hard rolls is 140°F (60°C). Your operation may require temperature adjustment up or down, depending on product and usage.

Most products warm to serving temperature of 130°- 140°F (54°- 60°C) in 15-20 minutes and remain ready to serve for up to 1½ hours, if the product remains in its original packaging. If the product is removed from its original packaging, the serving time is reduced to 30-45 minutes.

1. Turn the Rocker Switch (power On/Off) to ON.
2. Set the thermostat control to the desired setting. The heater ON light will be lit.
3. Load product into the drawer.

Hi-Limit Reset

A Hi-Limit Thermostat with a reset switch is contained in the heating circuit. If the unit should overheat for any reason, the Hi-Limit Thermostat opens and cuts off power to the Heating Element.

To reset the Hi-Limit Thermostat:

1. Turn the Rocker Switch (power On/Off) to OFF, unplug the power cord, and allow the unit to cool down before proceeding.
2. Remove the Base Plate and push in the Reset Switch located on the bottom of the Hi-Limit Thermostat (Figure 3).

If the Hi-Limit Thermostat continually trips, contact your Authorized Service Agency to determine the reason for overheating.

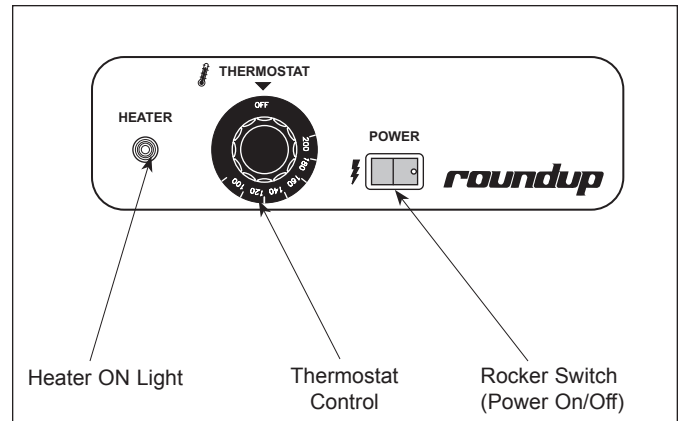


Figure 2. Controls

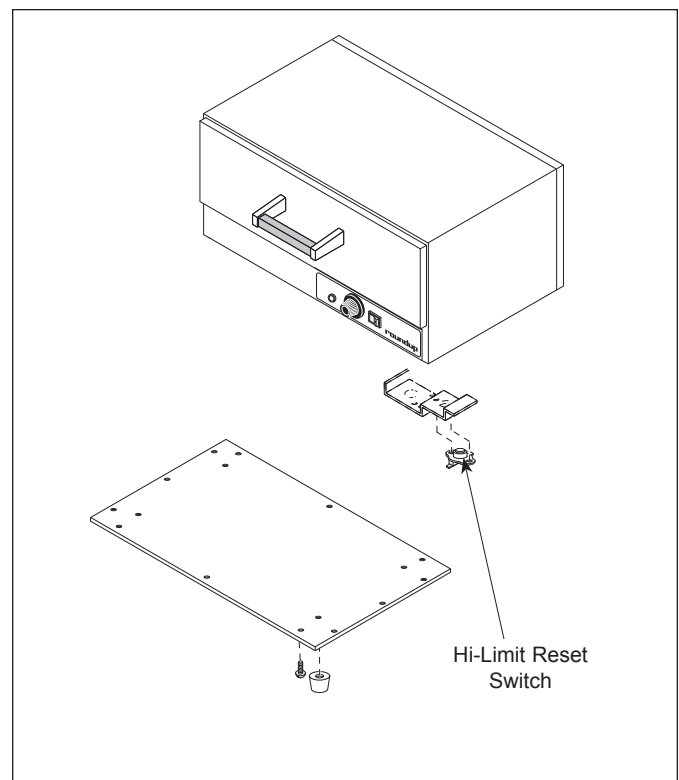


Figure 3. Hi-Limit Reset

MAINTENANCE

⚠ WARNING ⚠

Turn the unit off, disconnect the power source and allow the unit to cool down before performing any service or maintenance on the unit.

Cleaning

DAILY

1. Turn the unit off, unplug the power cord, and allow the unit to cool down before proceeding.
2. Remove all parts from inside the Warmer Drawer. Wash all parts in soap and water, rinse in clear water, and wipe dry.
3. Wipe the exterior of unit with a damp cloth or stainless steel cleaner, then wipe dry with a clean, dry cloth.
4. Re-install all parts into Warmer Drawer.

NOTE: Failure to properly clean and dry the parts prior to re-assembly may result in the accumulation of water/moisture overnight. This may lead to permanent damage of the equipment finish and its accessories. This damage is permanent and not covered by warranty.

⚠ CAUTION ⚠

To prevent damage to the unit, do not use abrasive cleaners on the unit.

⚠ WARNING ⚠

Use caution when using caustic cleaning solutions. Read all manufacturer label instructions to avoid personal injury.

WEEKLY

1. Turn the unit off, unplug the power cord, and allow the unit to cool down before proceeding.
2. Remove all parts from the Warmer Drawer. Wash all parts in soap and water, rinse in clear water, and wipe dry.
3. Pull the Drawer out (Figure 4). Push down simultaneously on both the interlocking tabs (above each drawer side rail - Figure 4) and pull the Drawer away from unit.
4. Wipe the interior of the Warmer Drawer with a clean, damp cloth. Then, wipe dry with a clean, dry cloth.

3. Wipe the exterior of unit with a damp cloth or stainless steel cleaner, then wipe dry with a clean, dry cloth.
4. Re-install all parts into unit.

Replacing Components

NOTE: It is recommended that all service procedures be performed by a qualified authorized service technician.

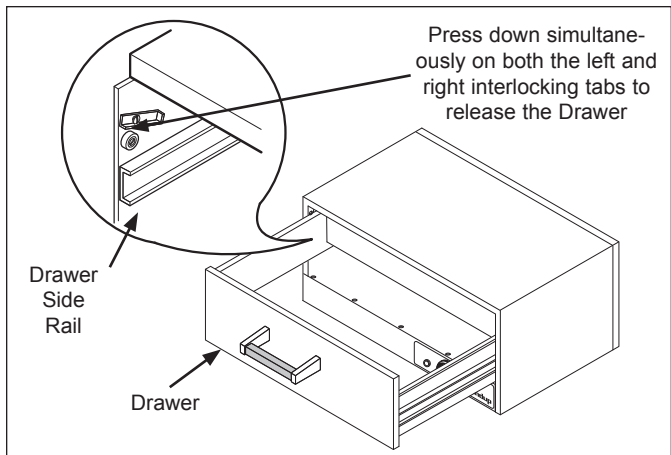


Figure 4. Removing Drawer

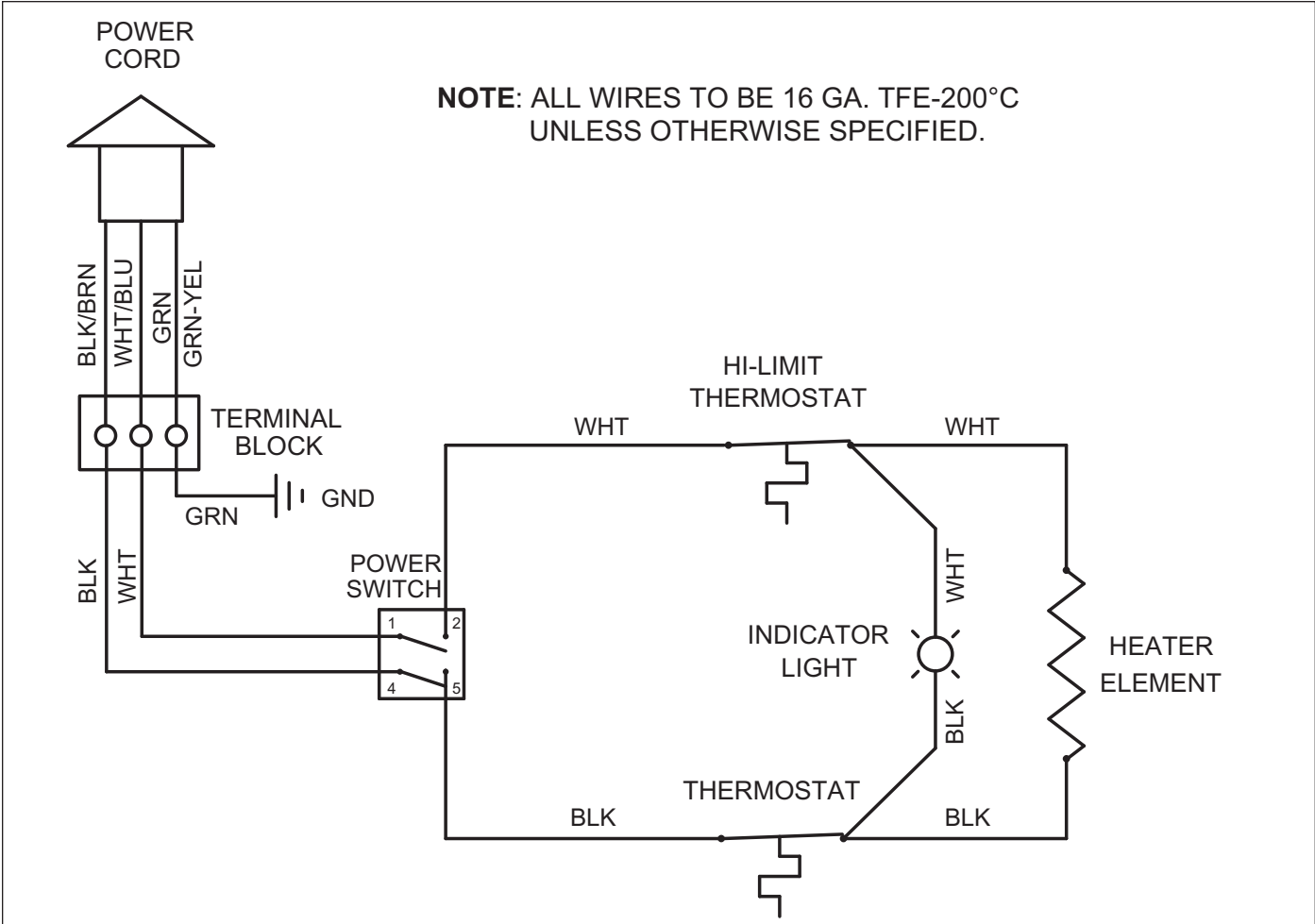
TROUBLESHOOTING

⚠ WARNING ⚠

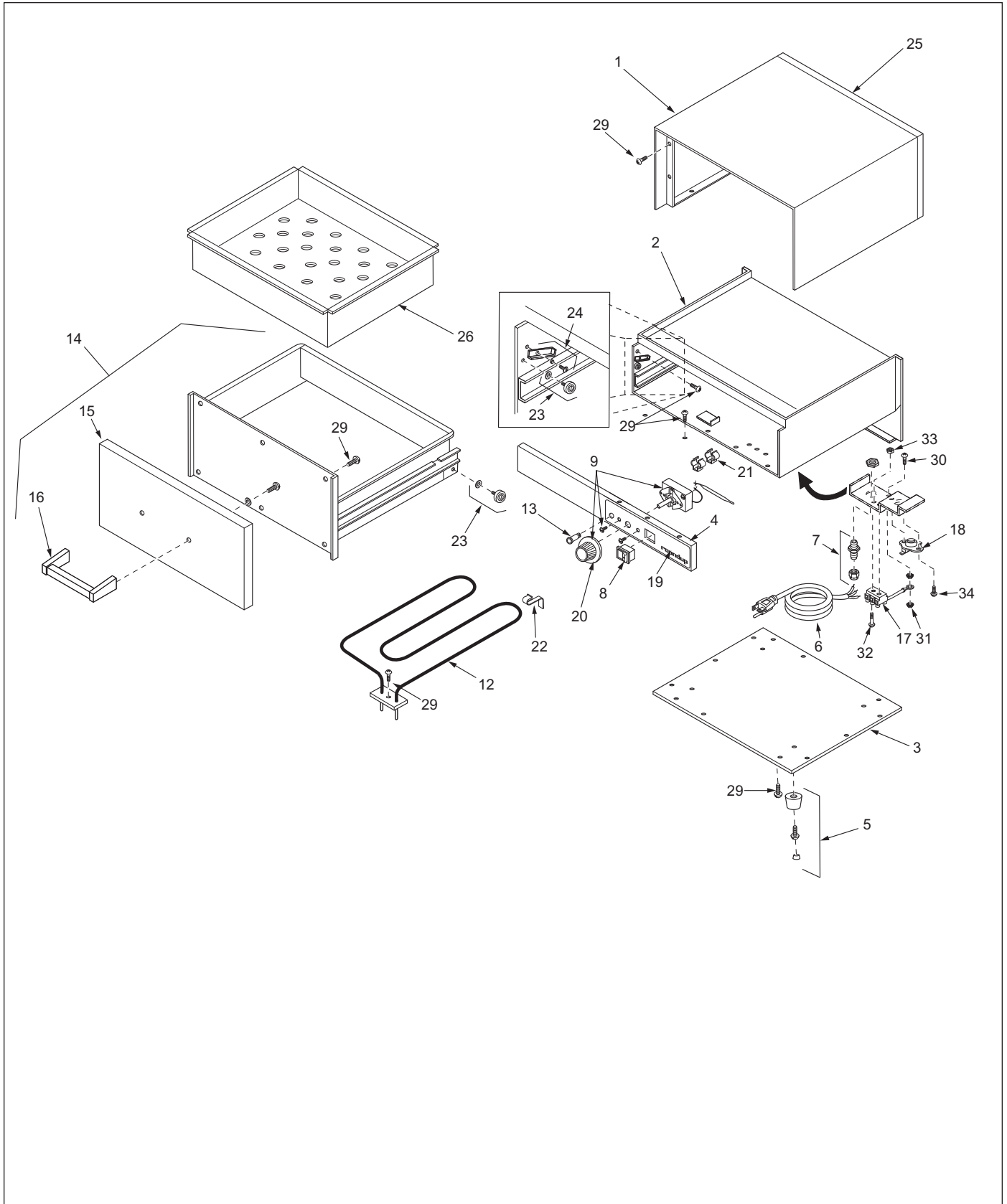
To avoid possible personal injury and/or damage to the unit, inspection, test and repair of electrical equipment should be performed by qualified service personnel. The unit should be unplugged when servicing.

Problem	Possible Cause)	Corrective Action
Unit will not heat up.	Power Cord is not Plugged in.	Plug the Power Cord into the appropriate outlet.
	Circuit Breaker is tripped.	Reset the Circuit Breaker. Contact your electrician if the breaker trips again.
	Hi-Limit Thermostat is tripped or inoperable.	Reset the Hi-Limit Thermostat according to Figure 3. If the unit still does not heat up, contact your maintenance person or Authorized Service Agency for service.
	Loose, broken, or burnt wiring in Heating Circuit.	Contact your maintenance person or Authorized Service Agency for service.
	Faulty Heating Element.	Contact your maintenance person or Authorized Service Agency for service.
	Faulty Thermostat Control.	Contact your maintenance person or Authorized Service Agency for service.
Product becomes hard and dry.	Thermostat Control is too high.	Readjust the Thermostat Control.
	Product is not being kept in its original packaging.	Refer to the Operating Instructions section of this Manual.
	Product is kept beyond the normal holding times.	Refer to the Operating Instructions section of this manual.
Unit is getting too hot.	Thermostat Control is set too high.	Readjust the Thermostat Control.
	Faulty Thermostat Control.	Contact your maintenance person or Authorized Service Agency for service.

WIRING DIAGRAM



REPLACEMENT PARTS – WD-20



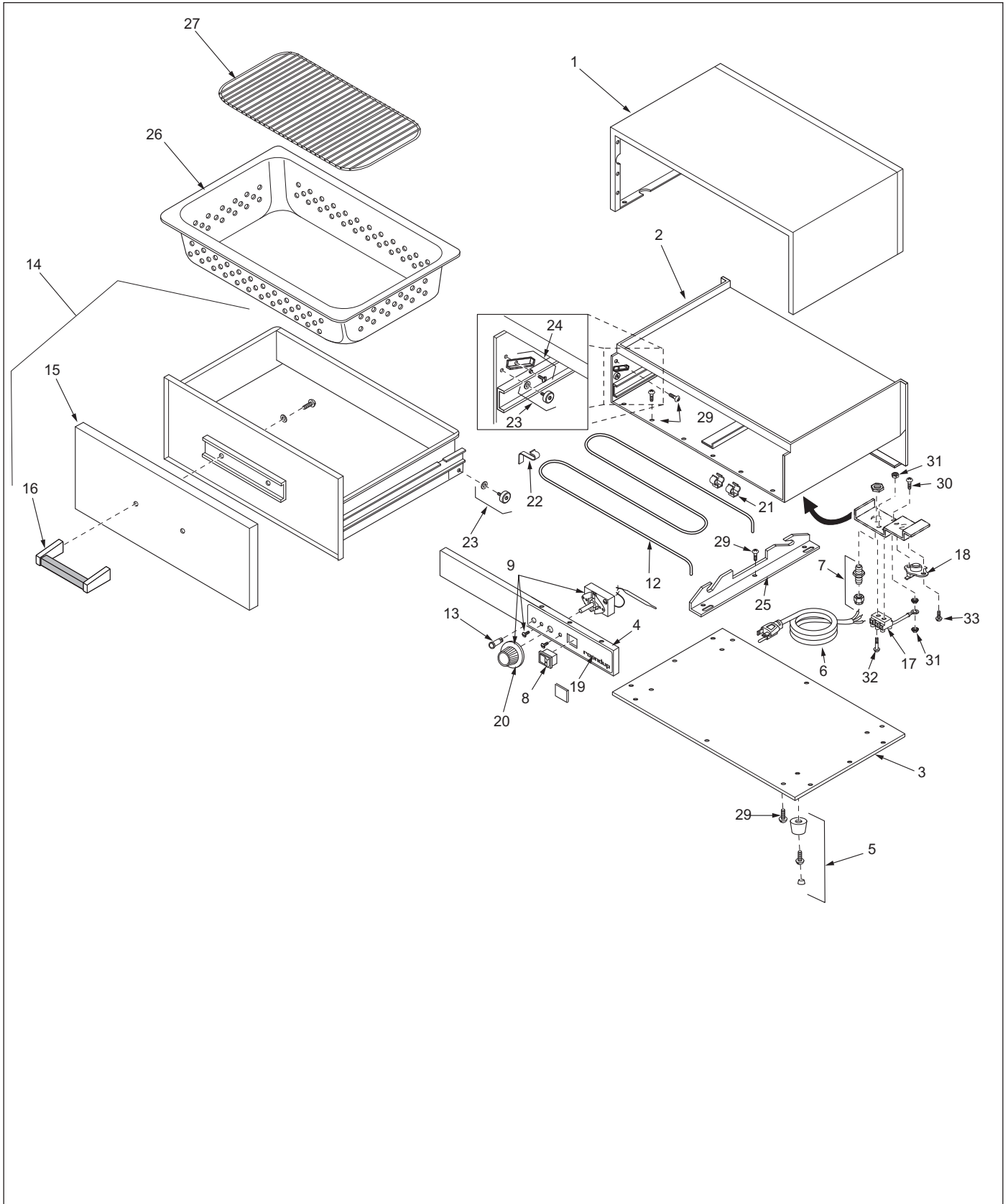
REPLACEMENT PARTS – WD-20 (continued)

Item	Part No.	Description	Qty.
1	0010439	Housing, Outer	1
2	0021345	Liner Weldment, Inner	1
3	0502937	Base Plate	1
4	0504278	Control Panel	1
5	210K230	Bumper Leg Kit	1
6	0700463	Power Cord, 120 Volt	1
	0700453	Power Cord, 230 Volt	1
7	040K251	Strain Relief Kit	1
8	4010151	Rocker Switch, Power On/Off 120 Volt	1
	4010137	Rocker Switch, Power On/Off 230 Volt	1
9	403K115	Thermostat Kit, F° (Incl. #20)	1
	403K160	Thermostat Kit, C° (Incl. #20)	1
12	4030225	Heating Element, 120 Volt, 500 Watt	1
	4030231	Heating Element, 230 Volt, 500 Watt	1
13	4060323	Indicator Light, Heater ON, 120 Volt	1
	4060229	Indicator Light, Heater ON, 230 Volt	1
14	0011825	Drawer Assembly (Incl. # 15 & 16)	1
15	0501662	Drawer Front	1

Item	Part No.	Description	Qty.
16	210K128	Handle Kit	1
17	7000136	Terminal Block Kit	1
18	4030291	Thermostat, Hi-Limit	1
19	1000925	Label	1
20	2100110	Knob, F°	1
	2100224	Knob, C°	1
21	300P108*	Tube Clip, Thermostat Bulb	1
22	300P107*	Tube Clip, Heating Element	1
23	210K195	Bearing Kit	2
24	7000649	Lock Lever Kit, LH	1
	7000648	Lock Lever Kit, RH	1
25	0501654	Rear Panel	1
26	0504272	Liner, Drawer - Inner	1
27	0800239	Trivet (not shown)	1
28	0700504	Wire Set (not shown)	1
29	308P157*	Screw, #8-32 x 3/8"	1
30	308P124*	Screw, #8-32 x 1/2"	1
31	308P143*	Nut, #8-32	1
32	306P123*	Screw, #6-32 x 7/8"	1
33	306P130*	Nut, #6-32 KEPS	1
34	308P133*	Screw, #8-32 x 1/4"	1

* Only available in packages of 10.

REPLACEMENT PARTS – WD-21A & 35A



REPLACEMENT PARTS – WD-21A & 35A (continued)

Item	Part No.	Description	Qty.
1	0501894	Cover (WD-21A)	1
	0501199	Cover (WD-35A)	1
2	0021347	Liner Weldment, Inner (WD-21A)	1
	0021350	Liner Weldment, Inner (WD-35A)	1
3	0501841	Base Plate (WD-21A)	1
	0501196	Base Plate (WD-35A)	1
4	0504285	Panel, Control (WD-20)	1
	0504293	Panel, Control (WD-35)	1
5	210K230	Bumper Leg Kit	1
6	0700463	Power Cord, 120 Volt	1
	0700453	Power Cord, 230 Volt	1
7	4010151	Strain Relief	1
8	4010151	Rocker Switch, Power On/Off, 120 Volt	1
	4010137	Rocker Switch, Power On/Off, 230 Volt	1
9	403K102	Thermostat Kit, F° (Incl. #20)	1
	403K160	Thermostat Kit, C° (Incl. #20)	1
12	4030172	Heating Element, 1000 watt 120 Volt (WD-21A)	1
	4030173	Heating Element, 1100 watts 230 Volt (WD-21A)	1
	4030175	Heating Element 1400 watts 120 Volt (WD-35A)	1
	4030176	Heating Element 1530 watts 230 Volt (WD-35A)	1
13	4060323	Indicator Light, Heater ON, 120 Volt	1
	4060229	Indicator Light, Heater ON, 230 Volt	1

Item	Part No.	Description	Qty.
14	0011831	Drawer Assembly (WD-21A) (Incl. # 15 & 16)	1
	0011839	Drawer Assembly (WD-35A) (Incl. # 15 & 16)	1
15	0500783	Drawer Front (WD-21A)	1
	0500820	Drawer Front (WD-35A)	1
16	2100106	Handle	1
17	7000136	Terminal Block	1
18	4030291	Thermostat, Hi-Limit	1
19	1000925	Label	1
20	2100110	Knob, F°	1
	2100224	Knob, C°	1
21	300P108	Tube Clip, Thermostat Bulb	1
22	300P107	Tube Clip, Heating Element	1
23	210K195	Bearing Kit	4
24	7000649	Lock Lever Kit, LH	1
	7000648	Lock Lever Kit, RH	1
25	0504286	Bracket, Heater Retainer	1
26	2130171	Pan, Perforated, Full Size (WD-21A)	1
	2130117	Pan (WD-35A) 2/3 size	2
27	0800383	Trivet, Full Pan (WD-21A)	1
	0800109	Trivet (WD-35A)	2
28	0700504	Wire Set (not shown)	1
29	308P133*	Screw, #8-32 x 1/4"	1
30	308P124*	Screw, #8-32 x 1/2"	1
31	308P143*	Nut, #8-32	1
32	306P123*	Screw, #6-32 x 7/8"	1
33	306P104*	Screw, #6-32 x 1/4"	1

* Only available in packages of 10.

Limited Warranty

Equipment manufactured by Roundup Food Equipment Division of A.J. Antunes & Co. has been constructed of the finest materials available and manufactured to high quality standards. These units are warranted to be free from mechanical and electrical defects for a period of one year from date of purchase or 18 months from shipment from factory, whichever occurs first, under normal use and service, and when installed in accordance with manufacturer's recommendations. To insure continued proper operation of the units, follow the maintenance procedure outlined in the Owner's Manual.

1. This warranty does not cover cost of installation, defects caused by improper storage or handling prior to placing of the Equipment. This warranty does not include overtime charges or work done by unauthorized service agencies or personnel. This warranty does not cover normal maintenance, calibration, or regular adjustments as specified in operating and maintenance instructions of this manual, and/or labor involved in moving adjacent objects to gain access to the Equipment. This warranty does not cover consumable items such as platen release sheet and conveyor belt wraps. **This warranty does not pay travel, mileage, or any other charges for an authorized service agency to reach the equipment location.**
2. Roundup reserves the right to make changes in design or add any improvements on any product. The right is always reserved to modify equipment because of factors beyond our control and government regulations. Changes to update equipment do not constitute a warranty charge.
3. **If shipment is damaged in transit, the purchaser should make a claim directly upon the carrier. Careful inspection should be made of the shipment as soon as it arrives and visible damage should be noted upon the carrier's receipt. Damage should be reported to the carrier. This damage is not covered under this warranty.**
4. Warranty charges do not include freight or foreign, excise, municipal or other sales or use taxes. All such freight and taxes are the responsibility of the purchaser.
5. THIS WARRANTY IS EXCLUSIVE AND IS IN LIEU OF ALL OTHER WARRANTIES, EXPRESSED OR IMPLIED, INCLUDING ANY IMPLIED WARRANTY OR MERCHANTABILITY OR FITNESS FOR A PARTICULAR PURPOSE, EACH OF WHICH IS HEREBY EXPRESSLY DISCLAIMED. THE REMEDIES DESCRIBED ABOVE ARE EXCLUSIVE AND IN NO EVENT SHALL ROUNDUP BE LIABLE FOR SPECIAL CONSEQUENTIAL OR INCIDENTAL DAMAGES FOR THE BREACH OR DELAY IN PERFORMANCE OF THIS WARRANTY.



A.J. Antunes & Co.
Headquarters/Manufacturing
180 Kehoe Boulevard
Carol Stream, Illinois 60188 USA
Phone (630) 784-1000
Toll Free (800) 253-2991
Fax: (630) 784-1650

Antunes Equipment
Manufacturing (Suzhou) Ltd.,
9 Hou Ju Road, Building #24,
S&T Park, SND
Suzhou, Jiangsu, China 215011
Phone: 86-512-6841-3637
Fax: 86-512-6841-3907

www.ajantunes.com