

MANUFACTURING

NUMBERS:

9210314

9210315

roundup

by A.J. Antunes & Co. ®



P/N 1011129 Rev. Q 07/13

VERTICAL CONTACT TOASTER

Model VCT-2010



Owner's Manual

TABLE OF CONTENTS

Owner Information	2	Fault Messages	10
General	2	Error Codes	10
Warranty Information	2	Maintenance	11
Service/Technical Assistance	3	Daily.....	11
Specifications	5	Replacing the Release Sheet (Every 3-5 Weeks)...	12
Dimensions	5	Replacing the Silicone Belts (Every 2–4 Months)...	13
Electrical Ratings.....	5	About the VCT-2010 Clip Style Belt	13
Electrical Cord & Plug Configurations	5	Checking the Conveyor Belt Chains	
Installation	7	(Every 3–6 Months)	14
Unpacking.....	7	Checking the Roller Tensioners	
Equipment Setup	7	(every 3–6 months)	15
Assembling the Unit	7	Troubleshooting	16
Operation	8	Replacement Parts	21
Operating Instructions	8	Wiring Diagram	25
Light/Dark Adjustments.....	8	VCT-2010 Clip Style Belt Instructions	26
User Mode	9	Notes	27
Manager Mode	9	Limited Warranty	28
Safety Features	10		

OWNER INFORMATION

General

The Vertical Contact Toaster Model VCT-2010 is designed for contact toasting of buns. The toaster design allows the operator to place buns on both sides of the heated platen at the same time. Buns are placed into the top of the toaster and uniform, golden brown, warm buns are then retrieved at the base of the toaster.

This manual provides the safety, installation, and operating procedures for the Vertical Contact Toaster Model VCT-2010. We recommend that all information contained in this manual be read prior to installing and operating the unit.

Your Vertical Contact Toaster Model VCT-2010 is manufactured from the finest materials available and assembled to Roundup’s strict quality standards. This unit has been tested at the factory to ensure dependable, trouble-free operation.

Warranty Information

Please read the full text of the Limited Warranty in this manual.

If the unit arrives damaged, contact the carrier immediately and file a damage claim with them. Save all packing materials when filing a claim. Freight damage claims are the responsibility of the purchaser and are not covered under warranty.

The warranty does NOT extend to:

- Damages caused in shipment or damage as result of improper use.
- Installation of electrical service.
- Normal maintenance as outlined in this manual.
- Malfunction resulting from improper maintenance.
- Damage caused by abuse or careless handling.
- Damage from moisture into electrical components.
- Damage from tampering with, removal of, or changing any preset control or safety device.

IMPORTANT! Keep these instructions for future reference. If the unit changes ownership, be sure this manual accompanies the equipment.

OWNER INFORMATION (continued)

Service/Technical Assistance

If you experience any problems with the installation or operation of your unit, contact your local Roundup Authorized Service Agency.

Fill in the information below and have it handy when calling your Authorized Service Agency for assistance. The serial number is on the specification plate located on the rear of the unit.

Purchased From: _____

Date of Purchase: _____

Model No.: _____

Serial No.: _____

Mfg. No.: _____

Refer to the directory included with your unit or visit our web site at www.ajantunes.com for a list of Authorized Service Agencies.

Authorized Service Agency

Name: _____

Phone No.: _____

Address: _____

Use only genuine Roundup replacement parts in this unit. Use of replacement parts other than those supplied by the manufacturer will void the warranty. Your Authorized Service Agency has been factory trained and has a complete supply of parts for this toaster.

You may also contact the factory at **1-877-392-7854** (toll free in the U.S.) or **630-784-1000** if you have trouble locating your Authorized Service Agency.

IMPORTANT

A.J. Antunes & Co. reserves the right to change specifications and product design without notice. Such revisions do NOT entitle the buyer to corresponding changes, improvements, additions, or replacements for previously purchased equipment.

IMPORTANT SAFETY INFORMATION

In addition to the warnings and cautions in this manual, use the following guidelines to safely operate the unit:

- Read all instructions before using equipment.
- For your safety, the equipment is furnished with a properly grounded cord connector. Do NOT attempt to defeat the grounded connector.
- Install or locate the equipment only for its intended use as described in this manual. Do NOT use corrosive chemicals in this equipment.
- Do NOT operate this equipment if it has a damaged power cord or plug, if it is not working properly, or if it has been damaged or dropped.
- This equipment should be serviced by qualified personnel only. Contact the nearest Authorized Service Agency for adjustment or repair.
- Do NOT block or cover any openings on the unit.
- Do NOT immerse the power cord or plug in water.
- Keep the power cord away from heated surfaces.
- Do NOT allow the power cord to hang over edge of a table or counter.

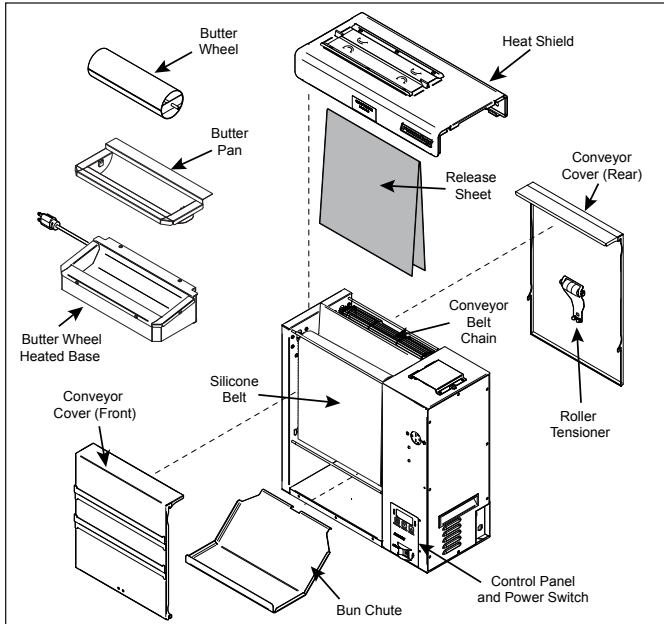
The following warnings and cautions appear throughout this manual and should be carefully observed:

- Turn the power off, unplug the power cord, and allow unit to cool down before performing any service or maintenance.
- The toaster should be grounded according to local electrical codes to prevent the possibility of electrical shock. It requires a grounded receptacle with separate electrical lines protected by fuses or a circuit breaker of the proper rating.
- Bread may burn. Therefore toasters must NOT be used near or below curtains or other combustible walls and materials. Failure to maintain safe operating distances may cause discoloration or combustion.
- When installing a Silicone Belt, do NOT install it around the Upper and Lower Support Rods or permanent damage to the Silicone Belt will occur. Make sure the Silicone Belt is only installed around the Conveyor Belt Chain.
- Make sure both ends of the Silicone Belt are aligned before installing the Silicone Belt Pin.

- Failure to use Release Sheets may result in damage to the equipment and loss of warranty coverage.
- Do NOT clean this appliance with a water jet.
- If the power cord is damaged, it must be replaced by the manufacturer, its service agent, or a similarly qualified person.
- All electrical connections must be in accordance with local electrical codes and any other applicable codes.
- **WARNING, ELECTRICAL SHOCK HAZARD. FAILURE TO FOLLOW THESE INSTRUCTIONS COULD RESULT IN SERIOUS INJURY OR DEATH.**
 - Electrical ground is required on this appliance.
 - Do NOT modify the power cord plug. If it does not fit the outlet, have a proper outlet installed by a qualified electrician.
 - Do NOT use an extension cord with this unit.
 - Check with a qualified electrician if you are unsure if the appliance is properly grounded.

SPECIFICATIONS

Dimensions



Model & Mfg. No.	Width (A)	Depth (B)	Height (C)
VCT-2010 9210314 9210615	20" (508 mm)	15 1/4" (387 mm)	20" (508 mm)

Electrical Ratings

Model & Mfg. No.	Volts	Watts	Amp.	Hz.
VCT-2010 9210314	208	3300	15.8	50/60
VCT-2010 9210315	230	3300	14.4	50/60

Electrical Cord & Plug Configurations

Model & Mfg. No.	Description	Configuration
VCT-2010 9210314	Power Cord Assembly 20 Amp, 250 Volt Right Angle	
VCT-2010 9210315	16 Amp, 250 Volt CEE 7/7 Plug	

⚠ WARNING ⚠

ELECTRICAL SHOCK HAZARD. FAILURE TO FOLLOW THE INSTRUCTIONS IN THIS MANUAL COULD RESULT IN SERIOUS INJURY OR DEATH.

- Electrical ground is required on this appliance.
- Do NOT modify the power cord plug. If it does not fit the outlet, have a proper outlet installed by a qualified electrician.
- Do NOT use an extension cord with this appliance.
- The toaster should be grounded according to local electrical codes to prevent the possibility of electrical shock. It requires a grounded receptacle with separate electrical lines protected by fuses or a circuit breaker of the proper rating.
- Check with a qualified electrician if you are unsure if the appliance is properly grounded.

⚠ CAUTION ⚠

Failure to use Release Sheets may result in damage to the unit and loss of warranty coverage.

SPECIFICATIONS (continued)

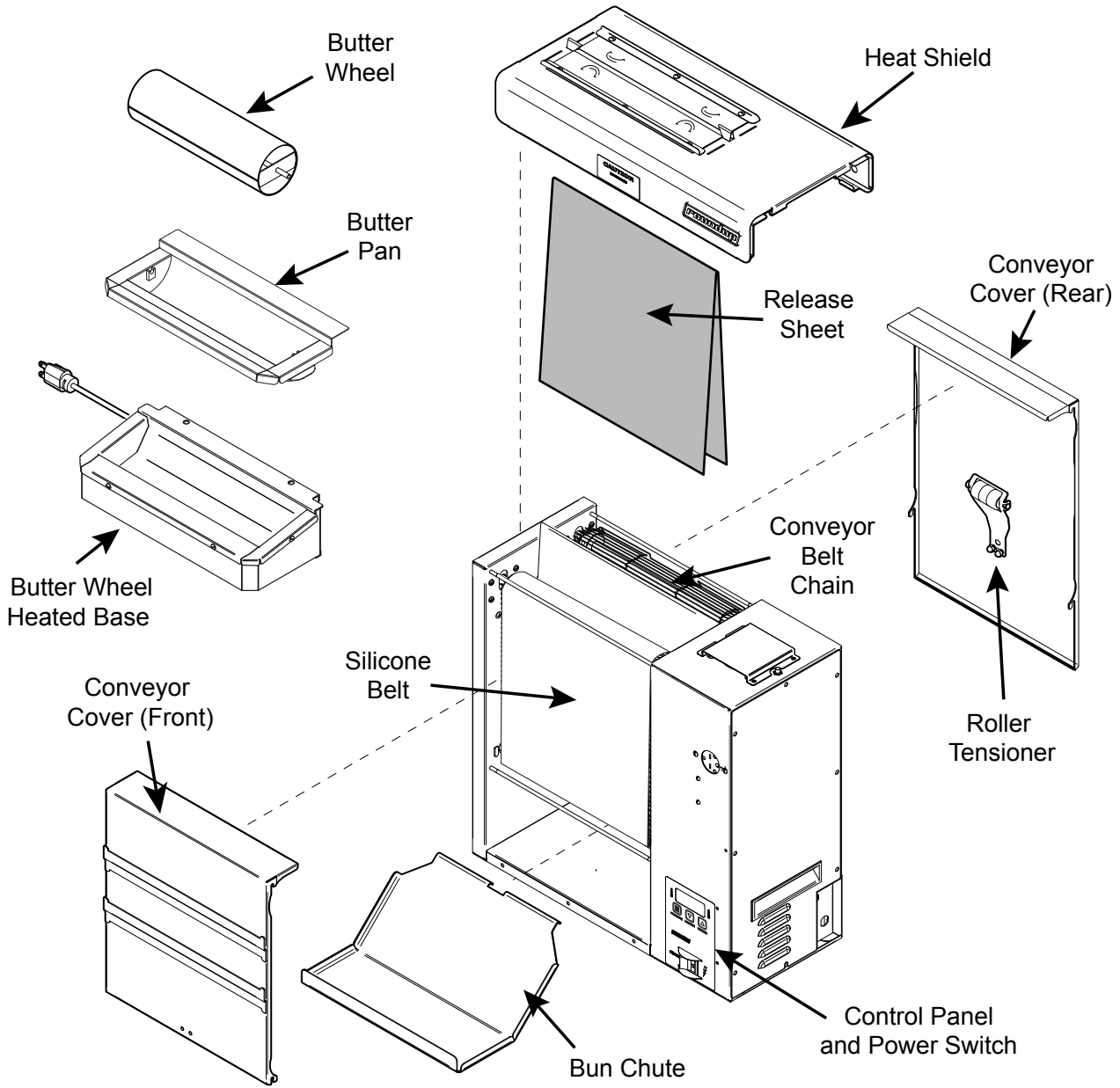


Figure 1. VCT-2010 Vertical Contact Toaster

INSTALLATION

Unpacking

1. Remove the unit and all packing materials from the shipping carton.
2. Open the Accessories Box. It should contain the following:
 - Bun Chute
 - Butter Wheel Assy. (including Butter Wheel, Butter Pan, and Butter Wheel Heated Base)
 - Two Release Sheets
 - Owner's Manual
 - Authorized Service Agency Directory
3. Remove all shipping tape and protective coverings from the unit and parts.

NOTE: If any parts are missing or damaged, contact Antunes Technical Service IMMEDIATELY at 1-877-392-7854 (toll free in the U.S.) or 630-784-1000.

Equipment Setup

Before placing the toaster into service, pay attention to the following guidelines:

- Make sure power is off and the toaster is at room temperature.
- Do NOT block or cover any openings on the unit.
- Do NOT immerse the power cord or plug in water.
- Keep the power cord away from heated surfaces.
- Do NOT allow the power cord to hang over the edge of a table or counter.
- Connect the unit to the proper power supply. Refer to the specification plate for the proper voltage.

⚠ CAUTION ⚠

Bread may burn. Therefore toasters must NOT be used near or below curtains or other combustible walls and materials. Failure to maintain safe operating distances may cause discoloration or combustion.

⚠ CAUTION ⚠

All electrical connections must be in accordance with local electrical codes and any other applicable codes.

Assembling the Unit

NOTE: The factory has pre-installed a Release Sheet over the Platen (Figure 1). Verify that it is properly in place before proceeding.

1. Place the unit on a flat, sturdy location.
2. Install the Bun Chute so the hooks are installed over the lower rear yellow Support Rod (Figure 2).
3. Hang the Butter Wheel Heated Base on the front of the unit and install the Butter Pan and Butter Wheel inside. (Figure 1).
4. Plug the Butter Wheel Assembly power cord into the receptacle on the front of the unit where the Butter Wheel Assembly is mounted (Figure 2).
5. Place the Heel and Crown Label on the same side as the Butter Wheel Assembly.

IMPORTANT: Do NOT plug any other power cords into the receptacles on the toaster. These outlets are intended for the Butter Wheel ONLY.

NOTE: Make sure the Heat Shield is activating the Conveyor Safety Interlock Switch. The unit will not function unless the Heat Shield is in place and the Conveyor Safety Interlock Switch is activated.

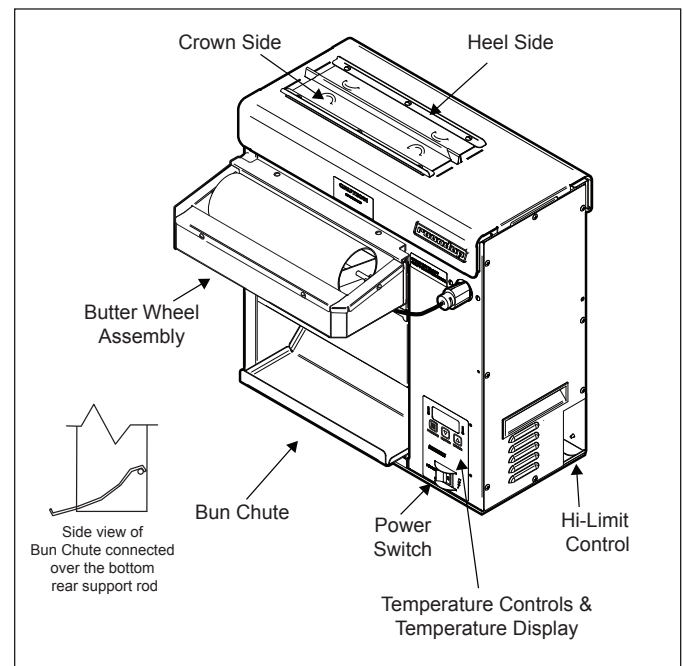


Figure 2. VCT-2010 Components

OPERATION

Operating Instructions

NOTE: The unit includes Bun Thickness Adjustment Controls (Figure 4), which are factory set to #3 for Heels and #4 for Crowns.

NOTE: Recommended settings are #3 for Heels and #4 for Crowns.

1. Turn the power on and allow the unit to warm up for 30 minutes before proceeding.
2. Fill the Butter Pan as directed and turn on the power switch on the Butter Wheel Assembly.

NOTE: The temperature display (Figure 3) flashes “LO” until the toaster reaches its preset operating temperature. When the toaster approaches the preset temperature of 550°F (288°C), “USE” appears in the temperature display and the unit is ready to toast buns. If “USE” does not appear in the window after approximately 30 minutes, contact your Authorized Service Agency.

3. Drop Crowns and Heels into the slot (Figure 3).

NOTE: The cut side of the Heels and Crowns must face each other.

4. Toasted buns will drop out of the unit and down the Bun Chute (Figure 3) in approximately 18 seconds.
5. Test at least 4 buns before putting the toaster into service.
6. Turn the power off for the unit and the Butter Wheel Assembly when finished toasting for the day. Then proceed with the **Daily Cleaning** as outlined in the Maintenance section of this manual.

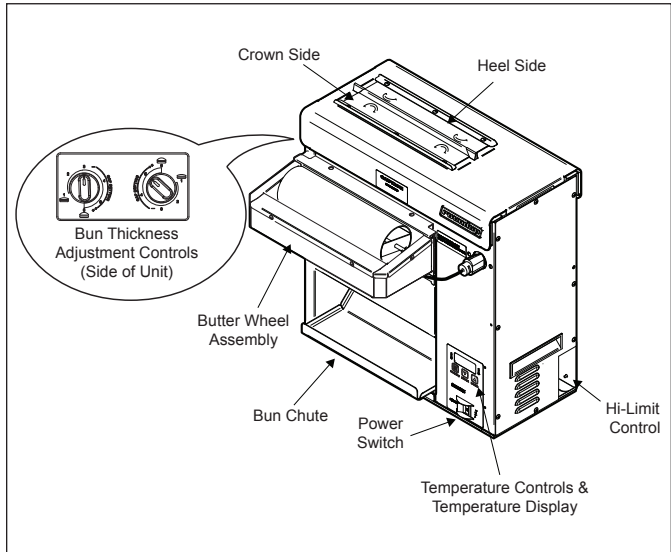


Figure 3. VCT-2010 Toaster

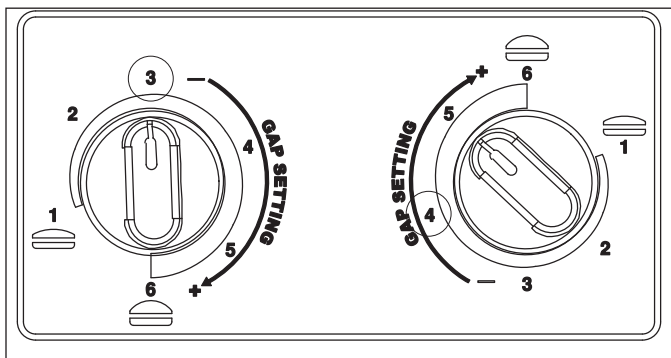


Figure 4. Bun Thickness Adjustment Controls

Light/Dark Adjustments

The light/dark value can be adjusted when the unit is displaying “LO” or “USE”. To adjust the light/dark value, press the **LIGHTER** or **DARKER** button. The display will change to show the current light/dark value.

NOTE: The default light/dark value is d0.

Press the **LIGHTER** or **DARKER** button to change the light/dark value. The adjustment range is L1-L9 and d0-d9. L9 is the lightest, d0 is the middle, and d9 is the darkest setting.

To save the light/dark value, press the **PROGRAM** button or wait 5 seconds until the screen displays “LO” or “USE”.

NOTE: Adjusting the light/dark value does NOT change the temperature. It changes the speed of the conveyors. The light/dark value will reset to the d0 value when the unit is turned off.

OPERATION (continued)

User Mode

User Mode allows an operator to view the toaster settings but does not permit any adjustments.

1. Press and hold the **PROGRAM** button for 5 seconds. After 5 seconds, the display will show the actual temperature of the Platen Heater.
2. Press the **LIGHTER** button to view the setpoint of the Platen Heater.
3. Press the **PROGRAM** button to proceed to the Auxiliary Heater menu. The display will show the actual temperature of Auxiliary Heater.
4. Press the **LIGHTER** button to view the setpoint of the Auxiliary Heater.
5. Press the **PROGRAM** button to proceed to the Motor Menu. The display will show the actual speed of the Motor.
6. Press the **LIGHTER** button to view the setpoint of the Motor.

NOTE: The unit will exit User Mode after 5 seconds of keypad inactivity.

Manager Mode

Manager Mode allows an operator to view and adjust the following settings:

- Platen Heater Temperature
- Auxiliary Heater Temperature
- Motor Speed
- Temperature Units

Manager Mode also allows an operator to view (but not adjust) the Ambient Temperature of the Control Compartment.

1. Turn the unit off.
2. Turn the power on while holding the **PROGRAM** button. Continue to hold the button until "ENA" appears on the display (after approximately 10 seconds).
3. Release the **PROGRAM** button. The display now shows the Platen Setpoint Temperature.
4. To adjust the Platen Setpoint, press the **LIGHTER** or **DARKER** buttons to reach the desired temperature.

NOTE: The recommended temperature setting for the Platen Heater is 550°F (288°C).

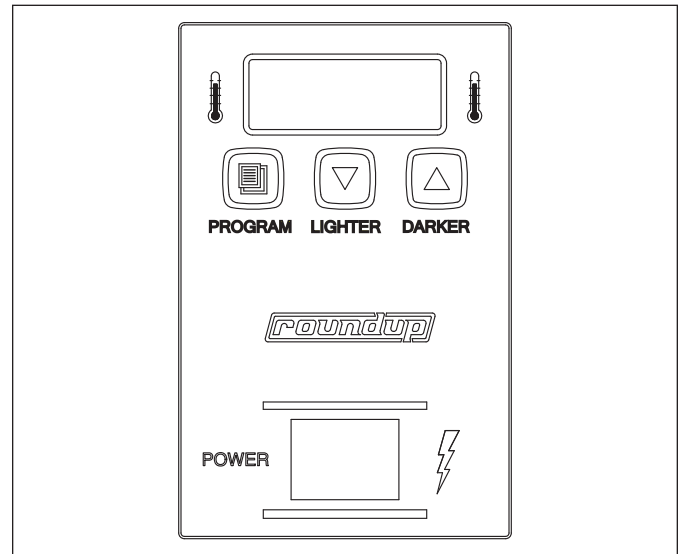


Figure 5. VCT-2010 Toaster Control Panel

5. Press the **PROGRAM** button to proceed to the Auxiliary Heater Setpoint Temperature.
6. To adjust the Auxiliary Heater Setpoint, press the **LIGHTER** or **DARKER** buttons to reach the desired temperature.

NOTE: The recommended temperature setting for the Auxiliary Heaters is 380°F (193°C).

7. Press the **PROGRAM** button to proceed to the Motor Speed Setpoint.
8. Adjust the Motor Speed Setpoint by pressing the **LIGHTER** or **DARKER** buttons to reach the desired speed.

NOTE: The Motor Speed is adjustable from 1-100. The recommended setting is 52.

9. Press the **PROGRAM** button to proceed to Temperature Units.
10. To change the Temperature Units from Fahrenheit or Celsius, press the **LIGHTER** or **DARKER** buttons.
11. Press the **PROGRAM** button to proceed to the Ambient Temperature of the Control Compartment.

NOTE: No changes can be made to the Ambient Temperature of the Control Compartment. Temperatures under 150°F (66°C) are acceptable.

12. Press and hold the **PROGRAM** button to save any changes.

NOTE: The unit will exit Manager Mode after 30 seconds of keypad inactivity.

OPERATION (continued)

Safety Features

HI-LIMIT CONTROL

A Hi-Limit Control turns off electrical power to the heaters and control circuits if the unit overheats. To reset the control, allow 10-15 minutes for the unit to cool, then locate the Hi-Limit Control (Figure 6) on the side of the unit. Remove the black protective cap, press the button, and reinstall the protective cap.

NOTE: If the Hi-Limit Control requires continuous resetting, contact your Authorized Service Agency.

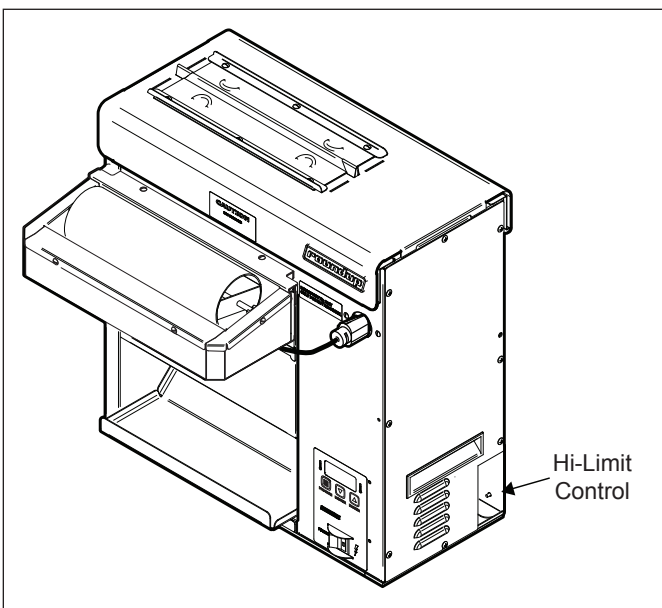


Figure 6. Hi-Limit Control

Fault Messages

The Control Display will flash fault messages when there is a problem with the unit.

“HI” will flash if the Platen Heater temperature is 30°F more than the setpoint or if the Platen Thermocouple is disconnected or open.

“HI” and “USE” will flash if the Auxiliary Heater temperature is 50°F more than the setpoint or if the Auxiliary Thermocouple is disconnected or open.

“CHEC” will flash when the control compartment ambient temperature is more than 150°F (66°C). All heaters will shut off. The unit will not restart until the control compartment ambient temperature falls below 140°F (60°C).

“PO” will flash if the incoming power drops below 190 Volts. The toaster will shut down.

“StoP” will flash when the motor has stopped for seven continuous seconds.

“SpEd” will flash when the motor speed has dropped 25% below the setpoint for 30 continuous seconds.

Error Codes

If any of the following Error Codes appear, turn the power off, allow the unit to cool, and turn the power back on. If the error repeats, contact your Authorized Service Agency for assistance.

ERR 1: Internal error. Cycle the Power Switch. If error persists, replace the board.

ERR 2: Internal error. Cycle the Power Switch. If error persists, replace the board.

ERR 3: Internal error. Cycle the Power Switch. If error persists, replace the board.

ERR 4: Invalid DIP Switch setting. The only approved setting is (left to right) up-up-up-down (1 on; 2, 3, 4 off).

ERR 5: Internal error. Cycle the Power Switch. If error persists, replace the board.

ERR 6: Internal error. Cycle the Power Switch. If error persists, replace the board.

ERR 7: Not used.

ERR 8: Shorted Platen Thermocouple.

ERR 9: Open Platen Thermocouple.

MAINTENANCE

⚠ WARNING ⚠

Turn the power off, unplug the power cord, and let the unit cool down for 30 minutes before starting any service or maintenance.

⚠ CAUTION ⚠

To prevent damage to the unit, do NOT use abrasive cleaners on Release Sheet or Silicone Belt.

⚠ CAUTION ⚠

Do NOT submerge the Butter Wheel Heated Base in water. Do NOT wash this item with a water jet. Do NOT spray cleansers directly on this item.

Daily

AT CLOSE

- Turn the unit OFF and unplug at the outlet. Allow unit to cool.
- Remove the Butter Wheel and Pan. Pour the remaining butter into a clean 1/6-sized Cambro pan. Cover with solid lid and place on dry storage shelf. Mark side of pan "use first". NOTE: Only butter that is clear and debris-free can be held over.
- Take Butter Wheel and Pan to the dishwashing sink. Hand wash, rinse; then sanitize for a minimum of 60 seconds. Allow to air dry. Return to service line; set aside for reassembly at open.

AT OPEN

- Make sure unit is off and unplugged at the outlet.
- Take Heat Shield off; then, remove Release Sheets.
- Fill a full-sized pan with hot Detergent Solution and place both Release Sheets into pan to soak.
- Remove Butter Wheel Heated Base and clean on-line when cleaning the Silicone Belt. Do NOT submerge.
- Remove Heat Shield, Front and Back Conveyor Covers, and Bun Chute and take to dishwashing sink.
NOTE: Do NOT place parts into the powerwash sink.
- Pre-rinse, hand wash, rinse and sanitize parts. Return parts to service line.

- Fill a clean 1/6-sized, 6-inch deep s/s pan with hot Detergent Solution; a second pan with clean rinse water; and a third pan with Sanitizer Solution. Place a clean, white towel in each pan and place near toaster.
- Wipe the Butter Pan Heater.
- Wipe both sides of the Silicone Belts (side facing out first) with a clean, white towel and hot Detergent Solution. Rinse with a clean, white towel and clean rinse water. Sanitize using a clean, white towel and Sanitizer Solution.
- Rotate Belt around so the side facing inward is facing out, exposing the soiled areas of the Silicone Belt. Wash, rinse, and sanitize following the above step.
- Remove Release Sheets that have been soaking and take to dishwashing sink. Hand wash, rinse, and sanitize both sides. Return to service line.
- Wipe outside of toaster with a clean, white towel and **hot** Detergent Solution.
- Reinstall the Bun Chute, Front and Back Conveyor Cover, and Butter Wheel Heated Base.
- Install the Release Sheet. NOTE: Rotate sheet daily from silver to black side.
- Install the Heat Shield. Plug unit in.
- Turn toaster and Butter Pan Holder ON 30 minutes prior to opening.
NOTE: Line 2 toaster in modern restaurants can be cleaned during slow periods of the day.

NOTE: Make sure the Heat Shield is activating the Conveyor Safety Interlock Switch. The unit will not function unless the Heat Shield is in place and the Conveyor Safety Interlock Switch is activated.

NOTE: Check the Release Sheet to make sure it is not caught in the Conveyor. Additional Release Sheets can be purchased under P/N 7000625 (3-Pack).

⚠ CAUTION ⚠

Failure to use Release Sheets may result in damage to the unit and loss of warranty coverage.

MAINTENANCE (continued)

Replacing the Release Sheet (Every 3-5 Weeks)

NOTE: Depending on toaster usage and how well it is cleaned daily, the Release Sheet should last 3 to 5 weeks. Additional Release Sheets can be purchased under P/N 7000625 (3-Pack).

1. Turn the power off to the unit and the Butter Wheel Heated Base. Unplug the power cord.
2. Put on heat-resistant gloves and remove the Heat Shield (Figure 7).
3. Remove and discard the Release Sheet.
4. Lay a new Release Sheet on a clean, dry surface and fold it in half lengthwise. Then gently crease it at the fold using only your fingers (Figure 8).
5. Install the new Release Sheet by draping it over both sides of the Platen with the crease centered on the Platen.
6. Reinstall the Heat Shield with the Release Sheet retainer clips securely over the Release Sheet and Platen.
7. Plug in the power cord and test the unit before returning it to service.

NOTE: Make sure the Heat Shield is activating the Conveyor Safety Interlock Switch. The unit will not function unless the Heat Shield is in place and the Conveyor Safety Interlock Switch is activated.

NOTE: Check the Release Sheet to make sure it is not caught in the Conveyor.

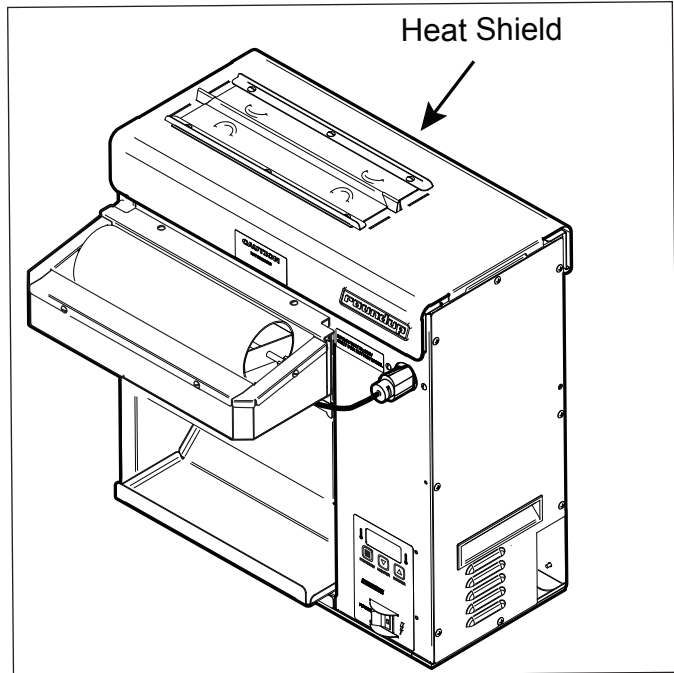


Figure 7. Heat Shield

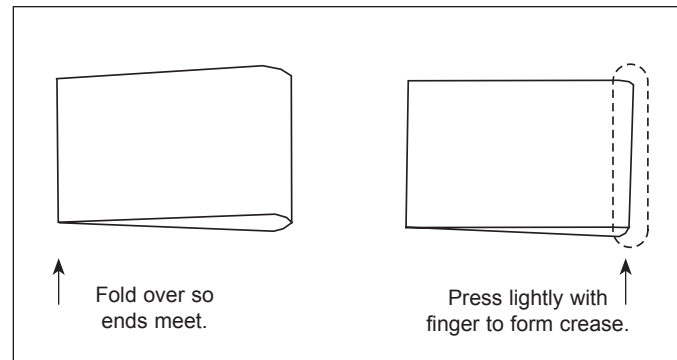


Figure 8. Folding the Release Sheet

⚠ CAUTION ⚠

Failure to use Release Sheets may result in damage to the unit and loss of warranty coverage.

MAINTENANCE (continued)

Replacing the Silicone Belts (Every 2–4 Months)

NOTE: Depending on toaster usage and how well it is cleaned daily, the Silicone Belts should last 2 to 4 months. Additional Silicone Belts may be purchased under P/N 7000898 (2-Pack).

1. Turn the power off, unplug the power cord, and allow the unit to cool.
2. Unplug and remove the Butter Wheel Assembly, and Heat Shield (Figure 1). Set the Bun Thickness Compression Knobs to 6 and 6.
3. Remove the front and rear Conveyor Covers and pull the Silicone Belt Pins out of the zipper on the Silicone Belts (Figure 9).
4. Remove and discard the old Silicone Belts.
5. Clean both Conveyor Belt Chains as you would clean the Silicone Belts during Daily Cleaning.
6. Install new Silicone Belts around the Conveyor Belt Chains between the yellow Upper and Lower Support Rods. The zipper flap should be exposed and hanging down (Figure 9).

NOTE: Make sure the Silicone Belt is only installed around the Conveyor Belt Chain.

7. Install the Silicone Belt Pins in the new Silicone Belts, ensuring the ends are properly aligned (Figure 10).
8. Set the Bun Thickness Compression Knobs to 3 and 4.
9. Reinstall the front and rear Conveyor Covers.
10. Reinstall the Heat Shield and Butter Wheel Assembly.
11. Plug in the power cord and test the unit before returning it to service.

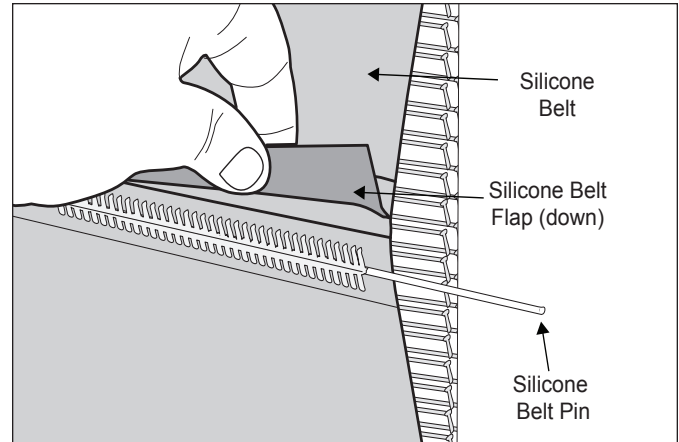


Figure 9. Removing Silicone Belt

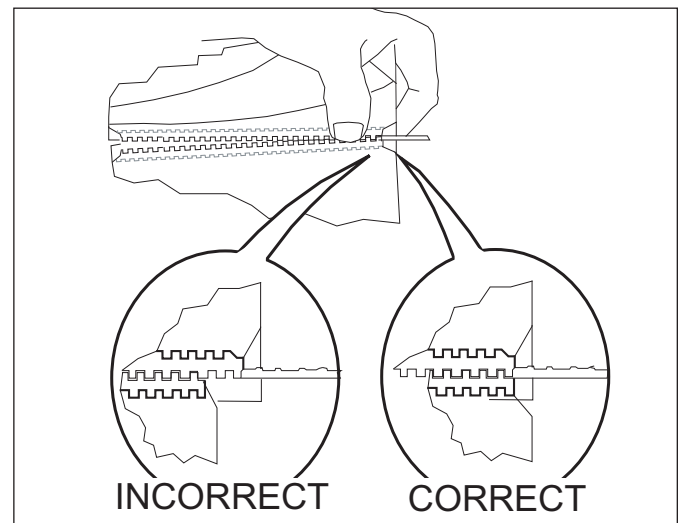


Figure 10. Aligning Belt Teeth

About the VCT-2010 Clip Style Belt

The VCT-2010 Silicone Belts have been updated to clip onto the wire conveyor belts and connect together using the standard belt pin.

For information on installing these new style belts, refer to Page 26 for complete instructions.

⚠ CAUTION ⚠

Align the ends of the Silicone Belt properly (Figure 10) or the Silicone Belt may be damaged.

⚠ CAUTION ⚠

Position the Silicone Belt between the yellow Upper and Lower Support Rods or the Silicone Belt may be damaged.

MAINTENANCE (continued)

Checking the Conveyor Belt Chains (Every 3–6 Months)

NOTE: The Bun Thickness Compression Knobs (Figure 4) must be set to 6 and 6 prior to measuring, removing or reinstalling the Conveyor Belt Chains.

MEASURING CONVEYOR BELT CHAINS

1. Remove the Butter Wheel Assembly, Bun Chute, and Heat Shield (Figure 1). Set the Bun Thickness Compression Knobs to 6 and 6.
2. Remove both Conveyor Covers and pull the Silicone Belt Pin out of the zipper (Figure 9).
3. See Figure 11. With the belt wraps removed, locate the top Idler Shafts for the front and rear conveyors. There is an oval cut-out on the chassis of the unit. The top Idler Shafts should be in the middle of the oval cut out or lower. If the shaft is higher, remove a link from the conveyor chain. In the example shown, a link does NOT need to be removed.

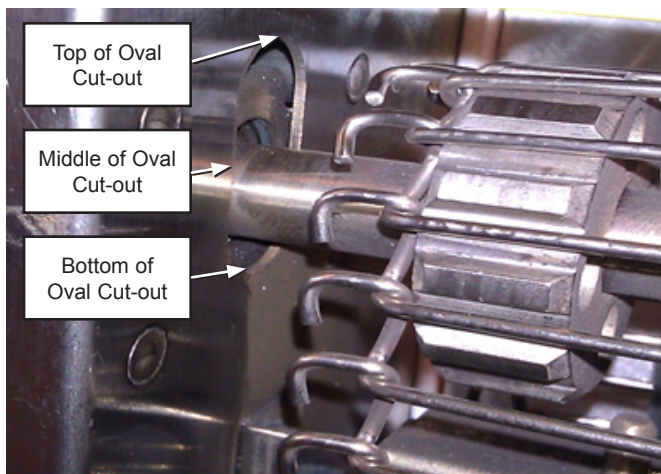


Figure 11. Measuring Conveyor Belt Chain

REMOVING CONVEYOR BELT CHAIN LINKS

1. Turn the power off, unplug the power cord, and allow the unit to cool.
2. Remove the Butter Wheel Assembly, Bun Chute, and Heat Shield. Set the Bun Thickness Compression Knobs to 6 and 6.
3. Remove the Conveyor Cover(s) and pull the Silicone Belt Pin out of the zipper. Remove the Silicone Belt(s).
4. Locate the two Master Links (Figure 12).
5. Remove the Master Link on both the left and right side of the chain.
6. Remove one complete link from the chain.
7. Replace the Master Links on both the left and right side of the chain. This connects the two ends of the chain together.

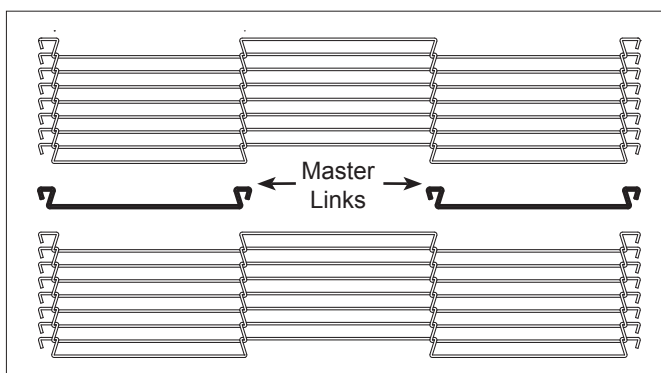


Figure 12. Conveyor Belt Chain

NOTE: The ends of the Master Links must point down (Figure 13).

8. Replace the Silicone Belt(s). Secure with the Silicone Belt Pin.

NOTE: Make sure the Conveyor Belt Chain and Silicone Belt are installed between the yellow Upper and Lower Support Rods.

9. Reinstall the Conveyor Cover(s), Butter Wheel Assembly, Bun Chute, and Heat Shield.
10. Set the Bun Thickness Compression Knobs to 3 and 4. Return the unit into service.

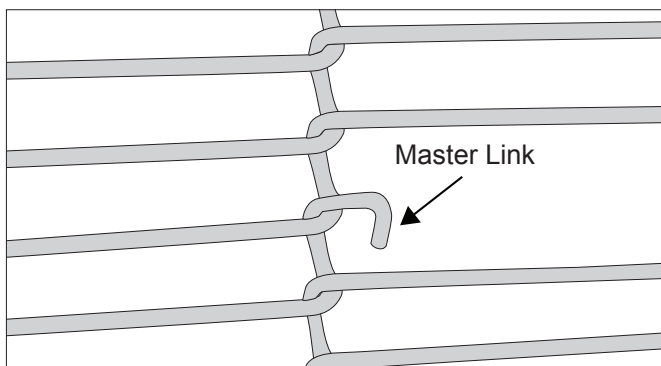


Figure 13. Removing Conveyor Belt Chain

MAINTENANCE (continued)

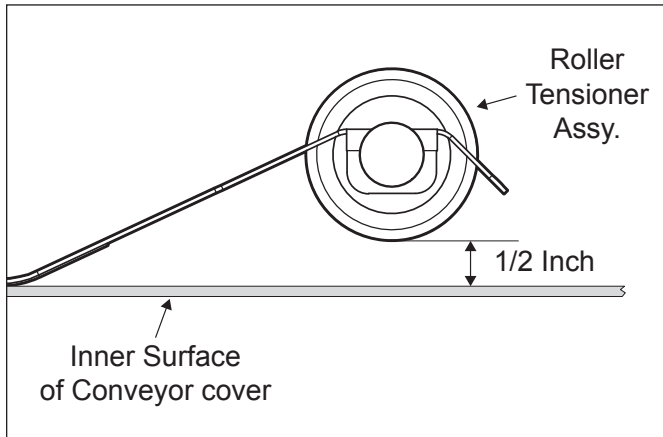


Figure 14. Measuring Roller Tensioner

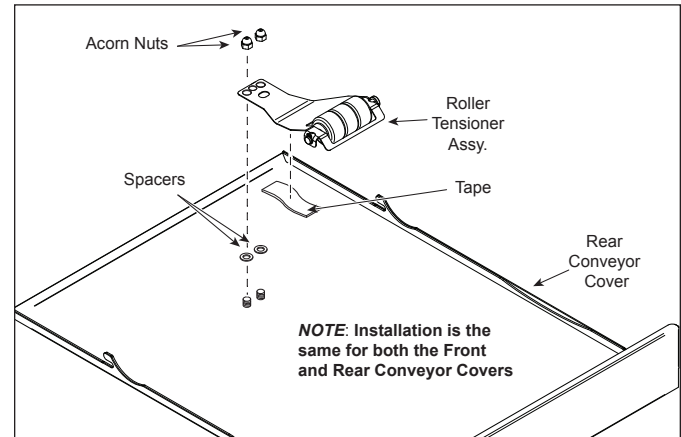


Figure 15. Measuring Roller Tensioner

REPLACING THE CONVEYOR BELT CHAINS

1. Turn the unit off, unplug the power cord, and allow the unit to cool.
2. Remove the Butter Wheel Assembly, Bun Chute, and Heat Shield (Figure 1). Set the Bun Thickness Compression Knobs to 6 and 6.
3. Remove the Conveyor Cover(s) and pull the Silicone Belt Pin out of the zipper (Figure 9).
4. Remove the Silicone Belt(s).
5. Locate the two Master Links on the Conveyor Belt Chain and remove both the left and the right Master Link.
6. Remove the existing Conveyor Belt Chain(s).
7. Place the new Conveyor Belt Chain(s) on the top sprockets with the hook ends down.

NOTE: The ends of the hooks must point down (Figure 13).

8. Install the Conveyor Belt Chain around the top and lower sprockets and connect by replacing both the left and the right Master Links.
9. Reinstall the Silicone Belt(s).
10. Reinstall the Conveyor Cover(s), Butter Wheel Assembly, Bun Chute, and Heat Shield.
11. Set the Bun Thickness Compression Knobs to 3 and 4.
12. Return the unit to service.

Checking the Roller Tensioners (every 3–6 months)

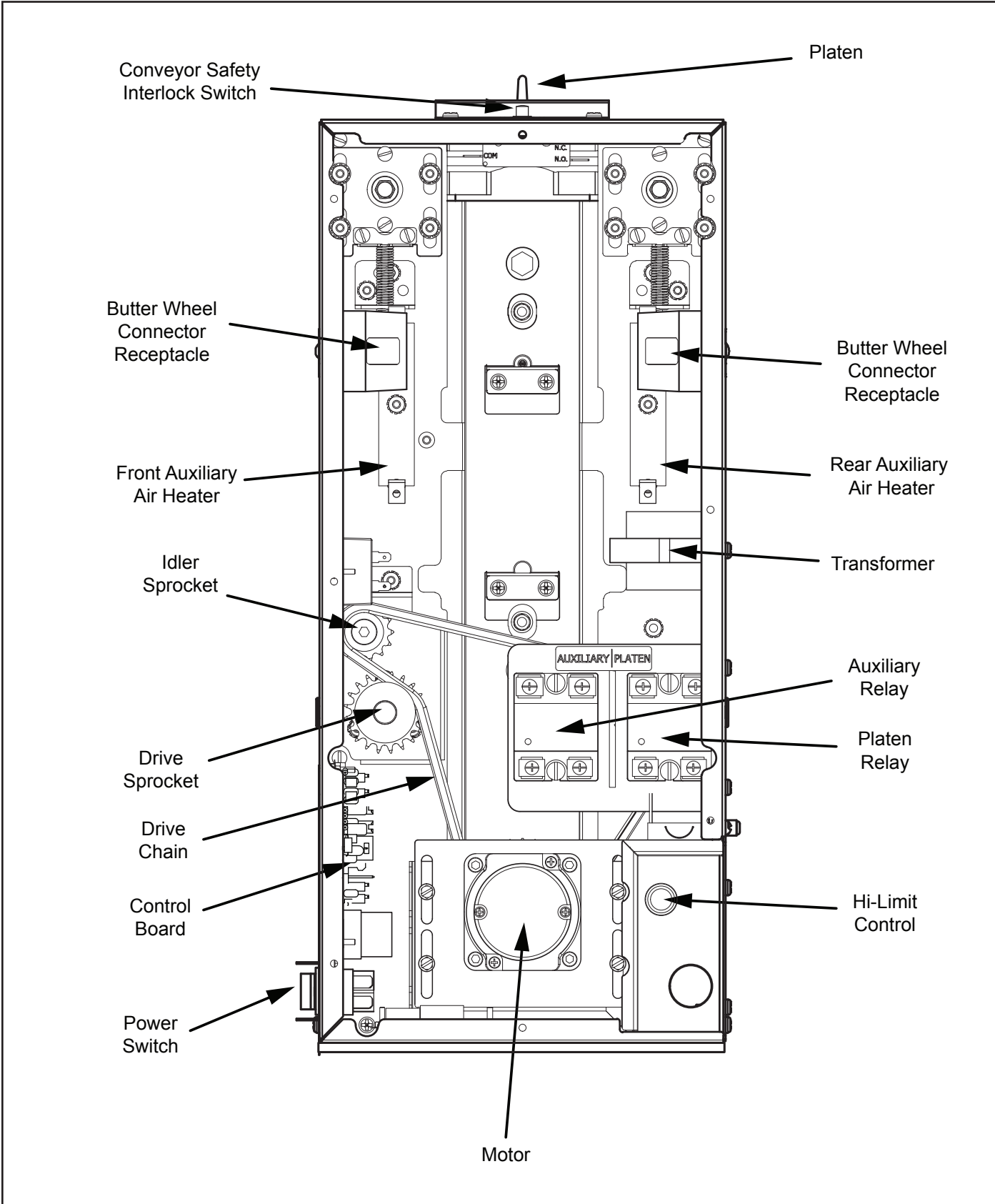
MEASURING THE ROLLER TENSIONERS

1. Turn the power off, unplug the power cord, and allow the unit to cool.
2. Remove the Butter Wheel Assembly and Heat Shield.
3. Remove the front and rear Conveyor Covers.
4. Measure the Roller Tensioner on both inner Conveyor Covers (Figure 14).
5. The space between the inner Conveyor Cover and bottom of the Tensioner wheel should be no larger than 1/2".
6. Adjust or replace the Tensioners as needed.
7. Reinstall the front and rear Conveyor Covers.
8. Reinstall the Heat Shield and Butter Wheel Assembly.
9. Plug in the power cord and test the unit before returning it to service.

REPLACING/ADJUSTING THE ROLLER TENSIONERS

1. Remove the acorn nuts and old Roller Tensioner Assembly.
2. Install the new Tensioner Assembly according to Figure 15.
3. Make sure the spacers are placed inside the Tensioner arm. The spacers allow the Tensioner to pivot freely.
4. Make sure there is 1/2" between the bottom of the Tensioner wheel and the inside of the Conveyor Cover.

TROUBLESHOOTING



TROUBLESHOOTING (continued)

⚠ WARNING ⚠

To avoid possible personal injury and/or damage to the unit, inspections, tests and repairs of electrical equipment should be performed by qualified service personnel. The unit should be unplugged when servicing, except when electrical tests are required. Use extreme care during electrical circuit tests. Live circuits will be exposed.

Problem	Possible Cause	Corrective Action
Control Display flashes "LO" continuously. Buns not toasting properly.	Platen temperature is below 440°F (226°C).	Allow the unit to warm up for 30 minutes and then recheck. If the Control Display still reads "LO", contact your maintenance person or Authorized Service Agency for service.
Control Display flashes "LO" continuously. Buns burn.	Failed Platen Thermocouple.	Contact your maintenance person or Authorized Service Agency for service.
	Failed Control Board.	
Control Display flashes "PO" continuously.	The power to the unit is below 190 volts.	Turn the power off and then on. If the display still shows "PO", check the power cord, plug, and outlet for damage.
	Failed Control Board.	Reset the Circuit Breakers.
	Failed Transformer.	Contact your maintenance person, Authorized Service Agency, or electrician for service.
Control Display flashes "CHEC" continuously.	Control Compartment ambient temperature is above 140°F (60°C).	Verify side vents on toaster are unblocked and not near other heating appliances. If problem still persists, contact your maintenance person or Authorized Service Agency for service.
	Failed Cooling Fan.	
	Failed Control Board.	
Control Display flashes "HI" continuously. Buns burn.	Failed Platen Solid State Relay.	Contact your maintenance person or Authorized Service Agency for service.
	Failed Control Board.	
	Failed Platen Thermocouple.	
Control Display flashes "ERR 9" continuously. Buns not toasting properly.	Loose Platen Thermocouple connection on Control Board or the Platen Thermocouple is open.	Re-secure the Platen Thermocouple connection to the Control Board. If the Control Display still reads "ERR 9", check the Thermocouple for continuity.
	Failed Control Board.	Contact your maintenance person or Authorized Service Agency for service.
Control Display flashes "HI" and "USE" after 20–30 minutes.	Loose Auxiliary Thermocouple connection on Control Board or Auxiliary Thermocouple is open.	Re-secure the Auxiliary Thermocouple connection to the Control Board. If the Control Display still reads "HI" and "USE", check Thermocouple for continuity. Contact your maintenance person or Authorized Service Agency for service.
	Faulty Auxiliary Solid State Relay.	Contact your maintenance person or Authorized Service Agency for service.
Control Display flashes "StoP".	Mechanical bind in one or both conveyors.	Enter "user mode" to check the motor speed. Check both conveyors for mechanical binds. Test the motor. Replace necessary parts. Contact your maintenance person or Authorized Service Agency for service.
	Defective ball bearings.	
	Conveyor chains loose or damaged.	
	Drive chain or sprockets damaged.	
	Defective motor.	
Defective control board.		

TROUBLESHOOTING (continued)

Problem	Possible Cause	Corrective Action
Control Display flashes "SpEd".	Mechanical bind in one or both conveyors.	Enter User Mode to check motor speed. Check both conveyors for mechanical binds. Replace necessary parts. Contact your maintenance person or Authorized Service Agency for service.
	Damaged ball bearings.	
	Conveyor chains loose or damaged.	
	Drive chain or sprockets damaged.	
No Control Display.	Power cord not plugged in.	Plug power cord into the proper electrical outlet.
	Hi-Limit Control has tripped.	Allow unit to cool and reset the Hi-Limit Control. If it trips again, contact your maintenance person or Authorized Service Agency.
	Circuit Breakers turned off or tripped. Damaged electrical outlet, plug, or cord. Power Switch damaged.	Reset Circuit Breakers. If they trip again, check the power cord, plug, and outlet for damage. Contact your maintenance person, Authorized Service Agency, or electrician for service.
	Safety Interlock Switch is not activated.	Reposition the Heat Shield properly.
	Heat Shield is bent or damaged.	Replace Heat Shield (P/N 0012541).
	Faulty Transformer.	Replace Transformer.
Conveyor does not turn.	Damaged or Missing Roller Tensioner(s).	Adjust or replace Roller Tensioner(s).
	Conveyor Belt/Chain has stretched. Chain skipping on sprockets.	Measure and adjust the Conveyor Belt Chains as described in the Maintenance section of this manual.
	Motor Drive Chain came off Sprocket(s).	Reinstall Drive Chain.
	Drive Chain needs lubrication.	Lubricate chain with Lubit-8 (P/N 2140152).
	Drive Motor has failed.	Contact your maintenance person or Authorized Service Agency for service.
Buns not toasting adequately.	Compression Settings are incorrect.	Use the recommended settings. Set Heel to 3 and Crown to 4.
	Temperature Setting is incorrect.	Verify that the Platen (SP-P) is set to 550°F (288°C) and the Auxiliary (SP-A) is set to 380°F (193°C). For making changes to the setpoint temperature, see the Installation section of this manual.
	Release Sheet is worn or needs cleaning (replace every 3–5 weeks).	Inspect Release Sheet for cleanliness, worn spots, tears, or wrinkles. Clean or replace Release Sheet as described in the Maintenance section of this manual.
	Silicone Belts are worn or need cleaning (replace every 2–4 months).	Replace or clean Silicone Belts as described in the Maintenance section of this manual.
	Silicone Belts are not tacky/sticky.	Replace or clean Silicone Belts as described in the Maintenance section of this manual.
	Buns do not meet specifications.	Contact your bun supplier.

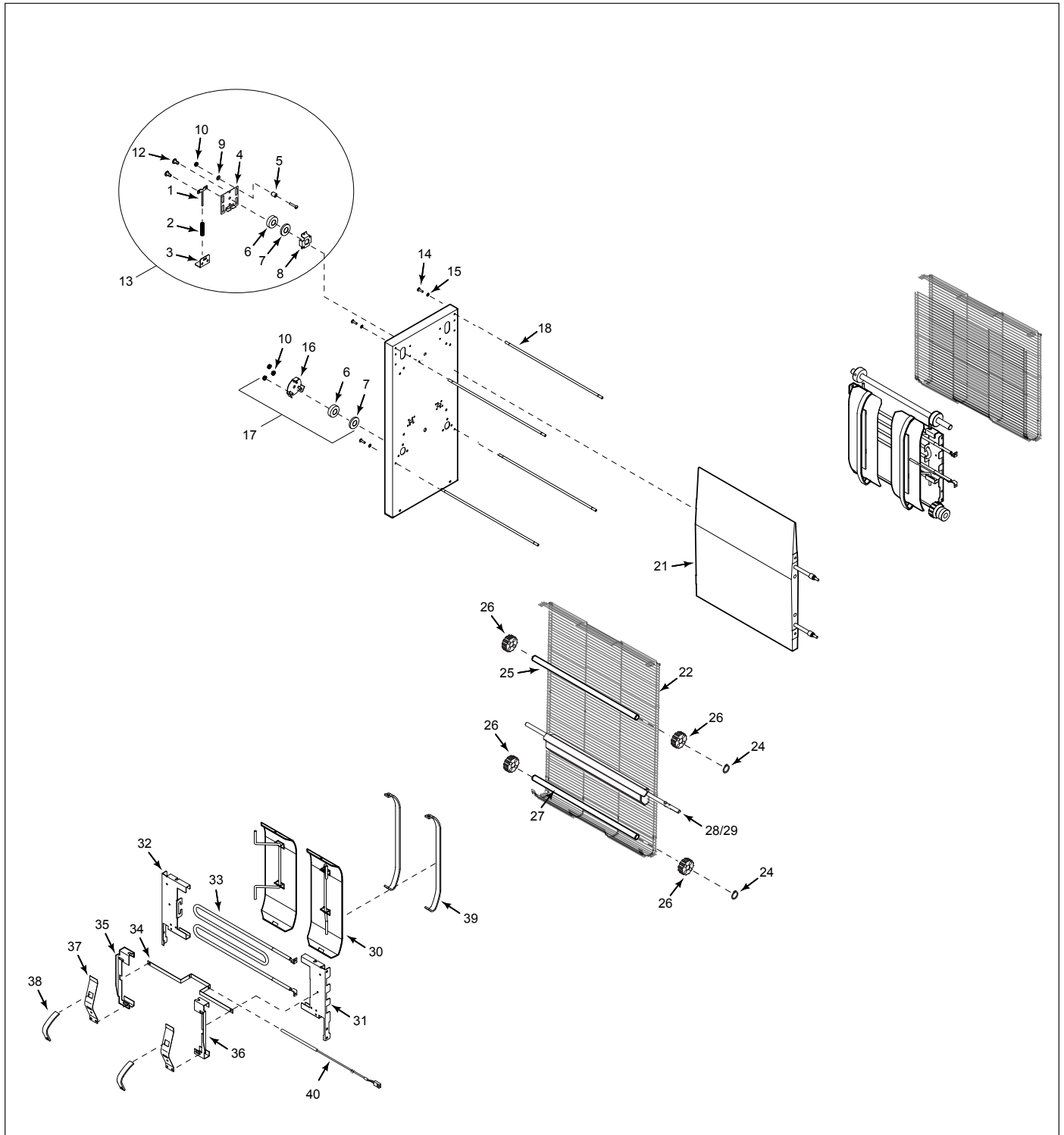
TROUBLESHOOTING (continued)

Problem	Possible Cause	Corrective Action	
Crowns and/or Heels must be forced into the toaster. Buns sticking and burning.	Silicone Belts not being cleaned properly.	Clean Silicone Belts as described in the Maintenance section of this manual.	
	Silicone Belts are not tacky/sticky (replace every 2–4 months).	Clean Silicone Belts. If the Silicone Belts are too worn, replace them as described in the Maintenance section of this manual.	
	Silicone Belts are dirty, worn, or damaged (replace every 2–4 months).	Clean or replace Silicone Belts as described in the Maintenance section of this manual.	
	Release Sheet is not being cleaned properly.	Clean both sides of the black and silver Release Sheet as described in the Maintenance section of this manual.	
	Release Sheet is not being reversed as required.	Reverse the Release Sheet or replace Release Sheet as described in the Maintenance section of this manual.	
	Release Sheet is dirty, worn, or damaged (replace every 3–5 weeks).	Clean or replace the Release Sheet as described in the Maintenance section of this manual.	
	Conveyor Belt Chains are skipping on Sprockets.	Measure and adjust the Conveyor Belt Chains as described in the Maintenance section of this manual.	
	Conveyor Safety Interlock Switch is not being activated by the Heat Shield.		Heat Shield is ajar. Reposition Heat Shield.
			Heat Shield is damaged. Replace if necessary. If the Conveyor Safety Interlock Switch is damaged, contact your maintenance person or Authorized Service Agency for service.
	Silicone Belts slipping over Conveyor Belt Chains.	Remove Silicone Belts and clean the Conveyor Belt Chain links and Silicone Belts as described in the Maintenance section of this manual.	
	Roller Tensioner(s) damaged or missing.	Reinstall or replace Roller Tensioner(s) as described in the Maintenance section of this manual.	
	Drive Motor stalls intermittently.	Contact your maintenance person or an Authorized Service Agency for service.	
	Compression Settings are incorrect.	Use the recommended settings. Set Heel to 3 and Crown to 4.	
Buns are not inserted into the toaster properly.	Buns must be inserted with the cut sides facing each other on the correct Heel or Crown side.		
New Conveyor Silicone Belts do not fit.	Compression Settings are incorrect.	Set Bun Thickness Compression Knobs to 6 and 6 when replacing Silicone Belts or when adjusting Conveyor Belt Chains.	
	Silicone Belts not installed correctly.	Install Silicone Belts between the Support Rods with the zipper flap exposed and hanging down.	
	Silicone Belts are damaged or are the wrong type for your unit.	Replace with OEM P/N 7000898 only.	

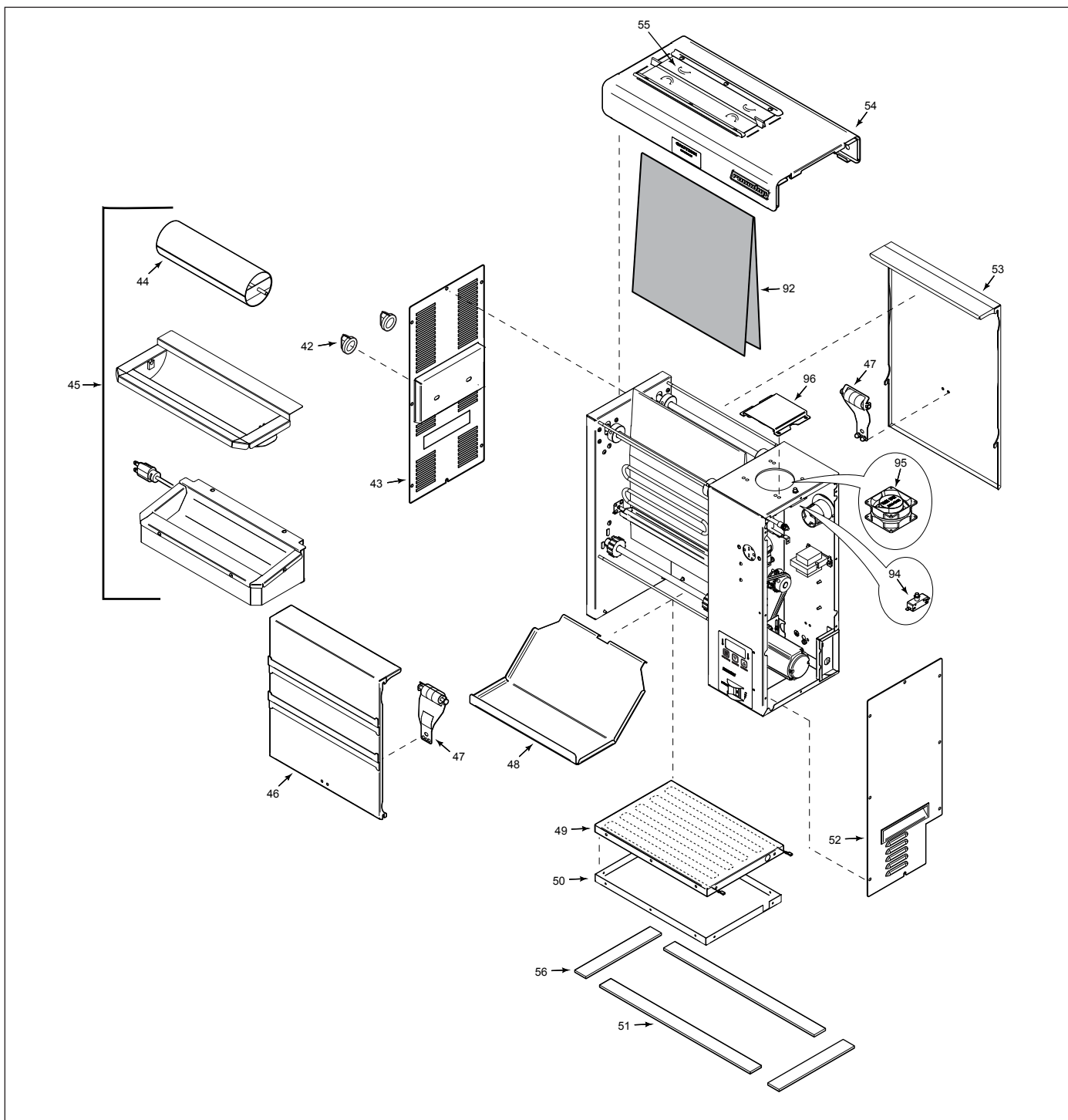
TROUBLESHOOTING (continued)

Problem	Possible Cause	Corrective Action
Toaster makes unusual sounds.	Compression Settings are too tight.	Set Bun Thickness Compression Knobs to the correct (or larger) setting.
	Silicone Belts are installed incorrectly.	Silicone Belts must be installed as described in the Maintenance section of this manual.
	Silicone Belt Pin rubbing on housing.	Center the Pin in the Silicone Belt zipper.
	Roller Tensioner(s) bent or missing.	Measure, adjust, or replace the Roller Tensioner(s) as described in the Maintenance section of this manual.
	Conveyor Belt Chains have stretched.	Measure and adjust the Conveyor Belt Chains as described in the Maintenance section of this manual.
	Conveyor Belt Chains adjusted incorrectly.	
	Sugar and/or carbon has accumulated inside the Silicone Belt and between the Conveyor Belt Chain and Tensioner Slide Rails.	Remove Silicone Belts, clean Conveyor Belt Chain links just as you clean the Silicone Belts daily, and then clean the Slide Rails on the Tensioners. Next, clean the Silicone Belt on both sides before reinstalling it.
	Motor Drive Chain needs lubrication.	Lubricate the Drive Chain carefully with Lubit-8 (P/N 2140152) at least once a year.
A Conveyor Shaft bearing is binding.	Contact your maintenance person or Authorized Service Agency for service.	

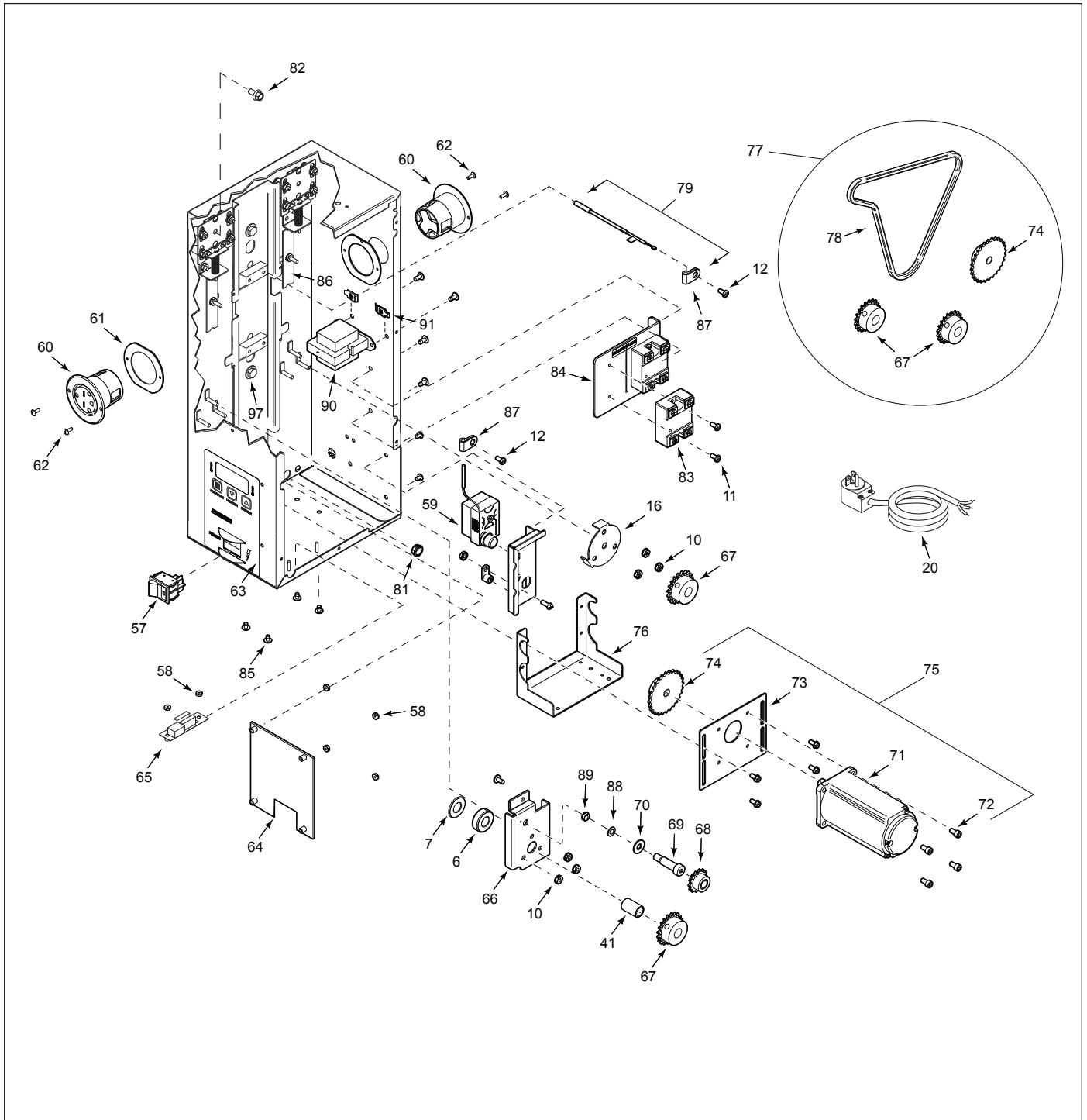
REPLACEMENT PARTS



REPLACEMENT PARTS (continued)



REPLACEMENT PARTS (continued)



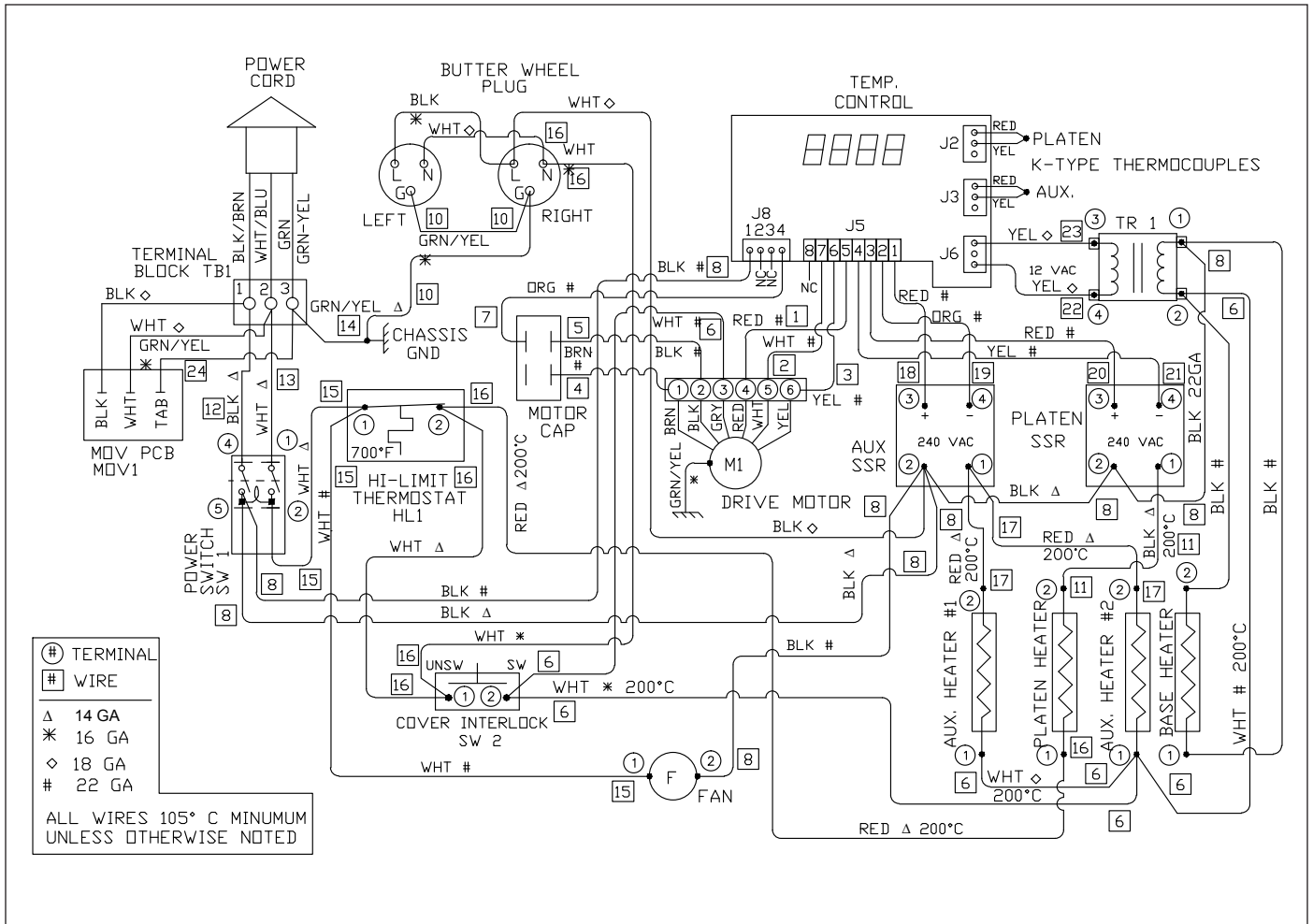
REPLACEMENT PARTS (continued)

Item	Part No.	Description	Qty.
1	0505987	Spring Guide	4
2	060P153	Compression Spring (Pkg. of 4)	4
3	0505967	Spring Support Bracket	4
4	0506065	Retainer Plate	2
5	308P224*	Spacer 3/8" OD x .515" Lg.	-
6	7000777	Ball Bearing Kit (Two-Pack)	-
7	0504320	Spacer, .781" x 1.125" x .06"	2
8	0506066	Bearing Retainer Bracket	4
9	308P223*	Washer, Flat #8	-
10	308P143*	Nut, Hex KEPS #8-32 Steel	-
11	308P115*	Mach. Screw #8-32 x 3/8"	-
12	308P144*	Mach. Screw #8-32 x 1/4" with #6 Head	-
13	7000778	Idler Bearing Assembly Kit (Incl. #1-12)	-
14	306P105*	Mach. Screw #6-32 x 1/2"	-
15	306P102*	Washer, Int. Tooth #06	-
16	0506067	Bearing Retainer	2
17	7000776	Bearing Retainer Kit (Incl. #6, 7, 10 & 16)	1
18	7000774	Support Rod Kit (Incl. #14 & 15)	4
19	7000898	Silicone Belt Kit (not shown)	1
20	0700737	Power Cord (250 Volt, 20 Amp.) (9210314 Only)	1
	0700543	Power Cord (250 Volt, 20 Amp.) (9210315 Only)	1
21	7000757	Platen (208V/1900W) Kit	-
22	7000758	Wire Belt Kit	-
23	7000770	Master Link Kit (Four-Pack)	-
24	300P123*	Retaining Ring	-
25	2150300	Idler Shaft	2
26	7000771	Sprocket, 1/2" Bore Kit (Eight-Pack)	-
27	2150299	Drive Shaft	2
28	0021688	Cam Weldment, Front Side	1
29	0021679	Cam Weldment, Back Side	1
30	0021680	Tensioner Assembly	1
31	0503496	Bracket Tensioner Right	2
32	0503497	Bracket Tensioner Left	2
33	4030349	Heating Element (208V/675W)	2
34	0506072	Bracket, Auxiliary Thermocouple	1
35	0504700	Bracket Retainer Left	2
36	0504699	Bracket Retainer Right	2
37	0505968	Tensioner	4
38	7000780	Short Slider Kit (Two-Pack)	-
39	7000779	Long Slider Kit (Two-Pack)	-
40	7000775	Thermocouple Type "K", 1/8" Dia. Kit (Incl. #34)	-
41	2120210	Aluminum Spacer	1
42	2100253	Knob	2
43	0021681	End Housing Panel Weldment	1
44	0021659	Butter Roller Weldment Diamond Pattern (incl. w/ #45)	1
45	7000806	Butter Wheel Kit	1
46	0012539	Conveyor Cover Front Assy. (Incl. #47)	1
47	7000759	Roller Tensioner Kit (Two-Pack)	-
48	0505966	Bun Chute	1
49	0012534	Base Heater Assy.	1

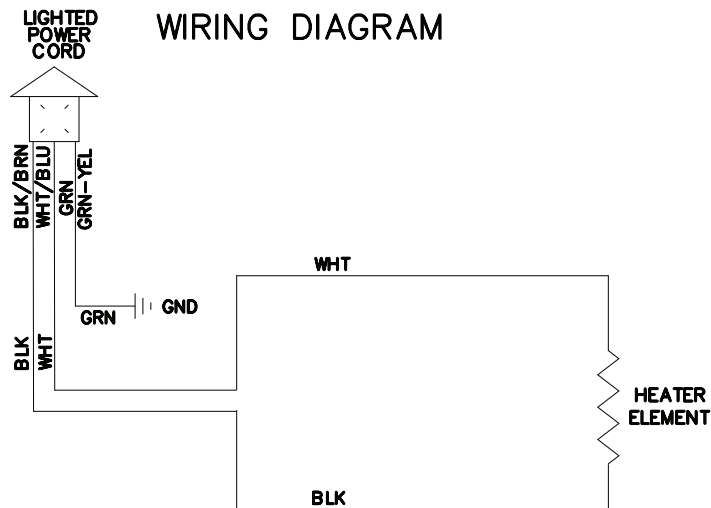
Item	Part No.	Description	Qty.
50	0506069	Inner Base	1
51	0200296	Base Gasket 17.25" Lg.	2
52	0012484	Control Housing Cover Assy.	1
53	0012540	Conveyor Cover Rear Assy. (Incl. #47)	1
54	0012541	Heat Shield Assy.	1
55	7000578	Damper Replacement Kit (Incl. Two Sheets and Four Springs)	-
56	0200293	Base Gasket 8.5" Lg.	2
57	7000542	Rocker Switch Kit	-
58	304P105*	Nut, Hex "KEPS" #4-40	-
59	4030332	Hi-Limit Thermostat	1
60	4051005	Receptacle (250V/15A)	2
61	0505980	Outer Retainer	2
62	306P103*	Mach. Screw #6-32 x 3/8"	-
63	1001390	Control Label	1
64	7000773	Control Board Kit	-
65	4070154	Varistor Board	1
66	0506064	Idler and Bearing Retainer	1
67	2150181	Sprocket 25B20 1/2" Bore	2
68	0011299	Sprocket/Bearing Assy.	1
69	331P103*	Shoulder Bolt 3/8" x 1" 5/16-18 Thrd.	-
70	212P118*	Flat Washer .316" ID x .687" OD x .047"	-
71	4000199	Gear Motor	1
72	3100199	Screw #10-32 x 3/8 Lg. Socket Head	4
73	0505964	Motor Mounting Plate	1
74	2150295	Sprocket 25B28 .395" Bore	1
75	7000772	Motor Replacement Kit (Incl. #71, 72, 73 & 74)	-
76	0505956	Motor Mounting Bracket	1
77	7000769	Drive Sprocket and Chain Kit (Incl. #74, 78 & two of 67)	-
78	2150294	Drive Chain	1
79	7000791	Thermocouple Kit, Type "K" 3/16" Dia. (Incl. #87)	1
80	4010221	Cap, MP, Motor Run (not shown)	1
81	0400111	Shorty Bushing 1/2"	1
82	3250176	Screw, Flange Hex Head Cap	2
83	4051010	Relay, Solid State 50A Kit	2
84	0503359	Relay Bracket	1
85	308P157*	Screw #8-32 x 3/8"	-
86	0503150	Heater Clip	2
87	2110197	Metal Cable Clip	2
88	331P106*	Lock Washer, 5/16"	-
89	331P101*	Nut, Hex 5/16" x 18	-
90	4010187	Transformer (240V)	1
91	300P102*	Nut, Speed #8-32 "U"	-
92	7000625	Release Sheet (Pack of 3)	-
94	7000400	Interlock Switch Kit	-
95	4000138	Fan, Axial (220/230V)	1
96	0503775	Fan Duct	2
97	7000790	Platen Bolt Kit (4-Pack)	1

* Only available in packages of 10.

WIRING DIAGRAM



WIRING DIAGRAM



VCT-2010 Clip Style Belt Instructions

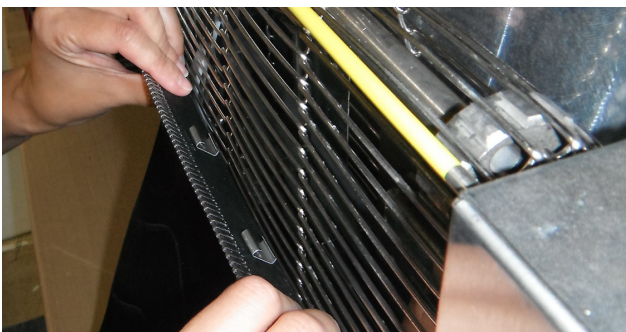
1 With power off and toaster cool, set crown and heel compression knobs to 6 & 6. Remove top cover and both conveyor covers. Remove current belts by either removing lacing pin or using scissors or razor knife, carefully cut the belt free of the wire, drive belt.



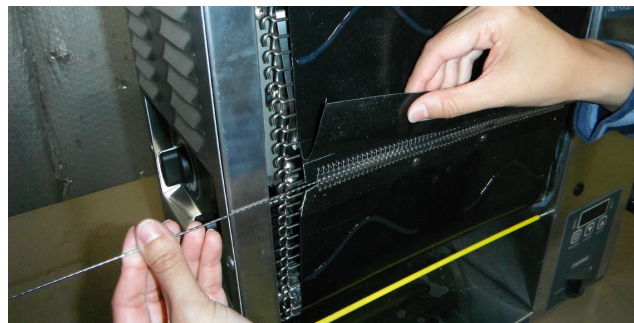
2 Pick belt up from the center and feed flap end beneath yellow bar and lower belt until the other end of the belt is on the bottom of the toaster. Feed belt from the bottom through bottom yellow bar until both ends are approximately in the middle of the toaster.



3 Hook the bottom of each clip to wire belt and gently push the top of the belt upward to clip the top of the clip to the next metal wire. Make sure clips are fastened to the center section of the wire belt.



4 Assure both clips are attached using two wires only to the wire belt. Then position both ends of the new belt together and line up so the lacing is even. Insert the pin to join both sides of belt together.



5 Verify belt alignment is even from side to side of each belt. Set compression knobs to recommended settings of 4 for the crown and 3 for the heel. Reinstall both conveyor covers and top cover.



AA[™]
A.J. Antunes & Co.
We exist to make our customers successful.

P/N 1011208 7/13

LIMITED WARRANTY

Equipment manufactured by Roundup Food Equipment Division of A.J. Antunes & Co. has been constructed of the finest materials available and manufactured to high quality standards. These units are warranted to be free from electrical and mechanical defects for a period of one (1) year from date of purchase under normal use and service, and when installed in accordance with manufacturer's recommendations. To insure continued operation of the units, follow the maintenance procedures outlined in the Owner's Manual. During the first 12 months, electro-mechanical parts, non-overtime labor, and travel expenses up to 2 hours (100 miles/160 km), round trip from the nearest Authorized Service Center are covered. During the first 24 months, coverage for parts only to include the following components: Generator Casting, Solid State Control, and Motor.

1. This warranty does not cover cost of installation, defects caused by improper storage or handling prior to placing of the Equipment. This warranty does not cover overtime charges or work done by unauthorized service agencies or personnel. This warranty does not cover normal maintenance, calibration, or regular adjustments as specified in operating and maintenance instructions of this manual, and/or labor involved in moving adjacent objects to gain access to the equipment. This warranty does not cover consumable/wear items. This warranty does not cover damage to the Load Cell or Load Cell Assembly due to abuse, misuse, dropping of unit/shock loads or exceeding maximum weight capacity (4 lbs). This warranty does not cover water contamination problems such as foreign material in water lines or inside solenoid valves. It does not cover water pressure problems or failures resulting from improper/incorrect voltage supply. This warranty does not cover Travel Time & Mileage in excess of 2 hours (100 miles/160 km) round trip from the nearest authorized service agency.
2. Roundup reserves the right to make changes in design or add any improvements on any product. The right is always reserved to modify equipment because of factors beyond our control and government regulations. Changes to update equipment do not constitute a warranty charge.
3. If shipment is damaged in transit, the purchaser should make a claim directly upon the carrier. Careful inspection should be made of the shipment as soon as it arrives and visible damage should be noted upon the carrier's receipt. Damage should be reported to the carrier. This damage is not covered under this warranty.
4. Warranty charges do not include freight or foreign, excise, municipal or other sales or use taxes. All such freight and taxes are the responsibility of the purchaser.
5. THIS WARRANTY IS EXCLUSIVE AND IS IN LIEU OF ALL OTHER WARRANTIES, EXPRESSED OR IMPLIED, INCLUDING ANY IMPLIED WARRANTY OR MERCHANTABILITY OR FITNESS FOR A PARTICULAR PURPOSE, EACH OF WHICH IS HEREBY EXPRESSLY DISCLAIMED. THE REMEDIES DESCRIBED ABOVE ARE EXCLUSIVE AND IN NO EVENT SHALL ROUNDUP BE LIABLE FOR SPECIAL CONSEQUENTIAL OR INCIDENTAL DAMAGES FOR THE BREACH OR DELAY IN PERFORMANCE OF THIS WARRANTY.



A.J. Antunes & Co.

We exist to make our customers successful.

A.J. Antunes & Co.
Headquarters/Manufacturing
Carol Stream, Illinois 60188 USA
Phone: (630) 784-1000
Toll Free: (800) 253-2991
Fax: (630) 784-1650

Antunes Equipment
Manufacturing (Suzhou) Ltd.,
Suzhou, Jiangsu, China 215011
Phone: 86-512-6841-3637
Toll Free: 400-0-7878-22
Fax: 86-512-6841-3907

www.ajantunes.com