

MANUFACTURING

NUMBERS:

9210312

roundup
by A.J. Antunes & Co.®



P/N 1011097 Rev. A 03/12

***VERTICAL CONTACT
TOASTER***
Model VCT-2010



Owner's Manual

TABLE OF CONTENTS

Owner Information	2	Error Codes	10
General	2	Maintenance	11
Warranty Information	2	Daily	11
Owner information (continued)	3	Replacing the Release Sheet (Every 3-5 Weeks) ...	12
Service/Technical Assistance	3	Replacing the Belt Wraps (Every 2–4 Mo.)	12
Specifications	5	Checking the Conveyor Belt Chains	
Dimensions	5	(Every 3–6 Months)	13
Electrical Ratings	5	Maintenance (continued)	14
Electrical Cord & Plug Configurations	5	Checking the Roller Tensioners	
Model & Mfg. No.	5	(every 3–6 months)	14
Description	5	Troubleshooting	15
Configuration	5	Wiring Diagram	24
Installation	7	NOTES	25
Unpacking	7	Limited Warranty	28
Equipment Setup	7		
Assembling the Unit	7		
Operation	8		
Operating Instructions	8		
Temperature Adjustments	8		

OWNER INFORMATION

General

The Vertical Contact Toaster Model VCT-2010 is designed for contact toasting of buns. The toaster design allows the operator to place buns on both sides of the heated platen at the same time. Buns are placed into the top of the toaster and uniform, golden brown, warm buns are then retrieved at the base of the toaster.

This manual provides the safety, installation, and operating procedures for the Vertical Contact Toaster Model VCT-2010. We recommend that all information contained in this manual be read prior to installing and operating the unit.

Your Vertical Contact Toaster Model VCT-2010 is manufactured from the finest materials available and assembled to Roundup’s strict quality standards. This unit has been tested at the factory to ensure dependable trouble-free operation.

Warranty Information

Please read the full text of the Limited Warranty in this manual.

If the unit arrives damaged, contact the carrier immediately and file a damage claim with them. Save all packing materials when filing a claim. Freight damage claims are the responsibility of the purchaser and are not covered under warranty.

The warranty does NOT extend to:

- Damages caused in shipment or damage as result of improper use.
- Installation of electrical service.
- Normal maintenance as outlined in this manual.
- Malfunction resulting from improper maintenance.
- Damage caused by abuse or careless handling.
- Damage from moisture into electrical components.
- Damage from tampering with, removal of, or changing any preset control or safety device.

IMPORTANT! Keep these instructions for future reference. If the unit changes ownership, be sure this manual accompanies the equipment.

OWNER INFORMATION (continued)

Service/Technical Assistance

If you experience any problems with the installation or operation of your unit, contact your local Roundup Authorized Service Agency.

Fill in the information below and have it handy when calling your Authorized Service Agency for assistance. The serial number is on the specification plate located on the rear of the unit.

Purchased From: _____

Date of Purchase: _____

Model No.: _____

Serial No.: _____

Mfg. No.: _____

Refer to the service agency directory included with your unit.

Authorized Service Agency

Name: _____

Phone No.: _____

Address: _____

Use only genuine Roundup replacement parts in this unit. Use of replacement parts other than those supplied by the manufacturer will void the warranty. Your Authorized Service Agency has been factory trained and has a complete supply of parts for this toaster.

You may also contact the factory at **1-877-392-7854** (toll free in the U.S.) or **630-784-1000** if you have trouble locating your Authorized Service Agency.

IMPORTANT

A.J. Antunes & Co. reserves the right to change specifications and product design without notice. Such revisions do NOT entitle the buyer to corresponding changes, improvements, additions, or replacements for previously purchased equipment.

IMPORTANT SAFETY INFORMATION

In addition to the warnings and cautions in this manual, use the following guidelines for safe operation of the unit:

- Read all instructions before using equipment.
- For your safety, the equipment is furnished with a properly grounded cord connector. Do NOT attempt to defeat the grounded connector.
- Install or locate the equipment only for its intended use as described in this manual. Do NOT use corrosive chemicals in this equipment.
- Do NOT operate this equipment if it has a damaged cord or plug, if it is not working properly, or if it has been damaged or dropped.
- This equipment should be serviced by qualified personnel only. Contact the nearest Authorized Service Agency for adjustment or repair.
- Do NOT block or cover any openings on the unit.
- Do NOT immerse cord or plug in water.
- Keep cord away from heated surfaces.
- Do NOT allow cord to hang over edge of table or counter.

The following warnings and cautions appear throughout this manual and should be carefully observed.

- Turn the power off, unplug the power cord, and allow unit to cool down before performing any service or maintenance.
- The toaster should be grounded according to local electrical codes to prevent the possibility of electrical shock. It requires a grounded receptacle with separate electrical lines protected by fuses or a circuit breaker of the proper rating.
- Bread may burn. Therefore toasters must NOT be used near or below curtains or other combustible walls and materials. Failure to maintain safe operating distances may cause discoloration or combustion.
- When installing a Conveyor Belt Wrap, be careful NOT to wrap it over the Upper and Lower Support Rods or permanent damage to belt will occur. Make sure Belt Wrap is positioned inside the Upper and Lower Support Rods.
- Make sure both ends of the Belt Wrap are aligned

evenly before installing Belt Wrap Pin.

- Failure to use Release Sheets may result in damage to the equipment and loss of warranty coverage.
- Do NOT clean this appliance with a water jet.
- If supply cord is damaged, it must be replaced by the manufacturer, its service agent, or a similarly qualified person.
- All electrical connections must be in accordance with local electrical codes and any other applicable codes.
- **WARNING, ELECTRICAL SHOCK HAZARD. FAILURE TO FOLLOW THESE INSTRUCTIONS COULD RESULT IN SERIOUS INJURY OR DEATH.**
 - Electrical ground is required on this appliance.
 - Do NOT modify the power supply cord plug. If it does not fit the outlet, have a proper outlet installed by a qualified electrician.
 - Do NOT use an extension cord with this appliance.
 - Check with a qualified electrician if you are unsure if appliance is properly grounded.

CAUTION

Failure to use Release Sheets may result in damage to the unit and loss of warranty coverage.

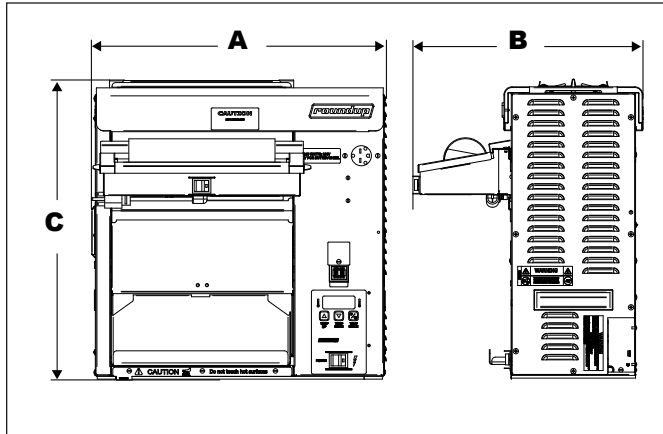
WARNING

ELECTRICAL SHOCK HAZARD. FAILURE TO FOLLOW THE INSTRUCTIONS IN THIS MANUAL COULD RESULT IN SERIOUS INJURY OR DEATH.

- Electrical ground is required on this appliance.
- Do NOT modify the power supply cord plug. If it does not fit the outlet, have a proper outlet installed by a qualified electrician.
- Do NOT use an extension cord with this appliance.
- The toaster should be grounded according to local electrical codes to prevent the possibility of electrical shock. It requires a grounded receptacle with separate electrical lines protected by fuses or a circuit breaker of the proper rating.
- Check with a qualified electrician if you are unsure if the appliance is properly grounded.

SPECIFICATIONS

Dimensions

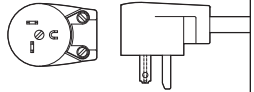


Model & Mfg. No.	Width (A)	Depth (B)	Height (C)
VCT-2010 9210312	21 1/4" (540 mm)	15 1/4" (387 mm)	24 1/4" (616 mm)

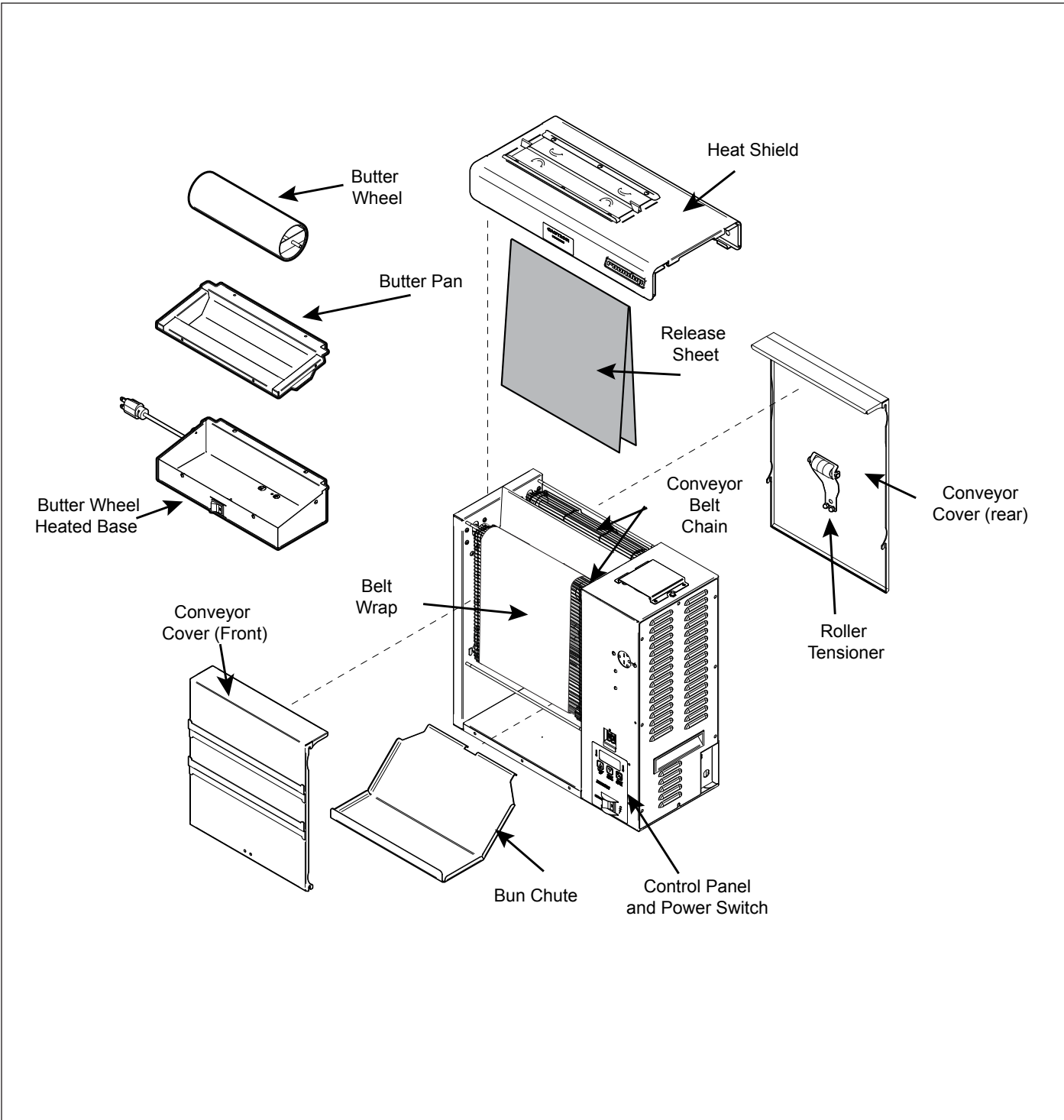
Electrical Ratings

Model & Mfg. No.	Volts	Watts	Amp.	Hz.
VCT-2010 9210312	208	3300	15.8	60

Electrical Cord & Plug Configurations

Model & Mfg. No.	Description	Configuration
VCT-2010 9210312	Power Cord Assembly 20 Amp, 250 Volt Right Angle	

SPECIFICATIONS (continued)



INSTALLATION

Unpacking

1. Remove the unit and all packing materials from shipping carton.
2. Open the Accessories Box. It should contain the following:
 - Bun Chute
 - Butter Wheel Assy. (including Roller, Butter Pan, and Heated Base)
 - Two Release Sheets
 - Owner's Manual
 - Authorized Service Agency Directory
 - Heel and Crown Label (see Step 4 under **Assembling the Unit** on this page)
3. Remove all shipping tape and protective coverings from the unit and parts.

NOTE: If any parts are missing or damaged, contact Antunes Technical Service IMMEDIATELY at 1-877-392-7854 (toll free in the U.S.) or 630-784-1000.

Equipment Setup

Before placing the toaster into service, pay attention to the following guidelines:

- Make sure power is off and the toaster is at room temperature.
- Do NOT block or cover any openings on the unit.
- Do NOT immerse cord or plug in water.
- Keep cord away from heated surfaces.
- Do NOT allow cord to hang over edge of table or counter.
- Connect the unit to the proper power supply. Refer to the specification plate for the proper voltage.

⚠ CAUTION ⚠

Bread may burn. Therefore toasters must not be used near or below curtains or other combustible walls and materials. Failure to maintain safe operating distances may cause discoloration or combustion.

⚠ CAUTION ⚠

All electrical connections must be in accordance with local electrical codes and any other applicable codes.

Assembling the Unit

NOTE: The factory has pre-installed a Release Sheet over the Platen (Figure 1). Verify that it is properly in place before proceeding.

1. Place the unit on a flat, sturdy location.
2. Install the Bun Chute so the hooks are installed over the lower rear yellow Support Rod (Figure 1).
3. Hang the Butter Wheel Heated Base on the front of the unit and install the Butter Pan and Butter Wheel inside. (Figure 1).
3. Plug the power cord on the Butter Wheel Assembly into the receptacle on the front of the unit where the Butter Wheel Assembly is mounted.
4. Place the Heel and Crown Label on the same side the Butter Wheel Assembly is attached to the unit.

IMPORTANT: Do NOT plug any other power cords into the receptacles on the toaster. These outlets are intended for the Butter Wheel ONLY.

IMPORTANT: Make sure Heat Shield is activating the Conveyor Safety Interlock Switch (Figure 1). The conveyors will not rotate unless the Heat Shield is in place and its weight is pressing down on the Conveyor Safety Interlock Switch.

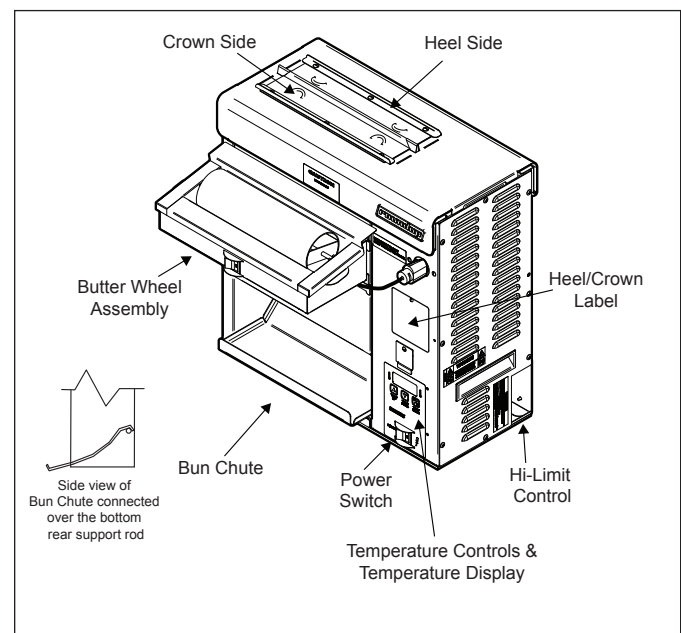


Figure 1. VCT-2010 Vertical Contact Toaster

OPERATION

Operating Instructions

NOTE: The unit includes **Bun Thickness Adjustment Controls (Figure 3)** which are factory set to 4 for heel and 6 for crown. These controls are secured by a cover.

NOTE: Recommended settings are #4 for heel and #6 for crown.

1. Turn on the power to the unit and allow it to warm up for 30 minutes before proceeding.
3. Fill the Butter Wheel pan as directed and turn on the power switch on the Butter Wheel Heated Base.

NOTE: The temperature display (Figure 2) flashes “LO” until the toaster reaches its preset operating temperature. When the toaster approaches the preset temperature of 540°F (282°C), “USE” appears in the temperature display and the unit is ready to toast buns. If “USE” does not appear in the window after approximately 30 minutes, contact your Authorized Service Agency.

4. Drop Crowns and Heels into the slot (Figure 2).

NOTE: Cut sides of heel and crown must face each other.

5. Toasted buns will drop out of the unit down the Bun Chute (Figure 2) in approximately 18 seconds.
6. Test at least 4 buns before putting the toaster into service.
7. Turn the power off for the unit and the Butter Wheel when finished toasting for the day and proceed with the **Daily Cleaning** as outlined in the Maintenance section of this manual.

Temperature Adjustments

The VCT-2010 uses a Platen Heater and two Auxiliary Air Heaters. The Platen Heater consists of a heating element built into the Platen to toast the cut side of the bun. The two Auxiliary Heaters assist in providing additional heat to the buns. The first Auxiliary Air Heater is located between the conveyor in the front of the toaster. The second Auxiliary Heater is located between the conveyor at the rear of the unit.

RECOMMENDED TEMPERATURES

Recommended temperature setting for the Platen heater is 540°F (282°C).

Recommended temperature setting for the Auxiliary Air Heaters is 400°F (204°C).

NOTE: The toaster is tested and shipped with the heaters set at the above recommended temperatures.

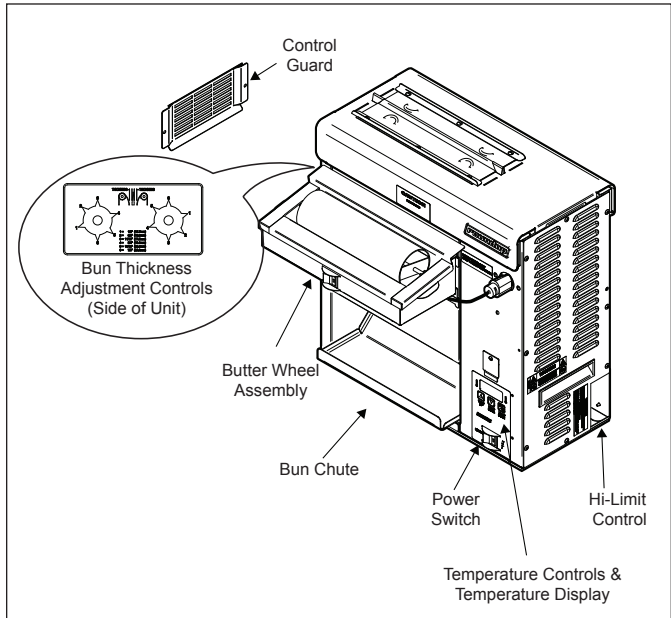


Figure 2. VCT-2010 Toaster

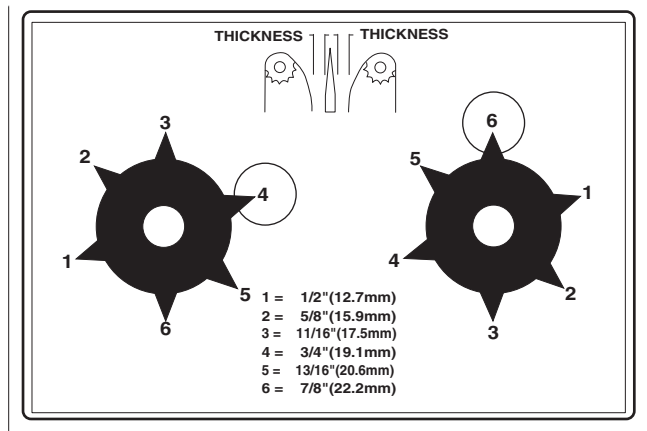


Figure 3. Preset Bun Thickness Compression Adjustment Controls

OPERATION (continued)

TEMPERATURE CONTROL PANEL

NOTE: The term “setpoint temperature” refers to the desired temperature setting.

To display the actual Platen temperature—providing it is over 440°F (227°C)—press the **TEMP UP** button.

To display the actual Auxiliary Air Heater temperature—providing it is over 360°F (182°C)—press the **TEMP DOWN** button.

To switch the temperature display between Fahrenheit (°F) and Celsius (°C), press and hold the **TEMP SCALE** button for 5 seconds.

PLATEN HEATER TEMPERATURE ADJUSTMENT

1. Turn the power on and wait for the Temperature Display to finish the power up sequence (Figure 4).
2. Press and hold both **TEMP UP** and **TEMP DOWN** buttons for over 1 second until the display flashes the Platen setpoint temperature (Figure 5), then release.
3. Press the **TEMP UP** button to raise the setpoint temperature or press the **TEMP DOWN** button to lower the setpoint temperature.

NOTE: The maximum Platen setpoint temperature is 600°F (316°C). If no change in temperature is made within 5 seconds, the display reverts back to the previous setpoint temperature.

4. Release the button when the desired setpoint temperature is displayed.

AUXILIARY AIR HEATER TEMPERATURE ADJUSTMENT

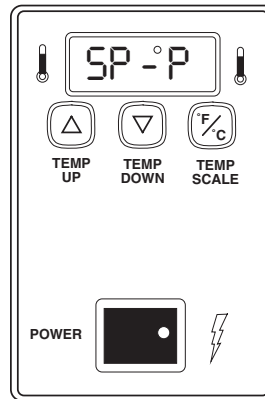
1. Turn the power on. Wait for Temperature Display to finish the power up sequence (Figure 4).
2. Press and hold both **TEMP UP** and **TEMP SCALE** buttons for over 1 second until the display flashes the setpoint temperature (Figure 6), then release.
3. Press the **TEMP UP** button to raise the setpoint temperature or press the **TEMP DOWN** button to lower the setpoint temperature.

NOTE: The maximum Auxiliary Air Heater setpoint temperature is 400°F (204°C).

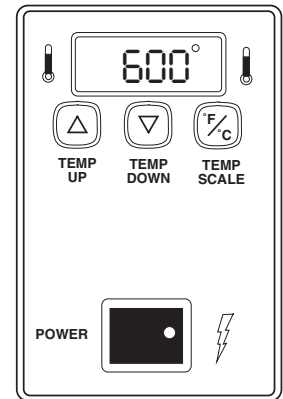
4. Release the button when the desired setpoint temperature is displayed.

NOTE: If no change in temperature is made within 5 seconds, the display reverts back to the previous setpoint temperature.

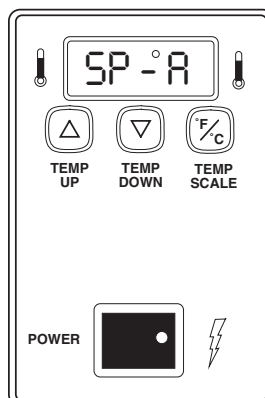
“Heat On” LED will blink on/off during warm-up and when either platen or auxiliary air heaters are calling for heat.



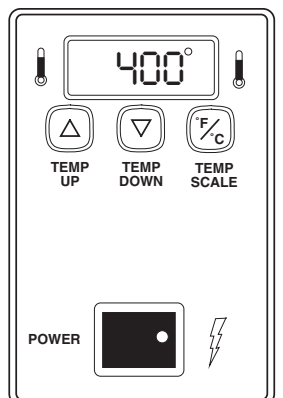
1. SP-P (Setpoint Platen) is displayed



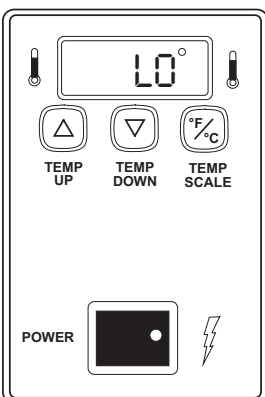
2. Current Platen setpoint temperature setting is displayed



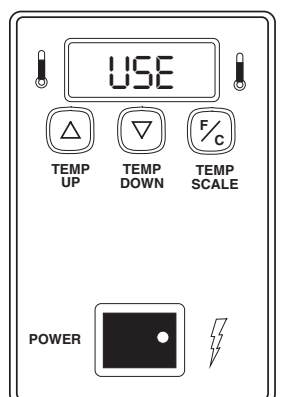
3. SP-A (Setpoint Auxiliary) is displayed



4. Current Auxiliary Air setpoint temperature is displayed



5. LO is displayed until Platen temperature rises above 550°F (288°C)



6. USE is displayed when Platen setpoint temperature* is reached

* Platen setpoint temperature must be between 460°F (238°C) and 600°F (316°).

Figure 4. Temperature Power Up Sequence

OPERATION (continued)

Safety Features

HI-LIMIT RESET BUTTON

A Hi-Limit Control turns off electrical power to the heater and control circuits if the unit overheats. To reset the control, allow 10-15 minutes for the unit to cool, then locate the Reset Button at the rear of the unit. Remove the black protective cap, press the Reset Button, and reinstall the protective cap (Figure 2).

NOTE: If the Hi-Limit requires continuous resetting, contact your Authorized Service Agency.

Fault Messages

The Control Display will flash fault messages when there is a problem with the unit.

“HI” will flash if the platen temperature exceeds 620°F (327°C) or if the platen thermocouple is disconnected or open.

“HI” and “USE” will flash (Figure 5) if the auxiliary heater’s temperature exceeds 440°F (227°C) or if the auxiliary thermocouple is disconnected or open.

“CHEC” will flash (Figure 6) when the control compartment ambient temperature is excessive: 140°F (60°C) to 180°F (82°C). All heaters will shut off.

“PO” will flash (Figure 7) if the incoming power drops below 190 Volts. The toaster will shut down.

Error Codes

If any of the following Error Codes appear, turn the unit off, allow it to cool, and turn it back on. If the error repeats, contact your authorized service agency for assistance.

ERR 001: No zero cross – refers to an on-board circuit not working. Contact Service: Replace Control Board.

ERR 002: A/D converter fail – refers to an on-board circuit not working. Contact Service: Replace Control Board.

ERR 003: Redundantly stored calibration has failed. Contact Service: Replace Control Board.

ERR 004: _SHORTED_PLATEN_TC,

ERR 005: _OPEN_PLATEN_TC,

ERR 006: (NOT USED)

ERR 007: HIGH_INTERNAL_TEMPERATURE,

ERR 008: EEPROM fail - refers to an on-board circuit not working. Contact Service: Replace Control Board.

ERR 009: _NO_INTERLOCK_INPUT

ERR 010: ERR_INVALID_DIP_SWITCH

ERR 011: ERR_NO_TMP75- refers to an on-board circuit not working. Contact Service: Replace Control Board.

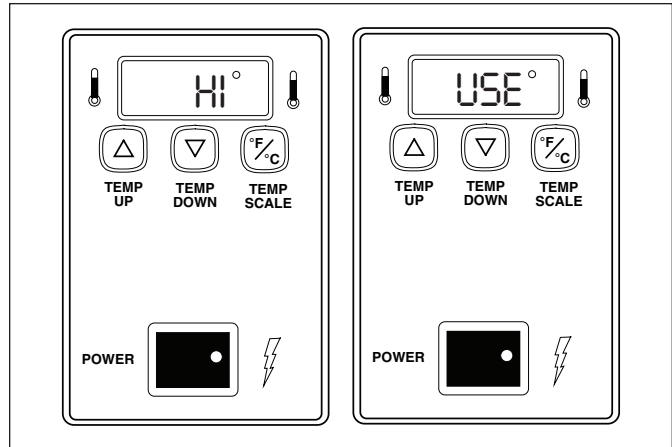


Figure 5. “HI” and “USE” Fault Message

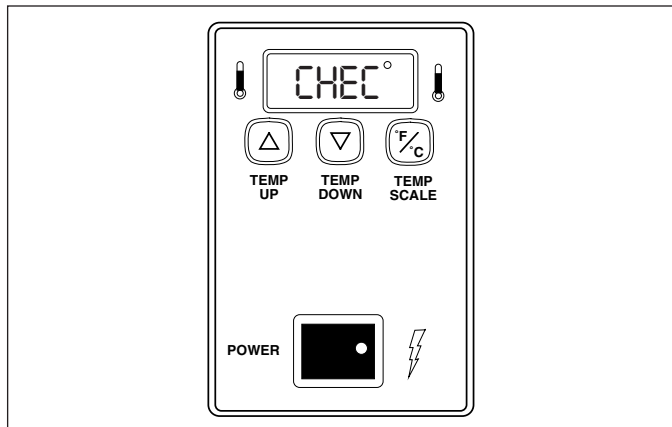


Figure 6. “CHEC” Fault Message

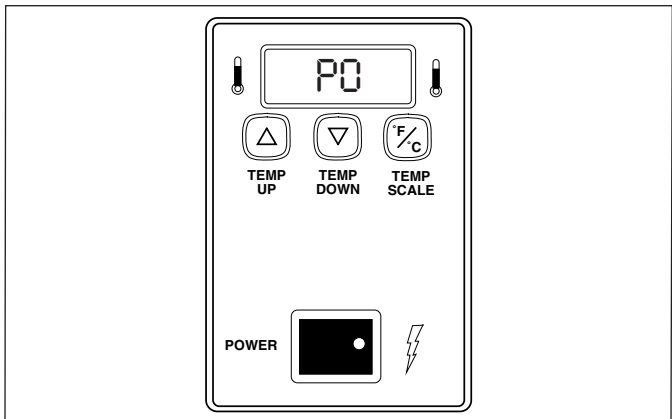


Figure 7. “PO” Fault Message

MAINTENANCE

⚠ WARNING ⚠

Turn the power off, unplug the power cord, and allow the unit to cool down 30 minutes before performing any service or maintenance.

⚠ CAUTION ⚠

To prevent damage to the unit, do NOT use abrasive cleaners on the Release Sheet or Belt Wrap.

⚠ CAUTION ⚠

Do NOT submerge the Butter Wheel Heated Base in water. Do not wash this item with a water jet. Do not spray cleansers directly on this item.

Daily

Tools Required:

- Heat-Resistant Gloves
- Clean Towels
- Multipurpose Detergent Solution
- Sanitizer Solution

1. Turn the power off to the unit and the Butter Wheel Heated Base. Unplug the power cord and clean the Release Sheet and Belt Wraps while they are warm.
2. Put on heat-resistant gloves and remove the Butter Wheel, Butter Pan, and Heat Shield (Figure 1).

NOTE: Do NOT submerge the Butter Wheel Heated Base in water during cleaning. This item should be wiped clean. Do not spray cleansers directly on this item.

3. Wash the Butter Wheel, Butter Pan, and Heat Shield in a sink and wipe them with a damp sanitized towel and allow them to air dry.
4. Remove the Release Sheet and place it on a clean, flat dry surface.
5. Wipe one side of the Release Sheet with a **clean** towel dampened with Multipurpose Detergent Solution immediately followed by a second clean towel dampened with sanitizer and allow it to air dry before continuing.
6. Repeat Step 5 on the other side of the Release Sheet.
7. Open the front Conveyor Cover and firmly wipe the Belt Wrap from left to right and top to bottom

with a clean towel dampened with Multipurpose Detergent Solution immediately followed by a second clean towel dampened with sanitizer.

8. Close the front Conveyor Cover, open the rear Conveyor Cover, and clean the Belt Wrap as described in Step 7.
9. Close the rear Conveyor Cover. Reinstall the Heat Shield, plug in the power cord, turn the unit on, count 18 seconds, then turn the unit off and unplug the unit.
10. Open the rear Conveyor Cover again and clean the newly exposed section of the Belt Wrap in the same manner as before. Close the Conveyor Cover.
11. Open the front Conveyor Cover again and clean the newly exposed section of the Belt Wrap in the same manner as before.
12. Close the front Conveyor Cover and wipe down the outside of the toaster with a clean, damp, sanitized towel.
13. Install the Release Sheet by draping it over both sides of the Platen with the crease centered on the Platen.

NOTE: To prolong the life of the Release Sheet, rotate it from one side to the other on a daily basis.

14. Install the Bun Chute so the hooks are installed over the lower rear yellow Support Rod.
15. Install the Heat Shield with the Release Sheet retainer clips securely over the Release Sheet and Platen.
16. Reinstall the Butter Wheel and Butter Pan, and plug in the unit.

NOTE: Make sure the Heat Shield is activating the Conveyor Safety Interlock Switch. The conveyors will not rotate unless the Heat Shield is in place and the Conveyor Safety Interlock Switch is activated.

NOTE: Check the Release Sheet to make sure it is not caught in the Conveyor. Additional Release Sheets can be purchased through your Authorized Service Agency under P/N 7000625 (3-Pack).

⚠ CAUTION ⚠

Failure to use Release Sheets may result in damage to the unit and loss of warranty coverage.

MAINTENANCE (continued)

Replacing the Release Sheet (Every 3-5 Weeks)

NOTE: Depending on toaster usage and on how well it is cleaned daily, the Release Sheet should last between 21–35 days.

1. Remove and discard the Release Sheet.
2. Lay a new Release Sheet on a clean, dry surface and fold it in half lengthwise and gently crease it at the fold using only your fingers (Figure 8).
3. Install the Release Sheet just as you would after Daily Cleaning.

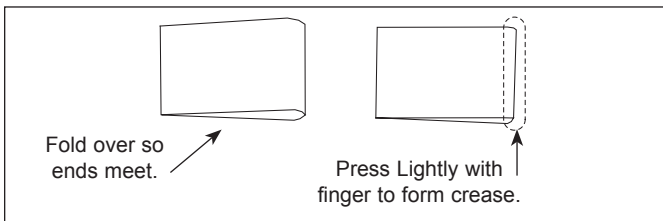


Figure 8. Folding the Release Sheet

Replacing the Belt Wraps (Every 2–4 Mo.)

NOTE: The Belt Wraps should last between 2–4 months. Additional Belt Wraps may be purchased from your Authorized Service Agency.

1. Turn the power off, unplug the power cord, and allow the unit to cool before proceeding.
2. Unplug and remove the Butter Wheel Assembly, and Heat Shield (Figure 1). Remove the cover from the Bun Thickness Compression Knobs and set them to 6 & 6.
3. Open both Conveyor Covers and pull the Belt Wrap Pin out of the zipper on the conveyor Belt Wrap (Figure 9).
4. Remove and discard the old Belt Wrap(s).
5. Clean both Conveyor Belt Chains just as you would clean the Belt Wraps during Daily Cleaning.
6. Install the new Belt Wraps around the Conveyor Belt Chains inside the Upper and Lower Support Rods with the zipper flap exposed and hanging down (Figures 10 & 11).
7. Close the Conveyor Cover(s), set the Bun Thickness Compression Knobs back to their normal settings and reinstall the Heat Shield, Butter Wheel, and Pan.

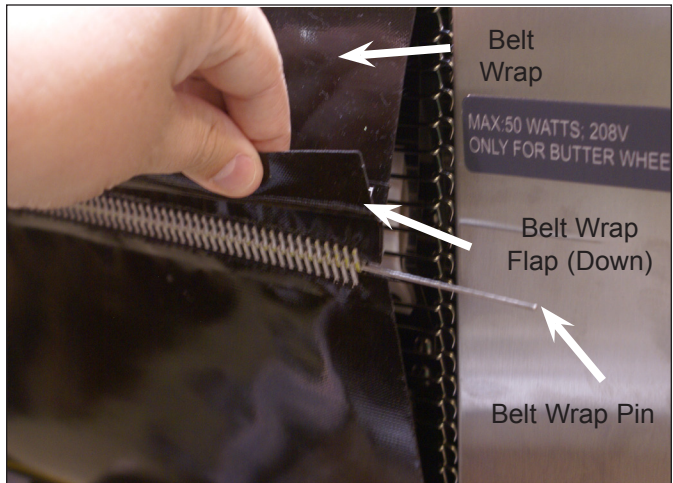


Figure 9. Removing Belt Wrap

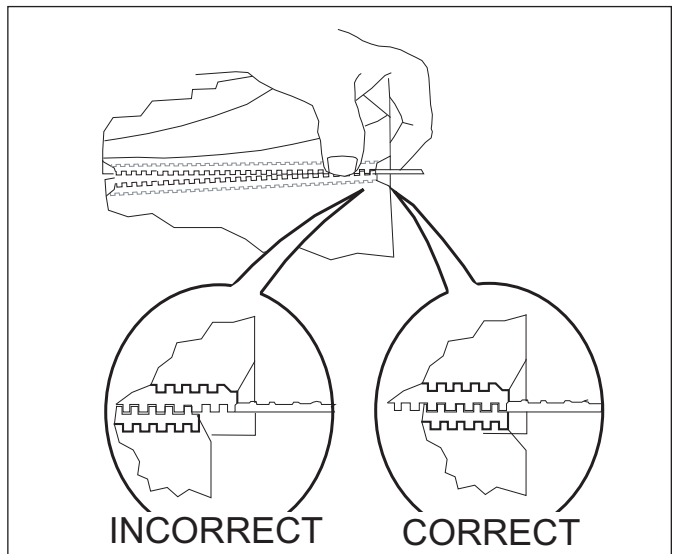


Figure 10. Aligning Belt Teeth

⚠ CAUTION ⚠

Align the ends of the Belt Wrap properly (Figure 11) or the Belt Wrap may be damaged.

⚠ CAUTION ⚠

Position the Belt Wrap inside the Upper and Lower Support Rods or damage to the unit may occur.

MAINTENANCE (continued)

Checking the Conveyor Belt Chains (Every 3–6 Months)

NOTE: The Bun Thickness Compression Knobs (Figure 3) must be set to “6 & 6” prior to measuring or removing or reinstalling the Conveyor Belt Chains.

MEASURING CONVEYOR BELT CHAINS

1. Remove the Bun Wheel Assembly, Bun Chute, Pan, and Heat Shield (Figure 1). Remove the Bun Compression Cover Plate and set the Bun Thickness Compression Knobs to 6 & 6.
2. Open both Conveyor Covers and pull the Belt Wrap Hinge Pin out of the zipper (Figure 9).
3. Pull the Conveyor Chain away from the edge of the toaster (Figure 12).
4. Hold a U.S. Dime horizontally between the frame and the chain (Figure 12).
5. If the gap is significantly wider than the coin, REMOVE links as described.
6. Repeat on the opposite side of the toaster.

REMOVING CONVEYOR BELT CHAIN LINKS

1. Turn the power off, unplug the power cord, and allow the unit to cool before proceeding.

2. Remove the Butter Wheel assembly, Bun Chute, and Heat Shield. Remove the cover from the Compression Controls and set the Compression Control Knobs to 6 & 6.
3. Remove the Conveyor Cover and pull the Belt Wrap Pin out of the zipper.
4. Remove the Belt Wrap.
5. Locate the two Master Links as shown in Figure ZX.
6. Remove the Master Link on both the left and right side of the chain.
7. Remove one complete link from the chain.



Figure 11. Measuring Conveyor Belt Chain

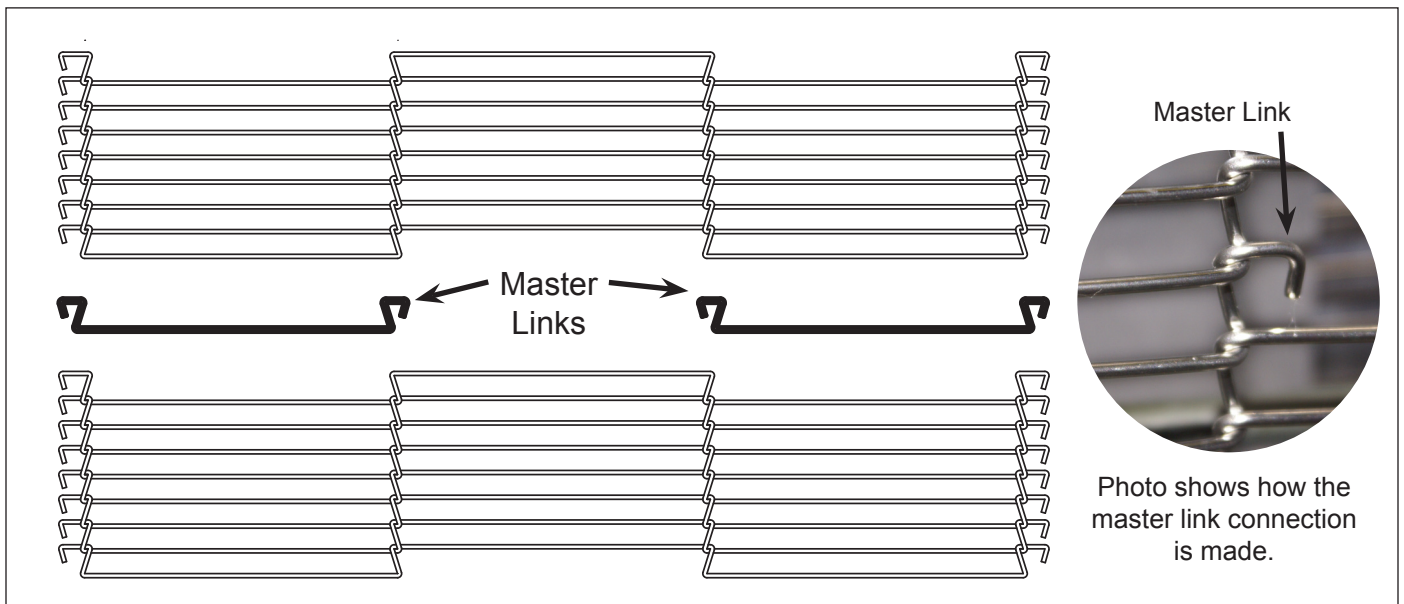


Figure 12. Removing Conveyor Belt Chain

MAINTENANCE (continued)

- Replace the Master Links on both the left and right side of the chain. This connects the two ends of the chain together.

NOTE: The ends of the hooks must point down (Figure 13).

- Replace the Belt Wrap. Secure with Hinge Pin.

NOTE: Make sure the Conveyor Belt Chain and Belt Wrap is installed under the upper Support Rod and under the lower Support Rod.

- Replace the Conveyor Cover(s), Butter Wheel assembly, Bun Chute, and Heat Shield.
- Set the Bun Compression Adjustment Knobs to 4 & 6. Replace the Bun Compression Cover Plate.
- Return the unit into service.

REPLACING THE CONVEYOR BELT CHAINS

- Turn the unit off, unplug the power cord, and allow the unit to cool.
- Remove the Butter Wheel Assembly, Bun Chute, and Heat Shield (Figure 1). Remove the Bun Compression Cover Plate and set the Bun Thickness Compression Knobs to 6 & 6.
- Remove the Conveyor Cover(s) and pull the Belt Wrap Hinge Pin out of the zipper (Figure 9).
- Pull the Conveyor Chain away from the edge of the toaster (Figure 12). Remove the Belt Wrap(s).
- Locate the two Master Links on the Conveyor Belt Chain and remove both the left and the right Master Link.
- Remove the existing Conveyor Belt Chain(s).
- Place the new Conveyor Belt Chain(s) on the top sprockets with the hook ends down

NOTE: The ends of the hooks must point down (Figure 13).

- Wrap the Conveyor Belt Chain around the top and lower sprockets and connect by replacing both the left and the right Master Links (Figure zx).
- Replace the Conveyor Cover(s), Butter Wheel Assembly, Bun Chute, and Heat Shield.
- Set the Bun Compression Adjustment Knobs to 4 and 6. Replace the Bun Compression Cover Plate.
- Return the unit to service.

Checking the Roller Tensioners (every 3–6 months)

MEASURING THE ROLLER TENSIONERS

- Measure the Roller Tensioner on both inner Conveyor Covers (Figure 14).
- The space between the inner Conveyor Cover and bottom of the Tensioner wheel should be no larger than 1/2 inch.
- Adjust or replace tensioners as needed.

REPLACING/ADJUSTING THE ROLLER TENSIONERS

- Remove the acorn nuts and old Roller Tensioner Assembly.
- Install the new Tensioner Assembly according to Figure zx.
- Make sure the spacers are placed inside the Tensioner arm. The spacers allow the Tensioner to pivot freely.
- Make sure there is 1/2" between the bottom of the Tensioner wheel and the inside of the Conveyor Cover.

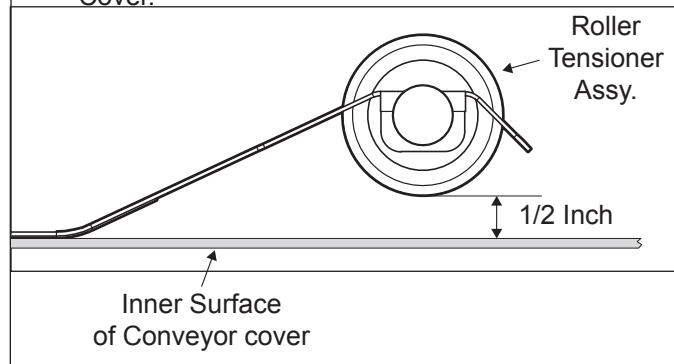


Figure 13. Measuring Roller Tensioner

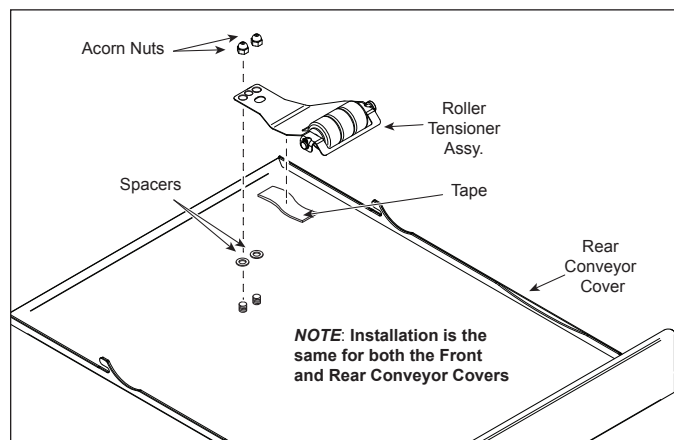
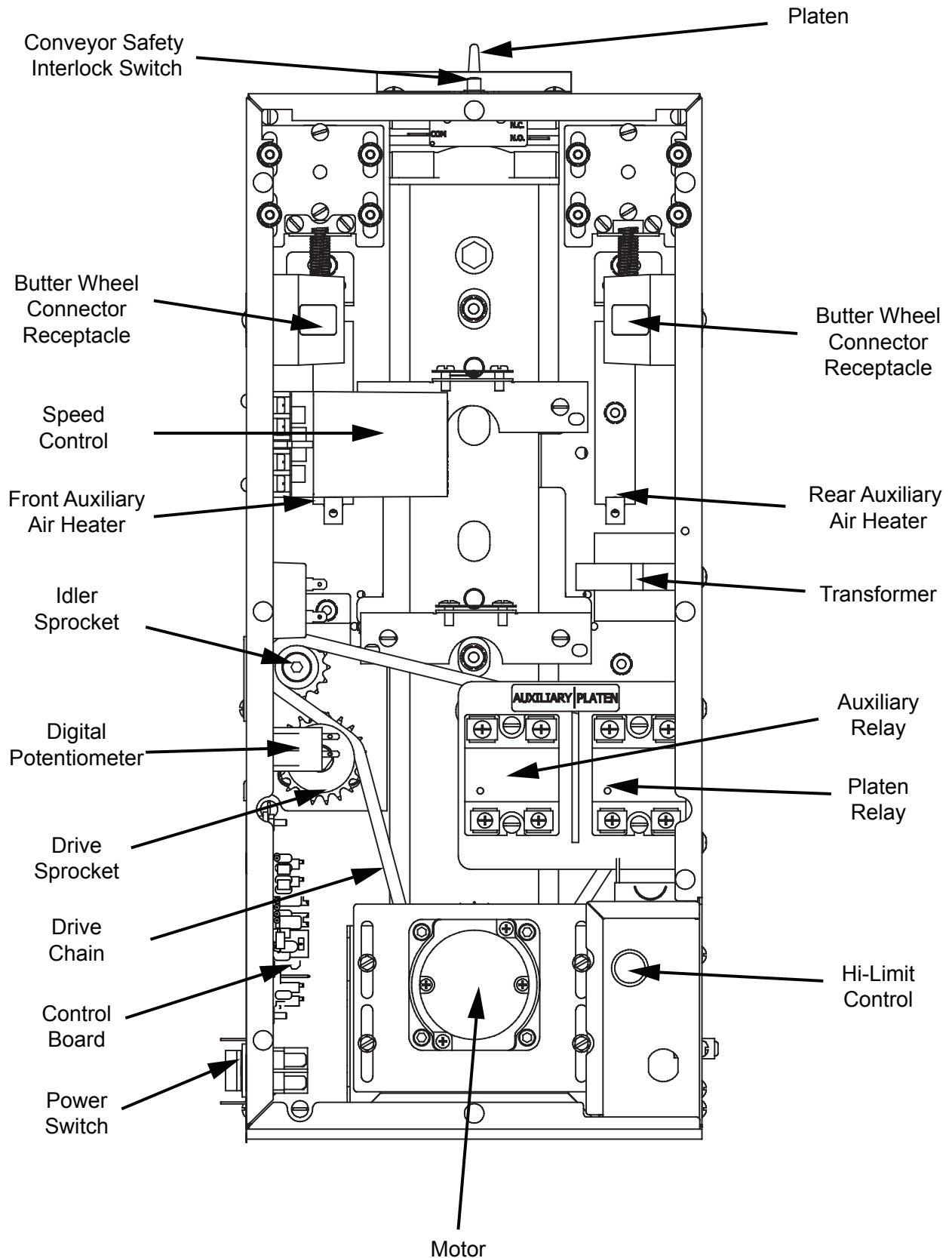


Figure 14. Measuring Roller Tensioner

TROUBLESHOOTING



TROUBLESHOOTING (continued)

⚠ WARNING ⚠

To avoid possible personal injury and/or damage to the unit, inspection, test and repair of electrical equipment should be performed by qualified service personnel. The unit should be unplugged when servicing, except when electrical tests are required. Use extreme care during electrical circuit tests. Live circuits will be exposed.

Problem	Possible Cause	Corrective Action
Control Display flashes “LO” continuously. Buns not toasting properly.	Platen temperature is below 440°F (226°C).	Allow the unit to warm up for 30 minutes and then recheck. If the Control Display still reads “LO”, contact your maintenance person or Authorized Service Agency for service.
Control display flashes “LO” continuously. Buns burn.	Failed Platen Thermocouple.	Contact your maintenance person or Authorized Service Agency for service.
	Failed Control Board.	
Control Display flashes “PO” continuously.	The power to the unit is below 190 volts.	Turn the power off and then on. If the display still shows “PO”, check the power cord, plug, and outlet for damage.
	Failed Control Board.	Reset the Circuit Breakers.
	Failed Transformer.	Contact your maintenance person, Authorized Service Agency, or electrician for service.
Control flashes “CHEC” continuously.	Control Compartment temperature is above 140°F (60°C).	Verify side vents on toaster are unblocked and not near other heating appliances. If problem still persists, contact your maintenance person or Authorized Service Agency for service.
	Failed Cooling Fan.	
	Failed Control Board.	
Control Display flashes “HI” continuously. Buns burn.	Failed Platen Solid State Relay.	Contact your maintenance person or Authorized Service Agency for service.
	Failed Control Board.	
	Failed Platen Thermocouple.	
Control Display flashes “HI” continuously. Buns not toasting properly.	Loose Platen Thermocouple connection on Control Board or the Platen Thermocouple is open.	Re-secure the Platen Thermocouple connection to the Control Board. If the Control Display still reads “HI”, check the Thermocouple for continuity.
	Failed Control Board.	Contact your maintenance person or Authorized Service Agency for service.
Control Display flashes “HI” and “LO” at cold start up, then “HI” and “USE” after 20–30 minutes.	Loose Auxiliary Thermocouple connection on Control Board or Thermocouple is open.	Re-secure the Auxiliary Thermocouple connection to the Control Board. If the Control Display still reads “HI” and “LO” or “HI” and “USE”, check Thermocouple for continuity. Contact your maintenance person or Authorized Service Agency for service.
No Control Display.	Unit not plugged in.	Plug unit into the proper electrical outlet.
	Hi-Limit control has tripped.	Allow unit to cool and reset the Hi-Limit control. If it trips again, contact your maintenance person or Authorized Service Agency.
	Circuit Breakers turned off or tripped. Damaged electrical outlet, plug, or cord. Power Switch damaged.	Reset Circuit Breakers. If they trip again, check the cord, plug, and outlet for damage. Contact your maintenance person, Authorized Service Agency, or electrician.

TROUBLESHOOTING (continued)

Problem	Possible Cause	Corrective Action
Conveyor does not turn.	Safety Interlock Switch is not activated.	Reposition the Heat Shield properly.
	Heat Shield is bent or damaged.	Replace Heat Shield (P/N 0011528).
	Damaged or Missing Roller Tensioner(s).	Adjust or replace Roller Tensioner(s).
	Conveyor Belt/Chain has stretched. Chain skipping on sprockets.	Measure and adjust the Conveyor Belt Chains as described in the Maintenance section of this manual.
	Motor Drive Chain came off Sprocket(s).	Reinstall Drive Chain.
	Drive Chain needs lubrication.	Lubricate chain with P/N 2190152.
	Drive Motor has overheated.	Allow unit to cool and check Conveyor(s) for obstructions or binding at sprockets. Measure and adjust Conveyor Belt(s) as described in the Maintenance section of this manual.
	Drive Motor has failed.	Contact your maintenance person or Authorized Service Agency for service.
Buns not toasting adequately.	Compression Settings are incorrect.	Use the recommended settings. Set Heel to 2 and Crown to 6.
	Temperature Setting is incorrect.	Verify that the Platen (SP-P) is set to 540°F (282°C) and the Auxiliary (SP-A) is set to 400°F (204°C). For making changes to the setpoint temperature, see the Installation section of this manual.
	Release Sheet is worn or needs cleaning (replace every 4–6 weeks).	Inspect Release Sheet for cleanliness, worn spots, tears, or wrinkles. Clean or replace Release Sheet as described in the Maintenance section of this manual.
	Belt Wraps are worn or need cleaning (replace every 3–6 months).	Replace or clean Belt Wraps as described in the Maintenance section of this manual.
	Belt Wraps are not tacky/sticky.	Clean or replace Belt Wraps as described in the Maintenance section of this manual.
	Buns do not meet specifications.	Contact your bun supplier.

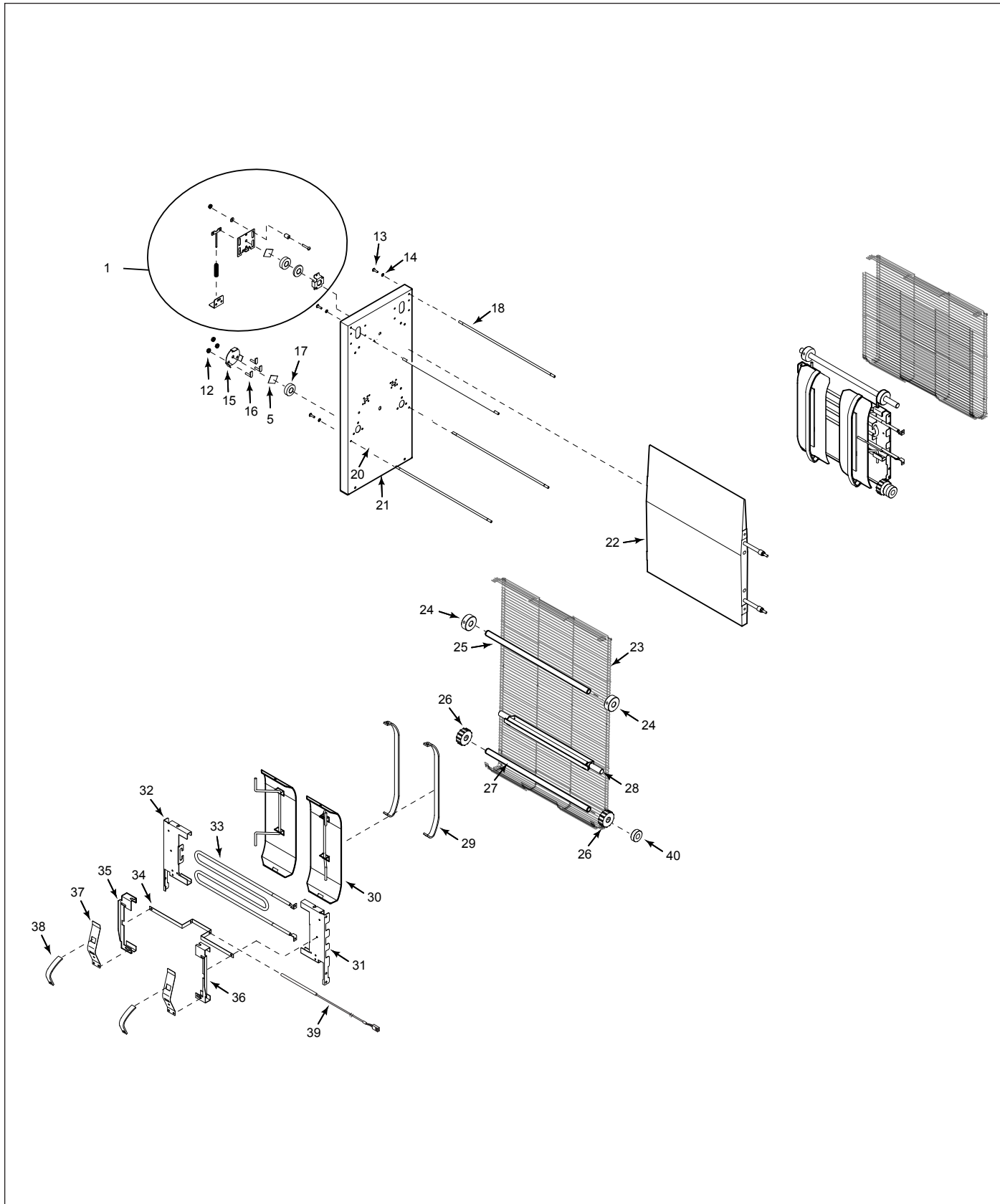
TROUBLESHOOTING (continued)

Problem	Possible Cause	Corrective Action	
Crowns and/or Heels must be forced into the toaster. Buns sticking and burning.	Belt Wraps not being cleaned properly.	Clean Belt Wraps as described in the Maintenance section of this manual.	
	Conveyor Belt Wraps are not tacky/ sticky (replace every 3–6 months).	Clean Belt Wraps. If the Belt Wraps are too worn, replace them as described in the Maintenance section of this manual.	
	Belt Wraps are dirty, worn, or damaged (replace every 3–6 months).	Clean or replace Belt Wraps as described in the Maintenance section of this manual.	
	Release Sheet is not being cleaned properly.	Clean both sides of the black and silver Release Sheet as described in the Maintenance section of this manual.	
	Release Sheet is not being reversed as required.	Reverse the Release Sheet or replace Release Sheet as described in the Maintenance section of this manual.	
	Release Sheet is dirty, worn, or damaged (replace every 4–6 weeks).	Clean or replace Release Sheet as described in the Maintenance section of this manual.	
	Conveyor Belt Chains are skipping on Sprockets.	Measure and adjust the Conveyor Belt Chains as described in the Maintenance section of this manual.	
	Conveyor Safety Interlock Switch is not being activated by the Heat Shield.	Heat Shield is ajar. Reposition Heat Shield.	
		Heat Shield is damaged. Replace if necessary. If the Conveyor Safety Interlock Switch is damaged, contact your maintenance person or Authorized Service Agency for service.	
	Belt Wraps slipping over Conveyor Belt Chains.	Remove Belt Wraps and clean the Conveyor Belt Chain links and Belt Wraps as described in the Maintenance section of this manual.	
	Roller Tensioner(s) damaged or missing.	Reinstall or replace Roller Tensioner(s) as described in the Maintenance section of this manual.	
	Drive Motor stalls intermittently.	Contact your maintenance person or an Authorized Service Agency for service.	
	Compression Settings are incorrect.	Use the recommended settings. Set Heel to 4 and Crown to 6.	
Buns are not inserted into the toaster properly.	Buns must be inserted with the cut sides facing each other on the correct Heel or Crown side.		
New Conveyor Belt Wraps do not fit.	Compression Settings are incorrect.	Set Compression Knobs to 6 and 6 when replacing Belt Wraps or when adjusting Conveyor Belt Chains.	
	Belt Wraps not installed correctly.	Install Belt Wraps inside the Support Rods with the zipper flap exposed and hanging down.	
	Using incorrect or damaged Belt Wraps.	Replace with OEM P/N 7000749 only.	

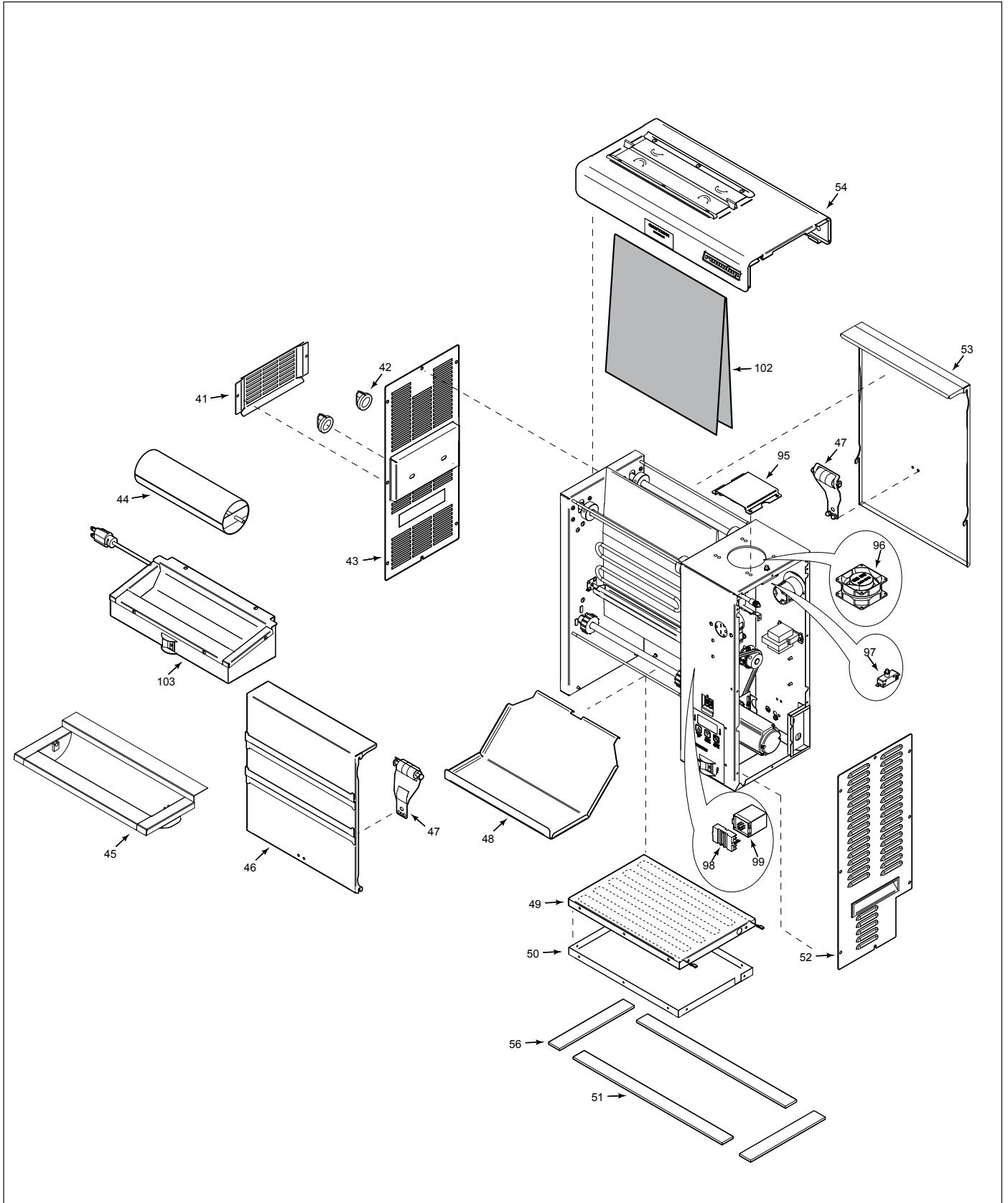
TROUBLESHOOTING (continued)

Problem	Possible Cause	Corrective Action
Toaster makes unusual sounds.	Compression Settings are too tight.	Set Compression Settings to the correct (or larger) setting.
	Conveyor Belt Wrap is installed incorrectly.	Belt Wraps must be installed as described in the Maintenance section of this manual.
	Belt Wrap Pin rubbing on housing.	Center the Pin in the Belt Wrap zipper.
	Roller Tensioner(s) bent or missing.	Measure, adjust, or replace the Roller Tensioner(s) as described in the Maintenance section of this manual.
	Conveyor Belt Chains have stretched.	Measure and adjust the conveyor Belt Chains as described in the Maintenance section of this manual.
	Conveyor Belt Chains adjusted incorrectly.	
	Sugar and/or carbon has accumulated inside the Conveyor Belt Wrap and between the Conveyor Belt chain and Tensioner Slide Rails.	Remove Belt Wraps, clean conveyor Belt Chain links just as you clean the Belt Wraps daily, and then clean the Slide Rails on the Tensioners. Next, clean the Belt Wrap on both sides before reinstalling it.
	Motor Drive Chain needs lubrication.	Lubricate the Drive Chain carefully with P/N 2140152 at least once a year.
	A Conveyor Shaft bearing is binding.	Contact your maintenance person or Authorized Service Agency for service.

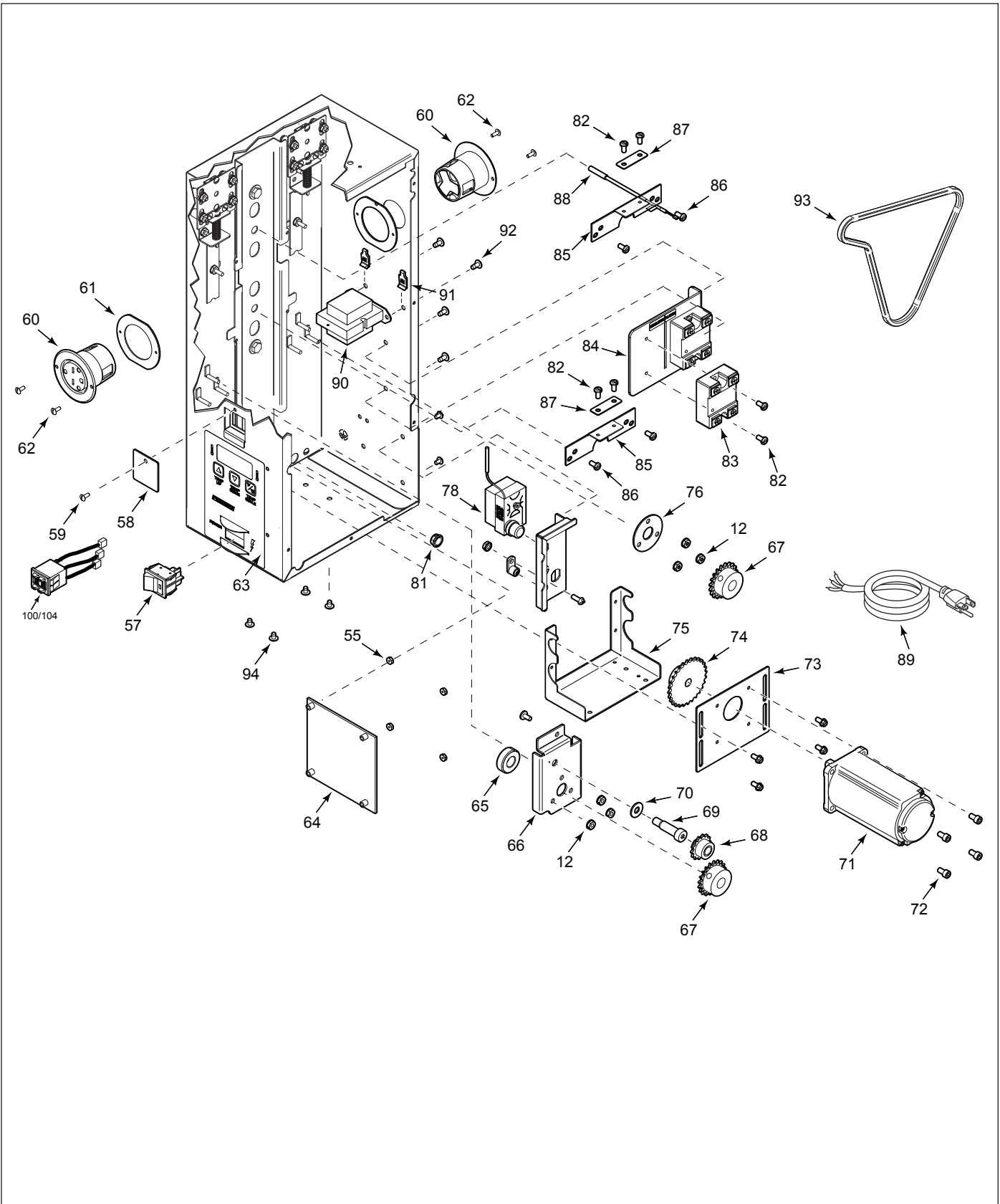
REPLACEMENT PARTS (continued)



REPLACEMENT PARTS (continued)



REPLACEMENT PARTS (continued)



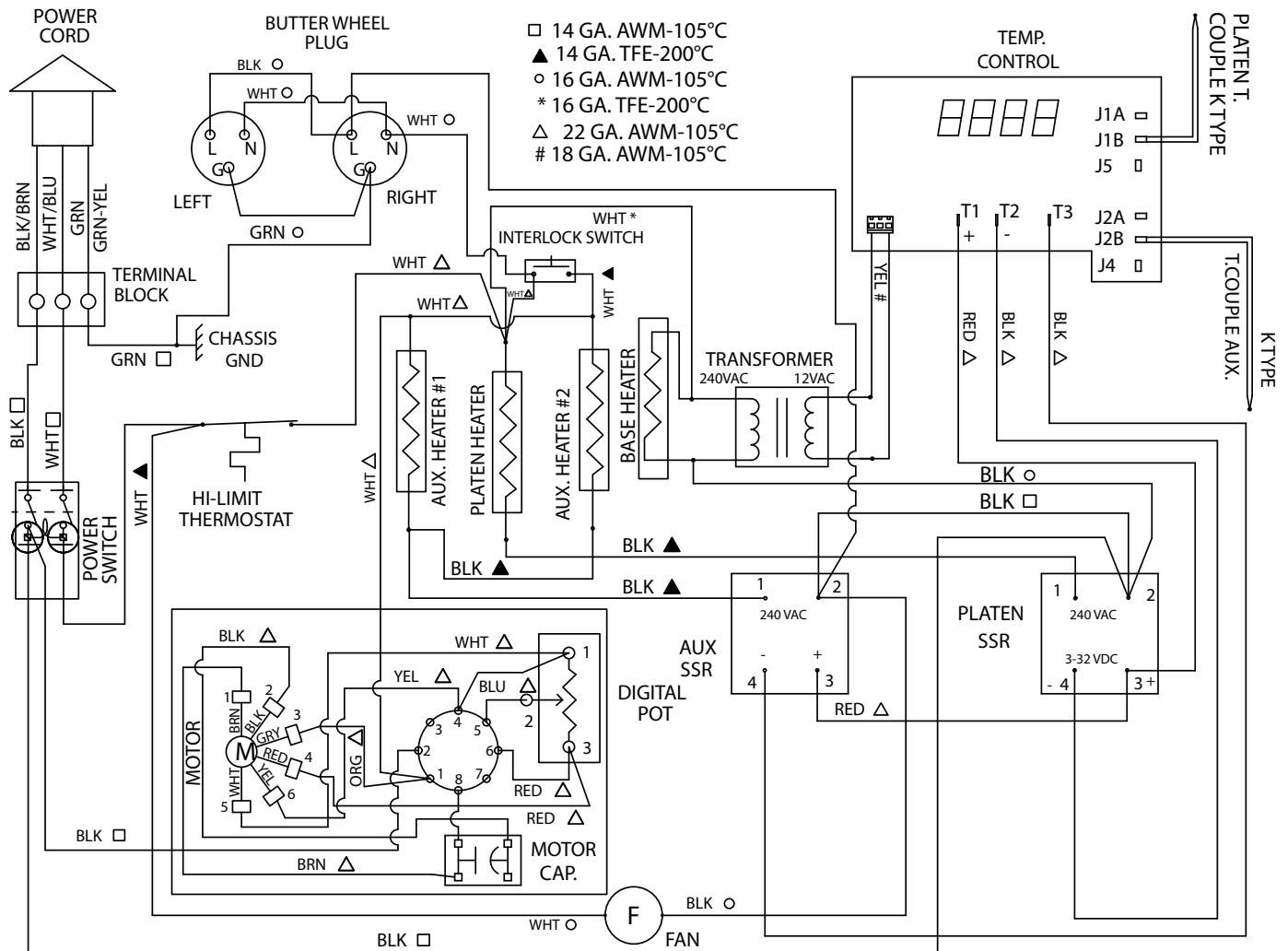
REPLACEMENT PARTS (continued)

Item	Part No.	Description	Qty.
1	0505987	Spring Guide	4
2	0600141	Compression Spring	4
3	0505967	Spring Support Bracket	4
4	0505988	Retainer Plate	2
5	2100256	Thrust Strip	4
6	2150285	Single Groove Bearing	2
7	0504320	Spacer, .781" x 1.125" x .06"	2
8	0505989	Bearing Retainer Bracket	2
9	3080222	Mach. Screw #8-32 x 7/8" (KIT?)	16
10	3080224	Spacer 3/8" OD x .515" Lg. (KIT?)	16
11	3080223	Washer, Flat #8 (KIT?)	16
12	308P143*	Nut, Hex KEPS #8-32 Steel	-
13	306P105*	Mach. Screw #6-32 x 1/2"	-
14	306P102*	Washer, Int. Tooth #06	-
15	7000167	Bearing Retainer Kit	2
16	7000759	Tensioner Kit (incl. items 1 - 14)	1
18	7000644	Conveyor Cover Rod Kit (Incl. #13)	4
19	7000749	Conveyor Belt Wrap Kit	1
22	7000757	Platen (208V/1900W) KIT	1
23	7000758	Belt, Wire Kit	2
24	2150296	Roller	4
25	2150293	Idler Shaft	2
26	2150297	Sprocket, 1/2" Bore 1.59" OD	4
27	2150291	Drive Shaft	2
28	0021652	Cam Weldment	2
29	2100261	Slide Rail, Rear	1
30	0021651	Shield Support Weldment	1
31	0503496	Bracket Tensioner Right	2
32	0503497	Bracket Tensioner Left	2
33	4030349	Heating Element (208V/675W)	2
34	0503533	Bracket, Auxiliary Thermocouple	1
35	0503507	Bracket Retainer Left	2
36	0503495	Bracket Retainer Right	2
37	0505968	Tensioner	4
38	2100259	Slide Rail	4
39	7000165	Thermocouple Type "K", 1/8" Dia.	1
40	7000199	Aluminum Spacer Kit	1
41	0505965	Compression Cover	1
42	2100323	Knob	-
43	0021649	End Housing Panel Weldment	1
44	0021659	Butter Roller Weldment Diamond Pattern	1
45	0021643	Butter Tray Weldment	1
46	0012489	Conveyor Cover Front Assy.	1
47	7000759	Roller Tensioner Kit (2 pack)	1
48	0505966	Bun Chute	1
49	0012481	Base Heater Assy.	1
50	0505950	Inner Base	1
51	0200292	Base Gasket 17" Lg.	2
52	0012484	Control Housing Cover Assy.	1
53	0012488	Conveyor Cover Rear Assy.	1
54	0012478	Heat Shield Assy.	1
55	304P105*	Nut, Hex "KEPS" #4-40	-

Item	Part No.	Description	Qty.
56	0200293	Base Gasket 8.5" Lg.	2
57	7000542	Rocker Switch Kit	1
58	0505952	Speed Control Cover	1
59	306P104*	Mach. Screw #6-32 x 1/4"	-
60	4051005	Receptacle (250V/15A)	2
61	0505980	Outer Retainer	2
62	306P103*	Mach. Screw #6-32 x 3/8"	-
63	1001342	Control Label	1
64	7000739	Control Board Kit	1
65	7000296	Bearing, Ball Kit	1
66	0505985	Retainer, Idler & Brg.	1
67	2150181	Sprocket 25B20 1/2" Bore	2
68	0011299	Sprocket/Bearing Assy.	1
69	331P103*	Shoulder Bolt 3/8" x 1" 5/16-18 Thrd.	-
70	212P118*	Flat Washer .316"ID x .687"OD x .047"	-
71	4000199	Gear Motor	1
72	3100199	Screw #10-32 x 3/8" Lg. Socket Head	4
73	0505964	Motor Mounting Plate	1
74	2150295	Sprocket 25B28 .395" Bore	1
75	0505956	Motor Mounting Bracket	1
76	0500464	Bearing Retainer	1
78	4030332	Hi-Limit Thermostat	1
81	0400111	Shorty Bushing 1/2"	1
82	308P115*	Mach. Screw #8-32 x 3/8"	-
83	7000653	Relay, Solid State 50A Kit	2
84	0503359	Relay Bracket	1
85	0503444	Thermocouple Bracket	2
86	308P144*	Mach. Screw #8-32 x 1/4" with #6 Head	-
87	0503446	Plate, Thermocouple Bracket	2
88	4050214	Thermocouple Type "K", 3/16" Dia.	1
89	0700779	Power Cord 18/3 (6-15P)	1
90	4010187	Transformer (240V)	1
91	300P102*	Nut, Speed #8-32 "U"	-
92	308P157*	Tap Screw #8-32 x 3/8"	-
93	2150294	Drive Chain	1
94	308P103*	Mach. Screw #8-32 x 1/4"	-
95	0503775	Fan Duct	2
96	4000138	Fan, Axial (220/230V)	1
97	7000400	Interlock Switch Kit	1
98	4051004	8-Pin Socket	1
99	4070143	Motor Speed Controller	1
100	4051003	Potentiometer, 10K Digital	1
101	4010221	Cap, MP, Motor Run	1
102	7000625	Release Sheet (Pack of 3)	-
103	0012475	Butter Wheel Case Assy.	1
104	7000760	Digital Potentiometer Kit	-

* Only available in packages of 10.

WIRING DIAGRAM



*Motor connections: 50hz requires male to male adapter (not included).

LIMITED WARRANTY

Equipment manufactured by Roundup Food Equipment Division of A.J. Antunes & Co. has been constructed of the finest materials available and manufactured to high quality standards. These units are warranted to be free from electrical and mechanical defects for a period of one (1) year from date of purchase under normal use and service, and when installed in accordance with manufacturer's recommendations. To insure continued operation of the units, follow the maintenance procedures outlined in the Owner's Manual. During the first 12 months, electro-mechanical parts, non-overtime labor, and travel expenses up to 2 hours (100 miles/160 km), round trip from the nearest Authorized Service Center are covered. During the first 24 months, coverage for parts only to include the following components: Generator Casting, Solid State Control, and Motor.

1. This warranty does not cover cost of installation, defects caused by improper storage or handling prior to placing of the Equipment. This warranty does not cover overtime charges or work done by unauthorized service agencies or personnel. This warranty does not cover normal maintenance, calibration, or regular adjustments as specified in operating and maintenance instructions of this manual, and/or labor involved in moving adjacent objects to gain access to the equipment. This warranty does not cover consumable/wear items. This warranty does not cover damage to the Load Cell or Load Cell Assembly due to abuse, misuse, dropping of unit/shock loads or exceeding maximum weight capacity (4 lbs). This warranty does not cover water contamination problems such as foreign material in water lines or inside solenoid valves. It does not cover water pressure problems or failures resulting from improper/incorrect voltage supply. This warranty does not cover Travel Time & Mileage in excess of 2 hours (100 miles/160 km) round trip from the nearest authorized service agency.
2. Roundup reserves the right to make changes in design or add any improvements on any product. The right is always reserved to modify equipment because of factors beyond our control and government regulations. Changes to update equipment do not constitute a warranty charge.
3. If shipment is damaged in transit, the purchaser should make a claim directly upon the carrier. Careful inspection should be made of the shipment as soon as it arrives and visible damage should be noted upon the carrier's receipt. Damage should be reported to the carrier. This damage is not covered under this warranty.
4. Warranty charges do not include freight or foreign, excise, municipal or other sales or use taxes. All such freight and taxes are the responsibility of the purchaser.
5. THIS WARRANTY IS EXCLUSIVE AND IS IN LIEU OF ALL OTHER WARRANTIES, EXPRESSED OR IMPLIED, INCLUDING ANY IMPLIED WARRANTY OR MERCHANTABILITY OR FITNESS FOR A PARTICULAR PURPOSE, EACH OF WHICH IS HEREBY EXPRESSLY DISCLAIMED. THE REMEDIES DESCRIBED ABOVE ARE EXCLUSIVE AND IN NO EVENT SHALL ROUNDUP BE LIABLE FOR SPECIAL CONSEQUENTIAL OR INCIDENTAL DAMAGES FOR THE BREACH OR DELAY IN PERFORMANCE OF THIS WARRANTY.



A.J. Antunes & Co.

We exist to make our customers successful.

A.J. Antunes & Co.
Headquarters/Manufacturing
Carol Stream, Illinois 60188 USA
Phone: (630) 784-1000
Toll Free: (800) 253-2991
Fax: (630) 784-1650

Antunes Equipment
Manufacturing (Suzhou) Ltd.,
Suzhou, Jiangsu, China 215011
Phone: 86-512-6841-3637
Toll Free: 400-0-7878-22
Fax: 86-512-6841-3907

www.ajantunes.com