

MANUFACTURING

NUMBERS:

9210718  
9210725  
9210726

***roundup***  
by A.J. Antunes & Co. ®

# ***VERTICAL CONTACT TOASTER***

With Mechanical Driven Butter Wheel Model  
VCT-1000

    
P/N 1010926 Rev. B 04/12  
Sonic



# ***Owner's Manual***

## TABLE OF CONTENTS

|   |          |  |                   |
|---|----------|--|-------------------|
| <b>Owner Information</b> .....              | <b>2</b> | <b>Operation</b> .....                             | <b>8</b>          |
| General .....                               | 2        | Operating Instructions .....                       | 8                 |
| Warranty Information .....                  | 2        | Safety Features .....                              | 8                 |
| Service/Technical Assistance .....          | 3        | <b>Maintenance</b> .....                           | <b>9</b>          |
| <b>Important Safety Information</b> .....   | <b>4</b> | Daily Cleaning .....                               | 9                 |
| <b>Specifications</b> .....                 | <b>5</b> | Replacing the Black and Silver Release Sheet ..... | 10                |
| Electrical Ratings.....                     | 5        | Checking the Conveyor Belt Chains .....            | 10                |
| Electrical Cord & Plug Configurations ..... | 5        | Replacing the Spring Tensioners.....               | 11                |
| Dimensions.....                             | 5        | <b>Troubleshooting</b> .....                       | <b>12</b>         |
| Model Designation.....                      | 5        | <b>Wiring Diagram</b> .....                        | <b>14</b>         |
| <b>Installation</b> .....                   | <b>6</b> | <b>Replacement Parts</b> .....                     | <b>15</b>         |
| Unpacking.....                              | 6        | <b>Limited Warranty</b> .....                      | <b>Back Cover</b> |
| Equipment Setup .....                       | 6        |  |                   |
| Assembling the Unit .....                   | 6        |  |                   |

## OWNER INFORMATION

### General

The Vertical Contact Toaster Model VCT-1000 is designed for contact toasting of buns. The toaster design allows the operator to place buns on both sides of the heated Platen at the same time.

Buns are placed into the top slanted Bun Feeder. Uniformly toasted, golden brown buns are retrieved from the Bun Chute at the bottom of the toaster in approximately 15 seconds.

This manual provides the safety, installation, and operating procedures for the Vertical Contact Toaster. We recommend that all information contained in this manual be read prior to installing and operating the unit.

Your Vertical Contact Toaster is manufactured from the finest materials available and assembled to Roundup's strict quality standards. This unit has been tested at the factory to ensure dependable trouble-free operation.

### Warranty Information

Please read the full text of the Limited Warranty in this manual.

If the unit arrives damaged, contact the carrier immediately and file a damage claim with them. Save all packing materials when filing a claim. Freight damage claims are the responsibility of the purchaser and are NOT covered under warranty.

The warranty does NOT extend to:

- Damages caused in shipment or damage as result of improper use.
- Installation of electrical service.
- Normal maintenance as outlined in this manual.
- Malfunction resulting from improper maintenance.
- Damage caused by abuse or careless handling.
- Damage from moisture into electrical components.
- Damage from tampering with, removal of, or changing any preset control or safety device.

**IMPORTANT!** Keep these instructions for future reference. If the unit changes ownership, be sure this manual accompanies the equipment.

### **OWNER INFORMATION (continued)**

#### **Service/Technical Assistance**

If you experience any problems with the installation or operation of your unit, contact your local Roundup Authorized Service Agency.

Fill in the information below and have it handy when calling your Authorized Service Agency for assistance. The serial number is on the specification plate located on the rear of the unit.

Purchased From: \_\_\_\_\_

Date of Purchase: \_\_\_\_\_

Model No.: \_\_\_\_\_

Serial No.: \_\_\_\_\_

Mfg. No.: \_\_\_\_\_

Refer to the service agency directory included with your unit.

Authorized Service Agency

Name: \_\_\_\_\_

Phone No.: \_\_\_\_\_

Address: \_\_\_\_\_

Use only genuine Roundup replacement parts in this unit. Use of replacement parts other than those supplied by the manufacturer will void the warranty. Your Authorized Service Agency has been factory trained and has a complete supply of parts for this toaster.

You may also contact the factory at 1-877-392-7854 if you have trouble locating your nearest Authorized Service Agency.

## IMPORTANT SAFETY INFORMATION

In addition to the warnings and cautions in this manual, use the following guidelines for safe operation of the unit.

- Read all instructions before using equipment.
- For your safety, the equipment is furnished with a properly grounded cord connector. Do NOT attempt to defeat the grounded connector.
- Install or locate the equipment only for its intended use as described in this manual. Do NOT use corrosive chemicals in this equipment.
- Do NOT operate this equipment if it has a damaged cord or plug, if it is not working properly, or if it has been damaged or dropped.
- This equipment should be serviced by qualified personnel only. Contact the nearest Roundup Authorized Service Agency for adjustment or repair.
- Do NOT block or cover any openings on the unit.
- Do NOT immerse cord or plug in water.
- Keep cord away from heated surfaces.
- Do NOT allow cord to hang over edge of table or counter.

The following warnings and cautions appear throughout this manual and should be carefully observed.

- Turn the power off, unplug the power cord, and allow unit to cool down before performing any service or maintenance.
- The procedures in this chapter may include the use of chemical products. These chemical products will be highlighted with bold face letters followed by the abbreviated HCS (Hazard Communication Standard). See Hazard Communication Standard manual for the appropriate Material Safety Data Sheets (MSDS).

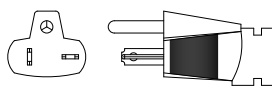
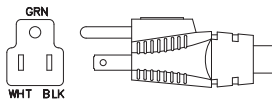
- The toaster should be grounded according to local electrical codes to prevent the possibility of electrical shock. It requires a grounded receptacle with separate electrical lines, protected by fuses or circuit breaker of the proper rating.
- Bread may burn. Therefore toasters must NOT be used near or below curtains or other combustible walls and materials. Failure to maintain safe operating distances may cause discoloration or combustion.
- Failure to use Release Sheets may result in damage to the equipment and loss of warranty coverage.
- All electrical connections must be in accordance with local electrical codes and any other applicable codes.
- **WARNING ELECTRICAL SHOCK HAZARD. FAILURE TO FOLLOW THESE INSTRUCTIONS COULD RESULT IN SERIOUS INJURY OR DEATH.**
  - Electrical ground is required on this appliance.
  - Do NOT modify the power supply cord plug. If it does not fit the outlet, have a proper outlet installed by a qualified electrician.
  - Do NOT use an extension cord with this appliance.
  - Check with a qualified electrician if you are unsure if the appliance is properly grounded.
  - If the power cord is damaged, it must be replaced by a power cord from the manufacturer or an Authorized Service Agency.

### SPECIFICATIONS

#### Electrical Ratings

| Model & Mfg. No.                 | Volts       | Watts         | Amp.          | Hertz |
|----------------------------------|-------------|---------------|---------------|-------|
| VCT-1000CV<br>9210718<br>9210726 | 208–<br>240 | 2600–<br>3455 | 12.5–<br>14.4 | 60    |
| VCT-1000CF<br>9210725            | 120         | 1800          | 15            | 60    |

#### Electrical Cord & Plug Configurations

| Model & Mfg. No.                 | Description   | Configuration   |
|----------------------------------|---|---|
| VCT-1000CV<br>9210718<br>9210726 | NEMA 6-20P 20<br>Amp, 250 VAC<br>Non-Locking<br>(Assembly Only) |  |
| VCT-1000CF<br>9210725            | NEMA 5-15P 15<br>Amp, 120 VAC<br>Non-Locking<br>(Assembly Only) |  |

#### Model Designation

##### VCT-1000XX

TYPE OF POWER CORD

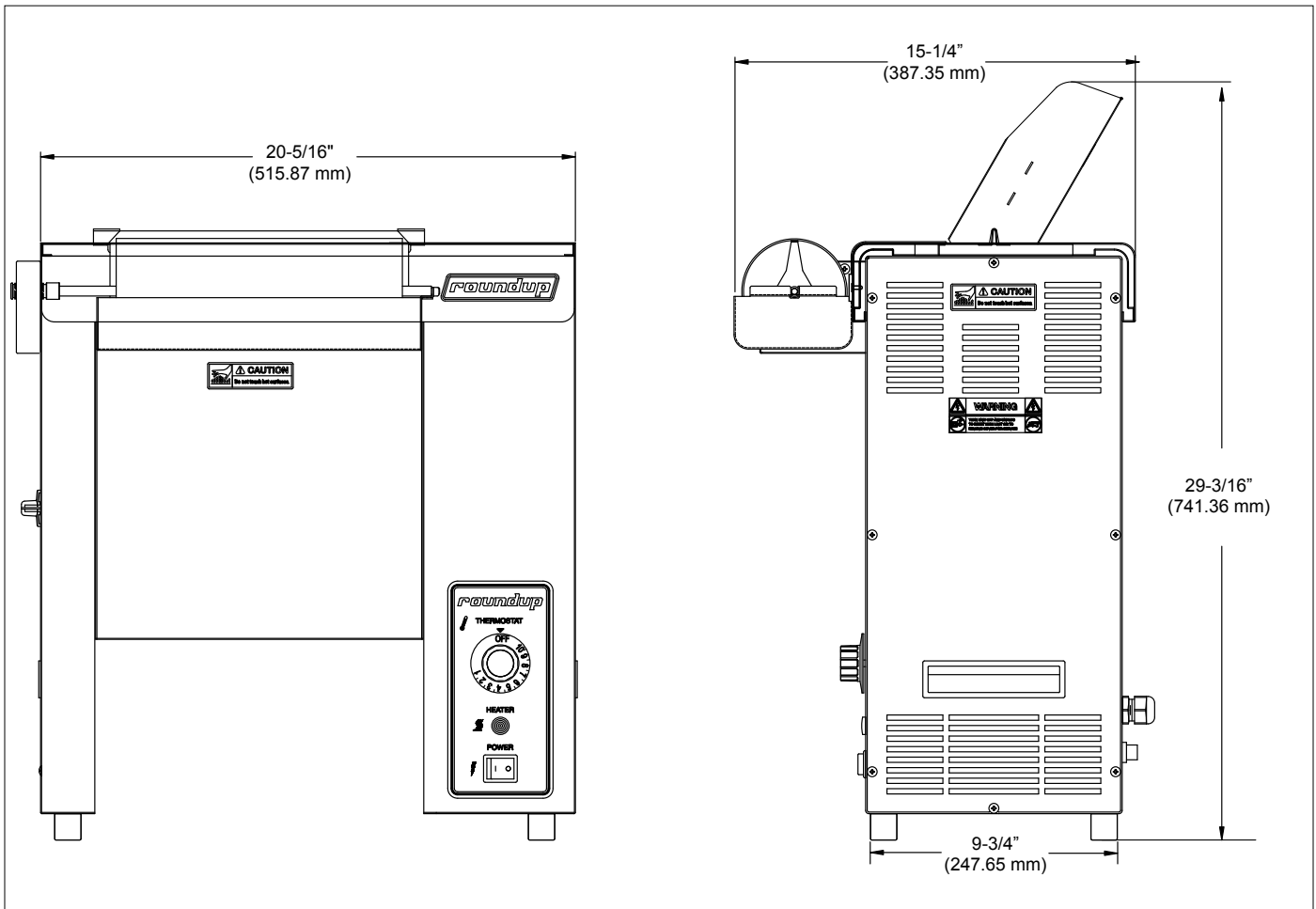
C = COMMERCIAL

TYPE OF PLUG

V = NEMA 6-20P

F = NEMA 5-15P

#### Dimensions



## INSTALLATION

### Unpacking

1. Remove unit and all packing materials from shipping carton.
2. Open the large box. It should contain:
  - Bun Chute (Figure 1)
  - Butter Wheel and Pan (Figure 1)
  - Two Release Sheets (Figure 1)
  - Owner's Manual
  - Authorized Service Agency Directory (for warranty service)
3. Remove all packing materials and protective coverings from the unit and parts.

**NOTE: If any parts are missing or damaged, contact A.J. Antunes & Co. IMMEDIATELY at 630-784-1000.**

### Equipment Setup

When placing the toaster into service, pay attention to the following guidelines.

- Make sure power to the unit is off and the toaster is at room temperature.
- Do NOT block or cover any openings on the unit.
- Do NOT immerse cord or plug in water.
- Keep cord away from heated surfaces.
- Do NOT allow cord to hang over edge of table or counter.
- Connect the unit to the power supply. Refer to the specification plate for the proper voltage.

### Assembling the Unit

**NOTE: The factory has pre-installed a Release Sheet over the Platen (Figure 1). Verify that it is properly in place before proceeding.**

1. Remove Bun Chute from the box and install (Figure 1).
2. Remove Butter Wheel and Pan from box.
3. Install the Pan over the front edge of the Heat Shield and place the Butter Roller in pan and engage in to gear case (Figure 1).

**IMPORTANT: Make sure Heat Shield is activating the Conveyor Interlock Switch (Figure 1). The conveyors will not rotate unless the Heat Shield is in place and switch is activated.**

|   |
|---|
| <b>⚠ CAUTION ⚠</b>  |
| Failure to use Release Sheets may result in damage to the unit and loss of warranty coverage. |

**NOTE: Check the Release Sheet to make sure it is not caught in the conveyor. Additional Release Sheets can be obtained through your Authorized Service Agency by ordering P/N 7000249 (3-Pack) or P/N 7000250 (10-Pack).**

### INSTALLATION (continued)

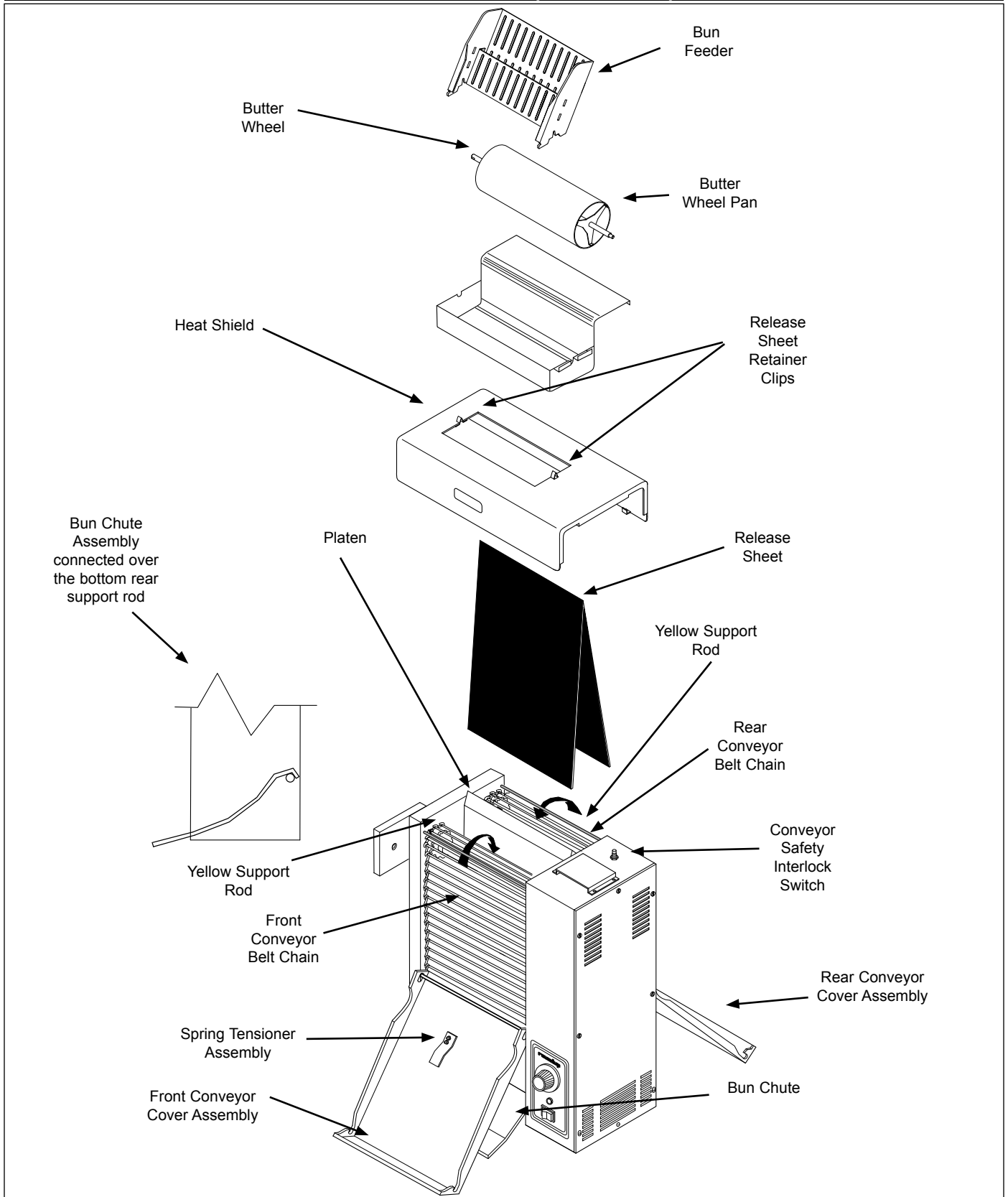


Figure 1. VCT-1000 Toaster With Mechanical Driven Butter Wheel

## OPERATION

### Operating Instructions

**⚠ IMPORTANT ⚠**

Verify that the Release Sheet is installed completely over the Platen (Figure 1) before proceeding. Failure to use Release Sheet may cause permanent damage to the Platen surface that is NOT covered by warranty.

1. Set the Bun Thickness Compression Knobs (Figure 3) to the desired settings for crown and heels.
2. Turn the unit on (Figure 2).
3. Turn the Temperature Control (Figure 2) to 10. Allow the unit to warm up for 30 minutes before proceeding.
4. Slide buns across the rotating Butter Wheel with the cut face down and drop buns into the Bun Feeder (Figure 2). Cut sides of heel and crown must face each other and slide against the Release Sheet.

**NOTE: After initial run of 4–6 buns, adjust controls according to the desired finished product.**

5. Toasted product will drop into the Bun Landing Area (Figure 2).
6. Test at least 4 buns before putting toaster into service. Turn Temperature Control to lower setting for lighter toasting or to higher setting for darker toasting.
7. Turn the unit off when finished toasting and follow the daily cleaning procedures.

### Safety Features

#### HI-LIMIT RESET BUTTON

A Hi-Limit Control turns off electrical power to the Platen if it overheats. To reset this control, allow 10-15 minutes for the unit to cool down. Then remove the protective cap and press the Reset Button located at the rear of the unit (Figure 2).

**NOTE: If the unit requires continuous resetting, contact your Authorized Service Agency.**

#### CONVEYOR INTERLOCK SAFETY SWITCH

A Conveyor Interlock Safety Switch is located on top of the unit under the Heat Shield (Figure 1). **The Conveyor Belt Chains will NOT rotate unless the Heat Shield is seated properly in place and activating the Conveyor Interlock Safety Switch.**

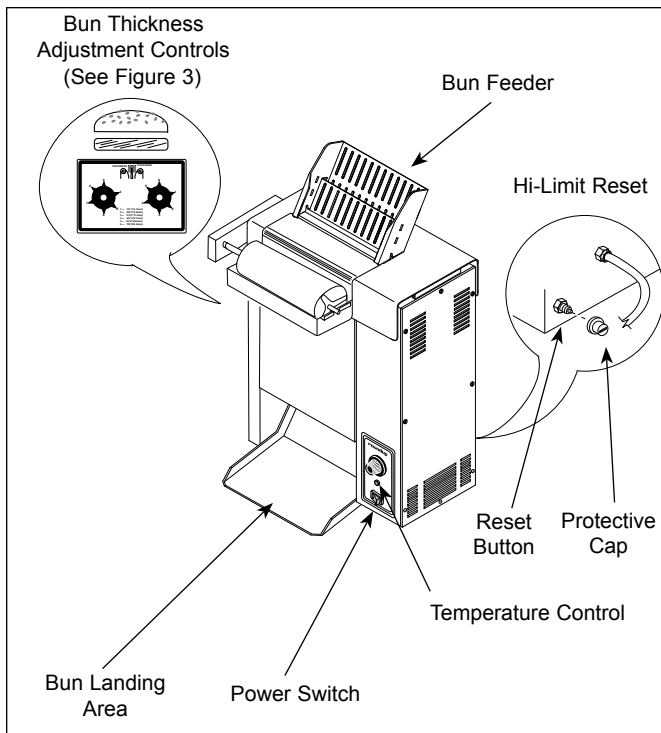


Figure 2. Toaster Controls

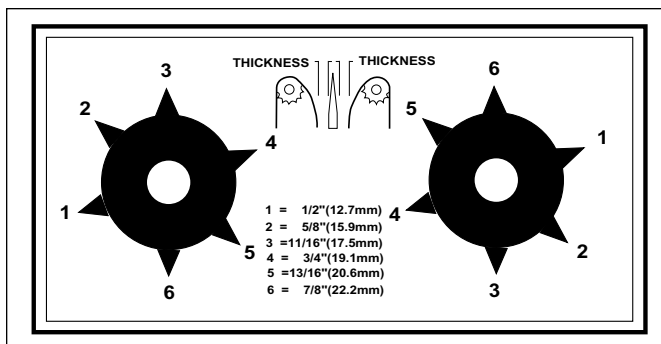


Figure 3. Bun Thickness Compression Knobs

### MAINTENANCE

#### ⚠ CAUTION ⚠

Turn the power off, unplug the power cord, and allow the unit to cool down for 30 minutes before performing any service or maintenance.

#### ⚠ CAUTION ⚠

To prevent damage to the unit, do NOT use abrasive cleaners on the Release Sheet. Failure to use properly cleaned Release Sheets may result in damage to the unit and loss of warranty coverage.

### Daily Cleaning

**NOTE: Pre-buttering/pre-oiling the buns before feeding them into the toaster will lead to butter/oil accumulation on the black and silver Release Sheet. This accumulation is normal. However, excessive buildup throughout the day can lead to buns sticking and burning. It is recommended that the Release Sheet be replaced with a clean/new Release Sheet once for every 6 hours of toaster operation. The dirty Release Sheet can be soaked in hot soapy water for later cleaning. Continue to rotate Release Sheets, alternating between the black and silver sides, to maximize usage.**

#### Tools Required:

- Heat-Resistant Gloves
  - Clean Towels
  - Multipurpose Detergent Solution
  - Sanitizer Solution
1. Turn the power off, unplug the power cord, and allow the unit to cool for 30 minutes.
  2. Put on heat-resistant gloves and remove the Butter Wheel, Pan, Heat Shield, and Bun Chute (Figure 1).
  3. Wash the Butter Wheel, Pan, Heat Shield, and Bun Chute in soapy water, rinse, and then wipe them with a damp sanitized towel. Allow them to air dry.
  4. Remove the Release Sheet and place it on a clean, flat dry surface.
  5. Wipe the silver side with a **clean** towel dampened with **Multipurpose Detergent Solution** immediately followed by a second clean towel dampened with sanitizer. Allow it to air dry before continuing.
  6. Once the silver side of the Release Sheet is dry, Repeat Step 5 on the black side. If properly cleaned, the Release Sheet surface should be smooth to the touch when dry.

7. Open the front Conveyor Cover and firmly wipe the Conveyor Belt Chain (Figure 1) from left to right and top to bottom with a clean towel dampened with **Multipurpose Detergent Solution** immediately followed by a second clean towel dampened with sanitizer solution.
8. Close the front Conveyor Cover, open the rear Conveyor Cover, and clean the Conveyor Belt Chain as described in Step 7.
9. Close the rear Conveyor Cover and reinstall the Heat Shield. Then plug in the power cord, turn the unit on, count 15 seconds, then turn the unit off and unplug the unit. **This will allow the uncleaned sections to be exposed.**
10. Open the rear Conveyor Cover again, clean the newly exposed section of the Conveyor Belt Chain in the same manner as before. Close the Conveyor Cover.
11. Open the front Conveyor Cover again and clean the newly exposed section of the Conveyor Belt Chain in the same manner as before.
12. Close the front Conveyor Cover and wipe down the outside of the toaster with a clean, damp, sanitized towel.
13. Install a new or a clean Release Sheet, using the reverse side, by draping it over both sides of the Platen with the crease centered on the Platen.

**NOTE: Rotate from the black side to the silver side daily to prolong the life of the Release Sheet.**

14. Install the Bun Chute so the hooks are installed over the lower rear yellow Support Rod.
15. Install the Heat Shield with the Release Sheet retainer clips securely over the Release Sheet and Platen.
16. Reinstall the Pan and Butter Wheel and plug in the unit.

**NOTE: Make sure the Heat Shield is activating the Conveyor Safety Interlock Switch. The conveyors will not rotate unless the Heat Shield is in place and the switch is activated.**

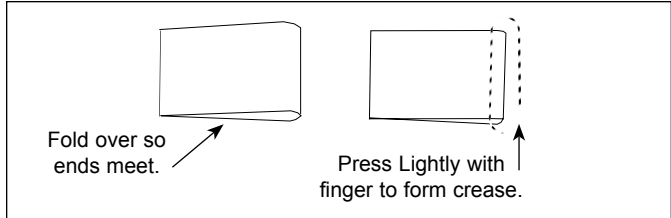
**NOTE: Additional Release Sheets can be purchased through your Authorized Service Agency under P/N 7000249 (3-Pack) or P/N 7000250 (10-Pack).**

## MAINTENANCE (continued)

### Replacing the Black and Silver Release Sheet (Every 4–6 weeks)

**NOTE:** Depending on toaster usage and on how well it is cleaned daily, the black and silver Release Sheet may last between 30–45 days.

1. Remove and discard the Release Sheet.
2. Lay a new Release Sheet on a clean, dry surface and fold it in half lengthwise. Gently crease it at the fold using only your fingers.
3. Install the Release Sheet just as you would after daily cleaning (Figure 4).



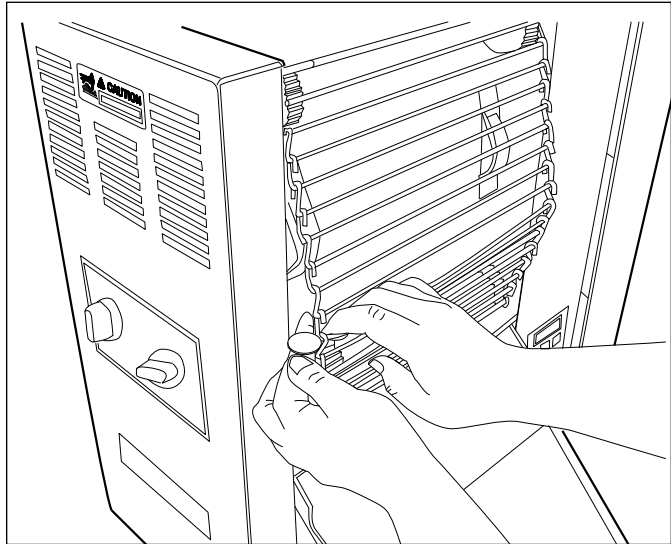
**Figure 4. Folding The Release Sheet**

### Checking the Conveyor Belt Chains (Every 3–6 Months)

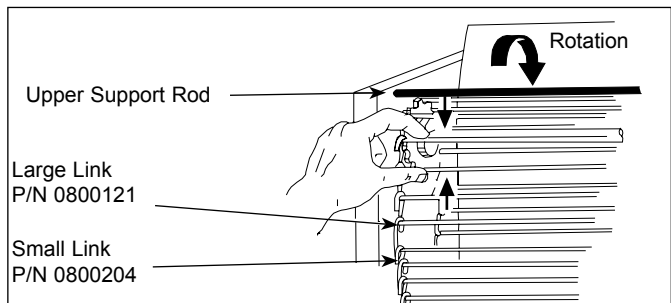
**NOTE:** The Bun Thickness Compression Knobs (Figure 3) must be set to “6 & 6” prior to measuring or removing or reinstalling the Conveyor Belt Chains.

#### MEASURING AND ADJUSTING CONVEYOR BELT CHAINS

1. Turn the unit off, unplug the power cord, and allow the unit to cool.
2. Remove the Bun Feeder, Butter Wheel, Pan, and Heat Shield (Figure 1) and set the Bun Thickness Compression Knobs to 6 & 6.
3. Facing the toaster, locate the approximate center-point of the Conveyor Chain.
4. Pull the Conveyor Chain away from the edge of the toaster (Figure 5).
5. Stand a U.S. Dime on end between the frame and the chain (Figure 5).
6. If the gap is significantly wider than the coin, REMOVE links as described below.
7. Disconnect the Conveyor Belt Chain by squeezing any two links together and unhooking both ends of one link (Figure 6). Needle-nose pliers may be used.
8. Remove one 1/2” link from the belt.
9. Reassemble the Conveyor Belt Chain onto the sprockets as described below in Replacing Conveyor Belt Chains.



**Figure 5. Measuring Conveyor Belt Chains**



**Figure 6. Removing Conveyor Belt Chain**

10. Measure the gap again to ensure it is not too tight.
11. Check the opposite side of the toaster using the same steps.

**NOTE:** If the Conveyor Belt Chain is too tight to be reassembled, remove an additional 1/2” small link and install a 3/4” large link in its place. This will shorten the Conveyor Belt Chain by 1/4” overall.

12. Reassemble the unit and return to service.

### MAINTENANCE (continued)

#### REPLACING CONVEYOR BELT CHAINS

1. Disconnect the Conveyor Belt Chain by squeezing any two links together and unhooking both ends of one link (Figure 6). Needle-nose pliers may be used.
2. Carefully remove the Conveyor Belt Chain by lifting it up and away from the Upper Support Rod.
3. Place the replacement Conveyor Belt Chain on the top sprockets with hook ends down. Check for correct positioning (Figure 6).

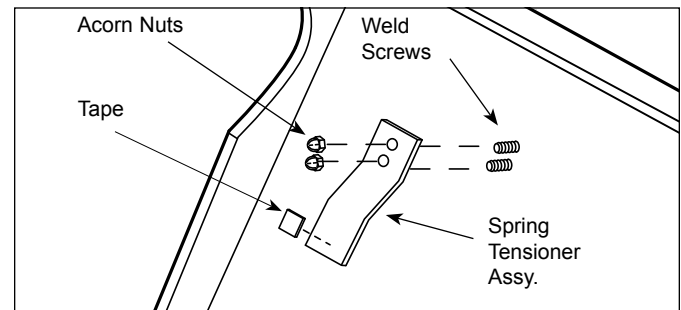
**NOTE: The ends of the hooks must point down. (Figure 6).**

4. Wrap the Conveyor Belt Chain around the top and lower sprockets and connect by hooking both ends together.

**NOTE: Make sure the Conveyor Belt Chain is installed under the Upper Support Rod and over the Lower Support Rod.**

#### Replacing the Spring Tensioners

1. Remove the Acorn Nuts (Figure 7).
2. Remove the old Spring Tensioner Assembly.
3. Replace Tensioner Assembly and reassemble unit.



**Figure 7. Replacing Spring Tensioner Assy.**

## TROUBLESHOOTING

### WARNING

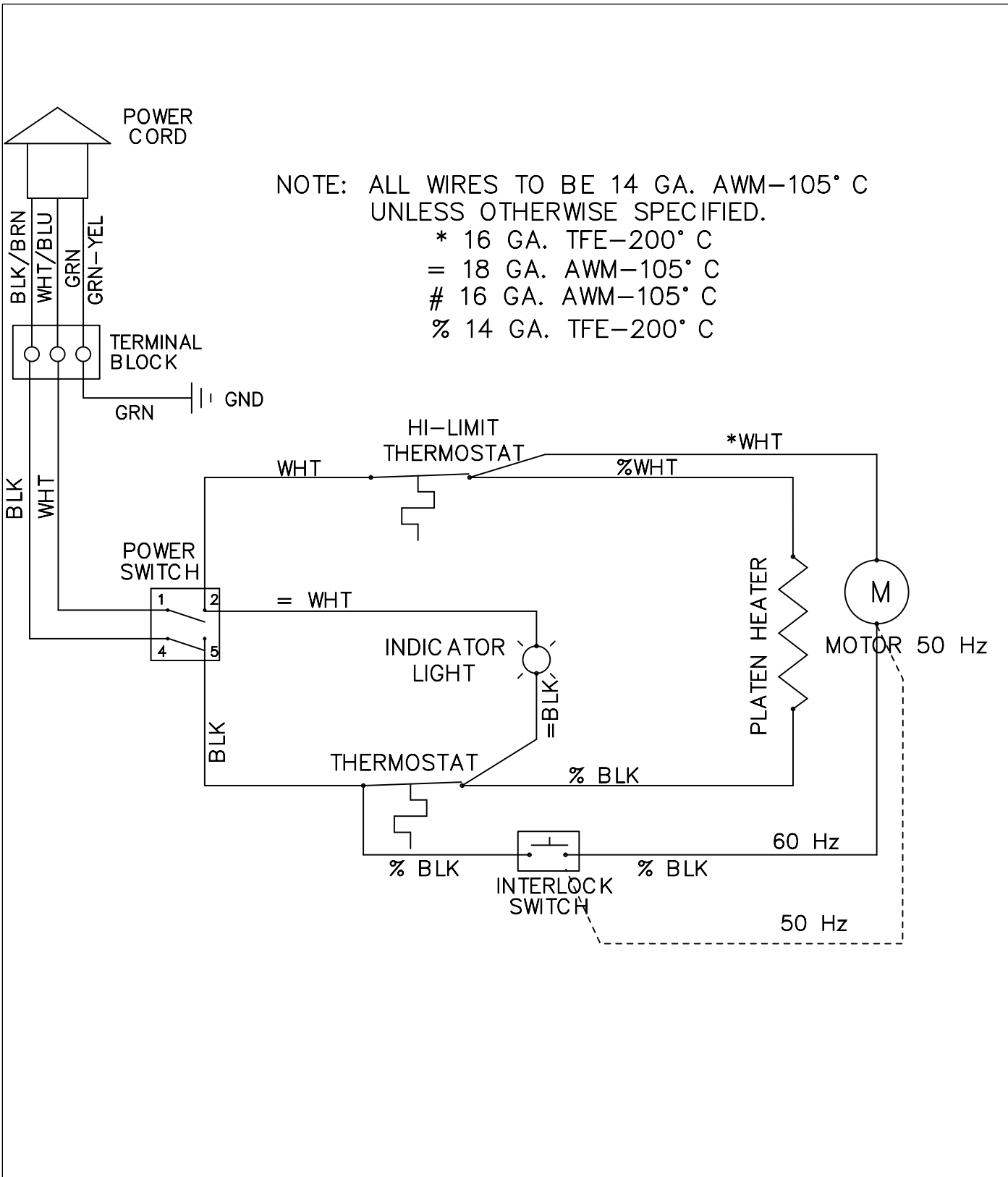
To avoid possible personal injury and/or damage to the unit, inspection, test, and repair of electrical equipment should be performed by qualified service personnel. The unit should be unplugged when servicing, except when electrical tests are required. Use extreme care during electrical circuit tests. Live circuits will be exposed.

| Problem  | Possible Cause   | Corrective Action  |
|--|--|--|
| No heat and conveyor belts do not move.                              | Toaster is installed incorrectly.                                  | Perform the installation and operating procedures found in the Installation and Operation sections of this manual.   |
|  | Inoperable power cord or power switch.                             | Check receptacle for correct voltage (see the Specifications section of this manual).<br><br>If necessary, contact your maintenance person or Authorized Service Agency for service. |
|  | Hi-Limit Control is tripped.                                       | Reset the Hi-Limit Control.  |
|  | Wiring Problem.  | Contact your maintenance person or Authorized Service Agency for service.  |
| No heat but Conveyor Belt Chains rotate.                             | Wiring Problem.  | Contact your maintenance person or Authorized Service Agency for service.  |
|  | Inoperative Platen.  |  |
|  | Inoperable Thermostat  |  |
| Platen is hot but Conveyor Belt Chains do not rotate.                | Heat Shield not installed or is installed improperly.              | Install Heat Shield (Figure 1).  |
|  | Conveyor Safety Interlock switch not activated by the heat shield. | Re-install the Heat Shield correctly so that the Heat Shield applies appropriate pressure on the Conveyor Safety Interlock switch.   |
|  | Spring Tensioner Assembly is damaged or missing.                   | Replace Spring Tensioner if damaged or missing.  |
|  | Conveyor Belt Chain links too loose.                               | Adjust Conveyor Belt Chain length as described in the Maintenance section of this manual.  |
|  | Inoperable Drive Motor.  | Contact your maintenance person or Authorized Service Agency.  |
|  | Loose Drive Motor Sprocket Setscrew.                               |  |
|  | Drive Motor Chain has fallen off sprocket(s).                      |  |
|  | Inoperable Safety Interlock Switch.                                |  |
| Conveyor Belts Chains hesitate to rotate and/or "skip" on sprockets. | Conveyor Belt Chains installed incorrectly.                        | Re-install Conveyor Belt Chains. Be sure that the ends of the hooks are facing down.   |
|  | Conveyor Belt Chains too loose.                                    | Adjust Conveyor Belt Chain length as described in the Maintenance section of this manual.  |
|  | Spring Tensioner Assembly is damaged or missing.                   | Replace Spring Tensioner Assembly if damaged or missing.   |

**TROUBLESHOOTING (continued)**

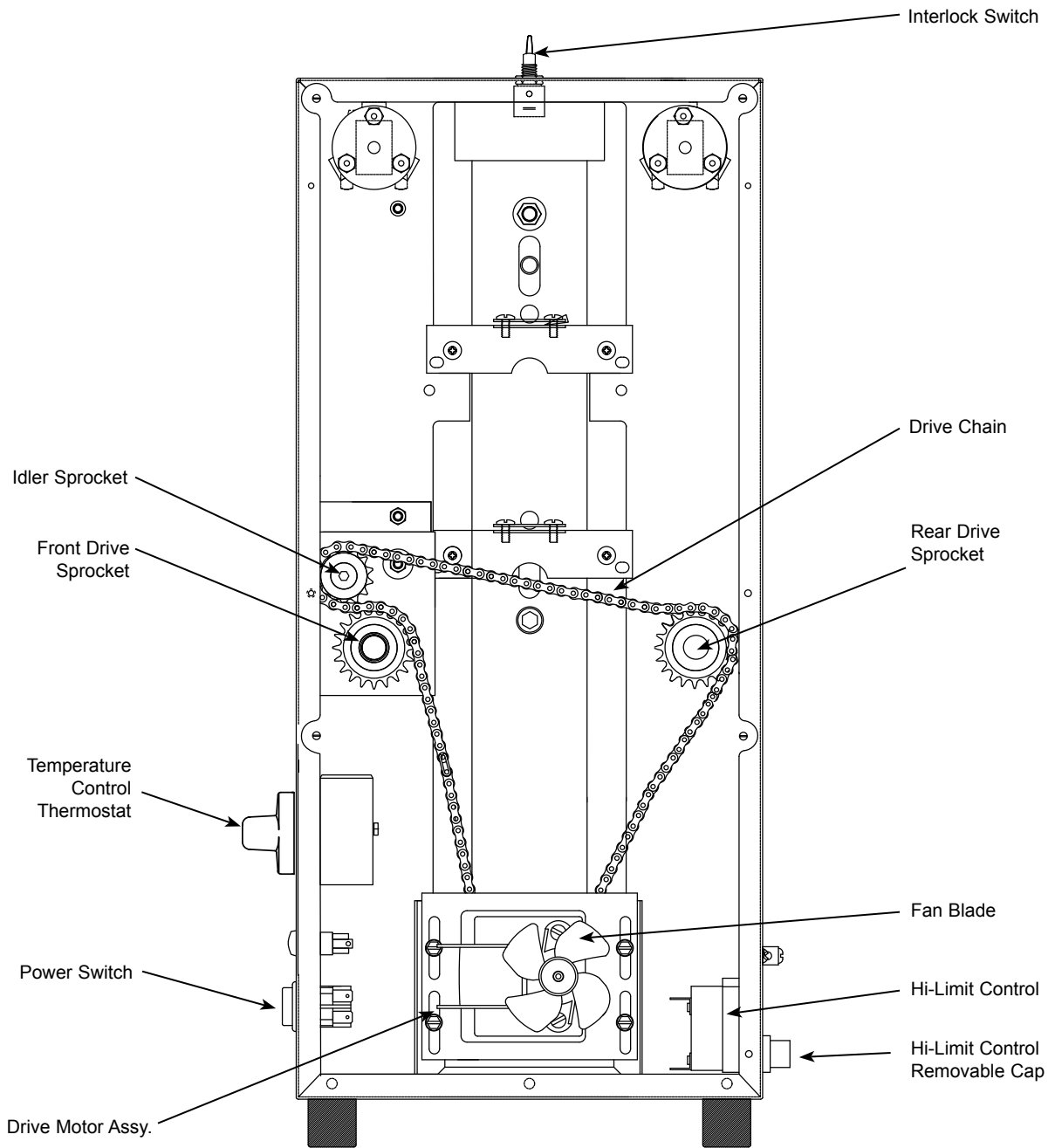
| <b>Problem</b>   | <b>Possible Cause</b>  | <b>Corrective Action</b>   |
|--|--|--|
| Product is over toasted, Platen heat is too high, or drop time is too slow.      | Temperature set too high.  | Set temperature control to a lower setting.  |
|  | Bun Thickness Compression Knobs set improperly.  | Measure bun thickness and set Bun Thickness Compression Knobs correctly.   |
|  | Buns sticking on Release Sheet.  | Clean or replace Release Sheet according to the procedure in the Maintenance section of this manual.   |
|  | Conveyor Cover Assembly not installed properly.  | Re-install Conveyor Cover Assembly.  |
|  | Loose Sprocket Setscrews.  | Check drive chain for kinks, broken or bent links, or other damage. Check motor sprocket and drive sprockets; tighten setscrew on flat of shaft if required. Check for damaged/worn sprocket and replace as required.  |
|  | Conveyor Belt Chain too loose.   | Adjust Conveyor Belt Chain length as described in the Maintenance section of this manual.  |
|  | Spring Tensioner Assembly is damaged or missing.   | Replace Spring Tensioner Assembly if damaged or missing.   |
| Product is under toast-ed, Platen heat is too low, or drop time is too fast.     | Bun Thickness Compression Knobs set improperly.  | Measure bun thickness and set Bun Thickness Compression Knobs correctly.   |
|  | Wiring problem.  | Contact your maintenance person or Authorized Service Agency for service.  |
|  | Inoperable Thermostat.   |  |
|  | Conveyor Drive Motor inoperable or incorrect conveyor motor or sprocket installed.                     |  |
| Product is getting stuck, or Conveyor Belt Chains stop when product is toasting. | Bun Thickness Compression Knobs Set improperly.  | Measure bun thickness and set Bun Thickness Compression Knobs correctly.   |
|  | Release Sheet not cleaned properly, is missing, or is too old.   | Clean or replace Release Sheet as described in the Maintenance section of this manual.   |
|  | Conveyor Drive motor inoperative or incorrect voltage motor installed in toaster.                      | Contact your maintenance person or Authorized Service Agency for service.  |
|  | Conveyor Drive Chain loose, worn, or broken. Loose motor drive sprocket.                               | Check drive chain for kinks, broken or bent links, or other damage. Check motor sprocket and drive sprockets, tighten setscrew on flat of shaft if required. Check for damaged/worn sprockets and replace as required. |
|  | Conveyor Belt Chain too loose.   | Adjust Conveyor Belt Chain length as described in the Maintenance section of this manual.  |
|  | Spring Tensioner Assembly is damaged or missing.   | Replace Spring Tensioner Assembly if damaged or missing.   |
|  | Release Sheet is sticky and not smooth (due to improper cleaning or excessive butter/oil accumulation. | Clean Release Sheets according to the Daily Cleaning section of this manual. Replace if the Release Sheet is still sticky after cleaning.  |

**WIRING DIAGRAM**

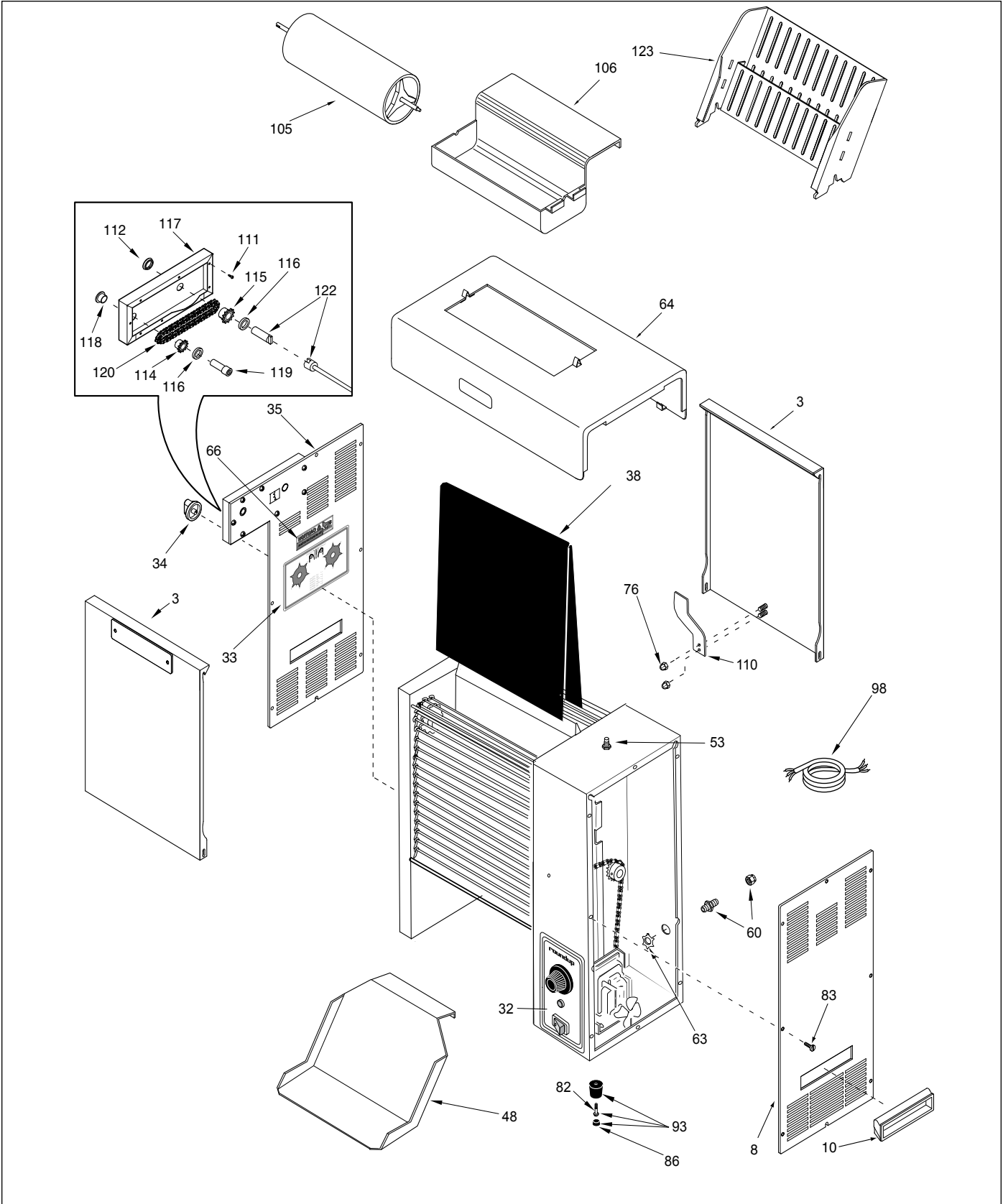


**REPLACEMENT PARTS**

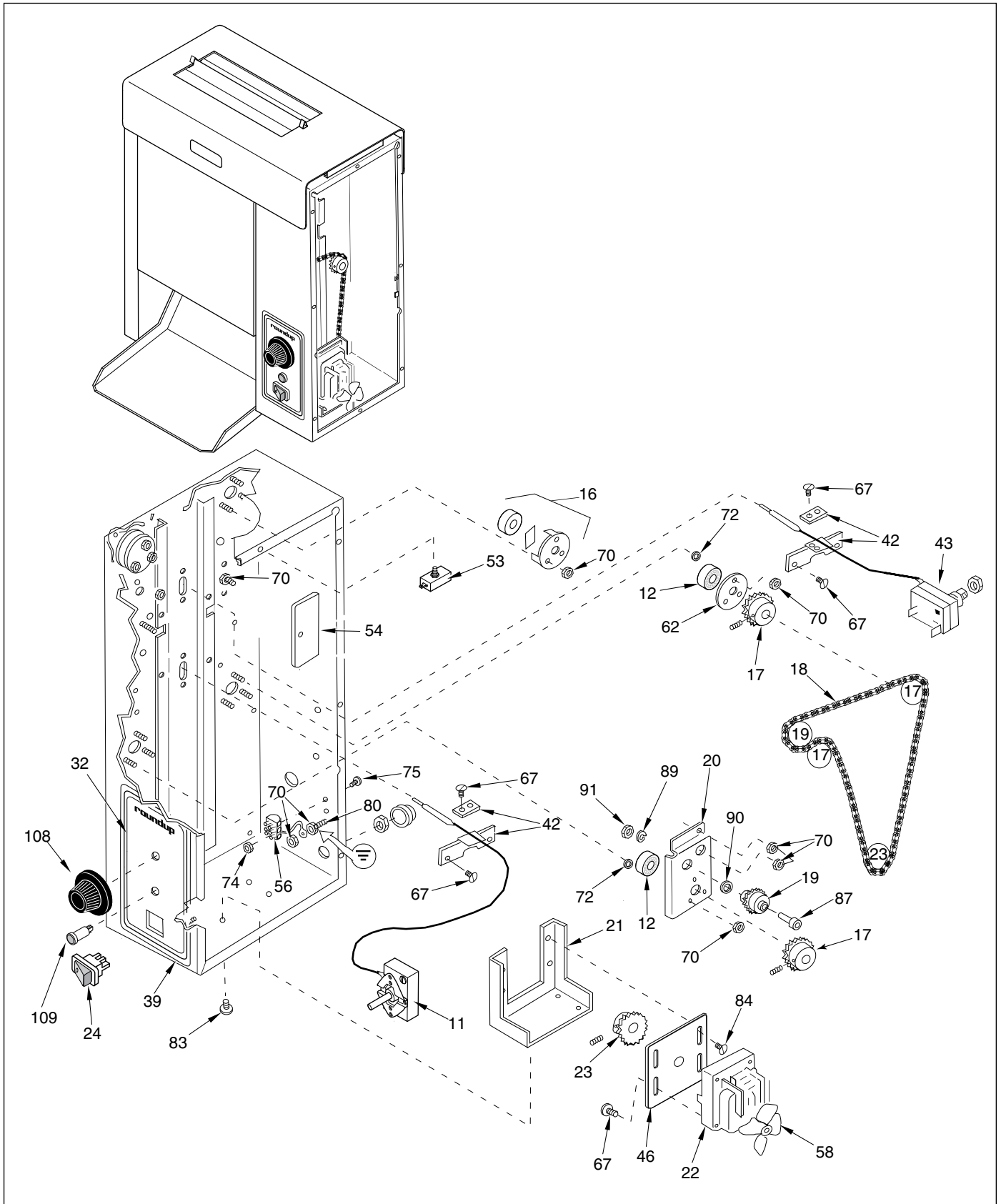
**Parts Identification**



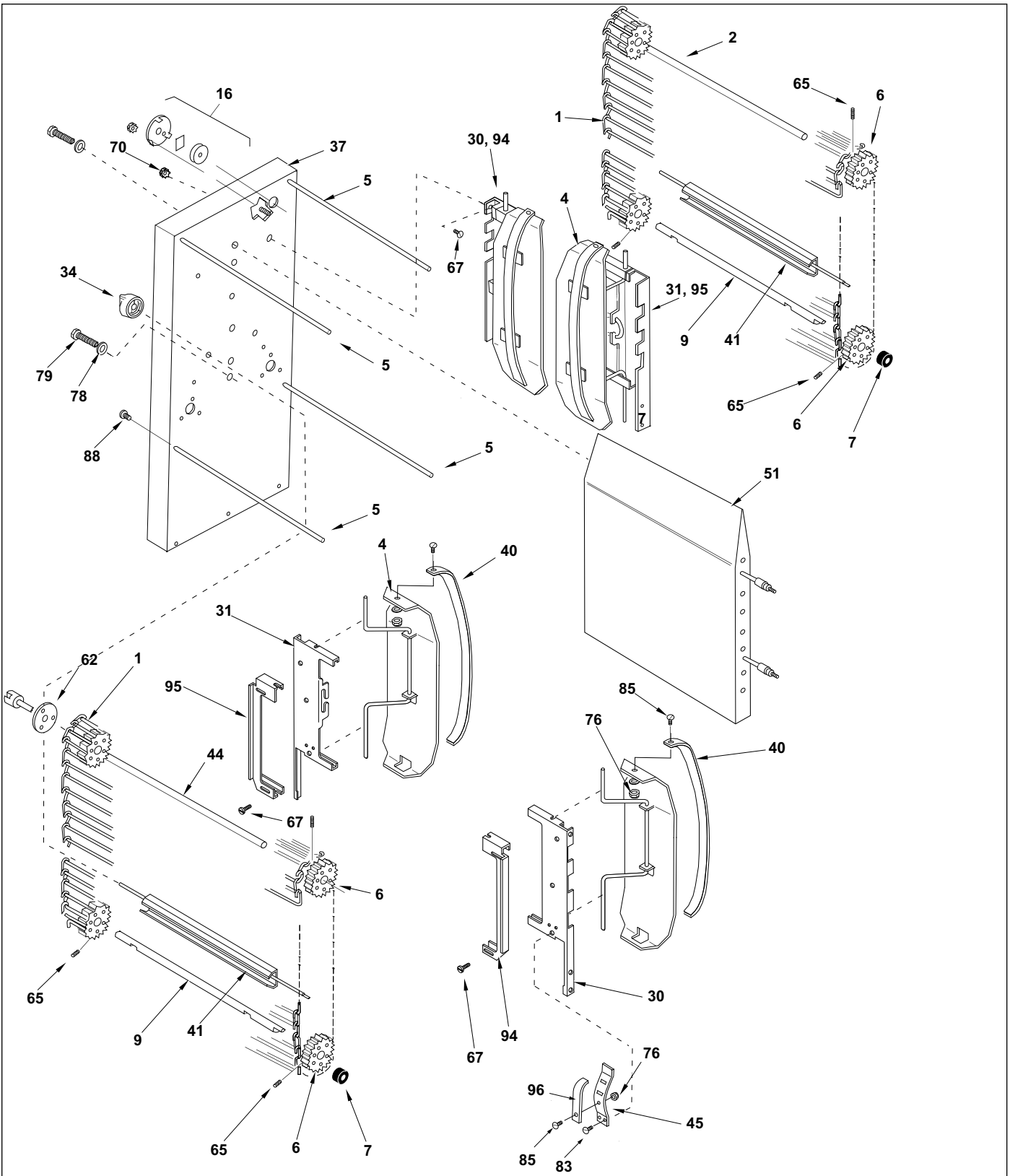
**REPLACEMENT PARTS (continued)**



### REPLACEMENT PARTS (continued)



## REPLACEMENT PARTS (continued)



### REPLACEMENT PARTS (continued)

| Item | Part No. | Description  | Qty. |
|------|----------|--|------|
| 1    | 0011266  | Conveyor Belt<br>(Consists of the items below)               | 2    |
|      | 0800204  | 1/2" Pitch Link, Small                                       | 2    |
|      | 0800121  | 3/4" Pitch Link, Large                                       | 38   |
| 2    | 2150117  | Idler Shaft  | 1    |
| 3    | 0011609  | Conveyor Cover Assy.   | 2    |
| 4    | 0010475  | Tensioner Assy. (Incl. #40, 76, 85)                          | 4    |
| 5    | 7000644  | Rod, Conveyor Cover with screw                               | 4    |
| 6    | 7000207  | Sprocket w/setscrew  | 8    |
| 7    | 7000199  | Spacer Kit (Pack of 2) Thrust                                | 2    |
| 8    | 0011444  | Control Housing Cover Assy.                                  | 1    |
| 9    | 2150118  | Drive Shaft  | 3    |
| 10   | 2100212  | Handle   | 2    |
| 11   | 4030355  | Thermostat   | 1    |
| 12   | 7000296  | Ball Bearing - Steel (Pack of 2)                             | 1    |
| 16   | 7000167  | Bearing & Retainer Kit                                       | 6    |
|      | 7000224  | Bearing & Retainer Kit<br>(Includes 6 of # 7000167)          | 1    |
| 17   | 2150181  | Drive Sprocket   | 2    |
| 18   | 2150187  | Drive Chain  | 1    |
| 19   | 0011299  | Idler Sprocket & Bearing                                     | 1    |
| 20   | 0011300  | Bracket, Idler Sprocket Assy.<br>(Incl. #91, 89, 90, 19, 87) | 1    |
| 21   | 0503589  | Bracket, Motor Mounting                                      | 1    |
| 22   | 7000240  | Drive Motor Kit 230V, 9 RPM                                  | 1    |
|      | 7000282  | Drive Motor Kit 120V, 9 RPM<br>(Mfg. No. 9210725 only)       | 1    |
| 23   | 2150173  | Sprocket w/Setscrew, Motor                                   | 1    |
| 24   | 4010231  | Power Switch, 250V   | 1    |
|      | 4010232  | Power Switch, 125V<br>(Mfg. No. 9210725 only)                | 1    |
| 30   | 0503496  | Tensioner Bracket, Right                                     | 2    |
| 31   | 0503497  | Tensioner Bracket, Left                                      | 2    |
| 32   | 1000899  | Label, Housing   | 1    |
| 33   | 1001047  | Label, Dial Compression                                      | 1    |
| 34   | 2100253  | Knob, Control  | 2    |
| 35   | 0011552  | End Housing Cover Assy.                                      | 1    |
|      | 0011445  | End Housing Cover Assy.<br>(Mfg. No. 9210726 only)           | 1    |
| 37   | 0021170  | Weldment, End Housing  | 1    |
| 38   | 7000249  | Release Sheet (Pack of 3)                                    | -    |
|      | 7000250  | Release Sheet (Pack of 10)                                   | -    |
| 39   | 0021194  | Control Housing  | 1    |
| 40   | 7000121  | Slide Rail Kit (Incl. 2 Slide Rails)                         | 2    |
| 41   | 0021207  | Conveyor Cam   | 2    |
| 42   | 7000176  | Retainer Kit   | 2    |
| 43   | 4030332  | High Limit Control   | 1    |
| 44   | 0011573  | Idler Shaft Assy. (Top, Front)                               | 1    |
| 45   | 0503455  | Tension Spring, Inner  | 4    |
| 46   | 0503590  | Slide Plate, Motor Mounting                                  | 1    |
| 48   | 0503677  | Bun Chute  | 1    |
| 51   | 7000200  | Platen, 208-240V   | 1    |
|      |          | Platen, 120V (Mfg. No. 9210725 only)                         | 1    |
| 53   | 7000400  | Interlock Switch   | 1    |
| 54   | 0503608  | Cover Plate  | 2    |
| 56   | 4060355  | Terminal Block   | 1    |
| 58   | 4000170  | Fan Blade, Motor   | 1    |
| 60   | 040K251  | Strain Relief Kit Incl. #63                                  | 1    |
| 61   | 05P2199* | Spacer   | 4    |
| 62   | 0500464  | Retainer, Bearing  | 2    |
| 63   | 040P138* | Locknut, 1/2"  | 1    |

| Item | Part No. | Description  | Qty. |
|------|----------|--|------|
| 64   | 0011528  | Heat Shield Assy.                                      | 1    |
| 65   | 325P163* | Setscrew, 1/4-28 x 5/16"                               | 8    |
| 66   | 100P864* | Label, Caution Hot                                     | 1    |
| 67   | 310P109* | Screw, Hex, #10-32 x 3/8"                              | 2    |
| 68   | 304P105* | Nut, #4-40, "KEPS"                                     | 4    |
| 69   | 406P107* | Cable Tie  | 1    |
| 70   | 308P143* | Nut, #8-32, "KEPS"                                     | 6    |
| 71   | 310P103* | Screw, Hex, #10-32 x 1/4"                              | 4    |
| 72   | 310P157* | Washer, #10  | 6    |
| 73   | 308P101* | Nut, #8-32   | 3    |
| 74   | 306P101* | Nut, Hex, #6-32  | 2    |
| 75   | 306P123* | Screw, #6-32 x 7/8"                                    | 2    |
| 76   | 308P145* | Nut, Hex Acorn, #8-32                                  | 14   |
| 77   | 100P900* | Label, Service   | 1    |
| 78   | 325P104* | Washer, 1/4"   | 4    |
| 79   | 325P109* | Screw, 1/4-20 x 1/2"                                   | 4    |
| 80   | 308P124* | Screw, 1-Way, #8-32 x 1/2"                             | 1    |
| 82   | 310P136* | Screw, #10-32 x 1-1/4"                                 | 4    |
| 83   | 308P133* | Screw, #8-32 x 1/4"                                    | 1    |
| 84   | 308P157* | Screw, Tap, #8-32 x 3/8"                               | 20   |
| 85   | 308P181* | Screw, Flat Hd., #8-32 x 3/8"                          | 4    |
| 86   | 218P145* | Cover, Leg, Bumper                                     | 4    |
| 87   | 331P103* | Shoulder Bolt, 5/16-18 x 1"                            | 1    |
| 88   | 306P105* | Screw, #6-32 x 1/2"                                    | 8    |
| 89   | 331P106* | Lockwasher, 5/16"                                      | 1    |
| 90   | 212P118* | Flat Washer, 5/16"                                     | 1    |
| 91   | 331P101* | Nut, Hex, 5/16-18                                      | 1    |
| 92   | 300P102* | Nut, Tinnerman   | 2    |
| 93   | 210K230  | Bumper, Recess Leg, 1" (Qty. of 4)                     | 1    |
| 94   | 0503495  | Retainer, Tensioner Bracket, RH                        | 1    |
| 95   | 0503507  | Retainer, Tensioner Bracket, LH                        | 1    |
| 96   | 2100259  | Slide Rail   | 4    |
| 98   | 0700452  | Power Cord 6-20P 250V                                  | 1    |
|      | 0700463  | Power Cord 5-15P 120V<br>(Mfg. No. 9210725 only)       | 1    |
| 99   | 306P104* | Screw, #6-32 x 1/4"                                    | 6    |
| 104  | 4060374  | Ground Lug   | 1    |
| 105  | 0021320  | Butter Wheel Roller                                    | 1    |
| 106  | 0503987  | Butter Pan   | 1    |
| 108  | 2100133  | Knob, Thermostat                                       | 1    |
| 109  | 4060229  | Indicator Light, Amber 250V                            | 1    |
|      | 4060323  | Indicator Light, Amber 120V<br>(Mfg. No. 9210725 only) | 1    |
| 110  | 0011374  | Spring Tensioner Assembly                              | 2    |
| 111  | 308P157  | Screw, #8-32 x 3/8"                                    | 7    |
| 112  | 2150204  | Bearing, Shaft, 1/2"                                   | 4    |
| 114  | 2150212  | Sprocket, 12 Tooth                                     | 1    |
| 115  | 2150207  | Sprocket, 28 Tooth                                     | 1    |
| 116  | 2120149  | Spacer, Nylon  | 2    |
| 117  | 0503891  | Housing  | 1    |
| 118  | 0400295  | Plug, Pry Out  | 1    |
| 119  | 0011553  | Shaft Assembly   | 1    |
| 120  | 2150205  | Chain Drive  | 1    |
| 122  | 7000692  | Shaft Coupling Kit (Incl. Items Below)                 | 1    |
|      | 2150201  | Shaft, Drive   | 1    |
|      | 2150202  | Coupler  | 1    |
| 123  | 0021507  | Bun Feeder   | 1    |
| 124  | 2140152  | Lubricant (not shown)                                  | 1    |

\* Sold only in packages of 10.

## LIMITED WARRANTY

Equipment manufactured by Roundup Food Equipment Division of A.J. Antunes & Co. has been constructed of the finest materials available and manufactured to high quality standards. These units are warranted to be free from electrical and mechanical defects for a period of one (1) year from date of purchase under normal use and service, and when installed in accordance with manufacturer's recommendations. To insure continued operation of the units, follow the maintenance procedures outlined in the Owner's Manual. During the first 12 months, electro-mechanical parts, non-overtime labor, and travel expenses up to 2 hours (100 miles/160 km), round trip from the nearest Authorized Service Center are covered.

1. This warranty does not cover cost of installation, defects caused by improper storage or handling prior to placing of the Equipment. This warranty does not cover overtime charges or work done by unauthorized service agencies or personnel. This warranty does not cover normal maintenance, calibration, or regular adjustments as specified in operating and maintenance instructions of this manual, and/or labor involved in moving adjacent objects to gain access to the equipment. This warranty does not cover consumable/wear items. This warranty does not cover damage to the Load Cell or Load Cell Assembly due to abuse, misuse, dropping of unit/shock loads or exceeding maximum weight capacity (4 lbs). This warranty does not cover water contamination problems such as foreign material in water lines or inside solenoid valves. It does not cover water pressure problems or failures resulting from improper/incorrect voltage supply. This warranty does not cover Travel Time & Mileage in excess of 2 hours (100 miles/160 km) round trip from the nearest authorized service agency.
2. Roundup reserves the right to make changes in design or add any improvements on any product. The right is always reserved to modify equipment because of factors beyond our control and government regulations. Changes to update equipment do not constitute a warranty charge.
3. If shipment is damaged in transit, the purchaser should make a claim directly upon the carrier. Careful inspection should be made of the shipment as soon as it arrives and visible damage should be noted upon the carrier's receipt. Damage should be reported to the carrier. This damage is not covered under this warranty.
4. Warranty charges do not include freight or foreign, excise, municipal or other sales or use taxes. All such freight and taxes are the responsibility of the purchaser.
5. THIS WARRANTY IS EXCLUSIVE AND IS IN LIEU OF ALL OTHER WARRANTIES, EXPRESSED OR IMPLIED, INCLUDING ANY IMPLIED WARRANTY OR MERCHANTABILITY OR FITNESS FOR A PARTICULAR PURPOSE, EACH OF WHICH IS HEREBY EXPRESSLY DISCLAIMED. THE REMEDIES DESCRIBED ABOVE ARE EXCLUSIVE AND IN NO EVENT SHALL ROUNDUP BE LIABLE FOR SPECIAL CONSEQUENTIAL OR INCIDENTAL DAMAGES FOR THE BREACH OR DELAY IN PERFORMANCE OF THIS WARRANTY.



---

**A.J. Antunes & Co.**  
**Headquarters/Manufacturing**  
**Carol Stream, Illinois 60188 USA**  
**Phone: (630) 784-1000**  
**Toll Free: (800) 253-2991**  
**Fax: (630) 784-1650**

---

**Antunes Equipment**  
**Manufacturing (Suzhou) Ltd.,**  
**Suzhou, Jiangsu, China 215011**  
**Phone: 86-512-6841-3637**  
**Toll Free: 400-0-7878-22**  
**Fax: 86-512-6841-3907**

**[www.ajantunes.com](http://www.ajantunes.com)**