

Flatbread Toaster

Model GST-1H

Manufacturing Numbers:

9210970 & 9210971

TABLE OF CONTENTS

Table of Contents	2
Warranty	
Information	2
Service/Technical Assistance	2
Important Safety Information	3
Warnings	3
Specifications	4
Installation	5
Operation	5
Light/Dark Adjustments	5
User Mode	6
Manager Mode	6
Safety Features	6
Hi-Limit Control	6
Purging product from Toaster	6
Fault Messages	6
Error Codes	6
Daily Cleaning	7
Replacing Belts	7
Removing Belts	7
Installing Belts	7
Cleaning the Top Cooling Fan and Electrical Housing (Annually)	8
Troubleshooting	9
Replacement Parts	11
Wiring Diagram	17
NOTES	18
Limited Warranty	20

IMPORTANT

A.J. Antunes & Co. reserves the right to change specifications and product design without notice. Such revisions do not entitle the buyer to corresponding changes, improvements, additions or replacements for previously purchased equipment.

IMPORTANT

Keep these instructions for future reference. If the unit changes ownership, be sure this manual accompanies the equipment.

WARRANTY INFORMATION

Please read the full text of the Limited Warranty in this manual.

If the unit arrives damaged, contact the carrier immediately and file a damage claim with them. Save all packing materials when filing a claim. Freight damage claims are the responsibility of the purchaser and are not covered under warranty.

The warranty does not extend to:

- Damages caused in shipment or damage as result of improper use.
- Installation of electrical service.
- Normal maintenance as outlined in this manual.
- Malfunction resulting from improper maintenance.
- Damage caused by abuse or careless handling.
- Damage from moisture into electrical components.
- Damage from tampering with, removal of, or changing any preset control or safety device.

SERVICE/TECHNICAL ASSISTANCE

If you experience any problems with the installation or operation of your unit, contact Antunes Technical Service at 877-392-7854 Toll Free in the U.S and Canada or at 630-784-0874.

Fill in the information below and have it handy when calling your Authorized Service Agency for assistance. The serial number is on the specification plate located on

Purchased From

Date of Purchase

Model Number

Serial Number

Manufacturing Number

Use only genuine Antunes replacement parts in this unit. Use of replacement parts other than those supplied by the manufacturer will void the warranty.

IMPORTANT SAFETY INFORMATION

Use the following guidelines for safe operation of the unit.

- Read all instructions before using equipment.
- For your safety, the equipment is furnished with a properly grounded cord connector. Do not attempt to defeat the grounded connector.
- Install or locate the equipment only for its intended use as described in this manual. Do not use corrosive chemicals in this equipment.
- Do not operate this equipment if it has a damaged cord or plug, if it is not working properly, or if it has been damaged or dropped.
- This equipment should be serviced by qualified personnel only. Contact your nearest Authorized Service Agency for adjustment or repair.
- Do not block or cover any openings on the unit.
- Do not immerse cord or plug in water.
- Keep cord away from heated surfaces.
- Do not allow cord to hang over edge of table or counter.
- Turn the power off, unplug the power cord, and allow unit to cool down before performing any service or maintenance on the unit.

NOTE: **Turning off the power switch does NOT turn off all power to the unit.**

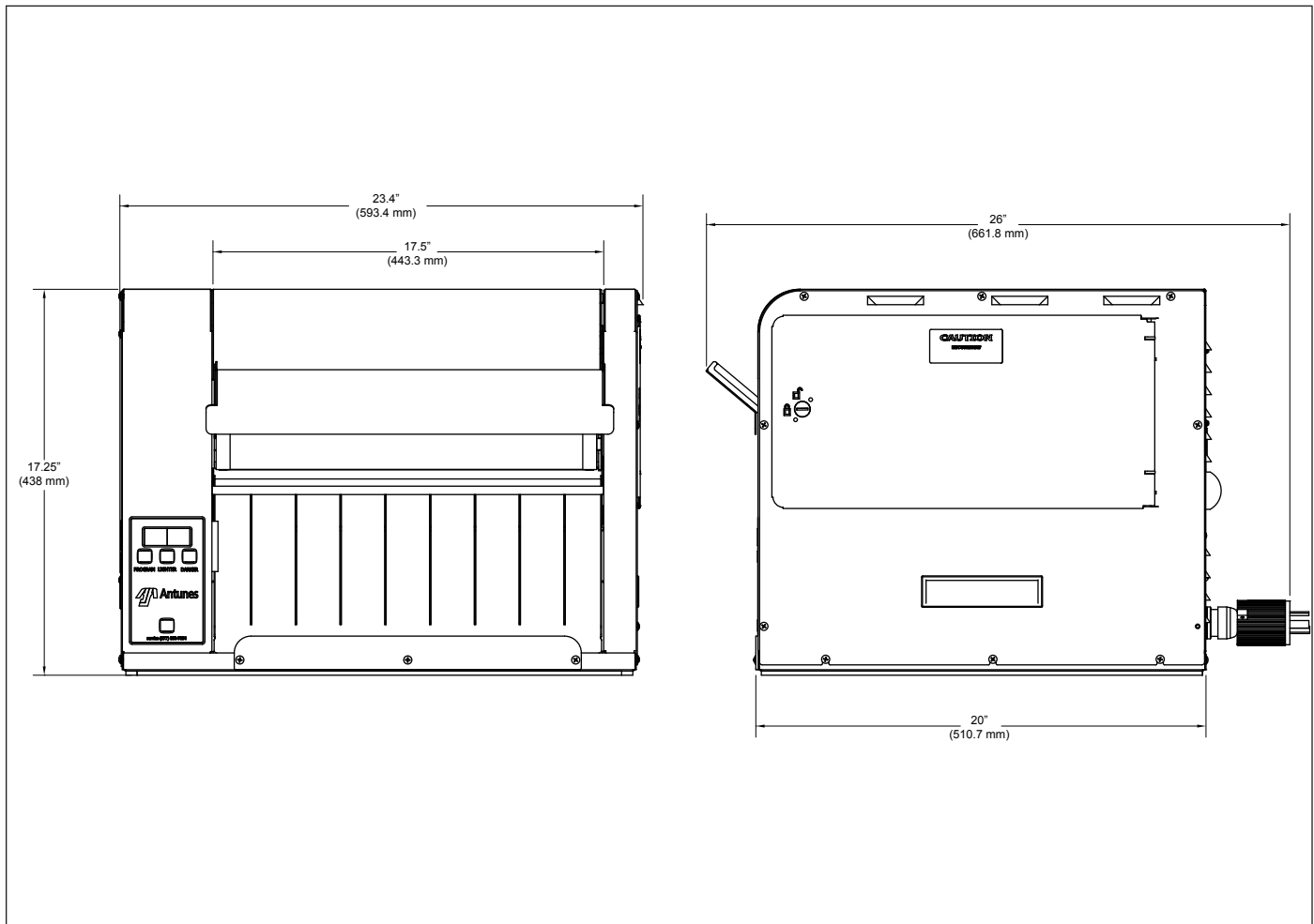
- The procedures in this manual may include the use of chemical products. These chemical products will be highlighted with bold face letters followed by the abbreviated HCS (Hazard Communication Standard). See Hazard Communication Standard manual for the appropriated Material Safety Data Sheets (MSDS).
- The equipment should be grounded according to local electrical codes to prevent the possibility of electrical shock. It requires a grounded receptacle with separate electrical lines, protected by fuses or circuit breaker of the proper rating.
- All electrical connections must be in accordance with local electrical codes and any other applicable codes.
- Do not clean this appliance with a water jet.

WARNINGS

Be advised of the following warnings when operating and performing maintenance on this unit.

- If the supply cord is damaged, it must be replaced by the manufacturer or its service agent or a similarly qualified person in order to avoid a hazard.
- Do not modify the power supply cord plug. If it does not fit the outlet, have a proper outlet installed by a qualified electrician.
- Do not use an extension cord with this appliance.
- Electrical ground is required on this appliance.
- Check with a qualified electrician if you are in doubt as to whether the appliance is properly grounded.
- When using a chemical cleaner, be sure it is safe to use on cast aluminum. Observe all precautions and warnings on product label.
- Inspection, testing, and repair of electrical equipment should only be performed by qualified service personnel.
- Do not use a sanitizing solution or abrasive materials. These may cause damage to the stainless steel finish.
- Chlorides or phosphates in cleaning agents (e.g. bleach, sanitizers, degreasers or detergents) could cause permanent damage to stainless steel equipment. The damage is usually in the form of discoloration, dulling of metal surface finish, pits, voids, holes, or cracks. This damage is permanent and not covered by warranty.
- The following tips will help in the maintenance of stainless steel equipment:
 - Always use soft, damp cloth for cleaning, rinse with clear water and wipe dry. When required, always rub in direction of metal polish lines.
 - Routine cleaning should be done daily with soap, ammonia detergent, and water.
 - Stains and spots should be sponged using a vinegar solution.
 - Finger marks and smears should be rubbed off using soap and water.
 - Hard water spots should be removed using a vinegar solution.

SPECIFICATIONS



Model & Mfg. No.	Volts	Watts	Hertz	Plug Description
GST-1H 9210970 & 9210971	208	4600	60	L6-30P 30 Amp., 250 Volt, Straight Twist Lock

INSTALLATION

1. Remove unit and all packing materials from shipping carton.
2. Open the Accessories Box. It should contain the following:
 - a. Chute
 - b. Feeder
 - c. Owner's Manual

NOTE: If any parts are missing or damaged, contact Antunes Technical Service IMMEDIATELY at 1-877-392-7854 or 1-630-784-1000.

3. Remove all packing materials and protective coverings from the unit and accessories.
4. With assistance, place the unit in the proper location.
5. Remove the top cover. Wipe the top cover, chute, and feeder with a clean sanitizer soaked towel. Allow to air dry.
6. Wipe the entire exterior of the unit with a clean sanitizer soaked towel. Allow to air dry.

NOTE: Do NOT use a dripping wet cloth. Wring out before use.

7. Attach the top cover, feeder and chute (Figure 3).

IMPORTANT

Do NOT plug in the power cord or turn the unit on before removing the wire ties indicated in the following step. Damage to the unit may result.

8. Unlock and open the side panel according to figure 2. Cut and remove the wire ties indicated in Figure 2.

When placing the toaster into service, pay attention to the following guidelines.

- Make sure the unit is off and the unit is at room temperature before plugging in the power cord.
- Do not block or cover any openings on the unit.
- Do not immerse the power cord or plug in water.
- Keep the power cord away from heated surfaces.
- Do not allow the power cord to hang over edge of table or counter.
- Place the unit on a sturdy, level table or other work surface.

- Turn the unit off if it is on.
 - Ensure the line voltage corresponds to the stated voltage on the specification label and power cord warning tag.
9. Plug the power cord into the appropriate power outlet. Refer to the specification plate for the proper voltage.

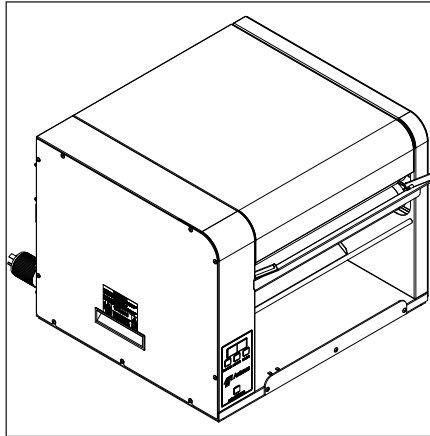


Figure 1. - Flatbread Toaster (GST-1H)

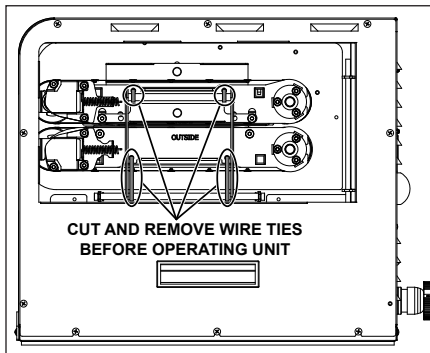


Figure 2. - Removing Wire Ties

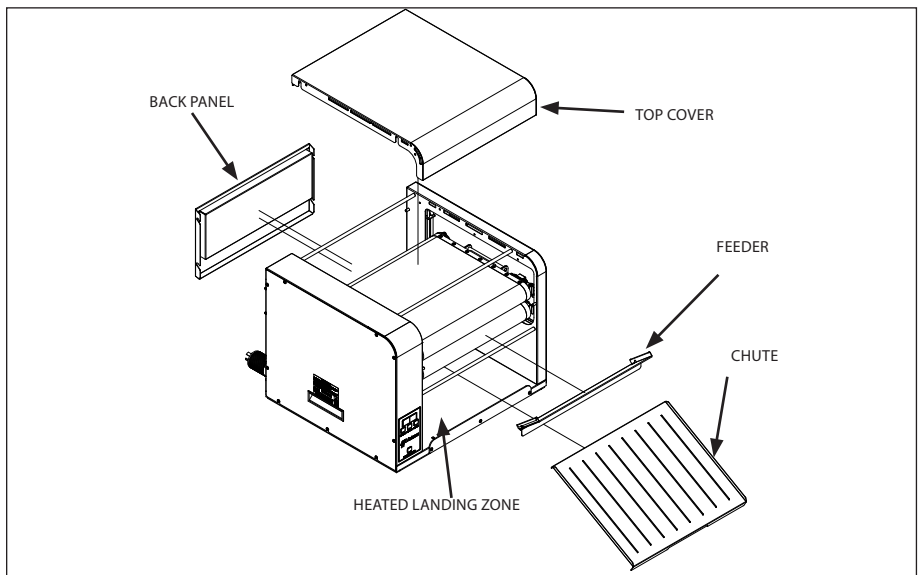


Figure 3. - Components

OPERATION

1. Press and release the Power button to turn the toaster on. Allow the toaster to warm up until **USE** appears in the display
2. Insert product into the unit using the feeder.
3. Finished product drops onto the heated landing zone.

Light/Dark Adjustments

The light/dark value can be adjusted when the unit is displaying "USE". To adjust the light/dark value, press the **LIGHTER** or **DARKER** button. The display will change to show the current light/dark value.

NOTE: The default light/dark value is d0.

Press the **LIGHTER** or **DARKER** buttons to change the light/dark value. The adjustment range is L1-L9 and d0-d9. L9 is the lightest, d0 is the middle, and d9 is the darkest setting.

To save the light/dark value, wait 5 seconds until the screen displays "USE".

NOTE: Adjusting the light/dark value does NOT change the temperature. It changes the speed of the conveyors. The light/dark value will reset to the default value of d0 when the unit is turned off.

USER MODE

User Mode allows an operator to view the toaster settings but does not permit any adjustments.

1. Press and hold the **PROGRAM** button for 5 seconds. After 5 seconds, the display will show the actual temperature of the top Platen.
2. Press the **LIGHTER** button to toggle between the Setpoint and actual temperature of the top Platen Heater.
3. Press the **PROGRAM** button for 5 seconds. After 5 seconds, the display will show the actual temperature of the bottom Platen.
4. Press the **LIGHTER** button to toggle between the Setpoint and actual temperature of the bottom Platen Heater.
5. Press the **PROGRAM** button to proceed to the Motor Menu. The display shows actual speed of the motor.
6. Press the **LIGHTER** button to toggle between the Setpoint and actual speed of the Motor.

NOTE: The unit will exit User Mode after 5 seconds of keypad inactivity.

MANAGER MODE

Manager Mode allows an operator to view and adjust the following settings:

- Heater Temperature (front/rear)
- Motor Speed
- Temperature Units (Celsius or Fahrenheit)

Manager Mode also allows an operator to view (but not adjust) the Ambient Temperature of the Control Compartment.

1. Press and release the Power button to turn the toaster off.
2. Press and release the Power button while holding the **PROGRAM** button. Continue holding the button until "ENA" appears on the display (after approximately 10 seconds).
3. Release the **PROGRAM** button. The display shows the Heater Setpoint Temperature.
4. To adjust the Heater Setpoint Temperature, press the **LIGHTER** or **DARKER** buttons to reach the desired temperature.

NOTE: The supplied temperature setting for the Platen is 580 °F (304 °C). It may be set from 500 °F (260 °C) to 600 F (316 °C)

5. Press the **PROGRAM** button to program the motor speed.
6. Adjust the Motor Speed Setpoint by pressing the **LIGHTER** or **DARKER** buttons to change the motor speed.

NOTE: The Motor Speed is adjustable from 10-100. The supplied setting for Mfg. No. 9210970 is 98. The supplied setting for Mfg. No. 9210971 is 54.

7. Press the **PROGRAM** button to proceed to the Temperature Units.
8. To change the Temperatures units from Fahrenheit or Celsius, press the **LIGHTER** or **DARKER** buttons.
9. Press and hold the **PROGRAM** button to save any changes.

NOTE: The unit exits Manager Mode after 30 seconds of keypad inactivity.

SAFETY FEATURES

Hi-Limit Control

A Hi-Limit Control turns off electrical power to the heaters and control circuits and displays HL if the unit overheats. To reset the control:

1. Let the unit cool for 15 minutes.
2. Locate the Hi-Limit Controls on the rear of the unit. Remove the black protective cap.
3. Press and release the button. Reinstall the protective cap.

NOTE: If the Hi-Limit Control requires continuous resetting, contact your Authorized Service Agency.

Purging product from Toaster

If product gets stuck in the toaster, press and hold both the **UP** and **DOWN** arrow buttons to increase the belt speed until the product is purged from the toaster.

Fault Messages

The unit displays fault messages when there is a problem with the unit.

- **"Hi"** flashes if the Platen Heater temperature is 30 °F more than the Setpoint or if the Platen Thermocouple is disconnected or open.
- **"CHEC"** flashes when the control compartment ambient temperature is more than 150 °F (66 °C). All heaters shut off. The unit will not restart until the control compartment ambient temperature falls below 140 °F (60 °C).
- **"PO"** flashes if the incoming power drops below 190 volts. The toaster shuts down.
- **"StoP"** flashes when the motor has stopped for seven continuous seconds.
- **"SpEd"** flashes when the motor speed drops 25% below the Setpoint for 30 continuous seconds.
- **"HL"** The Hi-Limit has tripped and needs to be reset.

Error Codes

If any of the following Error Codes appear, press and release the Power button to turn the toaster off. Allow the unit to cool. Then press and release the Power button to turn the toaster on. If the error repeats, contact your Authorized Service Agency for assistance.

NOTE: ERR #1, 2, 3, 5, 6, 7, and 30 to 51: Internal Error. Cycle the power. If error persists, replace the board.

Error	Description
ERR 8	Motor running when it should be off.
ERR 10	High Internal Temperature.
ERR 11	Shorted Thermocouple.
ERR 12	Open Thermocouple.
ERR 13	Slow warm up.
ERR 14	Shorted Solid State Relay (SSR).

DAILY CLEANING

1. Press and release the Power button to turn the toaster off. The toaster enters a 45 minute cool-down mode and automatically shuts down when complete.

NOTE: Be sure to perform cleaning steps during cool-down mode.

2. Put on neoprene gloves and remove the feeder, top cover, and chute.
3. Clean the outside surfaces of the toaster with clean sanitizer soaked towel. Allow to air dry.
4. Wipe the feeder, top cover, and chute with a clean, sanitizer soaked towel. Allow to air dry.

NOTE: The conveyors continue to turn during the cool-down period.

5. Inspect the Belts. Replace all of the belts if any of them are torn, folded, discolored, missing snaps, or damaged in any way.

NOTE: Replace all Belts if any of the Belts are discolored, torn, or if any of the Belt Snaps are damaged.

6. If the Belts are all in good condition, spray a clean, sanitized towel with an approved sanitizer. Press and hold both arrow buttons for 5 seconds. PUR appears on the display with a blinking cursor. This locks the belt speed in Purge mode for 5 minutes to assist in cleaning. Wipe the top belts clean from the TOP only. Do NOT insert your hands between the belts. Wipe the bottom belt clean from below the belt. Allow to air dry.
7. Press any button to exit Purge mode.
8. Wipe the top cover clean with a clean sanitizer soaked towel. Allow to air dry.
9. Reinstall the top cover, feeder, and chute.
10. Turn the toaster on and test the unit before returning it to operation.

NOTE: These cleaning steps may need to be repeated to remove heavy carbon buildup.

NOTE: Be sure to clean and sanitize the Belts completely. Failure to properly clean the Belts will shorten the life of the Belts and result in poor toaster performance.

NOTE: Replace all Belts if any of the Belts are discolored, torn, or if any of the Belt Snaps are damaged. To obtain new Belts, contact the factory at 1-877-392-7854 (North America only) or 630-784-1000.

NOTE: Belts should be removed ONLY during Belt replacement or when required in a service situation.

IMPORTANT

DO NOT INSERT HANDS BETWEEN THE BELTS. USE CARE WHEN CLEANING THE BELTS AS THEY ARE MOVING. PERSONAL INJURY MAY RESULT!

REPLACING BELTS

Over time, the Belts begin to show signs of wear. This wear appears in the form of tears or discoloration of the belt, at which point all belts should be replaced.

NOTE: Belts should be removed ONLY during Belt Replacement or when required in a service situation. For proper operation, replace all belts at the same time.

Removing Belts

1. Press and release the Power button to turn the toaster off. The toaster enters a cool-down mode and will automatically shut down when complete.
2. Unplug the power cord once the cool-down period is complete.
3. Put on neoprene gloves. Remove the feeder.
4. Remove the Top Cover and set aside.
5. Open the Side Door.
6. Unlock the latch and open the left side panel.
7. To lock out the Top Conveyor Roller, face the front of the toaster. Use both hands and push in on the Front Conveyor Roller and up. This removes tension and locks the roller in place.

8. To lock out the Bottom Roller, face the front of the toaster. Use both hands and push in on the Bottom Conveyor Roller and push down. This removes tension and locks the roller in place.
9. Push the front belt frame lock towards the rear of the unit to unlock.
10. Pull the rear Belt Frame Lock out to disengage.
11. Using a utility knife, cut the existing Top Belts and remove from the toaster. Discard the old Belts.
12. Using a utility knife, cut the Lower Belt and remove from the toaster. Discard the old Belt.
13. With belts removed, wipe the front and rear roller rollers and the top and bottom heater cover plates with a clean sanitized towel to remove any debris.

NOTE: Any debris stuck on the roller/cover plates can damage the belts

Installing Belts

NOTE: To obtain new Belts, contact the factory at 1-877-392-7854 (North America only) or 630-784-1000.

1. Follow the steps for Removing Belts.
2. Wipe both sides of the new Belts with a clean, sanitized towel sprayed with an approved sanitizer and allow to air dry.
3. Slide the new bottom belt gently over the bottom front and rear rollers.

NOTE: Make sure the belt lines up properly on the rollers. The snaps on the belts should face the inside of the top front roller.

4. Slide the Heel/Texas Toaster belt over the top front and rear rollers. Repeat this step for the crown belt.

NOTE: Make sure the belt lines up properly on the rollers. The snaps on the belts should face the inside of the top rear roller. Belts must be installed so the exposed diagonal seam of the belt is away from the direction of belt travel.

5. Return the Top and Bottom Belt Rollers to full tension by sliding them back into place.

6. Slowly close the rear Belt Frame Lock so the Front and Rear Belt Rollers lock into place.
7. Re-engage the front Belt Frame Lock by lifting up and then locking it in place on the Front Conveyor Assembly.

NOTE: Inform the Store Manager after any Belt Replacement so new Belts can be ordered. To obtain new Belts, contact the factory at 1-877-392-7854 (North America only) or 630-784-1000.

8. Close and latch the Side Panel.
9. Re-install the Top Cover and Bun Feeder Assembly.
10. Plug in the toaster and test the unit before returning to service.

CLEANING THE TOP COOLING FAN AND ELECTRICAL HOUSING (ANNUALLY)

Follow these steps to clean the top fan.

11. Press and release the Power button to turn the toaster off. The toaster enters a cool-down mode and will automatically shut down when complete.
12. Unplug the power cord.
13. Facing the front of the toaster, move to the left Side Panel. Remove the left Side Panel and set aside. Do not lose the screws.
14. Use a plastic brush or similar tool to brush all 5 fan blades from above and below. Be sure to remove all debris.
15. Carefully clean any debris from the inside floor of the control compartment and from all electrical connections. Be sure to remove any grease, lint, or debris from these areas.
16. Reattach the left Side Panel.

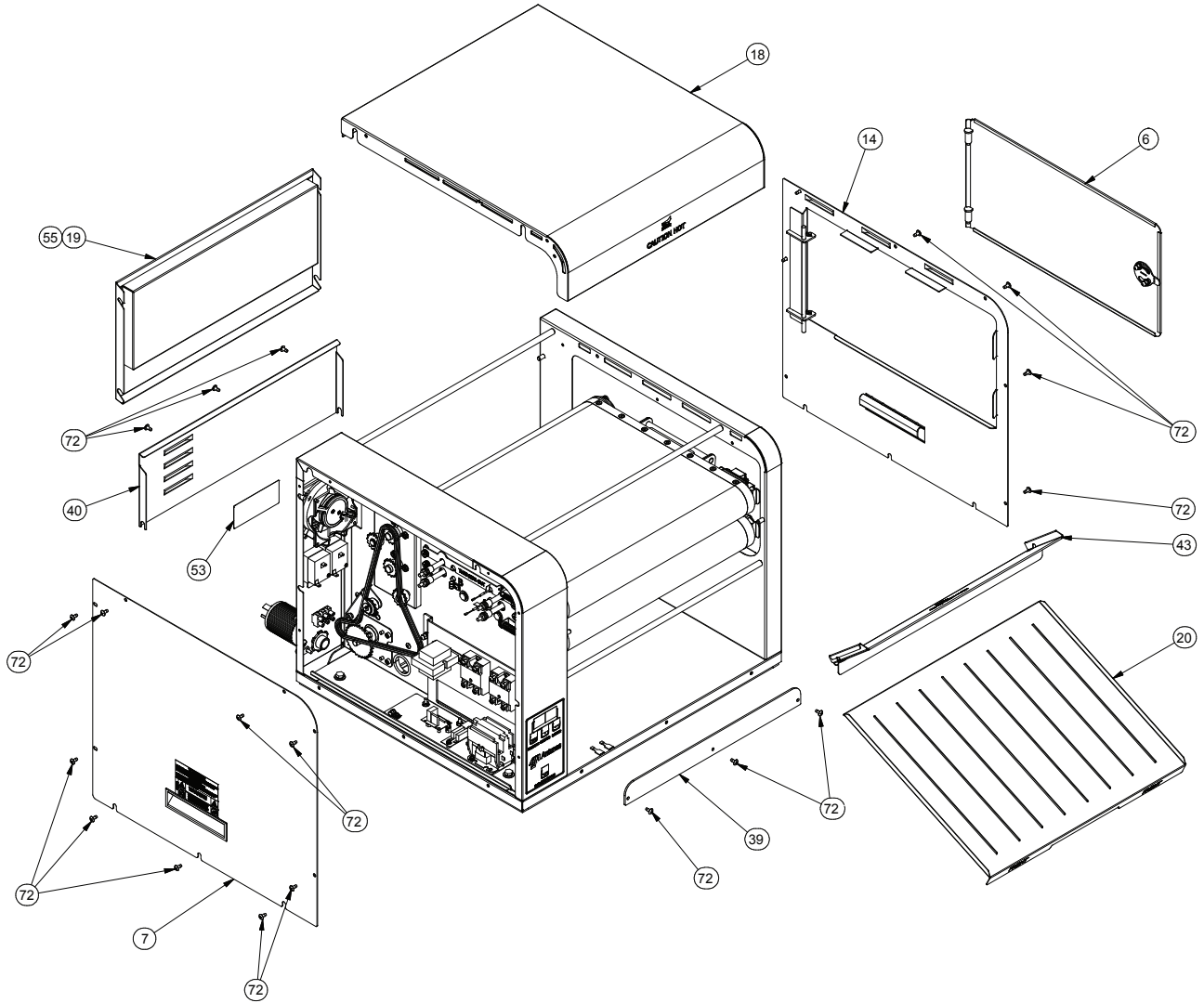
TROUBLESHOOTING

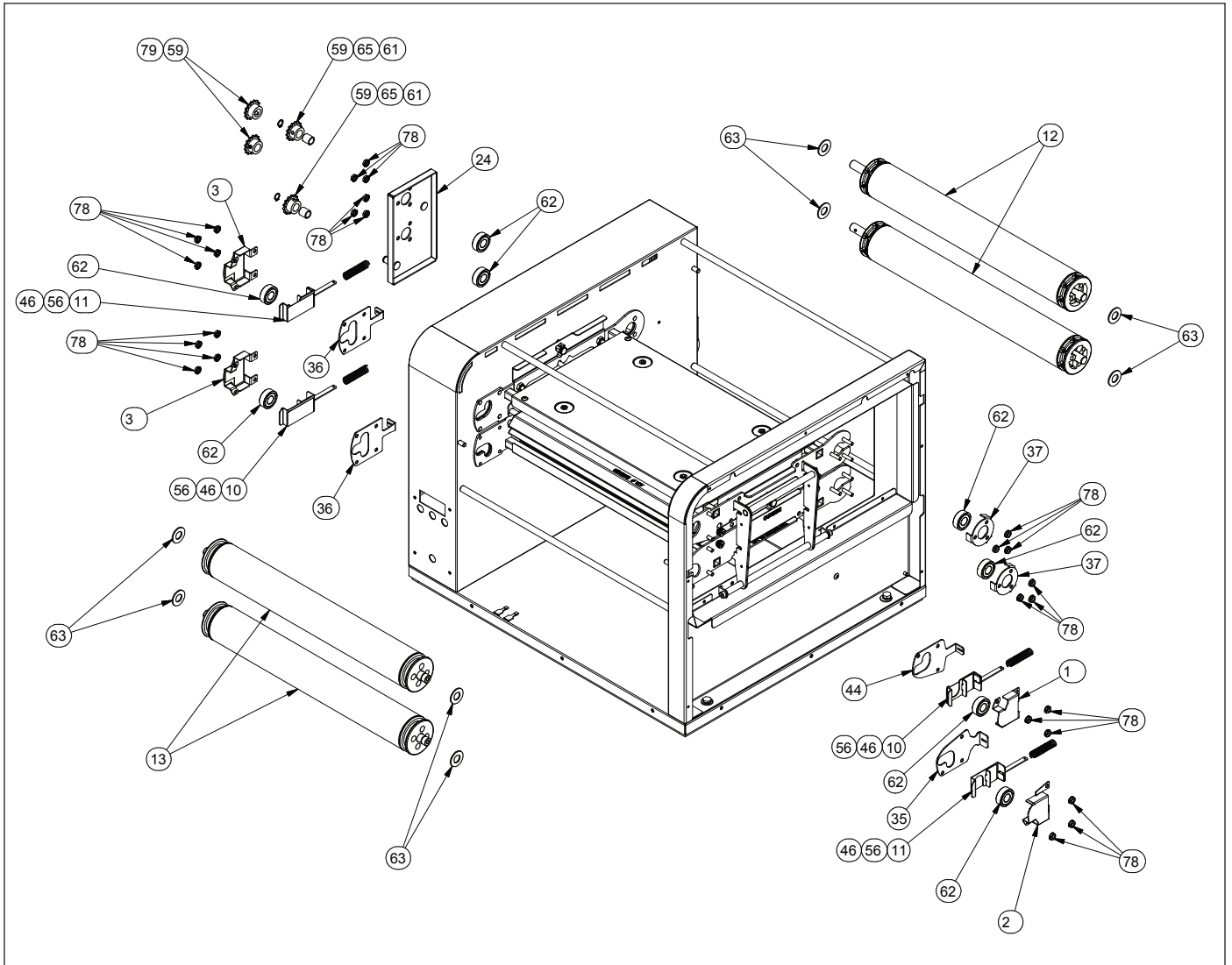
Problem	Possible Cause	Corrective Action
Control Display flashes PLt continuously. Product not toasting properly.	Platen temperature is below 545 °F (285 °C).	Allow the unit to warm up for 30 minutes and then recheck. If the Control Display still flashes PLt , contact your maintenance person or Authorized Service Agency for service.
	Failed Platen Thermocouple.	Contact your maintenance person or Authorized Service Agency for service.
	Failed Control Board	
Control Display flashes Er 10 continuously.	Control Compartment ambient temperature is above 150 °F (66 °C)	Verify side vents on toaster are unblocked and not near other heating appliances. If problem persists, contact your maintenance person or Authorized Service Agency for service.
	Failed Cooling Fan.	
	Failed Control Board	
Control Display Flashes SSr continuously. Product Burns.	Failed Front Platen Solid State Relay.	Contact your maintenance person or Authorized Service Agency for service.
	Failed Control Board.	
	Failed Front Platen Thermocouple.	
Control Display flashes Er 12 continuously. Product not toasting properly.	Loose Platen Thermocouple connection on Control Board or the Platen Thermocouple is open.	Re-secure the Platen Thermocouple to the Control Board. If the Control Display still reads Er 11 , check the Thermocouple for continuity. Contact your maintenance person or Authorized Service Agency for service.
	Failed Control Board.	
Control Display flashes Er 11 continuously. Product not toasting properly.	Shorted Platen Thermocouple to ground.	Disconnect and re-secure the Platen Thermocouple connection to the Control Board. If the Control Display still reads Er 10 , check the Thermocouple for continuity. Contact your maintenance person or Authorized Service Agency for service.
	Failed Control Board	
Control Display flashes StoP .	Mechanical bind in one or both conveyors.	Enter "user mode" to check the motor speed. Check both conveyors for mechanical binds. Test the motor. Replace necessary parts. Contact your maintenance person or Authorized Service Agency for service.
	Worn or damaged Ball Bearings.	
	Drive chain or sprockets damaged.	
	Failed Motor.	
	Failed Control Board.	
Control Display flashes SpEd .	Mechanical bind in one or both conveyors.	Enter "user mode" to check motor speed. Check both conveyors for mechanical binds. Replace necessary parts. Contact your maintenance person or Authorized Service Agency for service.
	Worn or damaged Ball Bearings.	
	Conveyor chains loose or damaged.	
	Drive chain or sprockets damaged.	
Crowns and/or Heels must be forced into the toaster. Product sticking and burning.	Belts are dirty, worn, or damaged (replace every 2-4 months).	Clean or replace Belts as described in the Maintenance section of this manual.
	Product does not meet specifications.	Contact your product supplier.
	One of the Conveyor shafts is stuck in the lower lock position.	Inspect positions of the shafts as described in the Maintenance section of this manual.
	Either both Upper/Lower Conveyor locks are not properly locked in place.	Inspect the proper position of the locks as described in the Maintenance section of this manual.
	Product does not meet specifications.	Contact your product supplier.
	Motor settings are incorrect.	Verify that the motor setting is set to 4000 as described in the Programming section of this Manual.
Side door will not close.	Either both Upper/Lower Conveyor Locks are not properly locked in place.	Inspect the proper position of the locks as described in the Maintenance section of this manual.
	The lock on the Side Door is in the locked position when trying to close the door.	Turn the lock to the unlocked position before closing the door.
Fan is making an unusual sound.	Failed Cooling Fan.	Verify vents on toaster are unblocked and not near other heating appliances. Clean fans as described in the Maintenance section of this manual. If problem persists, contact your maintenance person or Authorized Service Agency for service.
	Cooling Fan is dirty and needs to be cleaned.	
Control Display flashes HL continuously. Product is not toasting properly.	Hi-Limit Control is tripped.	Allow the unit to cool and reset the Hi-Limit Control. If it trips again, contact your maintenance person or Authorized Service Agency for service.

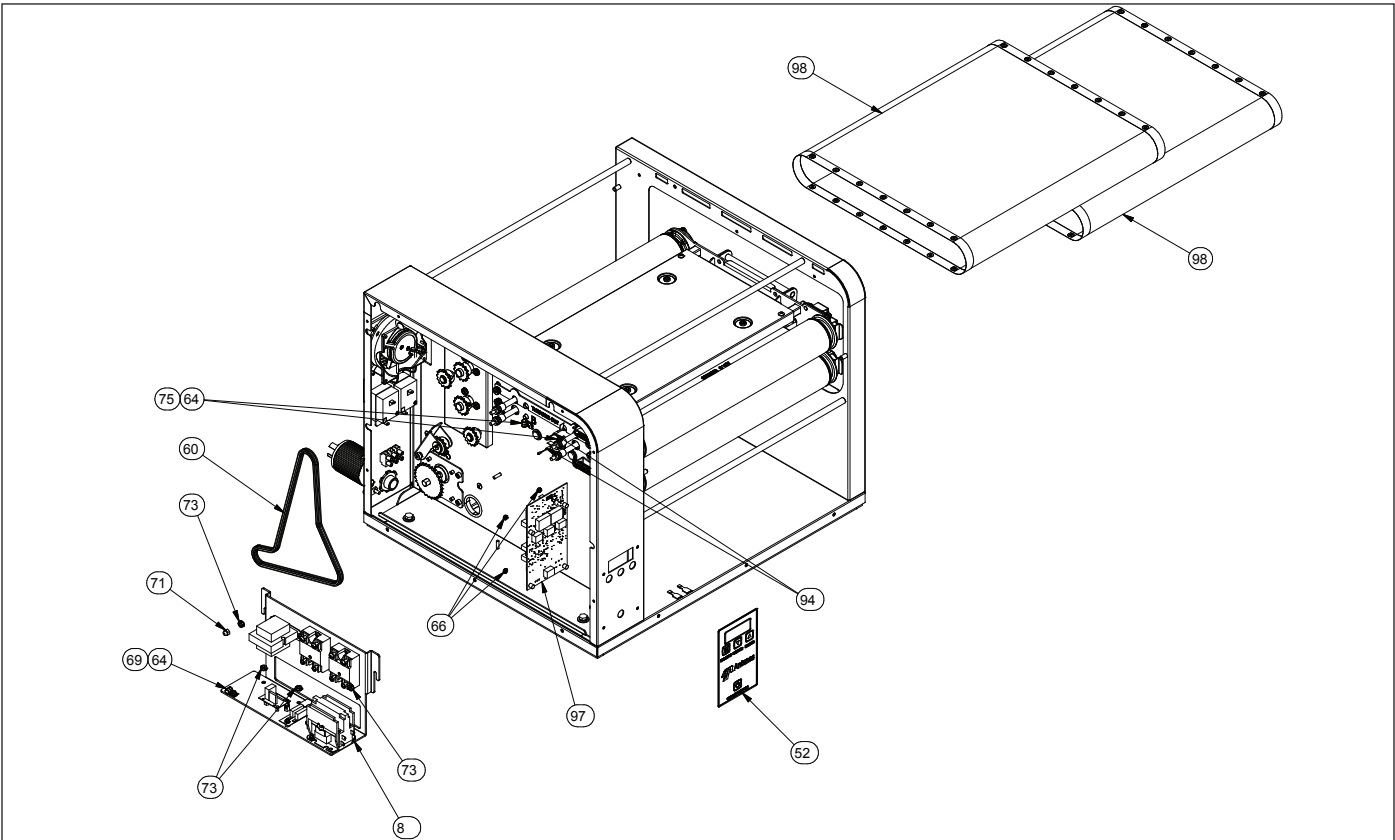
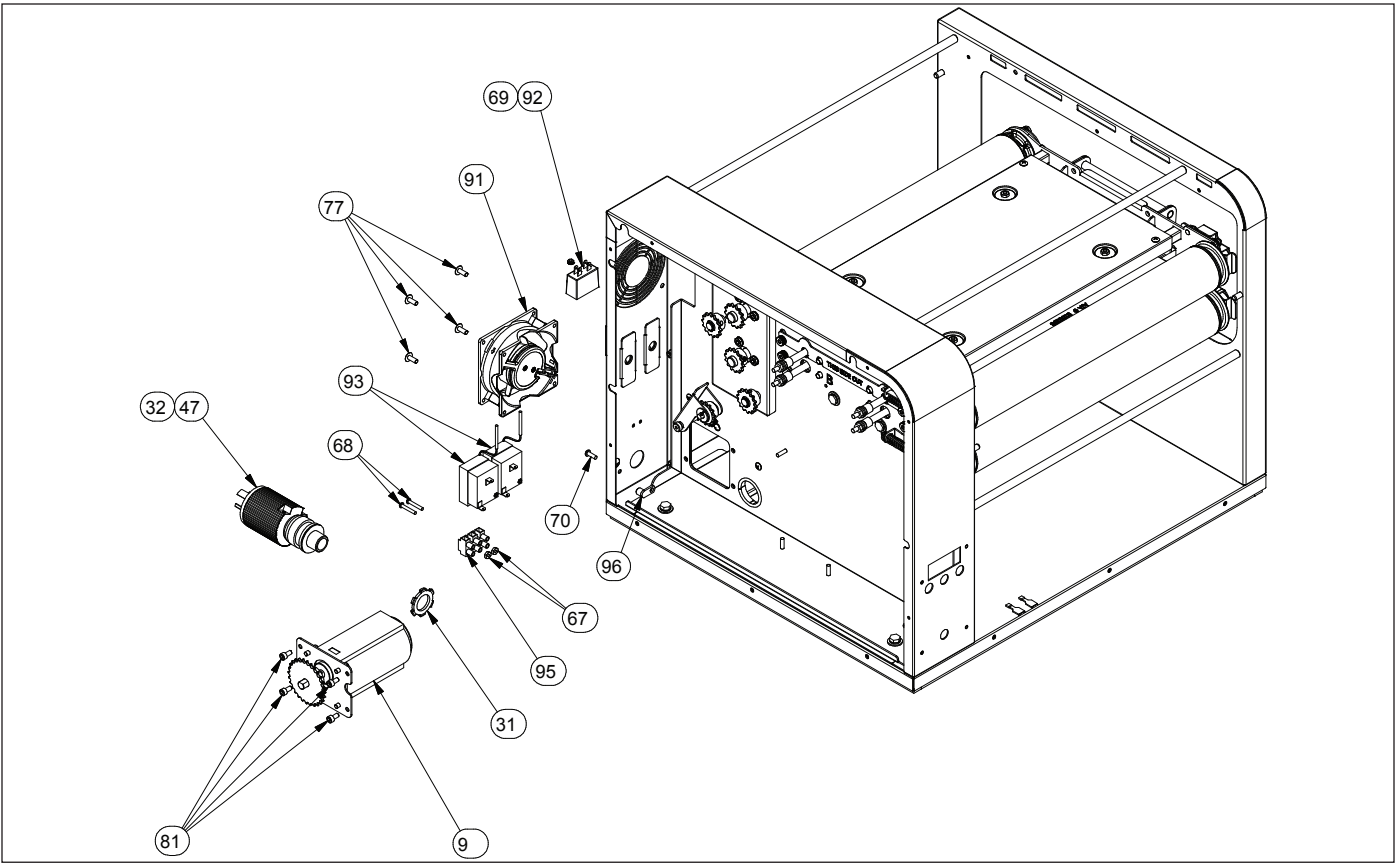
Problem	Possible Cause	Corrective Action
Control Display is blank.	Power Cord is not plugged in.	Plug the Power Cord into the appropriate outlet. Turn the toaster on. If the Control Display is still blank, contact your maintenance person or Authorized Service Agency for service.
	Circuit Breakers turned off or tripped. Damaged electrical outlet, plug, or Power Cord. Power Switch damaged.	Reset Circuit Breakers. If they trip again, check the Power Cord, Plug, and outlet for damage. Contact your maintenance person, Authorized Service Agency, and Electrician for service.
	Faulty Transformer.	Replace Transformer.
Conveyors not turning.	Belt is damaged.	Replace Belts
	Motor Drive Chain is detached from sprockets.	Reinstall the Drive Chain.
	Failed Drive Motor.	Contact your maintenance person or Authorized Service Agency for service.
Belts are ripped or torn.	Rollers or Heater Cover Plates are dirty and need to be cleaned.	Clean Rollers and Heater Cover Plates as outlined in the Maintenance section of this manual.
	Belts are not installed properly.	Install Belts correctly as outlined in the Maintenance section of this manual.
	Roller(s) in the incorrect locked position during operation.	Unlock Rollers to operational position.
	Front Conveyor Lock is disengaged.	Engage and lock the Front Conveyor Lock.

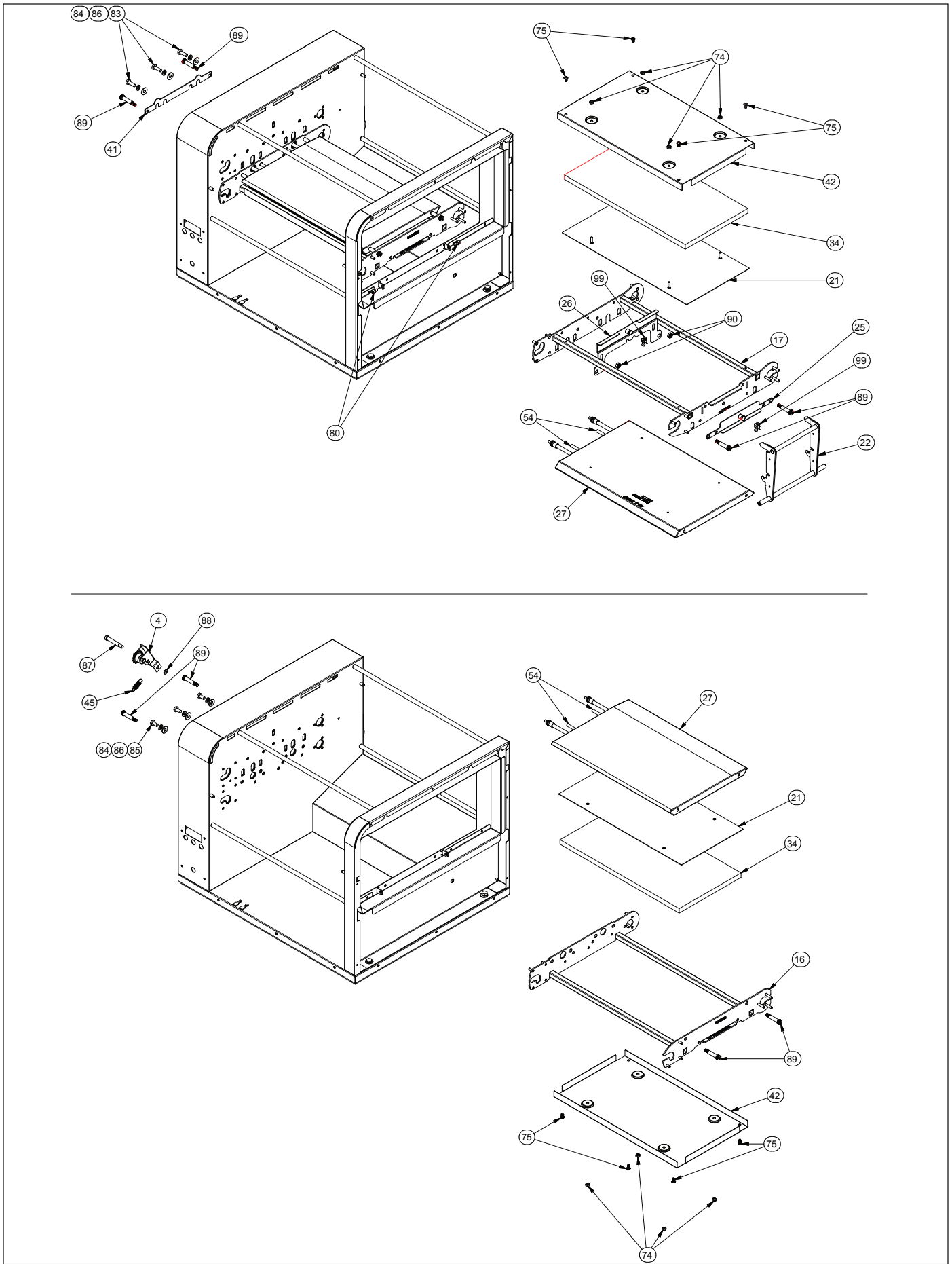
REPLACEMENT PARTS

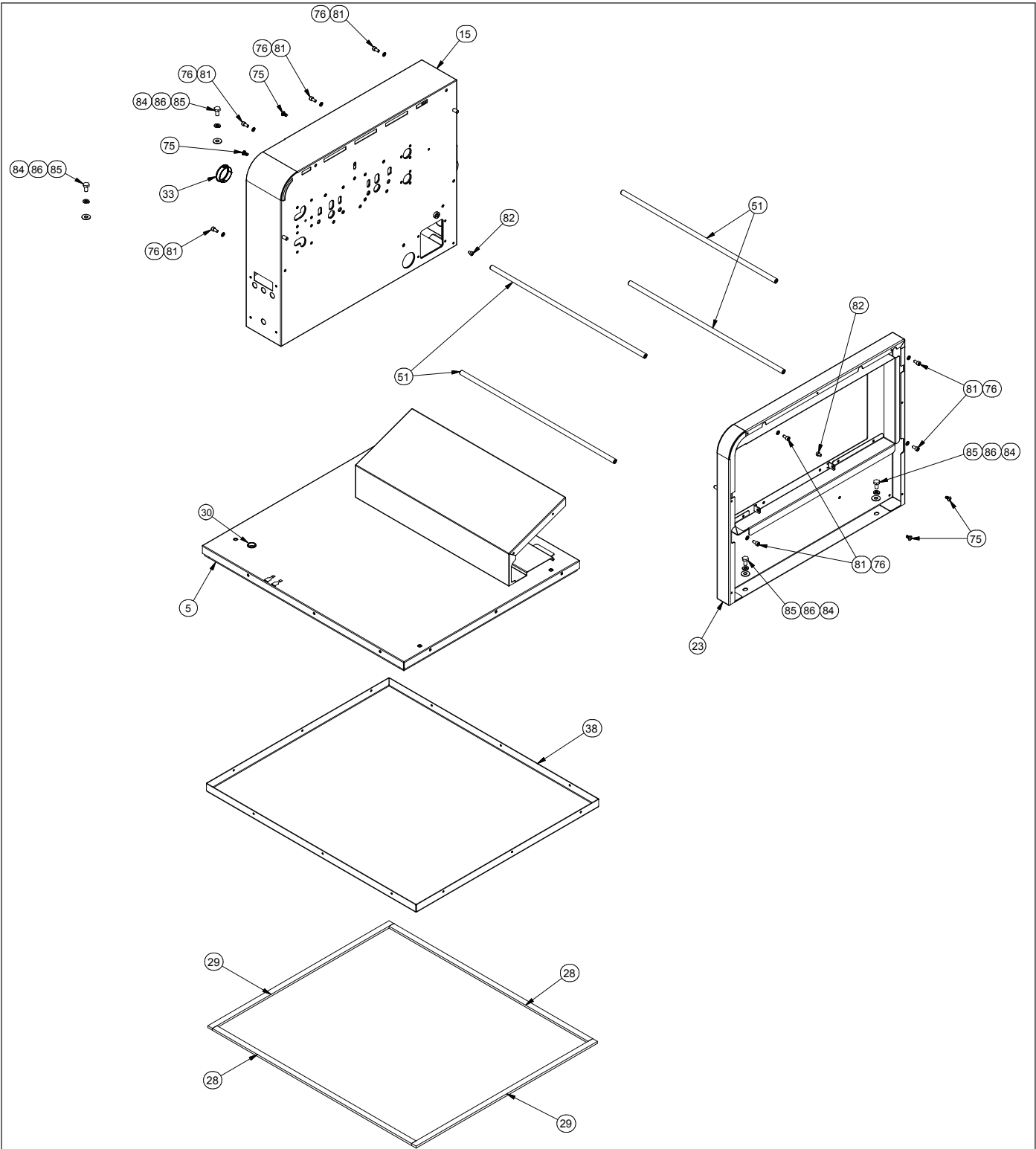
ITEM	PART NO.	DESCRIPTION	QTY	ITEM	PART NO.	DESCRIPTION	QTY
1	0013093	Brkt Assy Top	1	57	2140101	Adhesive/ Sealant - Rtv	1
2	0013094	Brkt Assy Bottom	1	58	2150172	Bearing, Shaft -1/4"	2
3	0013095	Bearing Brkt Assy	2	59	2150179	Sprocket, 25B14 1/2" Bore	4
4	0013111	Assy, Drive Chain Tensioner	1	60	2150187	Chain, Drive	1
5	0013338	Base Assembly	1	61	2150258	Bearing, Idler	2
6	0013346	Door Assembly	1	62	2150384	Bearing Assy, Hi-Temp 1 1/8" Od X 1/2" Id	8
7	0013347	Housing Door Assy	1	63	2150444	Thrust Bearing .500" Id	8
8	0013354	Electronics Assembly	1	64	2180514	Clamp, Cable - Polypropylene	3
9	0013509	Drive Motor Assy	1	65	300P124*	Ring, Retaining 3/8"	1
10	0021724	Weldment, Bearing Brkt & Spring Guide - Rh	2	66	304P105*	Nut, Hex 'Keps' #4-40	4
11	0021725	Weldment, Bearing Brkt & Spring Guide - Lh	2	67	306P101*	Nut, Hex #6-32	2
12	0021838	Weldment, Drive Roller Main Platen	2	68	306P123*	Screw, Mach #6-32 X 7/8"	1
13	0021839	Weldment, Idler Main Platen	2	69	306P130*	Nut, Hex Keps #6-32 (Small Pattern)	1
14	0021897	End Housing Panel Wldmt	1	70	308P124*	Screw, Mach One-Way #8-32	1
15	0022313	Control Housing Weldment	1	71	308P145*	Nut, Hex Acorn #08-32 Low Crown	1
16	0022314	Main Platen Frame Wldmt	1	72	308P157*	Screw, Tap 8-32 X 3/8" Lg	28
17	0022324	Top Frame Weldment	1	73	308P199*	Nut, Hex 'Keps' #8-32	1
18	0022326	Cover Weldment	1	74	308P202*	Nut, Hex Tri-Lock #8-32	1
19	0022332	Back Cover Weldment	1	75	308P203*	Screw, Tap 8-32 X 3/8" W/Int. Tooth Washer	1
20	0022333	Bun Chute	1	76	310P102*	Washer, Int. Tooth-Lock, #10	1
21	0022339	Insulation Plate Weldment	2	77	310P110*	Screw, Mach. #10-32 X 1/2"	1
22	0022759	Weldment, Frame Locking Bracket	1	78	310P146*	Nut, Hex 'Keps' #10-32	1
23	0022760	Weldment, End Housing	1	79	310P187*	Screw Set, #10-32 X 3/8 Hex Socket-Cone Point	1
24	0022773	Weldment, Idler Bearing	1	80	310P196*	Screw, Shoulder 10-32 Ss	1
25	0022796	Assembly, Platen Lock Rh	1	81	310P199*	Scr, #10-32 X 3/8 Lg Socket Hd Cap	1
26	0022797	Assembly, Platen Lock Lh	1	82	310P204*	Fillister Head Phillips Screw # 10-32 X .25	1
27	0100293	Platen, Main 208V, 2300W	2	83	325P103*	Screw, Hexcap 1/4-20 X 3/4"	1
28	0200384	Gasket, Base - 21.64" Lg	2	84	325P104*	Washer, Flat 1/4" S/S	1
29	0200385	Gasket, Base - 19.7" Lg	2	85	325P109*	Screw, Hexcap 1/4-20 X 1/2"	1
30	0400119	Bushing, Shorty 5/8"	1	86	325P154*	Washer, Ø1/4" Helical Spring Lock	1
31	0400138	Lock-Nut, Conduit-1/2" Npt	1	87	325P177*	Screw, Shoulder 5/16 Sd X 1-1/2 Sl X1/4-20	1
32	0400347	Strain Relief - Cord Connector	1	88	325P180*	Washer, Flat 0.468 X 0.255 l d X 0.029 Thk	1
33	0400432	Bushing, Open/Closed	1	89	325P217*	Bolt, Shoulder .313 Sd X 1.125 Sl	1
34	0400480	Insulation, Platen	2	90	325P220*	1/4"-20 Nylon Insert Locknut	1
35	0506543	Plate, Tensioner Lh	1	91	4000211	Fan, Axial 230 Volt	1
36	0506566	Plate, Tensioner	2	92	4010221	Cap-Mp, Motor Run	1
37	0506959	Retainer, Bearing	2	93	4030332	Thermostat, Hi-Limit	2
38	0507551	Base Bottom Side	1	94	4050214	Thermocouple Type "K" ---(Open End)	2
39	0507552	Bun Stop	1	95	4060355	Terminal Block, 3-Pole	1
40	0507554	Electrical Cover	1	96	4060374	Ground Lug	1
41	0507581	Plate, Air Cover	1	97	4070280	Control Board	1
42	0507585	Plate, Insulation	2	98	7000929	Main Teflon Belt	2
43	0508065	Chute, Front	1	99	3000129	Clip, Steel	2
44	0508220	Plate, Tensioner Rh	1	* Item available in packages of ten (10).			
45	0600155	Spring, Compression Setting	1				
46	0600158	Spring, Roller Tension	4				
47	0700577	Power Cord, Plug L6-30P, Twist Lock	1				
48	0701001	Wire Harness, Tortilla Toaster Control Board	1				
49	0701002	Wire Harness, Tortilla Toaster Line Voltage	1				
50	0701003	Wire Harness, Tortilla Toaster Heater	1				
51	0800438	Rod, Belt Cover	4				
52	1001658	Label, Control	1				
53	1031306	Spec Label # 9210970	1				
54	2000259	Tube, O.d. 1/4" X 1.625" Lg	4				
55	2100212	Handle, Pocket Pull, Snap-In	2				
56	2100334	Thrust Strip, Teflon	4				



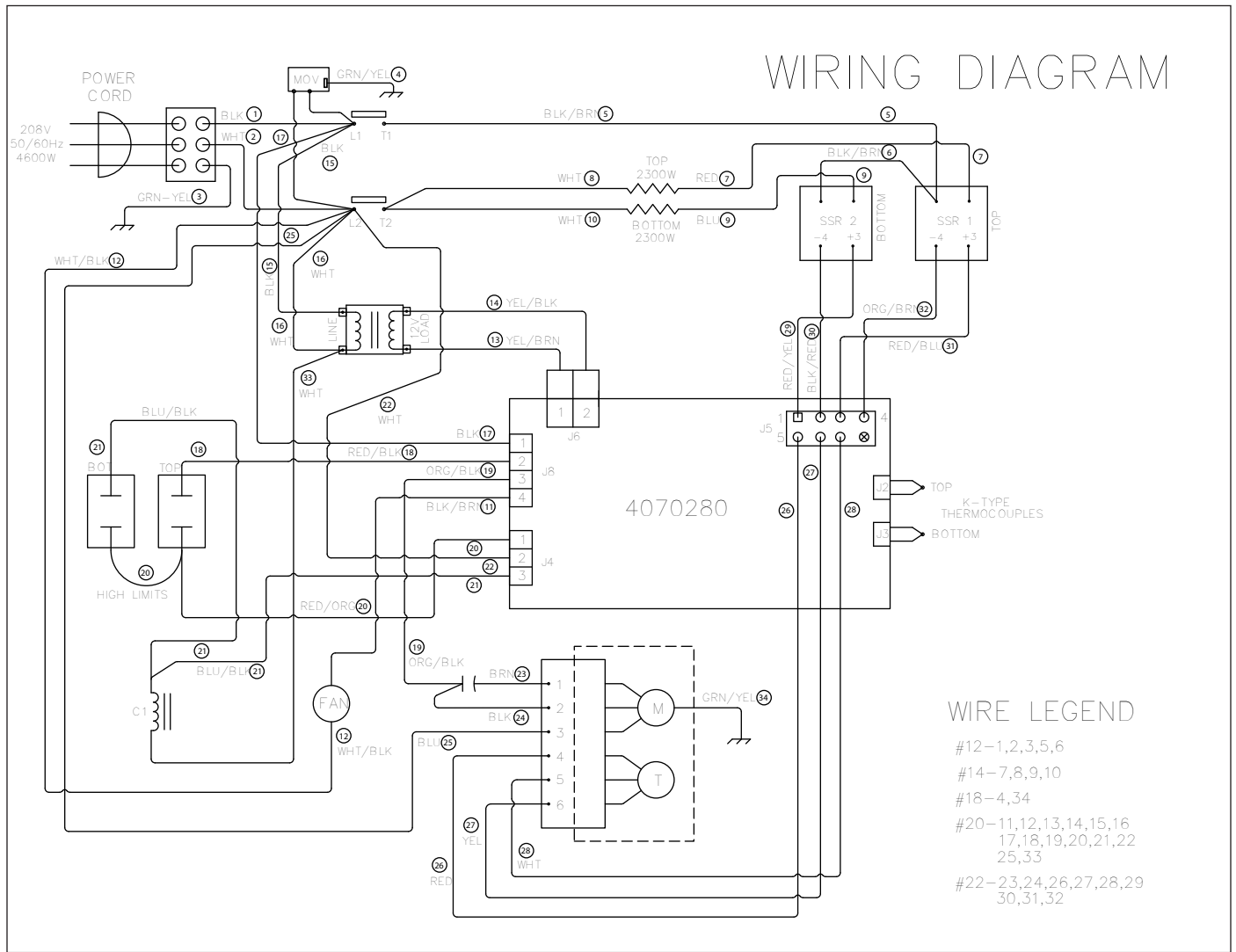








WIRING DIAGRAM



LIMITED WARRANTY

Equipment manufactured by Roundup Food Equipment Division of A.J. Antunes & Co. has been constructed of the finest materials available and manufactured to high quality standards. These units are warranted to be free from electrical and mechanical defects for a period of one (1) year from date of purchase under normal use and service, and when installed in accordance with manufacturer's recommendations. To insure continued operation of the units, follow the maintenance procedures outlined in the Owner's Manual. During the first 12 months, electro-mechanical parts, non-overtime labor, and travel expenses up to 2 hours (100 miles/160 km), round trip from the nearest Authorized Service Center are covered.

1. This warranty does not cover cost of installation, defects caused by improper storage or handling prior to placing of the Equipment. This warranty does not cover overtime charges or work done by unauthorized service agencies or personnel. This warranty does not cover normal maintenance, calibration, or regular adjustments as specified in operating and maintenance instructions of this manual, and/or labor involved in moving adjacent objects to gain access to the equipment. This warranty does not cover consumable/wear items. This warranty does not cover damage to the Load Cell or Load Cell Assembly due to abuse, misuse, dropping of unit/shock loads or exceeding maximum weight capacity (4 lbs). This warranty does not cover water contamination problems such as foreign material in water lines or inside solenoid valves. It does not cover water pressure problems or failures resulting from improper/incorrect voltage supply. This warranty does not cover Travel Time & Mileage in excess of 2 hours (100 miles/160 km) round trip from the nearest authorized service agency.
2. Roundup reserves the right to make changes in design or add any improvements on any product. The right is always reserved to modify equipment because of factors beyond our control and government regulations. Changes to update equipment do not constitute a warranty charge.
3. If shipment is damaged in transit, the purchaser should make a claim directly upon the carrier. Careful inspection should be made of the shipment as soon as it arrives and visible damage should be noted upon the carrier's receipt. Damage should be reported to the carrier. This damage is not covered under this warranty.
4. Warranty charges do not include freight or foreign, excise, municipal or other sales or use taxes. All such freight and taxes are the responsibility of the purchaser.
5. THIS WARRANTY IS EXCLUSIVE AND IS IN LIEU OF ALL OTHER WARRANTIES, EXPRESSED OR IMPLIED, INCLUDING ANY IMPLIED WARRANTY OR MERCHANTABILITY OR FITNESS FOR A PARTICULAR PURPOSE, EACH OF WHICH IS HEREBY EXPRESSLY DISCLAIMED. THE REMEDIES DESCRIBED ABOVE ARE EXCLUSIVE AND IN NO EVENT SHALL ROUNDUP BE LIABLE FOR SPECIAL CONSEQUENTIAL OR INCIDENTAL DAMAGES FOR THE BREACH OR DELAY IN PERFORMANCE OF THIS WARRANTY.



Corporate Headquarters

Carol Stream, Illinois
Phone: +1 (630) 784-1000
Toll Free: +1 (800) 253-2991
Fax: +1 (630) 784-1650

China Facility

Suzhou, China
Phone: +86-512-6841-3637
Fax: +86-512-6841-3907