



# RPCL2

Parts List  
02-June-2022



*This parts list is current as of the above revision date.  
See <http://www.rheempartslists.net/92-42800-RPCL2.pdf> for the current revision.*

**Heat Pumps - Commercial**

# Table of Contents

Model Explanation .....	Page 3
<b>Parts Numbers</b>	
Panels - Miscellaneous .....	Page 4
Electrical Group .....	Page 5
Fan Group .....	Page 6
Coil Parts .....	Page 7
Compressor Group .....	Page 8
<b>Drawings/Photographs</b>	
Exploded View - Exterior Panels 090 .....	Page 9
Exploded View - 120 .....	Page 10
Interior Components - 090 .....	Page 11
Interior Components - 120 .....	Page 12
Control Box Mounting - 120 .....	Page 13
Base Pan, Base Rails - 120 .....	Page 14
Fan Assembly - 120 .....	Page 15
Service Valves - 120 .....	Page 15
Control Box Assembly - 090 .....	Page 16
Control Box Assembly - 120 .....	Page 16
Notes/Disclaimer .....	Page 17

**MODEL NUMBER EXPLANATION**

<b>R</b>	<b>P</b>	<b>C</b>	<b>L</b>	<b>2</b>	<b>0</b>	<b>9</b>	<b>1</b>	<b>C</b>	<b>A</b>	<b>Z</b>
<b>1</b>	<b>2</b>	<b>3</b>	<b>4</b>	<b>5</b>	<b>6</b>			<b>7</b>	<b>8</b>	<b>9</b>

**1 TRADEBRAND IDENTIFICATION**

**2 TYPE**  
P = Heat Pump

**3 DESIGNATION**  
C = Commercial

**4 DESIGN SERIES**  
L = R410A

**5 COMPRESSOR STAGES**  
1 = 1 Stage  
2 = 2 Stage  
V = Variable Speed

**6 COOLING CAPACITY**  
090 = 7.5 Tons  
120 = 10 Tons

**7 ELECTRICAL DESIGNATION**  
C = 208-230/3/60  
D = 460/3/60

**8 DESIGN VARIATION**  
A = Standard  
B = DOE 2023 Compliant

**9 COMPRESSOR TYPE**  
Z = Scroll Compressor

**SERIAL NUMBER EXPLANATION**

<b>F</b>	<b>0</b>	<b>8</b>	<b>1</b>	<b>9</b>	<b>9</b>	<b>9</b>	<b>9</b>
(1)	(2)		(3)		(4)		

**(1) PLANT CODE**  
F = Ft. Smith

**(2) WEEK OF PRODUCTION**

**(3) YEAR OF PRODUCTION**

**(4) PRODUCTION NUMBER**

**Note: For Compressor Identification Number, see Compressor Code on Rating Plate**

No.	Notes	MODEL COOLING CAPACITY VARIATION	RPCL2 090 CAZ / CBZ	RPCL2 090 DAZ / DBZ
<b>PANELS, MISCELLANEOUS PARTS</b>				
1		Base Pan	AE-58426-83HT	AE-58426-83HT
2		Button Plug (2)	45-22980-07	45-22980-07
3		Louver Panel - Right Side Front	10-105334-02HT	10-105334-02HT
4		Louver Panel - Cabinet Side Rear (2)	10-105334-03HT	10-105334-03HT
5		Louver Panel - Rear	10-105335-03HT	10-105335-03HT
6		Louver Panel - Left Side Front	10-105334-01HT	10-105334-01HT
7		Access Panel - Upper	AE-100617-07HT	AE-100617-07HT
8		Access Panel - Lower	AE-103033-01HT	AE-103033-01HT
9a		Center Cap - Blank	91-105471-02	91-105471-02
9b		Wire Grille	95-104620-05	95-104620-05
10		Control Box	AE-100633-03	AE-100633-03
11a		Top Panel	AE-100618-06HT	AE-100618-06HT
11b		Venturi Ring	68-104464-11	68-104464-11

No.	Notes	MODEL COOLING CAPACITY VARIATION	RPCL2 120 CAZ / CBZ	RPCL2 120 DAZ / DBZ
<b>PANELS, MISCELLANEOUS PARTS</b>				
1		Base Pan	10-90929-04HT	10-90929-04HT
2		Base Rail - End (2)	AE-90925-01	AE-90925-01
3		Base Rail - Side (2)	AE-90925-04	AE-90925-04
4		Base Rail - Middle Support	AE-90925-05	AE-90925-05
5		Connection Panel	AE-90936-04HT	AE-90936-04HT
5a		Bushing - Star	45-18515-01	45-18515-01
6		Louver Panel (4)	10-90944-03HT	10-90944-03HT
7		Control Box Cover	AE-90935-01HT	AE-90935-01HT
8		Access Panel - Front	AE-90937-01HT	AE-90937-01HT
9		Access Panel - Rear	AE-90938-01HT	AE-90938-01HT
10		Center Post - Hemmed (2)	AE-105378-01HT	AE-105378-01HT
11		Corner Post (4)	AE-90930-01HT	AE-90930-01HT
12		Wire Grille (2)	95-104620-04	95-104620-04
13		Venturi Ring (2)	68-104464-07	68-104464-07
14		Control Box	AS-90933-03	AS-90933-03
15		Top Panel	AS-90942-10HT	AS-90942-10HT
16		Control Box Mounting Bracket (Top)	AE-90934-02	AE-90934-02
17		Control Box Mounting Bracket (Bottom)	AE-90934-03HT	AE-90934-03HT
18		Control Box Mounting Bracket (Side) (2)	AE-90934-01	AE-90934-01
		Mounting Bracket - Service Valve	AE-102833-02	AE-102833-02

No.	Notes	MODEL COOLING CAPACITY ELECTRICAL DESIGNATION	RPCL2 090 C	RPCL2 090 D
<b>ELECTRICAL GROUP</b>				
12	Stk	Defrost Control Board	47-102684-14	47-102684-14
12a		Defrost Sensor	47-102710-01	47-102710-01
12b		Ambient Sensor	47-102709-01	47-102709-01
13	Stk	Contactactor	<a href="#">42-102664-19</a>	<a href="#">42-102664-19</a>
14a		Grounding Lug	45-19000-02	45-19000-02
14b	Stk	Terminal Strip	45-23591-01	45-23591-01
15	Stk	Transformer	<a href="#">46-42515-01</a>	<a href="#">46-42515-02</a>
18		Bushing - Nylon Snap (3)	45-17057-06	45-17057-06

No.	Notes	MODEL COOLING CAPACITY ELECTRICAL DESIGNATION	RPCL2 120 C	RPCL2 120 D
<b>ELECTRICAL GROUP</b>				
32	Stk	Defrost Control Board	47-102684-14	47-102684-14
32a		Defrost Sensor	47-102710-02	47-102710-02
32b		Ambient Sensor	47-102709-01	47-102709-01
33	Stk	Contactactor	<a href="#">42-102664-17</a>	<a href="#">42-102664-17</a>
34a	Stk	Terminal Strip	45-23591-01	45-23591-01
34b		Grounding Lug	45-19000-02	45-19000-02
35	Stk	Transformer	<a href="#">46-42515-01</a>	<a href="#">46-42515-02</a>

No.	Notes	MODEL	RPCL2	RPCL2
		COOLING CAPACITY	090	090
		ELECTRICAL DESIGNATION	C	D
<b>FAN GROUP</b>				
37	Stk	Fan Motor	51-105035-10	51-106944-04
39	Stk	Fan Blade	70-102345-20	70-102345-20

No.	Notes	MODEL	RPCL2	RPCL2
		COOLING CAPACITY	120	120
		ELECTRICAL DESIGNATION	C	D
<b>FAN GROUP</b>				
37	Stk	Fan Motor (2)	51-105035-11	51-105035-15
39	Stk	Fan Blade (2)	70-102345-15	70-102345-15

No.	Notes	MODEL COOLING CAPACITY VARIATION	RPCL2 090 CAZ / CBZ	RPCL2 090 DAZ / DBZ
<b>COIL GROUP</b>				
19	Stk	Coil Assembly (does not include TXV)	AS-102887-01	AS-102887-01
20	Stk	TXV	<a href="#">61-102321-10</a>	<a href="#">61-102321-10</a>
20a		Bulb Strap Kit -TXV (Design Variation "A")	64-101357-01	64-101357-01
		Bulb Strap Kit -TXV (Design Variation "B")	64-108465-01	64-108465-01
21	Stk	Service Valve - Liquid Line	61-104025-12	61-104025-12
22	Stk	Service Valve - Suction Line	<a href="#">61-21368-16</a>	<a href="#">61-21368-16</a>
23	Stk	Low Pressure Control	47-101529-07	47-101529-07
24	Stk	High Pressure Control	47-26184-04	47-26184-04
25	Stk	Wiring Harness - Reversing Valve	61-26149-05	61-26149-05
		Filter Drier (Design Variation "A")	83-41719-05	83-41719-05
		Filter Drier (Design Variation "B")	83-104825-05	83-104825-05
26		Bracket - Valve Mounting	AE-56389-02	AE-56389-02
29	Stk	Reversing Valve	61-102498-03	61-102498-03
		Solenoid Coil Kit	<a href="#">61-101713-92</a>	<a href="#">61-101713-92</a>
30		Strainer	83-26020-09	83-26020-09
31		Tube - Liquid (1/2 in. x 2 in. TXV extension)	82-59114-07	82-59114-07
32	Stk	Accumulator	83-104716-02	83-104716-02
33		Distributor Assembly - Distributor and Strainer	83-103135-01	83-103135-01

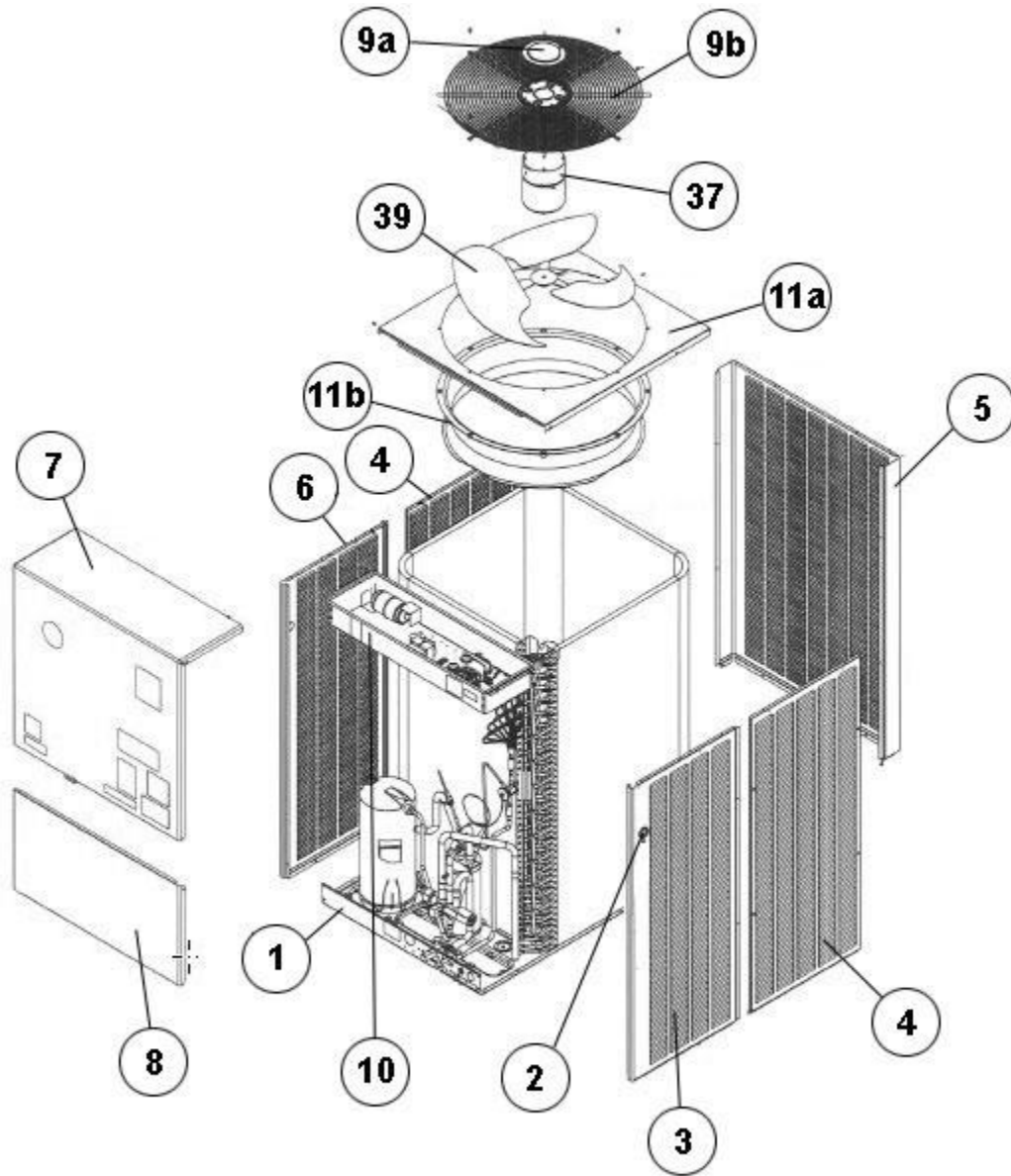
No.	Notes	MODEL COOLING CAPACITY VARIATION	RPCL2 120 CAZ / CBZ	RPCL2 120 DAZ / DBZ
<b>COIL GROUP</b>				
19	Stk	Coil Assembly w/TXV (2)	AS-90901-03	AS-90901-03
20	Stk	TXV Assembly ( Includes Distributor) (2)	61-42662-11	61-42662-11
20a		Bulb Strap Kit -TXV (2) (Design Variation "A")	64-101357-01	64-101357-01
		Bulb Strap Kit -TXV (2) (Design Variation "B")	64-108465-01	64-108465-01
21	Stk	Service Valve - Liquid Line	<a href="#">61-21368-14</a>	<a href="#">61-21368-14</a>
22	Stk	Service Valve - Suction Line	61-102832-02	61-102832-02
		Distributor (5/8 in. x 1/2 in. x 1/2 in.)	83-41634-01	83-41634-01
		Distributor (1-1/8 in. x 7/8 in. x 7/8 in.)	83-17467-12	83-17467-12
23	Stk	Low Pressure Control	<a href="#">47-101529-03</a>	<a href="#">47-101529-03</a>
24	Stk	High Pressure Control	47-26184-04	47-26184-04
25		Switch Mounting Bracket - Low Ambient Control	N/A	N/A
26		Mounting Bracket - Service Valve	AE-102833-02	AE-102833-02
		Filter Drier	83-104825-07	83-104825-07
27	Stk	Low Ambient Control	N/A	N/A
28	Stk	Charge Compensator (2)	<a href="#">83-104499-11</a>	<a href="#">83-104499-11</a>
29	Stk	Reversing Valve	<a href="#">61-102498-08</a>	<a href="#">61-102498-08</a>
	Stk	Solenoid Coil - Reversing Valve	<a href="#">61-101713-92</a>	<a href="#">61-101713-92</a>
	Stk	Wiring Harness - Reversing Valve	61-26149-05	61-26149-05
		Bulkhead Valve (2)	<a href="#">61-22369-04</a>	<a href="#">61-22369-04</a>
		Locknut - Bulkhead Valve (2)	63-22368-01	63-22368-01
		Valve Core - Bulkhead Valve (2)	61-18551-01	61-18551-01
		Bulkhead Valve Cap (2)	83-100635-01	83-100635-01
30	Stk	Accumulator	83-41827-02	83-41827-02

No.	Notes	MODEL COOLING CAPACITY ELECTRICAL DESIGNATION DESIGN VARIATION	RPCL2 090 CAZ A	RPCL2 090 DAZ A
<b>COMPRESSOR GROUP</b>				
		<b>Compressor ID:</b>	<b>9609</b>	<b>9608</b>
42	Stk	Compressor	55-23156-66	55-23156-67
		Compressor Grommet (4)	56-18518-06	56-18518-06
		Compressor Bolt (4)	63-20072-03	63-20072-03
43	Stk	Crankcase Heater	44-17402-10	44-17402-11
	Stk	Compressor Wiring Harness - Low Voltage - Molded Plug "Includes Rectifier"	45-101723-02	45-101723-02
	Stk	Filter Drier	See Coil Group	

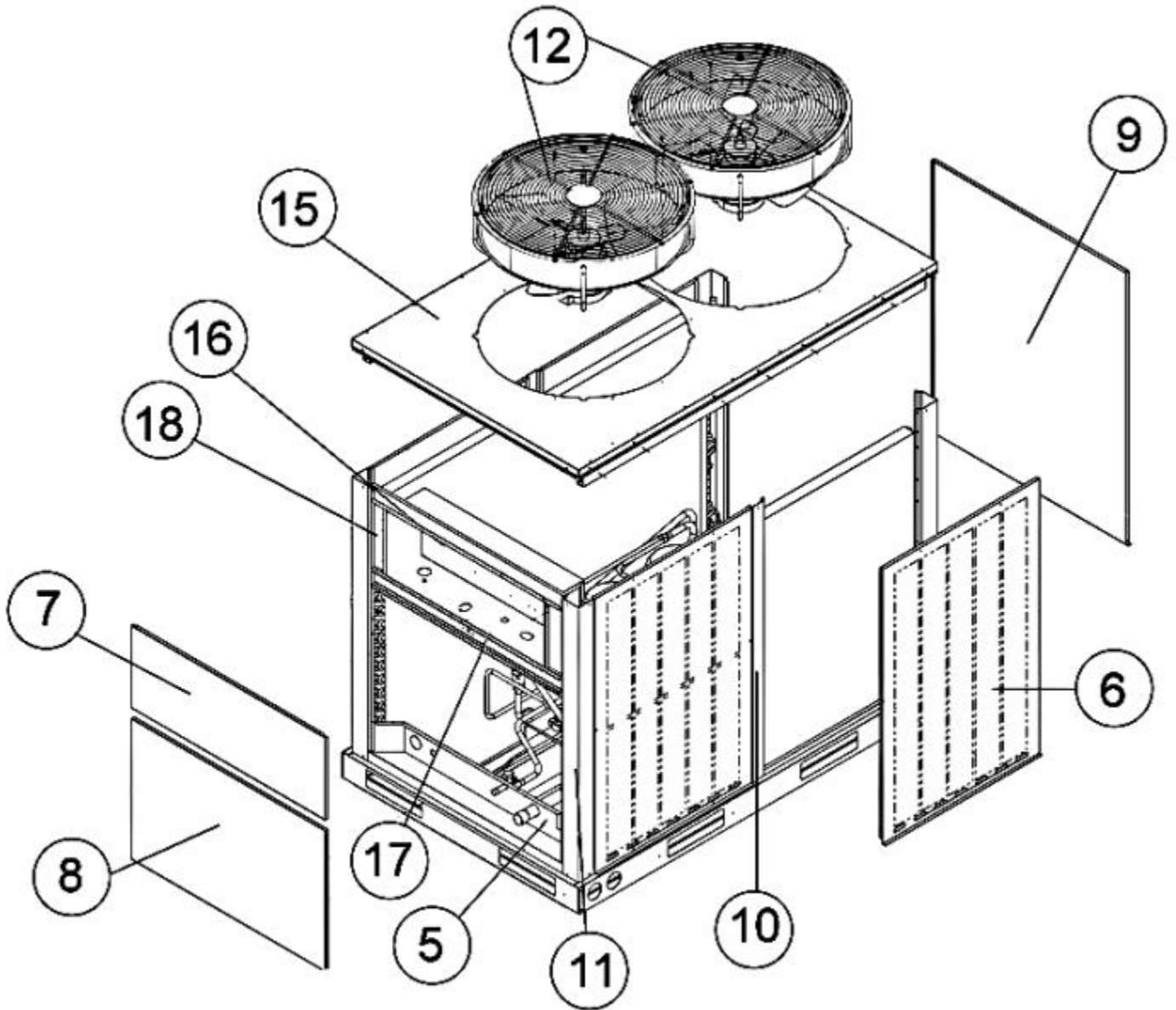
No.	Notes	MODEL COOLING CAPACITY ELECTRICAL DESIGNATION DESIGN VARIATION	RPCL2 090 CAZ B	RPCL2 090 DAZ B
<b>COMPRESSOR GROUP</b>				
		<b>Compressor ID:</b>	<b>9865</b>	<b>9866</b>
42	Stk	Compressor	55-23156-66	55-23156-67
		Compressor Grommet (4)	56-18518-06	56-18518-06
		Compressor Bolt (4)	63-20072-03	63-20072-03
43	Stk	Crankcase Heater	44-17402-10	44-17402-11
	Stk	Compressor Wiring Harness - Low Voltage - Molded Plug "Includes Rectifier"	45-101723-07	45-101723-02
	Stk	Filter Drier	See Coil Group	

No.	Notes	MODEL COOLING CAPACITY ELECTRICAL DESIGNATION DESIGN VARIATION	RPCL2 120 CAZ A	RPCL2 120 DAZ A
<b>COMPRESSOR GROUP</b>				
		<b>Compressor ID:</b>	<b>9613</b>	<b>9616</b>
42	Stk	Compressor	55-23156-56	55-23156-57
		Compressor Grommet (4)	56-18518-06	56-18518-06
		Compressor Bolt (4)	63-20072-03	63-20072-03
43	Stk	Crankcase Heater	44-17402-22	44-17402-23
	Stk	Compressor Wiring Harness - Low Voltage - Molded Plug "Includes Rectifier"	45-101723-07	45-101723-07
	Stk	Filter Drier	See Coil Group	

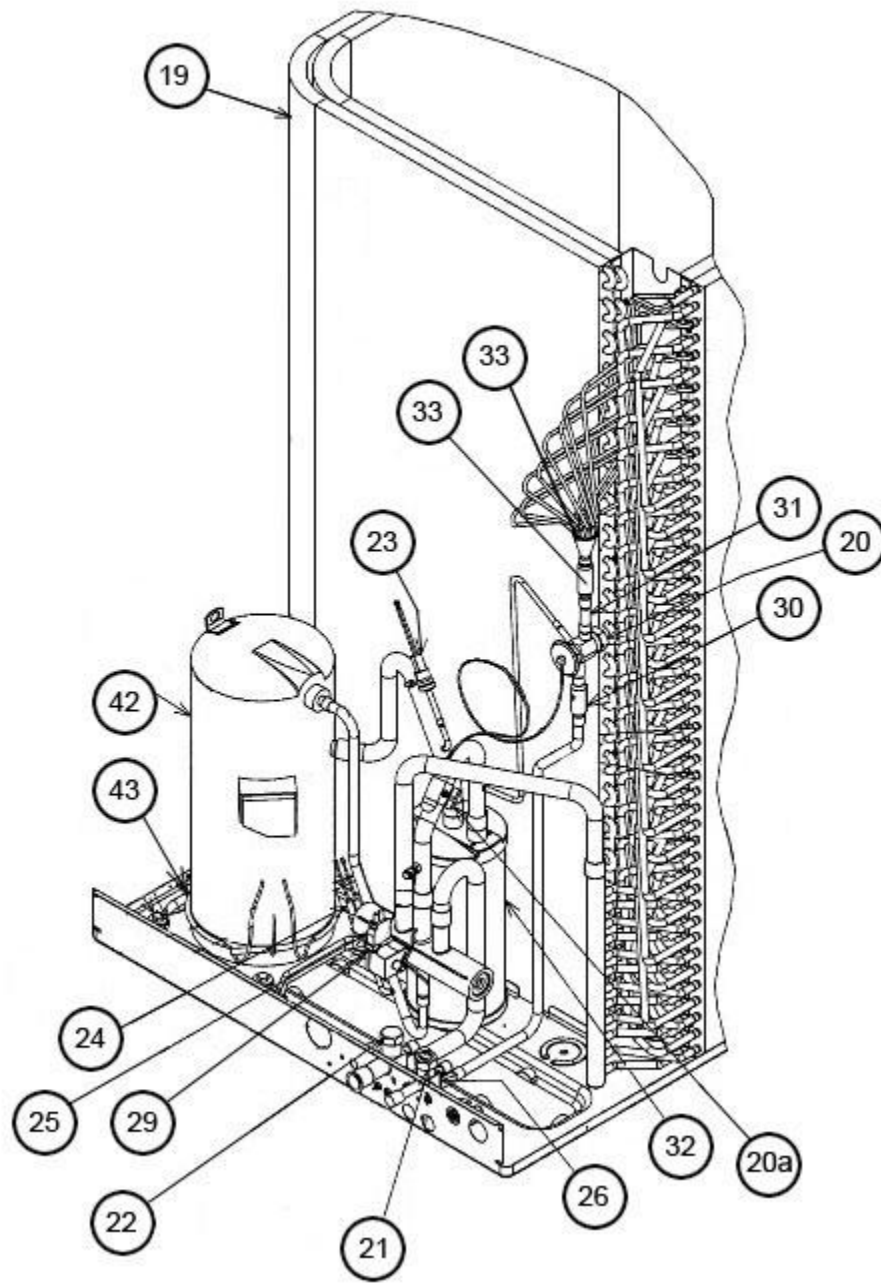
No.	Notes	MODEL COOLING CAPACITY ELECTRICAL DESIGNATION DESIGN VARIATION	RPCL2 120 CAZ B	RPCL2 120 DAZ B
<b>COMPRESSOR GROUP</b>				
		<b>Compressor ID:</b>	<b>9867</b>	<b>9868</b>
42	Stk	Compressor	55-23156-56	55-23156-57
		Compressor Grommet (4)	56-18518-06	56-18518-06
		Compressor Bolt (4)	63-20072-03	63-20072-03
43	Stk	Crankcase Heater	44-17402-22	44-17402-23
	Stk	Compressor Wiring Harness - Low Voltage - Molded Plug "Includes Rectifier"	45-101723-07	45-101723-07
	Stk	Filter Drier	See Coil Group	



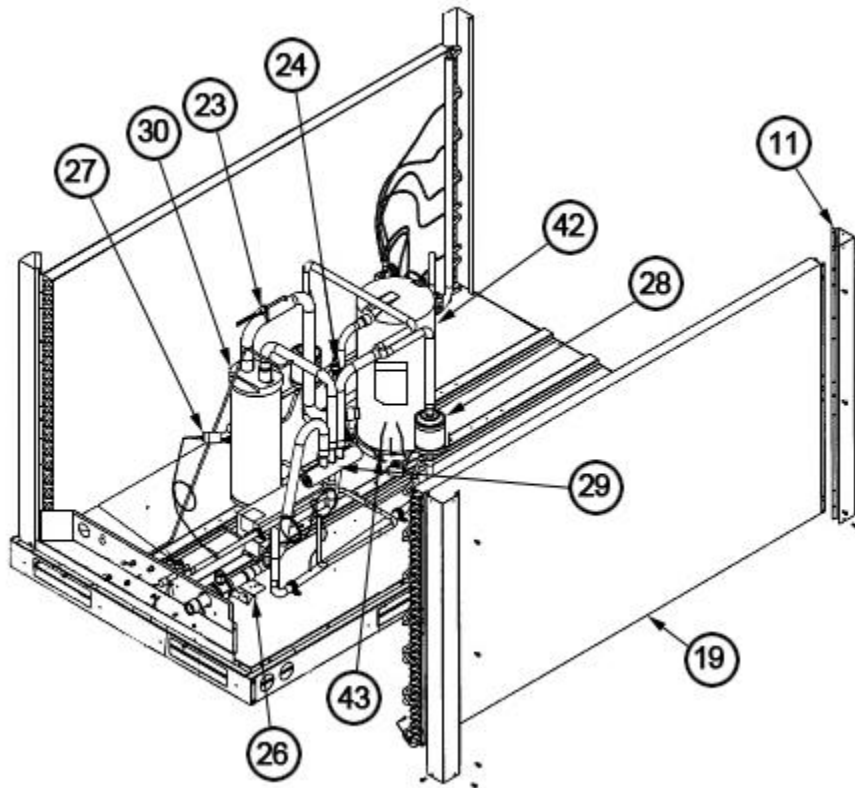
Exploded View - Exterior Panels 090



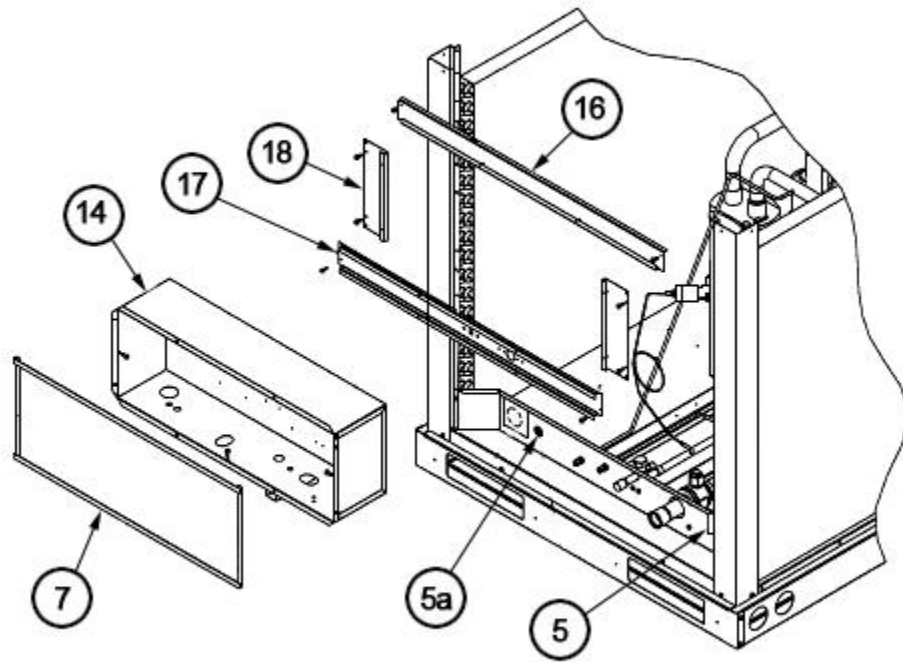
Exploded View - 120



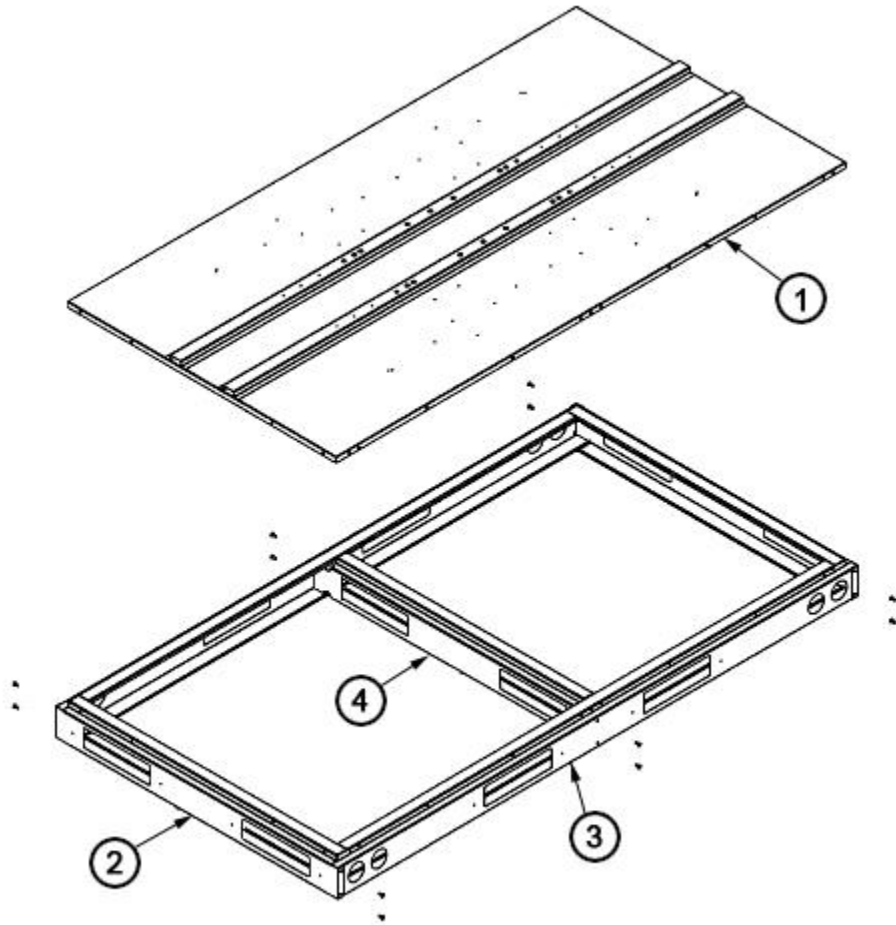
Interior Components - 090



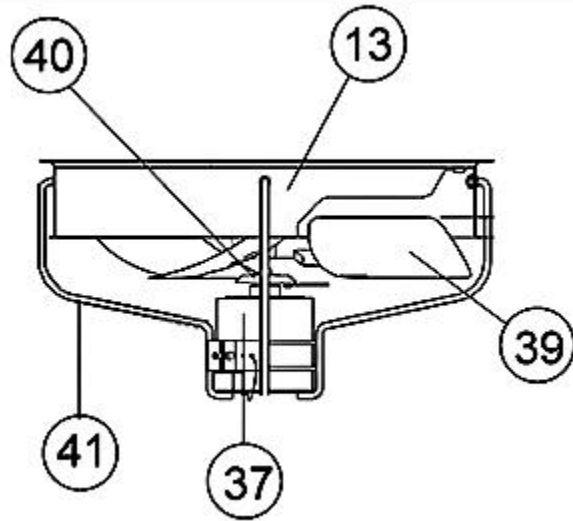
Interior Components - 120



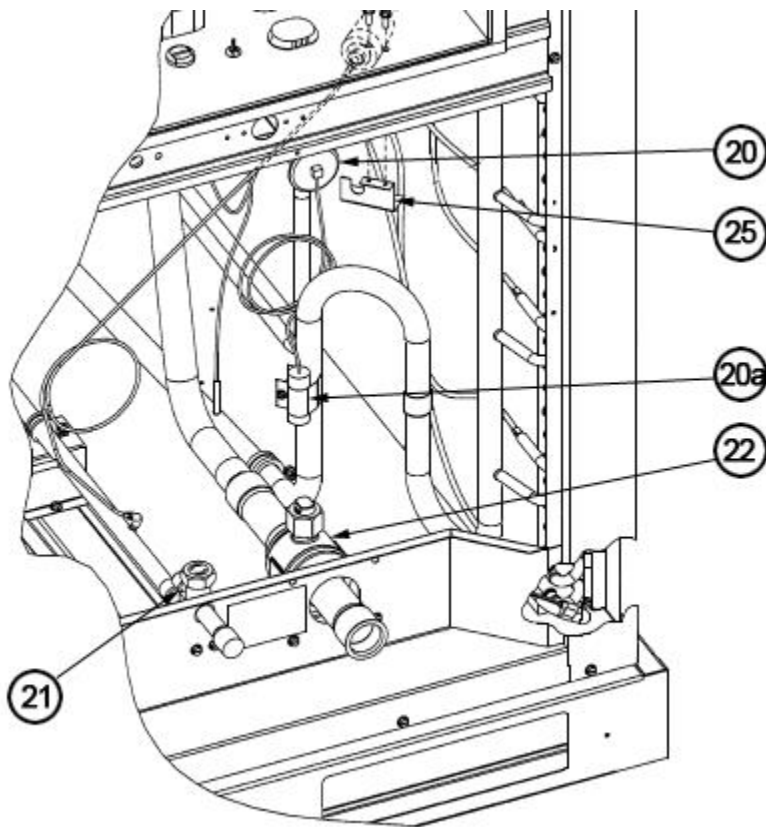
Control Box Mounting - 120



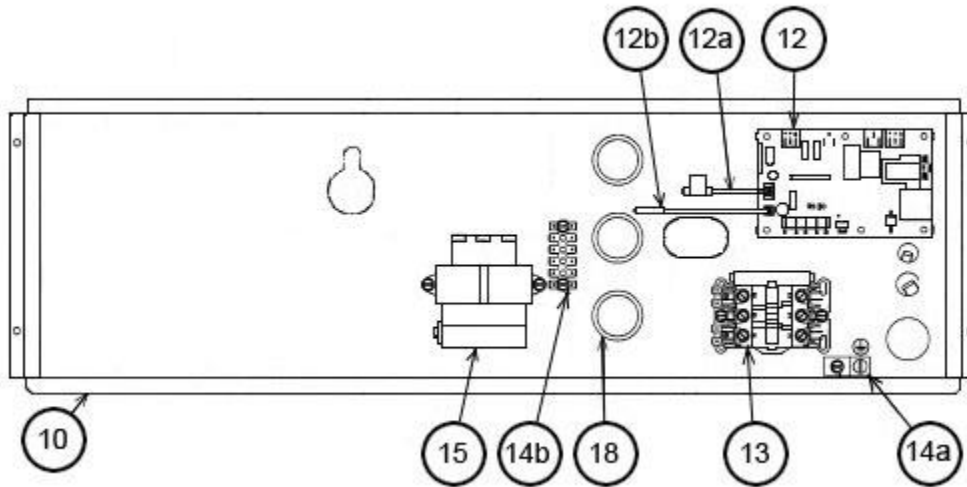
Base Pan, Base Rails - 120



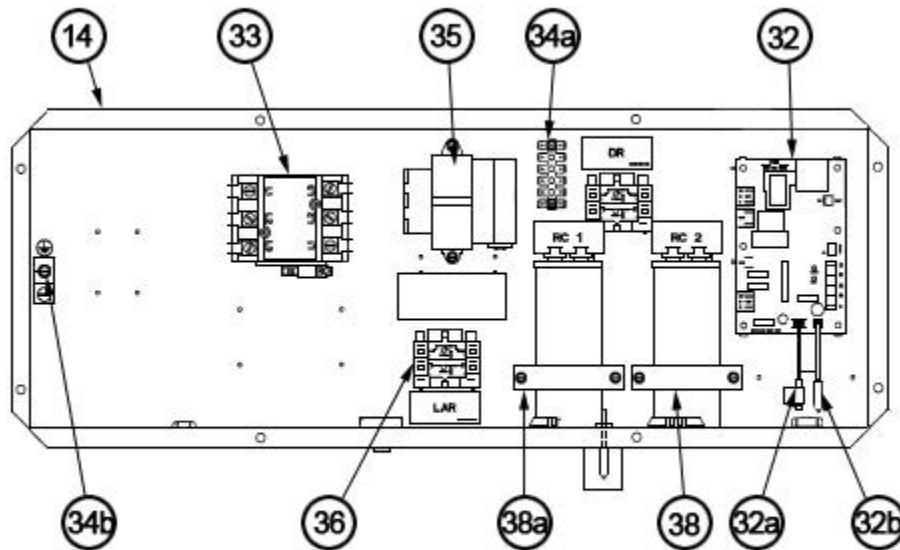
Fan Assembly - 120



Service Valves - 120



Control Box Assembly - 090



Control Box Assembly - 120

# NOTES

Stk It is recommended that stock be maintained for this part.  
N/A Not Applicable

**DISCLAIMER:** This document is intended to provide general replacement parts information to aid qualified service personnel in the repair of these models. The complete Model and Serial Number of the unit under repair should be specified when selecting and ordering replacement parts. Specifications and illustrations are subject to change without notice. Document 92-42800-RPCL2 supersedes all previous parts lists for these models. See <http://www.rheempartslists.net/92-42800-RPCL2> for the latest revision of this document. The manufacturer assumes no obligation for errors or omissions. Service personnel must verify the proper and safe operation of equipment after the replacement of any original components.