



RLHL-D

Parts List
02-October-2017



*This parts list is current as of the above revision date.
See <http://www.rheempartslists.net/92-42800-RLHL-D.pdf> for the current revision.*

Package Air Conditioners - Commercial

Table of Contents

Model Explanation	Page 3
Parts Numbers	
Panels - Miscellaneous 120 (1)	Page 4
Panels - Miscellaneous 120 (2)	Page 5
Panels - Miscellaneous 180 (1)	Page 6
Panels - Miscellaneous 180 (2)	Page 7
Electrical Group 120	Page 8
Electrical Group 180	Page 9
Fan Group	Page 10
Blower Group 120	Page 11
Blower Group 180	Page 12
Coil Parts 120	Page 13
Coil Parts 180	Page 14
Compressor Group	Page 15
Heater Kits	Page 16
Accessories 120	Page 17
Accessories 180	Page 18
Drawings/Photographs	
Exploded View 120	Page 19
Exterior - Front 120	Page 20
Exterior - Back 120	Page 20
Interior - Front 120	Page 21
Filter-Coil Assembly 120	Page 22
Condenser Coil Assembly 120	Page 22
Front Panel Brackets 120	Page 23
Filter Frame Assembly 120	Page 24
Blower Assembly 120	Page 24
Control Box 120	Page 25
Low Voltage Shields 120	Page 26
Hybrid Assembly 120	Page 27
Exterior - Front 180	Page 28
Exterior - Back 180	Page 29
Heat Compartment 180	Page 30
Condenser Bulkhead 180	Page 30
Base Pan Assembly 180	Page 31
Base Rail Assembly 180	Page 31
Interior - Front 180	Page 32
Interior - Back 180	Page 33
Filter Frame - Low Voltage Shields 180	Page 34
Condenser Coil - 180	Page 35
Front Panel Brackets 180	Page 36
Blower Assembly 180	Page 37
Control Box 180	Page 38
Hybrid Assembly 180	Page 39
Notes/Disclaimer	Page 40

MODEL NUMBER EXPLANATION

R	L	H	L	-	D	120	C	L	000	AA	B
1	2	3	4		5	6	7	8	9	10	11

- | | |
|--|--|
| <p>1 TRADE NAME</p> <p>2 L = PACKAGE AIR CONDITIONER Commercial</p> <p>3 EFFICIENCY DESIGNATION
H = Hybrid - Air Conditioner/Water Heater</p> <p>4 DESIGN SERIES
L = R-410A</p> <p>5 TECHNICAL VARIATION (DDC)</p> <p>6 COOLING CAPACITY (BTUH)
120 = 120,000
180 = 180,000</p> <p>7 ELECTRICAL DESIGNATION
C = 208-230/3/60
D = 460/3/60</p> | <p>8 DRIVE PACKAGE
L = Belt Drive
M = Belt Drive - High Static</p> <p>9 ELECTRIC HEAT- (Resistance Heat)
000 = No Resistance Heat
010 = 10 kW Resistance Heat
015 = 15 kW Resistance Heat
020 = 20 kW Resistance Heat
030 = 30 kW Resistance Heat
040 = 40 kW Resistance Heat
050 = 50 kW Resistance Heat
060 = 60 kW Resistance Heat
070 = 70 kW Resistance Heat</p> <p>10 OPTION CODES
AA = No Options</p> <p>11 ECONOMIZER OPTIONS
A = No Economizer
H = Single Enthalpy Economizer with Barometric Relief
J = Single Enthalpy Economizer with Barometric Relief and Smoke Detector</p> |
|--|--|

SERIAL NUMBER EXPLANATION (Units Produced before Nov. 2013)

1234	F	50	08	00001
1	2	3	4	5

- 1 COMPRESSOR IDENTIFICATION NUMBER**
- 2 PRODUCTION LOCATION:**
F = Fort Smith, AR
- 3 WEEK OF PRODUCTION**
- 4 YEAR OF PRODUCTION**
- 5 PRODUCTION NUMBER**

SERIAL NUMBER EXPLANATION (Units Produced after Nov. 2013)

F	0	8	1	3	9	9	9	9
(1)	(2)	(3)	(4)					

- (1) PLANT CODE**
F = Fort Smith, AR
- (2) WEEK OF PRODUCTION**
- (3) YEAR OF PRODUCTION**
- (4) PRODUCTION NUMBER**

Note: For Compressor Identification Number, see Compressor Code on Rating Plate

No.	Notes	MODEL TECHNICAL VARIATION COOLING CAPACITY	RLHL- D 120
PANELS - RAILS, BASE PANS, INSIDE CABINET			
		BASE RAILS:	
A		Base Rail - Front	AE-90575-15
B		Base Rail - Right	AE-90576-03
C		Base Rail - Rear	AE-90575-04
D		Base Rail - Left	AE-90576-04
		BASE PANS:	
E		Outdoor Coil Base Pan	AS-90577-23H
F		Indoor Coil Base Pan	AS-90577-12
		INSIDE CABINET:	
G		Entry Plate	AE-90614-01
H		Entry Plate	AE-90614-01
J		Heat Compartment Side	AE-90598-11
K		Blower Deck	AS-90592-17
L		Wireway	AE-90718-05
M		Condenser Bulkhead - Insulation Assembly	AS-90609-43

No.	Notes	MODEL TECHNICAL VARIATION COOLING CAPACITY	RLHL- D 120
PANELS - FRONT			
1		Control Box Door Assembly - w/Hinges, Latch, Gasket, Insulation	AS-102872-23H
2a		Bracket - Top Panel (Left)	AS-102859-16H
2b		Bracket - Top Panel (Center)	AS-102859-15H
2c		Post - Blower Section	AS-102682-15H
3a		Bracket - Bottom Panel (Left)	AS-102859-17H
3b		Bracket - Blower/Heater Compartment	AS-102859-14H
3c		Bracket - Bottom Panel (Right)	AS-102859-13H
		Latch Assembly - Control Box Door (2)	64-103465-01
4		Post Assembly - Indoor Coil Section	AS-90620-25H
5		Control Box Cover	AE-90713-06
6		Control Mounting Plate	AE-90712-06
7a		Low Voltage Shield - Upper Angled	AE-90742-12
7b		Low Voltage Shield - Lower Angled	AE-90742-13
7c		Low Voltage Shield - Middle Strip	AE-90742-14
8		Control Box Back Insulation Assembly	AS-90601-07
9		Mounting Bracket	AE-90779-02
10		Electric Heat Blockoff Plate Assembly (models with no heat)	AS-90720-02
11		Terminal Block	45-42548-02
12		Electric Heat Access Panel Assembly - w/Hinges, Latch, Gasket, Insulation	AS-102872-18H
		Latch Assembly - Electric Heat Door (2)	64-103465-01
13		Power Entry Plate Assembly (plate and cover)	AS-90774-11H
13a		Power Entry Plate	AS-90728-15H
13b		Cover - Power Entry Plate	AS-90728-05H
14		Blower Access Panel Assembly - w/Hinges, Latch, Gasket, Insulation	AS-102872-22H
		Latch Assembly - Blower Access Panel (3)	64-103465-01
15		High Pressure Guard	N/A
16		Heat Mounting Frame Assembly	AS-90754-02
17		Condenser Coil Access Panel-Front	AS-90631-18H
18		Front Corner Post	AS-90701-10H

No.	Notes	MODEL TECHNICAL VARIATION COOLING CAPACITY	RLHL- D 120
PANELS - RIGHT, REAR AND LEFT SIDES			
		RIGHT:	
19		Air Stop	N/A
20		Louver Panel Assembly	AS-90789-01H
		REAR:	
21		Rear Corner Post	AS-90702-08H
22		Condenser Coil Access Panel-Rear	AS-90631-19H
23		Rear Panel	AS-90618-13H
24		Supply Cover	AS-90626-02H
25		Return Cover	AS-90628-02H
		LEFT:	
26		Upper Left Panel	AS-90624-03H
27		Lower Left Panel	AS-90624-04H
28		Left Corner Panel	AS-90755-08H
29		Plate - Receptacle	AS-90756-02H
30		Plate - Disconnect	AS-90756-03H
31		Button Plug (2)	45-22980-06
32		Button Plug	45-22980-05
		TOP:	
33		Top Panel Assembly	AS-90616-06H
34		Condenser Top Panel	AS-90703-08H
35		Venturi	AS-90632-03H (2)
36		Wire Grille	95-100906-09 (2)
43		Drain Pan - Removable	See Coil Group

No.	Notes	MODEL TECHNICAL VARIATION COOLING CAPACITY	RLHL- D 180
PANELS - RAILS, BASE PANS, INSIDE CABINET			
BASE RAILS:			
A		Front	AS-90827-03
B		Right	AE-90576-06
C		Rear	AS-90827-04
D		Left	AE-90576-05
BASE PANS:			
E		Outdoor Base Pan (includes insulation)	AS-90577-16H
F		Indoor Coil Base Pan - Return Air (includes insulation)	AS-90577-09
G		Indoor Coil Base Pan - Supply Air (includes insulation)	AS-90577-10
INSIDE CABINET PANEL/PIECES:			
H 1		Entry Plate	AE-90614-01
H 2		Entry Plate - Rooftop	AE-90614-01
J		Heat Compartment Side	AE-90598-13
K		Blower Deck Assembly	AS-90592-19
L		Wireway	AE-90718-04
M		Condenser Bulkhead (includes insulation)	AS-90609-45
O		Bulkhead Support	AE-102725-01
P		Primary Drain Pan	AS-103030-02
		Air Stop - Outdoor Coil- Front	AE-90706-21
		Air Stop - Outdoor Coil- Rear	AE-90706-20
U		Coil Support Top	AE-102700-07
V		Angle - Tube Support (2)	N/A

No.	Notes	MODEL TECHNICAL VARIATION COOLING CAPACITY	RLHL- D 180
PANELS - FRONT AND RIGHT SIDES			
1		Control Box Door Assembly - w/Hinges, Gasket, Insulation	AS-102872-04H
2a		Bracket - Top Panel (Left)	AS-102859-01H
2b		Bracket - Top Panel (Center)	AS-102969-01H
2c		Post - Blower Section	AS-102682-21H
3a		Bracket - Bottom Panel (Left)	AS-102859-02H
3b		Bracket - Blower/Heater Compartment	AS-102859-11H
3c		Bracket - Bottom Panel (Right)	AS-102859-12H
4		Post Assembly - Indoor Coil Section	AS-90620-15H
5		Control Box Cover	AE-90713-05
6		Control Mounting Panel	AE-90712-05
7a		Low Voltage Shield - Control Box (Upper Right)	AE-90742-07
7b		Low Voltage Shield - Control Box (Lower Left)	AE-90742-06
7c		Thermostat Chase Cover	AE-102722-01
8		Control Box Back	AS-90601-05
9		Mounting Bracket	AE-90779-02
12		Electric Heat Access Panel Assembly - w/Hinges, Gasket	AS-102872-06H
		Electric Heat Blockoff Plate Assembly (models with no heat)	AS-90720-03
13		Power Entry Plate Assembly	AS-90774-13H
14		Blower Access Panel Assembly - w/Hinges, Gasket, Insulation	AS-102872-02H
16		Mounting Frame - Heat Exchanger Frame	AS-90754-04
17		Condenser Coil Access Panel - Front	AS-90734-14H
38		Post - Outdoor Coil (Front)	
39		Post - Outdoor Coil (Rear)	See Coil Group

No.	Notes	MODEL TECHNICAL VARIATION COOLING CAPACITY	RLHL- D 180
PANELS - REAR, LEFT, AND TOP			
REAR:			
22		Condenser Coil Access Panel-Rear	AS-90734-15H
23		Rear Panel - Right	AS-90618-14H
24		Supply Cover	AS-90628-03H
25		Return Cover	AS-90628-04H
LEFT:			
26		Upper Left Panel	AS-90624-09H
27		Lower Left Panel	AS-90624-08H
28		Left Corner Panel Assembly	AS-90755-05H
		Bracket - Left Corner Panel Assembly (2)	AE-90779-01
		Gasket for receptacle plate	68-42514-08
		Gasket for disconnect plate	68-42514-09
29		Plate - Install inside Panel-Receptacle	AS-90756-02H
30		Plate - Install inside Panel-Disconnect	AS-90756-03H
31		Button Plug (3)	45-42558-01
32		Star Bushing (3)	45-18515-01
TOP:			
33a		Top Panel Assembly - Right	AS-90616-04H
33b		Top Panel Assembly - Left	AS-90616-05H
34		Top Panel	AS-90703-11H
35		Venturi	AS-90632-03H (3)
36		Wire Grille	95-100906-09 (3)
43		Drain Pan - Removable	See Coil Group

No.	Notes	MODEL TECHNICAL VARIATION COOLING CAPACITY ELECTRICAL DESIGNATION	RLHL- D 120 C	RLHL- D 120 D
ELECTRIC GROUP				
		Terminal Block - Heater Compartment	45-41669-01	45-41669-01
		Ground Lug - Heater Compartment	45-19000-02	45-19000-02
		Outlet Box	45-41952-02	45-41952-02
		Receptacle Cover	45-41953-02	45-41953-02
		Receptacle - Ground Fault	45-41954-01	45-41954-01
CONTROL BOX COMPONENTS (57a - 62):				
57a	Stk	Transformer - Control	46-42515-04	46-42515-05
57b	Stk	Transformer - Step Down	N/A	46-103972-02
58a		Double Row Terminal Block	45-42548-02	45-42548-02
58b		Ground Lug	45-19000-02	45-19000-02
59a	Stk	Contactora - Blower	42-102664-08	42-102664-08
59b	Stk	Relay - Outdoor Fan	42-102234-01	42-102234-01
59c	Stk	Relay - Water Shutoff	42-102234-01	42-102234-01
60		Capacitor - Fan Motor	See Fan Group	
61a		Unit Controller (RTU-C)	47-102883-02	47-102883-02
61b		eSYNC Controller	47-104045-01	47-104045-01
62	Stk	Compressor Contactor (2)	42-102664-08	42-102664-08
MISCELLANEOUS:				
		Pressure Switch Assembly - (Clogged Filter and Fan Proving)	42-103320-27	42-103320-27
		Comfort Alert	42-101504-03	42-101504-03
		Low Ambient Control Assembly	AS-103034-01	AS-103034-01
		High Pressure Control	See Coil Group	
		Low Pressure Control	See Coil Group	
WIRING HARNESES:				
		Wiring Harness - Motor #1	See Fan Group	
		Wiring Harness - Motor #2	See Fan Group	
		Plug Harness - Compressor	See Compressor Group	
		Wiring Harness - Main Power	45-42522-09	45-42522-09
		Wiring Harness - 6 Pin to Heater Kit	45-102706-09	45-102706-09
		Wiring Harness - Outdoor Fan Motor #1	See Fan Group	
		Wiring Harness - Outdoor Fan Motor #2	See Fan Group	
		Wiring Harness - Economizer (Twist-Loc, 12 Pin and 4 Pin to 9 Pin)	45-42522-100	45-42522-100
		Jumper - Configuration Plug (7 Pin Connector)	45-42522-104	45-42522-104
		Wiring Harness - Main Power	45-42522-09	45-42522-09
		Wiring Harness - eSYNC Control Board to Rooftop Control Board (4 Pin to 4 Pin)	45-42522-95	45-42522-95
		Wiring Harness - Clogged Filter Switch/Fan Proving Switch (8 Pin to 4 Connectors and 2 Temperature Sensors)	45-42522-98	45-42522-98
		Wiring Harness - Compressor Control (14 Pin and Four 2 Pin Connectors and Three Temperature Sensors)	45-42522-99	45-42522-99
		Wiring Harness - Pressure Transducer (Refrigerant)	45-104130-02	45-104130-02
		Plug Harness - Compressor	See Compressor Group	
		Bypass Plug - Economizer (12 Pin)	AS-61997-55	AS-61997-55

No.	Notes	MODEL TECHNICAL VARIATION COOLING CAPACITY ELECTRICAL DESIGNATION	RLHL- D 180 C	RLHL- D 180 D
ELECTRIC GROUP				
11		Terminal Block - Heater Compartment	45-21134-04	45-21134-04
15		Ground Lug - Heater Compartment	45-19000-02	45-19000-02
CONTROL BOX COMPONENTS:				
57a	Stk	Transformer - Control	46-42515-04	46-42515-05
57b	Stk	Transformer - Step Down	N/A	46-103972-02
58a		Terminal Block - Double Row	45-42548-02	45-42548-02
58b		Terminal Block	45-21134-04	45-21134-04
58c		Ground Lug	45-19000-02	45-19000-02
59a	Stk	Contactoer - Blower	42-102664-08	42-102664-08
59b	Stk	Relay - Outdoor Fan	42-19736-05	42-19736-05
59c	Stk	Relay - Water Shutoff	42-102234-01	42-102234-01
60		Run Capacitor	See Fan Group	
61a		RoofTop Unit Controller (RTU-C)	47-102883-02	47-102883-02
61b		eSYNC Controller	47-104045-01	47-104045-01
62a	Stk	Compressor Contactor #1	42-102664-12	42-102664-12
62b	Stk	Compressor Contactor #2	42-102664-12	42-102664-12
62c		Comfort Alert	42-101504-03	42-101504-03
MISCELLANEOUS:				
		Pressure Switch Assembly - (Clogged Filter and Fan Proving)	42-103320-27	42-103320-27
		High Pressure Control	See Coil Group	
		Low Pressure Control	See Coil Group	
WIRING HARNESSSES:				
		Wiring Harness - Fan Motor	See Fan Group	
		Plug Harness - Compressor	See Compressor Group	
		Bypass Plug - Economizer 12 Pin	AS-61997-55	AS-61997-55
		Wiring Harness - Twist-Loc, Economizer (12 Pin and 4 Pin to 9 Pin)	45-42522-93	45-42522-93
		Wiring Harness - Compressor Control (14 Pin to Four 2 Pin Connectors and Three Temperature Sensors)	45-42522-78	45-42522-78
		Wiring Harness - Heater Control	45-42522-91	45-42522-91
		Wiring Harness - Main Power	45-42522-92	45-42522-92
		Wiring Harness - Compressor Control (14 Pin to Four 2 Pin Connectors and Three Temperature Sensors)	45-42522-78	45-42522-78
		Wiring Harness - 8 Pin to 4 Connectors and 2 Temperature Sensors	45-42522-98	45-42522-98

No.	Notes	MODEL TECHNICAL VARIATION COOLING CAPACITY ELECTRICAL DESIGNATION	RLHL- D 120 C	RLHL- D 120 D
FAN GROUP				
52	Stk	Fan Motor (2)	51-42534-24	51-42534-25
		Wirng Harness - Outdoor Fan Motor #1	45-102706-21	45-102706-21
		Wirng Harness - Outdoor Fan Motor #2	45-102706-22	45-102706-22
53	Stk	Fan Blade (2)	70-42572-04	70-42572-04
60	Stk	Capacitor - Fan Motor (2)	43-100496-12	43-100496-12

No.	Notes	MODEL TECHNICAL VARIATION COOLING CAPACITY ELECTRICAL DESIGNATION	RLHL- D 180 C	RLHL- D 180 D
FAN GROUP				
52	Stk	Fan Motor	51-42534-24 (3)	51-42534-25 (3)
		Wiring Harness - Motor #1, #2	45-42522-71	45-42522-71
		Wiring Harness - Motor #3	45-42522-114	45-42522-114
53	Stk	Fan Blade (3)	70-42572-04	70-42572-04
60	Stk	Capacitor - Fan Motor	43-100496-12 (3)	43-100496-12 (3)

No.	Notes	MODEL TECHNICAL VARIATION COOLING CAPACITY DRIVE PACKAGE	RLHL- D 120 L
BLOWER ASSEMBLY GROUP - BELT DRIVE			
64	Stk	Blower Assembly (Includes Items 65-68)	AS-90757-01
65	Stk	Blower Wheel	70-42540-02
66		Bearing Frame Tri-Arm (2)	70-42540-05
67		Bearing with Bearing Lock (2)	70-41854-02
68	Stk	Blower Shaft	70-42540-04
69		Blower Mounting Angles (2)	AE-90708-01
		Blower Angle Stop	AE-90709-02
70		Motor Mount	AE-90710-04
71	Stk	Blower Motor (C/D Voltages)	51-42536-01
72	Stk	Variable Sheave	71-42538-02
73	Stk	Belt	71-40438-27
74	Stk	Fixed Sheave	71-100774-02
		Key	94-42551-09
	Stk	Bushing for Sheave w/Screws	71-100773-01

No.	Notes	MODEL TECHNICAL VARIATION COOLING CAPACITY DRIVE PACKAGE	RLHL- D 120 M
BLOWER ASSEMBLY GROUP - BELT DRIVE			
64	Stk	Blower Assembly (Includes Items 65-68)	AS-90757-01
65	Stk	Blower Wheel	70-42540-02
66		Bearing Frame Tri-Arm (2)	70-42540-05
67		Bearing with Bearing Lock (2)	70-41854-02
68	Stk	Blower Shaft	70-42540-04
69		Blower Mounting Angles (2)	AE-90708-01
		Blower Angle Stop	AE-90709-02
70		Motor Mount	AE-90710-04
71	Stk	Blower Motor (C/D Voltages)	51-42537-01
72	Stk	Variable Sheave	71-42538-02
73	Stk	Belt	71-40438-23
74	Stk	Fixed Sheave	71-100774-04
		Key	94-42551-09
	Stk	Bushing for Sheave w/Screws	71-100773-01

No.	Notes	MODEL TECHNICAL VARIATION COOLING CAPACITY DRIVE PACKAGE	RLHL- D 180 L
BLOWER ASSEMBLY GROUP - BELT DRIVE			
64	Stk	Blower Assembly - Includes Items 65 and 66	AS-90757-06
65	Stk	Blower Wheel (2)	70-42564-02
66		Bearing Frame Tri-Arm (4)	70-42284-04
67		Bearing with Bearing Lock (4)	70-41854-02
68	Stk	Blower Shaft	70-42564-03
69		Blower Connector Angles (3)	AE-90798-01
70		Motor Mount	AE-90710-03
71	Stk	Blower Motor - C/D Voltages	51-42537-01
72	Stk	Variable Sheave	71-42538-02
73	Stk	Belt	71-40438-43
74a	Stk	Fixed Sheave	71-100774-08
74b		Key	94-42551-09
74c	Stk	Bushing for Sheave w/Screws	71-100773-01

No.	Notes	MODEL TECHNICAL VARIATION COOLING CAPACITY DRIVE PACKAGE	RLHL- D 180 M
BLOWER ASSEMBLY GROUP - BELT DRIVE			
64	Stk	Blower Assembly - Includes Items 65 and 66	AS-90757-06
65	Stk	Blower Wheel (2)	70-42564-02
66		Bearing Frame Tri-Arm (4)	70-42284-04
67		Bearing with Bearing Lock (4)	70-41854-02
68	Stk	Blower Shaft	70-42564-03
69		Blower Connector Angles (3)	AE-90798-01
70		Motor Mount	AE-90710-03
71	Stk	Blower Motor - C/D Voltages	51-102826-06
72	Stk	Variable Sheave	71-40427-04
73	Stk	Belt	71-40438-46
74a	Stk	Fixed Sheave	71-100774-08
74b		Key	94-42551-09
74c	Stk	Bushing for Sheave w/Screws	71-100773-01

No.	Notes	MODEL TECHNICAL VARIATION COOLING CAPACITY	RLHL- D 120
COIL GROUP			
EVAPORATOR COIL GROUP:			
42a	Stk	Evaporator Coil	AS-104522-02
42b	Stk	TXV - Circuit #1	61-42662-15
42c	Stk	TXV - Circuit #2	61-42662-16
42d		Valve Body	61-18542-01
42e		Valve Core	61-18551-01
42f		Valve Cap	83-100635-01
42g		Pressure Transducer	47-103454-01
42h		Bulkhead Valve (4)	61-22369-04
		Locknut - Bulkhead Valve	63-22368-01
42i		Sensor Assembly - Liquid Line	47-103971-01
43	Stk	Drain Pan - Removable	68-102699-02
FILTER PIECES:			
44		Filter Frame	AE-90606-12
45		Air Stop - Bottom	AE-102712-10
46		Air Stop - Side	AE-102712-12
47		Top Air Stop Assembly	AS-90604-06
48		Filter Channel (2)	AE-102712-08
49		Filter Slide (2)	AE-102712-11
50		Filter (6)	54-42541-01
CONDENSER COIL GROUP:			
37a	Stk	Condenser Coil	65-101478-08
37b	Stk	Condenser Coil	65-101478-08
40a		Micro-Channel Coil Mounting Base - Left	68-102752-01
40b		Micro-Channel Coil Mounting Base - Right	68-102752-02
41a		Top Support - Condenser Coil	AE-90612-31
41b		Top Support - Condenser Bulkhead	AE-90612-05
41c		Filter Drier - Liquid Line (2)	83-22755-05
41d		Strap - Filter Drier	AE-102132-01
41e	Stk	High Pressure Control	47-102290-01
41f	Stk	Low Pressure Control (2)	47-101529-09
41g	Stk	High Pressure Control	47-103669-01
HYBRID ASSEMBLY GROUP			
81a		Heat Exchanger	65-103456-03
81b		Bracket - Heat Exchanger	AE-103878-22
81c		EZ Twist Lock Support	64-23207-02
82a	Stk	3 - Way Valve	61-103902-02
82b		Support Bracket - (3-Way Valve)	63-42109-01
82c		Capture Bracket (for 3-Way Valve)	AE-103878-12
83a		Flange Set - Water Pump	38-103141-07
83b	Stk	Water Pump (gaskets for each end - included)	38-103141-26
83c		Bracket - Water Pump	AE-103878-14
84a	Stk	Solenoid Coil	61-103961-07
84b	Stk	Solenoid Valve	61-103961-04
84c		Bracket - Solenoid Valve	AE-103878-17
84d		Capture Bracket (for Solenoid Valve Bracket)	AE-103878-23
85a		Valve Body	61-18542-01
85b		Valve Core	61-18551-01
85c		Valve Cap	83-100635-01
86	Stk	Check Valve (5)	61-103883-02
86a		Distributor (3/8 x 3/8 x 3/8)	83-17467-02
87a	Stk	Water Proving Switch Assembly	AS-104624-01
87b	Stk	Temperature Sensor (2)	47-103971-01
87c	Stk	Water Leak Sensor	62-103612-02
88a	Stk	Air Release Vent	61-103553-02
88b		Tee (1-1/2 x 1/1/2 x 3/4 NPT)	82-21547-04
88c		Copper Reducer (1-5/8 x 1-3/8 inch)	82-103904-01
89a		Wrot Union (2)	81-103937-01
89b		Water Support Plate	AE-103878-30HT
	Stk	Brazing Rods (SILVALOY A56T)	31265
	Stk	Brazing Flux - for SILVALOY A56T	86-25254-09

No.	Notes	MODEL TECHNICAL VARIATION COOLING CAPACITY	RLHL- D 180
COIL GROUP			
EVAPORATOR COIL GROUP:			
40		Air Flow Panel	AS-90828-02H
42	Stk	Complete Coil - Indoor	AS-102821-06
42a	Stk	TXV/Distributor Assembly - Circuit #1	61-102845-01
42b	Stk	TXV/Distributor Assembly - Circuit #2	61-102845-02
42c		Filter Drier - Liquid Line	83-22755-13
42d		Valve Core	61-18551-01
42e		Valve Cap	83-100635-01
42f		Valve Body	61-18542-01
42g		Pressure Transducer	47-103454-01
42h		Sensor Assembly - Liquid Line	47-103971-04
43	Stk	Drain Pan - Removable	68-102699-01
FILTER PIECES:			
44		Filter Frame	AE-90606-10
45		Air Stop - Bottom	AE-102712-17
46		Air Stop - Side	AE-102712-14
47		Top Air Stop Assembly	AS-90604-04
48		Filter Channel (2)	AE-102712-16
49		Filter Slide (2)	AE-102712-15
50		Filter - 20 in. x 25 in. x 2 in. (8)	54-42541-04
CONDENSER COIL:			
37	Stk	Condenser Coil (2)	65-101478-09
37a		Coil Mounting Base - Left	68-102752-01
37b		Coil Mounting Base - Right	68-102752-02
38		Post - Outdoor Coil (Front)	AS-90701-08H
38a		Air Stop - Front	AE-90706-21
39		Post - Outdoor Coil (Rear)	AS-90702-06H
39a		Air Stop - Rear	AE-90706-20
41a		Top Support - Inner Condenser Coil (2)	AE-90612-28
41b		Top Support - Condenser Bulkhead	AE-90612-24
41c		Filter Drier - Liquid Line	83-22755-13
41d		Valve Core	61-18551-01
41e		Valve Cap	83-100635-01
41f	Stk	High Pressure Control (2)	47-103669-01
41g	Stk	Low Pressure Control (2)	47-101529-09
HYBRID ASSEMBLY GROUP			
81a		Heat Exchanger	65-103456-03
81b		Bracket - Heat Exchanger	AE-103878-22
81c		EZ Twist Lock Support	64-23207-02
82a	Stk	3 - Way Valve	61-103902-02
82b		Support Bracket - (3-Way Valve)	63-42109-01
82c		Capture Bracket (for 3-Way Valve)	AE-103878-12
83a		Flange Set - Water Pump	38-103141-07
83b	Stk	Water Pump (gaskets for each end - included)	38-103141-26
83c		Bracket - Water Pump	AE-103878-14
84a	Stk	Solenoid Coil	61-103961-07
84b	Stk	Solenoid Valve	61-103961-04
84c		Bracket - Solenoid Valve	AE-103878-17
84d		Capture Bracket (for Solenoid Valve Bracket)	AE-103878-23
85a		Valve Body	61-18542-01
85b		Valve Core	61-18551-01
85c		Valve Cap	83-100635-01
86	Stk	Check Valve (5)	61-103883-02
86a		Distributor (5/8 x 1/2 x 1/2)	83-41634-01
87a	Stk	Water Proving Switch Assembly	AS-104624-01
87b	Stk	Temperature Sensor (2)	47-103971-03
87c	Stk	Water Leak Sensor	62-103612-02
88a	Stk	Air Release Vent	61-103553-02
88b		Tee (1-1/2 x 1/1/2 x 3/4 NPT)	82-21547-04
88c		Copper Reducer (1-5/8 x 1-3/8 inch)	82-103904-01
89a		Wrot Union (2)	81-103937-01
89b		Water Support Plate	AE-103878-33HT
	Stk	Brazing Rods (SILVALOY A56T)	31265
	Stk	Brazing Flux - for SILVALOY A56T	86-25254-09

No.	Notes	MODEL TECHNICAL VARIATION COOLING CAPACITY ELECTRICAL DESIGNATION	RLHL- D 120 C
COMPRESSOR GROUP			
		Compressor ID:	8590
75	Stk	Compressor (2)	55-102045-83S
	Stk	Plug Harness - Compressor	45-102708-01
	Stk	Plug Harness - Compressor (Longer Length)	45-102708-02

No.	Notes	MODEL TECHNICAL VARIATION COOLING CAPACITY ELECTRICAL DESIGNATION	RLHL- D 120 D
COMPRESSOR GROUP			
		Compressor ID:	8591
75	Stk	Compressor (2)	55-102045-84S
	Stk	Plug Harness - Compressor	45-102708-01
	Stk	Plug Harness - Compressor (Longer Length)	45-102708-02

No.	Notes	MODEL TECHNICAL VARIATION COOLING CAPACITY ELECTRICAL DESIGNATION	RLHL- D 180 C
COMPRESSOR GROUP			
		Compressor:	8623
75	Stk	Compressor (2)	55-23156-29S
		Plug Harness - Compressor #1	45-42522-73
		Plug Harness - Compressor #2	45-42522-72

No.	Notes	MODEL TECHNICAL VARIATION COOLING CAPACITY ELECTRICAL DESIGNATION	RLHL- D 180 D
COMPRESSOR GROUP			
		Compressor:	8624
75	Stk	Compressor (2)	55-23156-30S
		Plug Harness - Compressor #1	45-42522-73
		Plug Harness - Compressor #2	45-42522-72

No.	Notes	MODEL	RLHL-	RLHL-	RLHL-	RLHL-	RLHL-
		TECHNICAL VARIATION	D	D	D	D	D
		COOLING CAPACITY	120	120	120	120	120
		ELECTRICAL DESIGNATION	C	C	C	C	C
ELECTRIC HEATER KITS							
		Electric Element Kits	RXJJ-CC10C	RXJJ-CC15C	RXJJ-CC20C	RXJJ-CC30C	RXJJ-CC40C
		Electric Element Kits	RXJJ-CC50C				

No.	Notes	MODEL	RLHL-	RLHL-	RLHL-	RLHL-	RLHL-
		TECHNICAL VARIATION	D	D	D	D	D
		COOLING CAPACITY	120	120	120	120	120
		ELECTRICAL DESIGNATION	D	D	D	D	D
ELECTRIC HEATER KITS							
		Electric Element Kits	RXJJ-CC10D	RXJJ-CC15D	RXJJ-CC20D	RXJJ-CC30D	RXJJ-CC40D
		Electric Element Kits	RXJJ-CC50D				

No.	Notes	MODEL	RLHL-	RLHL-	RLHL-	RLHL-	
		TECHNICAL VARIATION	D	D	D	D	
		COOLING CAPACITY	180	180	180	180	
		ELECTRICAL DESIGNATION	C	C	C	C	
ELECTRIC HEATER KITS							
		Electric Element Kits	RXJJ-CE20C	RXJJ-CE40C	RXJJ-CE60C	RXJJ-CE75C	

No.	Notes	MODEL	RLHL-	RLHL-	RLHL-	RLHL-	
		TECHNICAL VARIATION	D	D	D	D	
		COOLING CAPACITY	180	180	180	180	
		ELECTRICAL DESIGNATION	D	D	D	D	
ELECTRIC HEATER KITS							
		Electric Element Kits	RXJJ-CE20D	RXJJ-CE40D	RXJJ-CE60D	RXJJ-CE75D	

No.	Notes	MODEL TECHNICAL VARIATION COOLING CAPACITY	RLHL- D 120
ACCESSORIES			
		Louver Panel - Option	AXRX-AAD02A
		Carbon Dioxide Sensor	RXRX-AR02
		Dual Enthalpy Kit	RXRX-AV03
		Manual Fresh Air Damper (Return Panel)	AXRF-JDA1
		Manual Fresh Air Damper (Left Panel Mounted)	AXRF-KDA1
		Motor Kit for AXRF-KDA1	RXRX-AW02
		Modulating Motor Kit w/position feedback for RXRF-KDA1	RXRX-AW04
		Motorized Fresh Air Damper (Horizontal Return Mounted)	AXRF-JDB1
		Comfort Alert (1 Per Compressor)	RXRX-AZ01
		BACnet Communication Card	RXRX-AY01
		LonWorks Communication Card	RXRX-AY02
		Convenience Outlet - Option	RXRX-AN01
		Low Ambient Control Kit (1 Per Compressor)	RXRZ-C02

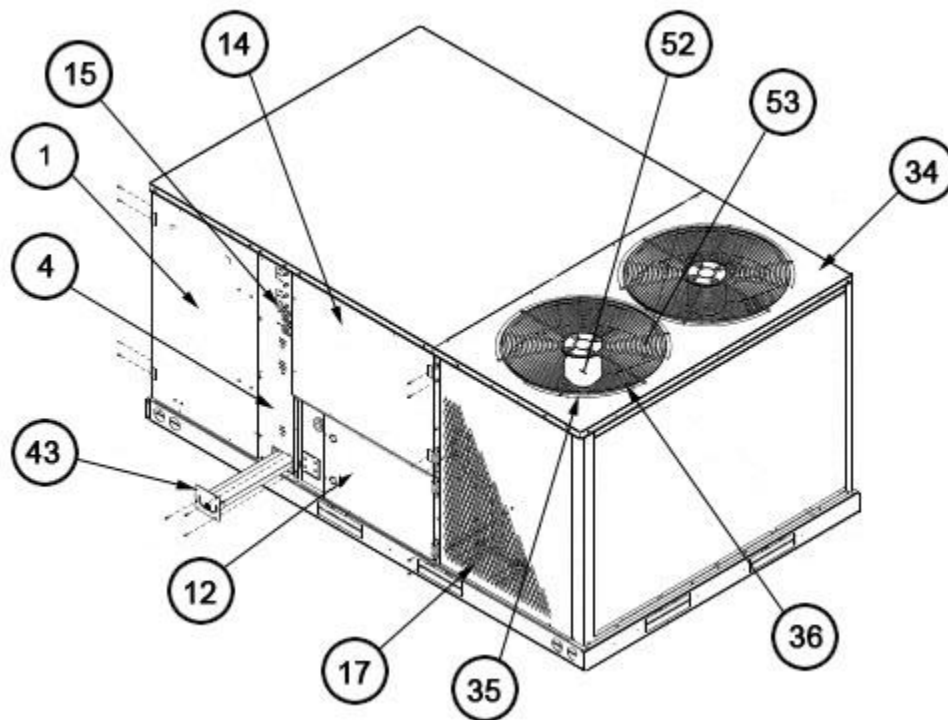
No.	Notes	MODEL TECHNICAL VARIATION COOLING CAPACITY	RLHL- D 120
ECONOMIZERS			
		Economizer - Single Enthalpy	AXRD-PJCM3
		Economizer - Single Enthalpy w/Smoke Detector	AXRD-SJCM3

No.	Notes	MODEL TECHNICAL VARIATION COOLING CAPACITY	RLHL- D 120
POWER EXHAUST			
		Power Exhaust - 208/230 volt	RXRX-BFF02C
		Power Exhaust - 460 volt	RXRX-BFF02D

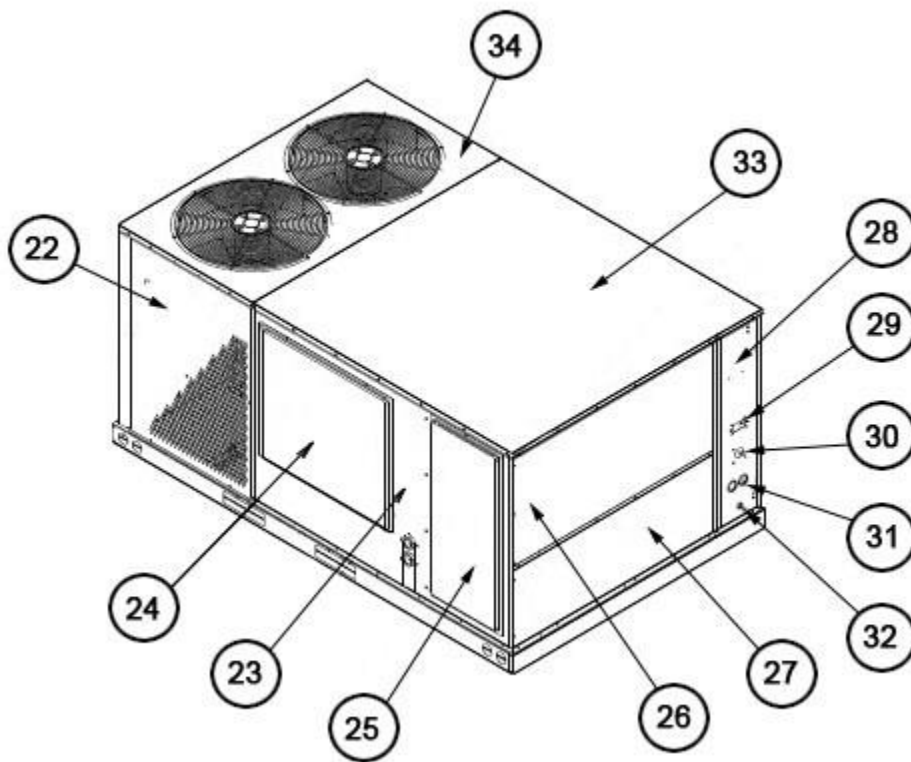
No.	Notes	MODEL TECHNICAL VARIATION COOLING CAPACITY	RLHL- D 180
ACCESSORIES			
		Carbon Dioxide Sensor (Wall Mount)	AXRX-AAD01K
		Carbon Dioxide Sensor (Wall Mount)	RXRX-AR02
		Dual Enthalpy Kit	RXRX-AV03
		Manual Fresh Air Damper - Gray	AXRF-KFA1
		Motorized Kit for AXRF-KFA1	RXRX-AW03
		Modulating Motor Kit (w/position feedback) for AXRF-KFA1	RXRX-AW05
		BACnet Communication Card	RXRX-AY01
		LonWorks Communication Card	RXRX-AY02
		Unwired Convenience Outlet	RXRX-AN01
		Comfort Alert (One per Compressor)	RXRX-AZ01
		Low Ambient Control Kit (One per Compressor)	RXRZ-C02

No.	Notes	MODEL TECHNICAL VARIATION COOLING CAPACITY	RLHL- D 180
ECONOMIZERS			
		Downflow Economizer - Single Enthalpy	AXRD-PMCM3
		Downflow Economizer - Single Enthalpy w/Smoke Detector	AXRD-SMCM3

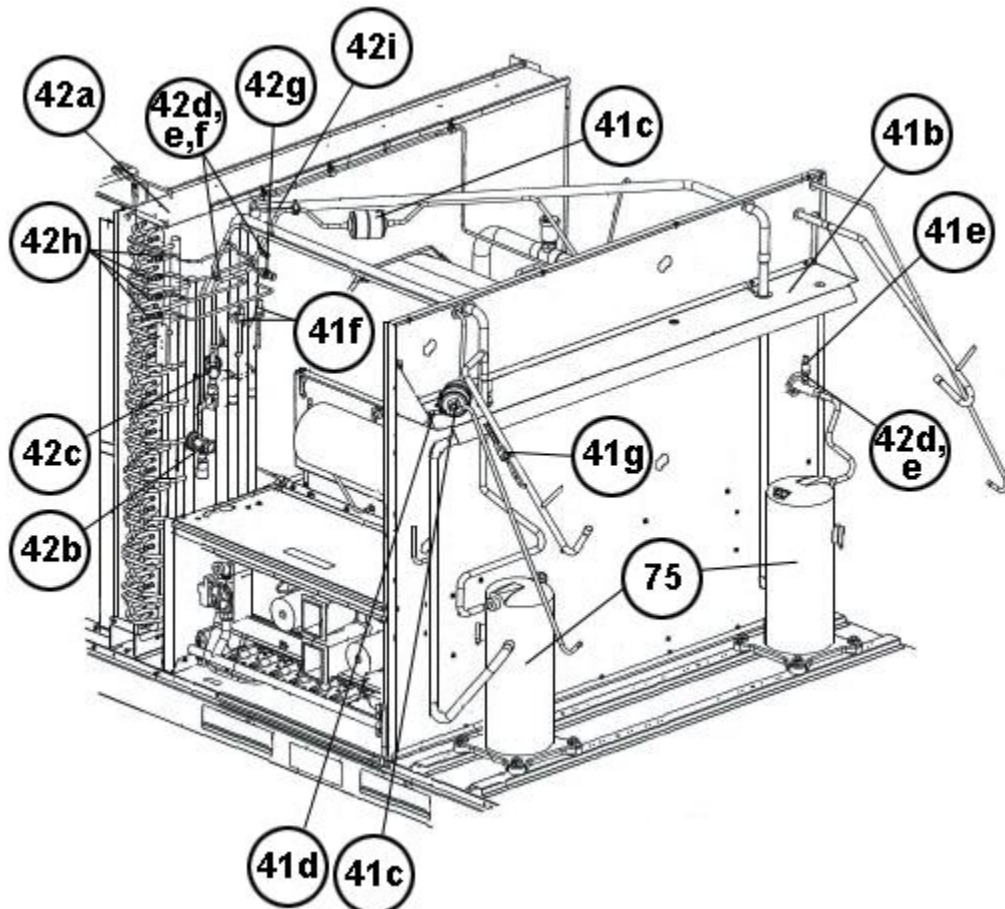
No.	Notes	MODEL TECHNICAL VARIATION COOLING CAPACITY	RLHL- D 180
POWER EXHAUST			
		Power Exhaust (208/230V)	RXRX-BGF05C
		Power Exhaust (460V)	RXRX-BGF05D



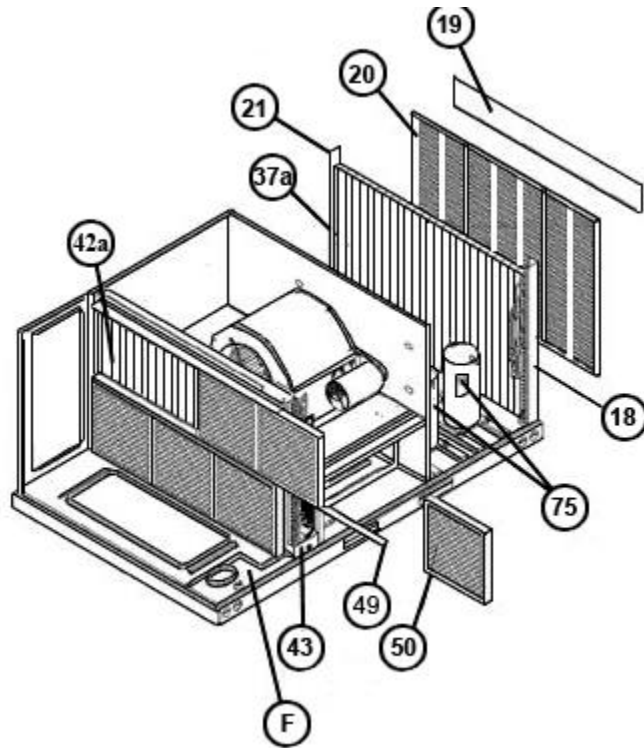
Exterior - Front 120



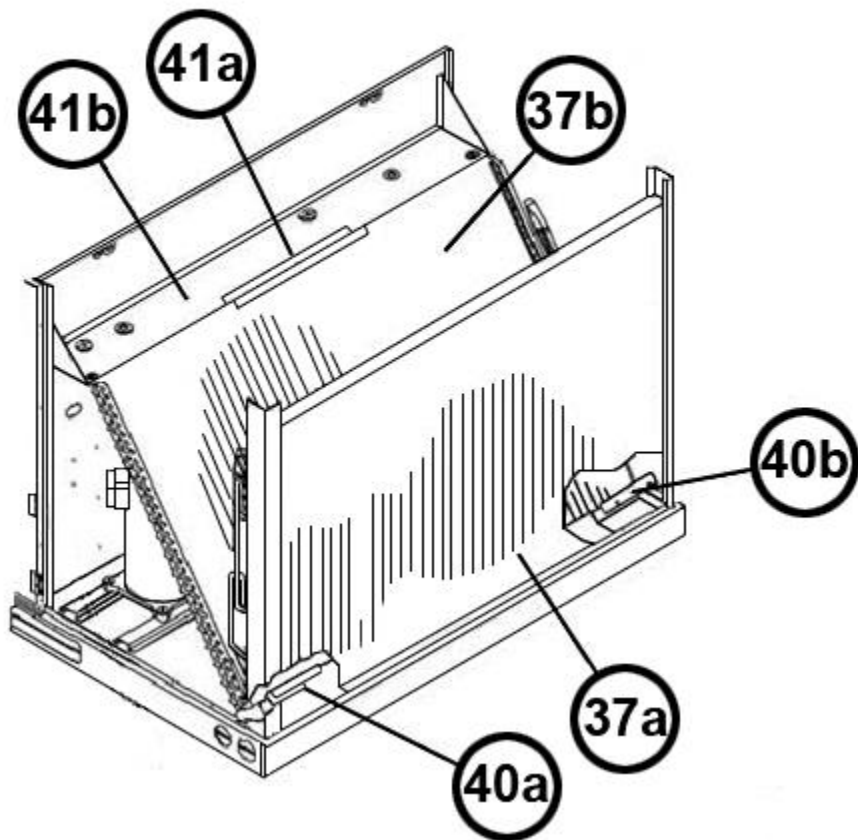
Exterior - Back 120



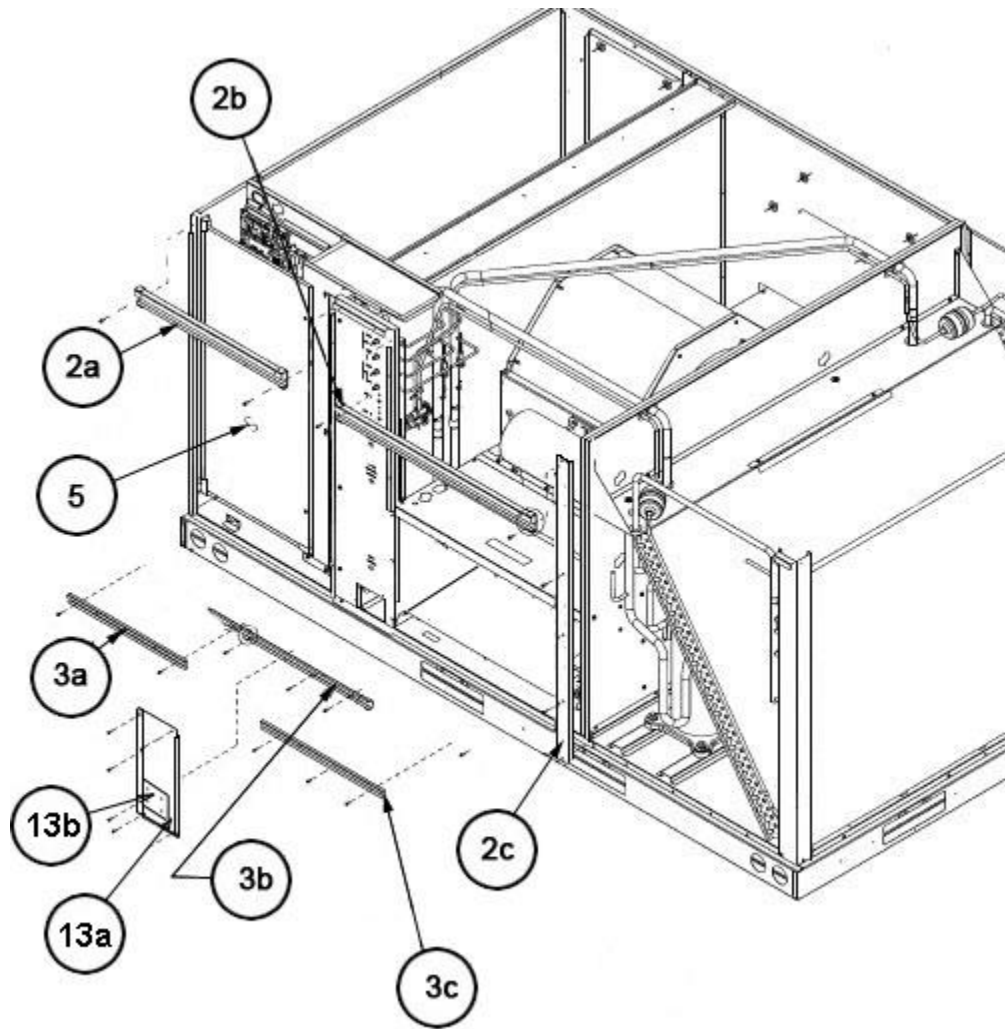
Interior - Front 120



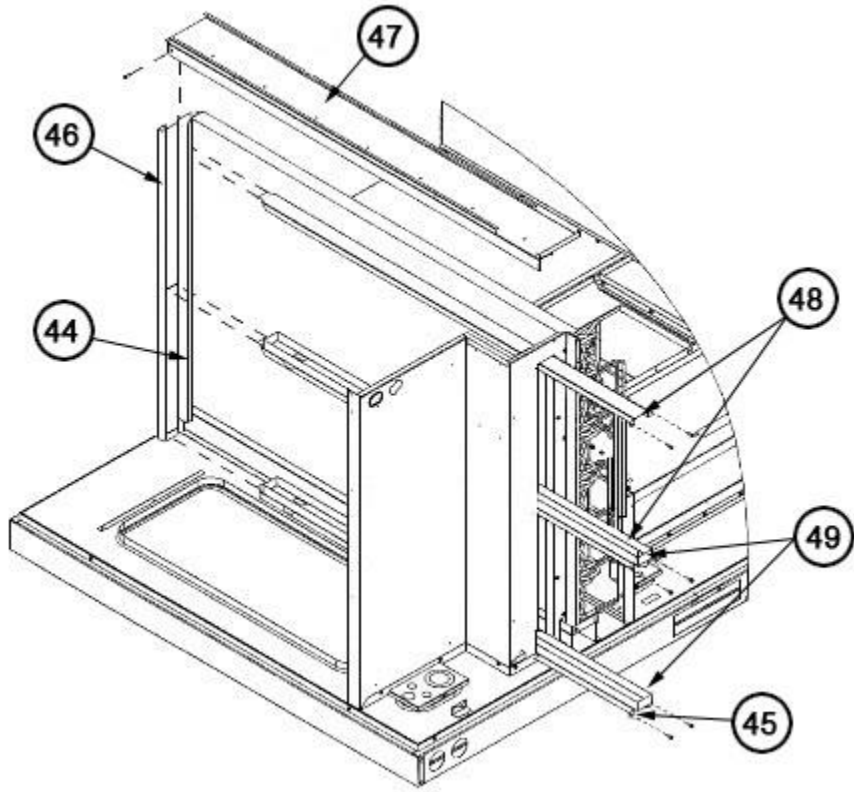
Filter-Coil Assembly 120



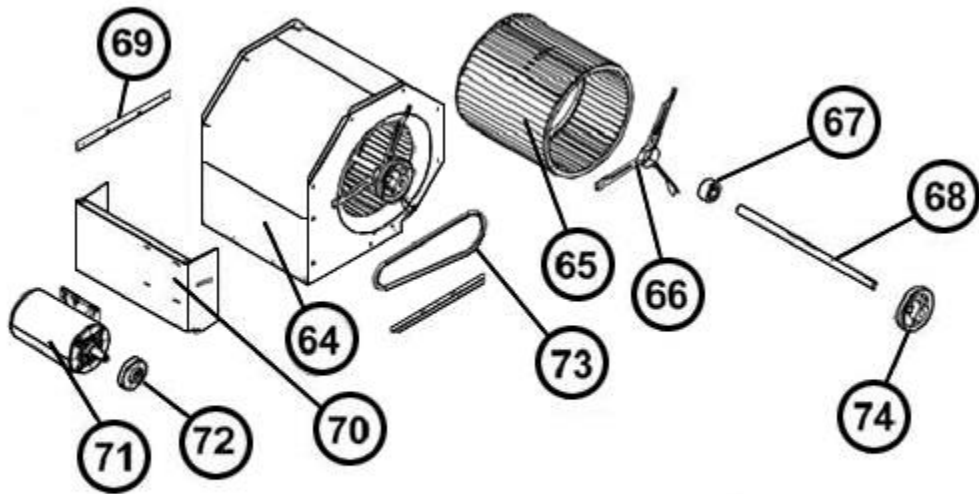
Condenser Coil Assembly 120



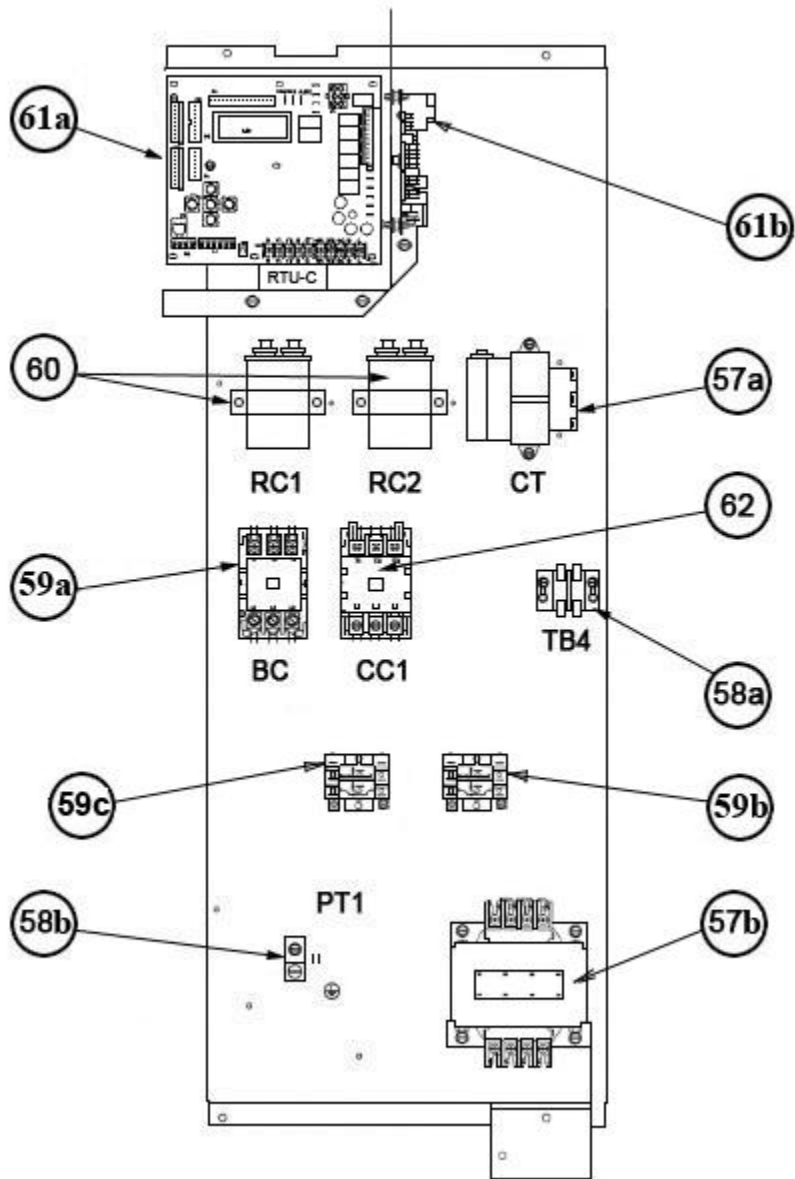
Front Panel Brackets 120



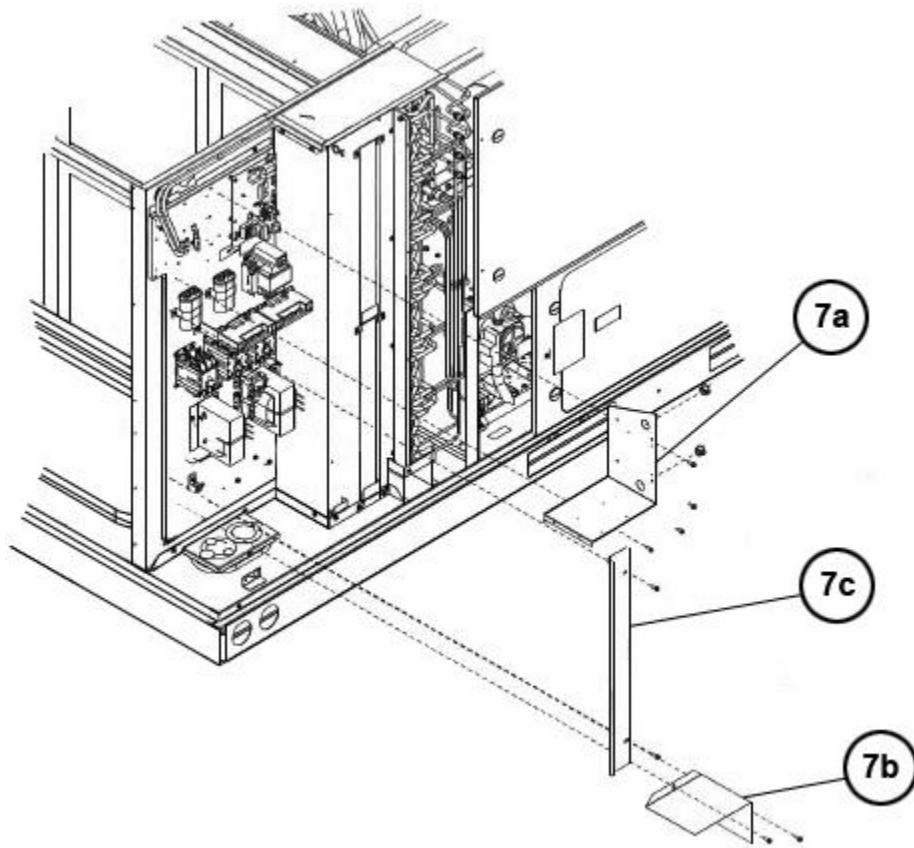
Filter Frame Assembly 120



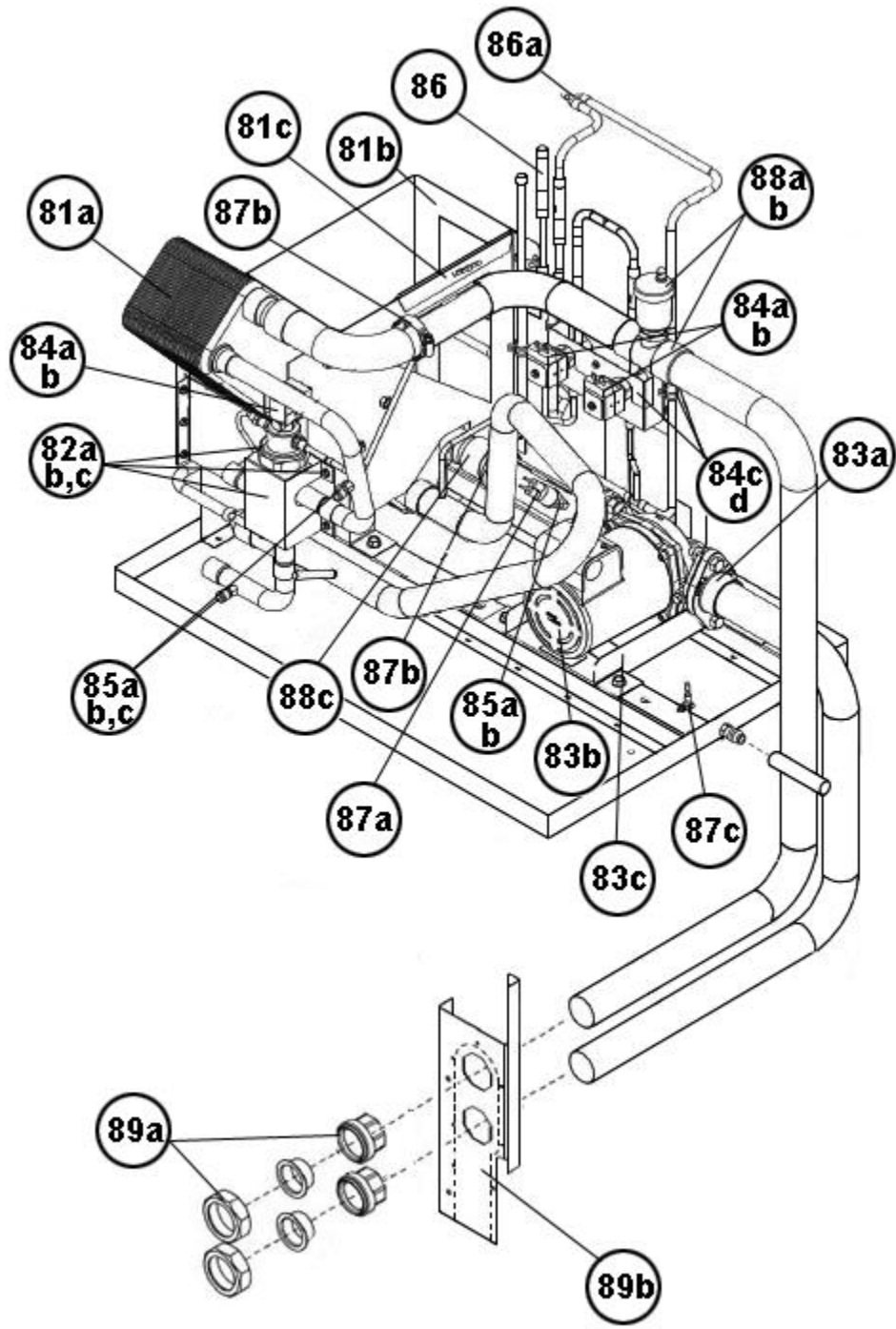
Blower Assembly 120



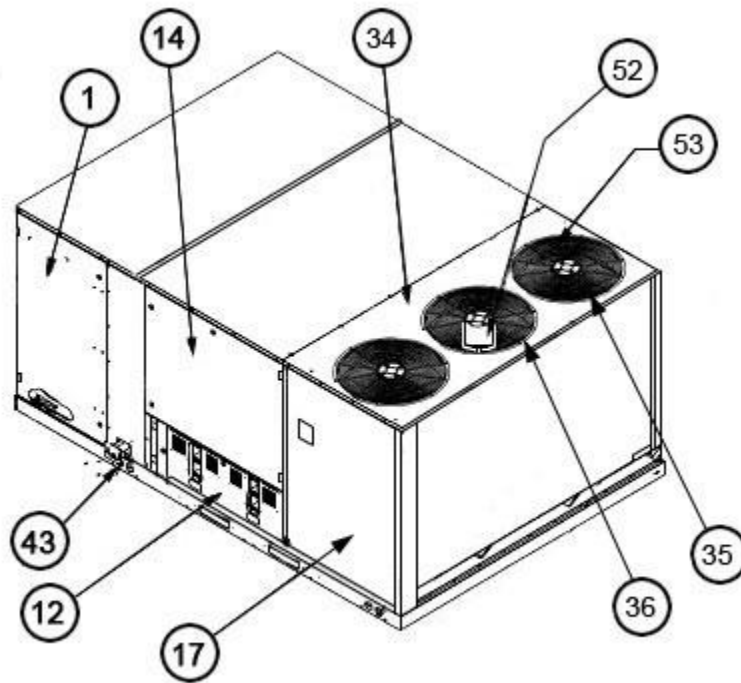
Control Box 120



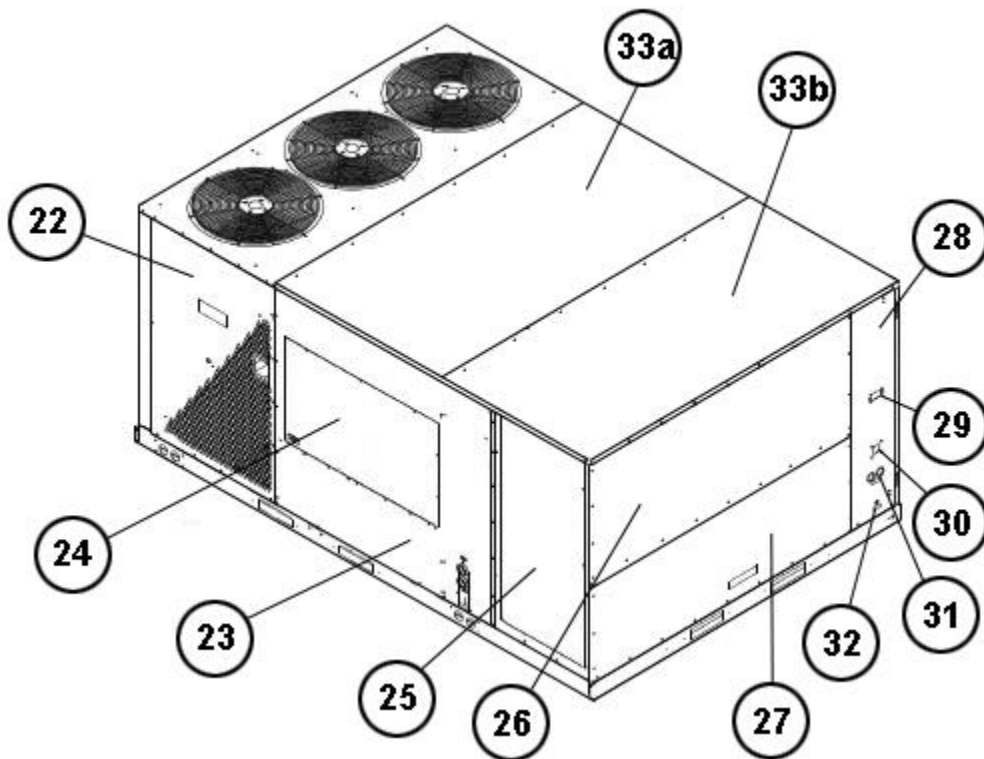
Low Voltage Shields 120



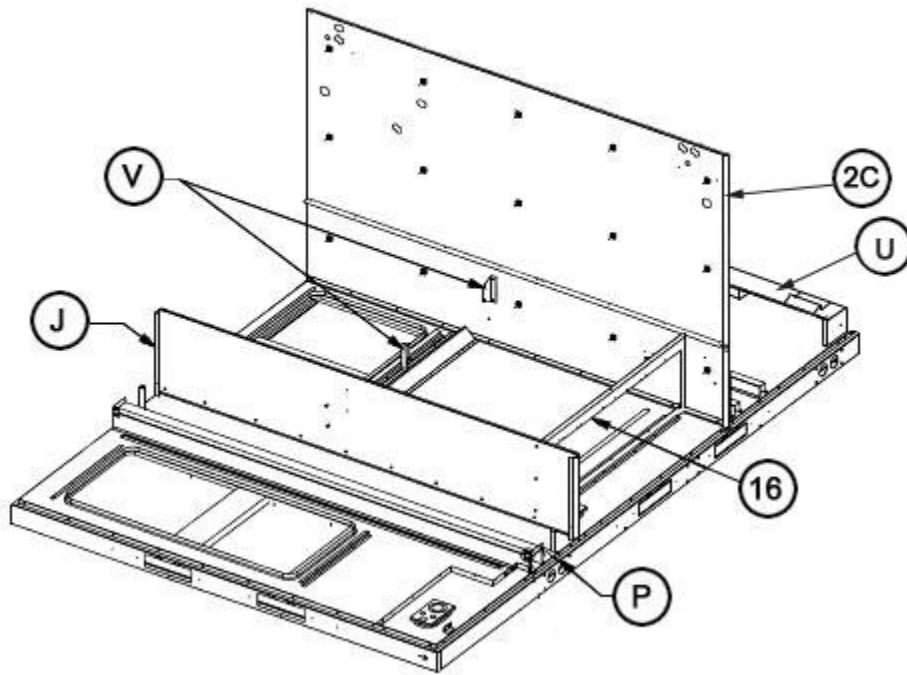
Hybrid Assembly 120



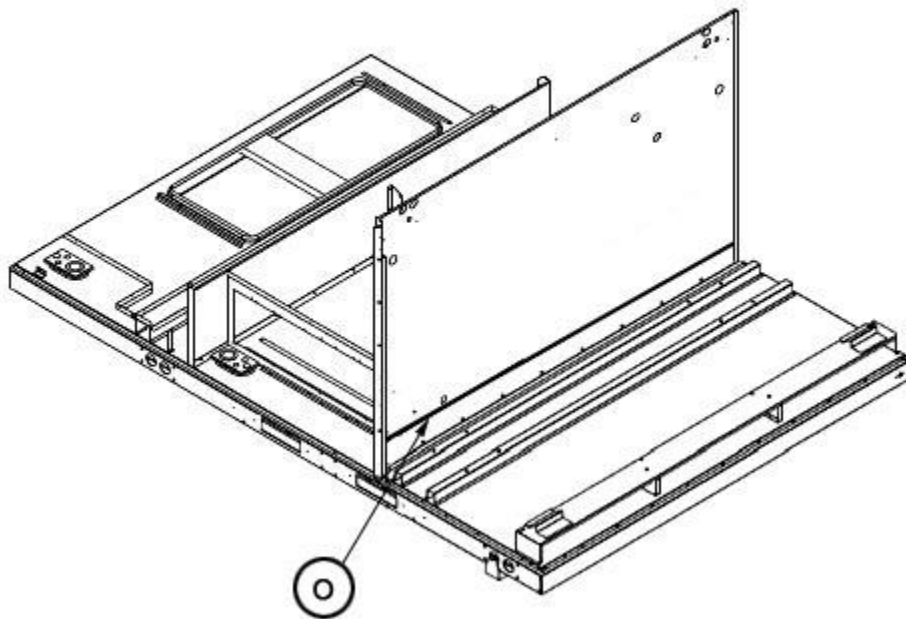
Exterior - Front 180



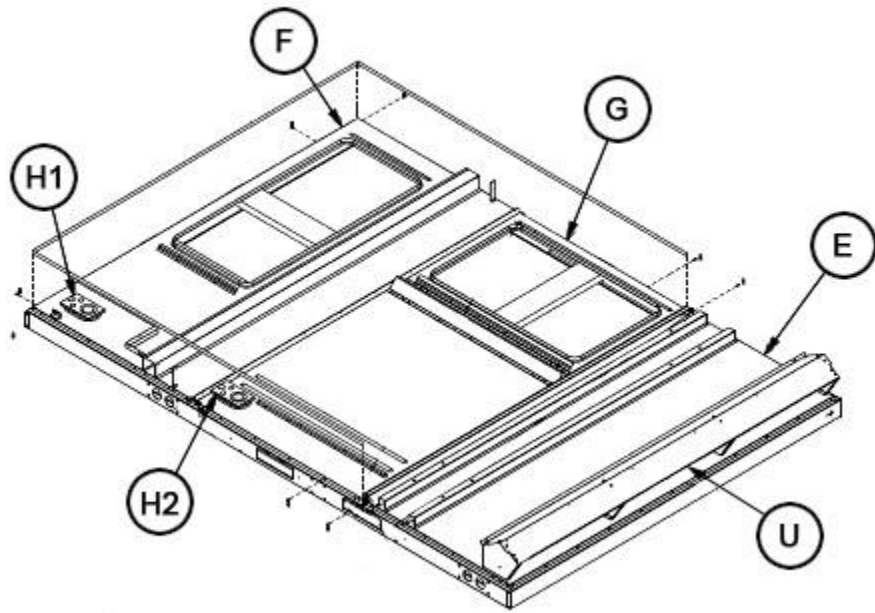
Exterior - Back 180



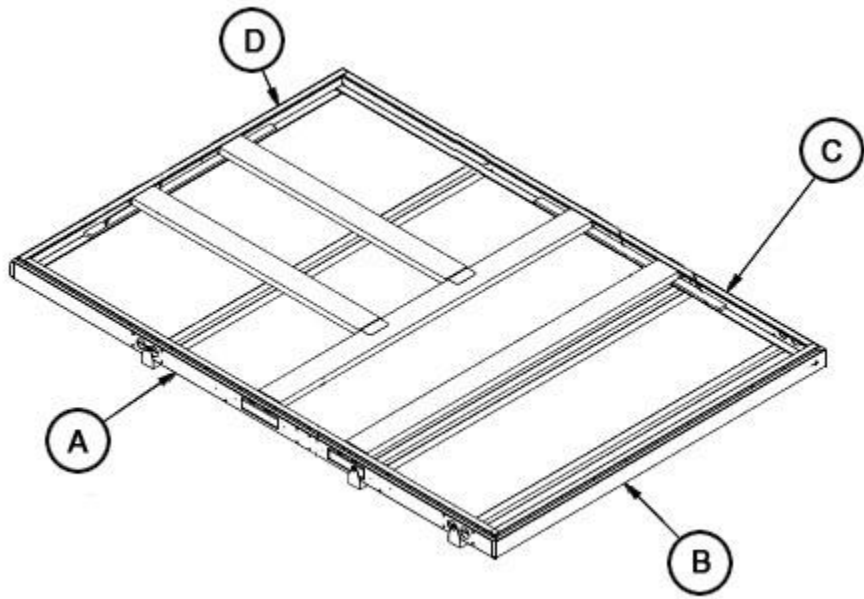
Heat Compartment 180



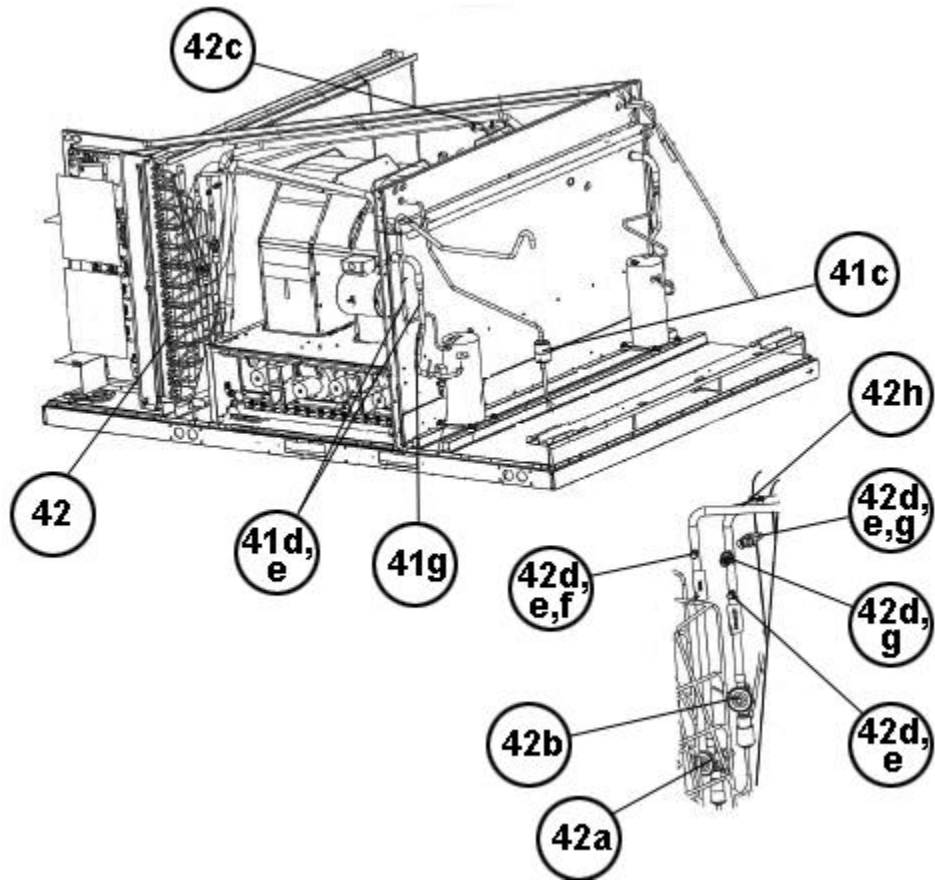
Condenser Bulkhead 180



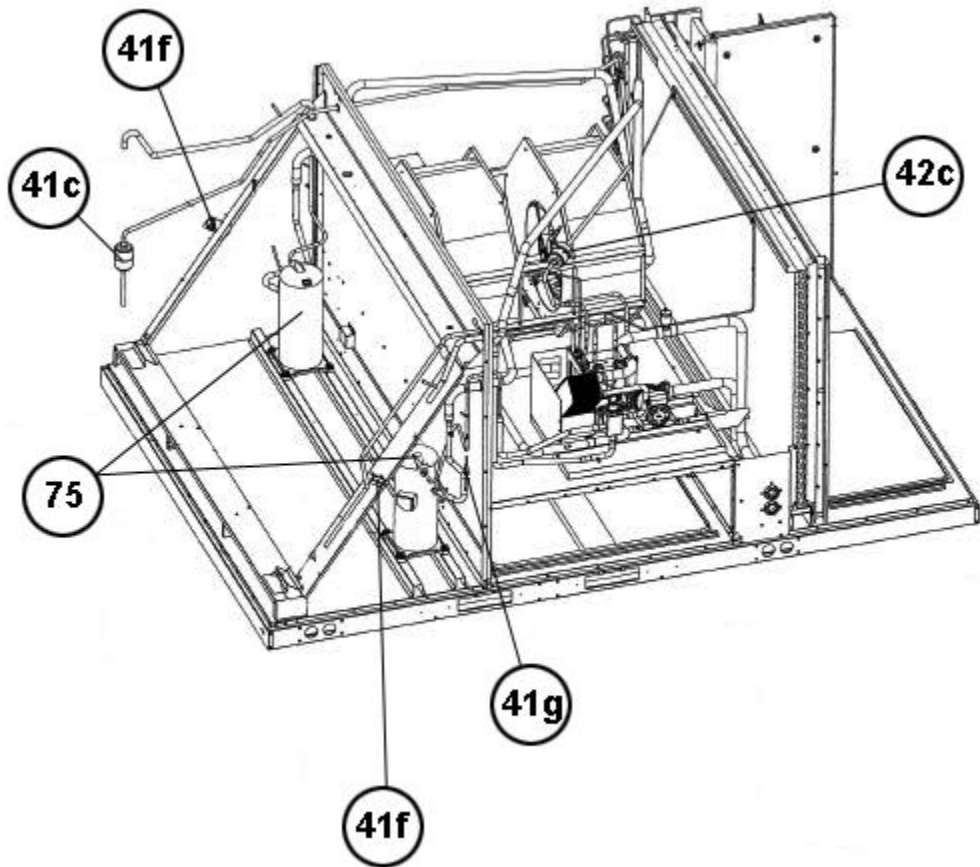
Base Pan Assembly 180



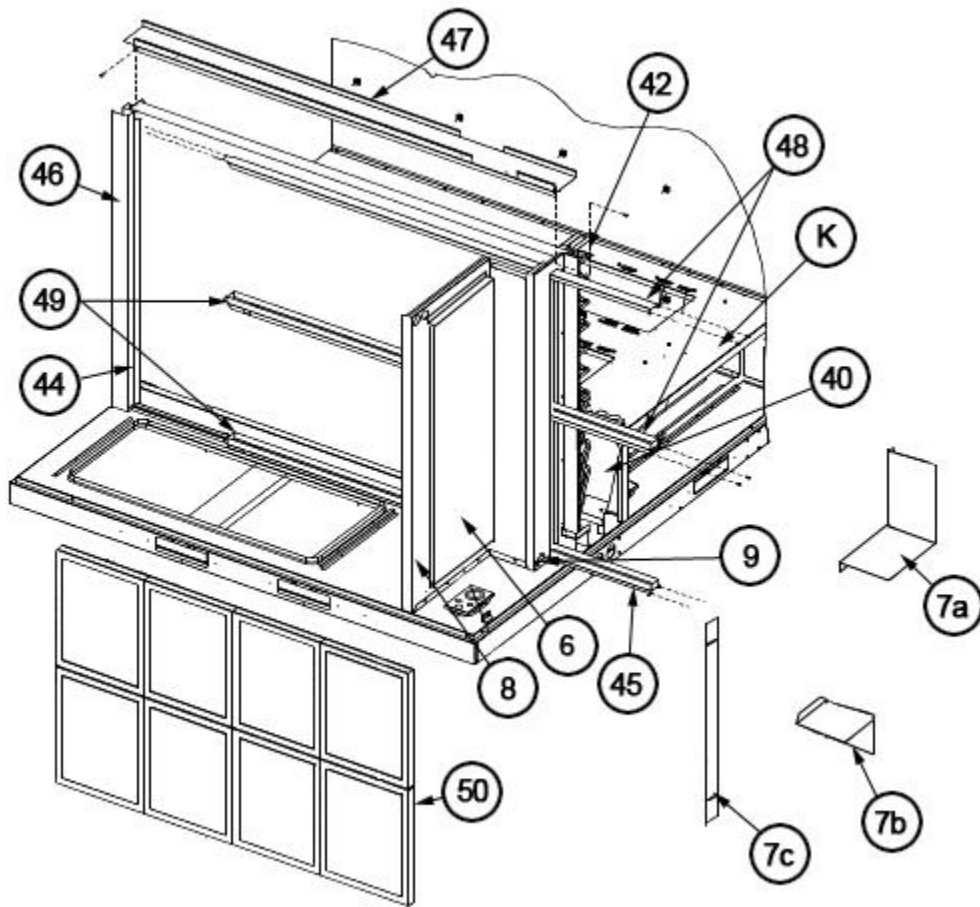
Base Rail Assembly 180



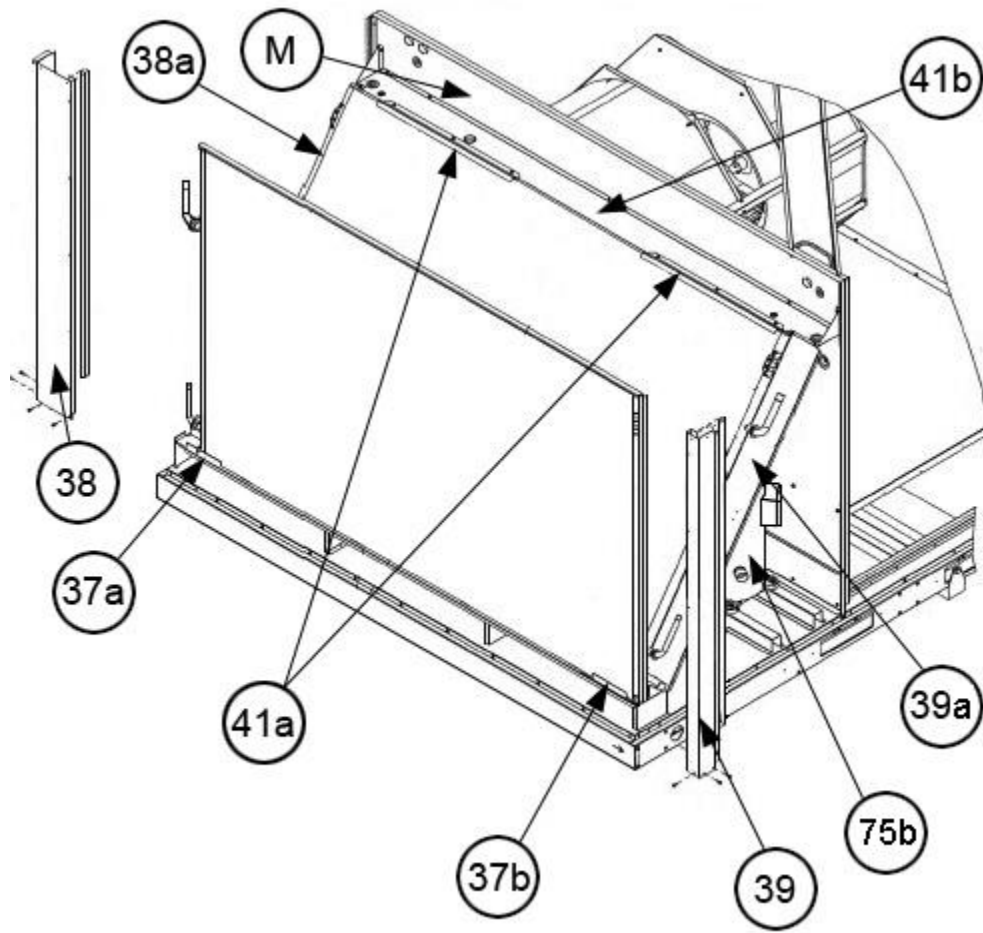
Interior - Front 180



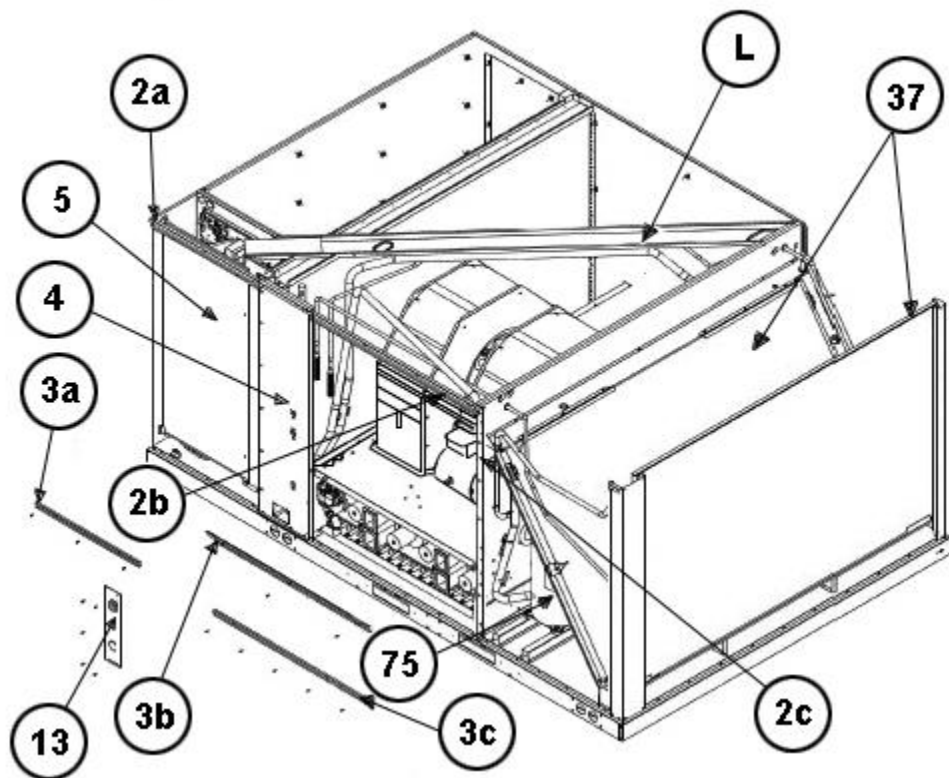
Interior - Back 180



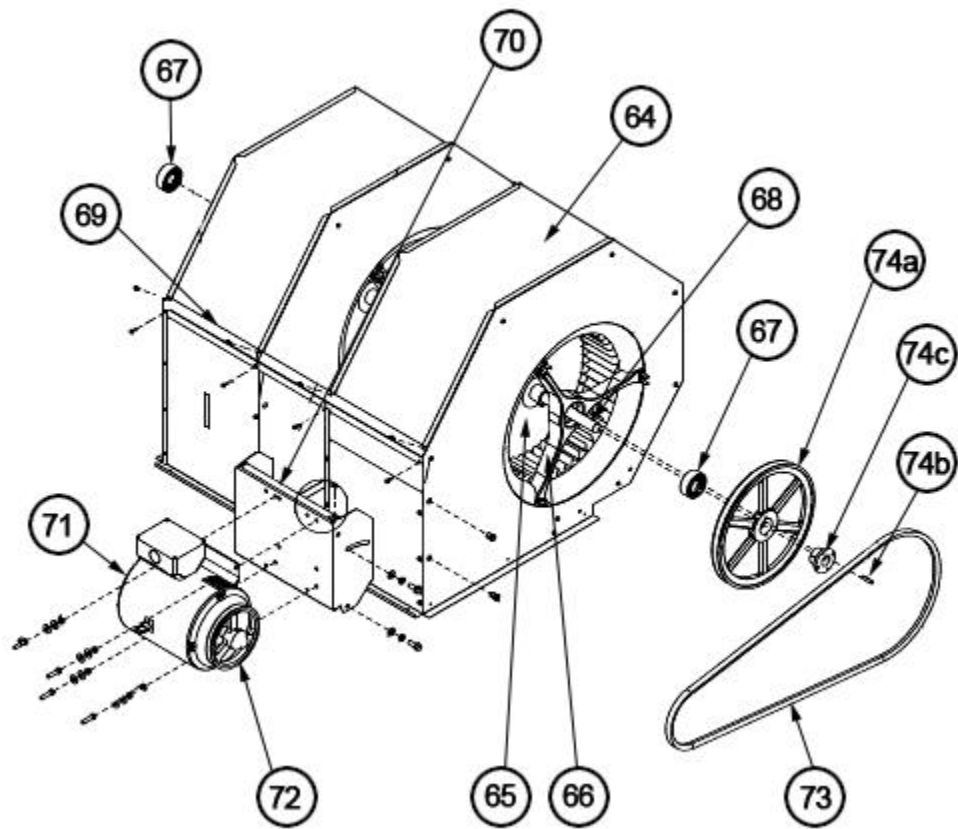
Filter Frame - Low Voltage Shields 180



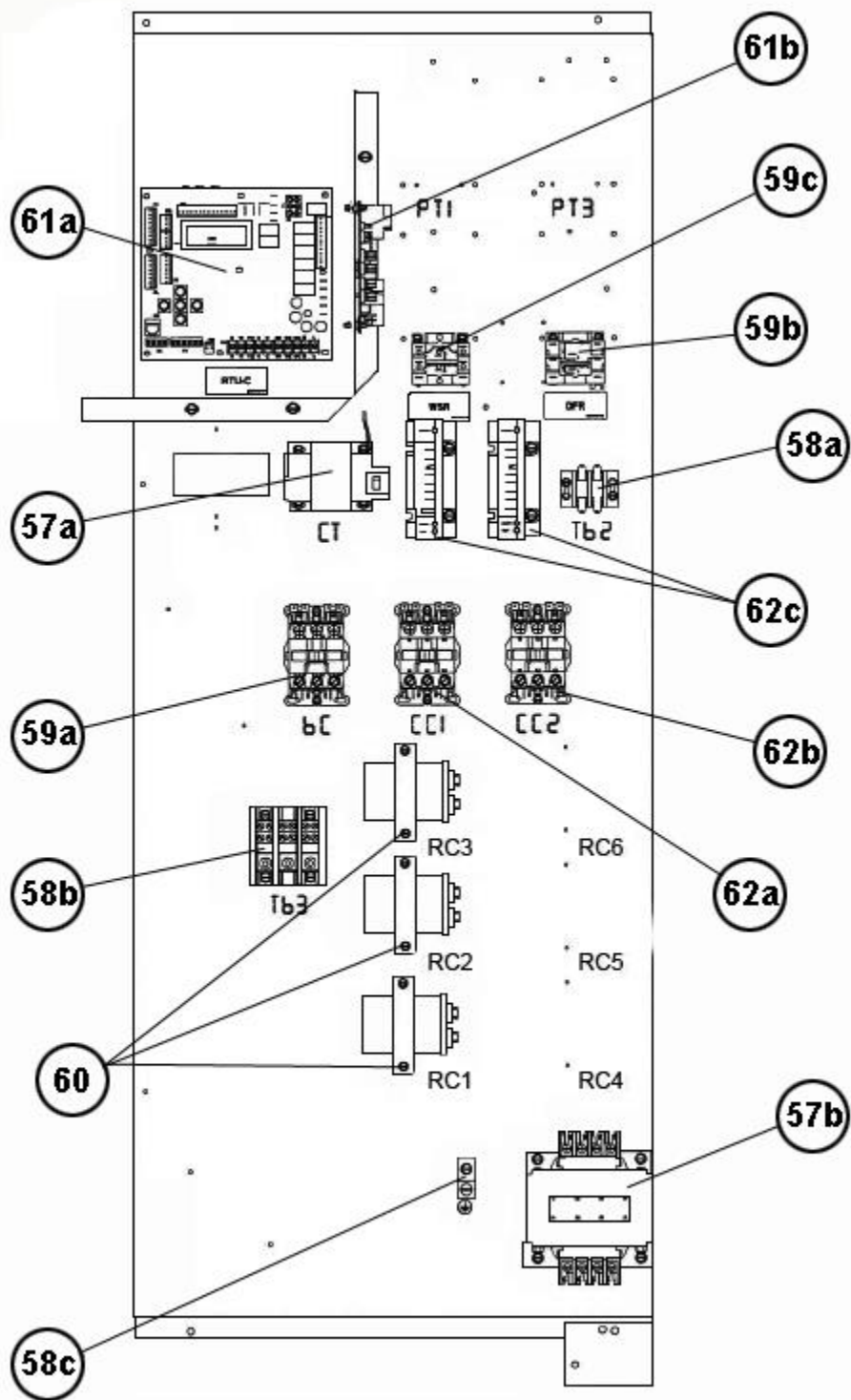
Condenser Coil - 180



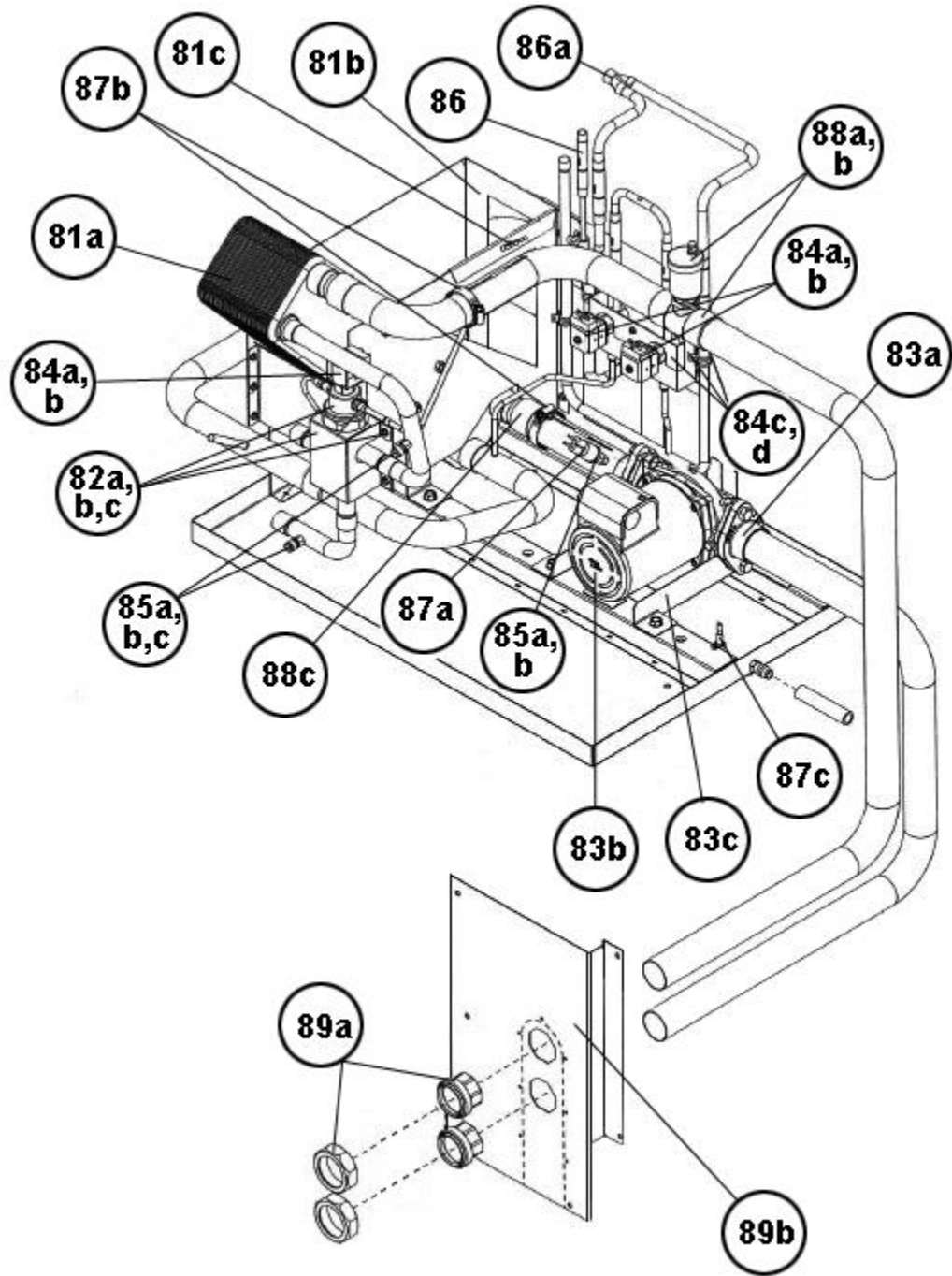
Front Panel Brackets 180



Blower Assembly 180



Control Box 180



Hybrid Assembly 180

NOTES

Stk It is recommended that stock be maintained for this part.
N/A Not Applicable

DISCLAIMER: This document is intended to provide general replacement parts information to aid qualified service personnel in the repair of these models. The complete Model and Serial Number of the unit under repair should be specified when selecting and ordering replacement parts. Specifications and illustrations are subject to change without notice. Document 92-42800-RLHL-D supersedes all previous parts lists for these models. See <http://www.rheempartslists.net/92-42800-RLHL-D> for the latest revision of this document. The manufacturer assumes no obligation for errors or omissions. Service personnel must verify the proper and safe operation of equipment after the replacement of any original components.