

OWNER'S MANUAL

ELECTRIC COUNTER TILTING ROUND SKILLET

R-1600E



MARKET FORGE
INDUSTRIES INC.
An Employee Owned Company

35 Garvey Street • Everett • MA • 02149-4403
Tel: (617) 387-4100 • Fax: (617) 387-4456 (MA)
Toll Free: (866) 698-3188 • Outside MA Fax: (800) 227-2659
Customer Service: custserv@mfi.com • Visit Us At: www.mfi.com

Form No. S-6000 • 03/07

TABLE OF CONTENTS

INSTALLATION

INSTALLATION	1
SERVICE CONNECTIONS	2
DIMENSIONS & SERVICE CONNECTIONS	2

OPERATION

OPERATING INSTRUCTIONS	3
THERMOSTAT SETTINGS	3

MAINTENANCE

PERIODIC CLEANING	3
ADJUSTMENTS	3

ILLUSTRATED PARTS LIST

ELECTRIC SKILLET EXPLODED VIEW	4
ELECTRIC SKILLET PARTS LIST	5

INSTALLATION

INSTALLATION:

1. Position unit on counter allowing sufficient rear clearance from wall to tilt freely and completely without obstruction.
2. Mark four corner locations of unit base, as shown in figure 1.
3. Remove unit from counter and locate position of four holes as per figure 1.
4. Apply a continuous bead of silastic or other equivalent sealant along the complete perimeter edge of the unit base.
5. Use 5/16-18 hex cap screws with suitable flat washers to bolt down. Screw length must be 1 1/4" long plus counter top thickness.
6. Wipe off excess sealant.
7. A control box with power supply equivalent to electrical rating of appliance should be located conveniently

8. nearby.
8. A waterproof electrical connection for power supply to console housing must be provided.
9. Ground unit to terminal provided inside console housing.
10. Turn power on and check for proper operation.

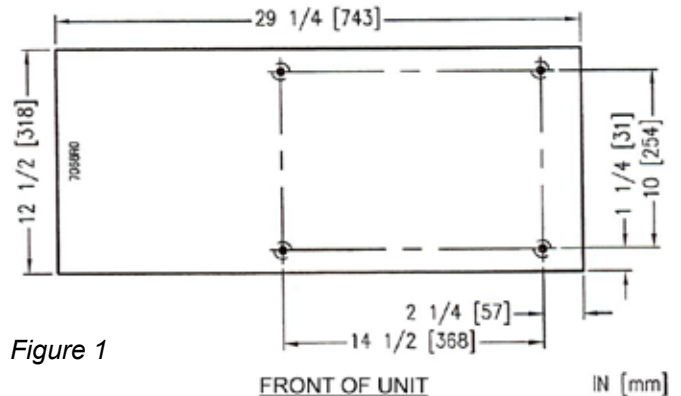


Figure 1

OPERATION

OPERATING INSTRUCTIONS:

- Insure that the unit has been electrically connected and that circuit breakers are on.
- Place power switch to on position.
- Set the thermostat dial to high (#10).
- Preheat the unit and allow it to cycle thus equalizing that across the entire surface.
- Cooking should be done at various temperature settings on the dial as determined by the user.
- Water will boil faster with the use of the optional cover.
- At end of cooking cycle return thermostat to off, turn power switch off and remove food. Put a small amount of water in the pan and allow to soak for ease of cleaning.

THERMOSTAT SETTINGS:

Simmering	1-4	200°F
Sautéing	5-6	225-27°F
Searing	7-8	300-350°F
Pan Frying	8-9	325-375°F
Grilling	9-10	350-425°F

CAUTION:

When tilting pan to remove contents take care not to tilt too far too fast as contents are hot and may splash on the operator causing injury.

MAINTENANCE

PERIODIC CLEANING:

NOTICE:

Contact the factory, a factory representative or local service company to perform maintenance and repairs

As a safety precaution, disconnect the power during cleaning and servicing.

CAUTION:

Do not use cleaning agents that are corrosive.

The gas fired round tilting skillet should be cleaned after each use.

1. Keep exposed cleanable areas of unit clean at all times.
2. Thoroughly wash pan and lid. if necessary soak

pan to remove product that is stuck to pan surface. Use mild detergent and clear warm water.

3. Clean around burner air mixer and orifice if lint has accumulated. Bottom cover must be removed to clean this area.
4. Rinse entire unit and dry. Do not get water in electrical box or any other electrical component.

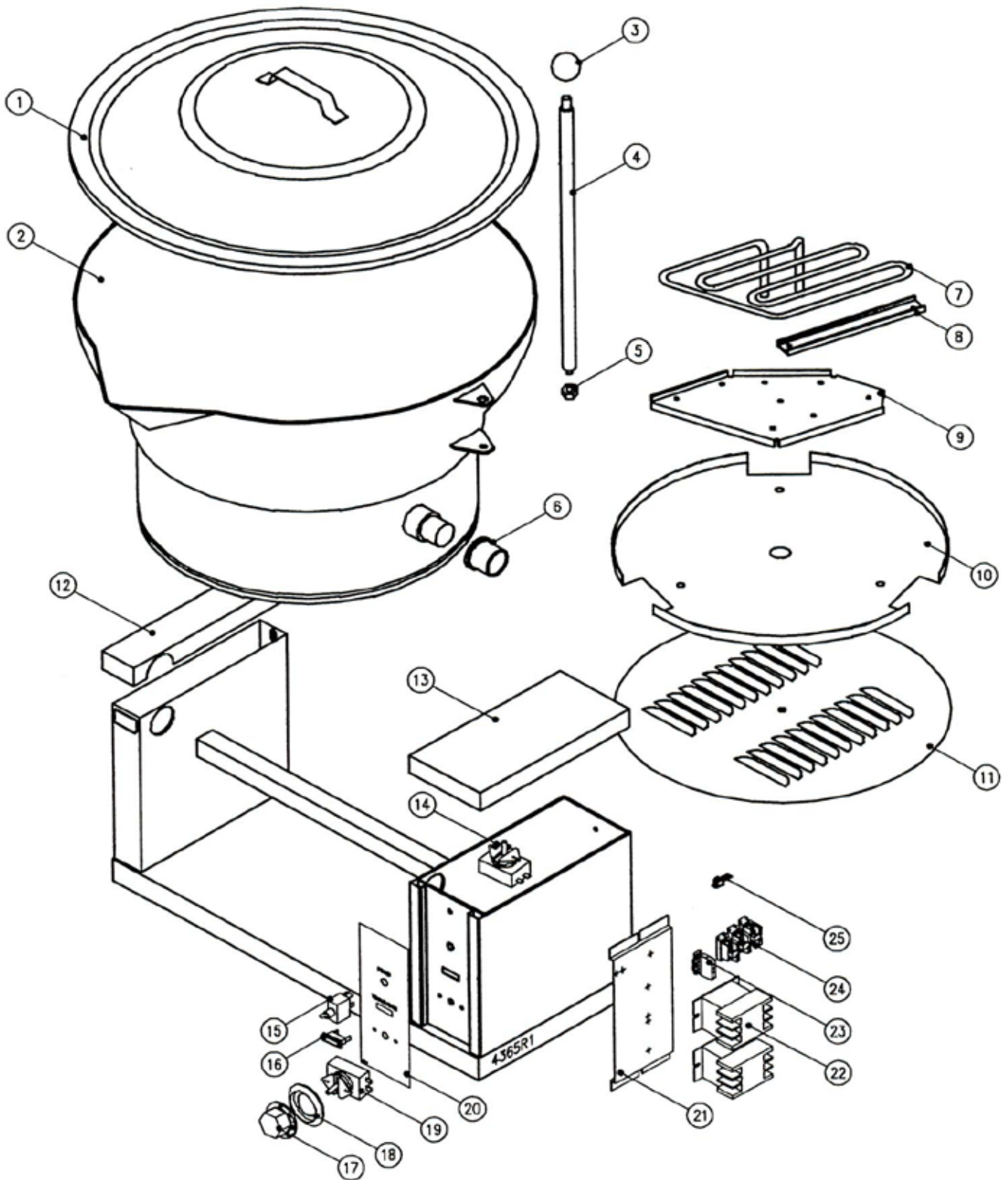
ADJUSTMENTS:

WARNING:

At least twice a year, have an authorized service person clean and adjust the unit for maximum performance.

All units are adjusted at the factory. In case of problems in operation at initial installation, check type of gas and manifold pressure and compare it with information on rating plate.

ILLUSTRATED PARTS LIST



ILLUSTRATED PARTS LIST

ITEM	PART NO.	DESCRIPTION	QTY.
1	97-5995	COVER ASSEMBLY	1
2	97-5996	PAN ASSEMBLY	1
3	97-5337	KNOB, RED	1
4	97-5778	HANDLE	1
5	97-5116	ACORN NUT	1
6	97-5997	BEARING	2
** 7	97-5998	ELEMENT, 2.5 KW, 208V	3
	97-5999	ELEMENT, 2.5 KW, 220V (380V)	3
	97-6000	ELEMENT, 2.5 KW, 240V (415V)	3
	97-6001	ELEMENT, 2.5 KW, 277V (480V)	3
8	97-6002	CAPILLARY CLAMP	1
9	97-6003	ELEMENT CLAMP	1
10	97-6004	INSULATION PAN	1
11	97-6005	BOTTOM COVER	1
12	97-6006	LEFT HAND CONSOLE COVER	1
13	97-6007	RIGHT HAND CONSOLE COVER	1
14	97-5642	HI-LIMIT THERMOSTAT	1
15	97-6008	POWER SWITCH	1
16	97-5419	PILOT LIGHT, AMBER	1
** 17	97-5786	DIAL, F	1
	97-5787	DIAL, C	1
18	97-5012	BEZEL	1
19	97-5107	THERMOSTAT	1
20	97-6009	OPERATING DECAL	1
21	97-5846	COMPONENT MOUNTING PLATE	1
** 22	97-5609	CONTACTOR - 280, 220, 240V	1
	97-5609	CONTACTOR - 220/380, 240/415, 480V	1
23	10-6962	TERMINAL BLOCK, END SECTION	1
24	10-6963	TERMINAL BLOCK, 208, 240, 480V	3
	10-6963	TERMINAL BLOCK - 240/415, 220/380V	4
25	97-5052	GROUND LUG	1
** 26 *	97-5616	TRANSFORMER - 380/220, 480/240,V, 50/60 Hz, 100VA	1
	97-5613	TRANSFORMET - 480/240V, 60 Hz, 100VA	1
** 27 *	97-6010	FUSE, 600V, 1 AMP - 380, 415, 480V UNITS	2
28 *	97-5359	FUSE HOLDER	2

* NOT SHOWN.

** SELECT AS REQUIRED.