

Quality Industries Breader

Step-by-step Assembly Instructions



Pulley Bill of Materials

900181 Pulley, 1 x 5 Sifter

902232 Screw, Set SS 5/16-18 x 1/2

Bearing (2x)



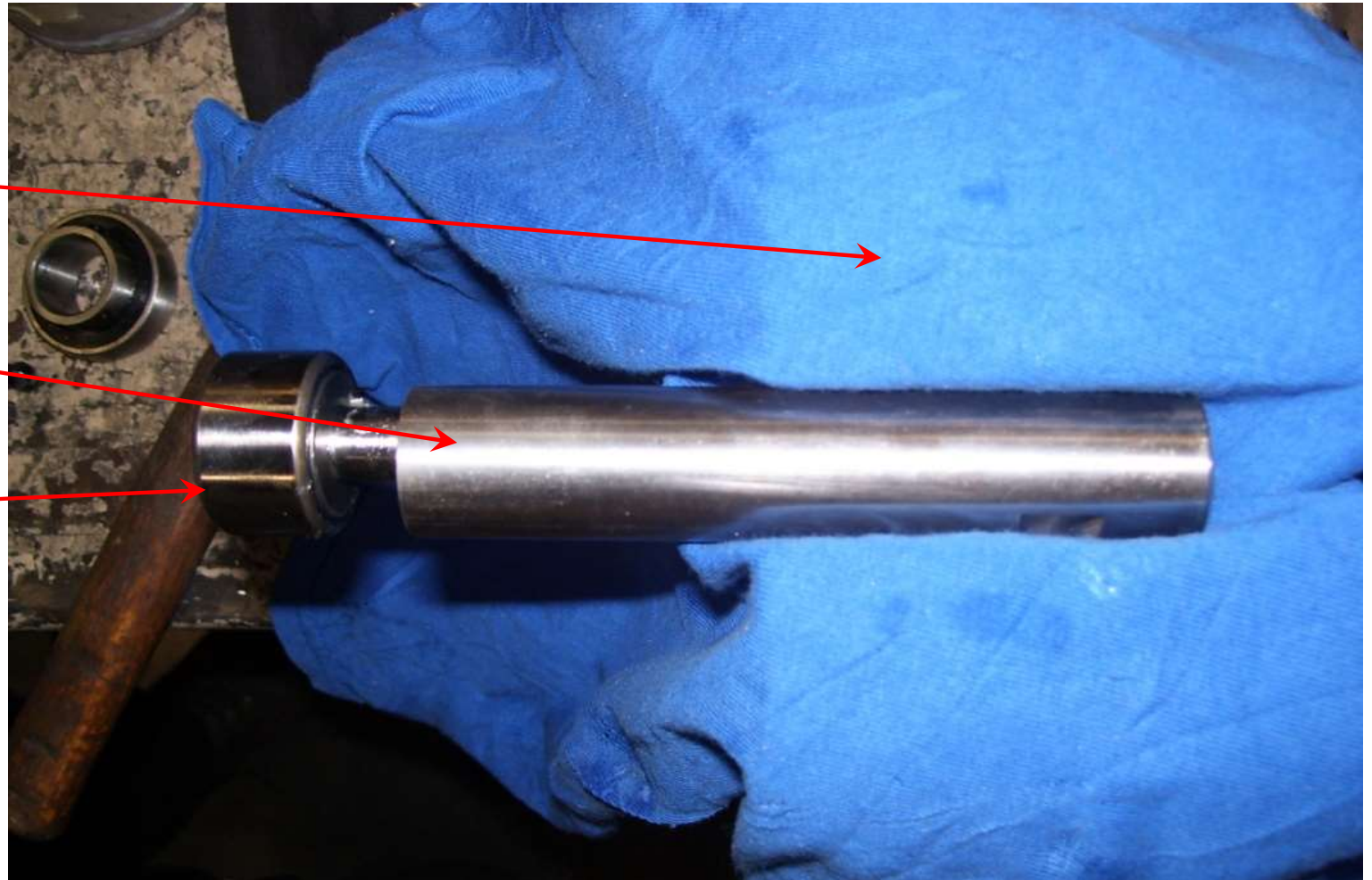
Pulley Assembly

Tabletop Vise with rag to prevent marring on the shaft.

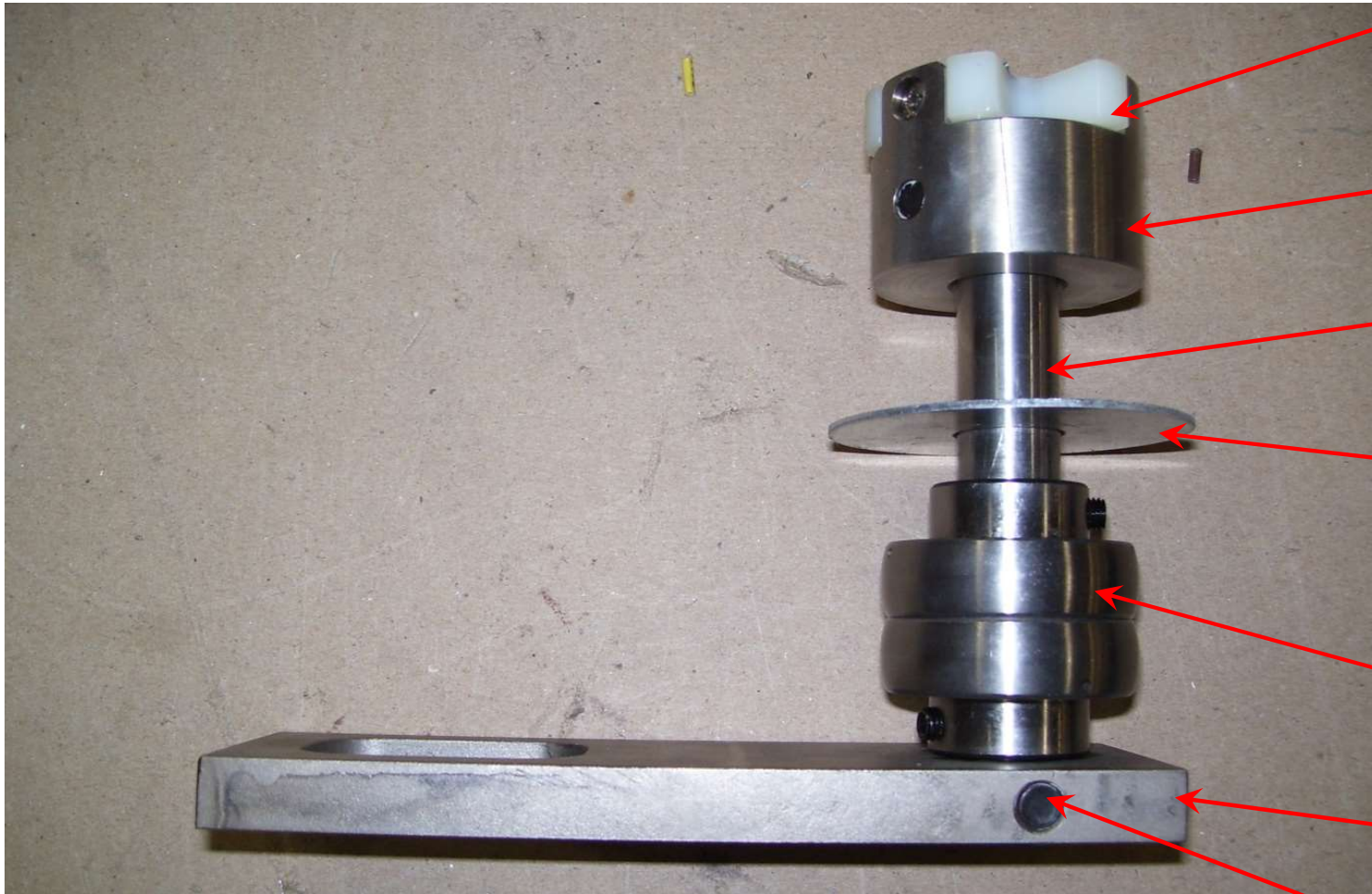
200483 Shaft, 1” Sifter CAM

900186 Bearing CAM Follower

Tighten the Bearing (**900186**) on the Shaft (**200483**) with an Allen wrench.



Coupling Assembly



900776 Bearing,
Breader Spider
Nylon 1/2 x 2-1/8

-
200484 Shaft, 3/4"
Sifter Coupling

201306 Washer, Flat
Galv. 3/4 ID x 2-5/8
OD

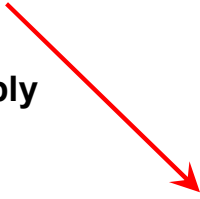
900042 Bearing (2x)
Pillow Block 3/4"
Bore

200482 Plate, CAM

Pin _____

Coupling Mounting

Coupling Assembly
completed in
previous step



900042-1 (2x)
Housing Pillow
Block, Inner

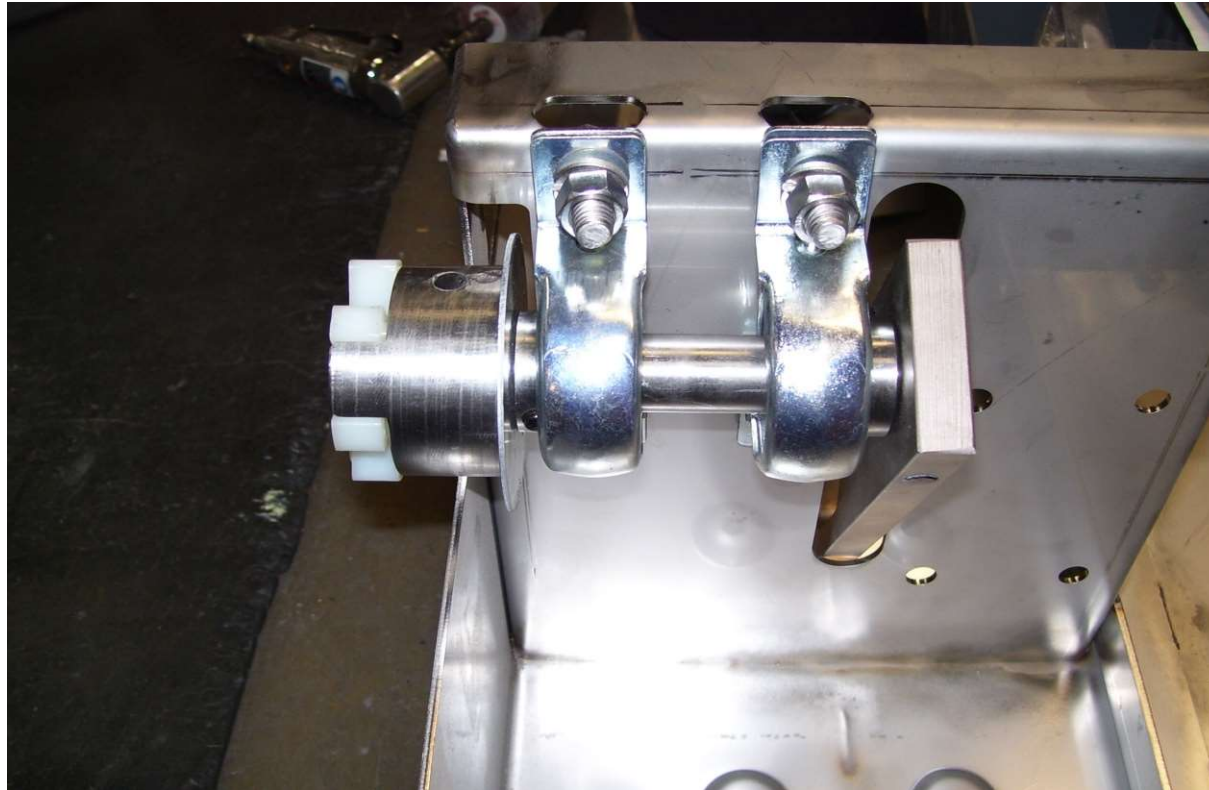
900042-1 (2x)
Housing Pillow
Block, Outer

902460 (4x) Nut Hex,
SS 3/8-16

201230 Frame

902461 (4x) Bolt
Hex, SS 3/8-16

902459 (4x) Washer
Split Lock, SS 3/8



Tighten 3/8" Bolts
with 9/16" Socket on
Impact Gun and
9/16" Wrench

Rotate and check
for clearance

Tighten all (8) set
screws on all (4)
bearings using a
1/8" Allen wrench

Pulley Mounting

Bearing Assembly
completed in
previous step



900784-1 Housing
Pillow Block, Inner

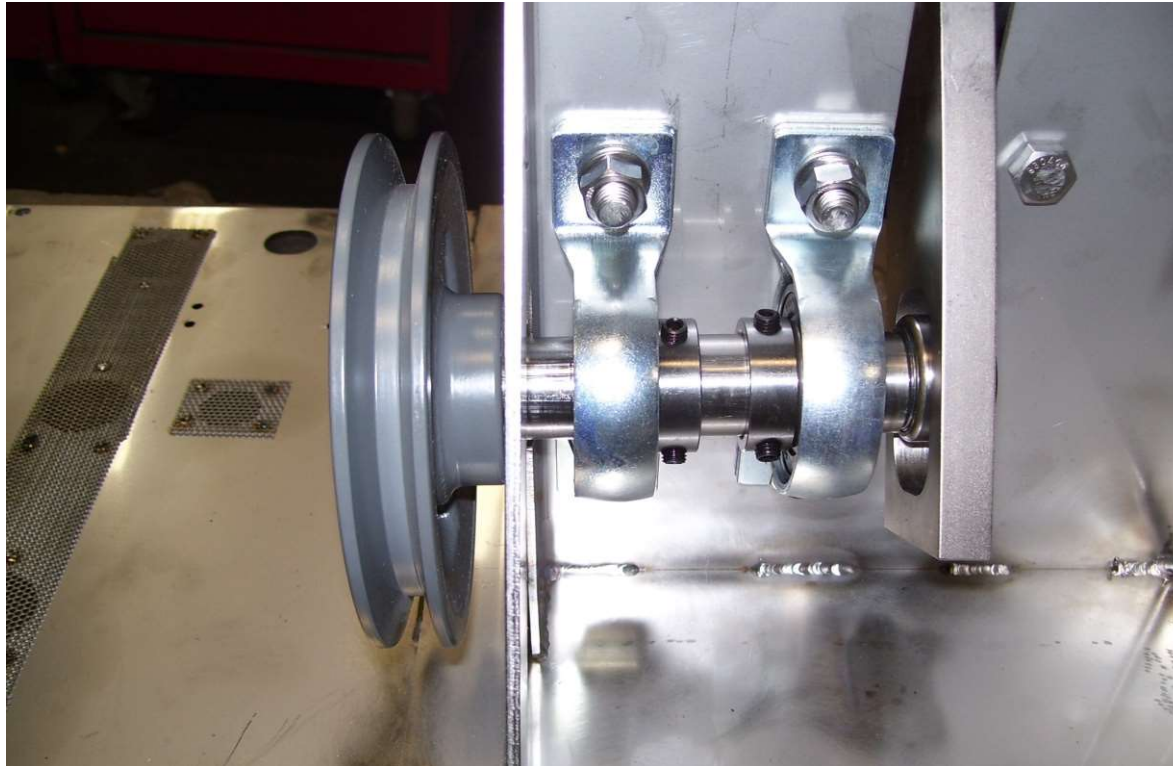
900784-1 Housing
Pillow Block, Outer

902460 Nut Hex, SS
3/8-16

201230 Frame

902461 Bolt Hex, SS
3/8-16 x 1 long

902459 Washer Split
Lock, SS 3/8



Tighten 3/8" Bolts
with 9/16" Socket on
Impact Gun and
9/16" Wrench.

Rotate and check
for clearance.

Motor Dis-Assembly

Power Cord Wire

900184 Motor, 1/4 hp

Separate the motor mount from the motor by removing the two end clamps

Remove the ground on the motor by snipping off with side cut snips



Pulley Assembly



902449 Nut Hex, SS
5/16-18

902451 Washer Flat,
SS 5/16

902456 Bolt Hex, SS
5/16-18 x 5/8 long

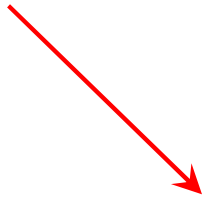
902450 Washer Split
Lock, SS 5/16



**Align the motor
mount with the
holes in the
weldment as shown.**

**Tighten 5/16" Bolts
with 1/2" Socket on
Impact Gun and 1/2"
Wrench.**

900184 Motor, 1/4 hp Pulley Assembly



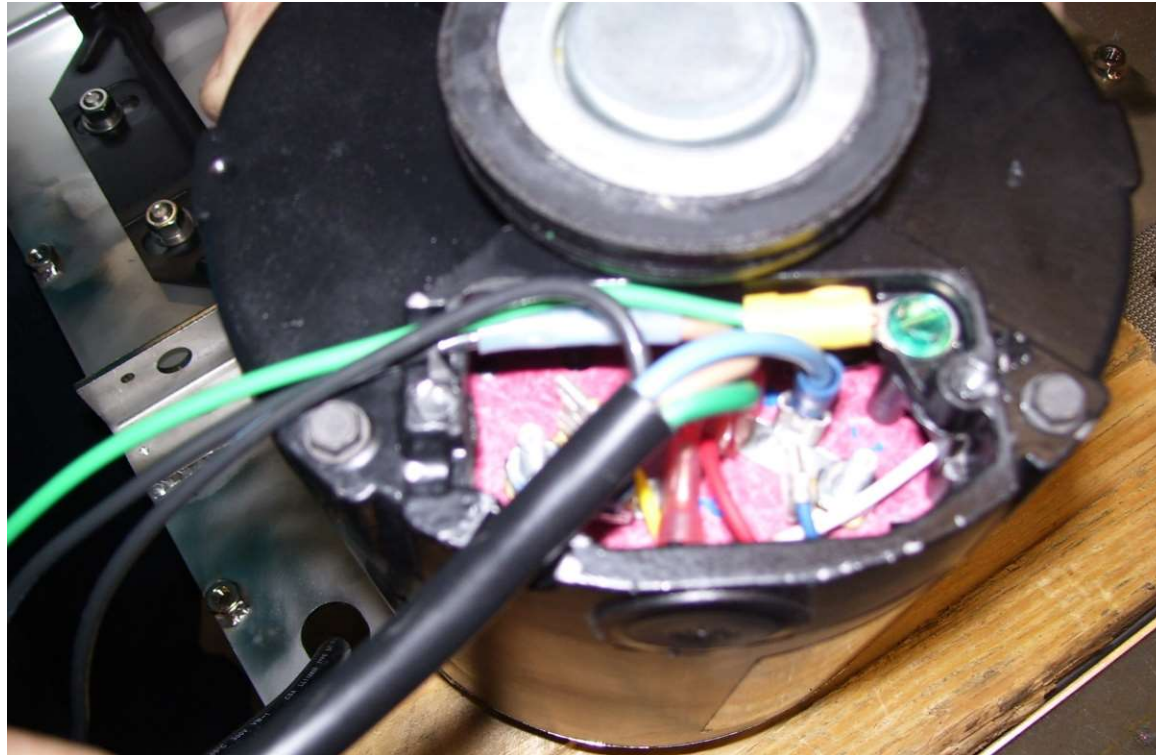
Power Cord Wire

902449 Nut Hex, SS
5/16-18

902451 Washer Flat,
SS 5/16

902456 Bolt Hex, SS
5/16-18 x 5/8 long

902450 Washer Split
Lock, SS 5/16



Tighten 5/16" Bolts
with 1/2" Socket on
Impact Gun and 1/2"
Wrench

900184 Pulley Assembly Motor, 1/4 hp



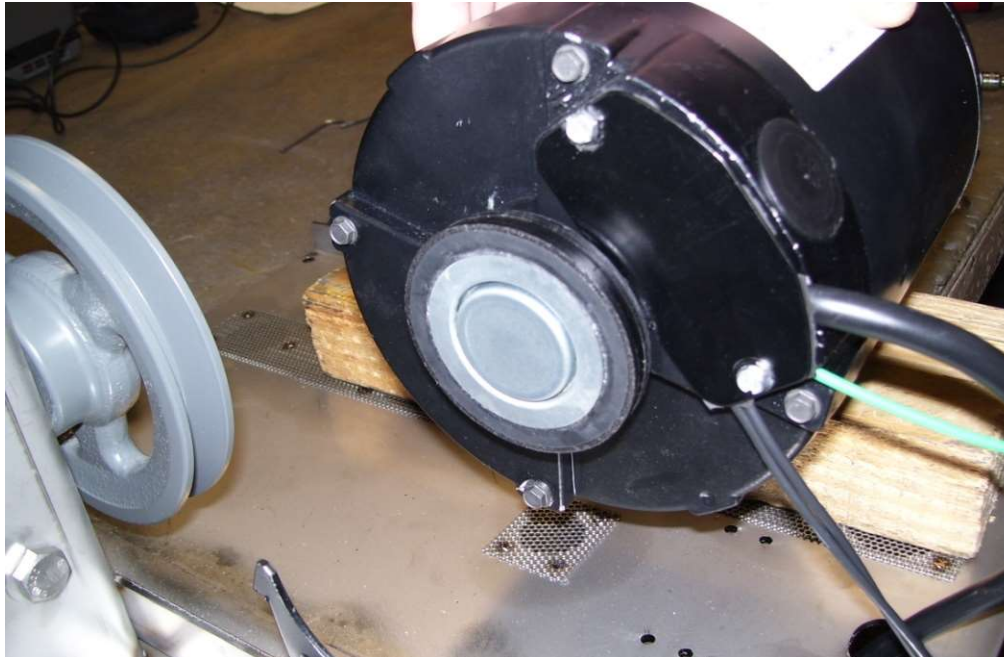
Power Cord Wire

902449 Nut Hex, SS
5/16-18

902451 Washer Flat,
SS 5/16

902456 Bolt Hex, SS
5/16-18 x 5/8 long

902450 Washer Split
Lock, SS 5/16



**Tighten 5/16" Bolts
with 1/2" Socket on
Impact Gun and 1/2"
Wrench**

Motor Assembly

900184 Motor, 1/4 hp

Tighten Motor Mounts (2x) with 5/16 nut driver on 1/4 pneumatic impact

900182 Pulley, Motor 1/2 x 2, Sifter. Be sure to tighten set screw.

900183 V-Belt, 1/2 x 23 Sifter

Power Cord Wire

902449 Nut Hex, SS 5/16-18

902451 Washer Flat, SS 5/16

902456 Bolt Hex, SS 5/16-18 x 5/8 long

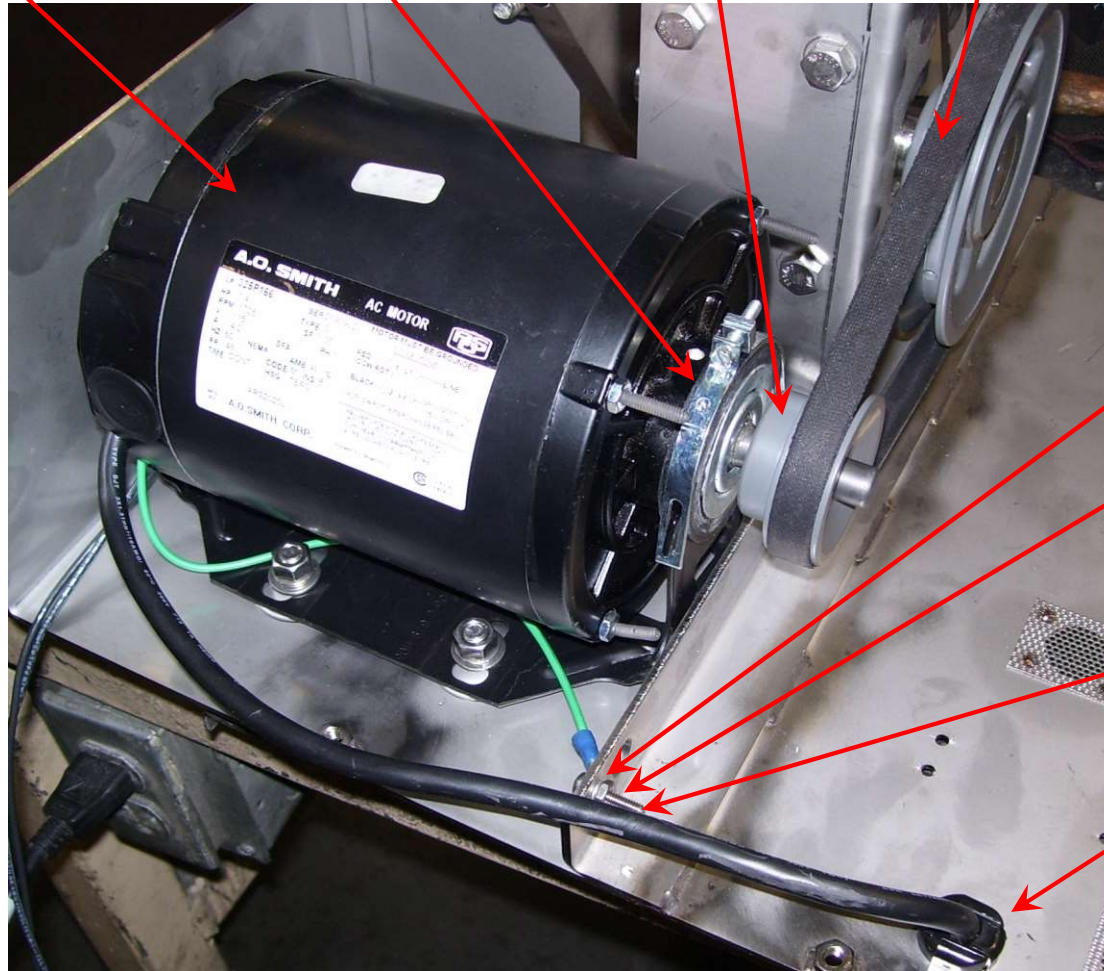
902450 Washer Split Lock, SS 5/16

902458 Washer Split Lock, SS 3/16

902460 Nut Hex, SS 8-32

900086 Screw PH Pan Head, SS 8-32 x 3/4 long

900053 Bushing, Elect. Restrainer



Power Cord Wire