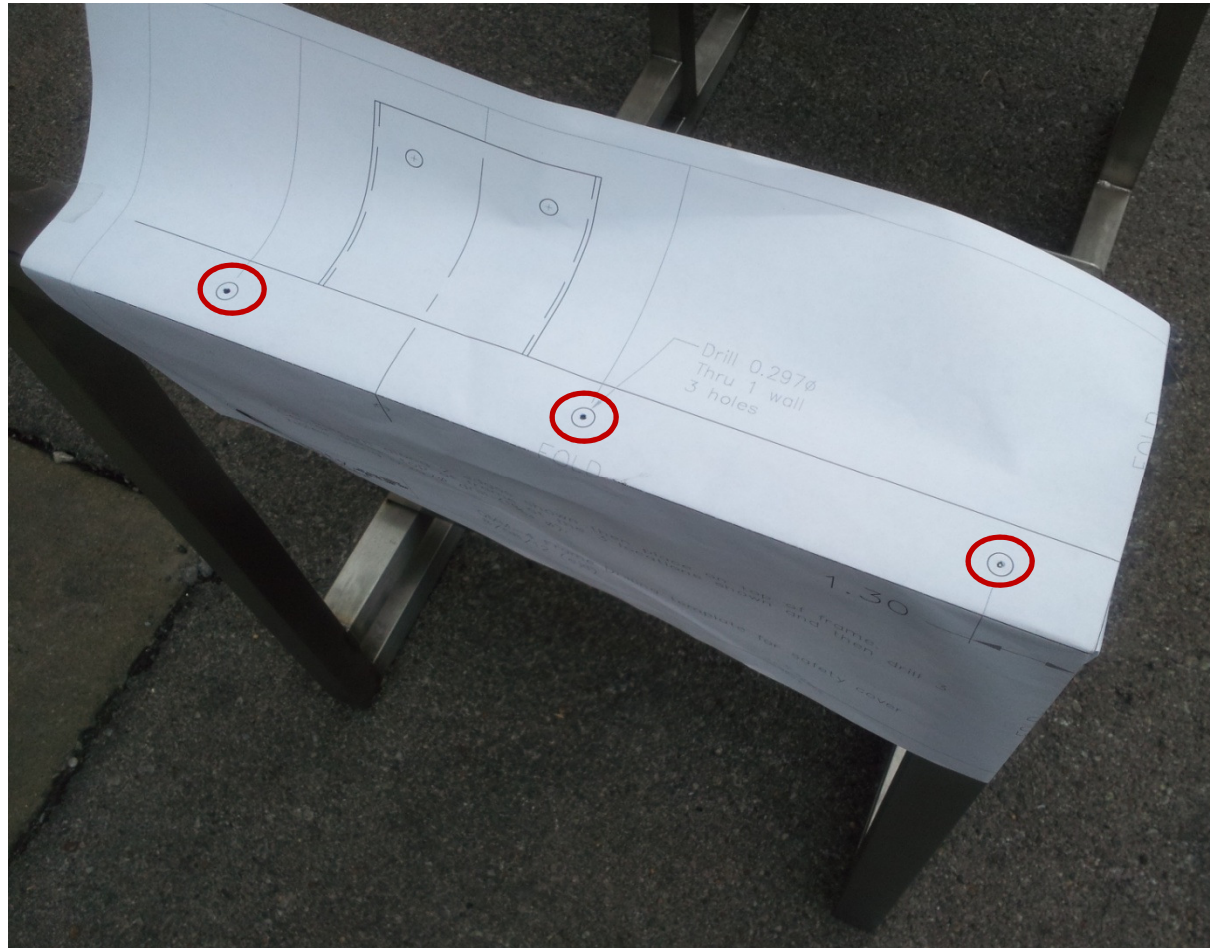


FMA015RC Assembly Instructions

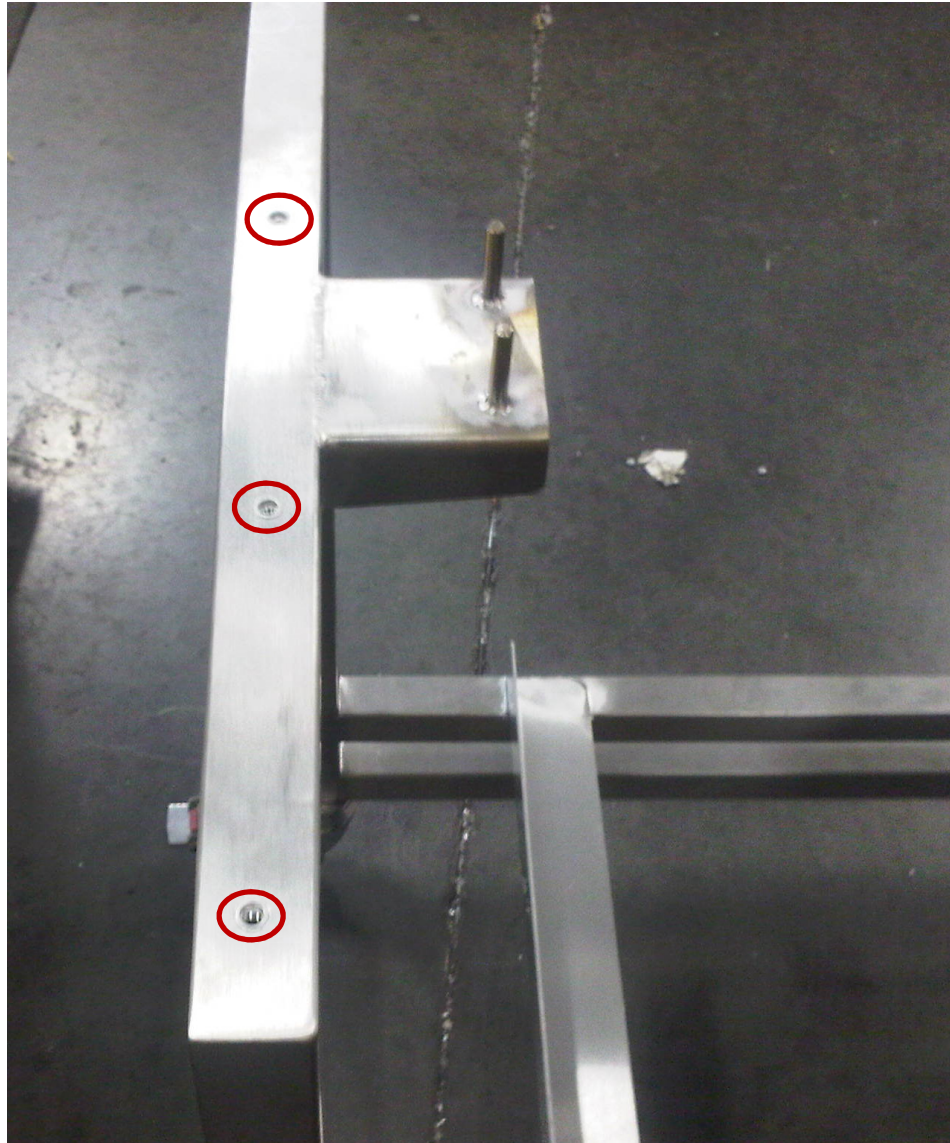




Fold Frame Drilling Template print as shown. Instructions are also on the print. Place template on frame and center punch the frame in the 3 locations indicated on the print.

Be sure marks are centered on frame and then drill the 3 holes using a .297 dia. drill (13/64).

Remove any burrs from the holes and then install 3 rivet nuts in the drilled holes using the tool provided.

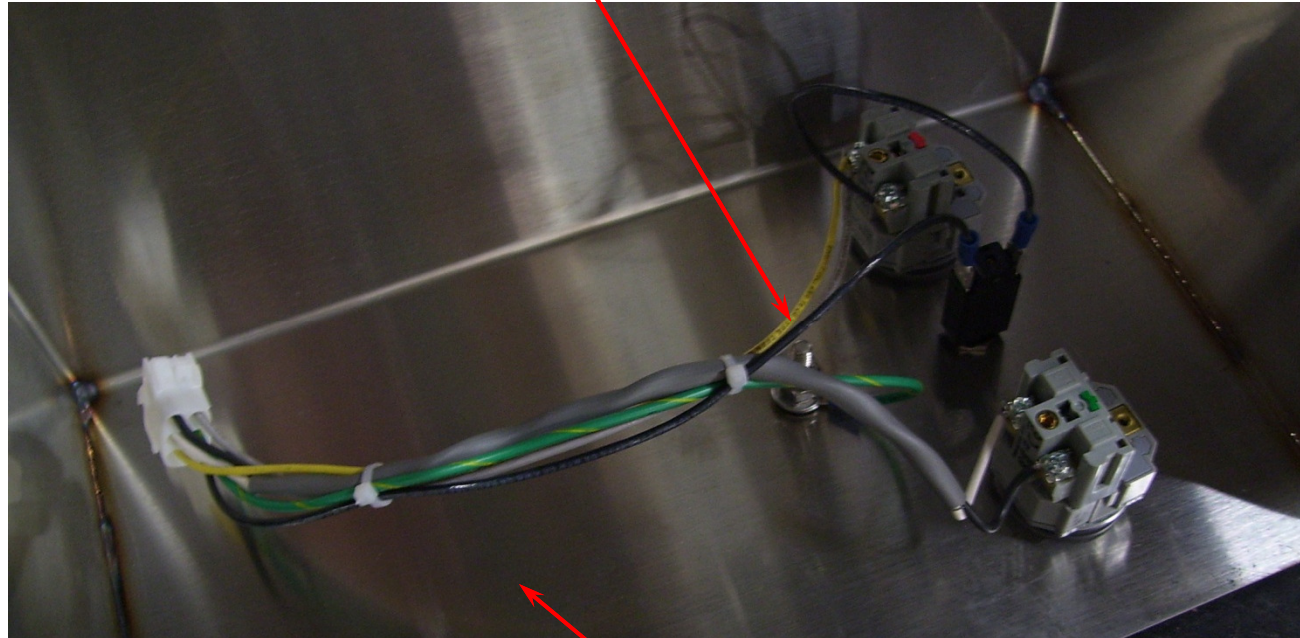




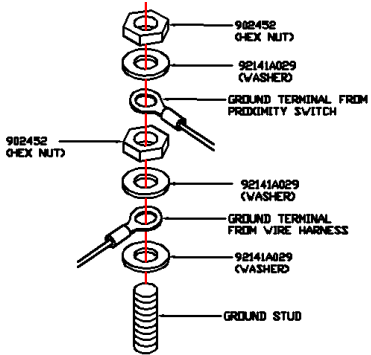
Remove existing Motor Cover from Mariator and remove the existing Start Switch, Stop Switch, and Circuit breaker from the cover. Record the serial number on the original cover so it can be transferred to the new cover. Do not reuse the original wiring harness.

Install Proximity Switch Cord using the instructions included in the Retrofit Timer kit, RT015RT.

Install the original Start Switch, Stop Switch and Circuit Breaker into the new Motor cover then connect the new wiring harness that is included in the **FMA015RT** Retrofit Timer assembly.

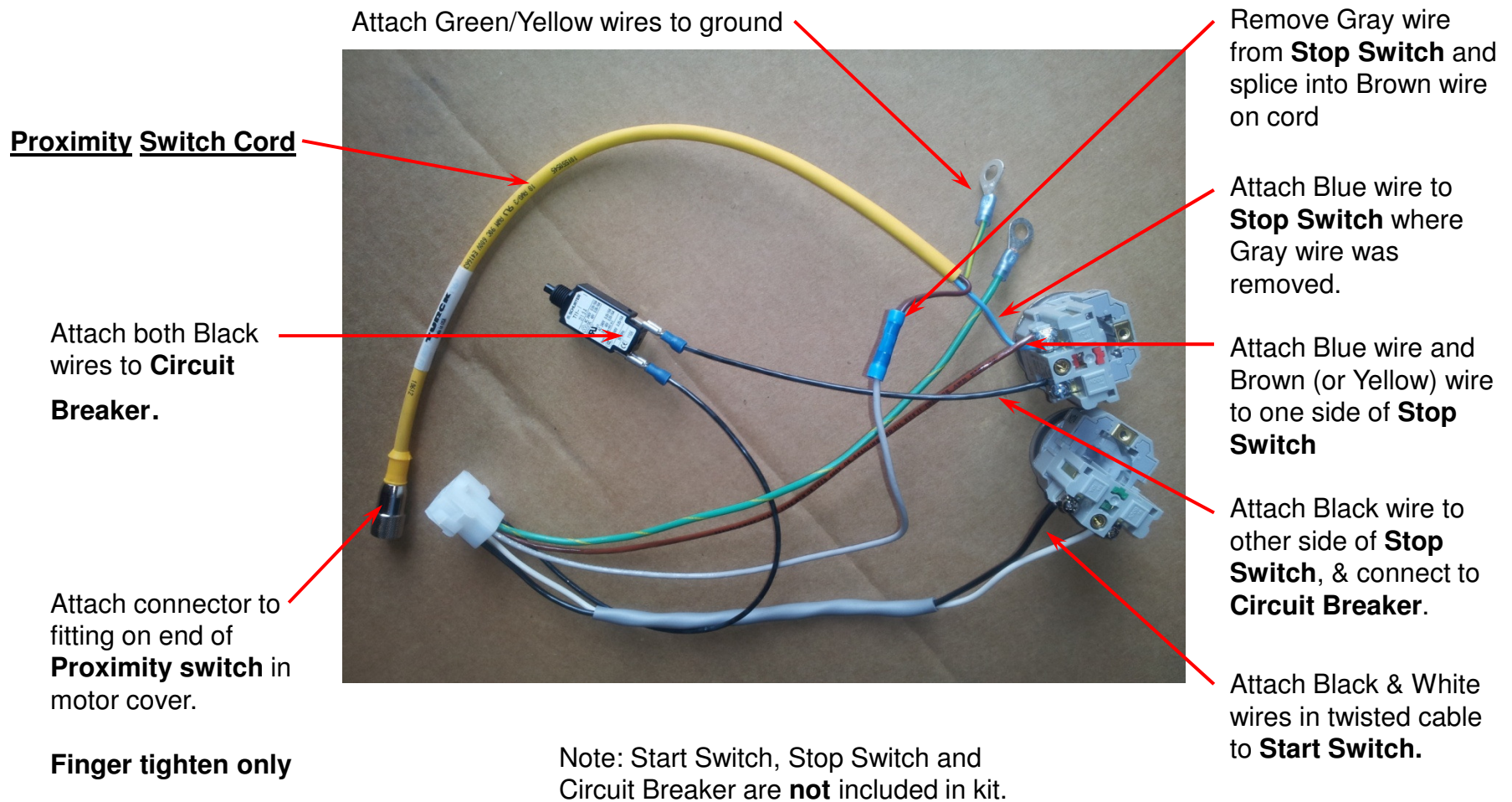


Affix a label with the original serial number inside the cover in this area.

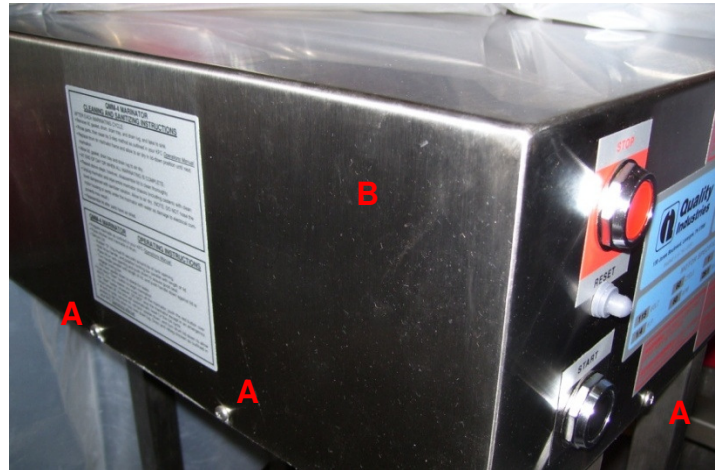


Connect the 2 ground wires to the ground stud as shown above. Cable tie the wire harness as shown.

Proximity Switch connection for units with safety cover



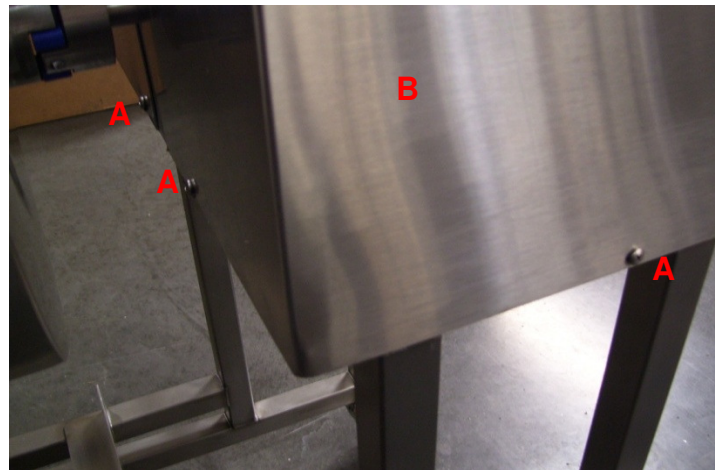
To re assemble the motor cover, set the cover on with the cutout in the cover going over the shaft. Once it is in place start all the screws.



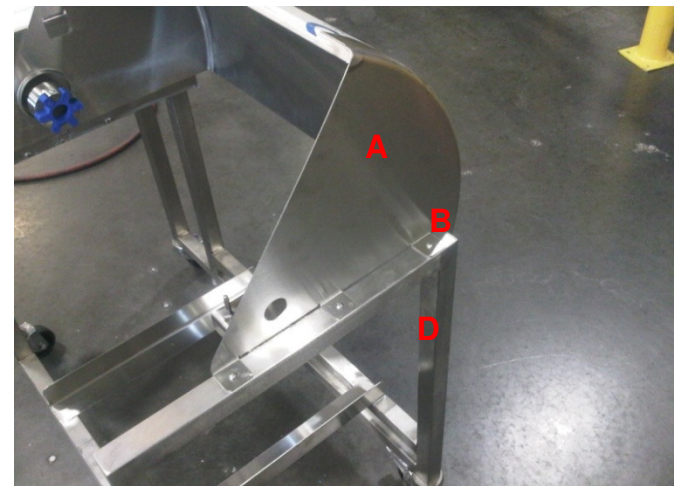
Note: It will be easier to start all the screws and then go back and tighten each individually.

A. [902431](#) (6x)
Screw 10-32 x 3/16
SS Machine

B. 202480 Motor
Cover Housing

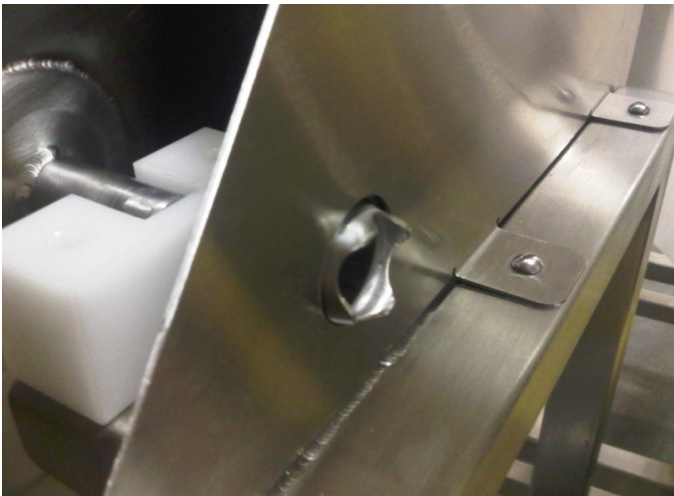
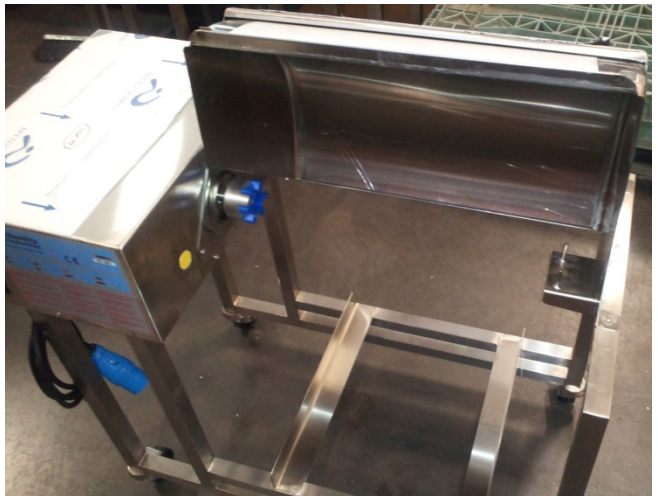


- A. **202464** (1x)
Assembly, Outer
Cover
- B. **902462** (6x)
Screw, 10-32 X
1/2 S/S Mach.
- C. **202478** (1x)
Assembly, Inner
Cover
- D. **200109** (1x)
Assembly,
Marinator Frame



Set the outer cover (**202464**) on the frame with the opening towards the front of the Marinator. Start all 6 screws and then go back and tighten individually.

Once that is completed, sit the inner cover (**202478**) over the shaft and with the sleeve sticking thru the hole on the right side of the outer cover (**202464**).



Once the installation is complete, test the unit to be sure the safety switch is working properly by starting the marinator, with the cover closed. Once the marinator is running, open the cover. The Marinator should stop and not start again until the cover is closed and the start switch is pressed again.