

TYPICAL

BPSC-5440 INSTALLATION

- 1) Quikserv windows must be installed level and square to work properly.
- 2) Install a 3 sided open back sub-frame 1-3/4" x 4". (Optional)
- 3) Anchor through each sub-frame at two places approx. 5" at top and bottom of each side jambs. (See Detail A)
- 4) If not using sub-frame, use caution when drilling thru side jamb. Drilling into 1" pvc tube will void warranty. (See Figure 1)
- 5) Recommended height from floor to service opening to be 36". (Check all local and city codes)
- 6) Silicone all exterior and interior joints.
- 7) All other type of anchoring to be approved by certified engineer.

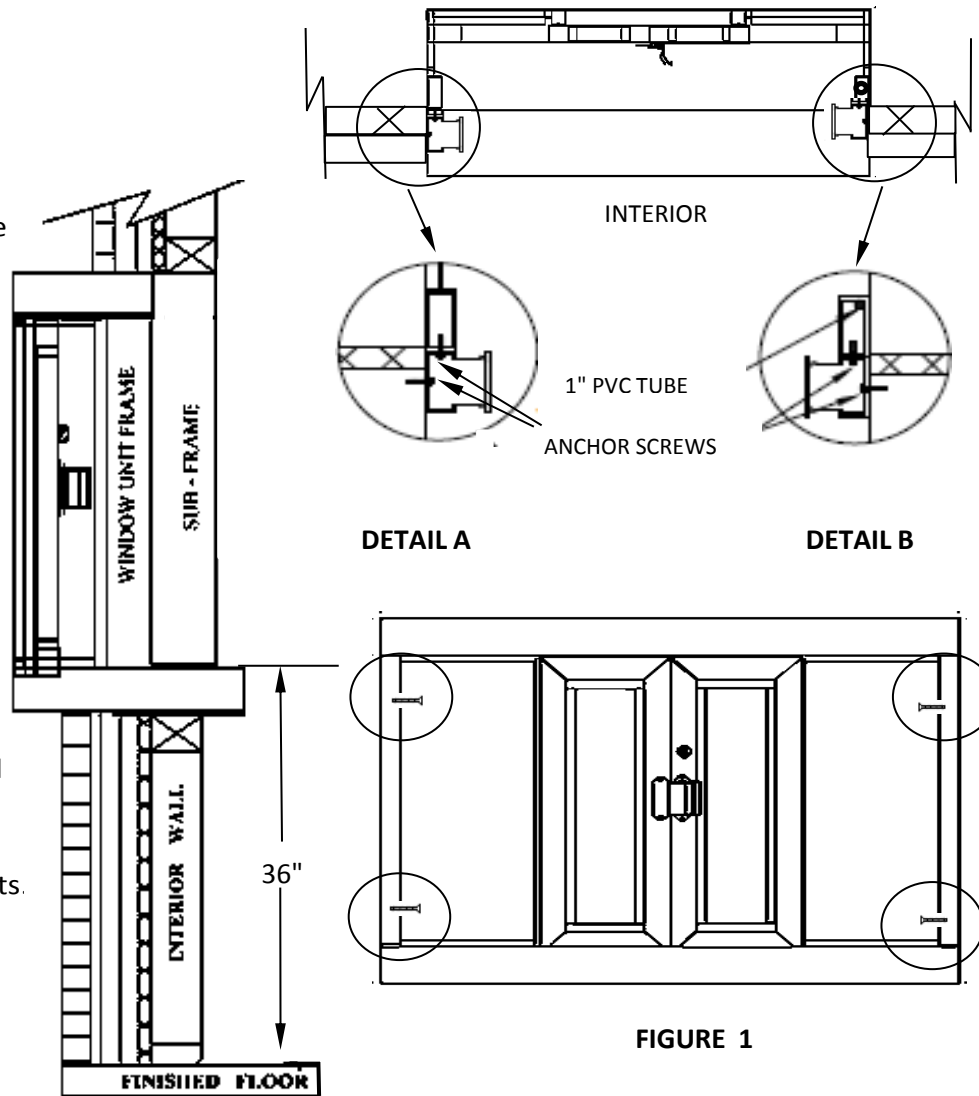


FIGURE 1

General Notes

Actual Dimension
53-1/2"(W) x 40"(H)

Service Opening
17-3/4"(W) x 31-1/2"(H)

Rough Opening
54"(W) x 40-1/2"(H)

NOTE 1:
Anchor Screws to be supplied by contractor.

NOTE 2:
1-3/4 x 4 open back sub-frame with snap in cover supplied by others. (See Details A & B)

NOTE 3:
Sash & glass must not be obscured by the exterior finished wall.

CAUTION:
Use caution when drilling thru the right jamb. A 1" pvc tube is located inside the right jamb.

QUIKSERV
11441 BRITTMOORE PARK DR.
HOUSTON, TX., 77041

TITLE: INSTALLATION PROCEDURE				
Drawing Name BPSC-5440 INSTALLATION DRAWING				
DATE 4/06/2016	DRAWN BY RBV	SCALE NTS	SHEET 1 of 1	SIZE A

NOTE: THIS DRAWING EMBODIES A CONFIDENTIAL PROPRIETY DESIGN ORIGINATED AND OWNED BY QUIKSERV CORP. AND IS SUBMITTED UNDER A CONFIDENTIAL RELATIONS ALL PATENT, MANUFACTURING, SALE RIGHTS REGARDING THE SAME ARE RESERVED EXCEPT TO THE EXTENT RIGHTS ARE EXPRESSLY GRANTED TO OTHERS. THE RECIPIENT AGREES BY ACCEPTING HIP. THESE DRAWINGS NOT TO SUPPLY OR DISCLOSE ANY INFORMATION REGARDING THEM TO ANY UNAUTHORIZED PERSON.