

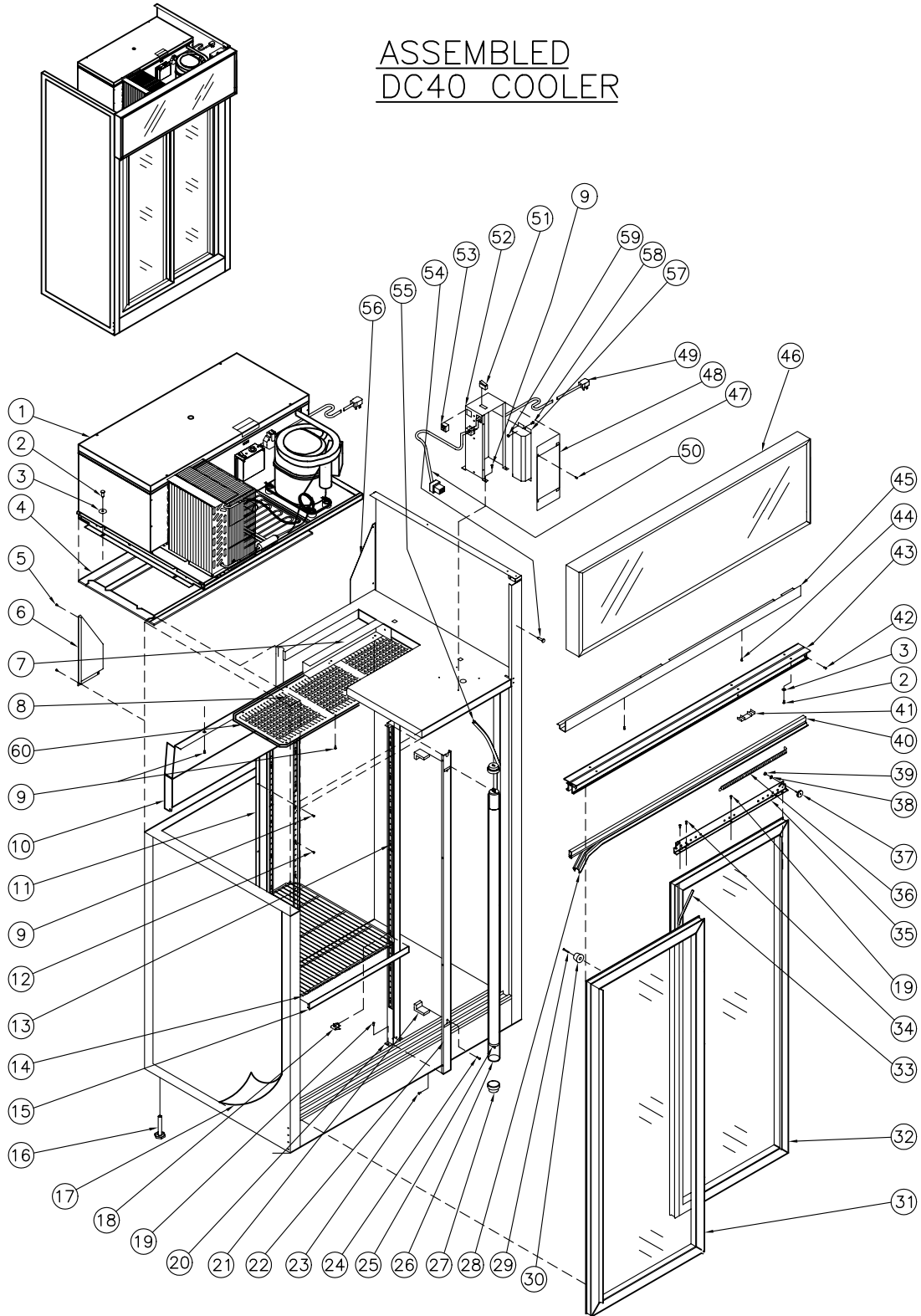
**QBD<sup>®</sup> Cooling Systems Inc.**

31 BRAMSTEELE ROAD  
BRAMPTON, ONTARIO  
L6W 3K6

TEL: (905) 459-0709  
FAX: (905) 459-1478

COOLER:  
DC40 34-9508-XXX 120V, 60Hz.

## ASSEMBLED DC40 COOLER





**Cooling Systems Inc.**

31 Bramstele Rd  
 Brampton, Ontario, Canada  
 L6W 3K6  
 Telephone: (905) 459-0709  
 Toll Free: (800) 633-3005  
 FAX: (905) 459-1478  
[info@qbd.com](mailto:info@qbd.com)  
[www.qbd.com](http://www.qbd.com)

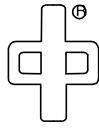
# DC40 Cooler

## (34-9508-XXX) 120V, 60 Hz.

Item No.	Part No.	Pepsi Part No.	Description	Item No.	Part No.	Pepsi Part No.	Description
1	47-0010-370	1004717	Refr Chassis Super 1/2 HP	31	47-7526-739		Door Assy Complete DC40 LH
2	47-0264-308	83973	Scw, MA 1/4 - 20 x 3/4 PH Pan HD	32	47-7527-739	83977	Door Assy Complete DC40 RH
3	53-0267-006	83974	Washer 1/4" Split Lock	33	47-7361-039	69563	Seal Foam Door Vert 5' Long
4	47-0060-083	1006865	Seal Gasket Ref & Cab 40/60 Kit	34	47-0400-019		Scw TR 8-32 x 1/2 Slot Hex HD
5	20-1141-001		Scw, SD 8 x 1/2 PH Pan HD	35	47-7532-039	69710	Bracket Door Mtg P DC40 21 1/2"
6	47-0030-630		Gusset Corner Rear LH	36	53-0149-076	1024322	Spring Door DC40
7	47-0030-875		Divider Evap Air DC40 & DC60	37	47-0530-088	69715	Wheel Sliding Door 1" Dia 1/4 - 20
8	47-0031-290		Mesh, Inlet DC40/49/60	38	53-0138-013	1006114	Washer, 1/4" Int/Ext 'A'
9	53-0301-021		Scw SM 8 x 1/2 'AB' PH TR HD	39	47-0360-036	1006115	Nut, 1/4 - 20 HX 2 Way Lock ZC
10	47-0030-855		Baffle Air Discharge DC40S	40	47-7393-239	1008150	Seal Holder Door DC40
11	47-0030-801		Pilaster Support Center Rear	41	47-7386-039	67589	Extrusion Track Filler .875
12	47-0400-007	510282	Scw SM 8-18x.65 A Space Hex HD	42	20-0468-004		Scw SM #6 x 1/2 'A' PH TR HD
13	53-0377-031	80230	Pilaster Strip	43	47-0031-570		Track Door 43" Long DC40 /98
14	47-0200-025	81742	Shelf DC40/DC60 Standard	44	20-0468-012		Scw SM 8 x 3/4 'AB' PH TR HD
15	47-7389-139		Price Tag Holder 22" LG	45	47-0030-846	69712	Xover Wireway Horiz Top DC40S
16	47-0530-089	510204	Level Leg 1/2 x 3 x 1.375 AF	46	47-0010-654	1003080	Sign Assy DC40/SL40 Black
17	47-7046-xxx		Decal (Side)	47	47-0400-012		Scw, SM 8x.375 'B' Ind Hex HD
18	53-0377-032	510362	Bracket (Clip) Shelf Support	48	47-0030-800		Cover Power Box
19	47-0400-021		Scw SM 10 x 3/4 "B" Ind SL HX HD	49	18-7218-001	1007217	Cord Service 16/3 SJTW-A 12' Long
20	47-0030-779		Post Center Front Stucco Alum	50	47-0450-138	1000256	Harness, 68" 9 Pos
21	47-0440-076	81809	Lampholder Euro-Type Shunted	51	47-0520-257		Kit, Switch Replacement
22	47-7515-033	69705	Cover Center Lightpost Front	52	47-0032-023		Box Power L1
23	47-0400-012		Scw SM #8x.375 "B" Ind Hex HD	53	47-0440-007	1003097	Outlet 3 Wire 115V C/W Term
24	20-0469-016		Scw MA 6-32x.312 PH TR HD	54	47-0400-004	1003078	Scw. MA 8-32 X 1/2 PH TR HD
25	47-0530-257		Lamp Fluorescent Nom. 48"	55	47-7379-039	69690	Gasket Foam Vert. C-Fold 60" LG
26	47-0120-115		Protector Lamp Tube	56	47-0030-631		Gusset Corner Rear RH
27	47-0120-114	1020840	Cap, T8 Lamp Protector End	57	47-0530-264	60490	Ballast, Electronic 2 lamp.
28	47-7359-039	69706	Seal Foam Door Horiz (135 1/2" L)	58	47-0254-005		Scw. MA 10-32 X .375
29	20-0468-012		Scw SM 8 x 3/4 PH TR HD	59	20-0498-005		Nut 10-32 Keps
30	18-8950-000	69707	Rubber Feet / Door Stop	60	47-0130-153		Channel, Extrusion
					47-0520-206		Kit, Electrics for AKA4476YXA

**Accessories:**

47-0430-051	1003401	Capacitor AKA4476YXA Tecumseh
47-0430-052	83979	Overload AKA4476YXA Tecumseh
47-0430-170	1003032	Relay AKA4476YXA Tecumseh
47-0520-077	81272	Lock & Key Assy Sliding Door
47-0520-171	81506	Kit, DC40 Door Track / Sweep
47-0520-183		Kit, DC40/49 Lamp Conversion
47-0520-216	1001844	Caster Kit - Swivel Type
47-0520-245	1001883	Kit, Casters Transfer - No Wheels
47-7353-139		Trim, DC40/49/60 Door Handle
47-7355-239		Door Track Bottom DC40

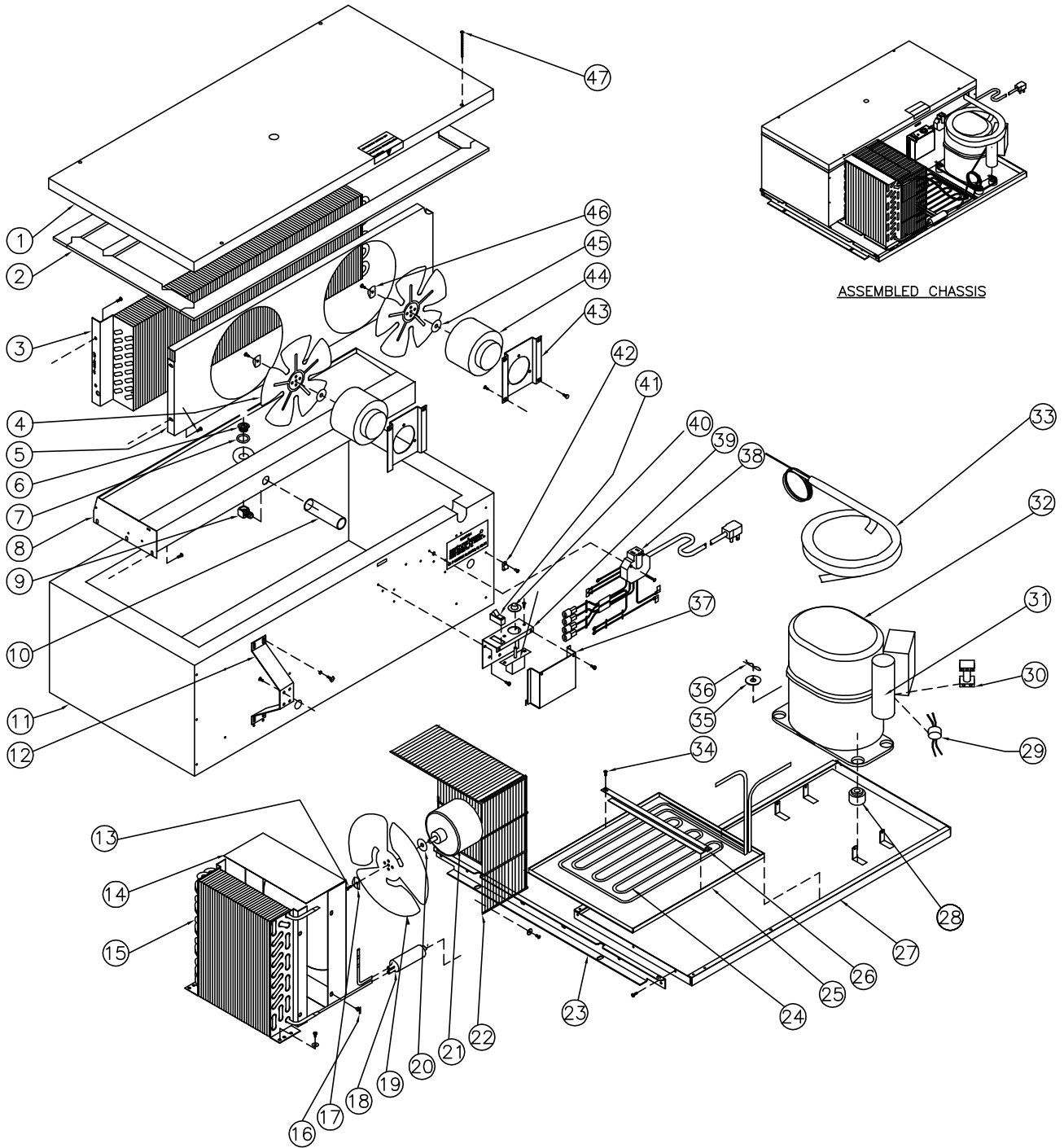


QBD<sup>®</sup> Cooling Systems Inc.

31 BRAMSTEELE ROAD  
BRAMPTON, ONTARIO  
L6W 3K6

TEL: (905) 459-0709  
FAX: (905) 459-1478

REFRIGERATION CHASSIS 1/2HP  
47-0010-370 120V, 60Hz



# Refrigeration Chassis ½ HP

## 47-0010-370

120V, 60 Hz.

Item No.	Part No.	Pepsi Part No.	Description	Item No.	Part No.	Pepsi Part No.	Description
1	47-0010-240		Evaporator Box Top Assembly ½ HP	25	47-0030-769		Tray Water Evaporator Hot Side
2	47-0060-100	1003107	Gasket Seal, Cap & Box Large	26	47-0030-915		Bracket Hot Gas Hold-Down
3	47-0530-105	1003002	Evaporator Coil DC40, DC49, DC60	27	47-0030-770		Platform Compressor DC60
4	53-0341-026	510482	Blade Evaporator Fan	28	47-0530-664		Grommet Compressor Foot 2221004
5	47-0030-806		Shroud Evaporator Fan DC60	29	47-0430-052	83979	Overload, AKA4476YXA
6	31-4213-000	151668	Connector Drain ½ - 20	30	47-0430-009		Relay, AKA4476YXA
7	47-0460-005	69695	Washer Drain Poly ½ ID x .687 OD	31	47-0430-051	1003401	Capacitor, AKA4476YXA
8	47-0010-232	1003109	Tray Drip Evaporator Metal Box	32	47-0530-147	250858	Compressor, AKA4476YXA ½ HP
9	31-4214-000	1003788	Drain Adapter	33	47-0020-300		Suction Line Assy ½ HP
10	11-3375-000		Tube, Beer CLR Vinyl ⅜ x ⅜ x 12"	34	53-0301-021	1028262	SCW, 8 x ½ 'AB' PH TR HD
11	47-0010-371		Box Refrigeration Low Side Assembly	35	18-6147-000		Washer, 3/8IDx13/16OD SAE Flat ZC
12	47-0030-804		Bracket Condenser Fan Motor	36	47-0370-001		Clip, Compressor Mounting
13	47-0210-001		SCW MA M4X16mm PH PAN HD	37	47-0031-309		Cover, Cold Control/Switch
14	47-0030-803		Shroud Condenser ½ HP Super	38	47-0450-081	81568	Harness, Ref Short Power Cord 4ft
15	47-0530-100	1003100	Condenser Coil DC40, DC49, DC60	39	47-0034-475		Bracket, Cold Control
16	33-2415-000		Clip, Shroud	40	47-0520-260	69371	Kit, 370 Danfoss Conversion
17	47-0460-020		Washer	41	47-0430-212		Switch Toggle
18	74-0530-106		Drier C-032 CAPT ¼" ODM	42	9-0002-705	1026069	Clamp "P" 5/16"
19	53-0341-022	1003095	Fan Blade 10" Dia, 4 Blade	43	47-0030-889		Bracket Motor Bent Mounting Evap
20	47-0530-252		Xdaptor Pad 1-071-188	44	47-0410-028	83986	Motor, Fan 9 Watt Evap
21	47-0410-029	1003402	Motor, Condenser 16 Watt	45	47-0530-252		Xdaptor Pad 1-071-188
22	47-0031-320		Guards, ½ HP 134a Fan	46	47-0460-020		Washer
23	47-0030-805		Tie Channel DC40 & DC60 29"	47	53-0271-054		SCW SM 10x2.500 PH TR HD
24	53-0167-360	1004065	Coil, Intercooler ½ HP				
					47-0520-206		Kit, Electrics for AKA4476YXA