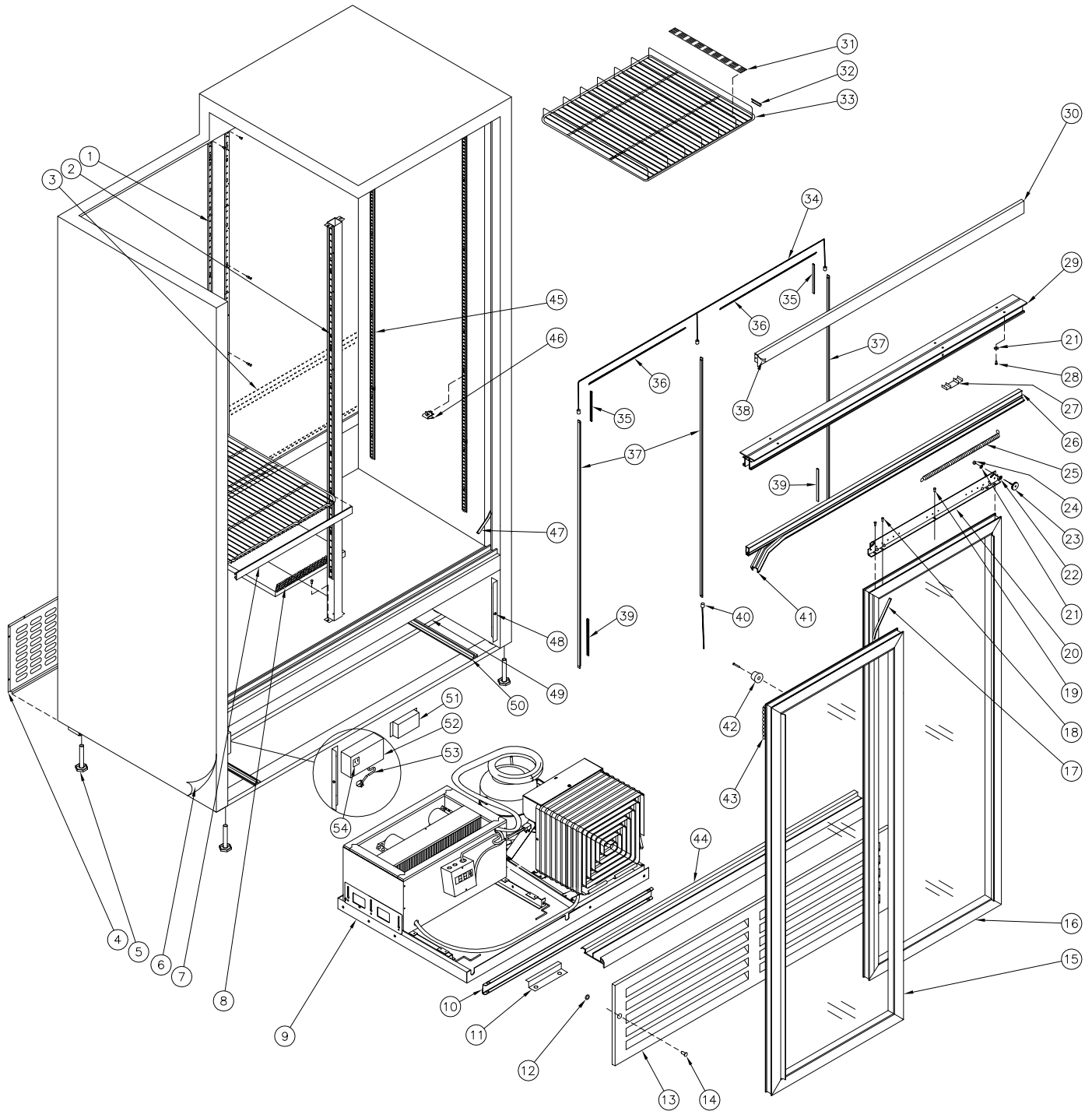


Exploded View : CD4160-HC





Cooling Systems Inc.

31 Bramstele Rd
Brampton, Ontario, Canada
L6W 3K6

Telephone: (905) 459-0709
Toll Free: (800) 663-3005
FAX: (905) 459-1478
info@qbd.com
www.qbd.com

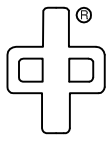
CD4160-HC Cooler

(84-7081-XXX) 120V, 60 Hz.

Item No.	Part No.	Pepsi Part No.	Description	Item No.	Part No.	Pepsi Part No.	Description
1	47-0034-324		Pilaster Strip CD4160	28	47-0264-308	83973	SCW MA ¼ -20 x ¾ PAN HD Quad
2	47-0035-445		Post Center, CD4160-HC	29	47-0031-570		Door Track 43" LG DC40/98'
3	47-0034-314		Panel, CD4160 Back Discharge	30	47-8591-039	1006317	Cover, Wheel DC41
4	47-8896-039		Grill, CD4160 Back Cover	31	47-0130-591		Shelf Glide CD4154/56/60 Blue
5	47-0530-089	510204	Level Leg ½ x 3 x 1 ¾ AF	32	47-0034-003		Clip, Shelf Stopper, CD14
6	47-8925-932		Decal CD4160 Side Pepsi	33a	47-0200-178	1020055	Shelf Standard DC4154
7a	47-0130-250	1000819	Price Holder DC40/60 18.¾ Black	33b	47-0011-226	1005043	Shelf Gravity, 600 ml CD4154/60
7b	47-0130-130		Price Holder DC40/60 18.¾ Blue	34	47-0450-314		Connector, CD4154-60 Wire Lead
8	47-0035-106	1024441	Duct, CD Small Air	35	47-0130-785		Cap, CD45-HC Top LED Breaker
9	80-0011-388		Ref. Chassis ¼+ HP CD HC R290 S/S	36	47-0130-793		Channel, CD4160 Wireway Cover
10	47-0033-411	1020397	Bracket, CD ¼ HP Lift Rod Lock	37	47-0530-671	1027017	LED, 35.5" L11-35.5 Series
11	47-0034-226		Bracket, SL10 Comp. Tie Down	38	47-8926-932	1008416	Decal, CD4154 Header Pepsi
12	47-0530-639		Nut, Push Fastner	39	47-0130-749		Cap, CD4160 Side LED Snap 4.5
13	47-8895-039	1005785	Grill CD4160 Front Black	40	47-0450-285		Connector, 36" Wire Lead
14	47-0254-007		SCW MA #10 - 32 x ¾ PH PAN	41	47-7359-039	69706	Seal Foam Door Horizontal
15	47-7677-739	1024302	Door Assy, LH CD4160	42	47-0120-075	1024709	Bumper, Rubber Stopper
16	47-7678-739	1024301	Door Assy, RH CD4160	43	47-0010-182		Chain Door Hook Up
17	47-7361-039	69563	Seal Foam Door Vertical	44	47-0130-557		Door Track Bottom CD4160
18	47-0400-019		SCW TR 8-32 x ½ Slot Hex HD	45	47-0034-085		Pilaster Strip 40 ¾"
19	53-0301-021		SCW SM 8 x ½ 'AB' PH TR HD	46	53-0377-032	510362	Bracket (clip) Shelf Support
20	47-0030-865		Bracket Door Mounting	47	47-7379-139	1008528	Gasket Foam Vertical Cabinet
21	53-0267-006	83974	Washer ¼ Split – Lock Zinc	48	47-0033-779		Support Grill DC41
22	53-0138-013	1006114	Washer ¼ " Int Ext 'A'	49	47-0034-320		Beam, CD4160 Center Channel
23	47-0530-088	69715	Wheel Sliding Door 1" Dia ¼ 20	50	47-0034-322		Rail, CD4160 Compressor
24	47-0360-036	1006115	Nut ¼ - 20 Hex 2 Way Lock Zinc	51	47-0440-087		Driver, LED 20W
25	53-0149-076	1024322	Spring Door DC40/49	52	47-0035-446		Box, Power CD4154-60 LED
26	47-7393-239	1008150	Seal Holder Door DC40 43/98	53	18-7218-001	1007217	Cord, Power 14/3 SJTW-A 12'
27	47-7386-039	67589	Extrusion Track Filler .875	54	47-0440-007	1003097	Outlet, 3 Wire

Accessories:

47-0060-177		Gasket Seal UL Ref CD ¼ HP HC
47-0130-554		Trim, CD4160 Door Handle
47-0520-077	81272	Kit, Lock for Sliding Door
47-0520-216	1001844	Caster Kit – Swivel Type
47-0520-245	1001883	Kit, Casters Transfer - No Wheels
47-0520-279		Kit, Electrics for EM2X3132U



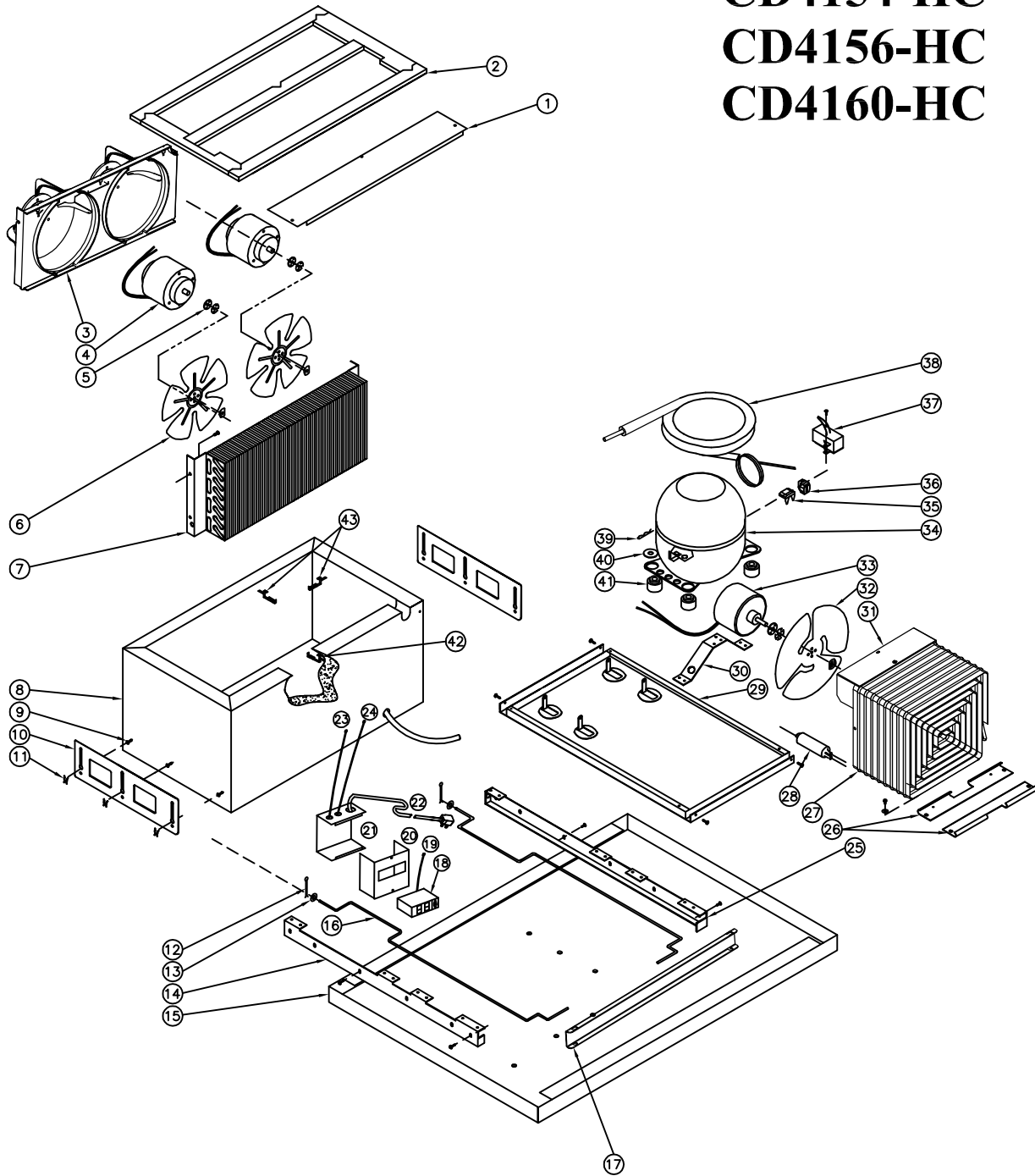
QBD® Cooling Systems Inc.

31 BRAMSTEELE ROAD
BRAMPTON, ONTARIO
L6W 3K6

TEL: (905) 459-0709
FAX: (905) 459-1478

REF. CHASSIS 1/4+HP SIDE/SIDE
WITH DUAL EVAPORATOR FAN
80-0011-388 120V, 60Hz

Used in Models: CD4154-HC CD4156-HC CD4160-HC





Cooling Systems Inc.

31 Bramsteele Rd
Brampton, Ontario, Canada
L6W 3K6

Telephone: (905) 459-0709
Toll Free: (800) 663-3005
FAX: (905) 459-1478
info@qbd.com
www.qbd.com

Refrigeration Chassis 1/4+ HP

80-0011-388 HC R290 Side/Side

120V, 60 Hz.

Item No.	Part No.	Pepsi Part No.	Description	Item No.	Part No.	Pepsi Part No.	Description
1	47-0033-376		Baffle, CD 1/4 HP Evap. Air	23	47-0450-262		Harness, CD Evaporator
2	47-0060-177		Gasket Seal UL Ref CD 1/4 HP	24	47-0450-267		Harness, 155 Chassis Compressor
3	47-0120-168	1007550	Shroud, 1/4 HP CD Evap. Plastic	25	47-0034-297		Channel, RH Tie
4a	47-0410-068		Motor, 13W "ECR2" - Electric	26	47-0033-994		Support, 1/4 HP Condenser
4b	47-0410-071		Motor Fan UNADA-FM	27	47-0530-568		Cond. 1/4 HP, 1/4 OD Lint Forgiven
5	53-0248-014		Washer Flat #10 218 x 500 x 0625	28	47-0011-317		Drier Assy, 1/4" Swagged
6	47-0120-060	510208	Fan Blade 6" DIA.	29	47-0020-557		Welded, CD 1/4 HP Comp Platform
7	47-0530-380	1004554	Evap. Coil THD/CD	30	47-0035-475		Bracket, HC 1/4 HP Cond Motor
8	47-0011-233		Evap. Box Assy CD Side by Side	31	47-0033-996		Shroud, Condenser
9	47-0400-007	510282	SCW Pilaster Strip "Custom"	32	47-0530-541	57910	Fan Blade OP OU7737-5 CW
10	47-0034-302		Support, Tie Channel	33a	47-0410-068		Motor, 13W "ECR2" - Electric
11	47-0530-544		Retainer, CD Crimp Ring 5/16"	33b	47-0410-071		Motor Fan UNADA-FM
12	47-0530-533		Cotter Pin 3/32" Dia x 1" LG	34	47-0530-688		Compressor, 1/4+ HP EM2X3121U
13	18-6147-000		Washer 3/8 SAE Flat ZC WFS-37	35	47-0430-247		Overload, Embraco EM2X3121U
14	47-0034-298		Channel, LH Tie	36	47-0430-246		Relay, Embraco EM2X3121U
15	47-0011-432		Assy, Comp Green Platform Base	37	47-0430-248		Capacitor, Embraco EM2X3121U
16	47-0035-424		Rod, Lift Side/Side Green	38	47-0020-620		Suction Line R290 80-0011-388
17	47-0033-411	10220397	Bracket, CD 1/4 HP Lift Rod Lock	39	47-0370-001		Clip, Comp. Mounting #79555
18	47-0430-202		Control, CAREL	40	18-6147-000		Washer 3/8 SAE Flat ZC WFS-37
19	47-0430-204		Probe, CAREL	41	47-0530-664		Grommet Compressor Foot 2221004
20	47-0035-054		Cover, Control CD 155 Chassis	42	47-0120-187		Clip, CD Probe
21	47-0035-053		Box Control CD 155 Chassis	43	47-0530-690		Clip Wire
22	47-0450-129		Cord Power 3 Wire 48" LG				
				47-0520-255	1020990		Kit, CAREL Cold Control
				47-0520-279			Kit, Electrics for EM2X3121U 1/4 HP