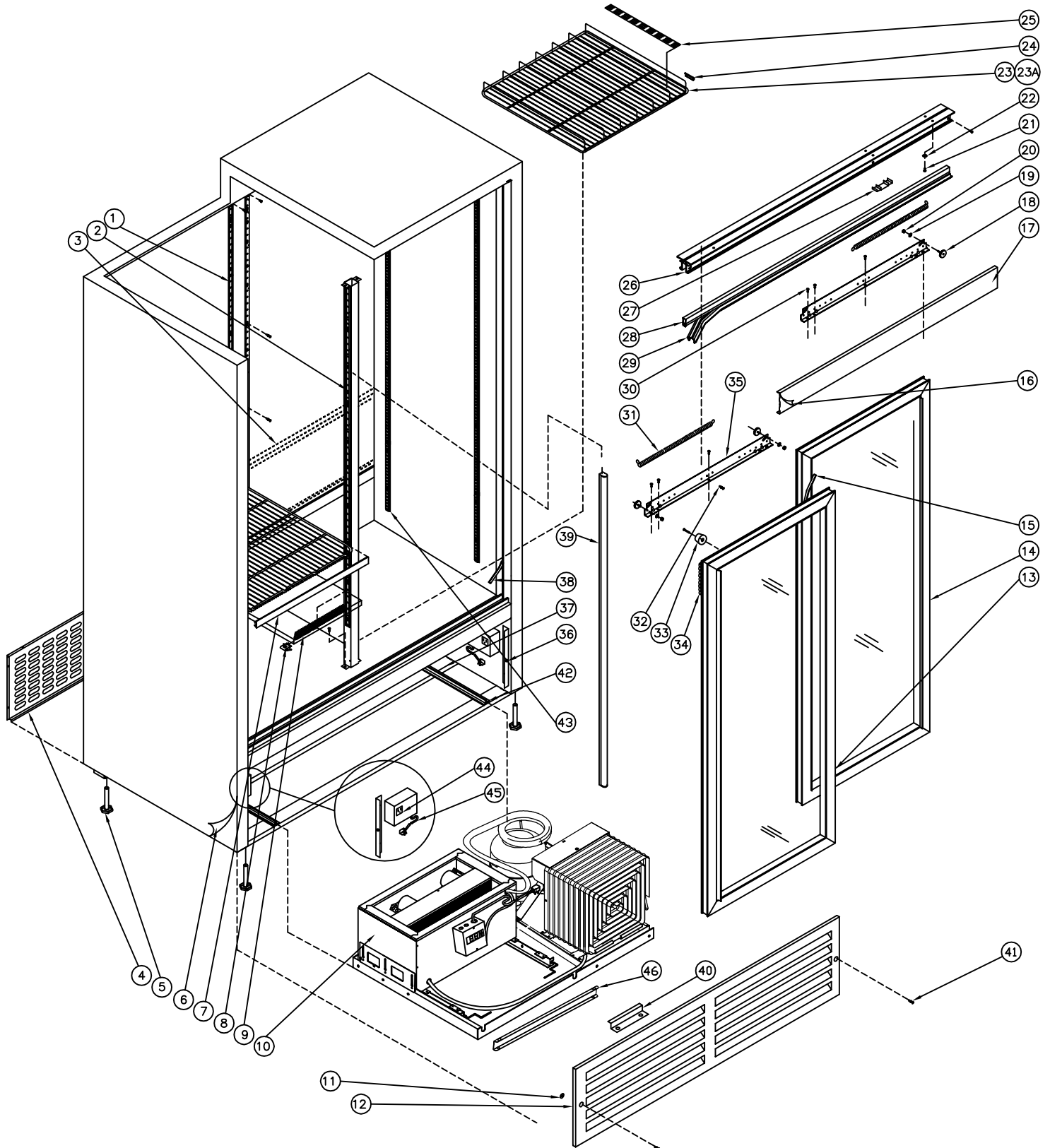


QBD[®] Cooling Systems

31 BRAMSTEELE ROAD
BRAMPTON, ONTARIO
L6W 3K6

TEL: (905) 459-0709
FAX: (905) 459-1478

COOLER: CD4160
34-7081-639





Cooling Systems Inc.

31 Bramstele Rd
Brampton, Ontario, Canada
L6W 3K6

Telephone: (905) 459-0709
Toll Free: (800) 633-3005
FAX: (905) 459-1478
info@qbd.com
www.qbd.com

CD4160 Cooler

(34-7081-XXX) 120V, 60 Hz.

Item No.	Part No.	Pepsi Part No.	Description	Item No.	Part No.	Pepsi Part No.	Description
1	47-0034-324		Pilaster Strip CD4160	23b	47-0011-226	1005043	Shelf Gravity, 600ml CD4154/60
2	47-0034-312		Post Center, CD4160	24	47-0034-003		Clip, Shelf Stopper, CD14
3	47-0034-314		Panel, CD4160 Back Discharge	25	47-0130-591		Shelf Glide CD4154/56/60 Blue
4	47-8896-039		Grill, CD4160 Back Cover	26	47-0031-570		Door Track 43" LG DC40/98'
5	47-0530-089	510204	Level Leg ½ x 3 x 1.375 AF	27	47-7386-039	67589	Extrusion Track Filler .875
6	47-8925-932		Decal CD4160 Side Pepsi	28	47-7393-239	1008150	Seal Holder Door DC40 43/98
7a	47-0130-250	1000819	Price Holder DC40/60 18¾ Black	29	47-7359-039	69706	Seal Foam Door Horizontal
7b	47-0130-130		Price Holder DC40/60 18¾ Blue	30	47-0400-019		SCW TR 8 - 32 x ½ Slot Hex HD
8	53-0377-032	510362	Bracket (clip) Shelf Support	31	53-0149-076	1024322	Spring Door DC40/49
9	47-0035-106	1024441	Duct, CD Small Air	32	47-0400-007	510282	SCW, Pilaster Strip "Custom"
10a	47-0011-155	1004796	Ref. Chassis CD ¼ HP S/S Tecumseh	33	47-0120-075	1024709	Bumper, Rubber Stopper
10b	47-0011-388		Ref. Chassis CD ¼ HP S/S Embraco	34	47-0010-182		Chain Door Hook Up
11	47-0530-639		Nut, Push Fastner	35	47-0030-865		Bracket Door Mounting
12	47-8895-039	1005785	Grill CD4160 Front Black	36	47-0033-779		Support Grill DC41
13	47-7677-739	1024302	Door Assy, LH CD4160	37	47-0034-320		Beam, CD4160 Center Channel
14	47-7678-739	1024301	Door Assy, RH CD4160	38	47-7379-139	1008528	Gasket Foam Vertical Cabinet
15	47-7361-039	69563	Seal Foam Door Vertical	39	47-0530-570	1006403	LED Lamp 13 Watts
16	47-8926-932	1008416	Decal, CD4154 Header Pepsi	40	47-0034-226		Bracket, SL10 Comp. Tie Down
17	47-8591-039	1006317	Cover, Wheel DC41	41	47-0254-007		SCW MA #10 - 32 x ¾ PH PAN
18	47-0530-088	69715	Wheel Sliding Door 1" Dia ¼ 20	42	34-0034-322		Rail, CD4160 Compressor
19	53-0138-013	1006114	Washer ¼ " Int Ext 'A'	43	47-0034-085		Pilaster Strip 40¾"
20	47-0360-036	1006115	Nut ¼ - 20 Hex 2 Way Lock Zinc	44	47-0440-007	1003097	Outlet, 3 Wire
21	47-0264-308	83973	SCW MA ¼ - 20 x ¾ PAN HD Quad	45	18-7218-001	1007217	Cord, Power 14/3 SJTW-A 12'
22	53-0267-006	83974	Washer ¼ Split - Lock Zinc	46	47-0033-410	1007047	Bracket, CD ½ HP Lift Rod Lock
23a	47-0200-178	1020055	Shelf Standard DC4154				
					47-0520-207	1008771	Kit, Electrics for TPA1370YXA
					47-0520-274		Kit, Electrics for EHZS60HLP

**Note: Embraco Chassis went into production on 16-MAR-16
Starting Serial # 1EC160304338525**

Accessories:

47-0011-226	1005043	Shelf, CD4154/56/60 600ml Gravity
47-0060-167	1020411	Gasket Seal Refer & Cab CD ¼ HP
47-0130-554		Trim, CD4160 Door Handle
47-0130-557		Door Track Bottom CD4160
47-0520-077	81272	Kit, Lock for Sliding Door
47-0520-216	1001844	Caster Kit - Swivel Type
47-0520-245	1001883	Kit, Casters Transfer - No Wheels