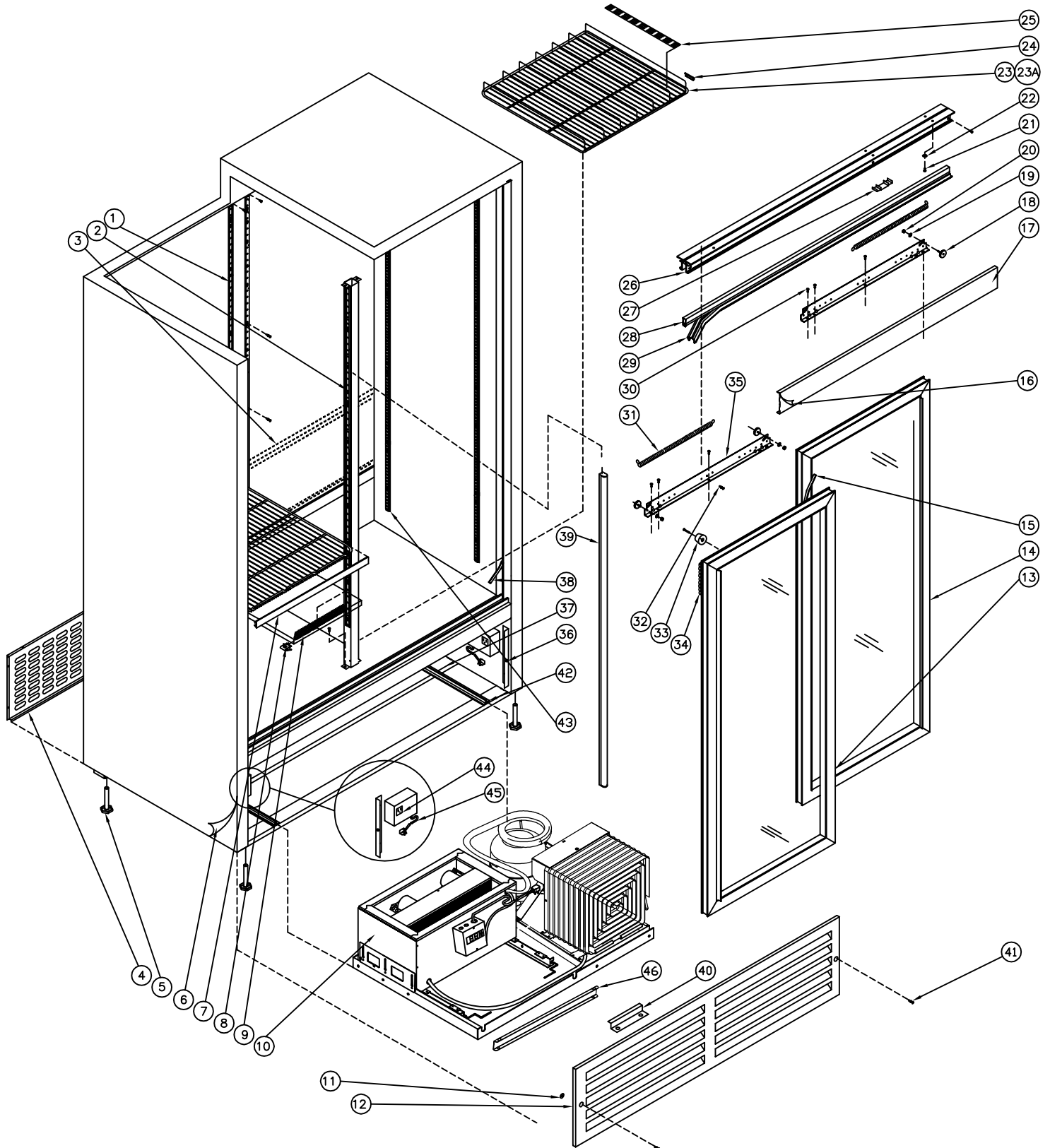


QBD<sup>®</sup> Cooling Systems

31 BRAMSTEELE ROAD  
BRAMPTON, ONTARIO  
L6W 3K6

TEL: (905) 459-0709  
FAX: (905) 459-1478

COOLER: CD4156  
34-7083-639





**Cooling Systems Inc.**

31 Bramstele Rd  
Brampton, Ontario, Canada  
L6W 3K6

Telephone: (905) 459-0709  
Toll Free: (800) 633-3005  
FAX: (905) 459-1478  
[info@qbd.com](mailto:info@qbd.com)  
[www.qbd.com](http://www.qbd.com)

# CD4156 Cooler

## (34-7083-XXX) 120V, 60 Hz.

| Item No. | Part No.                    | Pepsi Part No. | Description                        | Item No. | Part No.                    | Pepsi Part No. | Description                      |
|----------|-----------------------------|----------------|------------------------------------|----------|-----------------------------|----------------|----------------------------------|
| 1        | 47-0034-370                 |                | Pilaster, 33" Strip                | 23b      | 47-0011-226                 | 1005043        | Shelf Gravity, 600 ml CD4154/60  |
| 2        | 47-0034-379                 |                | Post Center, CD4156                | 24       | <a href="#">47-0034-003</a> |                | Clip, Shelf Stopper, CD14        |
| 3        | 47-0034-380                 |                | Panel, CD4156 Back Discharge       | 25       | 47-0130-591                 |                | Shelf Glide CD4154/56/60 Blue    |
| 4        | 47-8896-039                 |                | Grill, CD4160 Back Cover           | 26       | <a href="#">47-0031-570</a> |                | Door Track 43LGDC40/98'          |
| 5        | 47-0530-089                 | 510204         | Level Leg 0.500x3.000x1.375 AF     | 27       | <a href="#">47-7386-039</a> | 67589          | Extrusion Track Filler .875      |
| 6        | 47-8586-932                 |                | Decal CD4154 Side Pepsi            | 28       | <a href="#">47-7393-239</a> | 1008150        | Seal Holder Door DC40 43/98      |
| 7a       | 47-0130-250                 | 1000819        | Price Holder DC40/60 18.75 Black   | 29       | <a href="#">47-7359-039</a> | 69706          | Seal Foam Door Horizontal        |
| 7b       | 47-0130-130                 |                | Price Holder DC40/60 18.75 AF Blue | 30       | <a href="#">47-0400-019</a> |                | SCW TR 8-32x0.5 Slot Hex HD      |
| 8        | <a href="#">53-0377-032</a> | 510362         | Bracket (clip) Shelf Support       | 31       | <a href="#">53-0149-076</a> | 1024322        | Spring Door DC40/49              |
| 9        | 47-0035-106                 | 1024441        | Duct, CD Small Air                 | 32       | 47-0400-007                 | 510282         | SCW, Pilaster Strip "Custom"     |
| 10a      | 47-0011-155                 | 1004796        | Ref. Chassis CD ¼ HP S/S Tecumseh  | 33       | 47-0120-075                 | 1024709        | Bumper, Rubber Stopper           |
| 10b      | 47-0011-388                 |                | Ref. Chassis CD ¼ HP S/S Embraco   | 34       | 47-0010-182                 |                | Chain Door Hook Up               |
| 11       | 47-0530-639                 |                | Nut, Push Fastner                  | 35       | 47-0030-865                 |                | Bracket Door Mounting            |
| 12       | 47-8895-039                 | 1005785        | Grill CD4160 Front Black           | 36       | 47-0033-779                 |                | Support Grill DC41               |
| 13       | 47-7681-739                 |                | Door Assy, LH CD4156               | 37       | 47-0034-320                 |                | Beam, CD4160 Center Channel      |
| 14       | 47-7682-739                 | 1024558        | Door Assy, RH CD4156               | 38       | <a href="#">47-7379-139</a> | 1008528        | Gasket Foam Vertical Cabinet     |
| 15       | <a href="#">47-7361-039</a> | 69563          | Seal Foam Door Vertical            | 39       | <a href="#">47-0530-570</a> | 1006403        | LED Lamp 13 Watts                |
| 16       | 47-8926-932                 | 1008416        | Decal, CD4154 Header Pepsi         | 40       | 47-0034-226                 |                | Bracket, SL10 Comp. Tie Down     |
| 17       | 47-8591-039                 | 1006317        | Cover, Wheel DC41                  | 41       | 47-0254-007                 |                | SCW MA #10-32x.75 PH PAN         |
| 18       | <a href="#">47-0530-088</a> | 69715          | Wheel Sliding Door 1"Dia ¼ 20      | 42       | 34-0034-322                 |                | Rail, CD4160 Compressor          |
| 19       | <a href="#">53-0138-013</a> | 1006114        | Washer ¼ " Int Ext 'A'             | 43       | 47-0033-989                 |                | Pilaster, 34 3/8" Strip          |
| 20       | <a href="#">47-0360-036</a> | 1006115        | Nut ¼ - 20 Hex 2 Way Lock Zinc     | 44       | <a href="#">47-0440-007</a> | 1003097        | Outlet, 3 Wire                   |
| 21       | <a href="#">47-0264-308</a> | 83973          | SCW MA ¼ -20x.750 PAN HD Quad      | 45       | <a href="#">18-7218-001</a> | 1007217        | Cord, Power 14/3 SJTW-A 12'      |
| 22       | <a href="#">53-0267-006</a> | 83974          | Washer ¼ Split - Lock Zinc         | 46       | 47-0033-410                 | 1007047        | Bracket, CD 1/3 HP Lift Rod Lock |
| 23a      | 47-0200-178                 | 1020055        | Shelf Standard DC4154              |          |                             |                |                                  |
|          |                             |                |                                    |          | <a href="#">47-0520-207</a> | 1008771        | Kit, Electrics for TPA1370YXA    |
|          |                             |                |                                    |          | <a href="#">47-0520-274</a> |                | Kit, Electrics for EHZS60HLP     |

**Note: Embraco Chassis went into production on xx/xx/xxxx**

**Accessories:**

|                             |         |                                   |
|-----------------------------|---------|-----------------------------------|
| 47-0011-226                 | 1005043 | Shelf, CD4154/56/60 600ml Gravity |
| 47-0060-167                 | 1020411 | Gasket Seal Refer & Cab CD ¼ HP   |
| <a href="#">47-0520-077</a> | 81272   | Kit, Lock for Sliding Door        |
| <a href="#">47-0520-207</a> | 1008771 | Kit, Electrics for TPA1370YXA     |
| <a href="#">47-0520-216</a> | 1001844 | Caster Kit - Swivel Type          |
| 47-0520-245                 | 1001883 | Kit, Casters Transfer - No Wheels |