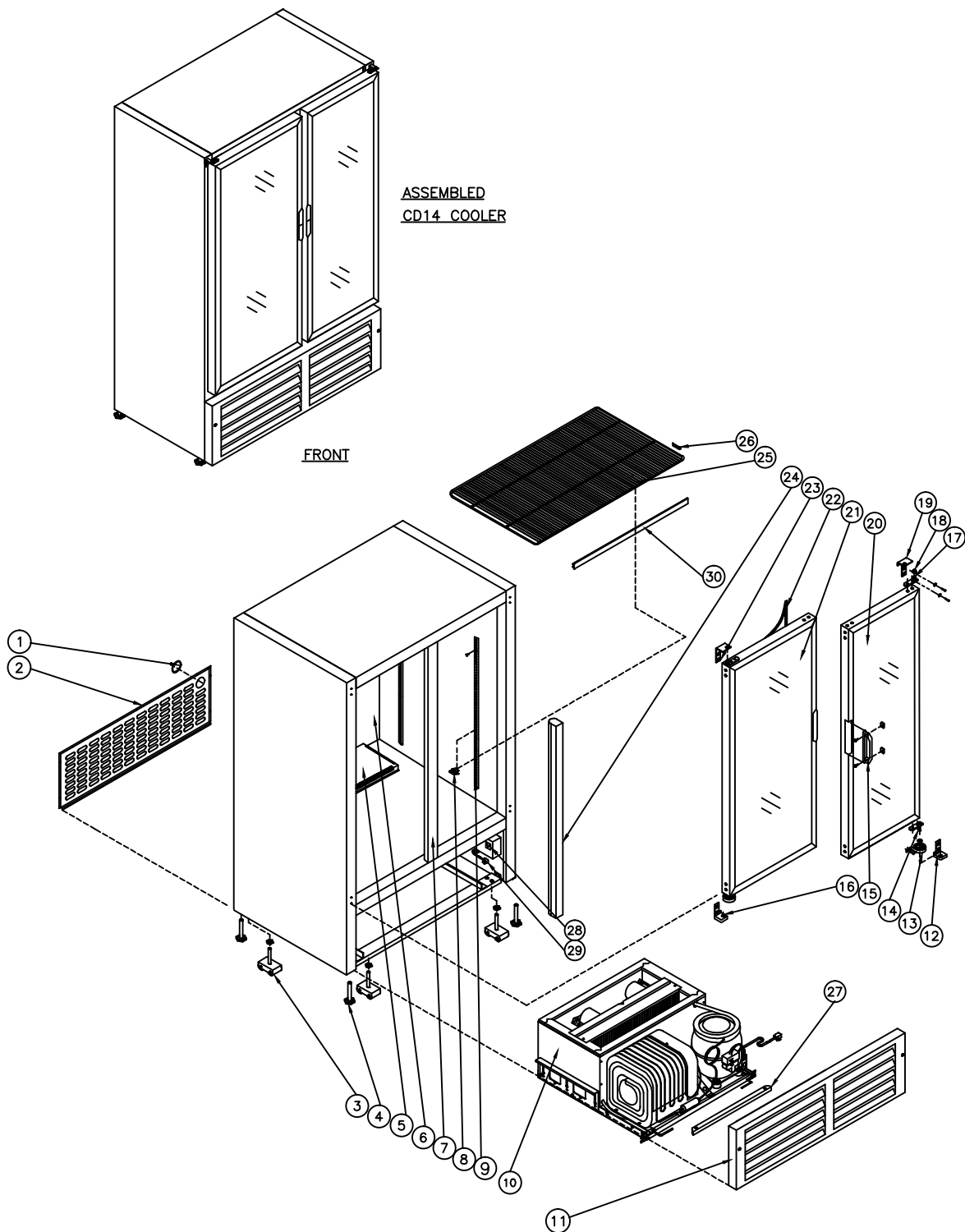


31 BRAMSTEELE ROAD
BRAMPTON, ONTARIO
L6W 3K6

QBD® Cooling Systems Inc.

TEL: (905) 459-0709
FAX: (905) 459-1478

COOLER: CD 14
CD14 34-7014 120V, 60Hz





Cooling Systems Inc.

31 Bramstele Rd
Brampton, Ontario, Canada
L6W 3K6

Telephone: (905) 459-0709
Toll Free: (800) 633-3005
FAX: (905) 459-1478
info@qbd.com
www.qbd.com

CD14 Cooler

(34-7014-XXX) 120V, 60 Hz.

Item No.	Part No.	Pepsi Part No.	Description	Item No.	Part No.	Pepsi Part No.	Description
1	47-0120-074		Bushing Snap Dia 2"	15	47-0120-166	1002413	Handle, Recess Dr Charcoal Gray
2	47-8620-039		Grill, CD14 Back Cover Black	16	47-0090-015	1001724	Hinge, DC/CD LH BTM Door
3	47-0520-214	57175	Kit, CD14 Caster Dual Wheels	17	47-0090-081	1009576	Pin Pivot Top
4	47-0530-089	510204	Level Leg ½ x 3 x 1 ¾ AF	18	47-0080-011	1005559	Insert Bronze ⅝ OD x ¼"
5	47-0035-106	1024441	Duct, CD Small Air	19	47-0090-012	81559	Hinge, DC/CD RH Top Door
6	47-0034-596		Panel, CD14 Top Discharge	20	47-7645-739	1002154	Door Assy CD14 RH
7a	47-0011-056	1021855	Center Post Assy, CD14 Beige	21	47-7646-739	1008346	Door Assy CD14 LH
7b	47-0011-121		Center Post Assy, CD14 Black	22	47-0140-019	1002370	Gasket, CD14 Door Mag. M-218
7c	47-0011-175		Center Post Assy, CD14 White	23	47-0090-014	1001725	Hinge, DC/CD LH Top Door
8	53-0377-032	510362	Bracket (Clip) Shelf Support	24	47-0530-570	1006403	LED Lamp 13 Watt
9	47-0033-989		Pilaster CD14 Strip	25	47-0200-182	1002189	Shelf CD14 Flat
10a	47-0011-184	1004404	Ref. Chassis ¼ HP CD Tecumseh	26	47-0034-003		Clip CD14 Shelf Stopper
10b	47-0011-387		Ref. Chassis ¼ HP CD Embraco	27	47-0033-411	1020397	Bracket, CD ¼ HP Lift Rod Lock
11	47-8617-039	1020089	Grill CD14 Black Front	28	47-0440-007	1003097	Outlet, 3 Wire
12	47-0090-013	80977	Hinge, DC/CD RH BTM Door	29	18-7218-001	1007217	Cord, Power 14/3 SJTW-A 12'
13	53-0149-069	510108	Spring Door	30a	47-0130-577		Price Holder CD14 Black
14	47-0090-082	1009577	Pin Pivot Bottom - Steel	30b	47-0130-545		Price Holder CD14 Blue
					47-0520-207	1008771	Kit, Electrics for TPA1370YXA
					47-0520-274		Kit, Electrics for EGZS60HLP

**Note: Embraco Chassis went into production on xx/xx/2015
Starting Serial # 1**

Accessories:

47-0011-140	1007046	Shelf, CD14 600ml Gravity
47-0034-128	61726	Key, Door T-Handle
47-0060-167	1020411	Gasket Seal Refer & Cab CD ¼ HP
47-0130-544		Shelf Glide CD14 Gravity Blue
47-0520-216	1001844	Caster Kit – Swivel Type
47-0520-218	1005838	Kit, CD Double Hinged Door Lock
47-0520-245	1001883	Kit, Casters Transfer - No Wheels
47-0520-246		Kit, CD14 LED Conversion