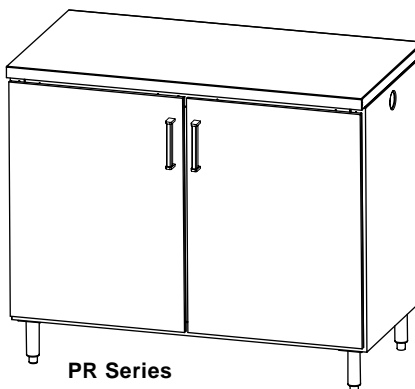
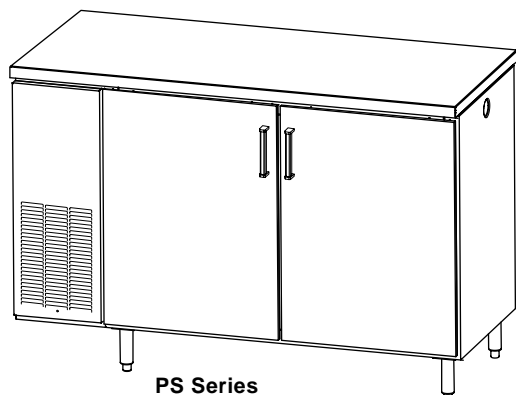


INSTALLATION AND OPERATION INSTRUCTIONS

CUSTOM PASS-THRU BACK BAR CABINET — SELF CONTAINED AND REMOTE

MODEL NOS.



PS Series 

PR Series



ANSI / NSF #7

IMPORTANT INFORMATION

Fill out the enclosed warranty card and mail to the Perlick Corporation to register the warranty. If the card is not returned, the warranty period will begin from the date the equipment is shipped from the factory.

This manual has been prepared to assist you in the installation of your Cabinet and to acquaint you with its operation and maintenance.

We dedicate considerable time to ensure that our products provide the highest level of customer satisfaction. If service is required, your dealer can provide you with a list of qualified service agents. For your own protection, never return merchandise for credit without our approval.

We thank you for selecting a Perlick product and assure you of our continuing interest in your satisfaction.

WARNING: When lifting, the full weight of the cabinet must be supported. Lift from the cabinet base and not from the top. Improper lifting can result in severe damage to the cabinet.

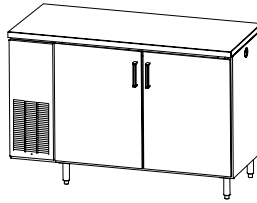
Table of Contents

PREPARING THE CABINET

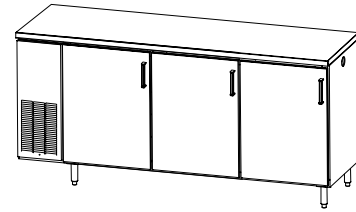
Specifications.....	2,3
List of Included Parts.....	4
Tools Required.....	4
Plumbing.....	4
Electrical.....	4
Uncrating and inspection.....	4
Placing the Cabinet.....	4
Leveling the Cabinet.....	4
Installing Casters and Legs.....	4
Installing Base Plate.....	4
Refrigeration and Temperature Control.....	5
Cleaning the Cabinet.....	5
Replacement Parts.....	6
Cleaning Stainless Steel.....	7
Wiring Diagram.....	8



Installation and Operating Instructions Sizes and Specifications, Standard Pass-Thru Back Bar Cabinets – Self Contained



PS2D



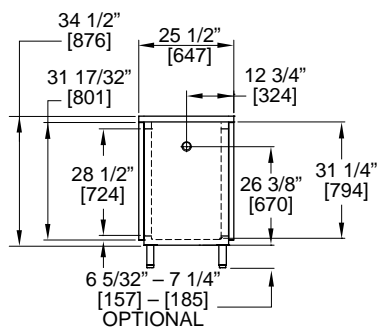
PS3D

MODEL NUMBERS

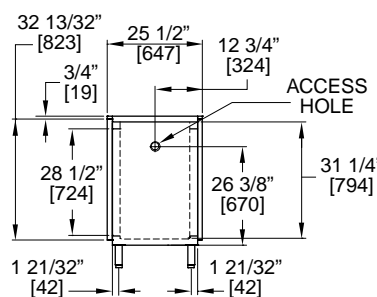
BASE CABINET	BLACK	PS2DP	PS3DP
	STAINLESS	PS2DS	PS3DS

SPECIFICATIONS

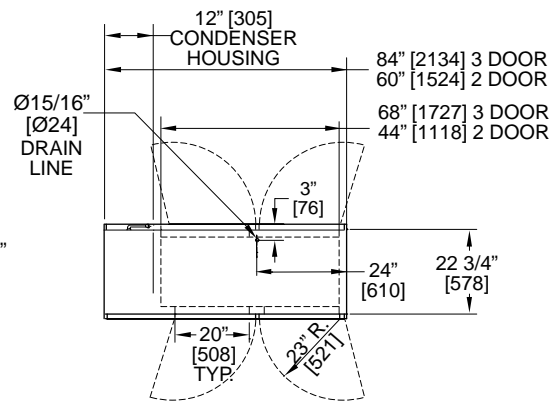
NUMBER OF DOORS (Each Side)	2	3
CABINET LENGTH INCHES (mm)	60" (1524)	84" (2134)
CASE CAPACITY (12oz. Long Neck Bottles)	12.25	20.9
CONDENSING UNIT H.P.	1/4	1/3
AMPS	7	9.1
SHIP WT lbs. (kg)	380 (172)	490 (222)
INTERIOR	Door sills are 14 gauge stainless steel supported by a 12 gauge angle bracket located inside the floor panel and running the entire length of the cabinet. Floor pan, walls and ceiling are 20 gauge, type 304 stainless steel. Two vinyl coated shelves with pilaster strips and four interior lights are included.	
EXTERIOR	Black Model: Front, back and ends are 20 gauge black powder coated steel. Top is 20 gauge galvanize steel. Bottom is 20 gauge stainless steel. Stainless Models: Front, ends and bottom are 20 gauge stainless steel.	
DOORS	Handles are black vinyl with chrome ends. Hinges are stainless steel. Choice of door styles are listed below. (See modifications to base cabinet). Specify the door style by listing the description for each door, starting from left to right on cabinet front, then from left to right on the back. The condensing unit is on the left side of the front and the right side on the back. Also indicate left or right hinging for the doors.	
REFRIGERATION	R134a capillary tube-type. Adjustable temperature control. Self defrosting. Pull out condensing unit.	
ELECTRICAL	115V, 60 Hz., 1 phase AC. Furnished with 3-prong, 6 foot rubber cord. Contact Perlick for other voltage/frequency requirements.	
PLUMBING	Cabinet comes with 25' of 1/2" vinyl tubing for evaporator drain. The tubing exits from the center bottom of the cabinet through a 1 5/16" Dia. hole in back of the mullion.	
INSULATION	Foamed-in-place polyurethane insulation, 2" wall's.	
MODIFICATIONS TO BASE CABINETS	<ul style="list-style-type: none"> Black powder coated steel exterior Stainless steel exterior Unfinished top (Galvanized steel) Stainless steel top Laminated top Door Finishes <ul style="list-style-type: none"> Black powder coated steel door Laminated door Field laminated door Stainless door Laminated stainless door Glass door with black frame Glass door with stainless frame Glass door with laminated frame 	
OPTIONAL ACCESSORIES	<ul style="list-style-type: none"> Laminated end Stainless end Adjustable legs Legs with baseplate Condensate Evapaway kit Divided shelving Beer dispensing kits (3 door only) 	



Cabinet End View with Factory Finished Top
Note door height



Cabinet End View with Field Finished Top
Note door height

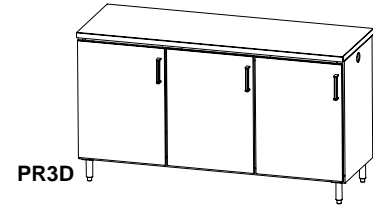
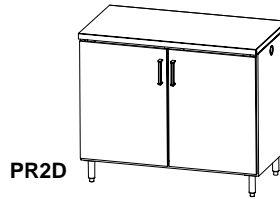


Top View with Factory Top



Perlick is committed to continuous improvement. Therefore, we reserve the right to change specifications without prior notice.

Installation and Operating Instructions Sizes and Specifications, Standard Pass-Thru Back Bar Cabinets – Remote

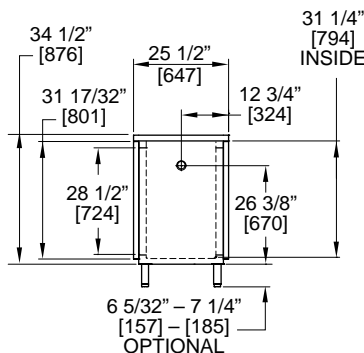


MODEL NUMBERS

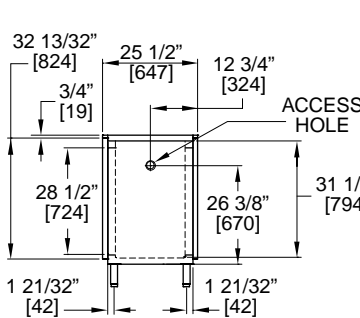
BASE CABINET	BLACK	PR2DP	PR3DP
	STAINLESS	PR2DS	PR3DS

SPECIFICATIONS

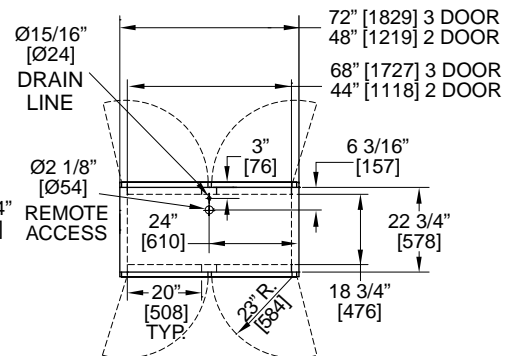
NUMBER OF DOORS (Each Side)	2	3
CABINET LENGTH INCHES (mm)	48" (1219)	72" (1829)
CASE CAPACITY (12oz. Long Neck Bottles)	12.25	20.9
AMPS	.9	.9
BTU/HR	2060	2500
SHIP WT lbs. (kg)	310 (141)	400 (181)
INTERIOR	Door sills are 14 gauge stainless steel supported by a 12 gauge angle bracket located inside the floor panel and running the entire length of the cabinet. Floor pan, walls and ceiling are 20 gauge, type 304 stainless steel. Two vinyl coated shelves with pilaster strips and four interior lights are included.	
EXTERIOR	Black Model: Front, back and ends are 20 gauge black powder coated steel. Top is 20 gauge galvanized steel. Bottom is 20 gauge stainless steel. Stainless Models: Front and ends are 20 gauge stainless steel.	
DOORS	Handles are black vinyl with chrome ends. Hinges are stainless steel. Choice of door styles are listed below. (See modifications to base cabinet). Specify the door style by listing the description for each door, starting from left to right on cabinet front, then from left to right on the back. The condensing unit is on the left side of the front and the right side on the back. Also indicate left or right hinging for the doors.	
REFRIGERATION	Evaporator can operate with most common refrigerants - exception NH ₃ .	
ELECTRICAL	115V, 60 Hz., 1 phase AC. Contact Perlick for other voltage/frequency requirements.	
PLUMBING	Cabinet comes with 25' of 1/2" vinyl tubing for evaporator drain. The tubing exits from the center bottom of the cabinet through a 1 5/16" hole in back of the mullion.	
INSULATION	Foamed-in-place with polyurethane insulation, 2" wall's.	
MODIFICATIONS TO BASE CABINETS	<ul style="list-style-type: none"> Black powder coated steel exterior Stainless steel exterior Unfinished top (Galvanized) Stainless steel top Laminated top Door Finishes <ul style="list-style-type: none"> Black powder coated steel door Laminated door Field laminated door Stainless door Laminated stainless door Glass door with black frame Glass door with stainless frame Glass door with laminated frame 	
OPTIONAL ACCESSORIES	<ul style="list-style-type: none"> Laminated end Stainless end Adjustable legs Legs with baseplate Divided shelving Condensate Evapaway kit Beer dispensing kits (3 door only) 	



Cabinet End View with Field Finished Top
Note door height



Cabinet End View with Factory Finished Top
Note door height



Top View with Factory Top

General Information – Standard Pass-Thru Back Bar Cabinets

Parts List

- (2) Shelves Per Door.
- Interior Lights.
- Shelf Clips.

Tools Required

- #2 Phillips Screwdriver.
- 10" Crescent Wrench.
- 3/8" Nut driver.
- 9/16" Allen Wrench.
- Power Drill or Driver (*for leg installation*).

Plumbing

Self-contained models: none required.
Condensate evaporates automatically.

Electrical

The cabinet must be connected to a separately fused power source (see electrical specification plate) and grounded in accordance with National and Local Electrical Codes. Caution: Do not attempt to operate the equipment on any other power source than that listed on the Electrical Specification plate.

Uncrating and Inspection

Remove all crating material before operating. Carefully inspect cabinet for hidden damage. If damage is discovered, file your claim immediately with the transportation company. Perlick is not responsible for damage in transit.

Placing the Cabinet

Push the cabinet into place using rollers when necessary. Important: Proper air flow around the condensing unit is necessary for efficient operation. Never obstruct the air flow in and out of the condensing unit compartment.

Leveling the Cabinet

When the cabinet is in place, check installation with a carpenter's level. When perfectly level, accumulated water will drain out. A slight pitch to the drain side will not harm the cabinet. Water may accumulate if cabinet is pitched to the opposite side.

Installing Casters or Legs (Optional)

Attach casters or legs to cabinet bottom in holes provided. Use the supplied 1/4"- 20 x 3/4" hex head self-tapping machine screws.

Installing Base Plate (Optional)

Attach brackets to cabinet bottom in holes provided. Use #10 self-drilling hex sheet metal screws (see separate instructions). When returning cabinet to upright position, be careful not to bend brackets.

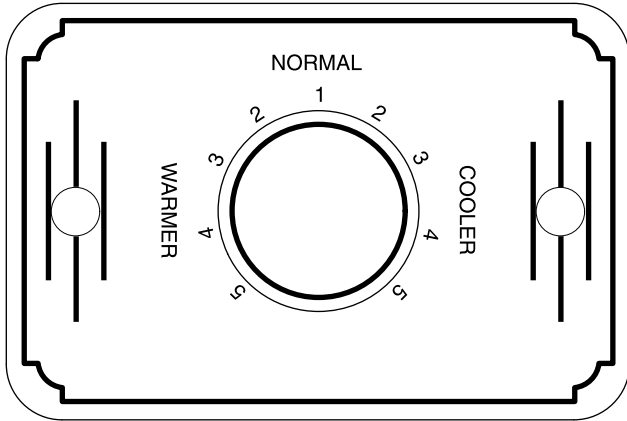


Perlick is committed to continuous improvement. Therefore, we reserve the right to change specifications without prior notice.

Preparing the Cabinet for Use — Standard Pass-Thru Back Bar Cabinets

Refrigeration and Temperature Control

The Back Bar Cabinet is equipped with a heavy-duty refrigeration system designed to automatically maintain a storage temperature of 36-41 degrees F. The control is factory set at 38 degrees F.



To Adjust the Temperature:

The temperature control is inside the cabinet on the right-hand side of the evaporator fan panel assembly. You will need a screwdriver to turn the adjusting screw. Make small adjustments until the desired temperature is achieved.

- **Colder Temperatures:** Turn the adjusting screw clockwise (to the right)
- **Warmer Temperatures:** Turn the adjusting screw counterclockwise (to the left.)

The condenser fan motor turns off and on with the condensing unit. The evaporator fan motor runs continuously. The fan motors are lifetime lubricated and will require no oiling.

NOTE: Cabinet temperatures lower than 34° will not allow for proper defrosting of the evaporator coil. If defrosting is necessary, turn the control knob to the OFF position until coil is defrosted.

Cleaning the Cabinet:

- Disconnect all power prior to cleaning.
- Use a mild detergent and water to clean the inside and outside of the cabinet.
- Inspect and clean the fan, evaporator coil and light channel areas as necessary.
- Dry thoroughly.

CAUTION: Never use a scouring pad or abrasive cleaners.

Cleaning the Condenser:

Use a stiff brush to clean the dirt from the front surface of the condenser. Keeping the condenser free from dust and dirt will ensure efficient operation.

CAUTION: Do not bend the fins while brushing the front of the condenser.

Replacement Parts – Standard Pass-Thru Back Bar Cabinets

MODEL NOS.	PS2D	PS3D
	PR2D	PR3D
All Models Serial Numbers Above 500,000		
CABINET HINGE		
Right hinge set (SS or Lam tops only)	63407R	63407R
Left hinge set (SS or Lam tops only)	63407L	63407L
Top hinge rail for door cabinet (Unfinished top)	61844-B1	64426-A1
Shelf kit, end compartment	57928	57928
Shelf kit, center compartment	N/A	57929
Left or right shelf	62307-2	62307-2
Center shelf	N/A	62308-2
Vertical partition	61830-1	61830-1
Shelf clip	C15875	C15875
Pilaster strip	C19271-1	C19271-1
Magnetic gasket for wood doors	62581A1	62581A1
Magnetic gasket for metal or glass doors	62085-1	62085-1
Self Contained Models Only		
Condensing Units (2 door models)		
Condensing unit 1/4 h.p. 115 volt, 60 hz.	C22647	N/A
Condensing unit (model UF110HBX)	515301063	N/A
Compressor (model FFI10HBX)	513200314	N/A
Fan motor assembly	215315009	N/A
Condenser coil	15352019	N/A
Terminal board	219101538	N/A
Overload protector	MRT20AGK5590	N/A
Relay	21351619	N/A
Capacitor (282-339 MFD. 155V)	13556529	N/A
Condensing Units (3 & 4 door models)		
Condensing unit 1/3 h.p. 115 volt	N/A	C22646
Condensing unit (model UF112HBX)	N/A	515301062
Compressor (model FFI12HBX)	N/A	513200003
Fan motor assembly	N/A	215315009
Condenser coil	N/A	15352019
Terminal board	N/A	219101538
Overload protector	N/A	MRT22AFZ5590
Relay	N/A	21351619
Capacitor (282-339 MFD. 155V)	N/A	13556532
Grille cover, black (unfinished top only)	65088-1	65088-1
Grille cover, SS (unfinished top only)	65088-2	65088-2
Grille cover, black (lam or SS tops only)	65087-1	65087-1
Grille cover, SS (lam or SS tops only)	65087-2	65087-2
Bulb clamp	C6634	C6634
Complete coil assembly	62210A1	62210A2
Evaporator fin coil	C17511-1	C17511-2
Temperature control	C14325	C14325
Wiring harness	61354-1	61354-1
Wiring harness jumper	65051	65051
Fan motor	C15239A	C15239A
5 1/2" Dia. fan blade	57699	57699
Fan guard assembly	C25395	C25395
Remote Models Only		
Coil assembly	62495A	62496A
Wiring harness	61362-1	61362-1

*Contact Perlick Milwaukee for complete door replacement. Cabinet serial no. required.



Perlick is committed to continuous improvement. Therefore, we reserve the right to change specifications without prior notice.

Cleaning Stainless Steel – Standard Pass-Thru Back Bar Cabinets

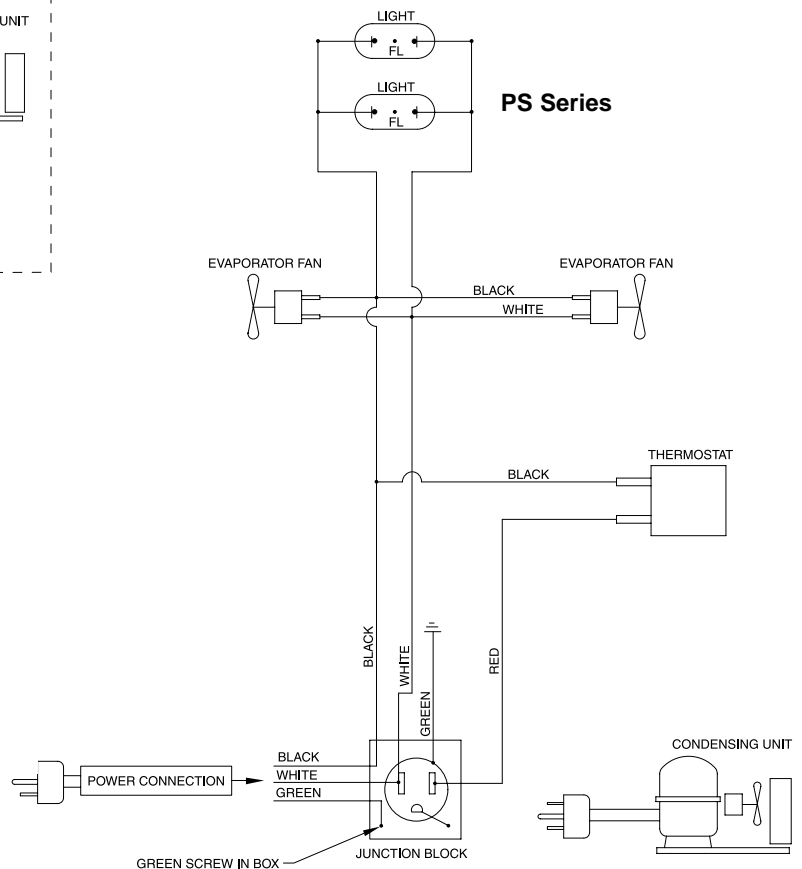
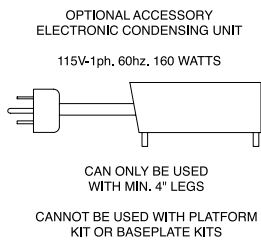
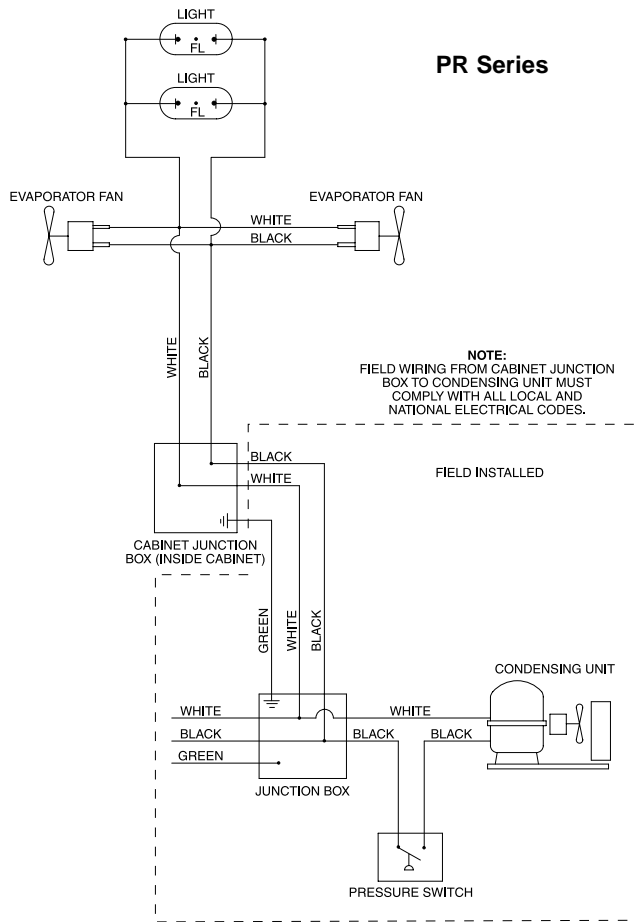
Recommended Cleaning Agents

JOB	CLEANING AGENT*	COMMENTS
Routine Cleaning	Soap, ammonia, detergent	Apply with sponge or cloth. Can be used on all finishes.
Fingerprints and smears	Areal 20, Lac-O-Nu, Lumin Wash, O’Cedar Cream Polish	Provides barrier film to minimize fingerprints. Can be used on all finishes.
Stubborn stains and Discolorations	Allchem Concentrated Cleaner, Samae, Twinkle, Zud Restoro, Grade F or FFF Italian Pumice, Whiting or Talc, Liquid Nu Steel, Copper’s or Revere Stainless Steel Cleaner, Lumin Cleaner, Sta-Clean, Cameo Copper Cleaner, Allen Polish Highlite, Penny-Brite, Copper Brite	Rub lightly, using dry or damp cloth in the direction of polish lines on the stainless steel.

** Use of propriety names is intended only to indicate a type of cleaner and does not constitute an endorsement.
Omission of any proprietary cleaner does not imply its inadequacy. All products should be used in strict accordance
with instructions on the package.*

NOTE: Do Not Use Steel Wool or Scouring Pads to clean stainless steel.

Wiring Diagram – Standard Pass-Thru Back Bar Cabinets



8300 West Good Hope Road • Milwaukee, WI 53223 • Phone 414-353-7060 • Fax 414-353-7069
Toll Free 800-558-5592 • E-Mail: Perlick@Perlick.com • www.Perlick.com

Perlick is committed to continuous improvement. Therefore, we reserve the right to change specifications without prior notice. Form No. Z2028A Rev. 08.03.04