

# Service Manual

AC/Rechargeable Shaver

Model No. **ES-LT7N**

Model No. **ES-LT5N**

Model No. **ES-LT3N**




NORTH AMERICA  
LATIN AMERICA  
CANADA

Please file and use this manual together with the service manual for Model No.ES8119, Order No.SD0812H60CE.

## **WARNING**

This service information is designed for experienced repair technicians only and is not designed for use by the general public. It does not contain warnings or cautions to advise non-technical individuals of potential dangers in attempting to service a product. Products powered by electricity should be serviced or repaired only by experienced professional technicians. Any attempt to service or repair the product or products dealt with in this service information by anyone else could result in serious injury or death.

## **IMPORTANT SAFETY NOTICE**

There are special components used in this equipment which are important for safety. These parts are marked by  in the Schematic Diagrams, Circuit Board Diagrams, Exploded Views and Replacement Parts List. It is essential that these critical parts should be replaced with manufacturer's specified parts to prevent shock, fire or other hazards. Do not modify the original design without permission of manufacturer.

## TABLE OF CONTENTS

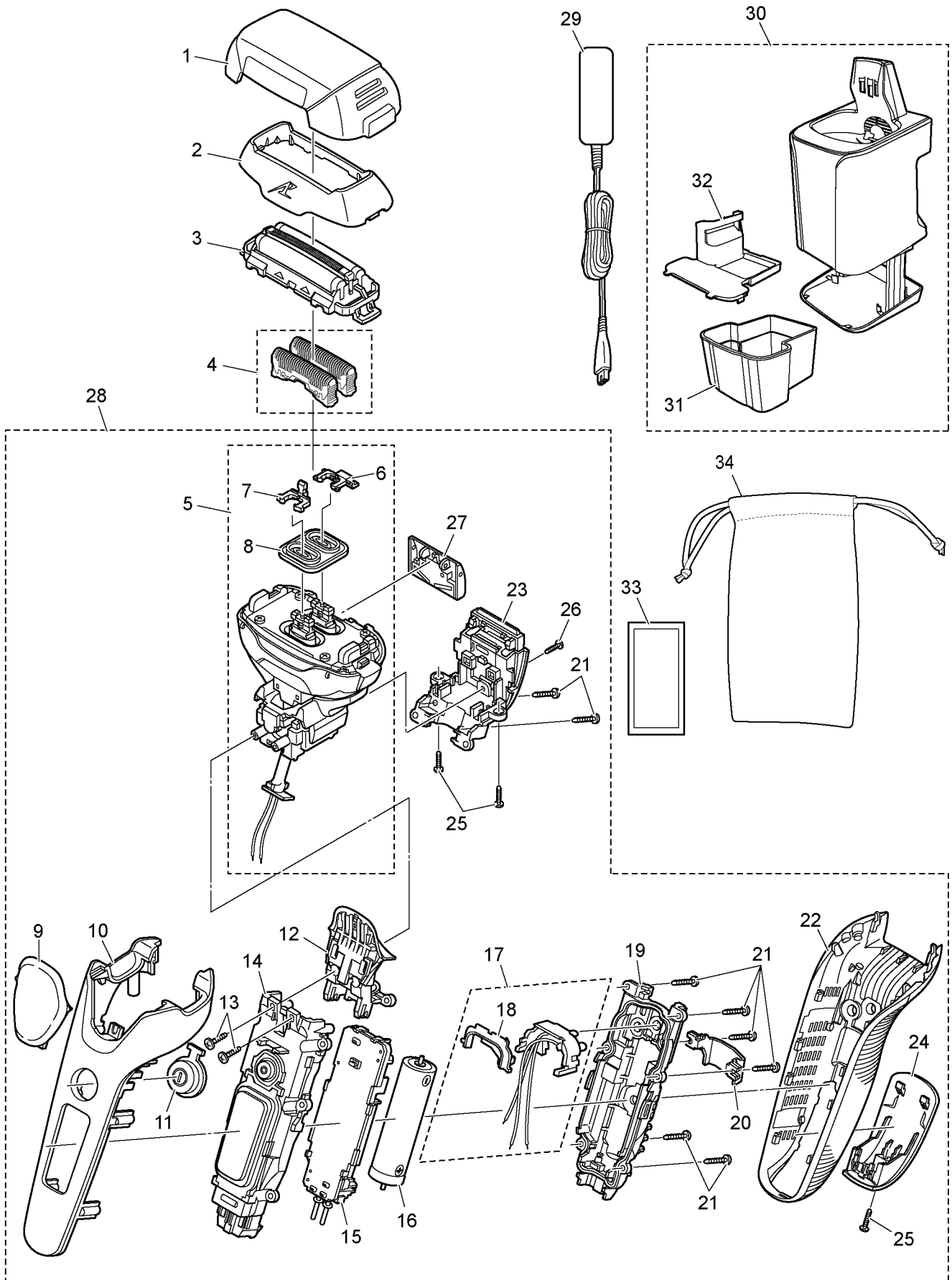
	PAGE	PAGE
1 EXPLODED VIEW & REPLACEMENT PARTS LIST ----	2	

# Panasonic®

© Panasonic Corporation 2015 Unauthorized copying and distribution is a violation of law.

# 1 EXPLODED VIEW & REPLACEMENT PARTS LIST

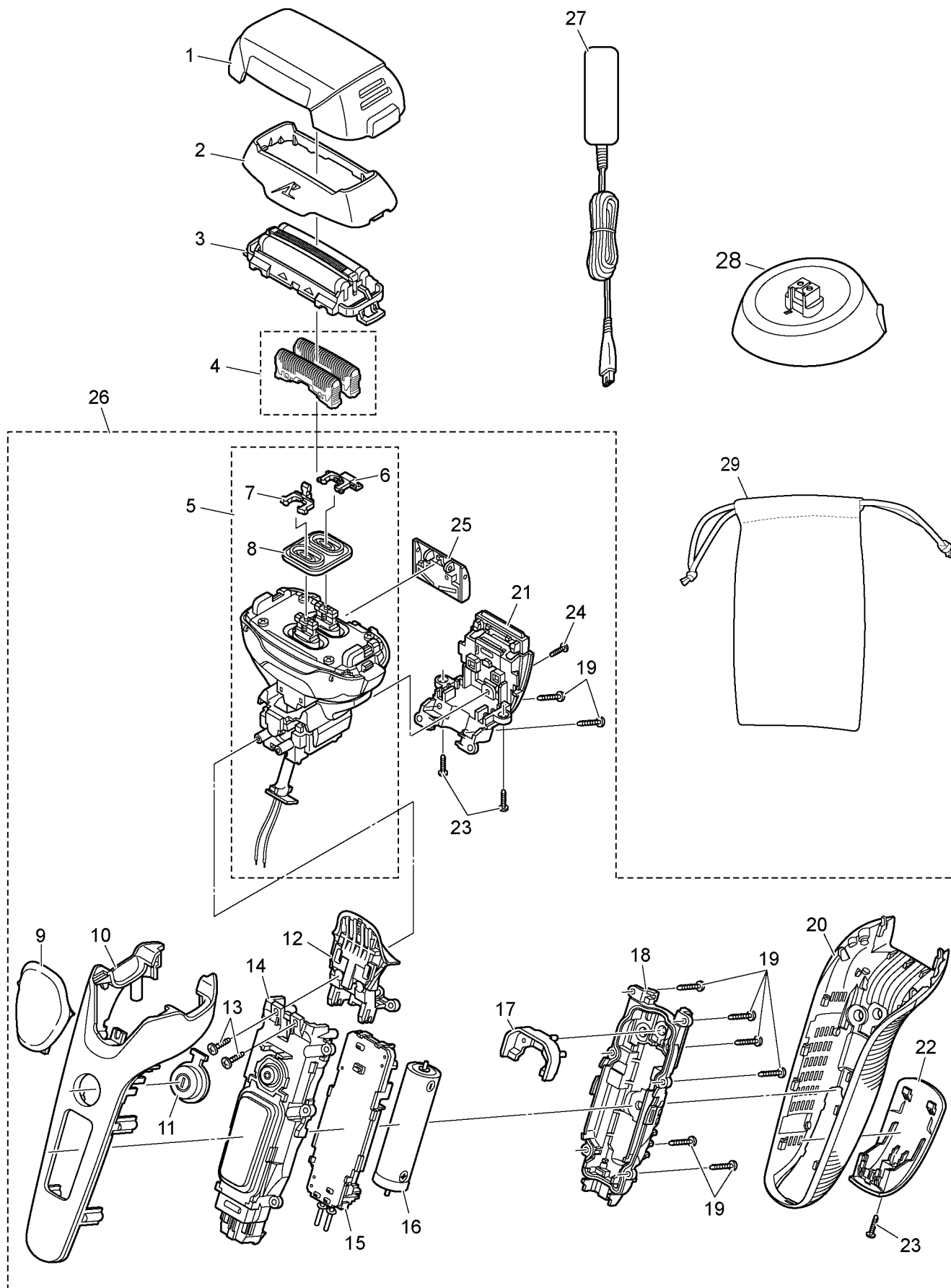
## 1.1. EXPLODED VIEW ES-LT7N



## 1.2. REPLACEMENT PARTS LIST ES-LT7N

Safety	Ref. No.	Part No.	Part Name & Description	Quantity	Remarks
	1	WESLT8NX7158	PROTECTIVE CAP	1	
	2	WESLT7NS0048	OUTER FOIL FRAME	1	
	3	WES9089P	OUTER FOIL	1	
	4	WES9068PC	INNER BLADE	1ST	
	5	WESLT8NL1008	LINEAR MOTOR ASSEMBLY	1	
	6	WESLT8NL1088	TRIMMER DRIVING BAR	1	
	7	WESLT8NL1078	SLIT BLADE DRIVING BAR	1	
	8	WESLT8NL0328	WATERPROOF RUBBER	1	
	9	WESLT8NK3068	FINGER PANEL	1	
	10	WESLT2NS3058	FRONT PANEL	1	
	11	WESLT8NS3568	SWITCH BUTTON	1	
	12	WESLT8NL3388	SUSPENSION	1	
	13	WESLT8NL6048	TAPPING SCREW	2	
	14	WESLT7NL3068	HOUSING A	1	
	15	WESLT7NL2128	MODULE	1	
	16	WESLV95L2508	RECHARGEABLE BATTERY	1	LI-ION
	17	WES8258L0497	TERMINAL BASE	1	
	18	WES8232L0498	REAR COVER	1	
	19	WESLT8NL3088	HOUSING B	1	
	20	WES8238L0487	CONNECTING PLATE	1	
	21	WES8176L6007	P TIGHT SCREW	8	M2-12
	22	WESLT8NK3368	REAR PANEL	1	
	23	WESLT8NK3138	SUSPENSION COVER	1	
	24	WESLT7NK3128	BOTTOM COVER	1	
	25	WES8176L6057	TAPPING SCREW	3	M2-8
	26	WES8238L6007	P TIGHT SCREW	1	M2-8
	27	WESLT8NK1508	TRIMMER	1	
	28	WESLT7NS3038	BODY BLOCK	1	
	29	WESLT7NK7658	CHARGING ADAPTOR	1	A-2
	30	WESLT8NK4218	CHARGING STAND	1	
	31	WESLV92K7358	CLEANING LIQUID UNIT	1	
	32	WESLV92K7367	CLEANING LIQUID FILTER	1	
	33	WES4L03-803	DETERGENT	1	3PCS/BOX
	34	WESLT6NK7008	SOFT CASE	1	
	-	WESLT7NS8008	INDIVIDUAL BOX	1	NORTH AMERICA
	-	WESLT7NS8009	INDIVIDUAL BOX	1	CANADA, LATIN AMERICA
	-	WESLT7NS8108	OPERATING INSTRUCTIONS	1	

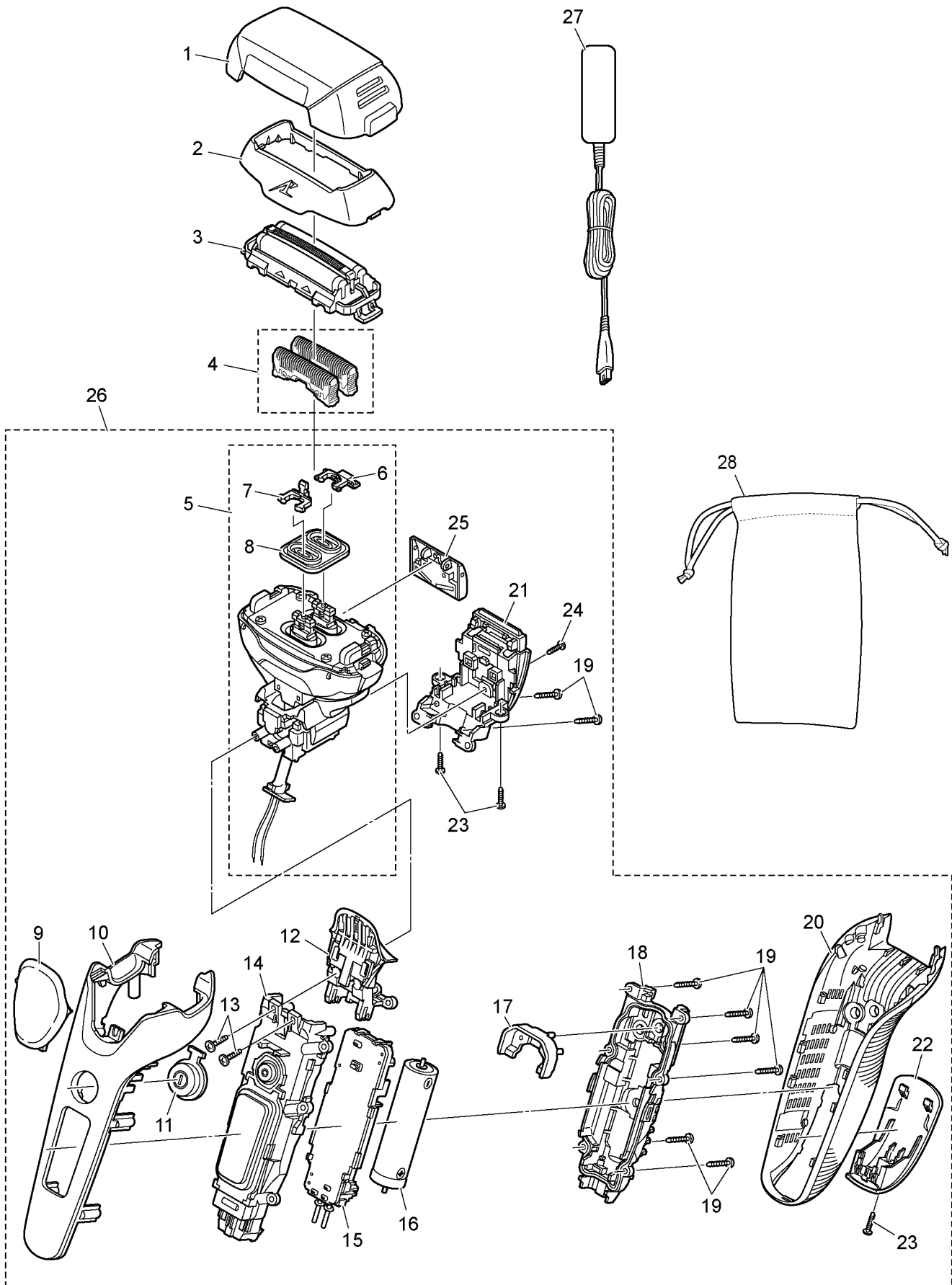
### 1.3. EXPLODED VIEW ES-LT5N



## 1.4. REPLACEMENT PARTS LIST ES-LT5N

Safety	Ref. No.	Part No.	Part Name & Description	Quantity	Remarks
	1	WESLT8NX7158	PROTECTIVE CAP	1	
	2	WESLT5NH0048	OUTER FOIL FRAME	1	
	3	WES9089P	OUTER FOIL	1	
	4	WES9068PC	INNER BLADE	1ST	
	5	WESLT8NL1008	LINEAR MOTOR ASSEMBLY	1	
	6	WESLT8NL1088	TRIMMER DRIVING BAR	1	
	7	WESLT8NL1078	SLIT BLADE DRIVING BAR	1	
	8	WESLT8NL0328	WATERPROOF RUBBER	1	
	9	WESLT8NK3068	FINGER PANEL	1	
	10	WESLT5NH3058	FRONT PANEL	1	
	11	WESLT8NS3568	SWITCH BUTTON	1	
	12	WESLT8NL3388	SUSPENSION	1	
	13	WESLT8NL6048	TAPPING SCREW	2	
	14	WESLT5NL3068	HOUSING A	1	
	15	WESLT5NL2128	MODULE	1	
	16	WESLV95L2508	RECHARGEABLE BATTERY	1	LI-ION
	17	WES8255L0497	REAR COVER	1	
	18	WESLT8NL3088	HOUSING B	1	
	19	WES8176L6007	P TIGHT SCREW	8	M2-12
	20	WESLT8NK3368	REAR PANEL	1	
	21	WESLT8NK3138	SUSPENSION COVER	1	
	22	WESLT5NK3128	BOTTOM COVER	1	
	23	WES8176L6057	TAPPING SCREW	3	M2-8
	24	WES8238L6007	P TIGHT SCREW	1	M2-8
	25	WESLT8NK1508	TRIMMER	1	
	26	WESLT5NH3038	BODY BLOCK	1	
	27	WESLT7NK7658	CHARGING ADAPTOR	1	A-2
	28	WESLT5NK7188	CHARGING STAND	1	
	29	WESLT6NK7008	SOFT CASE	1	
	-	WESLT5NH8008	INDIVIDUAL BOX	1	NORTH AMERICA
	-	WESLT5NH8009	INDIVIDUAL BOX	1	CANADA, LATIN AMERICA
	-	WESLT5NH8108	OPERATING INSTRUCTIONS	1	

### 1.5. EXPLODED VIEW ES-LT3N



## 1.6. REPLACEMENT PARTS LIST ES-LT3N

Safety	Ref. No.	Part No.	Part Name & Description	Quantity	Remarks
	1	WESLT8NX7158	PROTECTIVE CAP	1	
	2	WESLT3NK0048	OUTER FOIL FRAME	1	
	3	WES9089P	OUTER FOIL	1	
	4	WES9068PC	INNER BLADE	1ST	
	5	WESLT8NL1008	LINEAR MOTOR ASSEMBLY	1	
	6	WESLT8NL1088	TRIMMER DRIVING BAR	1	
	7	WESLT8NL1078	SLIT BLADE DRIVING BAR	1	
	8	WESLT8NL0328	WATERPROOF RUBBER	1	
	9	WESLT8NK3068	FINGER PANEL	1	
	10	WESLT3NK3058	FRONT PANEL	1	
	11	WESLT8NS3568	SWITCH BUTTON	1	
	12	WESLT8NL3388	SUSPENSION	1	
	13	WESLT8NL6048	TAPPING SCREW	2	
	14	WESLT5NL3068	HOUSING A	1	
	15	WESLT5NL2128	MODULE	1	
	16	WESLV95L2508	RECHARGEABLE BATTERY	1	LI-ION
	17	WES8255L0497	REAR COVER	1	
	18	WESLT8NL3088	HOUSING B	1	
	19	WES8176L6007	P TIGHT SCREW	8	M2-12
	20	WESLT8NK3368	REAR PANEL	1	
	21	WESLT8NK3138	SUSPENSION COVER	1	
	22	WESLT3NK3128	BOTTOM COVER	1	
	23	WES8176L6057	TAPPING SCREW	3	M2-8
	24	WES8238L6007	P TIGHT SCREW	1	M2-8
	25	WESLT8NK1508	TRIMMER	1	
	26	WESLT3NK3038	BODY BLOCK	1	
	27	WESLT7NK7658	CHARGING ADAPTOR	1	A-2
	28	WESLT6NK7008	SOFT CASE	1	
	-	WESLT3NK8008	INDIVIDUAL BOX	1	NORTH AMERICA
	-	WESLT3NK8009	INDIVIDUAL BOX	1	CANADA, LATIN AMERICA
	-	WESLT5NH8108	OPERATING INSTRUCTIONS	1	