

---

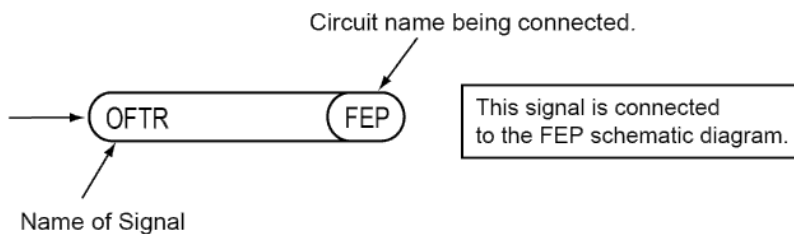
**Model No. : DMC-FZ2000/FZ2500 Schematic Diagram Note**

---

**IMPORTANT SAFETY NOTICE:**

COMPONENTS IDENTIFIED WITH THE MARK  HAVE THE SPECIAL CHARACTERISTICS FOR SAFETY. WHEN REPLACING ANY OF THESE COMPONENTS USE ONLY THE SAME TYPE.

1. Although reference number of the parts is indicated on the P.C.B. drawing and/or schematic diagrams, it is NOT mounted on the P.C.B. when it is displayed with "\$" mark.
2. It is only the "Test Round" and no terminal (Pin) is available on the P.C.B. when the TP (Test Point) indicated as "●" mark.
3. Use the parts number indicated on the Replacement Parts List .
4. Indication on Schematic diagrams:



5. It might be taking time for display and/or access of the Schematic Diagrams & P. C. B. having the heavy data volume.

---

**Model No. : DMC-FZ2000/FZ2500 Parts List Note**

---

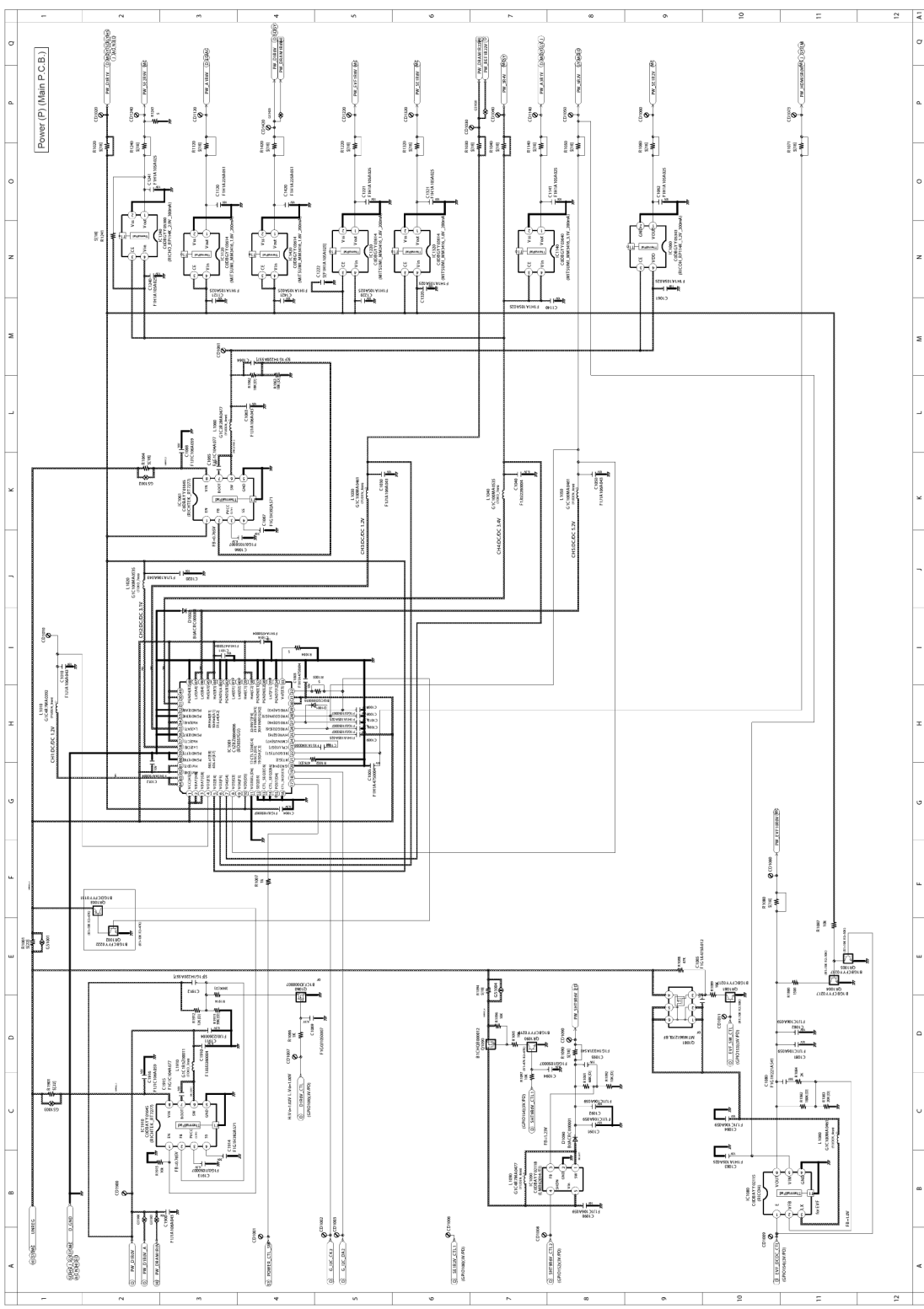
- Note:
1. \* Be sure to make your orders of replacement parts according to this list.
  2. **IMPORTANT SAFETY NOTICE**  
Components identified with the mark  $\triangle$  have the special characteristics for safety.  
When replacing any of these components, use only the same type.
  3. Unless otherwise specified,  
All resistors are in OHMS, K=1,000 OHMS. All capacitors are in MICRO-FARADS (uf), P=uuF.
  4. The marking (RTL) indicates the retention time is limited for this item. After the discontinuation of this assembly in production, it will no longer be available.
  5. Supply of CD-ROM or DVD, in accordance with license protection, is allowable as replacement parts only for customers who accidentally damaged or lost their own.

**E.S.D. standards for Electrostatically Sensitive Devices, refer to PREVENTION OF ELECTROSTATIC DISCHARGE (ESD) TO ELECTROSTATICALLY SENSITIVE (ES) DEVICES section.**

**Definition of Parts supplier:**

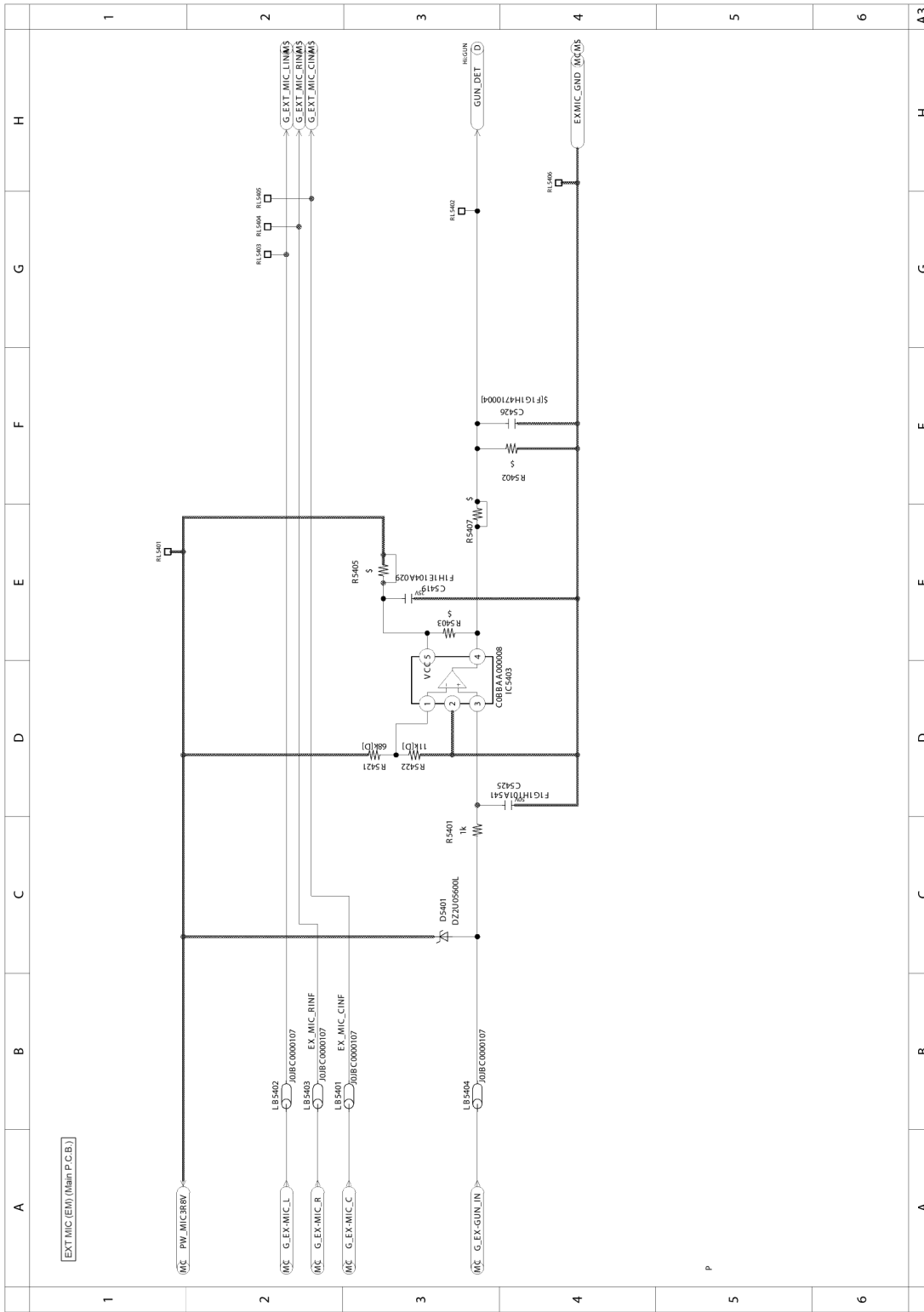
1. **Parts marked with [INBD] in the remarks column are supplied from AVC-IMAGING. Others are supplied from PAVCX.**

# Model No. : DMC-FZ2000/FZ2500 Power (P) (Main P.C.B.)

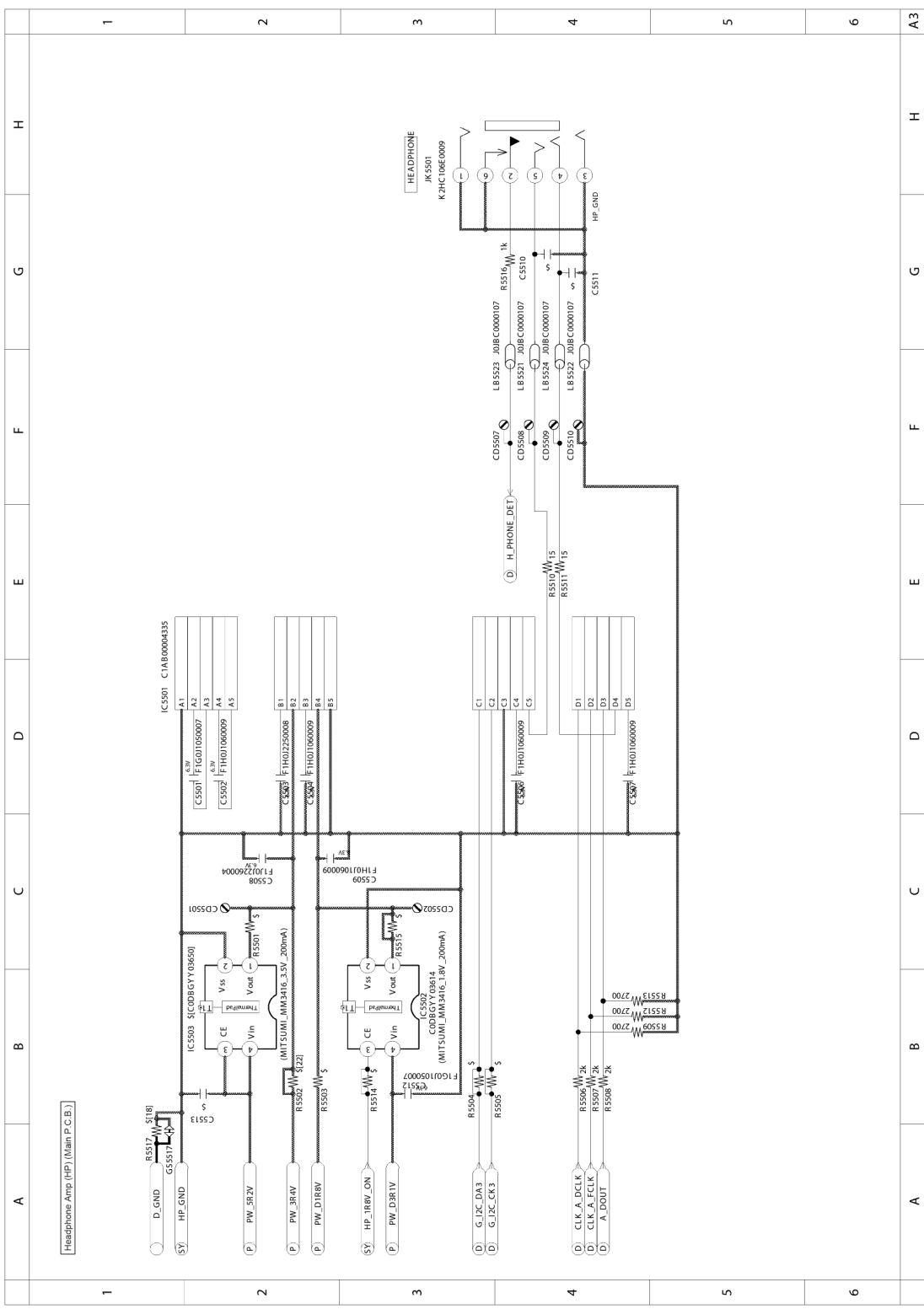




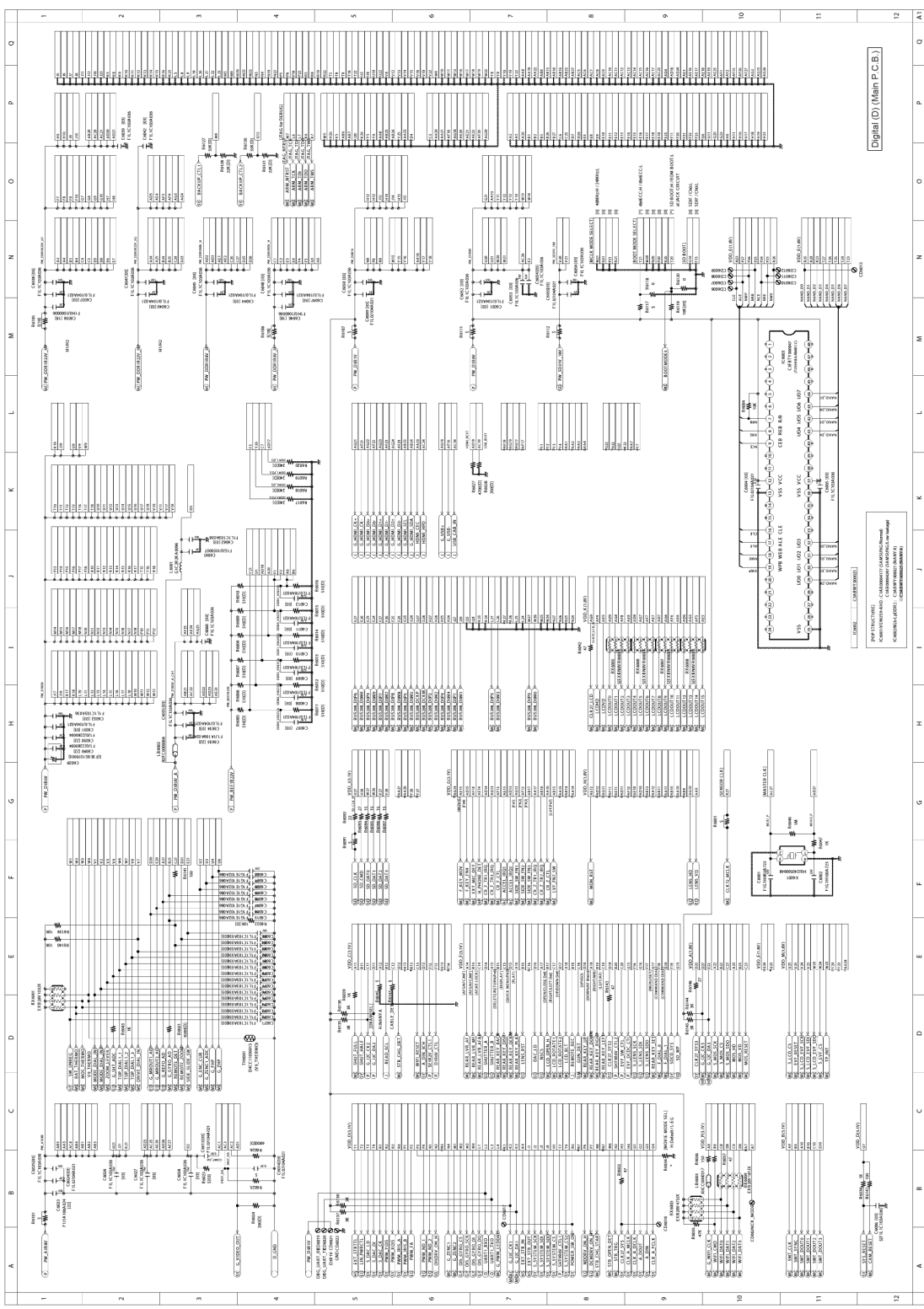
# Model No. : DMC-FZ2000/FZ2500 EXT MIC (EM) (Main P.C.B.)



# Model No. : DMC-FZ2000/FZ2500 Headphone Amp (HP) (Main P.C.B.)

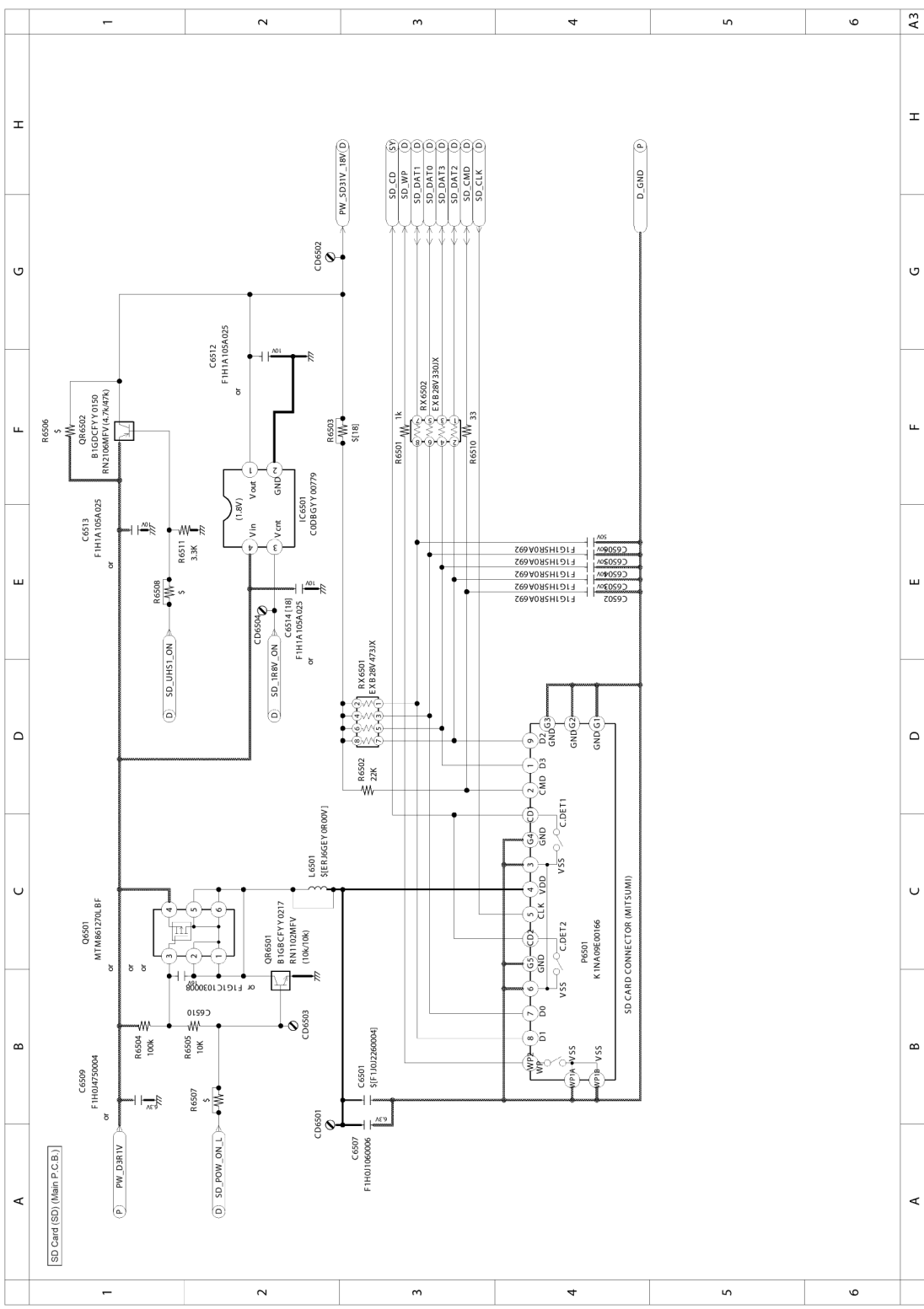


# Model No. : DMC-FZ2000/FZ2500 Digital (D) (Main P.C.B.)

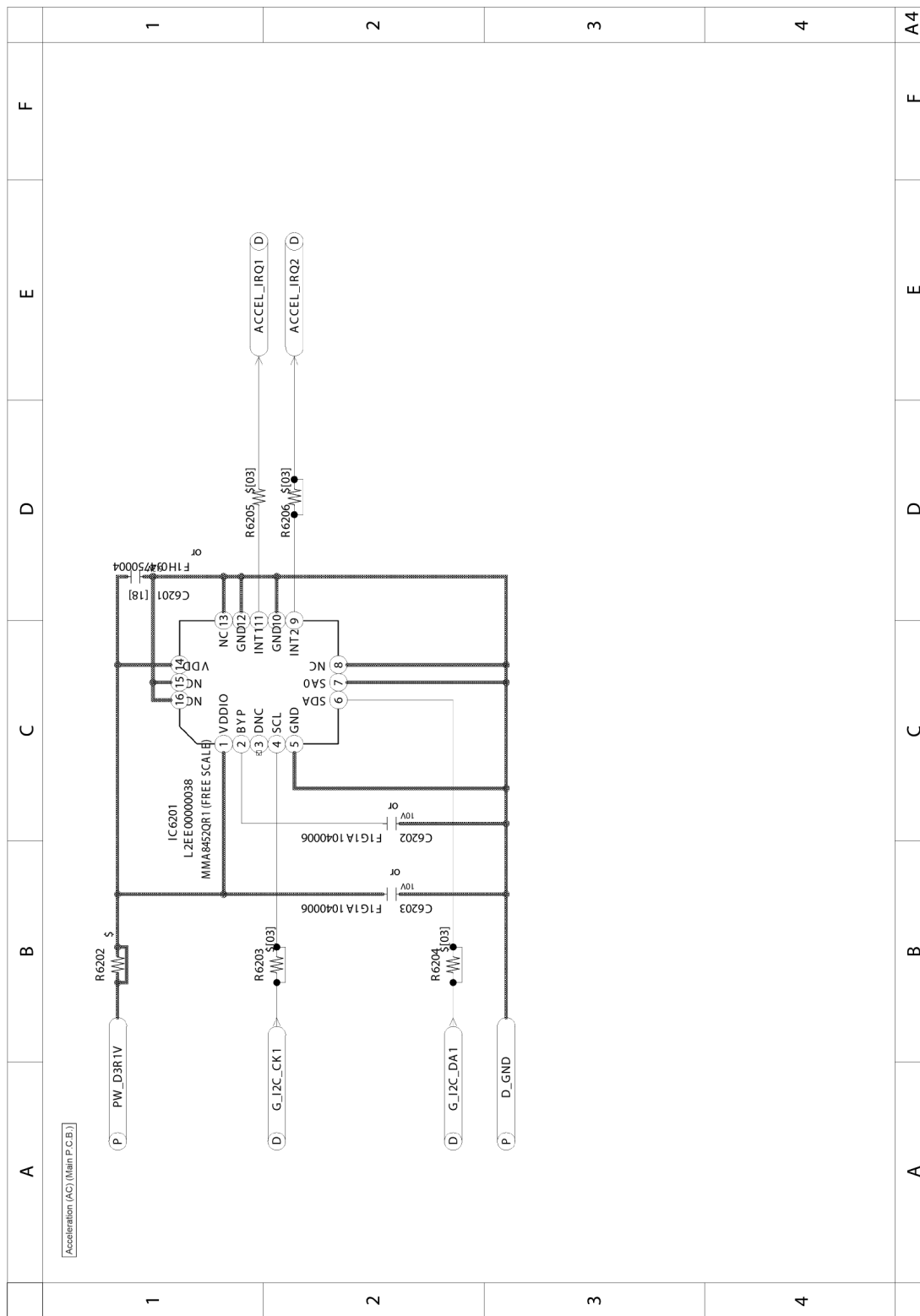


Digital (D) (Main P.C.B.)

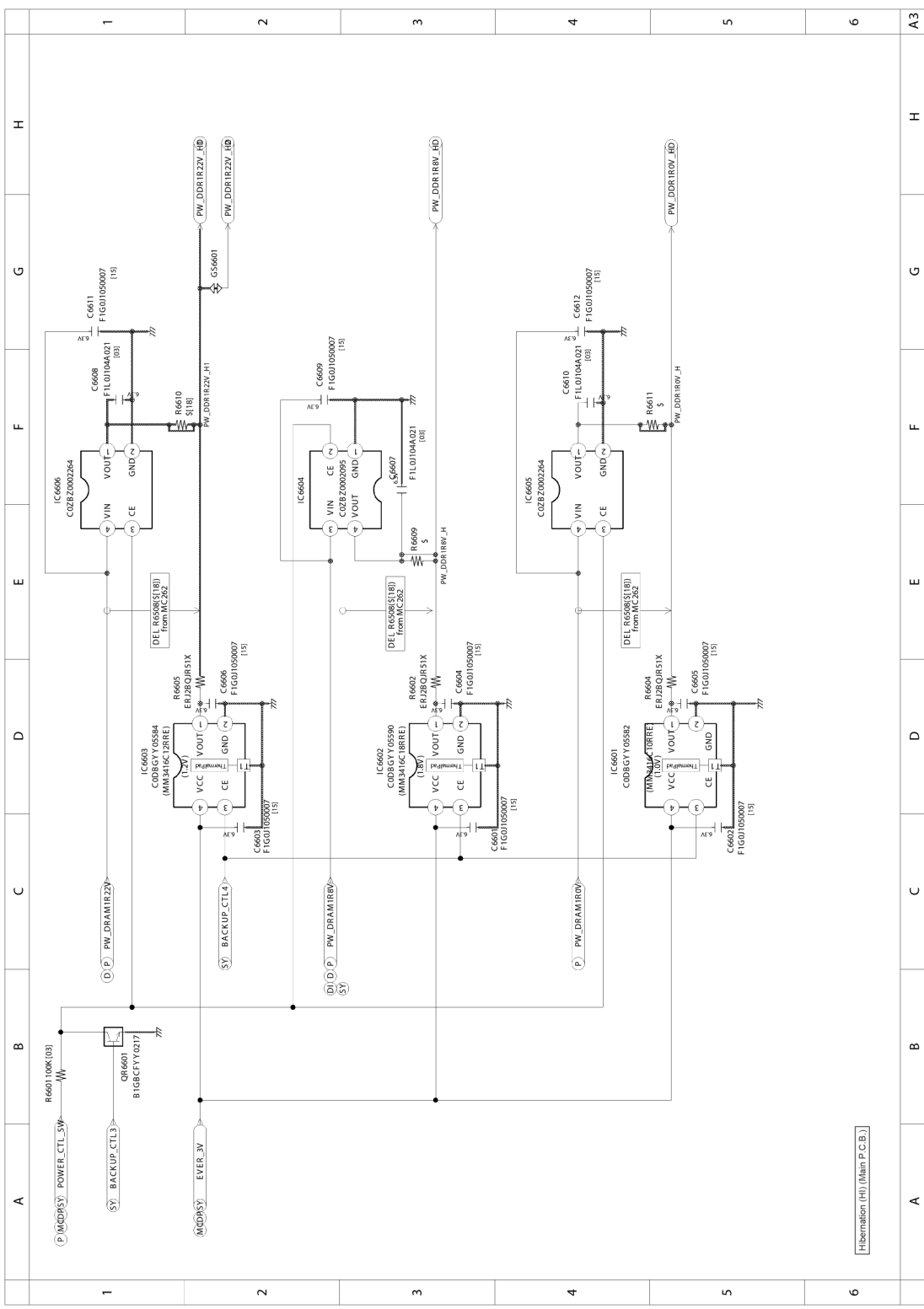
# Model No. : DMC-FZ2000/FZ2500 SD Card (SD) (Main P.C.B.)



**Model No. : DMC-FZ2000/FZ2500 Acceleration (AC) (Main P.C.B.)**

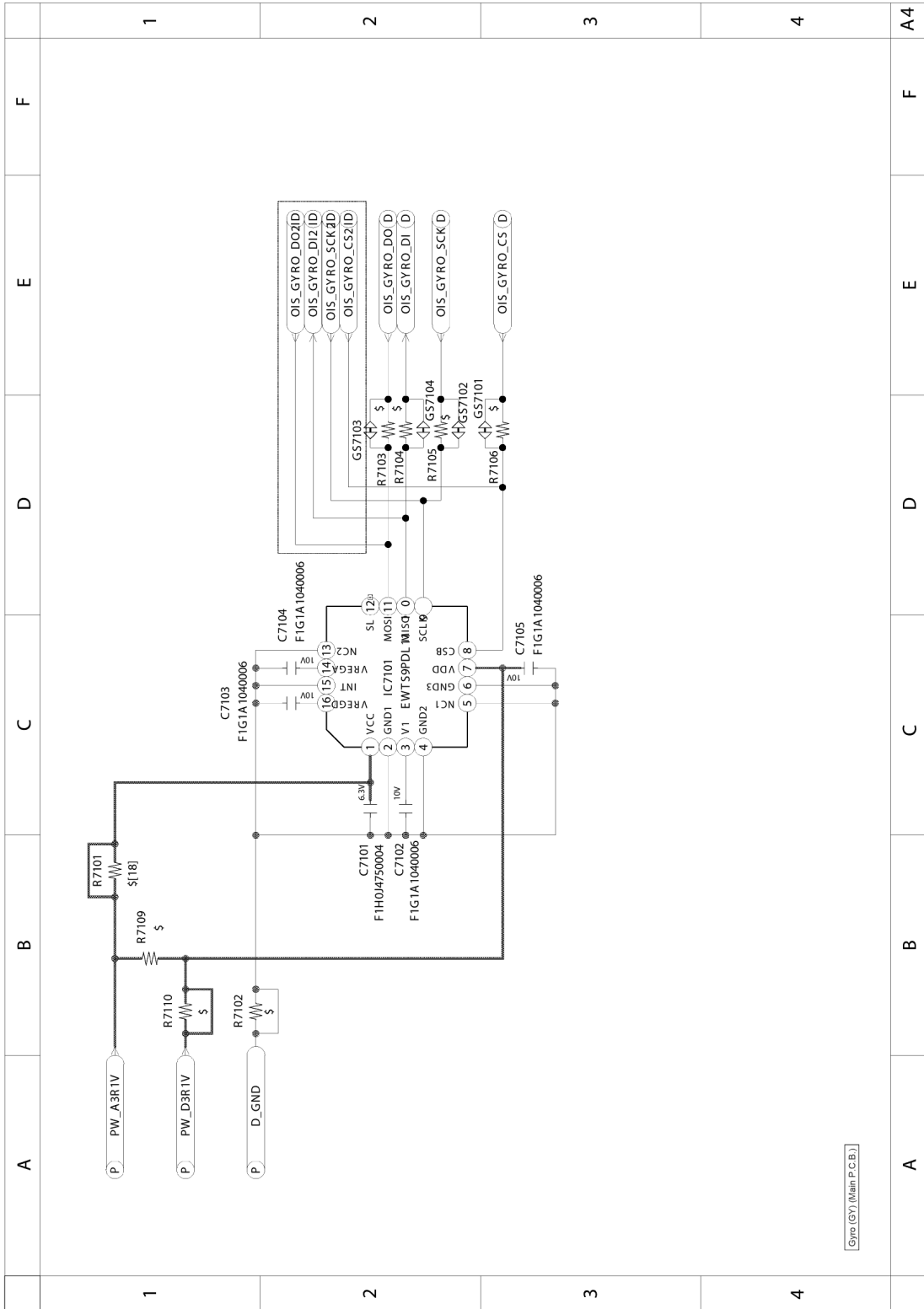


# Model No. : DMC-FZ2000/FZ2500 Hibernation (HI) (Main P.C.B.)



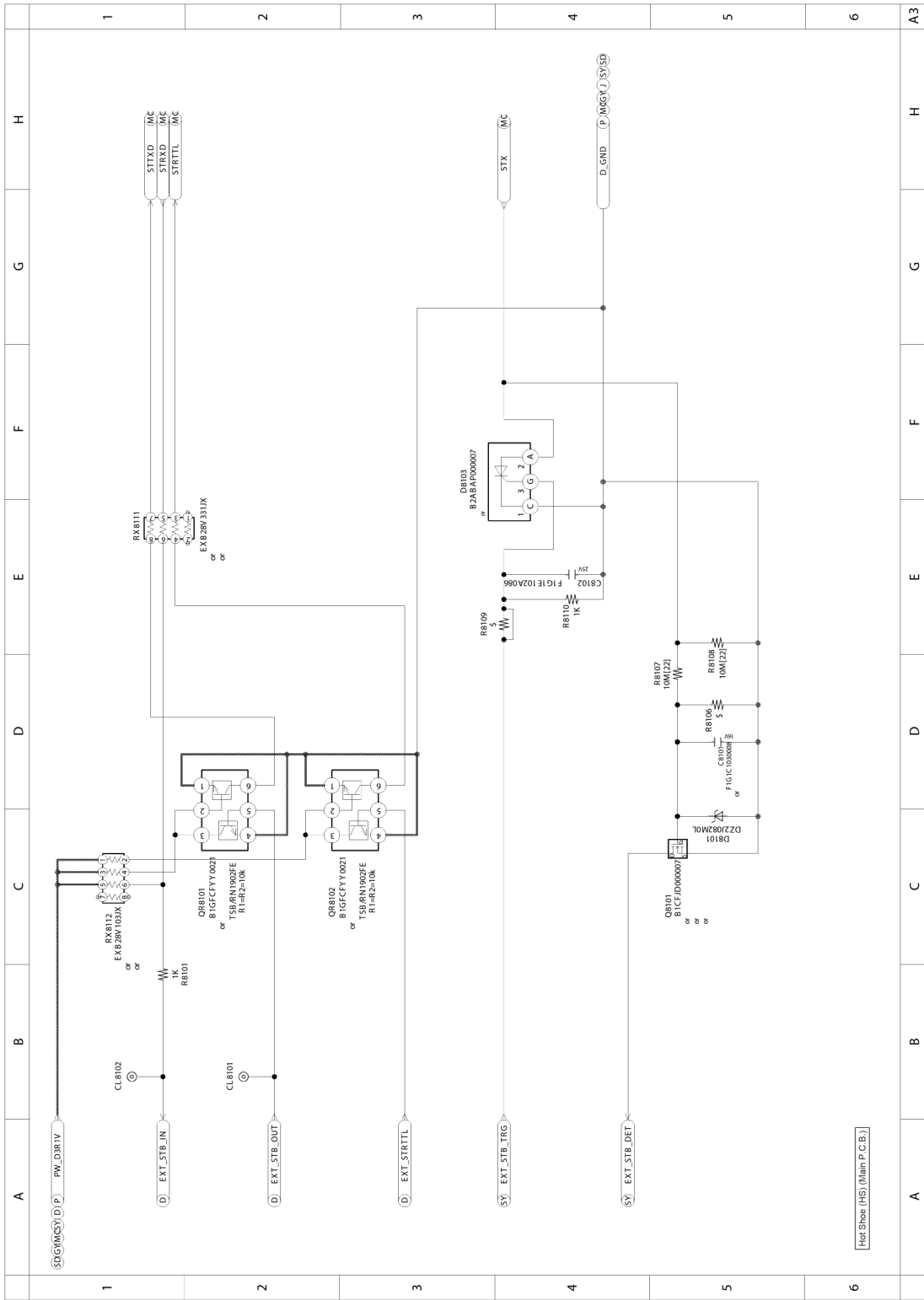
Hibernation (HI) (Main P.C.B.)

**Model No. : DMC-FZ2000/FZ2500 Gyro (GY) (Main P.C.B.)**





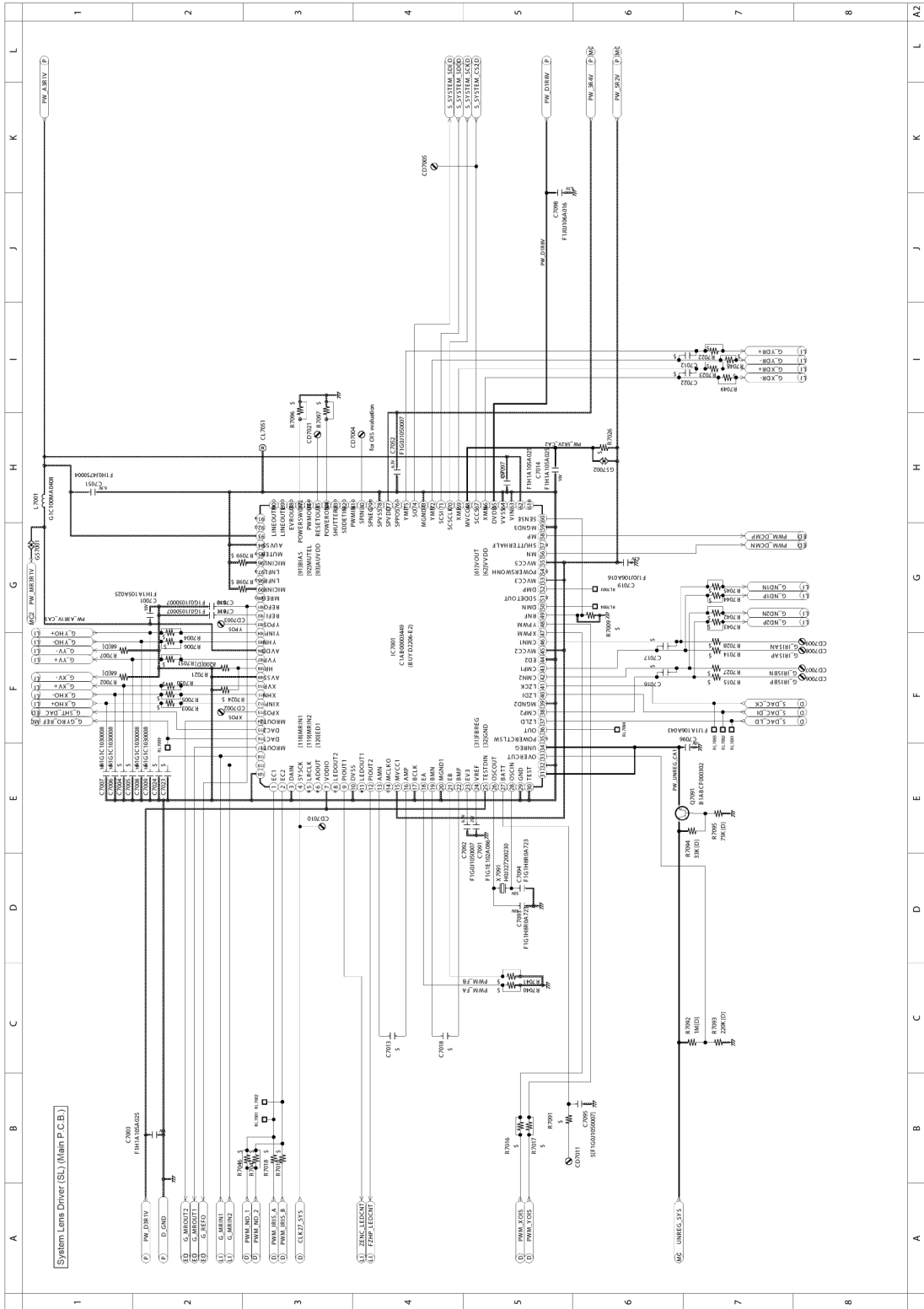
**Model No. : DMC-FZ2000/FZ2500 Hot Shoe (HS) (Main P.C.B.)**



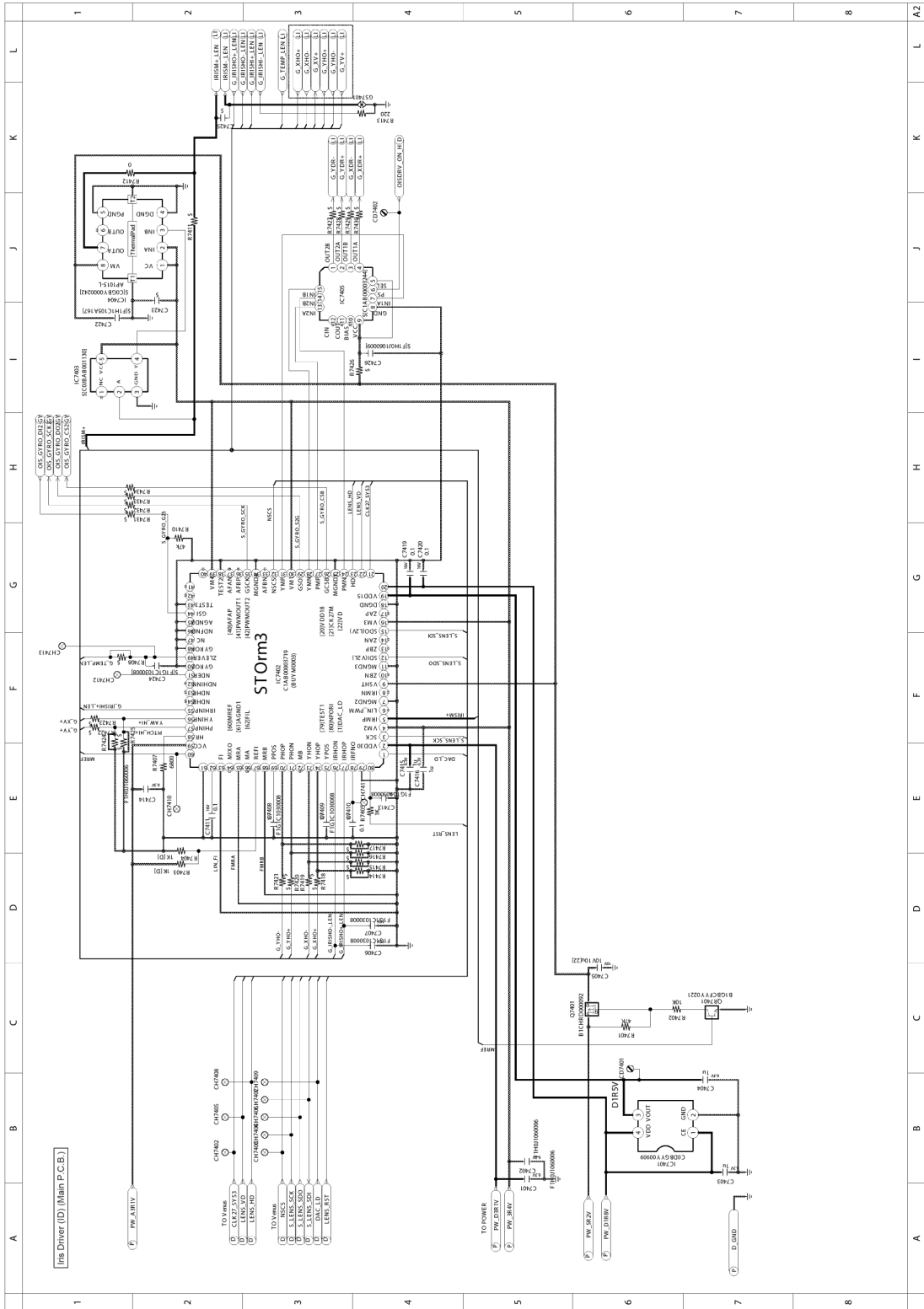
[Hot Shoe (HS) (Main P.C.B.)]



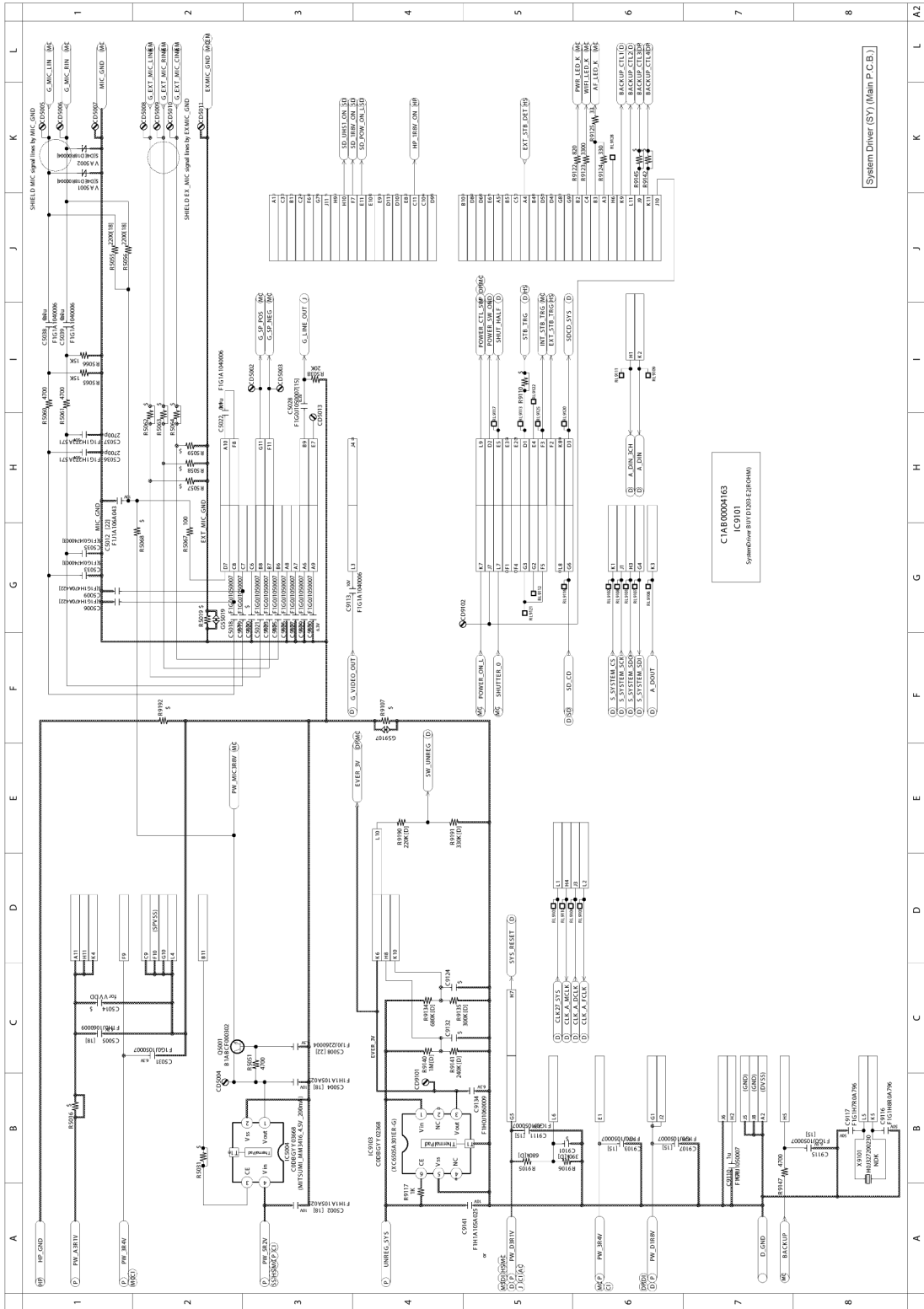
# Model No. : DMC-FZ2000/FZ2500 System Lens Driver (SL) (Main P.C.B.)



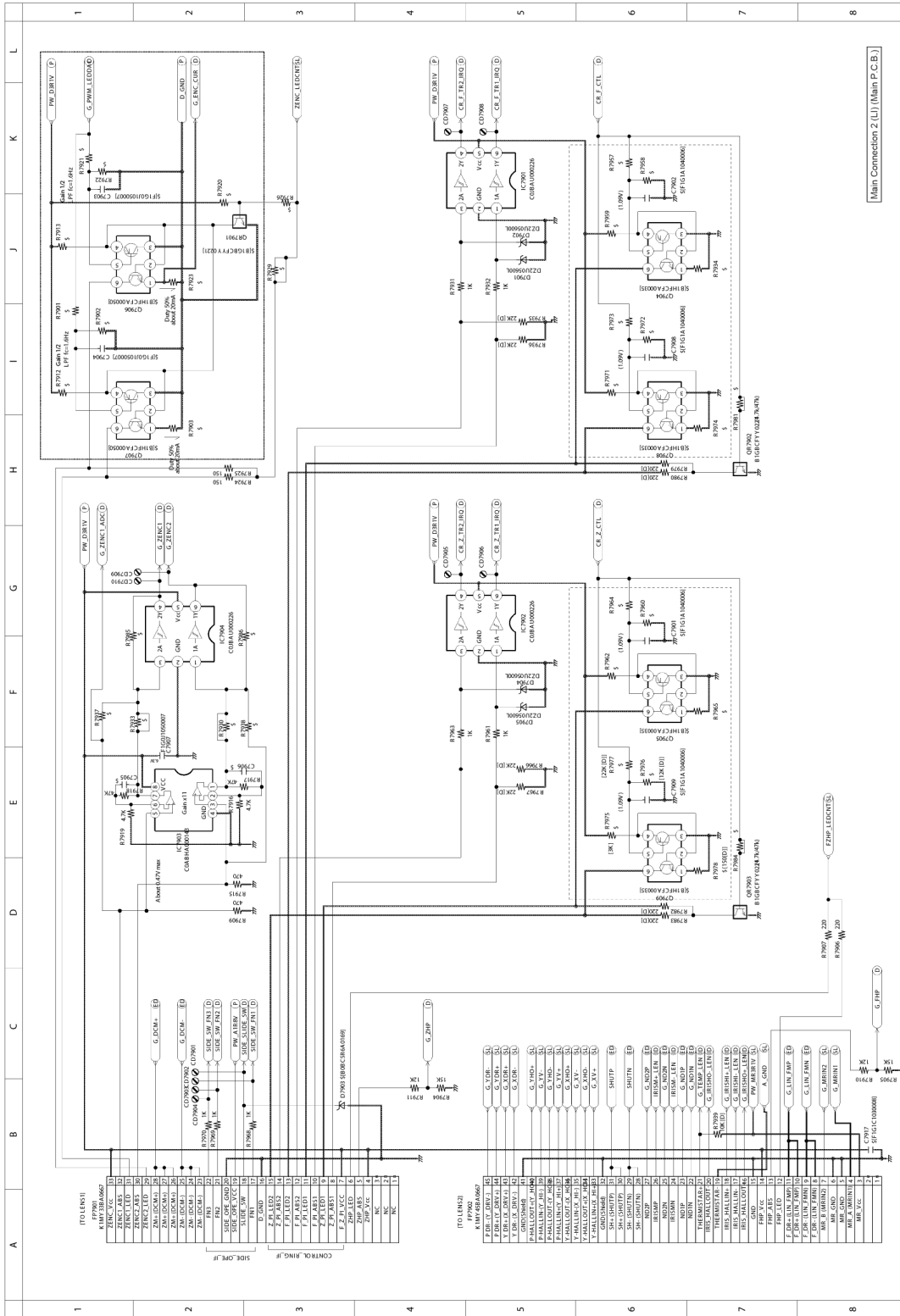
# Model No. : DMC-FZ2000/FZ2500 Iris Driver (ID) (Main P.C.B.)



# Model No. : DMC-FZ2000/FZ2500 System Driver (SY) (Main P.C.B.)

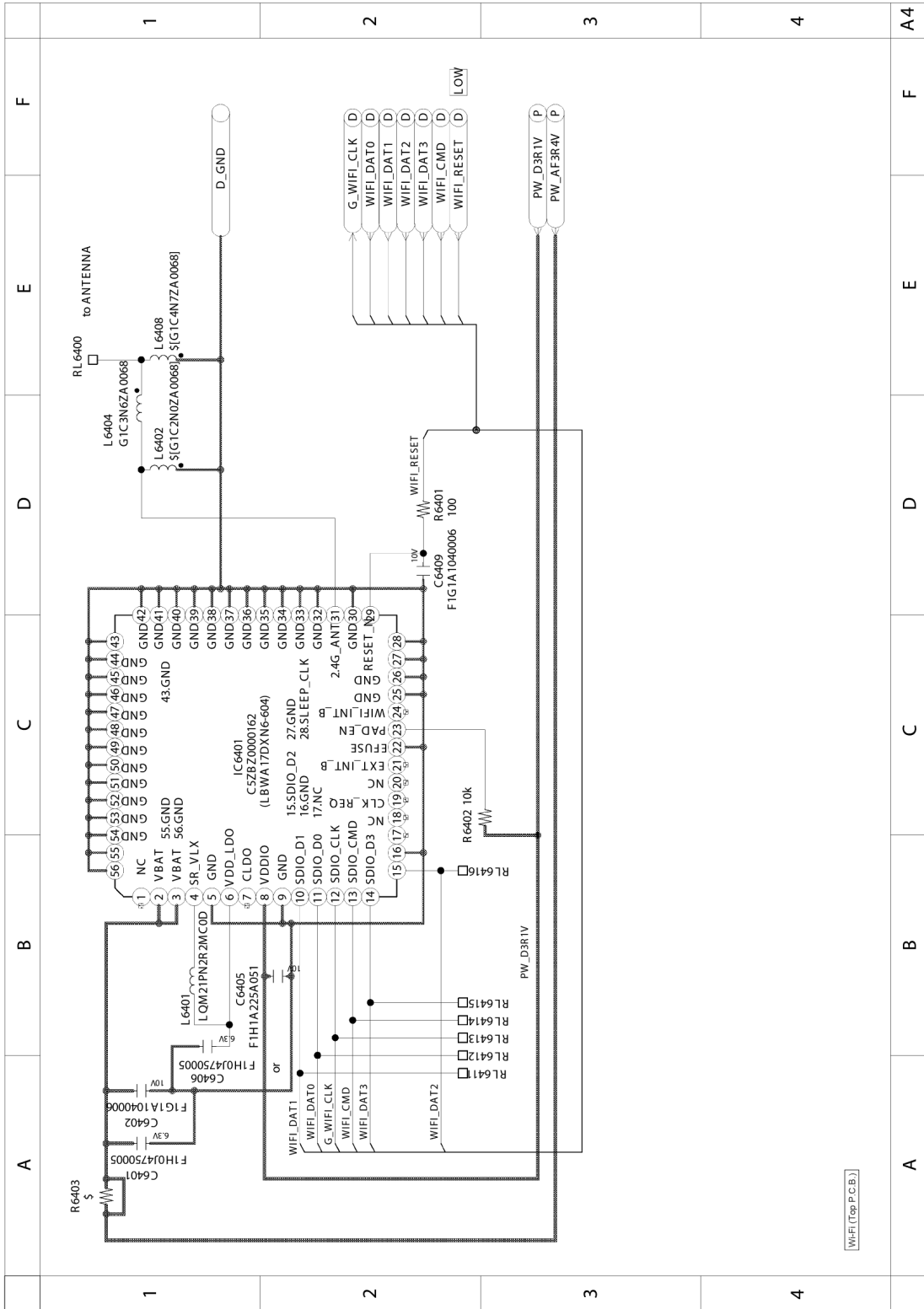


# Model No. : DMC-FZ2000/FZ2500 Main Connection 2 (LI) (Main P.C.B.)



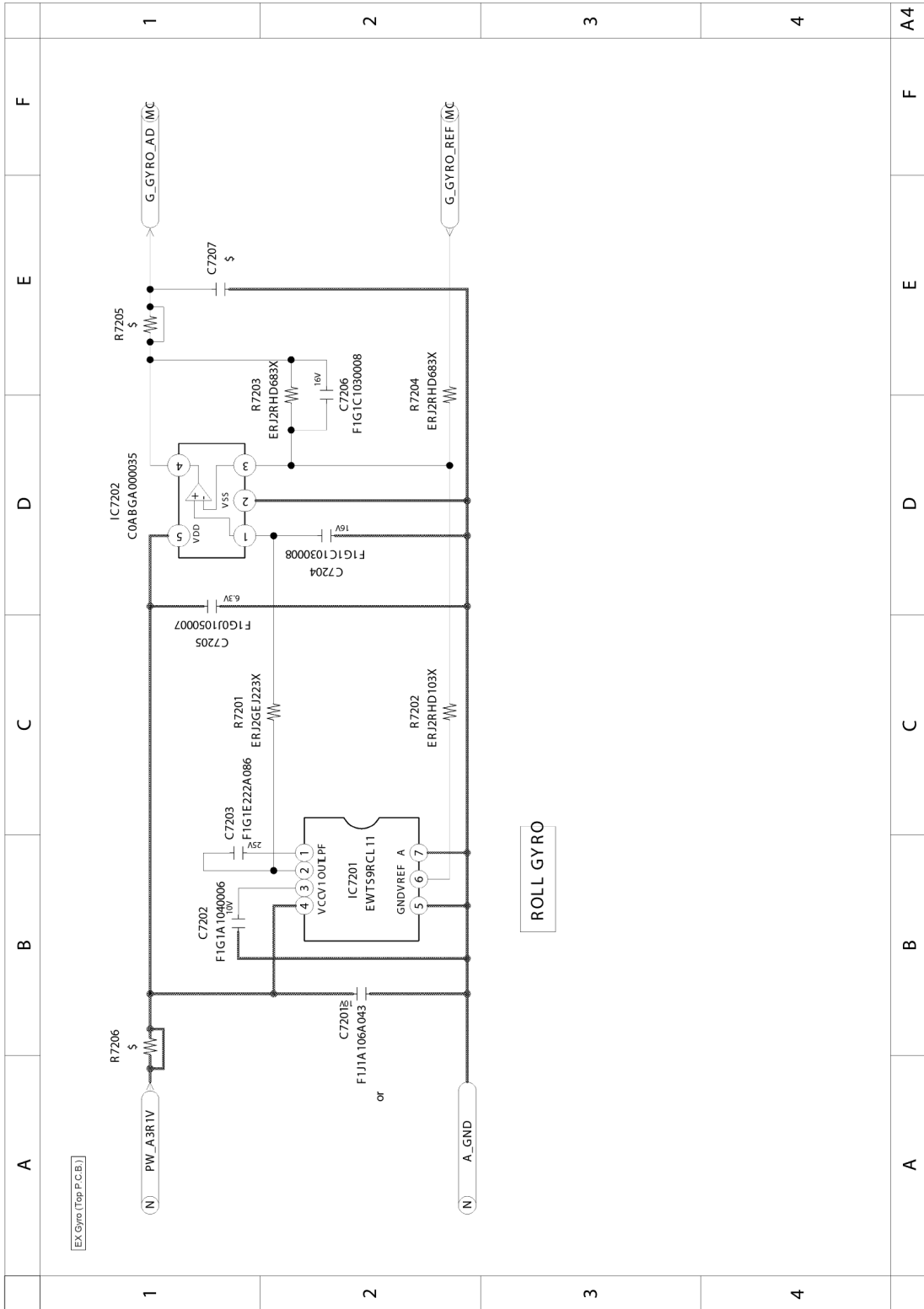


# Model No. : DMC-FZ2000/FZ2500 Wi-Fi (Top P.C.B.)

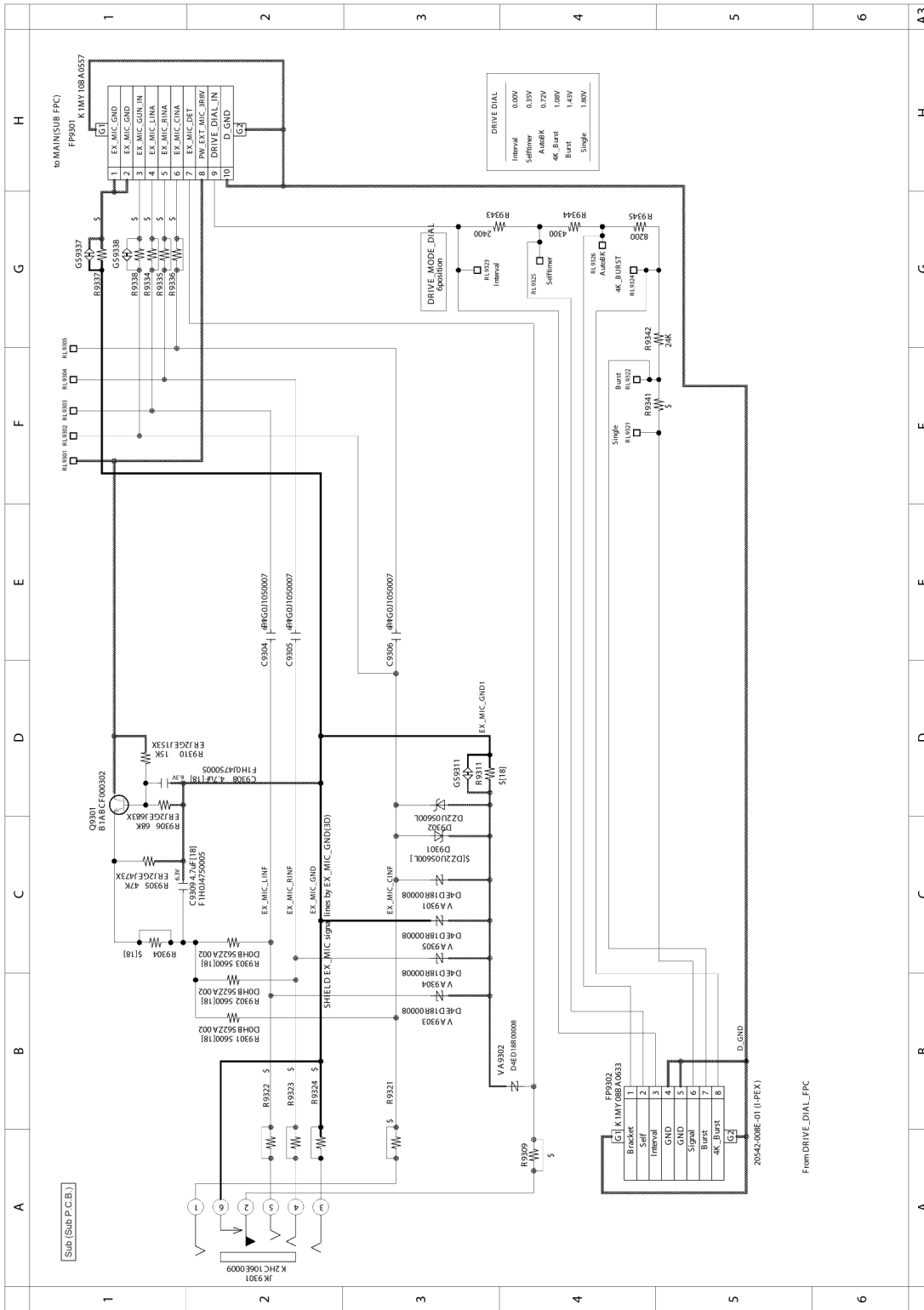


[Wi-Fi (Top P.C.B.)]

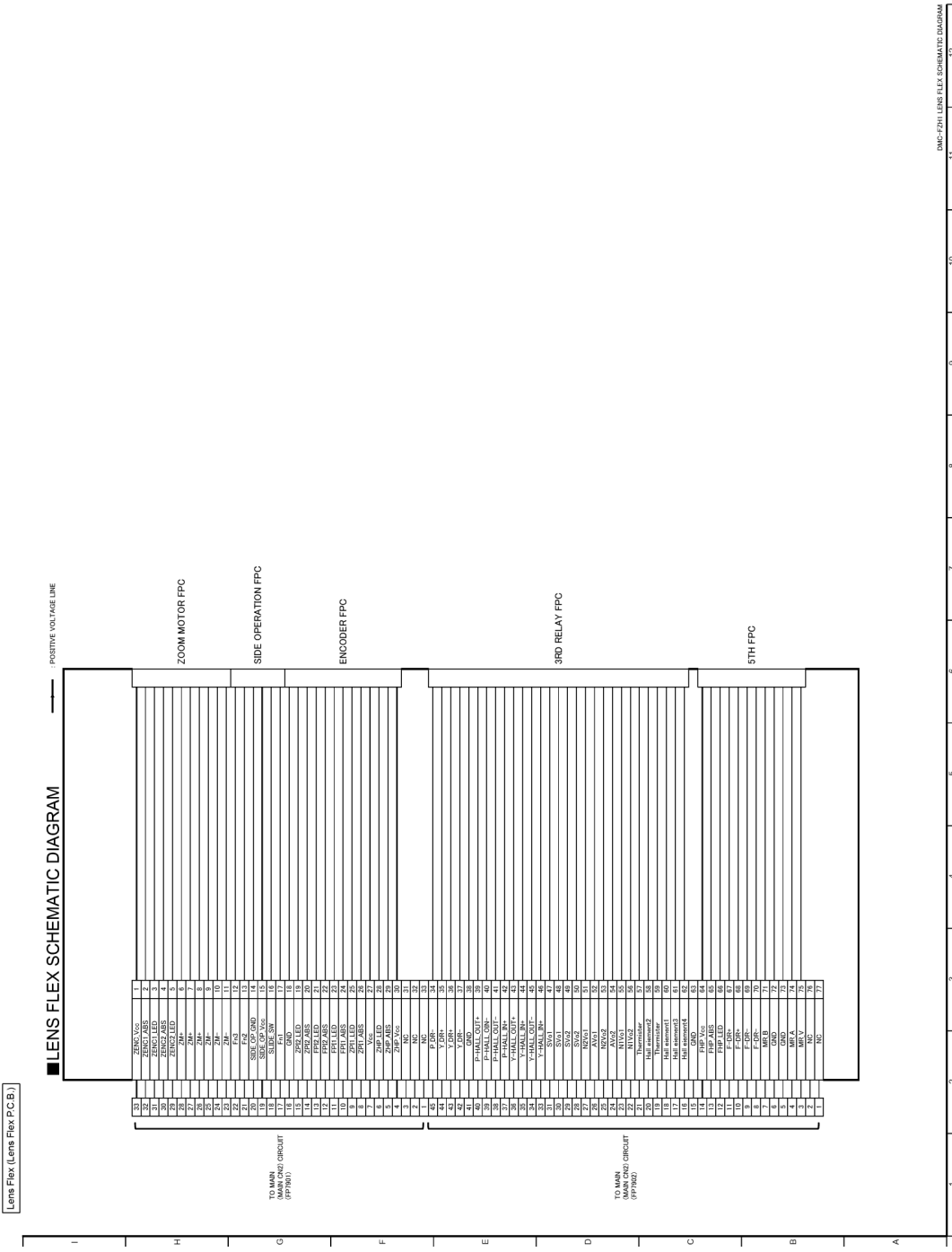
**Model No. : DMC-FZ2000/FZ2500 EX Gyro (Top P.C.B.)**



# Model No. : DMC-FZ2000/FZ2500 Sub (Sub P.C.B.)



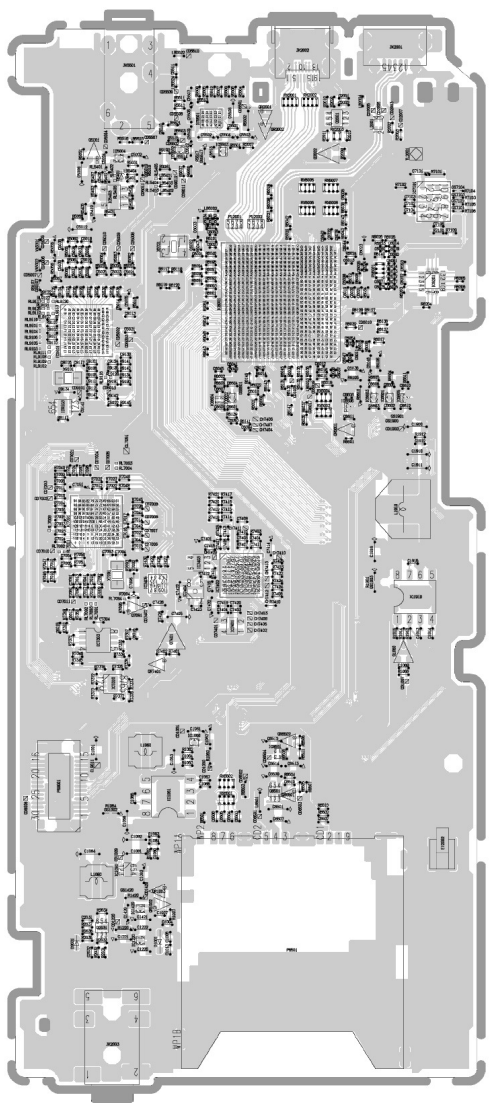
# Model No. : DMC-FZ2000/FZ2500 Lens Flex (Lens Flex P.C.B.)



---

**Model No. : DMC-FZ2000/FZ2500 Main P.C.B. (Component Side)**

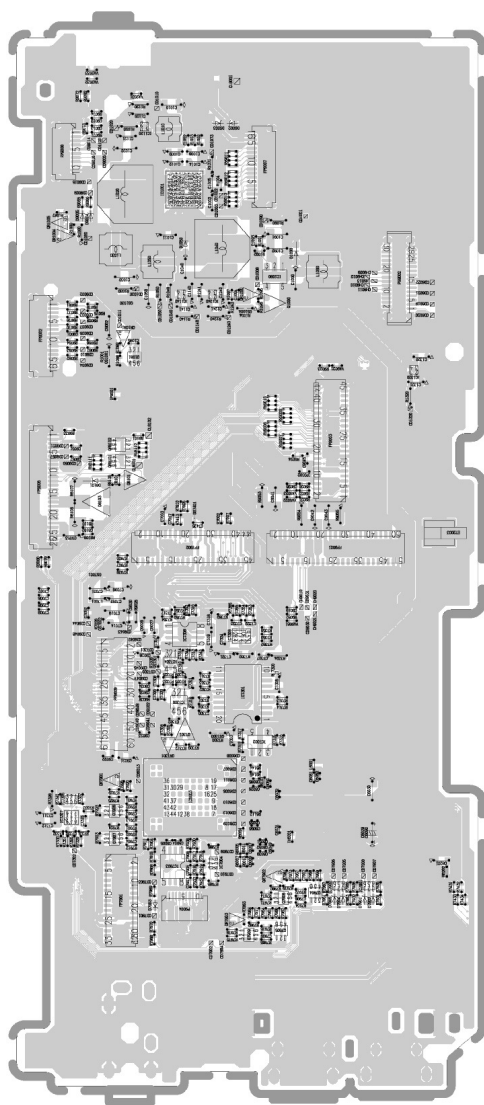
---



---

**Model No. : DMC-FZ2000/FZ2500 Main P.C.B. (Foil Side)**

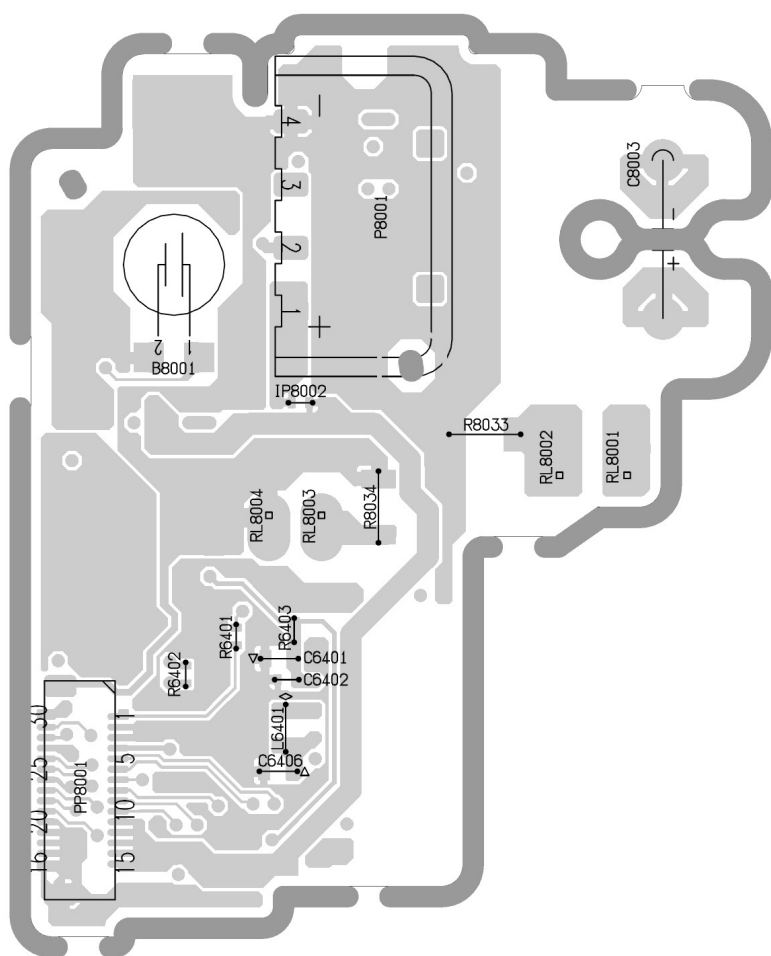
---



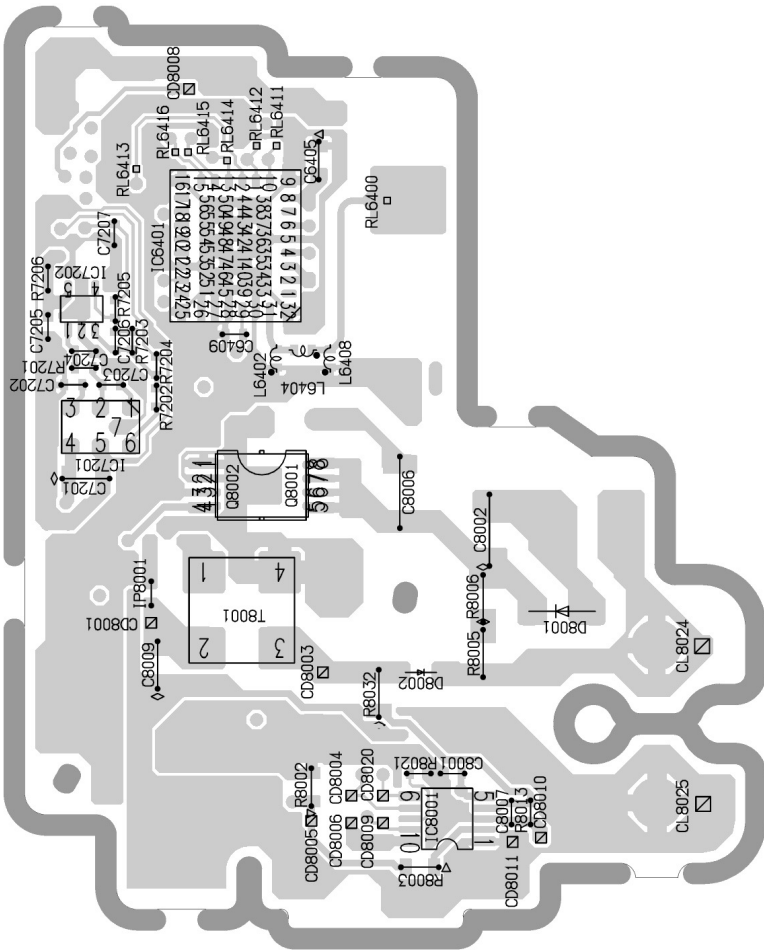
---

**Model No. : DMC-FZ2000/FZ2500 Flash P.C.B. (Component Side)**

---



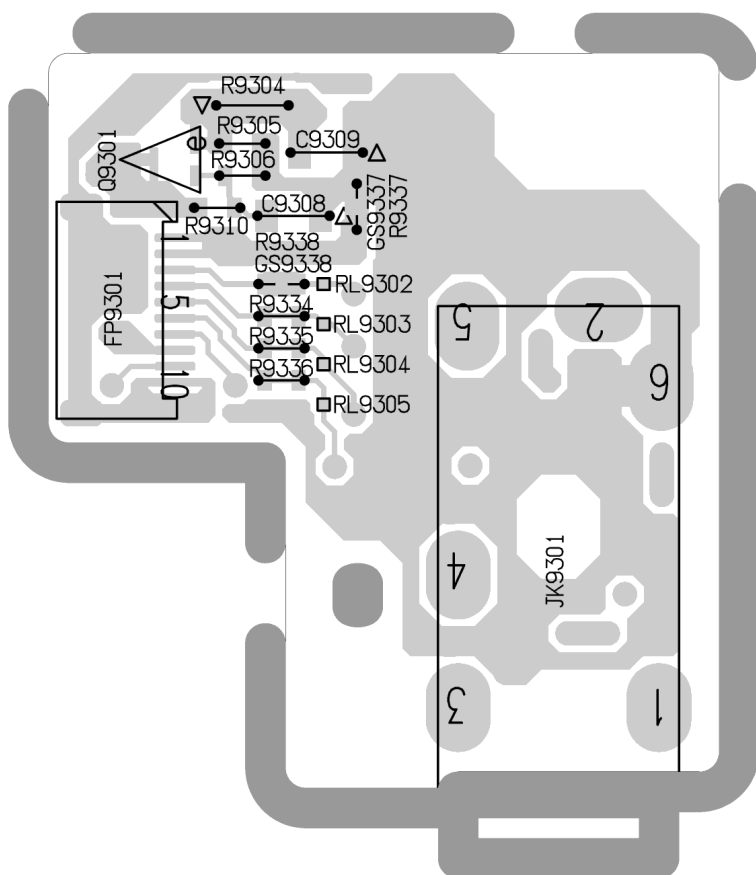
**Model No. : DMC-FZ2000/FZ2500 Flash P.C.B. (Foil Side)**



---

**Model No. : DMC-FZ2000/FZ2500 Sub P.C.B. (Component Side)**

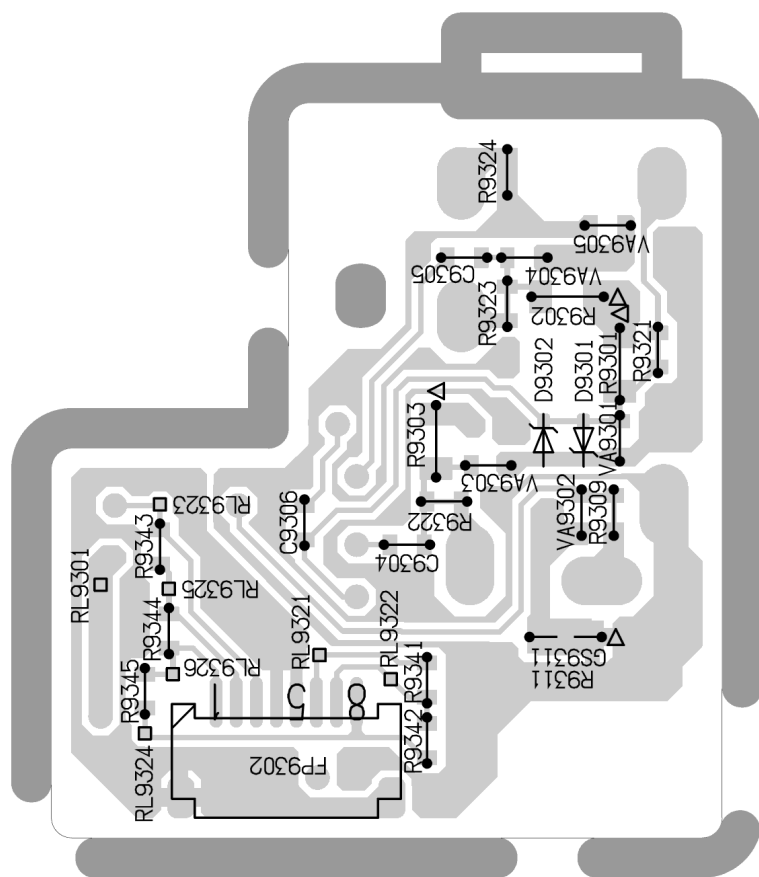
---



---

**Model No. : DMC-FZ2000/FZ2500 Sub P.C.B. (Foil Side)**

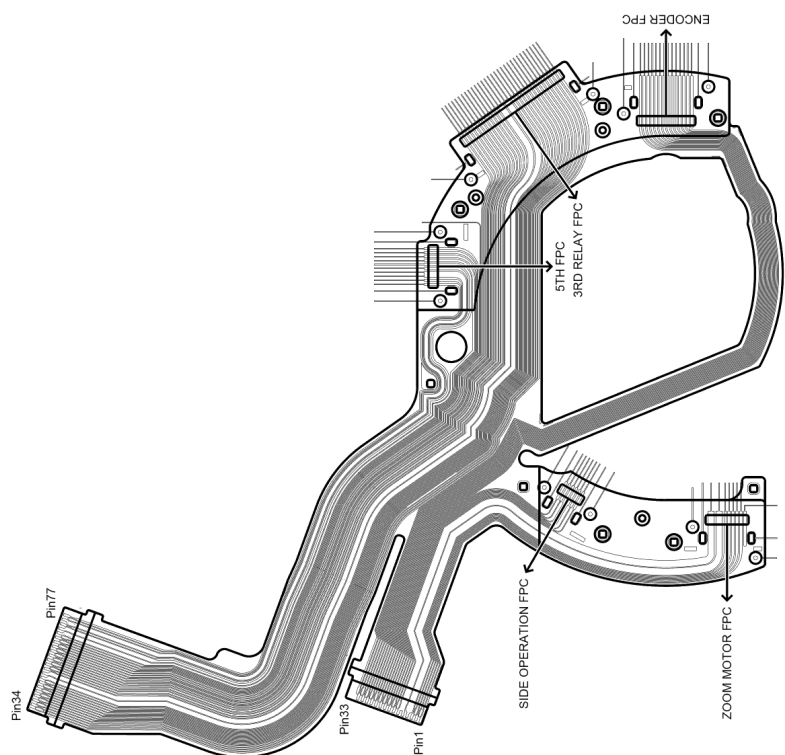
---



---

**Model No. : DMC-FZ2000/FZ2500 Lens Flex P.C.B.**

---



## Model No. : DMC-FZ2000/FZ2500 Parts List

Change	Safety	Ref. No.	Part No.	Part Name & Description	Q'ty	Remarks
		C7201	F1J1A106A043	C.CAPACITOR CH 10V 10U	1	
		C7202	F1G1C104A077	C.CAPACITOR CH 10V 0.1U	1	
		C7203	F1G1E222A086	C.CAPACITOR CH 25V 2200P	1	
		C7204	F1G1C1030008	C.CAPACITOR CH 16V 0.01U	1	
		C7205	F1G0J1050007	C.CAPACITOR CH 6.3V 1U	1	
		C7206	F1G1C1030008	C.CAPACITOR CH 16V 0.01U	1	
		C8001	F1G0J1050007	C.CAPACITOR CH 6.3V 1U	1	
		C8002	F1K2J223A029	C.CAPACITOR 630V 0.022U	1	
		C8006	F1K2J223A029	C.CAPACITOR 630V 0.022U	1	
		C8007	F1G1H270A557	C.CAPACITOR CH 50V 27P	1	
		C8009	F1J1A106A043	C.CAPACITOR CH 10V 10U	1	
		D1001	B0JCGD000016	DIODE	1	E.S.D.
		D1050	B0ACRC000001	DIODE	1	E.S.D.
		D1090	B0ACRC000001	DIODE	1	E.S.D.
		D5401	DZ2U05600L	DIODE	1	E.S.D.
		D7901	DZ2U05600L	DIODE	1	E.S.D.
		D7902	DZ2U05600L	DIODE	1	E.S.D.
		D7904	DZ2U05600L	DIODE	1	E.S.D.
		D7905	DZ2U05600L	DIODE	1	E.S.D.
		D8001	B0ECGP000006	DIODE	1	E.S.D.
		D8002	DA2SF650EL	DIODE	1	E.S.D.
		D8101	DZ2J082M0L	DIODE	1	E.S.D.
		D8103	B2ABAP000007	DIODE	1	E.S.D.
		D9004	DZ2U05600L	DIODE	1	E.S.D.
		D9005	DZ2U05600L	DIODE	1	E.S.D.
		ET2002	K4CC01000001	EARTH SPRING	1	
		ET2003	K4CC01000001	EARTH SPRING	1	
		FL2001	EXC28CH900U	FILTER	1	
		FL2002	EXC28CH900U	FILTER	1	
		FP7901	K1MY33BA0667	CONNECTOR 33P	1	
		FP7902	K1MY45BA0667	CONNECTOR 45P	1	
		FP9001	K1MY51BA0667	CONNECTOR 51P	1	
		FP9002	K1MY16BA0633	CONNECTOR 16P	1	
		FP9003	K1MY45BA0667	CONNECTOR 45P	1	
		FP9006	K1MY26BA0633	CONNECTOR 26P	1	
		FP9007	K1MY16BA0633	CONNECTOR 16P	1	
		FP9008	K1MY10BA0633	CONNECTOR 10P	1	
		FP9009	K1MY61AA0288	CONNECTOR 61P	1	
		IC1001	C1ZBZ0004906	IC	1	E.S.D.
		IC1060	C0DBGYY05343	IC	1	E.S.D.
		IC1061	C0DBAYY01645	IC	1	E.S.D.
		IC1080	C0DBAYY02115	IC	1	E.S.D.
		IC1090	C0DBAYY02118	IC	1	E.S.D.
		IC1120	C0DBGYY03614	IC	1	E.S.D.
		IC1140	C0DBGYY03640	IC	1	E.S.D.
		IC1220	C0DBGYY03614	IC	1	E.S.D.
		IC1240	C0DBGYY05360	IC	1	E.S.D.
		IC1320	C0DBGYY03614	IC	1	E.S.D.
		IC1420	C0DBGYY03614	IC	1	E.S.D.
		IC1910	C0DBAYY01645	IC	1	E.S.D.
		IC5004	C0DBGYY03668	IC	1	E.S.D.
		IC5403	C0BBAA000008	IC	1	E.S.D.
		IC5501	C1AB00004335	IC	1	E.S.D.
		IC5502	C0DBGYY03614	IC	1	E.S.D.
		IC6001	VSG1033	IC	1	E.S.D.
		IC6003	1VK1FZ2000	IC	1	E.S.D.
		IC6201	L2EE00000038	IC	1	E.S.D.
		IC6501	C0DBGYY00779	IC	1	E.S.D.
		IC6601	C0DBGYY05582	IC	1	E.S.D.
		IC6602	C0DBGYY05590	IC	1	E.S.D.
		IC6603	C0DBGYY05584	IC	1	E.S.D.
		IC6604	C0ZBZ0002095	IC	1	E.S.D.

## Model No. : DMC-FZ2000/FZ2500 Parts List

Change	Safety	Ref. No.	Part No.	Part Name & Description	Q'ty	Remarks
		IC6605	C0ZBZ0002264	IC	1	E.S.D.
		IC6606	C0ZBZ0002264	IC	1	E.S.D.
		IC7001	C1AB00003449	IC	1	E.S.D.
		IC7101	EWTS9PDL1A	IC	1	E.S.D. [INBD]
		IC7201	EWTS9RCL1A	IC	1	E.S.D. [INBD]
		IC7202	C0ABGA000035	IC	1	E.S.D.
		IC7300	C0JBZ002390	IC	1	E.S.D.
		IC7301	C0GBY0000241	IC	1	E.S.D.
		IC7302	C0ABAA000055	IC	1	E.S.D.
		IC7304	C0ABGA000090	IC	1	E.S.D.
		IC7305	C0JBAB001160	IC	1	E.S.D.
		IC7307	C0GBY0000153	IC	1	E.S.D.
		IC7308	C0GBC0000028	IC	1	E.S.D.
		IC7310	C0ABHA000070	IC	1	E.S.D.
		IC7401	C0DBGY00909	IC	1	E.S.D.
		IC7402	C1AB00003719	IC	1	E.S.D.
		IC7403	C0JBAB001130	IC	1	E.S.D.
		IC7404	C0GBY0000242	IC	1	E.S.D.
		IC7901	C0JBAU000226	IC	1	E.S.D.
		IC7902	C0JBAU000226	IC	1	E.S.D.
		IC7903	C0ABHA000143	IC	1	E.S.D.
		IC7904	C0JBAU000226	IC	1	E.S.D.
		IC8001	C0ZBZ0001817	IC	1	E.S.D.
		IC9101	C1AB00004163	IC	1	E.S.D.
		IC9103	C0DBGY02368	IC	1	E.S.D.
	⚠	IP8001	ERBRD1R50X	FUSE	1	
	⚠	IP8002	ERBRD2R50X	FUSE	1	
	⚠	IP9001	ERBRD0R75X	FUSE	1	
	⚠	IP9002	ERBRD0R31X	FUSE	1	
		JK2001	K1FY105E0014	JACK	1	
		JK2002	K1FY119E0057	JACK	1	
		JK2003	K2HD104D0002	JACK	1	
		JK5501	K2HC106E0009	JACK	1	
		L1010	G1C4R7MA0392	CHIP INDUCTOR 4.7UH	1	
		L1020	G1C100MA0535	CHIP INDUCTOR	1	
		L1030	G1C100MA0461	CHIP INDUCTOR 10UH	1	
		L1040	G1C100MA0535	CHIP INDUCTOR	1	
		L1050	G1C100MA0461	CHIP INDUCTOR 10UH	1	
		L1060	G1C2R2MA0477	CHIP INDUCTOR 2.2UH	1	
		L1080	G1C100MA0461	CHIP INDUCTOR 10UH	1	
		L1090	G1C4R7MA0477	CHIP INDUCTOR 4.7UH	1	
		L1910	G1C1R5Z00011	CHIP INDUCTOR	1	
		L2001	J0ZZB0000142	CHIP INDUCTOR	1	
		L6001	G1C2R2KA0096	CHIP INDUCTOR 2.2UH	1	
		L7001	G1C100MA0408	CHIP INDUCTOR 10UH	1	
		LB2004	J0JCC0000415	FILTER	1	
		LB5401	J0JBC0000107	FILTER	1	
		LB5402	J0JBC0000107	FILTER	1	
		LB5403	J0JBC0000107	FILTER	1	
		LB5404	J0JBC0000107	FILTER	1	
		LB5521	J0JBC0000107	FILTER	1	
		LB5522	J0JBC0000107	FILTER	1	
		LB5523	J0JBC0000107	FILTER	1	
		LB5524	J0JBC0000107	FILTER	1	
		LB6002	J0JFC0000006	FILTER	1	
		LB6003	J0JCC0000317	FILTER	1	
		P6501	K1NA09E00166	CONNECTOR 9P	1	
		P8001	K4ZZ04000052	CONNECTOR 4P	1	
		P9004	K1MY10BA0557	CONNECTOR 10P	1	
		PP8001	K1KA30B00077	CONNECTOR 30P	1	
		PS9001	K1KB30AA0116	CONNECTOR 30P	1	
		Q1060	B1CFJD000007	TRANSISTOR	1	E.S.D.

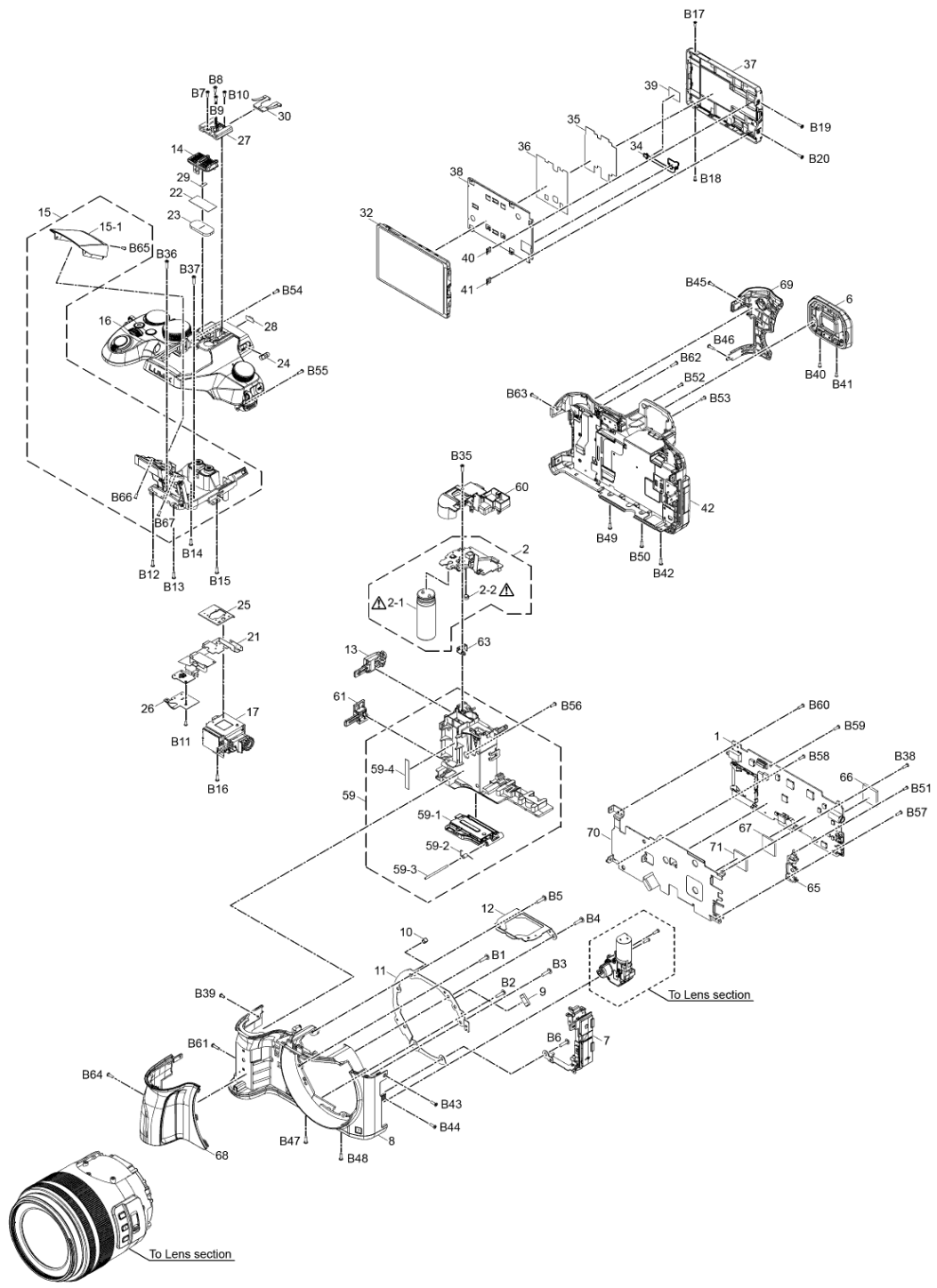
## Model No. : DMC-FZ2000/FZ2500 Parts List

Change	Safety	Ref. No.	Part No.	Part Name & Description	Q'ty	Remarks
		Q1081	MTM861270LBF	TRANSISTOR	1	E.S.D.
		Q1090	B1CHQB000012	TRANSISTOR	1	E.S.D.
		Q2001	B1CFGD000003	TRANSISTOR	1	E.S.D.
		Q2002	B1CFJD000007	TRANSISTOR	1	E.S.D.
		Q2031	B1HFCFA00050	TRANSISTOR	1	E.S.D.
		Q5001	B1ABCF000302	TRANSISTOR	1	E.S.D.
		Q6501	MTM861270LBF	TRANSISTOR	1	E.S.D.
		Q7091	B1ABCF000302	TRANSISTOR	1	E.S.D.
		Q7301	B1ADGE000014	TRANSISTOR	1	E.S.D.
		Q7401	B1CHRD000092	TRANSISTOR	1	E.S.D.
		Q8001	B1JBLP000037	TRANSISTOR	1	E.S.D.
		Q8101	B1CFJD000007	TRANSISTOR	1	E.S.D.
		QR1002	B1GBCFYY0222	TRANSISTOR-RESISTOR	1	E.S.D.
		QR1003	B1GDCFFYY0151	TRANSISTOR-RESISTOR	1	E.S.D.
		QR1004	B1GBCFYY0217	TRANSISTOR-RESISTOR	1	E.S.D.
		QR1005	B1GBCFYY0217	TRANSISTOR-RESISTOR	1	E.S.D.
		QR1081	B1GBCFYY0217	TRANSISTOR-RESISTOR	1	E.S.D.
		QR1090	B1GBCFYY0219	TRANSISTOR-RESISTOR	1	E.S.D.
		QR2001	B1GBCFYY0222	TRANSISTOR-RESISTOR	1	E.S.D.
		QR2002	B1GDCFFYY0151	TRANSISTOR-RESISTOR	1	E.S.D.
		QR6501	B1GBCFYY0217	TRANSISTOR-RESISTOR	1	E.S.D.
		QR6502	B1GDCFFYY0150	TRANSISTOR-RESISTOR	1	E.S.D.
		QR6601	B1GBCFYY0217	TRANSISTOR-RESISTOR	1	E.S.D.
		QR7301	B1GBCFYY0221	TRANSISTOR-RESISTOR	1	E.S.D.
		QR7401	B1GBCFYY0221	TRANSISTOR-RESISTOR	1	E.S.D.
		QR7902	B1GBCFYY0221	TRANSISTOR-RESISTOR	1	E.S.D.
		QR7903	B1GBCFYY0221	TRANSISTOR-RESISTOR	1	E.S.D.
		QR8101	B1GFCFFYY0021	TRANSISTOR-RESISTOR	1	E.S.D.
		QR8102	B1GFCFFYY0021	TRANSISTOR-RESISTOR	1	E.S.D.
		R7201	DOGA223JA023	M.RESISTOR CH 1/10W 22K	1	
		R7202	D1BA1002A022	M.RESISTOR CH 1/16W 10K	1	
		R7203	D1BA6802A022	M.RESISTOR CH 1/16W 68K	1	
		R7204	D1BA6802A022	M.RESISTOR CH 1/16W 68K	1	
		R8002	D0GB104JA065	M.RESISTOR CH 1/10W 100K	1	
		R8003	DOGB680JA065	M.RESISTOR CH 1/10W 68	1	
		R8005	DOGD393JA052	M.RESISTOR CH 1/10W 39K	1	
		R8006	DOGD393JA052	M.RESISTOR CH 1/10W 36K	1	
		R8013	D1BA1621A022	M.RESISTOR CH 1/16W1.621K	1	
		R8021	DOGA473JA023	M.RESISTOR CH 1/10W 47K	1	
		R8032	D1BD4703A119	M.RESISTOR CH 1/3W 470K	1	
		R8033	DOGF104JA048	RESISTOR	1	
		R8034	DOGF472JA048	RESISTOR	1	
		RX2003	EXB24V472JX	RESISTOR NETWORKS	1	
		RX6001	D1H81034A042	RESISTOR NETWORKS	1	
		RX6003	D1H84734A042	RESISTOR NETWORKS	1	
		RX6004	D1H81814A042	RESISTOR NETWORKS	1	
		RX6501	D1H84734A042	RESISTOR NETWORKS	1	
		RX6502	D1H83304A042	RESISTOR NETWORKS	1	
		RX8111	D1H83314A042	RESISTOR NETWORKS	1	
		RX8112	D1H81034A042	RESISTOR NETWORKS	1	
		RX9007	D1H81014A042	RESISTOR NETWORKS	1	
		RX9008	D1H81014A042	RESISTOR NETWORKS	1	
		RX9009	D1H81014A042	RESISTOR NETWORKS	1	
		RX9010	D1H81014A042	RESISTOR NETWORKS	1	
		RX9011	D1H81024A042	RESISTOR NETWORKS	1	
		RX9012	D1H81024A042	RESISTOR NETWORKS	1	
		RX9013	D1H81024A042	RESISTOR NETWORKS	1	
		T8001	G5DYA0000152	TRANSFORMER	1	
		TH6001	D4CC11030013	THERMISTORS	1	
		VA2031	D4ED18R00008	VARISTOR	1	
		VA2032	D4ED18R00008	VARISTOR	1	
		VA2033	D4ED18R00008	VARISTOR	1	

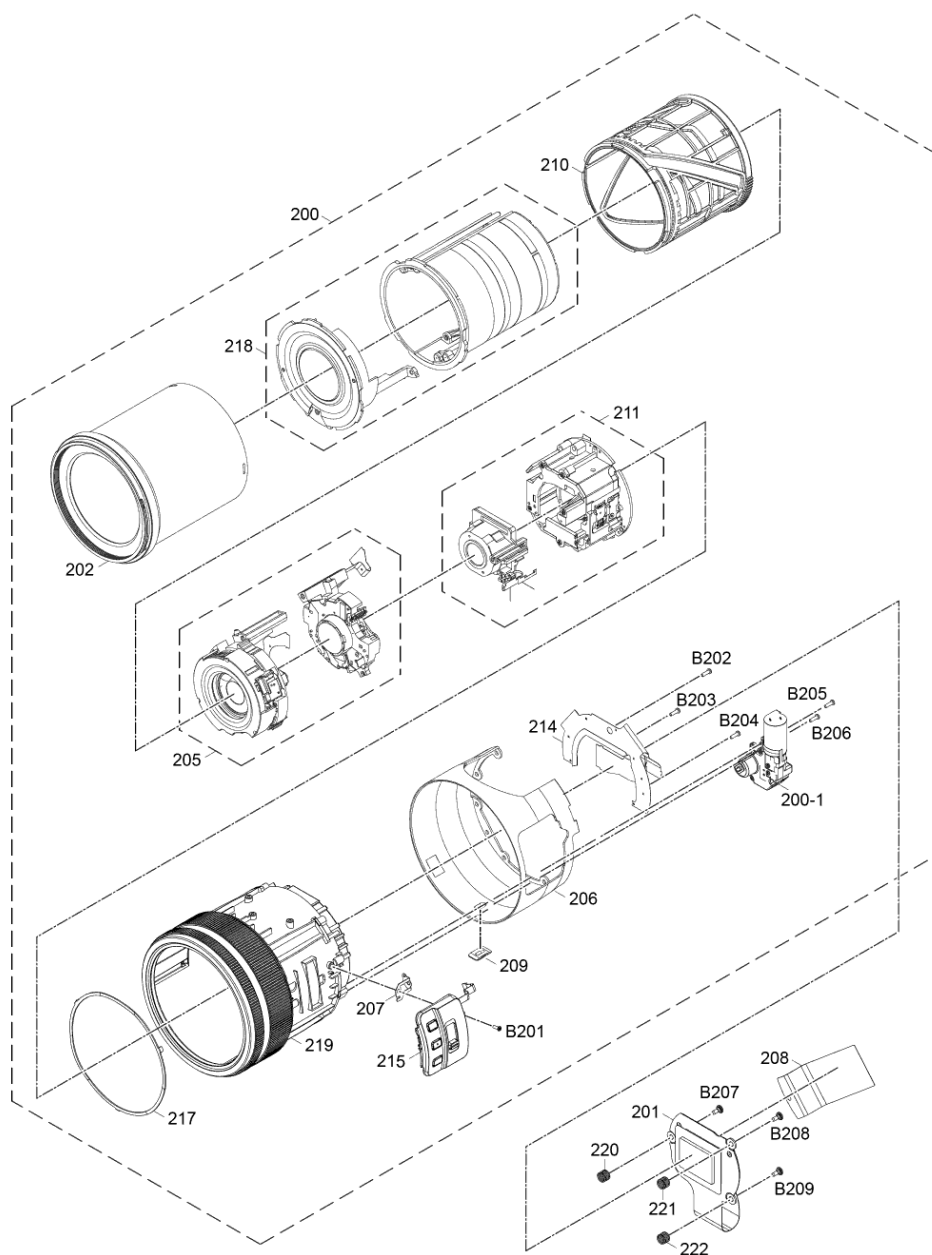
**Model No. : DMC-FZ2000/FZ2500 Parts List**

Change	Safety	Ref. No.	Part No.	Part Name & Description	Q'ty	Remarks
		X6001	H0J240500048	CRYSTAL OSCILLATOR	1	
		X7091	H0J327200230	CRYSTAL OSCILLATOR	1	
		X9101	H0J327200230	CRYSTAL OSCILLATOR	1	

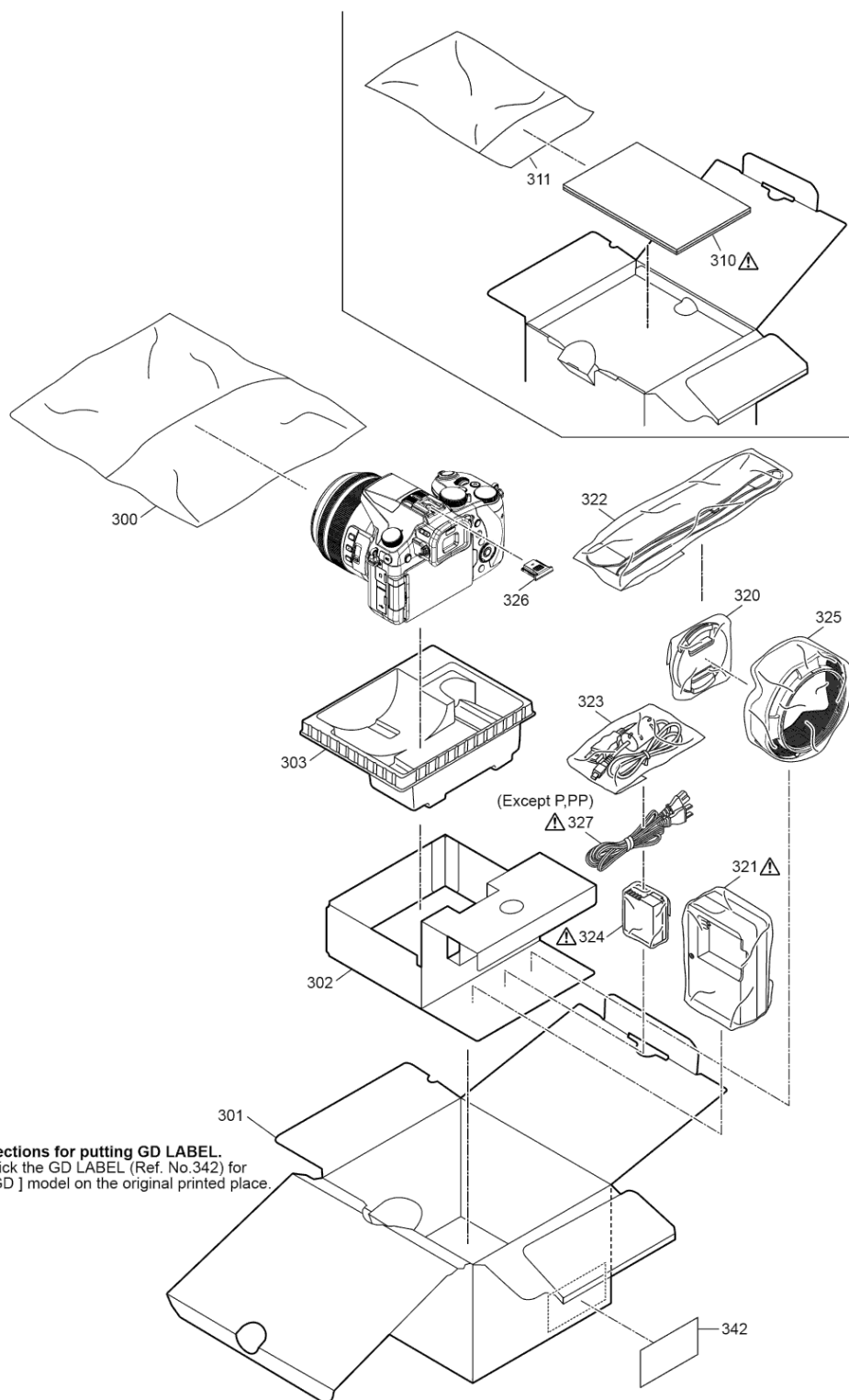
# Model No. : DMC-FZ2000/FZ2500 Frame and Casing Section



**Model No. : DMC-FZ2000/FZ2500 Camera Lens Section**





# Model No. : DMC-FZ2000/FZ2500 Packing Parts and Accessories Section



**Directions for putting GD LABEL.**  
\* Stick the GD LABEL (Ref. No.342) for [ GD ] model on the original printed place.

## Model No. : DMC-FZ2000/FZ2500 Parts List

Change	Safety	Ref. No.	Part No.	Part Name & Description	Q'ty	Remarks
		1	SEP0881AA	MAIN P.C.B.	1	(RTL)E.S.D.
		2	2SE1MCFZH1Z	FLASH P.C.B. UNIT	1	
		2-1	F9Z000000038	E.CAPACITOR	1	(C8003)
		2-2	ML-421S/DB	BUTTON BATTERY	1	(B8001)
		6	1KE1MCFZH1Z	EYE CUP UNIT	1	
		7	1KK1MCFZH1Z	JACK HOLDER UNIT	1	
		8	1KM2MCFZH1Z	FRONT CASE UNIT	1	
		9	DVMC1019Z	GASKET	1	
		10	DVMC1023Z	GASKET	1	
		11	SMP0336	LENS PLATE	1	
		12	SMP0337	LENS TOP PLATE	1	
		13	2KK1MCFZH1Z	REMOTE COVER UNIT	1	
		14	DVGM1001Z	MIC NET	1	
		15	2KE1MCFZH1Z	FLASH UNIT	1	
		15-1	SKK0439K	FLASH CASE TOP	1	
		16	2KM2MCFZH1Z	TOP CASE UNIT	1	
		17	4SE1MCFZH1Z	LVF UNIT	1	
		21	SEP0886AA	MULTI FPC	1	
		22	SGQ0066	MIC NET B	1	
		23	SGQ0072	MIC CUSHION TOP	1	
		24	SGU0021	FLASH LOCK KNOB	1	
		25	SMP0340	HOT SHOE PLATE	1	
		26	SMP0341	FLASH EARTH PLATE	1	
		27	VEK0U23-M	HOT SHOE UNIT	1	
		28	VGQ0P93	TAPE	1	
		29	VGQ8918-B	MICROPHONE TAPE	1	
		30	VMC2111	SHOE SPRING	1	
		32	3GE2MCFZH1Z	LCD TOP CASE UNIT	1	
		34	SEP0433AA	MR SW FPC	1	
		35	SEP0849AA	LCD IF P.C.B.	1	
		36	SGQ0627	LCD BEZEL SHEET	1	
		37	SKK0310K	LCD CASE BOTTOM	1	
		38	SMP0205	LCD BEZEL	1	
		39	VGQ1U00	FPC TAPE	1	
		40	VMP0D70	LCD EARTH PLATE	1	
		41	VMP0D70	LCD EARTH PLATE	1	
		42	1KM1DC2610Z	REAR CASE UNIT	1	
		59	4KM2MCFZH1Z	BATTERY CASE UNIT	1	
		59-1	3KK1MCFZH1Z	BATTERY DOOR UNIT	1	
		59-2	SMB0038	BATTERY DOOR SPRING	1	
		59-3	VMS8026	BATTERY DOOR SHAFT	1	
		59-4	SGQ0285	CAPACITOR TAPE	1	
		60	SGQ0832	CAPACITOR COVER	1	
		61	SKF0155K	COUPLER COVER	1	
		63	SMP0344	BATTERY EARTH	1	
		65	SMQ1098	USB JACK HOLDER	1	
		66	SGQ0212	THERMAL SHEET	1	
		67	SGQ0212	THERMAL SHEET	1	
		68	SGQ0823	FRONT GRIP	1	
		69	SGQ0824	REAR GRIP	1	
		70	SMP0342	BATTERY PLATE	1	
		71	DVMC1028Z	GASKET	1	
		B1	XTV2+8JFN	SCREW	1	
		B2	XTV2+8JFN	SCREW	1	
		B3	XTV2+8JFN	SCREW	1	
		B4	XTV2+8JFN	SCREW	1	
		B5	XTV2+8JFN	SCREW	1	
		B6	XTV2+8JFN	SCREW	1	
		B7	VHD2200	SCREW	1	
		B8	VHD2200	SCREW	1	
		B9	VHD2200	SCREW	1	
		B10	VHD2200	SCREW	1	

## Model No. : DMC-FZ2000/FZ2500 Parts List

Change	Safety	Ref. No.	Part No.	Part Name & Description	Q'ty	Remarks
		B11	VHD2457	SCREW	1	
		B12	XQN16+BJ5FN	SCREW	1	
		B13	XQN16+BJ5FN	SCREW	1	
		B14	XQN16+BJ5FN	SCREW	1	
		B15	XQN16+BJ5FN	SCREW	1	
		B16	XQN16+BJ5FN	SCREW	1	
		B17	VHD2206	SCREW	1	
		B18	VHD2206	SCREW	1	
		B19	VHD2337	SCREW	1	
		B20	VHD2337	SCREW	1	
		B35	XQN16+BJ5FN	SCREW	1	
		B36	VHD2178	SCREW	1	
		B37	VHD2178	SCREW	1	
		B38	VHD2247-A	SCREW	1	
		B39	VHD2301-A	SCREW	1	
		B40	VHD2325	SCREW	1	
		B41	VHD2325	SCREW	1	
		B42	VHD2438	SCREW	1	
		B43	VHD2438	SCREW	1	
		B44	VHD2438	SCREW	1	
		B45	VHD2471	SCREW	1	
		B46	VHD2471	SCREW	1	
		B47	VHD2471	SCREW	1	
		B48	VHD2471	SCREW	1	
		B49	VHD2471	SCREW	1	
		B50	VHD2471	SCREW	1	
		B51	XQN14+BJ4FNK	SCREW	1	
		B52	XQN16+BJ4FN	SCREW	1	
		B53	XQN16+BJ4FN	SCREW	1	
		B54	XQN16+BJ5FN	SCREW	1	
		B55	XQN16+BJ5FN	SCREW	1	
		B56	XQN16+BJ5FN	SCREW	1	
		B57	XQN16+BJ5FN	SCREW	1	
		B58	XQN16+BJ5FN	SCREW	1	
		B59	XQN16+BJ5FN	SCREW	1	
		B60	XQN16+BJ5FN	SCREW	1	
		B61	XQN16+BJ65FC	SCREW	1	
		B62	XQN16+BJ65FC	SCREW	1	
		B63	XQN16+BJ65FC	SCREW	1	
		B64	XQN16+BJ65FC	SCREW	1	
		B65	VHD2476	SCREW	1	
		B66	VHD2476	SCREW	1	
		B67	VHD2476	SCREW	1	
		200	10U1FZH1L4Z	LENS UNIT (W/O MOS)	1	
		200-1	L6DBYYYE0001	ZOOM MOTOR	1	
		201	1SE1FZH1L4Z	MOS UNIT	1	
		202	10U1FZH1L1Z	1ST LENS FRAME UNIT	1	
		205	SXP0155	3G SHUTTER UNIT	1	
		206	SDW0423K	REAR RING	1	
		207	SMA0413	EARTH PLATE	1	
		208	SZT0318	RADIATION SHEET	1	
		209	SDW0421K	LENS RING FOOT	1	
		210	SXQ0757	CAM FRAME UNIT	1	
		211	SXP0156	4TH-5TH LENS FRAME UNIT	1	
		214	1SE1FZH1Z	LENS FPC UNIT	1	
		215	SYU0085	SIDE OPERATION UNIT	1	
		217	SMC0092	WAVE WASHER	1	
		218	10U1FZH1L2Z	2ND-INNER FRAME UNIT	1	
		219	10U1FZH1L3Z	LENS EXTERIOR UNIT	1	
		220	VMB4541	TILT SPRING	1	
		221	VMB4541	TILT SPRING	1	
		222	VMB4541	TILT SPRING	1	

## Model No. : DMC-FZ2000/FZ2500 Parts List

Change	Safety	Ref. No.	Part No.	Part Name & Description	Q'ty	Remarks
		B201	VHD2296	SCREW	1	
		B202	VHD1974	SCREW	1	
		B203	VHD1974	SCREW	1	
		B204	VHD1974	SCREW	1	
		B205	VHD1974	SCREW	1	
		B206	VHD1974	SCREW	1	
		B207	VHD2351	SCREW	1	
		B208	VHD2351	SCREW	1	
		B209	VHD2351	SCREW	1	
		300	SPF0081	CAMERA BAG	1	
		301	SPK0230	PACKING CASE	1	EG, EP, EF, EB
		301	SPK0229	PACKING CASE	1	P, PP, GA, GC, GH, GN, GD
		301	SPK0235	PACKING CASE	1	GK
		302	SPN0557	PAD	1	
		303	SPN0556	CUSHION	1	
	⚠	310	DVQX1031Z	BASIC O/I (GERMAN)	1	EG
	⚠	310	DVQX1032Z	BASIC O/I (FRENCH)	1	EG, EF
	⚠	310	DVQX1033Z	BASIC O/I (ITALIAN)	1	EG
	⚠	310	DVQX1034Z	BASIC O/I (DUTCH)	1	EG, EF
	⚠	310	DVQX1035Z	BASIC O/I (SPANISH)	1	EG
	⚠	310	DVQX1036Z	BASIC O/I (PORTUGUESE)	1	EG
	⚠	310	DVQX1037Z	BASIC O/I (FINNISH)	1	EP
	⚠	310	DVQX1038Z	BASIC O/I (DANISH)	1	EP
	⚠	310	DVQX1039Z	BASIC O/I (SWEDISH)	1	EP
	⚠	310	DVQX1040Z	BASIC O/I (POLISH)	1	EP
	⚠	310	DVQX1041Z	BASIC O/I (CZECH)	1	EP
	⚠	310	DVQX1042Z	BASIC O/I (HUNGARIAN)	1	EP
	⚠	310	DVQX1043Z	BASIC O/I (ENGLISH)	1	EB
	⚠	310	DVQX1028Z	BASIC O/I (ENGLISH)	1	P, PP
	⚠	310	DVQX1029Z	BASIC O/I (SPANISH)	1	P, PP
	⚠	310	DVQX1030Z	BASIC O/I (FRENCH)	1	PP
	⚠	310	DVQX1044Z	BASIC O/I (ENGLISH)	1	GA, GH
	⚠	310	DVQX1045Z	BASIC O/I (CHINESE (TRADITIONAL))	1	GA, GH
	⚠	310	DVQX1047Z	BASIC O/I (ARABIC)	1	GA, GC
	⚠	310	DVQX1046Z	BASIC O/I (ENGLISH)	1	GC
	⚠	310	DVQX1048Z	BASIC O/I (CHINESE (SIMPLIFIED))	1	GK
	⚠	310	DVQX1049Z	BASIC O/I (ENGLISH)	1	GN
	⚠	310	DVQX1050Z	BASIC O/I (KOREAN)	1	GD
		311	VPF1542	BAG, POLYETHYLENE	1	
		320	SYQ0862	LENS CAP	1	
	⚠	321	DE-A80AD/SX	BATTERY CHARGER	1	EG, EP, EF, EB, GN
	⚠	321	DE-A79BB/SX	BATTERY CHARGER	1	P, PP
	⚠	321	DE-A80BE/SX	BATTERY CHARGER	1	GA, GC, GH, GK, GD
		322	DVPW1002Z	SHOULDER STRAP	1	
		323	K1HY04YY0106	USB CABLE W/PLUG	1	
	⚠	324	-----	BATTERY PACK	1	
		325	SYQ0847	LENS HOOD	1	
		326	VYF3522	HOT SHOE COVER	1	
	⚠	327	K2CQ2YY00082	AC CORD W/PLUG	1	EG, EP, EF, GA
	⚠	327	K2CT3YY00034	AC CORD W/PLUG	1	EB, GC, GH
	⚠	327	K2CP2YY00083	AC CORD W/PLUG	1	GA
	⚠	327	K2CA2YY00130	AC CORD W/PLUG	1	GK
	⚠	327	K2CJ2YY00052	AC CORD W/PLUG	1	GN
	⚠	327	K2CR2YY00026	AC CORD W/PLUG	1	GD
		342	VQL2J61	GD LABEL	1	GD