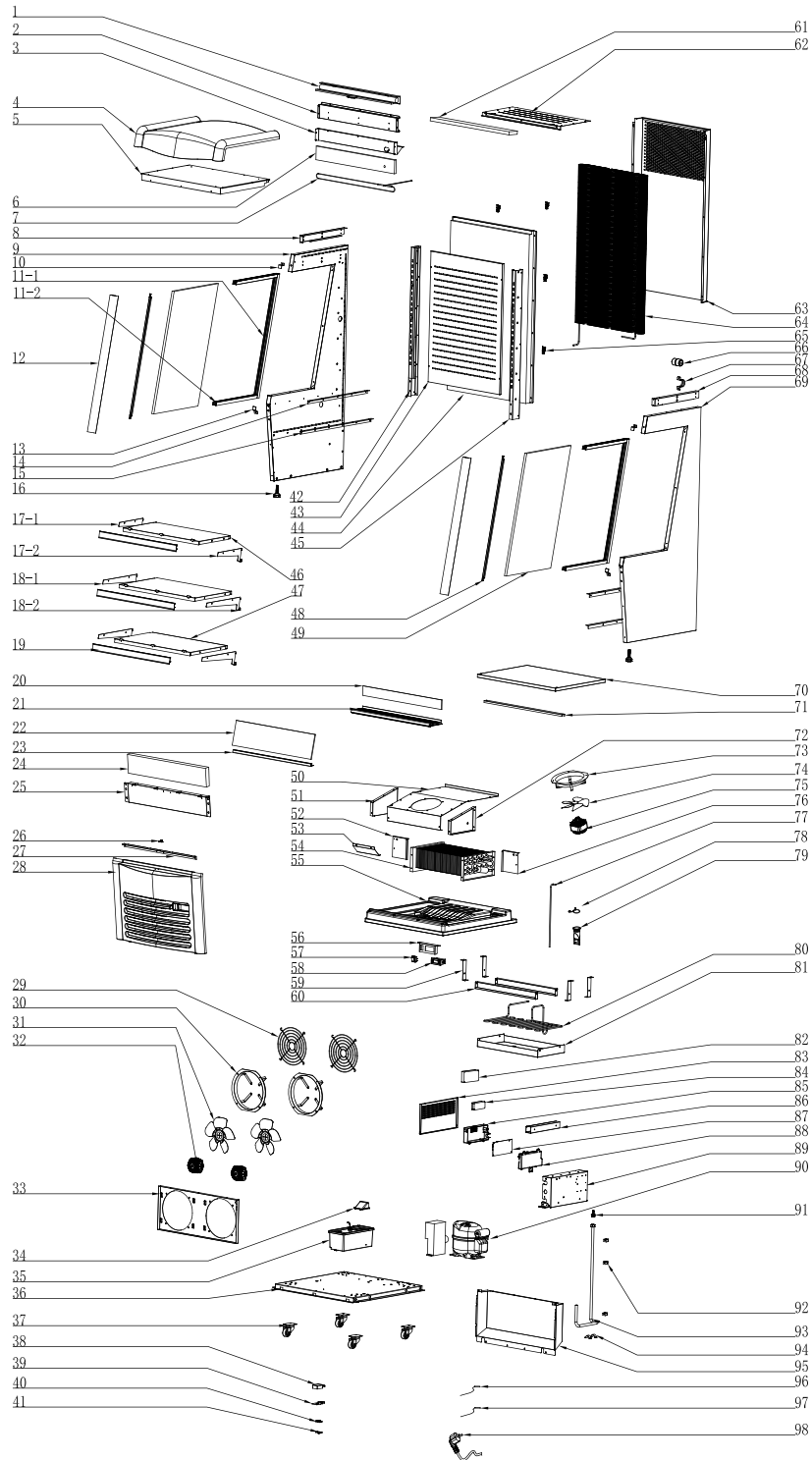


Parts Breakdown

Model RS-CN-0260 47515



Parts Breakdown

Model RS-CN-0260 47515

Item No.	Description	Position	Item No.	Description	Position	Item No.	Description	Position
AL334	Night Curtain for 47515	1	AG596	Evaporator Fan Motor 110V for 47515	32	61224	Dry Filter for 47515	66
AL335	Board Ahead Curtain for 47515	2	AL354	Holder for Condenser Motor for 47515	33	68302	Pressing Plate of Dry Filter for 47515	67
AL336	Air Pressure Plate for 47515	3	AL355	Water Evaporation Port for 47515	34	AL371	Right Support of Indoor Roof for 47515	68
AL337	Top Cover Decorating for 47515	4	60587	Water Receiver for 47515	35	AL322	Foam of Right Board for 47515	69
AL338	Foam of Top Cover for 47515	5	AL356	Base Plate for 47515	36	AL372	Bottom Board of Cabinet for 47515	70
AL318	PE Cotton for 47515	6	AL357	Castor for 47515	37	AL373	Air Inlet Stand for 47515	71
AL339	Hotline for 47515	7	79359	Cover of Junction Box for 47515	38	68334	Right Fixed Plate of Evaporator Motor for 47515	72
AL340	Left Support of Indoor Roof for 47515	8	61244	Junction Box for 47515	39	60641	Fan Guard for 47515	73
AL311	Foam of Left Side Board for 47515	9	61245	Wire Clip Cover for 47515	40	60640	Fan Blade for 47515	74
AL312	Upper Depressor of Pillar for 47515	10	61246	Wire Clip Holder for 47515	41	AL374	Evaporator Fan Motor for 47515	75
AL313	Back Strip for Side Glass for 47515	11-1	68411	Left Support Pillar of Shelf for 47515	42	68446	Right Wind Screen of Evaporator for 47515	76
AL314	Top/Bottom Strip for Side Glass for 47515	11-2	AL358	Ventilated Board for 47515	43	AL375	Connecting Pipe for 47515	77
AL315	Front Pillar of Side Glass for 47515	12	AL359	Foam of Back Cover for 47515	44	AL376	Pipe Clip for 47515	78
AL310	Bottom Depressor of Pillar for 47515	13	68431	Right Support Pillar of Shelf for 47515	45	AL309	Drain Pipe for 47515	79
68408	Support for Upper Cover of Base for 47515	14	AL360	Upper Shelf for 47515	46	AL377	High Pressure Evaporated Copper Tube for 47515	80
68407	Connector of Evaporator Base Panel for 47515	15	AL361	Bottom Shelf for 47515	47	AL378	Tray of Heater for 47515	81
60672	Feet for 47515	16	AL362	LED Light for 47515	48	AK999	LED Power for 47515	82
AL341	Left Support Pillar of Shelf for 47515	17-1	68414	Side Glass for 47515	49	67642	Cover of Terminal Box for 47515	83
AL342	Right Support Pillar of Shelf for 47515	17-2	AL363	Evaporator Cover for 47515	50	AD552	LED Transformer for 47515	84
AL343	Left Support Pillar of Shelf for 47515	18-1	68309	Right Fixed Plate of Evaporator Motor for 47515	51	60594	Cover of Circuit Board Box for 47515	85
AL344	Right Support Pillar of Shelf for 47515	18-2	68445	Left Wind Screen of Evaporator for 47515	52	60590	PVC Trucking for 47515	86
AL345	Price Tag Holder for 47515	19	AL364	Condenser Motor Support Baffle for 47515	53	AF546	Main Circuit Board for 47515	87
AL346	Air Inlet Baffle Glass for 47515	20	AL365	Evaporator for 47515	54	61167	Circuit Board Box for 47515	88
AL347	Air Inlet Cover for 47515	21	AL366	Base Foam of Evaporator for 47515	55	67643	Terminal Box for 47515	89
AL348	Glass Deflector for 47515	22	AL327	Holder for Digital Display for 47515	56	AL305	Compressor for 47515	90
AL349	Wind Screen Strip for 47515	23	71514	Switch for 47515	57	68398	Copper Connection for 47515	91
AL350	Evaporator Front Plate PE Cotton for 47515	24	67648	Temperature Display for 47515	58	60670	PPR Pipe Clamp for 47515	92
AL351	Front Board for Evaporator for 47515	25	61239	Bracket of Water Receiver for 47515	59	60668	Drain Pipe for 47515	93
60651	Curtain Hook for 47515	26	AL367	Platen of Heater for 47515	60	60669	Pipe Clamp for 47515	94
AL352	Retaining Plate for Front Base Panel for 47515	27	AL368	Honeycomb Panel for 47515	61	AL379	Base Rear Cover for 47515	95
AL353	Front Base Panel for 47515	28	AL369	Ceiling Board of Cabinet for 47515	62	60666	Temperature Probe for 47515	96
AD519	Flat Net Cover for 47515	29	68423	Condenser Cover for 47515	63	68333	Over-Heating Sensor for 47515	97
60932	Flange for 47515	30	AL370	Condenser for 47515	64	79290	Power Cord for 47515	98
60933	Fan Blade of Condenser for 47515	31	61222	Stands for Condenser for 47515	65			