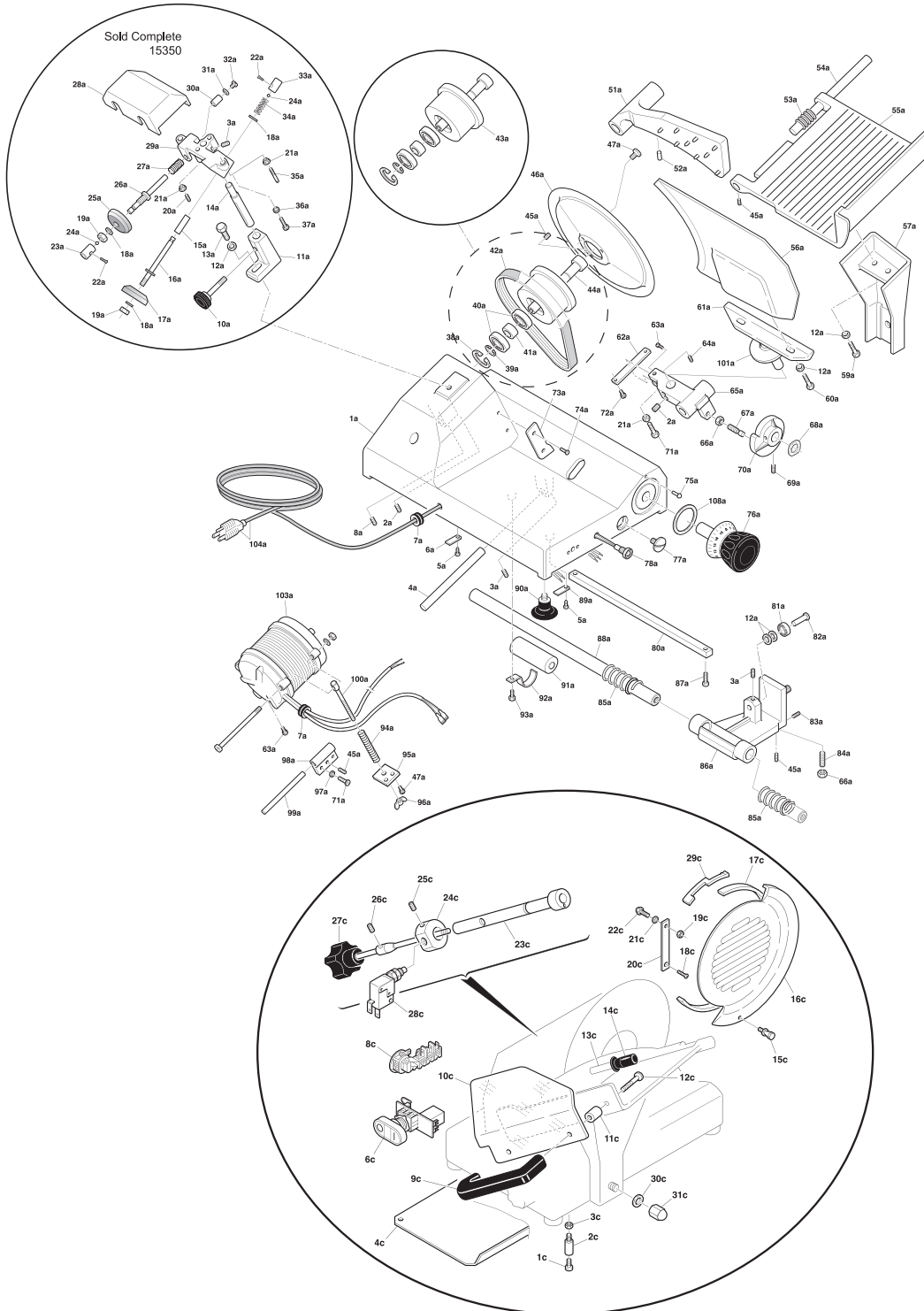


Parts Breakdown

Model MS-IT-0300-C 31344



Parts Breakdown

Model MS-IT-0300-C 31344

Item No.	Description	Position	Item No.	Description	Position	Item No.	Description	Position
34359	Housing for 31344	A1	34401	Set Screw for 31344	A45	34427	Screw TC for 31344	A93
34360	Set Screw TC for 31344	A2	13594	Blade 40-3-250 (19) for 31344	A46	34428	Motor Spring for 31344	A94
34361	Set Screw TC for 31344	A3	15181	Screw TPSV for 31344	A47	34429	Motor Bracket for 31344	A95
34362	Guide Plate Pin for 31344	A4	15185	Meat Grip for 31344	A51	34430	Wing Nut for 31344	A96
34364	Tapping Screw for 31344	A5	34403	Plastic Dowel for 31344	A52	34432	Hinge for 31344	A98
34365	Stop Plate for 31344	A6	18937	Meat Tray Shaft Spring for 31344	A53	34433	Motor Support Shaft for 31344	A99
34366	Strain Relief for 31344	A7	18936	Meat Carriage Shaft for 31344	A54	34434	Motor Tie Rod for 31344	A100
34367	Set Screw TP for 31344	A8	15186	Meat Tray for 31344	A55	15199	Guide Plate Support Cover for 31344	A101
34368	Sharpener Tie Rod for 31344	A10	17690	Guide Plate for 31344	A56	15078	Motor for 31344	A103
34369	Sharpener Support Bracket for 31344	A11	34405	Meat Tray Support for 31344	A57	14859	Power Cord for 31344	A104
34370	Washer for 31344	A12	34406	Screw TE for 31344	A59	36530	Index Knob Spacer for 31344	A108
34371	Screw TE for 31344	A13	34407	Screw TE for 31344	A60	64773	Screw for 31344	C1
34372	Shaft for Sharpener for 31344	A14	15188	Guide Plate Support for 31344	A61	64774	Spacer for 31344	C2
18934	Sharpener Pin Spacer for 31344	A15	34408	Cam Plate for 31344	A62	64775	Nut for 31344	C3
34373	Sharpener Pin for 31344	A16	34409	Screw TC for 31344	A63	25161	Bottom Cover for 31344	C4
18016	G Stone 50x08x06 for 31344	A17	34410	Set Screw TC for 31344	A64	39676	Switch - CE On / Off for 31344	C6
34375	Washer for 31344	A18	15189	Cam Guide for 31344	A65	64776	Terminal Block for 31344	C8
34376	Nut for 31344	A19	15190	Nut for 31344	A66	27964	Wrist Guard Handle for 31344	C9
34377	Set Screw for 31344	A20	34412	Cam Screw for 31344	A67	42756	Wrist Guard Plate for 31344	C10
34378	Nut for 31344	A21	34413	Washer for 31344	A68	64777	Spacer for 31344	C11
34379	Screw TGS for 31344	A22	34414	Set Screw for 31344	A69	64778	Screw for 31344	C12
34380	Sharpener Push Button for 31344	A23	15191	Cam for 31344	A70	44843	Meat Grip Rod for 31344	C13
34381	Ball Bearing for 31344	A24	34415	Screw TE for 31344	A71	64780	Meat Grip Handle for 31344	C14
33032	45x9x6 Sharpener Stone for 31344	A25	34416	Screw TC for 31344	A72	31383	Blade Cover Screw for 31344	C15
34383	Sharpener Pin for 31344	A26	15192	Meat Deflector for 31344	A73	64781	Blade Guard for 31344	C16
34384	Sharpener Pin Spring for 31344	A27	15193	Deflector Screw for 31344	A74	64782	Ring for 31344	C17
34385	Sharpener Cover for 31344	A28	34417	Copper Rivet for 31344	A75	64783	Screw for 31344	C18
34386	Sharpener Body for 31344	A29	15194	Index Knob for 31344	A76	64784	Nut for 31344	C19
34387	Sharpener Pin Spacer for 31344	A30	34418	Screw Chrome for 31344	A77	64785	Support Ring for 31344	C20
34388	Washer for 31344	A31	34419	Light for 31344	A78	64786	Washer for 31344	C21
34389	Screw TC for 31344	A32	19240	Carriage Rail for 31344	A80	64787	Screw for 31344	C22
34390	Sharpener Push Button for 31344	A33	30442	Bearing for 31344	A81	34437	Bearing Shaft for 31344	C23
34391	Sharpener Pin Spring for 31344	A34	34420	Bearing Pin for 31344	A82	25164	Tie Rod Ring for 31344	C24
34392	Stud Screw for 31344	A35	34421	Set Screw for 31344	A83	34438	Set Screw for 31344	C25
34393	Washer for 31344	A36	15196	Set Screw PVC for 31344	A84	34439	Set Screw for 31344	C26
34394	Screw TC for 31344	A37	19246	Slide Bar Spring for 31344	A85	34440	Tie Rod with Spring for 31344	C27
34395	Clip for 31344	A38	15197	Carriage Support for 31344	A86	34441	Micro Switch for 31344	C28
34397	Clip for 31344	A39	34422	Screw TC for 31344	A87	64788	Safety Ring Extension for 31344	C29
15178	Bearing for 31344	A40	34423	Carriage Slide Bar for 31344	A88	64789	Washer for 31344	C30
34399	Spacer for 31344	A41	34424	Stop Plate for 31344	A89	64790	Nut for 31344	C31
15179	Belt TB2-360 x 12 for 31344	A42	15073	Foot for 31344	A90	15350	Complete Sharpener Assembly for 31344	
15180	Spindle Pulley for 31344	A43	15198	Capacitor for 31344	A91			
34400	Bearing Shaft for 31344	A44	34426	Capacitor Bracket for 31344	A92			