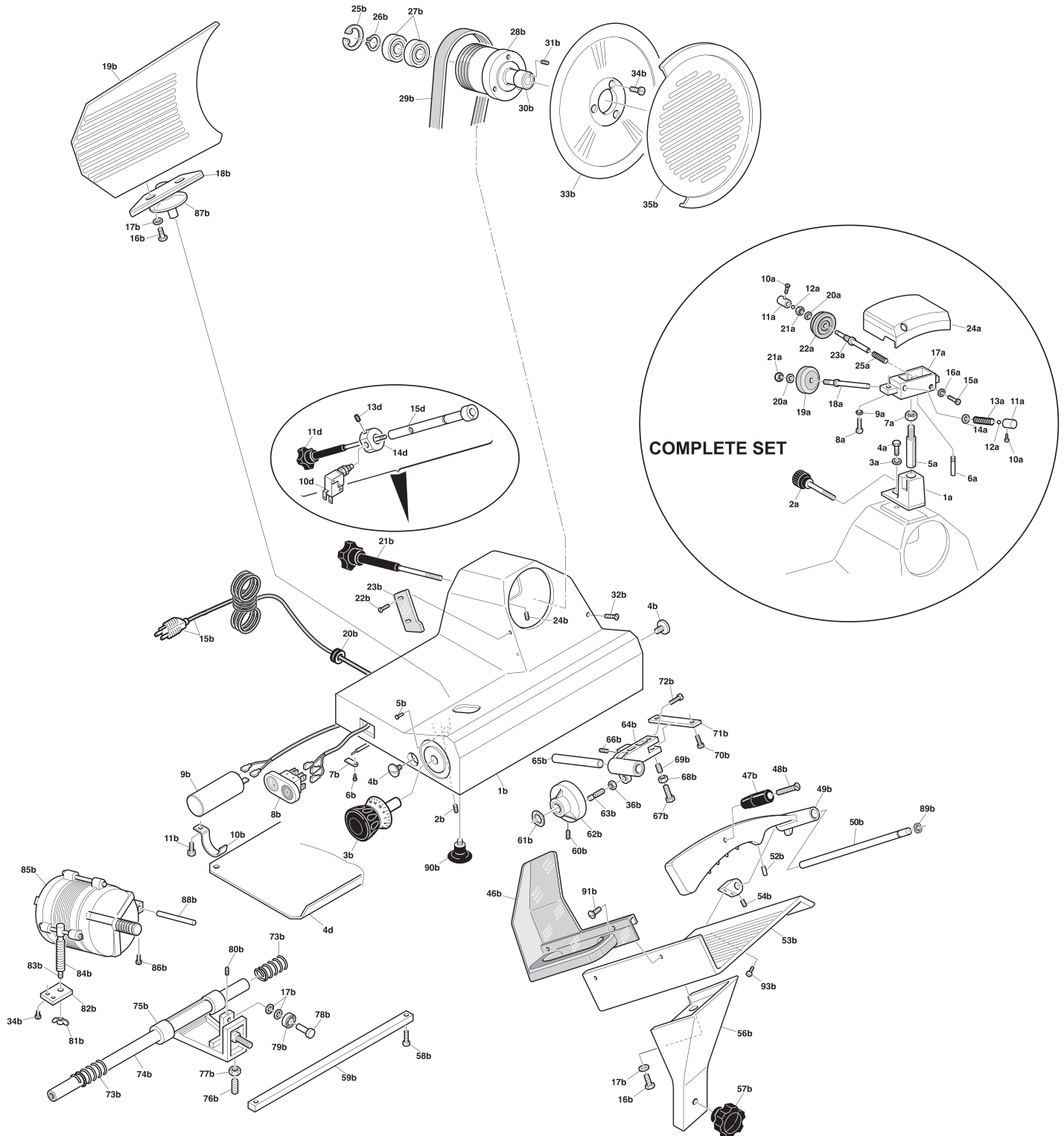


# Parts Breakdown

Model MS-IT-0220-U 13616



# Parts Breakdown

## Model MS-IT-0220-U 13616

Item No.	Description	Position	Item No.	Description	Position	Item No.	Description	Position
33922	Sharpener Base for 13616	A1	14951	Washer for 13616	B17	AJ177	Small Group Pin for 13616	B65
33923	Thumb Screw for Sharpener for 13616	A2	14953	Support for 13616	B18	14993	Screw TC for 13616	B66
33924	Washer for 13616	A3	AJ166	Sail for 13616	B19	14994	Screw TC for 13616	B67
33925	Screw for 13616	A4	14955	Strain Relief for 13616	B20	14995	Nut for 13616	B68
33926	Sharpener Shaft for 13616	A5	14956	Tie Rod for 13616	B21	AJ178	Grain Head Hunting for 13616	B69
33927	Screw for 13616	A6	AJ167	Self-Tapping Screw for 13616	B22	14997	Screw for 13616	B70
33928	Nut for 13616	A7	14957	Slice Deflector for 13616	B23	AJ179	Group Plate for 13616	B71
33929	Screw for 13616	A8	14958	Screw for 13616	B24	14999	Screw TC for 13616	B72
33930	Washer for 13616	A9	14959	Circlip for 13616	B25	15000	Slide Bar Spring for 13616	B73
33931	Screw for 13616	A10	14960	Circlip for 13616	B26	AJ180	Round Bar for 13616	B74
33932	Push Knob for Sharpener for 13616	A11	33911	Pulley Bearing for 13616	B27	15137	Carriage for 13616	B75
33933	Ball Bearing for 13616	A12	63300	Pulley for 13616	B28	15003	Carriage Screw for 13616	B76
33934	Spring for 13616	A13	63303	Belt for 13616	B29	15004	Carriage Nut for 13616	B77
33935	Washer for 13616	A14	AJ168	Spindle Pin for 13616	B30	15005	Pin for 13616	B78
33936	Screw for 13616	A15	14964	Screw for 13616	B31	AJ181	Bearing for 13616	B79
33937	Washer for 13616	A16	14965	Screw TC for 13616	B32	15007	Screw for 13616	B80
33984	Sharpener Housing for 13616	A17	13585	Blade 40-3-180 for 13616	B33	15008	Wing Nut for 13616	B81
33939	Grinding Shaft for 13616	A18	14966	Screw for 13616	B34	15009	Plate for 13616	B82
33914	G Stone 40x08x06 for 13616	A19	63321	Blade Cover for 13616	B35	15010	Motor Adjustment Bar for 13616	B83
33941	Washer for 13616	A20	AJ169	Nut for 13616	B36	15011	Spring for Adjustment Bar for 13616	B84
33942	Nut for 13616	A21	14976	Wrist Guard Plate for 13616	B46	15012	Motor for 13616	B85
17212	Omcan F Stone 45x08x06 for 13616	A22	AJ170	Pressing Knob for 13616	B47	15013	Screw for 13616	B86
33944	Honing Shaft for 13616	A23	AJ171	Screw T.P.S.V. for 13616	B48	AJ182	Vent for 13616	B87
33945	Sharpener Cover for 13616	A24	14978	Meat Grip for 13616	B49	15015	Motor Pin for 13616	B88
33946	Spring for 13616	A25	14979	Pin for 13616	B50	15016	Circlip for 13616	B89
AJ164	Case for 13616	B1	14981	Lock for 13616	B52	14933	Foot for 13616	B90
14939	Screw for 13616	B2	14982	Meat Plate for 13616	B53	AJ183	Flat Guard Screw for 13616	B91
AJ165	Graduated Knob for 13616	B3	14983	Screw for 13616	B54	AJ184	Allen Screw for 13616	B93
14942	Screw for 13616	B4	14985	Meat Plate Support for 13616	B56	15022	Bottom Cover for 13616	D4
14943	Rivet for 13616	B5	14903	Carriage Knob for 13616	B57	18933	Micro Switch for 13616	D10
14944	Screw for 13616	B6	AJ172	Screw for 13616	B58	33947	Tie Rod for Micro Switch for 13616	D11
14945	Plate for 13616	B7	AJ173	Square Bar for 13616	B59	33948	Screw for 13616	D13
64813	On/Off Switch Green/Red for 13616	B8	AJ174	Bead for 13616	B60	33949	Safety Switch Holder for 13616	D14
14946	Capacitor 12.5UF 250V for 13616	B9	AJ175	Corrugated Washer for 13616	B61	33950	Pivot Chuck for 13616	D15
14947	Clamp for 13616	B10	AJ176	Cam for 13616	B62	17685	Complete Meat Tray Assy. for 13616	
14948	Screw TC for 13616	B11	14992	Cam Screw for 13616	B63	44918	Complete Sharpening Assy. for 13616	
14950	Screw TE for 13616	B16	15019	Slide Support for 13616	B64			