



Gear-Driven Slicer
Model MS-IT-0350-H
Item 39631
Instruction Manual



Revised - 08/02/2018



Toll Free: 1-800-465-0234
Fax: 905-607-0234
Email: service@omcan.com
www.omcan.com

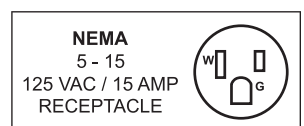


Table of Contents

Model MS-IT-0350-H

Section	Page
General Information -----	3 - 4
Safety and Warranty -----	4 - 5
Technical Specifications -----	6
Installation -----	6 - 7
Operation -----	7
Maintenance -----	8 - 10
Troubleshooting -----	11
Parts Breakdown -----	12 - 25
Electrical Schematics -----	26
Warranty Registration -----	27



General Information

Omcan Manufacturing and Distributing Company Inc., Food Machinery of America, Inc. dba Omcan and Omcan Inc. are not responsible for any harm or injury caused due to any person's improper or negligent use of this equipment. The product shall only be operated by someone over the age of 18, of sound mind, and not under the influence of any drugs or alcohol, who has been trained in the correct operation of this machine, and is wearing authorized, proper safety clothing. Any modification to the machine voids any warranty, and may cause harm to individuals using the machine or in the vicinity of the machine while in operation.

CHECK PACKAGE UPON ARRIVAL

Upon receipt of an Omcan shipment please inspect for external damage. If no damage is evident on the external packaging, open carton to ensure all ordered items are within the box, and there is no concealed damage to the machine. If the package has suffered rough handling, bumps or damage (visible or concealed), please note it on the bill of lading before accepting the delivery and contact Omcan within 24 hours, so we may initiate a claim with the carrier. A detailed report on the extent of the damage caused to the machine must be filled out within three days, from the delivery date shown in the shipping documents. Omcan has no recourse for damaged products that were shipped collect or third party.

Before operating any equipment, always read and familiarize yourself with all operation and safety instructions.

Omcan would like to thank you for purchasing this machine. It's of the utmost importance to save these instructions for future reference. Also save the original box and packaging for shipping the equipment if servicing or returning of the machine is required.

Omcan Fabrication et distribution Compañie Limité et Food Machinery d'Amerique, dba Omcan et Omcan Inc. ne sont pas responsables de tout dommage ou blessure causé du fait que toute personne ait utilisé cet équipement de façon irrégulière. Le produit ne doit être exploité que par quelqu'un de plus de 18 ans, saine d'esprit, et pas sous l'influence d'une drogue ou d'acohol, qui a été formé pour utiliser cette machine correctement, et est vêtu de vêtements de sécurité approprié. Toute modification de la machine annule toute garantie, et peut causer un préjudice à des personnes utilisant la machine ou des personnes à proximité de la machine pendant son fonctionnement.

VÉRIFIEZ LE COLIS DÈS RÉCEPTION

Dès réception d'une expédition d'Omcan veuillez inspecter pour dommages externes. Si aucun dommage n'est visible sur l'emballage externe, ouvrez le carton afin de s'assurer que tous les éléments commandés sont dans la boîte, et il n'y a aucun dommage dissimulé à la machine. Si le colis n'a subi aucune mauvaises manipulations, de bosses ou de dommages (visible ou cachée), notez-le sur le bond de livraison avant d'accepter la livraison et contactez Omcan dans les 24 heures qui suivent, pour que nous puissions engager une réclamation auprès du transporteur. Un rapport détaillé sur l'étendue des dommages causés à la machine doit être rempli dans un délai de trois jours, à compter de la date de livraison indiquée dans les documents d'expédition. Omcan n'a aucun droit de recours pour les produits endommagés qui ont été expédiées ou cueilli par un tiers transporteur.

General Information

Avant d'utiliser n'importe quel équipement, toujours lire et vous familiariser avec toutes les opérations et les consignes de sécurité.

Omcan voudrais vous remercier d'avoir choisi cette machine. Il est primordial de conserver ces instructions pour une référence ultérieure. Également conservez la boîte originale et l'emballage pour l'expédition de l'équipement si l'entretien ou le retour de la machine est nécessaire.

Omcan Empresa De Fabricacion Y Distribucion Inc. Y Maquinaria De Alimentos De America, Inc. dba Omcan y Omcan Inc. no son responsables de ningun daño o perjuicio causado por cualquier persona inadecuada o el uso descuidado de este equipo. El producto solo podra ser operado por una persona mayor de 18 años, en su sano juicio y no bajo alguna influencia de droga o alcohol, y que este ha sido entrenado en el correcto funcionamiento de esta máquina, y ésta usando ropa apropiada y autorizada. Cualquier modificación a la máquina anula la garantía y puede causar daños a las personas usando la máquina mientras esta en el funcionamiento.

REVISE EL PAQUETE A SU LLEGADA

Tras la recepcion de un envio Omcan favor inspeccionar daños externos. Si no hay daños evidentes en el empaque exterior, Habra el carton para asegurarse que todos los articulos solicitados estén dentro de la caja y no encuentre daños ocultos en la máquina. Si el paquete ha sufrido un manejo de poco cuidado, golpes o daños (visible o oculto) por favor anote en la factura antes de aceptar la entrega y contacte Omcan dentro de las 24 horas, de modo que podamos iniciar una reclamación con la compañía. Un informe detallado sobre los daños causados a la máquina debe ser llenado en el plazo de tres días, desde la fecha de entrega que se muestra en los documentos de envío. Omcan no tiene ningun recurso por productos dañados que se enviaron a recoger por terceros.

Antes de utilizar cualquier equipo, siempre leer y familiarizarse con todas las instrucciones de operación y seguridad.

Omcan quisiera darles las gracias por la compra de esta máquina. Es de la máxima importancia para guardar estas instrucciones para referencias en el futuro. También guarde la caja original y el embalaje para envío del equipo si el mantenimiento o la devolución de la máquina es necesaria.

Safety and Warranty

MECHANICAL SAFETY DEVICES

The slicer is manufactured according to the EEC 2006/42 Machinery Directive.

The mechanical safety devices are the following:

- Product holder removable only with the slice thickness control on zero (slice thickness plate positioned to protect the blade). After removing the product holder the slice thickness plate is mechanically clamped.

Safety and Warranty

- Protection devices mounted on the product holder to prevent the operator from any accidental contact with the blade.
- Blade guard. This fixed ring protects that part of the blade which is not used for the cutting operation.
- A special mechanical safety device to sharpen the blade keeping the fingers of the operator away from the cutting edge of the blade.

ELECTRICAL SAFETY DEVICES

The electrical safety devices in accordance with the EN 60204 standards are the following:

- Start and stop push buttons.
- Control circuit provided with electric servo-control; in any case of blade clamping the machine must be restarted manually.
- Safety device to stop the rotation of the blade if the clamping handle of the blade guard is released.

WARNING

When the machine is not used:

- Make sure that it is off.
- Re-position the slice thickness control to zero.

Do not remove the labels placed on the machine and replace them if damaged.

1 YEAR PARTS AND LABOUR WARRANTY

Within the warranty period, contact Omcan Inc. at 1-800-465-0234 to schedule an Omcan authorized service technician to repair the equipment locally.

Unauthorized maintenance will void the warranty. Warranty covers electrical and part failures, not improper use.

Please see www.omcan.com/warranty.html for complete info.


WARNING:

The packaging components are classified as normal solid urban waste and can therefore be disposed of without difficulty.

In any case, for suitable recycling, we suggest disposing of the products separately (differentiated waste) according to the current norms.

DO NOT DISCARD ANY PACKAGING MATERIALS IN THE ENVIRONMENT!

Technical Specifications

Model	MS-IT-0350-H
Blade Size	14" / 350mm
Power	0.4 HP / 0.3 kW
Cheese Slicing	
Slicing Volume*	8 hours or more
RPM	250
Cutting Size	12.2" x 9.8" / 310 x 250mm
Cut Thickness	0" - 1" / 0 - 25mm
Electrical	110V/60/1
Weight	110 lbs. / 50 kgs.
Dimensions	26.4" x 28" x 21.7" / 670 x 710 x 550mm
Item Number	39631

*Results may vary due to product consistency and temperature

Installation

The slicer must be mounted horizontally on a stable, robust and antiskid base adequate to support its weight. The suggested height of the working table is of about 800mm. It must be checked that the product holder is not clamped and the product to be cut can be easily loaded.

WARNING: To prevent the risk of crushing hazard, locate the machine in a manner that allows a clear space between the moving table and any permanent structure.

PRELIMINARY CLEANING

Before connecting the plug clean off the protective oil from the machine.

WARNING

The working table must always be cleaned.

ELECTRICAL SUPPLY

The machine must be installed in the proximity of a mains socket. Check that the power supply voltage corresponds to that described on the information label and that it is connected to an adequate earth.

1. Connect the plug.
2. Check that the blade cover fastener handle is tight screwed.
3. Check that the blade sharpener is lowered and the protective cover is closed.

MANUAL FUNCTIONING

1. Press push button blade start.

SLICER FUNCTIONING AND USE

The following products can be sliced: sausages, ham, cheese, bread. If large quantities of bread or cheese are usually cut it is advisable to mount a teflon coating.

WARNING

The following cannot be sliced:

- Not-eatable products.
- Foodstuffs with bones.
- Frozen products.

MANUAL FUNCTIONING

Rotate the product holder release handle in a clockwise direction by 180°.

Operation

HOW TO LOAD THE PRODUCT TO BE CUT

1. Check that the slicer is off and position the slice thickness control to zero.
2. Push the product holder towards the operator.
3. Lift and rotate the product pusher: the pusher can fall back, this is normal.
4. Place the product to be cut against the wall of the product holder and the slice thickness plate.
5. Position the product pusher on the product to be cut far from the slice thickness plate. The product is fed to the slice thickness plate by gravity making the cut easier.
6. Rotate the slice thickness control to the thickness desired.

DANGER

Do not touch the carriage or the product holder when the machine is working.

MANUAL FUNCTIONING

1. Rotate the carriage release handle in a clockwise direction by 180°.
2. Press push button to start the blade.
3. With constant speed, according to the product to be sliced features, you can push the product holder tray to its end stroke in blade direction. You can then return in the operator position and repeat this operation.

After cutting the product, reposition the product holder towards the operator. By pressing push button stop blade the rotation of the blade stops. Re-position the slice thickness control to zero and unload the product.

Maintenance

BLADE SHARPENING

Whenever the cut is not satisfactory, sharpen the blade. The time interval between a sharpening and the following depends on the intensity of use of the slicer and on the kind of food you cut. Replace the blade when the diameter becomes 10mm less than the nominal diameter. For the replacement, ask the assistant service closest to you.

WARNING

The replacement of the blade is dangerous operation. Should the sharpening quality be not satisfactory, replace the stones by contacting Omcan.

SHARPENING OPERATION

DANGER

The sharpening operation must be performed during the manual functioning.

For a correct sharpening of the blade follow these instructions:

1. Clean the blade removing any greasy residue.
2. Make sure that the machine is off.
3. Rotate the slice thickness control to zero to make sure that the blade is covered by the slice thickness plate.

IMPORTANT

During the following operations the blade must always be covered by the removable protection.

4. Lift the sharpener cover.
5. Slip off completely the sharpener and spin it 180 degrees.
6. Replace the sharpener device.
7. Push the push button blade start to start the machine.
8. Sharpening: Press the sharpening wheel for about 10-15 seconds.
Then press simultaneously also the grinding stone for two seconds.
Contemporaneously loosen the two grind stones.
The sharpening and honing take place then simultaneously.

ATTENTION: for a suitable effect please execute sharpening for 10-15 seconds approx.

9. After sharpening press the blade stop push button.
10. Lift and rotate 180 degrees the sharpener and reallocate it into its initial position. Loosen the handle rotating it clockwise to block the sharpener. Lower the sharpener cover.

CLEANING OF THE GRINDING WHEELS

To obtain an excellent sharpening the grinding wheel must always be clean. Remove dirt and grease with alcohol and the supplied special brush. Be sure to clean and sanitize the blade after sharpening.

MAINTENANCE

All cleaning and maintenance operations must only be carried out with the machine disconnected and isolated from the mains supply and the slice thickness control on zero.

CONTROL OF THE AIR GRATING

An air grating for the motors ventilation is placed in the lower side of the machine. Keep the section-holes free and clean them with a brush at regular intervals.

CHECK OF THE ELECTRIC CABLE

It is recommended to check the wear of the electric cable at regular intervals.

SPARE PARTS

In the event that replacement parts need to be fitted, request only original spare parts.

CLEANING

The machine must be cleaned once a day or more frequently if necessary. Clean all the parts using a cloth sprinkled with water and washing up liquid (do not use strong detergents) and a brush.

WARNING

Do not use water jet

DANGER

During the cleaning operations take great care: danger of accident.

COMPONENTS REMOVAL

PRODUCT HOLDER

1. Loose the product holder by rotating the product holder clamping handle in a counterclockwise direction.
2. Position to zero the slice thickness control to remove the product holder.
3. Push the product holder towards the operator until it clicks. The click will inform the operator that the product holder is clamped.
4. Lift the last slice device from the guide bar.
5. Lift the product holder from the carriage.

IMPORTANT

The slice thickness control is clamped on zero.

Maintenance

BLADE COVER

1. Rotate the slice deflector and keep it away from the blade.
2. Loose the blade cover fastener handle by rotating it in a counterclockwise direction.
3. Push on the handle in the direction indicated by the arrow to lift the blade cover from the blade.
4. Lift the blade cover.

ATTENTION

Once removed the blade cover, an interlocking device stops the rotation of the blade.

DANGER

During the cleaning operations of the blade, pay attention to an accidental contact with it.

5. Press a damp cloth on the front side of the blade and move slowly from the center towards the edge in the direction of the arrow.
6. Follow these instructions to clean the back side of the blade.
7. With a cloth dry both sides of the blade following this procedure.
8. Insert a damp cloth between the blade and the protection ring. Pull it outwards and rotate it to clean the internal side of the protection ring.
9. After cleaning re-position the blade cover, insert the fastener and screw in a clockwise direction to clamp the blade cover. Lower the sharpener protective cover.

IMPORTANT

Leave all the parts to soak in warm water and washing-up liquid (do not use strong detergents) and clean them by using a brush or a cloth. Rinse them in warm water and dry them.

To assemble the machine follow the reverse procedure as described for disassembly.

GUIDES LUBRICATION

This operation must be performed after cleaning the slicer or whenever the sliding is difficult. Use food safe oil only.

LUBRICATION OF THE GUIDE BAR OF THE LAST SLICE DEVICE

1. Drop some food grade oil on the bar.
2. Let the last slice device slide on the guide bar.

LUBRICATION OF THE GUIDE BAR OF THE PRODUCT HOLDER CARRIAGE

1. Push the product holder towards the operator.
2. Pour the food grade lubricating oil into the special carriage bar lubricator.
3. Push the product holder to and from and repeat the operation. Re-position it towards the operator.

Troubleshooting

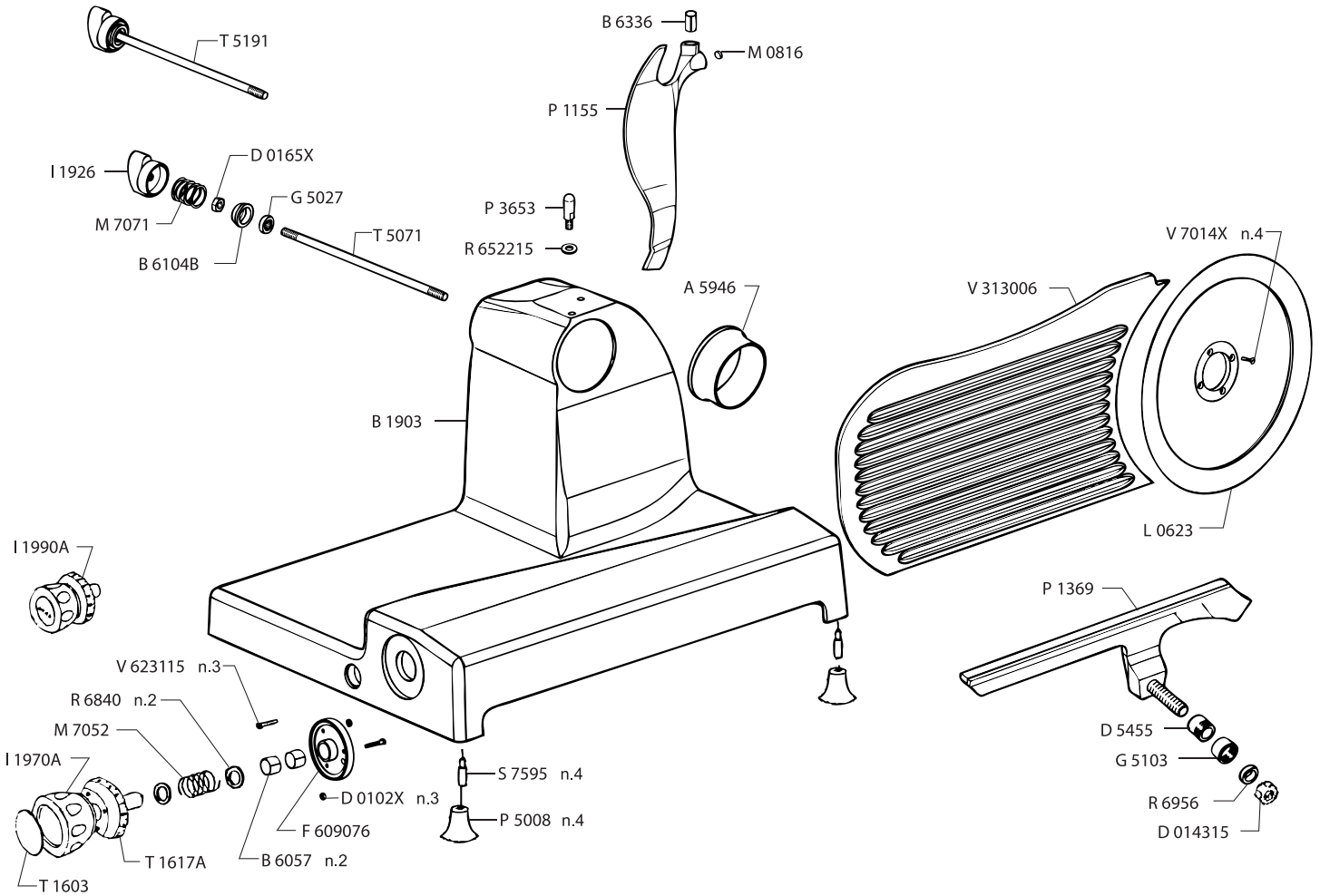
PROBLEM	CORRECTIVE ACTION
The machine vibrates, overheats and emits a foul smell.	Stop it immediately and check that the voltage corresponds to that described on the rating label.
The blade cannot be sharpened any longer. The sharpening is no regular.	Clean the grinding wheels of the sharpener and check the wear of the blade.
On pushing the start push button the machine does not start.	Check if power missing. Check the safety devices.
The carriage and the last slice device run with difficulty.	Lubricate the guide bars.

REFERENCE

Item Number	Model Number	Description	Manufacturer Model Number
39631	MS-IT-0350-H	Meat Slicer Gear Driven 14" / 350mm Blade with Fixed Ring Knife Guard 0.4HP / 300W 110V/60/1 CSST	H35S

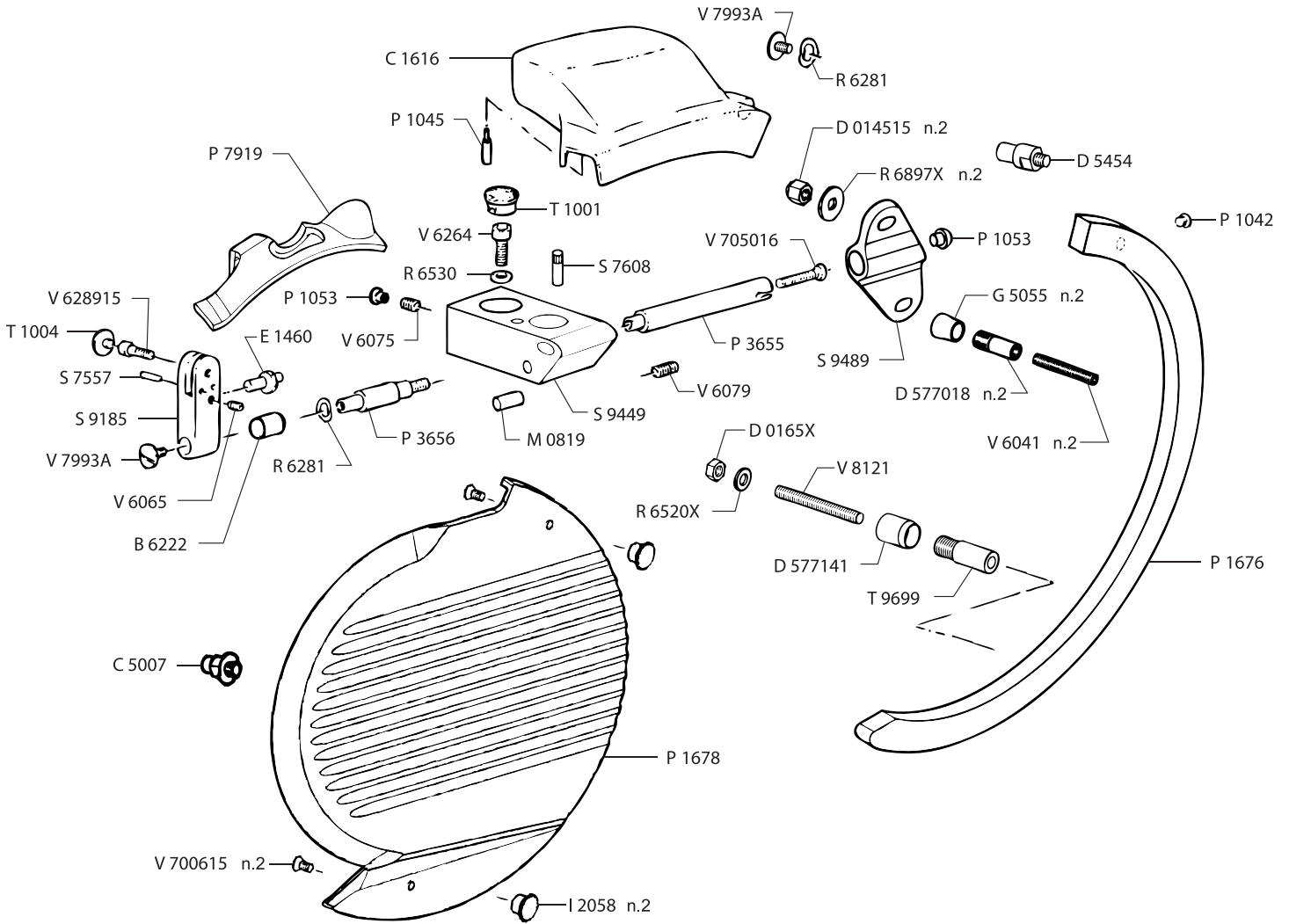
Parts Breakdown

Model MS-IT-0350-H 39631



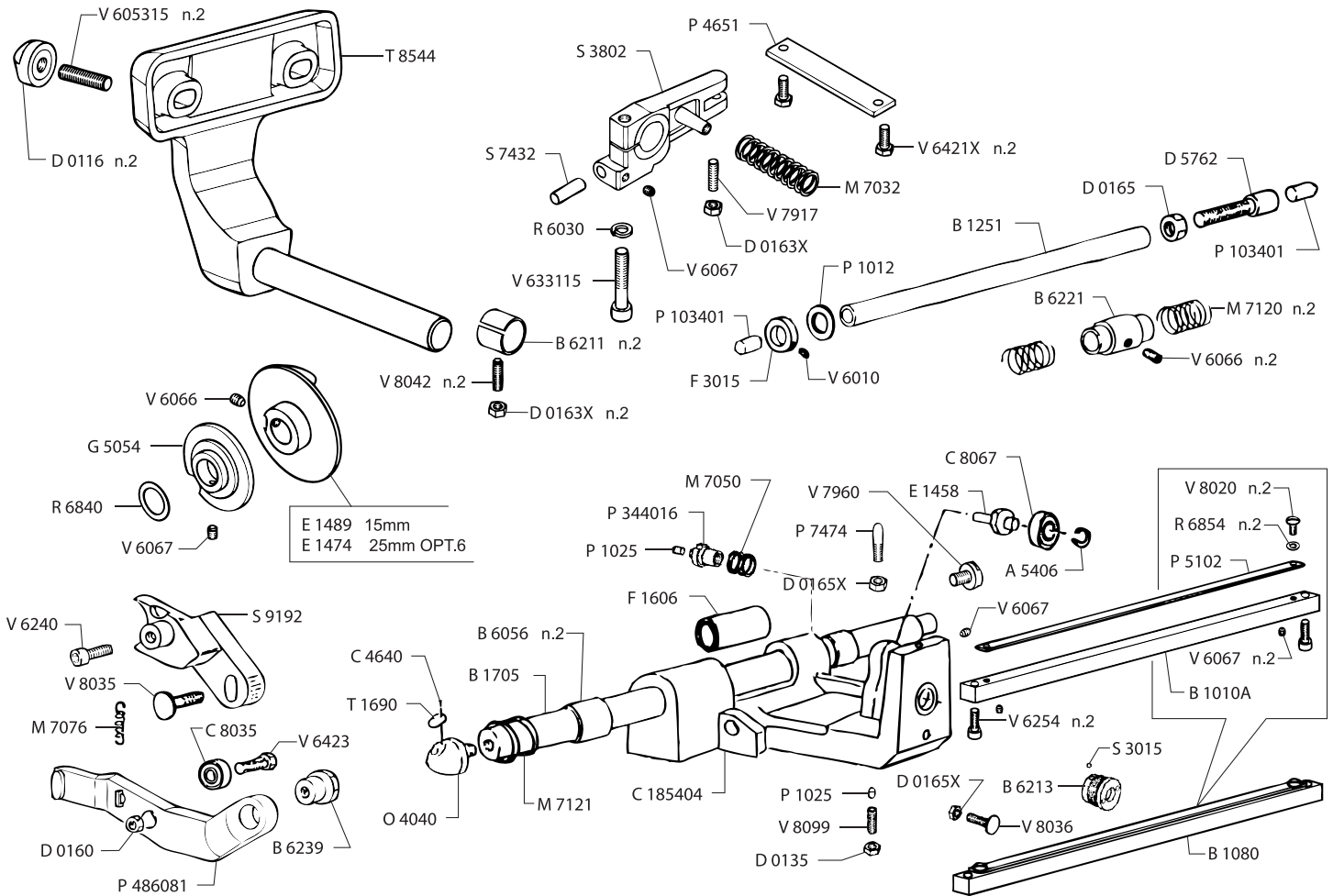
Parts Breakdown

Model MS-IT-0350-H 39631



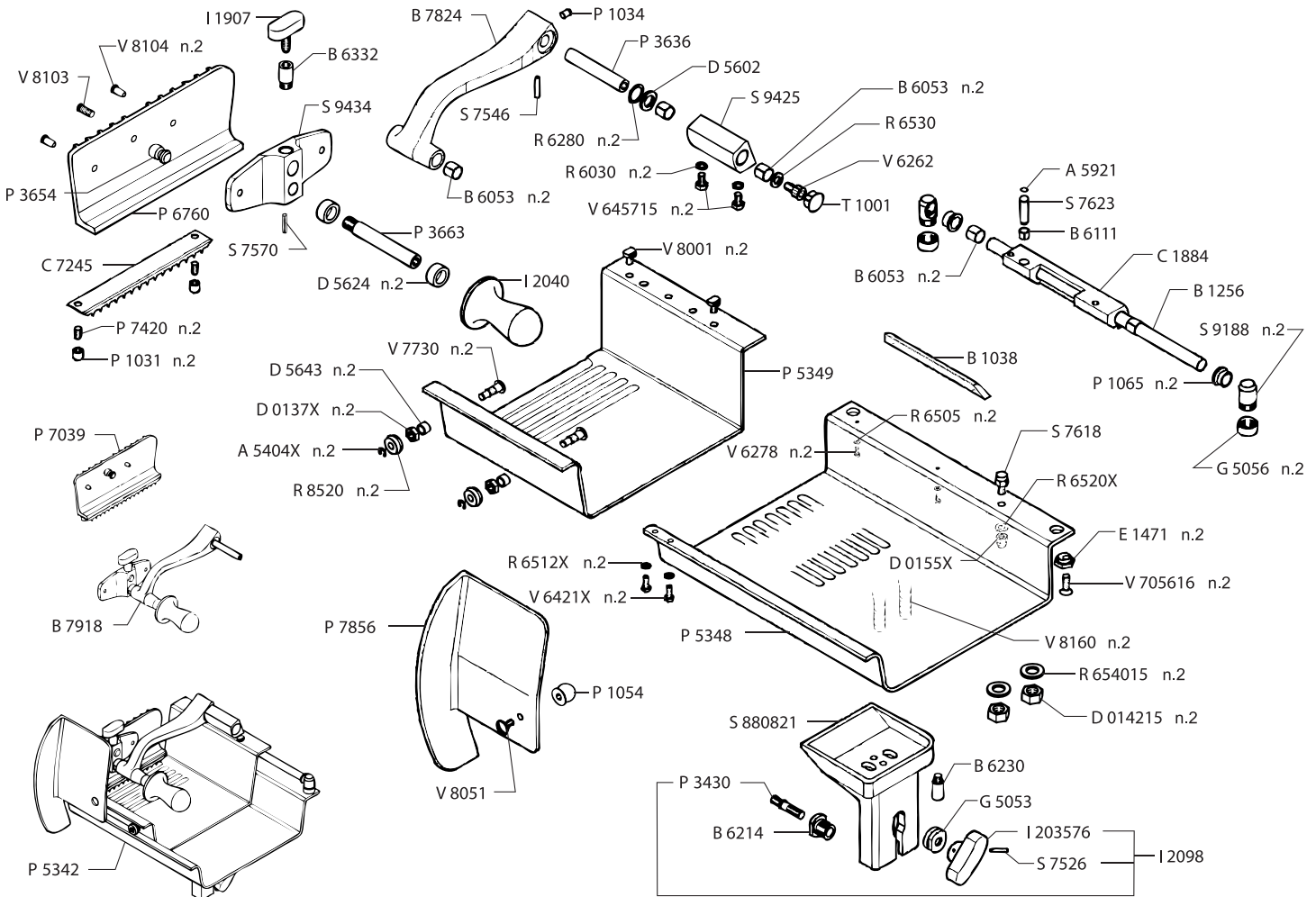
Parts Breakdown

Model MS-IT-0350-H 39631



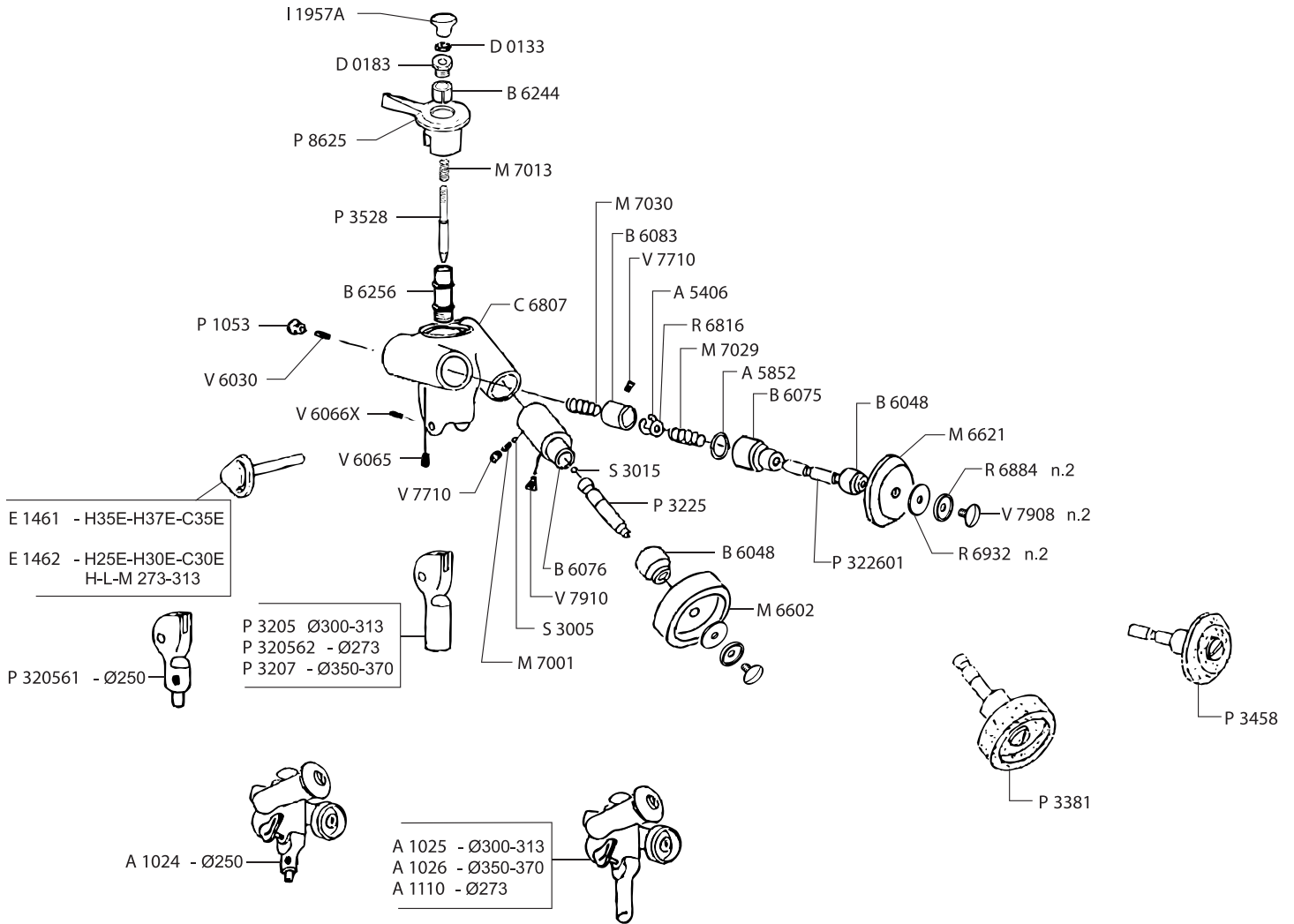
Parts Breakdown

Model MS-IT-0350-H 39631



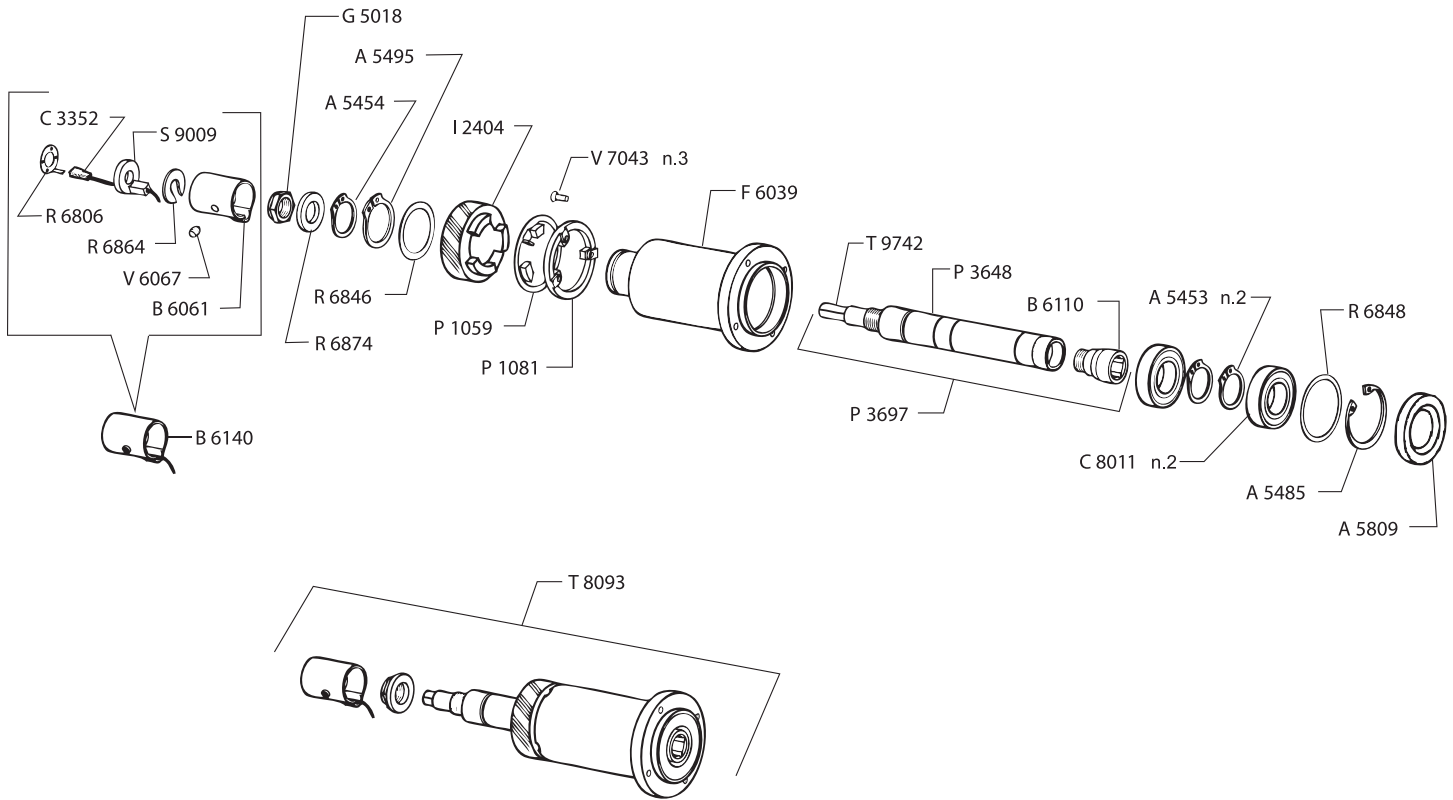
Parts Breakdown

Model MS-IT-0350-H 39631



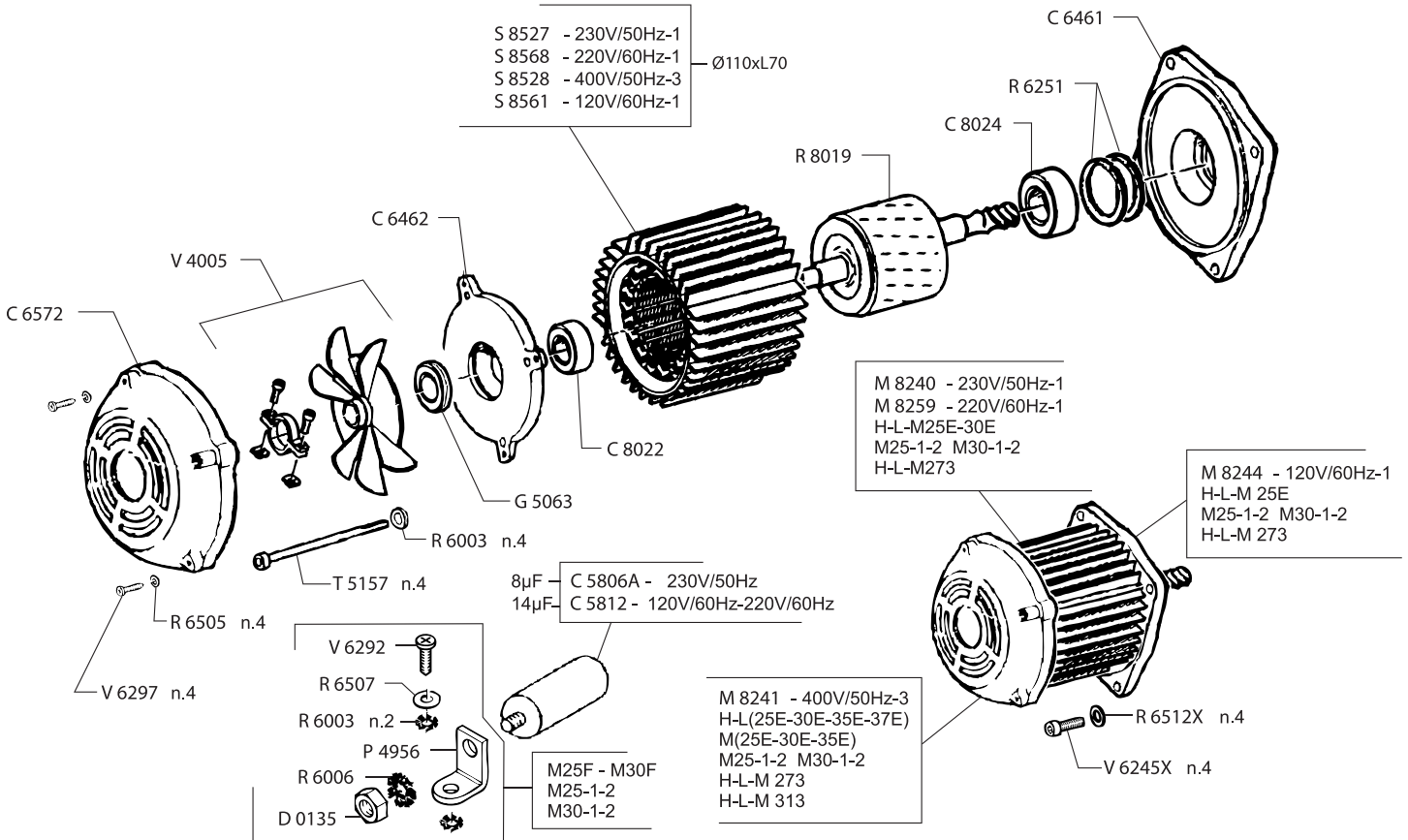
Parts Breakdown

Model MS-IT-0350-H 39631



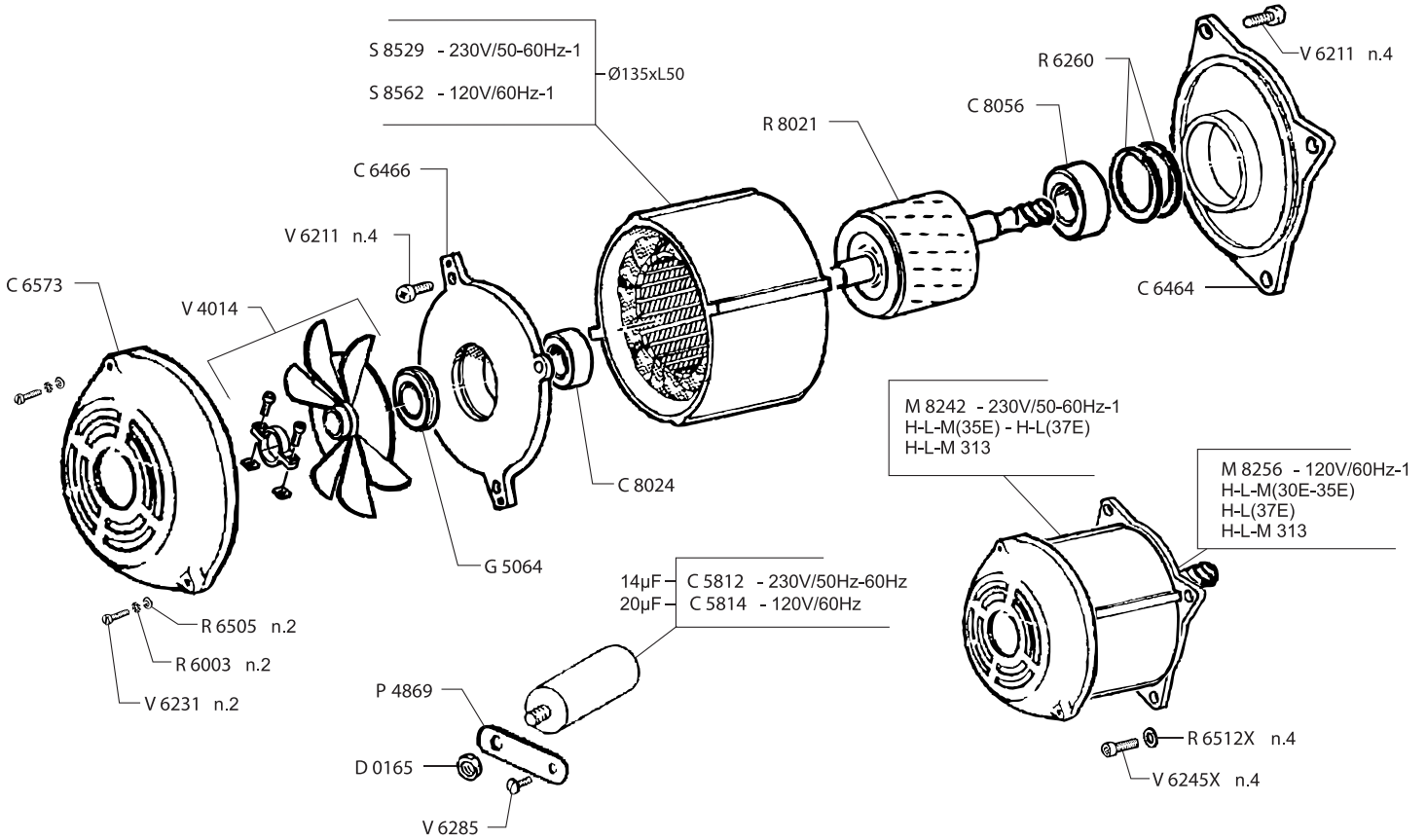
Parts Breakdown

Model MS-IT-0350-H 39631



Parts Breakdown

Model MS-IT-0350-H 39631

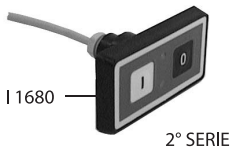
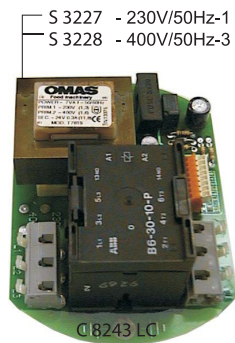
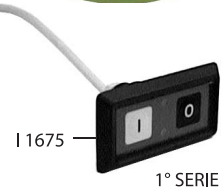
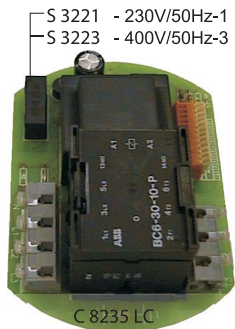
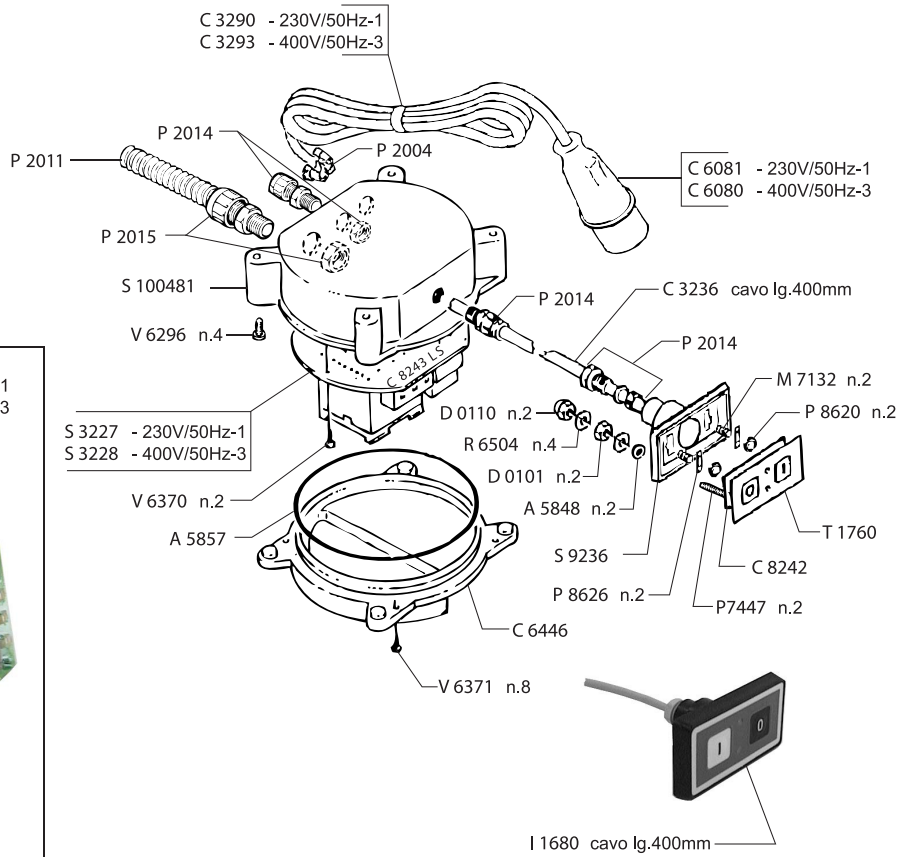


Parts Breakdown

Model MS-IT-0350-H 39631

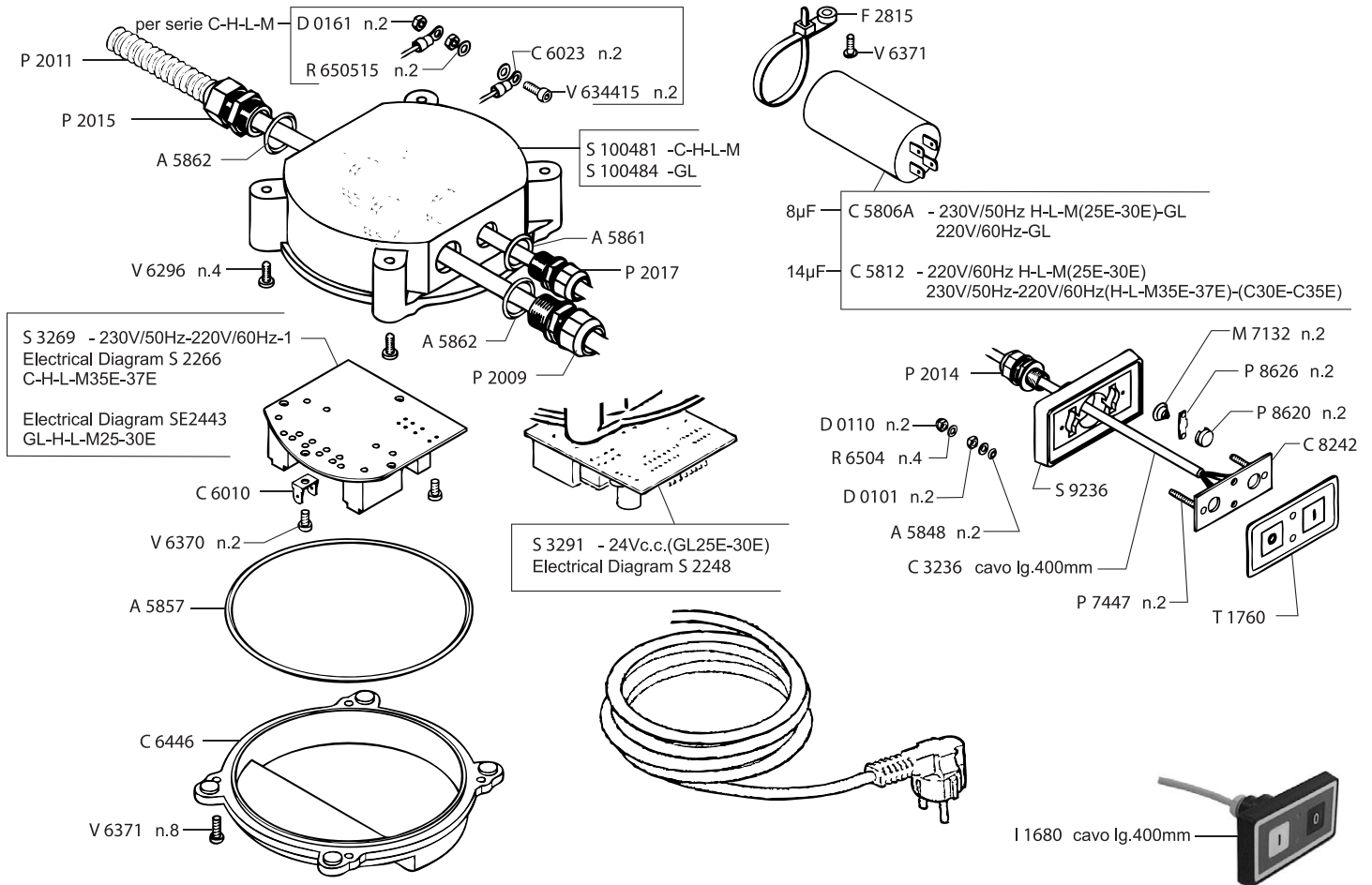
Every series switch pad needs to be always coupled only with its specific series P.C.B.

IT IS BASIC NOT TO USE FIRST SERIES SWITCH PAD WITH THE NEW SECOND SERIES P.C.B. AND VICEVERSA



Parts Breakdown

Model MS-IT-0350-H 39631



Parts Breakdown

Model MS-IT-0350-H 39631

Item No.	Description	Position	Item No.	Description	Position	Item No.	Description	Position
77583	Sharpener (Support+Stones) for H35S	A1024	17312	Bushing 22x25x20 for H35S	B6211	17335	Bear.2RS-6203 17x40x12 for H35S	C8022
36532	Sharpener Assembly for H35S	A1025	36563	Carriage Bushing for H35S	B6213	16925	Bearing 2RS-6204 20x47x14 for H35S	C8024
16900	Sharpening Assembly for H35S	A1026	36564	Bushing for Carriage Support 23mm for H35S	B6214	36630	Bearing 5x16x6.5 for H35S	C8035
36536	Ring EL.Benzing 6 Stainless Steel for H35S	A5404X	36566	Bushing for Carriage Springs for H35S	B6221	36631	Bearing 2RS-6205 25x52x15 for H35S	C8056
16902	Ring EL.Benzing 8 for H35S	A5406	36567	Bushing DU 12x14x25 for H35S	B6222	16926	Bearing 2RS-6000 (10x26x8) for H35S	C8067
17281	Ring EL.Seeger Ext.25 for H35S	A5453	60449	Meat Tray Support Bushing for H35S	B6230	60423	Touch Pad Gasket for H35S	C8242
77585	Ring EL.Seeger EST.25 SER.Heavy for H35S	A5454	36569	Fixing Lever Bushing for H35S	B6239	36591	Carriage Support for H35S	C185404
19484	Ring 52 for H35S	A5485	17313	Bushing DU 14x15x16 for H35S	B6244	19637	Nut M3 for H35S	D0101
19612	Ring 33 for H35S	A5495	23646	Sharpener Pivot Ferrule for H35S	B6256	77504	Stainless Steel Nut U5587 M4 for H35S	D0102X
17283	Oil Seal 25x52x10 for H35S	A5809	77552	Bushing for Plate for H35S	B6332	77612	Self-Locking Nut M3 UNI7473 for H35S	D0110
77601	Oil Seal for H35S	A5848	77503	Bushing DU 12x14x30 INOX for H35S	B6336	77535	Special Nut M10 for H35S	D0116
17287	O-Ring 123 17.86x2.62 for H35S	A5852	60443	Pusher Arm for H35S	B7824	16928	Nut U5589 M6 for H35S	D0133
77602	O-Ring 4500 for H35S	A5857	77518	Sharpener Cover for H35S	C1616	19639	Nut M8 for H35S	D0135
77603	O-Ring 2037 9,25x1,78 for H35S	A5861	60444	Meat Tray Handle Sliding Shaft for H35S	C1884	36638	Nut U5589 M10 Stainless Steel for H35S	D0137X
77604	O-Ring 2056 14x1,78 for H35S	A5862	77605	Assembly Wiring 6 Poles LG.400 for H35S	C3236	19642	Nut M8 for H35S	D0155X
77547	Pin Stop Ring for H35S	A5921	78287	Power Cord 230/50 for H35S	C3290	36643	Nut U5588 M5 for H35S	D0160
77502	Shaft Sealing Ring Ø98x42 for H35S	A5946	79105	CAVO (ROTOLI) FROR 450/750V 4X1 for H35S	C3293	36645	Normal Nut U5588 M4 for H35S	D0161
36544	Carriage Rod for H35S	B1010A	79263	Contact Pin for H35S	C3352	36646	Nut U5588 M6 Stainless Steel for H35S	D0163X
77548	Tray Rod for H35S	B1038	36601	Rivet 1.9x5 for H35S	C4640	36647	Nut U5588 M8 for H35S	D0165
60431	Complete Carriage Rail Assembly for H35S	B1080	36607	Blade Cover Bolt Keeper 14x14 M for H35S	C5007	36648	Nut U5588 M8 for H35S	D0165X
36548	Shock Absorber Bar 12x170 for H35S	B1251	36608	Capacitor 8 MF 400V for H35S	C5806A	36651	Sharpener Support Nut for H35S	D0183
79618	Sliding Bar for Carriage for H35S	B1256	16913	Capacitor 14 MF 400V for H35S	C5812	79264	Blade Support Screw for H35S	D5454
60430	Carriage Shaft for H35S	B1705	36609	Capacitor 20 µF 250V for H35S	C5814	60435	Meat Carriage Guard Holder Spacer for H35S	D5455
60432	Body Casing for H35S	B1903	77607	Connector BM00219 for H35S	C6023	19648	Knife Spacer for H35S	D5602
16904	Bushing Sharpener for H35S	B6048	77608	Three-Phase Connector 3x16A for H35S	C6080	77556	Right Spacer INT90 for H35S	D5624
16905	Bushing DU 16x18x15 for H35S	B6053	77609	Connettore Spina Monofase 2x16A for H35S	C6081	17341	Spacer D.10.5x14 H.9 for H35S	D5643
17304	Bushing for H35S	B6056	77610	Box Cover for P.C. Board for H35S	C6446	36661	Carriage Shock Absorber Spacer for H35S	D5762
17305	Bushing DU 18x20x15 for H35S	B6057	60461	Motor Frontplate for H35S	C6461	77505	Stainless Steel Nut U5588 M12 for H35S	D014215
19514	Bushing Guard A310 for H35S	B6061	60455	Motor Backplate for H35S	C6462	60438	Meat Carriage Guard Holder Screw for H35S	D014315
16906	Bush Sharpening for H35S	B6075	36614	Cover Anter.Motor H (Diam.135) for H35S	C6464	77555	Domed Nut Din 917 M8 Stainless Steel for H35S	D014515
16907	Bush Sharpening for H35S	B6076	36615	Back Motor Cover for H35S	C6466	36665	Locknut Spacer for H35S	D577018
17307	Bushing Sharpener for H35S	B6083	60453	Motor Fan Cover Diam.110 for H35S	C6572	77519	Spacer Eccentrico for H35S	D577141
19630	Bushing Fastener HBC for H35S	B6104B	36617	Motor Fan Cover for H35S	C6573	77590	Cam for Sharpener for H35S	E1461
78265	Bushing Funnel for H35S	B6110	19534	Housing Sharpener H for H35S	C6807	17345	Cam Bearing for H35S	E1458
77550	Bushing DU 10x12x10 for H35S	B6111	19537	Rack for H35S	C7245	36677	Cam Pin for H35S	E1460
77588	Bushing Fastener Guard Knife A310 A for H35S	B6140	17334	Bearing 2Z-6205 25x52x15 for H35S	C8011	60450	Cam for Sharpener for H35S	E1462

Parts Breakdown

Model MS-IT-0350-H 39631

Item No.	Description	Position	Item No.	Description	Position	Item No.	Description	Position
77558	Eccentric for H35S	E1471	19250	Spring 24.8x1.8x15 for H35S	M7071	77511	Pin Deflector for H35S	P3653
19564	Cam 25mm for H35S	E1474	36746	Spring 7x0.8x23 Cam for H35S	M7076	77565	Pivot Pusher for H35S	P3654
79267	Cam Eccentric Stroke mm.16 for H35S	E1489	19248	Spring 15.6x20x2.2 for H35S	M7120	77523	Knife Cover Support Pin for H35S	P3655
36680	Carriage Felt for H35S	F1606	36749	Carriage Bar Spring 25-28-1.5 for H35S	M7121	77524	Pin for Protec.Support for H35S	P3656
77614	Nylon Cable Tie (Diam.45x200) for H35S	F2815	78283	Screw for H35S	M7132	77566	Pivot Pusher for H35S	P3663
36682	Unhook Friction Clasp 12x22x8 for H35S	F3015	60462	Motor 230-50 H for H35S	M8240	77594	Assembly Driving Pivot for H35S	P3697
77591	Suppor Blade Flange for H35S	F6039	60459	Motor EL.400-50 H for H35S	M8241	19832	Flat Bar for H35S	P4651
36686	Handling Flange for H35S	F609076	60470	Motor 240/50/1 for H35S	M8242	60469	Motor Straight Bracket for H35S	P4869
17351	Locknut for H35S	G5018	17382	Motor for H35S	M8244	60458	Motor L-Bracket for H35S	P4956
36689	Stainless Steel Locknut for H35S	G5027	17383	Motor for H35S	M8256	16961	Foot for H35S	P5008
36691	Ring for Bushing for H35S	G5053	60463	Motor 220/60 for H35S	M8259	79617	Sliding Flat Bar for H35S	P5102
36692	Ring for Cam for H35S	G5054	19791	Oiler for H35S	O4040	60446	Meat Tray Slider Bottom Plate for H35S	P5348
36695	Ring Support Cap for H35S	G5055	36759	Rubber Shock Absorber 12x19x2 for H35S	P1012	60445	Meat Tray Slider Top Plate for H35S	P5349
77559	Plate Bar Supp. Ring 250/273 for H35S	G5056	36760	Pin Ttray Shock-Absorber for H35S	P1025	60439	Meat Tray Pusher Plate for H35S	P6760
60457	Index Locknut M4 2 P1 for H35S	G5063	19796	Plastic Shock for H35S	P1031	19655	Meat Grip Stud H for H35S	P7420
36697	Logging Lock Nut GL25 for H35S	G5064	17392	PL.Shock Absorb 8.5x20 for H35S	P1034	60424	Touch Pad Screw for H35S	P7447
60436	Meat Carriage Guard Holder Bushing	G5103	19797	Nylon Shock 8.5x8 for H35S	P1042	77539	Stud Plate M8x25x35 for H35S	P7474
77615	Assembly P.C.B. C-H-M for H35S	I1675	19798	Plastic Shock for H35S	P1045	19850	Protection for H35S	P7856
17352	Touch Pad Start/Stop Push Button for H35S	I1680	36762	Rubber Plug for H35S	P1053	77525	Mobile Protection for H35S	P7919
19580	Handle TS8 for H35S	I1907	77562	Shock Absorber for H35S	P1054	78282	Lock Washer for H35S	P8620
17356	Fastener Handle for H35S	I1926	16955	Shock Absorber for H35S	P1059	36865	Sharpener Operating Handle for H35S	P8625
19587	Sharpener Knob for H35S	I1957A	77563	Shock Absorber for H35S	P1065	78284	Bracket for H35S	P8626
36705	Adjustment Knob for H35S	I1970A	17395	Shock Absorber for H35S	P1081	36761	Shock Absorber for H35S	P103401
36708	Assembly Index Knob for H35S	I1990A	60434	Meat Carriage Guard Holder for H35S	P1369	60451	Pivot Sharpener H-L-M25R for H35S	P320561
17363	End Grip Handle for H35S	I2040	60427	Blade Guard for H35S	P1676	17419	Pin Truing for H35S	P322601
36714	Blade Cover Handling for H35S	I2058	60425	Blade Cover for H35S	P1678	79270	Lock Plate Pivot H for H35S	P344016
36717	Knob Assembly for H35S	I2098	77616	Strain Relief for H35S	P2004	77537	Ecc. Locking Plate for H35S	P486081
17364	Nylon Gear DP 56, 80, Z29 for H35S	I2404	36776	Strain Relief for H35S	P2009	19657	Washer 4 for H35S	R6003
18220	Knob Handling for H35S	I203576	60421	Eelectrical Conduit for H35S	P2011	19659	Washer 8 for H35S	R6006
36728	Knife for H35S	L0623	36778	Wire-Press for H35S	P2014	19661	Washer 8 for H35S	R6030
79268	Nut for H35S	M0816	36779	Core-Hitch+Nut for H35S	P2015	78258	Washer 30.5x46.5x0.6 for H35S	R6251
77520	Magnet Ø8 x 25 for H35S	M0819	36780	Wire Pusher for H35S	P2017	19665	Washer for H35S	R6260
36737	Grinding Stone C for H35S	M6602	19811	Pin Sharpener for H35S	P3205	19666	Washer for H35S	R6280
36739	Honing-Finishing Stone for H35S	M6621	17416	Pin Sharpener for H35S	P3207	19667	Washer 12x17x2 for H35S	R6281
36741	Spring 2.9x4x12 Stainless Steel for H35S	M7001	36782	Pin.Grinding for H35S	P3225	36880	Washer U6592 3 for H35S	R6504
17377	Spring 8.5x1.0x25 for SS H35S	M7013	17427	Assembly Grinding Stone Pin for H35S	P3381	17455	Washer U6592 4 for H35S	R6505
17379	Spring 11.9x0.7x27 SS for H35S	M7029	36793	Pin Handle for H35S	P3430	36881	Washer U6593 5 (5.5x15x1.2) for H35S	R6507
17380	Spring 13.4x1.3x30 SS for H35S	M7030	17426	Assembly Honing Stone Pivot for H35S	P3458	36883	Washer U6592 6 Stainless Steel for H35S	R6512X
19776	Spring 14x1.5x60 for H35S	M7032	23645	Sharpener Pivot for H35S	P3528	36884	Washer U6592 8 Stainless Steel for H35S	R6520X
19782	Spring 19.5x1.5x16.7 for H35S	M7050	77564	Pin Support Meat Grip Arm H for H35S	P3636	19668	Washer 10 for H35S	R6530
17381	Spring 22.5x1.8x18 for H35S	M7052	79272	Knife Shaft for H35S	P3648	17458	Contact Washer for H35S	R6806

Parts Breakdown

Model MS-IT-0350-H 39631

Item No.	Description	Position	Item No.	Description	Position	Item No.	Description	Position
36889	Washer 10.5x16x1 for H35S	R6816	77571	Lock Pin Pusher Arm for H35S	S7623	37018	Screw STTC U6113 M6x6 for H35S	V6010
16969	Washer 18.2x25x0.5 for H35S	R6840	60465	Stator 230-50 H (Tubo Alettato) for H35S	S8527	37021	Screw for H35S	V6030
17460	Washer 34.2x46x0.5 for H35S	R6846	60467	Statore 400-50 H (Tubo Alettato) for H35S	S8528	60426	Stainless Steel Screw STEI U5923 M8x60 for H35S	V6041
19674	Washer for H35S	R6848	78259	Stator 230/50-60 for H35S	S8529	37023	Screw STEI U5929 M5x5 for H35S	V6065
77540	Washer 6,2x14x0,6 for H35S	R6854	60468	Statore 120-60 H (Tubo Alettato) for H35S	S8561	19691	Grub Screw M6x6 for H35S	V6066
77596	Switch Washer A310 for H35S	R6864	19870	Stator 120/60 for H35S	S8562	37024	Screw STEI U5929 M6x6 for H35S	V6066X
36892	Washer 17x30x4 for H35S	R6874	60466	Stator 220-60 for H35S	S8568	19692	Screw M6x8 for H35S	V6067
16972	Washer 5.5x19x2.5 for H35S	R6884	77597	Washer Bracket A310 for H35S	S9009	37025	Screw Stei U5929 M6x8 for H35S	V6067X
36893	Stainless Steel Special Washer 8.5x24x2 for H35S	R6897X	77527	Protec. Support for H35S	S9185	19694	Screw M8x10 for H35S	V6075
36897	Special Washer 5.5x22x1.5 for H35S	R6932	77572	Bracket for Plate Rod for H35S	S9188	37029	Screw STEI U5929 M8x20 for H35S	V6079
60437	Meat Carriage Guard Holder Washer for H35S	R6956	19181	Bracket Support for H35S	S9192	19697	Screw M5x16 for H35S	V6211
60460	Rotor (A3105 P2520) KG.1,80 Each for H35S	R8019	60422	Touch Pad Back Casing for H35S	S9236	19699	Screw M4x25 for H35S	V6231
78261	Rotor (A3109 P2521) Stator for H35S	R8021	77573	Hand Grip Arm Support for H35S	S9425	19700	Screw M6x16 for H35S	V6240
16973	Plate Wheel D.25x9.5 for H35S	R8520	77574	Hand Grip Support for H35S	S9434	77598	Stainless Steel Screw TCEI U5931 M6x20 for H35S	V6245X
77618	Washer U6592 4 Stainless Steel for H35S	R650515	79619	Sharpener Holder for H35S	S9449	37042	Screw TCEI U5931 M8x25 for H35S	V6254
77512	Washer 8,5x18x2 for H35S	R652215	77528	Ext.Knife Protect.Support for H35S	S9489	19704	Screw M10x16 for H35S	V6262
77513	Stainless Steel Washer U6592 12 for H35S	R654015	77620	Control Box for H35S	S100481	77530	Screw TCEI U5931 M10x30 for H35S	V6264
19680	Ball 3 17 for H35S	S3005	77621	Electr. Equipment Box for H35S	S100484	19706	Screw for H35S	V6278
17465	Ball 4.76 for H35S	S3015	60448	Support Plate for H35S	S880821	37050	Screw TC AUT.D7971 4.2x9 for H35S	V6285
77622	P.C.B. 230-50 C-H for H35S	S3221	19877	Rubber Cap for H35S	T1001	77599	Screw TC TC AUT.D7981 4,2x16 for H35S	V6292
77623	Scheda Elettrica 400-50 for H35S	S3223	36981	Rubber Cap for H35S	T1004	77629	Screw TBTC AUT.U6954 4,2x13 for H35S	V6296
77624	P.C. Board 230-50 H for H35S	S3227	19879	Label for H35S	T1603	77600	Screw TBTC AUT.U6954 3,9x32 for H35S	V6297
77625	P.C.B. 230-24V/50 GL for H35S	S3228	36985	Label Plate for H35S	T1617A	37058	Stainless Steel Screw M4x8 for H35S	V6370
77626	P.C.B. 230V/50HZ for H35S	S3269	19883	Label Oil for H35S	T1690	37059	Stainless Steel Screw M4x14 for H35S	V6371
77627	P.C.B. 24V C.C.GL for H35S	S3291	77628	Switch Overlay for H35S	T1760	77546	Screw TE U5737 M6x15 Stainless Steel for H35S	V6421X
36907	Index Arm for H35S	S3802	79279	Blade Cover Fastener for H35S	T5071	37067	Screw TE U5739 M5x20 for H35S	V6423
77542	Cylindrical Pin U1707 8x35 Stainless Steel for H35S	S7432	60456	H Motor Fastener for H35S	T5157	17497	Screw TSP U6109 M5x15 Stainless Steel for H35S	V7014X
36920	Pin 4x25 for H35S	S7526	42974	Tie Rod for H35S	T5191	17498	Screw TSPEI U5933 M4x10 for H35S	V7043
36924	Pin M.E.U6875 6x30 for H35S	S7546	79280	Knife Shaft Assembly for H35S	T8093	19713	Screw Sharpener for H35S	V7710
36926	Pin U7586 3x18 for H35S	S7557	60429	Meat Tray Support for H35S	T8544	37091	Screw H for H35S	V7730
77569	Pin U7586 6x30 for H35S	S7570	79282	Blade Support Shaft for H35S	T9699	17503	Screw M5x13 for H35S	V7908
17476	Foot Support Pin D.10 M8 L.37 for H35S	S7595	79283	Shaft Pin for H35S	T9742	19715	Screw Sharpener for H35S	V7910
77526	Pin Ø8x23 for H35S	S7608	60454	Fan INT90 for H35S	V4005	19717	Screw M6x50 for H35S	V7917
77570	Lock Pin for Carr. Plate Rotation for H35S	S7618	37013	Motor Fan MEC80 148x16 for H35S	V4014	19917	Screw BS for H35S	V7960

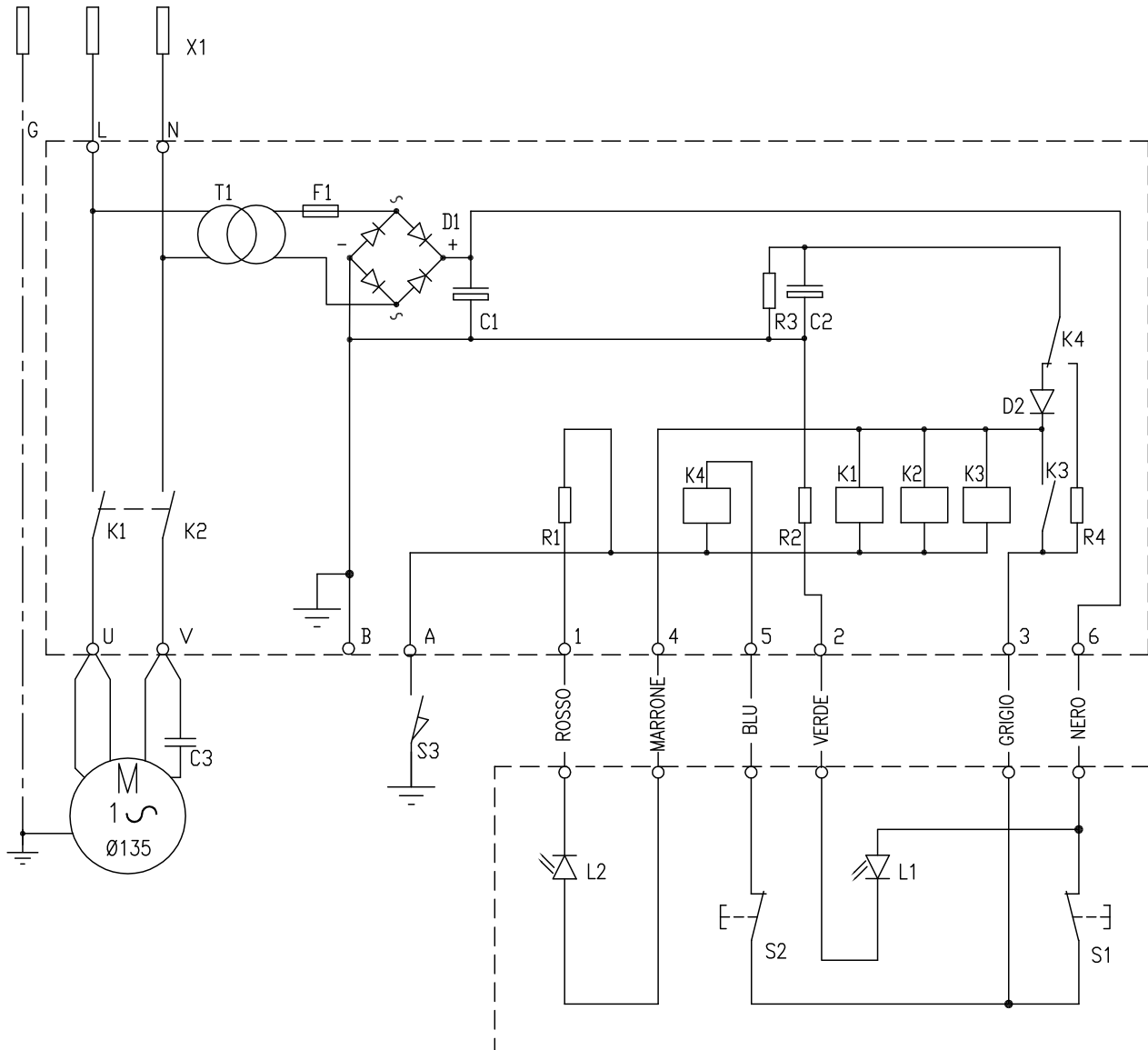
Parts Breakdown

Model MS-IT-0350-H 39631

Item No.	Description	Position	Item No.	Description	Position	Item No.	Description	Position
37095	Screw for Rod 6x13 for H35S	V7993A	77581	Special Screw M10x18 for H35S	V8103	77545	Stainless Steel Screw TCEI U5931 M8x45 for H35S	V633115
19724	Screw H for H35S	V8001	77582	Special Screw Ø8x15 for H35S	V8104	77630	Stainless Steel Screw TCEI U5931 M 4x12 for H35S	V634415
16987	Special Screw M6x15 for H35S	V8020	77532	Special Screw M8x40 for H35S	V8121	77578	Stainless Steel Screw TE U5739 M8x14 for H35S	V645715
37102	Screw M6x20 for H35S	V8035	60447	Meat Tray Slider Bottom Plate Screw for H35S	V8160	37077	Screw Tsp U6109 M4x6 INOX for H35S	V700615
19920	Screw M8x30 for H35S	V8036	60433	Meat Carriage Guard for H35S	V313006	37083	Locking Screw-Support H-C (CE) for H35S	V705016
37104	Threaded Stud for H35S	V8042	60428	Threaded Rod for H35S	V605315	37085	Screw 8x25 for H35S	V705616
77580	Stainless Steel Screw M8x16 for H35S	V8051	77515	Screw TC U6107 M4x25 INOX for H35S	V623115			
37113	Screw for Carr. Index M8x25 for H35S	V8099	77531	Screw TCEI U5931 M6x14 INOX for H35S	V628915			

Electrical Schematics

Model MS-IT-0350-H 39631



Position	Description	Position	Description	Position	Description
X1	Spina	C1	Capacitor 220uF	K1	Power Relay
T1	Transformer	C2	Capacitor 100uF	K2	Power Relay
F1	Fuse 500mA	C3	Capacitor 20uF	K3	Command Relay
D1	Straightener 1A	R1	Resistance 1k	K4	Command Relay
D2	Protective Diode	R2	Resistance 1k	S1	Stop Button
L1	LED Orange Line	R3	Resistance 10k	S2	Start Button
L2	LED Green March	R4	Resistance 47 Hom	S3	Blade Guard Disc Protection



Warranty Registration

Thank you for purchasing an Omcan product. To register your warranty for this product, complete the information below, tear off the card at the perforation and then send to the address specified below. You can also register online by visiting:

Merci d'avoir acheté un produit Omcan. Pour enregistrer votre garantie pour ce produit, complétez les informations ci-dessous, détachez la carte au niveau de la perforation, puis l'envoyer à l'adresse spécifiée ci-dessous. Vous pouvez également vous inscrire en ligne en visitant:

Gracias por comprar un producto Omcan usted. Para registrar su garantía para este producto, complete la información a continuación, cortar la tarjeta en la perforación y luego enviarlo a la dirección indicada a continuación. También puede registrarse en línea en:

www.omcan.com/warrantyregistration.html

For mailing in Canada

Pour postale au Canada

Por correo en Canadá

OMCAN

PRODUCT WARRANTY REGISTRATION

3115 Pepper Mill Court,

Mississauga, Ontario

Canada, L5L 4X5

For mailing in the US

Pour diffusion aux États-Unis

Por correo en los EE.UU.

OMCAN

PRODUCT WARRANTY REGISTRATION

4450 Witmer Industrial Estates, Unit 4,

Niagara Falls, New York

USA, 14305

or email to: service@omcan.com



Purchaser's Information

Name: _____

Company Name: _____

Address: _____

Telephone: _____

City: _____ Province or State: _____ Postal or Zip: _____

Email Address: _____

Country: _____

Type of Company:

Restaurant Bakery Deli

Butcher Supermarket Caterer

Institution (*specify*): _____

Other (*specify*): _____

Dealer from which Purchased: _____

Dealer City: _____ Dealer Province or State: _____

Invoice: _____

Model Name: _____ Model Number: _____

Serial Number: _____

Machine Description: _____

Date of Purchase (MM/DD/YYYY): _____

Date of Installation (MM/DD/YYYY): _____

Would you like to extend the warranty? Yes No

Thank you for choosing Omcan | Merci d'avoir choisi Omcan | Gracias por elegir Omcan



Since 1951 Omcan has grown to become a leading distributor of equipment and supplies to the North American food service industry. Our success over these many years can be attributed to our commitment to strengthen and develop new and existing relationships with our valued customers and manufacturers. Today with partners in North America, Europe, Asia and South America, we continually work to improve and grow the company. We strive to offer customers exceptional value through our qualified local sales and service representatives who provide convenient access to over 3,500 globally sourced products.

Depuis 1951 Omcan a grandi pour devenir un des “leaders” de la distribution des équipements et matériel pour l’industrie des services alimentaires en Amérique du Nord. Notre succès au cours de ces nombreuses années peut être attribué à notre engagement à renforcer et à développer de nouvelles et existantes relations avec nos clients et les fabricants de valeur. Aujourd’hui avec des partenaires en Amérique du Nord, Europe, Asie et Amérique du Sud, nous travaillons continuellement à améliorer et développer l’entreprise. Nous nous efforçons d’offrir à nos clients une valeur exceptionnelle grâce à nos ventes locales qualifiées et des représentants de service qui offrent un accès facile à plus de 3500 produits provenant du monde entier.

Desde 1951 Omcan ha crecido hasta convertirse en un líder en la distribución de equipos y suministros de alimentos en América del Norte industria de servicios. Nuestro éxito en estos años se puede atribuir a nuestro compromiso de fortalecer y desarrollar nuevas relaciones existentes con nuestros valiosos clientes y fabricantes. Hoy con socios de América del Norte, Europa, Asia y América del Sur, que trabajan continuamente para mejorar y crecer la empresa. Nos esforzamos por ofrecer a nuestros clientes valor excepcional a través de nuestro local de ventas y representantes de los servicios que proporcionan un fácil acceso a más de 3,500 productos con origen a nivel mundial.

