



13" Meat Slicer
Model MS-IT-0330-A
Item 13645
Instruction Manual



STOP
DO NOT RETURN
THIS PRODUCT TO THE STORE

For questions or assistance with this product call OMCAN Toll Free:
1 800 465 0234
Customer Service
or
visit the Support section of
www.omcan.com

Revised - 03/01/2017



Toll Free: 1-800-465-0234
Fax: 905-607-0234
Email: service@omcan.com
www.omcan.com

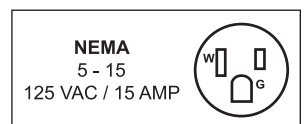


Table of Contents

Model MS-IT-0330-A

Section	Page
General Information -----	3 - 4
Safety and Warranty -----	4 - 5
Technical Specifications -----	6
Installation -----	6
Operation -----	7
Maintenance -----	8 - 9
Parts Breakdown -----	10 - 23
Electrical Schematics -----	24
Notes -----	25 - 26
Warranty Registration -----	27



General Information

Omcan Manufacturing and Distributing Company Inc., Food Machinery of America, Inc. dba Omcan and Omcan Inc. are not responsible for any harm or injury caused due to any person's improper or negligent use of this equipment. The product shall only be operated by someone over the age of 18, of sound mind, and not under the influence of any drugs or alcohol, who has been trained in the correct operation of this machine, and is wearing authorized, proper safety clothing. Any modification to the machine voids any warranty, and may cause harm to individuals using the machine or in the vicinity of the machine while in operation.

CHECK PACKAGE UPON ARRIVAL

Upon receipt of an Omcan shipment please inspect for external damage. If no damage is evident on the external packaging, open carton to ensure all ordered items are within the box, and there is no concealed damage to the machine. If the package has suffered rough handling, bumps or damage (visible or concealed), please note it on the bill of lading before accepting the delivery and contact Omcan within 24 hours, so we may initiate a claim with the carrier. A detailed report on the extent of the damage caused to the machine must be filled out within three days, from the delivery date shown in the shipping documents. Omcan has no recourse for damaged products that were shipped collect or third party.

Before operating any equipment, always read and familiarize yourself with all operation and safety instructions.

Omcan would like to thank you for purchasing this machine. It's of the utmost importance to save these instructions for future reference. Also save the original box and packaging for shipping the equipment if servicing or returning of the machine is required.

Omcan Fabrication et distribution Compañie Limité et Food Machinery d'Amerique, dba Omcan et Omcan Inc. ne sont pas responsables de tout dommage ou blessure causé du fait que toute personne ait utilisé cet équipement de façon irrégulière. Le produit ne doit être exploité que par quelqu'un de plus de 18 ans, saine d'esprit, et pas sous l'influence d'une drogue ou d'acohol, qui a été formé pour utiliser cette machine correctement, et est vêtu de vêtements de sécurité approprié. Toute modification de la machine annule toute garantie, et peut causer un préjudice à des personnes utilisant la machine ou des personnes à proximité de la machine pendant son fonctionnement.

VÉRIFIEZ LE COLIS DÈS RÉCEPTION

Dès réception d'une expédition d'Omcan veuillez inspecter pour dommages externes. Si aucun dommage n'est visible sur l'emballage externe, ouvrez le carton afin de s'assurer que tous les éléments commandés sont dans la boîte, et il n'y a aucun dommage dissimulé à la machine. Si le colis n'a subi aucune mauvaises manipulations, de bosses ou de dommages (visible ou cachée), notez-le sur le bond de livraison avant d'accepter la livraison et contactez Omcan dans les 24 heures qui suivent, pour que nous puissions engager une réclamation auprès du transporteur. Un rapport détaillé sur l'étendue des dommages causés à la machine doit être rempli dans un délai de trois jours, à compter de la date de livraison indiquée dans les documents d'expédition. Omcan n'a aucun droit de recours pour les produits endommagés qui ont été expédiées ou cueilli par un tiers transporteur.

General Information

Avant d'utiliser n'importe quel équipement, toujours lire et vous familiariser avec toutes les opérations et les consignes de sécurité.

Omcan voudrais vous remercier d'avoir choisi cette machine. Il est primordial de conserver ces instructions pour une référence ultérieure. Également conservez la boîte originale et l'emballage pour l'expédition de l'équipement si l'entretien ou le retour de la machine est nécessaire.

Omcan Empresa De Fabricacion Y Distribucion Inc. Y Maquinaria De Alimentos De America, Inc. dba Omcan y Omcan Inc. no son responsables de ningun daño o perjuicio causado por cualquier persona inadecuada o el uso descuidado de este equipo. El producto solo podra ser operado por una persona mayor de 18 años, en su sano juicio y no bajo alguna influencia de droga o alcohol, y que este ha sido entrenado en el correcto funcionamiento de esta máquina, y ésta usando ropa apropiada y autorizada. Cualquier modificación a la máquina anula la garantía y puede causar daños a las personas usando la máquina mientras esta en el funcionamiento.

REVISE EL PAQUETE A SU LLEGADA

Tras la recepcion de un envio Omcan favor inspeccionar daños externos. Si no hay daños evidentes en el empaque exterior, Habra el carton para asegurarse que todos los articulos solicitados estén dentro de la caja y no encuentre daños ocultos en la máquina. Si el paquete ha sufrido un manejo de poco cuidado, golpes o daños (visible o oculto) por favor anote en la factura antes de aceptar la entrega y contacte Omcan dentro de las 24 horas, de modo que podamos iniciar una reclamación con la compañía. Un informe detallado sobre los daños causados a la máquina debe ser llenado en el plazo de tres días, desde la fecha de entrega que se muestra en los documentos de envío. Omcan no tiene ningun recurso por productos dañados que se enviaron a recoger por terceros.

Antes de utilizar cualquier equipo, siempre leer y familiarizarse con todas las instrucciones de operación y seguridad.

Omcan quisiera darles las gracias por la compra de esta máquina. Es de la máxima importancia para guardar estas instrucciones para referencias en el futuro. También guarde la caja original y el embalaje para envío del equipo si el mantenimiento o la devolución de la máquina es necesaria.

Safety and Warranty

GENERAL SAFETY REGULATIONS

The slicer must be used only by suitably trained personnel. Furthermore, this personnel must have read this manual carefully. In particular, please comply to the following instructions:

- **Install the machine according to the instructions contained in the "Installation" section.**
- **Do not remove the transparent protections, and do not modify nor exclude the mechanical and electrical**

Safety and Warranty

safety devices.

- Do not use the machine with improvised connections, or provisional or non insulated cables.
- Check the power cable and gland plate on the machine body regularly and, when necessary, have them replaced by qualified personnel.
- In case of anomalies, defective operation, incorrect movement, and/or unusual noise, stop the machine immediately.
- Before cleaning or servicing, disconnect the machine from the mains.
- Always use protection gloves during cleaning or maintenance.
- Lay or remove the goods to be sliced on the sliding plate only when the latter is completely pushed back and the thickness control knob positioned to 0.
- To move the carriage tray when slicing, use the handle or the product grip handle.
- For extraordinary maintenance (to replace the sharpener wheels, the blade, etc), please contact the manufacturer or qualified and duly authorized personnel.
- Avoid running the slicers with no product on it.
- The slicers are equipped with a ventilated motor. Extended continual use is not recommended. Let the motor cool down after 30 minutes of use.

1 YEAR PARTS AND LABOR BENCH WARRANTY

Within the warranty period, contact Omcan Inc. at 1-800-465-0234 to schedule a drop off to either an Omcan authorized service depot in the area, or to an Omcan Service warehouse to repair the equipment.

Unauthorized maintenance will void the warranty. Warranty covers electrical and part failures, not improper use.

Please see www.omcan.com/warranty.html for complete info.


WARNING:

The packaging components are classified as normal solid urban waste and can therefore be disposed of without difficulty.

In any case, for suitable recycling, we suggest disposing of the products separately (differentiated waste) according to the current norms.

DO NOT DISCARD ANY PACKAGING MATERIALS IN THE ENVIRONMENT!

Technical Specifications

Model	MS-IT-0330-A
Blade Size	13" / 330 mm
Power	2 x 0.50 HP / 0.37 kW
Cheese Slicing*	
Slicing Volume*	8 hours or more
RPM	250
Cutting Size	9.25" x 10.62" / 235 x 270 mm
Electrical	110V / 60 Hz / 1 Ph
Weight	140 lbs. / 64 kg.
Dimensions (WDH)	29" x 24" x 24" / 737 x 610 x 610 mm
Item Number	13645

*Results may vary due to product consistency and temperature

Installation

UNPACKING

Immediately on delivery unloading, please check whether machine packaging is eventually deteriorated and, in this case, make necessary reservations on signing the delivery note. Check the machine inside packaging and contact the carrier immediately if it is damaged.

Prior to installation, test the electrical service to assure that it is in compliance with the specifications on the machine data plate.

ELECTRICAL

WARNING: It must be connected to properly grounding plug, grounded outlet. If the receptacle is not the proper grounding type, contact an electrician.

SAFETY

Safety devices incorporated in this slicer must be in their correct operating position every time the slicer is in use.

- The blade cover must be in position over the knife and secured by tightening the hand knob.
- The last slice device must be used when slicing. It keeps your hands away from the knife.
- When the slicer is not working, the slicer thickness control must be set to zero (fully clockwise) to prevent the blade edge from being exposed.
- Always unplug the power cord before cleaning or moving the slicer.

MANUAL OPERATION

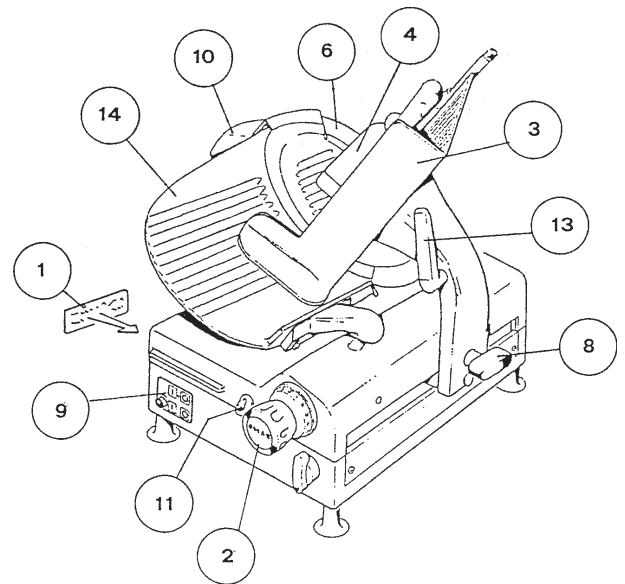
- Rotate the AUTO/MANUAL selector carriage release handle by 180° (clockwise).
- Push the on-switch/blade start push button.
- Adjust the thickness you want by turning the slice thickness control knob.
- Actuate the carriage by your hand.
- Push the off-switch/blade stop push button.

AUTOMATIC OPERATION

- Rotate the AUTO/MANUAL selector carriage release handle by 180° (counterclockwise).
- Push the on-switch/blade start push button.
- Adjust the thickness you want by turning the slice thickness control knob.
- Push the product holder start push button.
- Adjust the length of the stroke by turning the product holder stroke adjustment.
- Push the product holder stop push button to end.

SLICING

- Pull the product holder (3) towards you until it stops and place the product to be sliced on the product holder tray.
- Place the last slice device against the product and start the slicer by pressing the on-off switch (9).
- Adjust the slice thickness by turning the slice thickness control. The numbers on the slice thickness control do not indicate precise measurement, but may be used for reference to duplicate slice thickness.
- Using either the carriage handle (13) or last slice device (4), push the product holder (3) back and forth to slice. Always switch-off the slicer and turn the slice thickness control clockwise to zero when not slicing.



WARNING: Slicer should not be operated by untrained personnel or persons under 18 years of age.

WEAR ADJUSTMENT

After several years of operation and sharpening of the blade, it may become necessary to have the slice thickness plate adjusted closer to the blade.

Maintenance

ELECTRICAL SAFETY

When the slicer is running, removing the blade cover eventually or electric power causes the stop of the machine. To restart the slicer, press the on-off switch.

LUBRICATION

- The rod on which the product holder slides, which is underneath the slicer, should be lubricated weekly with several drops of oil.
- Stop the carriage at the end of the stroke nearest the operator position and pour the lubricant into the special oiler. DO NOT use vegetable oil.
- Occasionally, the slice thickness plate slide rod should be coated lightly with lubricant. Turn the slice thickness control fully counterclockwise when lubricating this slide rod and then turn it fully clockwise when finished.
- DO NOT lubricate the rod on which the last slice device slides. It must be kept clean but not lubricated.
- The motor has sealed bearings and requires no lubrication maintenance.

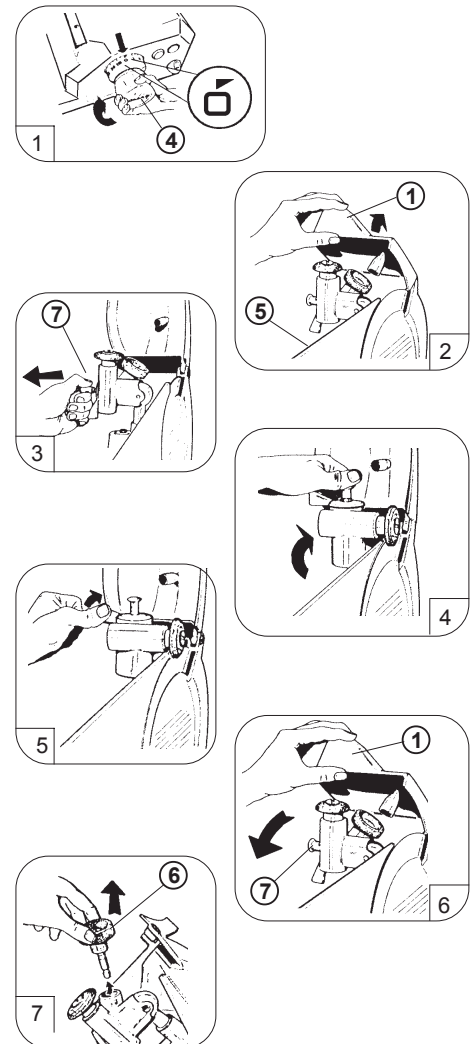
SHARPENING OPERATION

Your slicer blade will provide long service in normal deli, food store, or commercial kitchen use. However, in high volume applications where it is a practice to sharpen the blade frequently or even daily, the blade will be expended in a shorter time.

Before using the sharpener, be sure the front and back side of the knife edge is clean and free of grease.

To sharpen knife:

- a) Be sure that the slicer has been switched off.
 - b) Rotate the slice thickness control (4) into "O" position, so that the thickness plate (5) protects the knife. (See Fig. 2)
- Lift up the sharpener cover. (1) (See Fig. 2)
 - Disengage the pin (7) and rotate the sharpener. (See Fig. 3)
 - The sharpener, then, goes into its sharpening position. (See Fig. 4)
 - To sharpen, first turn the switch on so that when the knife turns, it will slowly rotate the lever which lets both stones go in contact with the knife. Sharpening and trimming are made in same time. (See Fig. 5)
 - Replace the sharpener to normal horizontal position by lifting the pin (7) and close the cover. (See Fig. 6)
 - The grinding stone (6), fitted on its pin, can be easily removed by just drawing it. (See Fig. 7)
 - To get a nice sharpening, the grinding stone must be clean and free of grease.
 - The sharpening time depends on the wear of the knife. To get a good



Maintenance

result, the time needed is 10 to 15 seconds. A longer sharpening reduces the duration of the knife and gives no advantage.

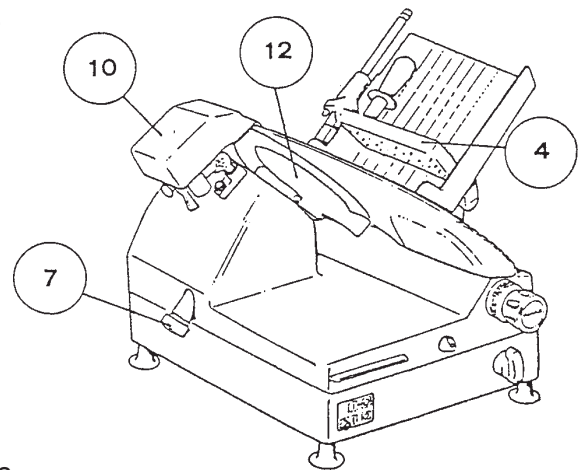
- Wipe the slicer with a clean damp cloth to remove any grinding particles.

CLEANING THE SLICER

This machine must be thoroughly cleaned and sanitized after installation and before being put into service. It should also be cleaned after each day's operation or every time it will not be used for an extended period.

WARNING: Unplug machine power cord and turn the index knob fully clockwise before cleaning the slicer.

- Remove the slice deflector (12) by removing its thumb screw.
- The product holder can be removed for an easy cleaning by unfastening its handle (8).
- Using a mild soap and hot water solution and a clean cloth, wipe all surfaces of the slicer.
- Thoroughly rinse it with another clean cloth and fresh water.
- Remove the blade cover by removing the hand knob (7).
- With the hand knob removed, grasp the edge of the blade cover and carefully lift it straight off the knife.



WARNING: The slicer blade is very sharp. Use extreme caution when working near the blade.

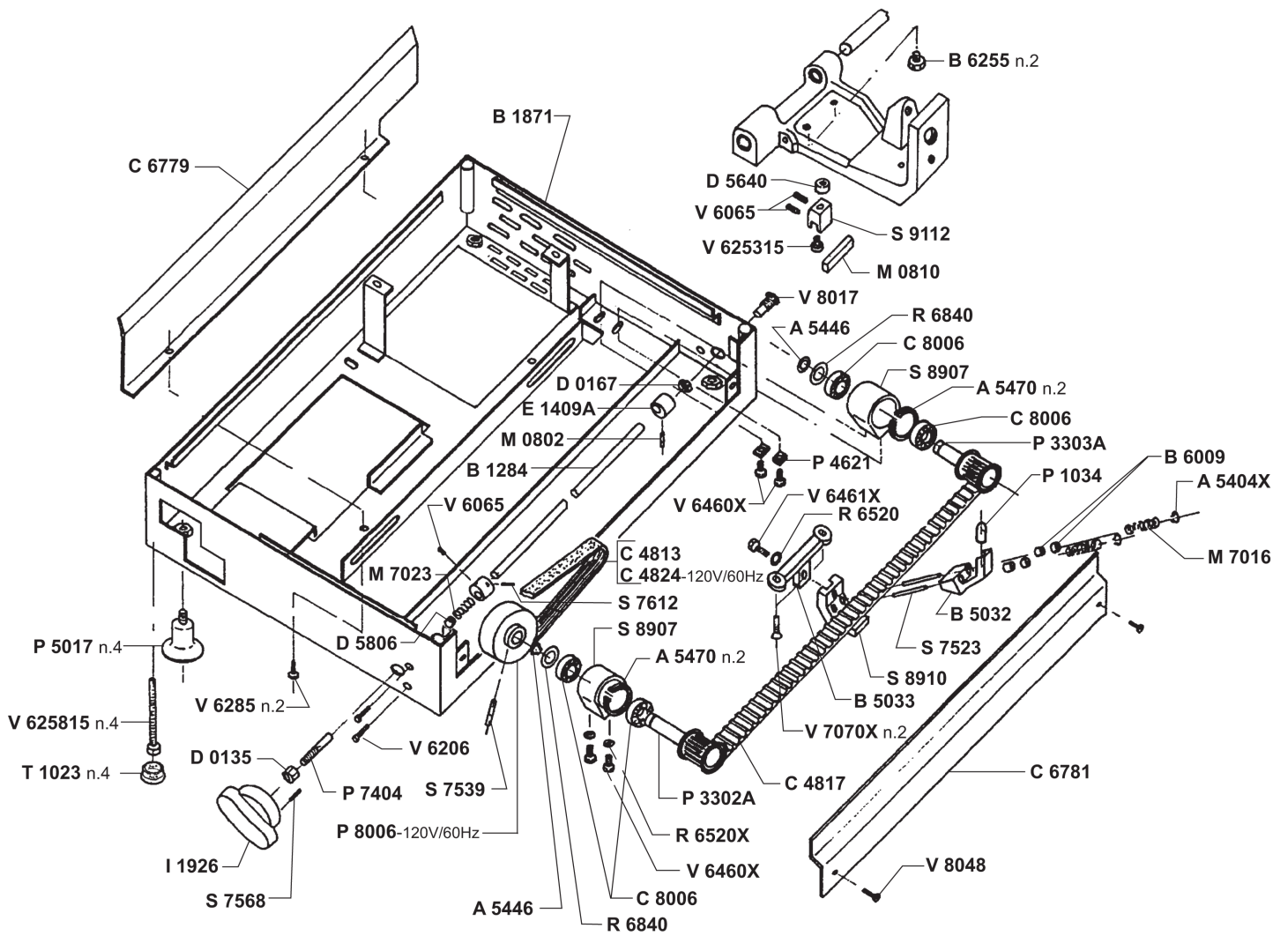
- Carefully wash both sides of the blade with the slice thickness control turned fully clockwise. Wash the blade by wiping outward from the center.
- Always rinse the blade thoroughly using fresh water and a clean cloth. Never use steel pads to clean the blade.
- Wash and thoroughly rinse the removed components prior to reassembling them.
- Do not wash any slicer components in a dishwasher.

REFERENCE

Item Number	Model Number	Description	Manufacturer Model Number
13645	MS-IT-0330-A	Meat Slicer Gear Driven Automatic 13" / 330mm Blade 1 HP / 746 W 110V/60/1 NSF cETLus	CX MATIC

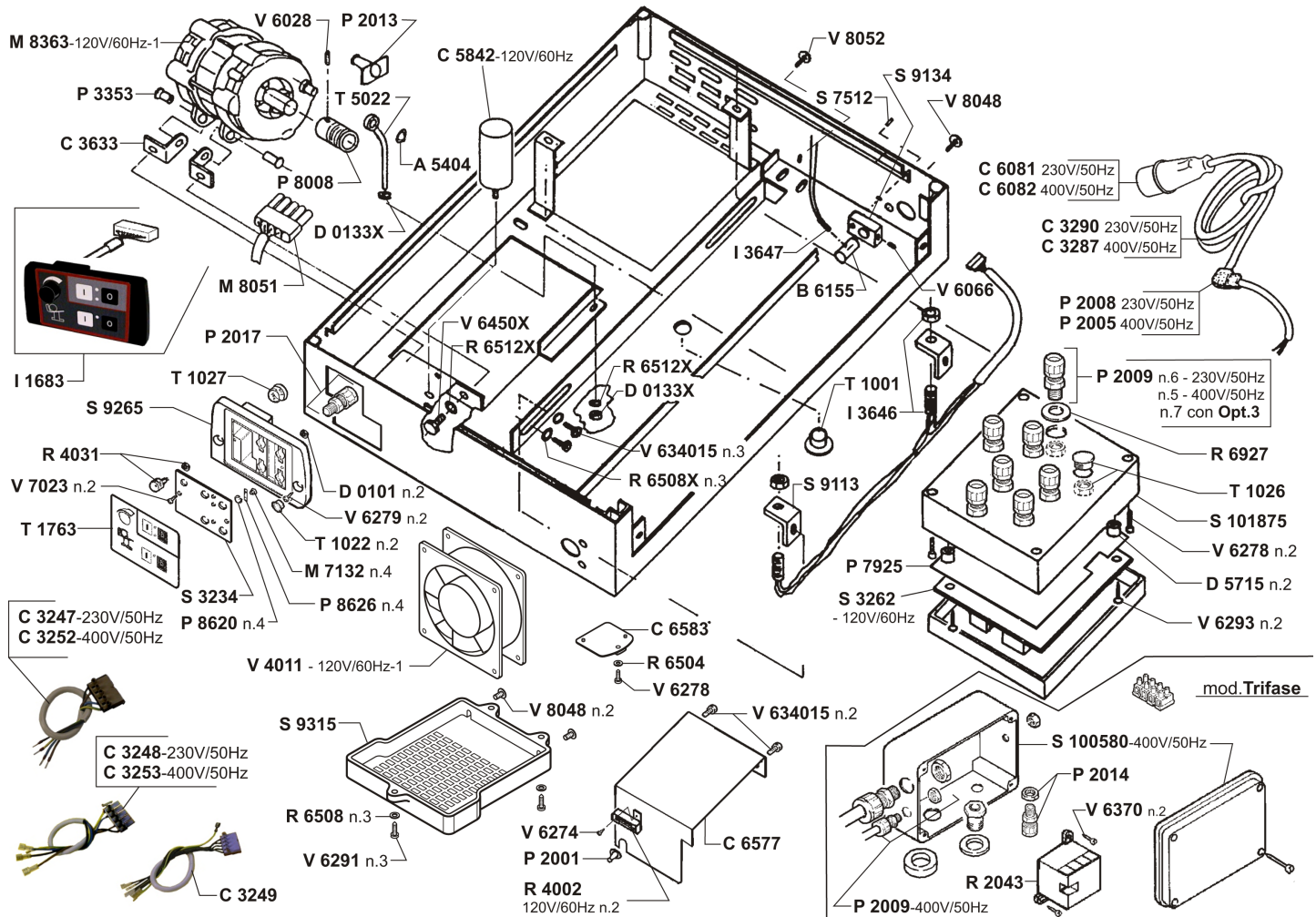
Parts Breakdown

Model MS-IT-0330-A 13645



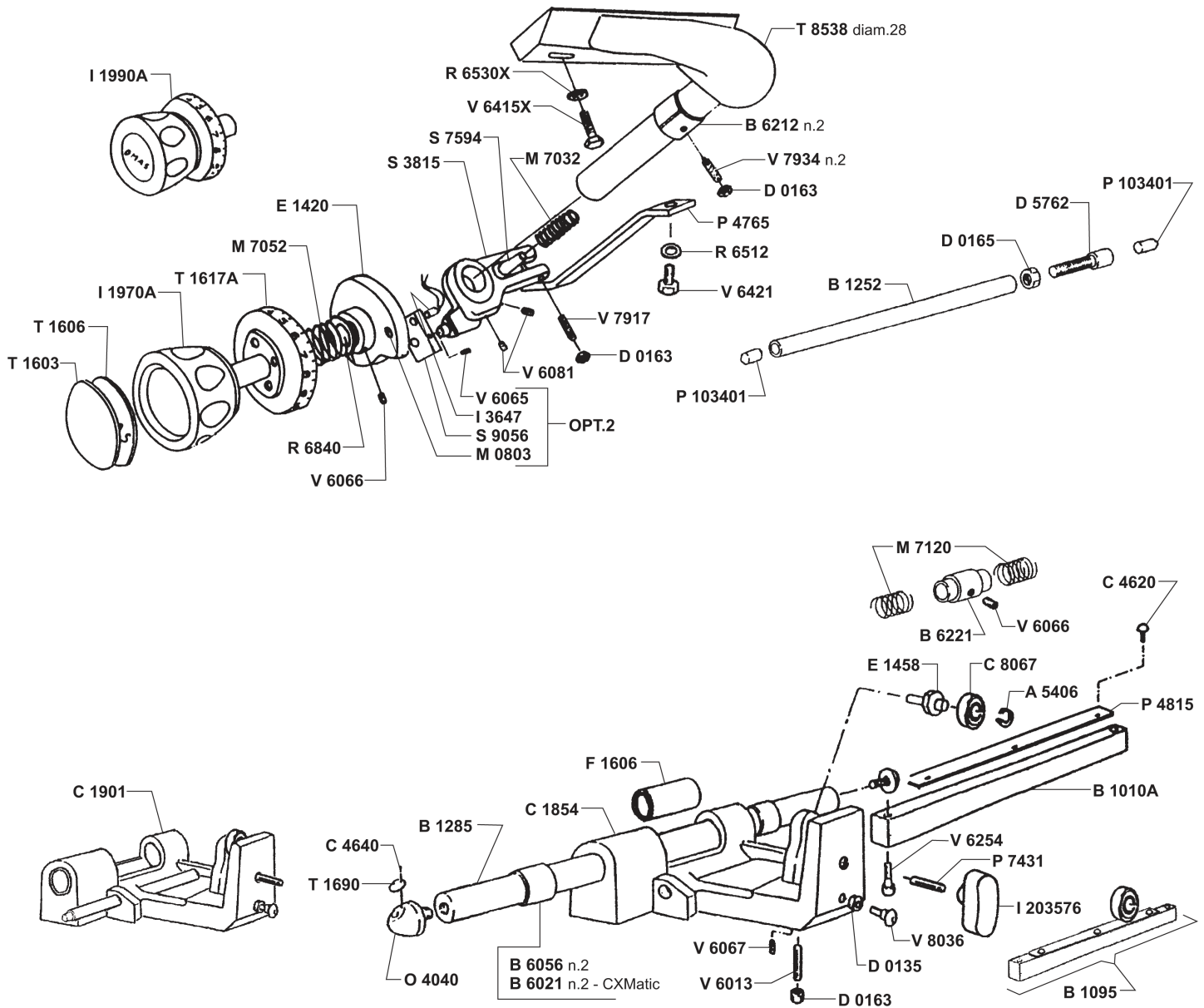
Parts Breakdown

Model MS-IT-0330-A 13645



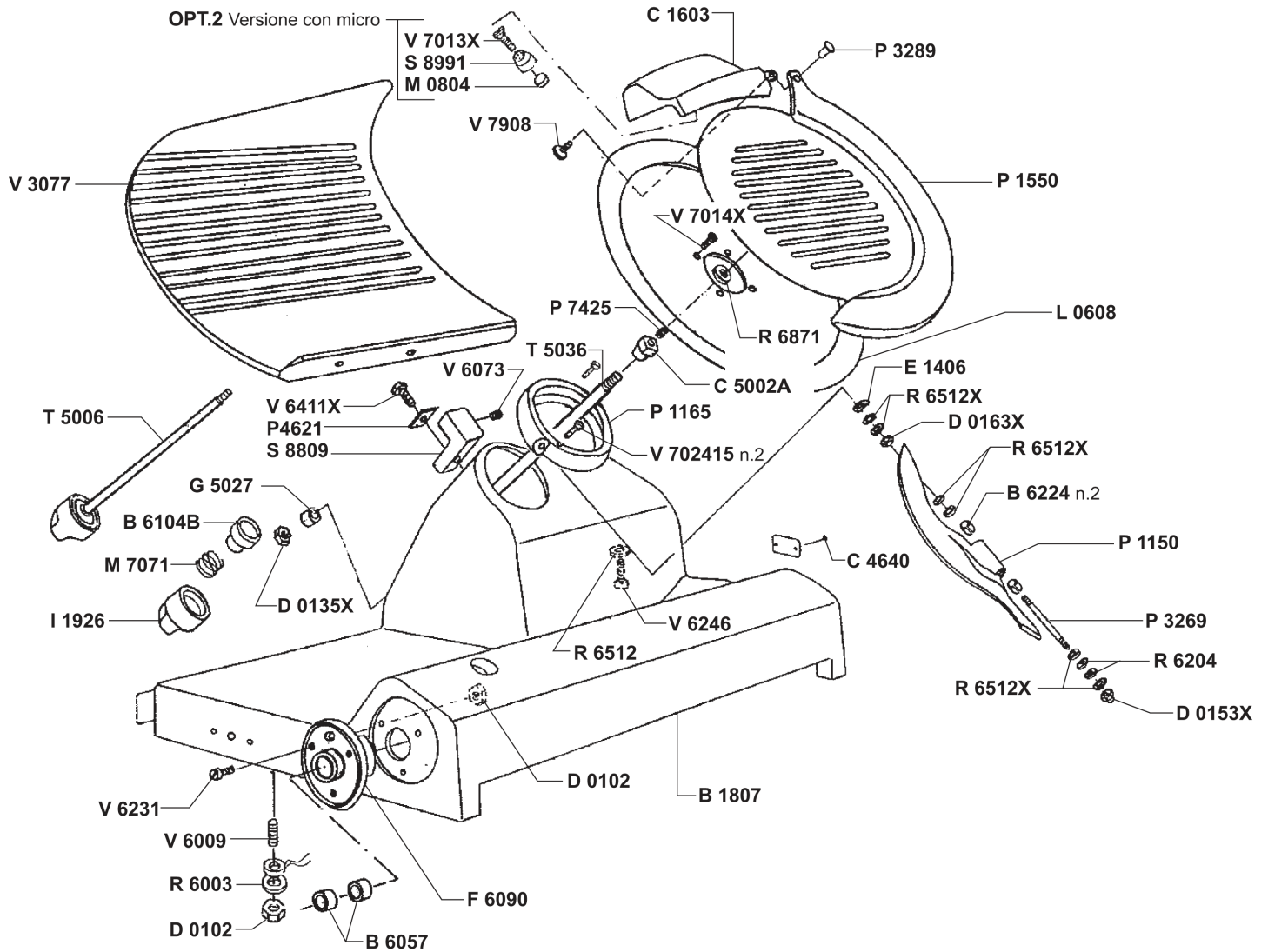
Parts Breakdown

Model MS-IT-0330-A 13645



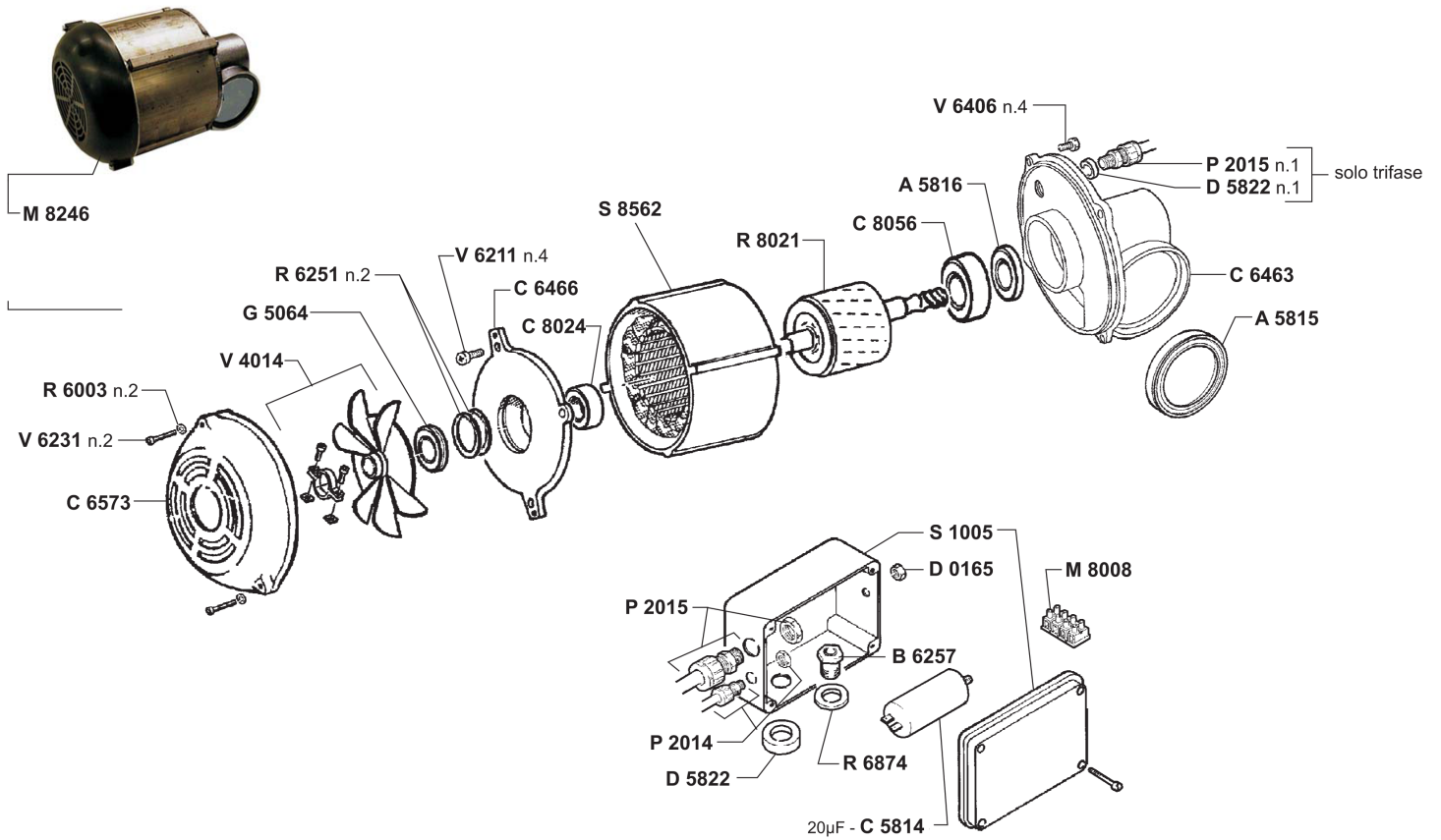
Parts Breakdown

Model MS-IT-0330-A 13645



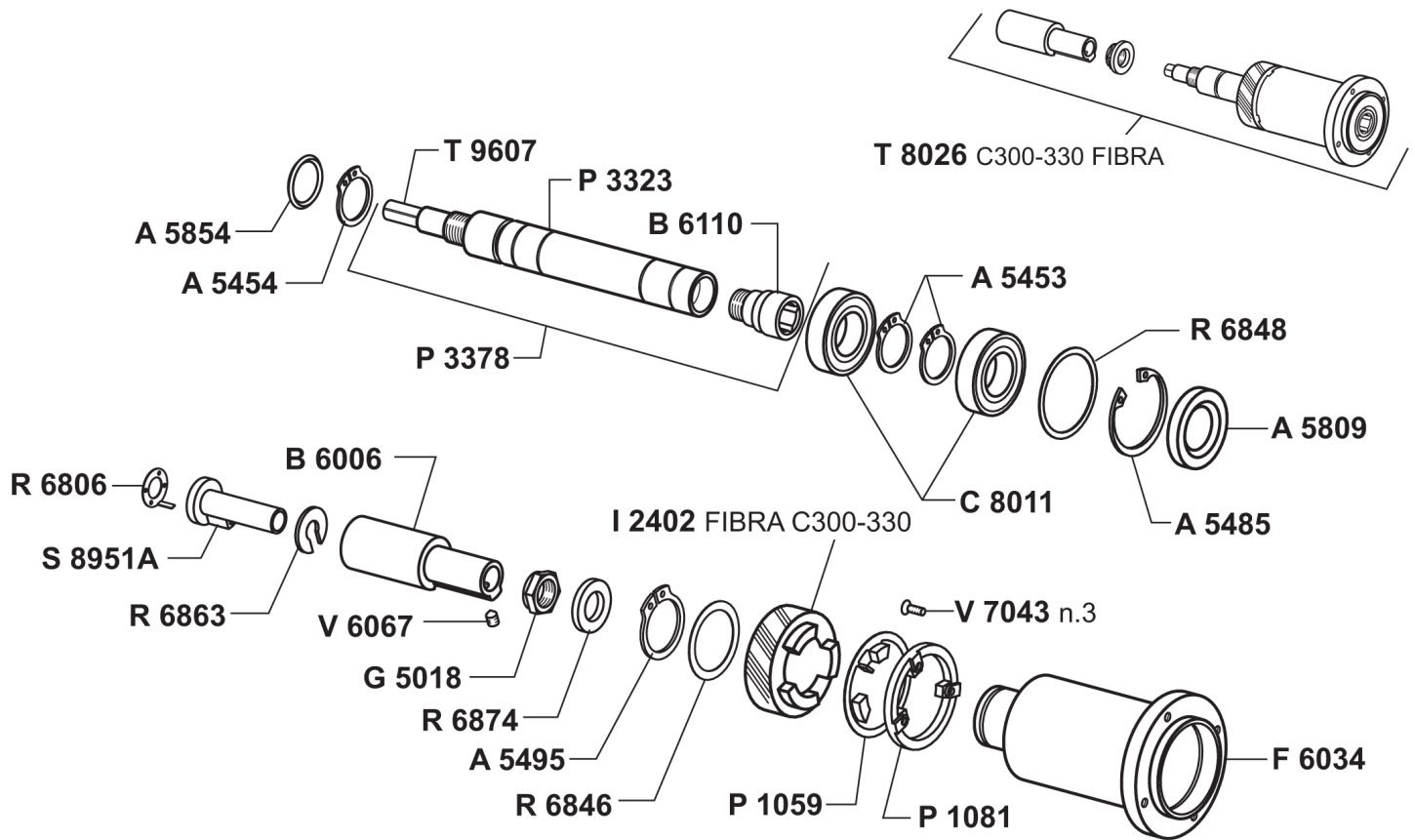
Parts Breakdown

Model MS-IT-0330-A 13645



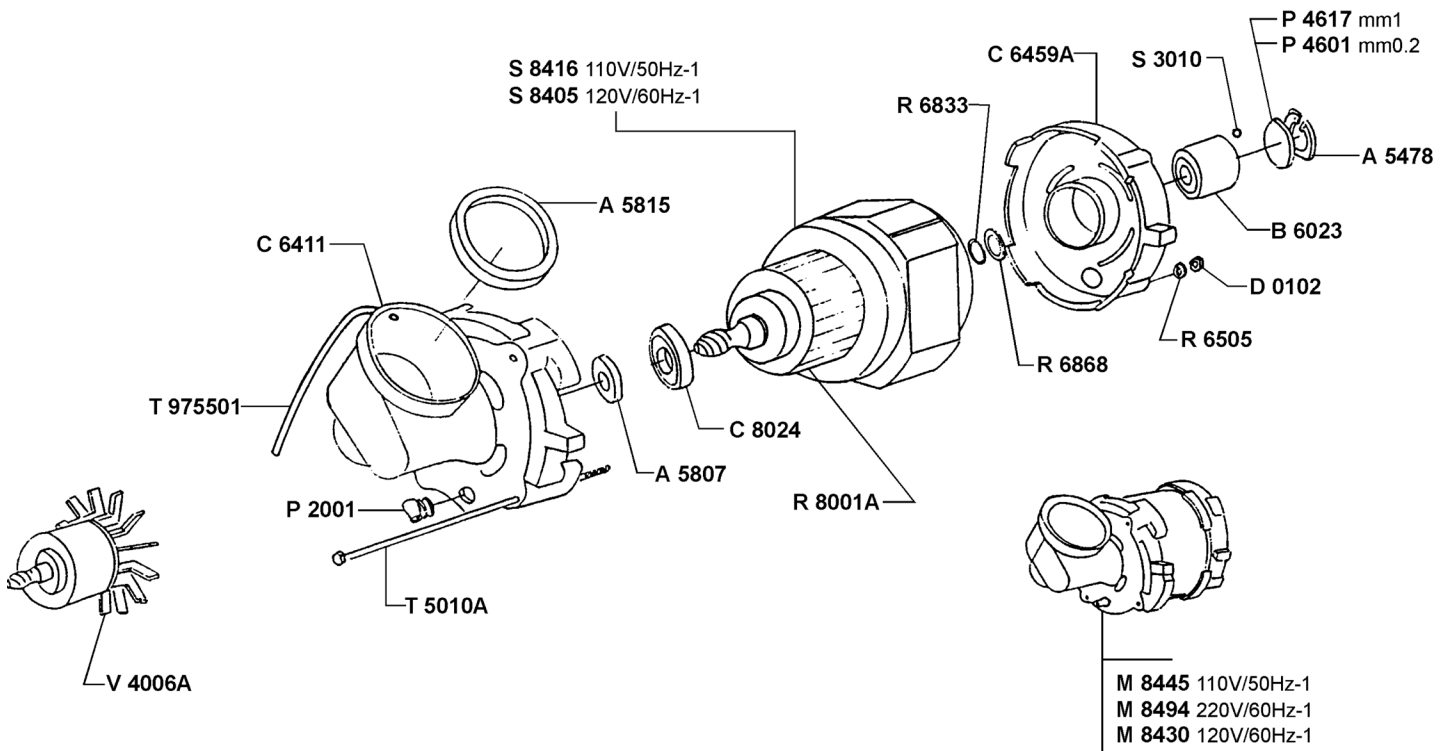
Parts Breakdown

Model MS-IT-0330-A 13645



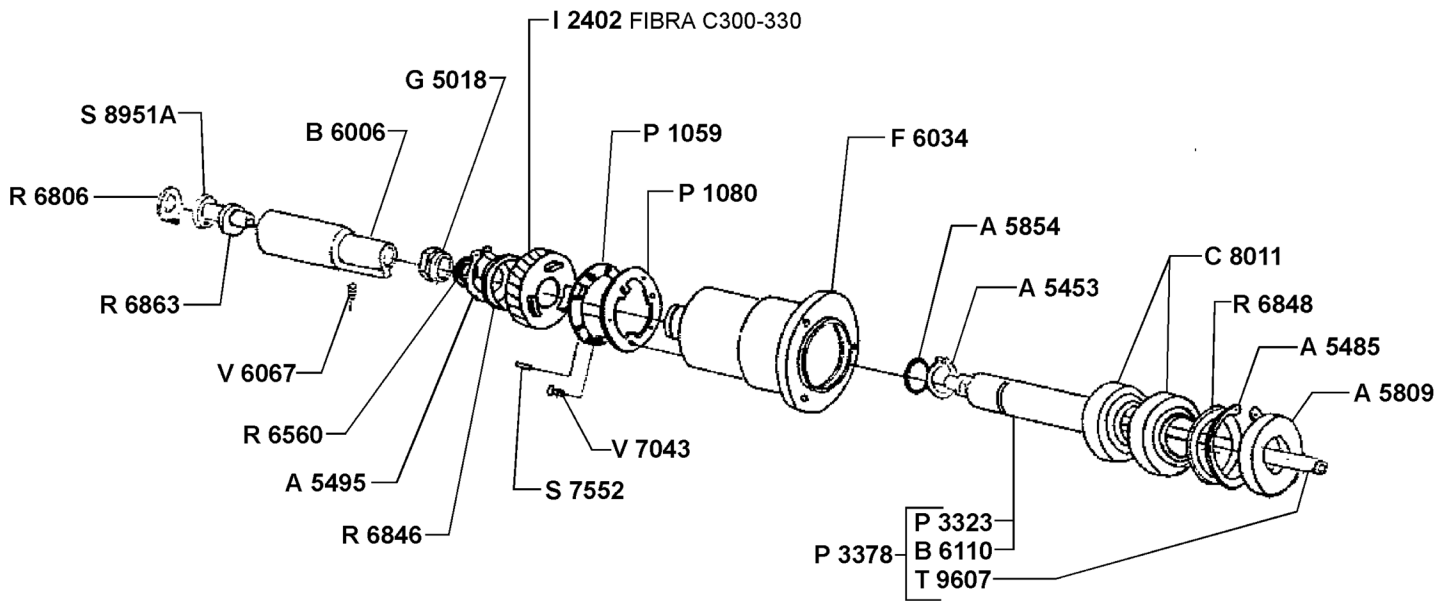
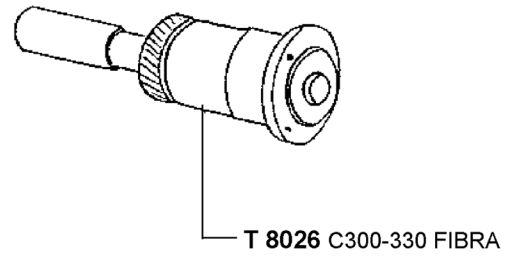
Parts Breakdown

Model MS-IT-0330-A 13645



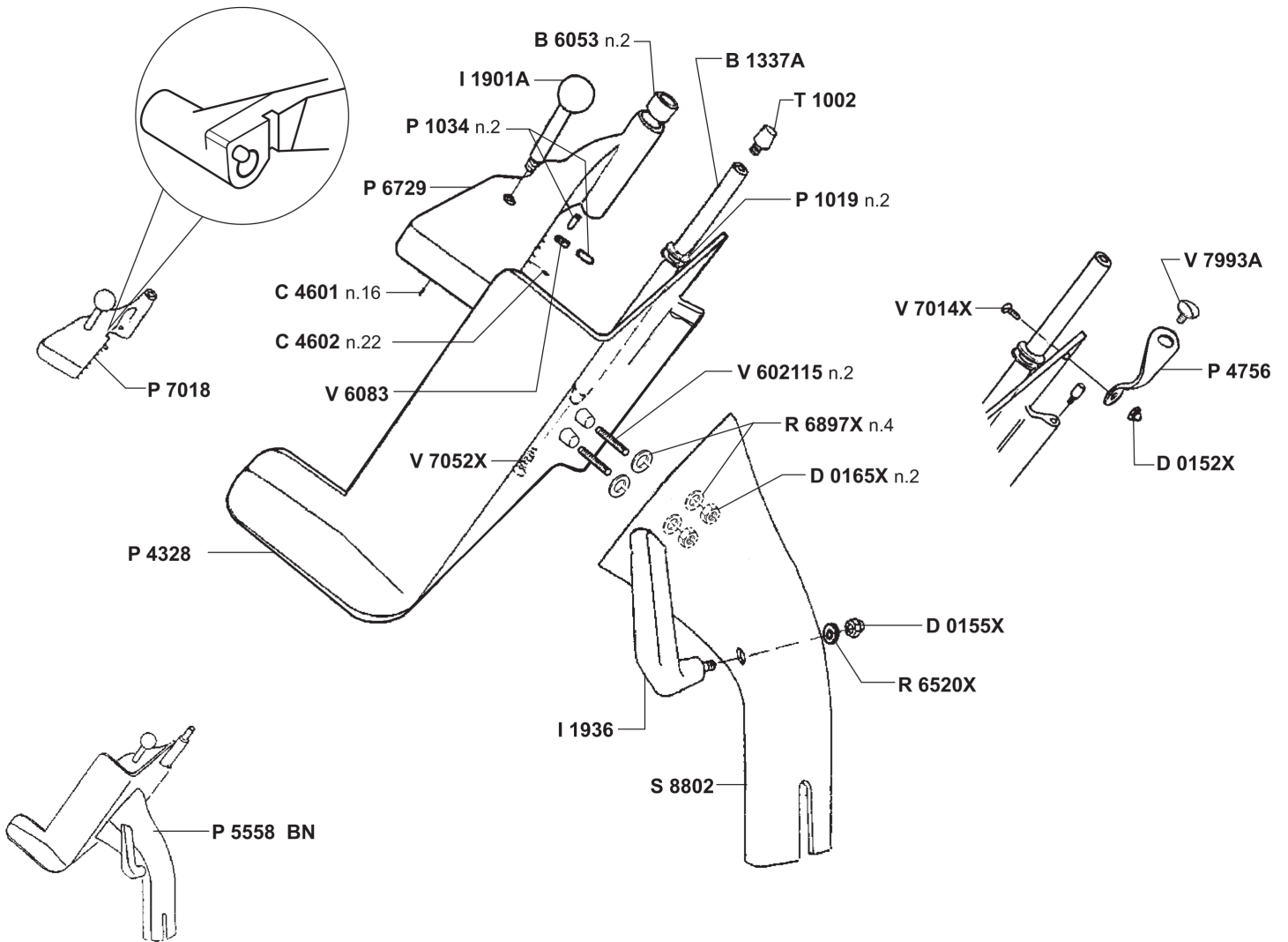
Parts Breakdown

Model MS-IT-0330-A 13645



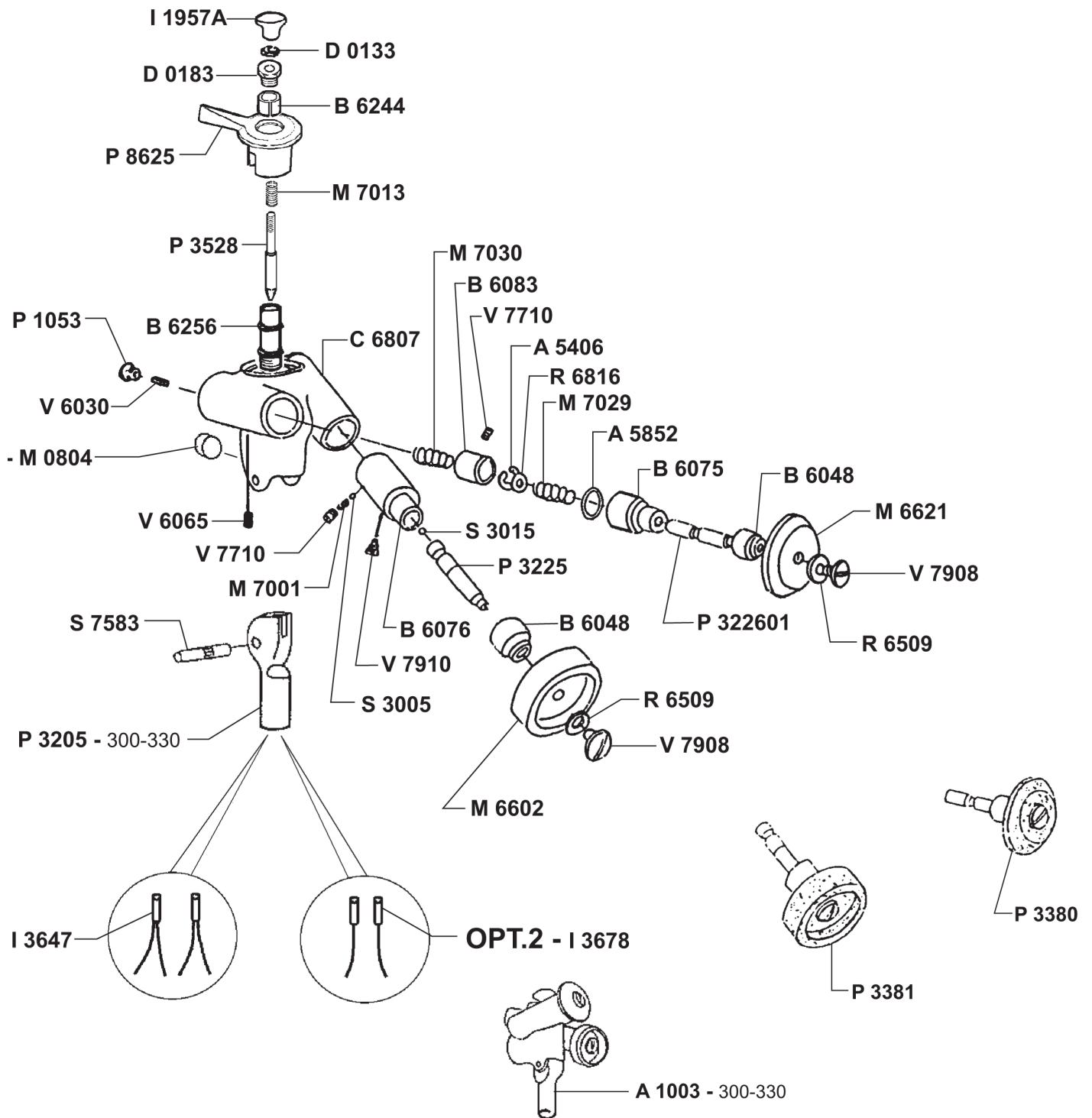
Parts Breakdown

Model MS-IT-0330-A 13645



Parts Breakdown

Model MS-IT-0330-A 13645



Parts Breakdown

Model MS-IT-0330-A 13645

Item No.	Description	Position	Item No.	Description	Position	Item No.	Description	Position
17272	Sharpening Assembly (Support and Stones) for CXMATIC	A1003	16905	Bushing DU 16x18x15 for CXMATIC	B6053	36602	Driving Belt 330x10 for CXMATIC	C4813
17280	Ring EL Benzing 5 for CXMATIC	A5404	17304	Bushing for CXMATIC	B6056	36604	Belt D.420 L100 for CXMATIC	C4817
36536	Stainless Steel Ring EL. Benzing 6 for CXMATIC	A5404X	17305	Bushing DU 18x20x15 for CXMATIC	B6057	36605	Belt V.360x10 for CXMATIC	C4824
16902	Ring EL. Benzing 8 for CXMATIC	A5406	16906	Bush Sharpening H-L-C for CXMATIC	B6075	36606	Bolt H-L-C for CXMATIC	C5002A
19606	Ring 17 for CXMATIC	A5446	16907	Bush Sharpening H-L-C for CXMATIC	B6076	36609	Capacitor 20 µF 250V for CXMATIC	C5814
77584	Ring EL. Seeger EST.25 (OMAS) for CXMATIC	A5453	17307	Bushing Sharpener H-L-C for CXMATIC	B6083	36610	Capacitor 50 MF 250V for CXMATIC	C5842
77585	Ring EL. Seeger EST.25 Ser.Heavy (OMAS) for CXMATIC	A5454	19630	Bushing Fastener HBC for CXMATIC	B6104B	77609	Connettore Spina Monofase 2x16A CEE (OMAS) for CXMATIC	C6081
36541	Ring EL. Seeger INT.35 for CXMATIC	A5470	78265	Bushing, Funnel H-L-C for CXMATIC	B6110	78286	Three-Phase Connector 3x16A for CXMATIC	C6082
78251	Ring EL. Seeger INT 45 for CXMATIC	A5478	78265	Knife Shaft for CXMATIC	B6110	78240	Front Motor Cover for CXMATIC	C6411
19484	Ring 52 for CXMATIC	A5485	36559	Bushing Support Switch for CXMATIC	B6155	78247	Back Motor Cover C for CXMATIC	C6459A
19612	Ring 33 for CXMATIC	A5495	18648	Bushing for CXMATIC	B6212	78266	Motor for CXMATIC	C6463
17282	Oil Seal 20x42x7 for CXMATIC	A5807	36566	Bushing To Hold Carriage Springs for CXMATIC	B6221	36615	Back Motor Cover for CXMATIC	C6466
17283	Oil Seal 25x52x10 for CXMATIC	A5809	36568	DU Bushing 6x8x6 for CXMATIC	B6224	36617	Motor Fan Cover for CXMATIC	C6573
17285	Oil Seal 60x75x8 for CXMATIC	A5815	36865	Sharpener Operating Handle for CXMATIC	B6244	36618	CXM-GLM Motor Cover for CXMATIC	C6577
19493	Oil Seal 25*47*07 for CXMATIC	A5816	36572	CXM Locking Bushing for CXMATIC	B6255	36619	CXM-GLM Belt Cover for CXMATIC	C6583
17287	O-Ring 123 17.86x2.62 for CXMATIC	A5852	23646	Sharpener Pivot Ferrule for CXMATIC	B6256	78291	Body Rear Cover for CXMATIC	C6779
17288	O-Ring 3081 20.24x2.62 for CXMATIC	A5854	36573	Fixing Box Bushing for CXMATIC	B6257	36624	G Matic Carriage Side Cover for CXMATIC	C6781
36544	Carriage Rod H-L-C300/330/350 for CXMATIC	B1010A	16909	Sharpener Cover H-L-C for CXMATIC	C1603	19534	Housing Sharpener for CXMATIC	C6807
19496	Carriage Rod C-H for CXMATIC	B1095	36590	AG35-C-H Carriage for CXMATIC	C1854	36629	Bearing 2Z-6003 17x35x10 for CXMATIC	C8006
36549	Shock Absorber Rod 12x185 for CXMATIC	B1252	19527	Carriage Assembly C for CXMATIC	C1901	17334	Bearing 2Z-6205 25x52x15 for CXMATIC	C8011
19499	CXM Carriage Rod for CXMATIC	B1284	78277	Control Board Cable 230/50 for CXMATIC	C3247	16925	Bearing 2RS-6204 20x47x14 for CXMATIC	C8024
36552	C-H350-HM350 Carriage Rod for CXMATIC	B1285	78279	Control Board Cable 230/50 for CXMATIC	C3248	36631	Bearing 2RS-6205 25x52x15 for CXMATIC	C8056
19501	Meat Grip Rod A310 & C for CXMATIC	B1337A	36595	CXM Assembly Carriage Motor Wiring for CXMATIC	C3249	16926	Bearing 2RS-6000 (10x26x8) for CXMATIC	C8067
78270	Body for CXMATIC	B1807	78278	Control Board Cable 400/50 for CXMATIC	C3252	19637	Nut M3 for CXMATIC	D0101
78292	Body Housing for CXMATIC	B1871	78280	Control Board Cable 400/50 for CXMATIC	C3253	19638	Nut M4 for CXMATIC	D0102
36555	Belt Bracket for CXMATIC	B5032	78288	Power Cord 400/50 for CXMATIC	C3287	16928	Nut U5589 M6 for CXMATIC	D0133
19510	Hangover Bracket for CXMATIC	B5033	78287	Power Cord 230/50 for CXMATIC	C3290	36636	Stainless Steel Nut U5589 M6 for CXMATIC	D0133X
17298	Bushing Fastener C for CXMATIC	B6006	19633	Hinge Motor VS for CXMATIC	C3633	19639	Nut U5589 M8 (OMAS) for CXMATIC	D0135
19618	Bushing 8*10*8 for CXMATIC	B6009	17316	Pin 8.5mm for CXMATIC	C4601	19639	Nut U5589 M8 for CXMATIC	D0135
36557	Bushing DU 25x28x30 for CXMATIC	B6021	17317	Pin .11 for CXMATIC	C4602	36637	Stainless Steel Nut U5589 M8 for CXMATIC	D0135X
78252	Bushing 17x45 for CXMATIC	B6023	20423	Pin for CXMATIC	C4620	36639	Stainless Steel Nut U5721 M5 for CXMATIC	D0152X
16904	Bushing Sharpener for CXMATIC	B6048	36601	Rivet 1.9x5 for CXMATIC	C4640	36640	Stainless Steel Domed Nut U5721 M6 for CXMATIC	D0153X

Parts Breakdown

Model MS-IT-0330-A 13645

Item No.	Description	Position	Item No.	Description	Position	Item No.	Description	Position
19642	Nut M8 for CXMATIC	D0155X	13598	Knife MM.330 for CXMATIC	L0608	27888	Pulley Ring for CXMATIC	P1165
19644	Nut M6 for CXMATIC	D0163	36732	Magnet 6x20 for CXMATIC	M0802	17412	Knife Guard for CXMATIC	P1550
36646	Stainless Steel Nut U5588 M6 for CXMATIC	D0163X	36733	Magnet 8x10 for CXMATIC	M0803	36774	Strain Relief for CXMATIC	P2001
36647	Nut U5588 M8 for CXMATIC	D0165	36734	Magnet 12x6 for CXMATIC	M0804	36775	Core Hitch Big for CXMATIC	P2005
36648	Nut U5588 M8 for CXMATIC	D0165X	36752	Terminal Block 1 for CXMATIC	M8008	17415	Strain Relief for CXMATIC	P2008
19645	Nut M10 for CXMATIC	D0167	36735	Magnet 10x12x48 for CXMATIC	M0810	36776	Strain Relief for CXMATIC	P2009
36651	Sharpener Support Nut for CXMATIC	D0183	14787	Grinding Stone C for CXMATIC	M6602	36777	Strain Relief Motor Cover for CXMATIC	P2013
36656	Motor Spacer H/L370 for CXMATIC	D5640	36739	Honing-Finishing Stone for CXMATIC	M6621	36778	Wire-Press for CXMATIC	P2014
36658	EL.Box Spacer for CXMATIC	D5715	36741	Stainless Steel Spring 2.9x4x12 for CXMATIC	M7001	36779	Core-Hitch + Nut for CXMATIC	P2015
36661	Carriage Shock Absorber Spacer for CXMATIC	D5762	17377	Stainless Steel Spring 8.5x1.0x25 for CXMATIC	M7013	36780	Wire Pusher for CXMATIC	P2017
36671	CXM-GLM Unhook Spring Spacer for CXMATIC	D5806	36743	Stainless Steel Spring 9.9x0.7x7 for CXMATIC	M7016	19811	Pin Sharpener for CXMATIC	P3205
36673	Box Spacer for CXMATIC	D5822	36744	Stainless Steel Spring 10.5x1x19 for CXMATIC	M7023	36782	Grinding Pin H-L-C for CXMATIC	P3225
30459	Stop Cam for CXMATIC	E1406	17379	Stainless Steel Spring 11.9x0.7x27 for CXMATIC	M7029	17419	Pin Truing H-L-C for CXMATIC	P322601
36675	Cam Carriage GL Matic for CXMATIC	E1409A	17380	Stainless Steel Spring 13.4x1.3x30 for CXMATIC	M7030	17422	Pin Deflector H-L-C for CXMATIC	P3269
17342	Cam MM 15 for CXMATIC	E1420	19776	Spring 14x1.5x60 for CXMATIC	M7032	17423	Pivot Hinged Support 10x22 (Pin Grinding H-L-C, CE-Version Long) for CXMATIC	P3289
17345	Cam Bearing H300 for CXMATIC	E1458	17381	Spring 22 5x1 8x18 for CXMATIC	M7052	36786	Front Pulley Pin for CXMATIC	P3302A
36680	Carriage Felt for CXMATIC	F1606	19250	Spring 24.8*1.8*15 for CXMATIC	M7071	36787	Pin Rear Pulley for CXMATIC	P3303A
17348	Flange Knife C for CXMATIC	F6034	19248	Spring 15.6*20*2.2 for CXMATIC	M7120	78237	Knife Shaft for CXMATIC	P3323
17349	Handle Flange for CXMATIC	F6090	78283	Screw for CXMATIC	M7132	78264	Shaft for CXMATIC	P3323
17351	Locknut H-L-C for CXMATIC	G5018	36754	Terminal Block AL 17/1W for CXMATIC	M8051	36789	Pin Support Motor for CXMATIC	P3353
36689	Stainless Steel Locknut M8 for CXMATIC	G5027	20263	Motor 120V/60Hz/1Ph for CXMATIC	M8246	23649	Knife Shaft Model C for CXMATIC	P3378
36697	Logging Lock Nut for CXMATIC	G5064	36757	Motor 120/60 for CXMATIC	M8363	17427	Assembly Honing Stone Pin H-L-C for CXMATIC	P3380
36702	Handle C for CXMATIC	I1901A	16952	Motor for New C-Series - Prior to 1999 for CXMATIC	M8430	17427	Assembly Grinding Stone Pin H-L-C for CXMATIC	P3381
17356	Fastener Handle H-L-C for CXMATIC	I1926	16953	Motor C 300-350 - 220V for CXMATIC	M8445	23645	Sharpener Pivot for CXMATIC	P3528
16932	Handle Carriage C for CXMATIC	I1936	78255	Motor 120/60/1 for CXMATIC	M8494	26126	Table C Model for CXMATIC	P4328
19587	Sharpener Knob for CXMATIC	I1957A	19791	Oiler H-L-C for CXMATIC	O4040	78250	Motor Bushing Flat Bar H-L-C for CXMATIC	P4601
36705	Adjustment Knob for CXMATIC	I1970A	17390	Rubber Shock Absorber 16x22x2.5 for CXMATIC	P1019	78249	Motor Bushing Flat Bar H-L-C for CXMATIC	P4617
36708	Assembly Index Knob for CXMATIC	I1990A	17392	PL.Shock Absorb 8.5x20 for CXMATIC	P1034	19831	Gauge Plate Flat Bar VS for CXMATIC	P4621
18220	Handle Carriage H-L-C for CXMATIC	I203576	36761	Shock Absorber for CXMATIC	P103401	16964	Stud Guard Knife C for CXMATIC	P7425
16935	Fibre Gear DP56 80 Z29 M1 75 for CXMATIC	I2402	36762	Rubber Plug for CXMATIC	P1053	16960	Support Plate for C Series Plate for CXMATIC	P4756
17368	Hall Effect Switch 2P for CXMATIC	I3646	16955	Shock Absorber H-L-C for CXMATIC	P1059	36830	Flat Bar C for CXMATIC	P4765
17369	Switch 4x20 for CXMATIC	I3647	17394	Shock Absorber H-L-C for CXMATIC	P1080	18221	Slide Rail Flat 20x400 for CXMATIC	P4815
36723	Switch 4x25 for CXMATIC	I3678	17395	Shock Absorber H-L-C for CXMATIC	P1081	17437	Foot for CXMATIC	P5017
17353	Complete Start/Stop Switch with Control Board for CXMATIC	I1683	19805	Deflector for CXMATIC	P1150	36843	Carriage Plate Assembly for CXMATIC	P5558

Parts Breakdown

Model MS-IT-0330-A 13645

Item No.	Description	Position	Item No.	Description	Position	Item No.	Description	Position
78235	End Grip for CXMATIC	P6729	17461	Washer 17x30 for CXMATIC	R6868	36959	Bracket Magnet for CXMATIC	S9112
17443	End Grip for P4425A & S7702 for CXMATIC	P7018	36891	Stainless Steel Washer 10.5x26x0.5 for CXMATIC	R6871	36960	Switch Bracket for CXMATIC	S9113
36851	Stud Handle for CXMATIC	P7404	36892	Washer 17x30x4 for CXMATIC	R6874	36961	Bracket for CXMATIC	S9134
17444	Stud Carriage H-L-C for CXMATIC	P7431	36893	Stainless Steel Special Washer 8.5x24x2 for CXMATIC	R6897X	78274	Control Panel Housing for CXMATIC	S9265
36855	PBC Insulating Protection for CXMATIC	P7925	36896	Sylicon Washer 17x25x1 for CXMATIC	R6927	78285	Fan Support for CXMATIC	S9315
36858	Reduction Pulley for CXMATIC	P8006	78248	Rotor (A3024 P25120 H/L-C-M-MR-MP) for CXMATIC	R8001A	19877	Rubber Cap for CXMATIC	T1001
36859	Motor Pulley for CXMATIC	P8008	78261	Rotor (A3109 P2521) Stator H.50 for CXMATIC	R8021	19878	Rubber Cap for CXMATIC	T1002
78282	Lock Washer for CXMATIC	P8620	36899	Electric Box 120x80x50 for CXMATIC	S1005	36982	Heyco Cap SP-468 Diam. 12 for CXMATIC	T1022
36865	Sharpener Operating Handle for CXMATIC	P8625	78289	Junction Box Cover for CXMATIC	S100580	36983	Rubber Cap Diam. 13.5 for CXMATIC	T1023
78284	Bracket for CXMATIC	P8626	36901	Plastic Box-Housing CX-GLM for CXMATIC	S101875	36984	Tappo PG11-BM9548 for CXMATIC	T1026
78290	Relay in Junction Box for CXMATIC	R2043	19680	Ball 3 17 for CXMATIC	S3005	78273	Rubber Cap Diam. 16 for CXMATIC	T1027
36873	Resistor 50W 22 OHM for CXMATIC	R4002	19681	Sphere 4 for CXMATIC	S3010	19879	Label for CXMATIC	T1603
19656	Potentiometer for CXMATIC	R4031	17465	Ball 4.76 for CXMATIC	S3015	19880	Label for CXMATIC	T1606
19657	Washer for CXMATIC	R6003	78281	Control Panel Housing Frame for CXMATIC	S3234	36985	Label Plate for CXMATIC	T1617A
17454	Washer for CXMATIC	R6204	36905	Printed Circuit Board (120V/60Hz) CXM-GLM for CXMATIC	S3262	19883	Label Oil for CXMATIC	T1690
78258	Washer 30.5x46.5x0.6 for CXMATIC	R6251	36908	Track C-CD for CXMATIC	S3815	78276	Switch Overlay H-C (CE) for CXMATIC	T1763
36880	Washer U6592 3 for CXMATIC	R6504	36914	Stainless Steel Pin 3x12 for CXMATIC	S7512	16978	Blade Cover Fastener Assembly C for CXMATIC	T5006
17455	Washer U6592 4 for CXMATIC	R6505	19682	Pin 8*70 for CXMATIC	S7523	78243	Motor Fastener H-L-C for CXMATIC	T5010A
17456	Washer U6592 5 for CXMATIC	R6508	36922	Pin M.E.U6875 5x36 for CXMATIC	S7539	36992	9" Belt Fastener for CXMATIC	T5022
36882	Stainless Steel Washer U6592 for CXMATIC	R6508X	19688	Pin 2*12 for CXMATIC	S7552	17486	Fastener Handle H-L-C with Blade Cover Fastener C for CXMATIC	T5036
20422	Washer for CXMATIC	R6509	36927	Pin M.I.S1 D1471 6x20 for CXMATIC	S7568	16981	Knife Shaft Assembly C300 for CXMATIC	T8026
16967	Washer U65926 for CXMATIC	R6512	17475	Pin 8x42 for CXMATIC	S7583	36999	Riding Pin (diam. 28) for CXMATIC	T8538
17457	Stainless Steel Washer U6592 6 for CXMATIC	R6512X	19867	Pin D10 M6 L26 for CXMATIC	S7594	78239	Knife Shaft for CXMATIC	T9607
16968	Washer U65928 for CXMATIC	R6520	36930	Pin M.E.U6873 3x22 for CXMATIC	S7612	78263	Plastic Bar L=260 for CXMATIC	T9607
36884	Stainless Steel Washer U6592 8 for CXMATIC	R6520X	17479	Stator H-C-GF for CXMATIC	S8405	78242	Oil Line for CXMATIC	T975501
36885	Stainless Steel Washer U6592 10 for CXMATIC	R6530X	78244	Stator 110V/50Hz/1 for CXMATIC	S8416	78268	Gauge Plate C330 for CXMATIC	V3077
36886	Washer U6592 16 for CXMATIC	R6560	19870	Stator 120/60 for CXMATIC	S8562	78241	Fan Motor H-L-C for CXMATIC	V4006A
17458	Contact Washer for CXMATIC	R6806	36934	Tray Bracket for CXMATIC	S8802	19911	Fan for CXMATIC	V4011
36889	Washer 10.5x16x1 for CXMATIC	R6816	19871	Bracket Sharpener HLC for CXMATIC	S8809	37013	Motor Fan MEC80 148x16 for CXMATIC	V4014
19672	Washer 17*23*5 for CXMATIC	R6833	36945	Carriage Pulley Bracket for CXMATIC	S8907	37017	Screw STTC U6113 M4x30 for CXMATIC	V6009
16969	Washer 18.2x25x0.5 for CXMATIC	R6840	36946	Bracket for CXMATIC	S8910	17492	Screw STTC U6113 M6x40 for CXMATIC	V6013
17460	Washer 34.2x46x0.5 for CXMATIC	R6846	78236	Bracket Washer C for CXMATIC	S8951A	26127	Stud C Model for CXMATIC	V602115
19674	Washer for CXMATIC	R6848	36952	Magnet Support for CXMATIC	S8991	37020	Screw M5x8 U5923 for CXMATIC	V6028
19675	Washer C for CXMATIC	R6863	36955	Switch Support for CXMATIC	S9056	37021	Screw for CXMATIC	V6030

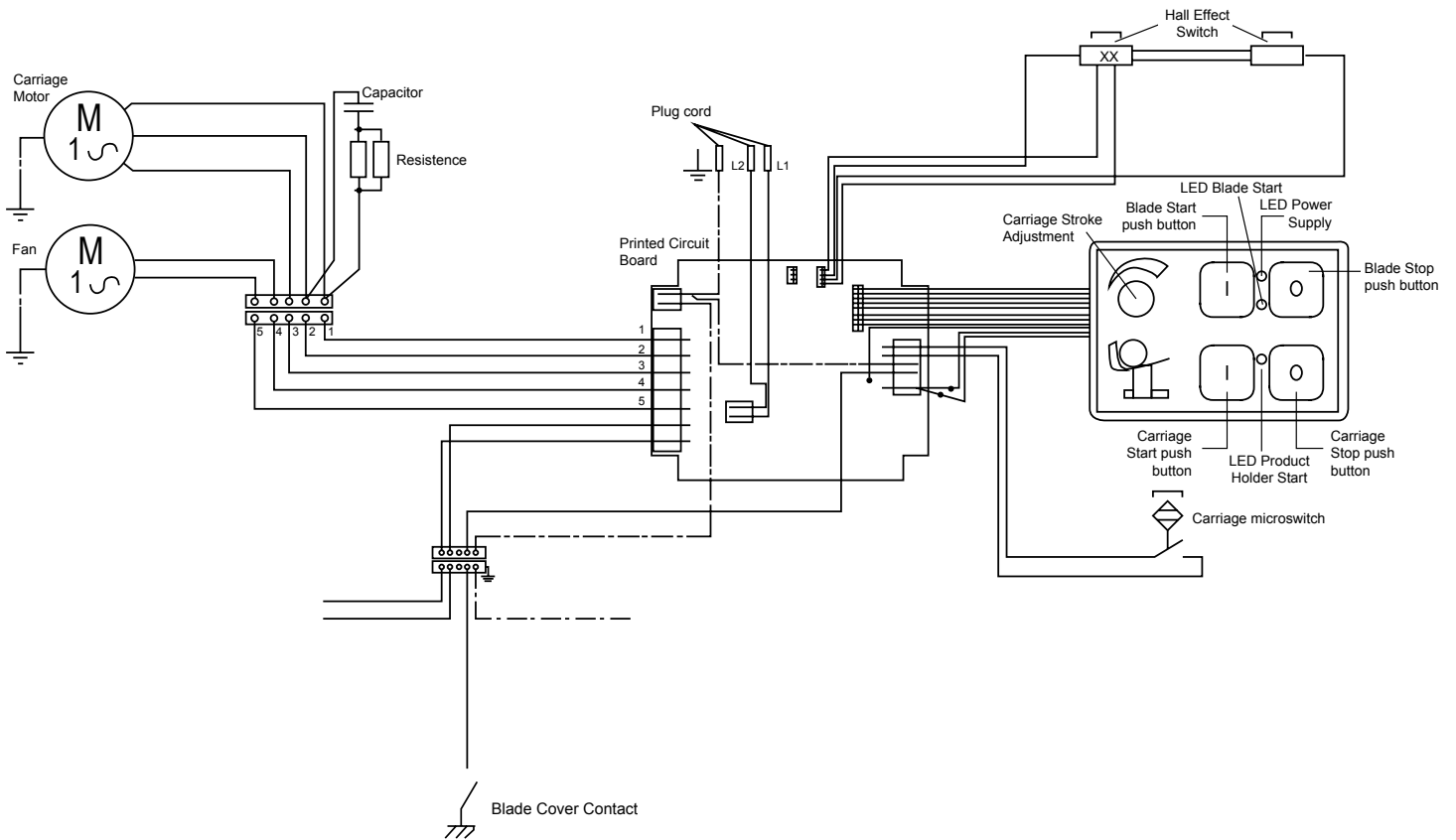
Parts Breakdown

Model MS-IT-0330-A 13645

Item No.	Description	Position	Item No.	Description	Position	Item No.	Description	Position
37023	Screw STEI U5929 M5x5 for CXMATIC	V6065	37050	Screw TC AUT.D7971 4.2X9 for CXMATIC	V6285	37080	Stainless Steel Screw U6109 M4x40 for CXMATIC	V702415
19691	Grub Screw M6*6 for CXMATIC	V6066	37052	Screw TC AUT.U6951 4.2x16 for CXMATIC	V6291	17498	Screw TSPEI U5933 M4x10 for CXMATIC	V7043
19692	Screw M6*8 for CXMATIC	V6067	37053	Screw AUT.U6954 3.9x25 for CXMATIC	V6293	37084	Stainless Steel Screw TSPEI U5933 M10x3 for CXMATIC	V7052X
37030	Screw M12x16 U5927 for CXMATIC	V6081	37055	Stainless Steel Screw M 5x8 U5931 for CXMATIC	V634015	37086	Stainless Steel Screw M8x20 U5933 for CXMATIC	V7070X
37031	Screw STEI U5929 M8x16 for CXMATIC	V6083	37058	Stainless Steel Screw M4x8 for CXMATIC	V6370	19713	Screw Sharpener for CXMATIC	V7710
37033	Screw TC U6107 M4x8 for CXMATIC	V6206	78262	Screw U55739 M5x16 for CXMATIC	V6406	17503	Screw M5x13 for CXMATIC	V7908
19697	Screw M5*16 for CXMATIC	V6211	37061	Screw TE U5739 M8x35 INOX for CXMATIC	V6411X	19715	Screw Sharpener for CXMATIC	V7910
19699	Screw M4*25 for CXMATIC	V6231	37064	Screw TE U5739 M10x35 for CXMATIC	V6415X	19717	Screw M6*50 for CXMATIC	V7917
19702	Screw M6*25 for CXMATIC	V6246	37066	Screw TE U5737 M6x15 for CXMATIC	V6421	19720	Screw M6 for CXMATIC	V7934
37041	Stainless Steel Screw M8x20 for CXMATIC	V625315	37071	Stainless Steel Screw TE U5739 M6x10 for CXMATIC	V6450X	37095	Screw for Rod 6x13 for CXMATIC	V7993A
37042	Screw TCEI U5931 M8x25 for CXMATIC	V6254	37072	Stainless Steel Screw TE U5739 M8x20 for CXMATIC	V6460X	37100	Carriage Screw for CXMATIC	V8017
37044	Stainless Steel Screw M8x60 U5931 for CXMATIC	V625815	37073	Stainless Steel Screw TE U5739 M8x25 for CXMATIC	V6461X	19920	Screw M8x30 for CXMATIC	V8036
37046	Screw TC AUT.D7971 2.9x6.5 for CXMATIC	V6274	37078	Stainless Steel Screw TSP U6109 M5x12 for CXMATIC	V7013X	37106	Stainless Steel Switch Screw M5x10 for CXMATIC	V8048
19706	Screw for CXMATIC	V6278	17497	Stainless Steel Screw TSP U6109 M5x15 for CXMATIC	V7014X	37107	Stainless Steel Screw M6x30 for CXMATIC	V8052
37048	Screw TCTC AUDT.D7981 3.5x9.5 for CXMATIC	V6279	78275	Screw TSPU6109 M3x6 for CXMATIC	V7023			

Electrical Schematics

Model MS-IT-0330-A 13645





Warranty Registration

Thank you for purchasing an Omcan product. To register your warranty for this product, complete the information below, tear off the card at the perforation and then send to the address specified below. You can also register online by visiting:

Merci d'avoir acheté un produit Omcan. Pour enregistrer votre garantie pour ce produit, complétez les informations ci-dessous, détachez la carte au niveau de la perforation, puis l'envoyer à l'adresse spécifiée ci-dessous. Vous pouvez également vous inscrire en ligne en visitant:

Gracias por comprar un producto Omcan usted. Para registrar su garantía para este producto, complete la información a continuación, cortar la tarjeta en la perforación y luego enviarlo a la dirección indicada a continuación. También puede registrarse en línea en:

www.omcan.com/warrantyregistration.html

For mailing in Canada

Pour postale au Canada

Por correo en Canadá

For mailing in the US

Pour diffusion aux États-Unis

Por correo en los EE.UU.

OMCAN

PRODUCT WARRANTY REGISTRATION

3115 Pepper Mill Court,

Mississauga, Ontario

Canada, L5L 4X5

OMCAN

PRODUCT WARRANTY REGISTRATION

4450 Witmer Industrial Estates, Unit 4,

Niagara Falls, New York

USA, 14305

or Email to: service@omcan.com



Purchaser's Information

Name: _____

Company Name: _____

Address: _____

Telephone: _____

City: _____ Province or State: _____ Postal or Zip: _____

Email Address: _____

Country: _____

Type of Company:

Restaurant Bakery Deli

Butcher Supermarket Caterer

Institution (*specify*): _____

Other (*specify*): _____

Dealer from which Purchased: _____

Dealer City: _____ Dealer Province or State: _____

Invoice: _____

Model Name: _____ Model Number: _____

Serial Number: _____

Machine Description: _____

Date of Purchase (MM/DD/YYYY): _____

Date of Installation (MM/DD/YYYY): _____

Would you like to extend the warranty? Yes No

Thank you for choosing Omcan | Merci d'avoir choisi Omcan | Gracias por elegir Omcan



Since 1951 Omcan has grown to become a leading distributor of equipment and supplies to the North American food service industry. Our success over these many years can be attributed to our commitment to strengthen and develop new and existing relationships with our valued customers and manufacturers. Today with partners in North America, Europe, Asia and South America, we continually work to improve and grow the company. We strive to offer customers exceptional value through our qualified local sales and service representatives who provide convenient access to over 3,500 globally sourced products.

Depuis 1951 Omcan a grandi pour devenir un des “leaders” de la distribution des équipements et matériel pour l’industrie des services alimentaires en Amérique du Nord. Notre succès au cours de ces nombreuses années peut être attribué à notre engagement à renforcer et à développer de nouvelles et existantes relations avec nos clients et les fabricants de valeur. Aujourd’hui avec des partenaires en Amérique du Nord, Europe, Asie et Amérique du Sud, nous travaillons continuellement à améliorer et développer l’entreprise. Nous nous efforçons d’offrir à nos clients une valeur exceptionnelle grâce à nos ventes locales qualifiées et des représentants de service qui offrent un accès facile à plus de 3500 produits provenant du monde entier.

Desde 1951 Omcan ha crecido hasta convertirse en un líder en la distribución de equipos y suministros de alimentos en América del Norte industria de servicios. Nuestro éxito en estos años se puede atribuir a nuestro compromiso de fortalecer y desarrollar nuevas relaciones existentes con nuestros valiosos clientes y fabricantes. Hoy con socios de América del Norte, Europa, Asia y América del Sur, que trabajan continuamente para mejorar y crecer la empresa. Nos esforzamos por ofrecer a nuestros clientes valor excepcional a través de nuestro local de ventas y representantes de los servicios que proporcionan un fácil acceso a más de 3,500 productos con origen a nivel mundial.

