



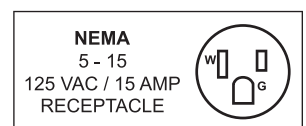
**Display Warmers**  
*Models DW-CN-0097, 0107, 0137*  
*Items 40000, 40002, 40001*  
**Instruction Manual**



*Revised - 10/15/2019*



Toll Free: 1-800-465-0234  
Fax: 905-607-0234  
Email: [service@omcan.com](mailto:service@omcan.com)  
[www.omcan.com](http://www.omcan.com)



# ***Table of Contents***

Model DW-CN-0097 / Model DW-CN-0107 / Model DW-CN-0137

---

<b>Section</b>	<b>Page</b>
General Information -----	3 - 4
Safety and Warranty -----	4 - 6
Technical Specifications -----	6
Installation -----	7
Operation -----	7
Maintenance -----	7 - 8
Parts Breakdown -----	9 - 13
Electrical Schematics -----	14
Warranty Registration -----	15



# General Information

---

Omcan Manufacturing and Distributing Company Inc., Food Machinery of America, Inc. dba Omcan and Omcan Inc. are not responsible for any harm or injury caused due to any person's improper or negligent use of this equipment. The product shall only be operated by someone over the age of 18, of sound mind, and not under the influence of any drugs or alcohol, who has been trained in the correct operation of this machine, and is wearing authorized, proper safety clothing. Any modification to the machine voids any warranty, and may cause harm to individuals using the machine or in the vicinity of the machine while in operation.

## CHECK PACKAGE UPON ARRIVAL

Upon receipt of an Omcan shipment please inspect for external damage. If no damage is evident on the external packaging, open carton to ensure all ordered items are within the box, and there is no concealed damage to the machine. If the package has suffered rough handling, bumps or damage (visible or concealed), please note it on the bill of lading before accepting the delivery and contact Omcan within 24 hours, so we may initiate a claim with the carrier. A detailed report on the extent of the damage caused to the machine must be filled out within three days, from the delivery date shown in the shipping documents. Omcan has no recourse for damaged products that were shipped collect or third party.

**Before operating any equipment, always read and familiarize yourself with all operation and safety instructions.**

Omcan would like to thank you for purchasing this machine. It's of the utmost importance to save these instructions for future reference. Also save the original box and packaging for shipping the equipment if servicing or returning of the machine is required.

---

Omcan Fabrication et distribution Compañie Limité et Food Machinery d'Amérique, dba Omcan et Omcan Inc. ne sont pas responsables de tout dommage ou blessure causé du fait que toute personne ait utilisé cet équipement de façon irrégulière. Le produit ne doit être exploité que par quelqu'un de plus de 18 ans, saine d'esprit, et pas sous l'influence d'une drogue ou d'alcool, qui a été formé pour utiliser cette machine correctement, et est vêtu de vêtements de sécurité approprié. Toute modification de la machine annule toute garantie, et peut causer un préjudice à des personnes utilisant la machine ou des personnes à proximité de la machine pendant son fonctionnement.

## VÉRIFIEZ LE COLIS DÈS RÉCEPTION

Dès réception d'une expédition d'Omcan veuillez inspecter pour dommages externes. Si aucun dommage n'est visible sur l'emballage externe, ouvrez le carton afin de s'assurer que tous les éléments commandés sont dans la boîte, et il n'y a aucun dommage dissimulé à la machine. Si le colis n'a subi aucune mauvaises manipulations, de bosses ou de dommages (visible ou cachée), notez-le sur le bond de livraison avant d'accepter la livraison et contactez Omcan dans les 24 heures qui suivent, pour que nous puissions engager une réclamation auprès du transporteur. Un rapport détaillé sur l'étendue des dommages causés à la machine doit être rempli dans un délai de trois jours, à compter de la date de livraison indiquée dans les documents d'expédition. Omcan n'a aucun droit de recours pour les produits endommagés qui ont été expédiés ou cueilli par un tiers transporteur.

# General Information

---

Avant d'utiliser n'importe quel équipement, toujours lire et vous familiariser avec toutes les opérations et les consignes de sécurité.

Omcan voudrais vous remercier d'avoir choisi cette machine. Il est primordial de conserver ces instructions pour une référence ultérieure. Également conservez la boîte originale et l'emballage pour l'expédition de l'équipement si l'entretien ou le retour de la machine est nécessaire.

---

Omcan Empresa De Fabricacion Y Distribucion Inc. Y Maquinaria De Alimentos De America, Inc. dba Omcan y Omcan Inc. no son responsables de ningun daño o perjuicio causado por cualquier persona inadecuada o el uso descuidado de este equipo. El producto solo podra ser operado por una persona mayor de 18 años, en su sano juicio y no bajo alguna influencia de droga o alcohol, y que este ha sido entrenado en el correcto funcionamiento de esta máquina, y ésta usando ropa apropiada y autorizada. Cualquier modificación a la máquina anula la garantía y puede causar daños a las personas usando la máquina mientras esta en el funcionamiento.

## REVISE EL PAQUETE A SU LLEGADA

Tras la recepcion de un envio Omcan favor inspeccionar daños externos. Si no hay daños evidentes en el empaque exterior, Habra el carton para asegurarse que todos los articulos solicitados estén dentro de la caja y no encuentre daños ocultos en la máquina. Si el paquete ha sufrido un manejo de poco cuidado, golpes o daños (visible o oculto) por favor anote en la factura antes de aceptar la entrega y contacte Omcan dentro de las 24 horas, de modo que podamos iniciar una reclamación con la compañía. Un informe detallado sobre los daños causados a la máquina debe ser llenado en el plazo de tres días, desde la fecha de entrega que se muestra en los documentos de envío. Omcan no tiene ningun recurso por productos dañados que se enviaron a recoger por terceros.

Antes de utilizar cualquier equipo, siempre lea y familiarizarse con todas las instrucciones de funcionamiento y seguridad.

Omcan le gustaría darle las gracias por la compra de esta máquina. Es de la mayor importancia para salvar estas instrucciones para futuras consultas. Además, guarda la caja original y el embalaje para el envío del equipo si servicio técnico o devolución de la máquina que se requiere.

# Safety and Warranty

---

1. This instruction manual contains information about the installation, operation and maintenance of the device and should be consulted as an important source of information and reference guide.
  2. Awareness of the safety instructions and instructions for use in this manual will ensure the safe and correct use of the device.
- To prevent hazards and to ensure optimum efficiency, no modifications or alterations to the device that are not explicitly approved by the manufacturer may be undertaken. This device may only be operated in



# Safety and Warranty

technically proper and safe condition.

- The device should be never left unattended during operation. Keep away children.
- Preserve this manual safely. When passing on/selling the device to a third party, the manuals must be handed over along with the device.
- Every person using the device must act in accordance to the manuals and under consideration of the safety advice.
- The device is to be used indoors only.
- Any technical interventions, as well as assembly and maintenance are to be made by a qualified customer service only.
- This appliance is not intended for use by persons (including children) with reduced physical, sensory or mental capabilities, or lack of experience and knowledge, unless they have been given supervision or instruction concerning use of the appliance by a person responsible for their safety.
- Children should be supervised to ensure that they do not play with the appliance.
- The operation manual is not suitable for the persons (including children) with reduced physical, sensory or mental capabilities, or lack of experience and knowledge.

<p><b>Exclusive power outlet</b> The power outlet must be in close proximity to the ground.</p>	<p><b>No shared power outlets</b> Warmer cable should never share the power outlet with any other appliance, as cable will overheat and may result in a fire.</p>
<p><b>Protect cables</b> Extra caution should be used when handling cables, as broken or damaged cables can cause sparking and may result in a fire.</p>	<p><b>No water flushing</b> Never flush the warmer surface. This can cause leakage, which may result in electrical damage or fire.</p>
<p><b>Never store flammables and explosives</b> No explosives or flammables should be stored in, or in proximity to, the warmer, such as gasoline, alcohol, and adhesives.</p>	

Omcan display warmers are engineered and designed to maintain previously cooked foods at serving temperatures. Improper use of this machine’s maximum temperature for extended periods of time, in an attempt to thoroughly cook food products, is prohibited. Such operation will void the manufacturer’s warranty and may result in under cooked and therefore unsafe food.

## 1 YEAR PARTS AND LABOUR WARRANTY

Within the warranty period, contact Omcan Inc. at 1-800-465-0234 to schedule an Omcan authorized service technician to repair the equipment locally.

Unauthorized maintenance will void the warranty. Warranty covers electrical and part failures, not improper use.

Please see <https://omcan.com/disclaimer> for complete info.

# Safety and Warranty

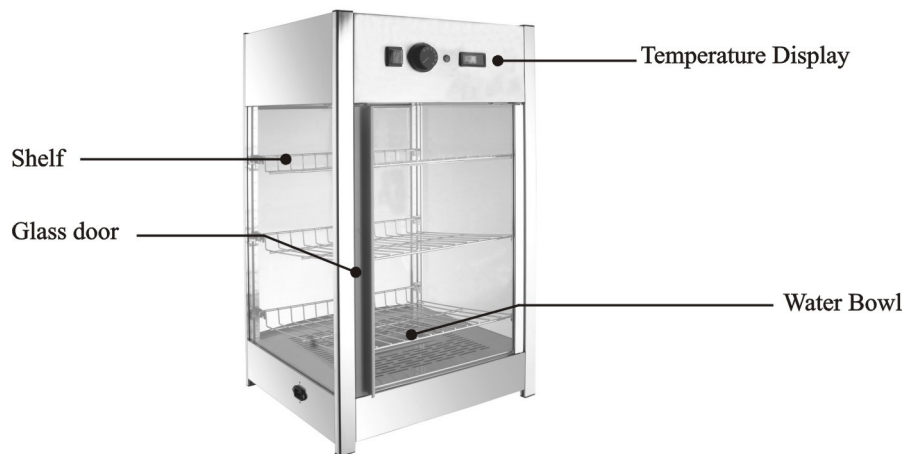
## WARNING:

The packaging components are classified as normal solid urban waste and can therefore be disposed of without difficulty.

In any case, for suitable recycling, we suggest disposing of the products separately (differentiated waste) according to the current norms.

**DO NOT DISCARD ANY PACKAGING MATERIALS IN THE ENVIRONMENT!**

# Technical Specifications



Model	DW-CN-0097	DW-CN-0107	DW-CN-0137
Temperature Range	30°C - 90°C / 86°F - 194°F		
Input Power	786 W	986 W	1050 W
Amps	7.2A	9A	9.5A
Electrical	110V / 60Hz / 1Ph		
Lamp Power	11 W		
Volume	97 L / 3.4 cu. ft.	107 L / 3.8 cu. ft.	137 L / 4.8 cu. ft.
Grade of Waterproof	IPX3		
Exterior / Interior Lights	LED Lights x 1		
Dimensions	18" x 17.8" x 30.9" 457 x 452 x 785mm	25.5" x 19" x 25.9" 648 x 483 x 658mm	25.5" x 19.2" x 30.9" 648 x 489 x 785mm
Weight	48.5 lbs. / 22 kgs.	49.6 lbs. / 22.5 kgs.	59.5 lbs. / 27 kgs.
Item Number	40000	40002	40001

## ***Installation***

---

- Place the device on top of a safe and even surface which supports the weight of the device, and is not heat sensitive.
- Never place the device on a flammable surface (such as table cloth, carpet, etc).
- Do not place the device near open fireplaces, electric ovens/arc furnaces/electric heaters or other heat sources.
- Ensure that the power outlet is easily accessible to the device.

## ***Operation***

---

- Before first use, clean the inner sides and the playing grids with a soft cloth and a mild cleaning agent. Afterwards, dry the device thoroughly.
- To fill water bowl, remove the water bowl from the device and then fill the water bowl with water.
- Connect the device to a single grounded power outlet.
- Set the temperature as required for respective foods. You may adjust the desired temperature between 30°C-90°C / 86°F-194 °F.
- The temperature inside of the hot display can be read from the front display.
- Put the food in appropriate containers before placing them inside the hot display.
- Always use safety gloves or tongs when placing or removing foods, as some of the device's parts become very hot.
- The foods are kept warm at the temperature set.
- Open rear side door to place or remove foods.
- Turn on light switch when inner light is desired.
- Disconnect the device from the power outlet when the device is not in use.

## ***Maintenance***

---

- Before cleaning or repairing, make sure the device has been disconnected from the power socket and has cooled down.
- Do not use any acidic agents and make sure that no water enters the device.
- To protect yourself from electric shock, never immerse the device, its cables or the plug in water or any other liquids.
- Do not use any type of water pressure jet for cleaning the device.

### **CLEANING**

- The device should be cleaned regularly.
- Clean the device in the inside and outside with a soft, damp cloth and a mild cleaning agent.
- Clean the placing grids and the housing with a soft, damp cloth and a mild cleaning agent.
- Clean the water bowl regularly. Calcifications at the water bowl may be removed with common agents or

# Maintenance

---

liquids.

- Only use a soft cloth to clean the display warmer, and make sure you never use any kind of abrasive agents or pads which could scratch the surface.
- After the cleaning procedure, you should use a soft and dry cloth to dry and polish the surface.
- Make sure the device has been cleaned properly before storing it in a dry place.

## MAINTENANCE

- Check the electrical cord regularly to ensure it is not damaged in any way.
- Never use the device if the electrical cord is damaged. If the electrical cord is damaged, it must be replaced by a qualified electrician.
- Only a qualified technician should carry out repairs and maintenance of the device. Do not attempt to repair the device by yourself.

## CAUTION

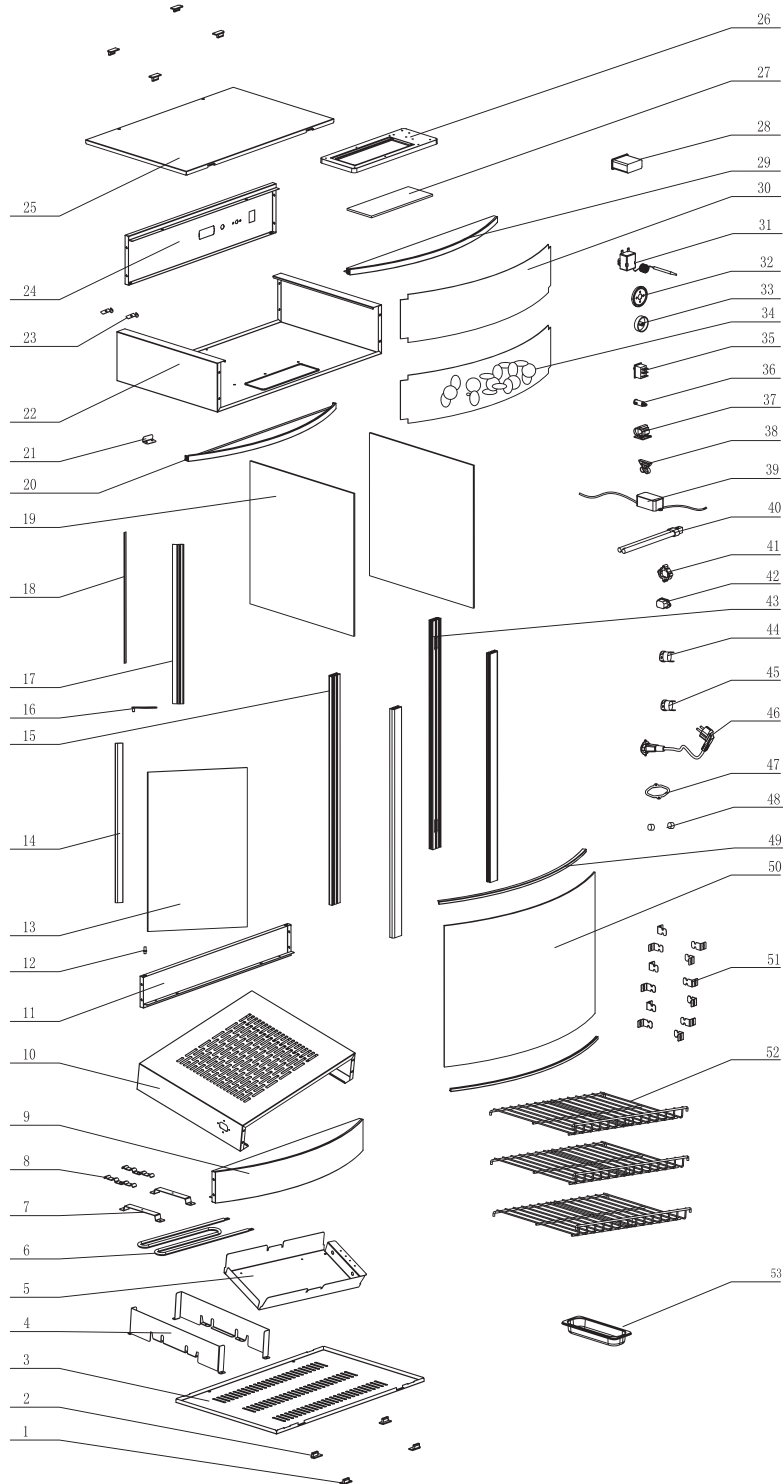
- Children should be supervised to ensure that they do not play with the appliance.
- If the supply cord is damaged, it must be replaced by the manufacturer, its service agent or similarly qualified persons in order to avoid a hazard.

## REFERENCE

Item Number	Model Number	Description	Manufacturer Model Number
40000	DW-CN-0097	Display Warmer 97 L / 3.4 cu. ft. 800 W 110V/60/1 cQPSus	RTR-97L
40002	DW-CN-0107	Display Warmer 107 L / 3.8 cu. ft. 1000 W 110V/60/1 cQPSus	RTR-107L
40001	DW-CN-0137	Display Warmer 137 L / 4.8 cu. ft. 1100 W 110V/60/1 cQPSus	RTR-137L

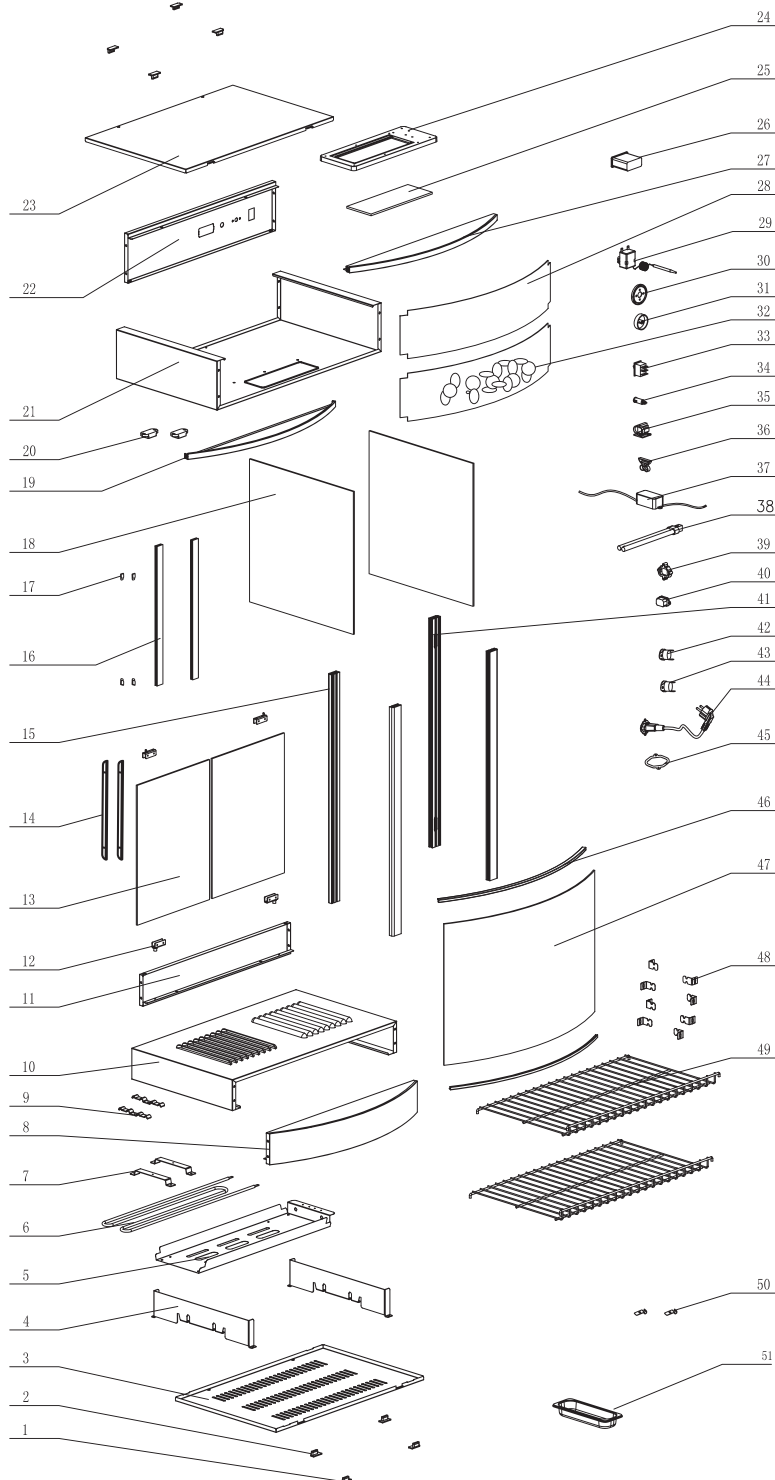
# Parts Breakdown

Model DW-CN-0097 40000



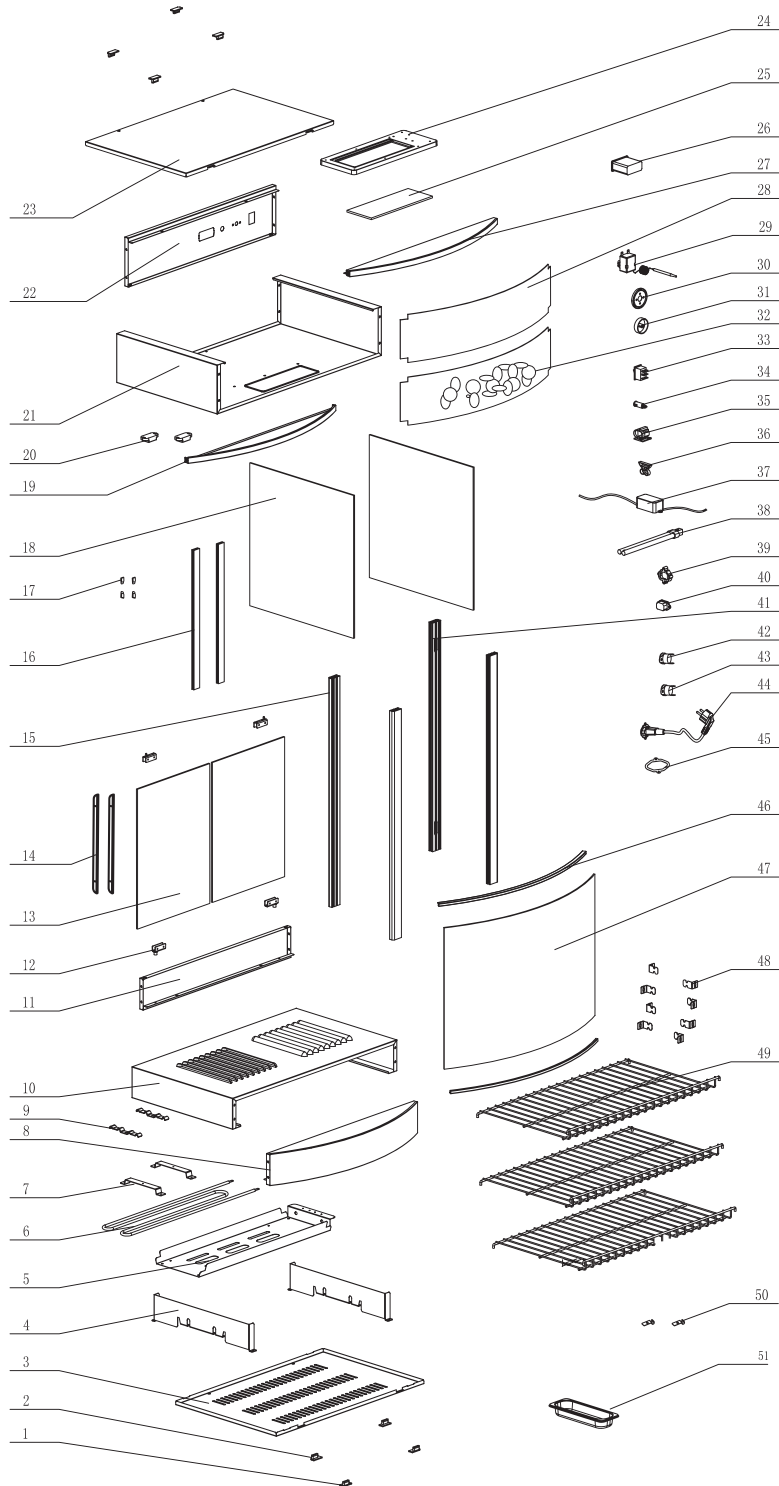
# Parts Breakdown

Model DW-CN-0107 40002



# Parts Breakdown

Model DW-CN-0137 40001



# Parts Breakdown

## Model DW-CN-0097 40000

Item No.	Description	Position	Item No.	Description	Position	Item No.	Description	Position
70819	Rubber Feet Left for RTR97L	1	70837	Side Glass for RTR97L	19	70855	Lamp Holder for RTR97L	37
70820	Rubber Feet Right for RTR97L	2	70838	Component of Front Panel for RTR97L	20	70856	Lamp Bracket for RTR97L	38
70821	Bottom Board for RTR97L	3	70839	Door Stopper for RTR97L	21	70857	Electronic Ballast for RTR97L	39
70822	Bottom Frame for RTR97L	4	70840	Ceiling Fan for RTR97L	22	70858	Fluorescent Lamp for RTR97L	40
70823	Tray for Heater for RTR97L	5	70841	Probe Clip for RTR97L	23	70859	Socket Connector for RTR97L	41
70824	Heating Element for RTR97L	6	70842	Control Panel for RTR97L	24	70860	Socket for RTR97L	42
70825	Bracket for Heater for RTR97L	7	70843	Cover Board for RTR97L	25	70861	Back Pillar for RTR97L	43
70826	Heater Clamp for RTR97L	8	70844	Transparent Lamp Cover for RTR97L	26	70862	Thermostat T1/33 for RTR97L	44
70827	Component of Front Panel for RTR97L	9	70845	Fixed Plate for Lamp Cover for RTR97L	27	70863	Thermostat T1M/33 for RTR97L	45
70828	Ventilated Board for RTR97L	10	70846	Thermometer for RTR97L	28	30621	Power Cord for RTR97L	46
70829	Back Panel for RTR97L	11	70847	Component of Front Panel for RTR97L	29	70865	Plug Clamp for RTR97L	47
70830	Door Pin for RTR97L	12	70848	Transparent Plate for RTR97L	30	70866	Magnet for RTR97L	48
70831	Door Glass for RTR97L	13	70849	Temperature Controller for RTR97L	31	70867	Decorative Strip for RTR97L	49
70832	Barrier Strip for RTR97L	14	70850	Fixed Ring for Thermostat for RTR97L	32	70868	Curved Glass for RTR97L	50
70833	Front Pillar for RTR97L	15	70851	Knob of Thermostat for RTR97L	33	70869	Shelf Clamp for RTR97L	51
70834	Upper Gemel for RTR97L	16	70852	Advertisement Board for RTR97L	34	70870	Shelf for RTR97L	52
70835	Door Frame Left for RTR97L	17	70853	Switch for RTR97L	35	70871	Water Tank for RTR97L	53
70836	Magnet Strip for RTR97L	18	70854	Indicator Light for RTR97L	36			

## Model DW-CN-0107 40002

Item No.	Description	Position	Item No.	Description	Position	Item No.	Description	Position
70872	Rubber Feet Left for RTR107L	1	70889	Side Glass for RTR107L	18	70906	Lamp Holder for RTR107L	35
70873	Rubber Feet Right for RTR107L	2	70890	Component of Front Panel for RTR107L	19	70907	Lamp Bracket for RTR107L	36
70874	Bottom Board for RTR107L	3	70891	Magnet for RTR107L	20	70908	Electronic Ballast for RTR107L	37
70875	Bottom Frame for RTR107L	4	70892	Ceiling Board for RTR107L	21	70909	Fluorescent Lamp for RTR107L	38
70876	Tray for Heater for RTR107L	5	70893	Control Panel for RTR107L	22	70910	Socket Connector for RTR107L	39
70877	Heating Element for RTR107L	6	70894	Cover Board for RTR107L	23	70911	Socket for RTR107L	40
70878	Bracket for Heater for RTR107L	7	70895	Transparent Lamp Cover for RTR107L	24	70912	Back Pillar for RTR107L	41
70879	Component of Front Panel for RTR107L	8	70896	Fixed Plate for Lamp Cover for RTR107L	25	70913	Thermostat T1/33 for RTR107L	42
70880	Heater Clamp for RTR107L	9	70897	Thermometer for RTR107L	26	70914	Thermostat T1M/33 for RTR107L	43
70881	Ventilated Board for RTR107L	10	70898	Component of Front Panel for RTR107L	27	30621	Power Cord for RTR107L	44
70882	Back Panel for RTR107L	11	70899	Transparent Plate for RTR107L	28	70916	Plug Clamp for RTR107L	45
70883	Door Hinge for RTR107L	12	70900	Temperature Controller for RTR107L	29	70917	Decorative Strip for RTR107L	46
70884	Door Glass for RTR107L	13	70901	Fixed Ring for Thermostat for RTR107L	30	70918	Curved Glass for RTR107L	47
70885	Door Knob for RTR107L	14	70902	Knob of Thermostat for RTR107L	31	70919	Shelf Clamp for RTR107L	48
70886	Front Pillar for RTR107L	15	70903	Advertisement Board for RTR107L	32	70920	Shelf for RTR107L	49
70887	Door Frame Left for RTR107L	16	70904	Switch for RTR107L	33	70921	Probe Clip for RTR107L	50
70888	Magnet Strip for RTR107L	17	70905	Indicator Light for RTR107L	34	70922	Water Tank for RTR107L	51

# Parts Breakdown

## Model DW-CN-0137 40001

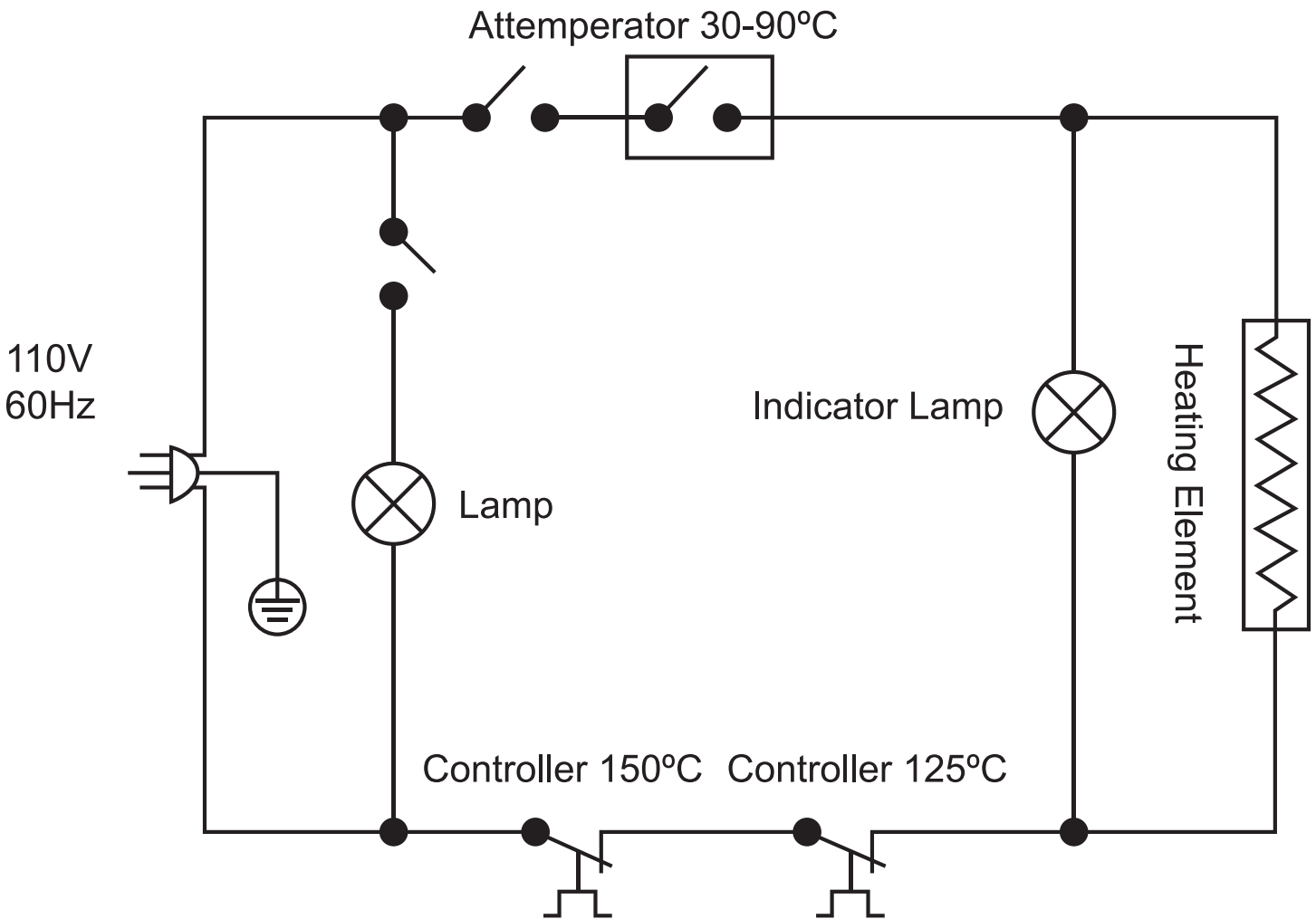
Item No.	Description	Position	Item No.	Description	Position	Item No.	Description	Position
70923	Rubber Feet Left for RTR137L	1	70940	Side Glass for RTR137L	18	70957	Lamp Holder for RTR137L	35
70924	Rubber Feet Right for RTR137L	2	70941	Component of Front Panel for RTR137L	19	70958	Lamp Bracket for RTR137L	36
70925	Bottom Board for RTR137L	3	70942	Magnet for RTR137L	20	70959	Electronic Ballast for RTR137L	37
70926	Bottom Frame for RTR137L	4	70943	Ceiling Board for RTR137L	21	70960	Fluorescent Lamp for RTR137L	38
70927	Tray for Heater for RTR137L	5	70944	Control Panel for RTR137L	22	70961	Socket Connector for RTR137L	39
70928	Heating Element for RTR137L	6	70945	Cover Board for RTR137L	23	70962	Socket for RTR137L	40
70929	Bracket for Heater for RTR137L	7	70946	Transparent Lamp Cover for RTR137L	24	70963	Back Pillar for RTR137L	41
70930	Component of Front Panel for RTR137L	8	70947	Fixed Plate for Lamp Cover for RTR137L	25	70964	Thermostat T1/33 for RTR137L	42
70931	Heater Clamp for RTR137L	9	70948	Thermometer for RTR137L	26	70965	Thermostat T1M/33 for RTR137L	43
70932	Ventilated Board for RTR137L	10	70949	Component of Front Panel for RTR137L	27	30621	Power Cord for RTR137L	44
70933	Back Panel for RTR137L	11	70950	Transparent Plate for RTR137L	28	70967	Plug Clamp for RTR137L	45
70934	Door Hinge for RTR137L	12	70951	Temperature Controller for RTR137L	29	70968	Decorative Strip for RTR137L	46
70935	Door Glass for RTR137L	13	70952	Fixed Ring for Thermostat for RTR137L	30	70969	Curved Glass for RTR137L	47
70936	Door Knob for RTR137L	14	70953	Knob of Thermostat for RTR137L	31	70970	Shelf Clamp for RTR137L	48
70937	Front Pillar for RTR137L	15	70954	Advertisement Board for RTR137L	32	70971	Shelf for RTR137L	49
70938	Door Frame for RTR137L	16	70955	Switch for RTR137L	33	70972	Probe Clip for RTR137L	50
70939	Magnet Strip for RTR137L	17	70956	Indicator Light for RTR137L	34	70973	Water Tank for RTR137L	51

# Electrical Schematics

**Model DW-CN-0097** 40000

**Model DW-CN-0107** 40002

**Model DW-CN-0137** 40001





# Warranty Registration

Thank you for purchasing an Omcan product. To register your warranty for this product, complete the information below, tear off the card at the perforation and then send to the address specified below. You can also register online by visiting:

Merci d'avoir acheté un produit Omcan. Pour enregistrer votre garantie pour ce produit, complétez les informations ci-dessous, détachez la carte au niveau de la perforation, puis l'envoyer à l'adresse spécifiée ci-dessous. Vous pouvez également vous inscrire en ligne en visitant:

Gracias por comprar un producto Omcan usted. Para registrar su garantía para este producto, complete la información a continuación, cortar la tarjeta en la perforación y luego enviarlo a la dirección indicada a continuación. También puede registrarse en línea en:

<https://omcan.com/warranty-registration/>

For mailing in Canada

Pour postale au Canada

Por correo en Canadá

**OMCAN**

PRODUCT WARRANTY REGISTRATION

3115 Pepper Mill Court,

Mississauga, Ontario

Canada, L5L 4X5

For mailing in the US

Pour diffusion aux États-Unis

Por correo en los EE.UU.

**OMCAN**

PRODUCT WARRANTY REGISTRATION

4450 Witmer Industrial Estates, Unit 4,

Niagara Falls, New York

USA, 14305

*or email to: [service@omcan.com](mailto:service@omcan.com)*



Purchaser's Information

Name: \_\_\_\_\_

Address: \_\_\_\_\_

City: \_\_\_\_\_ Province or State: \_\_\_\_\_ Postal or Zip: \_\_\_\_\_

Country: \_\_\_\_\_

Dealer from which Purchased: \_\_\_\_\_

Dealer City: \_\_\_\_\_ Dealer Province or State: \_\_\_\_\_

Invoice: \_\_\_\_\_

Model Name: \_\_\_\_\_ Model Number: \_\_\_\_\_

Machine Description: \_\_\_\_\_

Date of Purchase (MM/DD/YYYY): \_\_\_\_\_

Would you like to extend the warranty?  Yes  No

Company Name: \_\_\_\_\_

Telephone: \_\_\_\_\_

Email Address: \_\_\_\_\_

Type of Company:

Restaurant  Bakery  Deli

Butcher  Supermarket  Caterer

Institution (*specify*): \_\_\_\_\_

Other (*specify*): \_\_\_\_\_

Serial Number: \_\_\_\_\_

Date of Installation (MM/DD/YYYY): \_\_\_\_\_

**Thank you for choosing Omcan | Merci d'avoir choisi Omcan | Gracias por elegir Omcan**



Since 1951 Omcan has grown to become a leading distributor of equipment and supplies to the North American food service industry. Our success over these many years can be attributed to our commitment to strengthen and develop new and existing relationships with our valued customers and manufacturers. Today with partners in North America, Europe, Asia and South America, we continually work to improve and grow the company. We strive to offer customers exceptional value through our qualified local sales and service representatives who provide convenient access to over 5,000 globally sourced products.

---

Depuis 1951 Omcan a grandi pour devenir un des “leaders” de la distribution des équipements et matériel pour l’industrie des services alimentaires en Amérique du Nord. Notre succès au cours de ces nombreuses années peut être attribué à notre engagement à renforcer et à développer de nouvelles et existantes relations avec nos clients et les fabricants de valeur. Aujourd’hui avec des partenaires en Amérique du Nord, Europe, Asie et Amérique du Sud, nous travaillons continuellement à améliorer et développer l’entreprise. Nous nous efforçons d’offrir à nos clients une valeur exceptionnelle grâce à nos ventes locales qualifiées et des représentants de service qui offrent un accès facile à plus de 5000 produits provenant du monde entier.

---

Desde 1951 Omcan ha crecido hasta convertirse en un líder en la distribución de equipos y suministros de alimentos en América del Norte industria de servicios. Nuestro éxito en estos años se puede atribuir a nuestro compromiso de fortalecer y desarrollar nuevas relaciones existentes con nuestros valiosos clientes y fabricantes. Hoy con socios de América del Norte, Europa, Asia y América del Sur, que trabajan continuamente para mejorar y crecer la empresa. Nos esforzamos por ofrecer a nuestros clientes valor excepcional a través de nuestro local de ventas y representantes de los servicios que proporcionan un fácil acceso a más de 5,000 productos con origen a nivel mundial.

