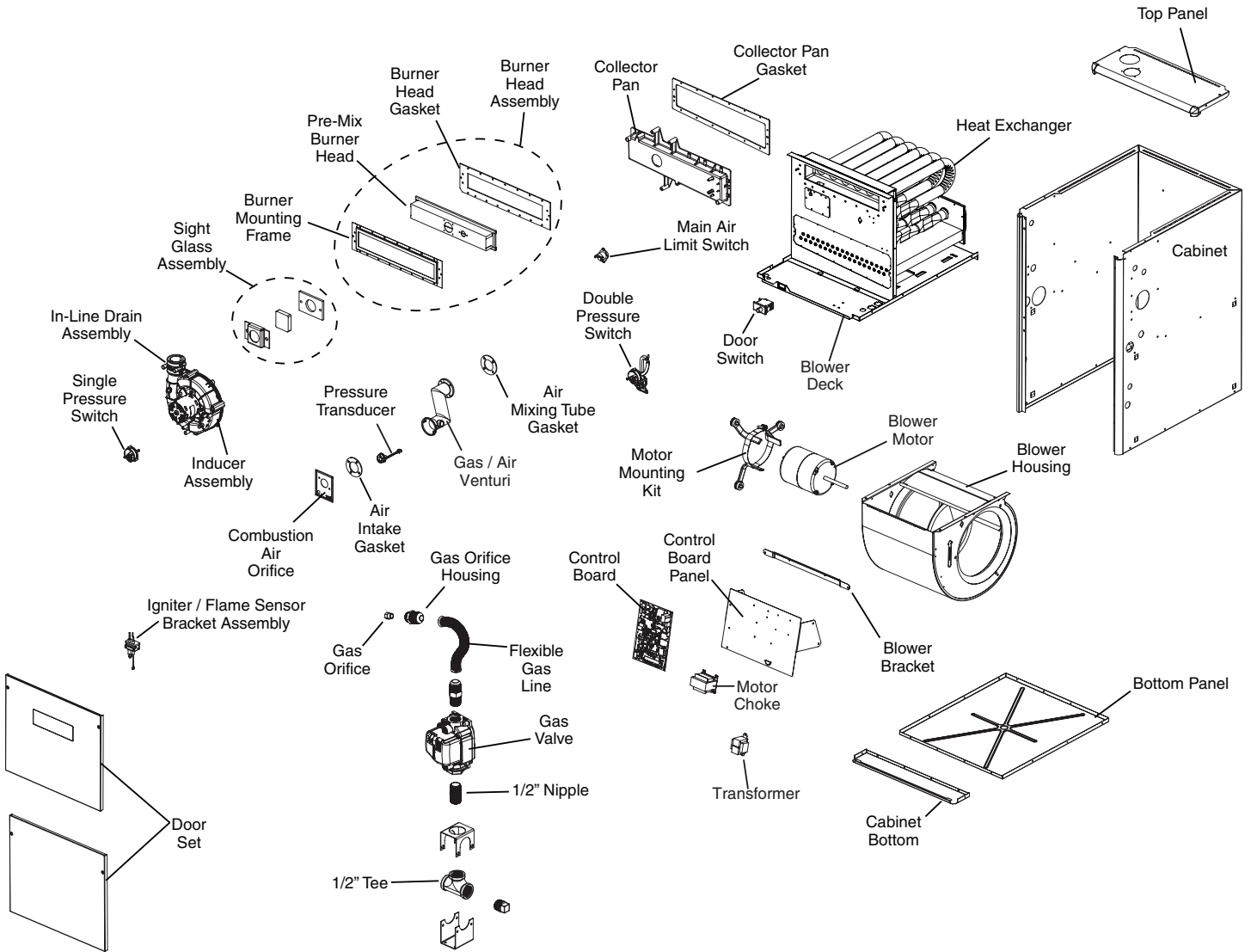


**REPLACEMENT PARTS LIST**

**\*G8SD ULTRA-LOW NOX SERIES,  
SINGLE STAGE, CONDENSING GAS FURNACE  
95% AFUE**



**95% AFUE****\*G8SD ULTRA-LOW NOX SERIES -  
REPLACEMENT PARTS LIST**

DESCRIPTION	*G8SD-050U-T23A*	*G8SD-070U-T24B*	*G8SD-100U-T35C*
	1032279F	1035870F	1032284F
Barbed Elbow Connector	664889R	664889R	664889R
Blower Assembly (Wheel & Housing)	1027024R	1027001R	1029938R
Blower Bracket	101878101R	101878102R	101878103R
Blower Limit Switch (Not Shown)	626611R	626611R	626611R
Blower Motor	103009846R	103009880R	103009861R
Collector Pan (With Gasket)	904801	904802	904803
Collector Pan Gasket	1018708R	1018709R	1018710R
Combustion Air Orifice	1035005	1039174	1035006
Control Board	1039508R	1039507R	1039509R
Control Board Panel	103213801R	103213902R	103213901R
Corner Wrapper Insert (Right - Not Shown)	618074R	618074R	618074R
Corner Wrapper Insert (Left - Not Shown)	618073R	618073R	618073R
Door Set	1035859	1039172F	1035860
Door Switch	632693R	632693R	632693R
Drain Tube (Hard "J") (Not Shown)	663706R	663706R	663706R
Drain Tube (Soft "J" 30") (Not Shown)	663707R	663707R	663707R
Drain Tube (Soft "J") (Not Shown)	664886R	664886R	664886R
Drain Tube (Soft 6.25") (Not Shown)	664878R	664878R	664878R
Drain Tube (Soft 9.0") (Not Shown)	1034969R	1034969R	1034969R
Flexible Gas Line (Stainless Steel)	1025318R	1025318R	1025318R
Fuse (5-Amp - Not Shown)	632269R	632269R	632269R
Gas / Air Venturi	1032274R	1032274R	1032274R
Gas / Air Venturi Gasket Only (Qty 2)	1028586	1028586	1028586
Gas Orifice	661030R	661026R	661016R
Gas Orifice Housing (Natural Gas)	1018790R	1018790R	1018790R
Gas Valve	624775R	624775R	624775R
Heat Exchanger Assembly	103009840R	1039231	103009804R
Ignitor / Flame Sensor Assembly	1021611R	1021611R	1021611R
Ignitor / Flame Sensor Gasket (Qty 20)	1028600	1028600	1028600
Inducer Gasket (Not Shown)	690283R	690283R	690283R
Inducer Limit Switch (Not Shown)	626599R	626599R	626599R
Inducer Motor (With Gasket)	1035783	1035783	1035783
Main Air Limit	626481R	626481R	626600R
Motor Choke	622340R	622340R	622340R
Motor Mount Kit	904951	904951	904907
Pre-Mix Burner Gasket	1018765R	1018767R	1018764R
Pre-Mix Burner Head Assembly	1035785	1039173	1035786
Pressure Switch - Double (0.50" / 0.95")	1016295R	—	1016295R
Pressure Switch - Double (0.50" / 0.70")	—	632555R	—
Pressure Switch - Single (2.40" wc)	1035869R	—	1035869R
Pressure Switch - Single (2.00" wc)	—	1044268R	—
PVC Tee (2" x 2" x 2")	663115R	663115R	663115R
PVC Trap	664969R	664969R	664969R
Set of Wires	103009818R	103009818R	103009819R
Spring Clamp (7/8")	606315R	606315R	606315R
Spring Clamp Hose	606286R	606286R	606286R
Top Panel	2B3551R	2B3552R	2B3553R
Transducer	1029942R	1029942R	1029942R
Transformer	622341R	622341R	622341R

Please specify the correct Model No., Serial No, and part number(s) when ordering parts from the nearest authorized dealer or service center.

